

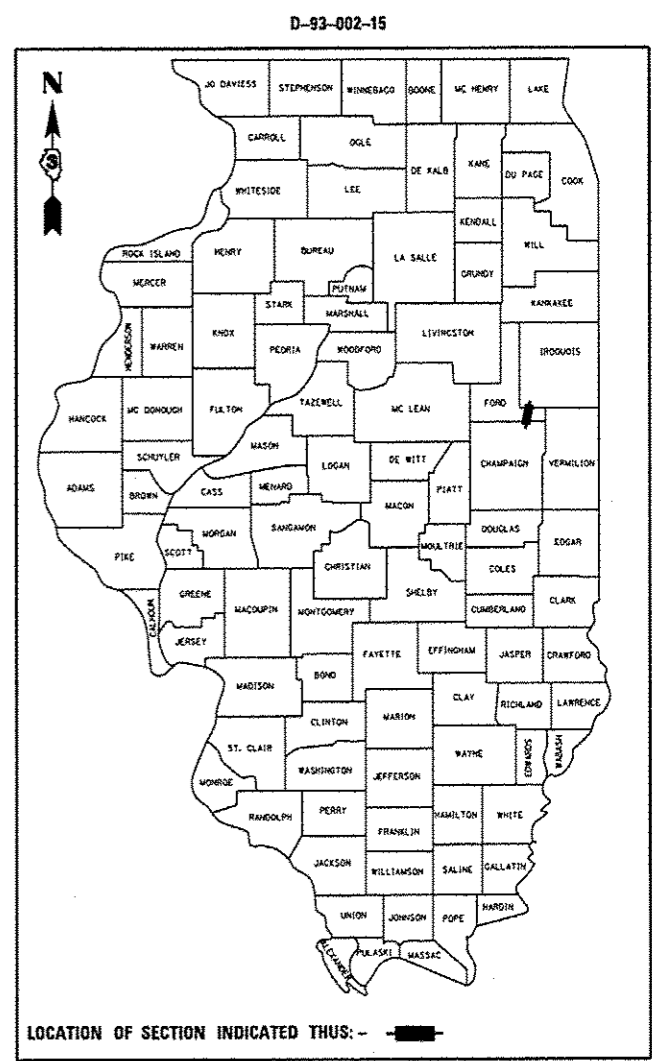
1. COVER SHEET
2. GENERAL NOTES
3. SUMMARY OF QUANTITIES
4. TYPICAL SECTION
- 5 - 7. SCHEDULES
8. TRAFFIC CONTROL AND PROTECTION, STANDARD 701400 (SPECIAL)
9. CLASS A PATCHING DETAILS
- 10 - 12. CLASS A PATCHING DETAILS

STANDARDS

- | | |
|-----------|---|
| 000001-06 | STANDARD SYMBOLS, ABBREVIATIONS AND PATTERNS |
| 001001-02 | AREAS OF REINFORCEMENT BARS |
| 001006 | DECIMAL OF AN INCH AND OF A FOOT |
| 701101-04 | OFF-ROAD OPERATIONS MULTILANE, 15' (4.5 m) TO 24" (600 mm) FROM PAVEMENT EDGE |
| 701106-02 | OFF-ROAD OPERATIONS, MULTILANE, MORE THAN 15' (4.5 m) AWAY |
| 701401-09 | LANE CLOSURE, FREEWAY/EXPRESSWAY |
| 701411-09 | LANE CLOSURE, MULTILANE, AT ENTRANCE OR EXIT RAMP FOR SPEEDS ≥ 45 MPH |
| 701426-07 | LANE CLOSURE, MULTILANE INTERMITTENT OR MOVING OPERATION, FOR SPEEDS ≥ 45 MPH |
| 701428 | TRAFFIC CONTROL SETUP AND REMOVAL FREEWAY/EXPRESSWAY |
| 701901-04 | TRAFFIC CONTROL DEVICES |
| 701400-08 | |

STATE OF ILLINOIS
DEPARTMENT OF TRANSPORTATION
DIVISION OF HIGHWAYS
PROPOSED
HIGHWAY PLANS
FAI ROUTE 57 (I-57)
SECTION D3 PATCHING 2016-3
CRC PAVEMENT PATCHING
FORD COUNTY
C-93-102-15

F.A.J. RTE.	SECTION	COUNTY	TOTAL SHEETS	SHEET NO.
57	D3 PATCHING 2016-3	IROQUOIS	12	1
		ILLINOIS	CONTRACT NO. 66E78	



RURAL	
INTERSTATE	
FAI 57 (I-57)	
2013	
ADT	15650
P.V.	65.19%
S.U.	5.24%
M.U.	29.57%

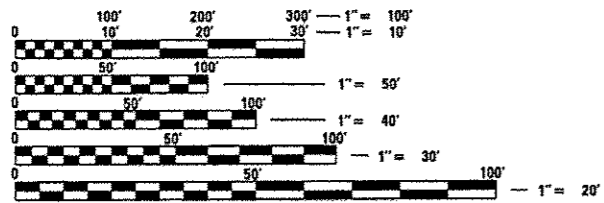
STATE OF ILLINOIS
DEPARTMENT OF TRANSPORTATION
DIVISION OF HIGHWAYS

SUBMITTED *April 2 2015*
Paul Coates, P.E.
DEPUTY DIRECTOR OF HIGHWAYS, REGION ENGINEER

May 8 2015
DR. J. B. Balamzou, P.E.
ENGINEER OF DESIGN AND ENVIRONMENT

May 8 2015
Onor Osman, P.E.
DIRECTOR OF HIGHWAYS, CHIEF ENGINEER

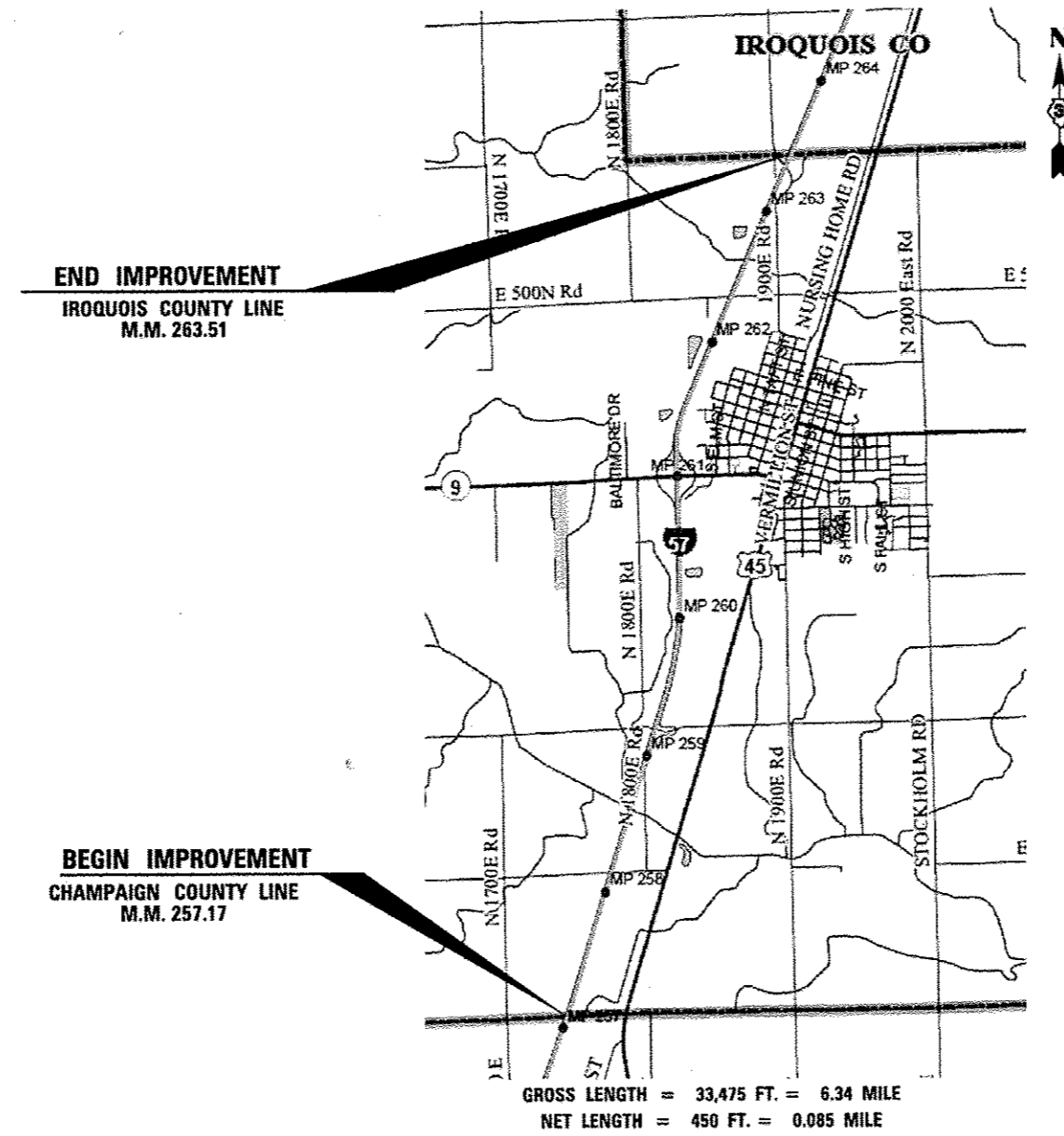
**PRINTED BY THE AUTHORITY
OF THE STATE OF ILLINOIS**



FULL SIZE PLANS HAVE BEEN PREPARED USING STANDARD ENGINEERING SCALES. REDUCED SIZED PLANS WILL NOT CONFORM TO STANDARD SCALES. IN MAKING MEASUREMENTS ON REDUCED PLANS, THE ABOVE SCALES MAY BE USED.

J.U.I.E.
JOINT UTILITY LOCATION INFORMATION FOR EXCAVATION
1-800-892-0123
OR 811

PROJECT ENGINEER: JOE KANNEL P.E.
UNIT CHIEF: RON WOODSHANK
TOWNSHIP: VARIOUS
CONTRACT NO. 66E78



GENERAL NOTES

PLAN DIMENSIONS AND DETAILS RELATIVE TO EXISTING PLANS ARE SUBJECT TO NOMINAL CONSTRUCTION VARIATIONS. THE CONTRACTOR SHALL FIELD VERIFY EXISTING DIMENSIONS AND DETAILS AFFECTING NEW CONSTRUCTION AND MAKE NECESSARY APPROVED ADJUSTMENTS PRIOR TO CONSTRUCTION OR ORDERING OF MATERIALS. SUCH VARIATIONS SHALL NOT BE CAUSE FOR ADDITIONAL COMPENSATION FOR A CHANGE IN SCOPE OF WORK; HOWEVER, THE CONTRACTOR WILL BE PAID FOR THE QUANTITY ACTUALLY FURNISHED AT THE UNIT PRICE BID FOR THE WORK.

ON EXISTING PAVEMENT WHICH MAY BE SUPERELEVATED, THE NEW CONCRETE PAVEMENT SHALL BE BUILT WITH THE SAME SUPERELEVATION UNLESS NEW SUPERELEVATION RATES ARE GIVEN ON THE PLANS.

ANY REFERENCE TO A STANDARD IN THESE PLANS SHALL BE INTERPRETED TO MEAN THE EDITION AS INDICATED BY THE SUBNUMBER SHOWN IN THE LIST OF STANDARDS OR THE COPY INCLUDED IN THESE PLANS.

THE CONTRACTOR SHALL CONTACT JULIE AT LEAST 48 HOURS PRIOR TO EXCAVATION TO DETERMINE WHICH UTILITIES ARE IN THE AREA.

ALL EXCAVATED MATERIAL, WHICH INCLUDES DIGGING OR GRADING OF ANY SOIL OR FILL MATERIAL, WITH THE EXCEPTION OF AGGREGATE FILLS, MUST BE INCORPORATED WITHIN THE IDOT RIGHT OF WAY DUE TO ENVIRONMENTAL DOCUMENTATION REQUIREMENTS.

COMMITMENTS

DATE: April 2, 2015

PREPARED BY: Don Benoit
DISTRICT STUDIES & PLANS ENGINEER

EXAMINED BY: [Signature]
DISTRICT CONSTRUCTION ENGINEER

[Signature]
DISTRICT MATERIALS ENGINEER

[Signature]
DISTRICT OPERATIONS ENGINEER

FILE NAME =	USER NAME = woodshenk1	DESIGNED - RW	REVISED -	STATE OF ILLINOIS DEPARTMENT OF TRANSPORTATION	GENERAL NOTES	F.A.J. RTE.	SECTION	COUNTY	TOTAL SHEETS	SHEET NO.	
c:\pwork\pwork\woodshenk1\0429677	036678-shr-details.dgn	DRAWN - RW	REVISED -			57	D3 PATCHING 2016-3	IROQUOIS	12	2	
	PLOT SCALE = 100.0000' / 1" =	CHECKED - TP	REVISED -			SCALE: _____ SHEET NO. 1 OF 1 SHEETS STA. _____ TO STA. _____					
	PLOT DATE = 4/12/2015	DATE - 3/12/2015	REVISED -			[ILLINOIS] CONTRACT NO. 66E78					

CONSTR. CODE
CONT. MAINT.
100% STATE
ROADWAY
0005
RURAL

CODE NO.	ITEM	UNIT	TOTAL QUANTITY	
44200577	CLASS A PATCHES, TYPE II, 12 INCH	SQ YD	600	600
44213000	PATCHING REINFORCEMENT	SQ YD	600	600
44213100	PAVEMENT FABRIC	SQ YD	600	600
44213200	SAW CUTS	FOOT	2700	2700
44213204	TIE BARS 3/4"	EACH	1800	1800
67100100	MOBILIZATION	L SUM	1	1
70100420	TRAFFIC CONTROL AND PROTECTION, STANDARD 701411	EACH	4	4
70103815	TRAFFIC CONTROL SURVEILLANCE	CAL DA	10	10
78009004	MODIFIED URETHANE PAVEMENT MARKING - LINE 4"	FOOT	450	450
78009006	MODIFIED URETHANE PAVEMENT MARKING - LINE 6"	FOOT	750	750
X0326880	MESSAGE BOARD VEHICLE DRIVER	HOOR	60	60
X0326907	PORTABLE, VEHICLE MOUNTED, CHANGEABLE MESSAGE SIGN	CAL MO	0.5	0.5
X7010410	SPEED DISPLAY TRAILER	CAL MO	0.5	0.5
X7010805	TRAFFIC CONTROL AND PROTECTION, STANDARD 701401 (SPECIAL)	L SUM	1	1
Z0030850	TEMPORARY INFORMATION SIGNING	SQ FT	84	84

•SPECIALITY ITEMS

FILE NAME =	USER NAME = woodshankr1	DESIGNED - RW	REVISED -
c:\pwork\pwork\woodshankr1\09429677	036678-sht-details.dgn	DRAWN - RW	REVISED -
	PLOT SCALE = 100,0000 ' / in.	CHECKED - TP	REVISED -
	PLOT DATE = 4/1/2015	DATE - 3/12/2015	REVISED -

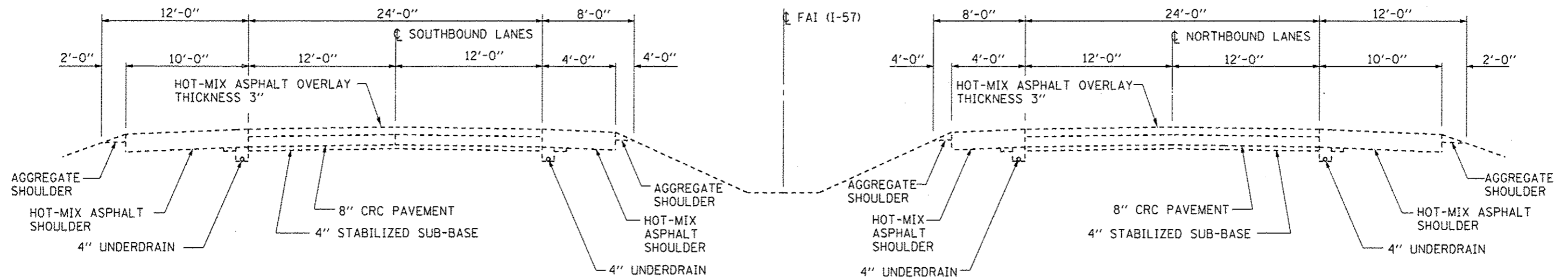
STATE OF ILLINOIS
DEPARTMENT OF TRANSPORTATION

SUMMARY OF QUANTITIES

SCALE: _____ SHEET NO. 1 OF 1 SHEETS STA. _____ TO STA. _____

F.A.I. RTE.	SECTION	COUNTY	TOTAL SHEETS	SHEET NO.
57	03 PATCHING 2016-3	IRROQUOIS	12	3
			CONTRACT NO. 66E78	
[ILLINOIS]				

Rev.



TYPICAL SECTIONS
M.P. 257.17 TO M.P. 263.51
FORD COUNTY

FILE NAME = c:\pwork\pvidot\woodshenr\168429677	USER NAME = woodshenr1	DESIGNED - RW	REVISED -	STATE OF ILLINOIS DEPARTMENT OF TRANSPORTATION	TYPICAL SECTION		F.A.I. RTE.	SECTION	COUNTY	TOTAL SHEETS	SHEET NO.
	0366E7B-ah1-details.dgn	DRAWN - RW	REVISED -				57	D3 PATCHING 2016-3	IROQUOIS	12	4
	PLOT SCALE = 100.0000' / in.	CHECKED - TP	REVISED -				CONTRACT NO. 66E7B				
	PLOT DATE = 4/1/2015	DATE - 3/12/2015	REVISED -				[ILLINOIS]				
				SCALE: _____	SHEET NO. 1 OF 1 SHEETS	STA. _____ TO STA. _____					

PATCHING SCHEDULE

LOCATION BY M.M.	PASSING LANE	DRIVING LANE	PASSING LANE					DRIVING LANE				
			CLASS A TYPE II	PATCH REINF.	PAV'T FABRIC	SAW CUTS	TIE BARS 3/4"	CLASS A TYPE II	PATCH REINF.	PAV'T FABRIC	SAW CUTS	TIE BARS 3/4"
			SQ YD	SQ YD	SQ YD	FOOT	EACH	SQ YD	SQ YD	SQ YD	FOOT	EACH
NORTHBOUND LANES												
257.20		6						8	8	8	36	24
257.30		6						8	8	8	36	24
257.40	6		8	8	8	36	24					
257.50		6						8	8	8	36	24
257.60		6						8	8	8	36	24
257.70	6		8	8	8	36	24					
257.80		6						8	8	8	36	24
257.90		6						8	8	8	36	24
258.00	6		8	8	8	36	24					
258.10		6						8	8	8	36	24
258.20		6						8	8	8	36	24
258.30	6		8	8	8	36	24					
258.40		6						8	8	8	36	24
258.50		6						8	8	8	36	24
258.60	6		8	8	8	36	24					
258.70		6						8	8	8	36	24
258.80		6						8	8	8	36	24
258.90	6		8	8	8	36	24					
259.00		6						8	8	8	36	24
259.10		6						8	8	8	36	24
259.20	6		8	8	8	36	24					
259.30		6						8	8	8	36	24
259.40		6						8	8	8	36	24
259.60	6		8	8	8	36	24					
259.80		6						8	8	8	36	24
260.00		6						8	8	8	36	24
260.20	6		8	8	8	36	24					
260.40		6						8	8	8	36	24
260.60		6						8	8	8	36	24
260.80	6		8	8	8	36	24					
261.00		6						8	8	8	36	24
261.30		6						8	8	8	36	24
261.60	6		8	8	8	36	24					
261.90		6						8	8	8	36	24
262.20		6						8	8	8	36	24
262.50	6		8	8	8	36	24					
262.80		6						8	8	8	36	24
263.10		6						8	8	8	36	24
263.40	6		8	8	8	36	24					
NB SUBTOTALS			104	104	104	468	312	208	208	208	936	624

NORTHBOUND LANE TOTALS

CLASS A TYPE II	PATCH REINF.	PAV'T FABRIC	SAW CUTS	TIE BARS 3/4"
SQ YD	SQ YD	SQ YD	FOOT	EACH
312	312	312	1404	936

PATCHING SCHEDULE

LOCATION BY M.M.	PASSING LANE	DRIVING LANE	PASSING LANE					DRIVING LANE				
			CLASS A TYPE II	PATCH REINF.	PAV'T FABRIC	SAW CUTS	TIE BARS 3/4"	CLASS A TYPE II	PATCH REINF.	PAV'T FABRIC	SAW CUTS	TIE BARS 3/4"
			SQ YD	SQ YD	SQ YD	FOOT	EACH	SQ YD	SQ YD	SQ YD	FOOT	EACH
SOUTHBOUND LANES												
263.40		6						8	8	8	36	24
263.30		6						8	8	8	36	24
263.20	6		8	8	8	36	24					
263.10		6						8	8	8	36	24
263.00		6						8	8	8	36	24
262.90	6		8	8	8	36	24					
262.80		6						8	8	8	36	24
262.70		6						8	8	8	36	24
262.60	6		8	8	8	36	24					
262.50		6						8	8	8	36	24
262.40		6						8	8	8	36	24
262.30	6		8	8	8	36	24					
262.20		6						8	8	8	36	24
262.10		6						8	8	8	36	24
262.00	6		8	8	8	36	24					
261.90		6						8	8	8	36	24
261.80		6						8	8	8	36	24
261.70	6		8	8	8	36	24					
261.60		6						8	8	8	36	24
261.50		6						8	8	8	36	24
261.40	6		8	8	8	36	24					
261.30		6						8	8	8	36	24
261.20		6						8	8	8	36	24
261.10	6		8	8	8	36	24					
261.00		6						8	8	8	36	24
260.90		6						8	8	8	36	24
260.80	6		8	8	8	36	24					
260.40		6						8	8	8	36	24
260.00		6						8	8	8	36	24
259.60	6		8	8	8	36	24					
259.20		6						8	8	8	36	24
258.80		6						8	8	8	36	24
258.40	6		8	8	8	36	24					
258.00		6						8	8	8	36	24
257.60		6						8	8	8	36	24
257.20	6		8	8	8	36	24					
SB TOTALS			96	96	96	432	288	192	192	192	864	576

SOUTHBOUND LANE TOTALS

CLASS A TYPE II	PATCH REINF.	PAV'T FABRIC	SAW CUTS	TIE BARS 3/4"
SQ YD	SQ YD	SQ YD	FOOT	EACH
288	288	288	1296	864

PAVEMENT MARKING SCHEDULE

LOCATION MILE POST	MODIFIED URETHANE PAVEMENT MARKING LINE 4"		MODIFIED URETHANE PAVEMENT MARKING LINE 6"
	FEET		FEET
	YELLOW	WHITE	WHITE
NORTHBOUND LANES			
257.20		6	10
257.30		6	10
257.40	6		10
257.50		6	10
257.60		6	10
257.70	6		10
257.80		6	10
257.90		6	10
258.00	6		10
258.10		6	10
258.20		6	10
258.30	6		10
258.40		6	10
258.50		6	10
258.60	6		10
258.70		6	10
258.80		6	10
258.90	6		10
259.00		6	10
259.10		6	10
259.20	6		10
259.30		6	10
259.40		6	10
259.60	6		10
259.80		6	10
260.00		6	10
260.20	6		10
260.40		6	10
260.60		6	10
260.80	6		10
261.00		6	10
261.30		6	10
261.60	6		10
261.90		6	10
262.20		6	10
262.50	6		10
262.80		6	10
263.10		6	10
263.40	6		10
SUBTOTAL	78	156	390

NORTHBOUND TOTALS

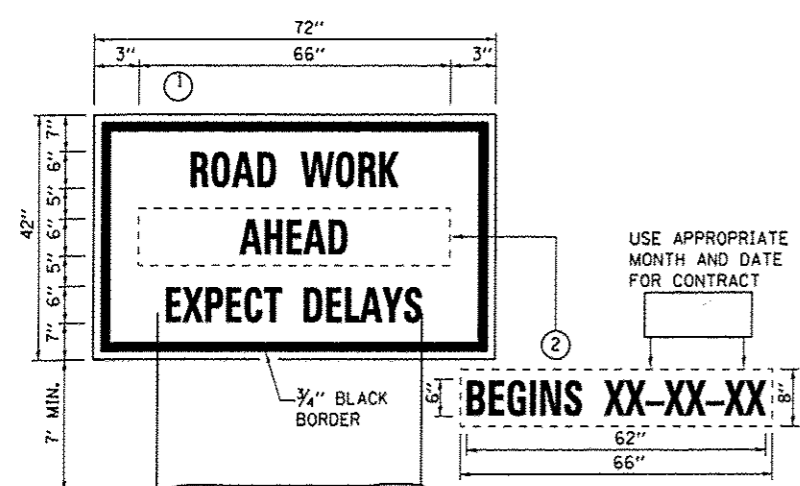
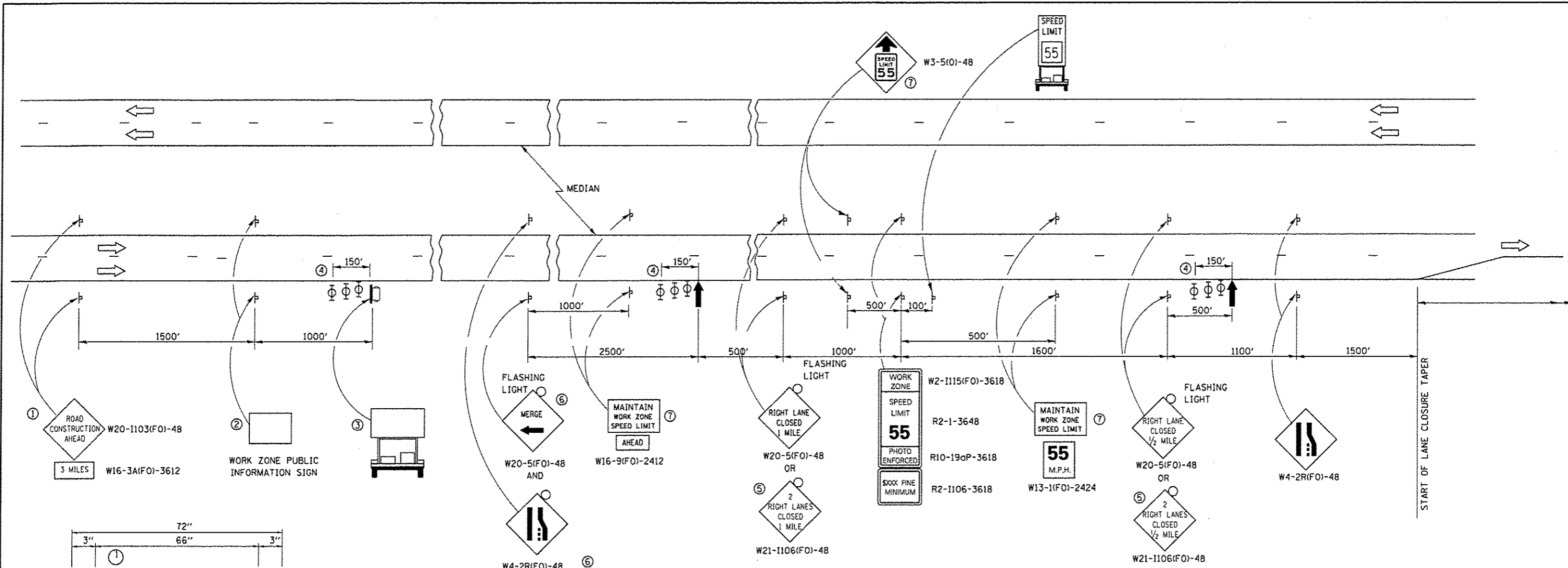
MODIFIED URETHANE PAVEMENT MARKING LINE 4"	MODIFIED URETHANE PAVEMENT MARKING LINE 6"
FEET	FEET
234	390

PAVEMENT MARKING SCHEDULE

LOCATION MILE POST	MODIFIED URETHANE PAVEMENT MARKING LINE 4"		MODIFIED URETHANE PAVEMENT MARKING LINE 6"
	FEET		FEET
	YELLOW	WHITE	WHITE
SOUTHBOUND LANES			
263.40		6	10
263.30		6	10
263.20	6		10
263.10		6	10
263.00		6	10
262.90	6		10
262.80		6	10
262.70		6	10
262.60	6		10
262.50		6	10
262.40		6	10
262.30	6		10
262.20		6	10
262.10		6	10
262.00	6		10
261.90		6	10
261.80		6	10
261.70	6		10
261.60		6	10
261.50		6	10
261.40	6		10
261.30		6	10
261.20		6	10
261.10	6		10
261.00		6	10
260.90		6	10
260.80	6		10
260.40		6	10
260.00		6	10
259.60	6		10
259.20		6	10
258.80		6	10
258.40	6		10
258.00		6	10
257.60		6	10
257.20	6		10
SUBTOTAL	72	144	360

SOUTHBOUND TOTALS

MODIFIED URETHANE PAVEMENT MARKING LINE 4"	MODIFIED URETHANE PAVEMENT MARKING LINE 6"
FEET	FEET
216	360

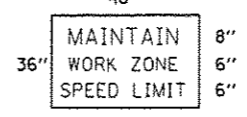


TEMPORARY INFORMATION SIGNING

- NOTES:**
- USE 6" D BLACK LETTERING ON FLOURESENT ORANGE BACKGROUND.
 - ERECT SIGNS AT LOCATIONS IN ADVANCE OF THE "ROAD CONSTRUCTION AHEAD" SIGNS ON EACH SIDE OF THE ROADWAY AS DIRECTED BY THE ENGINEER.
 - ERECT SIGN ① WITH INSTALLED PANEL ② A MINIMUM OF ONE WEEK PRIOR TO THE START OF THE LANE CLOSURE.
 - REMOVE PANEL ② ON THAT DATE.
 - SEE SPECIAL PROVISION "TEMPORARY INFORMATION SIGNING" FOR ADDITIONAL INFORMATION.
 - WILL BE PAID FOR PER SQ FT AS "TEMPORARY INFORMATION SIGNING". EACH SIGN = 21 SQ FT AND THE DATE PANEL ② WILL NOT BE MEASURED SEPARATELY FOR PAYMENT.

- THE ROAD CONSTRUCTION AHEAD SIGN SHALL BE LOCATED 3 MILES IN ADVANCE OF THE PROJECT LIMITS.
- THE MESSAGE AND SIZE OF THE WORK ZONE PUBLIC INFORMATION SIGN SHALL BE AS SPECIFIED BY THE DEPARTMENT.
- TO BE PLACED IN THE MEDIAN WHEN FEASIBLE. THE MESSAGE BOARD SHALL BE USED TO DISPLAY STATUS OF LANES WITHIN THE PROJECT. THE PRIMARY MESSAGES SHALL BE:
"RIGHT LANE CLOSED" / " x MILES AHEAD"
"LEFT LANE CLOSED" / " x MILES AHEAD"
"ALL LANES OPEN"
- THREE, TYPE II BARRICADES, DRUMS, OR VERTICAL BARRICADES AT 50' CENTERS.
- THIS SIGN SHALL BE USED WHEN 2 LANES ARE CLOSED.
- WHEN THE LEFT LANE IS CLOSED, SWITCH THESE TWO SIGNS AND THE DIRECTION OF THE MERGE ARROW.
- THIS SIGN SHALL ONLY BE USED IF THE EXISTING SPEED LIMIT IS GREATER THAN 65 MPH.

⑦ 48"x36" FLUORESCENT ORANGE SIGN WITH BLACK LETTERS.



- ARROW BOARD
- PORTABLE CHANGEABLE MESSAGE SIGN
- SIGN
- TYPE II BARRICADE, DRUM, OR VERTICAL BARRICADE WITH MONODIRECTIONAL FLASHING LIGHT
- SPEED DISPLAY TRAILER

GENERAL NOTE:

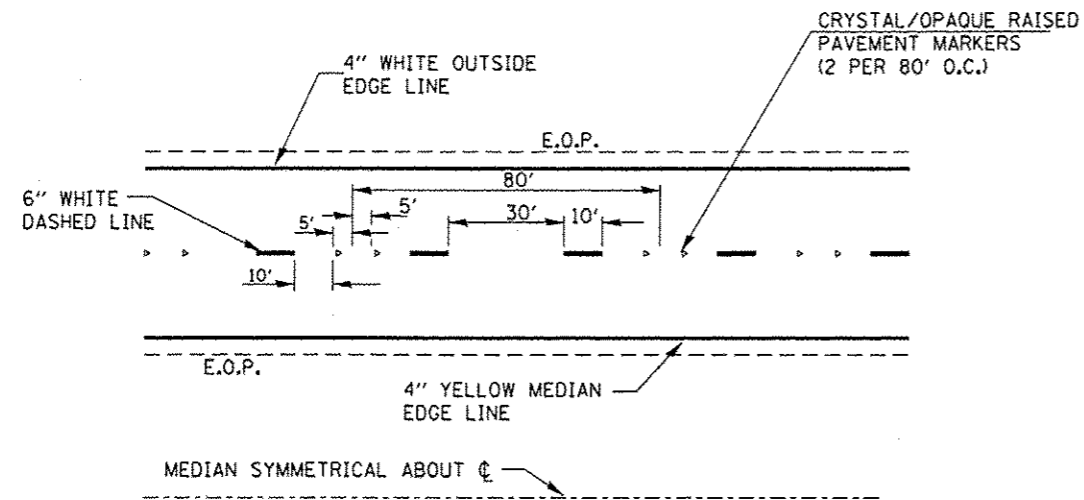
THIS STANDARD IS USED WHERE AT ANY TIME A LANE IS CLOSED ON A FREEWAY/EXPRESSWAY.

WHEN THE LEFT LANE IS CLOSED, LEFT LANE CLOSED SIGNS SHALL BE SUBSTITUTED FOR THE RIGHT LANE CLOSED SIGNS.

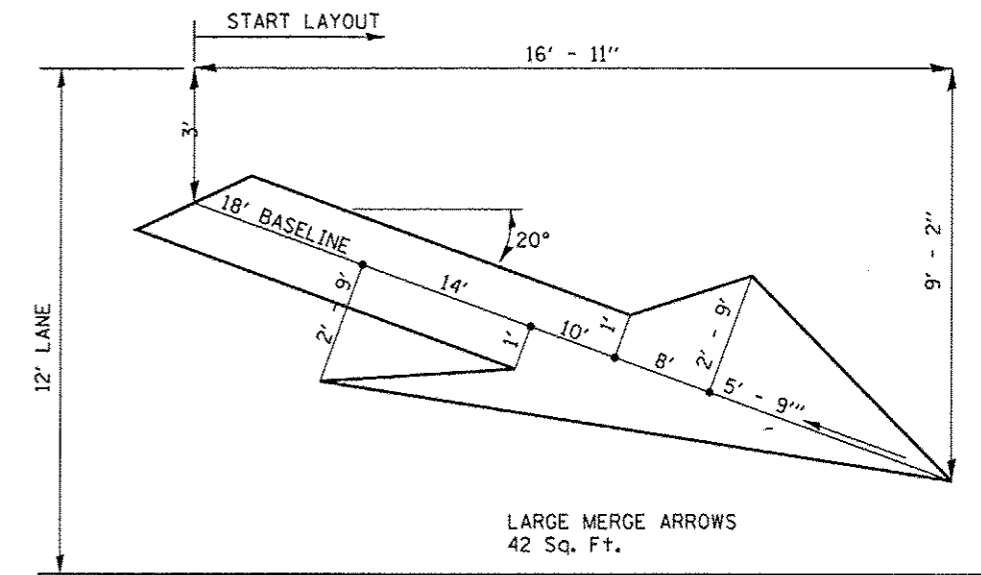
THE FIRST TWO SIGNS AND THE MESSAGE BOARD ARE STATIONARY. THE OTHER SIGNS AND ARROWBOARDS SHALL BE MOVED AS NECESSARY TO MAINTAIN THE REQUIRED DISTANCE FROM THE START OF THE LANE CLOSURE TAPER(S).

SEE SPECIAL PROVISIONS.

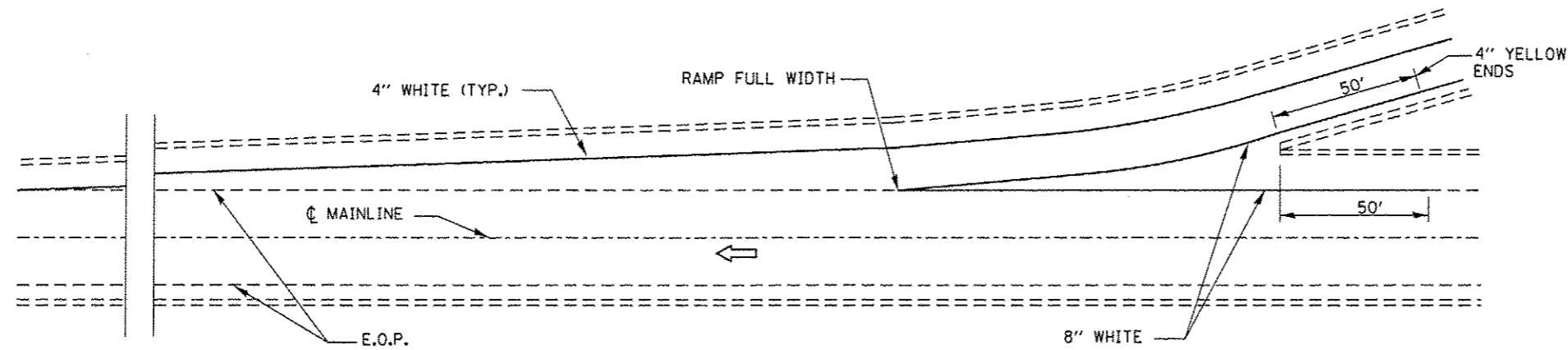
FILE NAME =	USER NAME = woodshankr1	DESIGNED - RW	REVISED -	STATE OF ILLINOIS DEPARTMENT OF TRANSPORTATION	TRAFFIC CONTROL AND PROTECTION STANDARD 701400 (SPECIAL)	F.A.I. RTE.	SECTION	COUNTY	TOTAL SHEETS	SHEET NO.	
or\pr_work\pvd\dot\woodshankr1\d2429677	0366E78-shd-detailed.dgn	DRAWN - RW	REVISED -			57	D3 PATCHING 2016-3	IRGOUOIS	12	8	
	PLOT SCALE = 1/8"=1'-0"	CHECKED - TP	REVISED -			CONTRACT NO. 66E78					
	PLOT DATE = 4/1/2015	DATE - 3/12/2015	REVISED -			ILLINOIS					



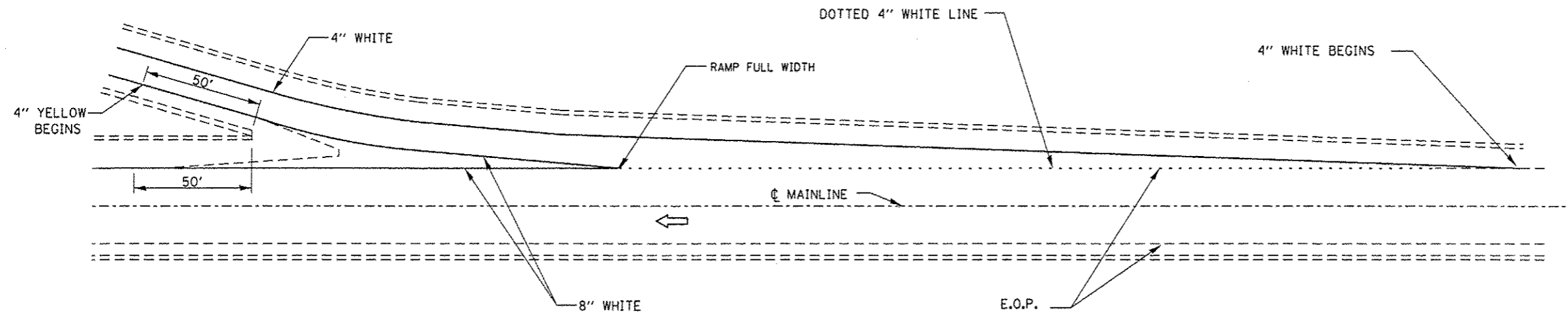
TYPICAL PAVEMENT MARKINGS



LANE DROP ARROW

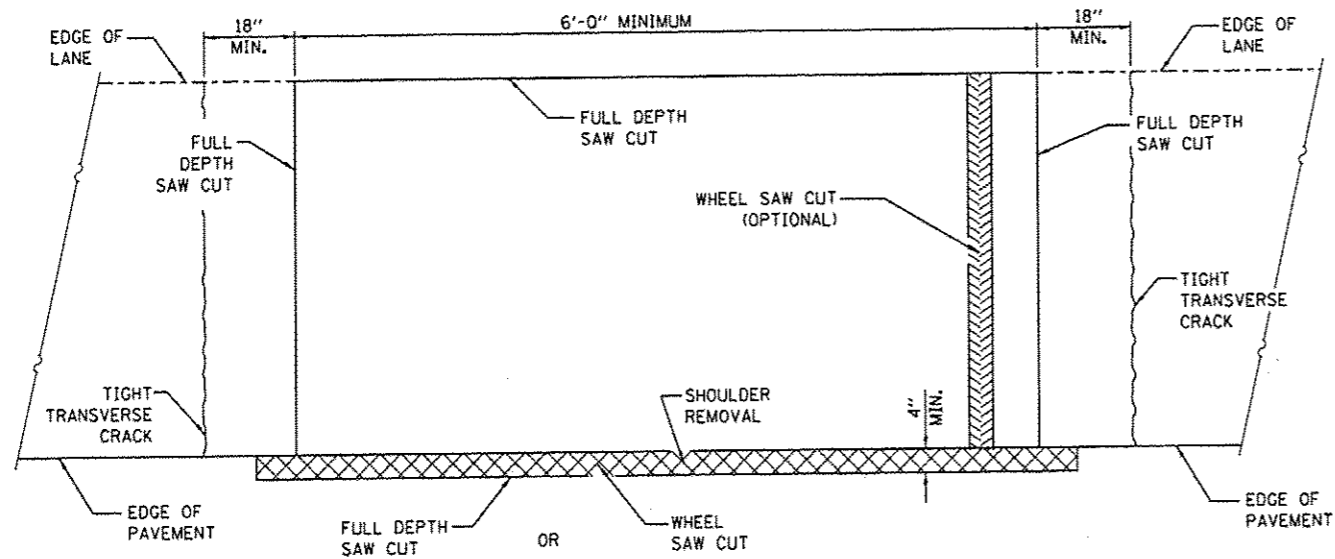


TYPICAL PAVEMENT MARKING FOR ENTRANCE RAMP TERMINALS

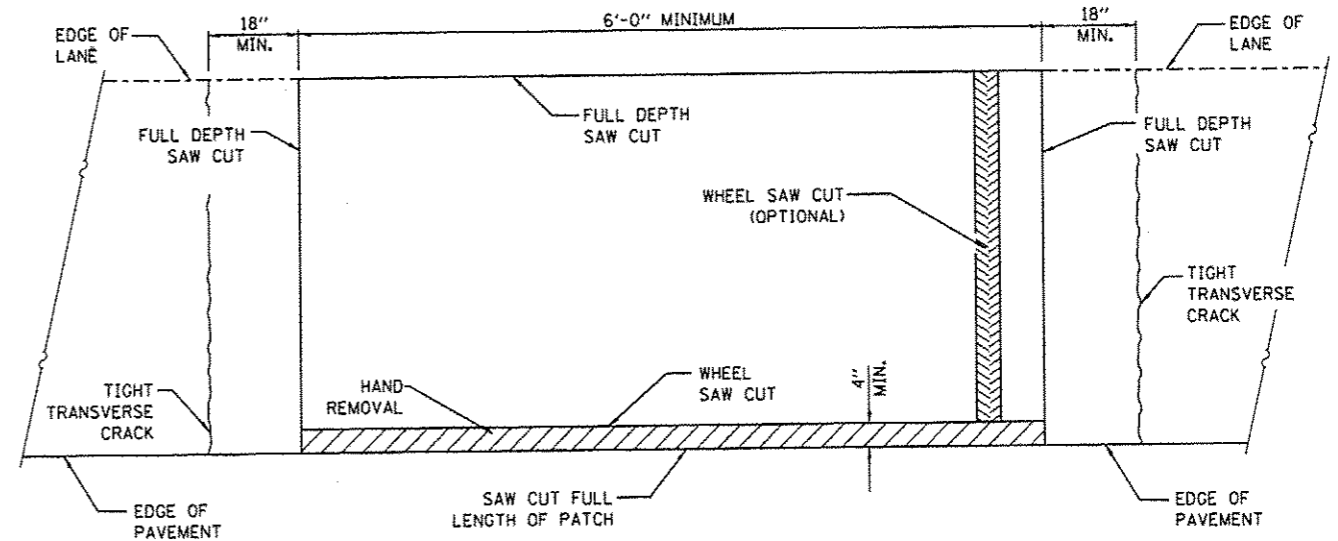


TYPICAL PAVEMENT MARKINGS FOR EXIT RAMP TERMINALS

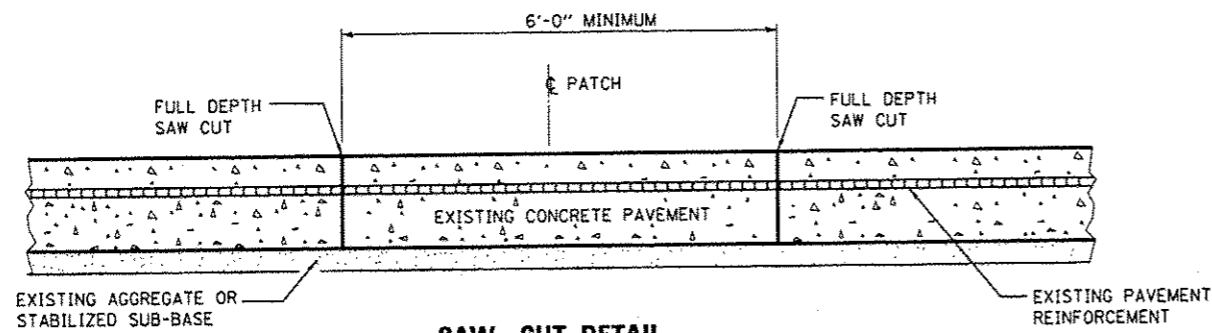
FILE NAME =	USER NAME = woodshank1	DESIGNED - RW	REVISED -	STATE OF ILLINOIS DEPARTMENT OF TRANSPORTATION	PAVEMENT MARKING	F.A.J. RTE.	SECTION	COUNTY	TOTAL SHEETS	SHEET NO.	
g:\pwork\pwork\woodshank1\2012\29677\036678-shs-details.dgn	PLOT SCALE = 1/8" = 1'-0"	DRAWN - RW	REVISED -			57	D3 PATCHING 2016-3	IROQUOIS	12	9	
	PLOT DATE = 4/1/2015	CHECKED - TP	REVISED -			CONTRACT NO. 66E78					
		DATE - 3/12/2015	REVISED -			ILLINOIS					
SCALE: _____ SHEET NO. 1 OF 1 SHEETS STA. _____ TO STA. _____											



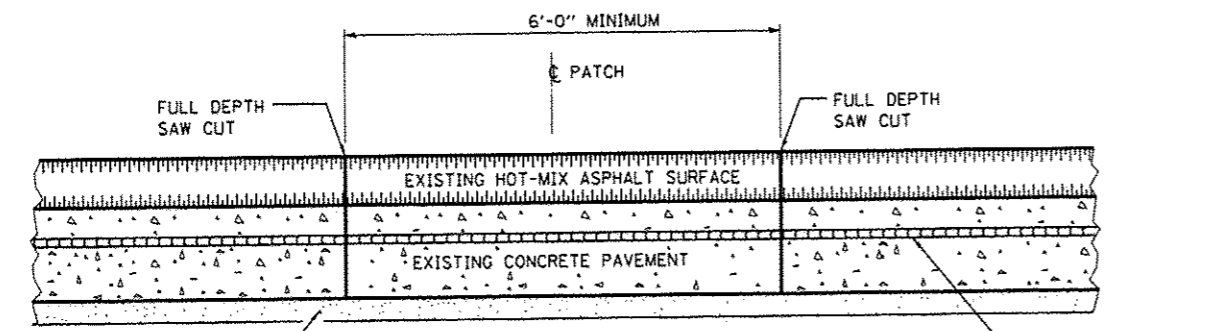
PAVEMENT SAWING DETAIL
(HMA SHOULDER)



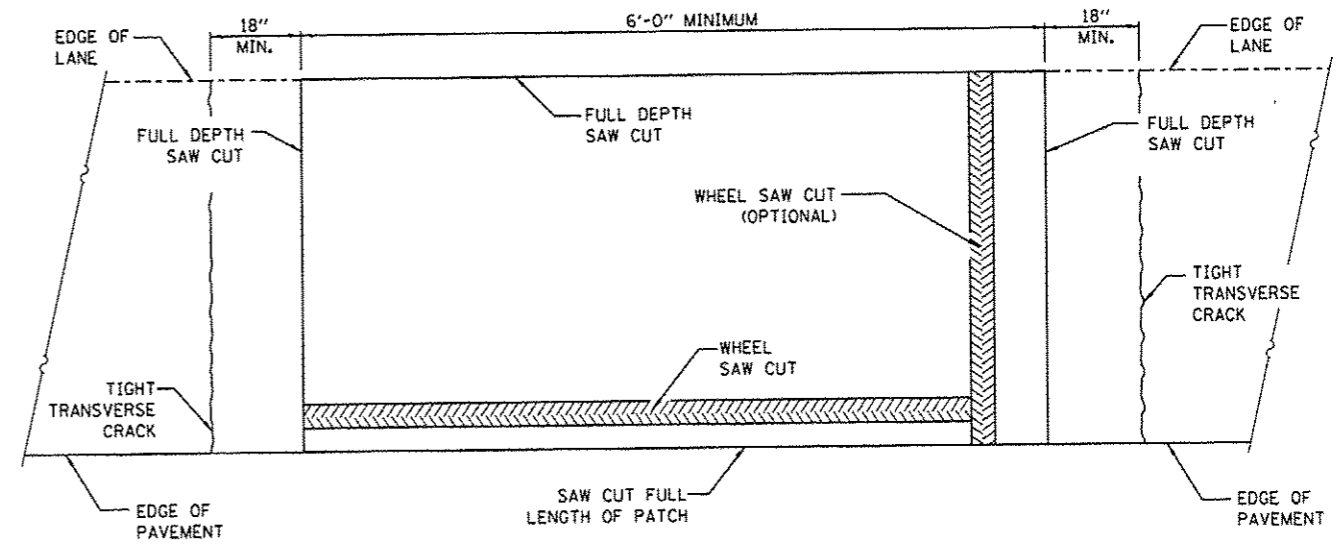
PAVEMENT SAWING DETAIL
(PCC SHOULDER)



SAW CUT DETAIL
WITHOUT HMA SURFACE



SAW CUT DETAIL
WITH HMA SURFACE

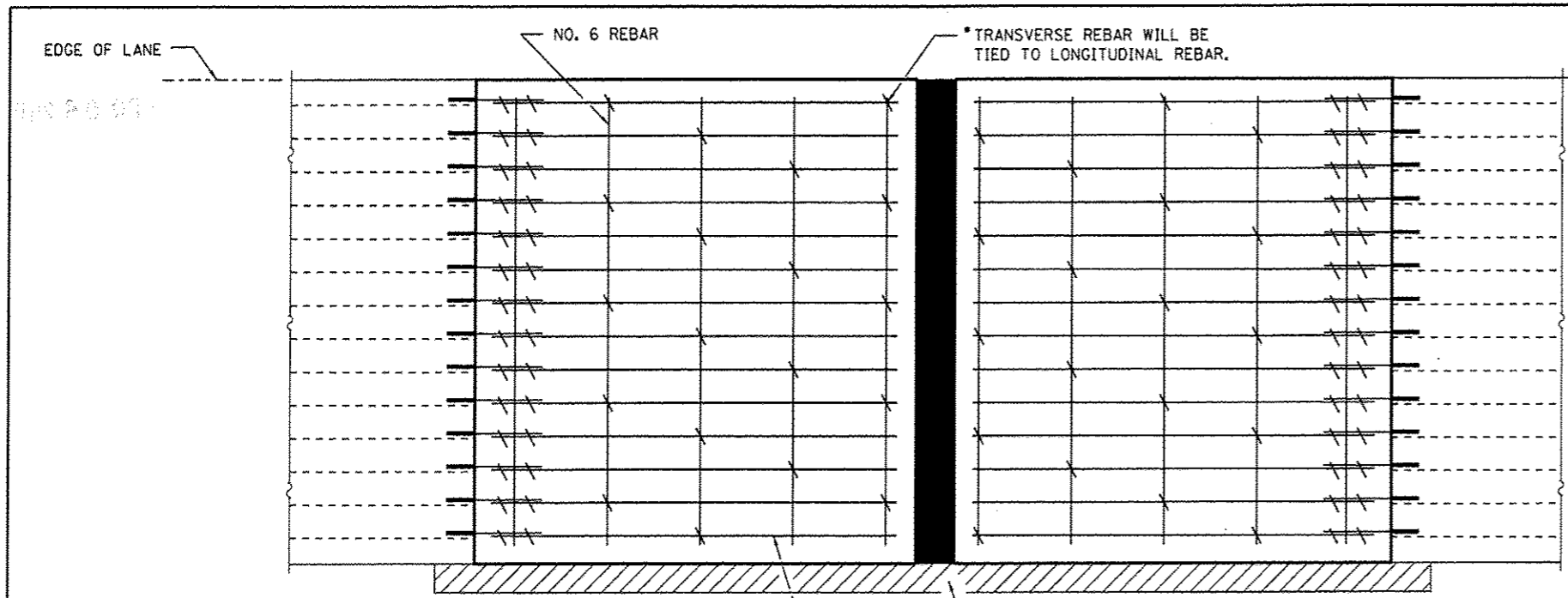


ALTERNATE SAWING DETAIL
(PCC SHOULDER)

GENERAL NOTES

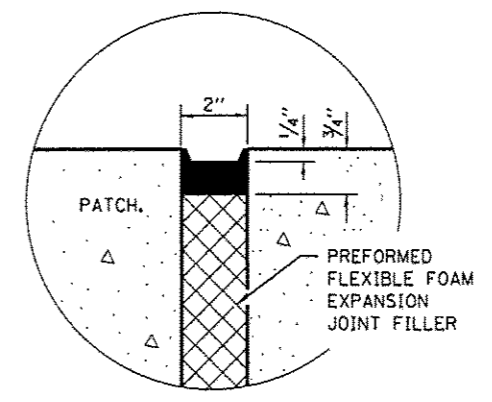
WHEN PATCHING TWO ADJACENT LANES IN ONE OPERATION THE LONGITUDINAL JOINT SHALL BE LONGITUDINAL SAWED JOINT AS DETAILED ON STANDARD 420001. HOWEVER, THE GROOVE MAYBE EITHER PREFORMED OR SAWED.
SEE STANDARD 421001 FOR DETAILS OF PAVEMENT REINFORCEMENT.

FILE NAME =	USER NAME = woodshankr1	DESIGNED - RW	REVISED -	STATE OF ILLINOIS DEPARTMENT OF TRANSPORTATION	CLASS A PATCHES	F.A.I. RITE	SECTION	COUNTY	TOTAL SHEETS	SHEET NO.	
o:\pwork\pedit\woodshankr1\d0429677\0366E78-shr-details.dgn	PLOT SCALE = 1/8" = 1' / in.	DRAWN - RW	REVISED -			57	D3 PATCHING 2016-3	IRROUOIS	12	10	
#MODELNAME#	PLOT DATE = 4/1/2015	CHECKED - EP	REVISED -			SCALE: _____ SHEET 1 OF 3 SHEETS STA. _____ TO STA. _____					
		DATE - 3/12/2015	REVISED -			ILLINOIS CONTRACT NO. 66E78					

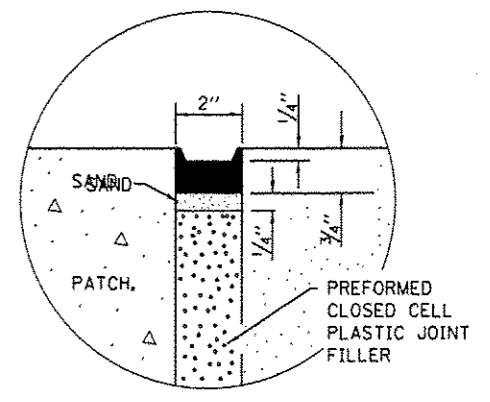


TRANSVERSE REBAR WILL EXTEND TO OUTER LONGITUDINAL REBAR WHILE PROVIDING A MINIMUM 3" CLEARANCE FROM EXISTING PAVEMENT EDGE. SHOULDER REMOVAL

PAVEMENT REINFORCEMENT DETAIL



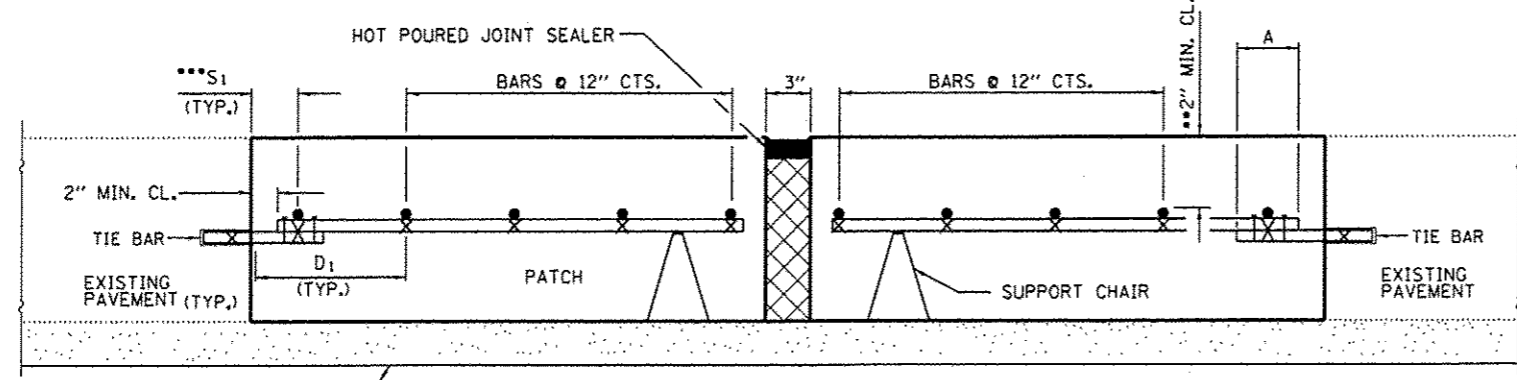
SEALING DETAIL



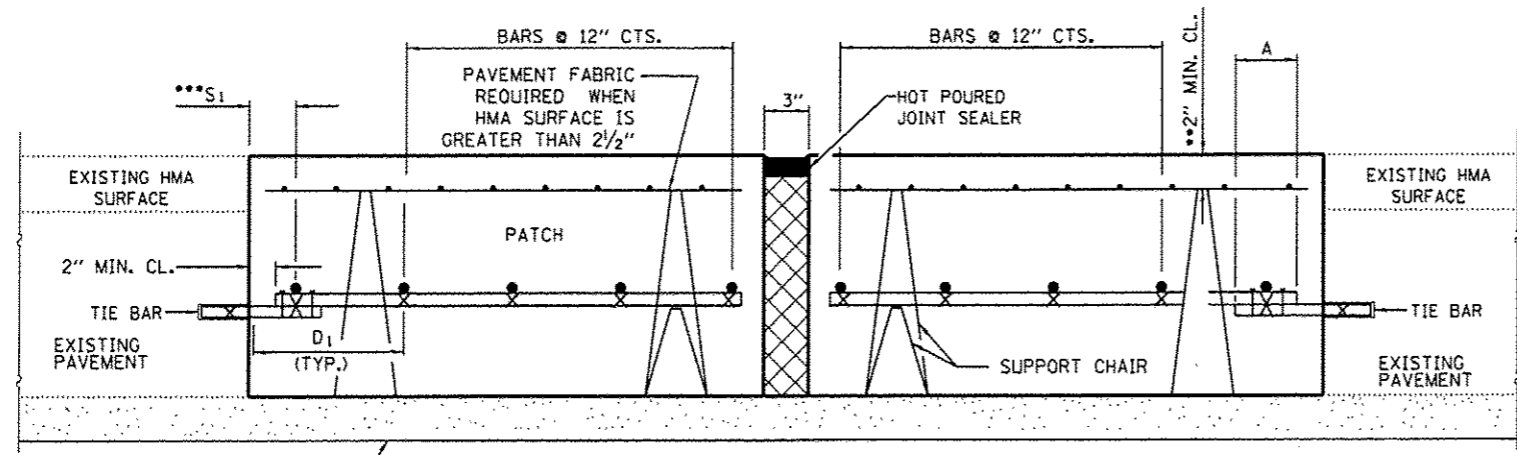
SEALING DETAIL

- EVERY 3rd INTERSECTION MUST BE TIED.
- WHEN THE MINIMUM CLEARANCE CANNOT BE OBTAINED WITH THE TRANSVERSE REBAR ON TOP, THEN THE TRANSVERSE REBAR SHALL BE TIED TO THE BOTTOM OF THE LONGITUDINAL REBAR.
- VARIABLES: WHERE S₁ IS 2 1/2" MIN. AND 12" MAX. D₁ = 2(S₁)

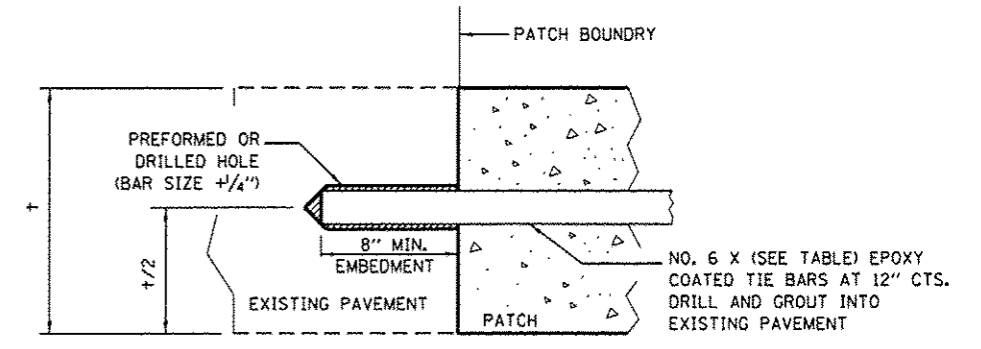
MINIMUM BAR LAP	A (MIN.)
#5	18"
#6	21"
#7	24"
FABRIC	18"



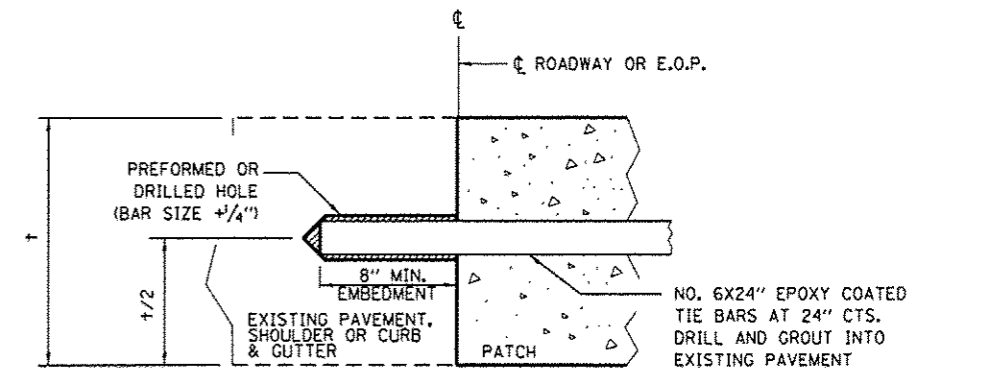
PATCHING DETAIL - EXPANSION WITHOUT HMA SURFACE



PATCHING DETAIL - EXPANSION WITH HMA SURFACE



*** TRANSVERSE CONSTRUCTION JOINT (TIE BAR GROUTED IN PLACE)**



LONGITUDINAL CONSTRUCTION JOINT WHEN PATCH IS OVER 20' IN LENGTH (TIE BAR GROUTED IN PLACE)

FILE NAME =	USER NAME = woodshenk1	DESIGNED - RW	REVISED -
0:\pwork\pvidot\woodshenk1\d0429677	0366E78-shd-details.dgn	DRAWN - RW	REVISED -
		CHECKED - EP	REVISED -
		DATE - 3/12/2015	REVISED -

**STATE OF ILLINOIS
DEPARTMENT OF TRANSPORTATION**

CLASS A PATCHES WITH EXPANSION

SCALE: _____ SHEET 3 OF 3 SHEETS STA. _____ TO STA. _____

F.A.I. RTE.	SECTION	COUNTY	TOTAL SHEETS	SHEET NO.
57	D3 PATCHING 2016-3	IROQUOIS	12	12
			CONTRACT NO. 66E78	
ILLINOIS				