

06-12-2015 LETTING ITEM 099

STATE OF ILLINOIS  
DEPARTMENT OF TRANSPORTATION  
DIVISION OF HIGHWAYS

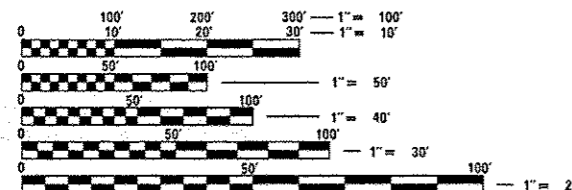
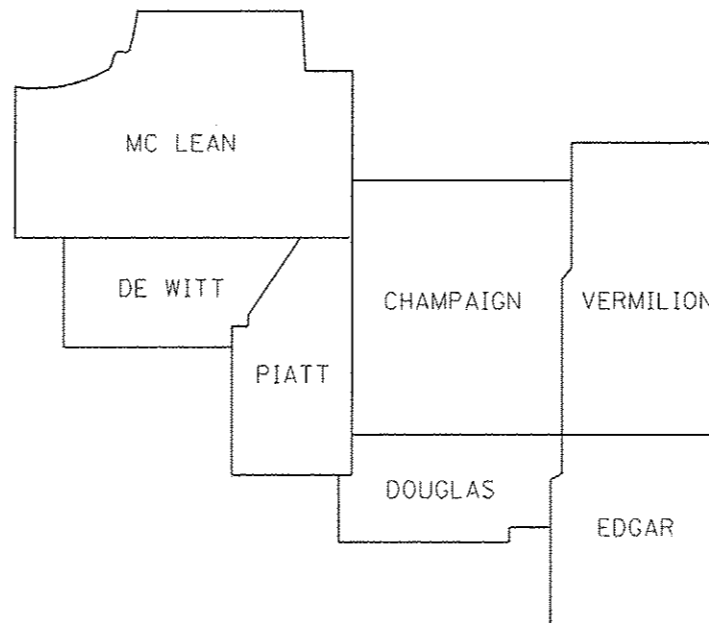
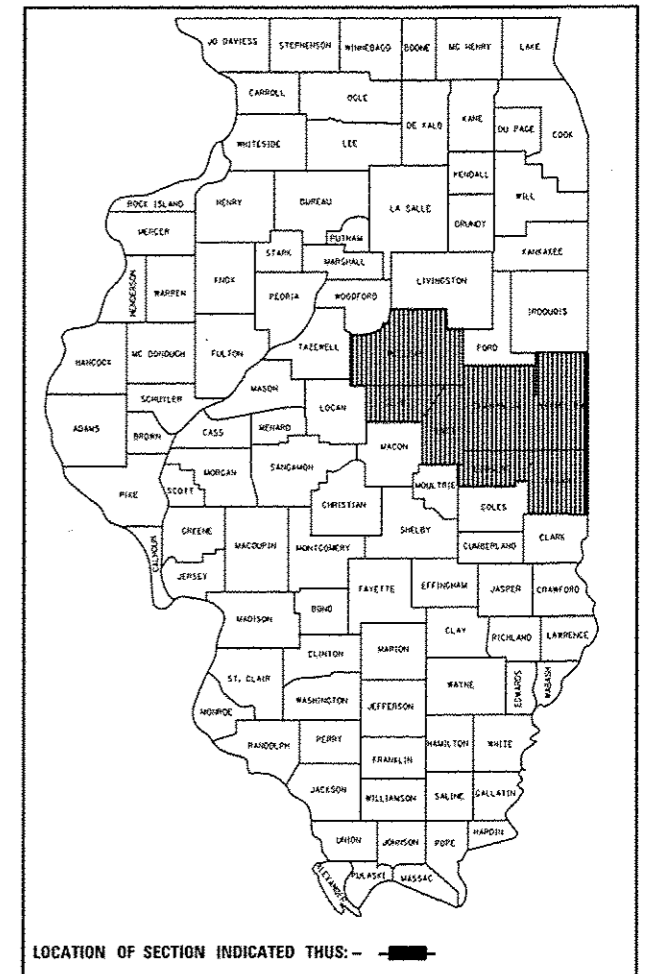
**PROPOSED  
HIGHWAY PLANS**

VARIOUS ROUTES  
SECTION D5 GRDRL & FENCE REPAIR 2016-1  
GUARDRAIL & FENCE REPAIR  
VARIOUS COUNTIES

C-95-037-15

F.A. RTE.	SECTION	COUNTY	TOTAL SHEETS	SHEET NO.
VAR.	*	VARIOUS	10	1
		ILLINOIS	CONTRACT NO. 70B37	

D-95-037-15



FULL SIZE PLANS HAVE BEEN PREPARED USING STANDARD ENGINEERING SCALES. REDUCED SIZED PLANS WILL NOT CONFORM TO STANDARD SCALES. IN MAKING MEASUREMENTS ON REDUCED PLANS, THE ABOVE SCALES MAY BE USED.

J.U.L.I.E.  
JOINT UTILITY LOCATION INFORMATION FOR EXCAVATION  
1-800-892-0123  
OR 811

PROJECT ENGINEER: NANCY FASIG  
SQUAD LEADER: STEVE COOMBES  
DESIGNER: KYLE STEELE  
PHONE NUMBER: (217) 465-4181  
CONTRACT NO. 70B37

STATE OF ILLINOIS  
DEPARTMENT OF TRANSPORTATION  
DIVISION OF HIGHWAYS

SUBMITTED MARCH 19 20 15

*Kennel A. Barnett*  
DEPUTY DIRECTOR OF HIGHWAYS, REGION ENGINEER

MAY 8 20 15  
*Dino D. Baranzelli PE*  
ENGINEER OF DESIGN AND ENVIRONMENT

MAY 8 20 15  
*Cher Osman PE*  
DIRECTOR OF HIGHWAYS, CHIEF ENGINEER

**PRINTED BY THE AUTHORITY  
OF THE STATE OF ILLINOIS**

# INDEX OF SHEETS

SHEET NO.	DESCRIPTION
1	COVER SHEET
2	INDEX OF SHEETS
2	HIGHWAY STANDARDS
2	GENERAL NOTES
3-6	SUMMARY OF QUANTITIES
7-10	PLAN DETAILS

# HIGHWAY STANDARDS

STANDARD NUMBER	NAME OF STANDARD
000001-06	STANDARD SYMBOLS, ABBREVIATIONS AND PATTERNS
001006	DECIMAL OF AN INCH AND OF A FOOT
630001-10	STEEL PLATE BEAM GUARDRAIL
630101-09	GUARDRAIL MOUNTED ON EXISTING CULVERTS
630201-06	PCC/HMA STABILIZATION AT STEEL PLATE BEAM GUARDRAIL
630301-06	SHOUDLER WIDENING FOR TYPE 1 (SPECIAL) GUARDRAIL TERMINALS
631011-09	TRAFFIC BARRIER TERMINAL, TYPE 2
631026-06	TRAFFIC BARRIER TERMINAL, TYPE 5
631031-13	TRAFFIC BARRIER TERMINAL, TYPE 6
631032-08	TRAFFIC BARRIER TERMINAL, TYPE 6A
631033-06	TRAFFIC BARRIER TERMINAL, TYPE 6B
631046-04	TRAFFIC BARRIER TERMINAL, TYPE 10
635006-03	REFLECTOR AND TERMINAL MARKER PLACEMENT
635011-02	REFLECTOR MARKER AND MOUNTING DETAILS
643001-02	SAND MODULE IMPACT ATTENUATORS
664001-02	CHAIN LINK FENCE
665001-02	WOVEN WIRE FENCE
701001-02	OFF-ROAD OPERATIONS, 2L, 2W, MORE THAN 15' (4.5 M) AWAY
701006-05	OFF-ROAD OPERATIONS, 2L, 2W, 15' (4.5 M) TO 24" (600 MM) FROM PAVEMENT EDGE
701101-04	OFF-ROAD OPERATIONS, MULTILANE, 15' (4.5 M) TO 24" (600 MM) FROM PAVEMENT EDGE
701106-02	OFF-ROAD OPERATIONS, MULTILANE, MORE THAN 15' (4.5 M) AWAY
701201-04	LANE CLOSURE, 2L, 2W, DAY ONLY, FOR SPEEDS ≥ 45 MPH
701206-03	LANE CLOSURE, 2L, 2W, NIGHT ONLY, FOR SPEEDS ≥ 45 MPH
701301-04	LANE CLOSURE, 2L, 2W, SHORT TIME OPERATIONS
701400-08	APPROACH TO LANE CLOSURE, FREEWAY/EXPRESSWAY
701401-09	LANE CLOSURE, FREEWAY/EXPRESSWAY
701406-09	LANE CLOSURE, FREEWAY/EXPRESSWAY, DAY OPERATIONS ONLY
701411-09	LANE CLOSURE, MULTILANE, AT ENTRANCE OR EXIT RAMP, FOR SPEEDS ≥ 45 MPH
701421-07	LANE CLOSURE, MULTILANE, DAY OPERATIONS ONLY, FOR SPEEDS ≥ 45 MPH TO 55 MPH
701422-07	LANE CLOSURE, MULTILANE, FOR SPEEDS ≥ 45 MPH TO 55 MPH
701428	TRAFFIC CONTROL SETUP AND REMOVAL FREEWAY/EXPRESSWAY
701456-03	PARTIAL EXIT RAMP CLOSURE FREEWAY/EXPRESSWAY
701501-06	URBAN LANE CLOSURE, 2L, 2W, UNDIVIDED
701502-06	URBAN LANE CLOSURE, 2L, 2W, WITH BIDIRECTIONAL LEFT TURN LANE
701601-09	URBAN LANE CLOSURE, MULTILANE, 1W OR 2W WITH NONTRAVERSABLE MEDIAN
701602-07	URBAN LANE CLOSURE, MULTILANE, 2W WITH BIDIRECTIONAL LEFT TURN LANE
701606-10	URBAN LANE CLOSURE, MULTILANE, 2W WITH MOUNTABLE MEDIAN
701701-09	URBAN LANE CLOSURE, MULTILANE INTERSECTION
701901-04	TRAFFIC CONTROL DEVICES

# GENERAL NOTES

G.N.-100  
ENGLISH UNITS OF MEASUREMENT SHALL GOVERN OVER AND SUPERSEDE ANY METRIC UNITS SHOWN IN THIS CONTRACT. WHERE INCLUDED, METRIC UNITS ARE FOR INFORMATION ONLY.

G.N.-100A  
ELECTRONIC FILES AND/OR ELECTRONIC SURVEY INFORMATION INCLUDING CADD FILES WILL NOT BE AVAILABLE TO THE CONTRACTOR.

G.N.-631  
IF THE CONTRACTOR ELECTS TO USE THE ALTERNATE MOUNTING METHOD OF THRU DRILLING THE MOUNTING HOLES FOR THE TRAFFIC BARRIER TERMINALS, TYPE 6, THE HOLES SHALL BE DRILLED USING A CORE DRILL. A HAMMER DRILL WILL NOT BE ALLOWED.

NO COMMITMENTS

\* DS GRDL & FENCE REPAIR 2016-1

FILE NAME *	USER NAME * oombossf	DESIGNED -	REVISED -	<b>STATE OF ILLINOIS DEPARTMENT OF TRANSPORTATION</b>	<b>INDEX OF SHEETS, HIGHWAY STANDARDS &amp; GENERAL NOTES</b>	F.A. RTE.	SECTION	COUNTY	TOTAL SHEETS	SHEET NO.
si:\pwork\p\idat\oombossf\0427812\7037-sht-plan.dgn	DRAWN -	REVISED -	VAR.				VARIOUS	10	2	
PLOT SCALE * 40,0000 1 / in.	CHECKED -	REVISED -	CONTRACT NO. 70B37							
PLOT DATE * 3/18/2015	DATE -	REVISED -	ILLINOIS FED. AID PROJECT							
#MODELNAME*				SCALE:	SHEET OF SHEETS	STA. TO STA.				

LOCATION OF WORK:

VARIOUS ROUTES      VARIOUS ROUTES      VARIOUS ROUTES

VARIOUS COUNTIES      VARIOUS COUNTIES      VARIOUS COUNTIES

CONSTRUCTION TYPE CODE:

0021      0021      0021

TOTAL      100% STATE      100% STATE      100% STATE

CODE NO	ITEM	UNIT	QUANTITY	MCHD	CONTRACT MAINT	HTCB
63000001	STEEL PLATE BEAM GUARDRAIL, TYPE A, 6 FOOT POSTS	FOOT	100.0	75.0	25.0	
63100045	TRAFFIC BARRIER TERMINAL, TYPE 2	EACH	4.0	2.0	2.0	
63100070	TRAFFIC BARRIER TERMINAL, TYPE 5	EACH	1.0	1.0		
63100085	TRAFFIC BARRIER TERMINAL, TYPE 6	EACH	1.0	1.0		
63100087	TRAFFIC BARRIER TERMINAL, TYPE 6A	EACH	1.0	1.0		
63100089	TRAFFIC BARRIER TERMINAL, TYPE 6B	EACH	1.0	1.0		
63100105	TRAFFIC BARRIER TERMINAL, TYPE 10	EACH	1.0	1.0		
63100167	TRAFFIC BARRIER TERMINAL, TYPE 1 (SPECIAL) TANGENT	EACH	25.0	16.0	9.0	
63100169	TRAFFIC BARRIER TERMINAL, TYPE 1 (SPECIAL) FLARED	EACH	8.0	4.0	4.0	
63400105	GUARD POSTS	EACH	10.0	10.0		
64300260	IMPACT ATTENUATORS (FULLY REDIRECTIVE, NARROW), TEST LEVEL 3	EACH	1.0	1.0		
64300370	IMPACT ATTENUATORS (FULLY REDIRECTIVE, WIDE), TEST LEVEL 3	EACH	1.0	1.0		
66400105	CHAIN LINK FENCE, 4'	FOOT	300.0	200.0	100.0	
66400305	CHAIN LINK FENCE, 6'	FOOT	450.0	250.0	200.0	

14

• D5 GRDL & FENCE REPAIR 2016-1

FILE NAME #	USER NAME #	DESIGNED -	REVISED -	<b>STATE OF ILLINOIS DEPARTMENT OF TRANSPORTATION</b>	<b>SUMMARY OF QUANTITIES</b>				F.A. RTE.	SECTION	COUNTY	TOTAL SHEETS	SHEET NO.	
cl:\pe_work\pjd\dot\scambass\108427010\70337-ent\plan.dgn		DRAWN -	REVISED -		SCALE:	SHEET	OF	SHEETS	STA.	TO STA.	VAR.	VARIOUS	10	3
		CHECKED -	REVISED -									CONTRACT NO.	70837	
#MODELNAME#		DATE -	REVISED -									ILLINOIS FED. AID PROJECT		

LOCATION OF WORK:

VARIOUS ROUTES

VARIOUS COUNTIES

CONSTRUCTION TYPE CODE:

0021 100% STATE

MCHD CONTRACT MAINT HTC

CODE NO	ITEM	UNIT	TOTAL QUANTITY	100% STATE MCHD	100% STATE CONTRACT MAINT	100% STATE HTC
66500105	WOVEN WIRE FENCE, 4'	FOOT	3,500.0	2,500.0	1,000.0	
66501200	WOVEN WIRE GATES, 4' X 8' DOUBLE	EACH	1.0	1.0		
78200410	GUARDRAIL MARKERS, TYPE A	EACH	14.0	8.0	6.0	
78201000	TERMINAL MARKER - DIRECT APPLIED	EACH	28.0	14.0	14.0	
X0325256	REPAIR HIGH TENSION CABLE (BRIFEN)	FOOT	70.0	40.0		30.0
X0325258	REPAIR HIGH TENSION CABLE SYSTEM END SECTION (BRIFEN)	EACH	2.0	1.0		1.0
X0325260	REPAIR POSTS (BRIFEN)	EACH	11.0	6.0		5.0
X0325899	REPAIR HIGH TENSION CABLE (GIBRALTAR)	FOOT	800.0	600.0		200.0
X0325901	REPAIR POSTS (GIBRALTAR)	EACH	800.0	600.0		200.0
X0325975	REPAIR HIGH TENSION CABLE SYSTEM END SECTION (GIBRALTAR)	EACH	18.0	16.0		2.0
X0326201	REPAIR HIGH TENSION CABLE (TRINITY)	FOOT	200.0	150.0		50.0
X0326202	REPAIR POSTS (TRINITY)	EACH	130.0	100.0		30.0
X0326203	REPAIR HIGH TENSION CABLE SYSTEM END SECTION (TRINITY)	EACH	4.0	2.0		2.0
X6330725	STEEL PLATE BEAM GUARDRAIL (SHORT RADIUS)	FOOT	50.0	25.0	25.0	

14

• DS GRDL & FENCE REPAIR 2016-1

FILE NAME #	USER NAME #	DESIGNED -	REVISED -	STATE OF ILLINOIS DEPARTMENT OF TRANSPORTATION	SUMMARY OF QUANTITIES				F.A. RTE.	SECTION	COUNTY	TOTAL SHEETS	SHEET NO.
ci:\pwork\pwork\combest\02427810\70837-sht-plan.dgn	combest	DRAWN -	REVISED -		SCALE:	SHEET	OF	SHEETS	STA.	TO STA.	VARIOUS	10	4
		CHECKED -	REVISED -								ILLINOIS FED. AID PROJECT		
		DATE -	REVISED -								CONTRACT NO. 70837		

LOCATION OF WORK:

VARIOUS ROUTES

VARIOUS COUNTIES

CONSTRUCTION TYPE CODE:

0021 100% STATE

MCHD CONTRACT MAINT HTC8

CODE NO	ITEM	UNIT	TOTAL QUANTITY	100% STATE MCHD	100% STATE CONTRACT MAINT	100% STATE HTC8
X6331110	STEEL POSTS, SPECIAL	EACH	2.0	2.0		
X6340205	GUARD POSTS REMOVAL	EACH	10.0	10.0		
X6432110	REPLACE IMPACT ATTENUATORS (NON-REDIRECTIVE), TEST LEVEL 3	EACH	90.0	75.0	15.0	
X6640594	CHAIN LINK FENCE POST 4'	EACH	24.0	15.0	9.0	
X6640601	CHAIN LINK FENCE POST 6'	EACH	24.0	15.0	9.0	
X7010410	SPEED DISPLAY TRAILER	CAL MO	12.0	8.0	4.0	
Z0008760	EMERGENCY WORK CALL OUT	EACH	40.0	25.0	15.0	
Z0012752	CONCRETE STRUCTURE REPAIR	CU FT	11.0	8.0	3.0	
Z0020210	PULL POST ARRANGEMENT	EACH	28.0	20.0	8.0	
Z0052000	REPAIR STEEL PLATE BEAM GUARDRAIL, TYPE A	FOOT	4,700.0	3,000.0	1,700.0	
Z0052100	REPAIR STEEL PLATE BEAM GUARDRAIL, TYPE B	FOOT	25.0	25.0		
Z0052410	REPAIR TRAFFIC BARRIER TERMINAL, TYPE 1 SPECIAL (TANGENT)	EACH	20.0	14.0	6.0	
Z0052415	REPAIR TRAFFIC BARRIER TERMINAL, TYPE 1 SPECIAL (FLARED)	EACH	4.0	2.0	2.0	
Z0052600	REPAIR TRAFFIC BARRIER TERMINAL, TYPE 2	EACH	4.0	2.0	2.0	
Z0053000	REPAIR TRAFFIC BARRIER TERMINAL, TYPE 5	EACH	1.0	1.0		

14

• 05 GRDL & FENCE REPAIR 2016-1

FILE NAME =	USER NAME = coombess	DESIGNED -	REVISED -	STATE OF ILLINOIS DEPARTMENT OF TRANSPORTATION	SUMMARY OF QUANTITIES				F.A. RTE.	SECTION	COUNTY	TOTAL SHEETS	SHEET NO.	
ct:\pvc\work\pvc\dot\coombess\160427810\178137-shc-plan.dgn		DRAWN -	REVISED -		SCALE:	SHEET	OF	SHEETS	STA.	TO STA.	VAR.	VARIOUS	10	5
		CHECKED -	REVISED -									CONTRACT NO.	70837	
		DATE -	REVISED -									ILLINOIS FED. AID PROJECT		

LOCATION OF WORK:

VARIOUS ROUTES	VARIOUS ROUTES	VARIOUS ROUTES
VARIOUS COUNTIES	VARIOUS COUNTIES	VARIOUS COUNTIES

CONSTRUCTION TYPE CODE:

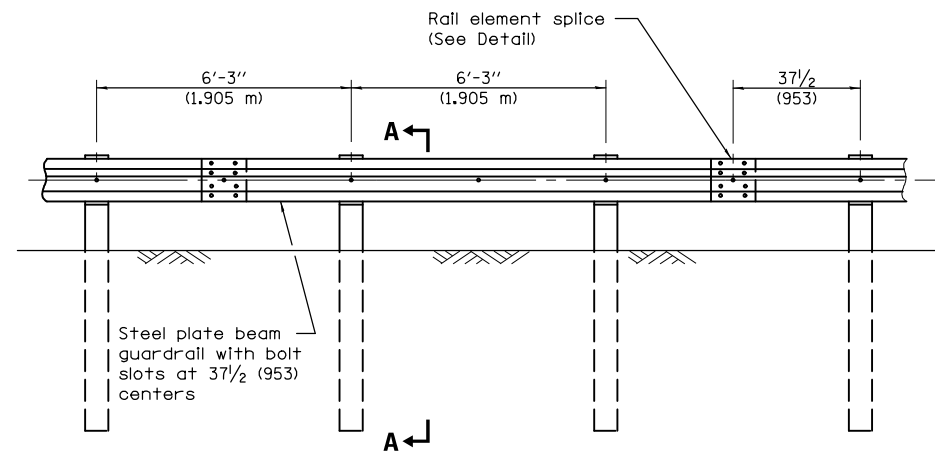
0021	0021	0021
100% STATE	100% STATE	100% STATE
MCHD	CONTRACT MAINT	HTCB

CODE NO	ITEM	UNIT	TOTAL QUANTITY	100% STATE MCHD	100% STATE CONTRACT MAINT	100% STATE HTCB
Z0053200	REPAIR TRAFFIC BARRIER TERMINAL, TYPE 6	EACH	4.0	2.0	2.0	
Z0053210	REPAIR TRAFFIC BARRIER TERMINAL, TYPE 6A	EACH	1.0	1.0		
Z0053220	REPAIR TRAFFIC BARRIER TERMINAL, TYPE 6B	EACH	1.0	1.0		
X2300003	SPLICING HIGH TENSION CABLE (BRIFEN)	EACH	1.0	1.0		
X2300004	SPLICING HIGH TENSION CABLE (GIBALTAR)	EACH	5.0	3.0		2.0
X2300005	SPLICING HIGH TENSION CABLE (TRINITY)	EACH	2.0	2.0		

6

\* 05 GRDL & FENCE REPAIR 2016-1

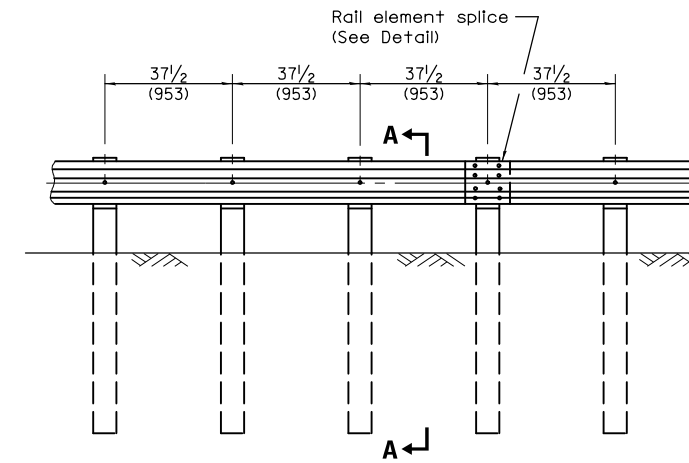
FILE NAME *	USER NAME *	DESIGNED -	REVISED -	<b>STATE OF ILLINOIS DEPARTMENT OF TRANSPORTATION</b>	<b>SUMMARY OF QUANTITIES</b>				F.A. RTE.	SECTION	COUNTY	TOTAL SHEETS	SHEET NO.
cr:\pwwork\avidot\coombasf\02427810\70037-shc-plan.dgn		DRAWN -	REVISED -		SCALE:	SHEET	OF	SHEETS	STA.	TO STA.	VARIOUS	10	6
		CHECKED -	REVISED -										
		DATE -	REVISED -										
MODELNAME*	PLOT DATE * 3/18/2015										CONTRACT NO. 70B37		
												ILLINOIS FED. AID PROJECT	



**ELEVATION**

**TYPE A**

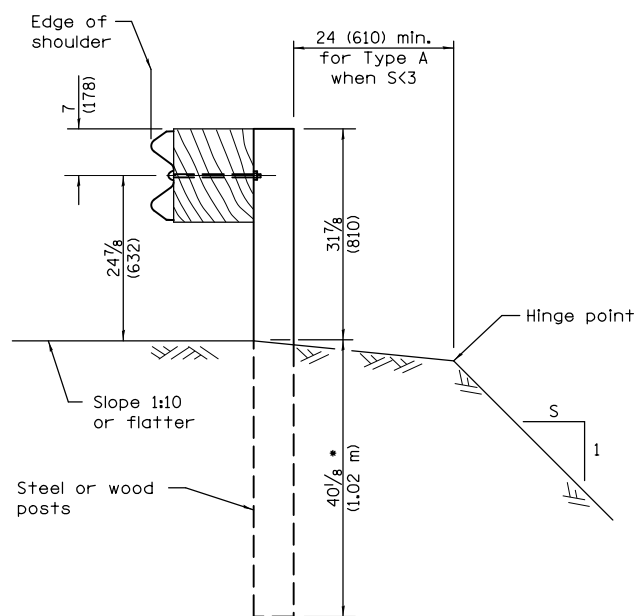
6'-3" (1.905 m) Typical post spacing



**ELEVATION**

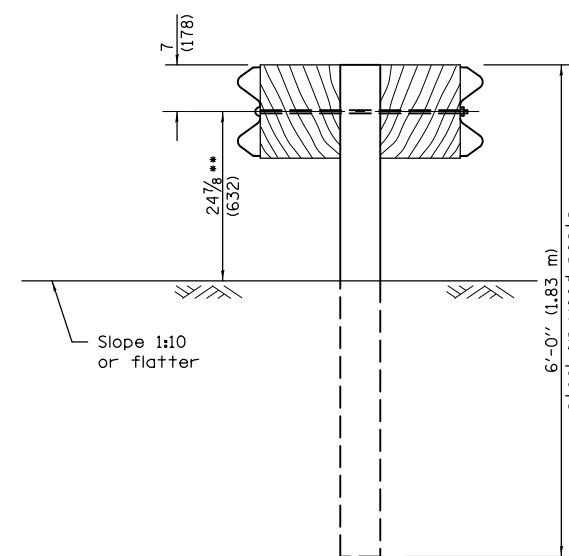
**TYPE B**

37 1/2 (953) Closed post spacing



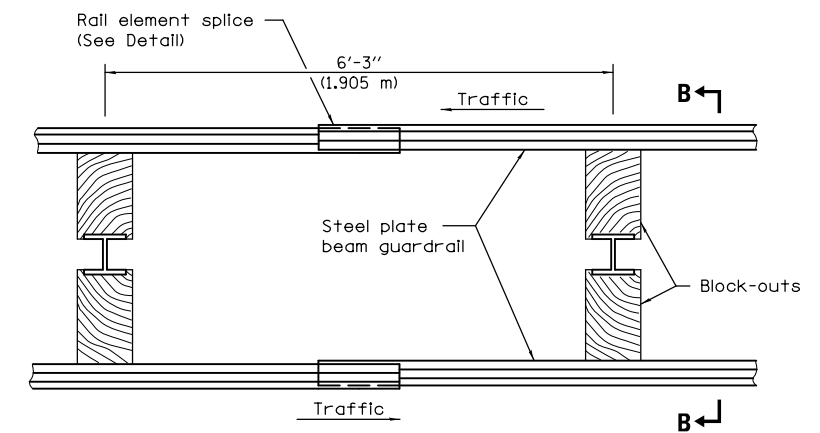
**SECTION A-A**

- When "S" is less than 3 and the distance from the back of post is less than 24 (610), the post shall be steel and the embedment shall be 76 7/8 (1934).



**SECTION B-B**

- When connecting Type D guardrail to an impact attenuator, adjust this dimension to 21 7/8 (556) over a distance of 25'-0" (7.62 m) from point of connection.



**PLAN**

**TYPE D**

Double steel plate beam guardrail  
6'-3" (1.905 m) typical post spacing

**GENERAL NOTES**

All slope ratios are expressed as units of vertical displacement to units of horizontal displacement (V:H).

All dimensions are in inches (millimeters) unless otherwise shown.

**STEEL PLATE BEAM GUARDRAIL**

(Sheet 1 of 4)

**STANDARD 630001-10**

• D5 GRDRL & FENCE REPAIR 2016-1

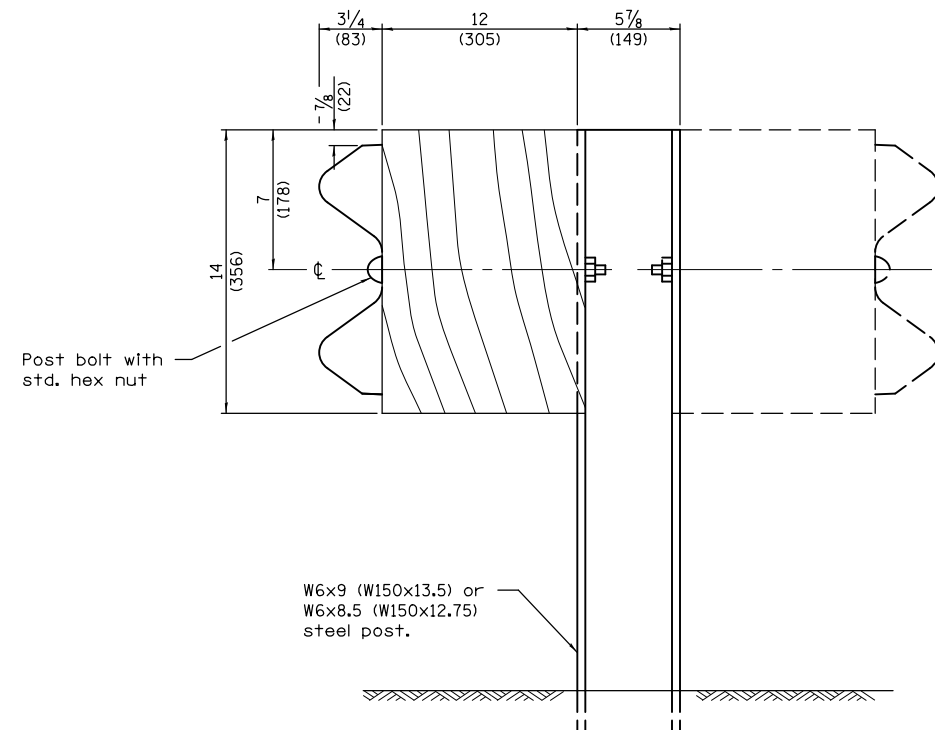
FILE NAME =	USER NAME = coombessf	DESIGNED -	REVISED -
ci:\pw_work\p\idot\coombessf\d0427810\70337-sht-plan.dgn		DRAWN -	REVISED -
	PLOT SCALE = 40.0000' / in.	CHECKED -	REVISED -
\$MODELNAME\$	PLOT DATE = 3/18/2015	DATE -	REVISED -

**STATE OF ILLINOIS  
DEPARTMENT OF TRANSPORTATION**

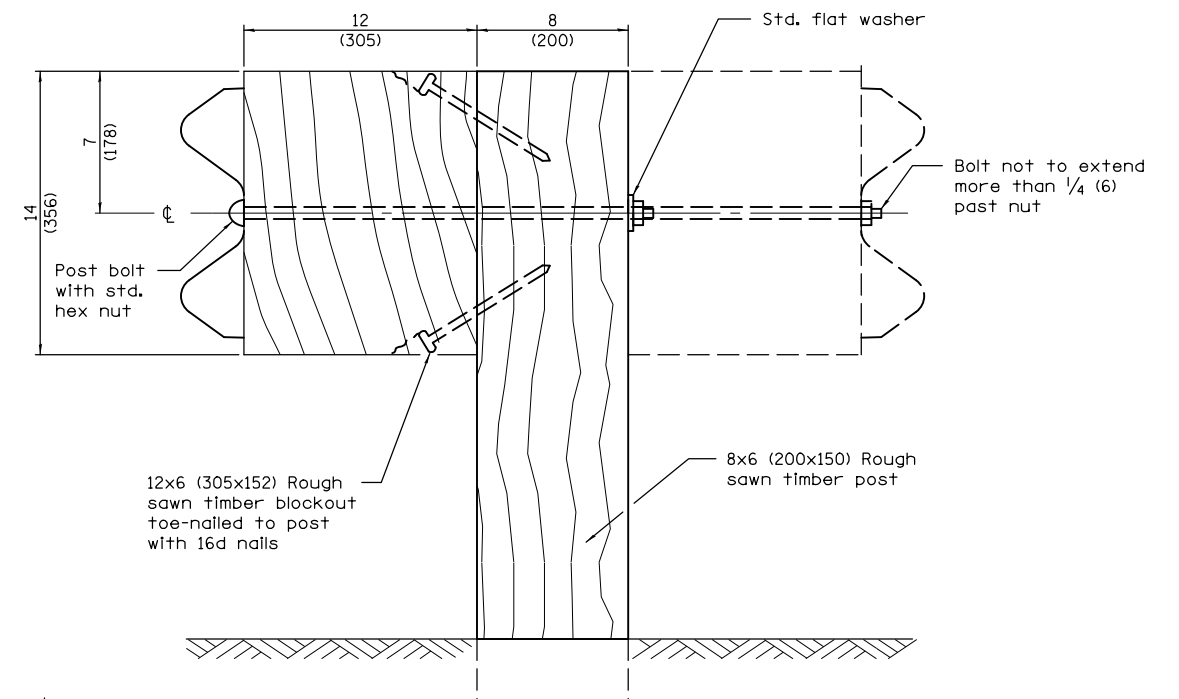
**DETAIL OF 27 1/2" STEEL PLATE BEAM GUARDRAIL**

SCALE: SHEET 1 OF 4 SHEETS STA. TO STA.

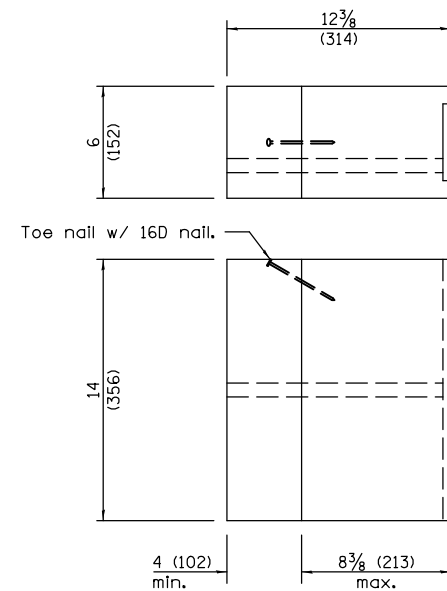
F.A. RTE.	SECTION	COUNTY	TOTAL SHEETS	SHEET NO.
VAR.	•	VARIOUS	10	7
			CONTRACT NO. 70B37	
ILLINOIS FED. AID PROJECT				



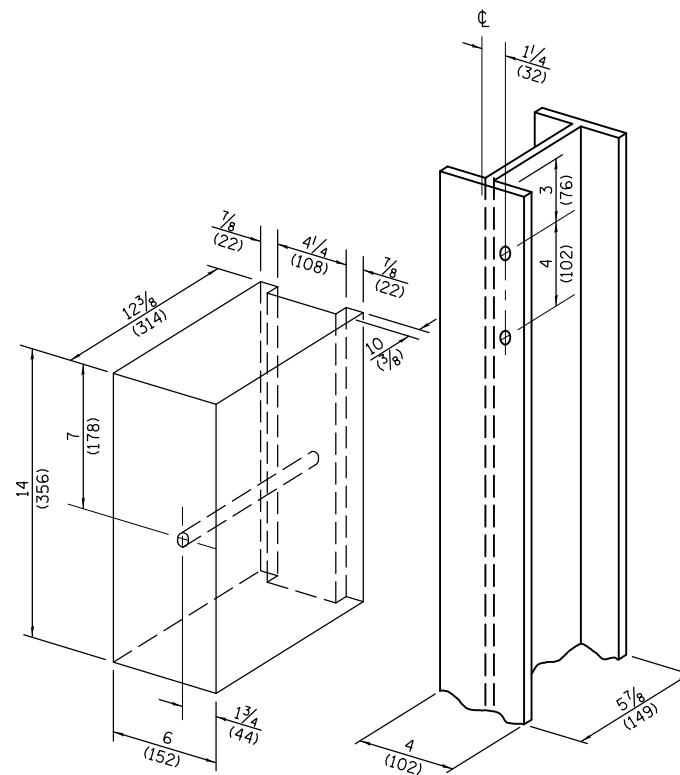
**STEEL POST CONSTRUCTION**



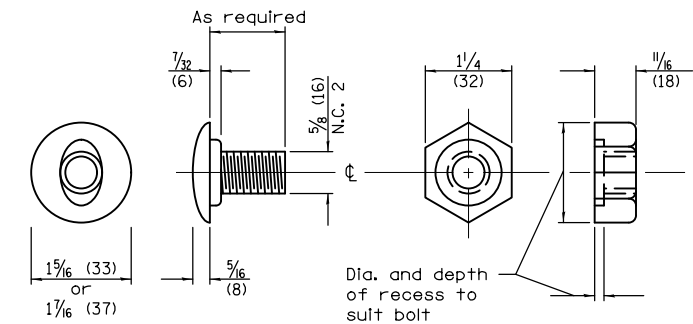
**WOOD POST CONSTRUCTION**



**TWO-PIECE WOOD BLOCKOUT OPTION**



**WOOD BLOCK-OUT AND STEEL POST DETAILS**



**POST OR SPLICE BOLT & NUT**

**STEEL PLATE BEAM GUARDRAIL**

(Sheet 2 of 4)

**STANDARD 630001-10**

• D5 GRDL & FENCE REPAIR 2016-1

FILE NAME =	USER NAME = coombessf	DESIGNED -	REVISED -
c:\pwork\work\pwork\coombessf\d0427810\70837-sht-plan.dgn		DRAWN -	REVISED -
	PLOT SCALE = 40.0000' / in.	CHECKED -	REVISED -
\$MODELNAME\$	PLOT DATE = 3/18/2015	DATE -	REVISED -

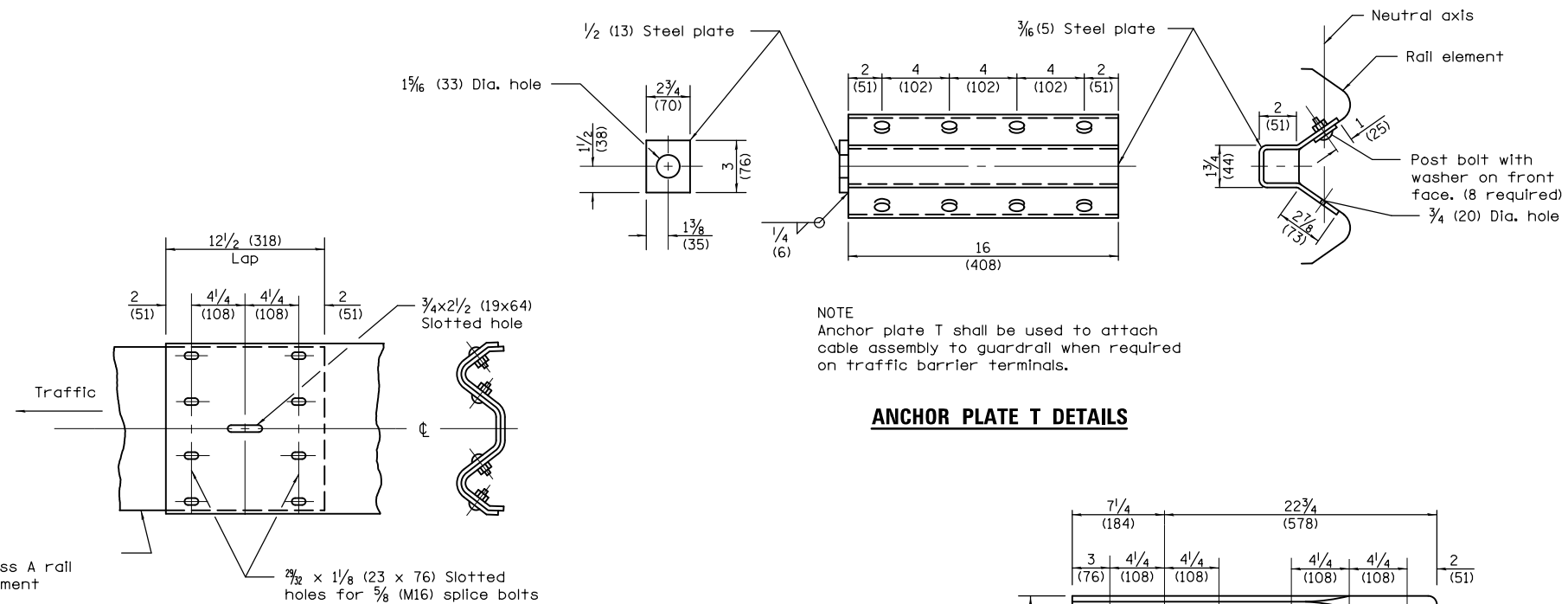
**STATE OF ILLINOIS  
DEPARTMENT OF TRANSPORTATION**

**DETAIL OF 27 1/2" STEEL PLATE BEAM GUARDRAIL**

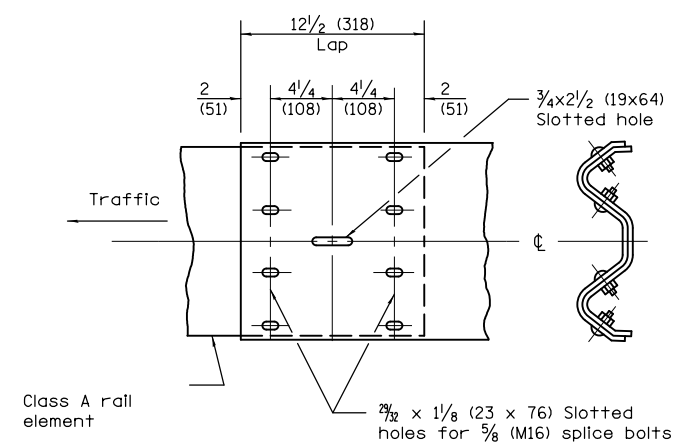
SCALE: SHEET 2 OF 4 SHEETS STA. TO STA.

F.A. RTE.	SECTION	COUNTY	TOTAL SHEETS	SHEET NO.
VAR.	•	VARIOUS	10	8
CONTRACT NO. 70B37				
ILLINOIS FED. AID PROJECT				

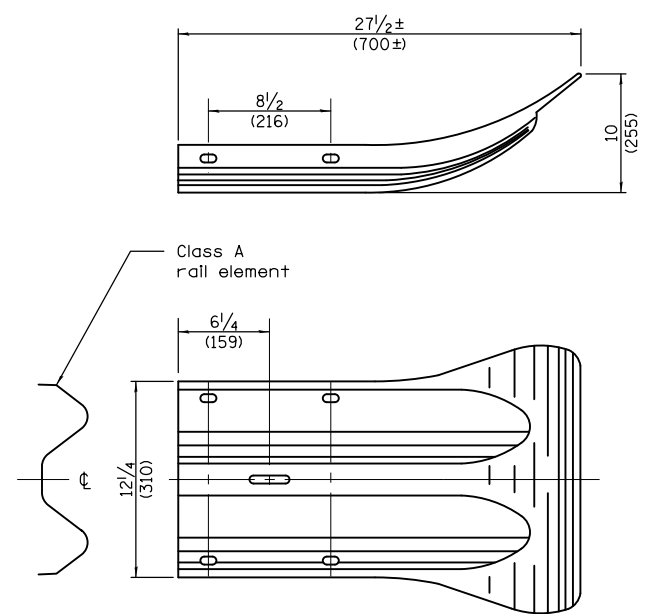




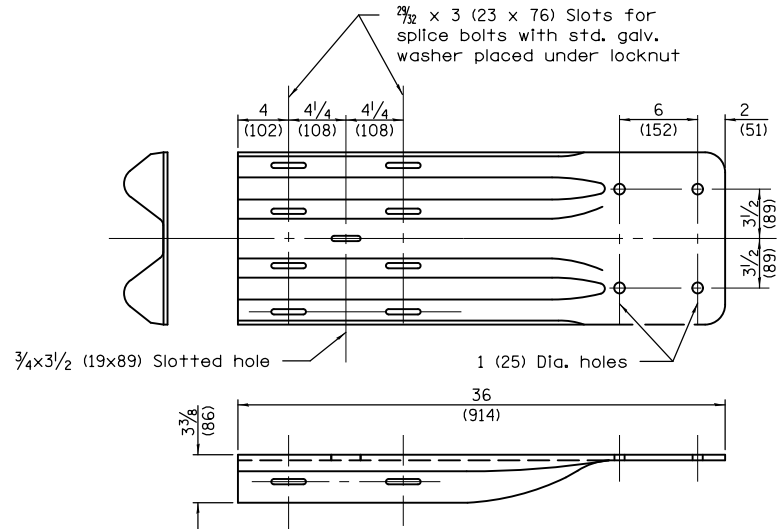
**ANCHOR PLATE T DETAILS**



**RAIL ELEMENT SPLICE**



**END SECTION**

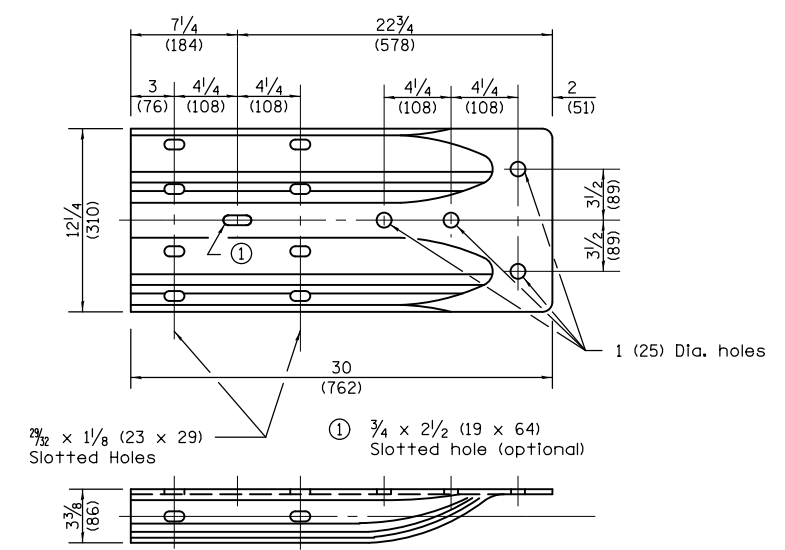


**END SHOE**

NOTE  
When end shoe is attached to a bridge parapet which has an expansion joint, the bolts shall be provided with a locknut or double nut and shall be tightened only to a point that will allow guardrail movement.

The standard end shoe shall be attached to the concrete with pre-drilled or self-drilling anchor bolts. The anchor cone shall be set flush with the surface of the concrete.

Externally threaded studs protruding from the surface of the concrete will not be permitted.



**ALTERNATE END SHOE**

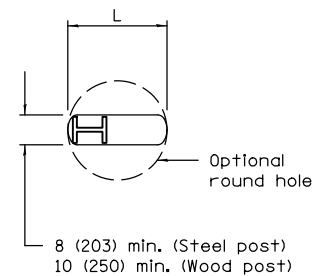
**STEEL PLATE BEAM  
GUARDRAIL**

(Sheet 3 of 4)

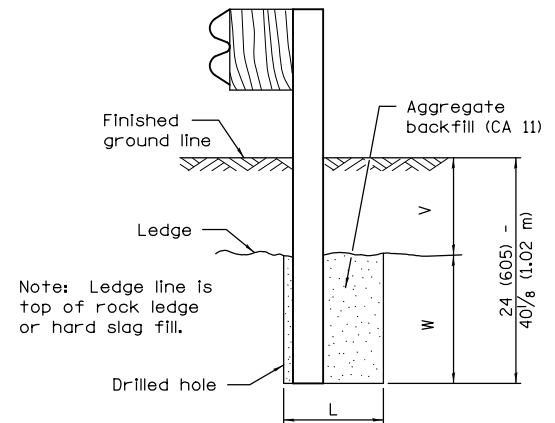
**STANDARD 630001-10**

• D5 GRDRL & FENCE REPAIR 2016-1

SCALE: SHEET 3 OF 4 SHEETS STA. TO STA.

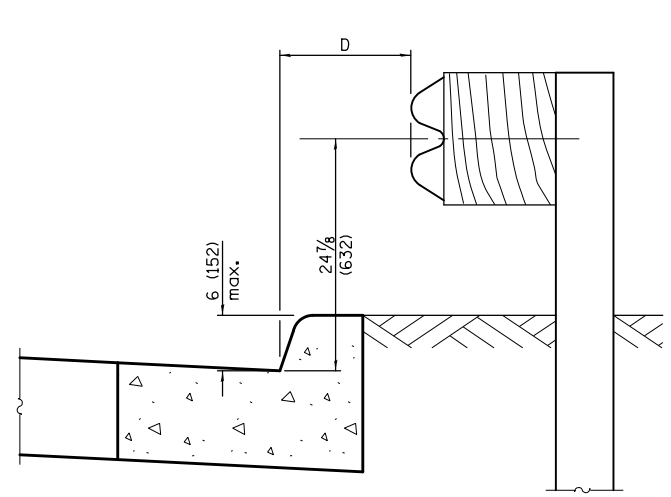


**PLAN**

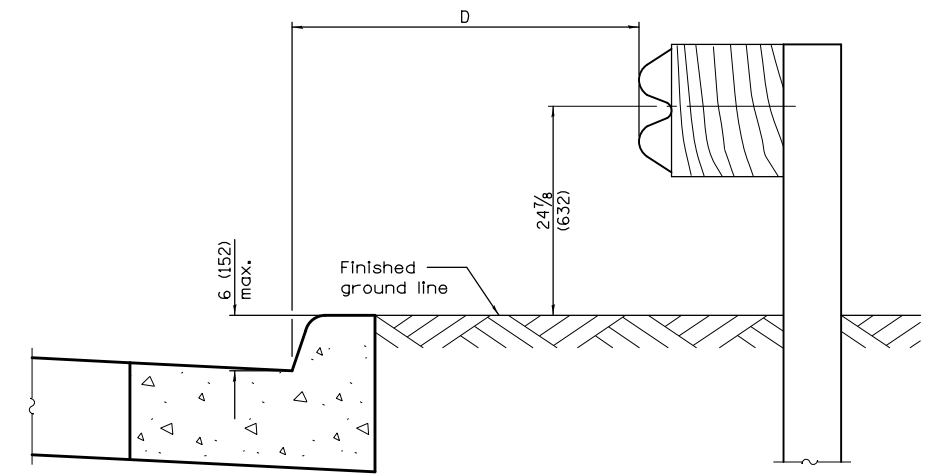


**ELEVATION**

**FOOTING FOR POST WHEN IMPERVIOUS MATERIAL IS ENCOUNTERED**



**0 ≤ D < 4'-0" (1.2 m)**

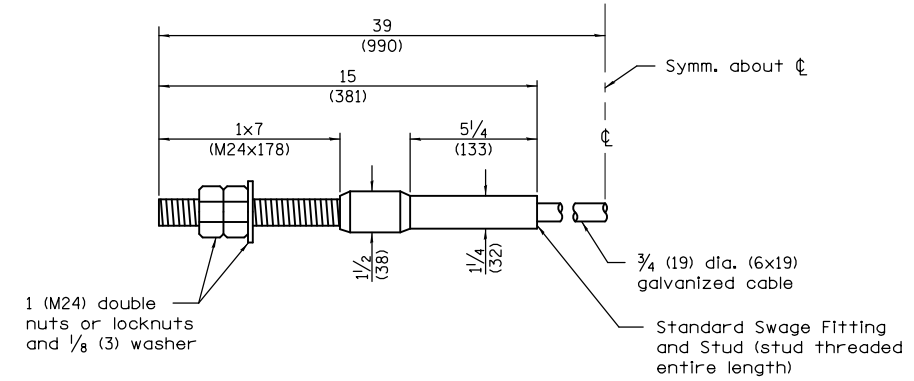


**4'-0" (1.2 m) ≤ D ≤ 12'-0" (3.7 m)**

**GUARDRAIL PLACED BEHIND CURB**

Note: 'D' shall not exceed 6 (152) for design speeds greater than 45 mph.

V	W	L	
		Steel Post	Wood Post
0 - 6 (0 - 152)	24 (610)	21 (530)	23 (580)
> 6 - 18 (> 152 - 458)	18 (458)	14 1/2 (368)	16 1/2 (419)
> 18 - 31 (> 458 - 787)	12 (305)	8 (203)	10 (250)
> 31 - 40 7/8 (> 787 - 1.02 m)	12 - 0 (305 - 0)	8 (203)	10 (250)



**CABLE ASSEMBLY**

(40,000 lbs. (18,100 kg) min. breaking strength)  
Tighten to taut tension.

**STEEL PLATE BEAM  
GUARDRAIL**

(Sheet 4 of 4)

**STANDARD 630001-10**

FILE NAME =	USER NAME = coombessf	DESIGNED -	REVISED -
ei:\pw\work\p\idot\coombessf\d0427810\70837-sht-plan.dgn		DRAWN -	REVISED -
	PLOT SCALE = 40.0000' / in.	CHECKED -	REVISED -
*MODELNAME*	PLOT DATE = 3/18/2015	DATE -	REVISED -

**STATE OF ILLINOIS  
DEPARTMENT OF TRANSPORTATION**

**DETAIL OF 271/2" STEEL PLATE BEAM GUARDRAIL**

SCALE: SHEET 4 OF 4 SHEETS STA. TO STA.

F.A. RTE.	SECTION	COUNTY	TOTAL SHEETS	SHEET NO.
VAR.	*	VARIOUS	10	10
CONTRACT NO. 70B37				
ILLINOIS FED. AID PROJECT				

• D5 GRDL & FENCE REPAIR 2016-1