

STATE OF ILLINOIS
DEPARTMENT OF TRANSPORTATION
DIVISION OF HIGHWAYS

**PROPOSED
HIGHWAY PLANS**

F.A.P. ROUTE 325, F.A.P. ROUTE 91 (IL. RTE. 16)
SECTION D7 PATCHING 2015-4

**PATCHING
COLES COUNTY**

C-97-085-14

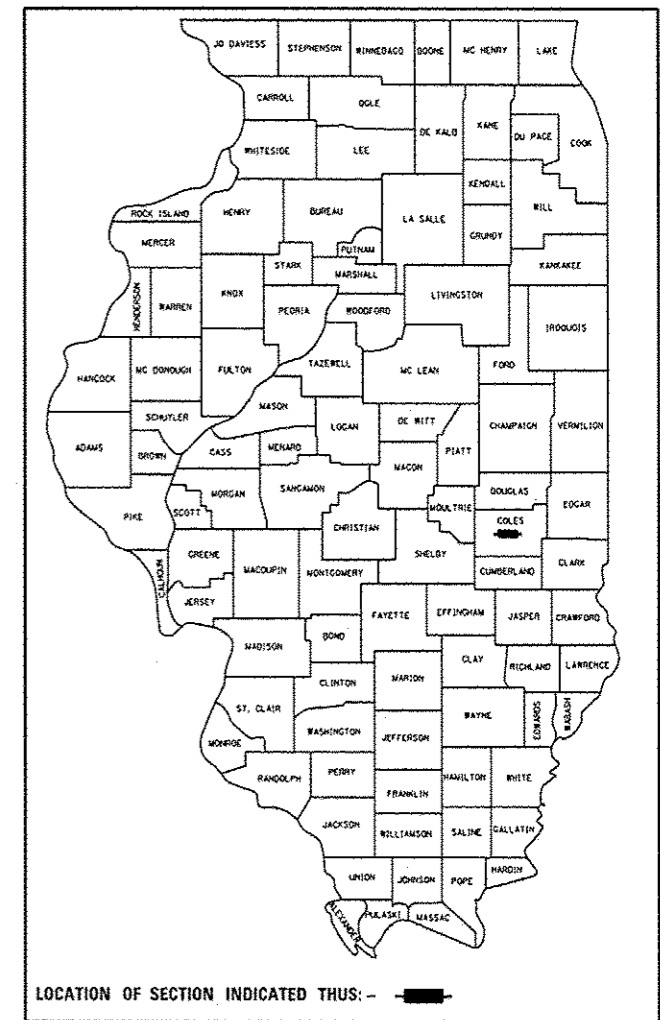
FOR INDEX OF SHEETS, SEE SHEET NO. 2

ADT = 17,250 (2009)

F.A. RTE.	SECTION	COUNTY	TOTAL SHEETS	SHEET NO.
*	D7 PATCHING 2015-4	COLES	3	1
		ILLINOIS	CONTRACT NO. 74679	

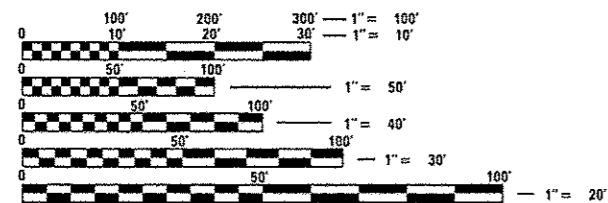
* FAP 325 & FAP 91

D-97-039-14



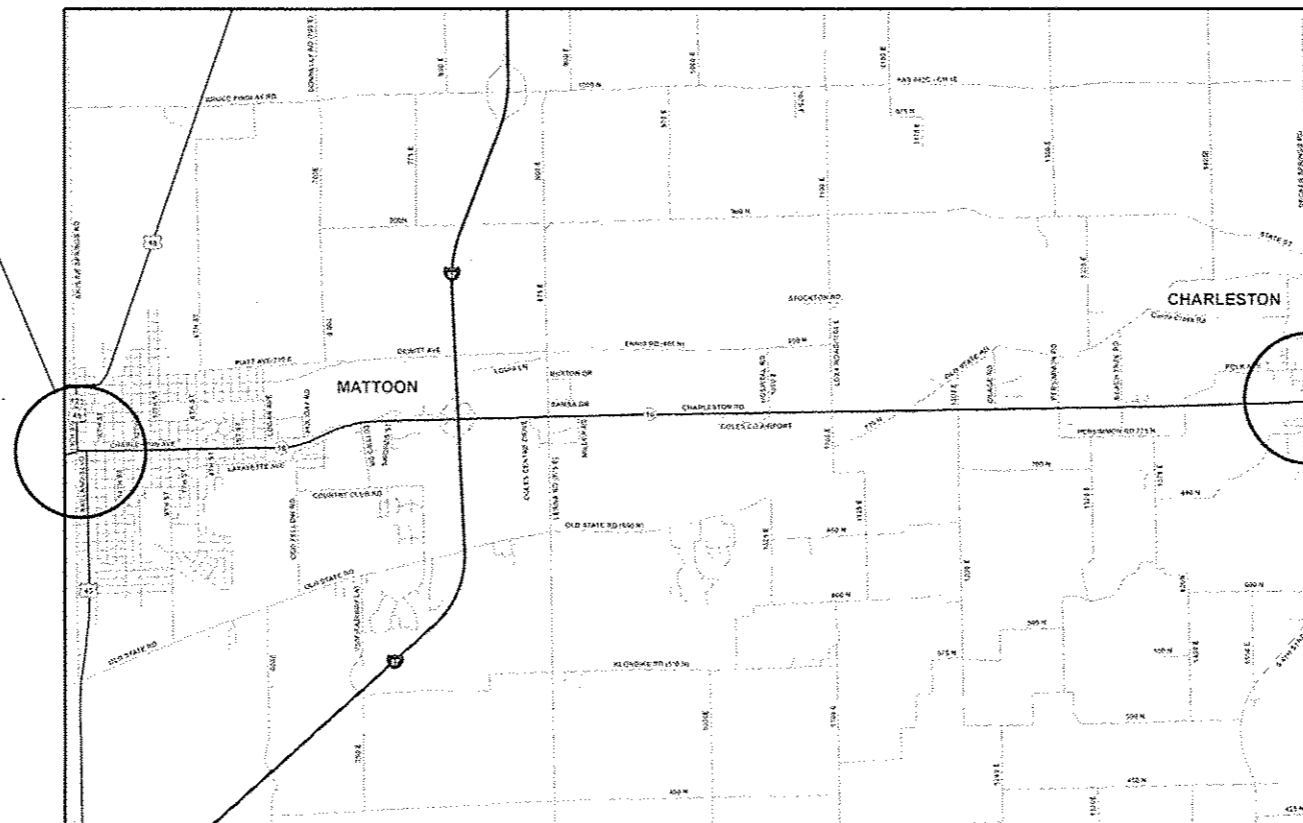
PROJECT BEGINS:
U.S. RTE. 45
(LAKELAND BLVD.)

PROJECT ENDS:
DOUGLAS DR.



FULL SIZE PLANS HAVE BEEN PREPARED USING STANDARD ENGINEERING SCALES. REDUCED SIZED PLANS WILL NOT CONFORM TO STANDARD SCALES. IN MAKING MEASUREMENTS ON REDUCED PLANS, THE ABOVE SCALES MAY BE USED.

J.U.L.I.E.
JOINT UTILITY LOCATION INFORMATION FOR EXCAVATION
1-800-892-0123
OR 811



PROJECT ENGINEER: TOM RONAN
PROJECT MANAGER: TOM RONAN
PHONE: (217)-342-8320
CONTRACT NO. 74679

GROSS LENGTH = 51,163 FT. = 9.69 MILES
NET LENGTH = 51,163 FT. = 9.69 MILES

STATE OF ILLINOIS
DEPARTMENT OF TRANSPORTATION
DIVISION OF HIGHWAYS

SUBMITTED JANUARY 14 20 15
Roger L. Driskell
DEPUTY DIRECTOR OF HIGHWAYS, REGION ENGINEER

May 8 20 15
John D. Baranzelli PE, JR.
ENGINEER OF DESIGN AND ENVIRONMENT

May 8 20 15
Omer Osman PE, JR.
DIRECTOR OF HIGHWAYS, CHIEF ENGINEER

**PRINTED BY THE AUTHORITY
OF THE STATE OF ILLINOIS**

INDEX OF SHEETS

SHEET NO.	ITEM
1	COVER SHEET
2	INDEX OF SHEETS, HIGHWAY STANDARDS, GENERAL NOTES, DETECTOR LOOP TABLE, & SCHEDULE
3	SUMMARY OF QUANTITIES

THE FOLLOWING STANDARDS ARE A PART OF THESE PLANS AND ARE INCLUDED AFTER SHEET NO. 3:

STD. NO.	DESCRIPTION
000001-06	STANDARD SYMBOLS, ABBREVIATIONS AND PATTERNS
420701-02	PAVEMENT FABRIC
442101-07	CLASS B PATCHES
701101-04	OFF-ROAD OPERATIONS, MULTI-LANE, LESS THAN 15' TO PAVEMENT EDGE
701106-02	OFF-ROAD OPERATIONS, MULTI-LANE, MORE THAN 15' AWAY
701411-09	LANE CLOSURE, MULTI-LANE, ENTRANCE OR EXIT RAMP
701422-07	LANE CLOSURE, MULTI-LANE, 45 - 55 MPH
701602-07	URBAN LANE CLOSURE, MULTI-LANE, TWO-WAY WITH BI-DIRECTIONAL TURN LANE
701701-09	URBAN LANE CLOSURE, MULTI-LANE, INTERSECTION
701901-04	TRAFFIC CONTROL DEVICES
886001-01	DETECTOR LOOP INSTALLATIONS
886006-01	TYPICAL LAYOUT FOR DETECTOR LOOPS

NUMBER OF TURNS REQUIRED IN DETECTOR LOOPS

6 X 6		LOOP SIZE
		2 TURNS
		3 TURNS
0	545	4 TURNS
546	818	5 TURNS
819	1145	6 TURNS
1146	1527	7 TURNS
1528	1964	8 TURNS
1965	2455	9 TURNS
2456	3000	10 TURNS

THE NUMBERS IN THE TABLE REPRESENT THE LENGTH OF ELECTRIC CABLE FROM THE LOOP TO THE CABINET

GENERAL NOTES

THIS SECTION SHALL BE CONSTRUCTED IN ACCORDANCE WITH THE PLANS; THE "STANDARD SPECIFICATIONS FOR ROAD AND BRIDGE CONSTRUCTION" ADOPTED JANUARY 1, 2012; AND THE SPECIAL PROVISIONS INCLUDED IN THE PROPOSAL.

THIS PROJECT IS LOCATED ON ILLINOIS ROUTE 16 IN COLES COUNTY. THE PROJECT STARTS AT US ROUTE 45 IN MATTOON AND EXTENDS EAST FOR APPROXIMATELY 9.69 MILES TO DOUGLAS DRIVE IN CHARLESTON. THE WORK INCLUDED IN SECTION D7 PATCHING 2015-4 CONSISTS OF CLASS B PAVEMENT PATCHING, DETECTOR LOOPS, TRAFFIC CONTROL AND ANY OTHER WORK NECESSARY TO COMPLETE THE SECTION.

THE ACTUAL LOCATIONS OF PAVEMENT PATCHING AND FINAL QUANTITIES SHALL BE DETERMINED BY THE ENGINEER IN THE FIELD.

AN ESTIMATED QUANTITY OF DETECTOR LOOPS, TYPE I HAS BEEN INCLUDED TO REPLACE ANY DETECTOR LOOPS THAT ARE WITHIN THE LIMITS OF A PATCH. THE ACTUAL LOCATIONS OF DETECTOR LOOPS AND FINAL QUANTITIES SHALL BE DETERMINED BY THE ENGINEER IN THE FIELD.

PATCHING SCHEDULE

PATCHING SCHEDULE	CLASS B PATCHES, TYPE II, 15"	CLASS B PATCHES, TYPE III, 15"	CLASS B PATCHES, TYPE IV, 15"	DOWEL BARS 1 1/2"	TIE BARS, 3/4"	PAVEMENT FABRIC	SAW CUTS
	SQ YD	SO YD	SO YD	EACH	EACH	SO YD	FOOT
EBDL	799	48	54	1852	18	102	4794
EBPL	709			1680			4213
WBDL	352			840			2103
WBPL	336			840			2079
TOTALS	2196	48	54	5212	18	102	13189

• FAP 325 & FAP 91

FILE NAME =	USER NAME = steffennk	DESIGNED -	REVISED -	STATE OF ILLINOIS DEPARTMENT OF TRANSPORTATION	INDEX OF SHEETS, GENERAL NOTES, DETECTOR LOOP TABLE AND PATCHING SCHEDULE	F.A. RTE.	SECTION	COUNTY	TOTAL SHEETS	SHEET NO.
c:\pwork\pwork\steffennk\0296963\02	74679-ant-index.dgn	DRAWN -	REVISED -			D7 PATCHING 2015-4	COLES	3	2	
	PLOT SCALE = 1/8"=1'-0"	CHECKED -	REVISED -			CONTRACT NO. 74679				
Default	PLOT DATE = 2/6/2015	DATE -	REVISED -			ILLINOIS PER. AID PROJECT				
					SCALE: N/A	SHEET 1 OF 1 SHEETS		STA. TO STA.		

SUMMARY OF QUANTITIES			TOTAL QUANTITIES	CONSTRUCTION TYPE CODE		
CODE NO	ITEM	UNIT		URBAN 100% STATE 0005		
44201031	CLASS B PATCHES, TYPE II, 15 INCH	SO YD	2196	2196		
44201035	CLASS B PATCHES, TYPE III, 15 INCH	SO YD	48	48		
44201037	CLASS B PATCHES, TYPE IV, 15 INCH	SO YD	54	54		
44201299	DOWEL BARS 1 1/2"	EACH	6212	6212		
44213100	PAVEMENT FABRIC	SO YD	102	102		
44213200	SAW CUTS	FOOT	13189	13189		
44213204	TIE BARS 3/4"	EACH	18	18		
67100100	MOBILIZATION	L SUM	1	1		
70100320	TRAFFIC CONTROL AND PROTECTION, STANDARD 701422	L SUM	1	1		
70100420	TRAFFIC CONTROL AND PROTECTION, STANDARD 701411	EACH	4	4		
70102632	TRAFFIC CONTROL AND PROTECTION, STANDARD 701602	L SUM	1	1		
70102635	TRAFFIC CONTROL AND PROTECTION, STANDARD 701701	L SUM	1	1		

SUMMARY OF QUANTITIES			TOTAL QUANTITIES	CONSTRUCTION TYPE CODE		
CODE NO	ITEM	UNIT		URBAN 100% STATE 0005		
70103815	TRAFFIC CONTROL SURVEILLANCE	CAL DA	20	20		
* 88600100	DETECTOR LOOP, TYPE I	FOOT	500	500		
X7015005	CHANGEABLE MESSAGE SIGN	CAL DA	28	28		
15						

* SPECIALTY ITEM

* FAP 325 & FAP 91

FILE NAME =	USER NAME = astaffemk	DESIGNED -	REVISED -
c:\p\work\pavdot\staffemk\2034690310\74679-ent-000.dgn		DRAWN -	REVISED -
		CHECKED -	REVISED -
Defaults	PLLOT SCALE = 100.0000 1/1 in.	DATE -	REVISED -
	PLLOT DATE = 2/9/2015		

STATE OF ILLINOIS
DEPARTMENT OF TRANSPORTATION

SUMMARY OF QUANTITIES

SCALE: N/A SHEET 1 OF 1 SHEETS STA. TO STA.

F.A. RTE.	SECTION	COUNTY	TOTAL SHEETS	SHEET NO.
	D7 PATCHING 2015-4	COLES	3	3
			CONTRACT NO. 74679	
ILLINOIS FED. AID PROJECT				