

STATE OF ILLINOIS
DEPARTMENT OF TRANSPORTATION
DIVISION OF HIGHWAYS

**PROPOSED
HIGHWAY PLANS**

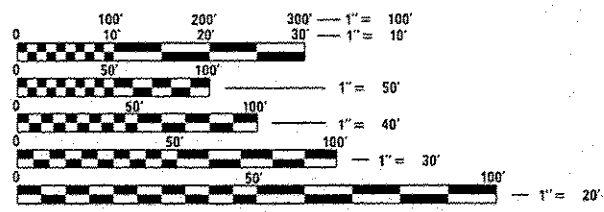
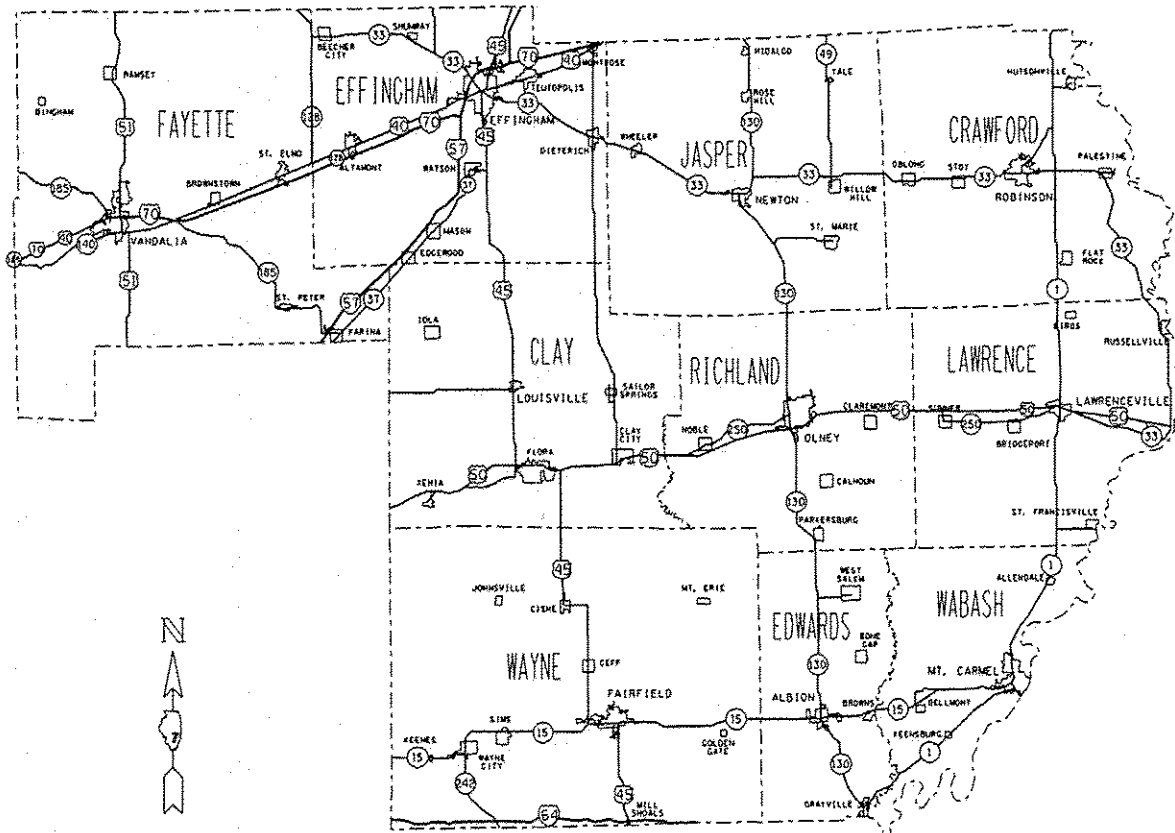
Various ROUTE
SECTION D7 ELECTRICAL REPAIRS 2016-2
VARIOUS COUNTIES

(Fayette, Effingham, Jasper, Crawford, Lawrence,
Richland, Clay, Wayne, Edwards and Wabash)
C-97-068-15

F.A. RTE.	SECTION	COUNTY	TOTAL SHEETS	SHEET NO.
	*	VARIOUS	3	1
		ILLINOIS	CONTRACT NO. 74720	

* D7 ELECTRICAL REPAIRS 2016-2

FOR INDEX OF SHEETS, SEE SHEET NO. 2



FULL SIZE PLANS HAVE BEEN PREPARED USING STANDARD ENGINEERING SCALES. REDUCED SIZED PLANS WILL NOT CONFORM TO STANDARD SCALES. IN MAKING MEASUREMENTS ON REDUCED PLANS, THE ABOVE SCALES MAY BE USED.

J.U.L.I.E.
JOINT UTILITY LOCATION INFORMATION FOR EXCAVATION
1-800-892-0123
OR 811

PROJECT ENGINEER ROB MACKLIN
PROJECT MANAGER LYNN McCLELLAN

GROSS LENGTH = x.xx FT. = x.xxx MILE
NET LENGTH = x.xx FT. = x.xxx MILE

CONTRACT NO. 74720

STATE OF ILLINOIS
DEPARTMENT OF TRANSPORTATION
DIVISION OF HIGHWAYS

SUBMITTED March 23 20 15
Roger L. Drishell
DEPUTY DIRECTOR OF HIGHWAYS, REGION ENGINEER

May 8 20 15
John D. Baranzelli P.E.
ENGINEER OF DESIGN AND ENVIRONMENT

May 8 20 15
Onor Osman P.E.
DIRECTOR OF HIGHWAYS, CHIEF ENGINEER

PRINTED BY THE AUTHORITY
OF THE STATE OF ILLINOIS

GENERAL NOTES

THIS PROJECT IS LOCATED ON VARIOUS ROUTES IN FAYETTE, EFFINGHAM, JASPER, CRAWFORD, CLAY, RICHLAND, LAWRENCE, WAYNE, EDWARDS AND WABASH ALL LOCATED WITHIN REGION 4-DISTRICT 7. THE WORK INCLUDED IN THIS SECTION CONSISTS OF MAINTAINING AND REPAIRING THE ELECTRICAL SYSTEMS AND ALL OTHER WORK NECESSARY TO COMPLETE THIS SECTION.

ALL WORK IS TO BE REPLACED IN KIND OR, AS INDICATED ON THE CONTRACT PLANS OR PROVISIONS.

THE LOCATIONS OF THE REPAIR AREAS SHALL BE DETERMINED BY THE ENGINEER.

REMOVAL OF DAMAGED MATERIALS WILL INCLUDE DISMANTLING, LOADING, HAULING AND DISPOSAL. THE WORK SITE WILL BE LEFT IN A SAFE AND ORDERLY CONDITION.

NO MATERIAL SHOULD BE LEFT ON OR NEAR THE ROADWAY DURING NON-WORKING HOURS.

ANY NECESSARY TRAFFIC CONTROL WILL BE PROVIDED BY THE CONTRACTOR; APPROPRIATE STANDARDS ARE LISTED ON THIS SHEET UNDER THE INDEX OF SHEETS.

ILLINOIS STATE LAW REQUIRES A 48-HOUR NOTICE TO BE GIVEN TO UTILITIES BEFORE DIGGING. FIELD MARKING OF FACILITIES MAY BE OBTAINED BY CONTACTING J.U.L.I.E. (PH. 800-892-0123) OR FOR NON-MEMBER, THE UTILITY COMPANY DIRECTLY. ILLINOIS DEPARTMENT OF TRANSPORTATION IS NOT A MEMBER OF THE JOINT UTILITY LOCATING INFORMATION FOR EXCAVATORS (J.U.L.I.E.) SYSTEM AND MUST BE CONTACTED DIRECTLY.

ENGLISH UNITS OF MEASUREMENT SHALL GOVERN OVER AND SUPERCEDE ANY METRIC UNITS IN THIS CONTRACT, WHERE INCLUDED, METRIC UNITS ARE FOR INFORMATION ONLY.

ELECTRONIC FILES AND/OR ELECTRONIC SURVEY INFORMATION INCLUDING CADD FILES WILL NOT BE AVAILABLE FOR THIS PROJECT TO THE CONTRACTOR.

ANY WORK ORDER MAY BE CANCELLED AT THE ENGINEER'S DISCRETION.

NO OVERNIGHT LANE CLOSURES WILL BE ALLOWED.

INDEX OF SHEETS

- 1 COVER SHEET
- 2 INDEX OF SHEETS & GENERAL NOTES
- 3 SUMMARY OF QUANTITIES

THE FOLLOWING STANDARDS ARE A PART OF THESE PLANS AND ARE INCLUDED AFTER SHEET NO. 3:

- 701001-02 OFF-ROAD OPERATIONS, 2L, 2W, MORE THAN 15' AWAY
- 701006-05 OFF-ROAD OPERATIONS, 2L, 2W, 15' TO 24" FROM PAVEMENT EDGE
- 701011-04 OFF-ROAD MOVING OPERATION, 2L, 2W, DAY ONLY
- 701101-04 OFF-ROAD OPERATIONS, MULTILANE, 15' TO 24" FROM PAVEMENT EDGE
- 701106-02 OFF-ROAD OPERATIONS, MULTILANE, MORE THAN 15' AWAY
- 701201-04 LANE CLOSURE, 2L, 2W, DAY ONLY, FOR SPEEDS \geq 45 MPH
- 701206-03 LANE CLOSURE, 2L, 2W, NIGHT ONLY FOR SPEEDS \geq 45 MPH
- 701301-04 LANE CLOSURE, 2L, 2W, SHORT TIME OPERATIONS
- 701400-08 APPROACH TO LANE CLOSURE, FREEWAY/EXPRESSWAY
- 701401-09 LANE CLOSURE, FREEWAY/EXPRESSWAY
- 701406-09 LANE CLOSURE, FREEWAY/EXPRESSWAY, DAY OPERATIONS ONLY
- 701411-09 LANE CLOSURE, MULTILANE, AT ENTRANCE OR EXIT RAMP, FOR SPEEDS \geq 45 MPH
- 701421-07 LANE CLOSURE, MULTILANE, DAY OPERATIONS ONLY, FOR SPEEDS \geq 45 MPH TO 55 MPH
- 701426-07 LANE CLOSURE, MULTILANE, INTERMITTENT OR MOVING OPER., FOR SPEEDS \geq 45 MPH
- 701427-03 LANE CLOSURE, MULTILANE, INTERMITTENT OR MOVING OPERATION, FOR SPEEDS \leq 40 MPH
- 701428 TRAFFIC SONTROL SETUP AND REMOVAL FREEWAY/EXPRESSWAY
- 701456-03 PARTIAL EXIT RAMP CLOSURE FREEWAY/EXPRESSWAY
- 701501-06 URBAN LANE CLOSURE, 2L, 2W UNDIVIDED
- 701502-06 URBAN LANE CLOSURE, 2L, 2W, WITH BIDIRECTIONAL LEFT TURN LANE
- 701601-09 URBAN LANE CLOSURE, MULTILANE, 1W OR 2W WITH NONTRAVERSABLE MEDIAN
- 701602-07 URBAN LANE CLOSURE, MULTILANE, 2W, WITH BIDIRECTIONAL LEFT TURN LANE
- 701606-10 URBAN LANE CLOSURE MULTILANE, 2W WITH MOUNTABLE MEDIAN
- 701611 URBAN HALF ROAD CLOSURE, MULTILANE, 2W WITH MOUNTABLE MEDIAN
- 701701-09 URBAN LANE CLOSURE, MULTILANE INTERSECTION
- 701801-05 SIDEWALK, CORNER OR CROSSWALK CLOSURE
- 701901-04 TRAFFIC CONTROL DEVICES
- 000001-06 STANDARD SYMBOLS, ABBREVIATIONS AND PATTERNS

FILE NAME: p:\11\804EBID\INTEG\illinois.gov\PI007\Documents\DOT Offices\District 7\Projects\74720\Drawings\CAD\Sheets\0774720-INT-GENNOTES	USER NAME: aeffannh	DESIGNED: -	REVISED: -	STATE OF ILLINOIS DEPARTMENT OF TRANSPORTATION	INDEX OF SHEETS & GENERAL NOTES	F.A. RTE.	SECTION	COUNTY	TOTAL SHEETS	SHEET NO.
PLOT SCALE: 1/8" = 1'-0"	CHECKED: -	REVISED: -	VARIOUS			3	2			
PLOT DATE: 3/23/2015	DATE: -	REVISED: -	CONTRACT NO. 74720							
						ILLINOIS FED. AID PROJECT				

