

STATE OF ILLINOIS
DEPARTMENT OF TRANSPORTATION
DIVISION OF HIGHWAYS
PROPOSED
HIGHWAY PLANS

F.A.P. RTE.	SECTION	COUNTY	TOTAL SHEETS	SHEET NO.
678	52-1	ST. CLAIR	12	1
		ILLINOIS	CONTRACT NO. 76H79	

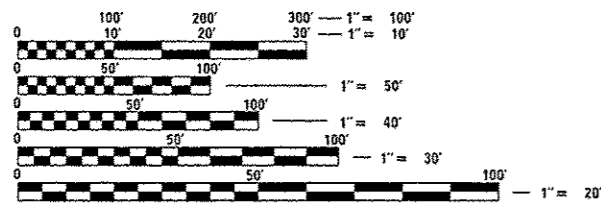
FOR INDEX OF SHEETS, SEE SHEET NO. 2

FAP ROUTE 678 (IL 4)
SECTION 52-1
PROJECT ACHSIP-0678 (006)
RESURFACING, NEW SHOULDERS
& RUMBLE STRIPS
ST. CLAIR COUNTY



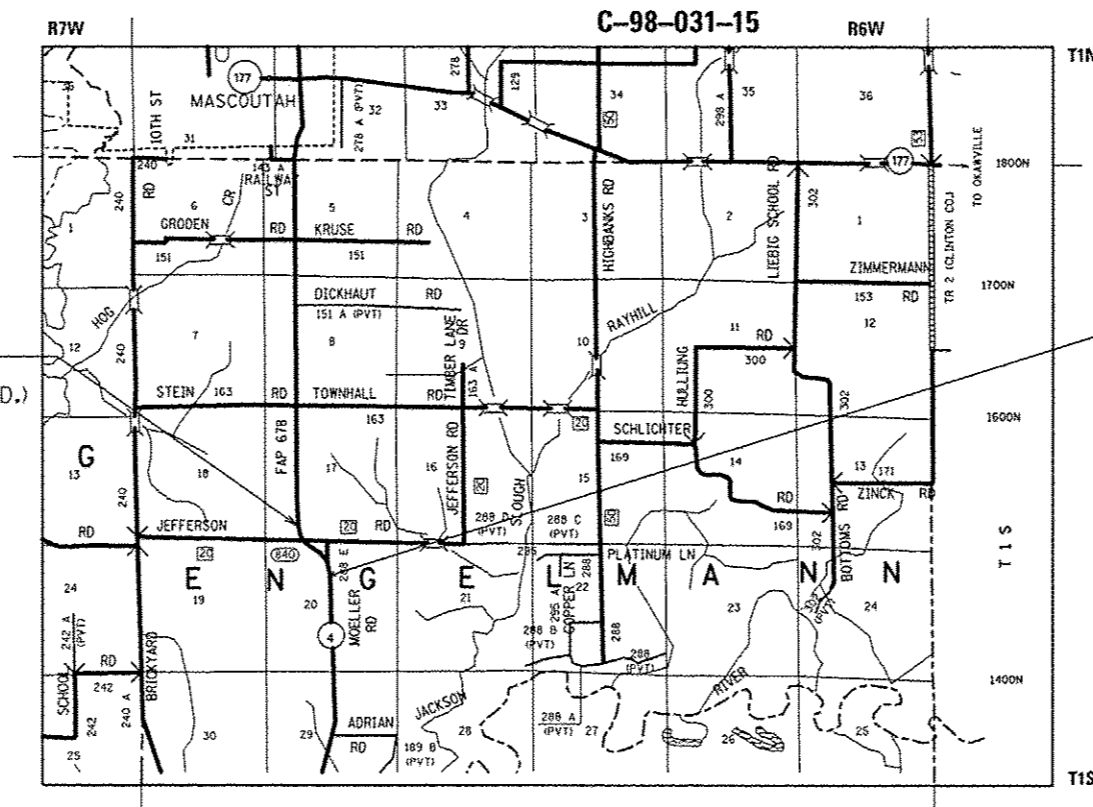
END PROJECT
 STA. 247+24.02
 (0.1 MI N OF JEFFERSON RD.)
 LATITUDE: 38.440276
 LONGITUDE: -89.794346

BEGIN PROJECT
 STA. 215+19.00
 (0.1 MI S OF MOELLER RD.)
 LATITUDE: 38.433929
 LONGITUDE: -89.789551



FULL SIZE PLANS HAVE BEEN PREPARED USING STANDARD ENGINEERING SCALES. REDUCED SIZED PLANS WILL NOT CONFORM TO STANDARD SCALES. IN MAKING MEASUREMENTS ON REDUCED PLANS, THE ABOVE SCALES MAY BE USED.

J.U.L.I.E.
 JOINT UTILITY LOCATION INFORMATION FOR EXCAVATION
 1-800-892-0123
 OR 811



NOT TO SCALE

LOCATION MAP
 ENGELMANN TOWNSHIP

GROSS LENGTH = 3205.02 FT. = 0.607 MILE
 NET LENGTH = 3205.02 FT. = 0.607 MILE



STATE OF ILLINOIS
 DEPARTMENT OF TRANSPORTATION
 DIVISION OF HIGHWAYS

SUBMITTED March 17, 2015

Jeffrey Z. K...
 DEPUTY DIRECTOR OF HIGHWAYS, REGION 5 ENGINEER

May 8, 2015
John D. Baranzelli, P.E.
 ENGINEER OF DESIGN AND ENVIRONMENT

May 8, 2015
Onur Osman, P.E.
 DIRECTOR OF HIGHWAYS, CHIEF ENGINEER

PROJECT ENGINEER: MICHAEL PRITCHETT (618) 346-3180
 DESIGNER: ALVIN NIEVES-ROSARIO (618) 346-3454

CONTRACT NO. 76H79

PRINTED BY THE AUTHORITY
OF THE STATE OF ILLINOIS

INDEX OF SHEETS

- 1 COVER SHEET
- 2 INDEX OF SHEETS, GENERAL NOTES, COMMITMENTS & HIGHWAY STANDARDS
- 3-4 SUMMARY OF QUANTITIES
- 5-7 TYPICAL SECTIONS
- 8 LOCATON MAP
- 9-10 SCHEDULES
- 11-12 DETAIL SHEET

COMMITMENTS

NONE

- 14. THE INTENT OF THIS CONTRACT IS TO CONSTRUCT A 3' HMA SHOULDER AND A VARIABLE WIDTH AGGREGATE WEDGE SHOULDER WITHIN THE EXISTING AVAILABLE TOP.
- 15. ALL SAW CUTTING REQUIRED FOR REMOVALS SHALL BE INCLUDED IN THE CONTRACT UNIT PRICE FOR THE REMOVAL ITEM.
- 16. EARTH EXCAVATION SHALL INCLUDE ALL MATERIALS ENCOUNTERED, INCLUDING, BUT NOT LIMITED TO, OIL AND CHIP SIDE ROADS AND HMA ENTRANCES.
- 17. HMA INCIDENTAL SURFACING IS INCLUDED TO PROVIDE A SMOOTH TRANSITION AT HMA ENTRANCES. CONTRACTOR SHALL VERIFY LOCATIONS WHERE THIS IS NECESSARY.

GENERAL NOTES

- 1. THE CONTRACTOR AND THE ENGINEER SHALL BE AWARE THAT NO FORMAL SURVEY WAS PERFORMED FOR THIS PROJECT. THE STATIONING AND TOPO SHOWN IN THE PLANS WAS CREATED USING MICROFILM AND FIELD MEASUREMENTS MADE BY DESIGN PERSONNEL. BOTH SHALL BE ASSUMED TO BE APPROXIMATE.
- 2. ILLINOIS STATE LAW REQUIRES A 48-HOUR NOTICE BE GIVEN TO ALL UTILITIES BEFORE DIGGING. FIELD MARKING OF FACILITIES MAY BE OBTAINED BY CONTACTING J.U.L.I.E. OR FOR NON-MEMBERS, THE UTILITY COMPANY DIRECTLY. AGENCIES KNOWN TO HAVE FACILITIES WITHIN THE PROJECT AREA ARE AS FOLLOWS:

- AMEREN ILLINDIS - GAS & ELECTRIC (AERIAL & BURIED)
- CLEARWAVE COMMUNICATIONS - COMMUNICATIONS (AERIAL & BURIED)
- CLINTON COUNTY ELECTRIC COOPERATIVE, INC. - ELECTRIC (AERIAL & BURIED)
- VILLAGE OF FAYETTEVILLE - WATER & SANITARY SEWER (BURIED)
- FRONTIER NORTH, INC. - COMMUNICATIONS (AERIAL & BURIED)
- FSH WATER COMMISSION - WATER (BURIED)

J.U.L.I.E. MEMBERS MUST BE NOTIFIED INDIVIDUALLY.

MEMBERS OF J.U.L.I.E. CALL TOLL FREE (800) 892-0123 OR 811 AND ARE INDICATED BY *. NON-J.U.L.I.E. MEMBERS MUST BE NOTIFIED INDIVIDUALLY.

- 3. THE CONTRACTOR SHALL VERIFY ALL DIMENSIONS AND CONDITIONS IN THE FIELD PRIOR TO ORDERING OF MATERIALS AND CONSTRUCTION.
- 4. NO OVERNIGHT LANE CLOSURES WILL BE ALLOWED.
- 5. THE THICKNESS OF THE BITUMINOUS MIXTURE SHOWN ON THE PLANS IS THE NOMINAL THICKNESS. DEVIATIONS FROM THE NOMINAL THICKNESS WILL BE PERMITTED WHEN SUCH DEVIATIONS OCCUR DUE TO IRREGULARITIES IN THE EXISTING SURFACE OR BASE ON WHICH THE BITUMINOUS MIXTURE IS PLACED.
- 6. ALL AREAS DISTURBED FOR ANY REASON SHALL BE SEEDED AS DIRECTED BY THE ENGINEER. ALL AREAS DISTURBED BY THE CONTRACTOR OUTSIDE THE PROPOSED CONSTRUCTION LIMITS SHALL BE SEEDED AT THE CONTRACTOR'S EXPENSE.
- 7. THE INTENT OF GRADING AND SHAPING DITCHES IS TO ESTABLISH POSITIVE DRAINAGE BETWEEN THE EDGE OF THE STABILIZED SHOULDER AND THE FLOWLINE OF THE DITCH. AN ESTIMATED 350 CUBIC YARDS OF EXCESS SOIL ARE ANTICIPATED.
- 8. FLAGGERS SHALL BE PRESENT DURING ALL CLOSURE HOURS, INCLUDING LUNCH HOUR, AND NO ADDITIONAL COMPENSATION SHALL BE PAID.
- 9. THE PAVEMENT MARKING SHOWN IN THE SCHEDULES IS APPROXIMATE. THE LOCATION OF THE PROPOSED MARKINGS SHALL MATCH EXISTING LOCATIONS.
- 10. ALL TEMPORARY PAVEMENT MARKINGS SHALL BE PLACED IN SUCH A MANNER SO AS NOT TO INTERFERE WITH THE PLACEMENT OF PERMANENT PAVEMENT MARKINGS.
- 11. SHORT TERM AND TEMPORARY PAVEMENT MARKING REMOVAL FROM FINAL SURFACE SHALL BE PAID FOR AS WORK ZONE PAVEMENT MARKING REMOVAL.
- 12. THE DEPARTMENT STRONGLY ENCOURAGES THE PRIME CONTRACTOR AND THEIR APPROVED SUB-CONTRACTORS TO HIRE MINORITY, WOMEN AND DISADVANTAGED INDIVIDUALS FROM ITS FEDERALLY FUNDED HIGHWAY CONSTRUCTION CAREERS TRAINING PROGRAM (HCCTP) TO HELP MEET WORKFORCE AND TRAINEE GOALS. THIS PROGRAM IS TRAINING MINORITIES, WOMEN AND DISADVANTAGED INDIVIDUALS IN HIGHWAY CONSTRUCTION-RELATED SKILLS, E.G., MATH FOR THE TRADES, JOB READINESS, TECHNICAL SKILLS COURSEWORK (CARPENTRY, CONCRETE FLATWORK, BLUEPRINT READING, SITE PLANS, SITE WORK, TOOLS USE, ETC.) AND OSHA 10 HOUR CERTIFICATION TO PREPARE THEM FOR A CAREER IN THE HIGHWAY CONSTRUCTION TRADES. GRADUATES ARE WELL-TRAINED AND READY TO BECOME PRODUCTIVE ENTRY-LEVEL CONSTRUCTION WORKERS. CONTACT THE DISTRICT 8 EEO OFFICE AT 618-346-3360 AND/OR THE HCCTP COORDINATOR AT 618-874-6528 TO LEARN MORE ABOUT THE PROGRAM AND FOR ASSISTANCE IN MEETING WORKFORCE AND TRAINEE GOALS.
- 13. ALL EARTHWORK REQUIRED TO COMPLY WITH HIGHWAY STANDARD 630301-06 SHALL BE INCLUDED IN THE COST OF TRAFFIC BARRIER TERMINAL, TYPE I (SPECIAL), TANGENT.

MIXTURE REQUIREMENTS

ROUTE	FAP 678 (IL 4)
SECTION	52-1
COUNTY	ST. CLAIR
CONTRACT	76H79

DESCRIPTION:	RESURFACING, SHOULDERS, RUMBLE STRIP PLACEMENT ON CENTERLINE & SHOULDERS
--------------	--

ADT (CONSTRUCTION YR.)	IL 4 3000
MU%:	6
SU%:	3
20 YR. ESAL:	1.07

MIXTURE USE	SURFACING	INCIDENTAL
AC/PG	PG-64-22	PG 64-22
RAP % (MAX)	SEE SPECIAL PROVISION	SEE SPECIAL PROVISION
DESIGN AIR VOIDS	4.0% @ Ndes=70	4.0% @ Ndes=70
MIX COMPOSITION (GRADATION)	IL 9.5	IL 9.5
FRICTION AGG	MIXTURE "D"	MIXTURE "D"
QUALITY MGMT PROGRAM	QC/QA	QC/QA

MIXTURE USE	SHOULDERS ≥ 2.25"
AC/PG	PG-64-22
RAP % (MAX)	SEE SPECIAL PROVISION
DESIGN AIR VOIDS	4.0% @ Ndes=30
MIX COMPOSITION (GRADATION)	IL 19.0L
FRICTION AGG	
QUALITY MGMT PROGRAM	

PLAN QUANTITIES FOR BITUMINOUS CONCRETE SURFACE COURSE ITEMS ARE CALCULATED USING A UNIT WEIGHT OF 112 LB/SQ YD/IN (59.8 KG/SQ M/25MM THICKNESS).

HIGHWAY STANDARDS

000001-06	STANDARD SYMBOLS, ABBREVIATIONS AND PATTERNS
001006	DECIMAL OF AN INCH AND OF A FOOT
482001-02	HMA SHOULDER ADJACENT TO FLEXIBLE PAVEMENT
630001-10	STEEL PLATE BEAM GUARDRAIL
630106-01	LONG-SPAN GUARDRAIL OVER CULVERT
630301-06	SHOULDER WIDENING FOR TYPE 1 (SPECIAL) GUARDRAIL TERMINALS
635006-03	REFLECTOR AND TERMINAL MARKER PLACEMENT
635011-02	REFLECTOR MARKER AND MOUNTING DETAILS
642006	SHOULDER RUMBLE STRIPS, 8 IN.
701001-02	OFF ROAD OPERATIONS, 2L, 2W, MORE THAN 15' (4.5m) AWAY
701006-05	OFF ROAD OPERATIONS, 2L, 2W, 15' TO 24" FROM PAVEMENT EDGE
701011-04	OFF ROAD MOVING OPERATIONS, 2L, 2W, DAY ONLY
701201-04	LANE CLOSURE, 2L, 2W, DAY ONLY, FOR SPEEDS ≥ 45 MPH
701301-04	LANE CLOSURE, 2L, 2W, SHORT TIME OPERATIONS
701306-03	LANE CLOSURE, 2L, 2W, SLOW MOVING OPERATIONS DAY ONLY, FOR SPEEDS ≥ 45 MPH
701311-03	LANE CLOSURE, 2L, 2W, MOVING OPERATIONS - DAY ONLY
701326-04	LANE CLOSURE, 2L, 2W, PAVEMENT WIDENING, FOR SPEEDS ≥ 45 MPH
701901-04	TRAFFIC CONTROL DEVICES
780001-05	TYPICAL PAVEMENT MARKINGS
781001-03	TYPICAL APPLICATIONS RAISED REFLECTIVE PAVEMENT MARKERS

FILE NAME =	USER NAME = n10vaaa	DESIGNED -	REVISED -	STATE OF ILLINOIS DEPARTMENT OF TRANSPORTATION	GENERAL NOTES, INDEX OF SHEETS & HIGHWAY STANDARDS	F.A.P. RTE.	SECTION	COUNTY	TOTAL SHEETS	SHEET NO.	
c:\pwwork\p1\dot\110vaaa\d0410617\0878476-plan.dgn	76-plan.dgn	DRAWN -	REVISED -			678	52-1	ST. CLAIR	12	2	
PLOT SCALE = 100:8000 / in		CHECKED -	REVISED -			CONTRACT NO. 76H79					
PLOT DATE = 3/18/2015		DATE -	REVISED -			SCALE: NTS	SHEET NO. OF SHEETS	STA. TO STA.	FED. ROAD DIST. NO.	ILLINOIS FED. AID PROJECT	

90% FED / 10% STATE

CONSTR. CODE

CODE NO.	ITEM	UNIT	TOTAL QUANTITY	90% FED / 10% STATE	
				ROADWAY 0005 RURAL	CONSTR. CODE
20200100	EARTH EXCAVATION	CU YD	280	280	
21400100	GRADING AND SHAPING DITCHES	FOOT	2344	2344	
25000200	SEEDING, CLASS 2	ACRE	0.9	0.9	
25000400	NITROGEN FERTILIZER NUTRIENT	POUND	50	50	
25000500	PHOSPHORUS FERTILIZER NUTRIENT	POUND	50	50	
25000600	POTASSIUM FERTILIZER NUTRIENT	POUND	50	50	
25100630	EROSION CONTROL BLANKET	SQ YD	2448	2448	
31101000	SUBBASE GRANULAR MATERIAL, TYPE B	TON	92	92	
40600275	BITUMINOUS MATERIALS (PRIME COAT)	POUND	3545	3545	
40600982	HOT-MIX ASPHALT SURFACE REMOVAL - BUTT JOINT	SQ YD	57	57	
40600990	TEMPORARY RAMP	SQ YD	24.4	24.4	
40603340	HOT-MIX ASPHALT SURFACE COURSE, MIX "D", N70	TON	665	665	
40800025	BITUMINOUS MATERIALS (PRIME COAT)	POUND	27	27	
40800050	INCIDENTAL HOT-MIX ASPHALT SURFACING	TON	4	4	

90% FED / 10% STATE

CONSTR. CODE

CODE NO.	ITEM	UNIT	TOTAL QUANTITY	90% FED / 10% STATE	
				ROADWAY 0005 RURAL	CONSTR. CODE
44000100	PAVEMENT REMOVAL	SQ YD	31	31	
44000155	HOT-MIX ASPHALT SURFACE REMOVAL, 1 1/2"	SQ YD	7875	7875	
44004250	PAVED SHOULDER REMOVAL	SQ YD	576	576	
48102100	AGGREGATE WEDGE SHOULDER, TYPE B	TON	90	90	
48203029	HOT-MIX ASPHALT SHOULDERS, 8"	SQ YD	1733	1733	
* 63000001	STEEL PLATE BEAM GUARDRAIL, TYPE A, 6 FOOT POSTS	FOOT	162.5	162.5	
* 63000350	LONG-SPAN GUARDRAIL OVER CULVERT, 12 FT 6 IN SPAN	FOOT	325.0	325.0	
* 63100167	TRAFFIC BARRIER TERMINAL, TYPE 1 (SPECIAL) TANGENT	EACH	4	4	
64200108	SHOULDER RUMBLE STRIPS, 8 INCH	FOOT	5155	5155	
67000400	ENGINEER'S FIELD OFFICE, TYPE A	CAL MO	3	3	
67100100	MOBILIZATION	L SUM	1	1	
70100450	TRAFFIC CONTROL AND PROTECTION, STANDARD 701201	L SUM	1	1	
70100460	TRAFFIC CONTROL AND PROTECTION, STANDARD 701306	L SUM	1	1	
70100500	TRAFFIC CONTROL AND PROTECTION, STANDARD 701326	L SUM	1	1	

* SPECIALTY ITEM

FILE NAME =	USER NAME = mveasa	DESIGNED -	REVISED -	STATE OF ILLINOIS DEPARTMENT OF TRANSPORTATION	SUMMARY OF QUANTITIES				F.A.P. RTE.	SECTION	COUNTY	TOTAL SHEETS	SHEET NO.
c:\pwwork\pwwork\mveasa\d8418617\d876-76-plan.dgn	PL01 SCALE = 100,0000 1/16"	DRAWN -	REVISED -						678	52-1	ST. CLAIR	12	3
PL01 DATE = 3/18/2015	DATE -	CHECKED -	REVISED -		SCALE: NTS SHEET NO. OF SHEETS STA. TO STA.				FED. ROAD DIST. NO. ILLINOIS FED. AID PROJECT				
		DATE -	REVISED -						CONTRACT NO. 78H79				

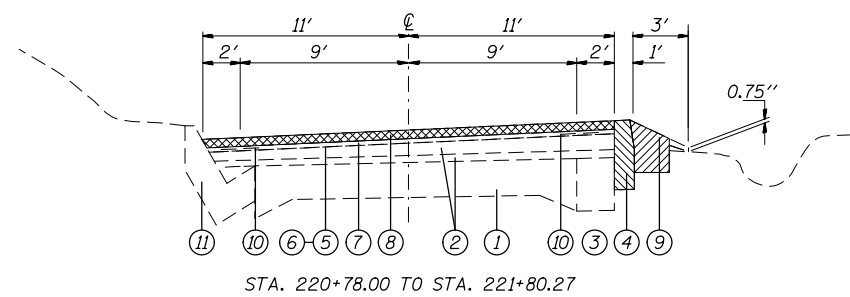
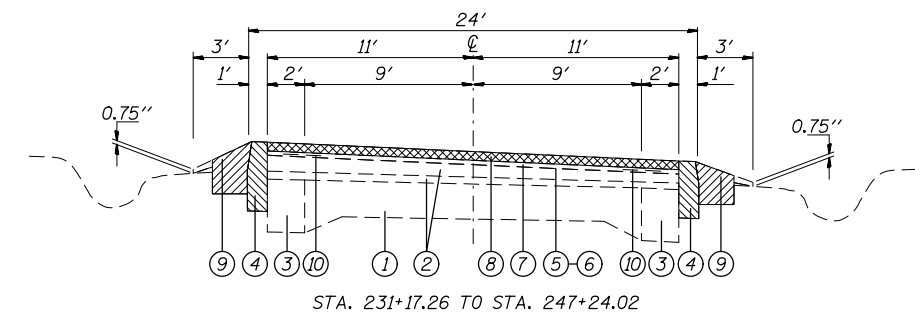
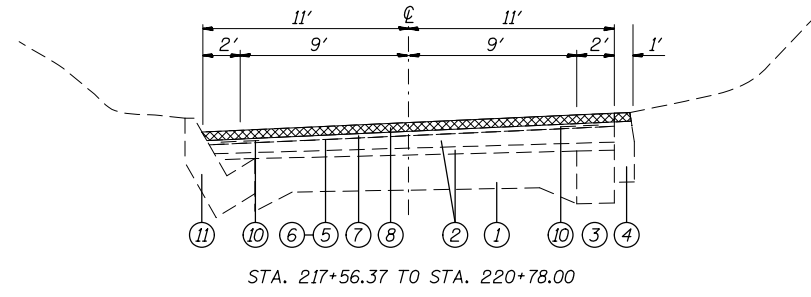
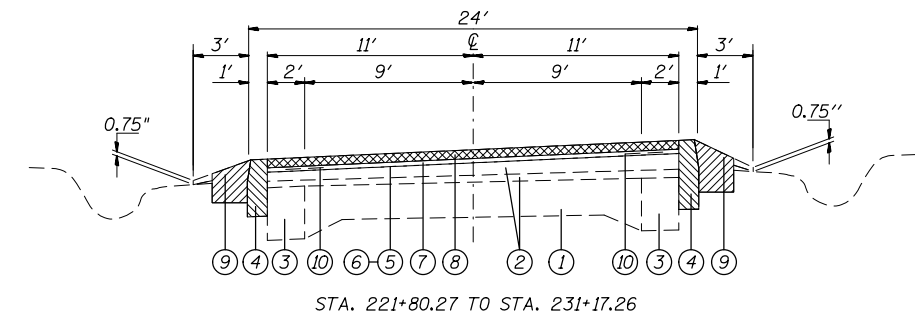
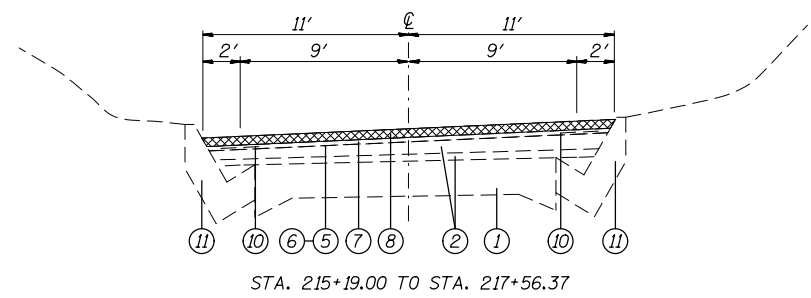
90% FED / 10% STATE

CODE NO.	ITEM	UNIT	TOTAL QUANTITY	CONSTR. CODE	
				ROADWAY	RURAL
70103815	TRAFFIC CONTROL SURVEILLANCE	CAL DA	5	5	
70300100	SHORT TERM PAVEMENT MARKING	FOOT	583	583	
70300220	TEMPORARY PAVEMENT MARKING - LINE 4"	FOOT	12146	12146	
70301000	WORK ZONE PAVEMENT MARKING REMOVAL	SO FT	4147	4147	
* 78000200	THERMOPLASTIC PAVEMENT MARKING - LINE 4"	FOOT	6412	6412	
* 78001110	PAINT PAVEMENT MARKING - LINE 4"	FOOT	5734	5734	
* 78100100	RAISED REFLECTIVE PAVEMENT MARKER	EACH	81	81	
* 78200410	GUARDRAIL MARKERS, TYPE A	EACH	12	12	
* 78201000	TERMINAL MARKER - DIRECT APPLIED	EACH	4	4	
78300200	RAISED REFLECTIVE PAVEMENT MARKER REMOVAL	EACH	81	81	
X0326898	CENTER LINE - RUMBLE STRIP - 16"	FOOT	3208	3208	

//




* SPECIALTY ITEM

FILE NAME =	USER NAME = njavasa	DESIGNED -	REVISED -	STATE OF ILLINOIS DEPARTMENT OF TRANSPORTATION	SUMMARY OF QUANTITIES				F.A.P. RTEL	SECTION	COUNTY	TOTAL SHEETS	SHEET NO.
cr:\pwork\p\dot\nj\avasa\d0418517\d075r	76-plan.dgn	DRAWN -	REVISED -						678	52-1	ST. CLAIR	12	4
		CHECKED -	REVISED -		SCALE: NTS				SHEET NO. OF SHEETS STA. TO STA.		FED. ROAD DIST. NO. ILLINOIS FED. AID PROJECT		
		DATE -	REVISED -		CONTRACT NO. 76H79								



LEGEND

- ① EXISTING 9-6-9 PCC PAVEMENT
- ② EXISTING BITUMINOUS RESURFACING, 3"
- ③ EXISTING P.C.C BASE COURSE WIDENING
- ④ EXISTING BITUMINOUS SHOULDER, 11"
- ⑤ EXISTING BITUMINOUS MATERIALS (PRIME COAT)
- ⑥ EXISTING AGGREGATE (PRIME COAT)
- ⑦ EXISTING LEVELING BINDER (MACHINE METHOD) TYPE 2, 3/4"
- ⑧ EXISTING BITUMINOUS CONCRETE SURFACE COURSE, 1 1/2"
- ⑨ EXISTING AGGREGATE SHOULDER
- ⑩ EXISTING STRIP REFLECTIVE CRACK CONTROL TREATMENT
- ⑪ EXISTING CONCRETE GUTTER
- ⑫ PROPOSED HMA SURFACE COURSE, 1 1/2"
- ⑬ PROPOSED HMA SHOULDER, 8"
- ⑭ PROPOSED AGGREGATE WEDGE SHOULDER, TYPE B
- ⑮ PROPOSED SUBBASE GRANULAR MATERIAL, TYPE B
- ⑯ PROPOSED BITUMINOUS MATERIALS (PRIME COAT)
- ⑰ PROPOSED GUARDRAIL

-  PAVED SHOULDER REMOVAL
-  EARTH EXCAVATION
-  HMA SURFACE REMOVAL, 1 1/2"

NOT TO SCALE

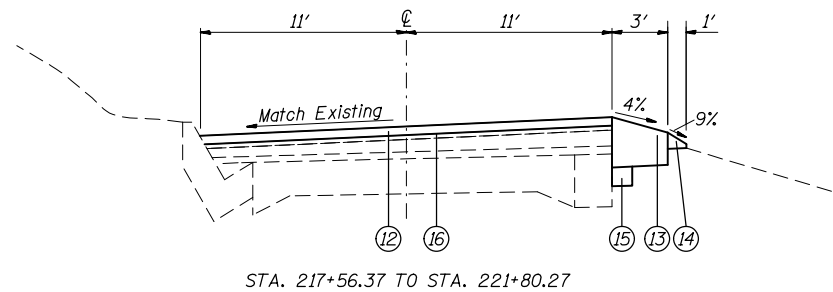
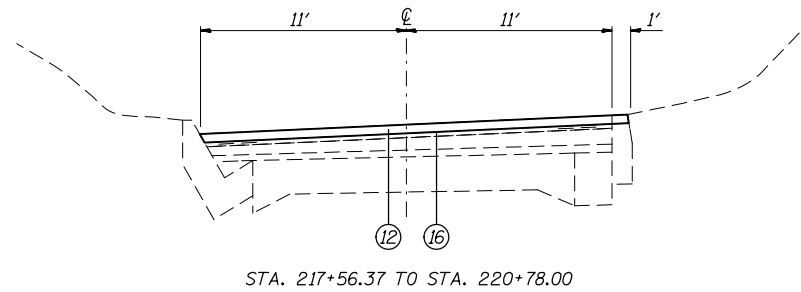
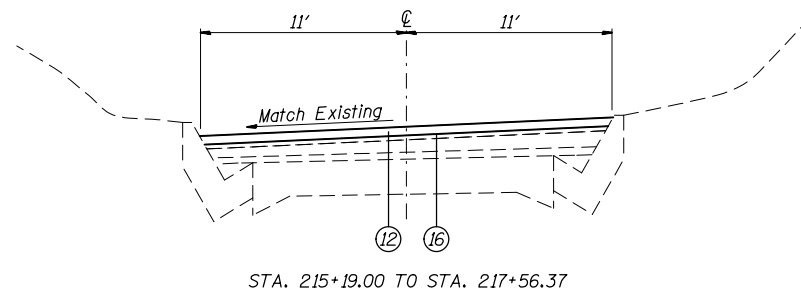
FILE NAME =	USER NAME = nivesa	DESIGNED -	REVISED -
et:\pw\work\pmdot\nivesa\d0418617\d876176-plan.dgn		DRAWN -	REVISED -
	PLOT SCALE = 100.0000' / 1in.	CHECKED -	REVISED -
	PLOT DATE = 3/18/2015	DATE -	REVISED -

STATE OF ILLINOIS
DEPARTMENT OF TRANSPORTATION

EXISTING TYPICAL SECTIONS

SCALE: NTS	SHEET NO.	OF SHEETS	STA.	TO STA.
------------	-----------	-----------	------	---------

F.A.P. RTE.	SECTION	COUNTY	TOTAL SHEETS	SHEET NO.
678	52-1	ST. CLAIR	12	5
CONTRACT NO. 76H79				
FED. ROAD DIST. NO. ILLINOIS FED. AID PROJECT				



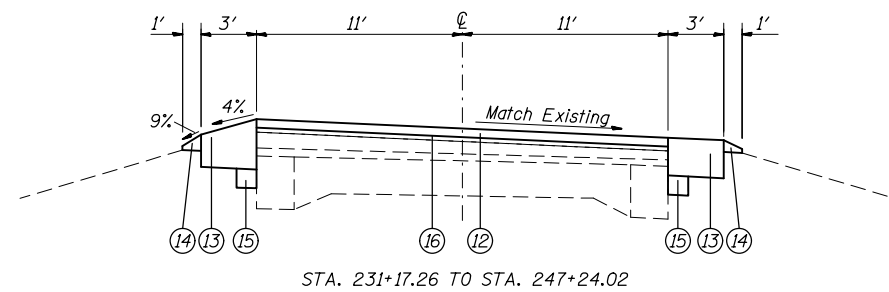
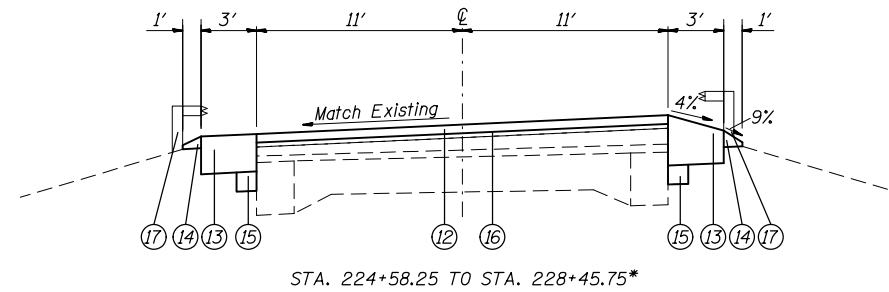
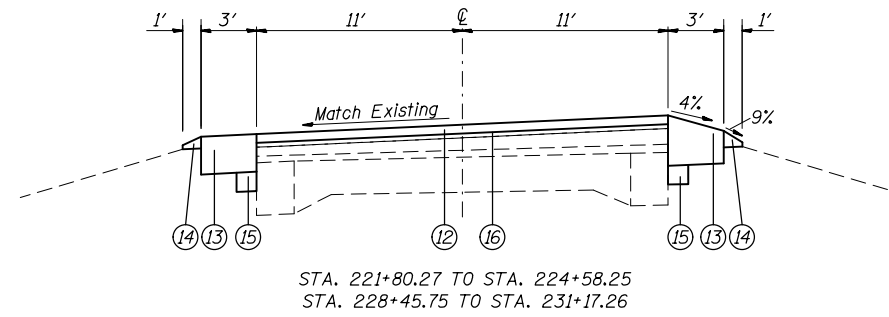
LEGEND

- ① EXISTING 9-6-9 PCC PAVEMENT
- ② EXISTING BITUMINOUS RESURFACING, 3"
- ③ EXISTING P.C.C BASE COURSE WIDENING
- ④ EXISTING BITUMINOUS SHOULDER, 11"
- ⑤ EXISTING BITUMINOUS MATERIALS (PRIME COAT)
- ⑥ EXISTING AGGREGATE (PRIME COAT)
- ⑦ EXISTING LEVELING BINDER (MACHINE METHOD) TYPE 2, 3/4"
- ⑧ EXISTING BITUMINOUS CONCRETE SURFACE COURSE, 1 1/2"
- ⑨ EXISTING AGGREGATE SHOULDER
- ⑩ EXISTING STRIP REFLECTIVE CRACK CONTROL TREATMENT
- ⑪ EXISTING CONCRETE GUTTER
- ⑫ PROPOSED HMA SURFACE COURSE, 1 1/2"
- ⑬ PROPOSED HMA SHOULDER, 8"
- ⑭ PROPOSED AGGREGATE WEDGE SHOULDER, TYPE B
- ⑮ PROPOSED SUBBASE GRANULAR MATERIAL, TYPE B
- ⑯ PROPOSED BITUMINOUS MATERIALS (PRIME COAT)
- ⑰ PROPOSED GUARDRAIL

*FROM STA 226+27 TO STA 226+77 NO AGGREGATE WEDGE SHOULDER, TYPE B SHOULD BE PLACED.

NOT TO SCALE

FILE NAME =	USER NAME = nievesa	DESIGNED -	REVISED -	STATE OF ILLINOIS DEPARTMENT OF TRANSPORTATION	PROPOSED TYPICAL SECTIONS				F.A.P. RTE.	SECTION	COUNTY	TOTAL SHEETS	SHEET NO.
et:\pw\work\p\dot\nievesa\d0418617\d876176-plan.dgn		DRAWN -	REVISED -		678	52-I	ST. CLAIR	12	6				
PLOT SCALE = 100.0000' / 1in.		CHECKED -	REVISED -		SCALE: NTS SHEET NO. OF SHEETS STA. TO STA.				CONTRACT NO. 76H79				
PLOT DATE = 3/18/2015		DATE -	REVISED -		FED. ROAD DIST. NO. ILLINOIS FED. AID PROJECT								



NOT TO SCALE

LEGEND

- ① EXISTING 9-6-9 PCC PAVEMENT
- ② EXISTING BITUMINOUS RESURFACING, 3"
- ③ EXISTING P.C.C BASE COURSE WIDENING
- ④ EXISTING BITUMINOUS SHOULDER, 11"
- ⑤ EXISTING BITUMINOUS MATERIALS (PRIME COAT)
- ⑥ EXISTING AGGREGATE (PRIME COAT)
- ⑦ EXISTING LEVELING BINDER (MACHINE METHOD) TYPE 2, 3/4"
- ⑧ EXISTING BITUMINOUS CONCRETE SURFACE COURSE, 1 1/2"
- ⑨ EXISTING AGGREGATE SHOULDER
- ⑩ EXISTING STRIP REFLECTIVE CRACK CONTROL TREATMENT
- ⑪ EXISTING CONCRETE GUTTER
- ⑫ PROPOSED HMA SURFACE COURSE, 1 1/2"
- ⑬ PROPOSED HMA SHOULDER, 8"
- ⑭ PROPOSED AGGREGATE WEDGE SHOULDER, TYPE B
- ⑮ PROPOSED SUBBASE GRANULAR MATERIAL, TYPE B
- ⑯ PROPOSED BITUMINOUS MATERIALS (PRIME COAT)
- ⑰ PROPOSED GUARDRAIL

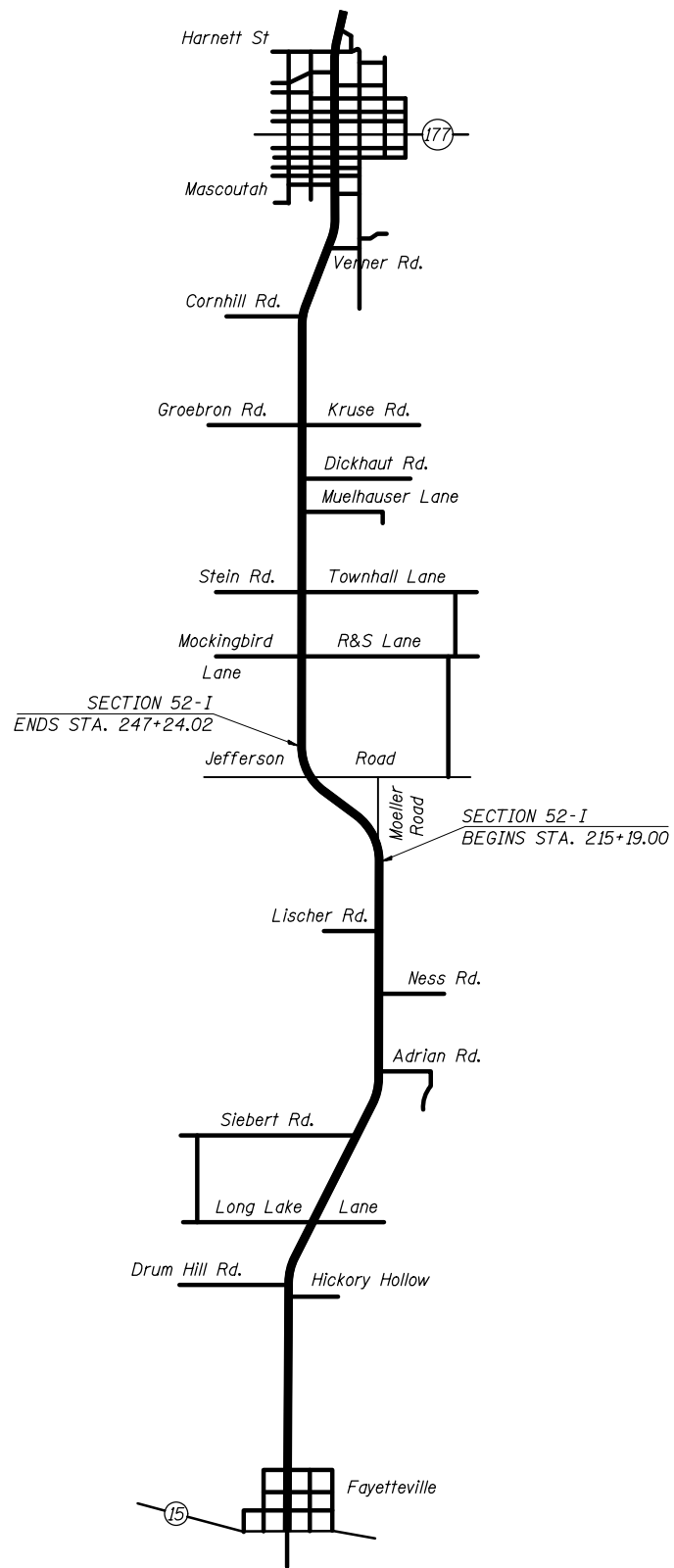
FILE NAME =	USER NAME = nievesa	DESIGNED -	REVISED -
et:\pw\work\p\dot\nievesa\d0418617\d876176-plan.dgn		DRAWN -	REVISED -
	PLOT SCALE = 100.0000' / 1in.	CHECKED -	REVISED -
	PLOT DATE = 3/18/2015	DATE -	REVISED -

STATE OF ILLINOIS
DEPARTMENT OF TRANSPORTATION

PROPOSED TYPICAL SECTIONS

SCALE: NTS SHEET NO. OF SHEETS STA. TO STA.

F.A.P. RTE.	SECTION	COUNTY	TOTAL SHEETS	SHEET NO.
678	52-1	ST. CLAIR	12	7
CONTRACT NO. 76H79				
FED. ROAD DIST. NO. ILLINOIS FED. AID PROJECT				



LOCATION MAP

NOT TO SCALE

FILE NAME =	USER NAME = nievesa	DESIGNED -	REVISED -	STATE OF ILLINOIS DEPARTMENT OF TRANSPORTATION	LOCATION MAP			F.A.P. RTE.	SECTION	COUNTY	TOTAL SHEETS	SHEET NO.
et:\pwork\pwork\nievesa\0418617\d876176-plan.dgn		DRAWN -	REVISED -		678	52-I	ST. CLAIR	12	8			
	PLOT SCALE = 100.0000' / in.	CHECKED -	REVISED -		CONTRACT NO. 76H79							
	PLOT DATE = 3/18/2015	DATE -	REVISED -		SCALE: NTS	SHEET NO.	OF SHEETS	STA.	TO STA.	FED. ROAD DIST. NO.	ILLINOIS FED. AID PROJECT	

PAVEMENT MARKING SCHEDULE											
STA	TO	STA	NO PASSING DIRECTION NB/SB	PAINT LINE 4"		THERMOPLASTIC LINE, 4"	RAISED REFLECTIVE PAVEMENT MARKERS*	RAISED REFLECTIVE PAVEMENT MARKERS REMOVAL	TEMPORARY PAVEMENT MARKING LINE - 4"	SHORT TERM PAVEMENT MARKING	WORK ZONE PAVEMENT MARKING REMOVAL
				YELLOW		WHITE					
				SOLID	SKIP DASH	SOLID	AMBER	FOOT	FOOT	FOOT	EACH
215+19.00	TO	238+16.57	BOTH	4596		4596	58	58	9192	418	3134
238+16.57	TO	247+24.02	SB	908	230	1816	23	23	2954	165	1013
SUB TOTAL:				5504	230	6412	81	81	12146	583	4147
TOTAL:				5734		6412	81	81	12146	583	4147

*RRPM'S SHALL BE SPACED @ 40' CENTERS TO MATCH EXISTING.

RESURFACING SCHEDULE													
STA.	TO	STA.	HMA SURFACE COURSE, MIX D, N70, 1 1/2"	BITUMINOUS MATERIAL (PRIME COAT)	HMA SURFACE REMOVAL 1 1/2"	HMA SHOULDERS, 8"	PAVEMENT REMOVAL*	SUBBASE GRANULAR MATERIAL, TYPE B	PAVED SHOULDER REMOVAL	AGGREGATE WEDGE SHOULDER, TYPE B	EARTH EXCAVATION	SHOULDER RUMBLE STRIPS, 8"	CENTERLINE RUMBLE STRIPS, 16"
			TON	POUND	SQ YD	SQ YD	SQ YD	TON	SQ YD	TON	CU YD	FOOT	FOOT
215+19.00	TO	220+78.00	118	631	1403								559
220+78.00	TO	221+80.27	21	113	250	35		2	12	2	10	103	103
221+80.27	TO	226+27.00	92	492	1093	298		16	100	16	50	894	447
226+27.00	TO	226+77.00	11	55	123	34		2	12		10	100	50
226+77.00	TO	231+17.26	91	485	1077	294		16	98	16	50	882	441
231+17.26	TO	238+06.47	142	759	1685	460	9	24	154	24	70	1380	690
238+06.47	TO	238+26.47	5	22	49	13	13						20
238+26.47	TO	247+24.02	185	988	2195	599	9	32	200	32	90	1796	898
TOTAL:			665	3545	7875	1733	31	92	576	90	280	5155	3208

NOTE: FROM STA 220+78.00 TO STA. 221+80.27 ALL WORK RELATED TO THE SHOULDERS SHALL ONLY BE PERFORMED ON THE RIGHT SIDE.

* PAVEMENT REMOVAL AT JEFFERSON RD FROM STA 237+81.47 TO STA 238+51.47. SEE DETAIL.

FILE NAME =	USER NAME = ntevesa	DESIGNED -	REVISED -	STATE OF ILLINOIS DEPARTMENT OF TRANSPORTATION	SCHEDULES				F.A.P. RTE.	SECTION	COUNTY	TOTAL SHEETS	SHEET NO.
et:\pw\work\p\dot\ntevesa\d0418617\d876176-plan.dgn	DRAWN -	REVISED -	678						52-I	ST. CLAIR	12	9	
PLOT SCALE = 100.0000' / 1in.	CHECKED -	REVISED -	SCALE: NTS				SHEET NO.	OF SHEETS	STA.	TO STA.	CONTRACT NO. 76H79		
PLOT DATE = 3/18/2015	DATE -	REVISED -	FED. ROAD DIST. NO.				ILLINOIS FED. AID PROJECT						

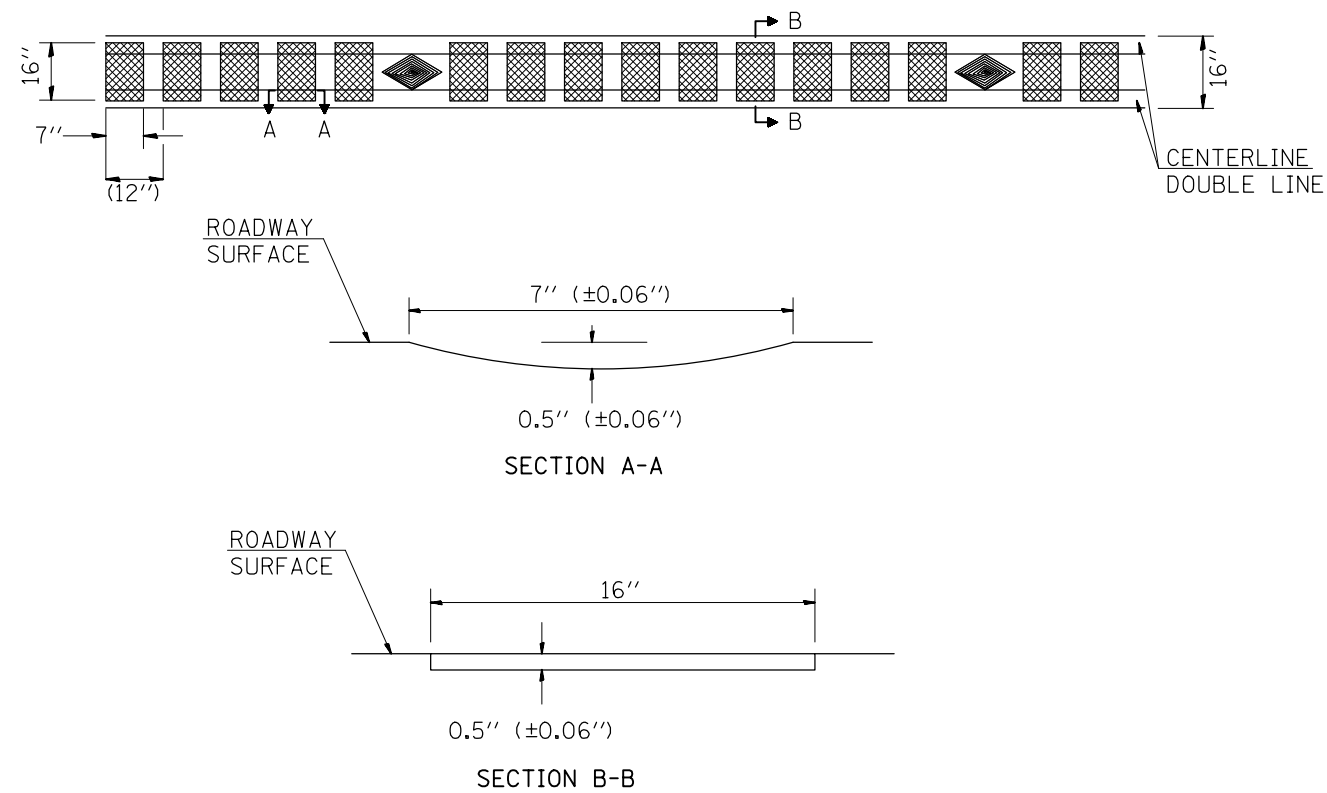
GRADING & EROSION CONTROL SCHEDULE									
STA	TO	STA	L/R	GRADING & SHAPING DITCHES	EROSION CONTROL BLANKET	SEEDING, CLASS 2	NITROGEN FERTILIZER NUTRIENT	PHOSPHORUS FERTILIZER NUTRIENT	POTASSIUM FERTILIZER NUTRIENT
				FOOT	SQ YD	ACRE	POUND	POUND	POUND
221+80	TO	222+85	R	105	130	0.1	3	3	3
222+85	TO	230+17	R	732	991	0.2	19	19	19
230+17	TO	231+17	BOTH	200	217	0.1	5	5	5
231+17	TO	233+02	R	185	128	0.1	3	3	3
233+02	TO	235+37	BOTH	470	456	0.1	9	9	9
235+37	TO	238+17	R	280	269	0.1	6	6	6
238+17	TO	239+82	BOTH	330	214	0.1	4	4	4
239+82	TO	240+24	L	42	43	0.1	1	1	1
TOTAL:				2344	2448	0.9	50	50	50

HMA ENTRANCE SCHEDULE						
STATION	RT/LT	LENGTH	WIDTH	HMA SURFACE REMOVAL - BUTT JOINT	BITUMINOUS MATERIAL (PRIME COAT)	INCIDENTAL HMA SURFACING
		FT	FT	SQ YD	POUND	TON
231+82.61	RT	7.5	14.5	13	6	1
241+86.22	LT	7.5	19	16	8	1
244+50.33	LT	7.5	21	18	8	1
245+55.97	LT	7.5	11.5	10	5	1
TOTAL				57	27	4

GUARDRAIL SCHEDULE									
STA	TO	STA	L/R	LENGTH	SPBGR, TYPE A	LONG-SPAN GUARDRAIL OVER CULVERT, 12FT 6IN SPAN	TRAFFIC BARRIER TERMINAL, TYPE 1 (SPECIAL) TANGENT	TERMINAL MARKERS, DIRECT APPLIED	GUARDRAIL MARKERS, TYPE A
				FOOT	FOOT	FOOT	EACH	EACH	EACH
224+58.25	TO	225+70.75	R	112.5	62.5		1	1	2
225+70.75	TO	227+33.25	R	162.5		162.5			3
227+33.25	TO	228+08.25	R	75.0	25.0		1	1	1
225+08.25	TO	225+70.75	L	62.5	12.5		1	1	1
225+70.75	TO	227+33.25	L	162.5		162.5			3
227+33.25	TO	228+45.75	L	112.5	62.5		1	1	2
TOTAL					162.5	325.0	4	4	12

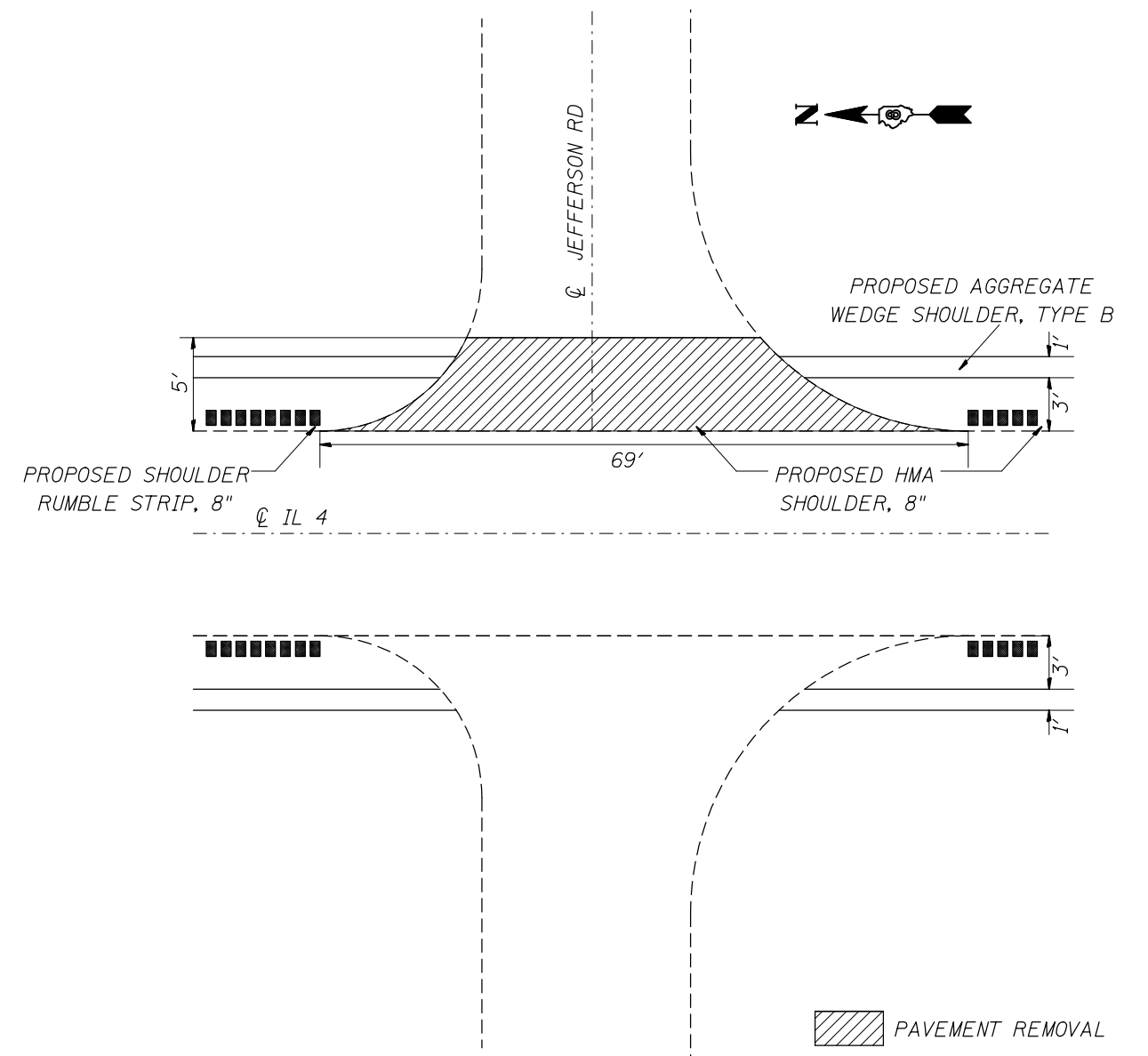
TEMPORARY RAMP SCHEDULE	
STATION	INCIDENTAL HMA SURFACING
	SQ YD
215+19.00	12.2
247+24.02	12.2
TOTAL	24.4

CENTERLINE RUMBLE STRIP DETAIL



NOTE: THE PROPOSED CENTERLINE PAVEMENT MARKINGS SHALL BE PLACED AFTER THE CONSTRUCTION OF THE RUMBLE STRIP. RUMBLE STRIP IS TO BE SPACED BETWEEN RAISED REFLECTIVE PAVEMENT MARKERS.

NOT TO SCALE



PAVED SHOULDER DETAIL E OF JEFFERSON RD.
STA. 238+16.47

NOTE: PAVEMENT STRUCTURE ON JEFFERSON RD IS UNKNOWN.

NOT TO SCALE

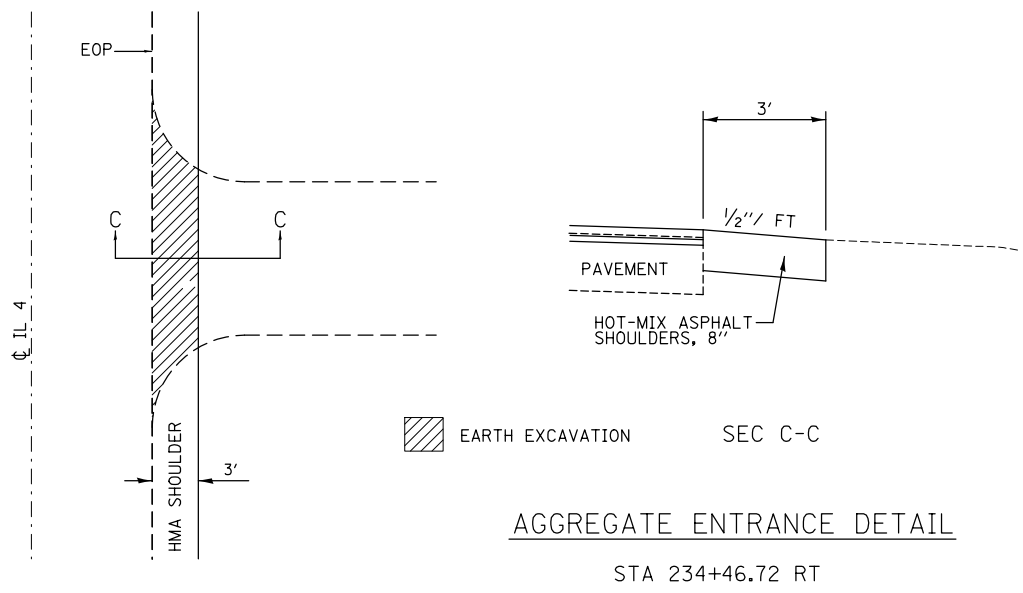
FILE NAME =	USER NAME = nivesa	DESIGNED -	REVISED -
et:\pw\work\p1dot\nivesa\d0418617\d876176-plan.dgn		DRAWN -	REVISED -
		CHECKED -	REVISED -
		DATE -	REVISED -

STATE OF ILLINOIS
DEPARTMENT OF TRANSPORTATION

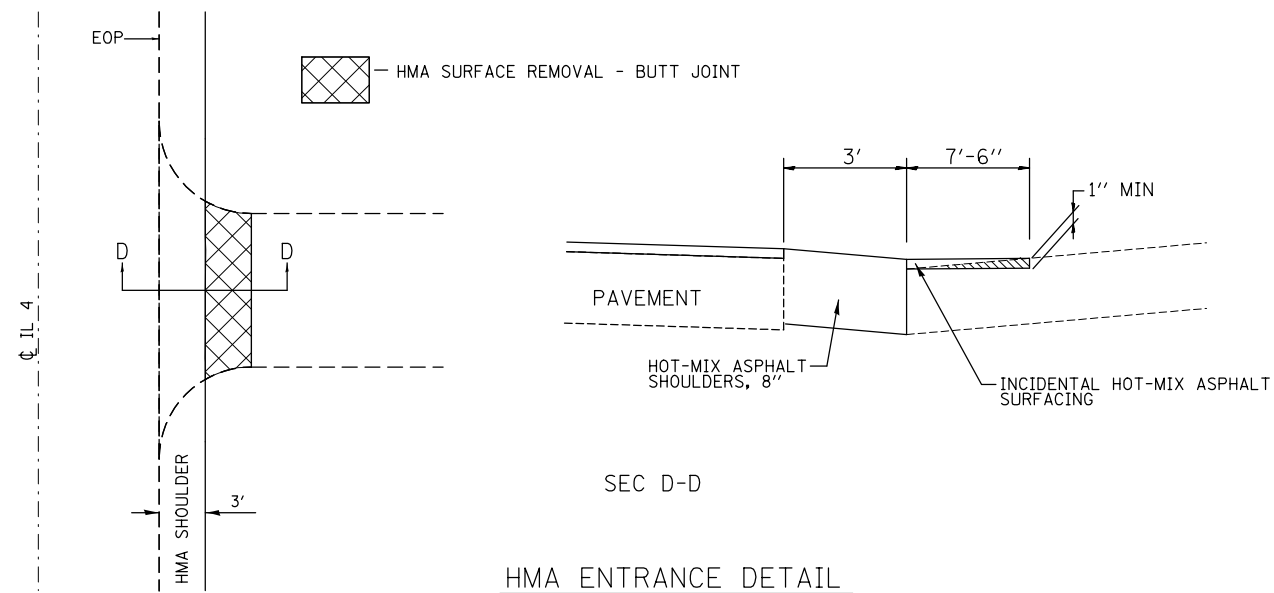
DETAIL SHEET

SCALE: NTS SHEET NO. OF SHEETS STA. TO STA.

F.A.P. RTE.	SECTION	COUNTY	TOTAL SHEETS	SHEET NO.
678	52-I	ST. CLAIR	12	11
CONTRACT NO. 76H79				
FED. ROAD DIST. NO. ILLINOIS FED. AID PROJECT				



NOT TO SCALE



NOT TO SCALE

FILE NAME =	USER NAME = nivesa	DESIGNED -	REVISED -
et:\pw\work\p\dot\nivesa\d0418617\d876176-plan.dgn		DRAWN -	REVISED -
	PLOT SCALE = 100.0000' / 1in.	CHECKED -	REVISED -
	PLOT DATE = 3/18/2015	DATE -	REVISED -

STATE OF ILLINOIS
DEPARTMENT OF TRANSPORTATION

DETAIL SHEET

SCALE: NTS SHEET NO. OF SHEETS STA. TO STA.

F.A.P. RTE.	SECTION	COUNTY	TOTAL SHEETS	SHEET NO.
678	52-I	ST. CLAIR	12	12
FED. ROAD DIST. NO. ILLINOIS FED. AID PROJECT			CONTRACT NO. 76H79	