

**INDEX OF SHEETS**

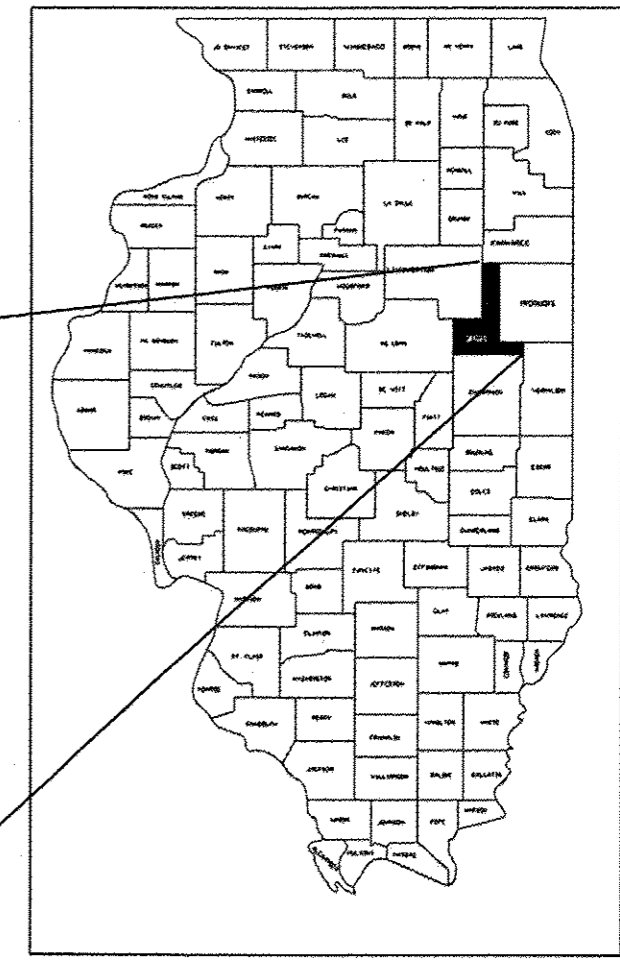
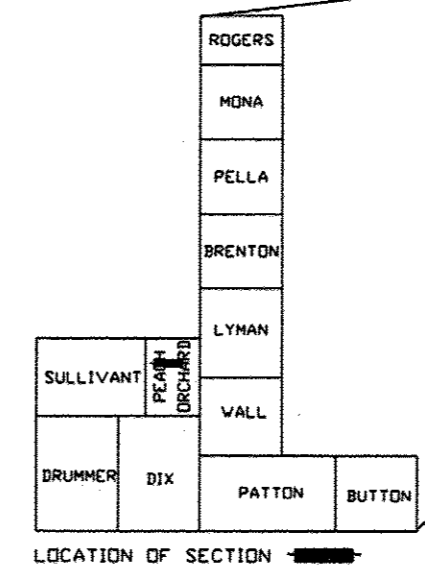
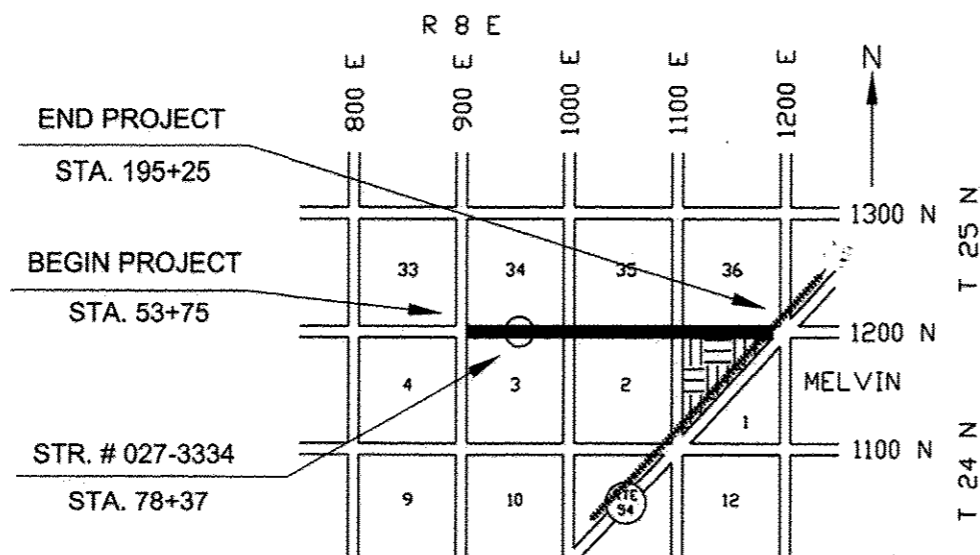
- SHEET 1. COVER SHEET
- SHEET 2. TYPICAL CROSS SECTION, SUMMARY OF QUANTITIES, STRUCTURAL DESIGN, BITUMINOUS MIXTURE TABLE
- SHEET 3. TYPICAL ENTRANCE DETAIL, MAILBOX DETAILS, SIDE ROAD RETURN, GENERAL NOTES

**STANDARDS**

- 000001-06 STANDARD SYMBOLS, ABBREVIATIONS AND PATTERNS
- 701301-04 LANE CLOSURE 2 LANE, 2 WAY, SHORT TIME OPERATIONS
- 701306-03 LANE CLOSURE 2 LANE, 2 WAY, SLOW MOVING OPERATIONS - DAY ONLY FOR SPEEDS > 45 MPH
- 701311-03 LANE CLOSURE 2 LANE, 2 WAY, MOVING OPERATIONS - DAY ONLY
- 701901-04 TRAFFIC CONTROL DEVICES
- 780001-05 TYPICAL PAVEMENT MARKINGS

STATE OF ILLINOIS  
DEPARTMENT OF TRANSPORTATION  
DIVISION OF HIGHWAYS  
**PLANS FOR PROPOSED  
SURFACE TRANSPORTATION RURAL PROGRAM**  
C.H. 3 (MELVIN - SIBLEY ROAD)  
F.A.S. ROUTE 341 SECTION 17-00122-00-RS FORD COUNTY  
PROJECT RS- 0341(114)  
JOB NO. C-93-068-15

FAS NO	SECTION	COUNTY	TOTAL SHEETS	SHEET NO.
341	17-00122-00-RS		3	1
PROJECT RS - 0341(114) CONTRACT # 87619				



**UTILITIES**

UTILITIES ON THIS SECTION AT VARIOUS LOCATIONS INCLUDES TO THE BEST OF OUR KNOWLEDGE:  
FRONTIER TELEPHONE COMPANY (UNDERGROUND)  
OVERHEAD POWER - EASTERN ILLINI  
PIPELINES: PEOPLES GAS, MOBILE PETROLEUM, MID-AMERICA NGL

CONTRACTORS OR SUBCONTRACTORS SHALL CONTACT J.U.L.I.E. (1-800-892-0123) AT LEAST 72 HOURS PRIOR TO ANY EXCAVATION FOR UTILITIES LOCATION

JOB NO. C-93-068-15  
CONTRACT NO. 87619

NOT TO SCALE  
GROSS LENGTH = 14,150' = 2.679 MI.  
NET LENGTH = 14,150' = 2.679 MI.  
PREVIOUS CONSTRUCTION BY SECTION NUMBERS  
86-00055-00-RS  
FUNCTIONAL CLASSIFICATION: MAJOR COLLECTOR

*Gregory L. Perkinson*  
ILLINOIS PROFESSIONAL NO. 062-035801

EXPIRES 11-30-2015

CURRENT (2015) ADT = 300 - 88% PC  
9% SU  
3% MU  
DESIGN ADT (2023) = 350  
DESIGN SPEED = 50 MPH



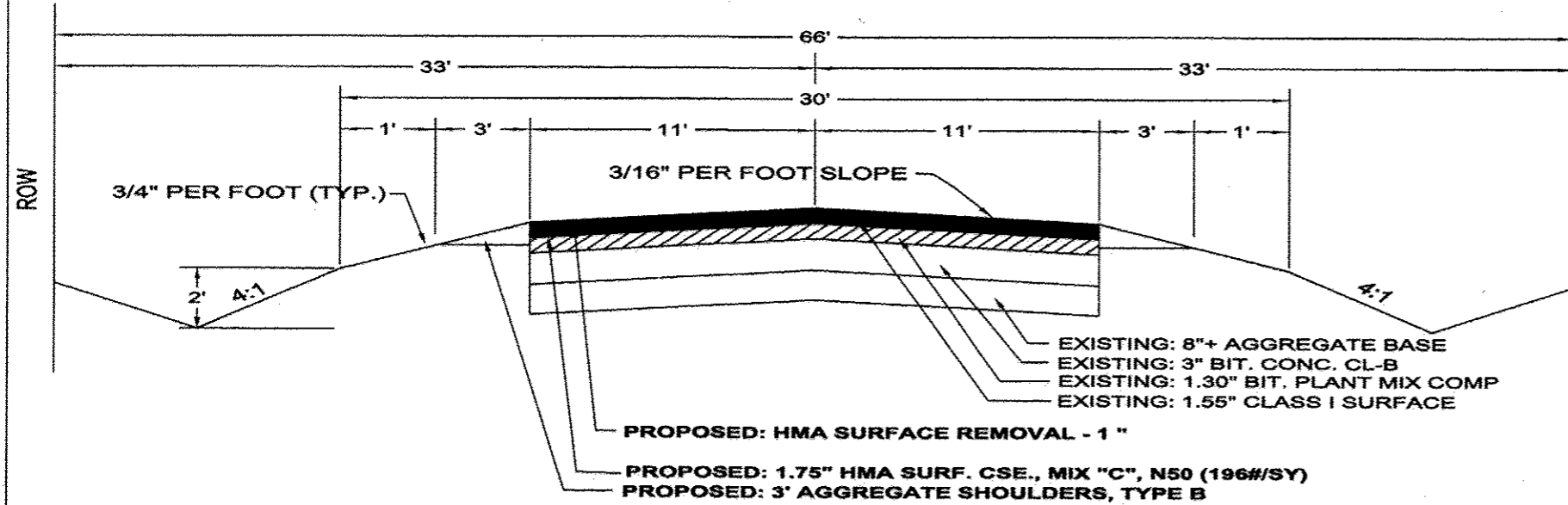
THE ACCEPTANCE OF THIS PROJECT IS BASED ON THE MINIMUM DESIGN CRITERIA UNDER 3R GUIDELINES.

APPROVED	<u>3/24/2015</u> <i>Gregory L. Perkinson</i> FORD COUNTY, COUNTY ENGINEER
PASSED	<u>3/27/15</u> <i>David Ernst</i> DISTRICT 3 ENGINEER OF LOCAL ROADS & STREETS
Releasing for Bid Based on Limited Review	<u>3/27/15</u> <i>Paul Salep</i> DEPUTY DIRECTOR OF HIGHWAYS, REGION 2 ENGINEER STATE OF ILLINOIS DEPARTMENT OF TRANSPORTATION

FAS NO.	SECTION	COUNTY	TOTAL SHEETS	SHEET NO.
341	17-00122-00-RS		3	2
PROJECT RS-0341(114)				
CONTRACT # 87619				

**TYPICAL CROSS SECTION  
SECTION 17-00122-00-RS ( MELVIN- SIBLEY ROAD )  
STATION 53+75 TO 195+25**

STRUCTURAL DESIGN  
STA. 53+75 TO STA. 195+25  
SEC. 17-00122-00-RS



STRUCTURAL DESIGN TRAFFIC YEAR	2023
CURRENT A.D.T.	300
A.D.T. 2023	350
P.V.	308
S.U.	31
M.U.	11
CLASS	IV
MINIMUM SOIL SUPPORT IBV	3
TRAFFIC FACTOR	0.009
Dt REQUIRED	2.00

EXISTING BASE:	
8" + AGGREGATE BASE	8" X 0.06 = 0.480
3.0" BIT PLANT MIX (LA)	3.0" X 0.12 = 0.360
1.30" BIT. CONC MIXTURE COMPLETE	1.30" X 0.23 = 0.299
1.55" BIT. CONC CL I (POST 1955)	1.55" X 0.30 = 0.465
SUBTOTAL EXISTING	1.604
PROPOSED:	
COLD MILL 1.0" EXISTING SURFACE	1.0" X -0.30 = -0.300
1.75" HMA SURF. CSE., MIX "C", N50	1.75" X 0.40 = 0.700
Dt TOTAL	2.004

SUMMARY OF QUANTITIES

CONSTRUCTION TYPE CODE 0005

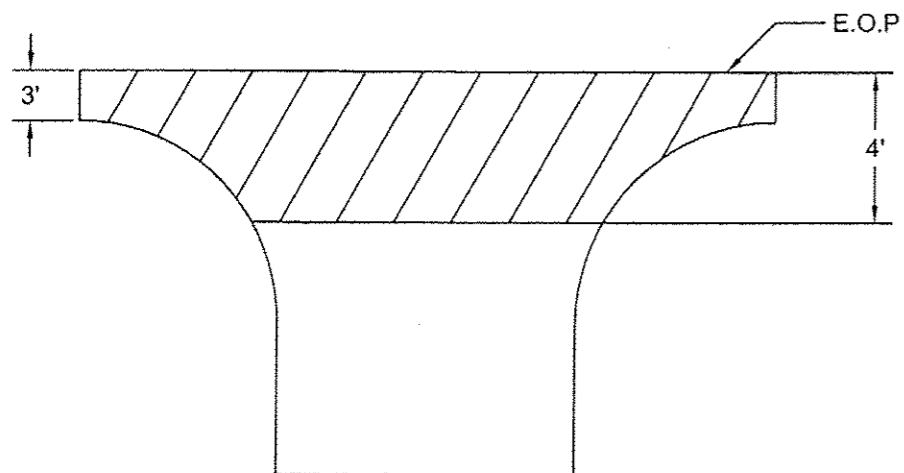
CODE NO.	ITEM	UNIT	QUANTITY
* 40600275	BITUMINOUS MATERIALS (PRIME COAT)	POUND	16,210
40600990	TEMPORARY RAMP	SQ YD	10
40603310	HOT-MIX ASPHALT SURFACE COURSE, MIX "C", N50	TON	3,450
40800050	INCIDENTAL HOT-MIX ASPHALT SURFACING	TON	55
44000153	HOT-MIX ASPHALT SURFACE REMOVAL, 1"	SQ YD	37,590
* 48101200	AGGREGATE SHOULDERS, TYPE B	TON	780
67100100	MOBILIZATION	L SUM	1
70100460	TRAFFIC CONTROL AND PROTECTION, STANDARD 701306	L SUM	1
70300100	SHORT TERM PAVEMENT MARKING	FOOT	2,830
70301000	WORK ZONE PAVEMENT MARKING REMOVAL	SQ FT	470
# 78001110	PAINT PAVEMENT MARKING - LINE 4"	FOOT	4,300
# 78003180	PREFORMED PLASTIC PAVEMENT MARKING, TYPE B - LINE 24"	FOOT	22
* Z0048665	RAILROAD PROTECTIVE LIABILITY INSURANCE	L SUM	1

\* INDICATES SEE SPECIAL PROVISIONS

# INDICATES SPECIALTY ITEM

**BITUMINOUS MIXTURE TABLE**

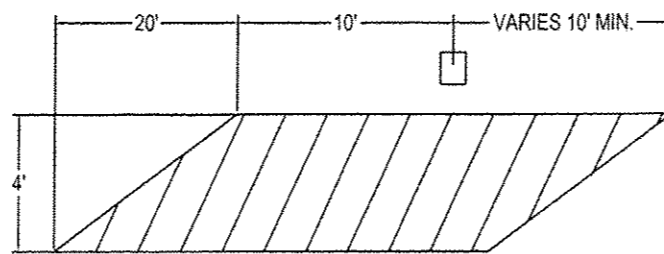
LOCATION (S):	MAINLINE	INTERSECTIONS
MIXTURE USE (S):	HMA LEVEL BINDER	HMA SURFACE
PG GRADE	N/A	PG 64-22
DESIGN AIR VOIDS	N/A	4.0 % @ N50
MIX COMPOSITION	N/A	IL 9.5
FRICTION AGGREGATE	N/A	MIXTURE "C"
MIXTURE WEIGHT:	N/A	112.0 LB/SQ YD/INCH
QUALITY MANAGEMENT PROGRAM	N/A	QC/QA
SUBLOT SIZE:	N/A	N/A
DENSITY TEST METHOD:	N/A	CORRELATION
		SATISFACTION OF ENG.



**TYPICAL FIELD & PRIVATE ENTRANCE**

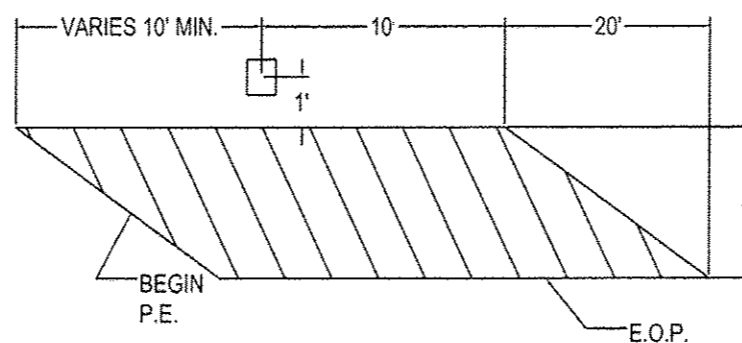
49 EACH

LT. STA.	RT. STA.	LT. STA.	RT. STA.
58+33	168+09	54+40	168+88
65+00	168+88	55+49	169+33
68+40	170+77	77+13	172+12 (2)
76+50	171+56	79+49	175+33
84+00	173+58	88+64	177+50
88+23	175+07	116+35	183+87
114+82	176+19	126+69	187+54
126+69	176+88	136+67	190+33
128+35 (2)	178+52	161+28	192+45
138+05	179+71		
147+87 (2)	181+17		
150+48	182+60		
163+17	183+87		
166+47	187+54		



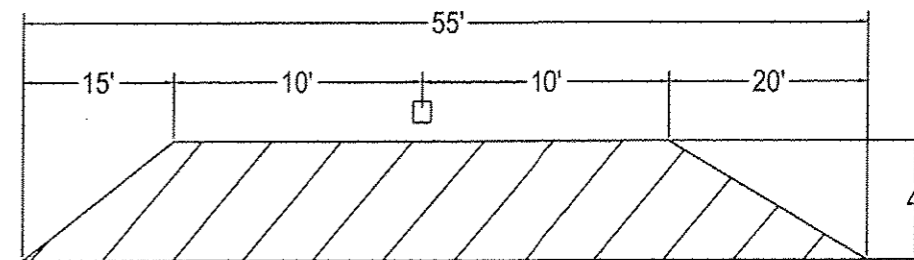
**TYPICAL MAILBOX FOLLOWING**

1 EACH  
175+54 RT



**TYPICAL MAILBOX LEAD IN**

2 EACH  
54+25 RT  
183+59 RT



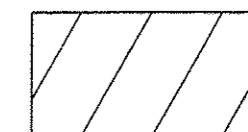
**TYPICAL MAILBOX TURN OUT**

8 EACH

126+38 RT	176+19 RT
150+48 RT	176+88 RT
170+77 RT	178+71 RT
171+56 RT	179+71 RT



AREA TO BE PAID AS  
INCIDENTAL BITUMINOUS SURFACING

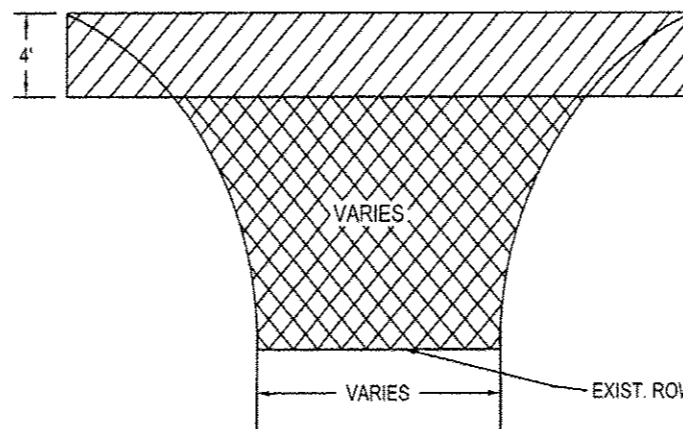


AREA TO BE CONSTRUCTED  
DURING MAINLINE PAVING OPERATIONS  
SLOPE = 3/4" PER FOOT

**NOTES**

1. USE SAME MAINLINE MATERIAL FOR SIDE ROAD RETURNS, FIELD & PRIVATE ENTRANCES, AND MAILBOXES.
2. AGGREGATE SHOULDERS TO BE PLACED BEHIND SIDE ROAD RETURNS, FIELD & PRIVATE ENTRANCES, AND MAILBOXES AS DIRECTED BY THE ENGINEER.
3. SHORT TERM PAVEMENT MARKINGS TO BE REMOVED BY THE CONTRACTOR.
4. THE FOLLOWING APPLICATION RATES HAVE BEEN ASSUMED IN CALCULATING QUANTITIES:

AGGREGATE SHOULDERS	2.00 TON / CU YD
BIT MATL (PR CT)	0.05 LBS / SQ FT
HOT MIX ASPHALT	112 # / SQ YD / INCH
SHORT TERM PVMT MKING	4 FT / 40 FT OF APPL.



**TYPICAL SIDE ROAD RETURN**

9 EACH

104+74 LT	157+88 RT	166+95 RT
157+88 LT	159+66 RT	170+79 RT
104+98 RT	163+17 RT	174+26 RT