

ROAD CLASSIFICATION: MAJOR COLLECTOR
DESIGN SPEED: 50 M.P.H.

STATE OF ILLINOIS 06-12-2015 LETTING ITEM 224

ROUTE	SECTION	COUNTY	SHEET NO.
CH 39	10-00180-00-RS	FRANKLIN	1 OF 8
			CONTRACT 99553

ADT:
(2015) = 1150
(2035) = 1550
PC = 1364
SU = 109
MU = 77
DHV₂₀ = 155

DEPARTMENT OF TRANSPORTATION
DIVISION OF HIGHWAYS

PLANS FOR PROPOSED ROADWAY IMPROVEMENTS
CH 39 REND LAKE ROAD / MINE 24 ROAD / LICATA ROAD /
DUQUOIN STREET
Franklin County, Illinois
Section 10-00180-00-RS
Project RS-0055(069)
Job C-99-535-11

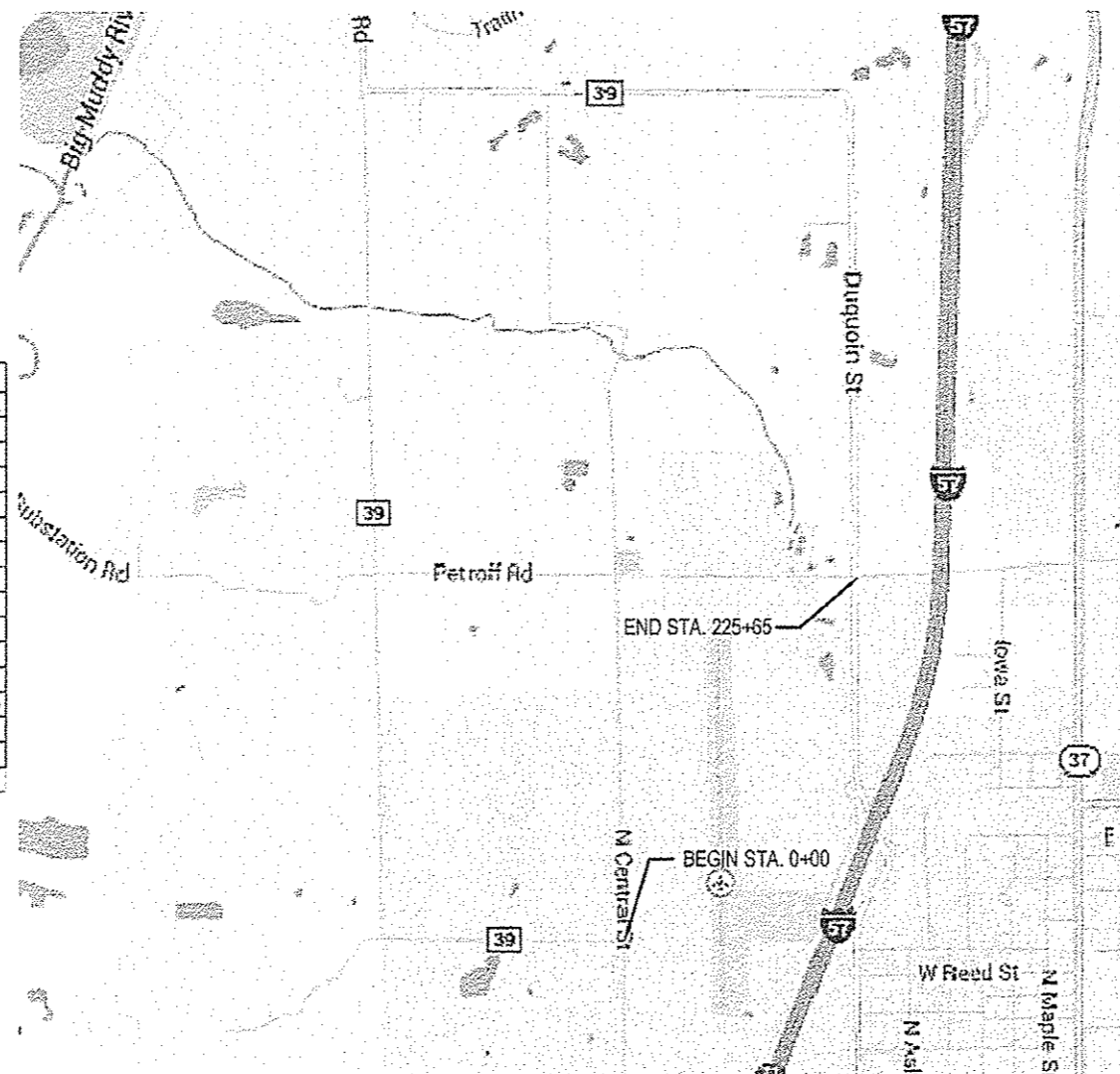


SHEET NO.	TITLE
1	COVER SHEET AND SUMMARY OF QUANTITIES
2	MISCELLANEOUS DETAILS AND TYPICAL SECTIONS
3	MISCELLANEOUS DETAILS
4-8	PLAN

STANDARDS

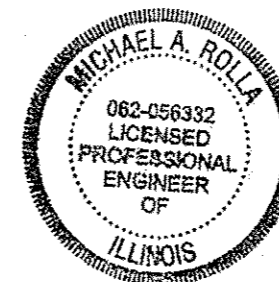
701006-05
701201-04
701301-04
701306-03
701311-03
701901-04
780001-05
BLR 24-2

SUMMARY OF QUANTITIES					
CODE NO.	PAY ITEM	UNIT	FED	LOCAL	TOTAL
40200800	AGGREGATE SURFACE COURSE, TYPE B	TON	81	27	108
40600275	BITUMINOUS MATERIALS (PRIME COAT)	POUND	4,960	3,142	8,102
40600982	HOT-MIX ASPHALT SURFACE REMOVAL	SQ YD	191	321	512
	-BUTT JOINT				
40603090	HOT-MIX ASPHALT BINDER COURSE, IL 19.0, N90	TON	2,992	3,006	5,998
40603320	HOT-MIX ASPHALT SURFACE COURSE, MIX "C", N90	TON	2,373	2,364	4,737
48100100	AGGREGATE SHOULDERS, TYPE A	TON	2,181	2,481	4,662
67100100	MOBILIZATION	L SUM	1		1
70300100	SHORT-TERM PAVEMENT MARKING	FOOT	2,131	2,382	4,513
Δ78001110	PAINT PAVEMENT MARKING - LINE 4"	FOOT	32,607	37,413	70,020
X4401198	HOT-MIX ASPHALT SURFACE REMOVAL -VARIABLE DEPTH	SQ YD		160	160
Δ	SPECIALTY ITEMS				



LOCATION MAP

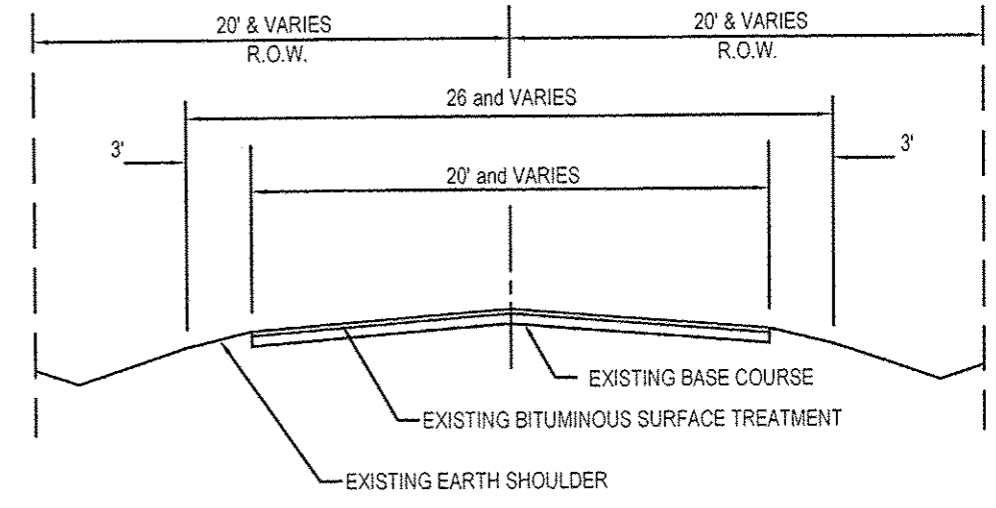
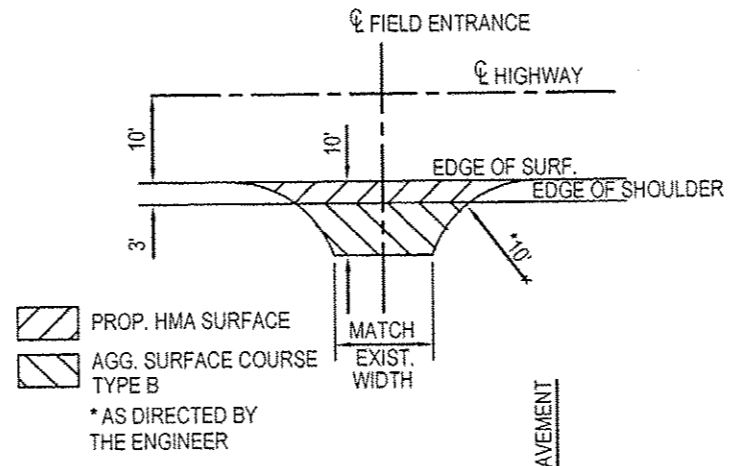
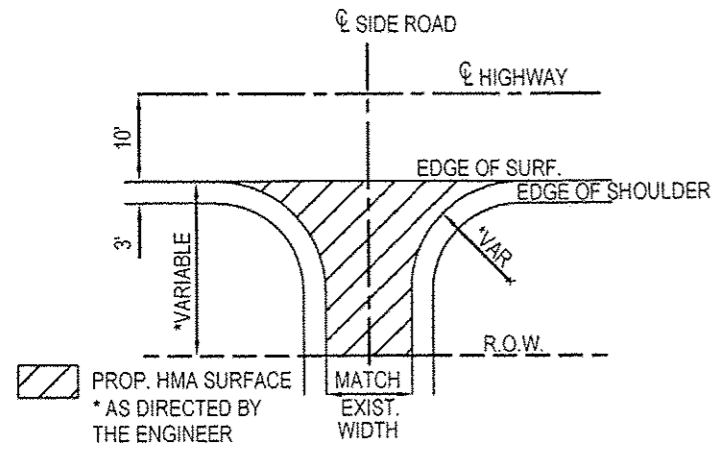
NET LENGTH = 4.27 MILES (22,565 FEET)



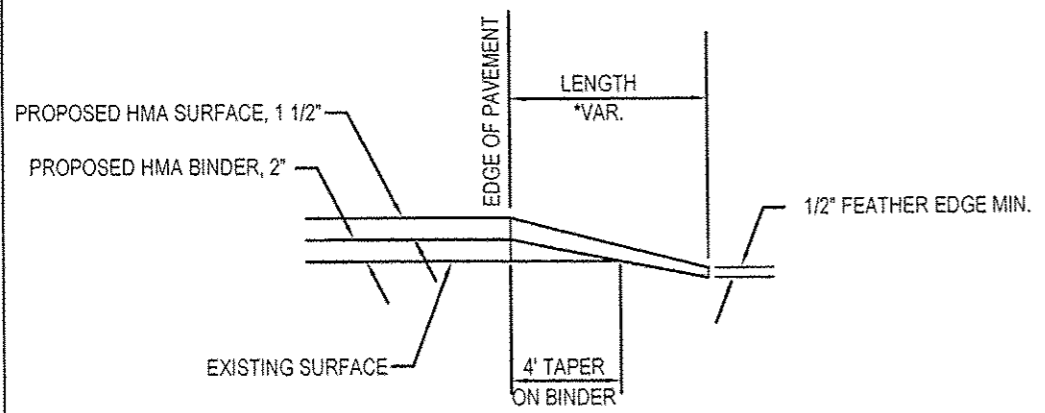
STATE OF ILLINOIS DEPARTMENT OF TRANSPORTATION	
APPROVED	4/6/2015 <i>Michael A. Rolla</i>
FRANKLIN COUNTY HIGHWAY ENGINEER	
PASSED	4/8/2015 <i>Don W. Hill</i>
DISTRICT 9 ENGINEER OF LOCAL ROADS & STREETS	
RELEASING FOR BID	
BASED ON LIMITED	
REVIEW	4/8/2015 <i>Jeffrey L. Klein</i>
DEPUTY DIRECTOR OF HIGHWAYS, REGION 5 ENGINEER	

Michael A. Rolla
MICHAEL A. ROLLA
ILLINOIS REGISTERED PROFESSIONAL ENGINEER
#062-056332
LIC. EXPIRES 11/30/2015

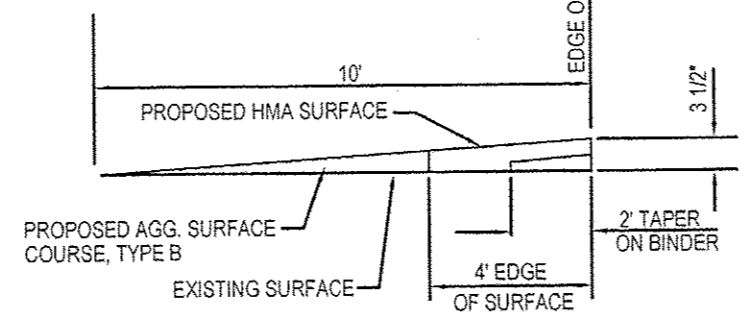
ROUTE	SECTION	COUNTY	SHEET NO.
CH 39	10-00180-00-RS	FRANKLIN	2 OF 8
CONTRACT 99553			



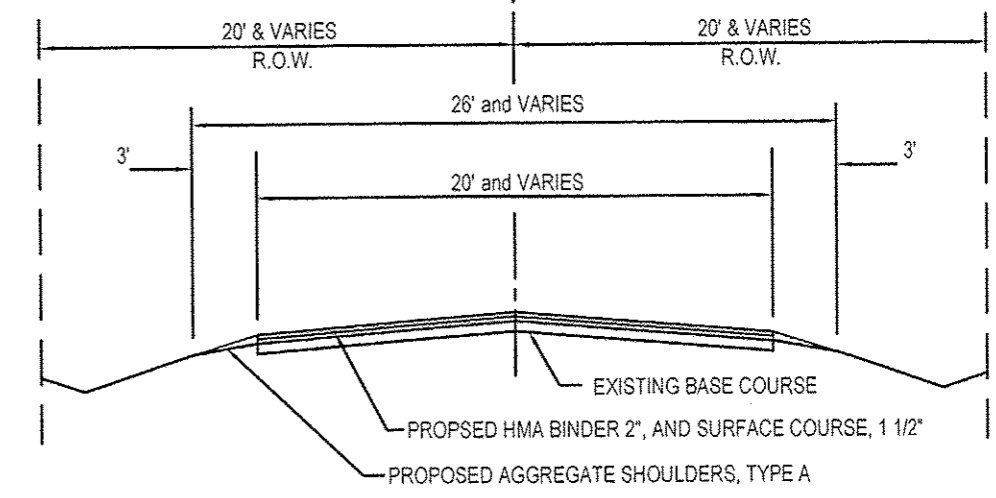
TYPICAL EXISTING SECTION



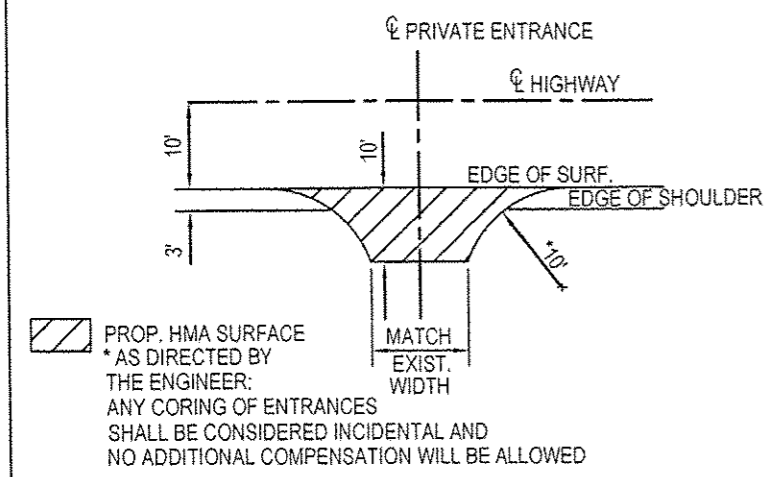
SIDEROAD DETAILS



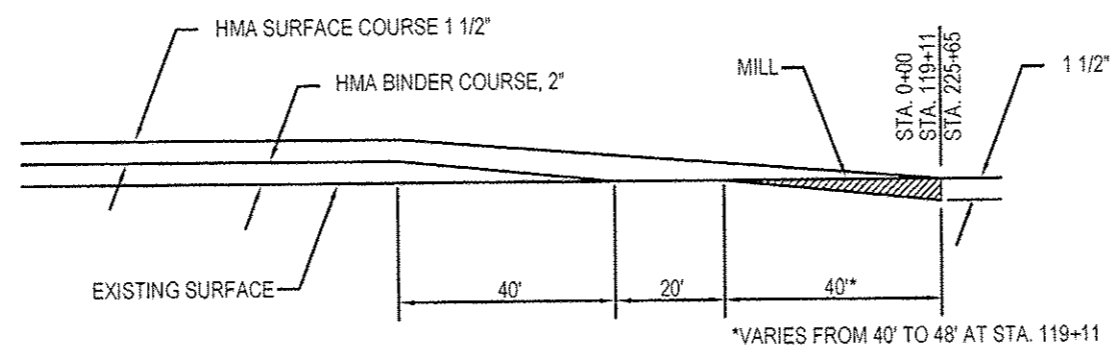
FIELD ENTRANCE DETAILS



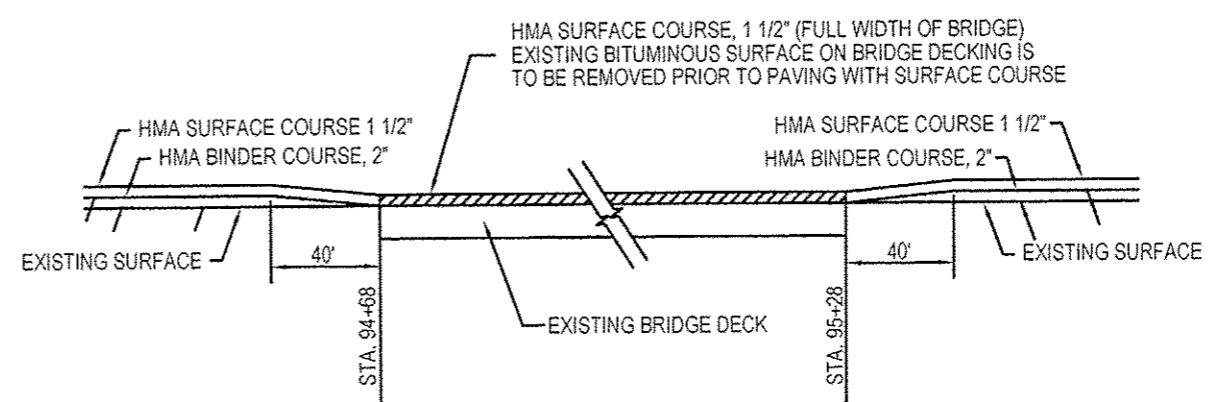
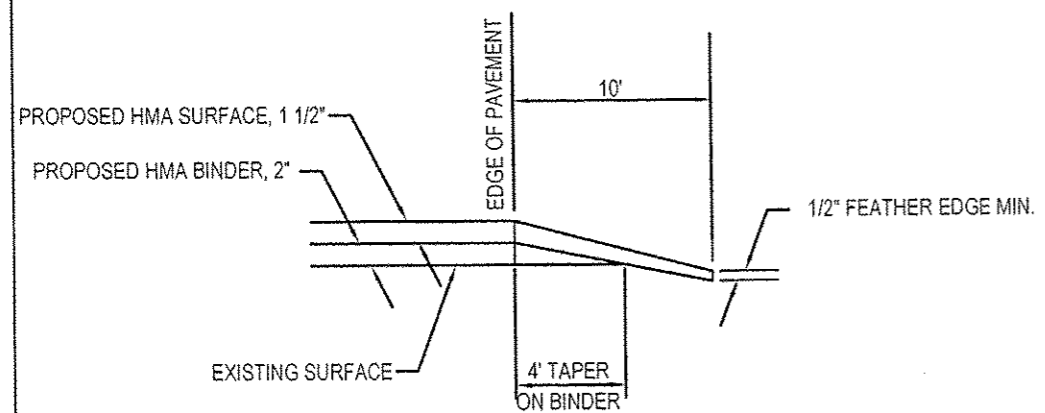
TYPICAL PROPOSED SECTION



PRIVATE AND COMMERCIAL ENTRANCE DETAILS



BUTT JOINT



SURFACING AT BRIDGE

MISCELLANEOUS DETAILS & TYPICAL SECTIONS

PROP. HMA SURFACE *AS DIRECTED BY THE ENGINEER: ANY CORING OF ENTRANCES SHALL BE CONSIDERED INCIDENTAL AND NO ADDITIONAL COMPENSATION WILL BE ALLOWED

PROP. HMA SURFACE
AGG. SURFACE COURSE TYPE B
*AS DIRECTED BY THE ENGINEER

HMA SURFACE COURSE, 1 1/2" (FULL WIDTH OF BRIDGE)
EXISTING BITUMINOUS SURFACE ON BRIDGE DECKING IS TO BE REMOVED PRIOR TO PAVING WITH SURFACE COURSE

FIELD ENTRANCE QUANTITIES		
ENTRANCES	AGGREGATE SURFACE COURSE TYPE B, TON	HOT MIX ASPHALT SURFACE COURSE, MIX "C", N90, TON
ONE (1) ENTRANCE	3	1
TOTAL = 36 ENTRANCES	108	36

MAILBOX TURNOUT QUANTITIES		
TURNOUT	BITUMINOUS MATERIALS (PRIME COAT) GALLON	HOT MIX ASPHALT SURFACE COURSE, MIX "C", N90, TON
ONE (1) TURNOUT	4	1
TOTAL = 25 TURNOUTS	100	25

PRIVATE ENTRANCE QUANTITIES		
ENTRANCES	BITUMINOUS MATERIALS (PRIME COAT) GALLON	HOT MIX ASPHALT SURFACE COURSE, MIX "C", N90, TON
ONE (1) ENTRANCE	10	4
TOTAL = 42 ENTRANCES	420	168

COMMERCIAL ENTRANCE QUANTITIES		
ENTRANCES	BITUMINOUS MATERIALS (PRIME COAT) GALLON	HOT MIX ASPHALT SURFACE COURSE, MIX "C", N90, TON
ONE (1) ENTRANCE	15	5
TOTAL = 6 ENTRANCES	90	30

SCHEDULE OF PAVEMENT MARKING LINE, 4"							
WESTBOUND/NORTHBOUND/EASTBOUND/SOUTHBOUND LANE			EASTBOUND/SOUTHBOUND/WESTBOUND/NORTHBOUND LANE			STATION	EDGE LINE (WHITE SOLID)
STATION	NO PASSING (YELLOW SOLID)	CENTERLINE (YELLOW DASHED)	STATION	NO PASSING (YELLOW SOLID)	CENTERLINE (YELLOW DASHED)		
0+00 TO 2+56		64	2+56 TO 10+55		200	0+00 TO 225+65	44876
2+56 TO 9+00	644		10+55 TO 44+15	3360			
10+55 TO 13+00		61	70+50 TO 79+90		235		
13+00 TO 26+40	1340		79+90 TO 83+15	325			
26+40 TO 30+00		90	83+15 TO 87+65		113		
30+00 TO 34+00	400		87+65 TO 95+65	800			
34+00 TO 70+50		913	95+65 TO 101+55		148		
70+50 TO 77+00	650		101+55 TO 118+50	1695			
77+00 TO 80+20		8	124+50 TO 129+15		116		
80+20 TO 87+50	730		129+15 TO 133+15	400			
87+50 TO 94+00		159	133+15 TO 139+65		163		
94+00 TO 106+00	1200		139+65 TO 147+65	800			
106+00 TO 109+50		88	149+60 TO 158+65		226		
109+50 TO 114+00	450		158+65 TO 165+95	730			
114+00 TO 118+50		113	165+95 TO 171+15		130		
118+50 TO 124+50		130	171+15 TO 181+15	1000			
124+50 TO 126+50	200		181+15 TO 191+15		250		
126+50 TO 130+50		34	191+15 TO 196+65	550			
130+50 TO 133+50	300		196+65 TO 202+65		150		
133+50 TO 149+60		249	202+65 TO 207+65	500			
149+60 TO 157+35	775		207+65 TO 212+50		121		
157+35 TO 163+60		124	212+50 TO 217+65	515			
163+60 TO 173+00	940		217+65 TO 223+90		156		
173+00 TO 180+00		175	223+90 TO 225+65	175			
180+00 TO 187+00	700						
187+00 TO 191+15		71					
191+15 TO 194+00							
194+00 TO 199+00	500						
199+00 TO 202+65		21					
202+65 TO 203+50	470						
203+50 TO 208+20							
208+20 TO 212+50		103					
212+50 TO 216+60	540						
216+60 TO 222+00							
222+00 TO 223+90		44					
223+90 TO 225+65							
TOTALS	9839	2447		10850	2008		44876

MILLING SCHEDULE		
LOCATION	TYPE	COLD MILLING
STA. 0+00 TO 0+40	BUTT JOINT	89
STA. 94+68 TO 95+28	VARIABLE DEPTH	160
STA. 118+89 TO 119+34	BUTT JOINT	232
STA. 225+25 TO 225+66	BUTT JOINT	191
TOTAL		672

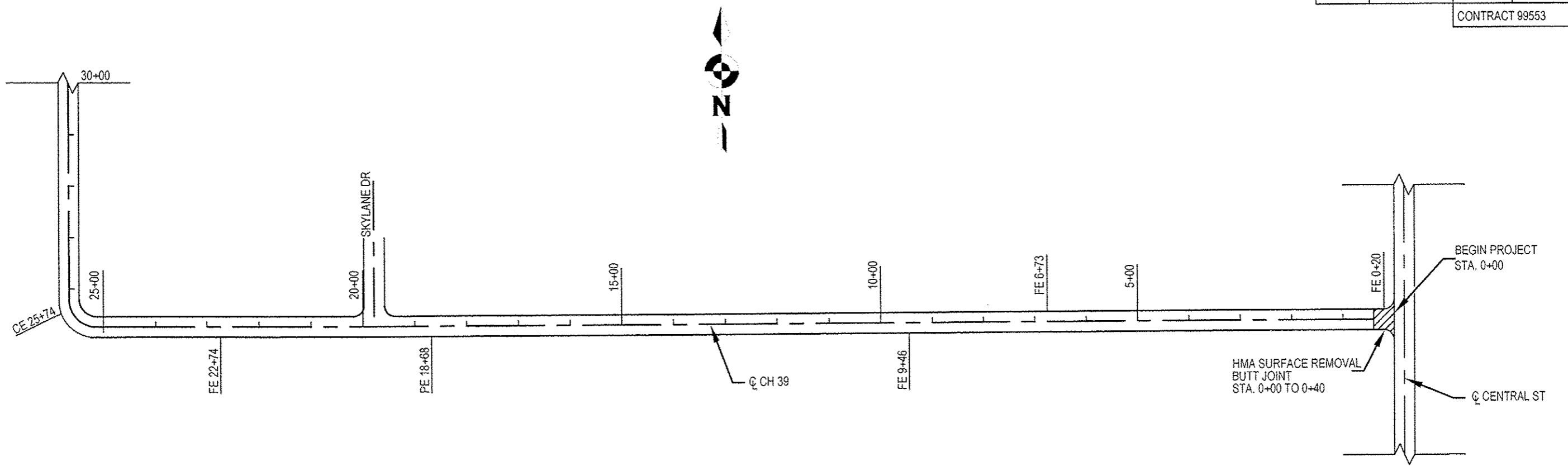
SIDEROAD ENTRANCE QUANTITIES	
LOCATION	HOT MIX ASPHALT SURFACE COURSE, MIX "C", N90, TON
STA 19+78 RT	6.7
STA 65+77 RT	22.3
STA 139+10 RT	11.2
TOTAL = 3 SIDEROADS	40.40

MISCELLANEOUS DETAILS

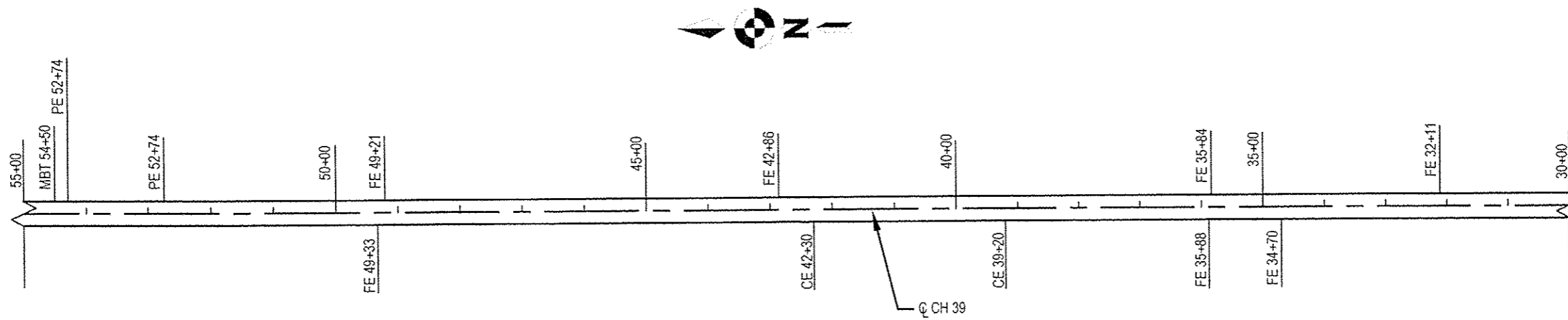
SCALE 1" = 200'

ROUTE	SECTION	COUNTY	SHEET NO.
CH 39	10-00180-00-RS	FRANKLIN	4 OF 8

CONTRACT 99553



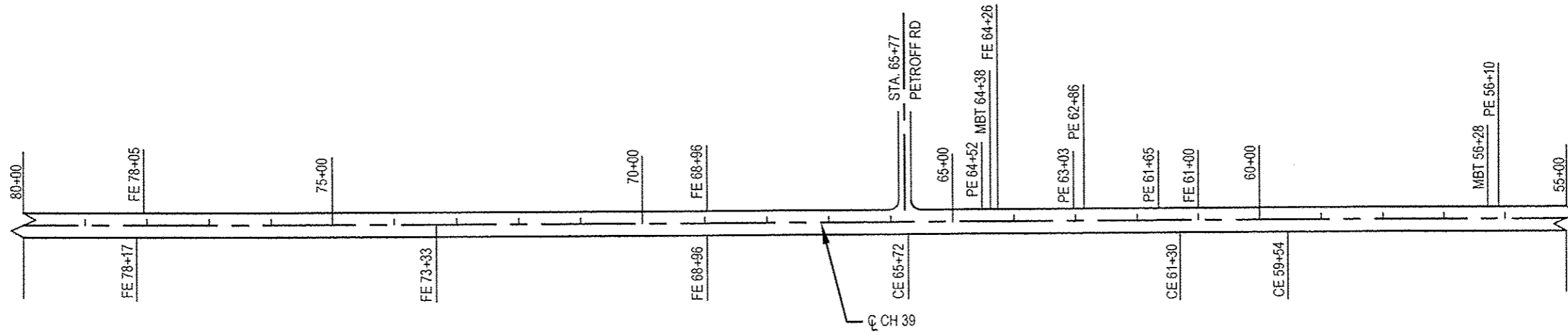
SCALE 1" = 200'



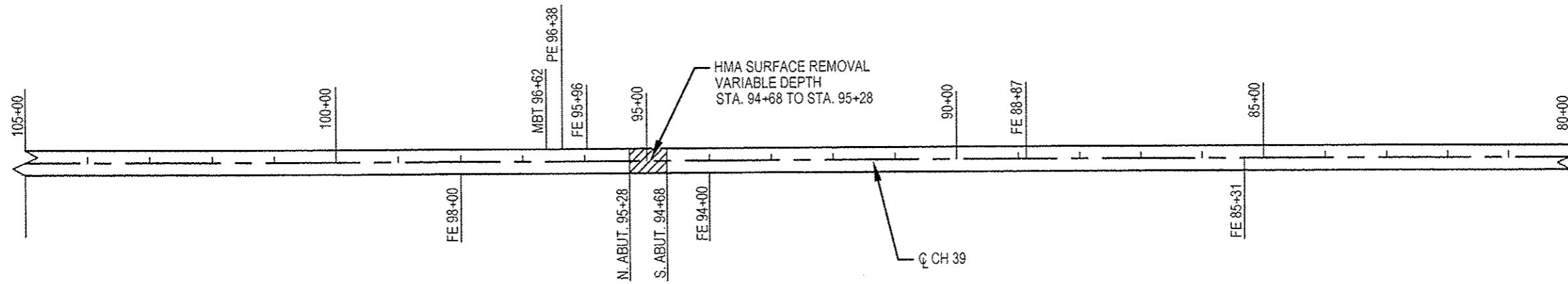
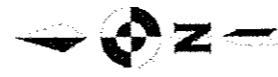
PLAN
STATION 0+00 TO 55+00

SCALE 1" = 200'

ROUTE	SECTION	COUNTY	SHEET NO.
CH 39	10-00180-00-RS	FRANKLIN	5 OF 8
CONTRACT 99553			



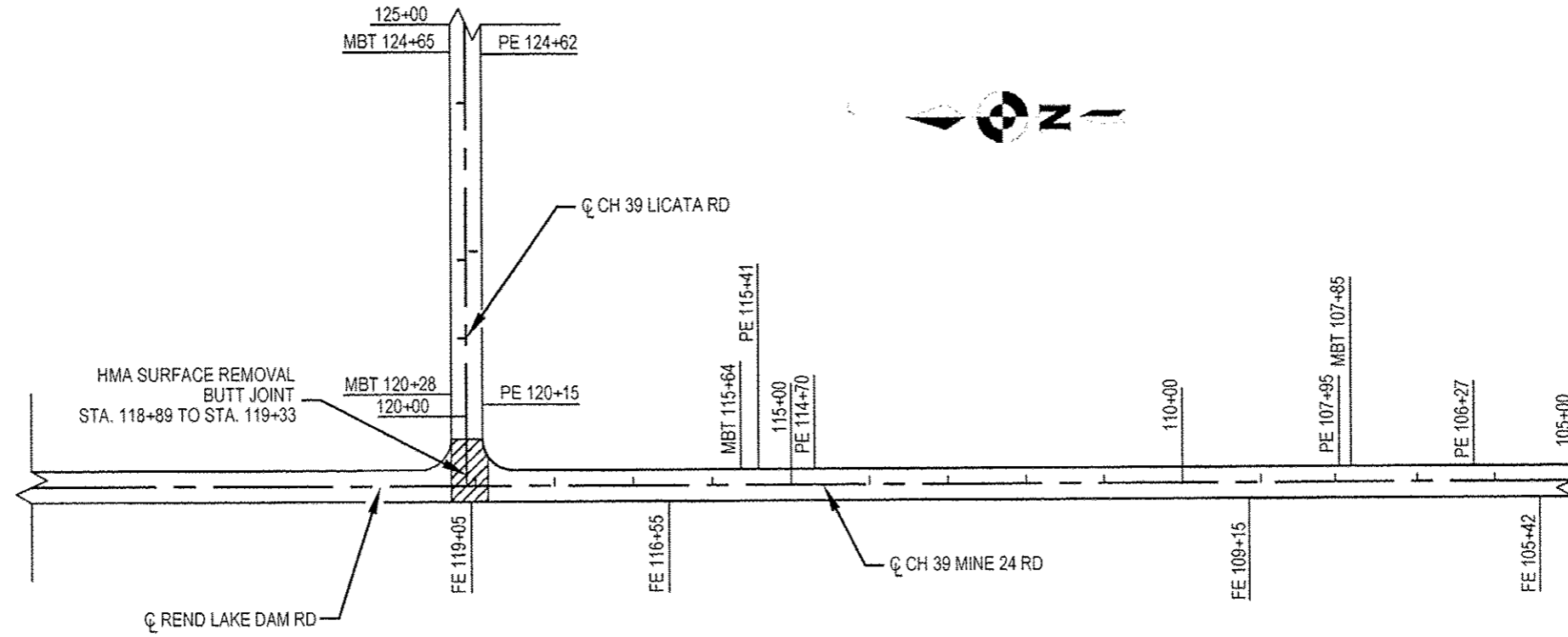
SCALE 1" = 200'



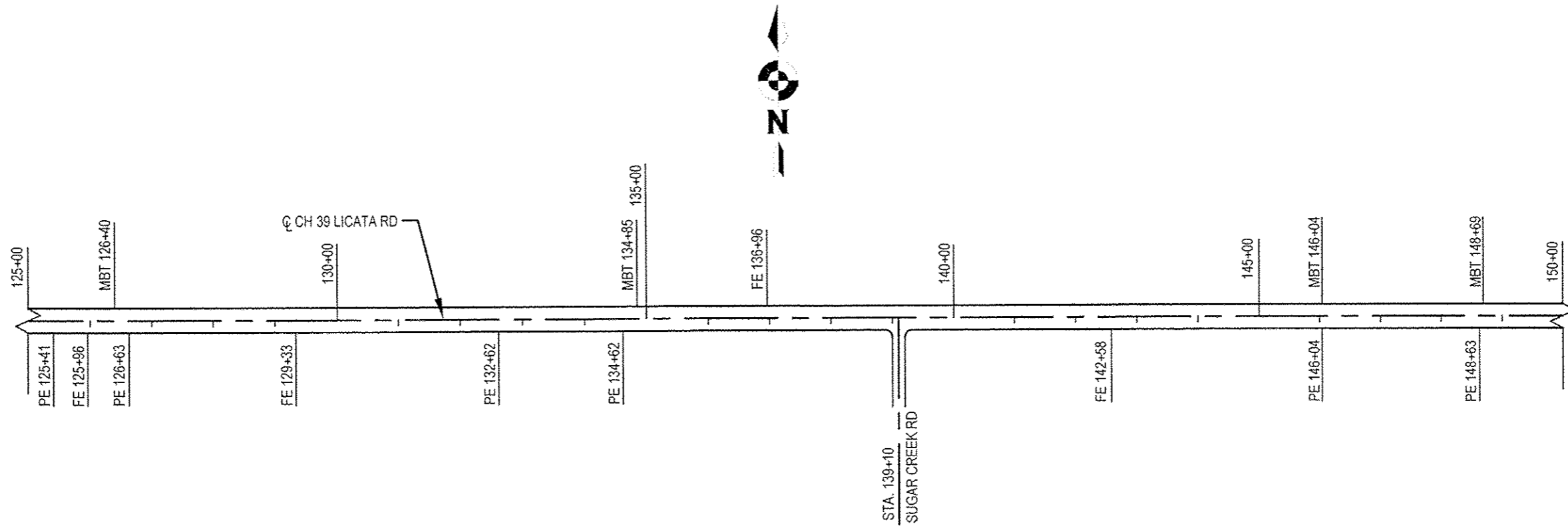
PLAN
STATION 55+00 TO 105+00

SCALE 1" = 200'

ROUTE	SECTION	COUNTY	SHEET NO.
CH 39	10-00180-00-RS	FRANKLIN	6 OF 8
CONTRACT 99553			



SCALE 1" = 200'

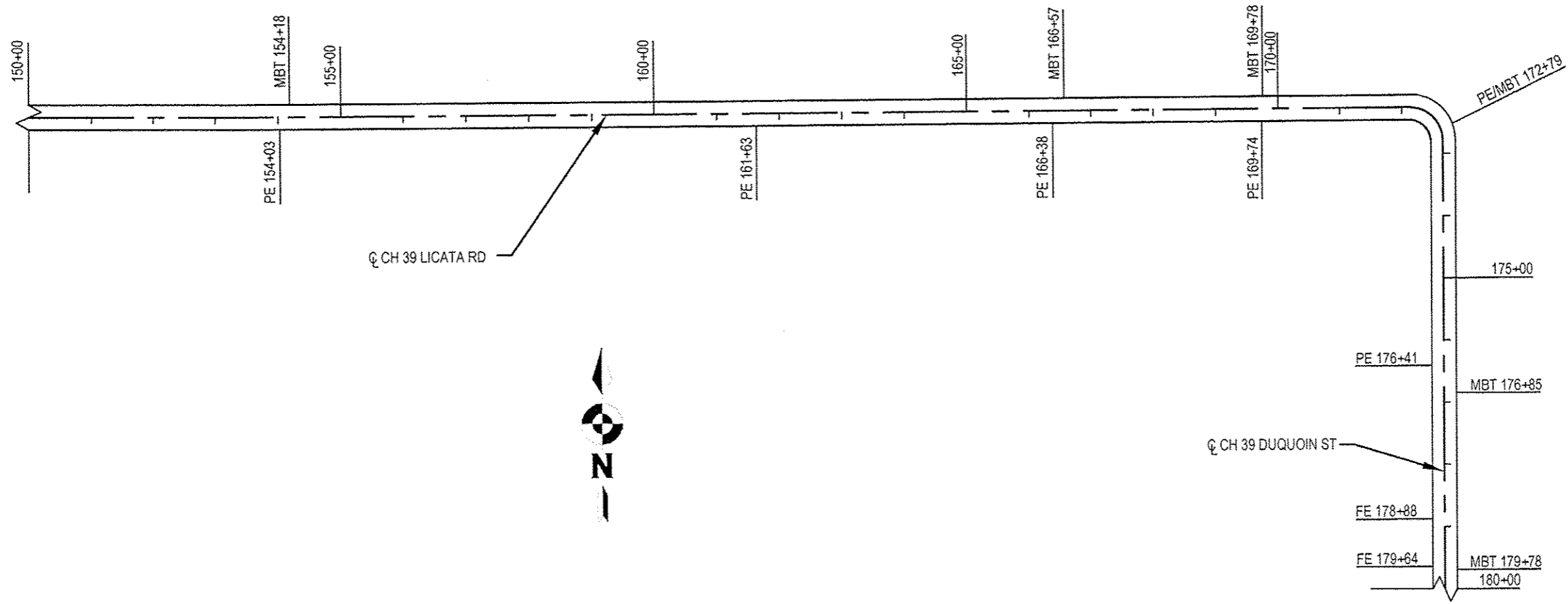


PLAN
STATION 105+00 TO 150+00

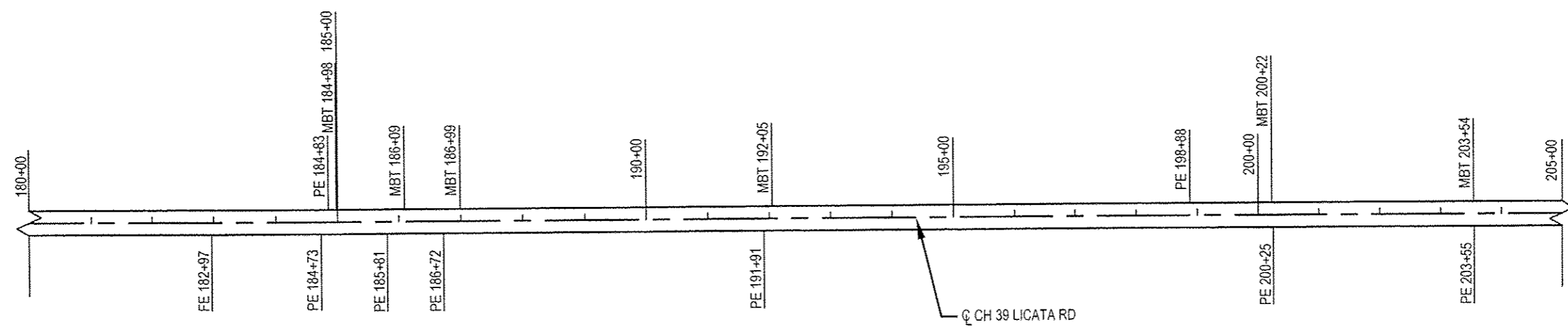
SCALE 1" = 200'

ROUTE	SECTION	COUNTY	SHEET NO.
CH 39	10-00180-00-RS	FRANKLIN	7 OF 8

CONTRACT 99553



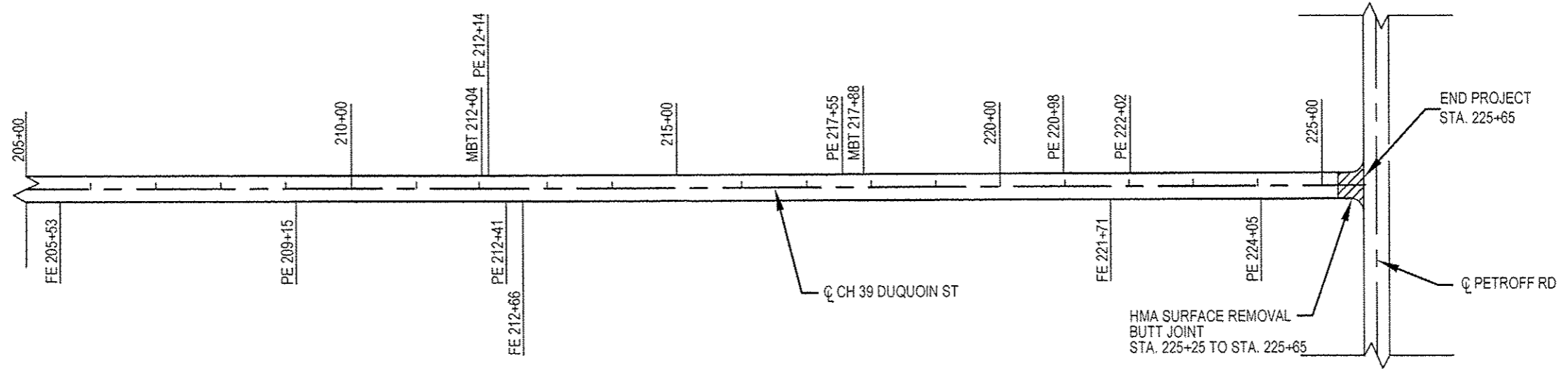
SCALE 1" = 200'



PLAN
STATION 150+00 TO 205+00

SCALE 1" = 200'

ROUTE	SECTION	COUNTY	SHEET NO.
CH 39	10-00180-00-RS	FRANKLIN	8 OF 8
CONTRACT 99553			



PLAN
STATION 205+00 TO 225+65