

MODEL: Default
 FILE NAME: P:\uplanroom.dat\illinois.gov\PWIDOT\Documents\DOT_Offices\District_3\Projects\0366K90\CADD\0366K90-01-cover.dgn

CODE NO.	ITEM	UNIT	TOTAL QUANTITY	CONSTR. CODE	
				100% STATE ROADWAY	
				0005	RURAL
44200610	CLASS A PATCHES, TYPE II, 13 INCH	SQ YD	548	548	
44200612	CLASS A PATCHES, TYPE III, 13 INCH	SQ YD	112	112	
44200614	CLASS A PATCHES, TYPE IV, 13 INCH	SQ YD	32	32	
44213000	PATCHING REINFORCEMENT	SQ YD	692	692	
44213200	SAW CUTS	FOOT	2816	2816	
44213204	TIE BARS 3/4"	EACH	3120	3120	
67100100	MOBILIZATION	L SUM	1	1	
70100420	TRAFFIC CONTROL AND PROTECTION, STANDARD 701411	EACH	28	28	
70100800	TRAFFIC CONTROL AND PROTECTION, STANDARD 701401	L SUM	1	1	
70103815	TRAFFIC CONTROL SURVEILLANCE	CAL DA	5	5	
70107025	CHANGEABLE MESSAGE SIGN	CAL DA	14	14	
* 78008210	POLYUREA PAVEMENT MARKING TYPE I - LINE 4"	FOOT	426	426	
* 78008230	POLYUREA PAVEMENT MARKING TYPE I - LINE 6"	FOOT	710	710	
X1700018	CLASS A PATCH - EXPANSION JOINT	FOOT	84	84	

*= SPECIALTY ITEM

USER NAME = pletschtr	DESIGNED - _____	REVISED - _____
	DRAWN - _____	REVISED - _____
PLOT SCALE = 100.0000' / in.	CHECKED - _____	REVISED - _____
PLOT DATE = 3/23/2020	DATE - _____	REVISED - _____

STATE OF ILLINOIS
DEPARTMENT OF TRANSPORTATION

SUMMARY OF QUANTITIES			
SCALE: _____	SHEET _____	OF _____ SHEETS	STA. _____ TO STA. _____

F.A.I. RTE.	SECTION	COUNTY	TOTAL SHEETS	SHEET NO.
57	D3 I-57 PP 2020-11	IROQUOIS	11	3
CONTRACT NO. 66K90				
ILLINOIS FED. AID PROJECT				

MODEL: Default
 FILE: h:\mhc_2020\pub\haronom.dwg
 PROJECT: I-57 PP 2020-11
 OFFICE: I-57 PP 2020-11
 DATE: 3/23/2020

LOCATION	SOUTHBOUND PASSING LANE								SOUTHBOUND DRIVING LANE							
	PATCH LENGTH	CLASS A PATCHING			PATCH REINF.	EXP JT	SAW CUTS	TIE BARS 3/4"	PATCH LENGTH	CLASS A PATCHING			PATCH REINF.	EXP JT	SAW CUTS	TIE BARS 3/4"
		TYPE II 13"	TYPE III 13"	TYPE IV 13"						TYPE II 13"	TYPE III 13"	TYPE IV 13"				
MILE MARKER	FEET	SQ YD	SQ YD	SQ YD	SQ YD	FOOT	FOOT	EACH	FEET	SQ YD	SQ YD	SQ YD	SQ YD	FOOT	FOOT	EACH
301.9	6	8			8		36	42	6	8			8		36	42
299.7									6	8			8		36	42
296.2									6	8			8		36	42
295.6	6	8			8		36	42								
295.1									6	8			8		36	42
295.1									6	8			8		36	42
292.9									6	8			8		36	42
289.9	6	8			8		36	42								
289.4									24			32	32		72	54
287.3									10	13			13		44	42
283.8									6	8			8		36	42
283.8									6	8			8		36	42
283.8									6	8			8		36	42
283.3									6	8			8		36	42
283.2									6	8			8		36	42
282.5									6	8			8		36	42
282.2	12		16		16	12	48	42								
282.2									12		16		16	12	48	42
282.1	12		16		16	12	48	42								
282.0	10	13			13		44	42								
281.2									10	13			13		44	42
281.2	6	8			8		36	42	6	8			8		36	42
281.0									6	8			8		36	42
281.0									6	8			8		36	42
280.5									6	8			8		36	42
280.5									6	8			8		36	42
276.8									6	8			8		36	42
276.6									6	8			8		36	42
275.8									6	8			8		36	42
275.5									6	8			8		36	42
274.9									6	8			8		36	42
273.9	12		16		16	12	48	42	12		16		16	12	48	42
273.8									6	8			8		36	42
271.1									6	8			8		36	42
271.0									6	8			8		36	42
270.0									6	8			8		36	42
269.9									6	8			8		36	42
269.0									6	8			8		36	42
269.0									6	8			8		36	42
267.2									6	8			8		36	42
265.4									6	8			8		36	42
TOTAL		45	48		93	36	332	336		274	32	32	338	24	1372	1524

USER NAME = pletschr	DESIGNED - _____	REVISED - _____
DRAWN - _____	REVISIONS - _____	REVISIONS - _____
PLOT SCALE = 100.0000' / in.	CHECKED - _____	REVISIONS - _____
PLOT DATE = 3/23/2020	DATE - _____	REVISIONS - _____

**STATE OF ILLINOIS
 DEPARTMENT OF TRANSPORTATION**

SCHEDULES

SCALE: _____ SHEET ____ OF ____ SHEETS STA. _____ TO STA. _____

F.A.I. RTE.	SECTION	COUNTY	TOTAL SHEETS	SHEET NO.
57	D3 I-57 PP 2020-11	IROQUOIS	11	6
ILLINOIS FED. AID PROJECT			CONTRACT NO. 66K90	

SCHEDULE - PAVEMENT MARKING NORTHBOUND LANES			
LOCATION	POLYUREA PAVEMENT MARKING TYPE I LINE 4"		POLYUREA PAVEMENT MARKING TYPE I LINE 6"
	FEET		FEET
MILE POST	YELLOW (PL)	WHITE (DL)	WHITE (CL)
269.30		6	10
271.70		6	10
271.70	6		10
276.60		6	10
276.70		6	10
277.40		6	10
279.40		6	10
279.60		6	10
280.10	6		10
280.50		6	10
282.60		6	10
284.50		6	10
285.00		6	10
285.00		6	10
285.00		6	10
285.10		6	10
285.40		6	10
286.60	12		10
286.60		12	10
287.20	6		10
287.70		6	10
287.90		6	10
288.20		6	10
288.20		10	10
288.20		6	10
289.30	6		10
290.30		6	10
291.50		6	10
292.10	6		10
292.30		6	10
SUBTOTAL	42	154	
TOTAL		196	300

SCHEDULE - PAVEMENT MARKING SOUTHBOUND LANES			
LOCATION	POLYUREA PAVEMENT MARKING TYPE I LINE 4"		POLYUREA PAVEMENT MARKING TYPE I LINE 6"
	FEET		FEET
MILE POST	YELLOW (PL)	WHITE (DL)	WHITE (CL)
301.90	6	6	10
299.70		6	10
296.20		6	10
295.60	6		10
295.10		6	10
295.10		6	10
292.90		6	10
289.90	6		10
289.40		24	10
287.30		10	10
283.80		6	10
283.80		6	10
283.80		6	10
283.30		6	10
283.20		6	10
282.50		6	10
282.20	12		10
282.20		12	10
282.10	12		10
282.00	10		10
281.20		10	10
281.20	6	6	10
281.00		6	10
281.00		6	10
280.50		6	10
280.50		6	10
276.80		6	10
276.60		6	10
275.80		6	10
275.50		6	10
274.90		6	10
273.90	12	12	10
273.80		6	10
271.10		6	10
271.00		6	10
270.00		6	10
269.90		6	10
269.00		6	10
269.00		6	10
267.20		6	10
265.40		6	10
SUBTOTAL	52	178	
TOTAL		230	410

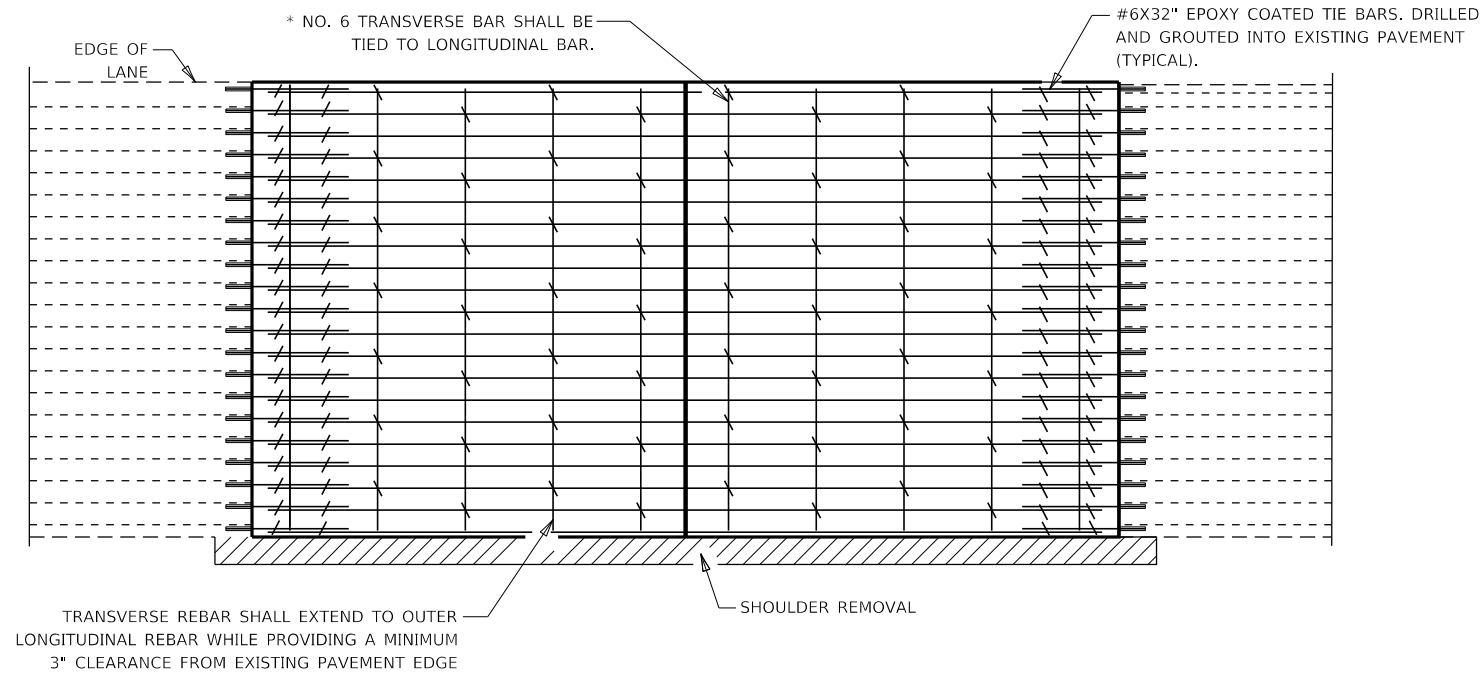
MODEL: Default
 FILE: Model: P:\pub\baronm.dwg
 PROJECT: I:\Projects\66699\CADD\Drawings\DOT - Offices\Detail.dwg
 3/23/2020

USER NAME = pltschtr	DESIGNED - _____	REVISED - _____
	DRAWN - _____	REVISED - _____
PLOT SCALE = 100.0000' / in.	CHECKED - _____	REVISED - _____
PLOT DATE = 3/23/2020	DATE - _____	REVISED - _____

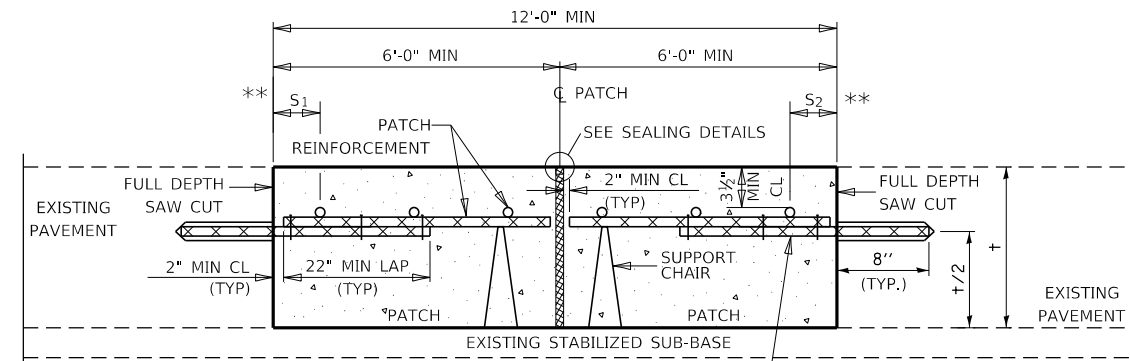
STATE OF ILLINOIS
DEPARTMENT OF TRANSPORTATION

SCHEDULES	
SCALE: _____	SHEET ____ OF ____ SHEETS STA. _____ TO STA. _____

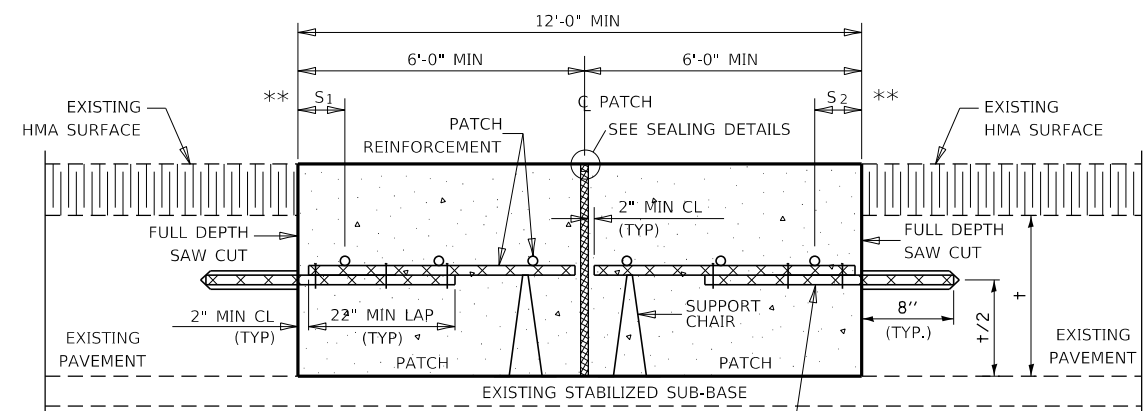
F.A.I. RTE.	SECTION	COUNTY	TOTAL SHEETS	SHEET NO.
57	D3 I-57 PP 2020-11	IROQUOIS	11	7
			CONTRACT NO. 66K90	
ILLINOIS FED. AID PROJECT				



PAVEMENT REINFORCEMENT DETAIL

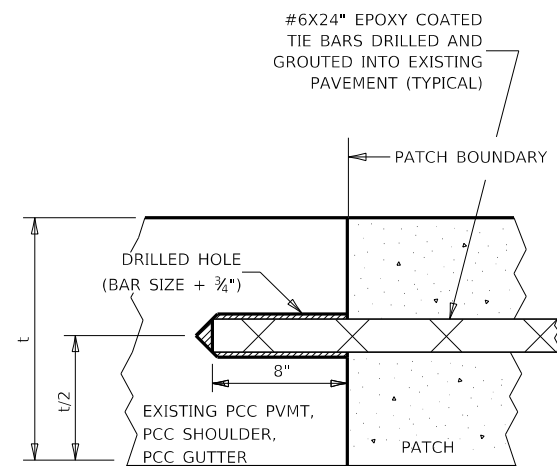


WITHOUT HMA OVERLAY



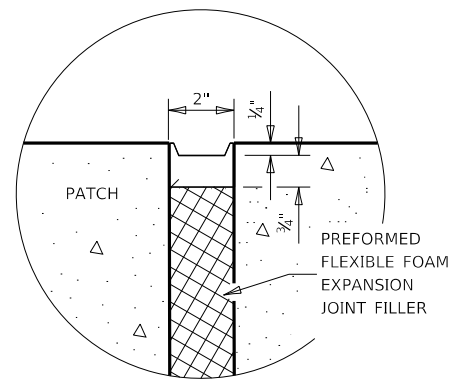
WITH HMA OVERLAY

CLASS A PATCH WITH EXPANSION JOINT

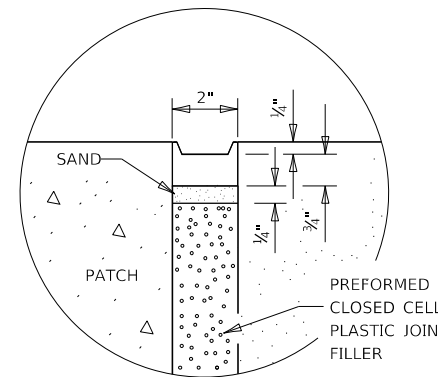


LONGITUDINAL CONSTRUCTION JOINT

PATCHES MORE THAN 20' IN LENGTH SHALL BE TIED TO ADJACENT PAVEMENT, PCC SHOULDERS OR PCC CURB AND GUTTER WITH #6x24" EPOXY COATED TIE BARS AT 36" CENTERS.



SEALING DETAIL



SEALING DETAIL

NOTES:

◀EXISTING LONGITUDINAL REINFORCEMENT SPACING; ±6".

SPACING OF NEW LONGITUDINAL REINFORCEMENT AND NEW LONGITUDINAL TIE BARS SHALL MATCH SPACING OF EXISTING REINFORCEMENT AND SHALL BE TIED TOGETHER WITH A MINIMUM OF TWO TIES PER BAR.

* EVERY THIRD INTERSECTION MUST BE TIED. WHEN THE MINIMUM CLEARANCE CANNOT BE OBTAINED WITH THE TRANSVERSE REBAR ON TOP, THEN THE TRANSVERSE REBAR SHALL BE TIED TO THE BOTTOM OF THE LONGITUDINAL REBAR.

** VARIABLE: WHERE S₁ AND S₂ ARE 2½" MIN. AND 12" MAX.

MODEL: Default
FILE: \\nrcs\p\pub\baroncom.dta\illinois.gov\PWIDOT\Documents\DOT - Office\Detail\ 2\Project\0366K90\CADD\0366K90-01r-detail.dgn

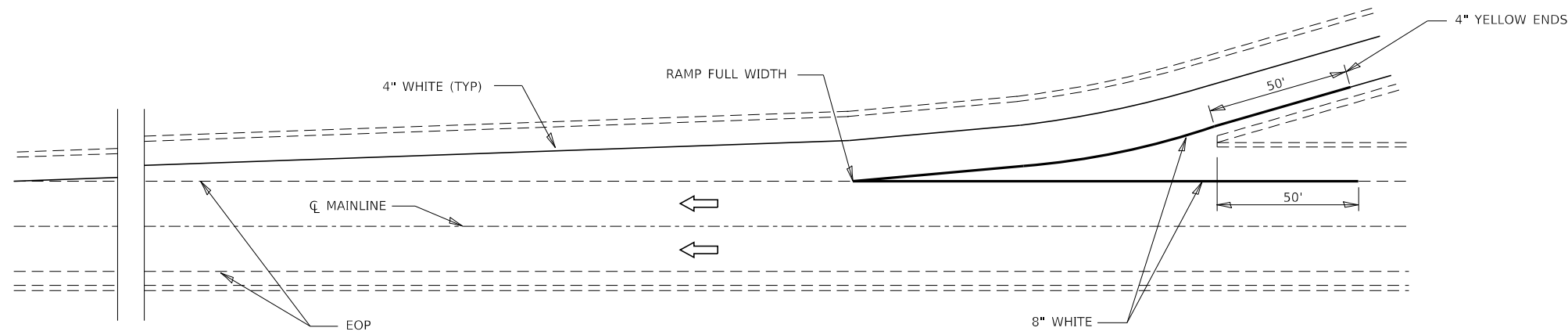
USER NAME = pletschr	DESIGNED - _____	REVISED - _____
DRAWN - _____	REVISED - _____	
PLOT SCALE = 100,0000' / in.	CHECKED - _____	REVISED - _____
PLOT DATE = 3/23/2020	DATE - _____	REVISED - _____

**STATE OF ILLINOIS
DEPARTMENT OF TRANSPORTATION**

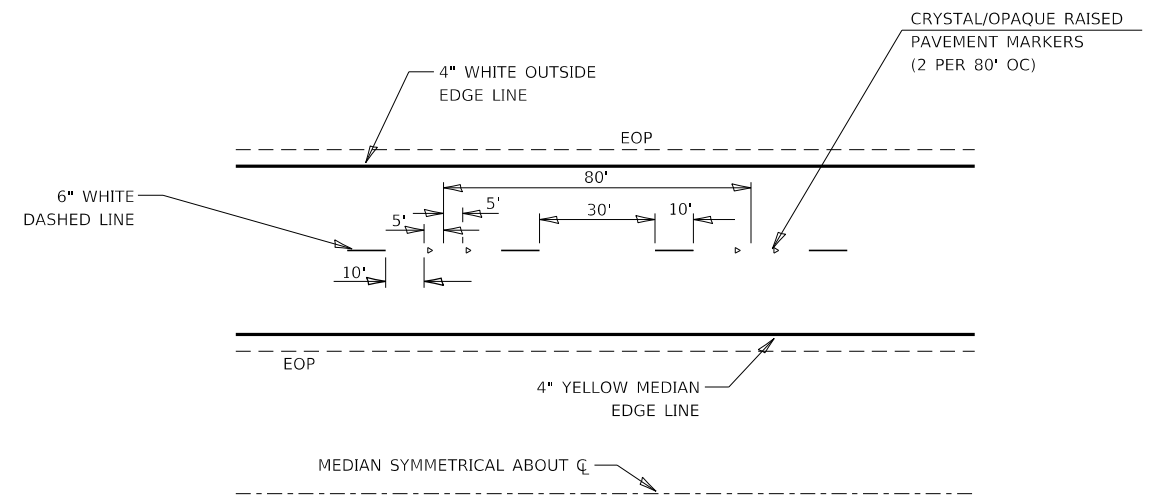
CLASS A PATCHING DETAILS

SCALE: _____ SHEET _____ OF _____ SHEETS STA. _____ TO STA. _____

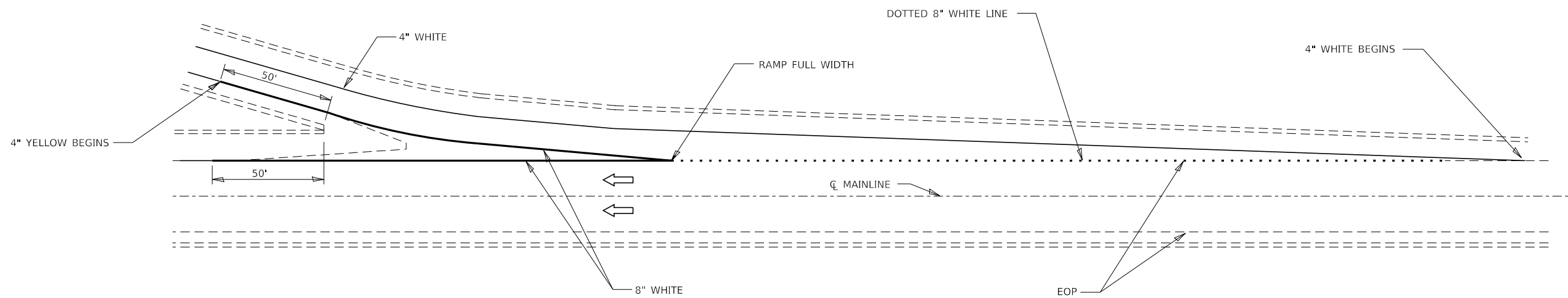
F.A.I. RTE.	SECTION	COUNTY	TOTAL SHEETS	SHEET NO.
57	D3 I-57 PP 2020-11	IROQUOIS	11	10
			CONTRACT NO. 66K90	
ILLINOIS FED. AID PROJECT				



TYPICAL PAVEMENT MARKING FOR ENTRANCE RAMP TERMINALS



TYPICAL PAVEMENT MARKINGS



TYPICAL PAVEMENT MARKINGS FOR EXIT RAMP TERMINALS

MODEL: Default
 FILE: \\nlsr01\pub\baronm.dwg
 PROJECT: \\nlsr01\pub\baronm.dwg
 OFFICE: \\nlsr01\pub\baronm.dwg
 DATE: 3/23/2020

USER NAME = pltschtr	DESIGNED - _____	REVISED - _____
DRAWN - _____	REVISIONS - _____	
PLOT SCALE = 100.0000' / in.	CHECKED - _____	REVISED - _____
PLOT DATE = 3/23/2020	DATE - _____	REVISED - _____

**STATE OF ILLINOIS
DEPARTMENT OF TRANSPORTATION**

PAVEMENT MARKING DETAILS

SCALE: _____ SHEET ____ OF ____ SHEETS STA. _____ TO STA. _____

F.A.I. RTE.	SECTION	COUNTY	TOTAL SHEETS	SHEET NO.
57	D3 I-57 PP 2020-11	IROQUOIS	11	11
CONTRACT NO. 66K90				
ILLINOIS FED. AID PROJECT				