

STATE OF ILLINOIS
DEPARTMENT OF TRANSPORTATION

F.A. RTE	SECTION	COUNTY	TOTAL SHEETS	SHEET NO.
VAR	D4 RIVER GAUGE CLEARANCE SIGN 2020	VARIES	17	1
ILLINOIS			CONTRACT NO. 68F40	

D-94-030-20

INDEX OF SHEETS

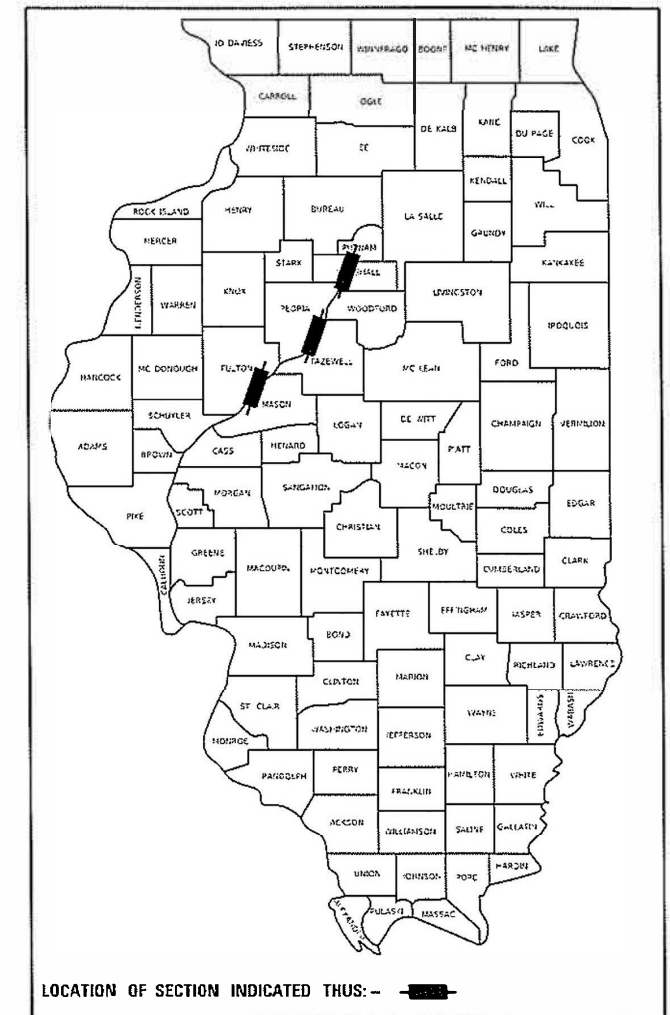
- 1. COVER
- 2. GENERAL NOTES
- 3. SUMMARY OF QUANTITIES
- 4. SCHEDULE OF QUANTITIES
- 5-10. SIGNING LAYOUT
- 11. SIGNING DETAIL
- 12-17. FOR INFORMATION ONLY

PROPOSED
HIGHWAY PLANS

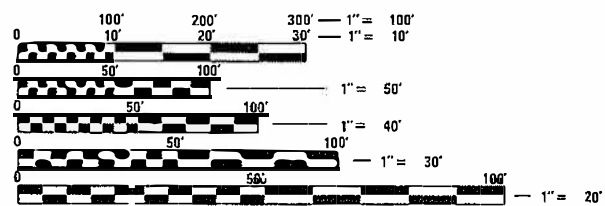
ROUTE: VARIOUS
SECTION: D4 RIVER GAUGE CLEARANCE SIGN 2020
CONTRACT MAINTENANCE
COUNTY: VARIOUS
C-94-043-20

LIST OF ILLINOIS DOT HIGHWAY STANDARDS

NONE



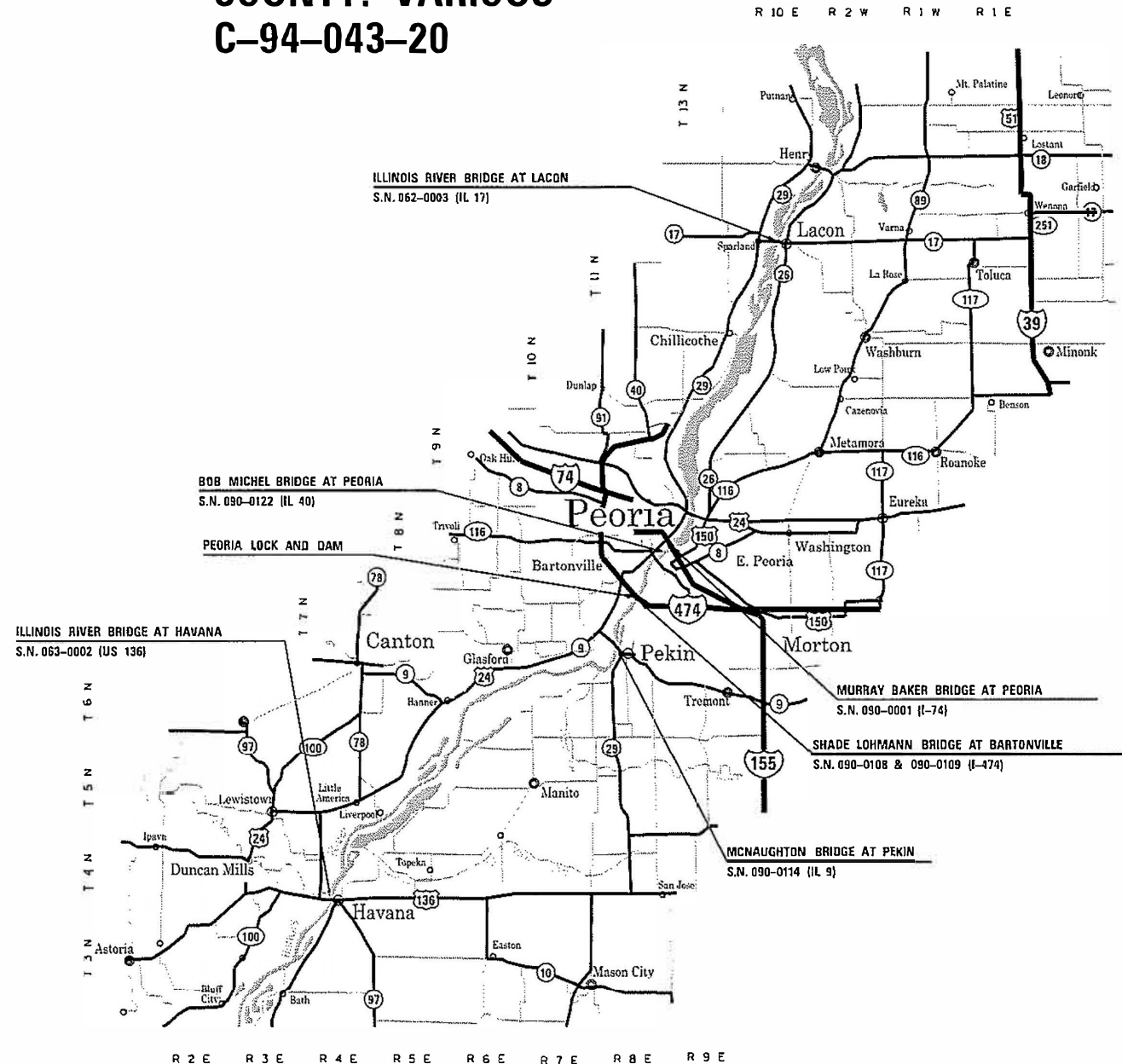
PROJECT SCOPE: REPLACE RIVER CLEARANCE GAUGE SIGNAGE ON THE FOLLOWING ILLINOIS RIVER BRIDGES: S.N. 063-0002 (US 136), S.N. 090-0114 (IL 9), S.N. 090-0108 & 090-0109 (I-474), S.N. 090-0122 (IL 40), S.N. 090-0001 (I-74), S.N. 062-0003 (IL 17).



FULL SIZE PLANS HAVE BEEN PREPARED USING STANDARD ENGINEERING SCALES. REDUCED SIZED PLANS WILL NOT CONFORM TO STANDARD SCALES. IN MAKING MEASUREMENTS ON REDUCED PLANS, THE ABOVE SCALES MAY BE USED.

J.U.L.I.E.
JOINT UTILITY LOCATION INFORMATION FOR EXCAVATORS
1-800-892-0123
OR 811

PROJECT ENGINEER: NICK JACK
DESIGNER: JOSH JOCHUMS
CATALOG NO. 036016-00D
CONTRACT NO. 68F40



STATE OF ILLINOIS
DEPARTMENT OF TRANSPORTATION

SUBMITTED Mar 24 20 20
Kenneth A. Bennett RSD
REGIONAL ENGINEER

May 8, 2020 [Signature]
ENGINEER OF DESIGN AND ENVIRONMENT

May 8, 2020 [Signature]
DIRECTOR OF HIGHWAYS PROJECT IMPLEMENTATION

PRINTED BY THE AUTHORITY
OF THE STATE OF ILLINOIS

GENERAL NOTES

PLAN ELEVATIONS – U.S.G.S. MEAN SEA LEVEL DATUM

All elevations shown on the plans are established from U.S.G.S. mean sea level datum.

MODEL Default
FILE Name: S:\GENDRAFTM\JACKSON\Design\68F40_Navigation_Clearance_Signs\Microstation\Drafting_File.dgn

USER NAME = jochumsjg	DESIGNED -	REVISED -
	DRAWN -	REVISED -
PLOT SCALE = 100.0000 ' / in.	CHECKED -	REVISED -
PLOT DATE = 3/20/2020	DATE -	REVISED -

**STATE OF ILLINOIS
DEPARTMENT OF TRANSPORTATION**

GENERAL NOTES

SCALE: SHEET OF SHEETS STA. TO STA.

F.A. RTE.	SECTION	COUNTY	TOTAL SHEETS	SHEET NO.
VAR	04 RIVER GAUGE CLEARANCE SIGN 2020	VARIABLE	17	2
			CONTRACT NO. 68F40	
		ILLINOIS	FED. AID PROJECT	



PIER 6 LOOKING DOWNSTREAM



PIER 7 LOOKING UPSTREAM

PAY ITEM	DESCRIPTION	QUANTITY
72000200	SIGN PANEL-TYPE 2	80 SF

PAY ITEM	DESCRIPTION	QUANTITY
72000200	SIGN PANEL-TYPE 2	80 SF

MODEL: Default
 FILE NAME: S:\GEN\DRAWING\JACKSON\Design\68F40_Navigation_Clearance_Signs\Microstation\Drafting_File.dgn

USER NAME = jochumsjg	DESIGNED -	REVISED -
	DRAWN -	REVISED -
PLOT SCALE = 100.0000' / in.	CHECKED -	REVISED -
PLOT DATE = 3/20/2020	DATE -	REVISED -

STATE OF ILLINOIS
DEPARTMENT OF TRANSPORTATION

SIGNING LAYOUT			
S.N. 063-0002 (US 136)			
SCALE:	SHEET	OF SHEETS	STA. TO STA.

F.A. RTE.	SECTION	COUNTY	TOTAL SHEETS	SHEET NO.
VAR	D4 RIVER GAUGE CLEARANCE SIGN 2020	VARIES	17	5
			CONTRACT NO. 68F40	
ILLINOIS FED. AID PROJECT				



PIER 7 LOOKING DOWNSTREAM

NOTES:

1. CENTER SIGNS ON EXISTING 5 FOOT MARKS
2. REMOVE PORTIONS OF EXISTING PAINTED NUMBERS SHOWING ABOVE NEW SIGN EDGES. THE COST OF THIS REMOVAL SHALL BE INCLUDED IN THE COST OF SIGN PANEL-TYPE 2.

PAY ITEM	DESCRIPTION	QUANTITY
72000200	SIGN PANEL-TYPE 2	80 SF



PIER 8 LOOKING UPSTREAM

NOTES:

1. CENTER SIGNS ON EXISTING 5 FOOT MARKS
2. REMOVE PORTIONS OF EXISTING PAINTED NUMBERS SHOWING ABOVE NEW SIGN EDGES. THE COST OF THIS REMOVAL SHALL BE INCLUDED IN THE COST OF SIGN PANEL-TYPE 2.

PAY ITEM	DESCRIPTION	QUANTITY
72000200	SIGN PANEL-TYPE 2	80 SF

MODEL Default
 FILE NAME: S:\GEN\DRAWING\JACKSON\Design\68F40_Navigation_Clearance_Signs\Microstation\Drafting_File.dgn

USER NAME = jochumsjg	DESIGNED -	REVISED -
	DRAWN -	REVISED -
PLOT SCALE = 100.0000 ' / in.	CHECKED -	REVISED -
PLOT DATE = 3/20/2020	DATE -	REVISED -

**STATE OF ILLINOIS
DEPARTMENT OF TRANSPORTATION**

**SIGNING LAYOUT
S.N. 090-0114 (IL 9)**

SCALE: SHEET OF SHEETS STA. TO STA.

F.A. RTE.	SECTION	COUNTY	TOTAL SHEETS	SHEET NO.
VAR	D4 RIVER GAUGE CLEARANCE SIGN 2020	VARIABLE	17	6
			CONTRACT NO. 68F40	
			ILLINOIS FED. AID PROJECT	



PIER 9 LOOKING DOWNSTREAM

NOTES:

THE 40 AND 45 SIGNS SHALL BE MOUNTED DIRECTLY TO THE END OF THE PIER AND LOCATED VERTICALLY BY MEASURING DIRECTLY FROM THE BOTTOM CHORD OF THE TRUSS.

THE 50 AND 55 SIGNS CAN BE MOUNTED TO THE FACE OF THE EXISTING LARGE METAL 50 / 60 SIGN. SUBSEQUENTLY THE CONTRACTOR SHALL THEN REMOVE THE EXPOSED EXISTING MARKINGS. ALTERNATIVELY, THE EXISTING 50 / 60 SIGN CAN BE REMOVED IN ORDER TO USE THE UNDERLYING STEEL FRAMEWORK TO MOUNT THE NEW SIGNS. IN EITHER METHOD, CARE SHOULD BE TAKEN TO UTILIZE THE VERTICAL REFERENCE OF THE EXISTING MAIN FOOT MARKS WHEN ORIENTING THE NEW SIGNS.

PAY ITEM	DESCRIPTION	QUANTITY
72000200	SIGN PANEL-TYPE 2	80 SF



PIER 10 LOOKING UPSTREAM

NOTES:

THE 40 AND 45 SIGNS SHALL BE MOUNTED DIRECTLY TO THE END OF THE PIER AND LOCATED VERTICALLY BY MEASURING DIRECTLY FROM THE BOTTOM CHORD OF THE TRUSS.

THE 50 AND 55 SIGNS CAN BE MOUNTED TO THE FACE OF THE EXISTING LARGE METAL 50 / 60 SIGN. SUBSEQUENTLY THE CONTRACTOR SHALL THEN REMOVE THE EXPOSED EXISTING MARKINGS. ALTERNATIVELY, THE EXISTING 50 / 60 SIGN CAN BE REMOVED IN ORDER TO USE THE UNDERLYING STEEL FRAMEWORK TO MOUNT THE NEW SIGNS. IN EITHER METHOD, CARE SHOULD BE TAKEN TO UTILIZE THE VERTICAL REFERENCE OF THE EXISTING MAIN FOOT MARKS WHEN ORIENTING THE NEW SIGNS.

PAY ITEM	DESCRIPTION	QUANTITY
72000200	SIGN PANEL-TYPE 2	80 SF

MODEL: Default
 FILE NAME: S:\GEN\DRAWING\JACK\DESIGN\DESIGN\68F40_Navigation_Clearance_Signs\Microstation\Drawing_File.dgn

USER NAME = jochumsjg	DESIGNED -	REVISED -
	DRAWN -	REVISED -
PLOT SCALE = 100.0000' / in.	CHECKED -	REVISED -
PLOT DATE = 3/20/2020	DATE -	REVISED -

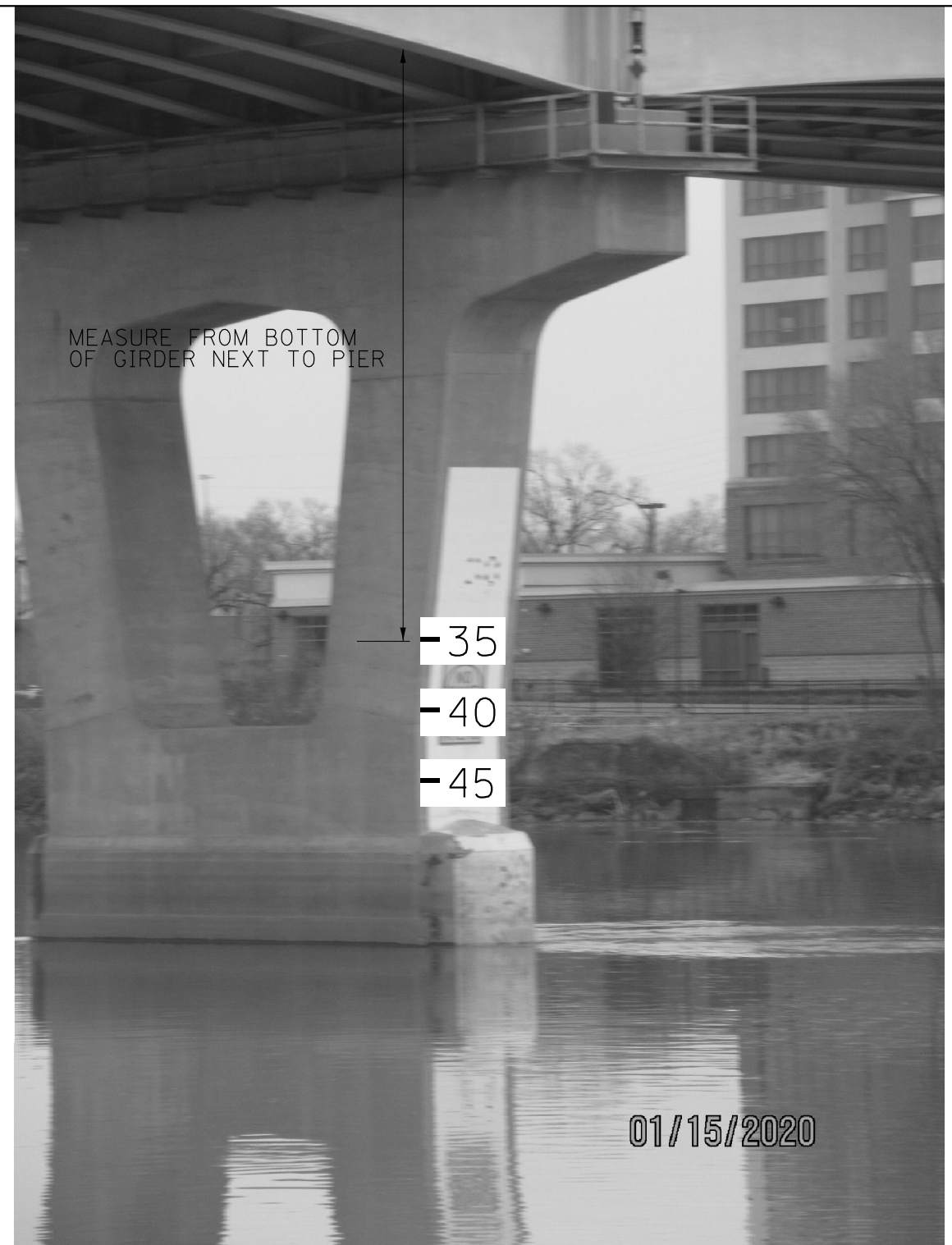
**STATE OF ILLINOIS
DEPARTMENT OF TRANSPORTATION**

SIGNING LAYOUT			
S.N. 090-0108 & 090-0109 (I-474)			
SCALE:	SHEET	OF	SHEETS
	STA.	TO	STA.

F.A. RTE.	SECTION	COUNTY	TOTAL SHEETS	SHEET NO.
VAR	D4 RIVER GAUGE CLEARANCE SIGN 2020	VARIES	17	7
			CONTRACT NO. 68F40	
		ILLINOIS FED. AID PROJECT		



PIER 7 LOOKING DOWNSTREAM



PIER 8 LOOKING UPSTREAM

NOTES:

1. RELOCATE NO WAKE ZONE SIGNS ABOVE "35" SIGN. COST INCIDENTAL TO SIGN PANEL-TYPE 2.

PAY ITEM	DESCRIPTION	QUANTITY
72000200	SIGN PANEL-TYPE 2	60 SF

PAY ITEM	DESCRIPTION	QUANTITY
72000200	SIGN PANEL-TYPE 2	60 SF

MODEL: Default
 FILE NAME: S:\GEN\DRAWING\JACK\DESIGN\DESIGN\68F40_Navigation_Clearance_Signs\MicrostationDrawing_File.dgn

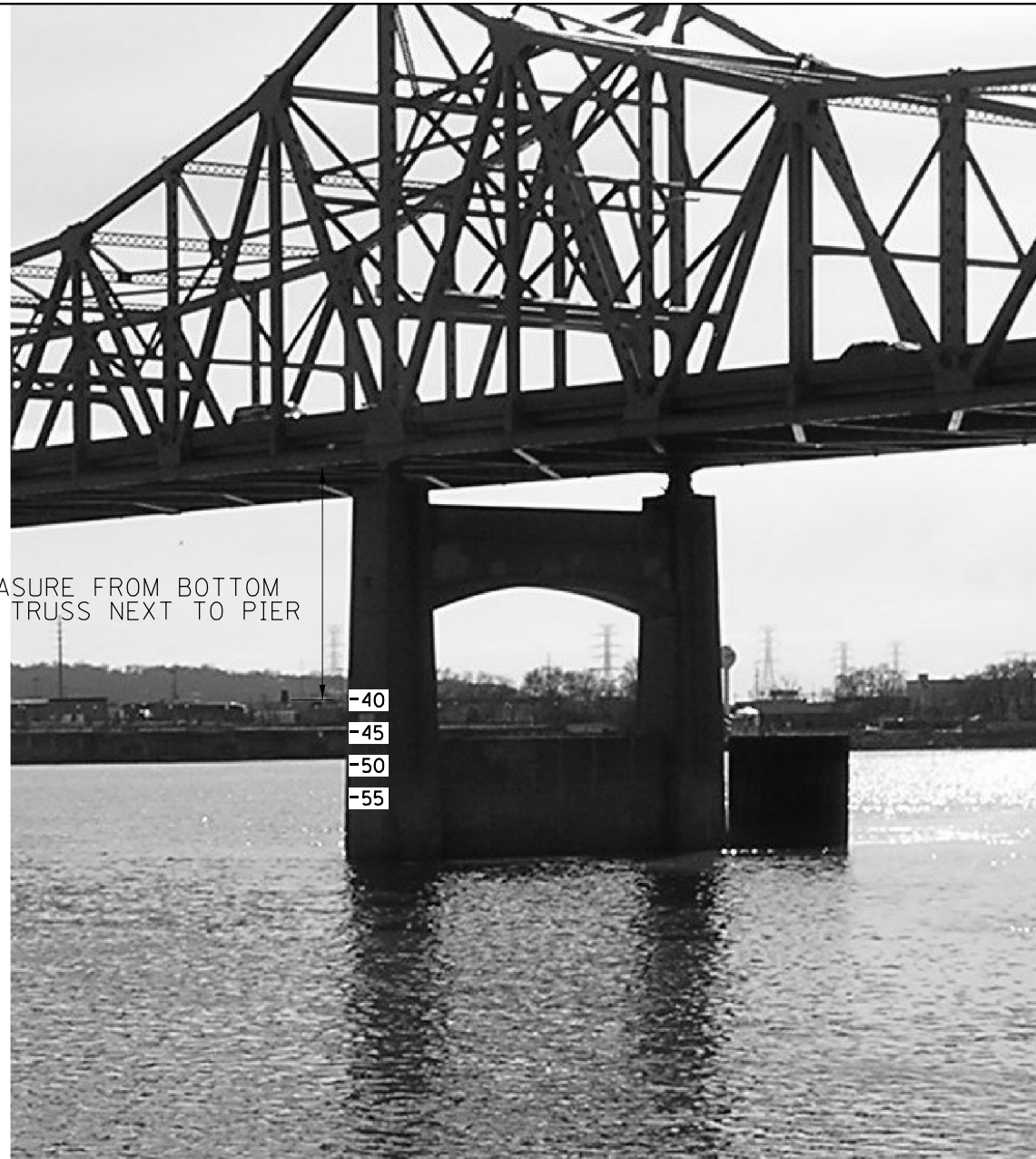
USER NAME = jochumsjg	DESIGNED -	REVISED -
	DRAWN -	REVISED -
PLOT SCALE = 100.0000' / in.	CHECKED -	REVISED -
PLOT DATE = 3/20/2020	DATE -	REVISED -

**STATE OF ILLINOIS
DEPARTMENT OF TRANSPORTATION**

**SIGNING LAYOUT
S.N. 090-0122 (IL 40)**

SCALE: SHEET OF SHEETS STA. TO STA.

F.A. RTE.	SECTION	COUNTY	TOTAL SHEETS	SHEET NO.
VAR 04 RIVER GAUGE CLEARANCE SIGN 2020		VARIABLES	17	8
ILLINOIS FED. AID PROJECT			CONTRACT NO. 68F40	



MEASURE FROM BOTTOM OF TRUSS NEXT TO PIER

-40
-45
-50
-55

PIER 5 LOOKING DOWNSTREAM

PAY ITEM	DESCRIPTION	QUANTITY
72000200	SIGN PANEL-TYPE 2	80 SF



MEASURE FROM BOTTOM OF TRUSS NEXT TO PIER

-40
-45
-50
-55

PIER 6 LOOKING UPSTREAM

PAY ITEM	DESCRIPTION	QUANTITY
72000200	SIGN PANEL-TYPE 2	80 SF

MODEL: Default
FILE NAME: S:\GEN\DRAWING\JACKSON\Design\68F40_Navigation_Clearance_Signs\Microstation\Drafting_File.dgn

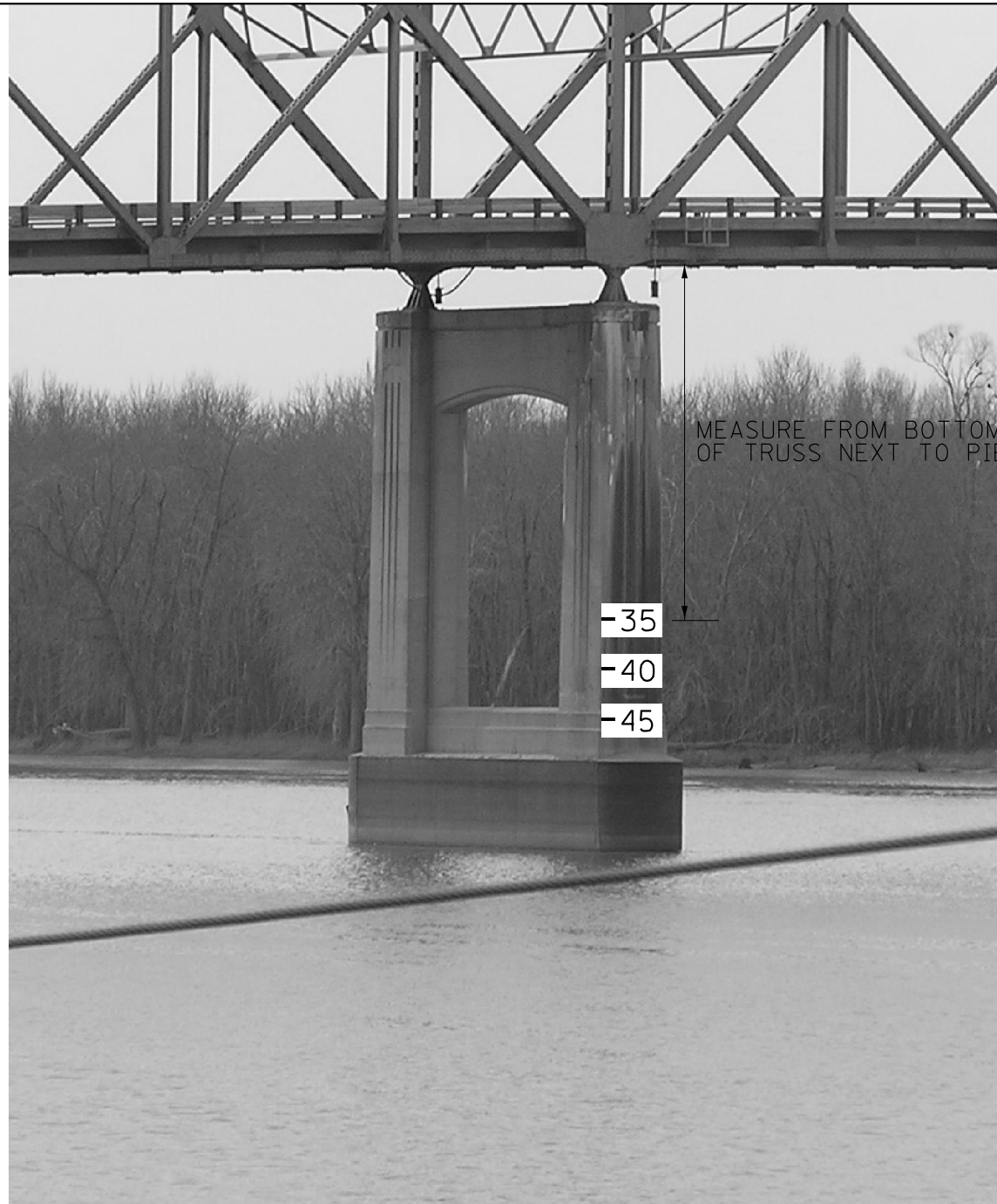
USER NAME = jochumsjg	DESIGNED -	REVISED -
	DRAWN -	REVISED -
PLOT SCALE = 100.0000 ' / in.	CHECKED -	REVISED -
PLOT DATE = 3/20/2020	DATE -	REVISED -

**STATE OF ILLINOIS
DEPARTMENT OF TRANSPORTATION**

**SIGNING LAYOUT
S.N. 090-0001 (I-74)**

SCALE: SHEET OF SHEETS STA. TO STA.

F.A. RTE.	SECTION	COUNTY	TOTAL SHEETS	SHEET NO.
VAR 04 RIVER GAUGE CLEARANCE SIGN 2020		VARIES	17	9
ILLINOIS FED. AID PROJECT			CONTRACT NO. 68F40	



PIER 5 LOOKING DOWNSTREAM

PAY ITEM	DESCRIPTION	QUANTITY
72000200	SIGN PANEL-TYPE 2	60 SF



PIER 6 LOOKING UPSTREAM

PAY ITEM	DESCRIPTION	QUANTITY
72000200	SIGN PANEL-TYPE 2	60 SF

MODEL: Default
FILE NAME: S:\GEN\DRAWING\JACKSON\Design\68F40_Navigation_Clearance_Signs\Microstation\Drafting_File.dgn

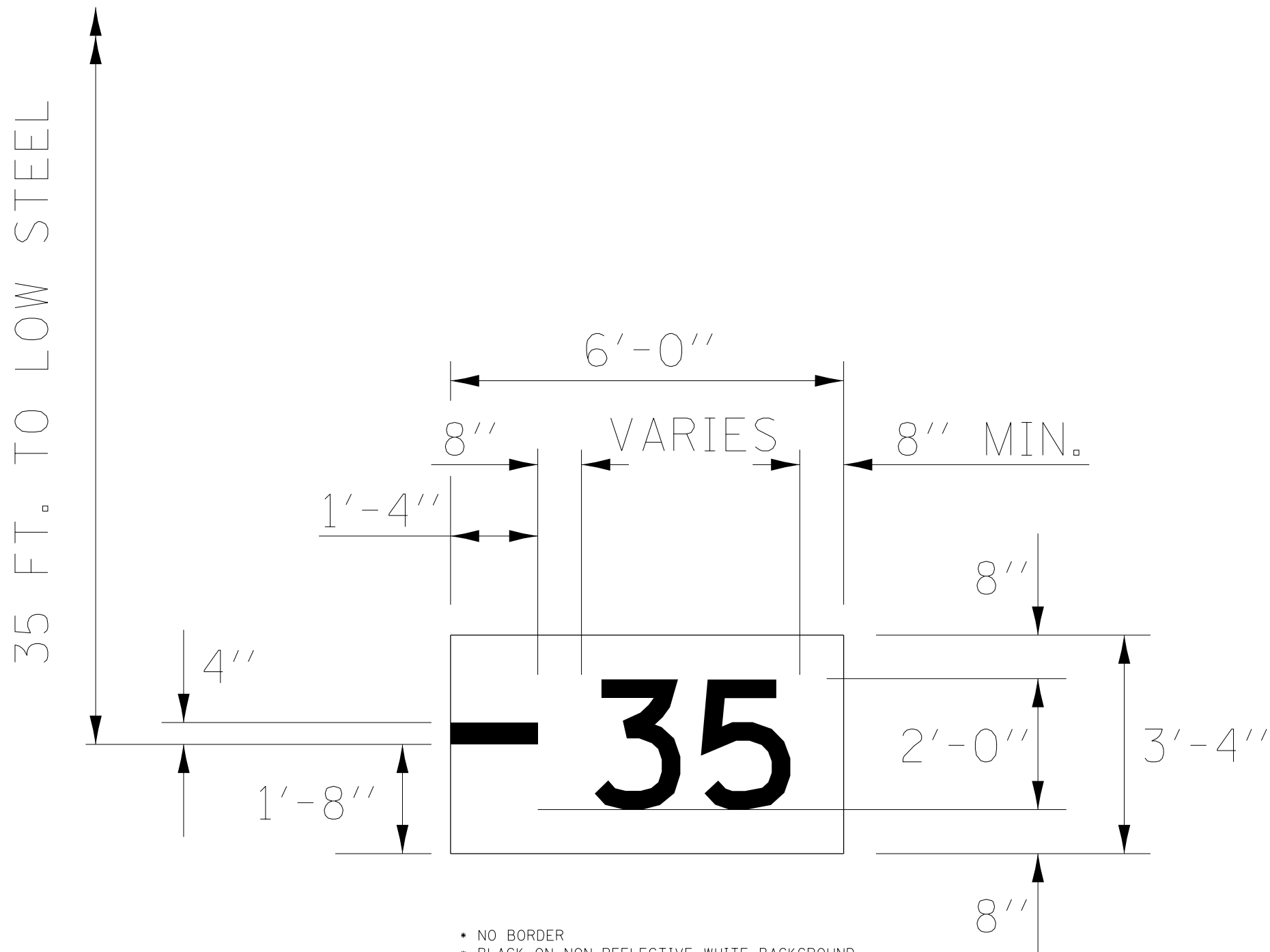
USER NAME = jochumsjg	DESIGNED -	REVISED -
	DRAWN -	REVISED -
PLOT SCALE = 100.0000' / in.	CHECKED -	REVISED -
PLOT DATE = 3/20/2020	DATE -	REVISED -

**STATE OF ILLINOIS
DEPARTMENT OF TRANSPORTATION**

**SIGNING LAYOUT
S.N. 062-0003 (IL 17)**

SCALE: SHEET OF SHEETS STA. TO STA.

F.A. RTE.	SECTION	COUNTY	TOTAL SHEETS	SHEET NO.
VAR	D4 RIVER GAUGE CLEARANCE SIGN 2020	VARIES	17	10
			CONTRACT NO. 68F40	
		ILLINOIS	FED. AID PROJECT	



NOTES:

- NUMERALS SHALL BE SERIES D 2000, 24 INCHES AND SPACING SHALL CONFORM TO THE REQUIREMENTS SPECIFIED IN THE "STANDARD ALPHABETS FOR HIGHWAY SIGNS" PUBLISHED BY THE US DEPARTMENT OF TRANSPORTATION.

- * NO BORDER
- * BLACK ON NON-REFLECTIVE WHITE BACKGROUND

MODEL Default
 FILE Name: S:\GEN\DRAWING\JACKSON\Design\68F40_Navigation_Clearance_Signs\Microstation\Drawing_File.dgn

USER NAME = jochumsjg	DESIGNED -	REVISED -
	DRAWN -	REVISED -
PLOT SCALE = 100.0000 ' / in.	CHECKED -	REVISED -
PLOT DATE = 3/20/2020	DATE -	REVISED -

STATE OF ILLINOIS
DEPARTMENT OF TRANSPORTATION

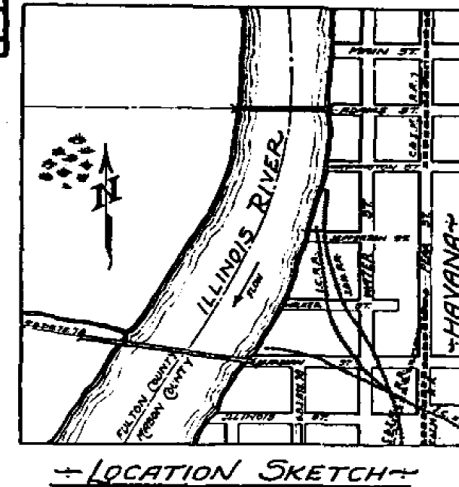
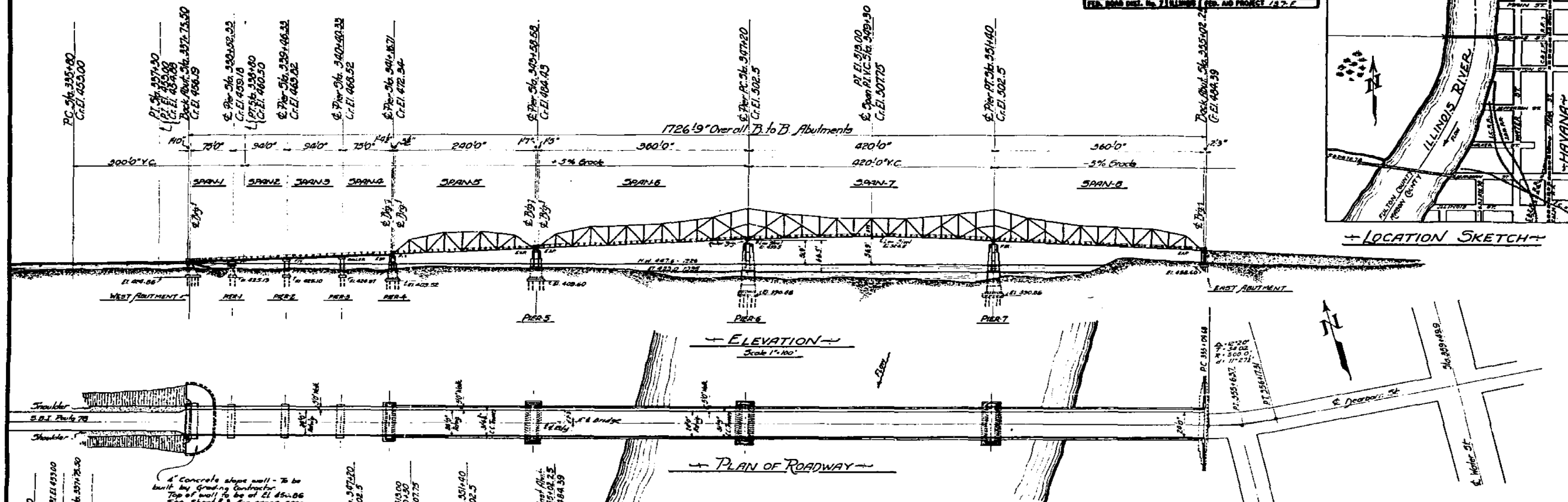
SIGNING DETAIL			
SCALE:	SHEET	OF	SHEETS
	STA.		TO STA.

F.A. RTE.	SECTION	COUNTY	TOTAL SHEETS	SHEET NO.
VAR 04 RIVER GAUGE CLEARANCE SIGN 2020			17	11
			CONTRACT NO. 68F40	
		ILLINOIS	FED. AID PROJECT	

B.M. 62 - S.W. Vertical in 18' Elm - 100' Lt. Sta. 556+15
 Elevation 467.08 - U.S.G.S. (1929) Datum
 B.M. 61 - S.W. Horiz. in Power Pole 4-100' Lt. Sta. 344+50
 Elevation 442.40 - U.S.G.S. (1929) Datum

STATE OF ILLINOIS
 DEPARTMENT OF PUBLIC WORKS & BUILDINGS
 DIVISION OF HIGHWAYS

SEC. COUNTY	140-B	140-B	140-B	140-B	140-B	140-B	140-B	140-B	140-B
FED. ROAD DIST. No.	70	70	70	70	70	70	70	70	70
FED. AID PROJECT	117-1330	117-1330	117-1330	117-1330	117-1330	117-1330	117-1330	117-1330	117-1330



TOTAL BILL OF MATERIAL

ITEMS	SUPER-STRUCT	ABUTMENTS	PIERS	APPROACHES	TOTAL
CLASS 'X' CONCRETE CU. YDS.		346.6	505.1		540.7
CLASS 'A' CONCRETE SEALCOAT CU. YDS.			683	682	683
REINFORCING STEEL LBS.	30170		260980		291150
STRUCT. STEEL * LBS.			39120		39120
UNTR. PILING (UP TO 20') LIN. FT.		800	2164	100	2264
CREO. PILING (UP TO 20') LIN. FT.		2660			2660
CONDUITS COMPLETE EACH		1			1
9" CORR. METAL PIPE (PERF.) LIN. FT.		100			100
TEST PILES EACH		6	15		21
CLASS 'X' CONCRETE CU. YDS.	838.5	11.0		239.5	1089.0
REINFORCING STEEL LBS.	235120			70650	305770
STRUCT. STEEL CARBON LBS.	2000	380		240	2620
C.I. Frames, Grates and Inlets LBS.	16460			2850	19310
P.C. PAVT. 18'-10 1/2" 16 1/2" SQ. YDS.				484	484
STD. TYPE 'B' GUTTER - LIN. FT.				20	20
BORROW CU. YDS.	±100				±100
WIRE MESH - SQ. FT.		10.5		1270	1280.5
HOLLOW BUILDING TILE - SQ. FT.		3.0		1356	1364
STRUCT. STEEL (CARBON) LBS.	2616610			338690	2955300
STRUCT. STEEL SILICON LBS.	562520				562520
CAST STEEL SHOES LBS.	34550				34550
NAME PLATES EACH					1
STRUCT. STEEL (CARBON) LBS.	2616610			338690	2955300
STRUCT. STEEL SILICON LBS.	562520				562520
CAST STEEL SHOES LBS.	34550				34550
LIGHTING SYSTEM COMPLETE					1
2 FIELD COATS OF PAINT - LBS. OF STEEL	3179120			332690	3511810

INCLUDE IN GRADING CONTRACT -
 APPROX. QUANTITIES FOR
 4" CONCRETE SLOPE WALL

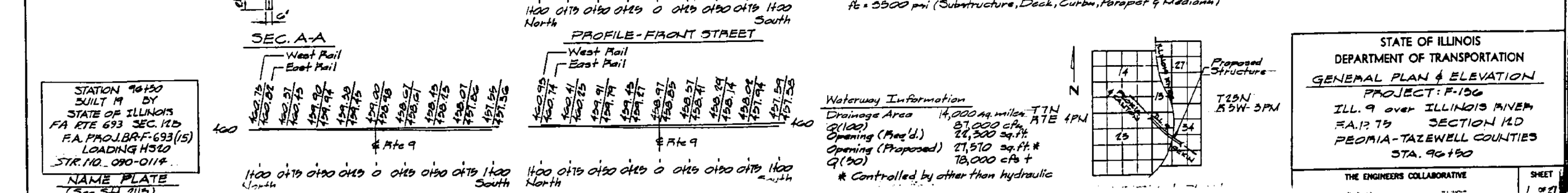
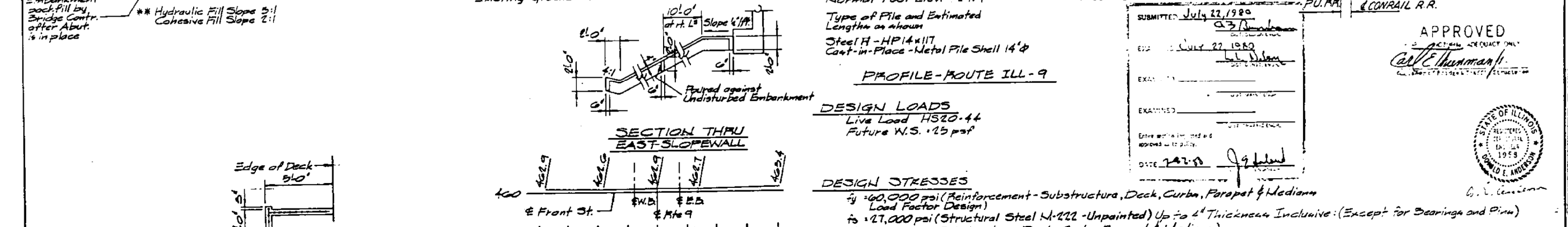
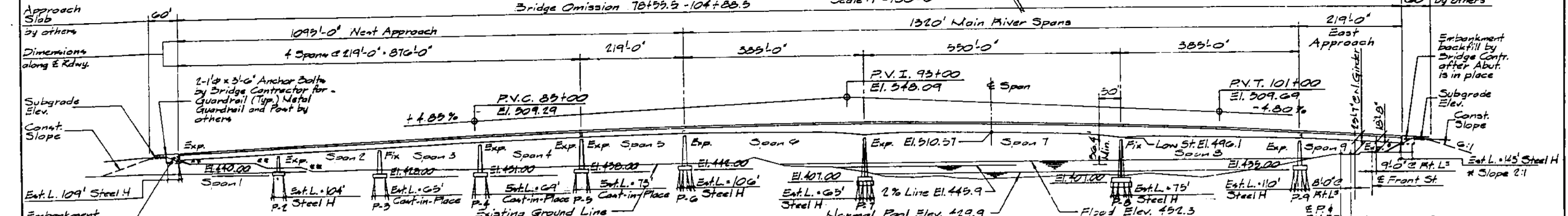
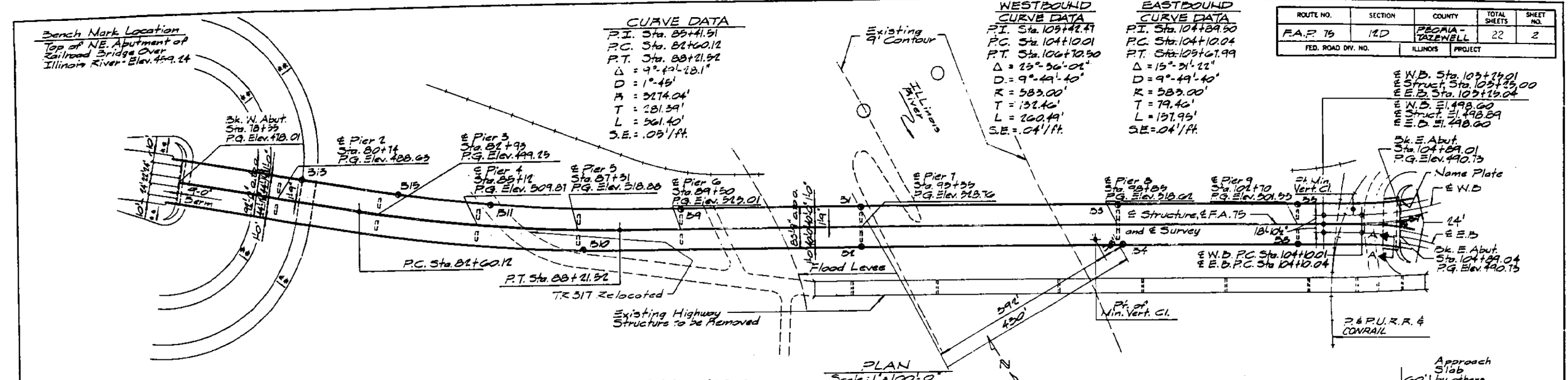
4" Concrete Wall - Sq. Yds. - 550.
 Wire Mesh - Sq. Ft. - 4950.

* Structural Steel in Sec. 140-B
 includes wrought iron ice breakers.
 + Struct. Steel Sec. 140-D Erect. Only.

STANDARD	COMPUTED BY: J.C.H.	EXAMINED: Sept 16 1935
	CHECKED: R.M.L.T.	DESIGNED: G.T. Burch
	DRAWN: A.D. Howe	PASSED: H. J. ...
SPECIAL	CHECKED: R.M.L.T.	APPROVED: ...
	THICKED: P.H. ...	
	CHECKED: R.M.L.T.	

GENERAL ELEVATION & PLAN
 ILLINOIS RIVER BRIDGE
 HAVANA, ILLINOIS
 S.B.I. ROUTE 78 SEC. 140 B-D-E-F-P
 FULTON-MASON COUNTIES

ROUTE NO.	SECTION	COUNTY	TOTAL SHEETS	SHEET NO.
F.A.P. 75	12D	PEORIA-TAZEWELL	22	2
FED. ROAD DIV. NO.	ILLINOIS PROJECT			



STATION 90+30
BUILT BY
STATE OF ILLINOIS
FA RTE 693 SEC. 12D
F.A. PROJ. BR-F-693(15)
LOADING H520
STR. NO. 090-0114
NAME PLATE
(See Sta. 2115)

DESIGN LOADS
Live Load H520-44
Future W.S. 125 psf

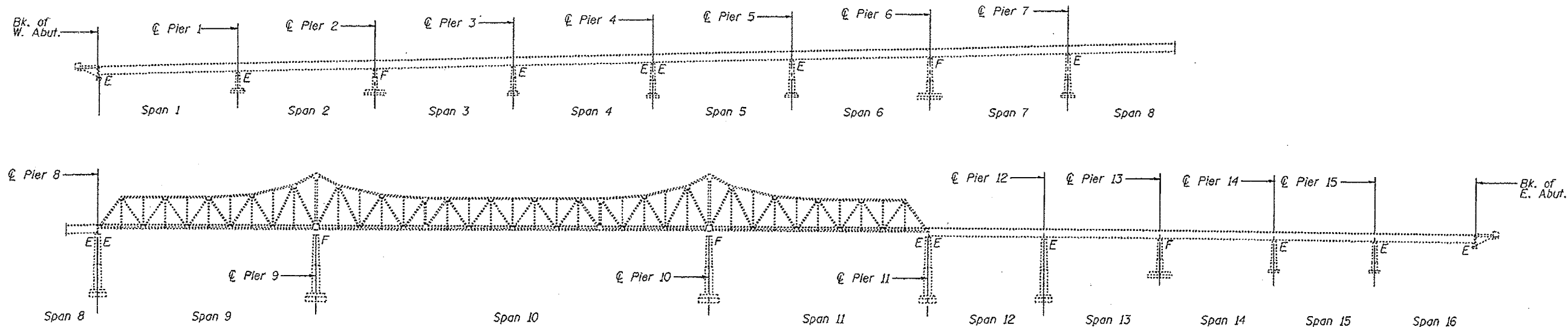
DESIGN STRESSES
fy = 60,000 psi (Reinforcement - Substructure, Deck, Curbs, Parapet & Median)
Load Factor Design
fs = 27,000 psi (Structural Steel A-222 - Unpainted) Up to 2" Thickness Inclusive (Except for Bearings and Pins)
fc = 5500 psi (Substructure, Deck, Curbs, Parapet & Median)

Waterway Information
Drainage Area 14,000 sq. miles TTH RATE 4PM
Q(100) 87,000 cfs
Opening (Prop'd) 22,300 sq. ft.
Opening (Proposed) 27,570 sq. ft. *
Q(50) 78,000 cfs +
* Controlled by other than hydraulic

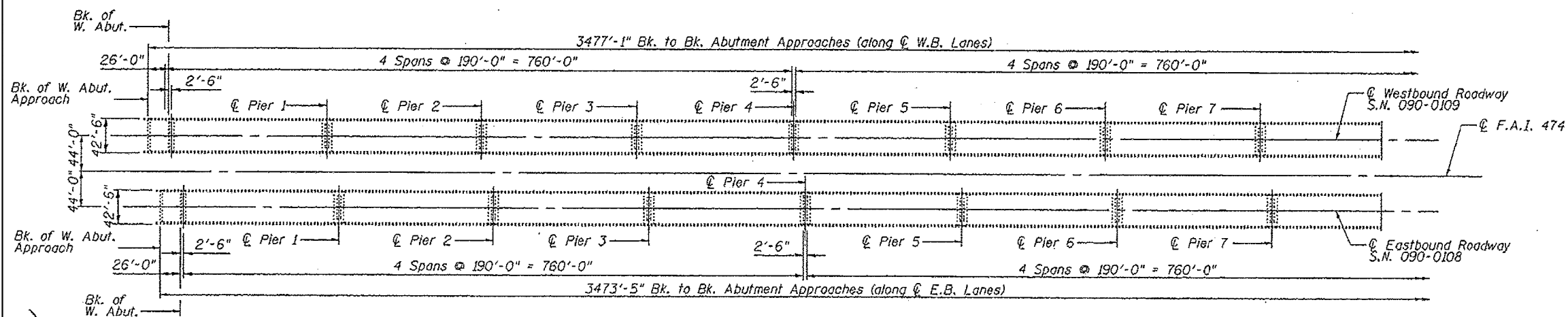
APPROVED
C. E. Hummer
C. L. Anderson

STATE OF ILLINOIS
REGISTERED PROFESSIONAL ENGINEER
1959
C. L. ANDERSON

STATE OF ILLINOIS
DEPARTMENT OF TRANSPORTATION
GENERAL PLAN & ELEVATION
PROJECT: F-156
ILL. 9 over ILLINOIS RIVER
F.A. 75 SECTION 12D
PEORIA-TAZEWELL COUNTIES
STA. 90+30



ELEVATION



DESIGN STRESSES

NEW CONSTRUCTION
 $f'_c = 3,500$ psi (Cast in Place Concrete)
 $f_y = 60,000$ psi (Reinforcing Steel)
 $F_y = 36,000$ psi unless otherwise noted (Structural Steel) (M270, Gr. 36)

LOADING HS20 & ALT.

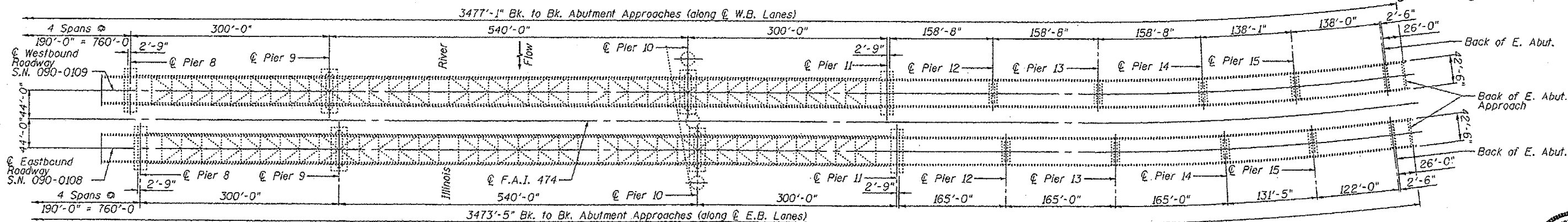
(Original Construction)

DESIGN SPECIFICATIONS

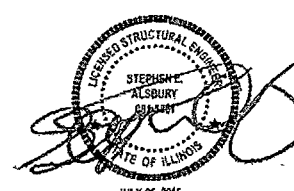
2002 AASHTO Standard Specifications for Highway Bridges, 17th Edition

APPROVED
 For Structural Adequacy Only

Stephenson
 Engineer of Bridges & Structures



PLAN



MODEL: D:\draft\...
 FILE NAME: S:\CADD\...
 USER: jochumsjg
 DATE: 3/20/2020

USER NAME = jochumsjg	DESIGNED -	REVISED -
	DRAWN -	REVISED -
PLOT SCALE = 100,0000' / in.	CHECKED -	REVISED -
PLOT DATE = 3/20/2020	DATE -	REVISED -

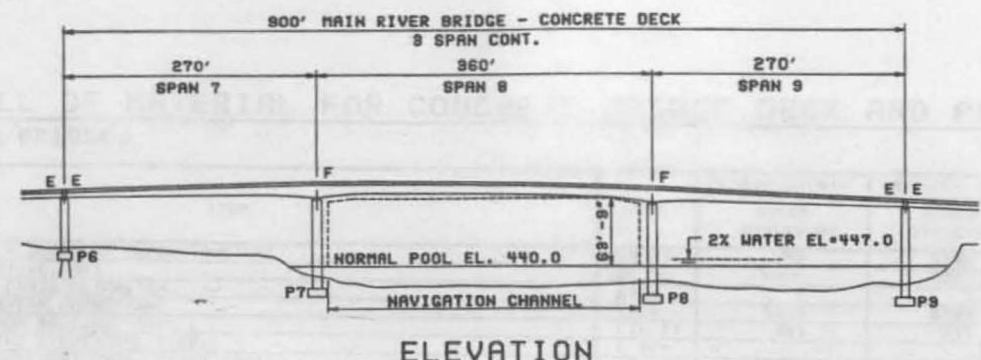
STATE OF ILLINOIS
 DEPARTMENT OF TRANSPORTATION

FOR INFORMATION ONLY
 S.N. 090-0108 & 090-0109 (I-474)

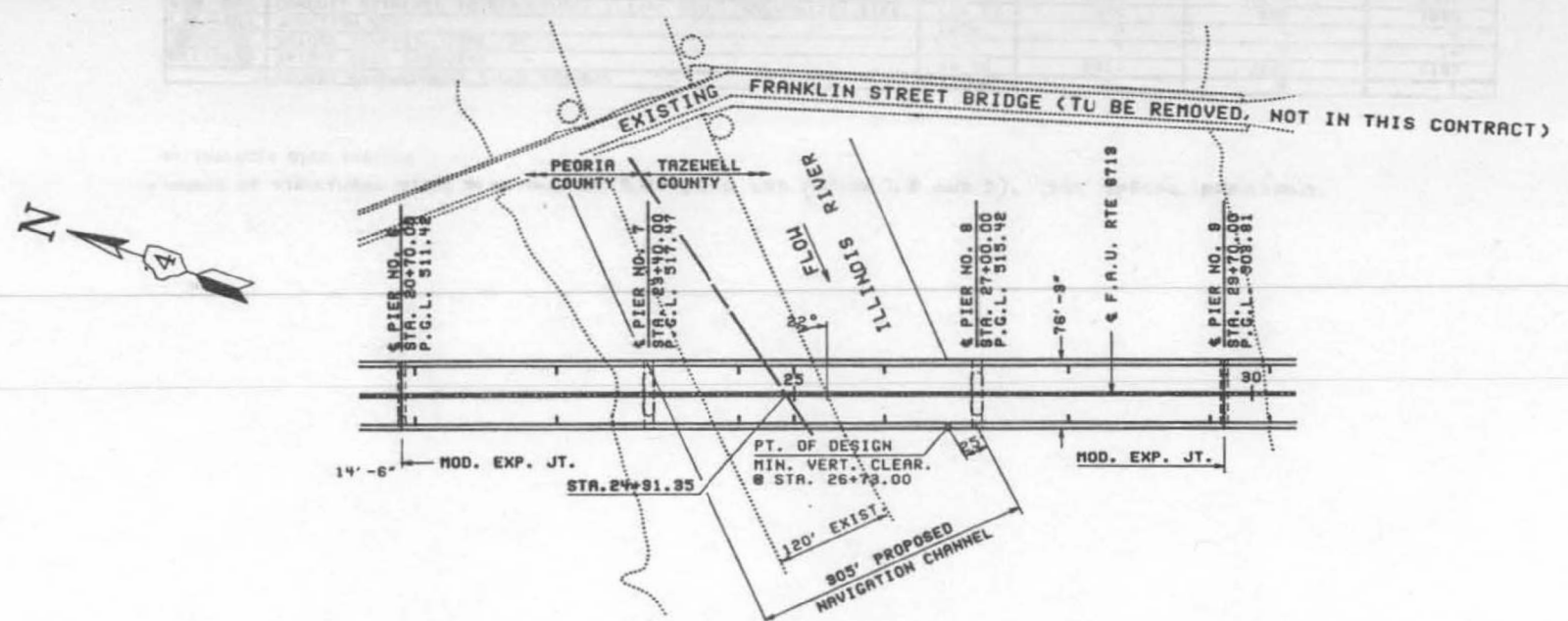
SCALE: SHEET OF SHEETS STA. TO STA.

F.A. RTE.	SECTION	COUNTY	TOTAL SHEETS	SHEET NO.
VAR 04 RIVER GAUGE CLEARANCE SIGN 2020		VARIES	17	14
CONTRACT NO. 68F40				
ILLINOIS FED. AID PROJECT				

ROUTE NO.	SECT.	COUNTY
F.A.U.	6713	PEORIA & TAZEWELL
FED. ROAD DIST. NO.	7	ILLINOIS FED. AID



ELEVATION



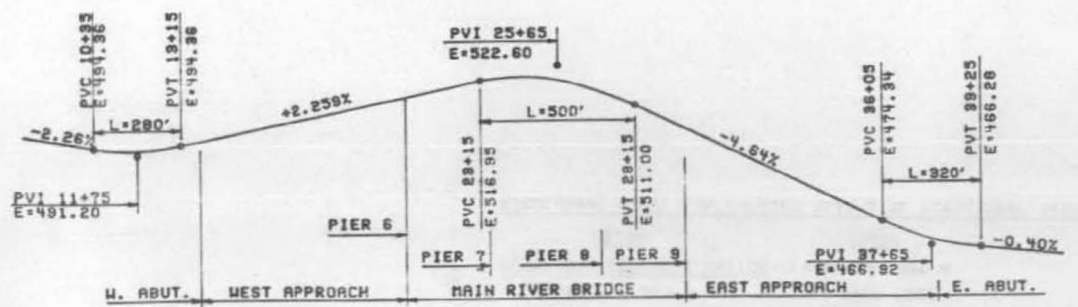
PLAN

DESIGN SPECIFICATIONS:
 1993 AASHTO - STANDARD SPECIFICATIONS FOR HIGHWAY BRIDGES.
 LOADING: LIVE - HS 20-44
 FUTURE WEARING SURF. = 25 #/SQ.FT.
 SEISMIC: 1983 AASHTO; GUIDE SPECIFICATIONS FOR SEISMIC DESIGN OF HIGHWAY BRIDGES:
 DESIGN FORCES FOR SEISMIC PERFORMANCE CATEGORY - A

NOTES:
 1. FOR GENERAL NOTES, INDEX OF DRAWINGS, DESIGN STRESSES SEE DWG. NO. RG-01.
 2. FOR TOTAL BILL OF MATERIAL OF MAIN RIVER BRIDGE CONCRETE DECK ONLY SEE DWG. NO. RG-02



Ulrich Gygax
 CHIEF STRUCTURAL ENGINEER
 EXPIRES 11/30/92



PROFILE GRADE LINE F.A.U. RTE. 6713
 (ALONG E ROADWAY)



LOCATION PLAN

APPROVED
 FOR STRUCTURAL AID ONLY
 Ralph E. Anderson
 ENGINEER

REVISION	DATE	DESCRIPTION
STATE OF ILLINOIS DEPARTMENT OF TRANSPORTATION		
BRIDGE PLANS GENERAL PLAN & ELEVATION		
FRANKLIN STREET BRIDGE OVER ILLINOIS RIVER F.A.U. RTE. 6713 SECTION STA. 25+20 PEORIA & TAZEWELL CO STRUCTURE NUMBER 090-0122		
STEINMAN BOYNTON INC. CONSULTING ENGINEERS - CHICAGO, ILLINOIS		
DRAWING NO. BP-01	SCALE N.T.S.	DATE 1-09-92

USER NAME = jochumsjg	DESIGNED -	REVISED -
PLOT SCALE = 100,000' / in.	DRAWN -	REVISED -
PLOT DATE = 3/20/2020	CHECKED -	REVISED -
	DATE -	REVISED -

STATE OF ILLINOIS
 DEPARTMENT OF TRANSPORTATION

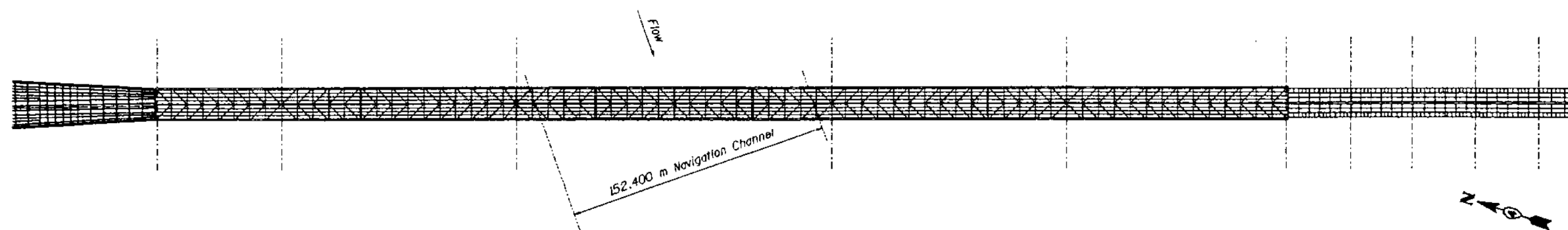
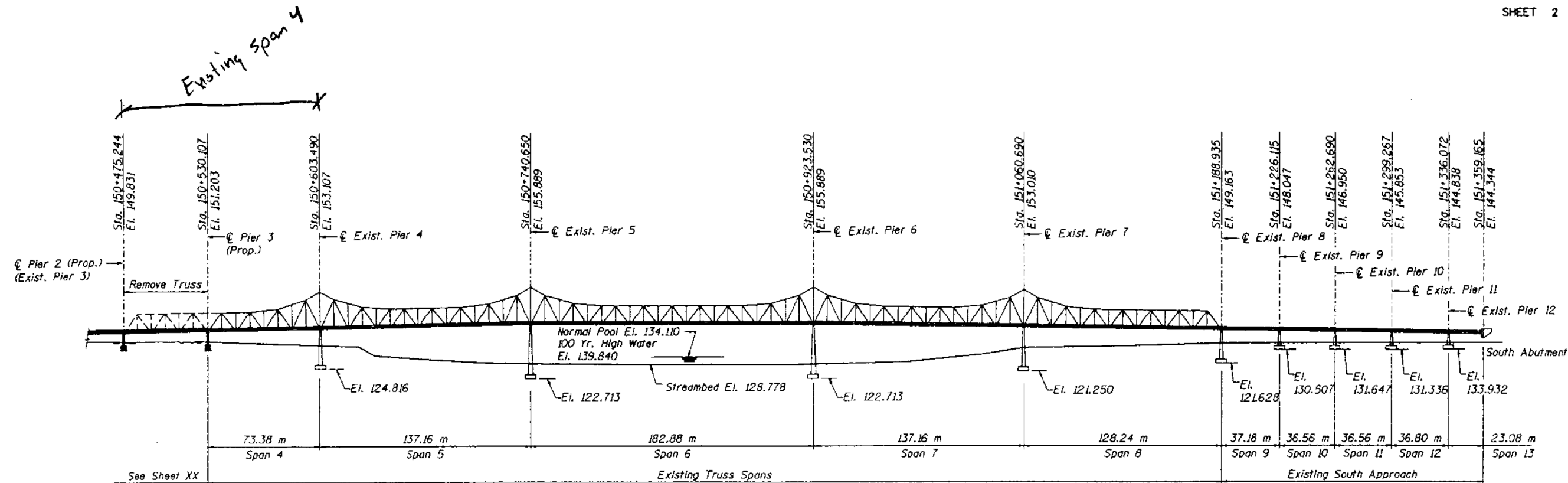
FOR INFORMATION ONLY
 S.N. 090-0122 (IL 40)

SCALE: SHEET OF SHEETS STA. TO STA.

F.A. RTE.	SECTION	COUNTY	TOTAL SHEETS	SHEET NO.
VAR 04 RIVER GAUGE CLEARANCE SIGN 2020		VARIABLES	17	15
CONTRACT NO. 68F40				
ILLINOIS FED. AID PROJECT				

MODEL: Dwg.dwg
 FILE: \\nas01\proj\gen\draft\proj\mes\des\68f40_Navigation_Clearance_Signs\Microstation\Drafting_File.dgn

FAJ74	•	TAZEWELL	1559	154
STA	TO STA			
F.M.W.A. REGION	ILLINOIS		PROJECT	



DESIGNED	KMP
CHECKED	KMP
DRAWN	VH
CHECKED	KMP

- Notes:
1. For truss repair details, see Sheets 71-74 & 84-89.
 2. See General Notes for Cleaning and Painting
 3. Coordinate all work with the U.S. Coast Guard when working over waterway...

ab **alfred benesch & company**
CONSULTING ENGINEERS
308 NORTH MICHIGAN AVENUE, CHICAGO, ILLINOIS 60601
JOB NO. 1573

ILLINOIS DEPARTMENT OF TRANSPORTATION
MURRAY BAKER BRIDGE
F.A.I. RTE. 74 OVER THE ILLINOIS RIVER
SECTION 90-100-1-BRY
GENERAL PLAN
(TRUSS & SOUTH APPROACH)

SN: 090-0001
PEORIA - TAZEWELL CO., IL.

STA. 150+475.243
DATE: 12-16-03

USER NAME = jochumsjg	DESIGNED -	REVISED -
	DRAWN -	REVISED -
PLOT SCALE = 100.0000' / in.	CHECKED -	REVISED -
PLOT DATE = 3/20/2020	DATE -	REVISED -

STATE OF ILLINOIS
DEPARTMENT OF TRANSPORTATION

FOR INFORMATION ONLY
S.N. 090-0001 (I-74)

SCALE: SHEET OF SHEETS STA. TO STA.

F.A. RTE.	SECTION	COUNTY	TOTAL SHEETS	SHEET NO.
VAR	D4 RIVER GAUGE CLEARANCE SIGN 2020	VARIES	17	16
			CONTRACT NO. 68F40	
		ILLINOIS	FED. AID PROJECT	

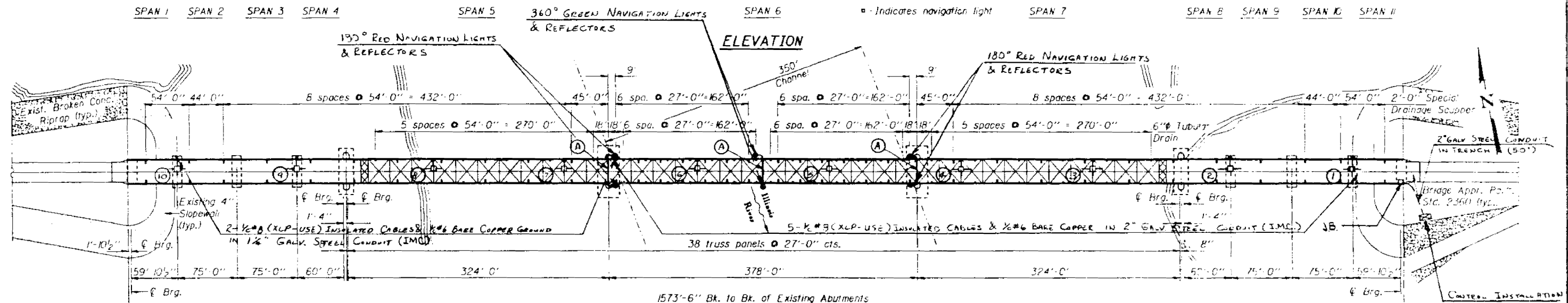
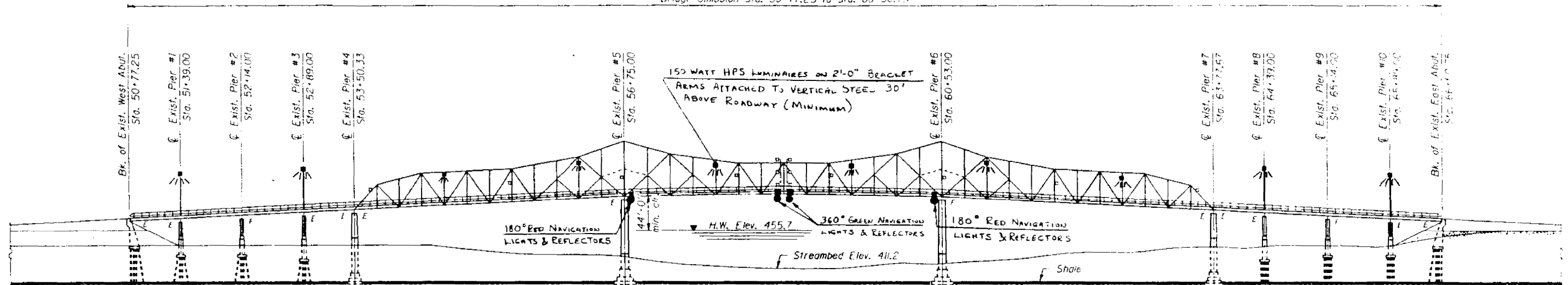
Bench Mark: To be provided by District during the Final Design Phase.

Existing Structure: S.N.062-0003. The 3 span continuous cantilevered truss with two 4 span continuous wide flange approach was built in 1939 as S.B.I. Route 90, Section 1b, S.E. & F. It has a bridge width of 24'-0" face to face of curb and a length of 1573'-6" back to back of abutments. The truss floor system and both approach superstructures shall be removed and replaced along with other repairs. Traffic shall be detoured during construction.
Salvage: None

STATE OF ILLINOIS
DEPARTMENT OF TRANSPORTATION

F.A.P. RTE. 849	SECTION	COUNTY	TOTAL SHEETS	SHEET NUMBER
ILL. RTE. 17	1 B-D	MARSHALL	17	101
I.L.H.A. REG. 4	ILLINOIS	PROJECT		

Bridge Omission Sta. 50+77.25 to Sta. 66+50.75



ELEVATION
PLAN

ROADWAY LIGHTING		
DESCRIPTION	UNIT	QUANTITY
ELECTRIC CABLE IN CONDUIT, 600 V (XLP TYPE USE) 1/2" #12	LIN FT	3,140
ELECTRIC CABLE IN CONDUIT, 600 V (XLP TYPE USE) 1/2" #8	LIN FT	3,330
BARE COPPER WIRE, 1/2" #8	LIN FT	1,865
CONDUIT IN TRENCH, 2" DIA (IME)	LIN FT	50
CONDUIT ATTACHED TO STRUCTURE, 3/4" DIA (IME)	LIN FT	210
CONDUIT ATTACHED TO STRUCTURE, 1 1/4" DIA (IME)	LIN FT	335
CONDUIT ATTACHED TO STRUCTURE, 2" DIA (IME)	LIN FT	320
GALVANIZED STEEL TRUSS MOUNT BRACKET ARM, 2"	EACH	4
LIGHT POLE, ALUMINUM, 15 FT HIGH, 2" DIA	EACH	4
CONTROL INSTALLATION TYPE CB-PT-400-140 (2) NUM.	EACH	2
LUMINAIRE, 500LM VAPOR RECTILINEAR TYPE, 150 WATT	EACH	5
TRENCH & BACKFILL FOR ROADWAY LIGHTING	LIN FT	5
MAINTENANCE AND REMOVAL OF LIGHTING SYSTEM COMPLETE	LN	1
NAVIGATION LIGHTING SYSTEM	LN	1

NAVIGATION LIGHTING QUANTITIES			
DESCRIPTION	UNIT	QUANTITY	
ELECTRIC CABLE IN CONDUIT, 600 V (XLP TYPE USE) 1/2" #8	LIN FT	3,000	
ELECTRIC CABLE IN CONDUIT, 600 V (XLP TYPE USE) 1/2" #12	LIN FT	420	
CONDUIT ATTACHED TO STRUCTURE, 3/4" DIA (IME)	LIN FT	2	
NAVIGATION LUMINAIRE 360 DEGREE GREEN & REFLECTOR	EACH	4	
NAVIGATION LUMINAIRE 180 DEGREE RED & REFLECTOR	EACH	4	

MODEL: D:\draft\... FILE NAME: S:\GEN\DRAWING... NAVIGATION CLEARANCE SIGN\Microstation\Drawing File.dgn

USER NAME = jochumsjg	DESIGNED -	REVISED -
PLOT SCALE = 100,0000' / in.	DRAWN -	REVISED -
PLOT DATE = 3/20/2020	CHECKED -	REVISED -
	DATE -	REVISED -

STATE OF ILLINOIS
DEPARTMENT OF TRANSPORTATION

FOR INFORMATION ONLY
S.N. 062-0003 (IL 17)

SCALE: SHEET OF SHEETS STA. TO STA.

F.A. RTE.	SECTION	COUNTY	TOTAL SHEETS	SHEET NO.
VAR 04 RIVER GAUGE CLEARANCE SIGN 2020		VARIES	17	17
CONTRACT NO. 68F40			ILLINOIS FED. AID PROJECT	