

STATE OF ILLINOIS
DEPARTMENT OF TRANSPORTATION

SECTION	COUNTY	TOTAL SHEETS	SHEET NO.
74	MCLEAN	8	1
CONTRACT NO. 70E45			

D-95-012-20

FOR INDEX OF SHEETS, SEE SHEET NO. 2
FOR SUMMARY OF QUANTITIES, SEE SHEET NO. 3

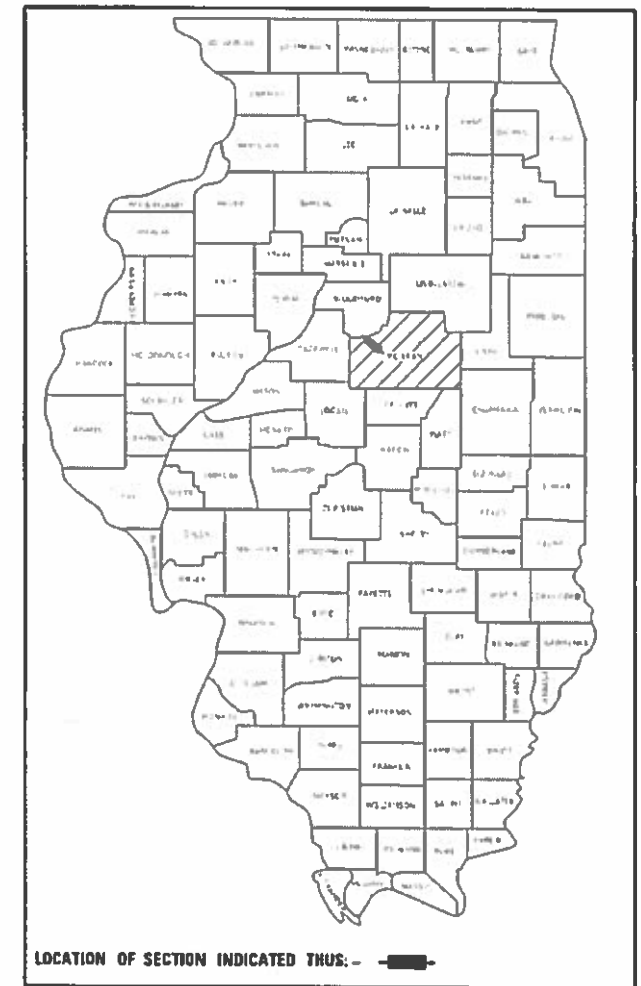
PROPOSED HIGHWAY PLANS

CURRENT TRAFFIC DATA FOR WEIGH STATIONS

	LEG "A"	LEG "B"
2019 ADT	700	1,150
P.U. %	28.5	26.1
S.U. %	17.9	17.4
M.U. %	53.6	56.5

LEG "A" IS THE EASTBOUND WEIGH STATION
LEG "B" IS THE WESTBOUND WEIGH STATION

FAI ROUTE 74 (I-74)
SECTION CARLOCK WS PATCHING 2020-1
PROJECT STP-077Z(666)
PATCHING
MCLEAN COUNTY



DESIGN DESIGNATION
N/A

C-95-026-20

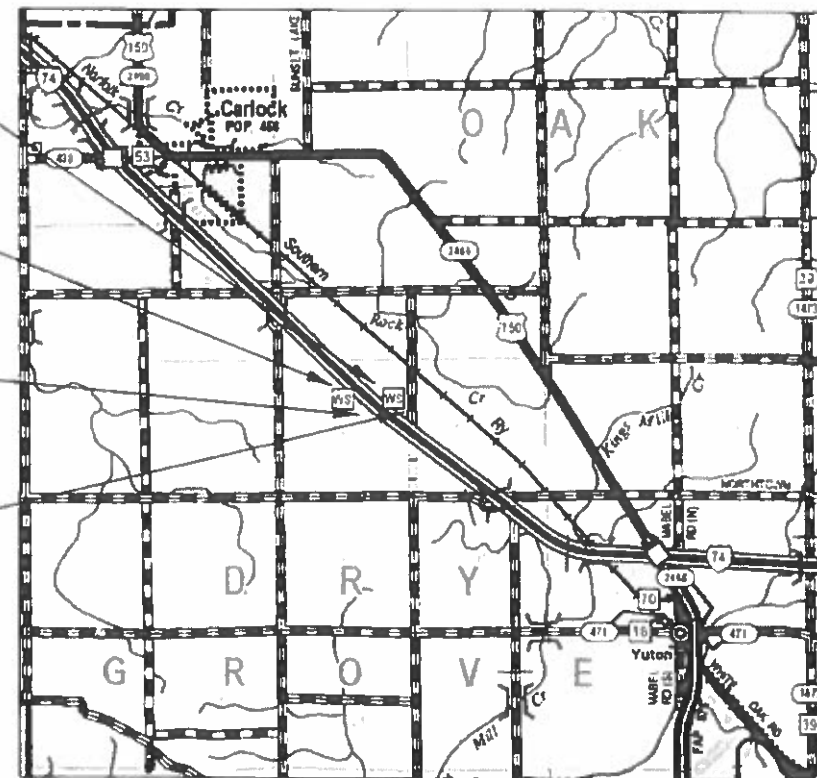
CARLOCK WEIGH STATION
R 1 E

WESTBOUND WEIGH STATION
SECTION ENDS:
STA. 29 + 00.00

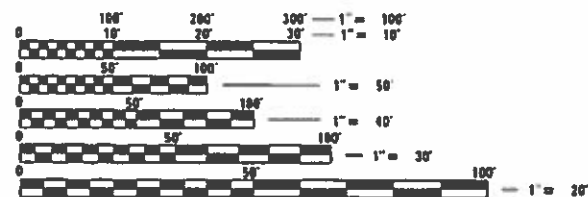
EASTBOUND WEIGH STATION
SECTION BEGINS:
STA. 7 + 00.00

EASTBOUND WEIGH STATION
SECTION ENDS:
STA. 29 + 00.00

WESTBOUND WEIGH STATION
SECTION BEGINS:
STA. 7 + 00.00



GROSS LENGTH = 4,400.00 FT. = 0.833 MILE
NET LENGTH = 4,400.00 FT. = 0.833 MILE



FULL SIZE PLANS HAVE BEEN PREPARED USING STANDARD ENGINEERING SCALES. REDUCED SIZED PLANS WILL NOT CONFORM TO STANDARD SCALES. IN MAKING MEASUREMENTS ON REDUCED PLANS, THE ABOVE SCALES MAY BE USED.

J.U.L.I.E.
JOINT UTILITY LOCATION INFORMATION FOR EXCAVATORS
1-800-892-0123
OR 811 DRY GROVE TOWNSHIP

PROJECT ENGINEER: JASON STULTS
SQUAD LEADER: BRIAN J. HOGAN
PHONE: (217)-465-4181
CONTRACT NO. 70E45

STATE OF ILLINOIS
DEPARTMENT OF TRANSPORTATION

SUBMITTED 10-2 2019
Kerol A. Barnett sw
REGIONAL ENGINEER

MAY 8 20 20
[Signature]
ENGINEER OF DESIGN AND ENVIRONMENT

MAY 8 20 20
[Signature]
DIRECTOR OF HIGHWAYS PROJECT IMPLEMENTATION

PRINTED BY THE AUTHORITY
OF THE STATE OF ILLINOIS

INDEX OF SHEETS

<u>SHEET NO.</u>	<u>DESCRIPTION</u>
1	COVER SHEET
2	INDEX OF SHEETS
2	LIST OF STANDARDS
2	GENERAL NOTES
3	SUMMARY OF QUANTITIES
4	TYPICAL CROSS SECTIONS
5	SCHEDULE OF QUANTITIES
6-8	PLAN SHEETS

LIST OF STANDARDS

<u>STANDARD NO.</u>	<u>DESCRIPTION</u>
000001-07	STANDARD SYMBOLS, ABBREVIATIONS AND PATTERNS
001001-02	AREAS OF REINFORCEMENT BARS
001006	DECIMAL OF AN INCH AND OF A FOOT
420701-03	PAVEMENT WELDED WIRE REINFORCEMENT
442101-09	CLASS B PATCHES
701101-05	OFF-ROAD OPERATIONS, MULTILANE, 15' (4.5 m) TO 24" (600 mm) FROM PAVEMENT EDGE
701451-05	RAMP CLOSURE FREEWAY/EXPRESSWAY
701901-08	TRAFFIC CONTROL DEVICES

GENERAL NOTES

G.N.-100A
ELECTRONIC FILES AND/OR ELECTRONIC SURVEY INFORMATION INCLUDING CADD FILES WILL NOT BE AVAILABLE TO THE CONTRACTOR.

GN 105.07C
EXISTING STATE-OWNED AND MAINTAINED UNDERGROUND UTILITY FACILITIES EXIST WITHIN THE ROW. THE DEPARTMENT IS NOT A MEMBER OF JULIE AND DOES NOT LOCATE IT'S OWN FACILITIES. THE CONTRACTOR SHALL BE RESPONSIBLE AT THEIR OWN EXPENSE FOR SECURING AN APPROVED LOCATING FIRM TO LOCATE ALL EXISTING IDOT UNDERGROUND FACILITIES PRIOR TO COMMENCING ANY EXCAVATION, PER THE REQUIREMENTS OF ARTICLE 803 OF THE STANDARD SPECIFICATIONS. UTILITY LOCATES MAY ALSO BE REQUIRED OUTSIDE THE PROJECT LIMITS, SUCH AS FOR TRAFFIC CONTROL SIGNING AND OTHER ITEMS. THE CONTRACTOR MAY OBTAIN, ON REQUEST, PLANS OF EXISTING ELECTRICAL FACILITIES FROM THE DEPARTMENT. FOR FURTHER INFORMATION, THE CONTRACTOR MAY CONTACT THE DISTRICT TRAFFIC OPERATIONS ENGINEER, GARY SIMS, AT 217-251-4859.

G.N.-105.09A
ALL ELEVATIONS SHOWN IN THE PLANS ARE BASED ON NORTH AMERICAN VERTICAL DATUM OF 1988. (NAVD 88)

G.N.- 442B - PATCHING SCHEDULES
THE PATCHING SCHEDULES INCLUDED IN THE PLANS REPRESENT THE BEST INFORMATION AVAILABLE AT THE TIME OF COMPLETION OF THE PLANS FOR LETTING. VARIATIONS IN LOCATION AND SIZES OF THE FULL-DEPTH AND PARTIAL-DEPTH PATCHES MAY OCCUR.

NO COMMITMENTS.

**STATE OF ILLINOIS
DEPARTMENT OF TRANSPORTATION**

**INDEX OF SHEETS, LIST OF STANDARDS,
AND GENERAL NOTES**

SCALE: N/A SHEET 1 OF 1 SHEETS STA. TO STA.

F.A.I. RTE.	SECTION	COUNTY	TOTAL SHEETS	SHEET NO.
74	*	MCLEAN	8	2
* CARLOCK WS PATCHING 2020-1		CONTRACT NO. 70E45		
ILLINOIS FED. AID PROJECT				

SUMMARY OF QUANTITIES

LOCATION OF WORK:

F.A.I. 74 (I-74)

RURAL MULTILANE

INTERSTATE

STA. 7+00.00 TO STA. 29+00.00

MCLEAN COUNTY

FUNDING BREAKOUT: STP-STWD FLEX-S (UNRSTRCTD) - 80% FED / 20% STATE

CONSTRUCTION TYPE CODE:

0006

CODE NO.	ITEM	UNIT	TOTAL QUANTITY	
4200060	WELDED WIRE REINFORCEMENT	SQ YD	586.0	586.0
44201007	CLASS B PATCHES, TYPE II, 13 INCH	SQ YD	109.0	109.0
44201011	CLASS B PATCHES, TYPE III, 13 INCH	SQ YD	89.0	89.0
44201013	CLASS B PATCHES, TYPE IV, 13 INCH	SQ YD	497.0	497.0
44201299	DOWEL BARS 1 1/2"	EACH	866.0	866.0
44213200	SAW CUTS	FOOT	1,983.0	1,983.0
44213204	TIE BARS 3/4"	EACH	89.0	89.0
67100100	MOBILIZATION	L SUM	1.0	1.0
70100820	TRAFFIC CONTROL AND PROTECTION, STANDARD 701451	L SUM	1.0	1.0
* DENOTES SPECIALTY ITEM				

MODEL: \\MODEL\NAMES
FILE: \\models\p10\p10m\comad\at\illinois\p10\p10\DOT\Documents\DOT_Offices\Illin\ct 5\Projects\0570E45\CADDData\CAD\Sheet\0570E45-rh-500.dgn

USER NAME = hoganbj	DESIGNED -	REVISED -
	DRAWN -	REVISED -
PLOT SCALE = 40.0000 ' / in.	CHECKED -	REVISED -
PLOT DATE = 9/12/2019	DATE -	REVISED -

**STATE OF ILLINOIS
DEPARTMENT OF TRANSPORTATION**

SUMMARY OF QUANTITIES

SCALE: N/A SHEET 1 OF 1 SHEETS STA. TO STA.

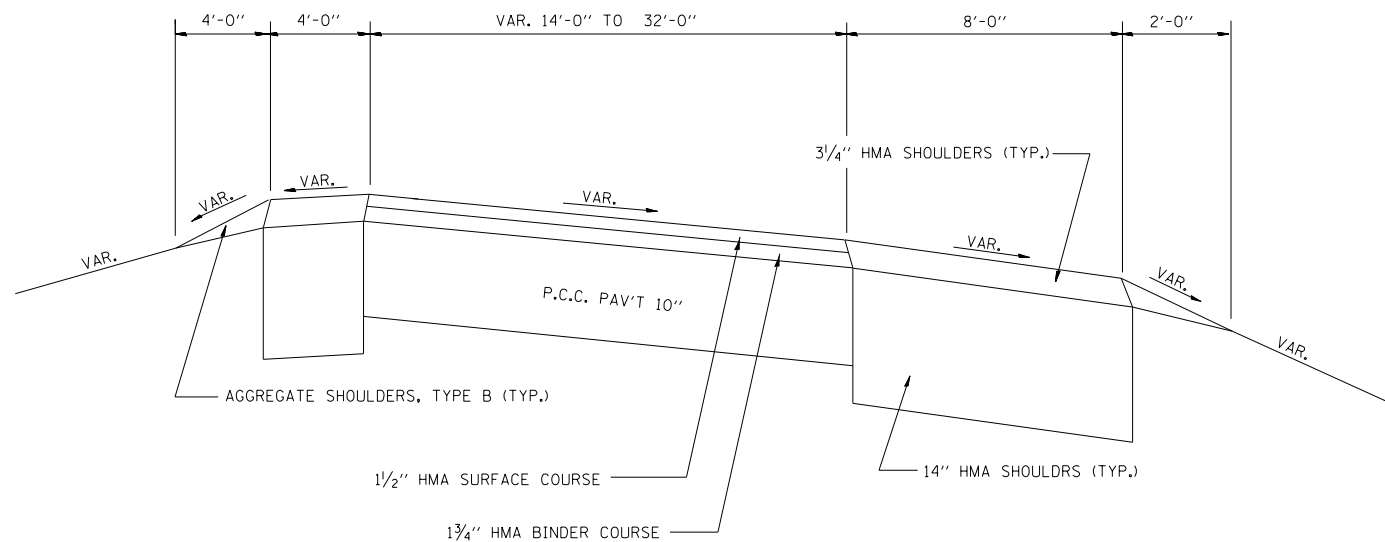
F.A.I. RTE.	SECTION	COUNTY	TOTAL SHEETS	SHEET NO.
74	*	MCLEAN	8	3
* CARLOCK WS PATCHING 2020-1		CONTRACT NO. 70E45		
ILLINOIS FED. AID PROJECT				

EXISTING TYPICAL SECTION

F.A.I. – 74 WESTBOUND & EASTBOUND

CARLOCK WEIGH STATION

STATION	TO	STATION
WB 7+00.00		14+54.50 *
WB 19+32.00		29+00.00
EB 7+00.00		13+25.00 *
EB 19+45.00		29+00.00



*OMISSION FOR SCALES

STATION	TO	STATION
WB 14+54.50		19+32.00
EB 13+25.00		19+45.00

MODEL: I:\MODEL\MHMF5
 FILE: MHMF5_Plan\IllumData\Illinois.gov\RWIDOT\Documents\DOT_Offices\District 5\Projects\0570E45\CADDData\CAD\Sheets\0570E45-ht-typical.dgn

USER NAME = hoganbj	DESIGNED -	REVISED -
	DRAWN -	REVISED -
PLOT SCALE = 100.0000 ' / in.	CHECKED -	REVISED -
PLOT DATE = 9/12/2019	DATE -	REVISED -

**STATE OF ILLINOIS
DEPARTMENT OF TRANSPORTATION**

TYPICAL CROSS SECTIONS

SCALE: N/A SHEET 1 OF 1 SHEETS STA. TO STA.

F.A.I. RTE.	SECTION	COUNTY	TOTAL SHEETS	SHEET NO.
74	*	MCLEAN	8	4
* CARLOCK WS PATCHING 2020-1		CONTRACT NO. 70E45		
ILLINOIS FED. AID PROJECT				

**CARLOCK WEIGH STATION
PATCHING SCHEDULE**

STATION	WB/EB	LENGTH (FOOT)	WIDTH (FOOT)	CLASS B PATCHES, TYPE II, 13 INCH 44201007 (SQ YD)	CLASS B PATCHES, TYPE III, 13 INCH 44201011 (SQ YD)	CLASS B PATCHES, TYPE IV, 13 INCH 44201013 (SQ YD)	DOWEL BARS 1 1/2" 44201299 (EACH)	WELDED WIRE REINFORCEMENT 42000060 (SQ YD)	SAW CUTS 44213200 (FOOT)	TIE BARS 3/4" 44213204 (EACH)
8+26	WB	10.0	14.5	0.0	16.1	0.0	25.0	16.1	63.5	0.0
8+76	WB	6.0	14.5	9.7	0.0	0.0	25.0	0.0	55.5	0.0
9+05	WB	18.0	14.5	0.0	0.0	29.0	38.0	29.0	79.5	0.0
9+78	WB	6.0	14.5	9.7	0.0	0.0	25.0	0.0	55.5	0.0
10+92	WB	6.0	14.5	9.7	0.0	0.0	25.0	0.0	55.5	0.0
11+90	WB	25.0	14.5	0.0	0.0	40.3	38.0	40.3	93.5	8.0
12+69	WB	22.0	14.5	0.0	0.0	35.4	38.0	35.4	87.5	7.0
13+68	WB	14.0	14.5	0.0	22.6	0.0	25.0	22.6	71.5	0.0
14+45	WB	27.0	14.5	0.0	0.0	43.5	38.0	43.5	97.5	9.0
19+73	WB	86.0	14.0	0.0	0.0	133.8	84.0	133.8	214.0	29.0
20+57	WB	25.0	17.5	0.0	0.0	48.6	47.0	48.6	102.5	8.0
20+93	WB	6.0	17.5	11.7	0.0	0.0	31.0	0.0	64.5	0.0
8+05	EB	6.0	14.5	9.7	0.0	0.0	25.0	0.0	55.5	0.0
8+34	EB	25.0	14.5	0.0	0.0	40.3	38.0	40.3	93.5	8.0
10+67	EB	10.0	14.5	0.0	16.1	0.0	25.0	16.1	63.5	0.0
11+75	EB	6.0	14.5	9.7	0.0	0.0	25.0	0.0	55.5	0.0
11+96	EB	8.0	14.5	12.9	0.0	0.0	25.0	0.0	59.5	0.0
12+55	EB	60.0	14.5	0.0	0.0	96.7	63.0	96.7	163.5	20.0
13+13	EB	18.0	14.5	0.0	0.0	29.0	38.0	29.0	79.5	0.0
23+67	EB	6.0	26.0	0.0	17.3	0.0	48.0	17.3	90.0	0.0
24+23	EB	6.0	24.0	0.0	16.0	0.0	44.0	16.0	84.0	0.0
25+73	EB	6.0	20.0	13.3	0.0	0.0	36.0	0.0	72.0	0.0
26+04	EB	6.0	18.0	12.0	0.0	0.0	32.0	0.0	66.0	0.0
26+94	EB	6.0	16.0	10.7	0.0	0.0	28.0	0.0	60.0	0.0
GRAND TOTALS :				108.9	88.1	496.6	866.0	584.7	1,983.0	89.0
ROUND TO:				109.0	89.0	497.0	866.0	586.0	1,983.0	89.0

MODEL: s:\MODEL\MHFS
 FILE: MHFS_PatchingSchedule.dwg
 PROJECT: 0570E45\CADDData\CAD\patches\0570E45-patch-schedule.dwg

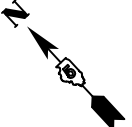
USER NAME = hoganbj	DESIGNED -	REVISED -
	DRAWN -	REVISED -
PLOT SCALE = 40.0000' / in.	CHECKED -	REVISED -
PLOT DATE = 9/12/2019	DATE -	REVISED -

**STATE OF ILLINOIS
DEPARTMENT OF TRANSPORTATION**

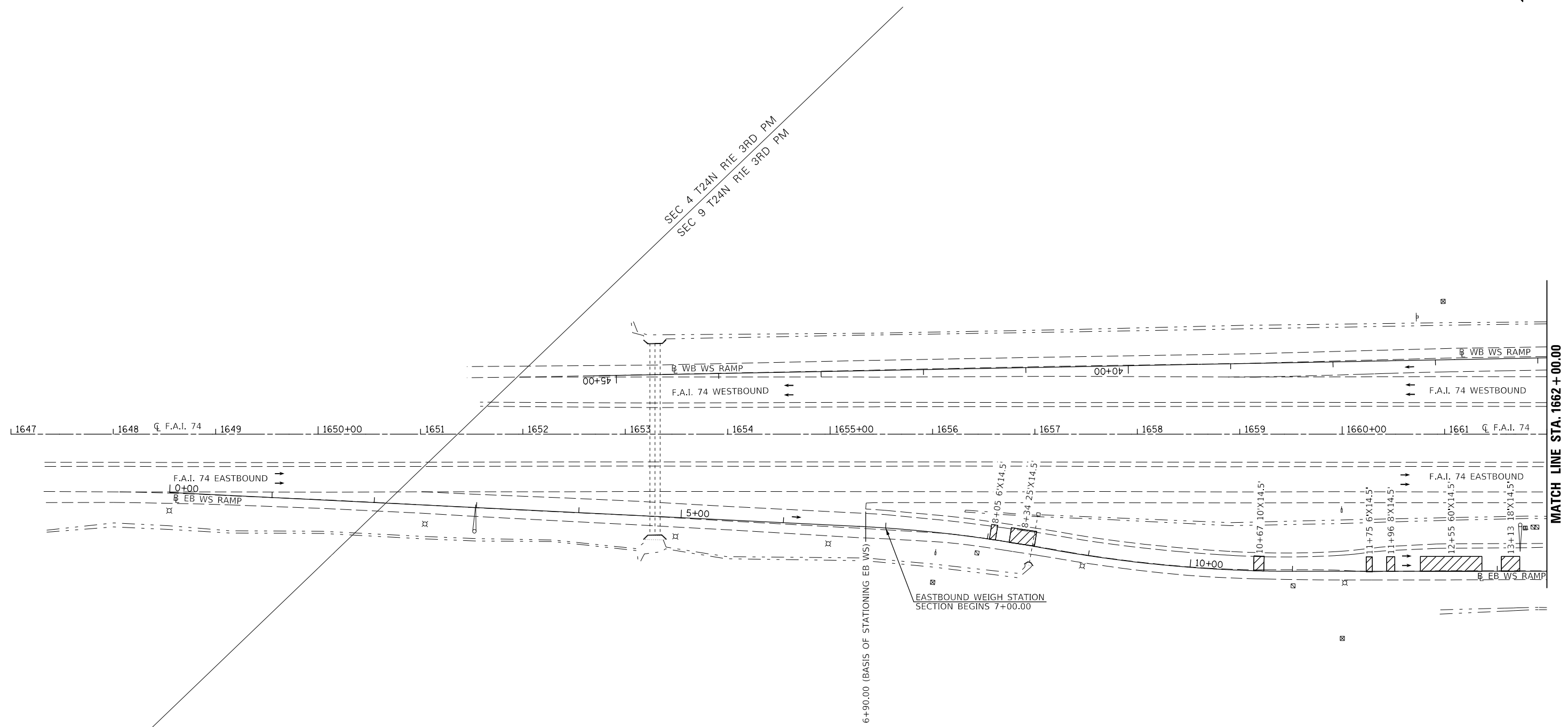
SCHEDULE OF QUANTITIES

SCALE: N/A SHEET 1 OF 1 SHEETS STA. TO STA.

F.A.I. RTE.	SECTION	COUNTY	TOTAL SHEETS	SHEET NO.
74	*	MCLEAN	8	5
* CARLOCK WS PATCHING 2020-1		CONTRACT NO. 70E45		
ILLINOIS FED. AID PROJECT				



SEC 4 T24N R1E 3RD PM
 SEC 9 T24N R1E 3RD PM



MATCH LINE STA. 1662 + 00.00

CLASS B PATCHES, VAR. TYPES, 13 INCH

MODEL: s:\MODEL\MHFS
 FILE: MHFS_Plan\Illinois\pwr\WIDOT\Documents\DOT_Offices\District 5\Projects\0570E45\CADDData\CAD\patches\0570E45-pts-plan.dgn

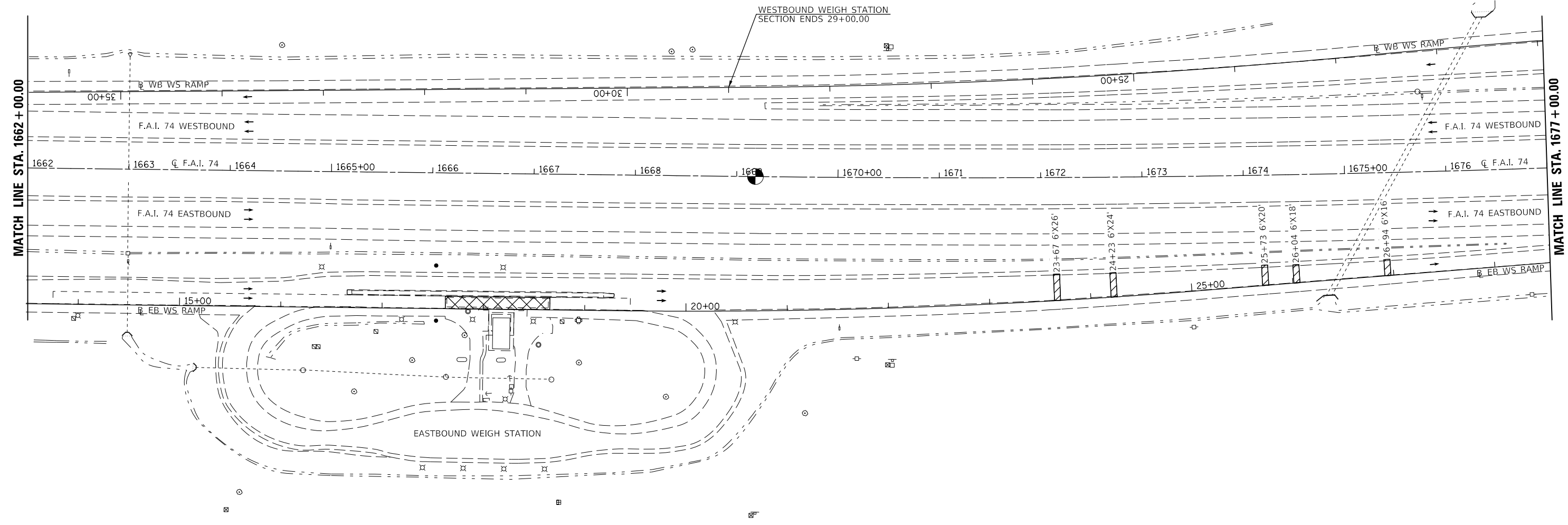
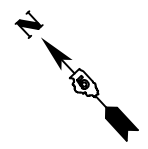
USER NAME = hoganbj	DESIGNED -	REVISED -
	DRAWN -	REVISED -
PLOT SCALE = 100.0000' / in.	CHECKED -	REVISED -
PLOT DATE = 9/12/2019	DATE -	REVISED -

**STATE OF ILLINOIS
 DEPARTMENT OF TRANSPORTATION**

PLAN SHEETS

SCALE: 1" = 50' SHEET 1 OF 3 SHEETS STA. 1647+00.00 TO STA. 1662+00.00

F.A.I. RTE.	SECTION	COUNTY	TOTAL SHEETS	SHEET NO.
74	*	MCLEAN	8	6
* CARLOCK WS PATCHING 2020-1		CONTRACT NO. 70E45		
ILLINOIS FED. AID PROJECT				



- OMISSION FOR SCALE
- CLASS B PATCHES, VAR. TYPES, 13 INCH

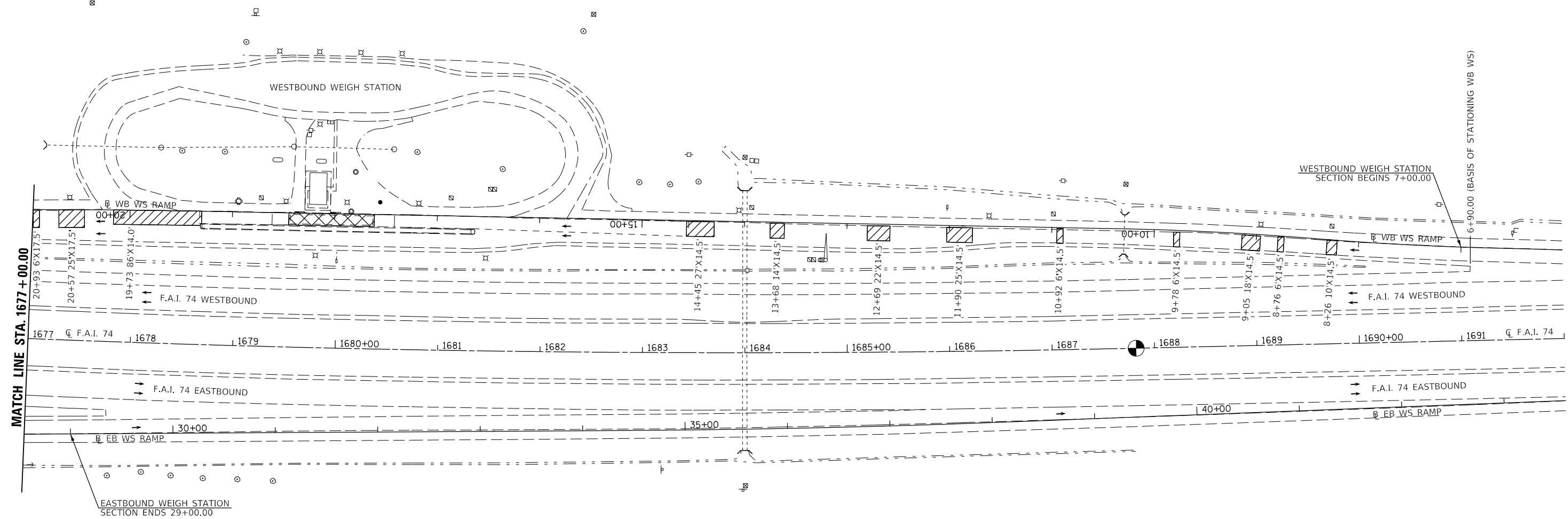
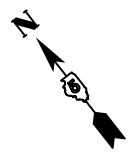
MODEL: \\MODEL\MAR\FE
 FILE: MAR\FE_Plan\Illinois\DOT\Documents\DOT_Offices\Illinois\DOT\Projects\70E45\CADDData\CAD\patches\70E45-Plan.dwg

USER NAME = cearlokdj	DESIGNED -	REVISED -
	DRAWN -	REVISED -
PLOT SCALE = 100,0000' / in.	CHECKED -	REVISED -
PLOT DATE = 10/2/2019	DATE -	REVISED -

**STATE OF ILLINOIS
DEPARTMENT OF TRANSPORTATION**

PLAN SHEETS			
SCALE: 1" = 50'	SHEET 2	OF 3 SHEETS	STA. 1662+00.00 TO STA. 1677+00.00

F.A.I. RTE.	SECTION	COUNTY	TOTAL SHEETS	SHEET NO.
74	*	MCLEAN	8	7
* CARLOCK WS PATCHING 2020-1			CONTRACT NO. 70E45	
ILLINOIS FED. AID PROJECT				



- OMISSION FOR SCALE
- CLASS B PATCHES, VAR. TYPES, 13 INCH

MODEL: s:\MODEL\MARIS
 FILE: MARIS_Plan\Illinois\pwr\WIDOT\Documents\DOT_Offices\District 5\Projects\0570E45\CADDData\CAD\patches\0570E45-pts-plan.dgn

USER NAME = cearlokdj	DESIGNED -	REVISED -
	DRAWN -	REVISED -
PLOT SCALE = 100,0000' / in.	CHECKED -	REVISED -
PLOT DATE = 10/2/2019	DATE -	REVISED -

**STATE OF ILLINOIS
DEPARTMENT OF TRANSPORTATION**

PLAN SHEETS	
SCALE: 1" = 50'	SHEET 3 OF 3 SHEETS
STA. 1677+00.00 TO STA. 1692+00.00	

F.A.I. RTE.	SECTION	COUNTY	TOTAL SHEETS	SHEET NO.
74	*	MCLEAN	8	8
* CARLOCK WS PATCHING 2020-1			CONTRACT NO. 70E45	
		ILLINOIS	FED. AID PROJECT	