

STATE OF ILLINOIS
DEPARTMENT OF TRANSPORTATION

F.A.I. RTE.	SECTION	COUNTY	TOTAL SHEETS	SHEET NO.
70	82-2-1PS-5	ST. CLAIR	15	1
		ILLINOIS	CONTRACT NO. 76N54	

INDEX OF SHEETS

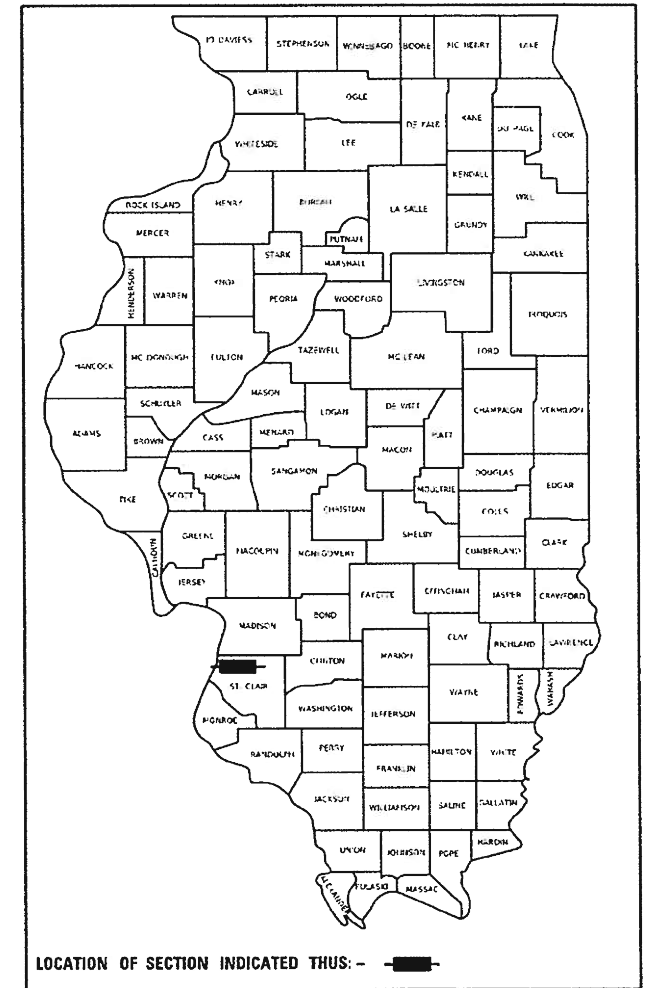
- 1 COVER SHEET
- 2 BOWMAN PUMP STATION ELECTRICAL MODIFICATIONS GENERAL NOTES
- 3 BOWMAN PUMP STATION ELECTRICAL MODIFICATIONS SUMMARY OF QUANTITIES
- 4 BOWMAN PUMP STATION ELECTRICAL MODIFICATIONS DEMOLITION SECTION
- 5 BOWMAN PUMP STATION ELECTRICAL MODIFICATIONS VENTILATION SECTION
- 6 BOWMAN PUMP STATION ELECTRICAL MODIFICATIONS VENTILATION SECTIONS
- 7 BOWMAN PUMP STATION ELECTRICAL MODIFICATIONS VENTILATION PLAN AT ELEVATION 422.0
- 8 BOWMAN PUMP STATION ELECTRICAL MODIFICATIONS VENTILATION PLAN AT EL 393.67, EL 408.0
- 9 BOWMAN PUMP STATION ELECTRICAL MODIFICATIONS VENTILATION PLAN AT EL 366.0, EL 380.0
- 10 BOWMAN PUMP STATION ELECTRICAL MODIFICATIONS CONTROL SCHEMATIC
- 11 BOWMAN PUMP STATION ELECTRICAL MODIFICATIONS PROPOSED SINGLE LINE DIAGRAM
- 12 BOWMAN PUMP STATION ELECTRICAL MODIFICATIONS ELECTRICAL PLAN
- 13 BOWMAN PUMP STATION ELECTRICAL MODIFICATIONS EXISTING PUMP ROOM PLAN
- 14 BOWMAN PUMP STATION ELECTRICAL MODIFICATIONS PROPOSED PUMP ROOM PLAN
- 15 BOWMAN PUMP STATION MOTOR STARTER REPLACEMENT ELECTRICAL PLAN AT ELEVATION 380.0

PROPOSED
HIGHWAY PLANS

FAI ROUTE 70 (I-70)
SECTION 82-2-1PS-5
PUMP STATION REPAIRS
ST. CLAIR COUNTY

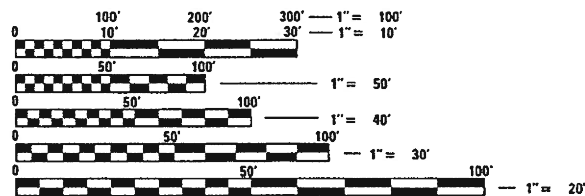
C-98-103-20

D-98-087-20



HIGHWAY STANDARDS

000001-07 STANDARD SYMBOLS, ABBREVIATIONS AND PATTERNS

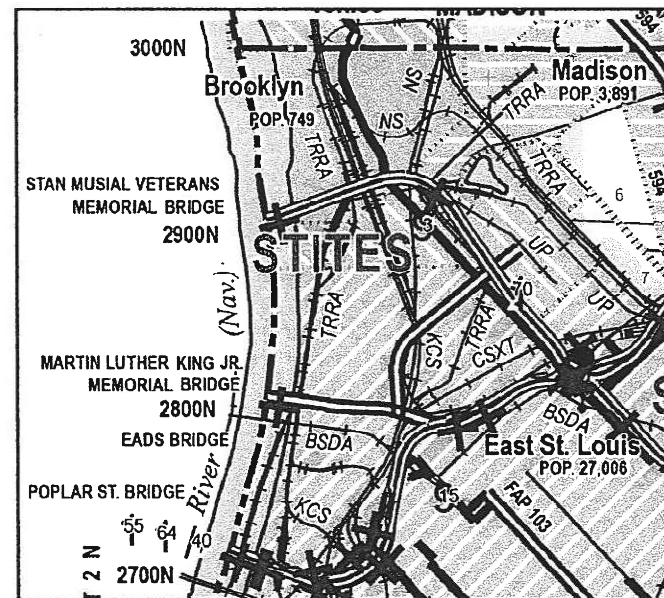


FULL SIZE PLANS HAVE BEEN PREPARED USING STANDARD ENGINEERING SCALES. REDUCED SIZED PLANS WILL NOT CONFORM TO STANDARD SCALES. IN MAKING MEASUREMENTS ON REDUCED PLANS, THE ABOVE SCALES MAY BE USED.

J.U.L.I.E.
JOINT UTILITY LOCATION INFORMATION FOR EXCAVATION
1-800-892-0123
OR 811

PROJECT ENGINEER HERVE GELIN 618-346-3175
PROJECT MANAGER PHILLIP SAWYER 618-346-3275

CONTRACT NO. 76N54



BOWMAN AVENUE
PUMP STATION

ST. CLAIR COUNTY

PLANS PREPARED BY:
KLINGNER & ASSOCIATES, P.C.
Engineers • Architects • Surveyors
616 North 24th Street, Quincy, IL Ph (217)223-3670 - Fax (217)223-3603
4510 Paris Gravel Road, Hannibal, MO Ph (573)221-0020 - Fax (573)221-0012
810 N. 4th Street, Suite 100, Burlington, IA Ph (319)753-1836 - Fax (319)753-3026
49 North Prairie Street, Galesburg, IL Ph (309)341-3781
604 Liberty Street, Suite 125, Peoria, IA Ph (309)612-7402
907 East Ash Street, Columbia, MO Ph (573)355-5988
Internet Address: www.klingner.com
STATE OF ILLINOIS DESIGN FIRM # 1842738



DANE A. STIVERS
REGISTERED PROFESSIONAL ENGINEER
STATE OF ILLINOIS NO. 062-062692
LICENSE EXPIRES NOVEMBER 30, 2021
DATE 03/19/2020

STATE OF ILLINOIS
DEPARTMENT OF TRANSPORTATION
SUBMITTED March 20, 2020
K Roberts Regional Engineer
May 8, 2020
J. A. Etk Engineer of Design and Environment
May 8, 2020
Director of Highways Project Implementation

PRINTED BY THE AUTHORITY
OF THE STATE OF ILLINOIS


GENERAL NOTES

1. PLAN DIMENSIONS AND DETAILS RELATIVE TO EXISTING STRUCTURES HAVE BEEN TAKEN FROM EXISTING PLANS AND ARE SUBJECT TO NOMINAL CONSTRUCTION VARIATIONS. IT SHALL BE THE CONTRACTOR'S RESPONSIBILITY TO VERIFY SUCH DIMENSIONS AND DETAILS IN THE FIELD, AND MAKE NECESSARY APPROVED ADJUSTMENTS PRIOR TO CONSTRUCTION OR ORDERING MATERIALS.
2. THE CONTRACTOR SHALL SECURE ANY LOCAL, STATE, COUNTY PERMITS NEEDED FOR THIS PROJECT.
3. THE CONTRACTOR SHALL PERFORM ALL CONSTRUCTION FOR THE PROJECT IN A MANNER AND SEQUENCE THAT ARE BASED ON ACCEPTED INDUSTRY STANDARDS THAT RECOGNIZE THE INTERACTION OF THE COMPONENTS THAT COMPRISE THE STRUCTURE, WITHOUT CAUSING DISTRESS, UNANTICIPATED MOVEMENTS OR IRREGULAR LOAD PATHS AS A RESULT OF THE CONSTRUCTION MEANS AND METHODS EMPLOYED.
4. CONSTRUCTION LOADS SHALL NOT EXCEED DESIGN LIVE LOAD. THE CONTRACTOR IS RESPONSIBLE FOR ALL DESIGN REQUIRED TO SUPPORT CONSTRUCTION EQUIPMENT USED IN CONSTRUCTING THIS PROJECT. SHORING AND RESHORING IS THE RESPONSIBILITY OF THE CONTRACTOR.
5. UTILITIES - LOCATIONS / INFORMATION ON PLANS
ILLINOIS STATE LAW REQUIRES A 48-HOUR NOTICE TO BE GIVEN TO UTILITIES BEFORE DIGGING. FIELD MARKING OF FACILITIES MAY BE OBTAINED BY CONTACTING J.U.L.I.E. OR FOR NON-MEMBERS, THE UTILITY COMPANY DIRECTLY. AGENCIES KNOWN TO HAVE FACILITIES WITHIN THE PROJECT AREA ARE AS FOLLOWS:

 - * Ameren Illinois (GAS & ELECTRIC)
 - * AT&T Illinois (COMMUNICATIONS)
 - * CenturyLink, Inc. (COMMUNICATIONS)
 - * City of East St. Louis (LIGHTING)
 - * ILLINOIS AMERICAN WATER CO. (WATER)

MEMBERS OF J.U.L.I.E. CALL TOLL FREE (800) 892-0123 OR 811 AND ARE INDICATED BY *. NON-J.U.L.I.E. MEMBERS MUST BE NOTIFIED INDIVIDUALLY
6. IT IS THE CONTRACTOR'S RESPONSIBILITY TO ENFORCE ALL APPLICABLE SAFETY CODES AND REGULATIONS DURING ALL PHASES OF CONSTRUCTION.
7. ALL CONTRACTORS ARE REQUIRED TO EXAMINE THE DRAWINGS AND SPECIAL PROVISIONS CAREFULLY, VISIT THE SITE AND FULLY INFORM THEMSELVES AS TO ALL EXISTING CONDITIONS AND LIMITATIONS, PRIOR TO AGREEING TO PERFORM THE WORK. FAILURE TO VISIT THE SITE AND FAMILIARIZE THEMSELVES WITH THE EXISTING CONDITIONS AND LIMITATIONS WILL IN NO WAY RELIEVE THE CONTRACTOR FROM FURNISHING ANY MATERIALS OR PERFORMING ANY WORK IN ACCORDANCE WITH THE DRAWINGS AND SPECIFICATIONS WITHOUT ADDITIONAL COST TO THE OWNER.
8. DURING CONSTRUCTION THE CONTRACTOR SHALL BE RESPONSIBLE FOR MAINTENANCE OF THE EXISTING PUMP STATION BUILDING.
9. DRAWINGS ARE NOT TO SCALE.
10. THE DEPARTMENT RESERVES THE RIGHT TO NOTIFY THE CONTRACTOR TO CHANGE THE CONSTRUCTION SCHEDULE IF NEEDED TO ENSURE PROPER DEWATERING NEEDS FOR THE DEPARTMENT.
11. THE DEPARTMENT STRONGLY ENCOURAGES THE PRIME CONTRACTOR AND THEIR APPROVED SUB-CONTRACTORS TO HIRE MINORITY, WOMEN AND DISADVANTAGED INDIVIDUALS FROM ITS FEDERALLY FUNDED HIGHWAY CONSTRUCTION CAREERS TRAINING PROGRAM (HCCTP) TO HELP MEET WORKFORCE AND TRAINEE GOALS. THIS PROGRAM IS TRAINING MINORITIES, WOMEN AND DISADVANTAGED INDIVIDUALS IN HIGHWAY CONSTRUCTION RELATED SKILLS, E.G., MATH FOR THE TRADES, JOB READINESS, TECHNICAL SKILLS COURSEWORK (CARPENTRY, CONCRETE FLATWORK, BLUEPRINT READING, SITE PLANS, SITE WORK, TOOLS USE, ETC.) AND OSHA 10 HOUR CERTIFICATION TO PREPARE THEM FOR A CAREER IN THE HIGHWAY CONSTRUCTION TRADES, GRADUATES ARE WELL TRAINED AND READY TO BECOME PRODUCTIVE ENTRY LEVEL CONSTRUCTION WORKERS. CONTACT THE DISTRICT 8 EEO OFFICE AT 618-346-3360 AND/OR THE HCTP COORDINATOR AT 618-874-6528 TO LEARN MORE ABOUT THE PROGRAM AND FOR ASSISTANCE IN MEETING WORKFORCE AND TRAINEE GOALS.

D:\B\Files\192019\Bowman_Ventilation\Sheets\0876N54-plt-Gennotes.dgn

 <p>KLINGNER & ASSOCIATES, P.C. Engineers • Architects • Surveyors 616 N. 24TH ST. QUINCY, ILLINOIS 62301 217.223.3670 STATE OF ILLINOIS DESIGN FIRM NO. 184-2738</p>	USER NAME = bgj	DESIGNED - AMS	REVISED -	STATE OF ILLINOIS DEPARTMENT OF TRANSPORTATION	BOWMAN PUMP STATION ELECTRICAL MODIFICATIONS GENERAL NOTES	F.A.I. RTE.	SECTION	COUNTY	TOTAL SHEETS	SHEET NO.
	PLOT SCALE = 2:0' = 1" / in.	CHECKED - JUN	REVISED -			70	82-2-IPS-5	ST CLAIR	15	2
PLOT DATE = 3/19/2020	DATE - 3/10/2020	REVISED -		SCALE: NTS SHEET 1 OF 1 SHEETS STA. TO STA.		ILLINOIS FED. AID PROJECT CONTRACT NO. 76N54				

ILLINOIS DEPARTMENT OF TRANSPORTATION
SUMMARY OF QUANTITIES

CODE NO.	ITEM	UNIT	100% STATE	CONSTRUCTION TYPE CODE		
			TOTAL QUANTITY	ST. CLAIR		
				0044		
				URBAN		
67100100	MOBILIZATION	L SUM	1	1		
X0783300	PUMP STATION ELECTRICAL WORK	L SUM	1	1		

D:\B\Files\192019\Bowman_Ventilation\Sheets\0876N54-ht-500.dgn

KLINGNER & ASSOCIATES, P.C.
Engineers • Architects • Surveyors
616 N. 24TH ST. QUINCY, ILLINOIS 62301 217.223.3670
STATE OF ILLINOIS DESIGN FIRM NO. 184-2738

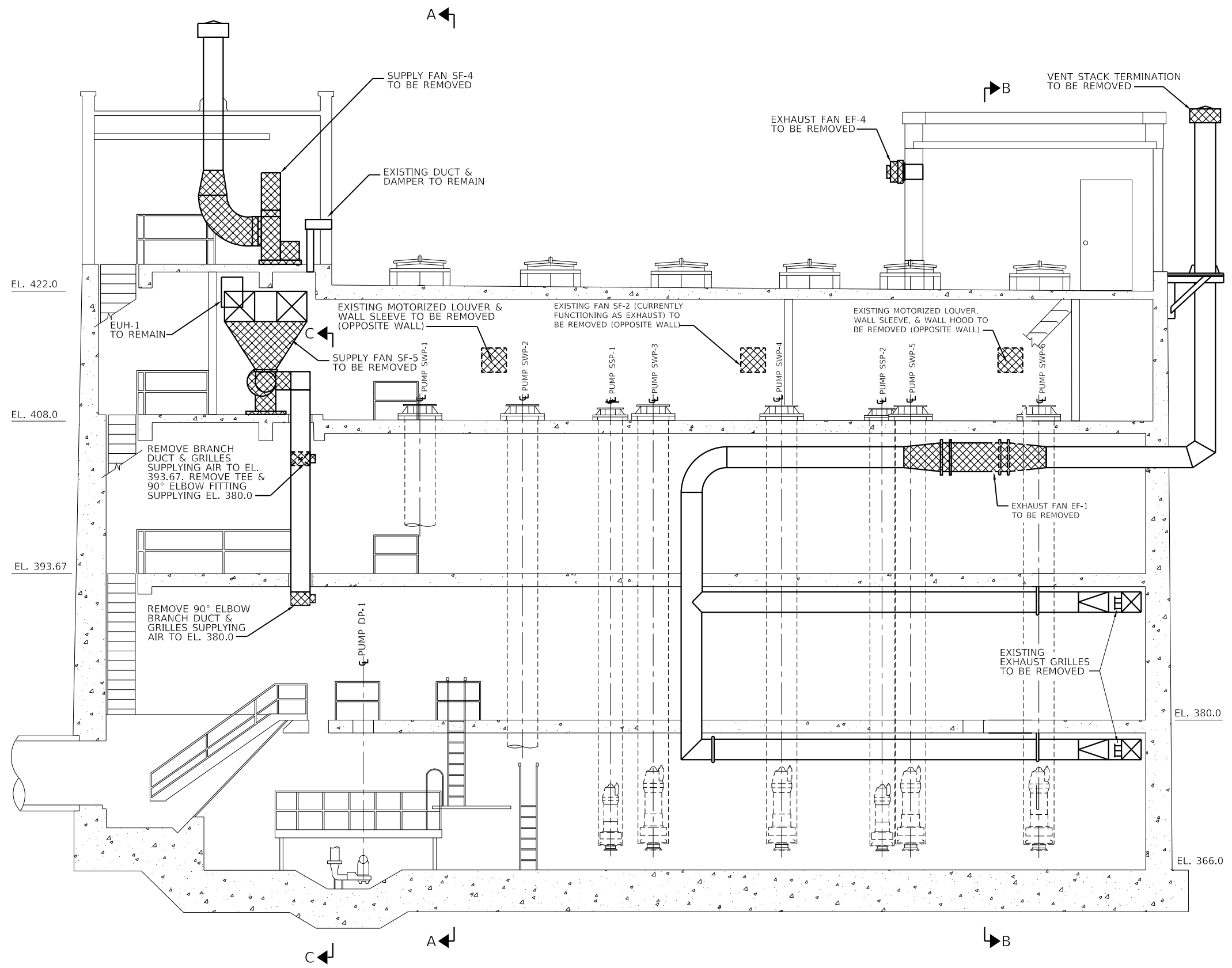
USER NAME = bgj	DESIGNED - AMS	REVISED -
	DRAWN - AMS	REVISED -
PLOT SCALE = 2:0' = 1" / in.	CHECKED - EBB	REVISED -
PLOT DATE = 3/19/2020	DATE -	REVISED -

**STATE OF ILLINOIS
DEPARTMENT OF TRANSPORTATION**

**BOWMAN PUMP STATION ELECTRICAL MODIFICATIONS
SUMMARY OF QUANTITIES**

SCALE: NTS SHEET 1 OF 1 SHEETS STA. TO STA.

F.A.I. RTE.	SECTION	COUNTY	TOTAL SHEETS	SHEET NO.
70	82-2-IPS-5	ST CLAIR	15	3
CONTRACT NO. 76N54			ILLINOIS FED. AID PROJECT	



Q:\B\Files\190198\Bowman_Ventilation\Sheets\087654-sh-1-Demo.dgn
 05 - Bowman Ventilation\Sheets\087654-sh-1-Demo.dgn
 616 N. 24TH ST. QUINCY, ILLINOIS 62301 217.223.3670
 STATE OF ILLINOIS DESIGN FIRM NO. 184-2738

KLINGNER & ASSOCIATES, P.C.
 Engineers • Architects • Surveyors
 616 N. 24TH ST. QUINCY, ILLINOIS 62301 217.223.3670
 STATE OF ILLINOIS DESIGN FIRM NO. 184-2738

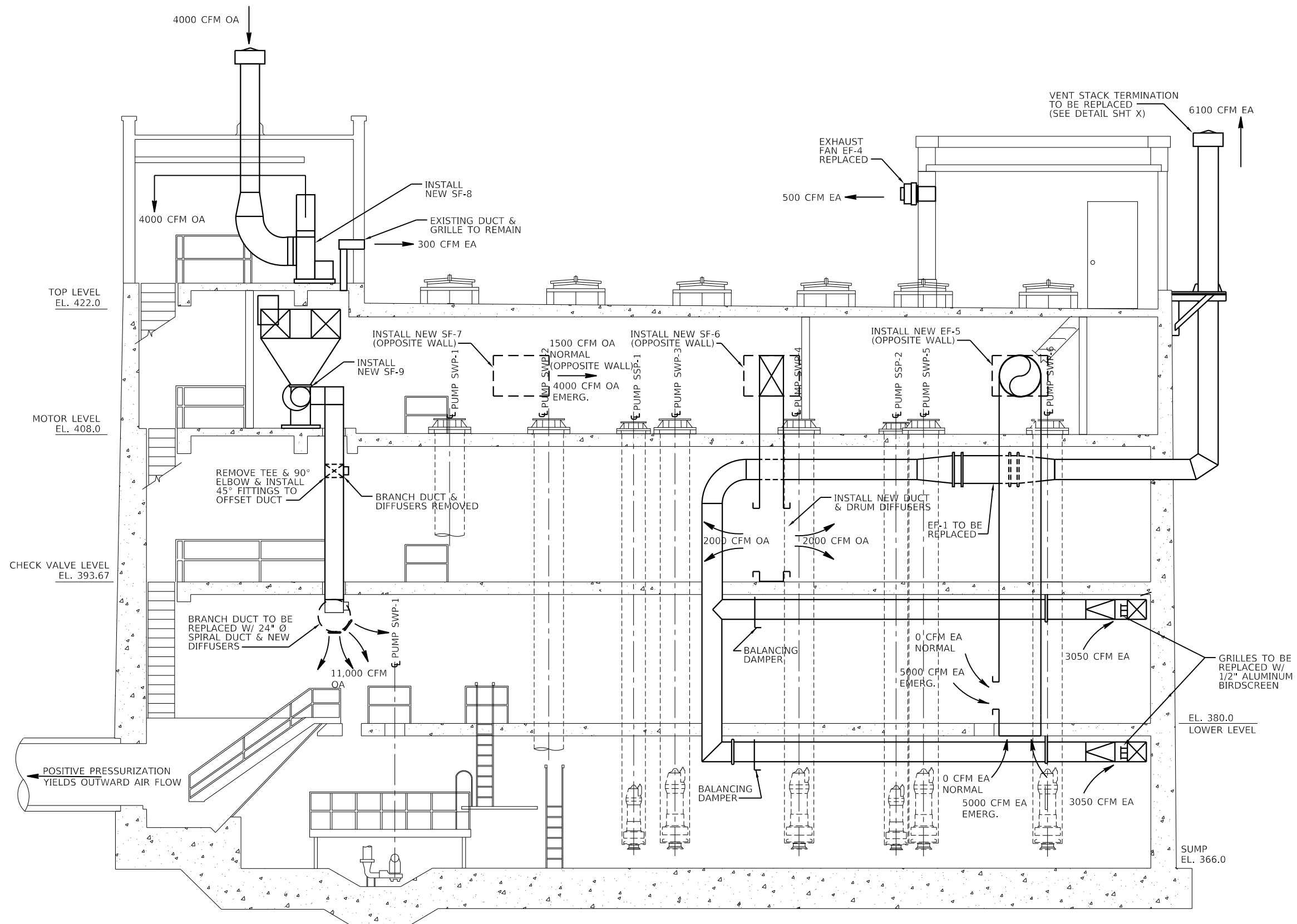
USER NAME = bgj	DESIGNED -	REVISED -
PLOT SCALE = 10.666662' / in.	DRAWN -	REVISED -
PLOT DATE = 3/19/2020	CHECKED -	REVISED -
	DATE -	REVISED -

**STATE OF ILLINOIS
 DEPARTMENT OF TRANSPORTATION**

**BOWMAN PUMP STATION ELECTRICAL MODIFICATIONS
 DEMOLITION SECTION**

SCALE: 3/16"=1'-0" SHEET 1 OF 6 SHEETS STA. TO STA.

F.A.I. RTE.	SECTION	COUNTY	TOTAL SHEETS	SHEET NO.
70	82-2-IPS-5	ST CLAIR	15	4
CONTRACT NO. 76N54				
ILLINOIS FED. AID PROJECT				



Q:\B\Files\190198\BOWMAN Ventilation\Sheets\087654-ht-Section1.dgn
 05 - Bowman Ventilation\Sheets\087654-ht-Section1.dgn

KLINGNER & ASSOCIATES, P.C.
 Engineers • Architects • Surveyors
 616 N. 24TH ST. QUINCY, ILLINOIS 62301 217.223.3670
 STATE OF ILLINOIS DESIGN FIRM NO. 184-2738

USER NAME = bgj
 PLOT SCALE = 10.666662 1/16"
 PLOT DATE = 3/19/2020

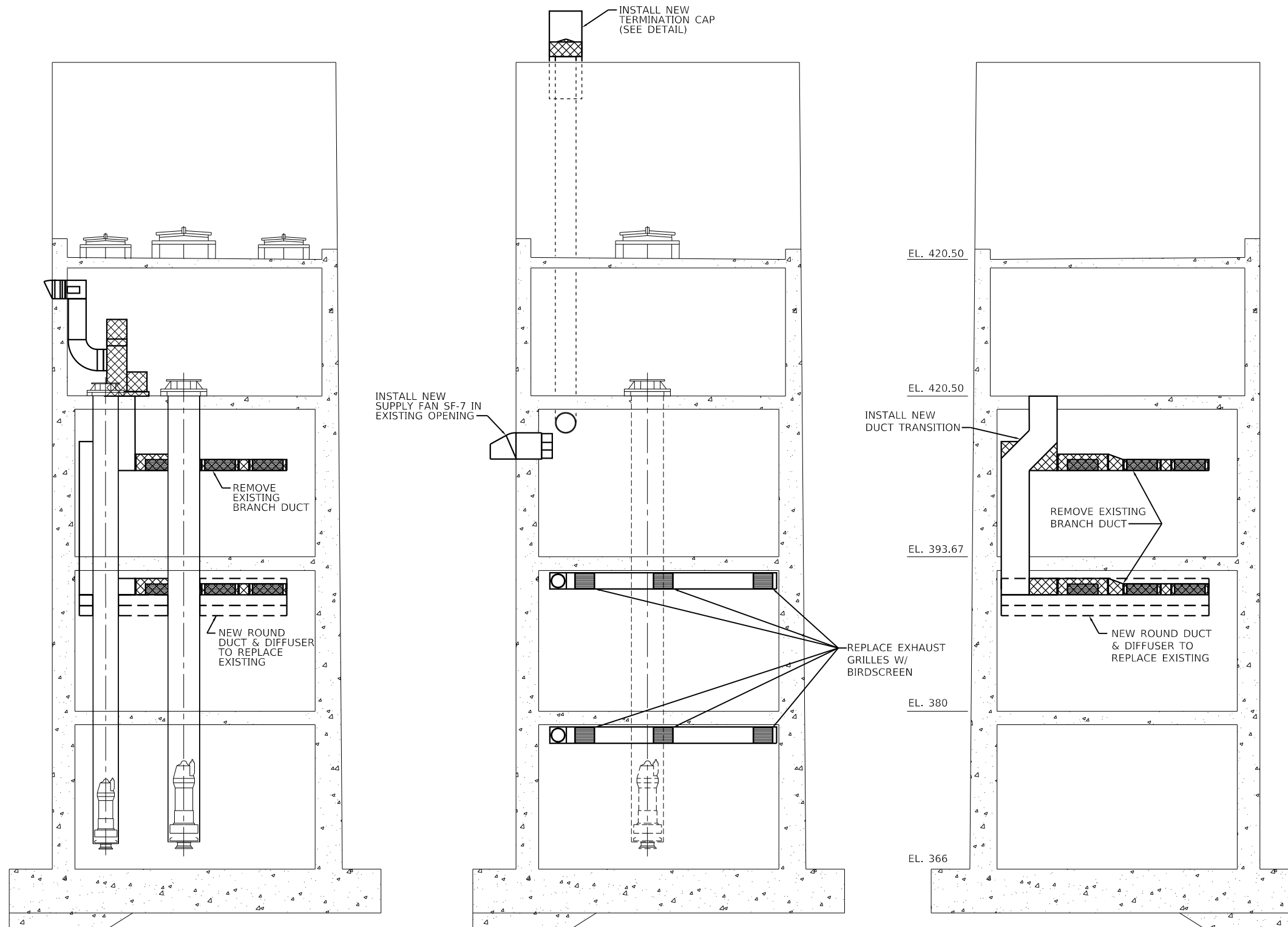
DESIGNED -	REVISED -
DRAWN -	REVISED -
CHECKED -	REVISED -
DATE -	REVISED -

STATE OF ILLINOIS
DEPARTMENT OF TRANSPORTATION

BOWMAN PUMP STATION ELECTRICAL MODIFICATIONS
VENTILATION SECTION

SCALE: 3/16"=1'-0" SHEET 2 OF 6 SHEETS STA. TO STA.

F.A.I. RTE.	SECTION	COUNTY	TOTAL SHEETS	SHEET NO.
70	82-2-IPS-5	ST CLAIR	15	5
CONTRACT NO. 76N54				
ILLINOIS FED. AID PROJECT				



SECTION A-A

SECTION B-B

SECTION C-C

D:\B\Files\190198\Bowman_Ventilation\Sheets\087654-ht-Section2.dgn

USER NAME = bgj	DESIGNED -	REVISED -
PLOT SCALE = 10.666662' / in.	DRAWN -	REVISED -
PLOT DATE = 3/19/2020	CHECKED -	REVISED -
	DATE -	REVISED -

F.A.I. RTE.	SECTION	COUNTY	TOTAL SHEETS	SHEET NO.
70	82-2-1PS-5	ST CLAIR	15	6
CONTRACT NO. 76N54				
ILLINOIS FED. AID PROJECT				

VENTILATION EQUIPMENT SCHEDULE

TAG	DESCRIPTION	LOCATION	ELECTRICAL					FAN					
			HP	RPM	VOLTS	PH	Hz	TYPE	CFM	SP	DRIVE	MTG	NOTES
SF-6	NEW SUPPLY FAN TO REPLACE SF-2	EL. 408.0	1.5	1750	460	3	60	IN-LINE CENTRIFUGAL SIDE DISCHARGE	4000	0.25	BELT	WALL	1
SF-7	NEW 2-SPEED SUPPLY FAN	EL. 408.0	0.75	875 / 1750	460	3	60	SIDEWALL PROPELLER	2050 / 4000	0.09 / 0.35	DIRECT	WALL	1, 2
SF-8	NEW SUPPLY FAN TO REPLACE SF-4	EL. 422.0	1.5	1750	460	3	60	IN-LINE CENTRIFUGAL SIDE DISCHARGE	4000	0.25	BELT	DUCT	1
SF-9	NEW SUPPLY FAN TO REPLACE SF-5	EL. 408.0	7.5	1750	460	3	60	UTILITY CENTRIFUGAL	11,000	2.0	BELT	DUCT	1
EF-4	NEW EXHAUST FAN	EL. 422.0	0.25	1550	120	1	60	SIDEWALL CENTRIFUGAL	500	0.375	DIRECT	WALL	1, 2
EF-5	NEW EXHAUST FAN	EL. 408.0	7.5	1550	460	3	60	TUBULAR CENTRIFUGAL	10,000	2.0	BELT	BELT	1

DIFFUSER SCHEDULE

TAG	DESCRIPTION	LOCATION	ELECTRICAL					FAN					
			HP	RPM	VOLTS	PH	Hz	TYPE	CFM	SP	DRIVE	MTG	NOTES
	DRUM DIFFUSER	N/A	N/A	N/A	N/A	N/A	N/A	ADJUSTABLE HEAVY GAUGE ALUMINUM					50" x 10"

NOTES:

- EQUIPMENT SHALL MEET REQUIREMENTS FOR NEC CLASS 1 DIV 2 GROUP D HAZARDOUS LOCATION.
- PROVIDE W/ WALL COLLAR, MOTOR GUARD, GRAVITY BACKDRAFT DAMPER, & 90° WEATHERHOOD

VENTILATION SEQUENCE OF OPERATION

NORMAL VENTILATION

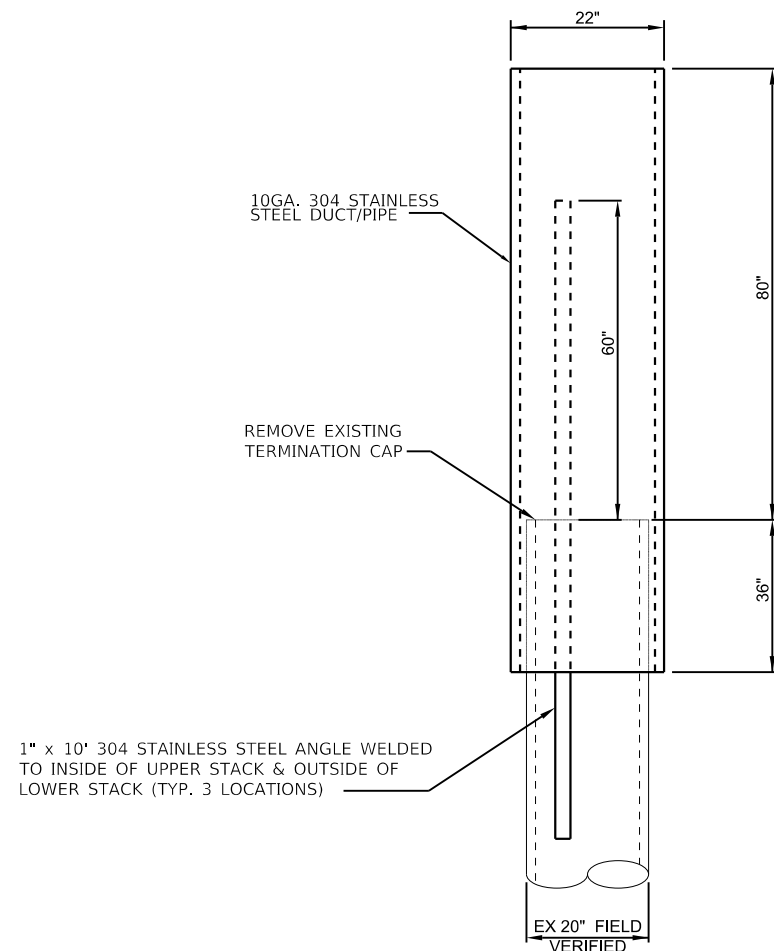
EXHAUST FANS EF-1& EF-4 SHALL OPERATE CONTINUOUSLY. SUPPLY FANS SF-6 & SF-8 SHALL OPERATE CONTINUOUSLY. SUPPLY FAN SF-7 SHALL OPERATE CONTINUOUSLY ON LOW SPEED.

EMERGENCY VENTILATION

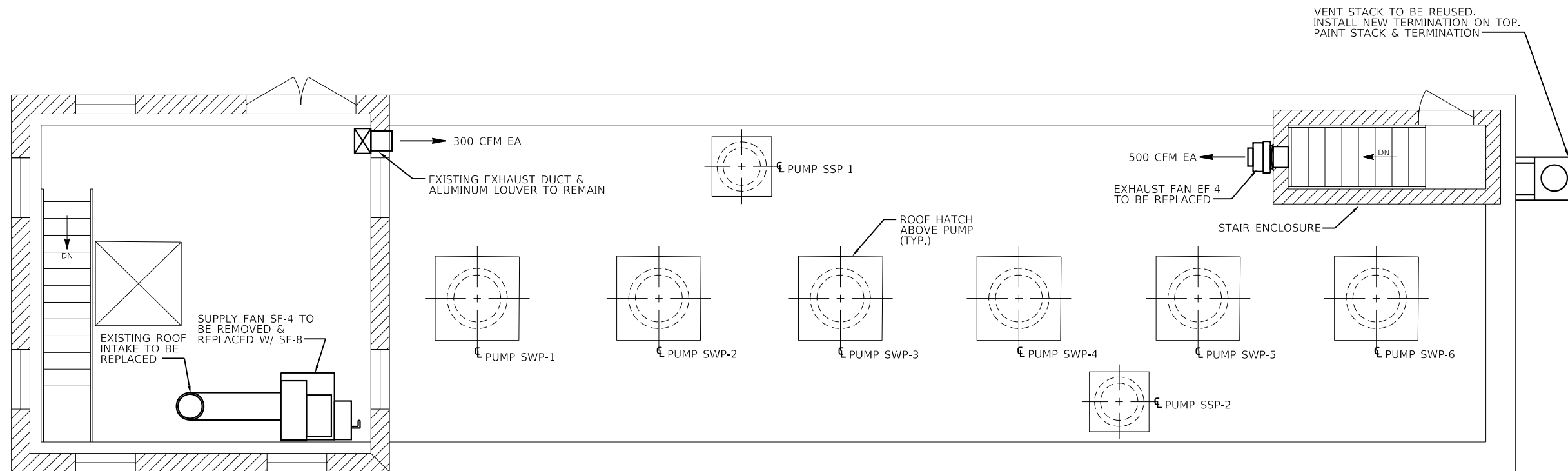
UPON COMBUSTIBLE GAS DETECTION EXHAUST FAN EF-5 SHALL TURN ON. SUPPLY FAN SF-9 SHALL TURN ON. SUPPLY FAN SF-7 SHALL SWITCH TO HIGH SPEED. THESE FANS SHALL TURN OFF WHEN COMBUSTIBLE GAS CONCENTRATION FALLS BELOW THE DETECTOR SETTING.

MANUAL OPERATION

A HAND-AUTO SWITCH SHALL BE INSTALLED AT EL. 408.0 ADJACENT TO THE STAIRWAY DOOR TO TURN ON EXHAUST FAN EF-5, SUPPLY FAN SF-9, AND SWITCH SUPPLY FAN SF-7 TO HIGH SPEED (ACTIVATES EMERGENCY VENTILATION RATES).



NEW TERMINATION FOR EXISTING VENT PIPE DETAIL
NO SCALE



FLOOR PLAN EL. 422.0

D:\B\Files\190198\Ventilation\Sheets\087654-ht-Plan1.dgn

KLINGNER & ASSOCIATES, P.C.
Engineers • Architects • Surveyors
616 N. 24TH ST. QUINCY, ILLINOIS 62301 217.223.3670
STATE OF ILLINOIS DESIGN FIRM NO. 184-2738

USER NAME = bgj
DESIGNED -
DRAWN -
CHECKED -
DATE -
PLOT SCALE = 7.999997' / in.
PLOT DATE = 3/19/2020

DESIGNED -
DRAWN -
CHECKED -
DATE -
REVISED -
REVISED -
REVISED -
REVISED -

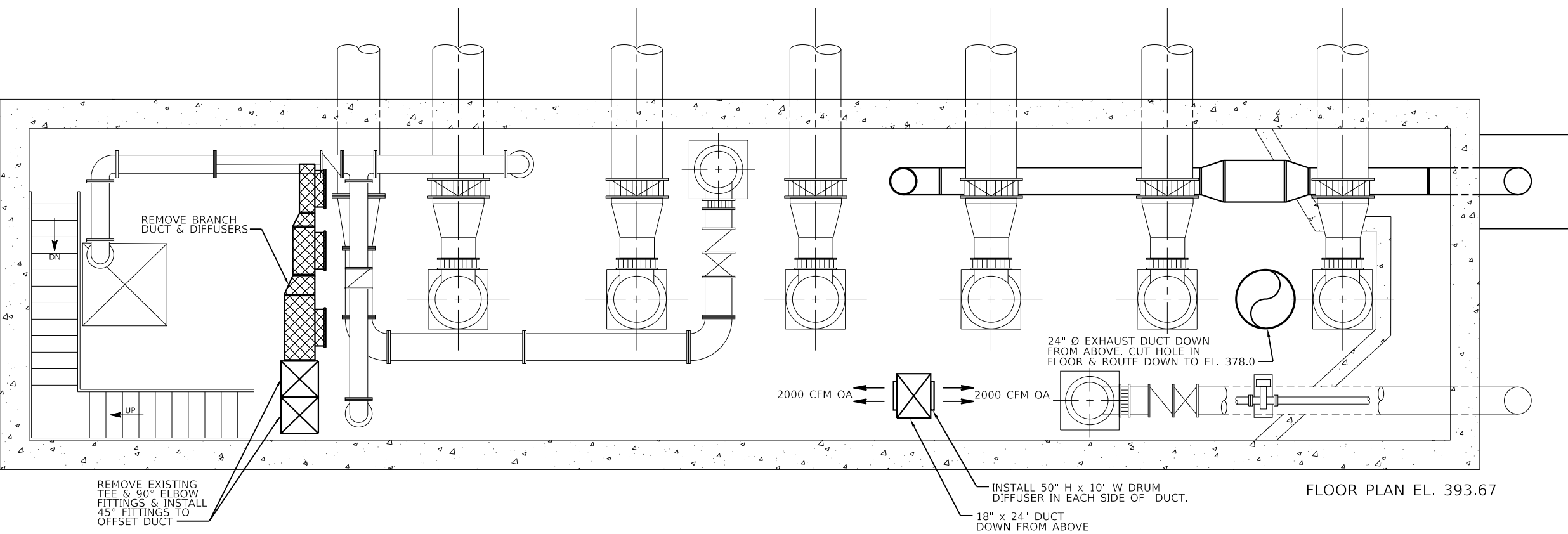
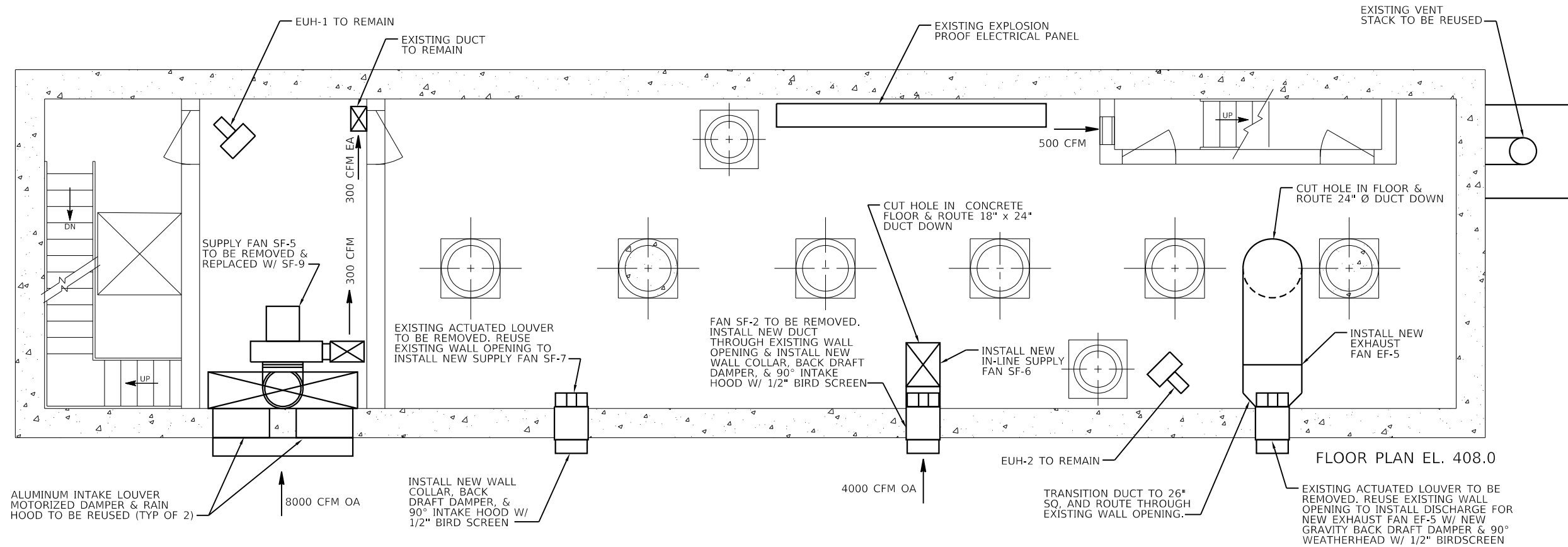
REVISED -
REVISED -
REVISED -
REVISED -

STATE OF ILLINOIS
DEPARTMENT OF TRANSPORTATION

BOWMAN PUMP STATION ELECTRICAL MODIFICATIONS
VENTILATION PLAN AT ELEVATION 422.0

SCALE: 1/4"=1'-0" SHEET 4 OF 6 SHEETS STA. TO STA.

F.A.I. RTE.	SECTION	COUNTY	TOTAL SHEETS	SHEET NO.
70	82-2-1PS-5	ST CLAIR	15	7
CONTRACT NO. 76N54				
ILLINOIS FED. AID PROJECT				



Q:\B\Files\190198\Bowman_Ventilation\Sheets\087654-sh-Plan2.dgn
 616 N. 24TH ST. QUINCY, ILLINOIS 62301 217.223-3670
 STATE OF ILLINOIS DESIGN FIRM NO. 184-2738

KLINGNER & ASSOCIATES, P.C.
 Engineers • Architects • Surveyors
 616 N. 24TH ST. QUINCY, ILLINOIS 62301 217.223-3670
 STATE OF ILLINOIS DESIGN FIRM NO. 184-2738

USER NAME = bgj
 PLOT SCALE = 7.99997' / in.
 PLOT DATE = 3/19/2020

DESIGNED -
 DRAWN -
 CHECKED -
 DATE -

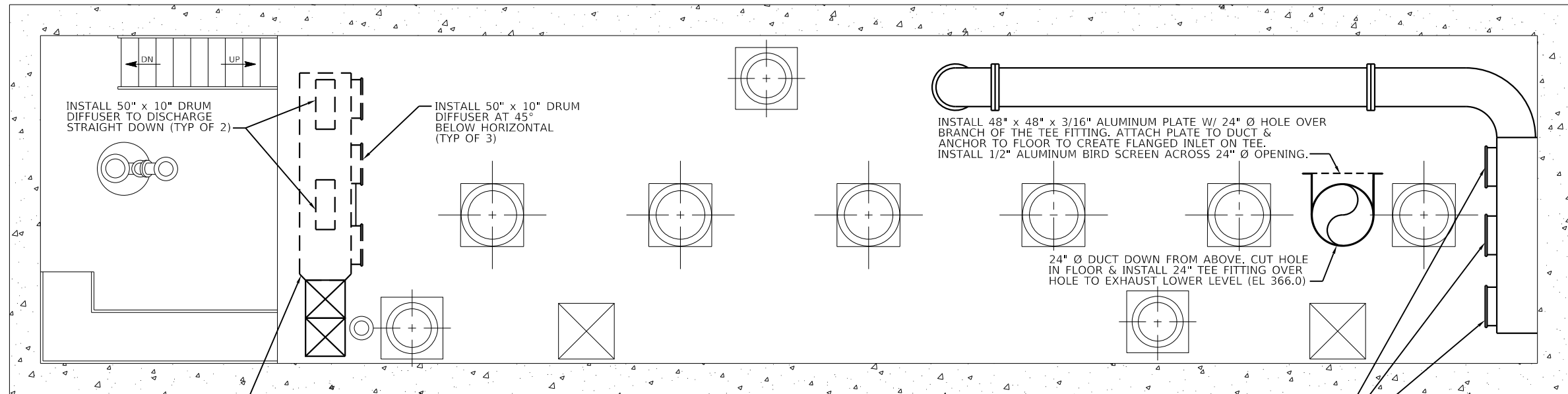
REVISED -
 REVISED -
 REVISED -
 REVISED -

**STATE OF ILLINOIS
 DEPARTMENT OF TRANSPORTATION**

**BOWMAN PUMP STATION ELECTRICAL MODIFICATIONS
 VENTILATION PLAN AT EL 393.67, EL 408.0**

SCALE: 1/4" = 1'-0" SHEET 5 OF 6 SHEETS STA. TO STA.

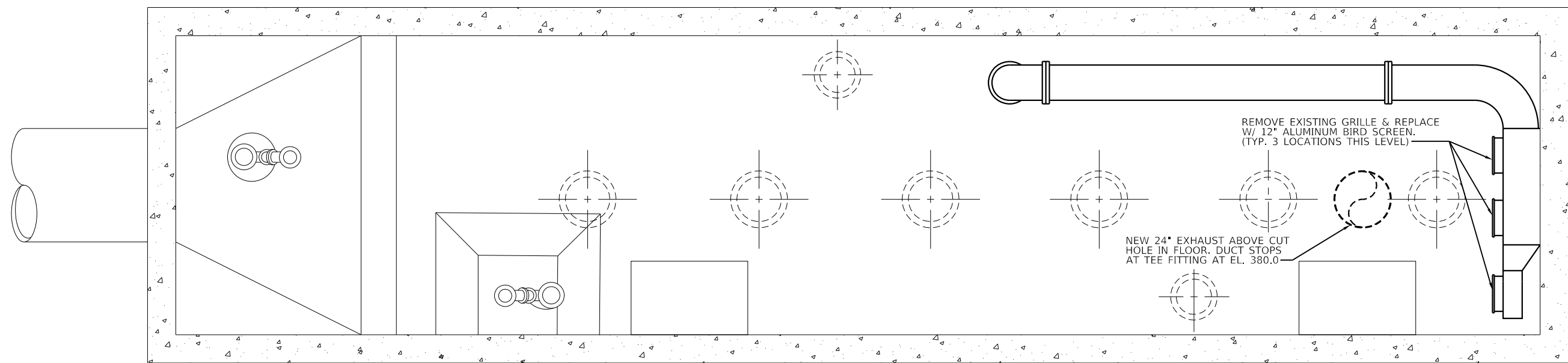
F.A.I. RTE.	SECTION	COUNTY	TOTAL SHEETS	SHEET NO.
70	82-2-1PS-5	ST CLAIR	15	8
CONTRACT NO. 76N54				
ILLINOIS FED. AID PROJECT				



REMOVE 90° ELBOW, BRANCH DUCT, DIFFUSERS, AND REPLACE W/ NEW ELBOW & TRANSITION TO 24" Ø DUCT.

REMOVE EXISTING GRILLE & REPLACE W/ 1/2" ALUMINUM BIRD SCREEN (TYP. 3 LOCATIONS THIS LEVEL)

FLOOR PLAN EL. 380.0



REMOVE EXISTING GRILLE & REPLACE W/ 1/2" ALUMINUM BIRD SCREEN. (TYP. 3 LOCATIONS THIS LEVEL)

NEW 24" EXHAUST ABOVE CUT HOLE IN FLOOR. DUCT STOPS AT TEE FITTING AT EL. 380.0

FLOOR PLAN EL. 366.0

D:\B\Files\192019\Bowman_Ventilation\Sheets\087654-shr-Plan3.dgn

KLINGNER & ASSOCIATES, P.C.
 Engineers • Architects • Surveyors
 616 N. 24TH ST. QUINCY, ILLINOIS 62301 217.223.3670
 STATE OF ILLINOIS DESIGN FIRM NO. 184-2738

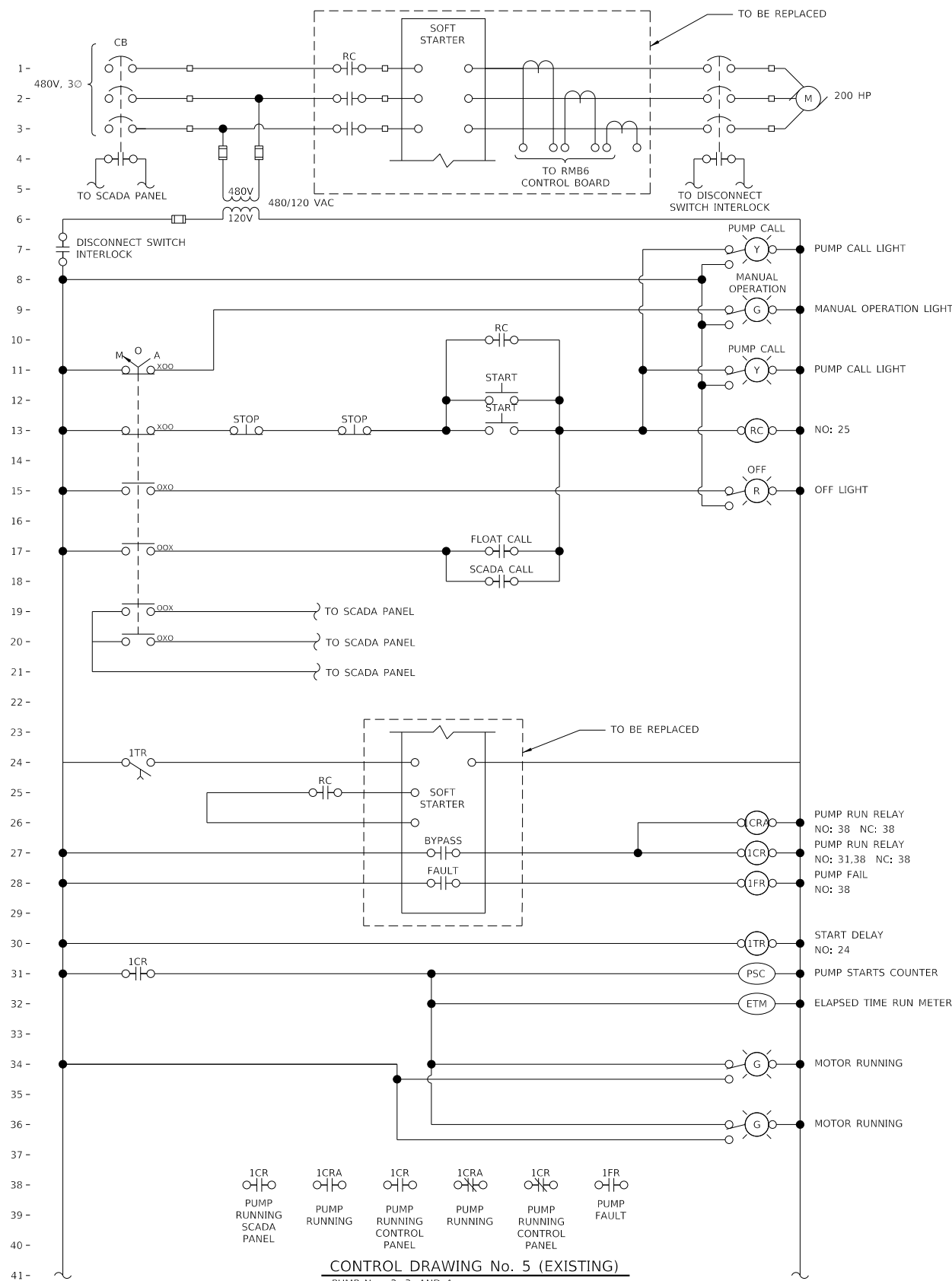
USER NAME = bgj	DESIGNED -	REVISED -
PLOT SCALE = 7.999997' / in.	DRAWN -	REVISED -
PLOT DATE = 3/19/2020	CHECKED -	REVISED -
	DATE -	REVISED -

**STATE OF ILLINOIS
DEPARTMENT OF TRANSPORTATION**

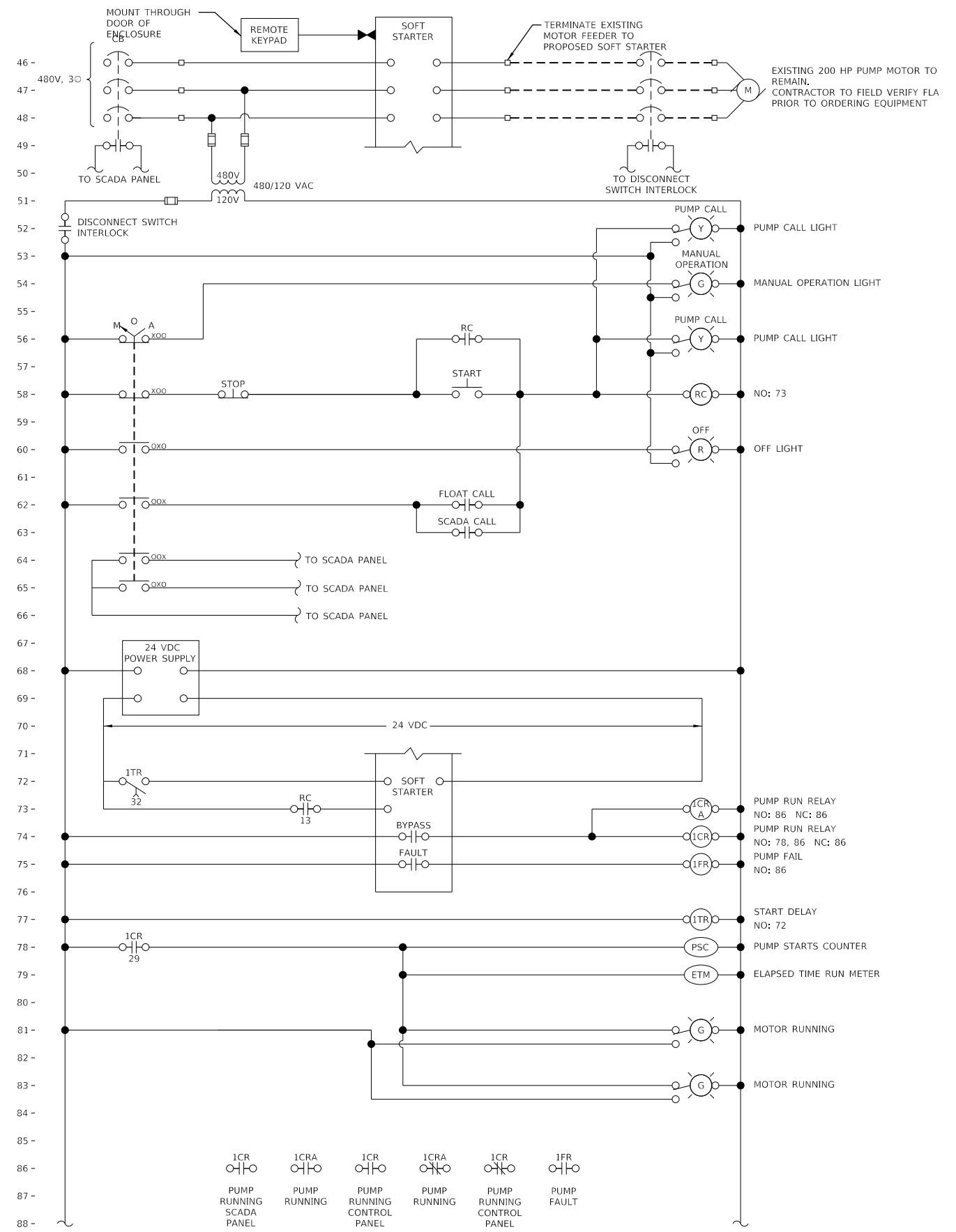
**BOWMAN PUMP STATION ELECTRICAL MODIFICATIONS
VENTILATION PLAN AT EL 366.0, EL 380.0**

SCALE: 1/4"=1'-0" SHEET 6 OF 6 SHEETS STA. TO STA.

F.A.I. RTE.	SECTION	COUNTY	TOTAL SHEETS	SHEET NO.
70	82-2-1PS-5	ST CLAIR	15	9
CONTRACT NO. 76N54				
ILLINOIS FED. AID PROJECT				



CONTROL DRAWING No. 5 (EXISTING)
PUMP Nos. 2, 3, AND 4

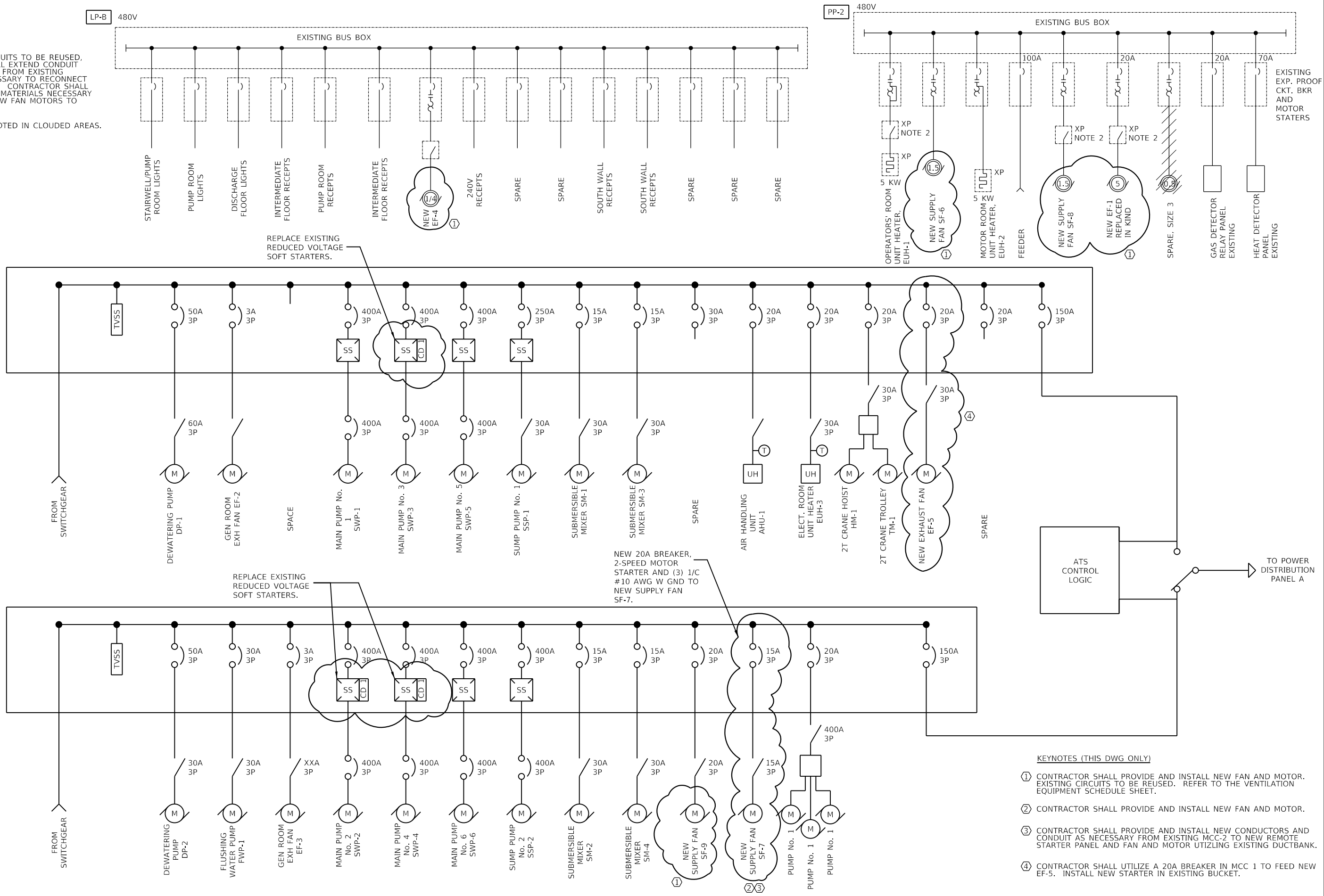


CONTROL DRAWING No. 6 (PROPOSED)
PUMP Nos. 2, 3 AND 4

D:\BFL\190198\Work Order 05 - Bowman Ventilation\Sheets\07654-ht-Schematic.dgn

GENERAL NOTES:

- FOR EXISTING CIRCUITS TO BE REUSED, CONTRACTOR SHALL EXTEND CONDUIT AND CONDUCTORS FROM EXISTING CIRCUITS AS NECESSARY TO RECONNECT NEW FAN MOTORS. CONTRACTOR SHALL PROVIDE ALL NEW MATERIALS NECESSARY TO RECONNECT NEW FAN MOTORS TO EXISTING CIRCUITS.
- WORK SCOPE DENOTED IN CLOUDED AREAS.

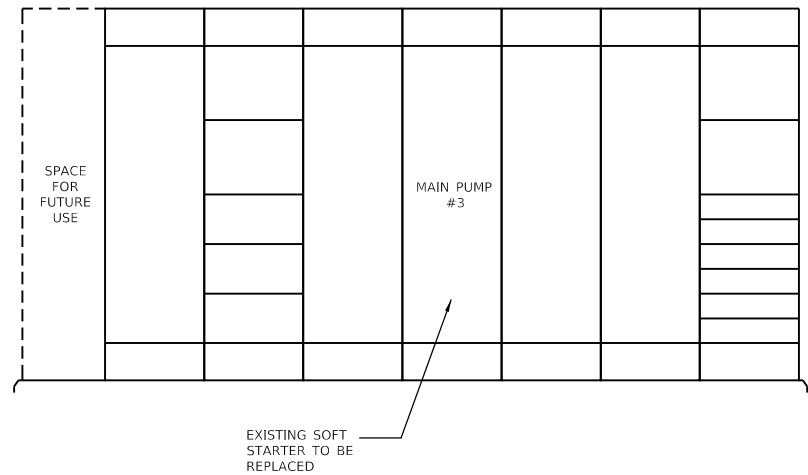


- KEYNOTES (THIS DWG ONLY)**
- CONTRACTOR SHALL PROVIDE AND INSTALL NEW FAN AND MOTOR. EXISTING CIRCUITS TO BE REUSED. REFER TO THE VENTILATION EQUIPMENT SCHEDULE SHEET.
 - CONTRACTOR SHALL PROVIDE AND INSTALL NEW FAN AND MOTOR.
 - CONTRACTOR SHALL PROVIDE AND INSTALL NEW CONDUCTORS AND CONDUIT AS NECESSARY FROM EXISTING MCC-2 TO NEW REMOTE STARTER PANEL AND FAN AND MOTOR UTILIZING EXISTING DUCTBANK.
 - CONTRACTOR SHALL UTILIZE A 20A BREAKER IN MCC 1 TO FEED NEW EF-5. INSTALL NEW STARTER IN EXISTING BUCKET.

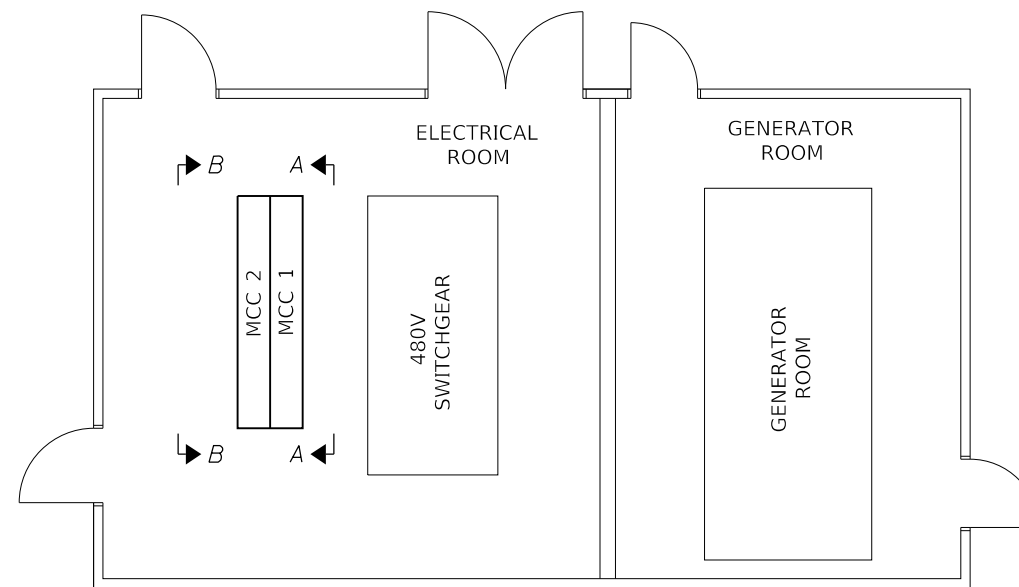
D:\B\Files\180189\Work - Bowman Ventilation\Sheets\087654-ht-Diagram.dgn

USER NAME = bgj	DESIGNED -	REVISED -
PLOT SCALE = 2 1/8" = 1'-0"	DRAWN -	REVISED -
PLOT DATE = 3/19/2020	CHECKED -	REVISED -
	DATE -	REVISED -

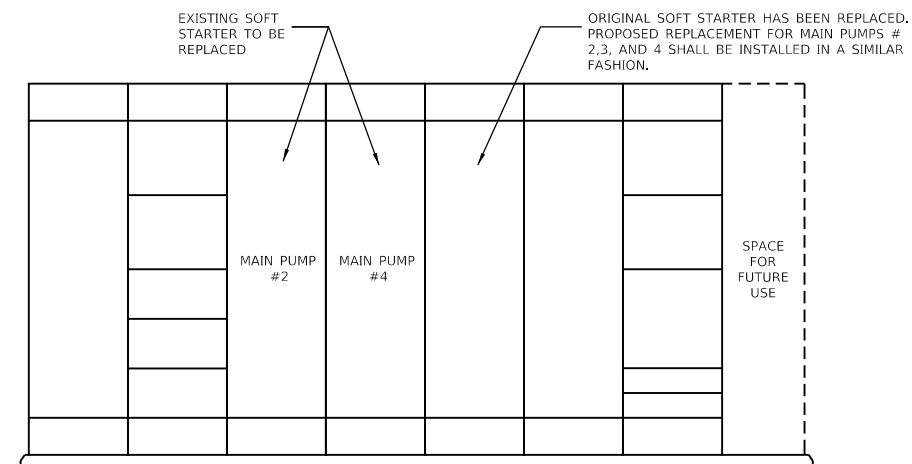
F.A.I. RTE. 70	SECTION 82-2-1PS-5	COUNTY ST CLAIR	TOTAL SHEETS 15	SHEET NO. 11
CONTRACT NO. 76N54				
ILLINOIS FED. AID PROJECT				



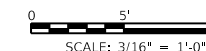
SECTION A-A (MCC 1 ELEVATION)
N.T.S.



ELECTRICAL ROOM PLAN VIEW
SCALE: 3/16" = 1'-0"



SECTION B-B (MCC 2 ELEVATION)
N.T.S.



D:\B\Files\190198\Work-Order-05 - Bowman Ventilation\Sheets\087654-sh-Plan.dgn

KLINGNER & ASSOCIATES, P.C.
Engineers • Architects • Surveyors
616 N. 24TH ST. QUINCY, ILLINOIS 62301 217.223.3670
STATE OF ILLINOIS DESIGN FIRM NO. 184-2738

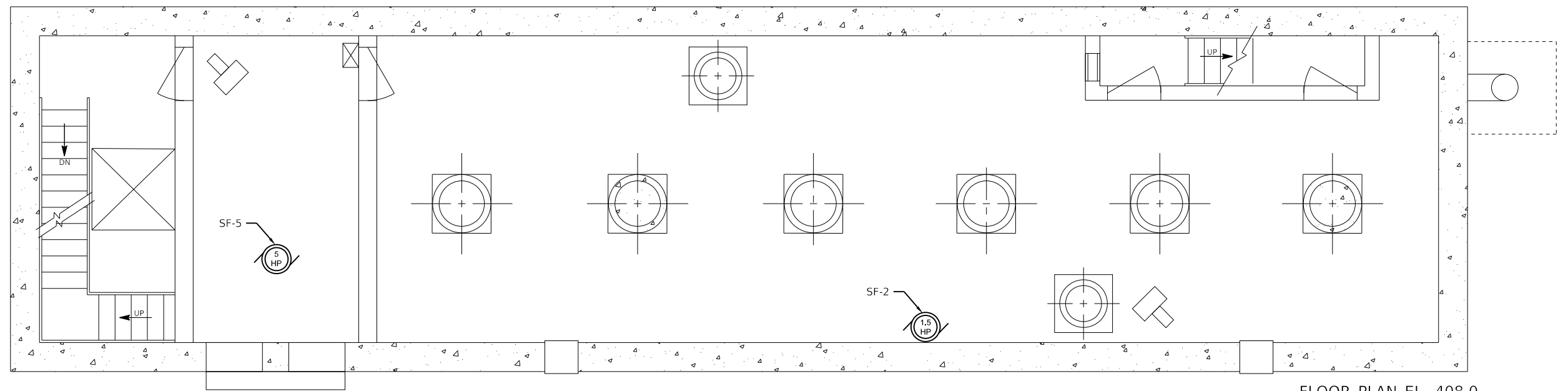
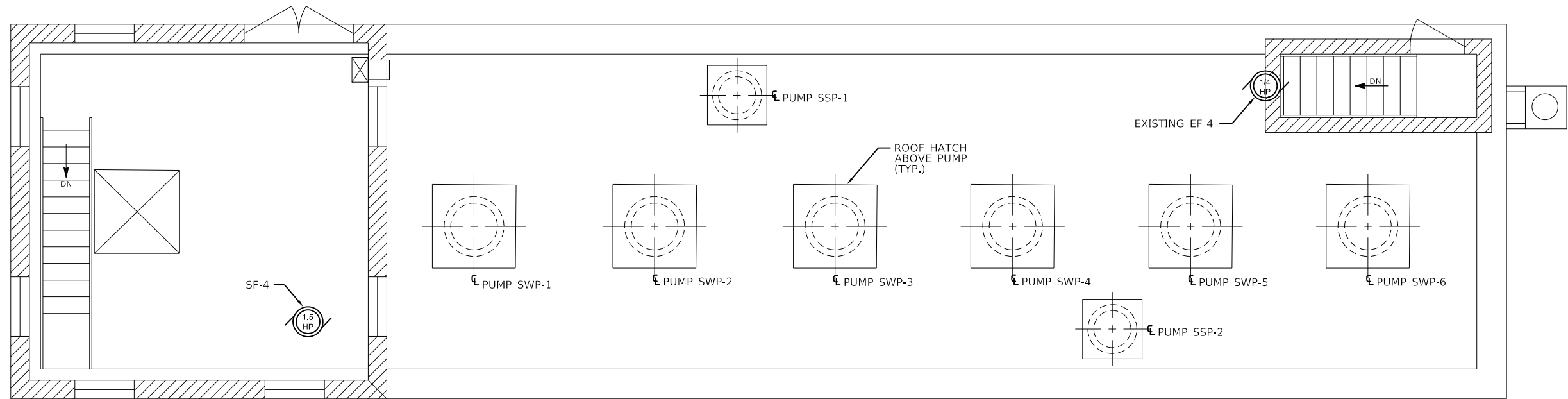
USER NAME = bgj	DESIGNED -	REVISED -
	DRAWN -	REVISED -
PLOT SCALE = 0:1 7/8" in / in.	CHECKED -	REVISED -
PLOT DATE = 3/19/2020	DATE -	REVISED -

**STATE OF ILLINOIS
DEPARTMENT OF TRANSPORTATION**

**BOWMAN PUMP STATION ELECTRICAL MODIFICATIONS
ELECTRICAL PLAN**

SCALE: SHEET 3 OF 6 SHEETS STA. TO STA.

F.A.I. RTE.	SECTION	COUNTY	TOTAL SHEETS	SHEET NO.
70	82-2-IPS-5	ST CLAIR	15	12
CONTRACT NO. 76N54				
ILLINOIS FED. AID PROJECT				



D:\B\Files\190198\Work-Order-05 - Bowman Ventilation\Sheets\087654-shr-Plan5.dgn

KLINGNER & ASSOCIATES, P.C.
 Engineers • Architects • Surveyors
 616 N. 24TH ST. QUINCY, ILLINOIS 62301 217.223.3670
 STATE OF ILLINOIS DESIGN FIRM NO. 184-2738

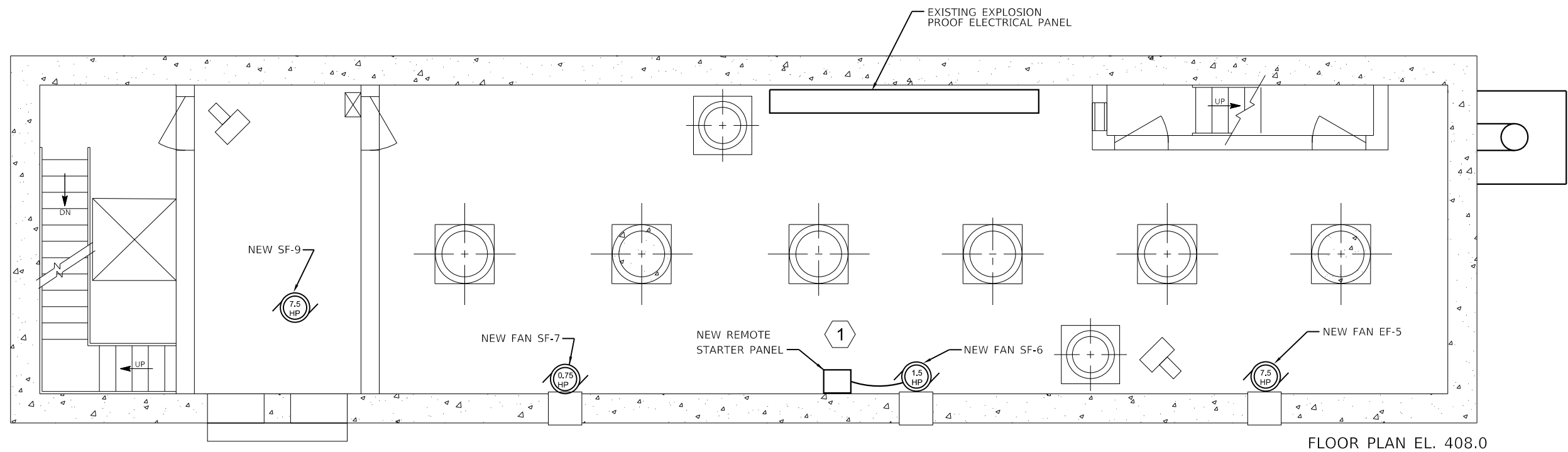
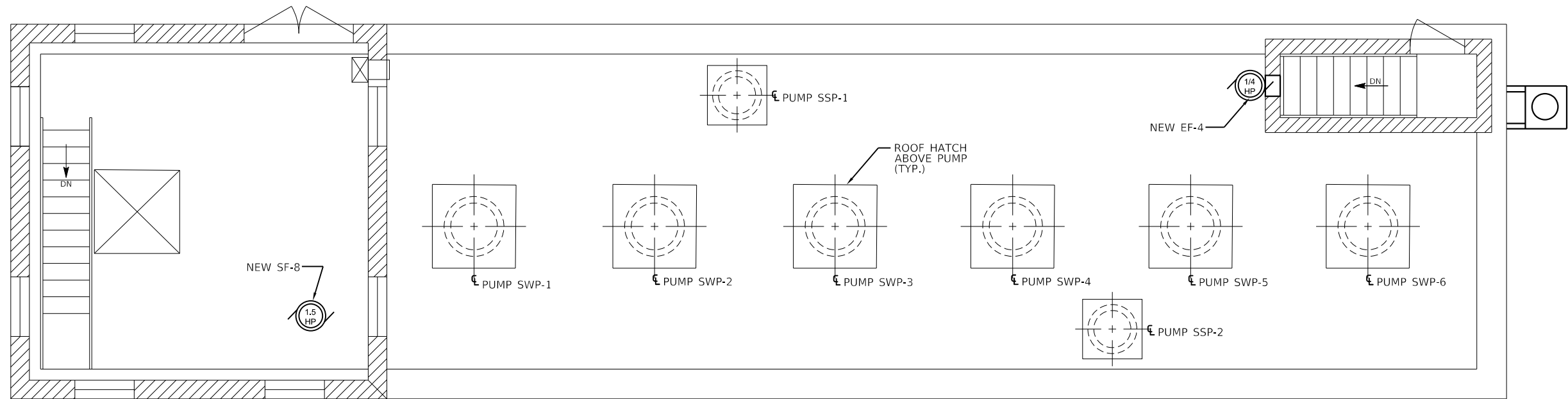
USER NAME = bgj	DESIGNED -	REVISED -
PLOT SCALE = 7.999997' / in.	DRAWN -	REVISED -
PLOT DATE = 3/19/2020	CHECKED -	REVISED -
	DATE -	REVISED -

**STATE OF ILLINOIS
 DEPARTMENT OF TRANSPORTATION**

**BOWMAN PUMP STATION ELECTRICAL MODIFICATIONS
 EXISTING PUMP ROOM PLAN**

SCALE: 1/4"=1'-0" SHEET 4 OF 6 SHEETS STA. TO STA.

F.A.I. RTE.	SECTION	COUNTY	TOTAL SHEETS	SHEET NO.
70	82-2-IPS-5	ST CLAIR	15	13
CONTRACT NO. 76N54				
ILLINOIS FED. AID PROJECT				



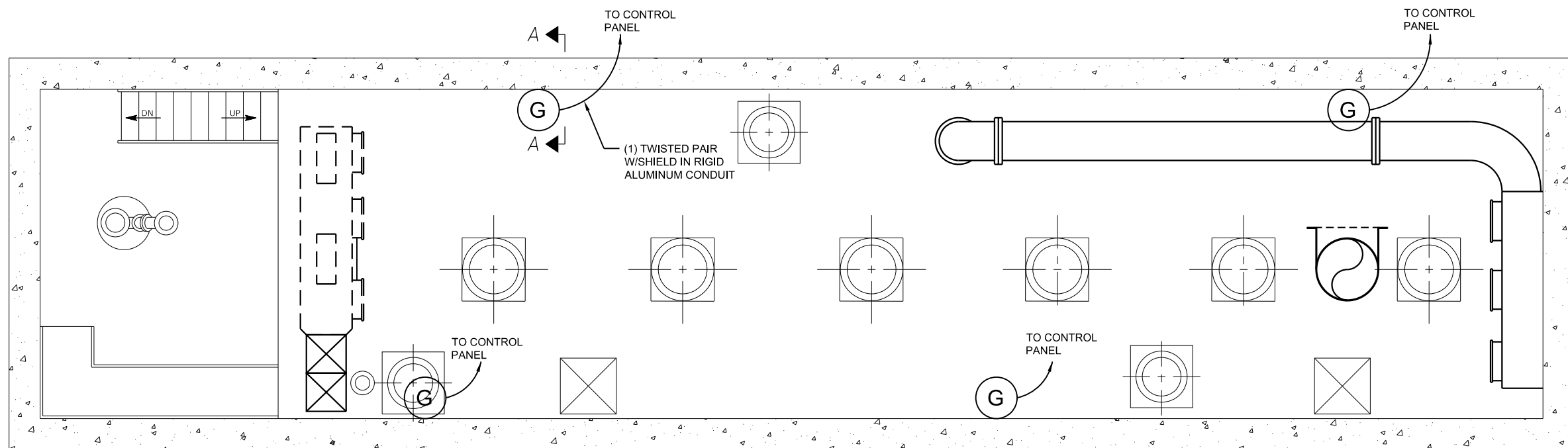
KEYNOTES:

- 1 CONTRACTOR SHALL PROVIDE AND INSTALL REMOTE STARTER PANEL FOR NEW SF-6.

D:\B\Files\190198\Work Order 05 - Bowman Ventilation\Sheets\087654-shr-Plan6.dgn

USER NAME = bgj	DESIGNED -	REVISED -
PLOT SCALE = 7.999997' / in.	DRAWN -	REVISED -
PLOT DATE = 3/19/2020	CHECKED -	REVISED -
	DATE -	REVISED -

F.A.I. RTE. 70	SECTION 82-2-IPS-5	COUNTY ST CLAIR	TOTAL SHEETS 15	SHEET NO. 14
CONTRACT NO. 76N54				
ILLINOIS FED. AID PROJECT				

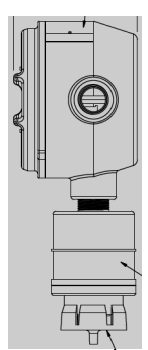


FLOOR PLAN EL. 380.0

DETECTOR SCHEDULE				
(G)	MANUFACTURER	MODEL	VOLTAGE	SENSOR TYPE
(G)	MSA MINE SAFETY APPLIANCES CO.	ULTIMA XE	12V	COMBUSTIBLE

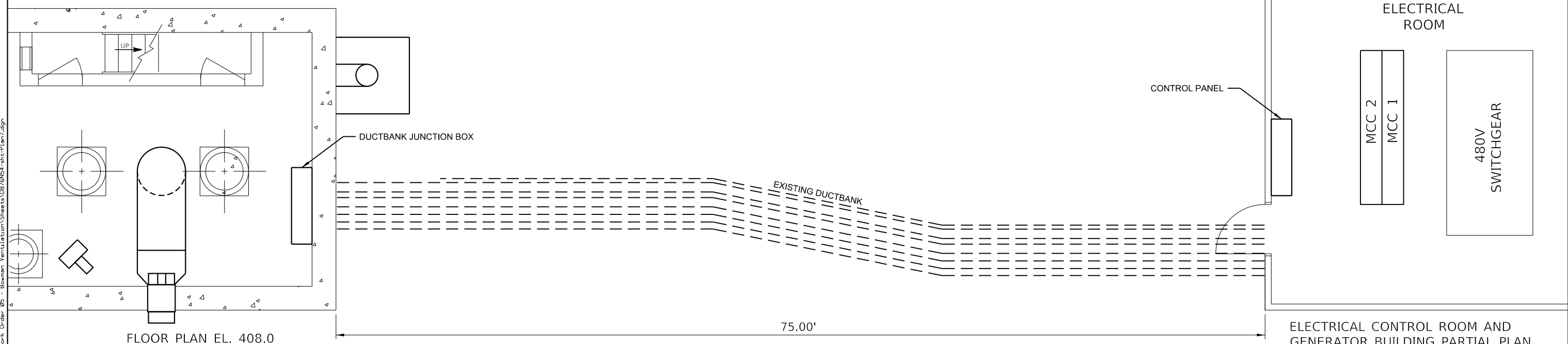
GENERAL NOTES:

1. CONTRACTOR SHALL PURCHASE AND INSTALL ALL CONDUIT AND WIRING TO FIELD ROUTE NEW GAS DETECTORS TO THE EXISTING CONTROL PANEL IN THE MCC ROOM UTILIZING SPACE CONDUIT IN DUCT BANK.
2. CONTRACTOR SHALL FIELD VERIFY ALL LINE LENGTHS BEFORE ORDERING MATERIALS.
3. CONTRACTOR SHALL BE RESPONSIBLE FOR INTEGRATING THE NEW DETECTORS WITH THE EXISTING CONTROL PANEL AND PROVIDE A COMPLETE, WORKING SYSTEM.
4. CONTRACTOR SHALL FOLLOW THE MOST RECENT EDITION OF NEC.
5. CONTRACTOR SHALL COMBINE DETECTOR WIRING IN CONDUIT WHERE POSSIBLE TO MINIMIZE MATERIALS.
6. MINIMUM CONDUIT SIZE 3/4". ALL CONDUIT SHALL BE RIGID ALUMINUM.



MOUNT WITH SENSOR INLET FACING DOWN 18" FROM FLOOR.

SECTION A-A
NO SCALE



FLOOR PLAN EL. 408.0

ELECTRICAL CONTROL ROOM AND GENERATOR BUILDING PARTIAL PLAN

KLINGNER & ASSOCIATES, P.C.
Engineers • Architects • Surveyors
616 N. 24TH ST. QUINCY, ILLINOIS 62301 217.223.3670
STATE OF ILLINOIS DESIGN FIRM NO. 184-2738

USER NAME = bgj	DESIGNED -	REVISED -
PLOT SCALE = 7.999997' / in.	DRAWN -	REVISED -
PLOT DATE = 3/19/2020	CHECKED -	REVISED -
	DATE -	REVISED -

STATE OF ILLINOIS
DEPARTMENT OF TRANSPORTATION

BOWMAN PUMP STATION ELECTRICAL MODIFICATIONS
ELECTRICAL PLAN AT ELEVATION 380.0

SCALE: 1/4"=1'-0" SHEET 6 OF 6 SHEETS STA. TO STA.

F.A.I. RTE. 70	SECTION 82-2-1PS-5	COUNTY ST CLAIR	TOTAL SHEETS 15	SHEET NO. 15
CONTRACT NO. 76N54				
ILLINOIS FED. AID PROJECT				