

STATE OF ILLINOIS
DEPARTMENT OF TRANSPORTATION

PLANS FOR PROPOSED
FEDERAL AID HIGHWAY

FA ROUTE 2 (IL. ROUTE 100)

SECTION (403,404)RS-1,405RS

MADISON COUNTY

RESURFACING

C-96-009-91

ALTON TOWNSHIP & GODFREY TOWNSHIP



END SECTION (403,404)RS-1,405RS
STATION 302+07.73

BEGIN SECTION (403,404)RS-1,405RS
STATION 17+99.00

STATE OF ILLINOIS R.R. CO. 22101-13 RT.

MICROFILMED _____
REEL NUMBER _____
AWARDED _____
RESIDENT ENGINEER _____
AS BUILT CHANGES WERE MADE
ON THE FOLLOWING SHEETS _____

LOCATION MAP

GRAPHIC SCALE



SHEET NO.	SEC.	COUNTY	TOTAL SHEETS	SHEET NO.
2	*	MADISON	70	1
		ILLINOIS	PROJECT	

* (403, 404)RS-1,405RS

D-98-055-90



STATE OF ILLINOIS
DEPARTMENT OF TRANSPORTATION

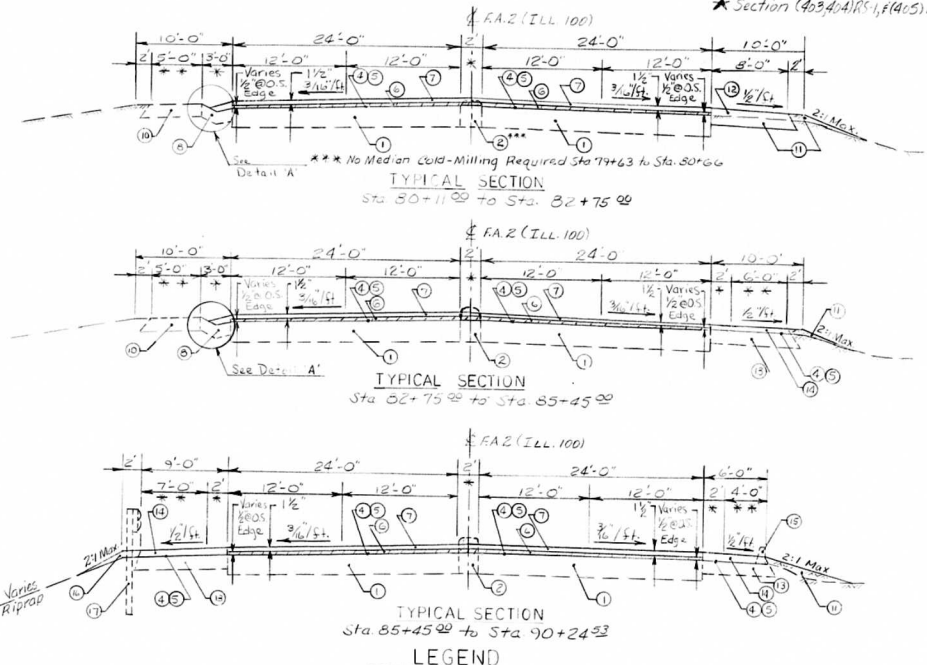
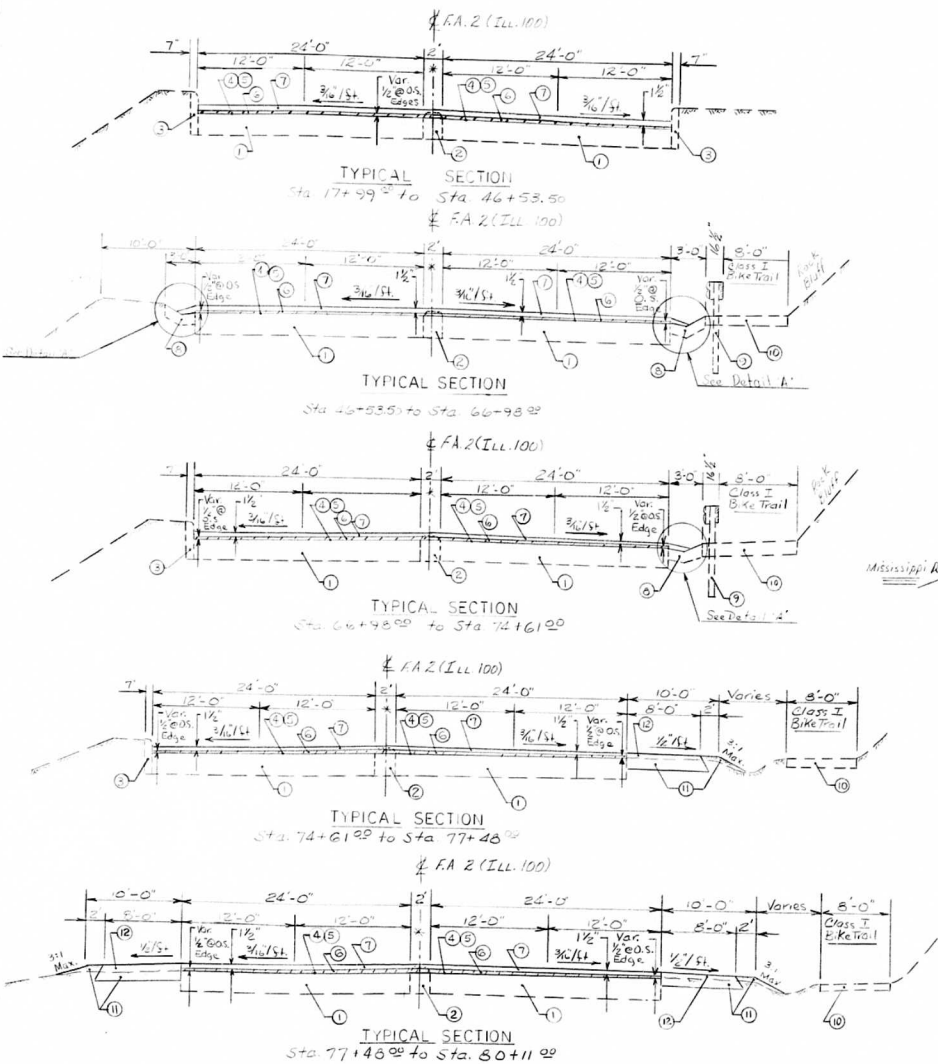
SUBMITTED August 7, 1995
Kathleen A. ...
EXAMINED Gary D. ...
PASSED ...
APPROVED ...

GROSS LENGTH OF SECTION 28,408.73 FEET = 5.360 MILES
NET LENGTH OF SECTION 28,390.73 FEET = 5.377 MILES

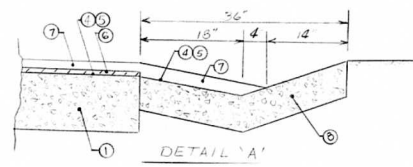
* - Stripes Buffer Zone
 ** - Class I Bicycle Trail

SHEET NO.	SECTION	COUNTY	TOTAL SHEETS	SHEET NO.
FA 2	*	Madison	70	4

* Section (423, 404) RS-1, (FA) 5 RS



- LEGEND**
- ① Existing Pavement
 - ② Proposed Bituminous Shoulder, 6"
 - ③ Existing Concrete Median to be Cold-Milled Flush
 - ④ Existing Concrete Curb to Remain in Place
 - ⑤ Proposed Bituminous Materials-Prime Coat
 - ⑥ Proposed Aggregate-Prime Coat
 - ⑦ Proposed Leveling Binder, Machine Method
 - ⑧ Proposed Bituminous Concrete, Surface Course, Mixture B, Class II, 1 1/2"
 - ⑨ Existing Concrete Curb to be Removed and Re-erected
 - ⑩ Existing Steel Plate Beam Guardrail, Type A, to Remain in Place
 - ⑪ Existing Class I Bike Trail to Remain as is.
 - ⑫ Proposed Earth Excavation
 - ⑬ Proposed Bituminous Shoulder Overlay
 - ⑭ Existing Bituminous Shoulder
 - ⑮ Existing Steel Plate Beam Guardrail, Type A, to be Removed and Re-erected



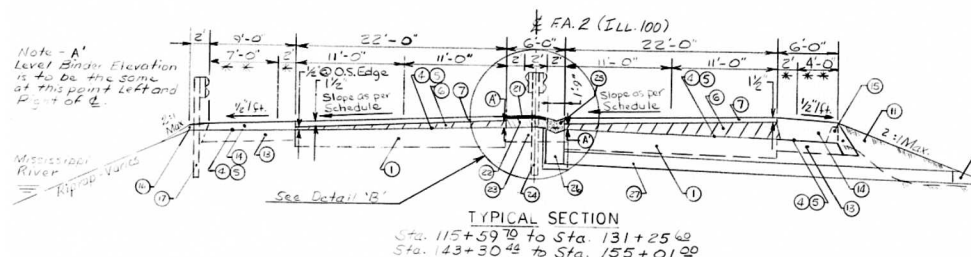
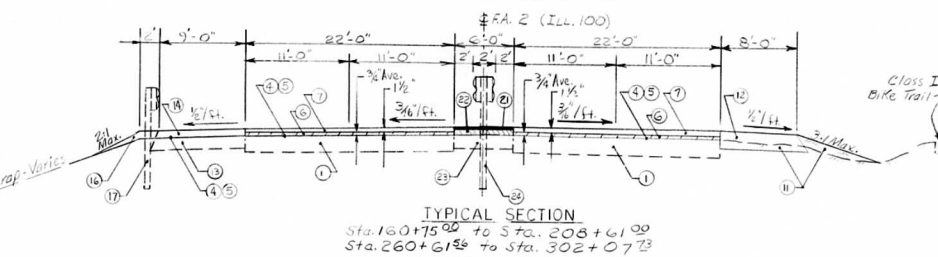
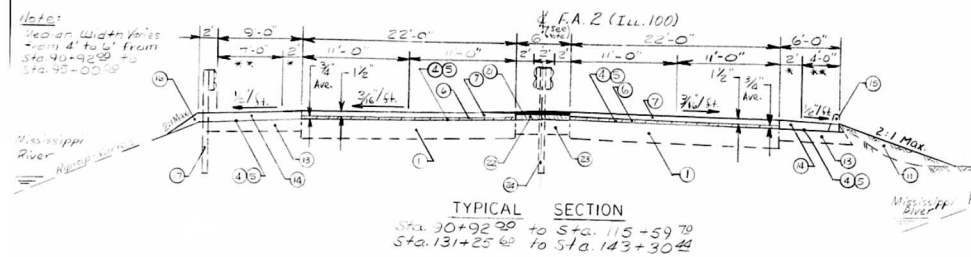
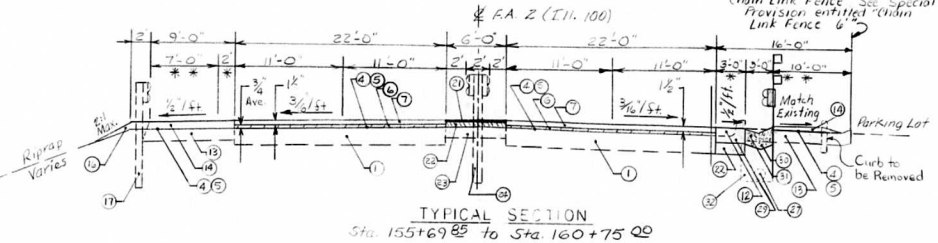
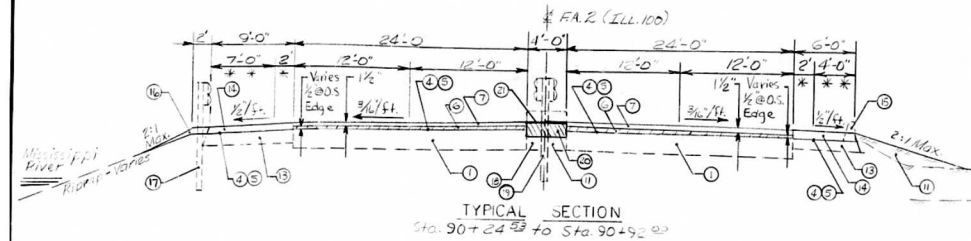
TYPICAL SECTIONS
 STA 17+99⁰⁰ TO STA 90+24⁵³

* Striped Buffer Zone
 ** Class II Bicycle Trail

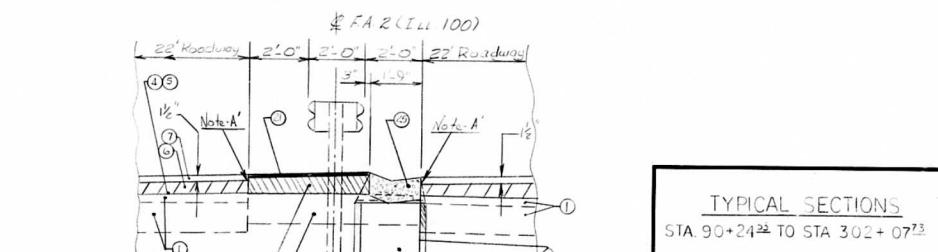
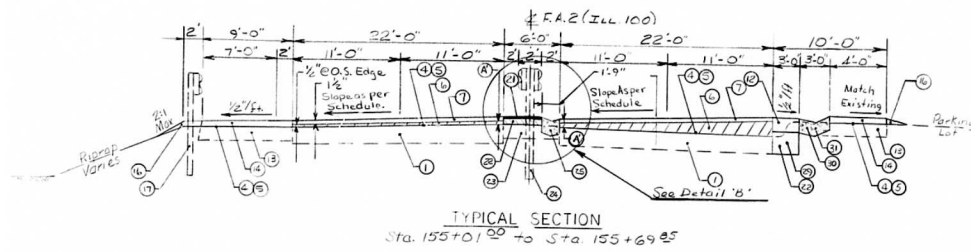
★ Section - (403, 404) RS-1F (405) RS

SECTION NO.	SECTION	COUNTY	TOTAL SHEETS	SHEET NO.
FA-2	★	Madison	70	5

Chain Link Fence See Special Provision entitled Chain Link Fence 6'



- LEGEND
- Existing Pavement
 - Existing Concrete Median to be Cold-Welded Flush
 - Existing Concrete Curb to Remain in Place
 - Proposed Bituminous Materials - Prime Coat
 - Proposed Aggregate - Prime Coat
 - Proposed Layering Binder, Machine Method
 - Proposed Bituminous Concrete Surface Course, Mixture D, Class II, 1 1/2"
 - Existing Concrete Gutter, Type A, to Remain in Place
 - Existing Steel Plate Beam Guardrail, Special No. to Remain in Place
 - Existing Class II Bicycle Trail to Remain as is
 - Proposed Earth Excavation
 - Proposed Bituminous Shoulders, 6"
 - Existing Bituminous Shoulder
 - Proposed Bituminous Shoulder Overlay
 - Existing Bituminous Curb to be Removed by Others
 - Proposed Aggregate Shoulder, Type A
 - Existing Steel Plate Beam Guardrail, Type A, to be Removed and Re-erected.
 - Existing Concrete Median to be Removed
 - Proposed New Steel Plate Beam Guardrail, Type D
 - Proposed Aggregate Base Course, Type A, 6"
 - Proposed A-3 Surface Treatment
 - Proposed Aggregate Base Course, Type A, (Variable Depth)
 - Existing Aggregate Base Course and A Surface Treatment
 - Existing Steel Plate Beam Guardrail, Type D, to be Removed and Re-erected
 - Proposed Concrete Gutter, Type B
 - Proposed Inlet, Type A, with Type 10 Frame and Grate
 - Proposed Storm Inlet, Type 10, MS-9, 12"
 - Proposed Precast Reinforced Concrete, Flared End Section, 16"
 - Proposed Concrete Gutter, Type A
 - Proposed Bituminous Finish - Removal
 - Proposed Inlet, Type B, with Type 9 Frame and Grate



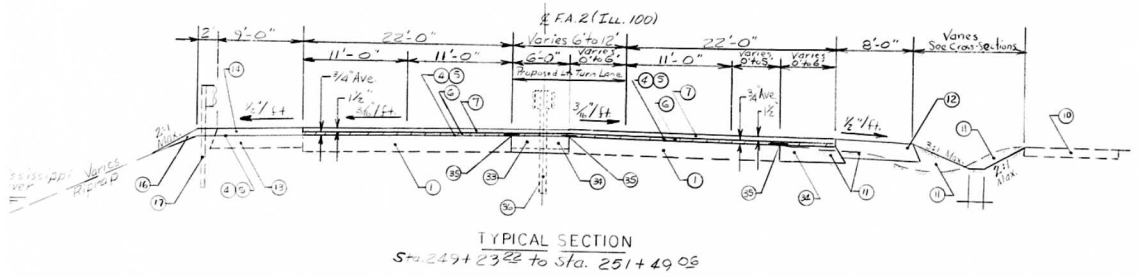
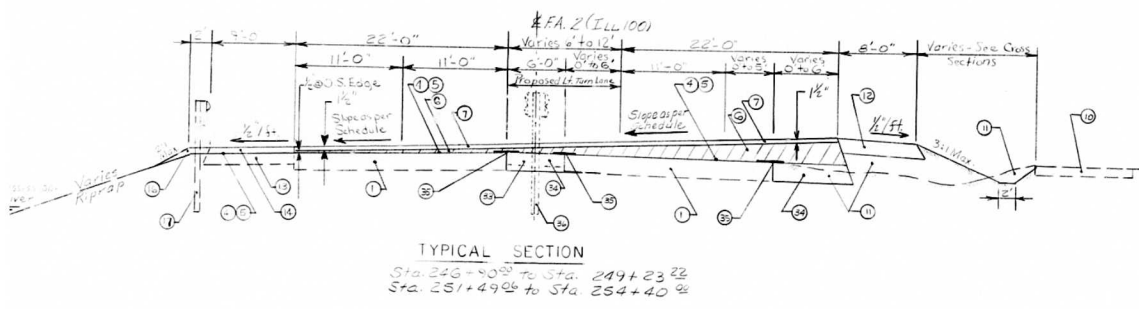
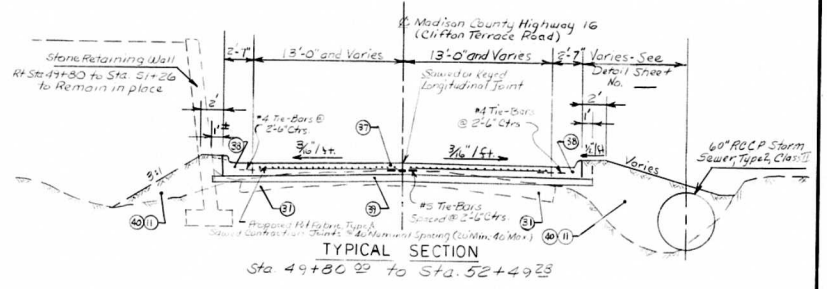
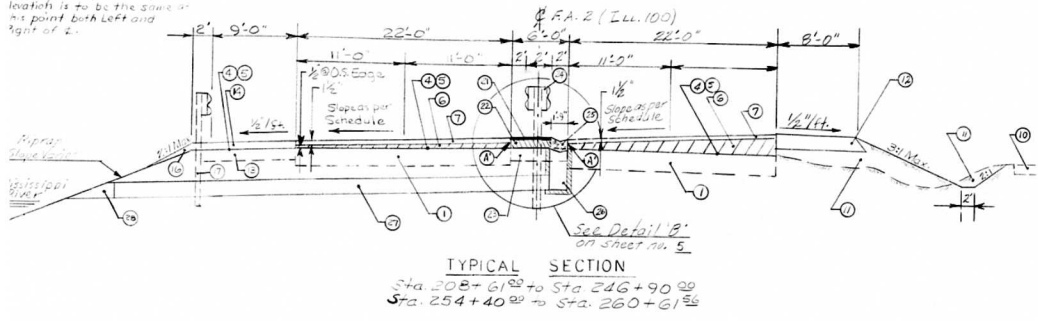
TYPICAL SECTIONS
 STA. 90+24.22 TO STA. 302+07.23

Note A

Leveling Binder, Machine Method
 levelfh is to be the same at
 this point both Left and
 Right of C.

★ Section (409,402)RS-(409)RS

SHEET NO.	SECTION	COUNTY	TOTAL SHEETS	SHEET NO.
FA. 2	★	Madison	70	6



TYPICAL SECTION
 Sta. 49+80.00 to Sta. 52+49.25

LEGEND

1. Existing Pavement
2. Existing Concrete Median to be Cold-Milled Flush
3. Existing Concrete Curb to Remain in Place
4. Proposed Bituminous Materials - Prime Coat
5. Proposed Aggregate - Prime Coat
6. Proposed Leveling Binder-Machine Method
7. Proposed Bituminous Concrete Surface Course, Mixture D, Class II, 1 1/2"
8. Existing Concrete Gutter, Type A to Remain in Place
9. Existing Steel Plate Beam Guardrail, Special, to Remain in Place
10. Existing Glass I. Bike Trail to Remain as is.
11. Proposed Earth Excavation
12. Proposed Bituminous Shoulder, 6"
13. Existing Bituminous Shoulder
14. Proposed Bituminous Shoulder Overlay
15. Existing Bituminous Subgrade to be Removed by Others
16. Proposed Aggregate Shoulder, Type A
17. Existing Steel Plate Beam Guardrail, Type A, to be Removed and Re-erected.
18. Existing Concrete Median to be Removed
19. Proposed New Steel Plate Beam Guardrail, Type D
20. Proposed Aggregate Base Course, Type A, 6"
21. Proposed A-3 Surface Treatment
22. Proposed Aggregate Base Course, Type A, Variable Depth
23. Existing Aggregate Base Course and A-Treated Surface to be Scarified
24. Existing Steel Plate Beam Guardrail, Type D, to be Removed and Re-erected
25. Proposed Concrete Gutter, Type B
26. Proposed Inlet, Type A, with Type 10 Frame and Grate
27. Proposed Storm Sewer, Type 17 R.C.P., 12"
28. Proposed Mass R.C.P. Reinforced Concrete Flared End Section, 12" with toe wall.
29. Existing Concrete Curb and Gutter to be Removed
30. Proposed Concrete Gutter, Type A
31. Proposed Bituminous Pavement Removal
32. Proposed Inlet, Type B, with Type 9 Frame and Grate
33. Proposed Median Removal
34. Proposed Bituminous Concrete Base Course Widening, 10"
35. Proposed Spring Retentive Crack Control
36. Existing Steel Plate Beam Guardrail, Type D, to be Removed and Replaced with Reinforced R.C.P. Barrier, 5'
37. Proposed Standard Reinforced R.C.P. Barrier, 5'
38. Proposed Longitudinal Concrete Curb and Gutter, Type B & C, 24"
39. Proposed Sub-base Granular Material, Type A, 6"
40. Proposed Burrow Excavation

TYPICAL SECTIONS
 STA. 208+61.92 TO STA. 254+40.00
 (ILL. ROUTE 100)
 AND
 STA. 49+80.00 TO STA. 52+49.25