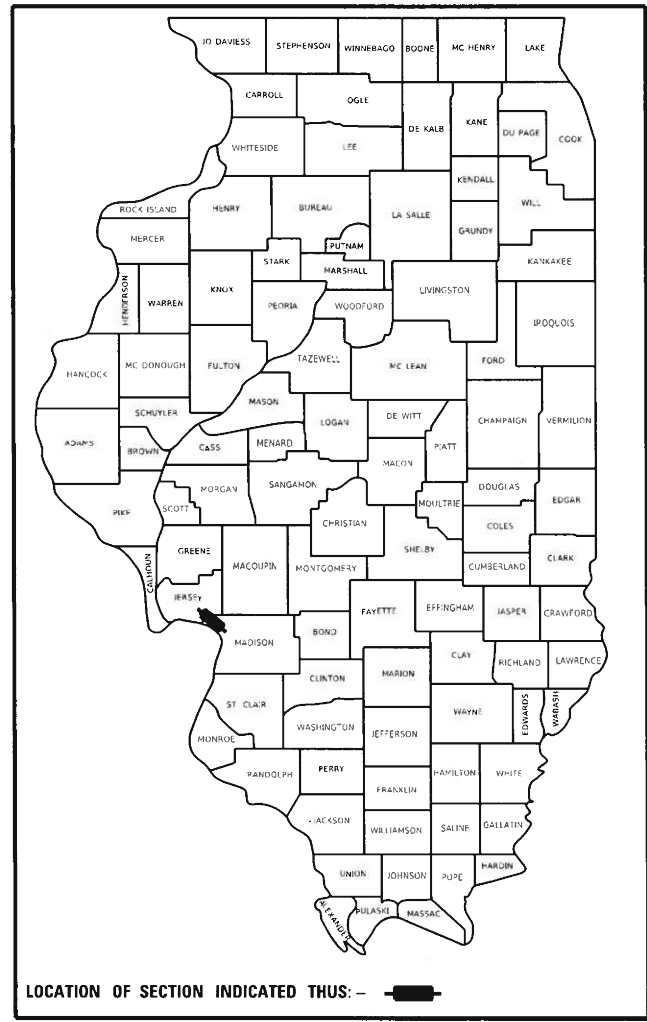


STATE OF ILLINOIS
DEPARTMENT OF TRANSPORTATION

F.A.P. RTE.	SECTION	COUNTY	TOTAL SHEETS	SHEET NO.
304	(402,403,404,405)GR	ILLINOIS	14	1
CONTRACT NO. 76N57				

D-98-091-20



LOCATION OF SECTION INDICATED THUS: - [Black Box] -

PROPOSED HIGHWAY PLANS

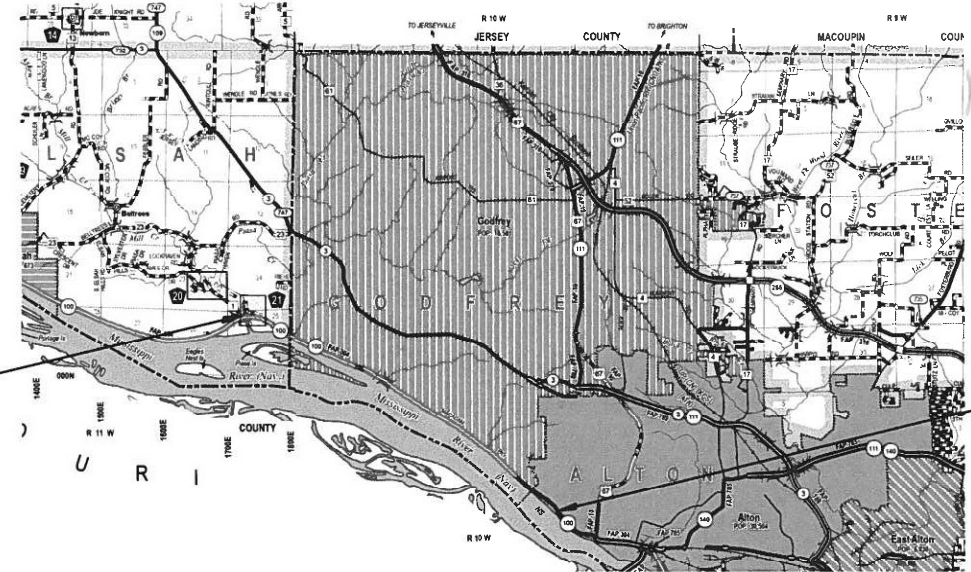
FAP ROUTE 304 (IL 100)
SECTION (402,403,404,405)GR
PROJECT HSIP-K544(194)
GUARDRAIL REPLACEMENT
MADISON & JERSEY COUNTIES

C-98-107-20

FOR INDEX OF SHEETS, SEE SHEET NO.

HIGHWAY CLASSIFICATION

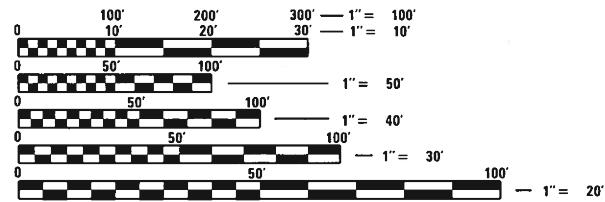
FAP 304 - IL 100
Functional Class: Other Arterial
ADT: 5300 (2019) 5400 (2020)
MU: 1.5% SU: 3.6%
Posted Speed: 55 mph



END PROJECT
M.P. 5.87
LAT: 38.93882
LONG: -90.29000

BEGIN PROJECT
M.P. 0.00
LAT: 38.88600
LONG: -90.19778

LOCATION MAP
(NOT TO SCALE)



FULL SIZE PLANS HAVE BEEN PREPARED USING STANDARD ENGINEERING SCALES. REDUCED SIZED PLANS WILL NOT CONFORM TO STANDARD SCALES. IN MAKING MEASUREMENTS ON REDUCED PLANS, THE ABOVE SCALES MAY BE USED.

J.U.L.I.E.
JOINT UTILITY LOCATION INFORMATION FOR EXCAVATORS
1-800-892-0123
OR 811

PROJECT ENGINEER HERVE GELIN (618) 346-3179
PROJECT MANAGER HERVE GELIN (618) 346-3179

GROSS LENGTH = 30,994 FT. = 5.87 MILE
NET LENGTH = 30,994 FT. = 5.87 MILE

CONTRACT NO. 76N57

STATE OF ILLINOIS
DEPARTMENT OF TRANSPORTATION

SUBMITTED March 19, 2020
Keith Roberts
REGIONAL ENGINEER

May 8, 2020 [Signature]
ENGINEER OF DESIGN AND ENVIRONMENT

May 8, 2020 [Signature]
DIRECTOR OF HIGHWAYS PROJECT IMPLEMENTATION 13

PRINTED BY THE AUTHORITY
OF THE STATE OF ILLINOIS

INDEX OF SHEETS

- 1. COVER SHEET
- 2. INDEX OF SHEETS, HIGHWAY STANDARDS, GENERAL NOTES, AND COMMITMENTS
- 3.,4. SUMMARY OF QUANTITIES
- 5.-8. TYPICALS
- 9.,10. SCHEDULES
- 11. GUARDRAIL AND GUTTER DETAILS
- 12. BEGIN AND END PROJECT LOCATIONS
- 13.,14. NEW SPBGR DETAILS

HIGHWAY STANDARDS

- 000001-07 STANDARD SYMBOLS AND ABBREVIATIONS & PATTERNS
- 606101-05 TYPE A GUTTER-INLET,OUTLET & ENT
- 630001-12 STEEL PLATE BEAM GUARDRAIL
- 630116 BACKSIDE PROTECTION OF GUARDRAIL
- 631011-10 TRAF BARRIER TERM TYPE 2
- 631031-16 TRAF BARRIER TERM TYPE 6
- 630301-09 SHOULDER WIDENING FOR TYPE 1 (SPECIAL) GUARDRAIL TERMINALS
- 701011-04 OFF-ROAD OPERATIONS MULTILANE 15' TO 24" FROM EOP
- 701421-08 LANE CLOSURE, MULTI-LANE, FOR SPEEDS ≥ 45 TO 55 MPH, DAY ONLY
- 701901-08 TRAFFIC CONTROL DEVICES

GENERAL NOTES

- 1. NO OVERNIGHT LANE CLOSURES WILL BE ALLOWED.
- 2. NO MATERIAL SHALL BE LEFT ON OR NEAR THE ROADWAY DURING NON-WORKING HOURS.
- 3. ANY NECESSARY TRAFFIC CONTROL WILL BE PROVIDED BY THE CONTRACTOR; APPROPRIATE STANDARDS ARE LISTED IN THE PLANS AND CONTRACT DOCUMENTS.
- 4. PRIOR TO ORDERING ANY MATERIALS, THE CONTRACTOR SHALL CONFIRM THE TYPES AND SPECIFIC MANUFACTURER FOR THE GUARDRAIL.
- 5. UTILITIES KNOWN TO HAVE FACILITIES WITHIN THE PROJECT AREA ARE AS FOLLOWS:

 - AMEREN ILLINOIS
 - CHARTER COMMUNICATIONS
 - CITY OF ALTON WATER & SANITARY SEWER
 - CITY OF ALTON LIGHTING
 - AT&T ILLINOIS
 - VILLAGE OF GODFREY
 - ILLINOIS AMERICAN WATER COMPANY
- 6. WHEN NO WORK IS BEING PERFORMED, THE FLAGGERS WILL NOT BE REQUIRED. IF THE FLAGGERS ARE NOT PRESENT, THE FLAGGER SIGNS SHALL BE REMOVED OR COVERED.
- 7. THE DEPARTMENT STRONGLY ENCOURAGES THE PRIME CONTRACTOR AND THEIR SUB-CONTRACTORS TO HIRE MINORITY, WOMEN AND DISADVANTAGED INDIVIDUALS FROM ITS FEDERALLY FUNDED HIGHWAY CONSTRUCTION CAREERS TRAINING PROGRAM (HCCTP) TO HELP MEET WORKFORCE AND TRAINEE GOALS. THIS PROGRAM IS TRAINING MINORITIES, WOMEN AND DISADVANTAGED INDIVIDUALS IN HIGHWAY CONSTRUCTION-RELATED SKILLS, E.G., MATH FOR THE TRADES, JOB READINESS, TECHNICAL SKILLS COURSEWORK (CARPENTRY, CONCRETE FLATWORK, BLUEPRINT READING, SITE PLANS, SITE WORK, TOOLS USE, ETC.) AND OSHA 10 HOUR CERTIFICATION, TO PREPARE THEM FOR A CAREER IN THE HIGHWAY CONSTRUCTION TRADES. GRADUATES ARE WELL-TRAINED AND READY TO BECOME PRODUCTIVE ENTRY-LEVEL CONSTRUCTION WORKERS. CONTACT THE DISTRICT EEO OFFICE AT 618-346-3360 AND OR THE HCCTP COORDINATOR AT 618-874-6528 TO LEARN MORE ABOUT THE PROGRAM AND FOR ASSISTANCE IN MEETING WORKFORCE AND TRAINEE GOALS.
- 8. REMOVED GUARDRAIL THAT IS NOT REPLACED ON THE SAME DAY MUST BE DELINEATED WITH LIGHTED BARICADES. NO LOCATIONS WILL BE LEFT WITHOUT EITHER LIGHTED BARICADES OR RESTORED GUARDRAIL AT ANY TIME.
- 9. ALL DISTURBED EMBANKMENT AREAS SHALL BE SEEDED WITH CLASS 2A SEED, FERTILIZED AND MULCHED AS PER SECTION 250.04 OF THE STANDARD SPECIFICATIONS AND AS DIRECTED BY THE ENGINEER. THE COST FOR PERFORMING THIS WORK SHALL BE CONSIDERED INCLUDED IN THE UNIT PRICE BID FOR THE ITEM OF WORK INITIATING THE DISTURBANCE.
- 10. THE CONTRACTOR AND THE ENGINEER SHALL BE AWARE THAT NO SURVEY WAS PERFORMED FOR THIS PROJECT. THE MILE STATIONING AND QUANTITIES SHOWN IN THE PLANS WERE CREATED USING MICROFILM AND FIELD MEASUREMENTS. ALL SHALL BE ASSUMED APPROXIMATE. THE CONTRACTOR SHALL VERIFY ALL DIMENSIONS AND CONDITIONS IN THE FIELD PRIOR TO CONSTRUCTION AND ORDERING MATERIALS.

COMMITMENTS

NONE

PERTINENT INFORMATION

TWO WEEKS PRIOR TO THE START OF THE PROJECT THE RESIDENT ENGINEER/TECHNICIAN SHALL CONTACT THESE ENTITIES TO NOTIFY THEM OF WORK ON AND NEAR THE BIKE TRAIL AT MILE POINT 2.06 TO MILE POINT 2.16.

- GREAT RIVERS GREENWAY DISTRICT: 314-436-7009
- MADISON COUNTY TRANSIT TRAILS: 618-797-4600
- TRAILNET: 314-436-1324
- RIDE ILLINOIS: 630-216-9282
- METRO EAST PARKS AND RECREATIONAL DISTRICT: 618-346-4905

REV. - MS

MODEL: D:\default
 FILE: M:\MILE_76N57\Project\DOT\Documents\DOT_Offices\District_B\Project\DOT\76N57\CADD\DATA\CAD\Sheet\DOT\76N57-shc-plan.dgn

USER NAME = dintelmanjn	DESIGNED -	REVISED -
	DRAWN -	REVISED -
PLOT SCALE = 100.0000' / in.	CHECKED -	REVISED -
PLOT DATE = 3/20/2020	DATE -	REVISED -

**STATE OF ILLINOIS
DEPARTMENT OF TRANSPORTATION**

**INDEX OF SHEETS, HIGHWAY STANDARDS
& GENERAL NOTES,**

SCALE: SHEET OF SHEETS STA. TO STA.

F.A.P. RTE.	SECTION	COUNTY	TOTAL SHEETS	SHEET NO.
304	(402,403,404,405)GR	*	14	2
ILLINOIS FED. AID PROJECT			CONTRACT NO. 76N57	

80% FED / 20% STATE
CONSTRUCTION CODE

CODE NO.	ITEM	UNIT	TOTAL QUANTITY	CONSTRUCTION CODE	
				MADISON CO.	JERSEY CO.
				SAFETY 0021 URBAN	SAFETY 0021 URBAN
20400800	FURNISHED EXCAVATION	CU YD	170	68	102
35101400	AGGREGATE BASE COURSE, TYPE B	TON	6	6	
40800050	INCIDENTAL HOT-MIX ASPHALT SURFACING	TON	11	11	
44000100	PAVEMENT REMOVAL	SQ YD	90	90	
44000400	GUTTER REMOVAL	FOOT	542	542	
60602500	CONCRETE GUTTER, TYPE A	FOOT	542	542	
63000001	STEEL PLATE BEAM GUARDRAIL, TYPE A, 6 FOOT POSTS	FOOT	2650	2600	50
63000003	STEEL PLATE BEAM GUARDRAIL, TYPE A, 9 FOOT POSTS	FOOT	26150	22375	3775
63000017	STEEL PLATE BEAM GUARDRAIL, TYPE D, 6 FOOT POSTS	FOOT	21821	20233.5	1587.5
63000035	BACK SIDE PROTECTION OF GUARDRAIL	FOOT	2537.5	2487.5	50
63100045	TRAFFIC BARRIER TERMINAL, TYPE 2	EACH	8	7	1
63100085	TRAFFIC BARRIER TERMINAL, TYPE 6	EACH	5		5
63100167	TRAFFIC BARRIER TERMINAL, TYPE 1 (SPECIAL) TANGENT	EACH	21	16	5
63200310	GUARDRAIL REMOVAL	FOOT	51628.5	50244	1384.5

MODEL: Default
 FILE: MainE_Plan.dwg
 PROJECT: I:\Projects\76N57\CADD\Drawings\DOT\Office\District 8\Projects\76N57\CADD\Drawings\76N57-shc-plan.dwg

REV. - MS

USER NAME = dintelmanjn	DESIGNED -	REVISED -
	DRAWN -	REVISED -
PLOT SCALE = 100.0000' / in.	CHECKED -	REVISED -
PLOT DATE = 3/20/2020	DATE -	REVISED -

**STATE OF ILLINOIS
DEPARTMENT OF TRANSPORTATION**

SUMMARY OF QUANTITIES

SCALE: SHEET OF SHEETS STA. TO STA.

F.A.P. RTE.	SECTION	COUNTY	TOTAL SHEETS	SHEET NO.
304	(402,403,404,405)GR	*	14	3
				CONTRACT NO. 76N57
		ILLINOIS	FED. AID PROJECT	MADISON & JERSEY

80% FED / 20% STATE
CONSTRUCTION CODE

CODE NO.	ITEM	UNIT	TOTAL QUANTITY	CONSTRUCTION CODE	
				MADISON CO.	JERSEY CO.
				SAFETY 0021 URBAN	SAFETY 0021 URBAN
64300450	IMPACT ATTENUATORS (NON-REDIRECTIVE), TEST LEVEL 3	EACH	8	7	1
67000400	ENGINEER'S FIELD OFFICE, TYPE A	CAL MO	1	0.8	0.2
67100100	MOBILIZATION	L SUM	1	0.8	0.2
70100310	TRAFFIC CONTROL AND PROTECTION, STANDARD 701421	L SUM	1	0.8	0.2
72501000	TERMINAL MARKER - DIRECT APPLIED	EACH	21	16	5
78200005	GUARDRAIL REFLECTORS, TYPE A	EACH	248	232	16
* 80300100	LOCATING UNDERGROUND CABLE	FOOT	50	50	
Ø Z0076600	TRAINEES	HOUR	1500	1500	
X7010100	TRAFFIC CONTROL AND PROTECTION, STANDARD 701421	EACH	2	1	1
Ø Z0076604	TRAINEES TRAINING PROGRAM GRADUATE	HOUR	1500	1500	
X9700021	MOBILE BARRIER TRAILER	L SUM	1	0.8	0.2

* SPECIALTY ITEM

Ø 0042

MODEL: \$MODELNAME\$ FILE NAME: tw:\urban\com.dot\illinois.gov\PIWDOT\Documents\DOT_Offices\District_8\Projects\DB_FNS7\CAD\Drawn\CAD\Sheets\DB_FNS7-shr-plan.dgn

USER NAME = dintelmanjn	DESIGNED -	REVISED -
	DRAWN -	REVISED -
PLOT SCALE = 100.0000 ' / in.	CHECKED -	REVISED -
PLOT DATE = 3/20/2020	DATE -	REVISED -

STATE OF ILLINOIS
DEPARTMENT OF TRANSPORTATION

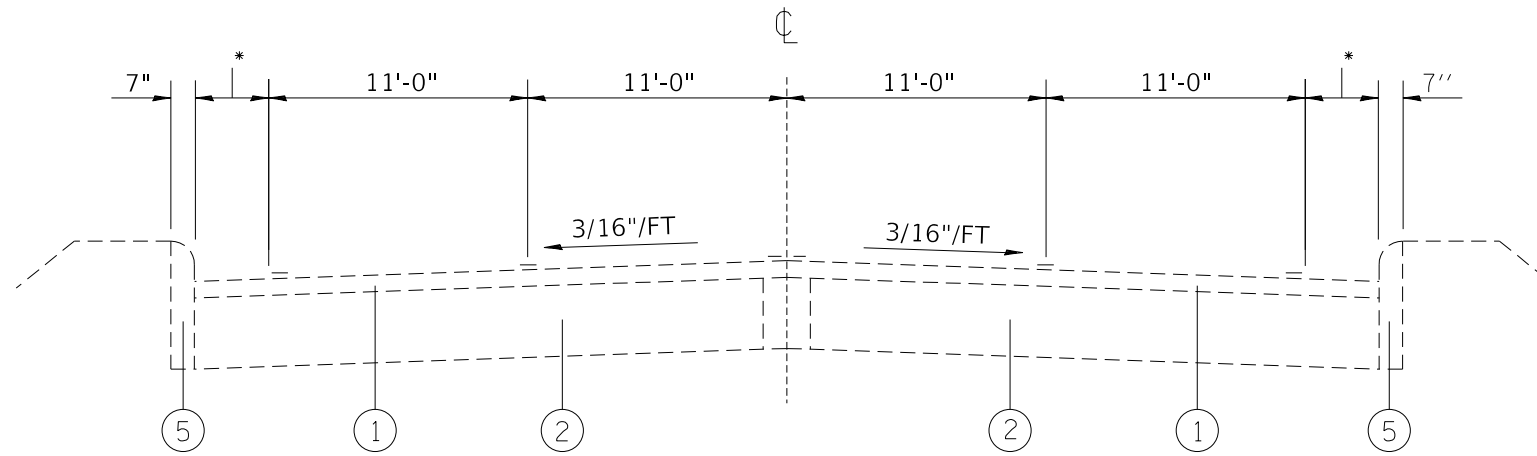
SUMMARY OF QUANTITIES

SCALE: SHEET OF SHEETS STA. TO STA.

F.A.P. RTE.	SECTION	COUNTY	TOTAL SHEETS	SHEET NO.
304	(402,403,404,405)GR	*	14	4
CONTRACT NO. 76N57			ILLINOIS FED. AID PROJECT	

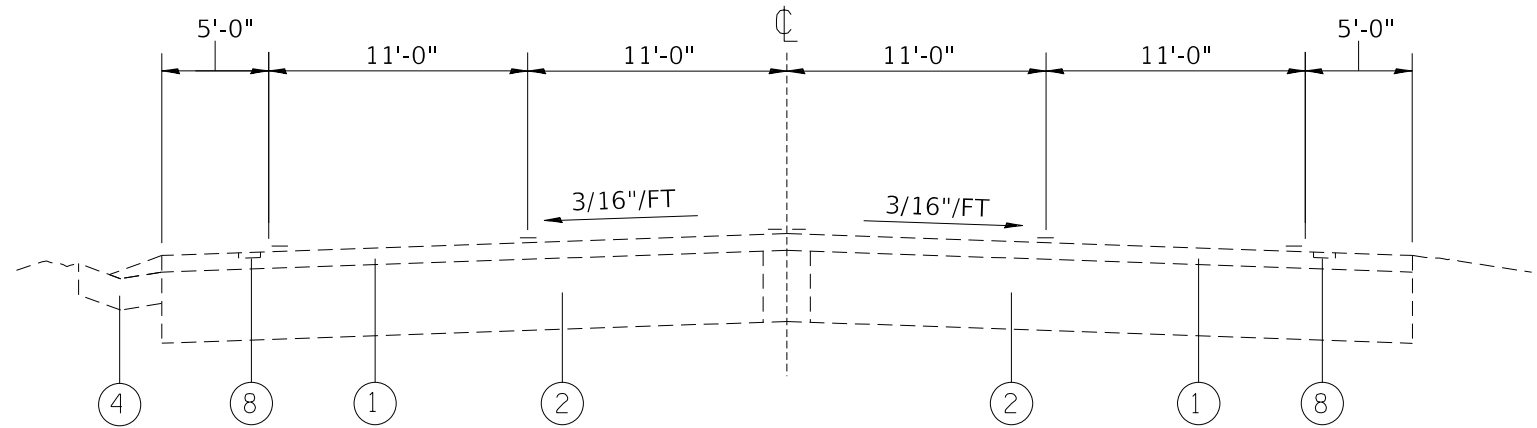
REV. - MS

MADISON & JERSEY

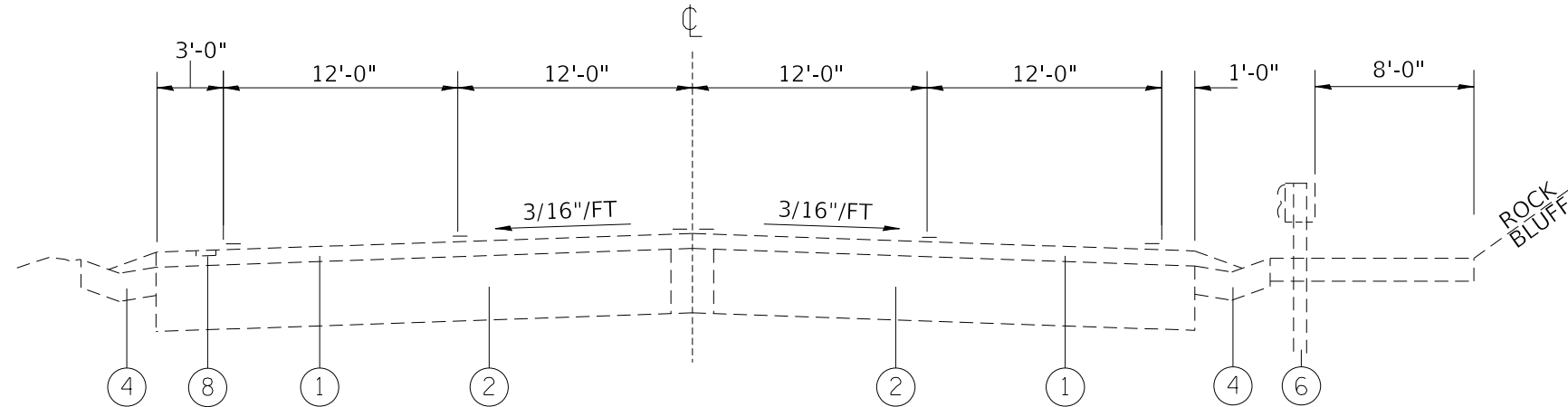


TYPICAL SECTION
M.S. 0.0 TO M.S. 0.529

* VARIES 4'-0" FROM M.S. 0.0 TO M.S. 0.37
TO 5'-0" FROM M.S. 0.37 TO M.S. 0.52



TYPICAL SECTION
M.S. 0.529 TO M.S. 0.685



TYPICAL SECTION
M.S. 0.685 TO M.S. 0.801

LEGEND

- ① EXISTING HOT-MIX ASPHALT SURFACE COURSE
- ② EXISTING BITUMINOUS PAVEMENT
- ③ EXISTING HOT-MIX ASPHALT SHOULDER
- ④ EXISTING CONCRETE GUTTER, TYPE B
- ⑤ EXISTING COMBINATION CONCRETE CURB
- ⑥ EXISTING GUARDRAIL
- ⑦ EXISTING STEEL PLATE BEAM GUARDRAIL, TYPE D
- ⑧ EXISTING RUMBLE STRIP, 8"
- ⑨ EXISTING CONCRETE MEDIAN

MODEL: Default
 FILE: \\nrcs-pix\pub\harcourt\mtda\illinois.gov\PHWDOT\Documents\DOT_Offices\District 8\Projects\076N57\CADD\DATA\CAD\Sheet\076N57-shc-plan.dgn

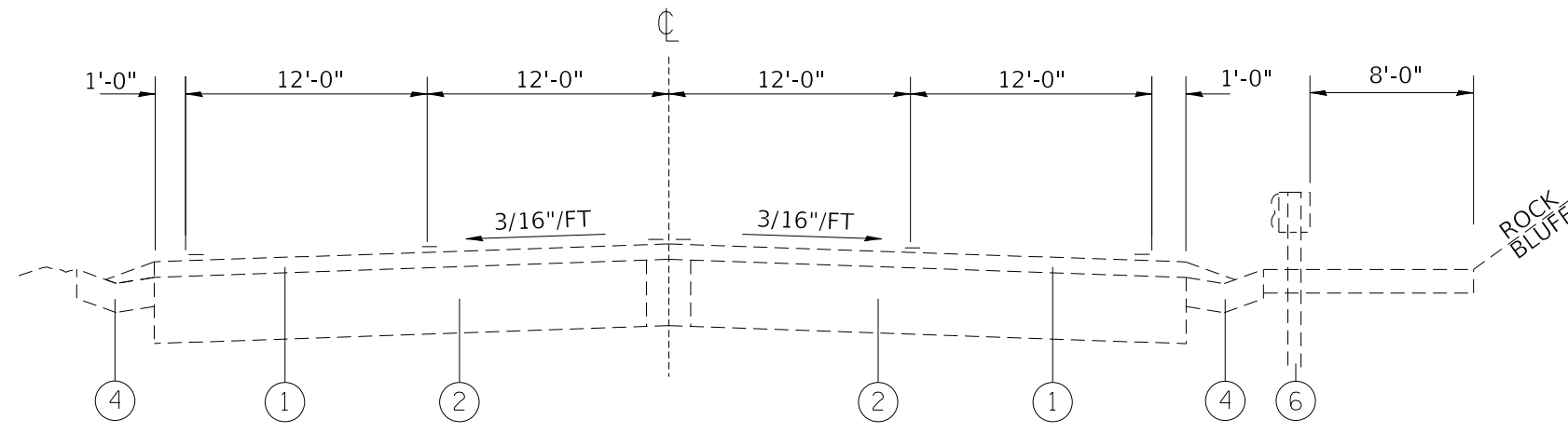
USER NAME = dintelmanjn	DESIGNED -	REVISED -
	DRAWN -	REVISED -
PLOT SCALE = 100.0000' / in.	CHECKED -	REVISED -
PLOT DATE = 3/20/2020	DATE -	REVISED -

**STATE OF ILLINOIS
DEPARTMENT OF TRANSPORTATION**

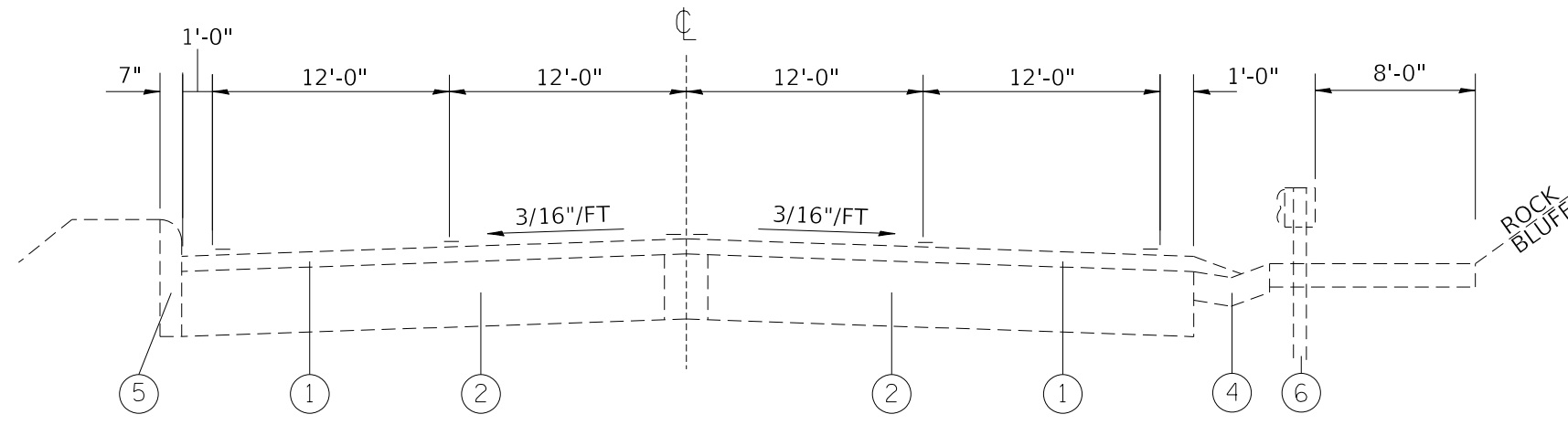
EXISTING TYPICAL SECTIONS

SCALE: SHEET 1 OF 4 SHEETS STA. TO STA.

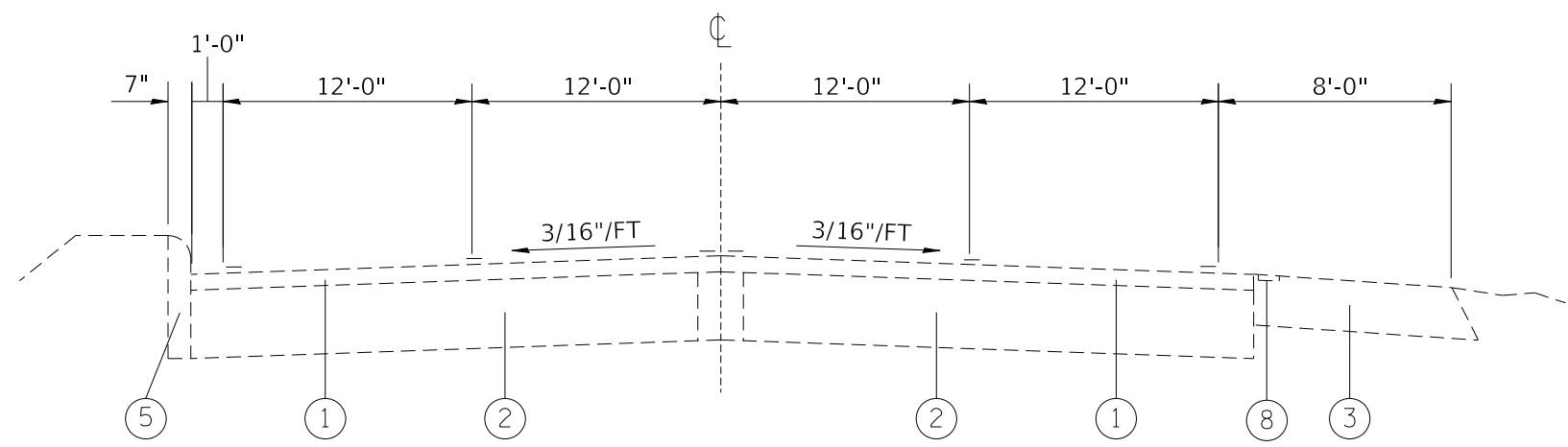
F.A.P. RTE.	SECTION	COUNTY	TOTAL SHEETS	SHEET NO.
304	(402,403,404,405)GR	MADISON	14	5
			CONTRACT NO. 76N57	
		ILLINOIS	FED. AID PROJECT	



TYPICAL SECTION
M.S. 0.801 TO M.S. 0.910



TYPICAL SECTION
M.S. 0.910 TO M.S. 1.062



TYPICAL SECTION
M.S. 1.062 TO M.S. 1.26

LEGEND

- ① EXISTING HOT-MIX ASPHALT SURFACE COURSE
- ② EXISTING BITUMINOUS PAVEMENT
- ③ EXISTING HOT-MIX ASPHALT SHOULDER
- ④ EXISTING CONCRETE GUTTER, TYPE B
- ⑤ EXISTING COMBINATION CONCRETE CURB
- ⑥ EXISTING GUARDRAIL
- ⑦ EXISTING STEEL PLATE BEAM GUARDRAIL, TYPE D
- ⑧ EXISTING RUMBLE STRIP, 8"
- ⑨ EXISTING CONCRETE MEDIAN

MODEL: Default
 FILE: \\nrcs-pc\pub\harcourt\m.d\illinois.gov\PROJECTS\DOT Documents\DOT Office\Drawings\Projects\076N57\CADD\DATA\CAD\Sheet\076N57-shc-plan.dgn

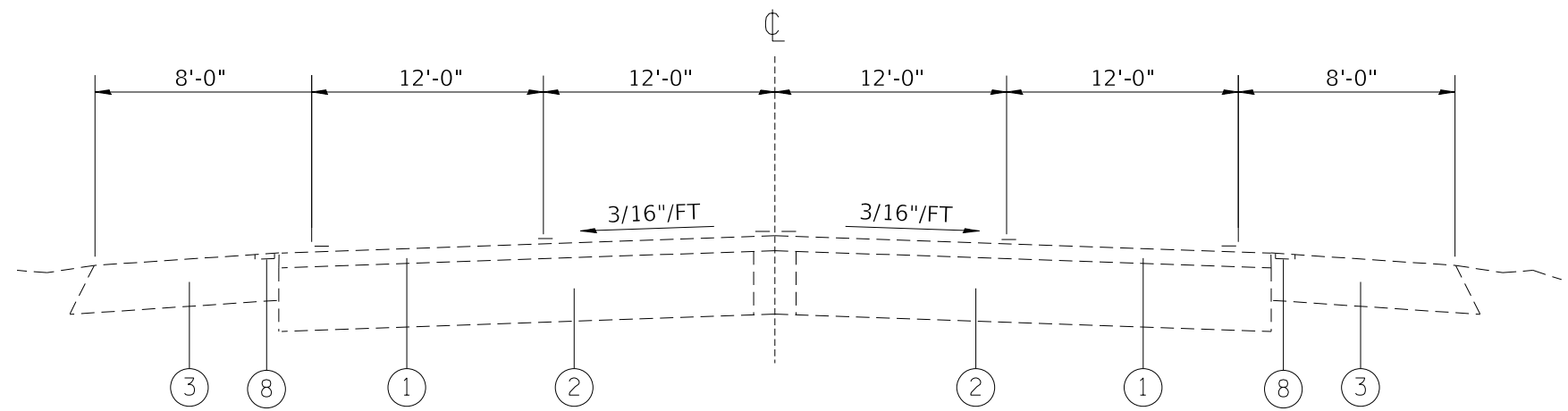
USER NAME = dintelmanjn	DESIGNED -	REVISED -
	DRAWN -	REVISED -
PLOT SCALE = 100.0000' / in.	CHECKED -	REVISED -
PLOT DATE = 3/20/2020	DATE -	REVISED -

**STATE OF ILLINOIS
DEPARTMENT OF TRANSPORTATION**

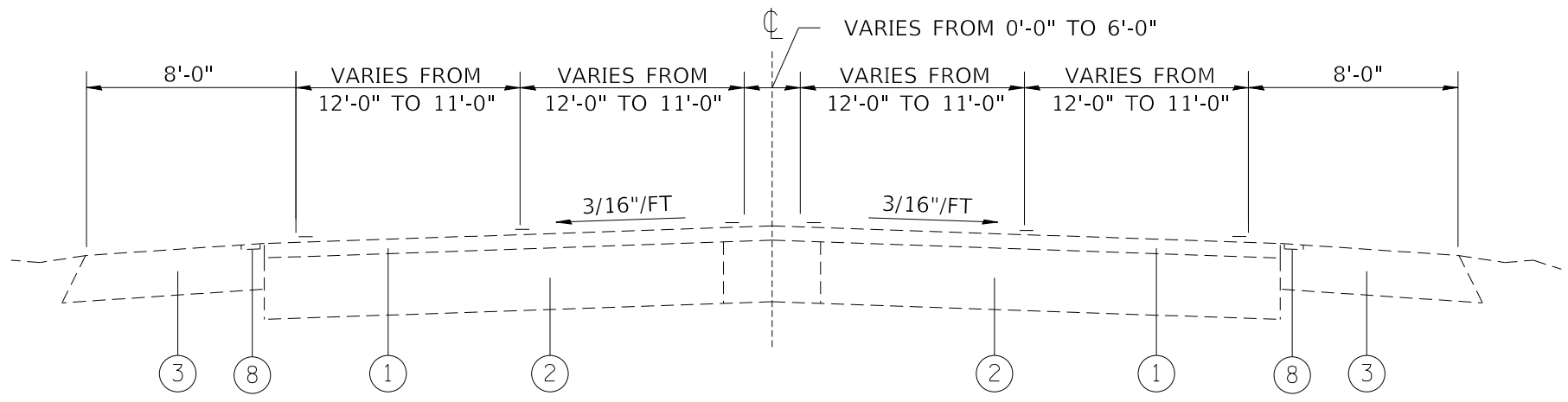
EXISTING TYPICAL SECTIONS

SCALE: SHEET 2 OF 4 SHEETS STA. TO STA.

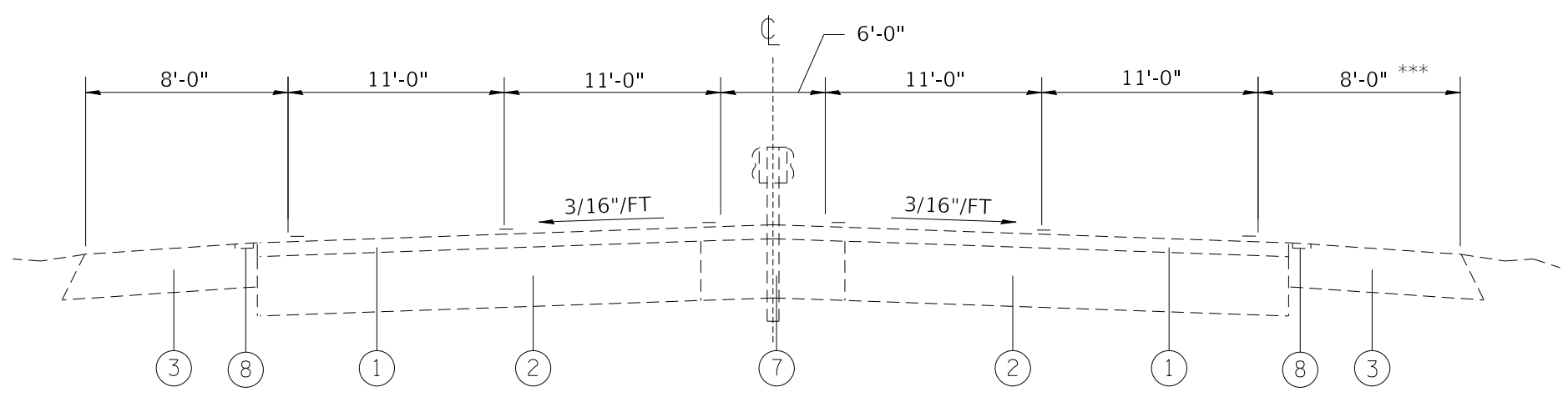
F.A.P. RTE.	SECTION	COUNTY	TOTAL SHEETS	SHEET NO.
304	(402,403,404,405)GR	MADISON	14	6
			CONTRACT NO. 76N57	
		ILLINOIS	FED. AID PROJECT	



TYPICAL SECTION
M.S. 1.260 TO M.S. 1.319



TYPICAL SECTION
M.S. 1.319 TO M.S. 1.346



TYPICAL SECTION
M.S. 1.346 TO M.S. 5.439

LEGEND

- ① EXISTING HOT-MIX ASPHALT SURFACE COURSE
- ② EXISTING BITUMINOUS PAVEMENT
- ③ EXISTING HOT-MIX ASPHALT SHOULDER
- ④ EXISTING CONCRETE GUTTER, TYPE B
- ⑤ EXISTING COMBINATION CONCRETE CURB
- ⑥ EXISTING GUARDRAIL
- ⑦ EXISTING STEEL PLATE BEAM GUARDRAIL, TYPE D
- ⑧ EXISTING RUMBLE STRIP, 8"
- ⑨ EXISTING CONCRETE MEDIAN

MODEL: Default
 FILE: Model: P:\pub\planroom.dwg
 PROJECT: I:\projects\076N57\CADD\Drawings\DOT_Offices\Drawings\076N57\CADD\Drawings\076N57-shc-plan.dgn
 PLOT DATE = 3/20/2020

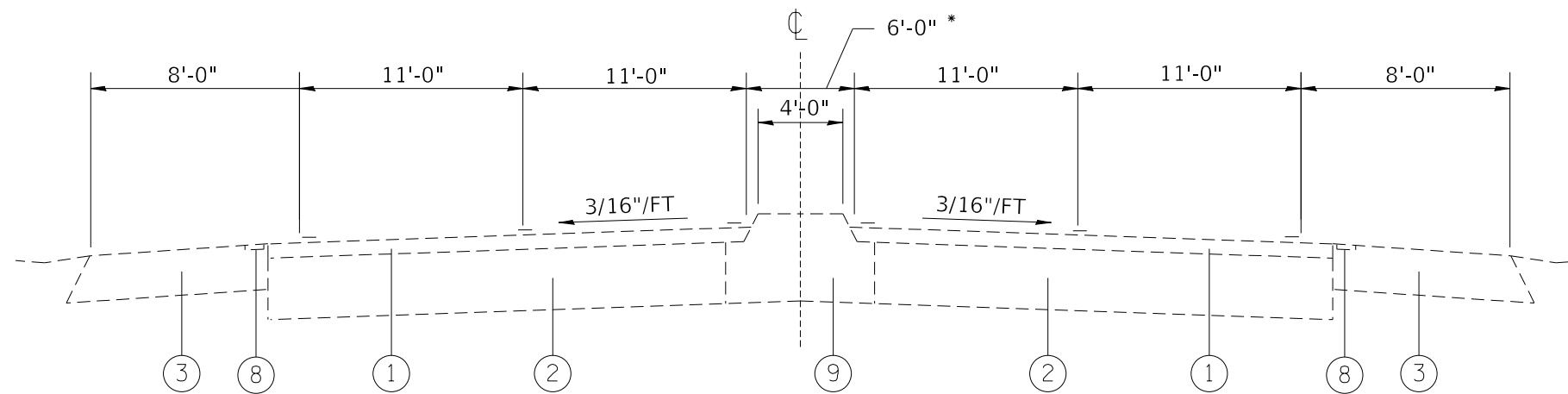
USER NAME = dintelmanjn	DESIGNED -	REVISED -
PLOT SCALE = 100.0000' / in.	DRAWN -	REVISED -
PLOT DATE = 3/20/2020	CHECKED -	REVISED -
	DATE -	REVISED -

**STATE OF ILLINOIS
DEPARTMENT OF TRANSPORTATION**

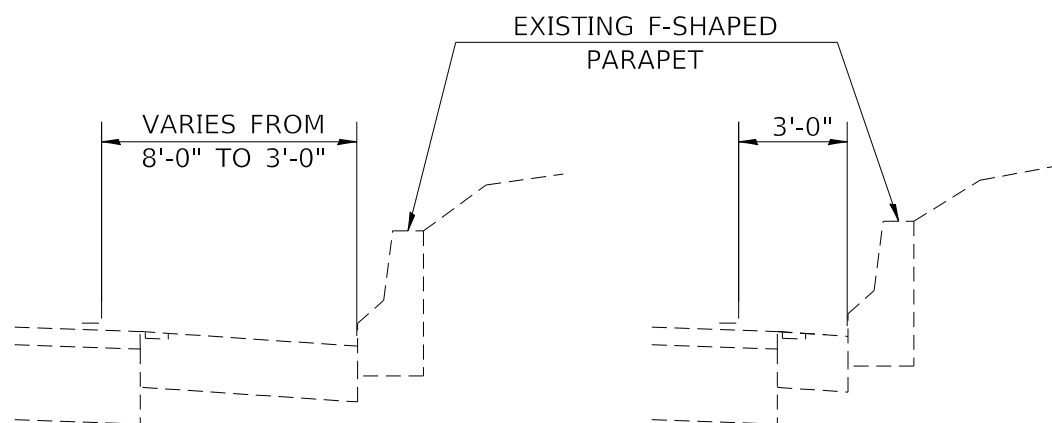
EXISTING TYPICAL SECTIONS

SCALE: SHEET 3 OF 4 SHEETS STA. TO STA.

F.A.P. RTE.	SECTION	COUNTY	TOTAL SHEETS	SHEET NO.
304	(402,403,404,405)GR	MADISON	14	7
			CONTRACT NO. 76N57	
		ILLINOIS	FED. AID PROJECT	



TYPICAL SECTION
M.S. 5.439 TO M.S. 5.560



DETAIL
M.S. 4.894 TO M.S. 4.911
M.S. 4.972 TO M.S. 4.980

DETAIL
M.S. 4.911 TO M.S. 4.972

LEGEND

- ① EXISTING HOT-MIX ASPHALT SURFACE COURSE
- ② EXISTING BITUMINOUS PAVEMENT
- ③ EXISTING HOT-MIX ASPHALT SHOULDER
- ④ EXISTING CONCRETE GUTTER, TYPE B
- ⑤ EXISTING COMBINATION CONCRETE CURB
- ⑥ EXISTING GUARDRAIL
- ⑦ EXISTING STEEL PLATE BEAM GUARDRAIL, TYPE D
- ⑧ EXISTING RUMBLE STRIP, 8"
- ⑨ EXISTING CONCRETE MEDIAN

MODEL: Default
 FILE: \\nrcs-pis\pub\lanroom\data\illinois.gov\PIWDOT\Documents\DOT_Offices\District_8\Projects\ID76N57\CADD\Drawings\ID76N57-shc-plan.dgn

USER NAME = dintelmanjn	DESIGNED -	REVISED -
PLOT SCALE = 100.0000' / in.	DRAWN -	REVISED -
PLOT DATE = 3/20/2020	CHECKED -	REVISED -
	DATE -	REVISED -

**STATE OF ILLINOIS
DEPARTMENT OF TRANSPORTATION**

EXISTING TYPICAL SECTIONS

SCALE: SHEET 4 OF 4 SHEETS STA. TO STA.

F.A.P. RTE.	SECTION	COUNTY	TOTAL SHEETS	SHEET NO.
304	(402,403,404,405)GR	MADISON	14	8
ILLINOIS			FED. AID PROJECT	

CONTRACT NO. 76N57

GUARDRAIL - IL 100 SOUTH BOUND													
County	LOCATION		LENGTH OF NEED	GUARDRAIL REMOVAL	SPBGR 6' POSTS	SPBGR 9' POSTS	TRAFFIC BARRIER TERMINAL TYPE 1, SPECIAL (TANGENT)	TRAFFIC BARRIER TERMINAL TYPE 6	TRAFFIC BARRIER TERMINAL TYPE 2	FURNISHED EXCAVATION	GUARDRAIL REFLECTORS, TYPE A	TERMINAL MARKER DIRECT APPLIED	
	MILE POINT	DESCRIPTION											FOOT
MADISON	0.00	840' S OF PIASA BIRD MON.		1750			1					1	
MADISON	0.01		1725			1650					8		
MADISON	0.32						1					1	
MADISON	0.75	3080' N OF PIASA BIRD MON.		4588			1					1	
MADISON	0.76		4563			4487.5					15		
MADISON	1.6						1					1	
MADISON	1.61	AT HISTORICAL MON.		2137.5			1					1	
MADISON	1.62		2112.5			2037.5					9		
MADISON	2.02						1					1	
MADISON	2.03	AT PARK ENTRANCE		675					1				
MADISON	2.04		650			612.5					6		
MADISON	2.16						1					1	
MADISON	2.17	AT ENTRANCE		7700					1				
MADISON	2.17		7650			7625					23		
MADISON	3.62						1					1	
MADISON	3.79	368' S OF CLIFTON TERRACE RD.		187.5					1				
MADISON	3.79		175			125					4		
MADISON	3.81						1					1	
MADISON	3.83	143' S OF CLIFTON TERRACE RD.		382					1				
MADISON	3.83		350			312.5					4		
MADISON	3.89						1					1	
MADISON	3.91	295' N OF CLIFTON TERRACE RD.		8825			1					1	
MADISON	3.91		8713			5525							
JERSEY	4.96					3225							
JERSEY	5.57								1				
JERSEY	5.82 (LT)	AT STR. 042-0024	289	312.5		225			1		17	4	
JERSEY	5.82 (RT)		50	295	50				1		17	4	
JERSEY	5.83 (RT)								1				1
JERSEY	5.87 (RT)								1				1
SUB-TOTALS				26852.5	50	25825	13	2	5	34	77	13	

GUARDRAIL - IL 100 NORTH BOUND														
County	LOCATION		LENGTH OF NEED	GUARDRAIL REMOVAL	SPBGR 6' POSTS	SPBGR 9' POSTS	BACKSIDE PROTECTION OF GUARDRAIL	TRAFFIC BARRIER TERMINAL TYPE 1, SPECIAL (TANGENT)	TRAFFIC BARRIER TERMINAL TYPE 6	TRAFFIC BARRIER TERMINAL TYPE 2	FURNISHED EXCAVATION	GUARDRAIL REFLECTORS, TYPE A	TERMINAL MARKER DIRECT APPLIED	
	MILE POINT	DESCRIPTION												FOOT
MADISON	0.17	JUST N OF PIASA BIRD MON		1900					1				1	
MADISON	0.18		1825			1800					17			
MADISON	0.53								1			9		
MADISON	1.45	3,060' S OF PARK ENT		330					1				1	
MADISON	1.45		93			62.5						4		
MADISON	1.52									1				
MADISON	2.05	20' NORTH OF PARK ENT.		638					1				1	
MADISON	2.06		615			587.5						5		
MADISON	2.17									1				
MADISON	3.36		344								17			
MADISON	3.37								1				1	
MADISON	3.36	CULVERT 330' S OF IROQUIS DR	181			150						4		
MADISON	3.43									1				
JERSEY	5.07	AT CONCRETE BARRIER		60			50						1	
JERSEY	5.08								1					
JERSEY	5.7 (RT)	AT STR. 042-0023		417					1			17	1	
JERSEY	5.7 (RT)		390			325						4		
JERSEY	5.72 (LT)			300						1			17	1
JERSEY	5.72 (LT)		114			50						4		
JERSEY	5.77 (RT)									1			17	
JERSEY	5.77 (LT)									1			17	
SUB-TOTALS				3989	2650			8	3	3	136	30	8	

NOTE: EXISTING GUARDRAIL AT M.P. 0.14 NEAR CROSSWALK TO REMAIN IN PLACE.

MODEL: Default
FILE: h:\m\c:\pic\planner\room.dta\illinois.gov\PROJECTS\DOT\Documents\DOT - Offices\Dir\ctc @projects\DOT\6857\CADD\DATA\CAD\Inches\DOT\6857-shc-plan.dgn

USER NAME = dintelmanjn	DESIGNED -	REVISED -
	DRAWN -	REVISED -
PLOT SCALE = 100.0000' / in.	CHECKED -	REVISED -
PLOT DATE = 3/20/2020	DATE -	REVISED -

**STATE OF ILLINOIS
DEPARTMENT OF TRANSPORTATION**

SCHEDULE OF QUANTITIES

SCALE: SHEET OF SHEETS STA. TO STA.

F.A.P. RTE.	SECTION	COUNTY	TOTAL SHEETS	SHEET NO.
304	(402,403,404,405)GR	*	14	9
CONTRACT NO. 76N57				
ILLINOIS FED. AID PROJECT				

GUARDRAIL - COMBINED												
Location	GUARDRAIL REMOVAL	SPBGR 9' POSTS	SPBGR 6' POSTS	SPBGR TYPE D 6' POSTS	TRAFFIC BARRIER TERMINAL TYPE 1, SPECIAL (TANGENT)	TRAFFIC BARRIER TERMINAL TYPE 6	TRAFFIC BARRIER TERMINAL TYPE 2	IMPACT ATT. (NON-REDIRC.) TEST LEVEL 3	FURNISHED EXCAVATION	GUARDRAIL REFLECTORS, TYPE A	TERMINAL MARKER - DIRECT APPLIED	BACKSIDE PROTECTION OF GUARDRAIL
MADISON												
S.B. IL 100	26245	22375			11		4			69	11	
N.B. IL 100	3212		2600		5		3	68		22	5	2487.5
MED. IL 100	20787			20233.5				7		141		
SUB-TOTAL	50244	22375	2600	20233.5	16	0	7	7	68	232	16	2487.5
JERSEY												
S.B. IL 100	607.5	3450	50		2	2	1	34		8	2	
N.B. IL 100	777	325			3	3		68		8	3	50
MED. IL 100				1587.5								
SUB-TOTAL	1384.5	3775	50	1587.5	5	5	1	2	102	16	5	50
GRAND TOTAL	51628.5	26150	2650	21821	21	5	8	9	170	248	21	2537.5

GUTTER & BIKE PATH SCHEDULE							
LOCATION			GUTTER REMOVAL	PAVEMENT REMOVAL	CONCRETE GUTTER, TYPE A	AGG. BASE COURSE, TYPE B	INCIDENTAL HMA SURFACING
M.P.	TO	M.P.	(FOOT)	(SQ YD)	(FOOT)	(TON)	(TON)
2.06	TO	2.16	542	90	542	6.00	11
TOTAL			542	90	542	6	11

MODEL: Default
 FILE: \\nrcs-pix\planner\room.dat\illinois.gov\PIWIDOT\Documents\DOT_Offices\District 8\Projects\076N57\CADD\076N57\076N57-shc-plan.dgn

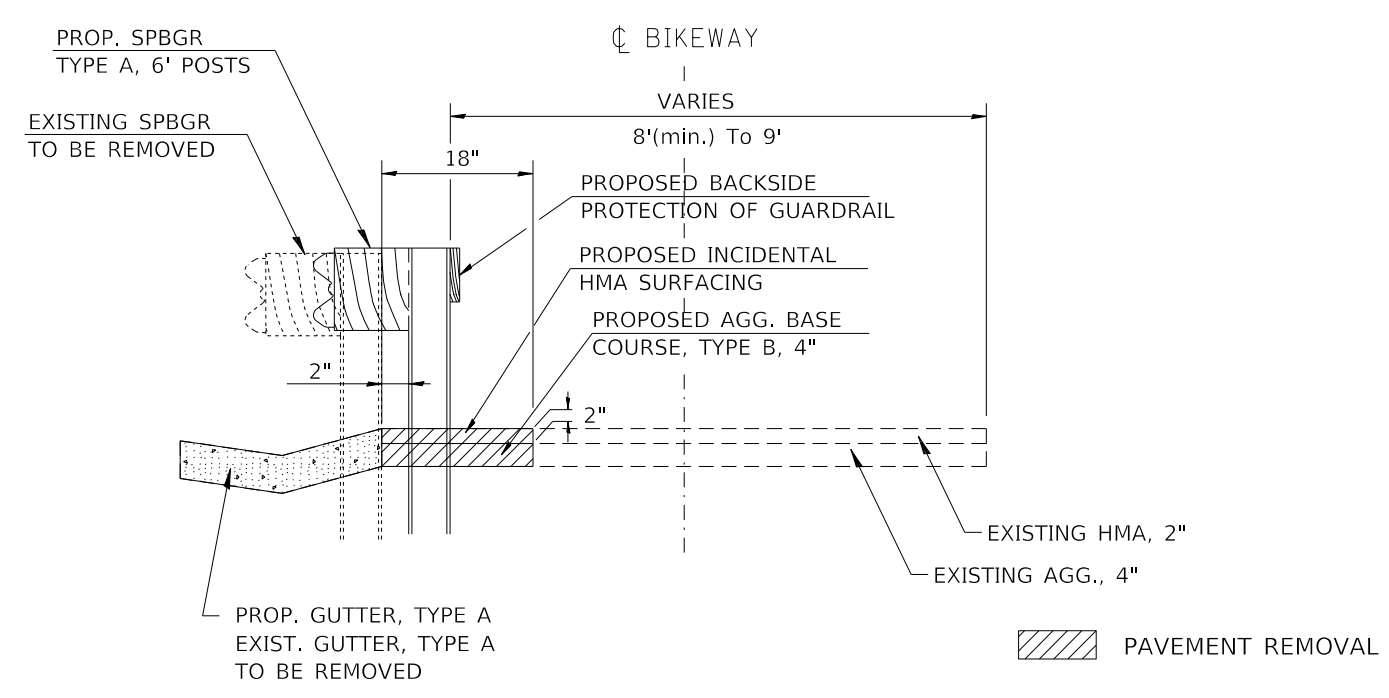
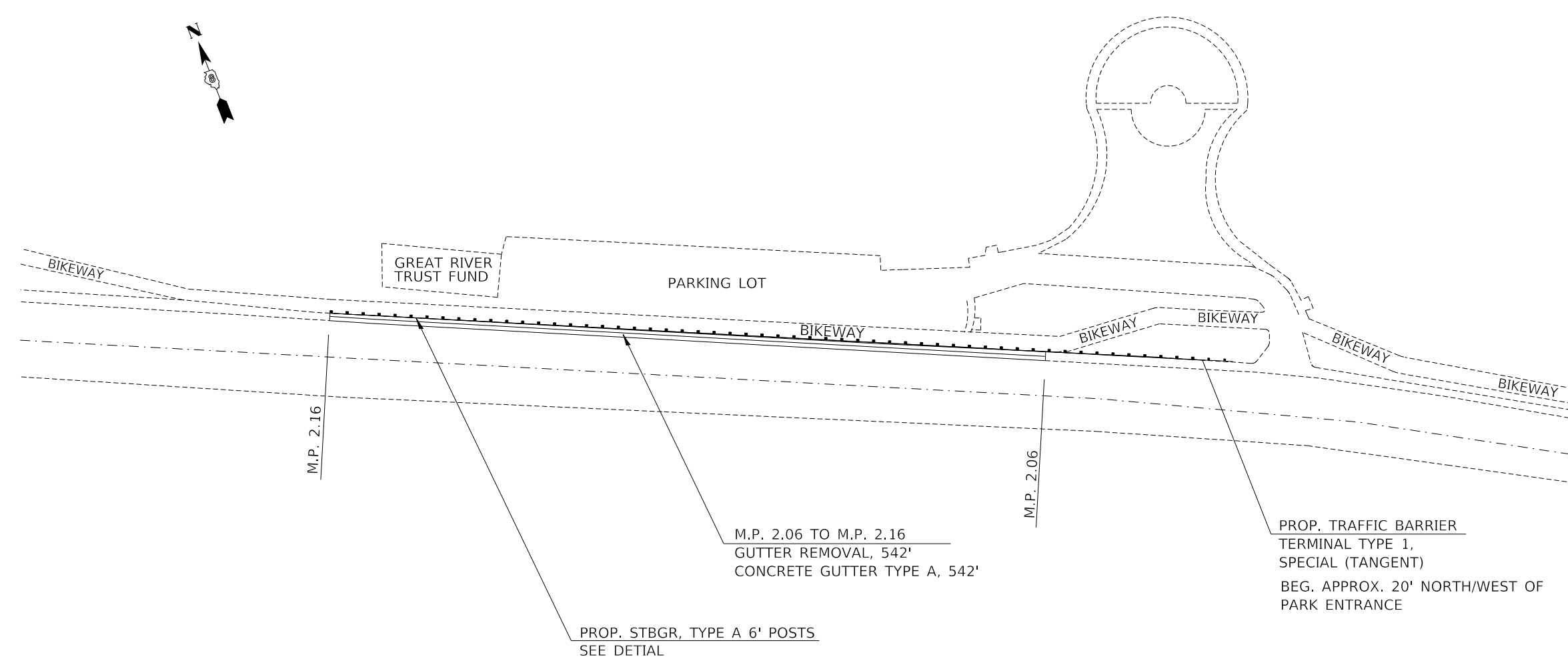
USER NAME = dintelmanjn	DESIGNED -	REVISED -
	DRAWN -	REVISED -
PLOT SCALE = 100.0000' / in.	CHECKED -	REVISED -
PLOT DATE = 3/20/2020	DATE -	REVISED -

**STATE OF ILLINOIS
DEPARTMENT OF TRANSPORTATION**

SCHEDULE OF QUANTITIES

SCALE: SHEET OF SHEETS STA. TO STA.

F.A.P. RTE.	SECTION	COUNTY	TOTAL SHEETS	SHEET NO.
304	(402,403,404,405)GR	*	14	10
CONTRACT NO. 76N57				
		ILLINOIS	FED. AID PROJECT	



DETAIL

MODEL: Default
 FILE: \\nrcs-pix\pub\room\dat\illinois.gov\PWIDOT\Documents\DOT_Offices\District 8\Projects\076N57\CADD\03a\CAD\sheet\076N57-shc-dbar.dgn

USER NAME = dintelmanjn	DESIGNED -	REVISED -
PLOT SCALE = 100,0000' / in.	DRAWN -	REVISED -
PLOT DATE = 3/20/2020	CHECKED -	REVISED -
	DATE -	REVISED -

STATE OF ILLINOIS
DEPARTMENT OF TRANSPORTATION

GUARDRAIL AND GUTTER DETAILS			
SCALE:	SHEET 4	OF 4	SHEETS
	STA.		TO STA.

F.A.P. RTE.	SECTION	COUNTY	TOTAL SHEETS	SHEET NO.
304	(402,403,404,405)GR	MADISON	14	11
			CONTRACT NO. 76N57	
		ILLINOIS	FED. AID PROJECT	

BEGIN PROJECT
M.P. 0.00



END PROJECT
M.P. 5.87



MODEL: Default
FILE: Model2_Plan\planroom.dwg\Illinois.gov\PWIDOT\Documents\DOT_Offices\District 8\Projects\076N57\CADD\ataCAD\sheet\076N57-shc-plan.dgn

USER NAME = dintelmanjn	DESIGNED -	REVISED -
	DRAWN -	REVISED -
PLOT SCALE = 100,0000' / in.	CHECKED -	REVISED -
PLOT DATE = 3/20/2020	DATE -	REVISED -

**STATE OF ILLINOIS
DEPARTMENT OF TRANSPORTATION**

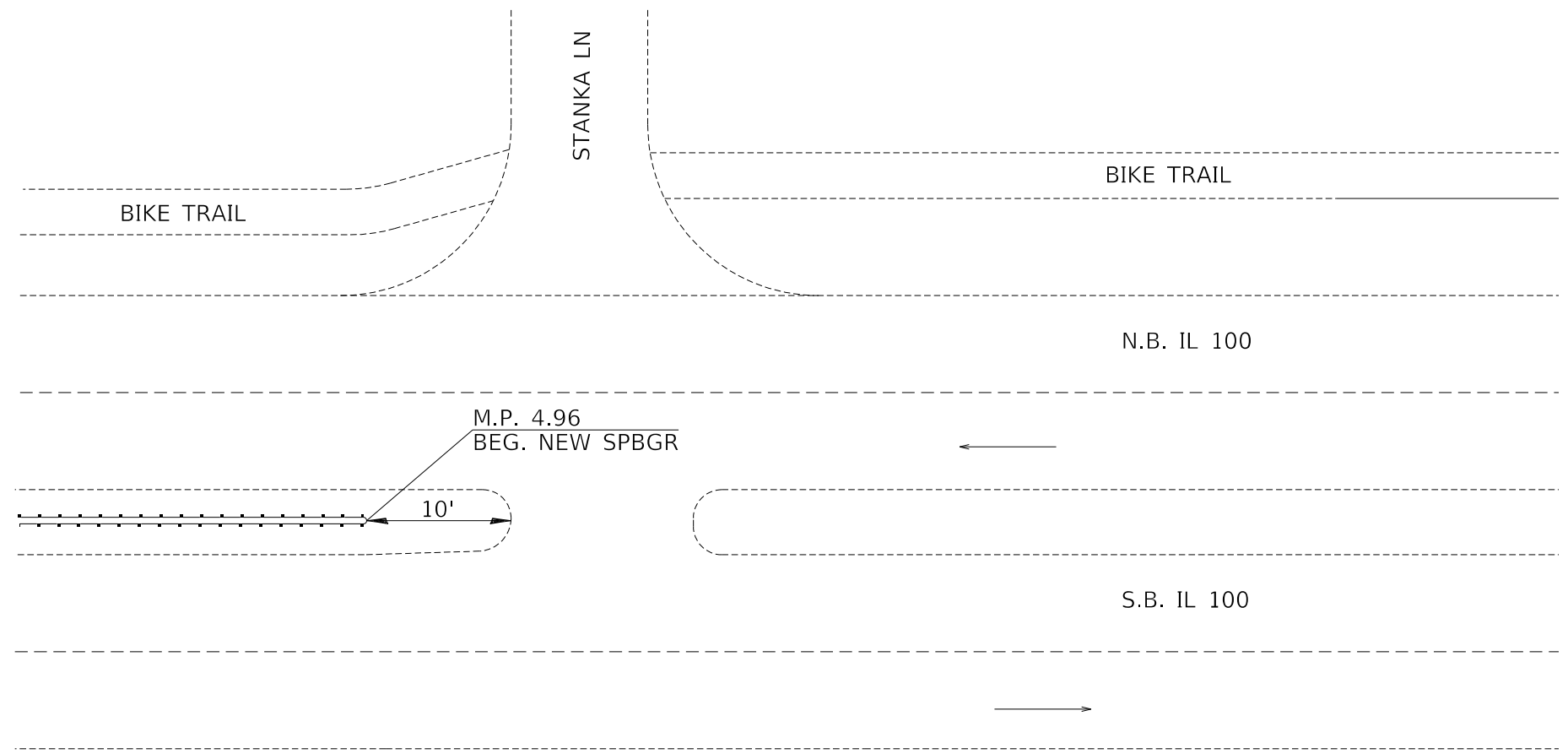
BEGIN AND END LOCATIONS

SCALE: SHEET 4 OF 4 SHEETS STA. TO STA.

F.A.P. RTE.	SECTION	COUNTY	TOTAL SHEETS	SHEET NO.
304	(402,403,404,405)GR	MADISON	14	12
CONTRACT NO. 76N57				
		ILLINOIS	FED. AID PROJECT	



M.P. 4.96
BEG. NEW SPBGR



DETAIL AT M.P. 4.96

MODEL: Default
 FILE: \\nrcs-pix\plannerroom\data\illinois.gov\PIWIDOT\Documents\DOT_Offices\District 8\Projects\076N57\CADD\ata\CAD\sheet\076N57-shc-plan.dgn

USER NAME = dintelmanjn	DESIGNED -	REVISED -
	DRAWN -	REVISED -
PLOT SCALE = 100,0000' / in.	CHECKED -	REVISED -
PLOT DATE = 3/20/2020	DATE -	REVISED -

**STATE OF ILLINOIS
DEPARTMENT OF TRANSPORTATION**

NEW SPBGR DETAIL

SCALE: SHEET 4 OF 4 SHEETS STA. TO STA.

F.A.P. RTE.	SECTION	COUNTY	TOTAL SHEETS	SHEET NO.
304	(402,403,404,405)GR	MADISON	14	13
ILLINOIS FED. AID PROJECT			CONTRACT NO. 76N57	

