

STATE OF ILLINOIS
DEPARTMENT OF TRANSPORTATION

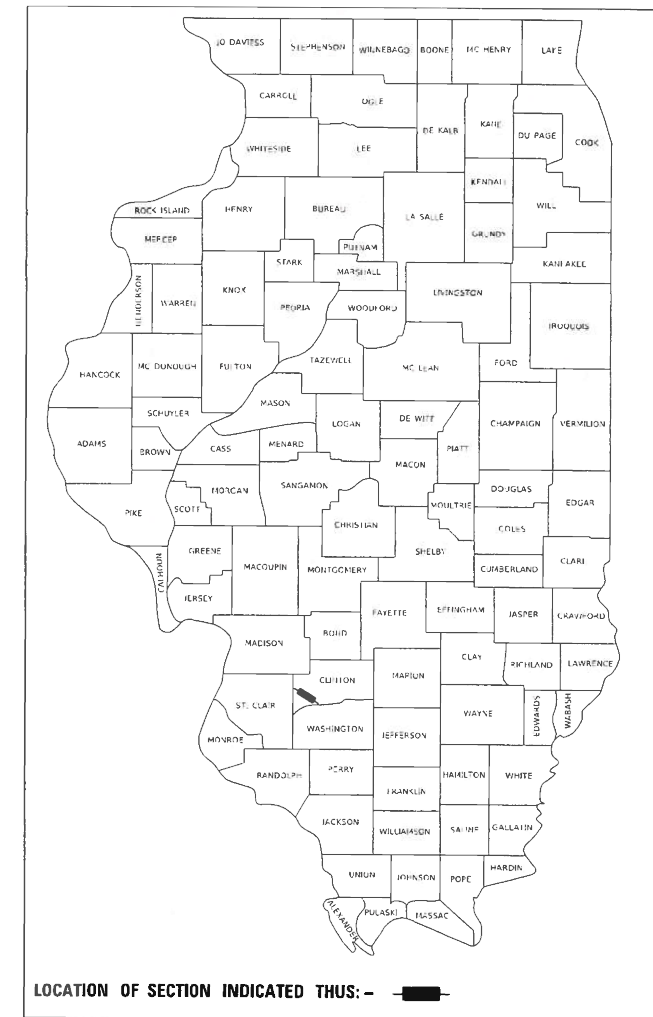
F.A.I. RTE.	SECTION	COUNTY	TOTAL SHEETS	SHEET NO.
64	14-1RS-2	CLINTON	9	1
		ILLINOIS	CONTRACT NO. 76N81	

FOR INDEX OF SHEETS, SEE SHEET NO. 2

PROPOSED HIGHWAY PLANS

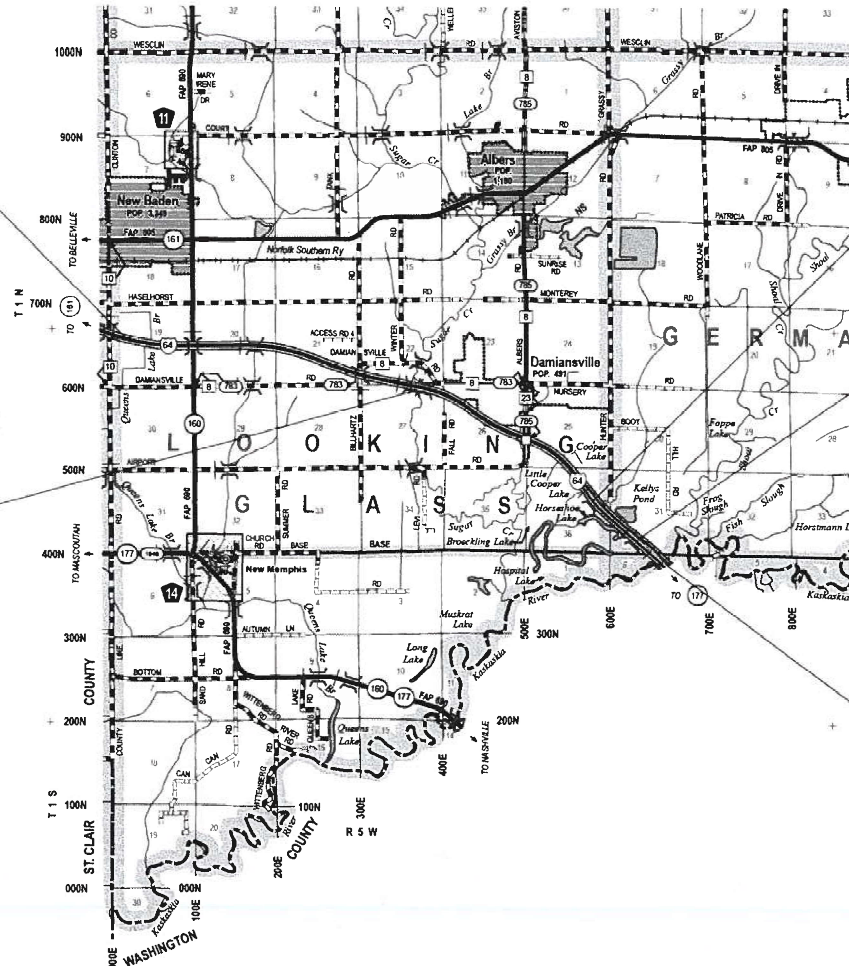
FAI ROUTE 64 (I-064)
SECTION 14-1RS-2
PROJECT NHPP-C5VH(730)
ULTRA-THIN BONDED WEARING COURSE
CLINTON COUNTY

D-98-107-20



C-98-118-20

BEGIN PROJECT
STA. 1475+15
LAT: 38.518719
LONG: -89.705221

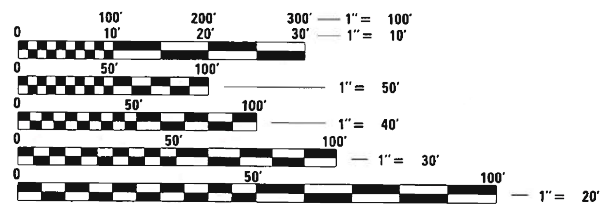


BRIDGE OMISSION
014-0045 (WB)
STA. 1801+94 TO STA. 1803+20
014-0044 (EB)
STA. 1802+07 TO STA. 1803+25

BRIDGE OMISSION
014-0047 (WB)
1839+54 STA. TO STA. 1843+39
014-0046 (EB)
STA. 1836+65 TO STA. 1840+71

BRIDGE OMISSION
014-0040 & 014-0041
STA. 1654+88 TO STA. 1657+12
014-0042 & 014-0043
STA. 1662+83 TO STA. 1665+06

END PROJECT
STA. 1854+60 (WB)
STA. 1852+90 (EB)
LAT: 38.479196
LONG: -89.581346



FULL SIZE PLANS HAVE BEEN PREPARED USING STANDARD ENGINEERING SCALES. REDUCED SIZED PLANS WILL NOT CONFORM TO STANDARD SCALES. IN MAKING MEASUREMENTS ON REDUCED PLANS, THE ABOVE SCALES MAY BE USED.

J.U.L.I.E.
JOINT UTILITY LOCATION INFORMATION FOR EXCAVATORS
1-800-892-0123
OR 811

PROJECT ENGINEER: HERVE GELIN (618) 346-3179
PROJECT MANAGER: BILLIE OWEN (618) 346-3209

CONTRACT NO. 76N81

GROSS LENGTH = 37,945 FT. = 7.19 MILE
NET LENGTH = 36,804 FT EB . = 6.97 MILE
NET LENGTH = 36,987 FT WB . = 7.01 MILE

STATE OF ILLINOIS
DEPARTMENT OF TRANSPORTATION

SUBMITTED March 26, 2020
Keith Robust REGIONAL ENGINEER
May 8, 2020
Joe E. Elk ENGINEER OF DESIGN AND ENVIRONMENT
May 8, 2020
James J. Gu DIRECTOR OF HIGHWAYS PROJECT IMPLEMENTATION

PRINTED BY THE AUTHORITY
OF THE STATE OF ILLINOIS

INDEX OF SHEETS

1. COVER SHEET
2. INDEX OF SHEETS, HIGHWAY STANDARDS, GENERAL NOTES, COMMITMENTS, ADT
- 3-4. SUMMARY OF QUANTITIES
- 5-6. TYPICAL SECTIONS
- 7-8. SCHEDULE OF QUANTITIES
9. TRANSITION DETAIL

HIGHWAY STANDARDS

- 000001-07 STANDARD SYMBOLS ABBREVIATIONS & PATTERNS
- 442201-03 CLASS C AND D PATCHES
- 701400-09 APPROACH TO LANE CLOSURE - FREEWAY EXPRESSWAY
- 701401-12 LANE CLOSURE FREEWAY EXPRESSWAY
- 701411-09 LANE CLOSURE MULTI-LANE - ENTRANCE OR EXIT RAMP 45MPH OR MORE
- 701428-01 TRAFFIC CONTROL SETUP REMOVAL FREEWAY EXPRESSWAY
- 701901-08 TRAFFIC CONTROL DEVICES
- 780001-05 TYPICAL PAVEMENT MARKINGS
- 781001-04 TYPICAL APPLICATION RAISED REFLECTIVE PAVEMENT MARKERS

ADT

- 2019 ADT = 30700 (ACTUAL)
- 2020 ADT = 31100 (ESTIMATED)
- 2040 ADT = 39400 (ESTIMATED)
- SU = 3.2% MU = 25.4%

GENERAL NOTES

1. NO SURVEY WAS PERFORMED FOR THIS PROJECT AND THE PLANS WERE CREATED USING MICROFILM AND FIELD MEASUREMENTS.
2. TWO CHANGEABLE MESSAGE BOARDS SHALL BE REQUIRED FOR THIS PROJECT. THEY SHALL BE PLACED TWO WEEKS PRIOR TO ANY LANE CLOSURE. THE CHANGEABLE MESSAGE BOARDS SHALL BE PLACED ALONG I-64 AS DIRECTED BY THE ENGINEER.
3. ALL STRUCTURES ARE OMITTED FROM THE CONTRACT.
4. RAPID SETTING POLYMER MODIFIED EMULSION HAS A PLANNED RESIDUAL ASPHALT APPLICATION RATE OF 0.19 LB/SQFT.
5. THE SURFACE REMOVAL TRANSITION FROM 3/4" TO 0.9" THICK AT THE PROJECT TERMINI AND OMISSIONS SHALL BE INCLUDED IN THE COST OF HOT-MIX ASPHALT SURFACE REMOVAL, 3/4", NO ADDITIONAL COMPENSATION WILL BE ALLOWED.
6. THE VOID IN THE PAVEMENT WHICH RESULTS FROM THE RAISED REFLECTIVE PAVEMENT MARKER REMOVAL SHALL BE REPAIRED WITH MATERIAL AS DIRECTED BY THE ENGINEER. THE MATERIAL AND WORK SHALL BE PAID FOR IN ACCORDANCE WITH ARTICLE 783 OF THE STANDARD SPECIFICATIONS.
7. THE FOLLOWING MIXTURE REQUIREMENT ARE APPLICABLE FOR THIS PROJECT.

			Partial Depth Patch
MIXTURE USE		ULTRA-THIN BWC	POLY BINDER
AC/PG			SBS PG 76-22
RAP % (MAX)			SEE SPECIAL PROVISION
DESIGN AIR VOIDS			4.0%
			@Ndes=90
MIX COMPOSITION (Gradation)		IL 12.5 UTB	IL 19.0
FRICTION AGG		MIXTURE "E"	MIXTURE "B"
QUALITY MGMT PROGRAM			QC/QA

Plan quantities for Bituminous Concrete Surface Course items are calculated using a unit weight of 112 lb/sq yd/in (59.8 kg/sq m/25 mm thickness).

COMMITMENTS

NO COMMITMENTS

MODEL: I:\MODEL\MHFS FILE: MHFS_Plan\Illuminoma.dwg Illinois.gov\PWIDOT\Documents\IDOT_Offices\IDOT\I-CADD\DATA\CAD\Projects\076818-1-14-14\gennote.dgn

USER NAME = AGBOOLATO	DESIGNED -	REVISED -
	DRAWN -	REVISED -
PLOT SCALE = 100.0000 ' / in.	CHECKED -	REVISED -
PLOT DATE = 3/27/2020	DATE -	REVISED -

**STATE OF ILLINOIS
DEPARTMENT OF TRANSPORTATION**

**INDEX OF SHEETS, HIGHWAY STANDARDS
GENERAL NOTES, COMMITMENTS, ADT**

SCALE: SHEET OF SHEETS STA. TO STA.

F.A.J. RTE.	SECTION	COUNTY	TOTAL SHEETS	SHEET NO.
64	14-1RS-2	CLINTON	9	2
CONTRACT NO. 76N81				
ILLINOIS FED. AID PROJECT				

CODE NO.	ITEM	UNIT	TOTAL QUANTITY	CONSTR. CODE
				80% FED 20% STATE
				ROADWAY
				0005 NONE
40600250	RAPID SETTING POLYMER MODIFIED EMULSION	POUND	336467	336467
40600990	TEMPORARY RAMP	SQ YD	178	178
44000152	HOT-MIX ASPHALT SURFACE REMOVAL, 3/4"	SQ YD	196764	196764
44200629	CLASS A PATCHES, TYPE I, 15 INCH	SQ YD	20	20
44200630	CLASS A PATCHES, TYPE II, 15 INCH	SQ YD	12	12
44200631	CLASS A PATCHES, TYPE III, 15 INCH	SQ YD	18	18
44200632	CLASS A PATCHES, TYPE IV, 15 INCH	SQ YD	53	53
44209000	LONGITUDINAL PARTIAL DEPTH PATCHING	TON	199	199
44213000	PATCHING REINFORCEMENT	SQ YD	107	107
44213200	SAW CUTS	FOOT	724	724
44213204	TIE BARS 3/4"	EACH	80	80
67100100	MOBILIZATION	L SUM	1	1
70100420	TRAFFIC CONTROL AND PROTECTION, STANDARD 701411	EACH	4	4
70100800	TRAFFIC CONTROL AND PROTECTION, STANDARD 701401	L SUM	1	1

CODE NO.	ITEM	UNIT	TOTAL QUANTITY	CONSTR. CODE
				80% FED 20% STATE
				ROADWAY
				0005 NONE
70107025	CHANGEABLE MESSAGE SIGN	CAL DA	112	112
70200100	NIGHTTIME WORK ZONE LIGHTING	L SUM	1	1
70300100	SHORT TERM PAVEMENT MARKING	FOOT	12611	12611
70300150	SHORT TERM PAVEMENT MARKING REMOVAL	SQ FT	4204	4204
70300240	TEMPORARY PAVEMENT MARKING - LINE 6"	FOOT	166020	166020
* 78000400	THERMOPLASTIC PAVEMENT MARKING - LINE 6"	FOOT	166020	166020
* 78100100	RAISED REFLECTIVE PAVEMENT MARKER	EACH	1845	1845
78300200	RAISED REFLECTIVE PAVEMENT MARKER REMOVAL	EACH	1845	1845
X0300028	ULTRA-THIN BONDED WEARING COURSE, IL-12.5 UTB, MIX "E"	SQ YD	196764	196764
X4405065	LONGITUDINAL PARTIAL DEPTH REMOVAL 6 1/2"	FOOT	4480	4480
X4406065	PARTIAL DEPTH REMOVAL, TYPE I, 6.5"	SQ YD	27	27
X4406265	PARTIAL DEPTH REMOVAL, TYPE II, 6.5"	SQ YD	171	171
X4406465	PARTIAL DEPTH REMOVAL, TYPE III, 6.5"	SQ YD	67	67
X4406665	PARTIAL DEPTH REMOVAL, TYPE IV, 6.5"	SQ YD	120	120

* SPECIALTY ITEM

MODEL: I:\MODEL\MRF1
FILE: MRF1.dwg
PROJECT: I:\Projects\DOT\Documents\DOT_Offices\Bartlett\14\DDData\CAD\Inlets\DOT76818-1-11-500.dgn

USER NAME = AGBOOLATO	DESIGNED -	REVISED -
	DRAWN -	REVISED -
PLOT SCALE = 100.0000' / in.	CHECKED -	REVISED -
PLOT DATE = 3/27/2020	DATE -	REVISED -

**STATE OF ILLINOIS
DEPARTMENT OF TRANSPORTATION**

SUMMARY OF QUANTITIES

SCALE: SHEET 1 OF 2 SHEETS STA. TO STA.

F.A.J. RTE.	SECTION	COUNTY	TOTAL SHEETS	SHEET NO.
64	14-1R5-2	CLINTON	9	3
			CONTRACT NO. 76N81	
ILLINOIS FED. AID PROJECT				

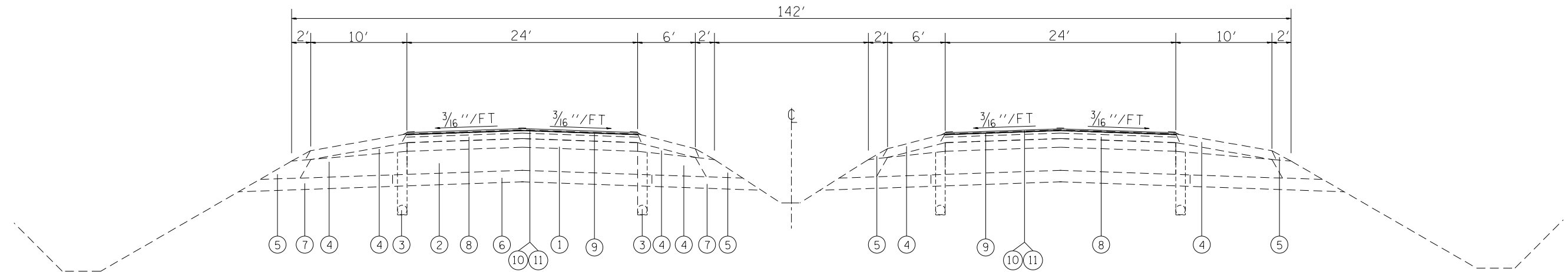
CODE NO.	ITEM	UNIT	TOTAL QUANTITY	CONSTR. CODE
				80% FED 20% STATE
				ROADWAY
				0005
				NONE
X4421000	PARTIAL DEPTH PATCHING	TON	128	128
X7030005	TEMPORARY PAVEMENT MARKING REMOVAL	SQ FT	55340	55340
Ø Z0076600	TRAINEES	HOUR	1500	1500
Ø Z0076604	TRAINEES TRAINING PROGRAM GRADUATE	HOUR	1500	1500

Ø 0042

MODEL: \\MODEL\MHIES
 FILE: \\MHIES_PIC\gibson\com.dat\Illinois\gov\PIV\DOT\Documents\DOT_Offices\Bartlett_B\Projects\ID7\6181\CADD\ata\CAD\Sheets\ID7\6181-1-sh-500.dgn

REV. - MS

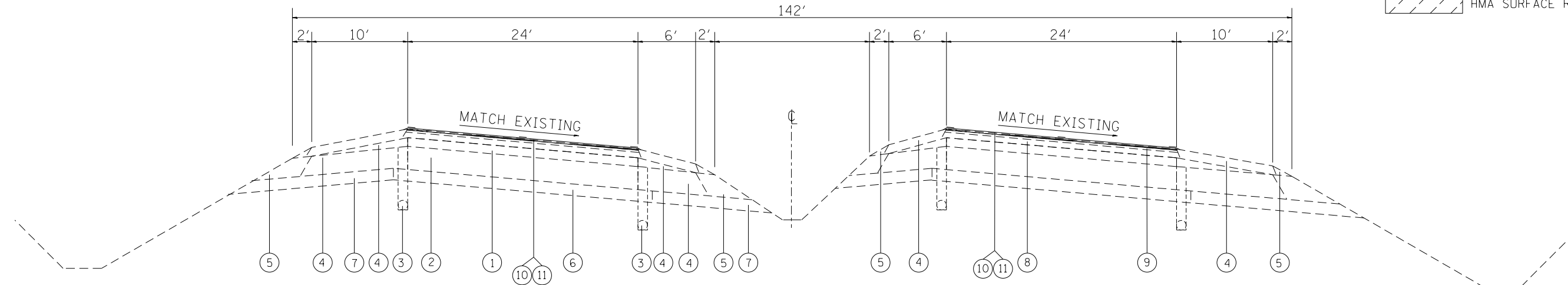
USER NAME = agboolato	DESIGNED -	REVISED -	STATE OF ILLINOIS DEPARTMENT OF TRANSPORTATION	SUMMARY OF QUANTITIES			F.A.I RTE.	SECTION	COUNTY	TOTAL SHEETS	SHEET NO.
	DRAWN -	REVISED -		64	14-1R5-2	CLINTON	9	4			
PLOT SCALE = 100.0312 ' / In.	CHECKED -	REVISED -		CONTRACT NO. 76N81							
PLOT DATE = 3/26/2020	DATE -	REVISED -		SCALE:	SHEET 2	OF 2	SHEETS	STA.	TO STA.	ILLINOIS FED. AID PROJECT	



TANGENT SECTION

STA 1504+12.81 TO STA 1546+08.44
 STA 1591+36.16 TO STA 1658+96.98
 STA 1695+96.98 TO STA 1705+51.13
 STA 1730+74.46 TO STA 1740+45.09
 STA 1772+88.83 WB TO STA 1783+00.00 WB
 STA 1778+36.32 EB TO STA 1782+40.00 EB

HMA SURFACE REMOVAL 3/4"



SUPERELEVATED SECTION

RIGHT EDGE OF PAVEMENT SUPERELEVATED
 STA 1475+15.00 TO STA 1502+12.81
 STA 1707+51.13 TO STA 1728+74.46

LEFT EDGE OF PAVEMENT SUPERELEVATED
 STA 1548+08.44 TO STA 1590+36.16
 STA 1660+96.98 TO STA 1693+98.51
 STA 1742+45.08 TO STA 1770+88.33 WB
 STA 1742+45.09 TO STA 1776+39.32 EB

LEGEND

- ① EXISTING RESURFACING 3/4"
- ② EXISTING 8" CONTINUOUSLY REINFORCED PCC PAVEMENT
- ③ EXISTING PIPE UNDERDRAINS, 4"
- ④ EXISTING BITUMINOUS SHOULDER
- ⑤ EXISTING AGGREGATE SHOULDER
- ⑥ EXISTING BAM STABILIZED SUB-BASE 4"
- ⑦ EXISTING TYPE C SUB-BASE 4"
- ⑧ EXISTING BITUMINOUS BINDER (MACHINE METHOD) 1 3/4"
- ⑨ EXISTING BITUMINOUS SURFACE COURSE MIX D, CLASS I 1 1/2"
- ⑩ PROPOSED RAPID SETTING POLYMER MODIFIED EMULSION
- ⑪ PROPOSED ULTRA-THIN BONDED WEARING COURSE

MODEL: I:\MODEL\MARTE
 FILE: MARTE_Plan\pblm\moma.dwg
 PROJECT: RWIS\DOT Documents\DOT Office\DOT\14-1RS-2\14-1RS-2\14-1RS-2.dwg
 PLOT DATE: 3/26/2020

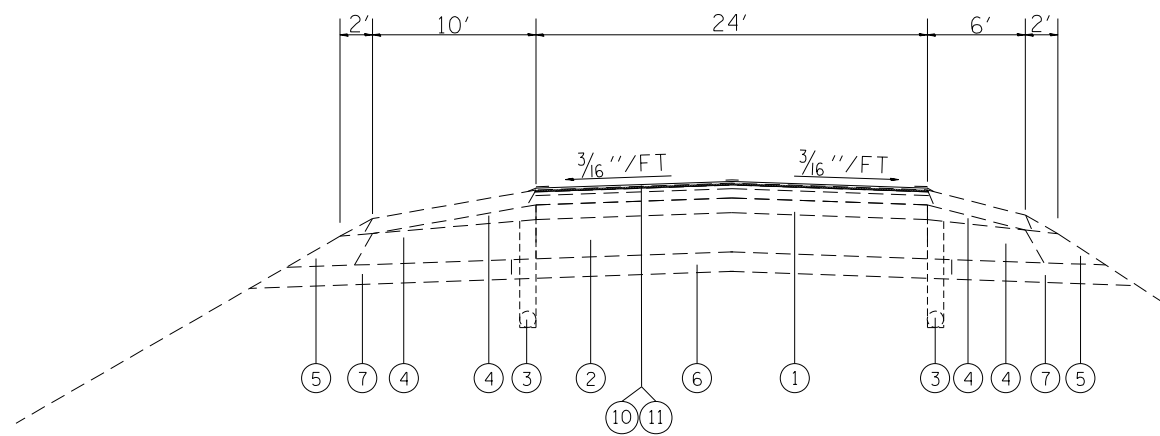
USER NAME = agboolato	DESIGNED -	REVISED -
	DRAWN -	REVISED -
PLOT SCALE = 100,0000' / in.	CHECKED -	REVISED -
PLOT DATE = 3/26/2020	DATE -	REVISED -

**STATE OF ILLINOIS
 DEPARTMENT OF TRANSPORTATION**

TYPICAL SECTIONS

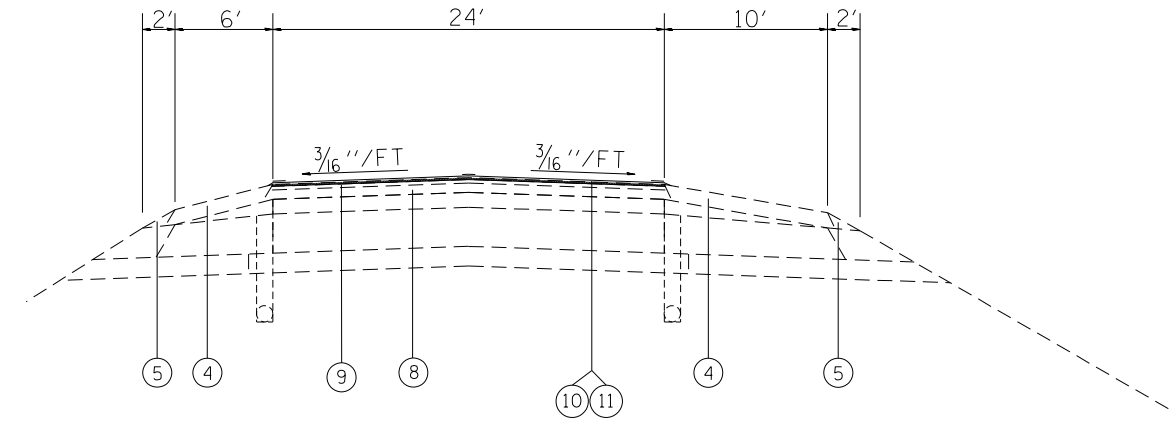
SCALE: SHEET 1 OF 2 SHEETS STA. TO STA.

F.A.J. RTE.	SECTION	COUNTY	TOTAL SHEETS	SHEET NO.
64	14-1RS-2	CLINTON	9	5
CONTRACT NO. 76N81				
ILLINOIS FED. AID PROJECT				



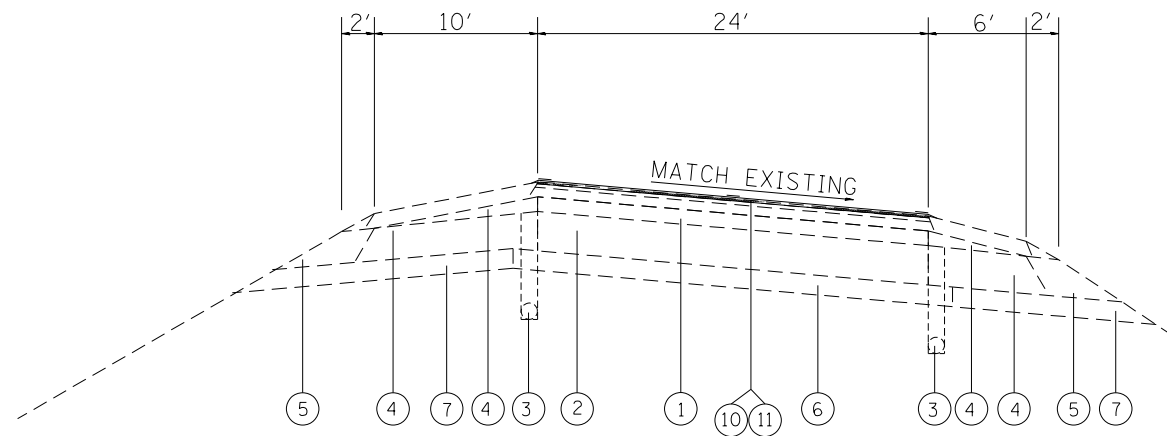
TANGENT SECTION - VARIABLE MEDIAN

WESTBOUND ROADWAY
 STA 1783+00.00 TO STA 1798+12.13
 STA 1826+08.51 TO STA 1834+95.67



EASTBOUND ROADWAY
 STA 1782+40.00 TO STA 1786+07.19
 STA 1810+25.27 TO STA 1850+33.07

HMA SURFACE REMOVAL 3/4"



SUPERELEVATED SECTION - VARIABLE MEDIAN

WESTBOUND ROADWAY
 LEFT EDGE OF PAVEMENT SUPERELEVATED
 STA 1836+95.67 TO STA 1854+60.09

EASTBOUND ROADWAY
 RIGHT EDGE OF PAVEMENT SUPERELEVATED
 STA 1852+33.07 TO STA 1852+90.11

LEGEND

- ① EXISTING RESURFACING 3/4"
- ② EXISTING 8" CONTINUOUSLY REINFORCED PCC PAVEMENT
- ③ EXISTING PIPE UNDERDRAINS, 4"
- ④ EXISTING BITUMINOUS SHOULDER
- ⑤ EXISTING AGGREGATE SHOULDER
- ⑥ EXISTING BAM STABILIZED SUB-BASE 4"
- ⑦ EXISTING TYPE C SUB-BASE 4"
- ⑧ EXISTING BITUMINOUS BINDER (MACHINE METHOD) 1 3/4"
- ⑨ EXISTING BITUMINOUS SURFACE COURSE MIX D, CLASS I 1 1/2"
- ⑩ PROPOSED RAPID SETTING POLYMER MODIFIED EMULSION
- ⑪ PROPOSED ULTRA-THIN BONDED WEARING COURSE

MODEL: \\MODELNAME
 FILE: \\NAME.Plot\p1411m100m.mxd\Illinois.gov\PWIDOT\Documents\DOT_Offices\District_8\Projects\076818\14\00Data\CAD\Sheet\076818-1-shc-tp1c1.dgn

USER NAME = agboolato	DESIGNED -	REVISED -
	DRAWN -	REVISED -
PLOT SCALE = 100,0000' / in.	CHECKED -	REVISED -
PLOT DATE = 3/26/2020	DATE -	REVISED -

STATE OF ILLINOIS
 DEPARTMENT OF TRANSPORTATION

TYPICAL SECTIONS

SCALE: SHEET 2 OF 2 SHEETS STA. TO STA.

F.A.J. RTE.	SECTION	COUNTY	TOTAL SHEETS	SHEET NO.
64	14-1R5-2	CLINTON	9	6
CONTRACT NO. 76N81				
ILLINOIS FED. AID PROJECT				

TEMPORARY RAMP SCHEDULE			
STATION	LOCATION	WIDTH	TEMPORARY RAMP
I-64 WESTBOUND		FOOT	SQ YD
1475+15	START	24	8.9
1654+88	SN 014-0041	24	8.9
1657+12	SN 014-0041	24	8.9
1662+83	SN 014-0043	24	8.9
1665+06	SN 014-0043	24	8.9
1801+94	SN 014-0045	24	8.9
1803+20	SN 014-0045	24	8.9
1839+54	SN 014-0047	24	8.9
1843+39	SN 014-0047	24	8.9
1854+60	END	24	8.9
I-64 EASTBOUND			
1475+15	START	24	8.9
1654+88	SN 014-0040	24	8.9
1657+12	SN 014-0040	24	8.9
1662+82	SN 014-0042	24	8.9
1665+08	SN 014-0042	24	8.9
1802+07	SN 014-0044	24	8.9
1803+25	SN 014-0044	24	8.9
1836+65	SN 014-0046	24	8.9
1840+71	SN 014-0046	24	8.9
1852+90	END	24	8.9
TOTAL :			178

PAVEMENT MARKING SCHEDULE											
STATION TO STATION			TEMPORARY PAVEMENT MARKING			THERMOPLASTIC PAVEMENT MARKING LINE -			SHORT TERM PAVEMENT MARKING	SHORT TERM PAVEMENT MARKING REMOVAL	TEMPORARY PAVEMENT MARKING REMOVAL
			6" SKIP-DASH WHITE	6" SOLID WHITE	6" SOLID YELLOW	6" SKIP-DASH WHITE	6" SOLID WHITE	6" SOLID YELLOW			
STA	TO	STA	FOOT	FOOT	FOOT	FOOT	FOOT	FOOT	FOOT	SQ FT	SQ FT
I-064 WESTBOUND											
1475+15	TO	1654+88	4493	17973	17973	4493	17973	17973	3072	1024	13479
1654+88	TO	1657+12									
1657+12	TO	1662+83	143	571	571	143	571	571	98	33	428
1662+83	TO	1665+06									
1665+06	TO	1801+94	3422	13688	13688	3422	13688	13688	2339	780	10266
1801+94	TO	1803+20									
1803+20	TO	1839+54	908	3634	3634	908	3634	3634	621	207	2725
1839+54	TO	1843+39									
1843+39	TO	1854+60	280	1121	1121	280	1121	1121	192	64	841
I-064 EASTBOUND											
1475+15	TO	1654+88	4493	17973	17973	4493	17973	17973	3072	1024	13479
1654+88	TO	1657+12									
1657+12	TO	1662+82	142	570	570	142	570	570	97	32	427
1662+82	TO	1665+08									
1665+08	TO	1802+07	3425	13699	13699	3425	13699	13699	2341	780	10274
1802+07	TO	1803+25									
1803+25	TO	1836+65	835	3340	3340	835	3340	3340	571	190	2505
1836+65	TO	1840+71									
1840+71	TO	1852+90	305	1219	1219	305	1219	1219	208	69	914
SUBTOTAL			18447	73787	73787	18447	73787	73787	12611	4204	55340
TOTAL				166020			166020		12611	4204	55340

RAISED PAVEMENT MARKERS				
LOCATION			RAISED REFLECTOR PAVEMENT MARKER REMOVAL	RAISED REFLECTOR PAVEMENT MARKER
STA	TO	STA	EACH	EACH
I-064 WESTBOUND				
1475+15	TO	1654+88	449	449
1654+88	TO	1657+12		
1657+12	TO	1662+83	14	14
1662+83	TO	1665+06		
1665+06	TO	1801+94	342	342
1801+94	TO	1803+20		
1803+20	TO	1839+54	91	91
1839+54	TO	1843+39		
1843+39	TO	1854+60	28	28
I-064 EASTBOUND				
1475+15	TO	1654+88	449	449
1654+88	TO	1657+12		
1657+12	TO	1662+82	14	14
1662+82	TO	1665+08		
1665+08	TO	1802+07	342	342
1802+07	TO	1803+25		
1803+25	TO	1836+65	84	84
1836+65	TO	1840+71		
1840+71	TO	1852+90	30	30
TOTAL :			1845	1845

RAPID SETTING POLYMER MODIFIED EMULSION			
STA	TO	STA	(POUNDS)
I-064 WESTBOUND			
1475+15	TO	1654+88	81955
1654+88	TO	1657+12	
1657+12	TO	1662+83	2605
1662+83	TO	1665+06	
1665+06	TO	1801+94	62417
1801+94	TO	1803+20	
1803+20	TO	1839+54	16571
1839+54	TO	1843+39	
1843+39	TO	1854+60	5113
I-064 EASTBOUND			
1475+15	TO	1654+88	81955
1654+88	TO	1657+12	
1657+12	TO	1662+82	2597
1662+82	TO	1665+08	
1665+08	TO	1802+07	62465
1802+07	TO	1803+25	
1803+25	TO	1836+65	15231
1836+65	TO	1840+71	
1840+71	TO	1852+90	5558
TOTAL :			336467

ULTRA-THIN BONDED WEARING COURSE			
STA	TO	STA	(SQ YD)
I-064 WESTBOUND			
1475+15	TO	1654+88	47927
1654+88	TO	1657+12	
1657+12	TO	1662+83	1523
1662+83	TO	1665+06	
1665+06	TO	1801+94	36501
1801+94	TO	1803+20	
1803+20	TO	1839+54	9690
1839+54	TO	1843+39	
1843+39	TO	1854+60	2990
I-064 EASTBOUND			
1475+15	TO	1654+88	47927
1654+88	TO	1657+12	
1657+12	TO	1662+82	1519
1662+82	TO	1665+08	
1665+08	TO	1802+07	36530
1802+07	TO	1803+25	
1803+25	TO	1836+65	8907
1836+65	TO	1840+71	
1840+71	TO	1852+90	3250
TOTAL :			196764

HOT MIX ASPHALT REMOVAL 3/4"			
STA	TO	STA	(SQ YD)
I-064 WESTBOUND			
1475+15	TO	1654+88	47927
1654+88	TO	1657+12	
1657+12	TO	1662+83	1523
1662+83	TO	1665+06	
1665+06	TO	1801+94	36501
1801+94	TO	1803+20	
1803+20	TO	1839+54	9690
1839+54	TO	1843+39	
1843+39	TO	1854+60	2990
I-064 EASTBOUND			
1475+15	TO	1654+88	47927
1654+88	TO	1657+12	
1657+12	TO	1662+82	1519
1662+82	TO	1665+08	
1665+08	TO	1802+07	36530
1802+07	TO	1803+25	
1803+25	TO	1836+65	8907
1836+65	TO	1840+71	
1840+71	TO	1852+90	3250
TOTAL :			196764

MODEL: I:\MODEL\MAMES
FILE: MAMES_Plan\Illuminoma.dwg
I:\Projects\07688\I\ADD\DATA\CAD\Illuminoma.dwg
I:\Projects\07688\I\ADD\DATA\CAD\Illuminoma.dwg
I:\Projects\07688\I\ADD\DATA\CAD\Illuminoma.dwg

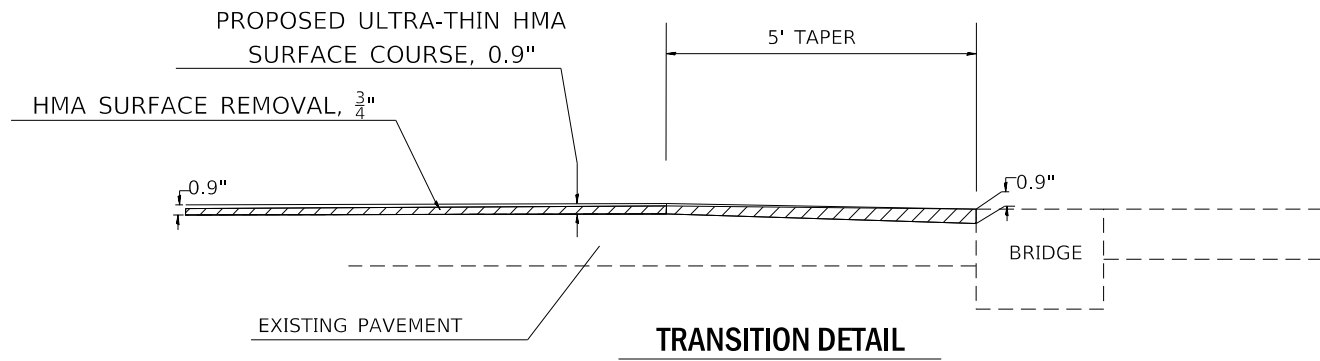
USER NAME = agboolato	DESIGNED -	REVISED -
	DRAWN -	REVISED -
PLOT SCALE = 100.0000 ' / in.	CHECKED -	REVISED -
PLOT DATE = 3/26/2020	DATE -	REVISED -

STATE OF ILLINOIS
DEPARTMENT OF TRANSPORTATION

SCHEDULE OF QUANTITIES

SCALE: SHEET 1 OF 2 SHEETS STA. TO STA.

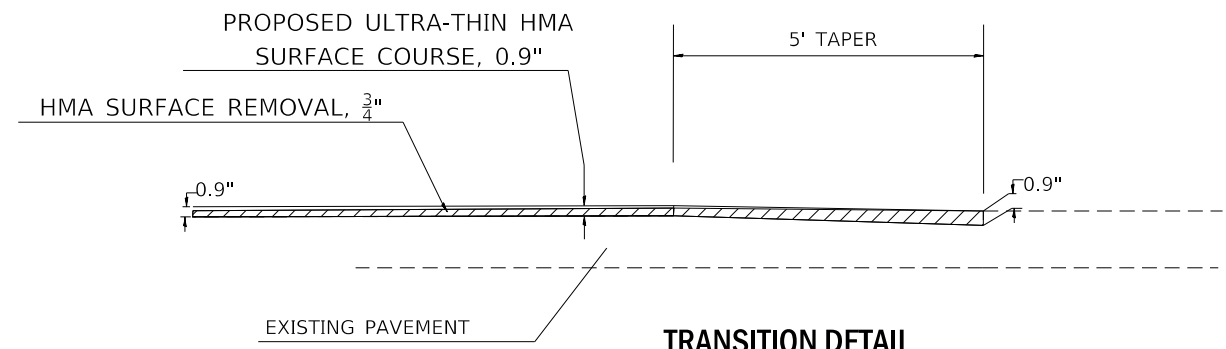
F.A.J. RTE.	SECTION	COUNTY	TOTAL SHEETS	SHEET NO.
64	14-1RS-2	CLINTON	9	7
CONTRACT NO. 76N81				
ILLINOIS FED. AID PROJECT				



TRANSITION DETAIL

EB	WB
014-0040	014-0041
014-0042	014-0043
014-0044	014-0045
014-0046	014-0047
095-0039	095-0040

NOT TO SCALE



TRANSITION DETAIL

STA. 1475+15 (EB/WB)

NOT TO SCALE

MODEL: I:\MODEL\NAME1
 FILE: NAME1_Plan\pblm\com.mxd\illinois.gov\PWIDOT\Documents\DOT_Offices\District 8\Projects\01475+15\14-1RS-2\14-1RS-2-11-11-11.dgn

USER NAME = agboolato	DESIGNED -	REVISED -
	DRAWN -	REVISED -
PLOT SCALE = 100,0000 ' / in.	CHECKED -	REVISED -
PLOT DATE = 3/26/2020	DATE -	REVISED -

STATE OF ILLINOIS
DEPARTMENT OF TRANSPORTATION

TRANSITION DETAIL

SCALE: SHEET 1 OF 1 SHEETS STA. TO STA.

F.A.J. RTE.	SECTION	COUNTY	TOTAL SHEETS	SHEET NO.
64	14-1RS-2	CLINTON	9	9
ILLINOIS FED. AID PROJECT			CONTRACT NO. 76N81	