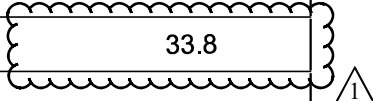


SUMMARY OF QUANTITIES

ROUTE: FAI 64 (I-64)
COUNTY: JEFFERSON
FUNDING: 90% FED/10% STATE
LOCATION: RURAL

CODE NUMBER	ITEM DESCRIPTION	UNIT	0013
4200080	PAVEMENT CONNECTOR (PCC) FOR BRIDGE APPROACH SLAB	SQ YD	107
42001300	PROTECTIVE COAT	SQ YD	1,082
44000100	PAVEMENT REMOVAL	SQ YD	191
44004250	PAVED SHOULDER REMOVAL	SQ YD	32
48300500	PORTLAND CEMENT CONCRETE SHOULDERS 10"	SQ YD	32
50102400	CONCRETE REMOVAL	CU YD	35.4
50157300	PROTECTIVE SHIELD	SQ YD	180
50200100	STRUCTURE EXCAVATION	CU YD	53
50300225	CONCRETE STRUCTURES	CU YD	33.8
50300255	CONCRETE SUPERSTRUCTURE	CU YD	17.9
50300260	BRIDGE DECK GROOVING	SQ YD	972
50301350	CONCRETE SUPERSTRUCTURE (APPROACH SLAB)	CU YD	49.5
50500405	FURNISHING AND ERECTING STRUCTURAL STEEL	POUND	1,590

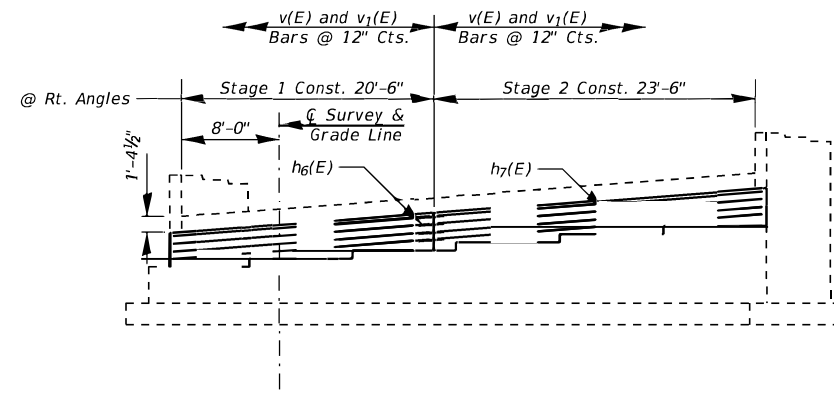


△ REV. 5-29-2020

REV. - MS

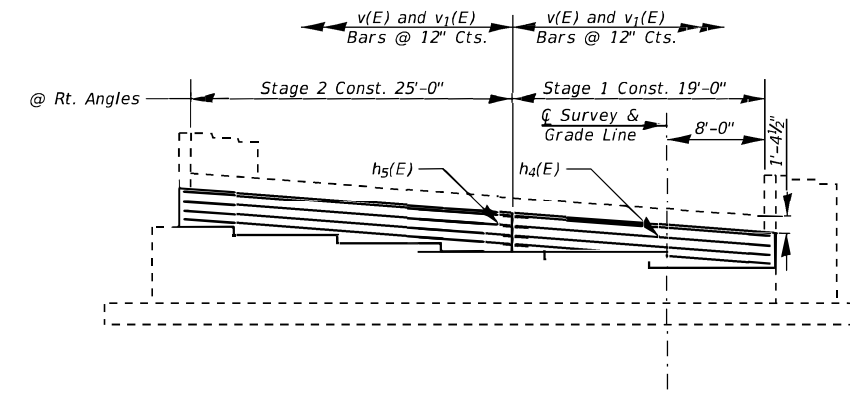
MODEL: Default
 FILE: M:\METS_Plan\planroom.dwg
 I:\Illinois\gov\IWDOT\Documents\DOT_Offices\District_9\Projects\78753\CADD\DATA\CAD\krets\09-78753-SHA-Cur_Seg_Index.dgn

USER NAME = adamsam DRAWN - CHECKED - DATE -	DESIGNED - DRAWN - CHECKED - DATE -	REVISED - REVISED - REVISED - REVISED -	STATE OF ILLINOIS DEPARTMENT OF TRANSPORTATION	SUMMARY OF QUANTITIES	SCALE: SHEET OF SHEETS STA. TO STA.
			F.A.I. RTE. SECTION COUNTY TOTAL SHEETS SHEET NO.		
			64 D9 BRIDGE REPAIR 2020-5 JEFFERSON 21 4		
			CONTRACT NO. 78753		
			ILLINOIS FED. AID PROJECT		



WEST ABUTMENT

Looking West



EAST ABUTMENT

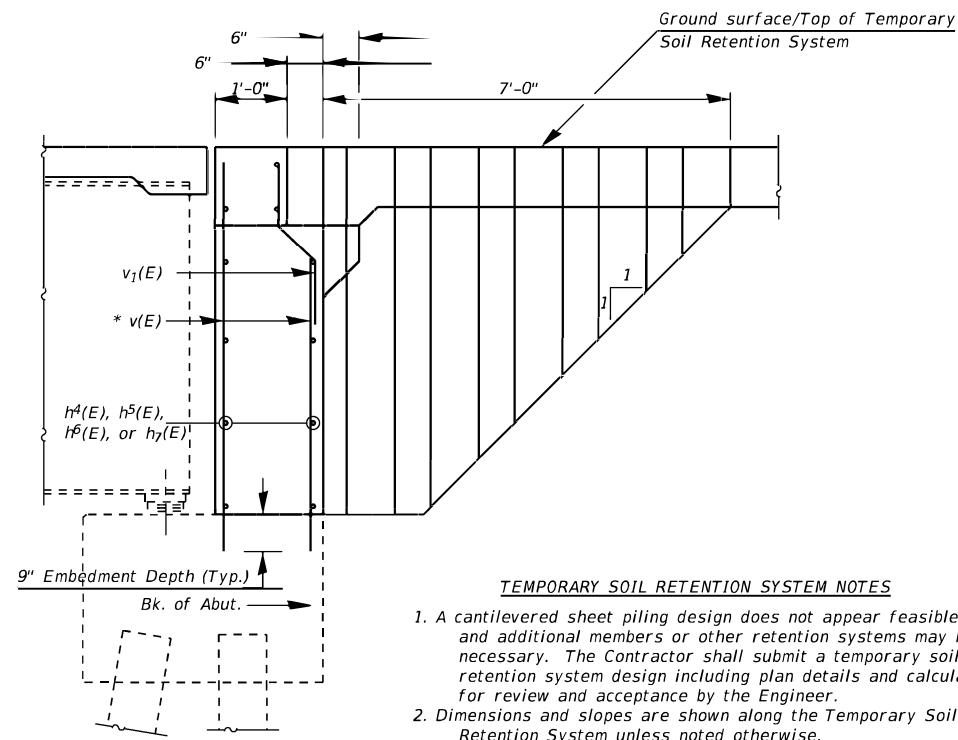
Looking East

ABUTMENT BACKWALL REPLACEMENT

* Drill and epoxy grout v(E) bars 9" into existing abutment according to Article 584 of the Standard Specifications.

BILL OF MATERIAL (TWO BACKWALLS)

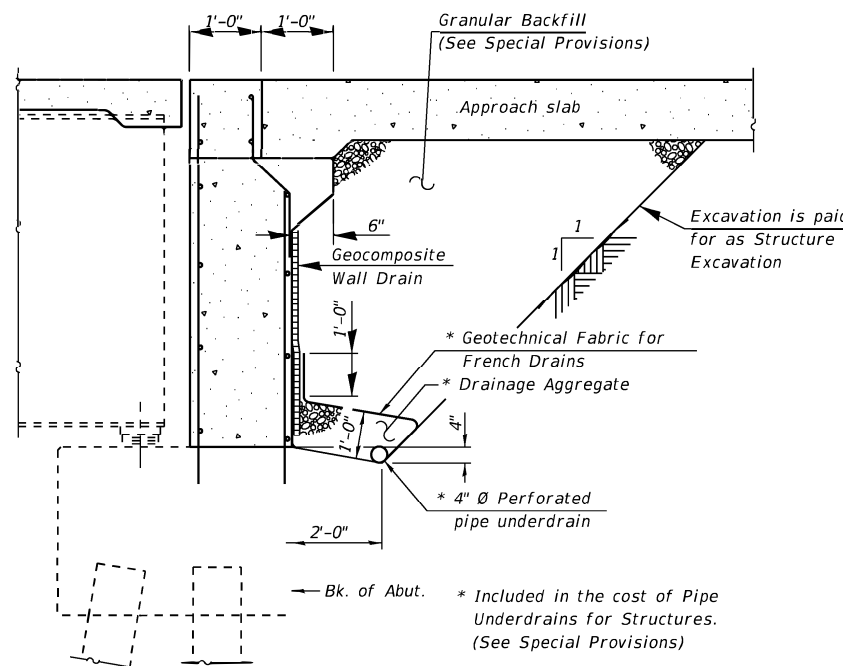
Bar	No.	Size	Length	Shape
h ₄ (E)	8	#5	25'-1"	—
h ₅ (E)	8	#5	32'-11"	—
h ₆ (E)	8	#5	21'-4"	—
h ₇ (E)	8	#5	28'-1"	—
v(E)	208	#4	5'-1"	—
v ₁ (E)	104	#4	3'-3"	—
				18.9
Concrete Structures			Cu. Yd.	18.9
Concrete Removal			Cu. Yd.	17.5
Bar Splicers			Each	16
Reinforcement Bars, Epoxy Coated			Pound	1,830
Structure Excavation			Cu. Yd.	53
Geocomposite Wall Drain			Sq. Yd.	24
Pipe Underdrains for Structures, 4"			Foot	111
Temporary Soil Retention System			Sq. Ft.	42
Granular Backfill for Structures			Cu. Yd.	43



TEMPORARY SOIL RETENTION SYSTEM

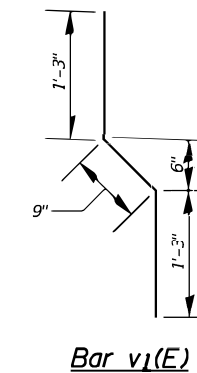
TEMPORARY SOIL RETENTION SYSTEM NOTES

1. A cantilevered sheet piling design does not appear feasible and additional members or other retention systems may be necessary. The Contractor shall submit a temporary soil retention system design including plan details and calculations for review and acceptance by the Engineer.
2. Dimensions and slopes are shown along the Temporary Soil Retention System unless noted otherwise.



ABUTMENT DRAIN DETAIL

(Horizontal dimensions at right angles)
Temporary Sheet Piling not shown for clarity. See Detail this sheet.



Bar v₁(E)

BACKWALL REPLACEMENT AND SHEET PILING DETAILS

2ND LEVEL STRUCTURE

I-64 WB OVER I-57 SB

F.A.I. RTE 64 - D9 BRIDGE REPAIR 2020-5

JEFFERSON COUNTY

STATION 2387+06.95

STRUCTURE NO. 041-0060

REV. 5-29-2020

MODEL: Default FILE NAME: P:\Highwayroom.dwg PROJECT: 78753\CADD\DATA\CAD\PROJECTS\DOT OFFICES\DISTRICT 9\PROJECTS\78753\CADD\DATA\CAD\STRUCTURE.dgn

USER NAME = adamsam	DESIGNED -	REVISED -
	DRAWN -	REVISED -
PLOT SCALE = 30.0000' / in.	CHECKED -	REVISED -
PLOT DATE = 5/8/2020	DATE -	REVISED -

**STATE OF ILLINOIS
DEPARTMENT OF TRANSPORTATION**

**BACKWALL REPLACEMENT AND SHEET PILING DETAILS
SN 041-0060**

SCALE: SHEET 8 OF 13 SHEETS STA. TO STA.

F.A.I. RTE.	SECTION	COUNTY	TOTAL SHEETS	SHEET NO.
64	D9 BRIDGE REPAIR 2020-5	JEFFERSON	21	16
				CONTRACT NO. 78753
		ILLINOIS	FED. AID PROJECT	