

GENERAL NOTES

- THE THICKNESS OF HOT MIX ASPHALT MIXTURE SHOWN ON THE PLANS IS THE NOMINAL THICKNESS. DEVIATIONS FROM THE NOMINAL THICKNESS WILL BE PERMITTED WHEN SUCH DEVIATIONS OCCUR DUE TO IRREGULARITIES IN THE EXISTING SURFACE OR BASE ON WHICH THE HOT MIX ASPHALT MIXTURE IS PLACED.
- FACTORS USED FOR ESTIMATING PLAN QUANTITIES ARE AS FOLLOWS AND SHALL NOT BE USED FOR THE BASIS OF FINAL QUANTITIES:

ALL HOT MIX ASPHALT	2.016 TONS/CU. YD.
ALL AGGREGATE	115 LB/SO YD/IN
BITUMINOUS MATERIALS:	
ON AGGREGATE SURFACE	0.05 LBS/SQ. FT.
AGGREGATE (PRIME COAT)	0.25 LBS/SQ. FT.
- FORMS FOR COMBINATION CONCRETE CURB AND GUTTER, TYPE B-6.12 AND COMBINATION CONCRETE CURB AND GUTTER TYPE B-6.18 SHALL BE OF METAL ONLY, EXCEPT THAT WOOD FORMS MAY BE USED ON SHORT RADIUS CURVES.
- ATTAINMENT OF PROPER CROWN OR SUPER ELEVATION SHALL BE FULLY ACCOMPLISHED WITH THE HOT MIX ASPHALT SURFACE REMOVAL OR HOT MIX ASPHALT BINDER COURSE OR LEVELING BINDER, WHEN SPECIFIED.
- AT ALL LOCATIONS WHERE THE PROPOSED HOT MIX ASPHALT OR CONCRETE PAVEMENT JOINS AN EXISTING HOT MIX ASPHALT OR CONCRETE PAVEMENT, A FULL DEPTH SAWED JOINT SHALL BE CONSTRUCTED. THE COST OF THIS JOINT WILL BE INCLUDED IN THE COST OF THE TYPE OF PAVEMENT BEING CONSTRUCTED.
- THE EXISTING HOT-MIX ASPHALT ON PRIVATE AND COMMERCIAL ENTRANCES SHALL BE BLADED OFF OR MILLED AND DISPOSED OF OUTSIDE OF THE PROJECT LIMITS. THIS COULD BE THE ENTIRE ENTRANCE OR TAPERED AT THE END DEPENDING ON IF THE MAINLINE IS RESURFACED OR MILLED AND RESURFACED. THE COST OF THE BLADING, MILLING, ROLLING AND DISPOSAL IS INCLUDED IN THE CONTRACT UNIT PRICE FOR BITUMINOUS SURFACE COURSE.
- ALL BORROW/WASTE/USE SITES MUST BE APPROVED BY THE DEPARTMENT PRIOR TO REMOVING ANY MATERIAL FROM THE PROJECT OR INITIATING ANY EARTH MOVING ACTIVITIES, INCLUDING TEMPORARY STOCKPILING OUTSIDE THE LIMITS OF CONSTRUCTION.
- THE CONTRACTOR SHALL SEED ALL DISTURBED AREAS WITHIN THE PROJECT LIMITS. SEEDING CLASS 4 OR 2A SHALL BE USED, EXCEPT IN FRONT OF PROPERTIES WHERE THE GRASS WILL BE MOWED, THEN USE SEEDING CLASS 1A. CLASS 2A SHALL BE USED ON FRONT SLOPES AND DITCH BOTTOMS. CLASS 4 SHALL BE USED BEHIND TYPE A GUTTER, ON ALL BACK SLOPES AND AREAS BEHIND THE BACK SLOPE, AND BEYOND THE TOE OF THE FRONT SLOPE ON FILL SECTIONS WITHOUT DITCHES. THIS WORK SHALL BE CONSIDERED INCIDENTAL TO THE TOTAL BID PRICE OF THE CONTRACT.
- FERTILIZER SHALL BE APPLIED TO ALL DISTURBED AREAS AND INCORPORATED INTO THE SEEDBED PRIOR TO SEEDING AND PLACEMENT OF SOD AT THE RATE SPECIFIED IN SECTIONS 250 AND 252 OF THE CURRENT EDITION OF THE STANDARD SPECIFICATIONS. THE COST OF FERTILIZER SHALL BE CONSIDERED INCIDENTAL TO THE TOTAL BID PRICE OF THE CONTRACT.
- MULCH METHOD II SHALL BE APPLIED OVER ALL SEEDED AREAS. THIS WORK SHALL BE CONSIDERED INCIDENTAL TO THE TOTAL BID PRICE OF THE CONTRACT.

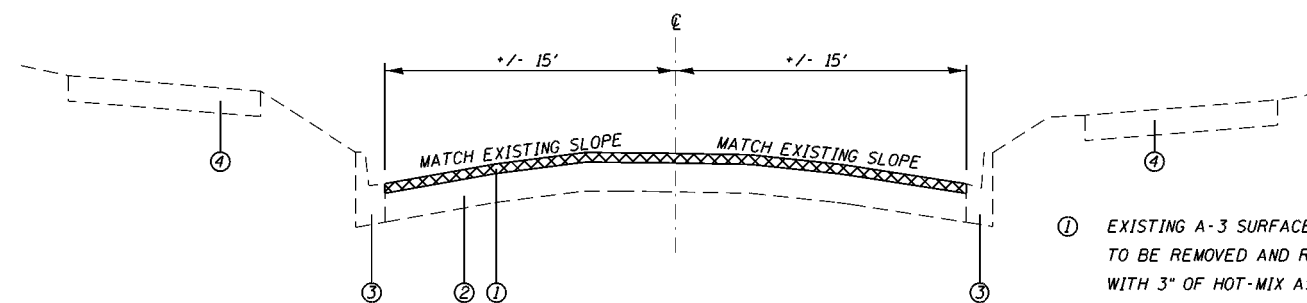
- MILLING MACHINES ON THIS PROJECT SHALL BE CAPABLE OF REMOVING A LAYER OF BITUMINOUS A MINIMUM OF 6" WIDE AND 1-1/2 INCHES IN DEPTH IN A SINGLE PASS.
- THE FOLLOWING MIXTURE REQUIREMENTS ARE APPLICABLE FOR THIS PROJECT:

LOCATIONS	HOT-MIX ASPHALT SURFACE COURSE	HOT-MIX ASPHALT LEVELING BINDER
MIXTURE USE(S):	HOT-MIX ASPHALT SURFACE COURSE, MIX D, N70	HOT-MIX ASPHALT LEVELING BINDER, N70 FINE GRADED
AG/PG:	PG64-22	PG64-22
ABR% (MAX):	SEE SPECIAL PROVISIONS	SEE SPECIAL PROVISIONS
DESIGN AIR VOIDS:	4.0%, 7- GYRATION DESIGN	4.0%, 70 GYRATION DESIGN
MIXTURE COMPOSITION (GRADATION MIXTURE)	IL-9.5MM	IL-9.5MM FINE GRADED
FRICTION AGGREGATE:	D SURFACE	NONE
MIXTURE WEIGHT:	112 LBS/SO YD/IN	112 LBS/SO YD/IN
QUALITY MANAGEMENT PROGRAM:	OCCA	OCCA

- THE CONTRACTOR SHALL PLACE TEMPORARY HOT-MIX ASPHALT TAPERS ALONG ALL SIDES OF THE UTILITY STRUCTURES PROTRUDING ABOVE THE MILLED SURFACE. THE TEMPORARY TAPERS SHALL EXTEND 2' OUTSIDE OF THE CASTINGS, EXCEPT FOR THE APPROACH SIDED TO TRAFFIC SHALL HAVE A 4' TAPER LENGTH, HOT-MIX ASPHALT MEETING THE APPROVAL OF THE ENGINEER SHALL BE USED, NO COLD MILLINGS WILL BE ALLOWED. THE COST OF THE MATERIAL, PLACEMENT, MAINTENANCE, REMOVAL AND DISPOSAL OF SAID WORK WILL BE INCLUDED IN THE PAY ITEM FOR HOT-MIX ASPHALT SURFACE REMOVAL.
- THE AREA TO BE PRIMED SHALL BE LIMITED TO THAT WHICH CAN BE COVERED WITH HMA ON THE NEXT DAYS PRODUCTIVITY, BUT NO MORE THAN FIVE DAYS IN ADVANCE OF THE PLACEMENT OF THE HMA, UNLESS APPROVED BY THE ENGINEER.
- ALL DISABLED RAMPS MUST HAVE BARRIER CURBS ON THE SIDES OF THE RAMPS AS SHOWN ON HIGHWAY STANDARD 424001. THE BARRIER CURBS SHALL BE CONSTRUCTED ACCORDING TO THE DETAIL OF SIDE CURB ON HIGHWAY STANDARD 424001.
- THE CONTRACTOR SHALL BE RESPONSIBLE FOR LOCATING AND PROTECTING UTILITY PROPERTY DURING CONSTRUCTION OPERATIONS AS OUTLINED IN ARTICLE 107.39 OF THE STANDARD SPECIFICATIONS. A MINIMUM OF 48 HOURS ADVANCE NOTICE IS REQUIRED FOR NON-EMERGENCY WORK. THE JULIE NUMBER IS 800-892-0123.

UTILITY	CONTACT	PHONE
CLEARWAVE COMMUNICATIONS	ROTH CLAYTON	N/A
NEW WAVE COMMUNICATIONS	ROBERT EVRLEY	217-823-4039
FRONTIER COMMUNICATIONS	KALIN HINSHAW	815-895-1515
AMEREN-IP (SOUTH)	NATHAN HILL	618-301-5327
CITY OF PINCKNEYVILLE	MIKE MILLIKIN	618-357-5214

- THE APPLICABLE PORTIONS OF ARTICLE 105.07 OF THE STANDARD SPECIFICATIONS SHALL APPLY EXCEPT FOR THE FOLLOWING: THE CONTRACTOR SHALL BE RESPONSIBLE TO LOCATE ALL THE VERTICAL DEPTHS OF THE UNDERGROUND UTILITIES WHICH MAY INTERFERE WITH CONSTRUCTION OPERATIONS. THIS WORK WILL NOT BE MEASURED AND PAID FOR SEPARATELY, BUT SHALL BE CONSIDERED AS INCLUDED IN THE UNIT BID PRICE FOR THE ITEMS OF CONSTRUCTION INVOLVED.
- THE CONTRACTOR SHALL REMOVE AND RECONSTRUCT THE EXISTING BLOCK RETAINING WALL AT THE NORTHWEST QUADRANT OF SOUTH WALNUT ST. & WEST SOUTH ST. AS A RESULT OF CURB RAMP IMPROVEMENTS. THE CONTRACTOR SHALL UTILIZE EXISTING MATERIAL, AND SUPPLEMENT SIMILAR MATERIAL AS NECESSARY PER OWNERS APPROVAL. THE COST OF SAID WORK WILL BE INCLUDED IN THE PAY ITEM FOR SIDEWALK REMOVAL & PORTLAND CEMENT CONCRETE SIDEWALK, 6 INCH.
- DURING THE CURB & GUTTER REMOVAL, EXISTING INLET STRUCTURES AND FRAME & GRATES SHALL BE PRESERVED IN ORDER TO BE RE-SET IN CONJUNCTION WITH THE NEW COMBINATION CURB AND GUTTER. THIS WORK SHALL BE CONSIDERED INCIDENTAL TO COMBINATION CURB AND GUTTER REMOVAL AS WELL AS COMBINATION CURB AND GUTTER TYPE B-6.12.



TYPICAL SECTION
SOUTH WALNUT STREET
W. KASKASKIA ST. TO W. RANDOLPH ST.

- EXISTING A-3 SURFACE, APPROX. 3" TO BE REMOVED AND REPLACED WITH 3" OF HOT-MIX ASPHALT;
1-1/2" HMA SURFACE COURSE IL-9.5 MIX "D" N70
1-1/2" HMA BINDER COURSE IL-9.5 N70
- EXISTING CRUSHED STONE BASE
- EXISTING CURB & GUTTER
- EXISTING SIDEWALK

CODE NO.	ITEM	UNIT	TOTAL QUANTITY	CONSTR. CODE
				ROADWAY 0005
31101000	SUBBASE GRANULAR MATERIAL, TYPE B	TON	73	73
40600275	BITUMINOUS MATERIALS (PRIME COAT)	POUND	5741	5741
40600290	BITUMINOUS MATERIALS (TACK COAT)	POUND	1148	1148
40600990	TEMPORARY RAMP	SQ YD	170	170
40602985	HOT-MIX ASPHALT BINDER COURSE, IL-9.5, N70	TON	148	148
40604062	HOT-MIX ASPHALT SURFACE COURSE, IL-9.5, MIX "D", N70	TON	296	296
42400300	PORTLAND CEMENT CONCRETE SIDEWALK 6 INCH	SQ FT	1564	1564
42400800	DETECTABLE WARNINGS	SQ FT	121	121
44000161	HOT-MIX ASPHALT SURFACE REMOVAL, 3"	SQ YD	2641	2641
44000500	COMBINATION CURB AND GUTTER REMOVAL	FOOT	219	219
44000600	SIDEWALK REMOVAL	SQ FT	1446	1446
60300105	FRAMES AND GRATES TO BE ADJUSTED	EACH	7	7
60300305	FRAMES AND LIDS TO BE ADJUSTED	EACH	2	2
60603800	COMBINATION CONCRETE CURB AND GUTTER, TYPE B-6.12	FOOT	219	219
67100100	MOBILIZATION	L SUM	1	1
70102620	TRAFFIC CONTROL AND PROTECTION, STANDARD 701501	L SUM	1	1
70102640	TRAFFIC CONTROL AND PROTECTION, STANDARD 701801	L SUM	1	1
Δ 78001130	PAINT PAVEMENT MARKING - LINE 6"	FOOT	350	350
Δ 78001180	PAINT PAVEMENT MARKING - LINE 24"	FOOT	46	46

Δ SPECIALTY ITEMS

PAVEMENT SCHEDULE

LOCATION	31101000	40602985	40603340	40600290	40600290	44000161	40600990
	SUBBASE GRANULAR MATERIAL TYPE B TON	HOT-MIX ASPHALT BINDER COURSE, IL-9.5, N70 TON	HOT-MIX ASPHALT SURFACE COURSE, IL-9.5 MIX "D", N70 TON	BITUMINOUS MATERIALS (PRIME COAT) LBS	BITUMINOUS MATERIALS (TACK COAT) LBS	HOT-MIX ASPHALT SURFACE REMOVAL, 3" SQ YD	TEMPORARY RAMP SQ YD
S. WALNUT ST.							
19+73.16 to 23+13.16		65.6	131.1	2635.0	526.9	1171.1	
0+36.77 to 3+18.10		54.3	108.5	2180.3	436.1	969.0	
19+73.16							34.4
0+86.66 LT to 2+10.30 LT	14.2						
3+18.10							34.4
21+59.25 LT	0.5						
W. KASKASKIA ST.							
9+70.15 to 9+84.29		2.4	4.7	109.6	21.9	42.4	
10+14.97 to 10+32.45		2.7	5.3	135.5	27.1	47.6	
9+70.15							20.3
10+32.45							23.1
NW Quadrant	5.8						
SW Quadrant	7.6						
NE Quadrant	6.0						
SE Quadrant	6.6						
W. SOUTH ST.							
9+59.76 to 10+47.56		23	46.0	680.5	136.1	410.9	
9+59.76							28.7
10+47.56							28.7
NW Quadrant	7.0						
SW Quadrant	7.1						
NE Quadrant	12.9						
SE Quadrant	5.3						
TOTALS	73	148	296	5741	1148	2641	170

SIDEWALK AND CURB RAMP SCHEDULE

LOCATION	42400300	42400800	60603800
	PORTLAND CEMENT CONCRETE SIDEWALK 6 INCH SQ FT	DETECTABLE WARNINGS SQ FT	COMBINATION CURB AND GUTTER, TYPE B 6.12 FOOT
W. KASKASKIA ST.			
NW QUADRANT	239.5	10	19.1
NE QUADRANT	69.4	10	24.7
SW QUADRANT	159.8	20	24.9
SE QUADRANT	150.1	20	23.9
W. SOUTH ST.			
NW QUADRANT	416.6	26	28.2
NE QUADRANT	259.5	15	46.2
SW QUADRANT	193.6	10	27.0
SE QUADRANT	75.4	10	18.6
WALNUT ST.			
21+59.25 LT			6.0
TOTALS	1564	121	219

STRUCTURE ADJUSTMENT

LOCATION	60300104	60300305
	FRAME & GRATES TO BE ADJUSTED EACH	FRAME & LIDS TO BE ADJUSTED EACH
W. KASKASKIA ST.		
NW QUADRANT	1.0	
NE QUADRANT	1.0	1.0
SW QUADRANT	1.0	
SE QUADRANT	1.0	
W. SOUTH ST.		
NW QUADRANT	1.0	1.0
SW QUADRANT	1.0	
21+59.25 LT	1.0	
TOTALS	7	2

REMOVAL ITEMS SCHEDULE

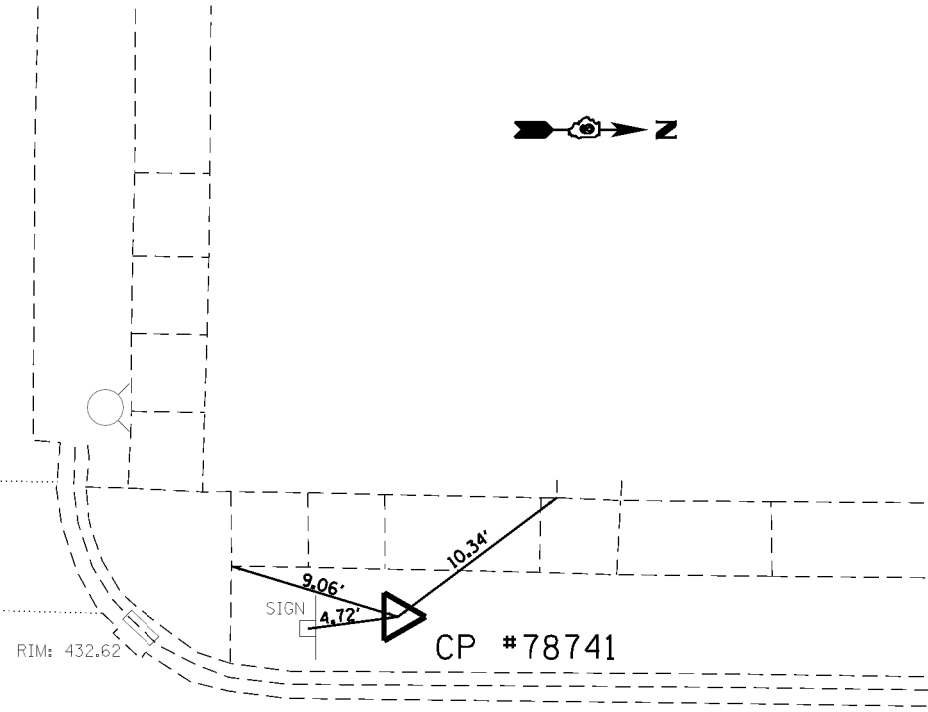
LOCATION	44000500	44000600
	COMBINATION CURB AND GUTTER REMOVAL FOOT	SIDE WALK REMOVAL SQ FT
W. KASKASKIA ST.		
NW QUADRANT	18.9	237.4
NE QUADRANT	28.0	101.5
SW QUADRANT	25.0	107.6
SE QUADRANT	24.0	120.0
W. SOUTH ST.		
NW QUADRANT	25.0	395.5
NE QUADRANT	45.5	214.2
SW QUADRANT	27.0	195.3
SE QUADRANT	19.4	74.4
WALNUT ST.		
21+59.25 LT	6.0	
TOTALS	219	1446

PAVEMENT MARKING SCHEDULE

LOCATION	78001130	78001180
	PAINT PAVEMENT MARKING - LINE 6" FT	PAINT PAVEMENT MARKING - 24" FT
S. WALNUT ST.		
at W. Kaskaskia St.	61.4	
at W. South St.	80.2	
W. KASKASKIA ST.		
at S. Walnut St. East	44.2	
at S. Walnut St. West	46.2	
West Approach		9.2
East Approach		10.3
W. SOUTH ST.		
at S. Walnut St. East	60.0	
at S. Walnut St. West	58.0	
West Approach		13.0
East Approach		13.0
TOTALS	350	46

WEST KASKASKIA STREET

O&C



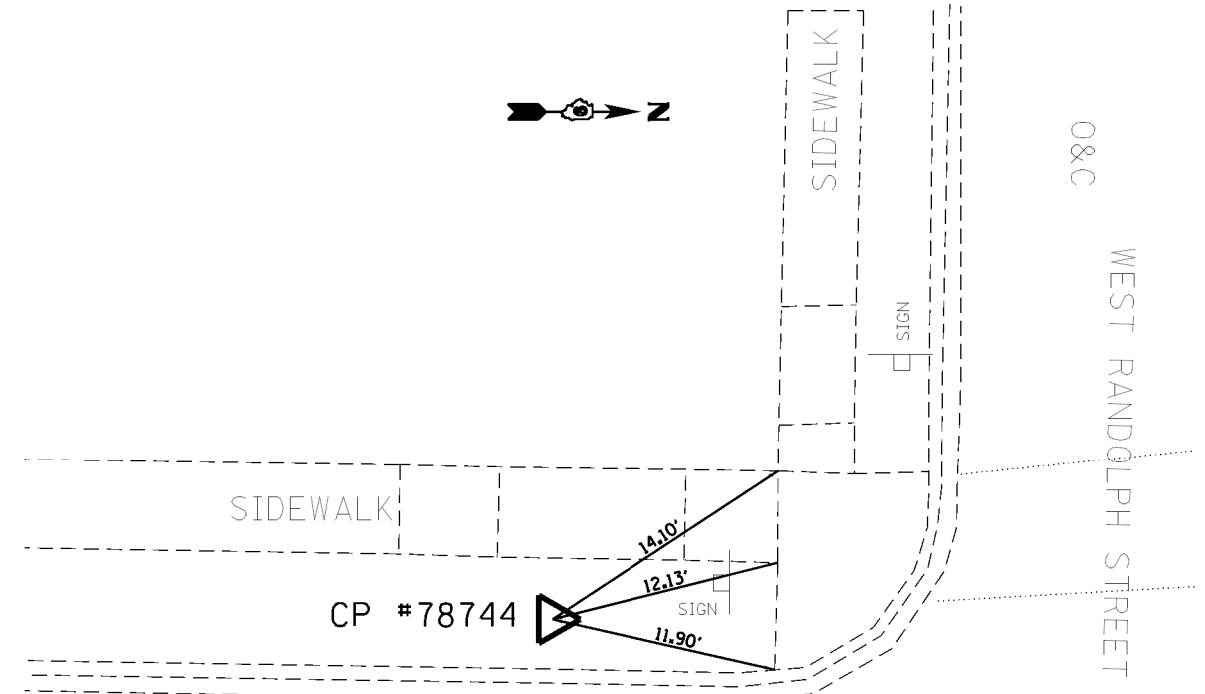
SOUTH WALNUT STREET

CONTROL POINT #78741

STA. 20+29.50, 19.5' LT
 HMG CONTROL CAP
 NORTHING 514,089.4280
 EASTING 2,522,138.0510
 ELEVATION 433.693

O&C

WEST RANDOLPH STREET

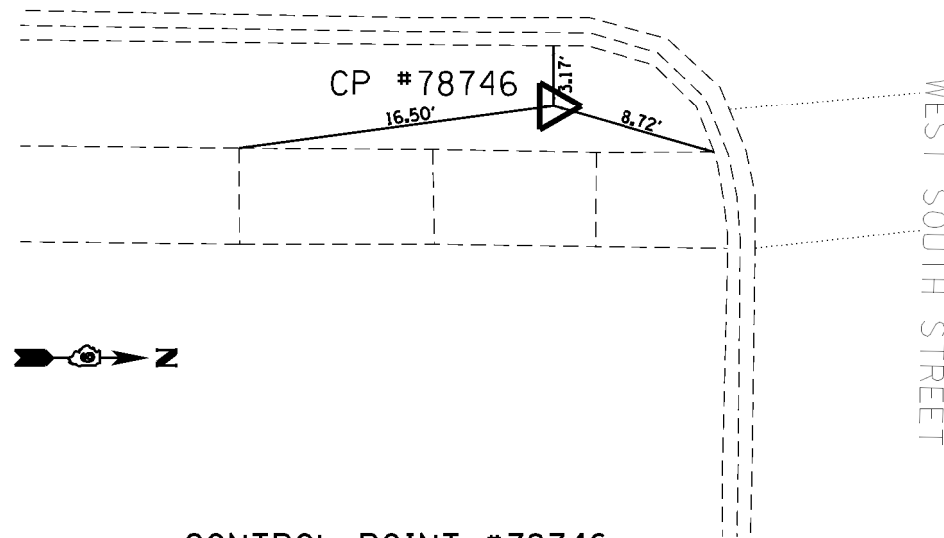


SOUTH WALNUT STREET

CONTROL POINT #78744

STA. 23+38.36, 25.7' LT
 NAIL
 NORTHING 514,713.0080
 EASTING 2,522,138.5170
 ELEVATION 437.182

SOUTH WALNUT STREET



CONTROL POINT #78746

STA. 23+14.58, 19.6' RT
 NAIL
 NORTHING 514,374.0680
 EASTING 2,522,180.2500
 ELEVATION 433.974

NOTE: ALL COORDINATES SHOWN HEREIN ARE BASED ON THE NORTH AMERICAN DATUM OF 1983 ILLINOIS STATE PLANE WEST COORDINATE SYSTEM AND THE NORTH AMERICAN VERTICAL DATUM OF 1988

FILE NAME = D9XXXXX-shr-Coordinate Control.dgn

HMG ENGINEERS, INC.
 9360 HOLY CROSS LANE
 BREESE, ILLINOIS 62230
 (618) 526-9611

USER NAME = mobrien
 PLOT SCALE = 40,0000 1/1 in.
 PLOT DATE = 3/9/2020

DESIGNED - M. O'BRIEN
 DRAWN - M. O'BRIEN
 CHECKED -
 DATE -

REVISED -
 REVISED -
 REVISED -
 REVISED -

STATE OF ILLINOIS
 DEPARTMENT OF TRANSPORTATION

CONTROL POINTS &
 BENCHMARKS

SCALE: N.T.S. SHEET OF SHEETS STA. TO STA.

F.A.U. RTE.	SECTION	COUNTY	TOTAL SHEETS	SHEET NO.
9956	19-00033-00-R5	PERRY	16	5
CONTRACT NO. 99647			ILLINOIS FED. AID PROJECT 45EF(501)	



PAINT PAVEMENT MARKING - LINE 24" STOPBAR, WEST KASKASKIA ST. 9.2 L.F.

PAINT PAVEMENT MARKING - LINE 6" (WHITE) CROSS WALK, WEST KASKASKIA ST. 46.2 L.F.

POT Sta. 19+00.00

BEGIN CONSTRUCTION STA. 19+73.16

PAINT PAVEMENT MARKING - LINE 6" (WHITE) CROSS WALK, S. KASKASKIA ST. 61.4 L.F.

PAINT PAVEMENT MARKING - LINE 6" (WHITE) CROSS WALK, WEST KASKASKIA ST. 44.2 L.F.

PAINT PAVEMENT MARKING - LINE 24" STOPBAR, WEST KASKASKIA ST. 10.3 L.F.



CHAIN: EX. WALNUT1

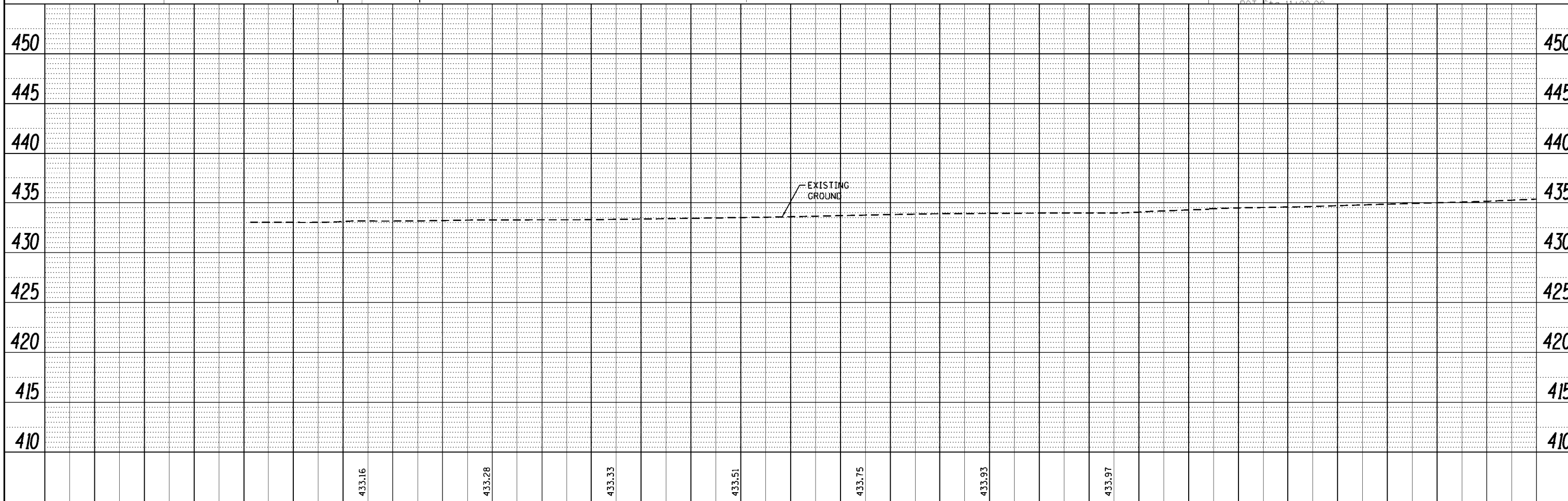
SOUTH WALNUT ST. STA. 0+00.00
WEST SOUTH ST. STA. 9+96.10
N. 2,522,153.9870
E. 514,398.1649

SOUTH WALNUT ST. STA. 20+00.00
WEST KASKASKIA ST. STA. 10+00.00
N. 2,522,157.2487
E. 514,059.7928

SOUTH WALNUT ST. STA. 23+38.36
WEST SOUTH ST. STA. 10+02.99
N. 2,522,160.7182
E. 514,394.6026

PLAN	SUBMITTED	DATE
	PLOTTED	
	ALIGNED	
	CHECKED	
	NO. _____	
	NOTE BOOK	
	CARD FILE NAME	

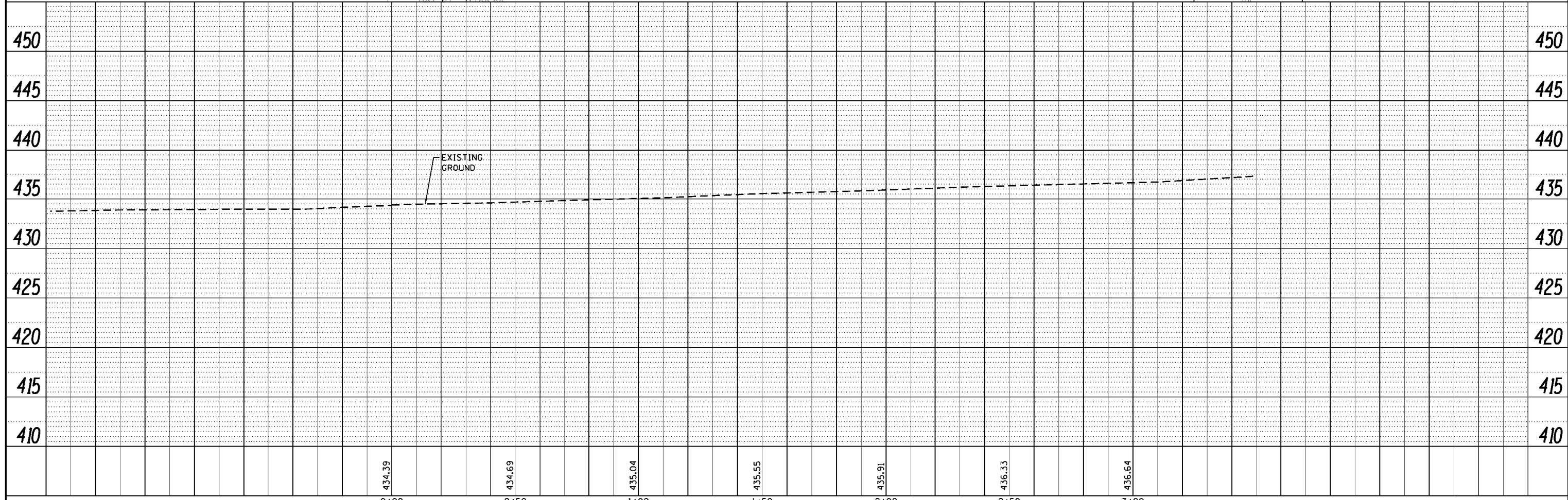
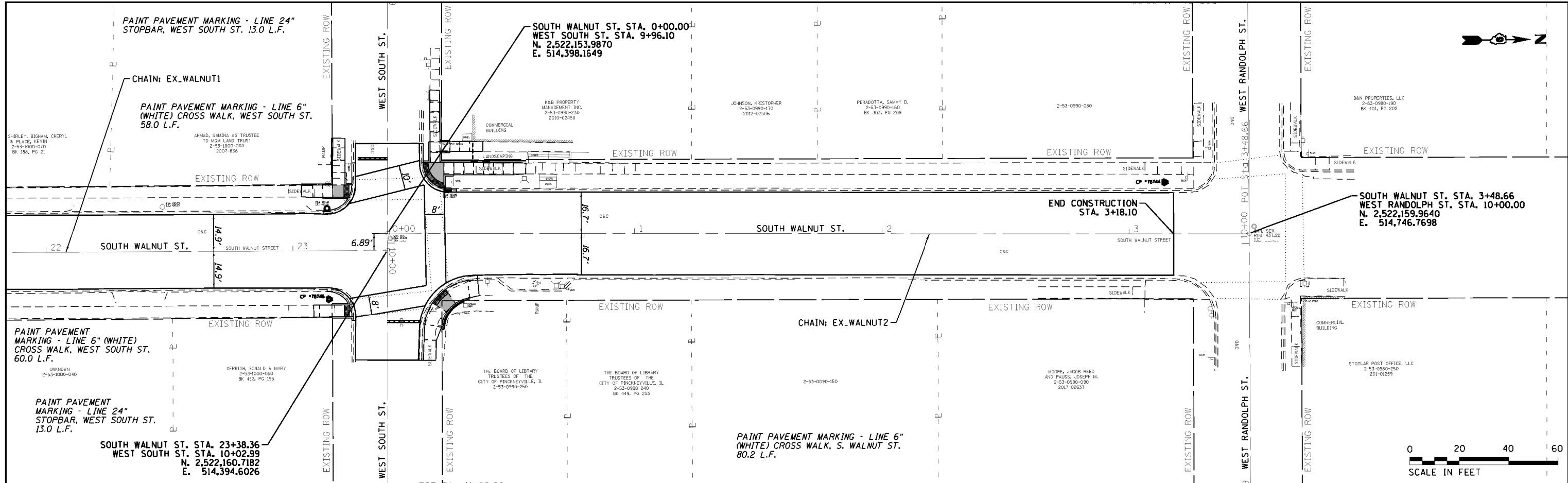
PROFILE	SUBMITTED	DATE
	PLOTTED	
	GRADES CHECKED	
	STRUCTURE NOTATIONS CHKD	
	NO. _____	
	NOTE BOOK	
	NO. _____	



FILE NAME = D:\XXXXX-shr-P&P.S.WALNUT-01.dgn	DESIGNED - M. O'BRIEN	REVISOR -	STATE OF ILLINOIS DEPARTMENT OF TRANSPORTATION	SOUTH WALNUT STREET PLAN AND PROFILE	F.A.U. RTE. 9956	SECTION 19-00033-00-RS	COUNTY PERRY	TOTAL SHEETS 16	SHEET NO. 6	
HMG ENGINEERS, INC. 9360 HOLY CROSS LANE BREESE, ILLINOIS 62230 (618) 526-9611	USER NAME = mobrien	DRAWN - M. O'BRIEN			SCALE: 1" = 20'	SHEET OF SHEETS	STA. TO STA.	CONTRACT NO. 99647		
	PLOT SCALE = 40.0000' / in.	CHECKED - T.J. KEYS						ILLINOIS FED. AID PROJECT 45E1501		
	PLOT DATE = 3/9/2020	DATE - 1-15-2020								

PLAN	SUBMITTED	DATE
	PLOTTED	
	ALIGNED	
	CHECKED	
	NO.	
	CARD FILE NAME	



PROFILE	SUBMITTED	DATE
	PLOTTED	
	GRADES CHECKED	
	STRUCTURE NOTATIONS CHKD	
	NO.	

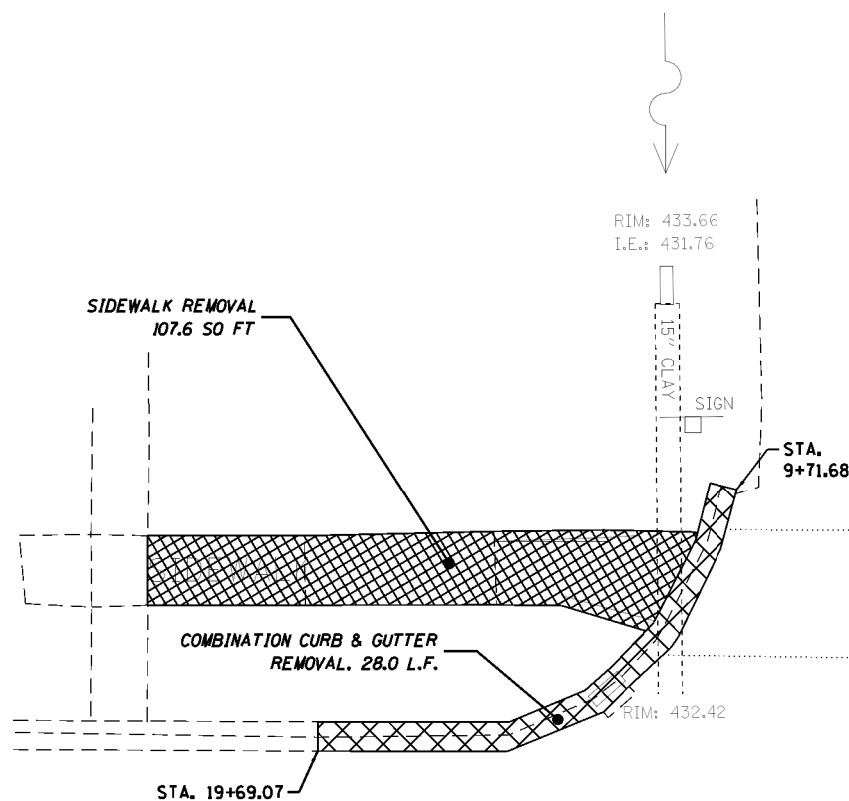


FILE NAME = D9XXXXX-shr-P&P-S.WALNUT-02.dgn	DESIGNED - M. O'BRIEN	REVISED -	STATE OF ILLINOIS DEPARTMENT OF TRANSPORTATION	SOUTH WALNUT STREET PLAN AND PROFILE	F.A.U. RTE. 9956	SECTION 19-00033-00-RS	COUNTY PERRY	TOTAL SHEETS 16	SHEET NO. 7	
HMG ENGINEERS, INC. 9360 HOLY CROSS LANE BREESE, ILLINOIS 62230 (618) 526-9611	DRAWN - M. O'BRIEN	REVISED -			SCALE: 1" = 20'	SHEET OF SHEETS	STA. TO STA.	CONTRACT NO. 99647		
USER NAME = mobri-en	CHECKED - T.J. KEYS	REVISED -			ILLINOIS FED. AID PROJECT 45E1501					
PLOT SCALE = 40.0000 / in.	DATE - 1-15-2020	REVISED -								

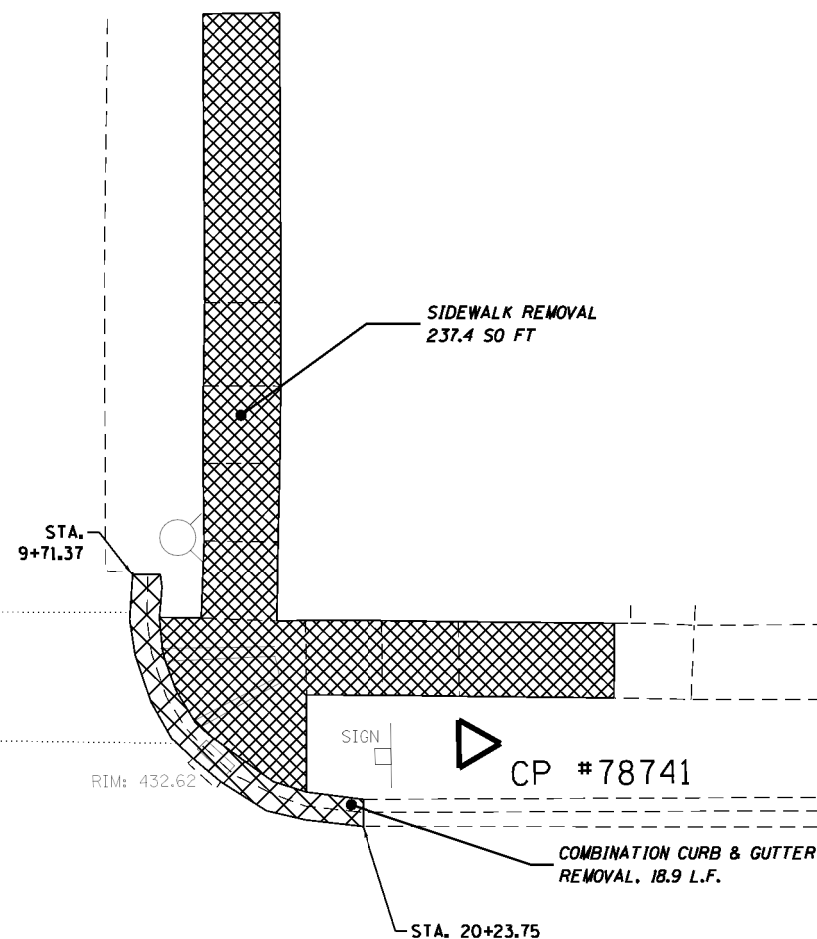


LEGEND

-  SIDEWALK REMOVAL
-  CURB & GUTTER REMOVAL



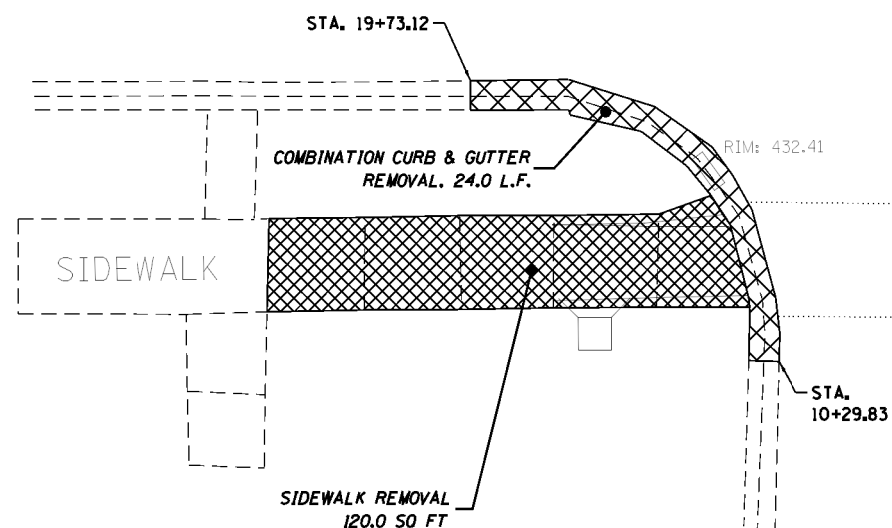
WEST KASKASKIA STREET



20+00

SOUTH WALNUT STREET

10+00
SAN. SEW.
RIM: 433.08

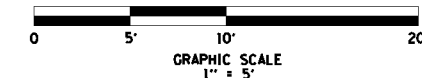


RIM: 732.47

STA. 10+32.21

STATE OF ILLINOIS
DEPARTMENT OF TRANSPORTATION

SOUTH WALNUT ST. & WEST KASKASKIA ST.
REMOVAL AREAS



FILE NAME = D9XXXXX-sht-Removal-01.dgn
HMG ENGINEERS, INC.
9360 HOLY CROSS LANE
BREESE, ILLINOIS 62230
(618) 526-9611

USER NAME = mobrien
PLOT SCALE = 10,0000 1/1 in.
PLOT DATE = 3/9/2020


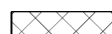
DESIGNED - M. O'BRIEN
DRAWN - M. O'BRIEN
CHECKED - T.J. KEYS
DATE - 1-15-2020

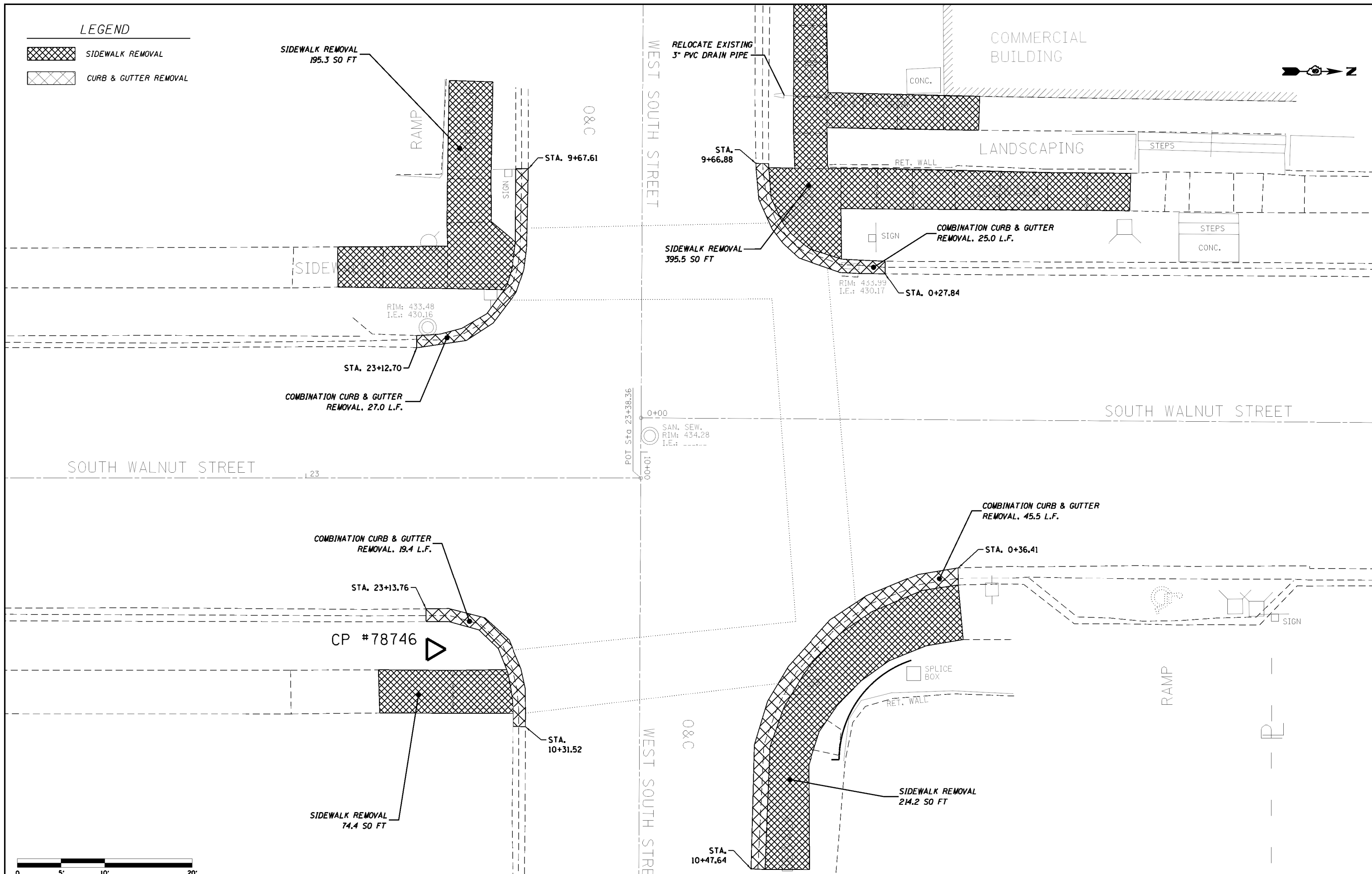
REVISED -
REVISED -
REVISED -
REVISED -

SCALE: 1" = 5' SHEET OF SHEETS STA. TO STA.

F.A.U. RTE.	SECTION	COUNTY	TOTAL SHEETS	SHEET NO.
9956	19-00033-00-RS	PERRY	16	8
CONTRACT NO. 99647				
ILLINOIS FED. AID PROJECT 4SEF(501)				

LEGEND

-  SIDEWALK REMOVAL
-  CURB & GUTTER REMOVAL



FILE NAME = D:\XXXXX-sh	GRAPHIC SCALE 1" = 5'
HMG ENGINEERS, INC. 9360 HOLY CROSS LANE BREESE, ILLINOIS 62230 (618) 526-9611	USER NAME = mobrien PLOT SCALE = 10,0000 1/1 in. PLOT DATE = 3/9/2020

DESIGNED - M. O'BRIEN	REVISED -
DRAWN - M. O'BRIEN	REVISED -
CHECKED - T.J. KEYS	REVISED -
DATE - 1-15-2020	REVISED -

**STATE OF ILLINOIS
DEPARTMENT OF TRANSPORTATION**

**SOUTH WALNUT ST. & WEST SOUTH ST.
REMOVAL AREAS**

SCALE: 1" = 5' SHEET 2 OF 2 SHEETS STA. TO STA.

F.A.U. RTE.	SECTION	COUNTY	TOTAL SHEETS	SHEET NO.
9956	19-00033-00-R5	PERRY	16	9
CONTRACT NO. 99647				
ILLINOIS FED. AID PROJECT				

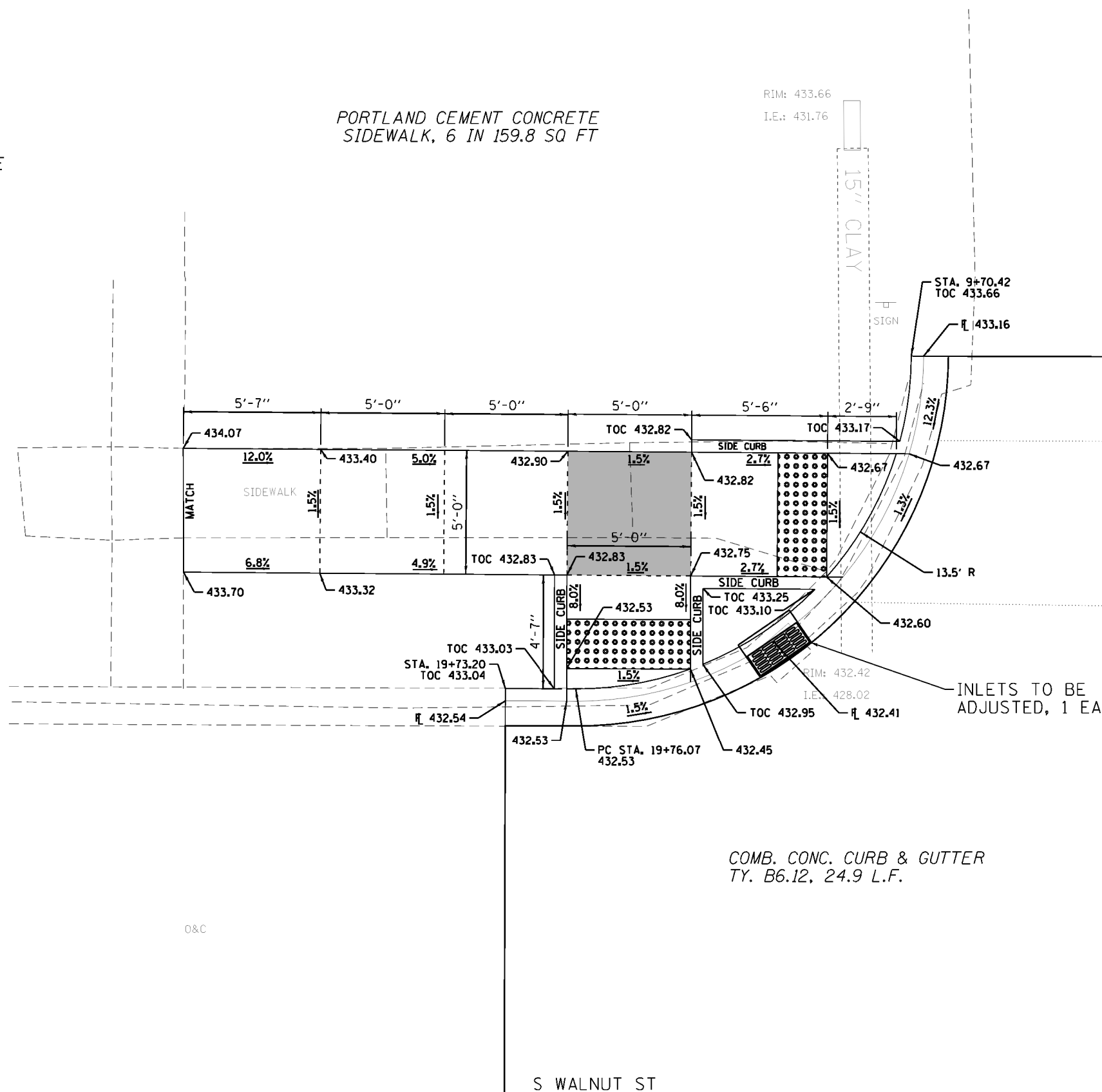


NOTE: EARTH EXCAVATION REQUIRED FOR THE CONSTRUCTION OF SIDEWALKS AND RAMPS SHALL BE INCLUDED IN THE COST OF THE ITEM BEING CONSTRUCTED.

CURB RAMP DESIGNS BASED ON HIGHWAY STD 424001

PORTLAND CEMENT CONCRETE SIDEWALK, 6 IN 159.8 SQ FT

RIM: 433.66
I.E.: 431.76



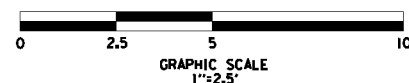
LEGEND



DETECTABLE WARNINGS



LANDING AREA (2% MAX)



COMB. CONC. CURB & GUTTER
TY. B6.12, 24.9 L.F.

W KASKASKIA ST

S WALNUT ST

20+00

10+00

FILE NAME = D9XXXXX-sht-ramp detail-01.dgn	DESIGNED - M. O'BRIEN	REVISED -	STATE OF ILLINOIS DEPARTMENT OF TRANSPORTATION	SOUTH WALNUT & WEST KASKASKIA SOUTHWEST QUADRANT		F.A.U. RTE. 9956	SECTION 19-00033-00-R5	COUNTY PERRY	TOTAL SHEETS 16	SHEET NO. 10	
HMG ENGINEERS, INC. 9360 HOLY CROSS LANE BREESE, ILLINOIS 62230 (618) 526-9611	USER NAME = mobrien	DRAWN - M. O'BRIEN		REVISED -	SCALE: 1" = 2.5'	SHEET OF SHEETS	STA. TO STA.	CONTRACT NO. 99647			
	PLOT SCALE = 5.0000' / 1in.	CHECKED - T.J. KEYS		REVISED -				ILLINOIS AID PROJECT 45F1501			
	PLOT DATE = 3/9/2020	DATE - 1-15-2020		REVISED -							



NOTE: EARTH EXCAVATION REQUIRED FOR THE CONSTRUCTION OF SIDEWALKS AND RAMPS SHALL BE INCLUDED IN THE COST OF THE ITEM BEING CONSTRUCTED.

CURB RAMP DESIGNS BASED ON HIGHWAY STD 424001

S WALNUT ST

20+00

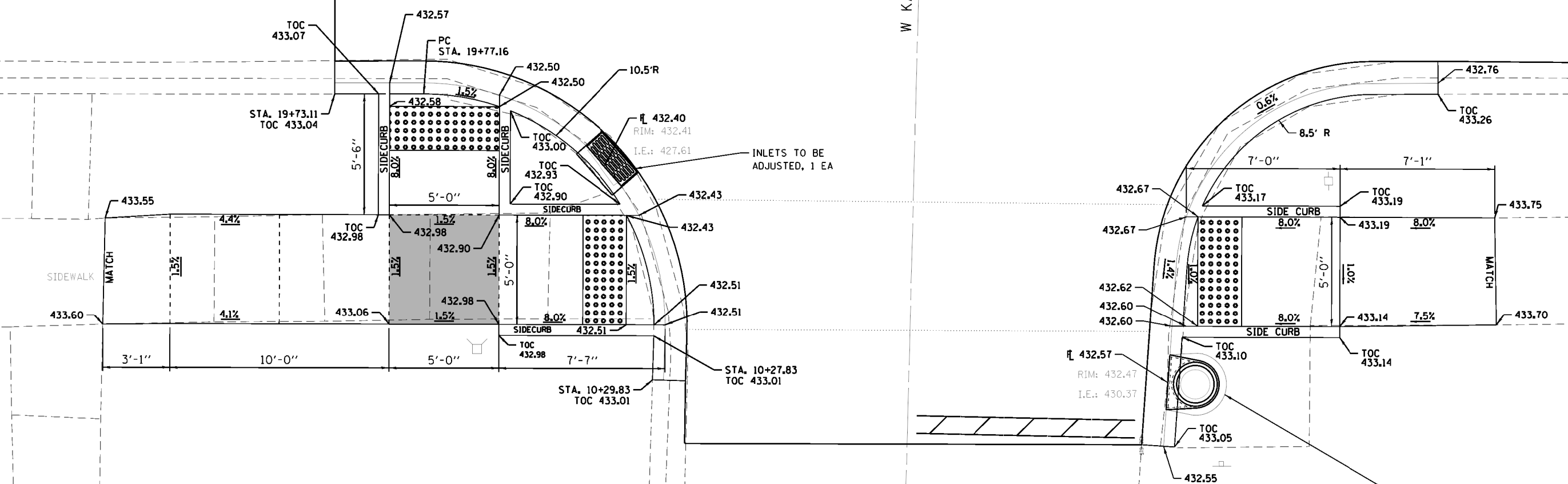
10+00

SAN. SEW.
RIM: 433.08
I.E.: -----

W KASKASKIA ST

COMB. CONC. CURB & GUTTER
TY. B6.12, 24.7 L.F.

COMB. CONC. CURB & GUTTER
TY. B6.12, 23.9 L.F.



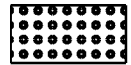

INLETS TO BE ADJUSTED, 1 EA

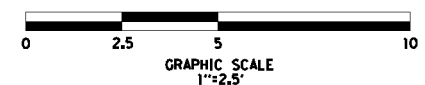
INLETS TO BE ADJUSTED, 1 EA

PORTLAND CEMENT CONCRETE
SIDEWALK, 6 IN 150.1 SQ FT

PORTLAND CEMENT CONCRETE
SIDEWALK, 6 IN 69.4 SQ FT

LEGEND

-  DETECTABLE WARNINGS
-  LANDING AREA (2% MAX)



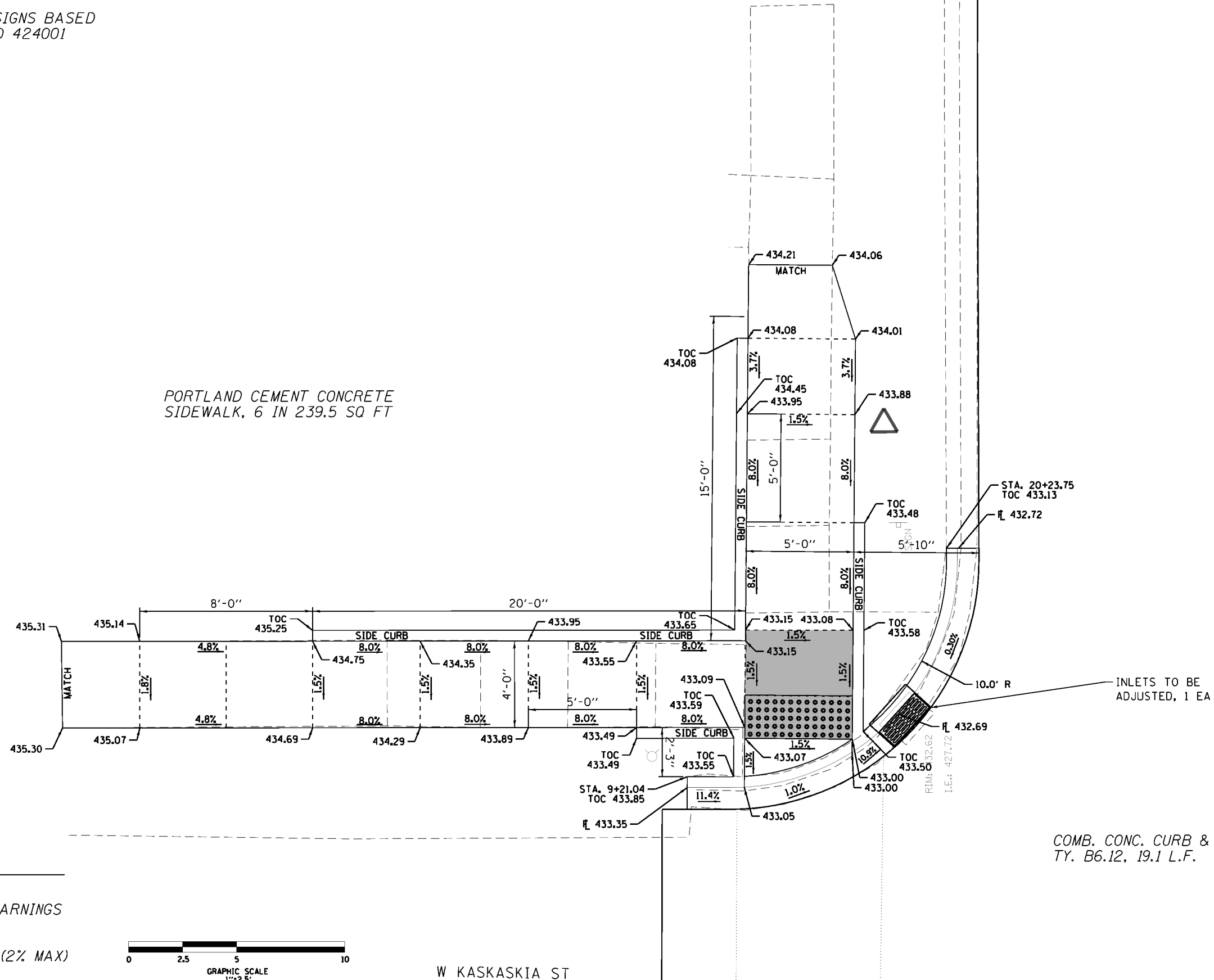
FILE NAME = D9XXXXX-sht-ramp detail-02.dgn HMG ENGINEERS, INC. 9360 HOLY CROSS LANE BREESE, ILLINOIS 62230 (618) 526-9611	USER NAME = mobrien PLOT SCALE = 5.0000' / 1in. PLOT DATE = 3/9/2020	DESIGNED - M. O'BRIEN DRAWN - M. O'BRIEN CHECKED - T.J. KEYS DATE - 1-15-2020	REVISED - REVISED - REVISED - REVISED -	STATE OF ILLINOIS DEPARTMENT OF TRANSPORTATION	SOUTH WALNUT & WEST KASKASKIA SOUTHEAST & NORTHEAST QUADRANT	F.A.U. RTE. 9956 SECTION 19-00033-00-R5 COUNTY PERRY TOTAL SHEETS 16 SHEET NO. 11 CONTRACT NO. 99647	ILLINOIS FED. AID PROJECT 45EF1501
	SCALE: 1" = 2.5' SHEET OF SHEETS STA. TO STA.						

NOTE: EARTH EXCAVATION REQUIRED FOR THE CONSTRUCTION OF SIDEWALKS AND RAMPS SHALL BE INCLUDED IN THE COST OF THE ITEM BEING CONSTRUCTED.

CURB RAMP DESIGNS BASED ON HIGHWAY STD 424001



PORTLAND CEMENT CONCRETE SIDEWALK, 6 IN 239.5 SQ FT

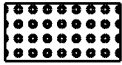



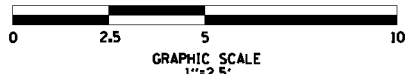
S WALNUT ST

W KASKASKIA ST

COMB. CONC. CURB & GUTTER TY. B6.12, 19.1 L.F.

LEGEND

-  DETECTABLE WARNINGS
-  LANDING AREA (2% MAX)



HMG ENGINEERS & SURVEYORS 9360 HOLY CROSS LANE BREESE, ILLINOIS 62230 (618) 526-9611	USER NAME = mobrien PLOT SCALE = 5.0000' / 1in. PLOT DATE = 3/9/2020	DESIGNED - M. O'BRIEN DRAWN - M. O'BRIEN CHECKED - T.J. KEYS DATE - 1-15-2020	REVISED - REVISED - REVISED - REVISED -	STATE OF ILLINOIS DEPARTMENT OF TRANSPORTATION	SOUTH WALNUT & WEST KASKASKIA NORTHWEST QUADRANT	F.A.U. RTE. 9956	SECTION 19-00033-00-R5	COUNTY PERRY	TOTAL SHEETS 16	SHEET NO. 12	CONTRACT NO. 99647 <small>ILLINOIS FED. AID PROJECT 45F1501</small>
	SCALE: 1" = 2.5' SHEET OF SHEETS STA. TO STA.										

SAN. SEW.
RIM: 433.08
I.E.: -----

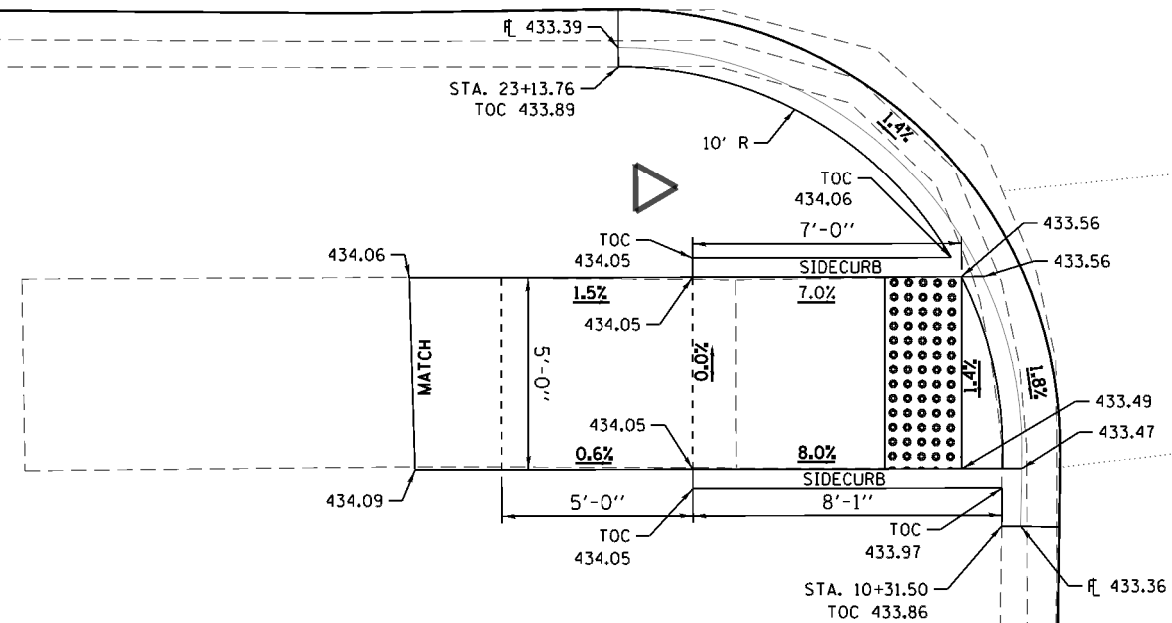
S WALNUT ST



NOTE: EARTH EXCAVATION REQUIRED FOR THE CONSTRUCTION OF SIDEWALKS AND RAMPS SHALL BE INCLUDED IN THE COST OF THE ITEM BEING CONSTRUCTED.

CURB RAMP DESIGNS BASED ON HIGHWAY STD 424001

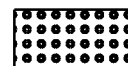
COMB. CONC. CURB & GUTTER
TY. B6.12, 18.6 L.F.



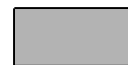
PORTLAND CEMENT CONCRETE
SIDEWALK, 6 IN 75.4 SQ FT

W SOUTH ST

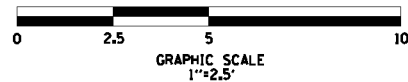
LEGEND



DETECTABLE WARNINGS



LANDING AREA (2% MAX)

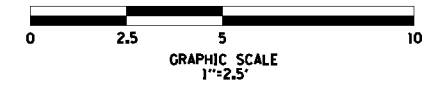


FILE NAME = D9XXXXX-sht-ramp_detail-06.dgn	DESIGNED - M. O'BRIEN	REVISED -	STATE OF ILLINOIS DEPARTMENT OF TRANSPORTATION	SOUTH WALNUT ST. & WEST SOUTH ST. SOUTHEAST QUADRANT		F.A.U. RTE. 9956	SECTION 19-00033-00-R5	COUNTY PERRY	TOTAL SHEETS 16	SHEET NO. 14
HMG ENGINEERS, INC. 9360 HOLY CROSS LANE BREESE, ILLINOIS 62230 (618) 526-9611	USER NAME = mobrien	DRAWN - M. O'BRIEN		REVISED -	SCALE: 1" = 2.5'	SHEET OF SHEETS	CONTRACT NO. 99647		ILLINOIS FED. AID PROJECT 4SEF(501)	
	PLOT SCALE = 5.0000' / 1in.	CHECKED - T.J. KEYS		REVISED -	STA.	TO STA.				
	PLOT DATE = 3/9/2020	DATE - 1-15-2020		REVISED -						

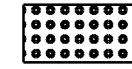
NOTE: EARTH EXCAVATION REQUIRED FOR THE CONSTRUCTION OF SIDEWALKS AND RAMPS SHALL BE INCLUDED IN THE COST OF THE ITEM BEING CONSTRUCTED.



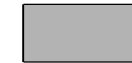
CURB RAMP DESIGNS BASED ON HIGHWAY STD 424021



LEGEND



DETECTABLE WARNINGS



LANDING AREA (2% MAX)

COMB. CONC. CURB & GUTTER
TY. B6.12, 28.2 L.F.

PORTLAND CEMENT CONCRETE
SIDEWALK, 6 IN 416.6 SQ FT

COMMERCIAL BUILDING

CONCRETE

LANDSCAPING

INSTALL 3" PVC DRAIN PIPE

LANDSCAPING

STEPS

RETAINING WALL

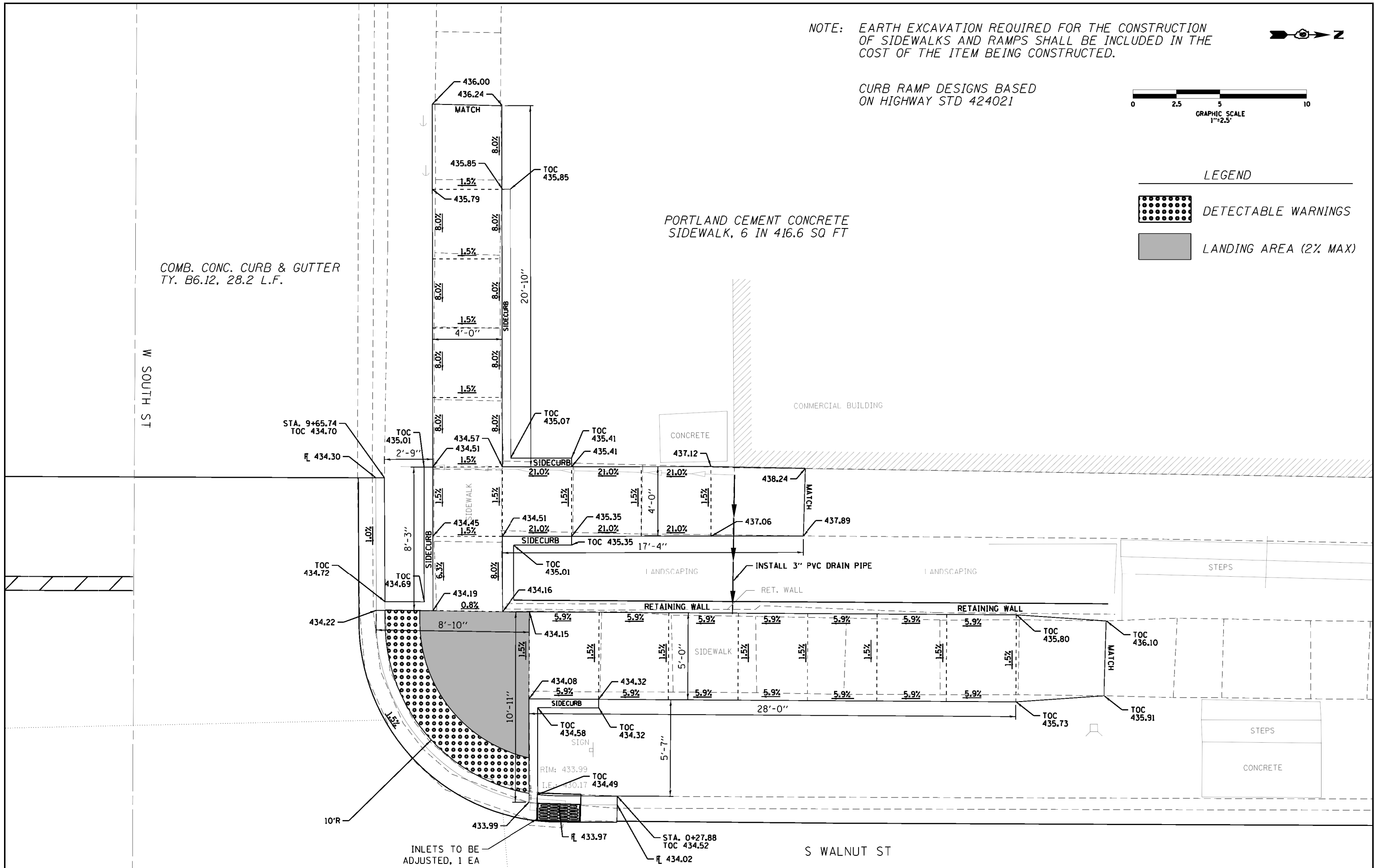
RETAINING WALL

SIDEWALK

STEPS

CONCRETE

S WALNUT ST



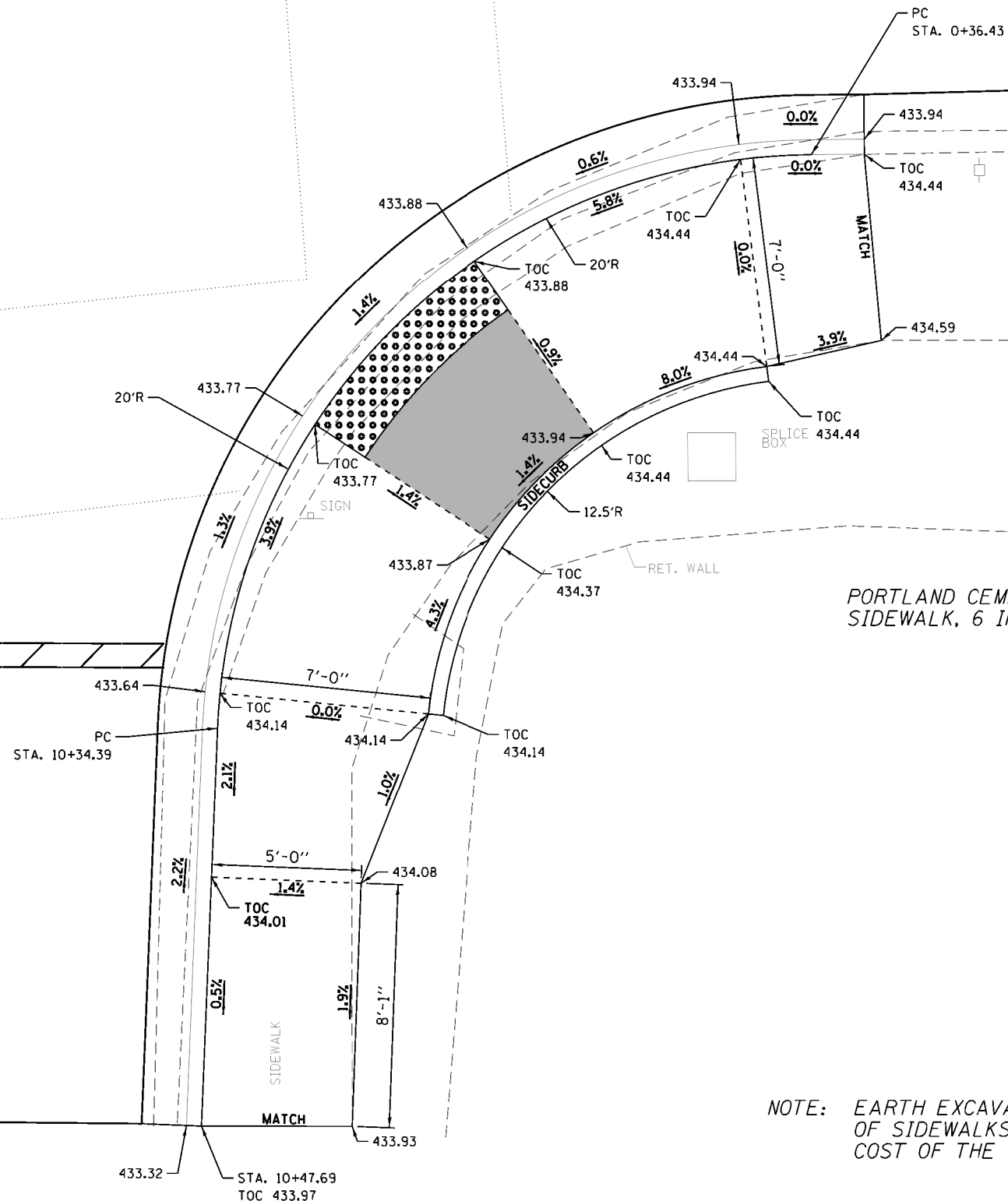
FILE NAME = D9XXXXX-sht-ramp detail-07.dgn HMG ENGINEERS, INC. 9360 HOLY CROSS LANE BREESE, ILLINOIS 62230 (618) 526-9611	DESIGNED - T.J. KEYS	REVISED -	STATE OF ILLINOIS DEPARTMENT OF TRANSPORTATION	SOUTH WALNUT ST. & WEST SOUTH ST.		F.A.U. RTE. 9956	SECTION 19-00033-00-R5	COUNTY PERRY	TOTAL SHEETS 16	SHEET NO. 15
	USER NAME = mobrien PLOT SCALE = 5.0000' / 1"	DRAWN - T.J. KEYS		REVISED -	NORTHWEST QUADRANT		CONTRACT NO. 99647	ILLINOIS FED. AID PROJECT 4SEF(501)		
PLOT DATE = 3/9/2020	CHECKED - M. O'BRIEN	REVISED -	SCALE: 1" = 2.5'	SHEET OF SHEETS	STA. TO STA.					
DATE - 2-12-2020	INLETS TO BE ADJUSTED, 1 EA	STA. 0+27.88 TOC 434.52								

S WALNUT ST

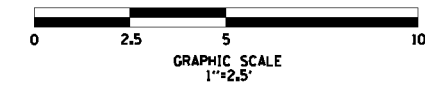


COMB. CONC. CURB & GUTTER
TY. B6.12, 46.2 L.F.

W SOUTH ST



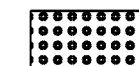
PORTLAND CEMENT CONCRETE
SIDEWALK, 6 IN 259.5 SQ FT



NOTE: EARTH EXCAVATION REQUIRED FOR THE CONSTRUCTION OF SIDEWALKS AND RAMPS SHALL BE INCLUDED IN THE COST OF THE ITEM BEING CONSTRUCTED.

CURB RAMP DESIGNS BASED ON HIGHWAY STD 424011

LEGEND



DETECTABLE WARNINGS



LANDING AREA (2% MAX)

FILE NAME = D9XXXXX-sht-ramp detail-08.dgn
HMG HMG ENGINEERS, INC.
 9360 HOLY CROSS LANE
 BREESE, ILLINOIS 62230
 (618) 526-9611

USER NAME = mobrien
 PLOT SCALE = 5.0000' / 1" = 5.0000'
 PLOT DATE = 3/9/2020

DESIGNED - M. O'BRIEN
 DRAWN - M. O'BRIEN
 CHECKED - T.J. KEYS
 DATE - 1-15-2020

REVISED -
 REVISED -
 REVISED -
 REVISED -

STATE OF ILLINOIS
 DEPARTMENT OF TRANSPORTATION

SOUTH WALNUT ST. & WEST SOUTH ST.
 NORTHEAST QUADRANT

SCALE: 1" = 2.5' SHEET OF SHEETS STA. TO STA.

F.A.U. RTE.	SECTION	COUNTY	TOTAL SHEETS	SHEET NO.
9956	19-00033-00-R5	PERRY	16	16
CONTRACT NO. 99647				
ILLINOIS FED. AID PROJECT 4SEF(501)				