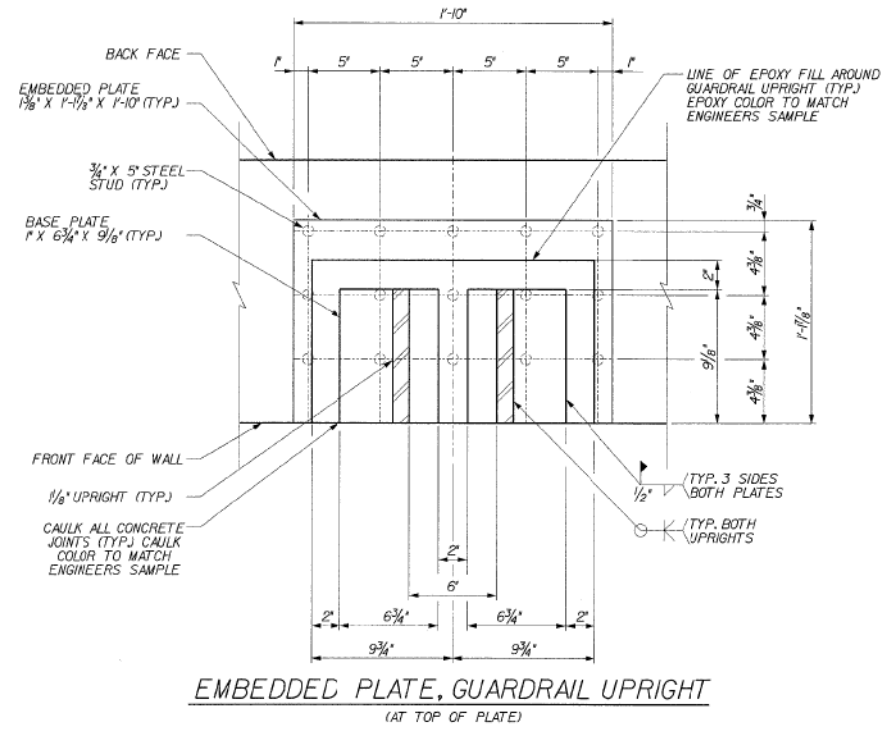


FOR INFORMATION ONLY

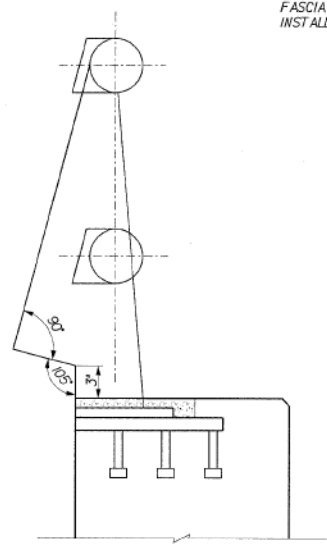
STATE OF ILLINOIS
DEPARTMENT OF TRANSPORTATION

ROUTE NO.	SECTION	COUNTY	TOTAL SHEETS	SHEET NO.	SHEET NO. 19
FAP 9094	*	COOK	246	143	27 SHEETS
FED. ROAD DIST. # 1 ILLINOIS FED. AID PROJECT					
* SECT. 1202.6 - 2P, ETC., 1415 & 1517 R-7					
CONTRACT NUMBER 62408					

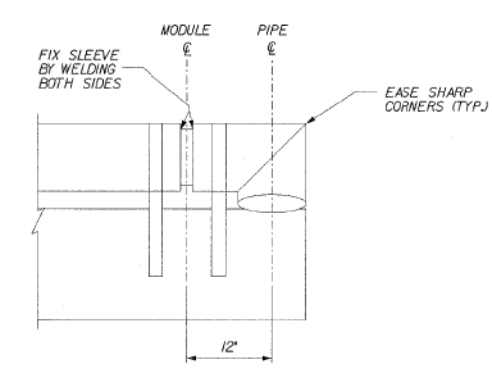


EMBEDDED PLATE, GUARDRAIL UPRIGHT
(AT TOP OF PLATE)

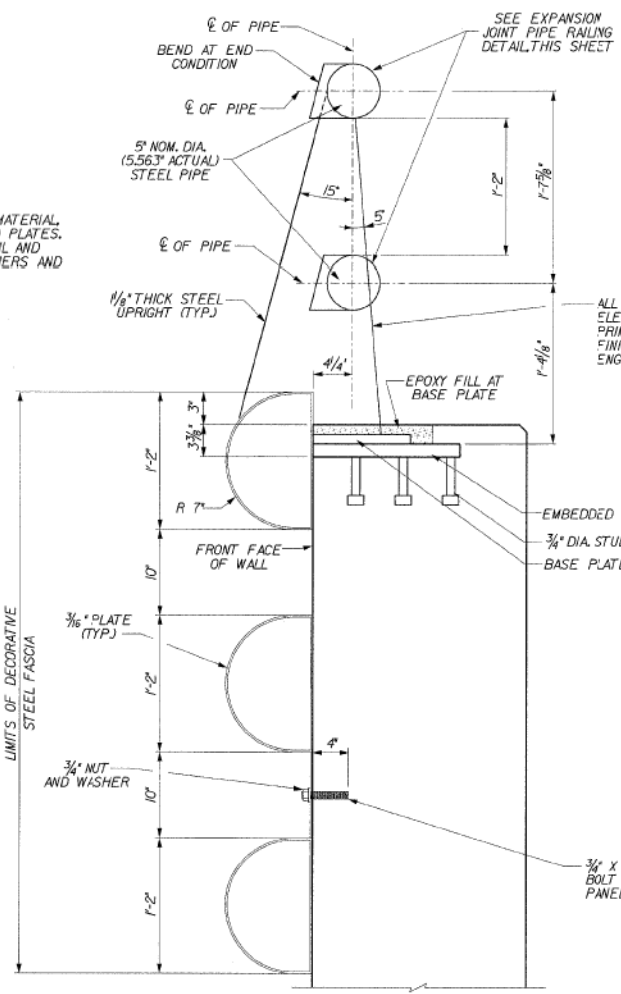
NOTE:
THE CONTRACTOR IS TO FURNISH MATERIAL, FABRICATE AND INSTALL EMBEDDED PLATES. THE DECORATIVE STEEL GUARDRAIL AND FASCIA IS TO BE SUPPLIED BY OTHERS AND INSTALLED BY THE CONTRACTOR.



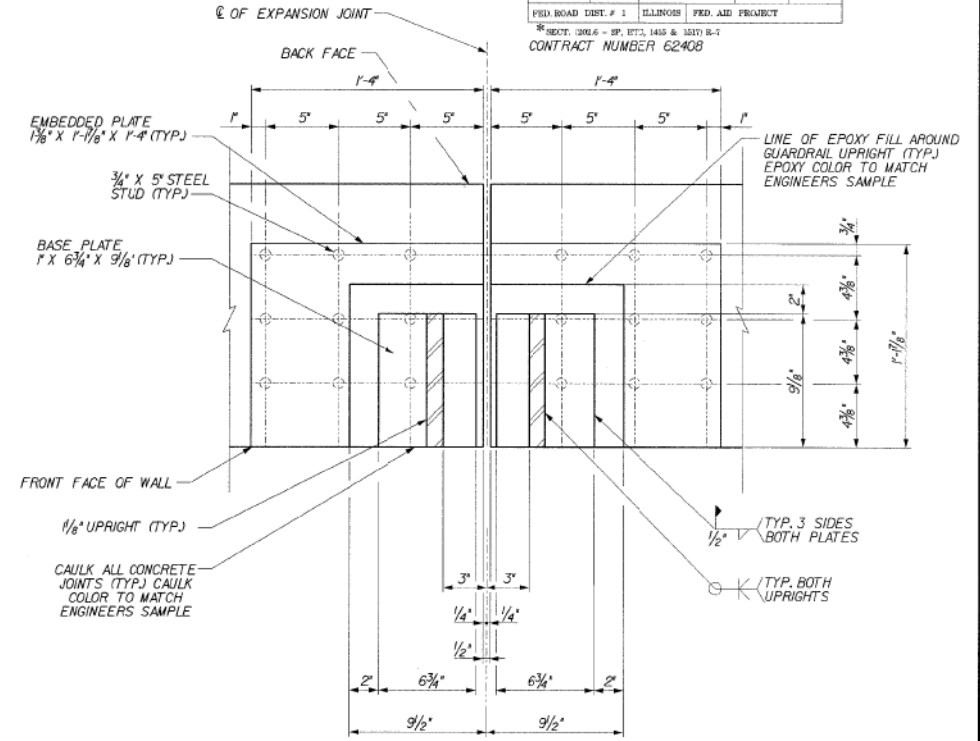
ELEVATION W/OUT DECORATIVE FASCIA
(SEE ELEVATION W/DECORATIVE FASCIA FOR DIMENSIONS)



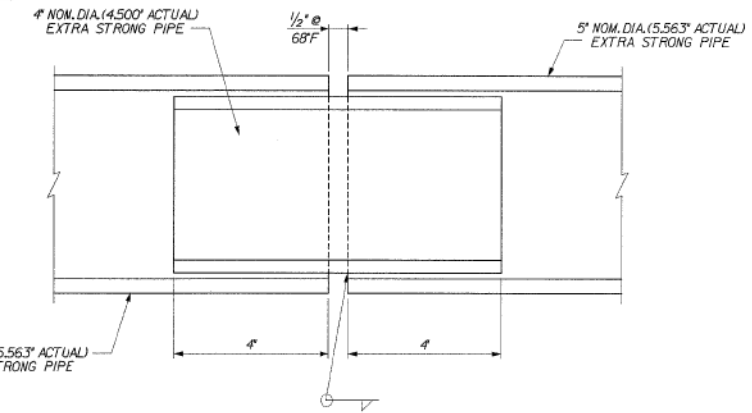
GUARDRAIL END
CONDITION PLAN



ELEVATION W/DECORATIVE FASCIA



EMBEDDED PLATE,
GUARDRAIL UPRIGHT AT
EXPANSION JOINT
(AT TOP OF PLATE)



EXPANSION JOINT PIPE RAILING
(SHOWN ALONG Q OF PIPE)

04-Feb-2009 09:21 e:\Dgn\Structures\311609 100 94-retwall\ILL 190 104\RAMPF\CONTENTS\10-BuildingDetails.dgn

DESIGNED	DPW
CHECKED	ASP
DRAWN	MJS
CHECKED	MBJ

REVISIONS	
NAME	DATE

DLZ 85 W. Algonquin Rd. Ste. 220
Arlington Heights IL 60005

**RETAINING WALL RAMP F
RAILING SYSTEM DETAILS**
I-90/94 KENNEDY EXPRESSWAY
(HUBBARDS CAVE TO I-290)
SECT. (202.6 - 2P, ETC., 1415 & 1517) R-7
STATION 13+45 LT 22' TO 10+59 LT 22'
COOK COUNTY
STRUCTURE NUMBER 016-W807

11:34:31 AM D:\60X94-SHT-AS-BUILT-121.dgn



USER NAME = vjjanachone	DESIGNED - JTF	REVISED -
PLOT SCALE = NTS	CHECKED - WJC	REVISED -
PLOT DATE = 3/6/2020	DRAWN - JTF	REVISED -
	CHECKED - WJC	REVISED -

STATE OF ILLINOIS
DEPARTMENT OF TRANSPORTATION

EXISTING RECORD DRAWINGS

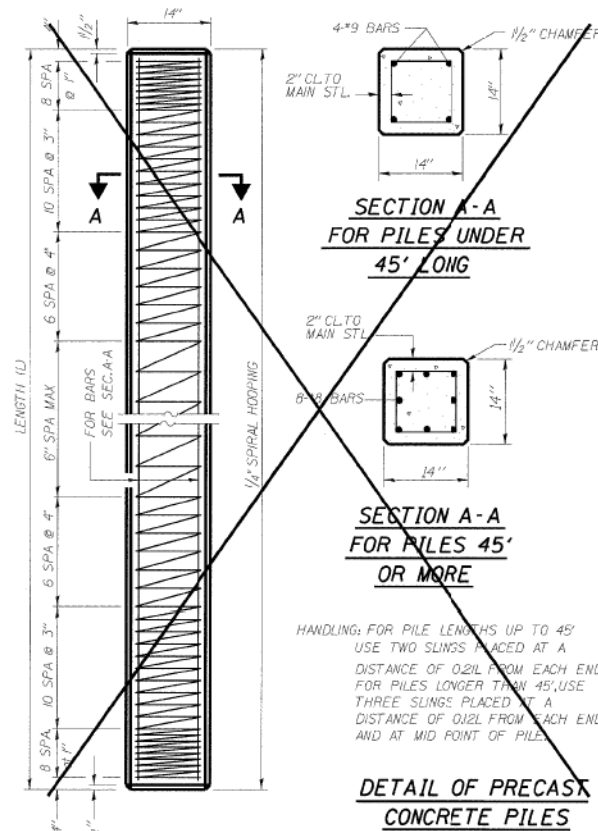
SHEET NO. AB-121 OF AB-145 SHEETS

F.A.I. RTE.	SECTION	COUNTY	TOTAL SHEETS	SHEET NO.
90/94	2014-015R&B-R	COOK	825	801
CONTRACT NO.			60X94	
ILLINOIS FED. AID PROJECT				

FOR INFORMATION ONLY

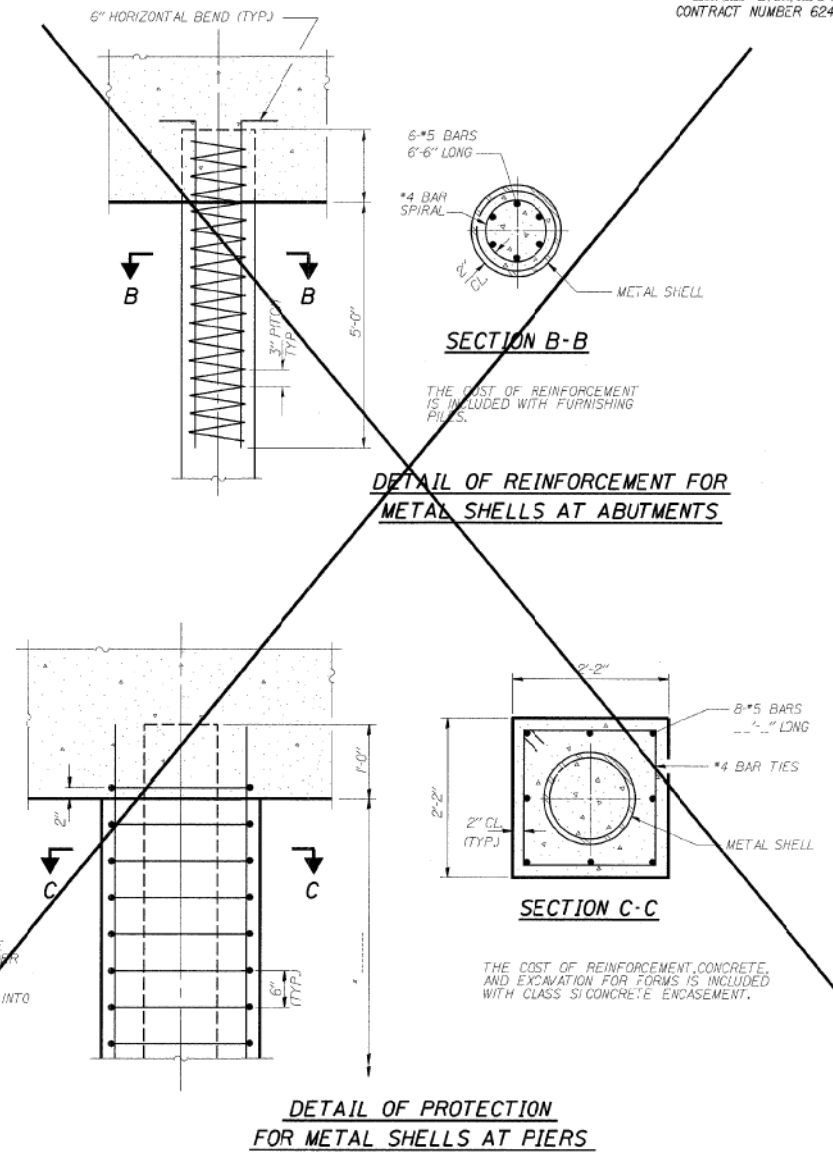
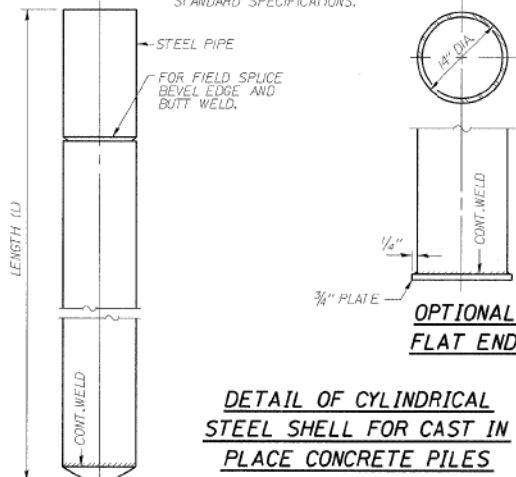
STATE OF ILLINOIS
DEPARTMENT OF TRANSPORTATION

ROUTE NO.	SECTION	COUNTY	TOTAL SHEETS	SHEET NO.	SHEET NO. 21
FAP 9094	*	COOK	246	145	27 SHEETS
FED. ROAD DIST. # 1 ILLINOIS FED. AID PROJECT					
SECT. 102.6 - 2P, ETC., 1415 & 1517 R-7 CONTRACT NUMBER 62408					



DETAIL OF PRECAST CONCRETE PILES

NOTES:
DRAWING AND BEARING ENDS OF PIPE SHALL BE CUT SQUARE. THE THICKNESS OF THE SHELL SHALL BE 0.250 INCHES WITH A TOLERANCE OF 8%.
THE SHELL SHALL BE ACCORDING TO ARTICLE 1006.05(A) OF THE STANDARD SPECIFICATIONS.



CONCRETE PILE DETAILS

DLZ 85 W. ALGONQUIN RD. STE. 220
ARLINGTON HEIGHTS IL 60005

RETAINING WALL RAMP F
14" DIA METAL SHELL PILE
I-90/94 KENNEDY EXPRESSWAY
(HUBBARDS CAVE TO I-290)
SECT. 102.6 - 2P, ETC., 1415 & 1517 R-7
STATION 13+45 LT 22' TO 10+59 LT 22'
COOK COUNTY
STRUCTURE NUMBER 016-W807

REVISIONS	
NAME	DATE

01-Feb-2009 09:32 e:\Dgn\Structural\301009 100 04-retail\ILL 100 104\RAMPP\CONTPILES\21-Pile Detail.dgn

X-PB 4-30-97

11:34:49 AM D:\60X94-SHT-AS-BUILT-123.dgn



USER NAME = vjjanachone	DESIGNED - JTF	REVISED -
PLOT SCALE = NTS	CHECKED - WJC	REVISED -
PLOT DATE = 3/6/2020	DRAWN - JTF	REVISED -
	CHECKED - WJC	REVISED -

STATE OF ILLINOIS
DEPARTMENT OF TRANSPORTATION

EXISTING RECORD DRAWINGS

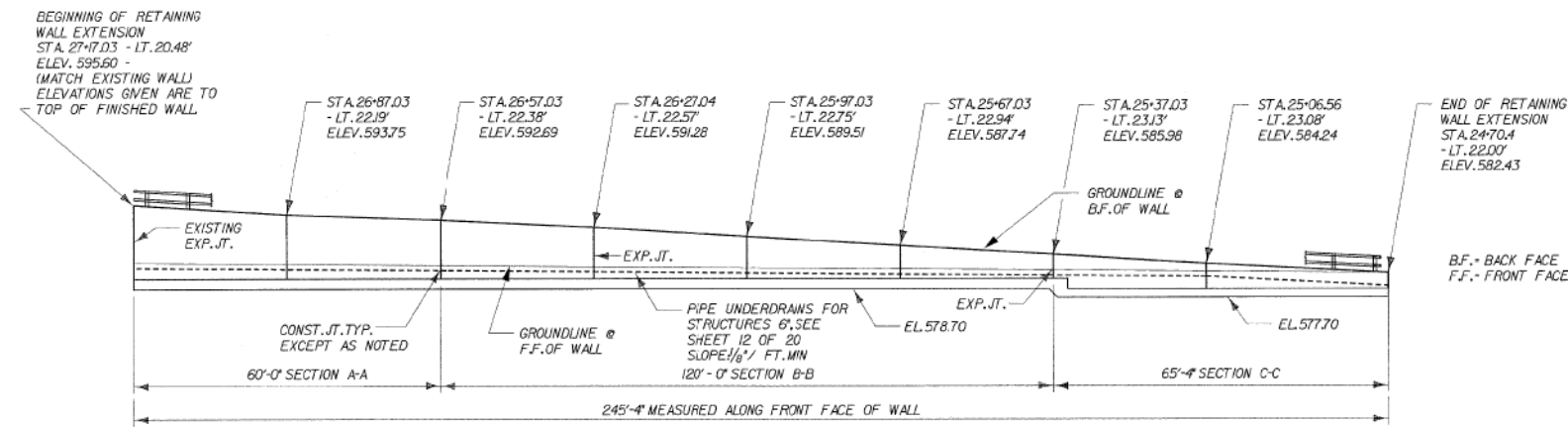
SHEET NO. AB-123 OF AB-145 SHEETS

F.A.I. RTE.	SECTION	COUNTY	TOTAL SHEETS	SHEET NO.
90/94	2014-015R&B-R	COOK	825	803
CONTRACT NO.			60X94	
ILLINOIS FED. AID PROJECT				

FOR INFORMATION ONLY

STATE OF ILLINOIS
DEPARTMENT OF TRANSPORTATION

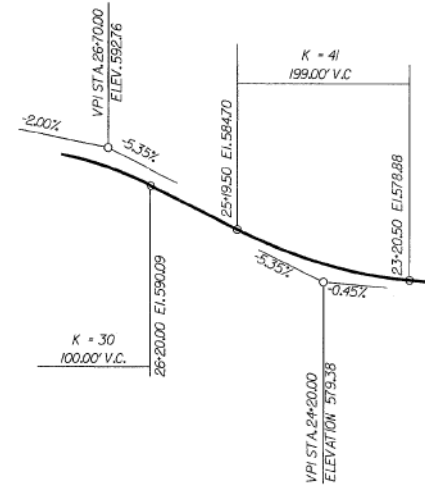
ROUTE NO.	SECTION	COUNTY	TOTAL SHEETS	SHEET NO.	SHEET NO. 1
FAP 99/4	*	COOK	246	152	20 SHEETS
FED. ROAD DIST. # 1 ILLINOIS FED. AID PROJECT					
*SECT. (202.6 - 2P, ETC, 1415 & 1517) R-7					
CONTRACT NUMBER 62408					



BENCH MARK
BM 901 - NW ANCHOR BOLT OF HIGH MAST LIGHT POLE
STA. 32+81 - 96 FT. LEFT; ELEV. = 587.33

EXISTING STRUCTURE NO. 016-W808
190/194 RAMP H - ADAMS ST. EXIT RAMP
BUILT IN 1957, CONSISTS OF CAST-IN-PLACE CONCRETE
RETAINING WALL SUPPORTED ON CONCRETE PILING

PROPOSED IMPROVEMENTS
EXISTING STRUCTURE TO BE REMOVED AND REPLACED
WITH A CAST-IN-PLACE CONCRETE T-TYPE RETAINING
WALL SUPPORTED ON CONCRETE FILLED METAL SHELL
PILES. NO SALVAGE.

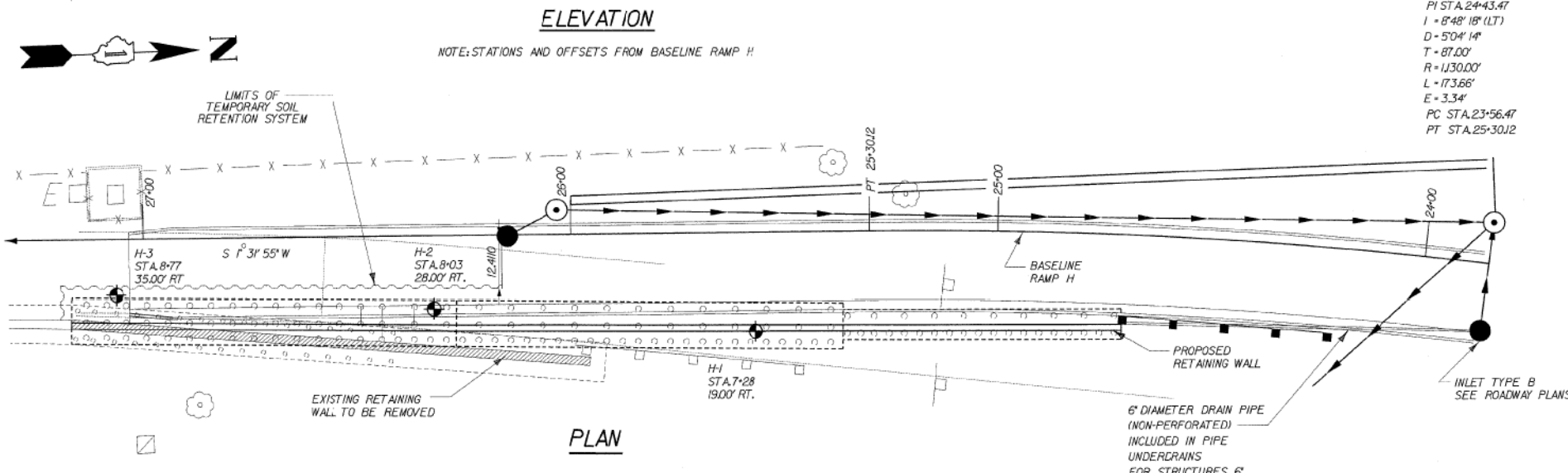


HORIZONTAL CURVE DATA

RAMP H
PI STA. 24+43.47
I = 8'48" 18' (LT)
D = 504' 14"
T = 87.00'
R = 1130.00'
L = 173.66'
E = 3.34'
PC STA. 23+56.47
PT STA. 25+30.12

PROFILE GRADE RAMP H

(@ BASELINE SURVEY RAMP H)



GENERAL NOTES

- REINFORCEMENT BARS SHALL CONFORM TO THE REQUIREMENTS OF ASTM A 706 GR60, SEE SPECIAL PROVISIONS.
- REINFORCEMENT BARS DESIGNATED (E) SHALL BE EPOXY COATED.
- PLAN DIMENSIONS AND DETAILS RELATIVE TO EXISTING STRUCTURES HAVE BEEN TAKEN FROM FIELD MEASUREMENTS AND ARE SUBJECT TO NOMINAL CONSTRUCTION VARIATIONS. IT SHALL BE THE CONTRACTOR'S RESPONSIBILITY TO VERIFY SUCH DIMENSIONS AND DETAILS IN THE FIELD AND MAKE NECESSARY APPROVED ADJUSTMENTS PRIOR TO CONSTRUCTION OR ORDERING OF MATERIALS, SUCH VARIATIONS SHALL NOT BE CAUSE FOR ADDITIONAL COMPENSATION FOR A CHANGE IN THE SCOPE OF THE WORK, HOWEVER, THE CONTRACTOR WILL BE PAID FOR THE QUANTITY ACTUALLY FURNISHED AT THE UNIT PRICE FOR THE WORK.
- REMOVAL OF THE EXISTING RAMP H RETAINING WALL, INCLUDING EXISTING PILE TOPS AND BACKFILLING WITH GRANULAR MATERIAL TO EL. 578.7, TO BE INCLUDED IN REMOVAL OF EXISTING STRUCTURES.
- THE CONTRACTOR SHALL DRIVE ONE METAL SHELL PILE 14" DIAMETER TEST PILE IN A PERMANENT LOCATION NEAR BORING H-2 AS INDICATED ON THE PLANS AND AS DIRECTED BY THE ENGINEER BEFORE ORDERING THE REMAINDER OF PILES.
- A CANTILEVERED SHEET PILING DESIGN DOES NOT APPEAR FEASIBLE AND ADDITIONAL MEMBERS OR OTHER RETENTION SYSTEMS MAY BE NECESSARY. THE CONTRACTOR SHALL SUBMIT A TEMPORARY SOIL RETENTION SYSTEM DESIGN INCLUDING PLAN DETAILS AND CALCULATIONS FOR REVIEW AND ACCEPTANCE BY THE ENGINEER.
- ALL CONSTRUCTION JOINTS SHALL BE BONDED.

DESIGN SPECIFICATIONS

2002 AASHTO SPECIFICATIONS FOR HIGHWAY BRIDGES

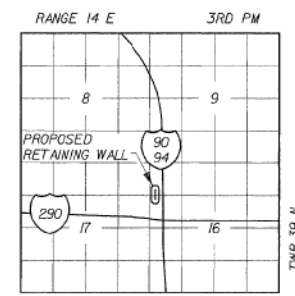
DESIGN STRESSES

LOADINGS
EQUIVALENT FLUID SOIL PRESSURE = 40 pcf
TRAFFIC SURCHARGE PRESSURE = 240 pcf
F'c = 3,500 PSI (CONCRETE)
Fy = 60,000 PSI (REINFORCEMENT)

APPROVED
FOR STRUCTURAL ADEQUACY ONLY
Ralph E. Anderson
ENGINEER OF BRIDGES AND STRUCTURES

TOTAL BILL OF MATERIAL

ITEM	UNIT	QUANTITY
CONCRETE STRUCTURES	CU YD	293.5
TEMPORARY SOIL RETENTION SYSTEM	SQ FT	1,000
CONCRETE REMOVAL	CU YD	95
REINFORCEMENT BARS	POUND	19,000
REINFORCEMENT BARS, EPOXY COATED	POUND	4,920
STRUCTURE EXCAVATION	CU YD	1,090
FURNISHING METAL SHELL PILES 14" x 0.250"	FOOT	7,683
DRIVING PILES	FOOT	7,683
TEST PILE METAL SHELLS	EACH	1
GEOCOMPOSITE WALL DRAIN	SQ YD	197
PIPE UNDERDRAINS FOR STRUCTURES 6"	FOOT	246
RUSTICATION FINISH	SQ FT	1,420
INSTALL DECORATIVE STEEL GUARDRAIL	FOOT	245
INSTALL DECORATIVE STEEL FASCIA	FOOT	182
EMBEDDED PLATE, GUARDRAIL UPRIGHT, EXPANSION JOINT	EACH	4
EMBEDDED PLATE, GUARDRAIL UPRIGHT	EACH	33
REPAIR OF FASCIA PANELS, EXIT RAMP H	LS	1



LOCATION SKETCH

DESIGNED	BCF
CHECKED	JMM
DRAWN	BCF & DPW
CHECKED	JMM

DLZ ILLINOIS, LLC.
ARLINGTON HEIGHTS, ILLINOIS
Signed: *Ralph E. Anderson*
Date: 02-25-2009
Expiration Date: 11/30/10



DLZ
85 W. Algonquin Rd. Ste. 220
Arlington Heights, IL 60005

REVISIONS	
NAME	DATE

RETAINING WALL RAMP H
GENERAL PLAN & ELEVATION
I-90/94 KENNEDY EXPRESSWAY
(HUBBARDS CAVE TO I-290)
SECT. (202.6 - 2P, ETC, 1415 & 1517) R-7
STATION 27+17, LT. 205' TO 24+70, LT. 22'
(RAMP F BASELINE)
COOK COUNTY
STRUCTURE NUMBER 016-W808

11:34:58 AM
D:\60X94-SHT-AS-BUILT-124.dgn



USER NAME = v1janachone	DESIGNED - JTF	REVISED -
PLOT SCALE = NTS	CHECKED - WJC	REVISED -
PLOT DATE = 3/6/2020	DRAWN - JTF	REVISED -
	CHECKED - WJC	REVISED -

STATE OF ILLINOIS
DEPARTMENT OF TRANSPORTATION

EXISTING RECORD DRAWINGS

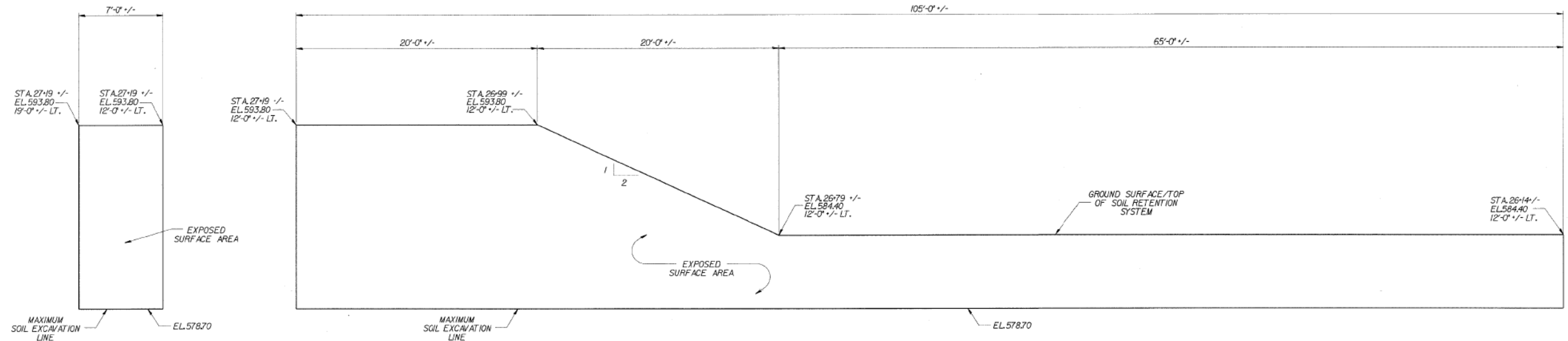
SHEET NO. AB-124 OF AB-145 SHEETS

F.A.I. RTE.	SECTION	COUNTY	TOTAL SHEETS	SHEET NO.
90/94	2014-015R&B-R	COOK	825	804
CONTRACT NO.				60X94
ILLINOIS FED. AID PROJECT				

FOR INFORMATION ONLY

STATE OF ILLINOIS
DEPARTMENT OF TRANSPORTATION

ROUTE NO.	SECTION	COUNTY	TOTAL SHEETS	SHEET NO.	SHEET NO. 2
FAP 9094	*	COOK	246	133	20 SHEETS
FED. ROAD DIST. # 1		ILLINOIS	FED. AID PROJECT		
* SECT. 081.6 - 2P, ETC, 1415 & 1517 B-1					
CONTRACT NUMBER 62408					



TEMPORARY SOIL RETENTION SYSTEM

04-Feb-2020 09:53 s:\Dept\Structures\20199 100 94-retwall\111 100 104\RAMPH\DOCFILES\TEMP\SOILRETSYSTEM.dgn

DESIGNED	DPW
CHECKED	ASP
DRAWN	BEM
CHECKED	ASP

DLZ
DLZ Illinois, Inc.
85 W. Algonquin Ra. Ste. 220
Arlington Heights Il 60005

REVISIONS	
NAME	DATE

**RETAINING WALL RAMP H
TEMPORARY SOIL RETENTION SYSTEM**
I-90/94 KENNEDY EXPRESSWAY
(HUBBARDS CAVE TO I-290)
SECT.(202.6 - 2P, ETC, 1415 & 1517) R-7
STATION 27+17, LT. 20.5' TO 24+70, LT. 22'
(RAMP F BASELINE)
COOK COUNTY
STRUCTURE NUMBER 016-W80B

11:35:07 AM
D:\60X94-SHT-AS-BUILT-125.dgn



USER NAME = vjjanachone	DESIGNED - JTF	REVISED -
PLOT SCALE = NTS	CHECKED - WJC	REVISED -
PLOT DATE = 3/6/2020	DRAWN - JTF	REVISED -
	CHECKED - WJC	REVISED -

STATE OF ILLINOIS
DEPARTMENT OF TRANSPORTATION

EXISTING RECORD DRAWINGS

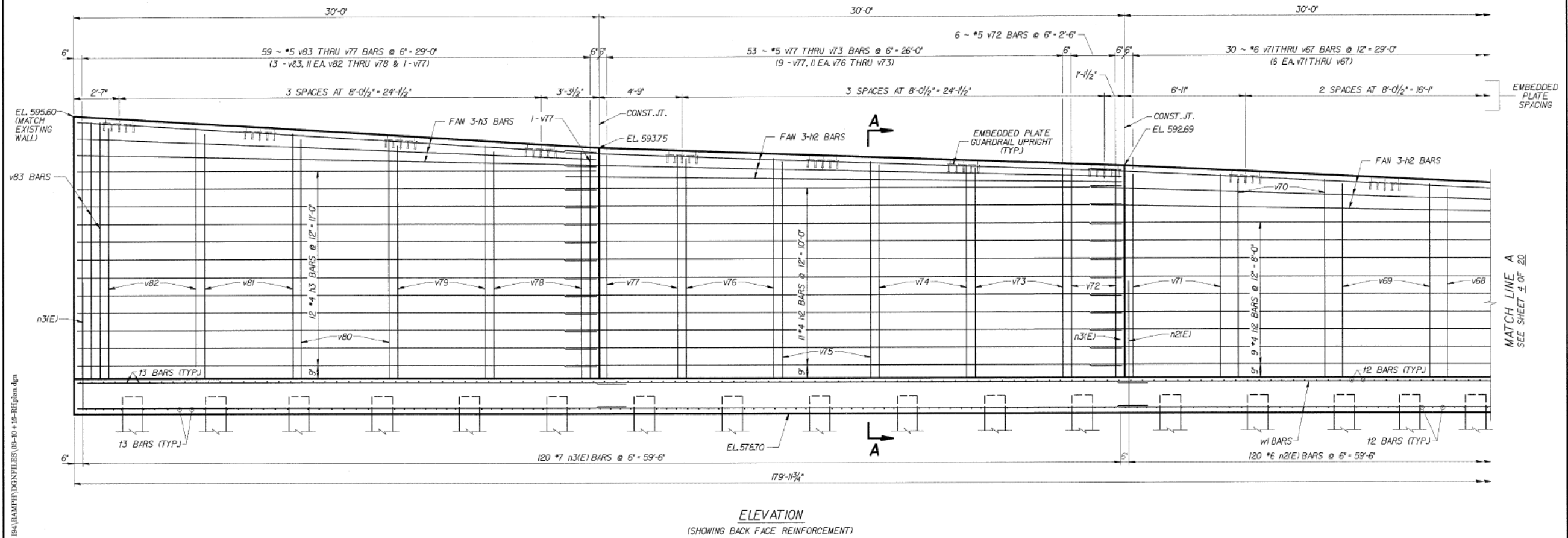
SHEET NO. AB-125 OF AB-145 SHEETS

F.A.I. RTE.	SECTION	COUNTY	TOTAL SHEETS	SHEET NO.
90/94	2014-015R&B-R	COOK	825	805
CONTRACT NO.			60X94	
ILLINOIS FED. AID PROJECT				

FOR INFORMATION ONLY

STATE OF ILLINOIS
DEPARTMENT OF TRANSPORTATION

ROUTE NO.	SECTION	COUNTY	TOTAL SHEETS	SHEET NO.	SHEET NO. 3
90/94	*	COOK	246	154	20 SHEETS
FED. ROAD DIST. # 1		ILLINOIS	FED. AID PROJECT		
<small>SECTION 016.0 - 2P, ETC, 1415 & 1517 R-7 CONTRACT NUMBER 62408</small>					



ELEVATION
(SHOWING BACK FACE REINFORCEMENT)

04-Feb-2009 09:34 s:\Dept\Structures\30099 190 94-revall\JLL 194 (10AMP)\CONFILES\08-10-16-Billhandga

DESIGNED	CMF
CHECKED	LTX
DRAWN	DPW
CHECKED	JMM

MINIMUM BAR LAPS
 *4 BARS - 1'-8"
 *6 BARS - 5'-6"
 *7 BARS - 5'-6"

REVISIONS	
NAME	DATE

**RETAINING WALL RAMP H
DETAILS**
 I-90/94 KENNEDY EXPRESSWAY
 (HUBBARDS CAVE TO I-290,
 SECT. (202.6 - 2P, ETC, 1415 & 1517) R-7
 STATION 27+17, LT. 20.5' TO 24+70, LT. 22'
 (RAMP F BASELINE)
 COOK COUNTY
 STRUCTURE NUMBER 016-W808

DLZ 85 W. Algonquin Rd. Ste. 220
Arlington Heights IL 60005

11:35:16 AM
D:\60X94-SHT-AS-BUILT-126.dgn



USER NAME = v1janachone	DESIGNED - JTF	REVISED -
PLOT SCALE = NTS	CHECKED - WJC	REVISED -
PLOT DATE = 3/6/2020	DRAWN - JTF	REVISED -
	CHECKED - WJC	REVISED -

**STATE OF ILLINOIS
DEPARTMENT OF TRANSPORTATION**

EXISTING RECORD DRAWINGS

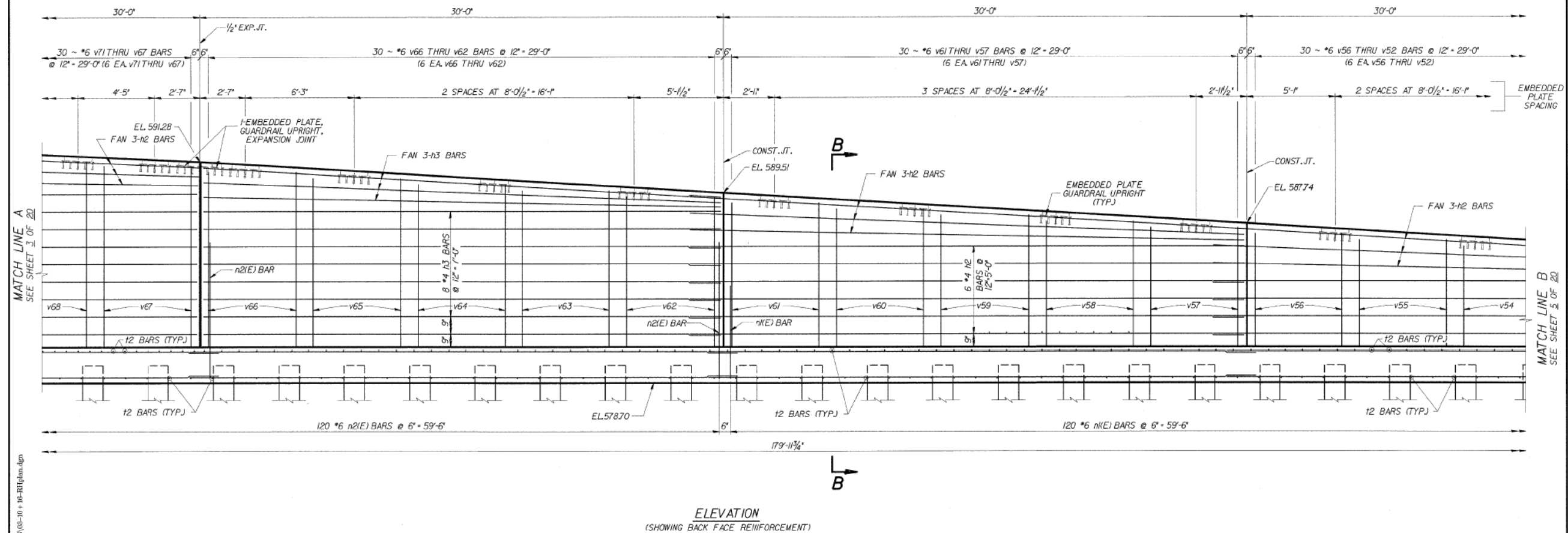
SHEET NO. AB-126 OF AB-145 SHEETS

F.A.I. RTE.	SECTION	COUNTY	TOTAL SHEETS	SHEET NO.
90/94	2014-015R&B-R	COOK	825	806
CONTRACT NO.			60X94	
<small>ILLINOIS FED. AID PROJECT</small>				

FOR INFORMATION ONLY

STATE OF ILLINOIS
DEPARTMENT OF TRANSPORTATION

ROUTE NO.	SECTION	COUNTY	TOTAL SHEETS	SHEET NO.	SHEET NO. 4
FAP 9094	*	COOK	246	155	20 SHEETS
FED. ROAD DIST. # 1		ILLINOIS	FED. AID PROJECT		
* SECT. 0202.6 - 2P, ETC, 1415 & 1517 R-7 CONTRACT NUMBER 62408					



s:\Dpt\Structures\010999 190 94-retwall\ILL 190 194\RAMPH\CONTFILES\05-10-16-BHplan.dgn
 04-Feb-2009 09:34

DESIGNED	CMF
CHECKED	LTX
DRAWN	DPW
CHECKED	JMM

MINIMUM BAR LAPS
 *4 BARS - 7'-6"
 *6 BARS - 5'-6"

REVISIONS	
NAME	DATE

**RETAINING WALL RAMP H
DETAILS**
 I-90/94 KENNEDY EXPRESSWAY
 (HUBBARDS CAVE TO I-290)
 SECT.(202.6 - 2P, ETC, 1415 & 1517) R-7
 STATION 27+17, LT. 20.5' TO 24+70, LT. 22'
 (RAMP F BASELINE)
 COOK COUNTY
 STRUCTURE NUMBER 016-W80B

DLZ
 85 W. Algonquin Rd. Ste. 220
 Arlington Heights IL 60005

11:35:26 AM
 D:\60X94-SHT-AS-BUILT-127.dgn



USER NAME = v1janachone	DESIGNED - JTF	REVISED -
	CHECKED - WJC	REVISED -
PLOT SCALE = NTS	DRAWN - JTF	REVISED -
PLOT DATE = 3/6/2020	CHECKED - WJC	REVISED -

**STATE OF ILLINOIS
DEPARTMENT OF TRANSPORTATION**

EXISTING RECORD DRAWINGS

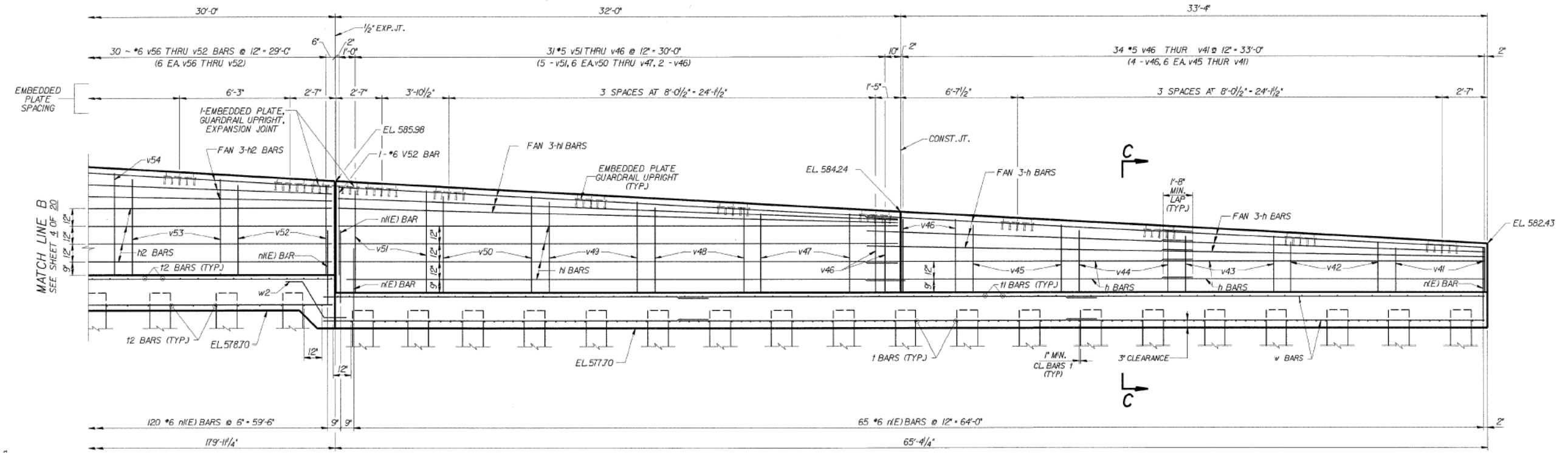
SHEET NO. AB-127 OF AB-145 SHEETS

F.A.I. RTE.	SECTION	COUNTY	TOTAL SHEETS	SHEET NO.
90/94	2014-015R&B-R	COOK	825	807
CONTRACT NO.			60X94	
ILLINOIS FED. AID PROJECT				

FOR INFORMATION ONLY

STATE OF ILLINOIS
DEPARTMENT OF TRANSPORTATION

ROUTE NO.	SECTION	COUNTY	TOTAL SHEETS	SHEET NO.	SHEET NO. 6
FAP 9094	*	COOK	246	156	20 SHEETS
FED. ROAD DIST. # 1		ILLINOIS	FED. AID PROJECT		
<small>SECT. 202.6 - 2P, ETC, 1415 & 1517 R-7 CONTRACT NUMBER 62408</small>					



s:\Dcp\Structures\300899 190 94-retwall\ILL 190 194\CAMPH\CONTRFILES\08-10-15-15\15plan.dgn
 04-Feb-2020 09:34

DESIGNED	CMF
CHECKED	LTX
DRAWN	DPW
CHECKED	JMM

MINIMUM BAR LAPS
 *4 BARS - 1'-8"
 *5 BARS - 2'-6" r(E)
 *6 BARS - 2'-10" r(E)

REVISIONS	
NAME	DATE

**RETAINING WALL RAMP H
DETAILS**
 I-90/94 KENNEDY EXPRESSWAY
 (HUBBARDS CAVE TO I-290)
 SECT.(202.6 - 2P, ETC, 1415 & 1517) R-7
 STATION 27+17, LT. 20.5' TO 24+70, LT. 22'
 (RAMP F BASELINE)
 COOK COUNTY
 STRUCTURE NUMBER 016-W808

DLZ 85 W. Algonquin Rd. Ste. 220
 Arlington Heights IL 60005

11:35:36 AM D:\60X94-SHT-AS-BUILT-128.dgn



USER NAME = v1janachone	DESIGNED - JTF	REVISED -
PLOT SCALE = NTS	CHECKED - WJC	REVISED -
PLOT DATE = 3/6/2020	DRAWN - JTF	REVISED -
	CHECKED - WJC	REVISED -

**STATE OF ILLINOIS
DEPARTMENT OF TRANSPORTATION**

EXISTING RECORD DRAWINGS

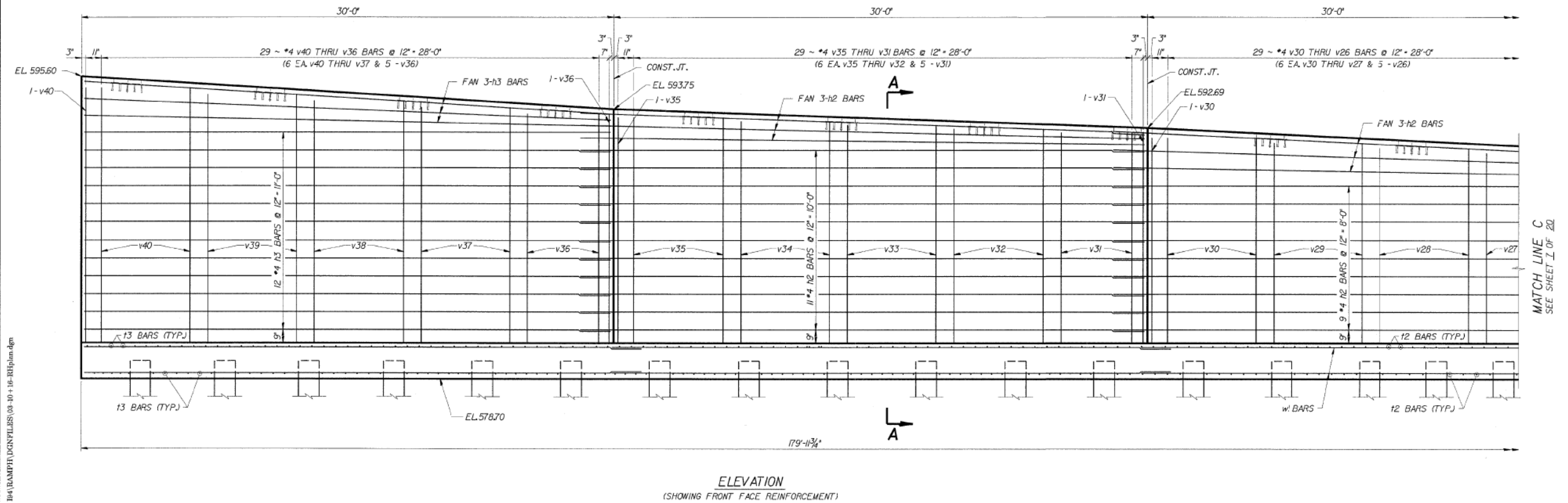
SHEET NO. AB-128 OF AB-145 SHEETS

F.A.I. RTE.	SECTION	COUNTY	TOTAL SHEETS	SHEET NO.
90/94	2014-015R&B-R	COOK	825	808
CONTRACT NO.			60X94	
<small>ILLINOIS FED. AID PROJECT</small>				

FOR INFORMATION ONLY

STATE OF ILLINOIS
DEPARTMENT OF TRANSPORTATION

ROUTE NO.	SECTION	COUNTY	TOTAL SHEETS	SHEET NO.	SHEET NO. 6
FAP 9094	*	COOK	246	157	20 SHEETS
FED. ROAD DIST. # 1		ILLINOIS	FED. AID PROJECT		
* SECT. 202.6 - 2P, ETC, 1415 & 1517 R-7					
CONTRACT NUMBER 62408					



ELEVATION
(SHOWING FRONT FACE REINFORCEMENT)

04-Feb-2009 09:34 a:\Dept\Structures\301909 190 04-retwall\ILL 190 194\RAMPH\CONTFILES\03-10-16-REPlan.dgn

DESIGNED	CMP
CHECKED	LTX
DRAWN	DPW
CHECKED	JMM

MINIMUM BAR LAPS
*4 BARS = 1'-8"

DLZ 85 W. Algonquin Rd. Ste. 220
Arlington Heights IL 60005

REVISIONS	
NAME	DATE

**RETAINING WALL RAMP H
DETAILS**
I-90/94 KENNEDY EXPRESSWAY
(HUBBARDS CAVE TO I-290)
SECT. (202.6 - 2P, ETC, 1415 & 1517) R-7
STATION 27+17, LT. 20.5' TO 24+70, LT. 22'
(RAMP F BASELINE)
COOK COUNTY
STRUCTURE NUMBER 016-W808

MATCH LINE C
SEE SHEET I OF 20

11:35:46 AM
D:\60X94-SHT-AS-BUILT-129.dgn



USER NAME = v1janachone	DESIGNED - JTF	REVISED -
PLOT SCALE = NTS	CHECKED - WJC	REVISED -
PLOT DATE = 3/6/2020	DRAWN - JTF	REVISED -
	CHECKED - WJC	REVISED -

**STATE OF ILLINOIS
DEPARTMENT OF TRANSPORTATION**

EXISTING RECORD DRAWINGS

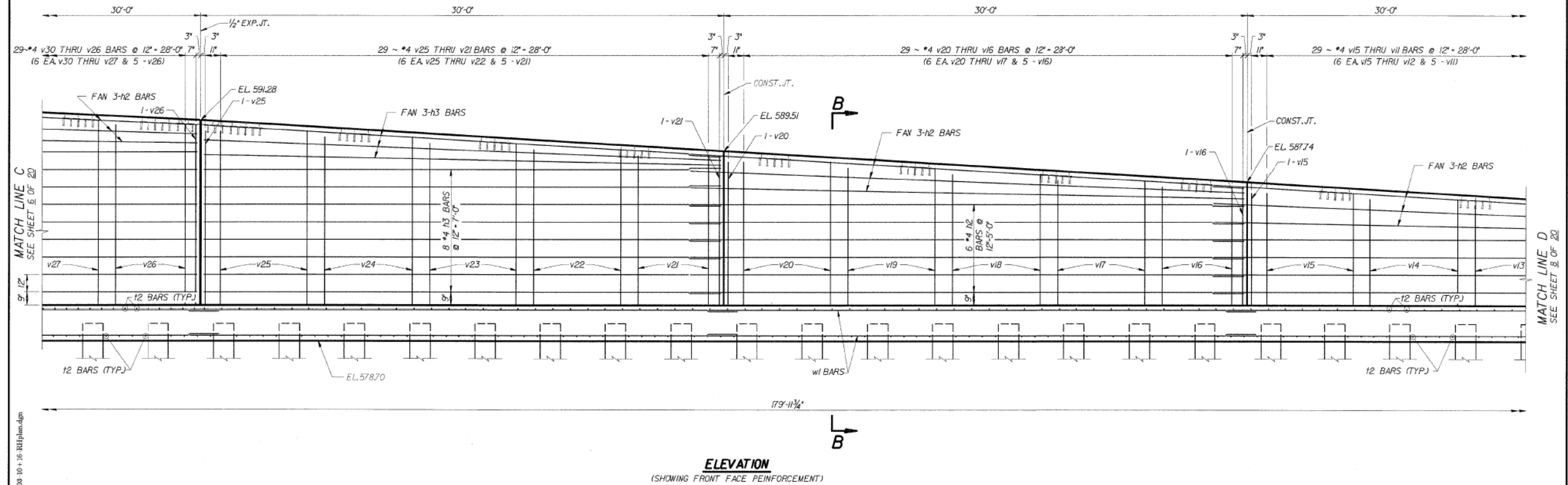
SHEET NO. AB-129 OF AB-145 SHEETS

F.A.I. RTE.	SECTION	COUNTY	TOTAL SHEETS	SHEET NO.
90/94	2014-015R&B-R	COOK	825	809
CONTRACT NO.			60X94	
ILLINOIS FED. AID PROJECT				

FOR INFORMATION ONLY

STATE OF ILLINOIS
DEPARTMENT OF TRANSPORTATION

ROUTE NO.	SECTION	COUNTY	TOTAL SHEETS	SHEET NO.	SHEET NO. 7
FAP 9054	#	COOK	246	158	20 SHEETS
FED. ROAD DIST. # 1 ILLINOIS FED. AID PROJECT					
* SECT. 202.6 - 2P, ETC, 1415 & 1517 R-7 CONTRACT NUMBER 62408					



e:\Dept\Structure\20099 100 04-retwall\ILL 100 104\RAMPH\CONFILES\08 10+ 15\HPhandgn
04-Feb-2008 09:34

DESIGNED	CMF
CHECKED	LTX
DRAWN	DPW
CHECKED	JMM

MINIMUM BAR LAPS
*4 BARS = 1'-8"

REVISIONS	
NAME	DATE

**RETAINING WALL RAMP H
DETAILS**
I-90/94 KENNEDY EXPRESSWAY
(HUBBARDS CAVE TO I-290)
SECT.(202.6 - 2P, ETC, 1415 & 1517) R-7
STATION 27+17, LT. 20.5' TO 24+70, LT. 22'
(RAMP F BASELINE)
COOK COUNTY
STRUCTURE NUMBER 016-WB08

DLZ 85 W. Algonquin Rd. Ste. 220
Arlington Heights IL 60005

11:35:56 AM
D:\60X94-SHT-AS-BUILT-130.dgn



USER NAME = v1janachone	DESIGNED - JTF	REVISED -
PLOT SCALE = NTS	CHECKED - WJC	REVISED -
PLOT DATE = 3/6/2020	DRAWN - JTF	REVISED -
	CHECKED - WJC	REVISED -

**STATE OF ILLINOIS
DEPARTMENT OF TRANSPORTATION**

EXISTING RECORD DRAWINGS

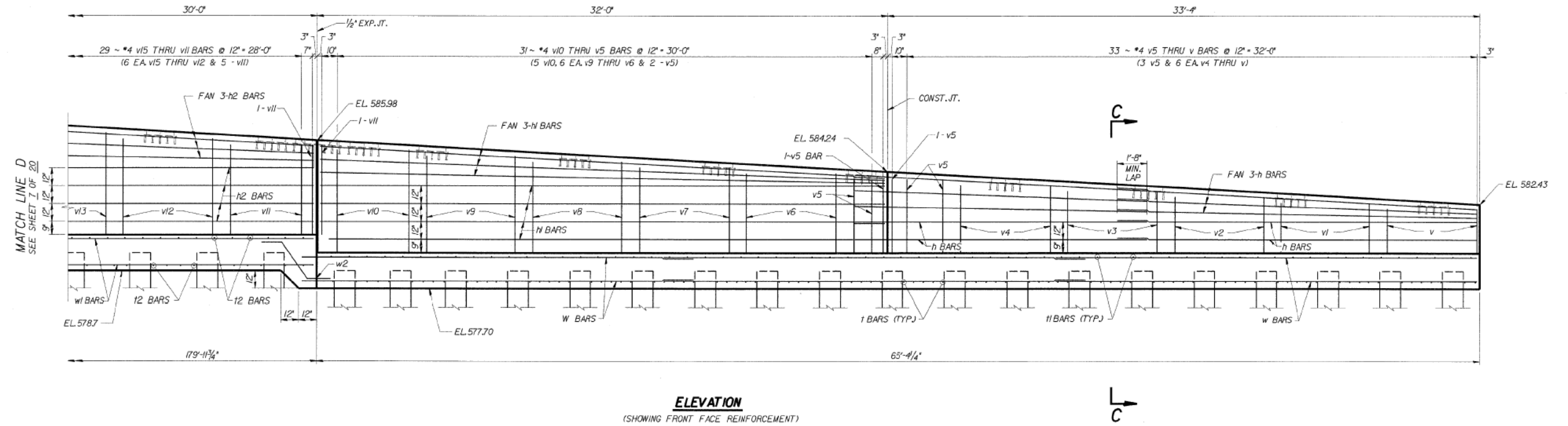
SHEET NO. AB-130 OF AB-145 SHEETS

F.A.I. RTE.	SECTION	COUNTY	TOTAL SHEETS	SHEET NO.
90/94	2014-015R&B-R	COOK	825	810
CONTRACT NO.			60X94	
ILLINOIS FED. AID PROJECT				

FOR INFORMATION ONLY

STATE OF ILLINOIS
DEPARTMENT OF TRANSPORTATION

ROUTE NO.	SECTION	COUNTY	TOTAL SHEETS	SHEET NO.	SHEET NO. 8 20 SHEETS
FAP 9054	*	COOK	246	159	
FED. ROAD DIST. # 1		ILLINOIS	FED. AID PROJECT		
* SECT. 202.6 - 2P, ETC, 145 & 151(7) R-7					
CONTRACT NUMBER 62408					



ELEVATION
(SHOWING FRONT FACE REINFORCEMENT)

04-FAP-2005 09-25 \\dep\structures\00299 06 04 -retwall\111_190_19A\CAMPH\DCNFILES\05-10-16-R10plan.dgn

DESIGNED	CMP
CHECKED	LTX
DRAWN	DPW
CHECKED	JMM

MINIMUM BAR LAPS
#4 BARS - 1'-8"

DLZ
DLZ Illinois, Inc.
85 W. Algonquin Rd. Ste. 220
Arlington Heights IL 60005

REVISIONS	
NAME	DATE

**RETAINING WALL RAMP H
DETAILS**
I-90/94 KENNEDY EXPRESSWAY
(HUBBARDS CAVE TO I-290)
SECT.(202.6 - 2P, ETC, 145 & 151(7) R-7
STATION 27-17, LT.20.5' TO 24-70, LT. 22'
(RAMP F BASELINE)
COOK COUNTY
STRUCTURE NUMBER 016-W80B

11:36:05 AM
D:\60X94-SHT-AS-BUILT-131.dgn



USER NAME = v1janachone	DESIGNED - JTF	REVISED -
PLOT SCALE = NTS	CHECKED - WJC	REVISED -
PLOT DATE = 3/6/2020	DRAWN - JTF	REVISED -
	CHECKED - WJC	REVISED -

**STATE OF ILLINOIS
DEPARTMENT OF TRANSPORTATION**

EXISTING RECORD DRAWINGS

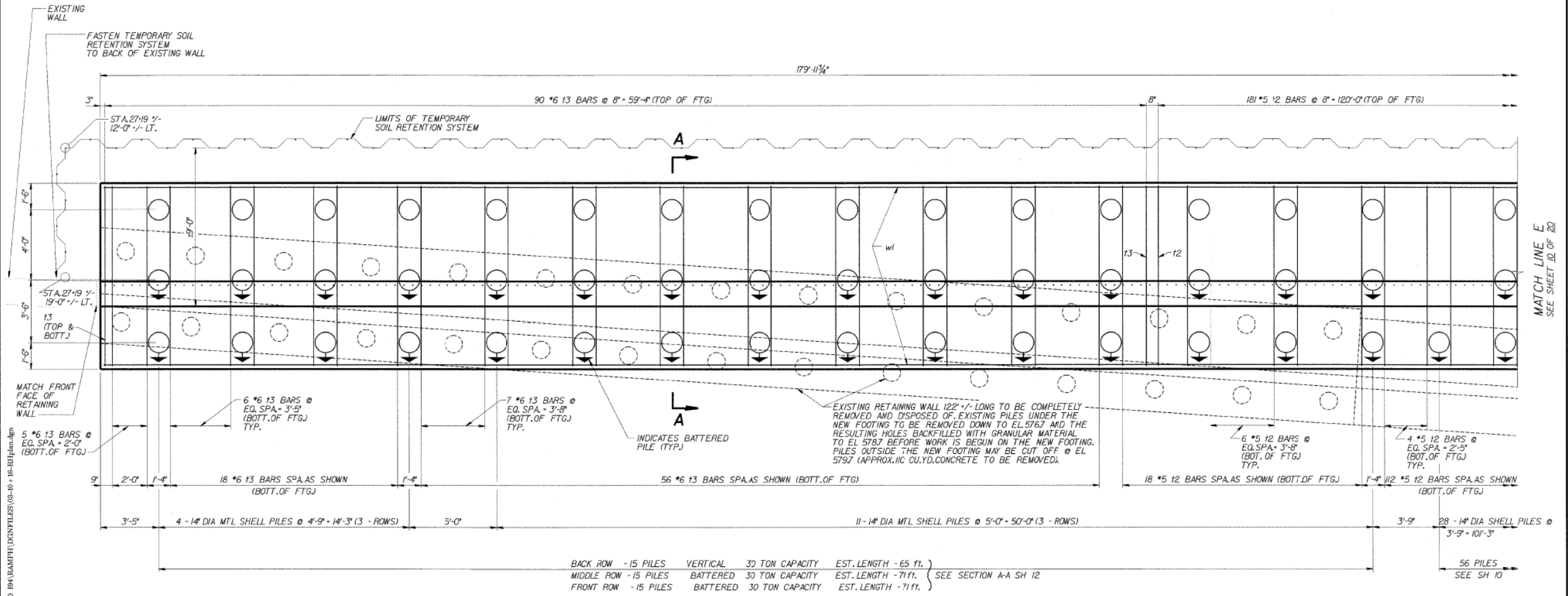
SHEET NO. AB-131 OF AB-145 SHEETS

F.A.I. RTE.	SECTION	COUNTY	TOTAL SHEETS	SHEET NO.
90/94	2014-015R&B-R	COOK	825	811
CONTRACT NO.			60X94	
ILLINOIS FED. AID PROJECT				

FOR INFORMATION ONLY

STATE OF ILLINOIS
DEPARTMENT OF TRANSPORTATION

ROUTE NO.	SECTION	COUNTY	TOTAL SHEETS	SHEET NO.	SHEET NO. 9
FAR 904	*	COOK	246	160	20 SHEETS
FED. ROAD DIST. # 1		ILLINOIS	FED. AID PROJECT		
* SECT. 081.6 - 2P, ETC. 1415 & 1517 R-7 CONTRACT NUMBER 62408					



PLAN

MINIMUM BAR LAPS
*4 BARS - 1'-8"
*6 BARS - 6'-6"

DESIGNED	CMF
CHECKED	LTX
DRAWN	DPW
CHECKED	JMM

REVISIONS	
NAME	DATE

**RETAINING WALL RAMP H
DETAILS**
I-90/94 KENNEDY EXPRESSWAY
(HUBBARDS CAVE TO I-290)
SECT. (202.6 - 2P, ETC. 1415 & 1517) R-7
STATION 27+17, LT. 20.5' TO 24+70, LT. 22'
(RAMP F BASELINE)
COOK COUNTY
STRUCTURE NUMBER 016-W808

DLZ 85 W. Algonquin Rd. Ste. 220
Arlington Heights IL 60005

11:36:14 AM
D:\60X94-SHT-AS-BUILT-132.dgn



USER NAME = v1janachone	DESIGNED - JTF	REVISED -
PLOT SCALE = NTS	CHECKED - WJC	REVISED -
PLOT DATE = 3/6/2020	DRAWN - JTF	REVISED -
	CHECKED - WJC	REVISED -

STATE OF ILLINOIS
DEPARTMENT OF TRANSPORTATION

EXISTING RECORD DRAWINGS

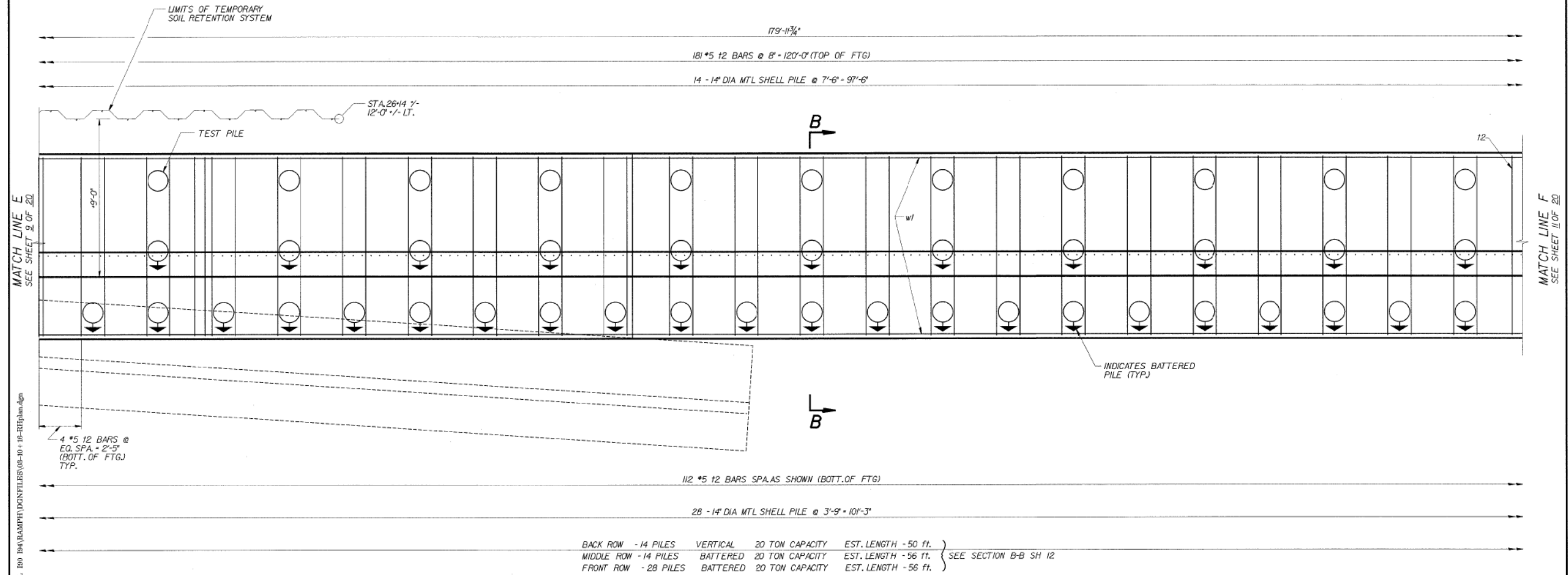
SHEET NO. AB-132 OF AB-145 SHEETS

F.A.I. RTE.	SECTION	COUNTY	TOTAL SHEETS	SHEET NO.
90/94	2014-015R&B-R	COOK	825	812
CONTRACT NO.			60X94	
ILLINOIS FED. AID PROJECT				

FOR INFORMATION ONLY

STATE OF ILLINOIS
DEPARTMENT OF TRANSPORTATION

ROUTE NO.	SECTION	COUNTY	TOTAL SHEETS	SHEET NO.	SHEET NO. 10
141	*	COOK	246	161	20 SHEETS
FED. ROAD DIST. # 1		ILLINOIS	FED. AID PROJECT		
*SECT. (202.6 - 2P, ETC, 1415 & 1517) R-7					
CONTRACT NUMBER 62408					



MATCH LINE E
SEE SHEET 9 OF 20

MATCH LINE F
SEE SHEET 17 OF 20

04-Feb-2009 09:35
s:\Dept\Structures\30099 100 94-newwall\LL 100 104\DWG\CONFILES\08-10-15-015plan.dgn

DESIGNED	CMP
CHECKED	LTX
DRAWN	DPW
CHECKED	JMM

MINIMUM BAR LAPS
*4 BARS - 1'-8"
*6 BARS - 6'-6"

DLZ 85 W. Algonquin Rd. Ste. 220
Arlington Heights IL 60005

REVISIONS	
NAME	DATE

**RETAINING WALL RAMP H
DETAILS**
I-90/94 KENNEDY EXPRESSWAY
(HUBBARDS CAVE TO I-290)
SECT. (202.6 - 2P, ETC, 1415 & 1517) R-7
STATION 27+17, LT. 20.5' TO 24+70, LT. 22'
(RAMP F BASELINE)
COOK COUNTY
STRUCTURE NUMBER 016-W808

11:36:23 AM
D:\60X94-SHT-AS-BUILT-133.dgn



USER NAME = v1janachone	DESIGNED - JTF	REVISED -
PLOT SCALE = NTS	CHECKED - WJC	REVISED -
PLOT DATE = 3/6/2020	DRAWN - JTF	REVISED -
	CHECKED - WJC	REVISED -

**STATE OF ILLINOIS
DEPARTMENT OF TRANSPORTATION**

EXISTING RECORD DRAWINGS

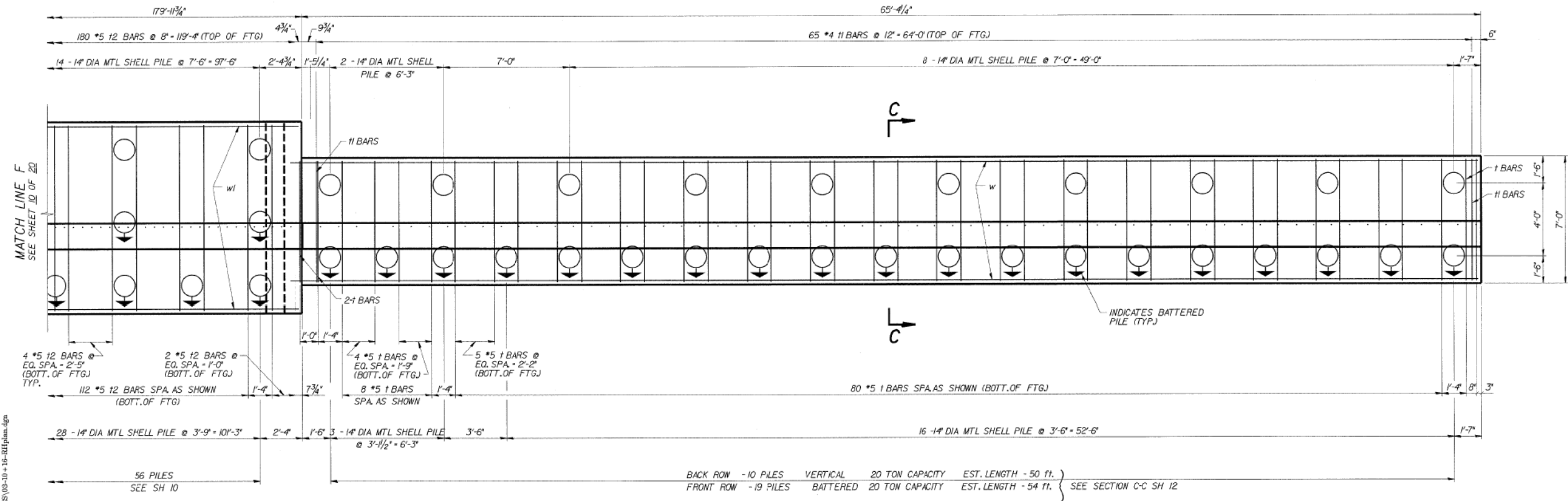
SHEET NO. AB-133 OF AB-145 SHEETS

F.A.I. RTE.	SECTION	COUNTY	TOTAL SHEETS	SHEET NO.
90/94	2014-015R&B-R	COOK	825	813
CONTRACT NO.			60X94	
ILLINOIS FED. AID PROJECT				

FOR INFORMATION ONLY

STATE OF ILLINOIS
DEPARTMENT OF TRANSPORTATION

ROUTE NO.	SECTION	COUNTY	TOTAL SHEETS	SHEET NO.	SHEET NO. 11
FAP 9094	*	COOK	246	162	20 SHEETS
FED. ROAD DIST. # 1		ILLINOIS	FED. AID PROJECT		
*SECT. 102.6 - 1P, ETC, 145 & 151D R-7 CONTRACT NUMBER 62408					



PLAN

a:\Dept\Structures\301099 150 94-newall\ILL 150 154\RAMPH\DWG\FILES\03-10-16-RHplan.dgn
 04-Feb-2020 09:35

DESIGNED	CMP
CHECKED	LTX
DRAWN	DPW
CHECKED	JMM

MINIMUM BAR LAPS
#4 BARS - 1'-8"

DLZ 85 W. Algonquin Rd. Ste. 220
Arlington Heights IL 60005

REVISIONS	
NAME	DATE

**RETAINING WALL RAMP H
DETAILS**
 I-90/94 KENNEDY EXPRESSWAY
 (HUBBARDS CAVE TO I-290,
 SECT. 102.6 - 2P, ETC, 145 & 151) R-7
 STATION 27+7.1, LT. 20.5' TO 24+7.0, LT. 22'
 (RAMP F BASELINE)
 COOK COUNTY
 STRUCTURE NUMBER 016-W808

11:36:31 AM D:\60X94-SHT-AS-BUILT-134.dgn



USER NAME = v1janachone	DESIGNED - JTF	REVISED -
PLOT SCALE = NTS	CHECKED - WJC	REVISED -
PLOT DATE = 3/6/2020	DRAWN - JTF	REVISED -
	CHECKED - WJC	REVISED -

**STATE OF ILLINOIS
DEPARTMENT OF TRANSPORTATION**

EXISTING RECORD DRAWINGS

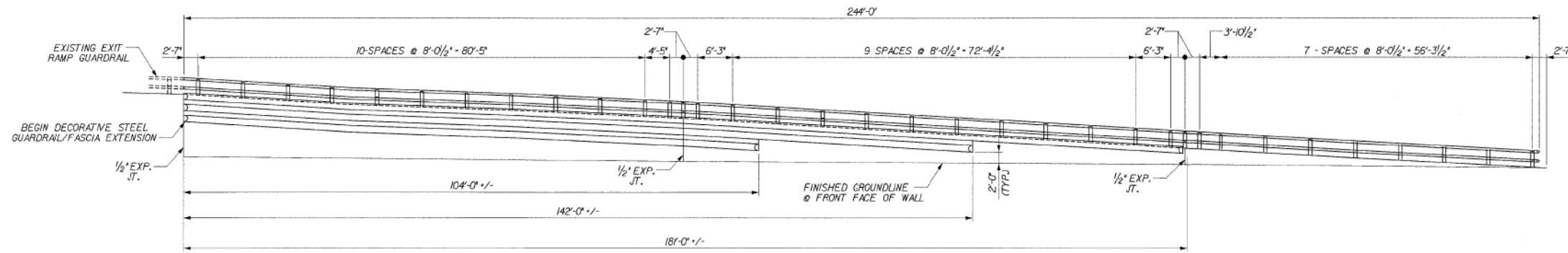
SHEET NO. AB-134 OF AB-145 SHEETS

F.A.I. RTE.	SECTION	COUNTY	TOTAL SHEETS	SHEET NO.
90/94	2014-015R&B-R	COOK	825	814
CONTRACT NO.			60X94	
ILLINOIS FED. AID PROJECT				

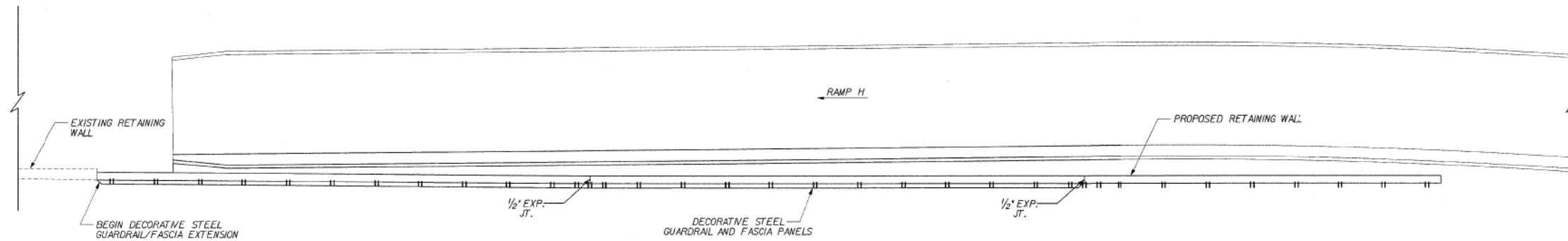
FOR INFORMATION ONLY

STATE OF ILLINOIS
DEPARTMENT OF TRANSPORTATION

ROUTE NO.	SECTION	COUNTY	TOTAL SHEETS	SHEET NO.	SHEET NO. 13
FAP 9094	*	COOK	246	16A	20 SHEETS
FED. ROAD DIST. # 1		ILLINOIS	FED. AID PROJECT		
* SECT. 085.6 - 2P, ETC, 1415 & 1517 R-7					
CONTRACT NUMBER 62408					



ELEVATION
(SHOWING FRONT FACE OF WALL)



PLAN

s:\Dpt\Structures\90099 100 94-retwall\111 100 104\RAMPH\CONTRILIBS\15-HAILINGOPLAN&BELBY.dgn

DESIGNED	DPW
CHECKED	ASP
DRAWN	BEM
CHECKED	ASP

DLZ 85 W. Algonquin Rd. Ste. 220
Arlington Heights IL 60005

REVISIONS	
NAME	DATE

**RETAINING WALL RAMP H
RAILING PLAN & ELEVATION**
I-90/94 KENNEDY EXPRESSWAY
(HUBBARDS CAVE TO I-290)
SECT. (2026 - 2P, ETC, 1415 & 1517) R-7
STATION 27+17, LT. 20.5' TO 24+70, LT. 22'
(RAMP F BASELINE)
COOK COUNTY
STRUCTURE NUMBER 016-W808

11:36:48 AM
D:\60X94-SHT-AS-BUILT-136.dgn



USER NAME = vjjanachone	DESIGNED - JTF	REVISED -
PLOT SCALE = NTS	CHECKED - WJC	REVISED -
PLOT DATE = 3/6/2020	DRAWN - JTF	REVISED -
	CHECKED - WJC	REVISED -

STATE OF ILLINOIS
DEPARTMENT OF TRANSPORTATION

EXISTING RECORD DRAWINGS

SHEET NO. AB-136 OF AB-145 SHEETS

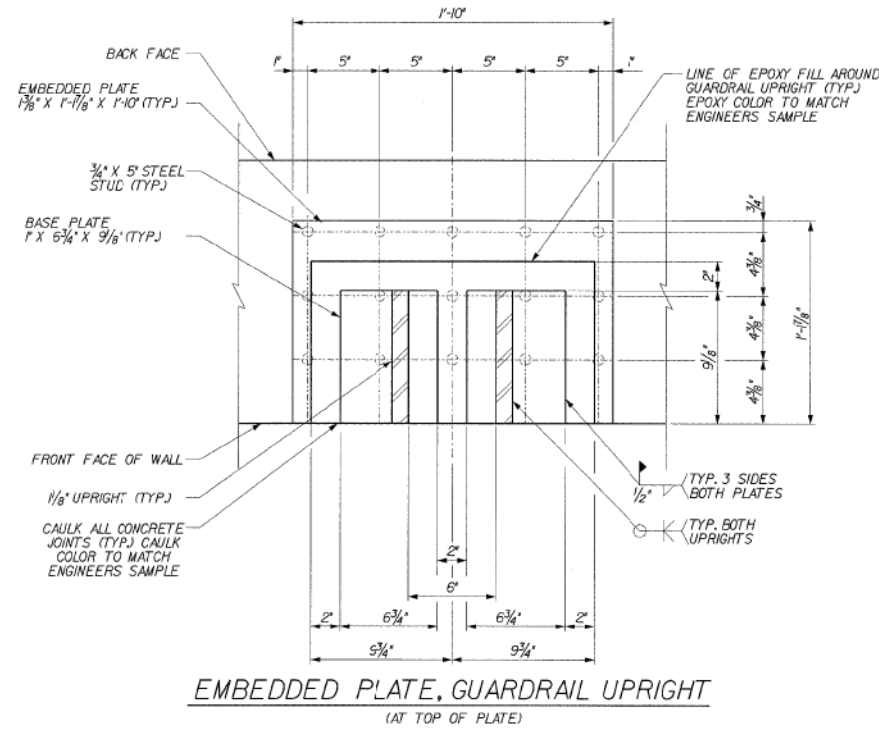
F.A.I. RTE.	SECTION	COUNTY	TOTAL SHEETS	SHEET NO.
90/94	2014-015R&B-R	COOK	825	816
CONTRACT NO.			60X94	
ILLINOIS FED. AID PROJECT				

FOR INFORMATION ONLY

STATE OF ILLINOIS
DEPARTMENT OF TRANSPORTATION

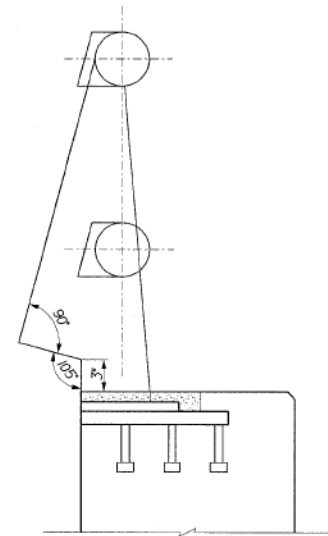
ROUTE NO.	SECTION	COUNTY	TOTAL SHEETS	SHEET NO.
PAP 9094	*	COOK	246	165
PRD. ROAD DIST. # 1 ILLINOIS FED. AID PROJECT				
CONTRACT NUMBER 62408				

SHEET NO. 14
20 SHEETS

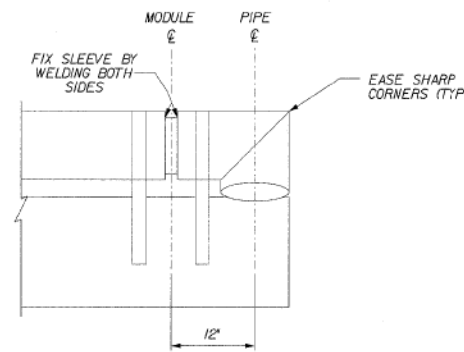


EMBEDDED PLATE, GUARDRAIL UPRIGHT
(AT TOP OF PLATE)

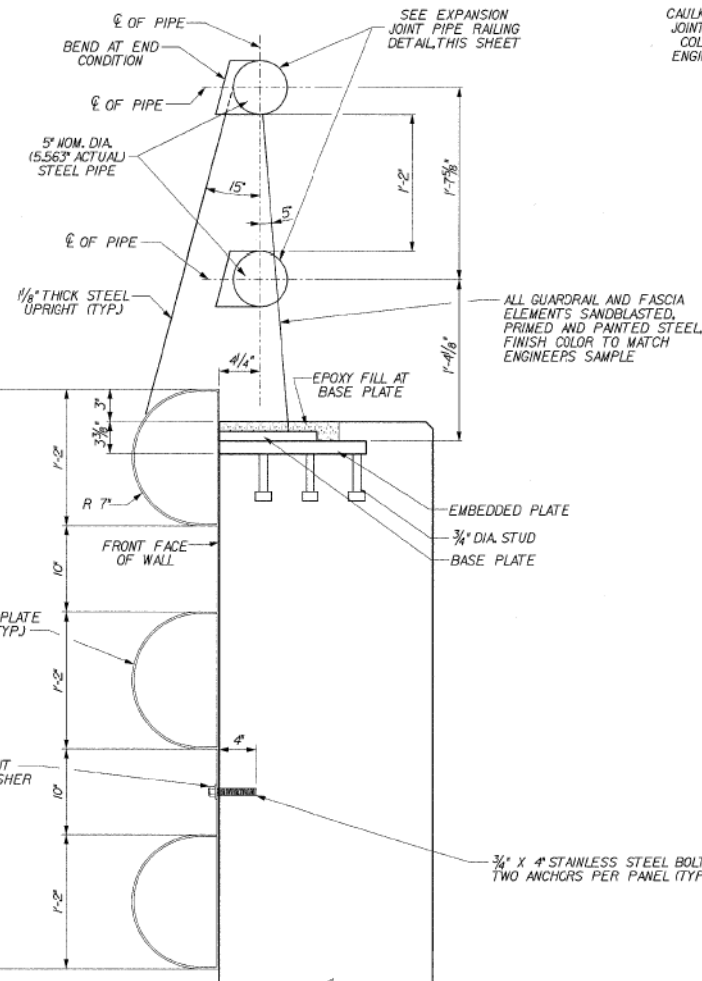
NOTE:
THE CONTRACTOR IS TO FURNISH MATERIAL, FABRICATE AND INSTALL EMBEDDED PLATES. THE DECORATIVE STEEL GUARDRAIL AND FASCIA IS TO BE SUPPLIED BY OTHERS AND INSTALLED BY THE CONTRACTOR.



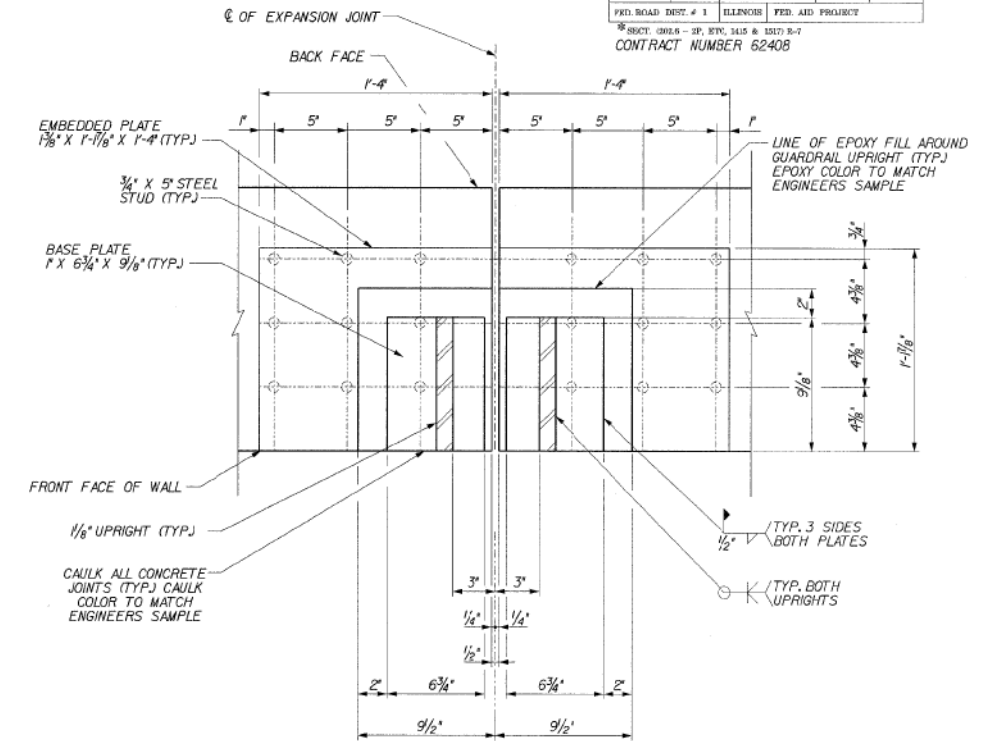
ELEVATION W/OUT DECORATIVE FASCIA
(SEE ELEVATION W/DECORATIVE FASCIA FOR DIMENSIONS)



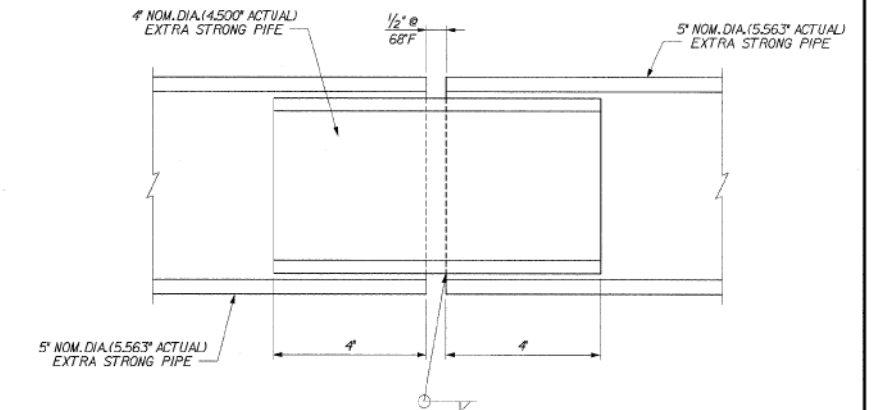
GUARDRAIL END
CONDITION PLAN



ELEVATION W/DECORATIVE FASCIA



EMBEDDED PLATE,
GUARDRAIL UPRIGHT AT
EXPANSION JOINT
(AT TOP OF PLATE)



EXPANSION JOINT PIPE RAILING
(SHOWN ALONG ϕ OF PIPE)

04-Feb-2020 09:36 s:\Dpt\Structures\01099 100 04-retwall\ILL 100 104\RAMPH\CONTRILES\14-RailingDetail.dgn

DESIGNED	DPW
CHECKED	ASP
DRAWN	MJS
CHECKED	MBJ

REVISIONS	
NAME	DATE

RETAINING WALL RAMP H
RAILING SYSTEM DETAIL
I-90/94 KENNEDY EXPRESSWAY
(HUBBARDS CAVE TO I-290)
SECT. (202.6 - 2P, ETC, 1415 & 1517) R-7
STATION 27+17, LT. 20.5' TO 24+70, LT. 22'
(RAMP F BASELINE)
COOK COUNTY
STRUCTURE NUMBER 016-W808

DLZ 85 W. Algonquin Rd. Ste. 220
Arlington Heights IL 60005

11:36:57 AM
D:\60X94-SHT-AS-BUILT-137.dgn



USER NAME = vjanachone	DESIGNED - JTF	REVISED -
PLOT SCALE = NTS	CHECKED - WJC	REVISED -
PLOT DATE = 3/6/2020	DRAWN - JTF	REVISED -
	CHECKED - WJC	REVISED -

STATE OF ILLINOIS
DEPARTMENT OF TRANSPORTATION

EXISTING RECORD DRAWINGS

SHEET NO. AB-137 OF AB-145 SHEETS

F.A.I. RTE.	SECTION	COUNTY	TOTAL SHEETS	SHEET NO.
90/94	2014-015R&B-R	COOK	825	817
ILLINOIS FED. AID PROJECT			CONTRACT NO.	60X94

FOR INFORMATION ONLY

STATE OF ILLINOIS
DEPARTMENT OF TRANSPORTATION

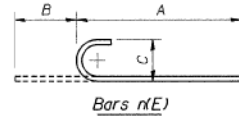
ROUTE NO.	SECTION	COUNTY	TOTAL SHEETS	SHEET NO.	SHEET NO. 15
FAP 9094	*	COOK	246	166	20 SHEETS
FED. ROAD DIST. # 1		ILLINOIS	FED. AID PROJECT		
* SECT. 202.6 - 2P, ETC, 1415 & 1511 R-7 CONTRACT NUMBER 62408					

REINFORCEMENT SCHEDULE

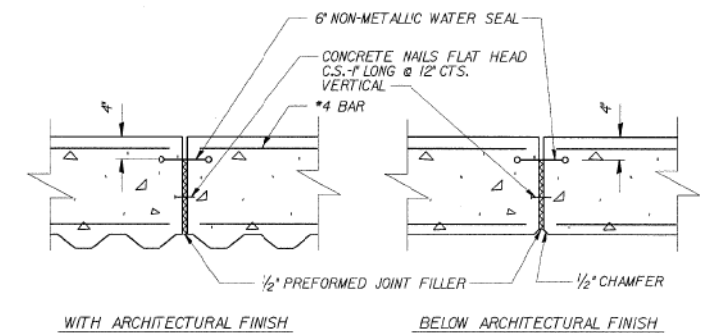
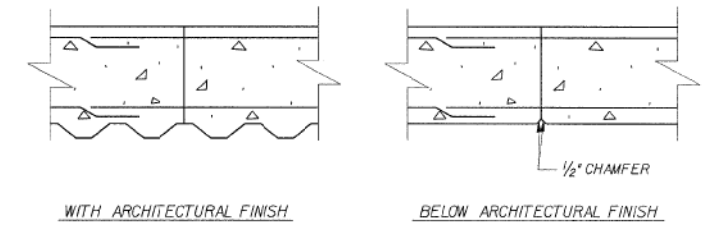
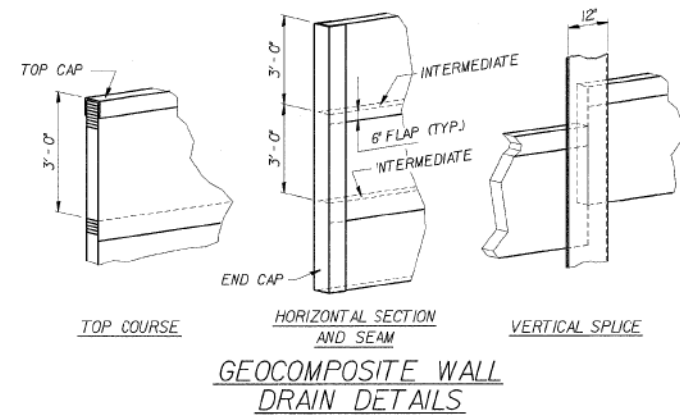
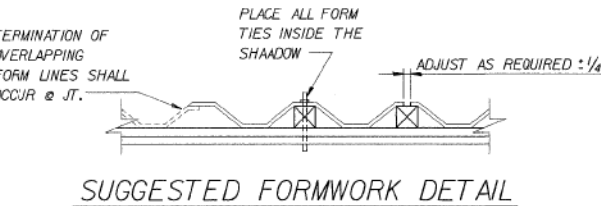
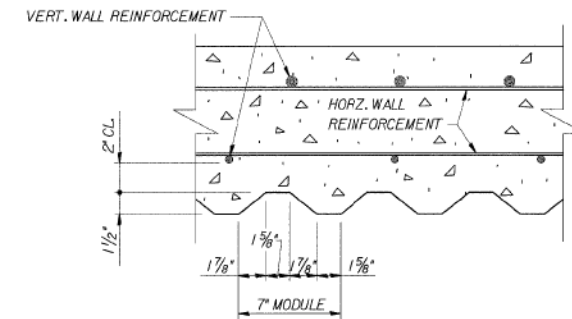
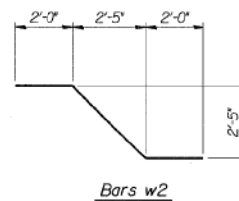
BAR	NO.	SIZE	LENGTH	SHAPE	BAR	NO.	SIZE	LENGTH	SHAPE
v	6	#4	2'-5"		v56	6	#6	7'-1"	
v1	6	#4	2'-9"		v57	6	#6	7'-5"	
v2	6	#4	3'-1"		v58	6	#6	7'-10"	
v3	6	#4	3'-5"		v59	6	#6	8'-2"	
v4	6	#4	3'-9"		v60	6	#6	8'-6"	
v5	7	#4	4'-1"		v61	6	#6	8'-10"	
v6	6	#4	4'-5"		v62	6	#6	9'-3"	
v7	6	#4	4'-9"		v63	6	#6	9'-7"	
v8	6	#4	5'-1"		v64	6	#6	9'-11"	
v9	6	#4	5'-5"		v65	6	#6	10'-3"	
v10	5	#4	5'-9"		v66	6	#6	10'-8"	
v11	7	#4	5'-0"		v67	6	#6	11'-0"	
v12	6	#4	5'-4"		v68	6	#6	11'-3"	
v13	6	#4	5'-8"		v69	6	#6	11'-7"	
v14	6	#4	6'-0"		v70	6	#6	11'-10"	
v15	7	#4	6'-5"		v71	6	#6	12'-1"	
v16	6	#4	6'-9"		v72	6	#5	12'-4"	
v17	6	#4	7'-1"		v73	11	#5	12'-5"	
v18	6	#4	7'-5"		v74	11	#5	12'-7"	
v19	6	#4	7'-10"		v75	11	#5	12'-10"	
v20	7	#4	8'-2"		v76	11	#5	13'-0"	
v21	6	#4	8'-6"		v77	10	#5	13'-2"	
v22	6	#4	8'-10"		v78	11	#5	13'-5"	
v23	6	#4	9'-3"		v79	11	#5	13'-9"	
v24	6	#4	9'-7"		v80	11	#5	14'-1"	
v25	7	#4	9'-11"		v81	11	#5	14'-5"	
v26	6	#4	10'-4"		v82	11	#5	14'-9"	
v27	6	#4	10'-7"		v83	3	#5	15'-1"	
v28	6	#4	10'-10"						
v29	6	#4	11'-2"		h	20	#4	17'-5"	
v30	7	#4	11'-5"		h1	14	#4	31'-8"	
v31	6	#4	11'-9"		h2	84	#4	31'-9"	
v32	6	#4	11'-11"		h3	52	#4	29'-8"	
v33	6	#4	12'-1"						
v34	6	#4	12'-4"		n(E)	65	#6	4'-9"	
v35	7	#4	12'-7"		n(E)	120	#6	5'-2"	
v36	6	#4	12'-9"		n2(E)	120	#6	8'-2"	
v37	6	#4	13'-1"		n3(E)	120	#7	8'-4"	
v38	6	#4	13'-6"						
v39	6	#4	13'-10"		t	92	#5	6'-8"	
v40	7	#4	14'-3"		11	65	#4	6'-8"	
v41	6	#5	3'-0"		12	342	#5	10'-2"	
v42	6	#5	3'-4"		13	170	#6	10'-2"	
v43	6	#5	3'-8"						
v44	6	#5	4'-0"		w	45	#4	23'-1"	
v45	6	#5	4'-4"		w1	132	#4	31'-5"	
v46	6	#5	4'-8"		w2	8	#4	7'-5"	
v47	6	#5	5'-0"						
v48	6	#5	5'-4"						
v49	6	#5	5'-8"						
v50	6	#5	6'-0"						
v51	5	#5	6'-3"						
v52	7	#6	5'-8"						
v53	6	#6	6'-0"						
v54	6	#6	6'-5"						
v55	6	#6	6'-9"						

REINFORCEMENT BARS DESIGNATED (E) SHALL BE EPOXY COATED

BAR BENDING DIAGRAMS



Bar	A		B		C	
	Ft.	In.	Ft.	In.	Ft.	In.
n(E)	4	1	0	8	0	6
n(E)	4	6	0	8	0	6
n2(E)	7	6	0	8	0	6
n3(E)	7	6	0	10	0	7
v41	2	5	0	7	0	5
v42	2	9	0	7	0	5
v43	3	1	0	7	0	5
v44	3	5	0	7	0	5
v45	3	9	0	7	0	5
v46	4	1	0	7	0	5
v47	4	5	0	7	0	5
v48	4	9	0	7	0	5
v49	5	1	0	7	0	5
v50	5	5	0	7	0	5
v51	5	8	0	7	0	5
v52	5	0	0	8	0	6
v53	5	4	0	8	0	6
v54	5	9	0	8	0	6
v55	6	1	0	8	0	6
v56	6	5	0	8	0	6
v57	6	9	0	8	0	6
v58	7	2	0	8	0	6
v59	7	6	0	8	0	6
v60	7	10	0	8	0	6
v61	8	2	0	8	0	6
v62	8	7	0	8	0	6
v63	8	11	0	8	0	6
v64	9	3	0	8	0	6
v65	9	7	0	8	0	6
v66	10	0	0	8	0	6
v67	10	4	0	8	0	6
v68	10	7	0	8	0	6
v69	10	11	0	8	0	6
v70	11	2	0	8	0	6
v71	11	5	0	8	0	6
v72	11	9	0	7	0	5
v73	11	10	0	7	0	5
v74	12	0	0	7	0	5
v75	12	3	0	7	0	5
v76	12	5	0	7	0	5
v77	12	7	0	7	0	5
v78	12	10	0	7	0	5
v79	13	2	0	7	0	5
v80	13	6	0	7	0	5
v81	13	10	0	7	0	5
v82	14	2	0	7	0	5
v83	14	6	0	7	0	5



NOTE: 6" NON-METALLIC WATER SEAL AND PREFORMED JOINT SEALER SHALL BE INCLUDED IN THE COST OF CONCRETE STRUCTURES

RETAINING WALL RAMP H DETAILS

1-90/94 KENNEDY EXPRESSWAY
(HUBBARDS CAVE TO I-290)
SECT. (202.6 - 2P, ETC, 1415 & 1511) R-7
STATION 27+17. LT. 20.5' TO 24+70. LT. 22'
(RAMP F BASELINE)
COOK COUNTY
STRUCTURE NUMBER 016-W808

REVISIONS	
NAME	DATE

DESIGNED	CMF
CHECKED	LTX
DRAWN	DPW
CHECKED	JMM

USER NAME = v1janachione	DESIGNED - JTF	REVISED -
PLOT SCALE = NTS	CHECKED - WJC	REVISED -
PLOT DATE = 3/6/2020	DRAWN - JTF	REVISED -
	CHECKED - WJC	REVISED -

STATE OF ILLINOIS
DEPARTMENT OF TRANSPORTATION

EXISTING RECORD DRAWINGS

SHEET NO. AB-138 OF AB-145 SHEETS

F.A.I. RTE.	SECTION	COUNTY	TOTAL SHEETS	SHEET NO.
90/94	2014-015R&B-R	COOK	825	818
CONTRACT NO.			60X94	
ILLINOIS FED. AID PROJECT				

FOR INFORMATION ONLY

DRAWER (3A)

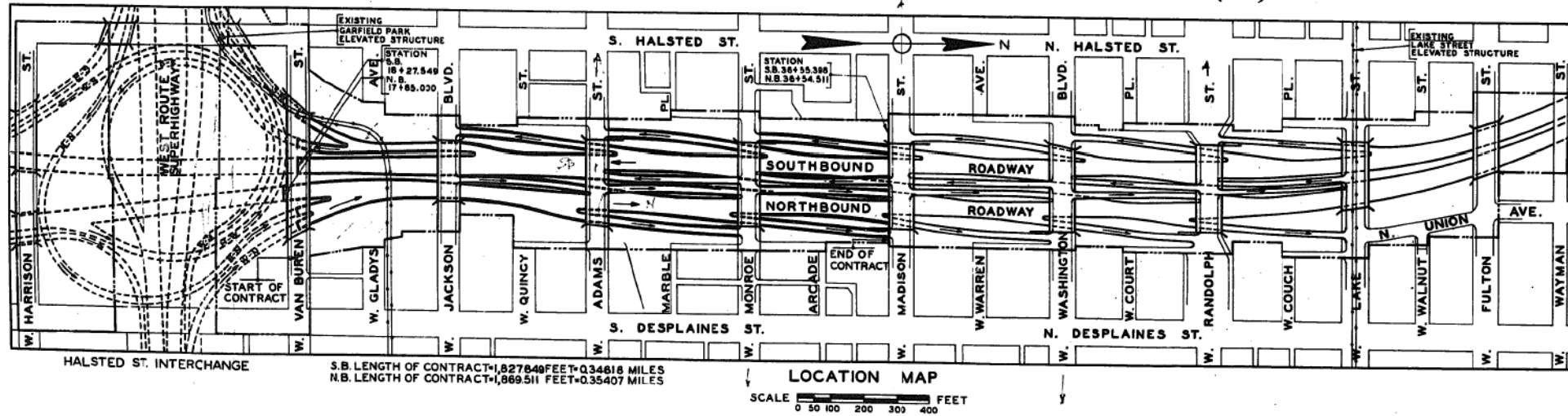
STATE OF ILLINOIS
CITY OF CHICAGO
DEPARTMENT OF PUBLIC WORKS
BUREAU OF ENGINEERING

F.A.I.2	0101.6-2P	COOK	108	1
PROJ. NO. I-02-2(50)				

NORTHWEST ROUTE SUPERHIGHWAY

PLANS FOR
GRADING AND PAVING
W. VAN BUREN STREET TO W. MADISON STREET
SECTION 0101.6-2P

F.A.I. ROUTE NO.2 PROJECT I-02-2 (50)



CITY OF CHICAGO
DEPARTMENT OF PUBLIC WORKS
BUREAU OF ENGINEERING
DATE MAY 2, 1957

APPROVED *Edward P. Reiter*
CHIEF SUBWAY AND SUPERHIGHWAY ENGINEER

APPROVED *W.E. Rammus*
ASST. CHIEF ENGINEER

APPROVED *Deak Van Dyke*
CHIEF ENGINEER

APPROVED *Edmund*
COMMISSIONER

THE DEPARTMENT OF
PUBLIC WORKS AND BUILDINGS
DIVISION OF HIGHWAYS

APPROVED [REDACTED] 19 [REDACTED]
CHIEF HIGHWAY ENGINEER

APPROVED [REDACTED] 19 [REDACTED]

DEPARTMENT OF COMMERCE
BUREAU OF PUBLIC ROADS

APPROVED [REDACTED] 19 [REDACTED]
DISTRICT ENGINEER DATE

APRIL 1957
SHEET NO. G-1 OF 108 SHEETS

APPROVED AS TO SEWER ALTERATIONS AND ADDITIONS:-
John J. Schabauer
CHIEF ENGINEER OF SEWERS
Thomas J. Haus
DEPUTY FOR SEWERS

11:37:22 AM
D:\60X94-SHT-AS-BUILT-140.dgn



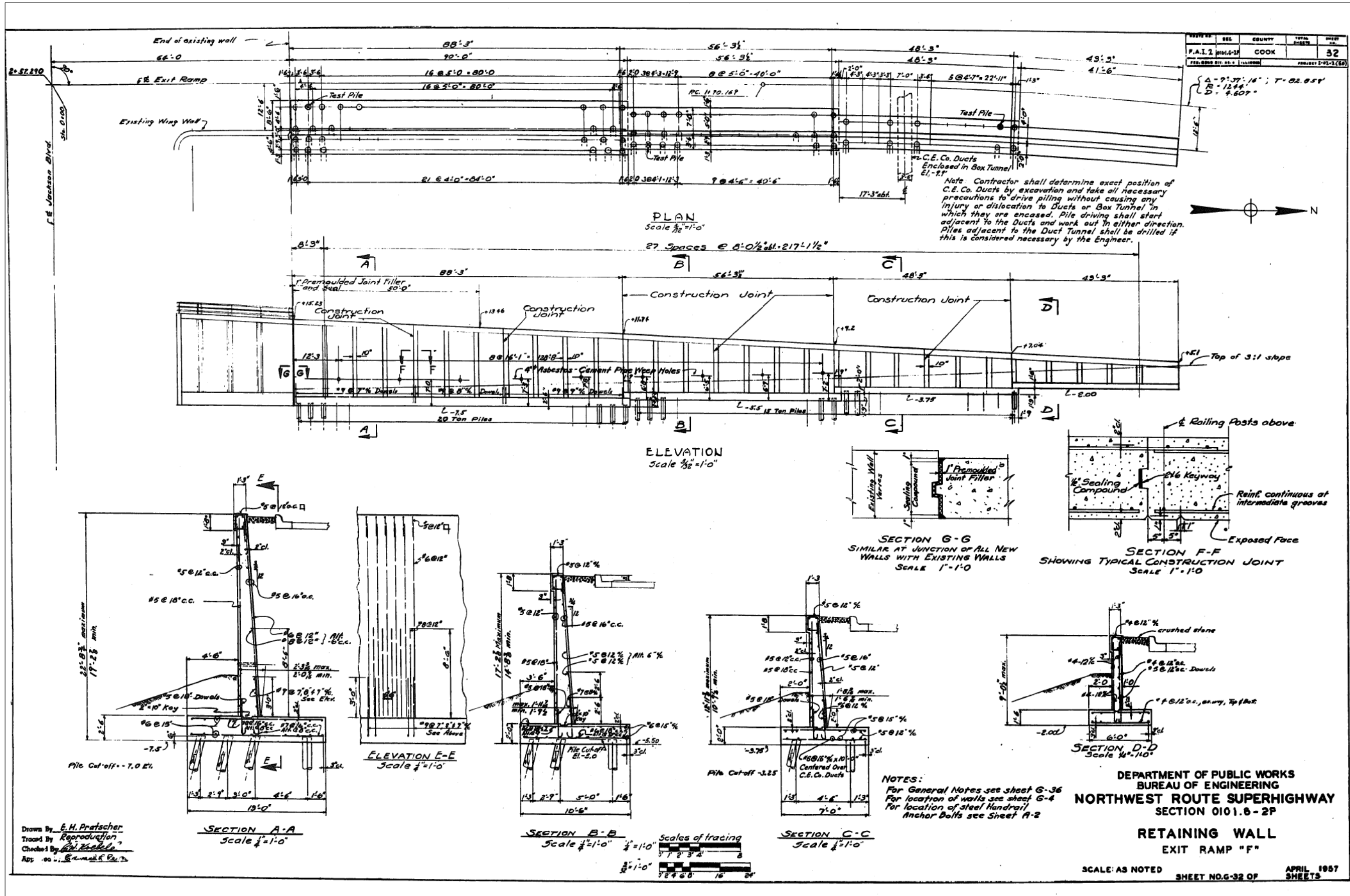
USER NAME = v1janachone	DESIGNED - JTF	REVISED -
PLOT SCALE = NTS	CHECKED - WJC	REVISED -
PLOT DATE = 3/6/2020	DRAWN - JTF	REVISED -
	CHECKED - WJC	REVISED -

STATE OF ILLINOIS
DEPARTMENT OF TRANSPORTATION

EXISTING RECORD DRAWINGS
SHEET NO. AB-140 OF AB-145 SHEETS

F.A.I. RTE.	SECTION	COUNTY	TOTAL SHEETS	SHEET NO.
90/94	2014-015R&B-R	COOK	825	820
CONTRACT NO.			60X94	
ILLINOIS FED. AID PROJECT				

FOR INFORMATION ONLY



Drawn By: E.H. Pratscher
 Traced By: Reproduction
 Checked By: [Signature]
 App. - [Signature]

DEPARTMENT OF PUBLIC WORKS
 BUREAU OF ENGINEERING
 NORTHWEST ROUTE SUPERHIGHWAY
 SECTION 0101.6-2P

RETAINING WALL
 EXIT RAMP "F"

SCALE: AS NOTED
 SHEET NO. G-32 OF 32 SHEETS
 APRIL 1957

STATE OF ILLINOIS
 DEPARTMENT OF TRANSPORTATION

EXISTING RECORD DRAWINGS

SHEET NO. AB-141 OF AB-145 SHEETS

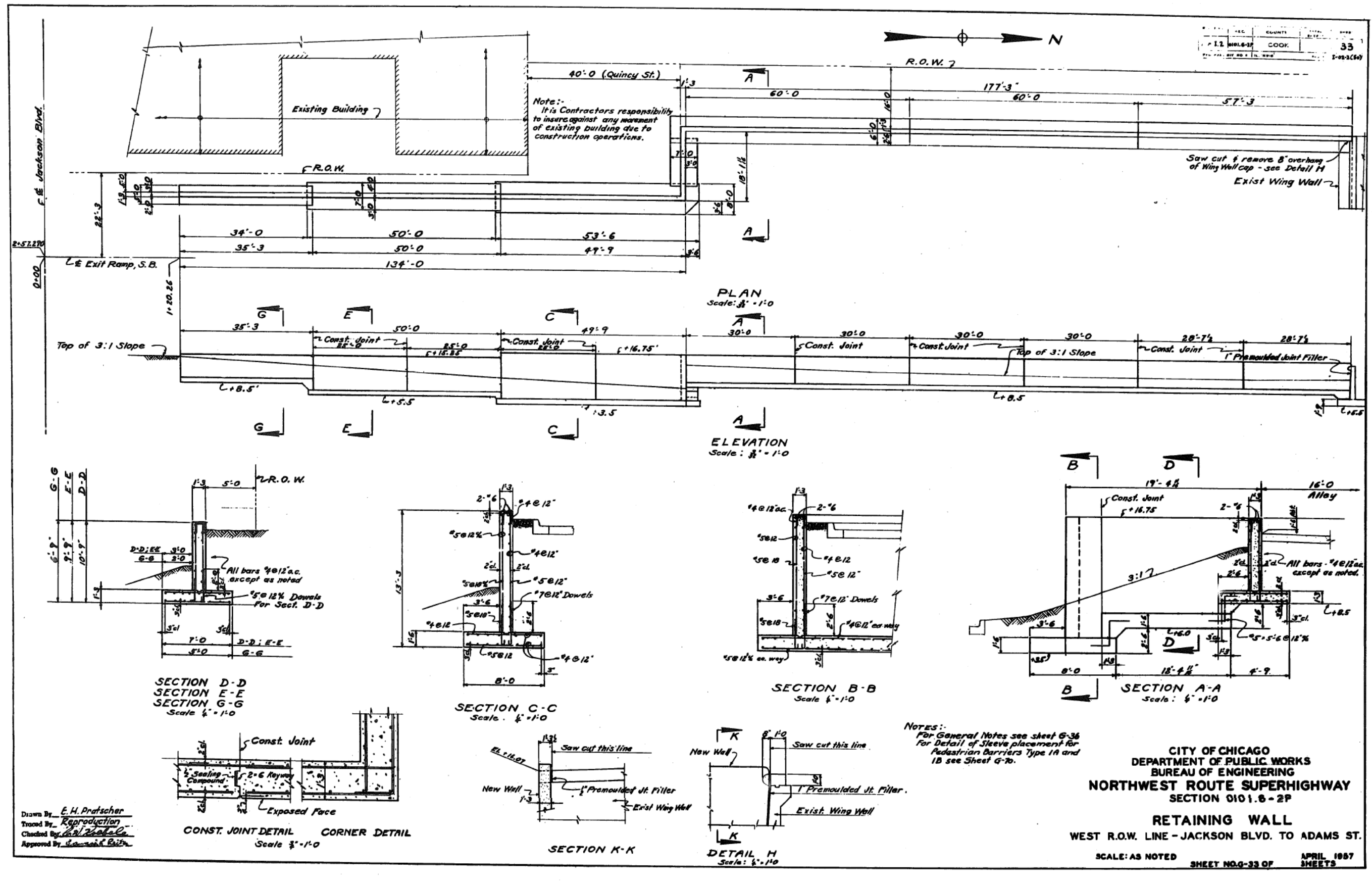
USER NAME = v1janachone	DESIGNED - JTF	REVISED -
PLOT SCALE = NTS	CHECKED - WJC	REVISED -
PLOT DATE = 3/6/2020	DRAWN - JTF	REVISED -
	CHECKED - WJC	REVISED -

F.A.I. RTE. 90/94	SECTION 2014-015R&B-R	COUNTY COOK	TOTAL SHEETS 825	SHEET NO. 821
CONTRACT NO. 60X94			ILLINOIS FED. AID PROJECT	

11:37:32 AM D:\60X94-SHT-AS-BUILT-141.dgn



FOR INFORMATION ONLY



Drawn By: E.H. Pratscher
 Traced By: [Signature]
 Checked By: [Signature]
 Approved By: [Signature]

NOTES:
 For General Notes see sheet G-36
 For Detail of Sleeve placement for
 Pedestrian Barriers Type 1A and
 1B see Sheet G-70.

CITY OF CHICAGO
 DEPARTMENT OF PUBLIC WORKS
 BUREAU OF ENGINEERING
 NORTHWEST ROUTE SUPERHIGHWAY
 SECTION 0101.8-2P
RETAINING WALL
 WEST R.O.W. LINE - JACKSON BLVD. TO ADAMS ST.
 SCALE: AS NOTED
 SHEET NO. G-33 OF 33 SHEETS
 APRIL 1987

11:37:43 AM D:\60X94-SHT-AS-BUILT-142.dgn



USER NAME = v1janachone	DESIGNED - JTF	REVISED -
PLOT SCALE = NTS	CHECKED - WJC	REVISED -
PLOT DATE = 3/6/2020	DRAWN - JTF	REVISED -
	CHECKED - WJC	REVISED -

STATE OF ILLINOIS
 DEPARTMENT OF TRANSPORTATION

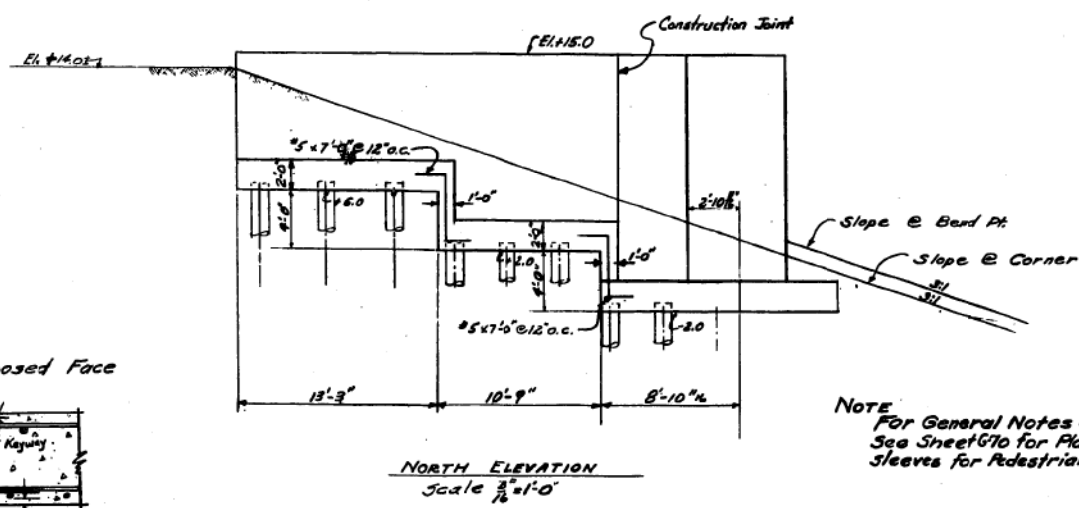
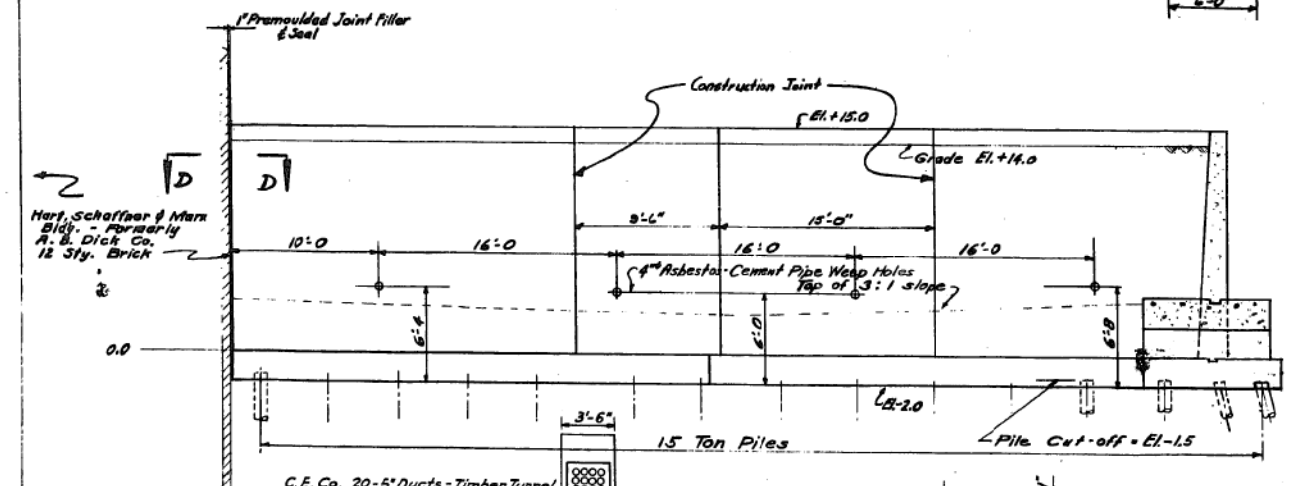
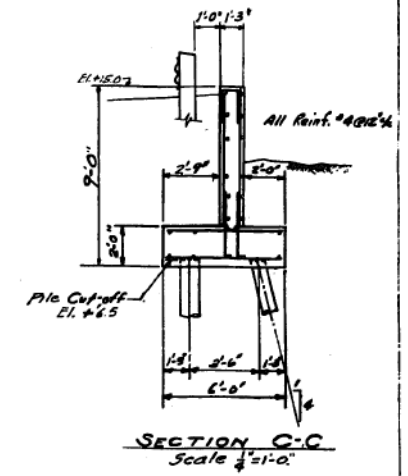
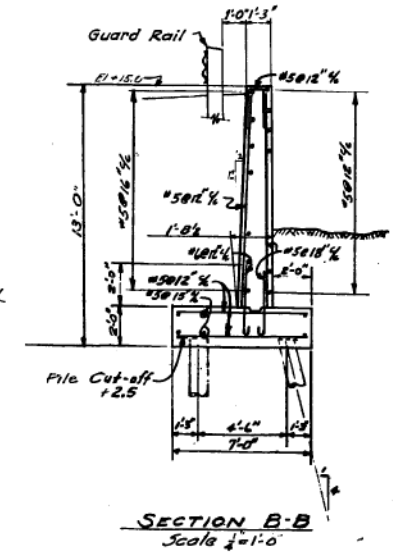
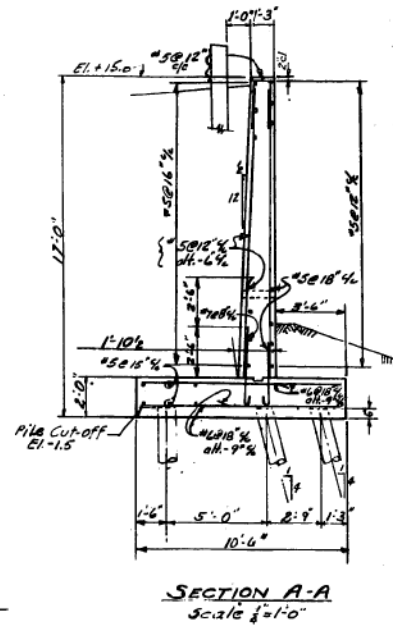
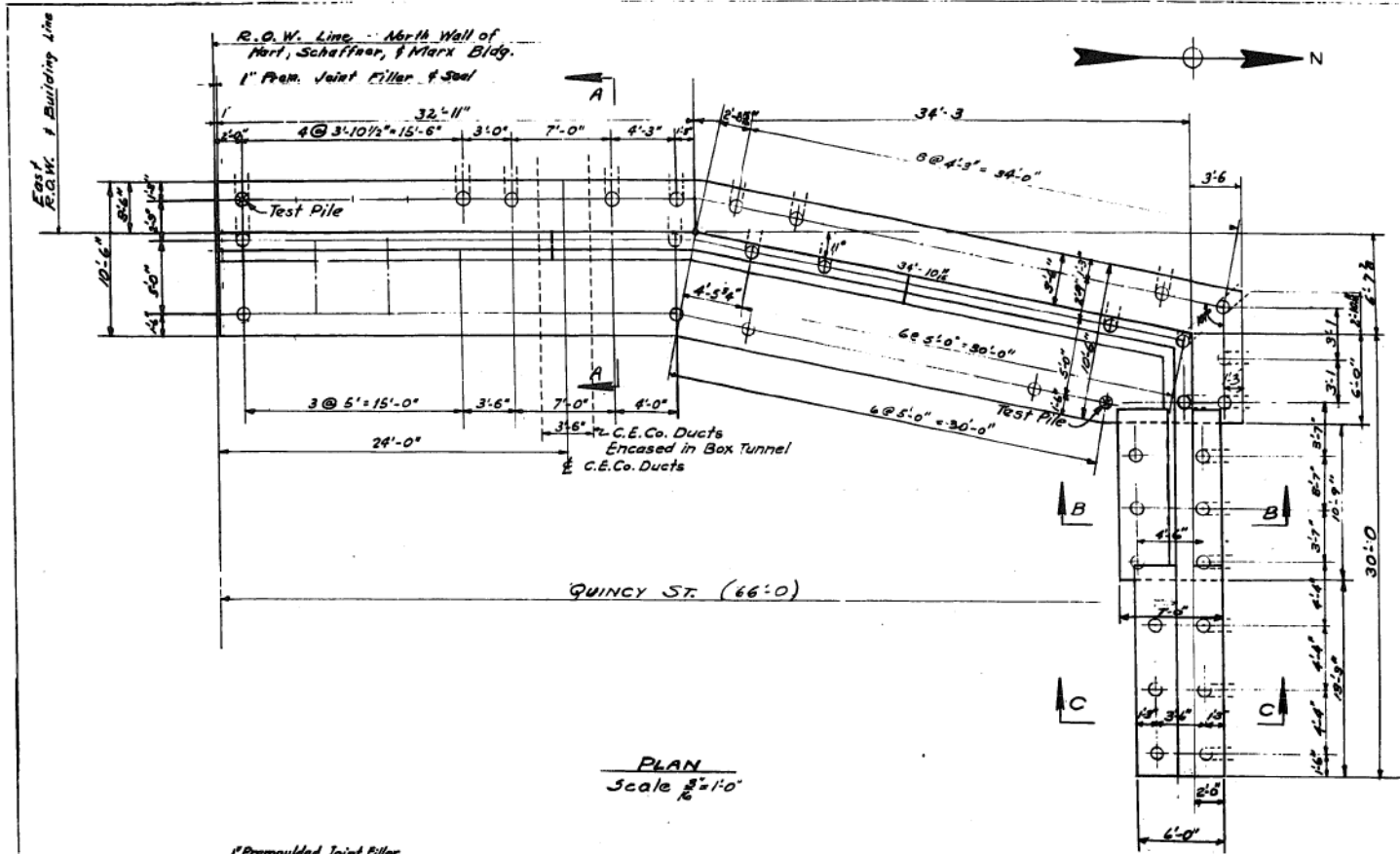
EXISTING RECORD DRAWINGS

SHEET NO. AB-142 OF AB-145 SHEETS

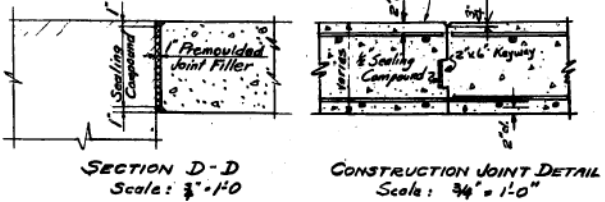
F.A.I. RTE. 90/94	SECTION 2014-015R&B-R	COUNTY COOK	TOTAL SHEETS 825	SHEET NO. 822
CONTRACT NO. 60X94			ILLINOIS FED. AID PROJECT	

FOR INFORMATION ONLY

DATE	SEC.	COUNTY	TOTAL SHEETS	SHEET NO.
F.A.I. 1	0101.6-2P	COOK	108	34
PER. DRAW BY: E.H. PRATSCHER			PROJECT: 1-01-1 (20)	

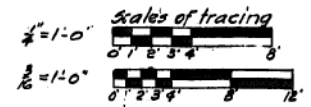


Contractor shall determine exact position of C.E.Co. Ducts by excavation and take all necessary precautions to drive piling without causing any injury or dislocation to Ducts, or Box Tunnel in which they are encased. Pile driving shall start adjacent to the Ducts and work out in either direction. Piles adjacent to the Duct Tunnel shall be drilled if this is considered necessary by the Engineer.



NOTE
For General Notes See Sheet G-36
See Sheet G70 for Placement of Sleeves for Pedestrian Barrier, Type II

Drawn By: E.H. Pratscher
Traced By: Reproduction
Checked By: E.H. Pratscher



CITY OF CHICAGO
DEPARTMENT OF PUBLIC WORKS
BUREAU OF ENGINEERING
NORTHWEST ROUTE SUPERHIGHWAY
SECTION 0101.6-2P

RETAINING WALL
EAST R.O.W. LINE AT QUINCY STREET

SCALE: AS NOTED
APRIL 1957
SHEET NO. G-34 OF 108 SHEETS

11:37:53 AM
D:\60X94-SHT-AS-BUILT-143.dgn



USER NAME = v1janachone	DESIGNED - JTF	REVISED -
PLOT SCALE = NTS	CHECKED - WJC	REVISED -
PLOT DATE = 3/6/2020	DRAWN - JTF	REVISED -
	CHECKED - WJC	REVISED -

STATE OF ILLINOIS
DEPARTMENT OF TRANSPORTATION

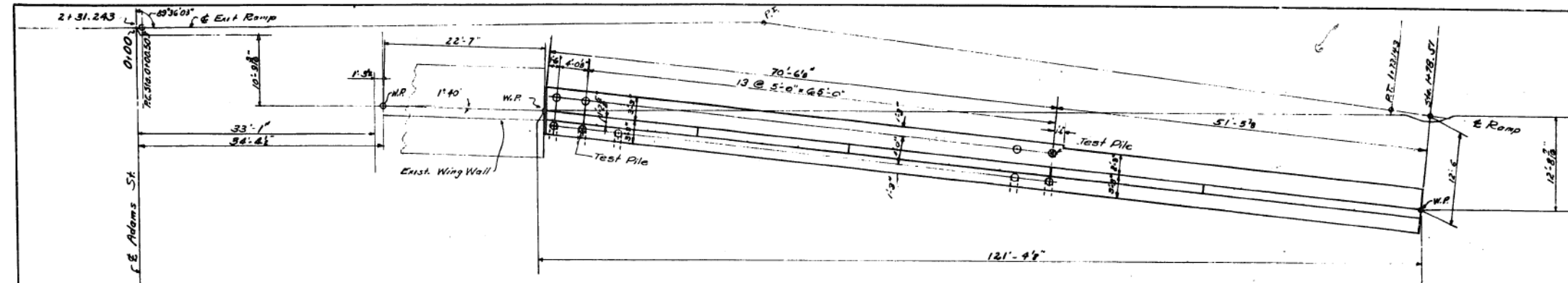
EXISTING RECORD DRAWINGS

SHEET NO. AB-143 OF AB-145 SHEETS

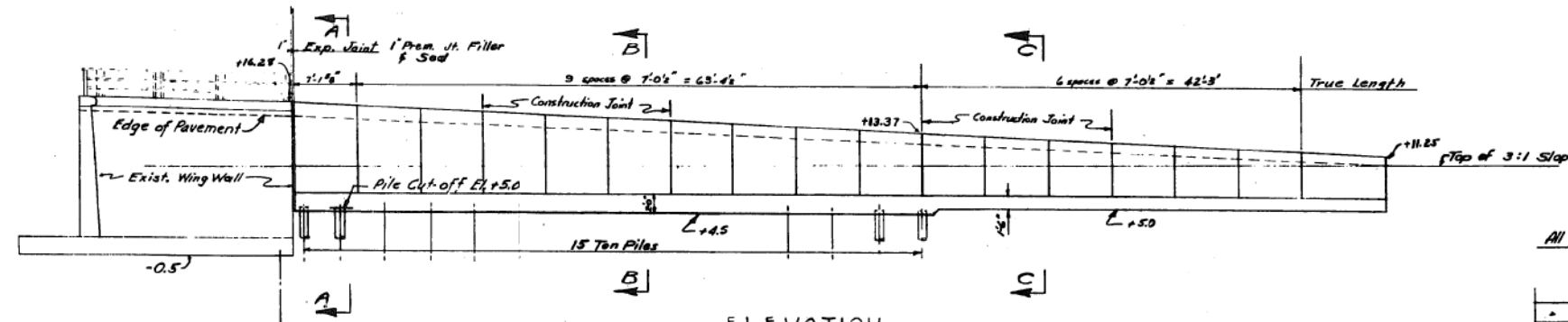
F.A.I. RTE.	SECTION	COUNTY	TOTAL SHEETS	SHEET NO.
90/94	2014-015R&B-R	COOK	825	823
CONTRACT NO.			60X94	
ILLINOIS FED. AID PROJECT				

FOR INFORMATION ONLY

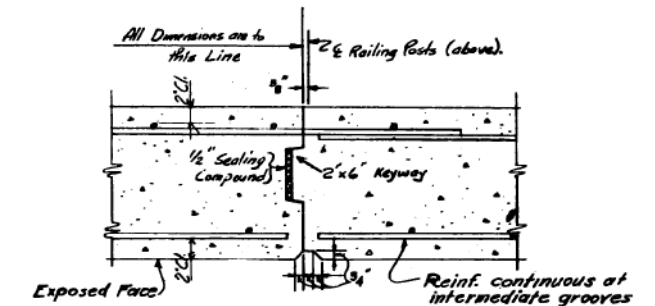
ROUTE	SEC.	COUNTY	TOTAL SHEETS	SHEET NO.
F.A.I. 2	015R-8	COOK	825	824
PROJECT 1-01-1(2)				



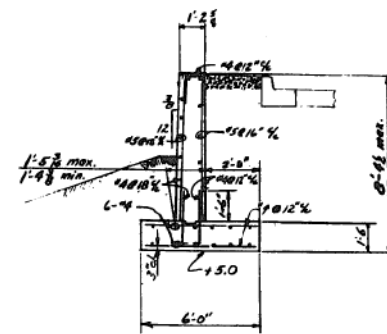
PLAN
Scale 1/8" = 1'-0"



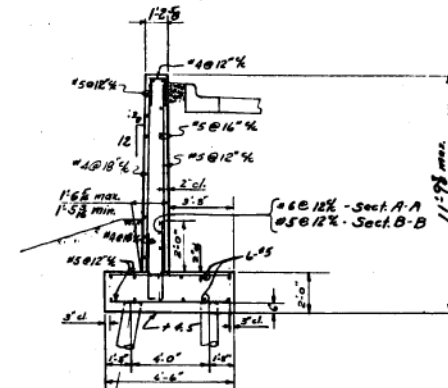
ELEVATION
Scale 1/8" = 1'-0"



Detail of Construction Joint
Scale: 1" = 1'-0"



SECTION C-C
Scale 1/4" = 1'-0"



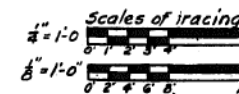
SECTION A-A
SECTION B-B
Scale 1/4" = 1'-0"

NOTES:
For General Notes see sheet G-36
For detail at existing wing wall see sheet G-32
For location of Aluminum Rail Anchor Bolts see Sheet A-1

CITY OF CHICAGO
DEPARTMENT OF PUBLIC WORKS
BUREAU OF ENGINEERING
NORTHWEST ROUTE SUPERHIGHWAY
SECTION 0101.8-2P
RETAINING WALL
EXIT RAMP "H"

SCALE: AS NOTED SHEET NO. G-35 OF 825 SHEETS APRIL 1987

Drawn By E.H. Pratscher
Traced By Reproduction
Checked By C. J. Zickler
Approved By [Signature]



11:36:04 AM
D:\60X94-SHT-AS-BUILT-144.dgn



USER NAME = v1janachone	DESIGNED - JTF	REVISED -
PLOT SCALE = NTS	CHECKED - WJC	REVISED -
PLOT DATE = 3/6/2020	DRAWN - JTF	REVISED -
	CHECKED - WJC	REVISED -

STATE OF ILLINOIS
DEPARTMENT OF TRANSPORTATION

EXISTING RECORD DRAWINGS

SHEET NO. AB-144 OF AB-145 SHEETS

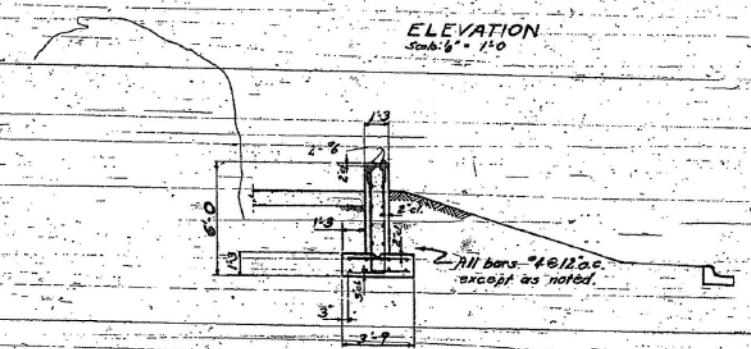
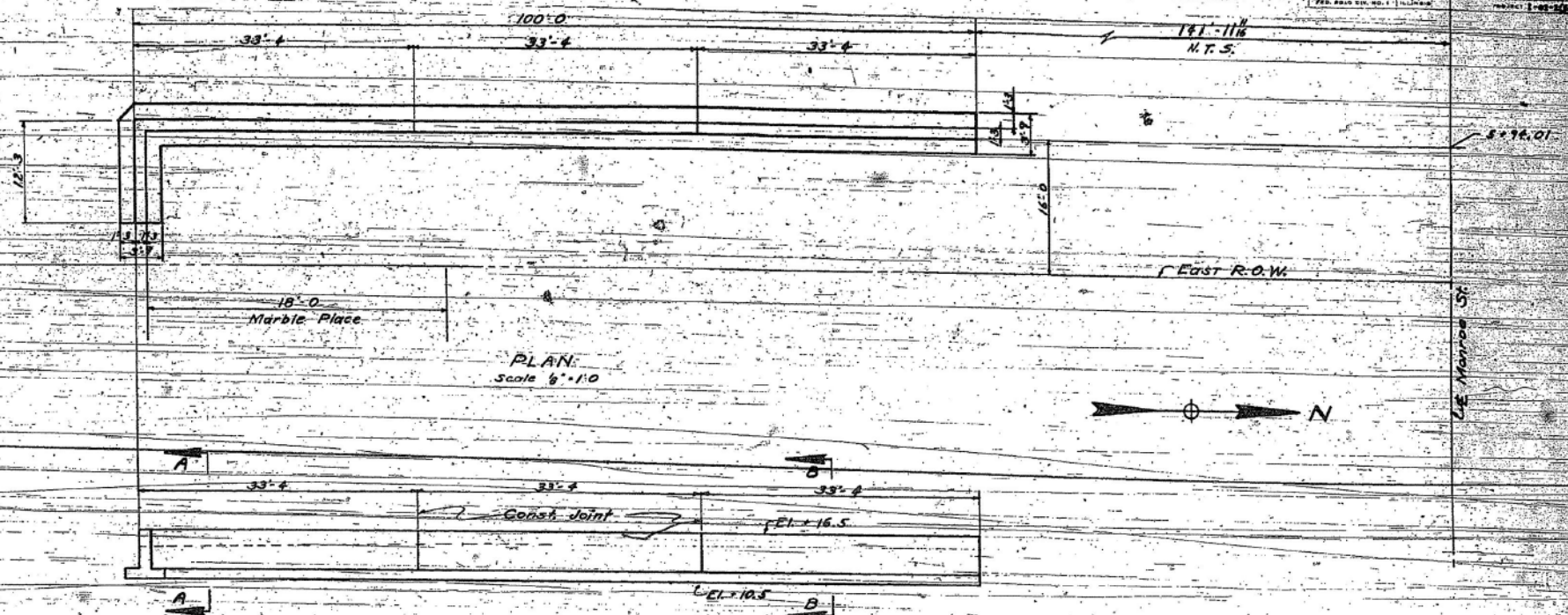
F.A.I. RTE.	SECTION	COUNTY	TOTAL SHEETS	SHEET NO.
90/94	2014-015R&B-R	COOK	825	824
CONTRACT NO.			60X94	

ILLINOIS FED. AID PROJECT

FOR INFORMATION ONLY

FAI 94

PROJECT NO.	DATE	DESIGNED BY	CHECKED BY	TOTAL SHEETS	SHEET NO.
F.A.I. 2	10/10/93	COOK		37	



SECTION B-B
Scale 1/4" = 1'-0"

SECTION A-A
Scale 1/4" = 1'-0"

NOTES:
For General Notes, see sheet G-36
For Construction Joint Detail, see sheet G-33
For detail and spacing of sleeves for Pedestrian Barrier, Type 1A, see Sheet G-70

Drawn by E.H. Pratscher
Checked by [Signature]
Approved by [Signature]

CITY OF CHICAGO
DEPARTMENT OF PUBLIC WORKS
BUREAU OF ENGINEERING
NORTHWEST ROUTE SUPERHIGHWAY
SECTION 0101.6-2P
RETAINING WALL
EAST R.O.W. LINE AT MARBLE PLACE
SCALE AS NOTED SHEET NO. 0-37 OF APRIL 1997 SHEETS

11:38:15 AM
D:\60X94-SHT-AS-BUILT-145.dgn



USER NAME = v1janachone	DESIGNED - JTF	REVISED -
PLOT SCALE = NTS	CHECKED - WJC	REVISED -
PLOT DATE = 3/6/2020	DRAWN - JTF	REVISED -
	CHECKED - WJC	REVISED -

STATE OF ILLINOIS
DEPARTMENT OF TRANSPORTATION

EXISTING RECORD DRAWINGS

SHEET NO. AB-145 OF AB-145 SHEETS

F.A.I. RTE.	SECTION	COUNTY	TOTAL SHEETS	SHEET NO.
90/94	2014-015R&B-R	COOK	825	825
CONTRACT NO.			60X94	

ILLINOIS FED. AID PROJECT