

STATE OF ILLINOIS
DEPARTMENT OF TRANSPORTATION

F.A.P. RTE.	SECTION	COUNTY	TOTAL SHEETS	SHEET NO.
358	2020-006-BR	COOK	26	1
ILLINOIS			CONTRACT NO 62K72	

FOR INDEX OF SHEETS, SEE SHEET NO. 2

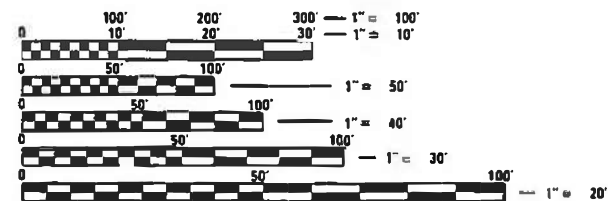
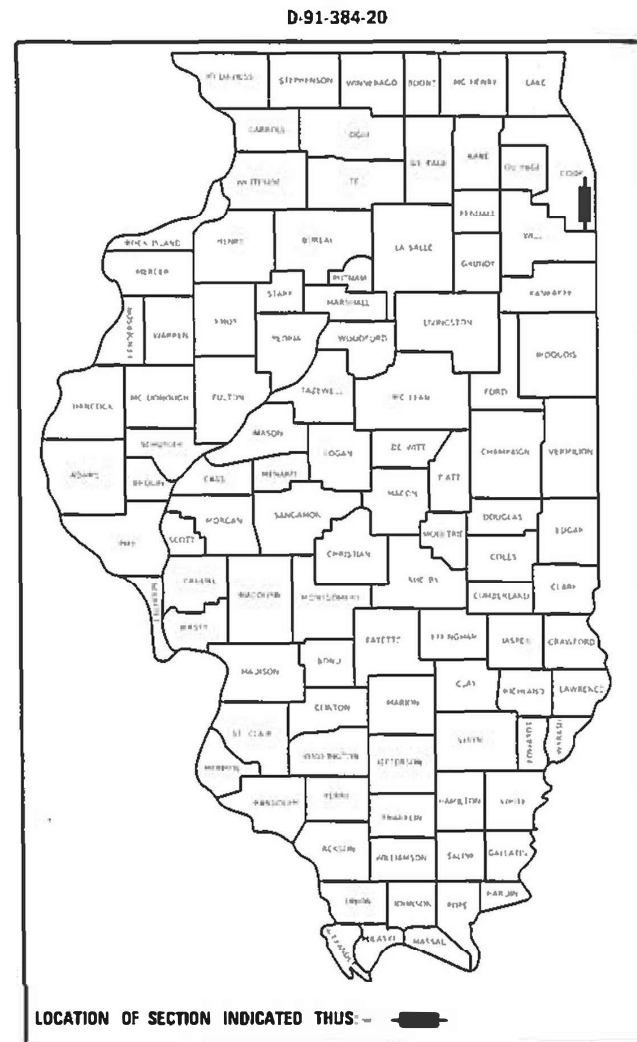
PROPOSED HIGHWAY PLANS

F.A.P. ROUTE 358: TORRENCE AVE
OVER IHB AND B&OCT RAILROAD
SECTION 2020-006-BR
BRIDGE & JOINT REPAIR, BRIDGE DECK OVERLAY
COOK COUNTY

C-91-184-20

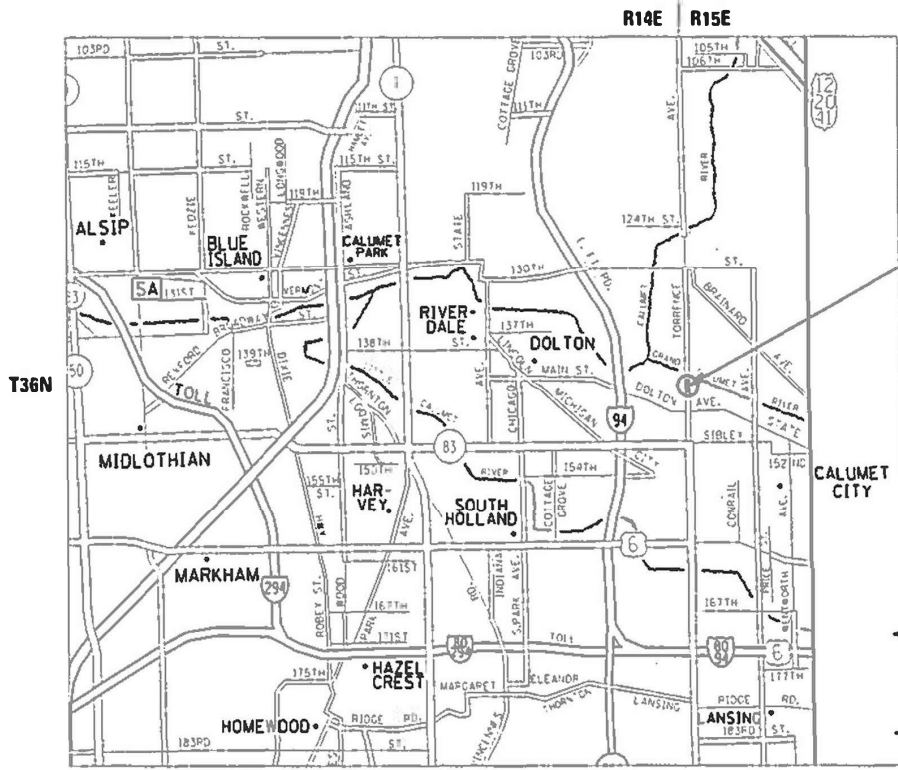
PROJECT IS LOCATED IN THE VILLAGE OF BURNHAM.

TRAFFIC DATA
EXISTING ADT = 17500 (2018)
POSTED SPEED LIMIT = 40 MPH



FULL SIZE PLANS HAVE BEEN PREPARED USING STANDARD ENGINEERING SCALES. REDUCED SIZED PLANS WILL NOT CONFORM TO STANDARD SCALES. IN MAKING MEASUREMENTS ON REDUCED PLANS, THE ABOVE SCALES MAY BE USED.

J.U.I.E.
JOINT UTILITY LOCATION INFORMATION FOR EXCAVATORS
1-800-892-0123
OR 811



IMPROVEMENT LOCATION
SN-016-0935

THORNTON TOWNSHIP

GROSS LENGTH = 593.9 FT. = 0.112 MILE
NET LENGTH = 593.9 FT. = 0.112 MILE

PROJECT MANAGER: ALAIN MIDY (847) 221-3056

CONTRACT NO. 62K72

STATE OF ILLINOIS
DEPARTMENT OF TRANSPORTATION

SUBMITTED March 13 20 20
Anthony J. Rungtjorn REGIONAL ENGINEER
May 8, 2020
Scott E. A. Etk
ENGINEER OF DESIGN AND ENVIRONMENT
May 8, 2020
James J. Gu
DIRECTOR OF HIGHWAYS PROJECT IMPLEMENTATION

PRINTED BY THE AUTHORITY OF THE STATE OF ILLINOIS

INDEX OF SHEETS

SHEET NO.	DESCRIPTION
1	TITLE SHEET
2	INDEX OF SHEETS, HIGHWAY STANDARDS, AND GENERAL NOTES
3	SUMMARY OF QUANTITIES
4	TRAFFIC CONTROL STAGING TYPICAL SECTIONS
5 - 10	TRAFFIC CONTROL STAGING PLANS
11	ROADWAY AND PAVEMENT MARKING PLANS
12 - 21	PROPOSED STRUCTURAL REPAIRS
22	TRAFFIC CONTROL AND PROTECTION FOR SIDE ROAD, INTERSECTIONS, AND DRIVEWAYS (TC-10)
23	DISTRICT ONE TYPICAL PAVEMENT MARKINGS (TC-13)
24	TRAFFIC CONTROL AND PROTECTION AT TURN BAYS (TO REMAIN OPEN TO TRAFFIC) (TC-14)
25	ARTERIAL ROAD INFORMATION SIGN (TC-22)
26	DRIVEWAY ENTRANCE SIGNING (TC-26)

STATE STANDARDS

STANDARD NO.	DESCRIPTION
000001-07	STANDARD SYMBOLS, ABBREVIATIONS AND PATTERNS
701101-05	OFF-RD OPERATIONS, MULTILANE, 15' (4.5m) TO 24" (600mm) FROM PAVEMENT EDGE
701106-02	OFF-RD OPERATIONS, MULTILANE, MORE THAN 15' (4.5m) AWAY FROM PAVEMENT EDGE
701427-05	LANE CLOSURE, MULTILANE, INTERMITTENT OR MOVING OPER., FOR SPEEDS ≤ 40 MPH
701606-10	URBAN SINGLE LANE CLOSURE, MULTILANE, 2W WITH MOUNTABLE MEDIAN
701901-08	TRAFFIC CONTROL DEVICES
704001-08	TEMPORARY CONCRETE BARRIER
782006-01	GUARDRAIL AND BARRIER WALL REFLECTOR MOUNTING DETAILS

GENERAL NOTES

1. BEFORE STARTING ANY EXCAVATION, THE CONTRACTOR SHALL CALL "J.U.L.I.E." AT (800) 892-0123 OR 811 FOR FIELD LOCATIONS OF BURIED ELECTRIC, TELEPHONE AND GAS UTILITIES. 48 HOUR NOTIFICATION IS REQUIRED.
2. THE CONTRACTOR SHALL COORDINATE CONSTRUCTION ACTIVITIES WITH UTILITY COMPANIES, AND THE VILLAGE OF BURNHAM.
3. THE CONTRACTOR WILL NOT BE ALLOWED TO SET UP A YARD OR FIELD OFFICE ON STATE PROPERTY WITHOUT WRITTEN PERMISSION FROM THE DEPARTMENT.
4. ALL DAMAGE TO EXISTING PAVEMENT MARKINGS OR RAISED REFLECTIVE PAVEMENT MARKERS OUTSIDE THE REMOVAL LINE SHOWN ON THE PLANS SHALL BE REPLACED AT NO ADDITIONAL COST TO THE DEPARTMENT.
5. BEFORE BEGINNING ANY WORK, THE CONTRACTOR SHALL RETAIN AND RECORD FOR FUTURE REFERENCE, ALL EXISTING PAVEMENT MARKING LINES (AND RAISED REFLECTIVE PAVEMENT MARKERS) IN ORDER THAT THESE LOCATIONS CAN BE RE-ESTABLISHED FOR STRIPING. EXACT LOCATIONS OF ALL PAVEMENT MARKINGS SHALL BE AS DIRECTED BY THE ENGINEER.
6. IT SHALL BE THE CONTRACTOR'S RESPONSIBILITY TO VERIFY ALL DIMENSIONS AND CONDITIONS EXISTING IN THE FIELD PRIOR TO CONSTRUCTION AND ORDERING OF MATERIALS.
7. THE CONTRACTOR SHALL CONTACT THE DISTRICT ONE TRAFFIC CONTROL SUPERVISOR VIA EMAIL AT KALPANA.KANNAN-HOSADURGA@ILLINOIS.GOV A MINIMUM OF 72 HOURS IN ADVANCE OF BEGINNING WORK.
8. THE ENGINEER SHALL CONTACT PATRICE HARRIS, AREA TRAFFIC FIELD TECHNICIAN, AT PATRICE.HARRIS@ILLINOIS.GOV A MINIMUM OF TWO (2) WEEKS PRIOR TO THE PLACEMENT OF PERMANENT PAVEMENT MARKINGS.
9. THESE PLANS HAVE BEEN PREPARED FROM NOTES RECEIVED FROM THE BUREAU OF MAINTENANCE.
10. THE CONTRACTOR SHALL BE REQUIRED TO PROVIDE ACCESS TO ABUTTING PROPERTY AT ALL TIMES DURING THE CONSTRUCTION OF THIS PROJECT.
11. DO NOT SCALE PLANS FOR CONSTRUCTION DIMENSIONS.
12. THE CONTRACTOR SHALL TAKE NECESSARY PRECAUTIONS TO INSURE THAT NO DEBRIS WILL ENDANGER OR INTERFERE WITH TRAFFIC ON THE ROADWAY (or THE RAILROAD) BENEATH THE BRIDGE ACCORDING TO ARTICLE 107.09 (or 107.12) OF THE STANDARD SPECIFICATIONS. THIS WORK WILL NOT BE PAID FOR SEPARATELY, BUT SHALL BE INCLUDED IN THE CONTRACT UNIT PRICE FOR THE APPROPRIATE PAY ITEM INVOLVED AND NO ADDITIONAL COMPENSATION WILL BE ALLOWED.
13. THE REMOVAL OF THE EXISTING JOINT IS INCLUDED IN THE COST OF THE PREFORMED JOINT SEAL.

MODEL: Default
 FILE NAME: P:\p1planroom.dat
 ILLINOIS.GOV:PWIDOT\Documents\DOT_Offices\District_1\Projects\138420\CADD\Drawings\138420-sh-ge-notes.dgn

REV-SEP

	USER NAME = rothjp DESIGNED - DRAWN - CHECKED - DATE -	REVISED - REVISED - REVISED - REVISED -	STATE OF ILLINOIS DEPARTMENT OF TRANSPORTATION	INDEX OF SHEETS, STATE STANDARDS, AND GENERAL NOTES	F.A.P. RTE. 358	SECTION 2020-006-BR	COUNTY COOK	TOTAL SHEETS 26	SHEET NO. 2	CONTRACT NO. 62K72 ILLINOIS FED. AID PROJECT
			SCALE:		SHEET 1 OF 1 SHEETS		STA.		TO STA.	

SUMMARY OF QUANTITIES			URBAN TOTAL QUANTITIES	CONSTRUCTION TYPE CODE				
CODE NO	ITEM	UNIT		100% STATE 0047				
52000005	PREFORMED JOINT SEAL, 1"	FOOT	81	81				
52000025	PREFORMED JOINT SEAL, 2"	FOOT	207	207				
67000400	ENGINEER'S FIELD OFFICE, TYPE A	CAL MO	6	6				
67100100	MOBILIZATION	L SUM	1	1				
70300904	PAVEMENT MARKING TAPE, TYPE IV 4"	FOOT	10972	10972				
70400100	TEMPORARY CONCRETE BARRIER	FOOT	875	875				
70400200	RELOCATE TEMPORARY CONCRETE BARRIER	FOOT	875	875				
70600250	IMPACT ATTENUATORS, TEMPORARY (NON-REDIRECTIVE), TEST LEVEL 3	EACH	2	2				
70600350	IMPACT ATTENUATORS, RELOCATE (NON-REDIRECTIVE), TEST LEVEL 3	EACH	2	2				
* 78000200	THERMOPLASTIC PAVEMENT MARKING - LINE 4"	FOOT	3720	3720				
* 78009004	MODIFIED URETHANE PAVEMENT MARKING - LINE 4"	FOOT	2930	2930				
78200011	BARRIER WALL REFLECTORS, TYPE C	EACH	140	140				
78300200	RAISED REFLECTIVE PAVEMENT MARKER REMOVAL	EACH	32	32				
X0327980	PAVEMENT MARKING REMOVAL - WATER BLASTING	SO FT	1284	1284				
X0900022	BRIDGE DRAINAGE SYSTEM REPAIR	FOOT	120	120				

SUMMARY OF QUANTITIES			URBAN TOTAL QUANTITIES	CONSTRUCTION TYPE CODE				
CODE NO	ITEM	UNIT		100% STATE 0047				
X5870015	BRIDGE DECK CONCRETE SEALER	SO FT	10876	10876				
X7010216	TRAFFIC CONTROL AND PROTECTION, (SPECIAL)	L SUM	1	1				
X7030005	TEMPORARY PAVEMENT MARKING REMOVAL	SO FT	3658	3658				
Z0012102	CONCRETE BRIDGE DECK SCARIFICATION 3/8 INCH	SO YD	3432	3432				
Z0012193	BRIDGE DECK THIN POLYMER OVERLAY 3/8"	SO YD	3432	3432				
Z0012754	STRUCTURAL REPAIR OF CONCRETE (DEPTH EQUAL TO OR LESS THAN 5 INCHES)	SO FT	209	209				
Z0030850	TEMPORARY INFORMATION SIGNING	SO FT	51.4	51.4				
Z0041895	POLYMER CONCRETE	CU FT	30	30				
Z0048665	RAILROAD PROTECTIVE LIABILITY INSURANCE	L SUM	1	1				
Z0076604	TRAINEES - TRAINING PROGRAM GRADUATE	HOUR	500	500				

FILE NAME =	USER NAME = rdhjp	DESIGNED -	REVISED -
p:\planroom\dtd\111\mof.gov\FW001\Documents\VDOT\Offices\District\Projects\0138420\CADD\Info\Design\0138420-4\DRAWN		CHECKED -	REVISED -
		DATE -	REVISED -

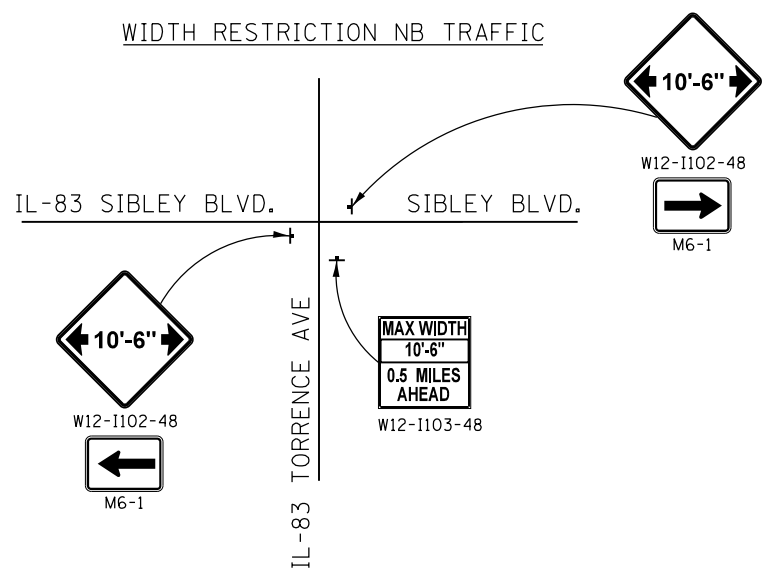
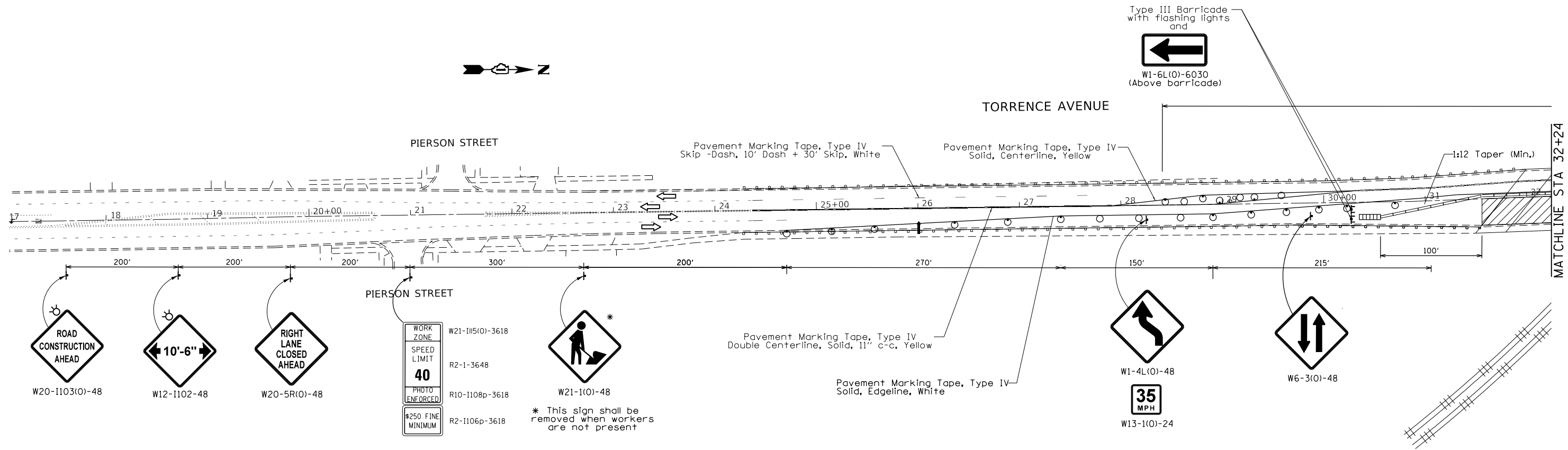
**STATE OF ILLINOIS
DEPARTMENT OF TRANSPORTATION**

**SUMMARY OF QUANTITIES
TORRENCE AVE OVER IHB AND B&OCT RAILROAD**

F.A.P. RTE.	SECTION	COUNTY	TOTAL SHEETS	SHEET NO.
358	2020-006-BR	COOK	26	3
CONTRACT NO. 62K72				
SCALE: SHEET NO. 1 OF 1 SHEETS STA. TO STA. FED. ROAD DIST. NO. 1 ILLINOIS FED. AID PROJECT				

* SPECIALTY ITEMS

0042
REV-SEP



- SYMBOLS**
- Arrow board
 - Cone, drum or barricade
 - Drum with flashing lights
 - Sign on portable or permanent support
 - Work area
 - Type III barricade with flashing lights
 - Impact attenuator

MODEL: Default
 FILE: \\p1anroom.dal.hillco.com\p1anroom\PHUDOT\Documents\DOT_Offices\District 1\Projects\1138420\CADD\PlanDesign\1138420-sh-staging.dgn

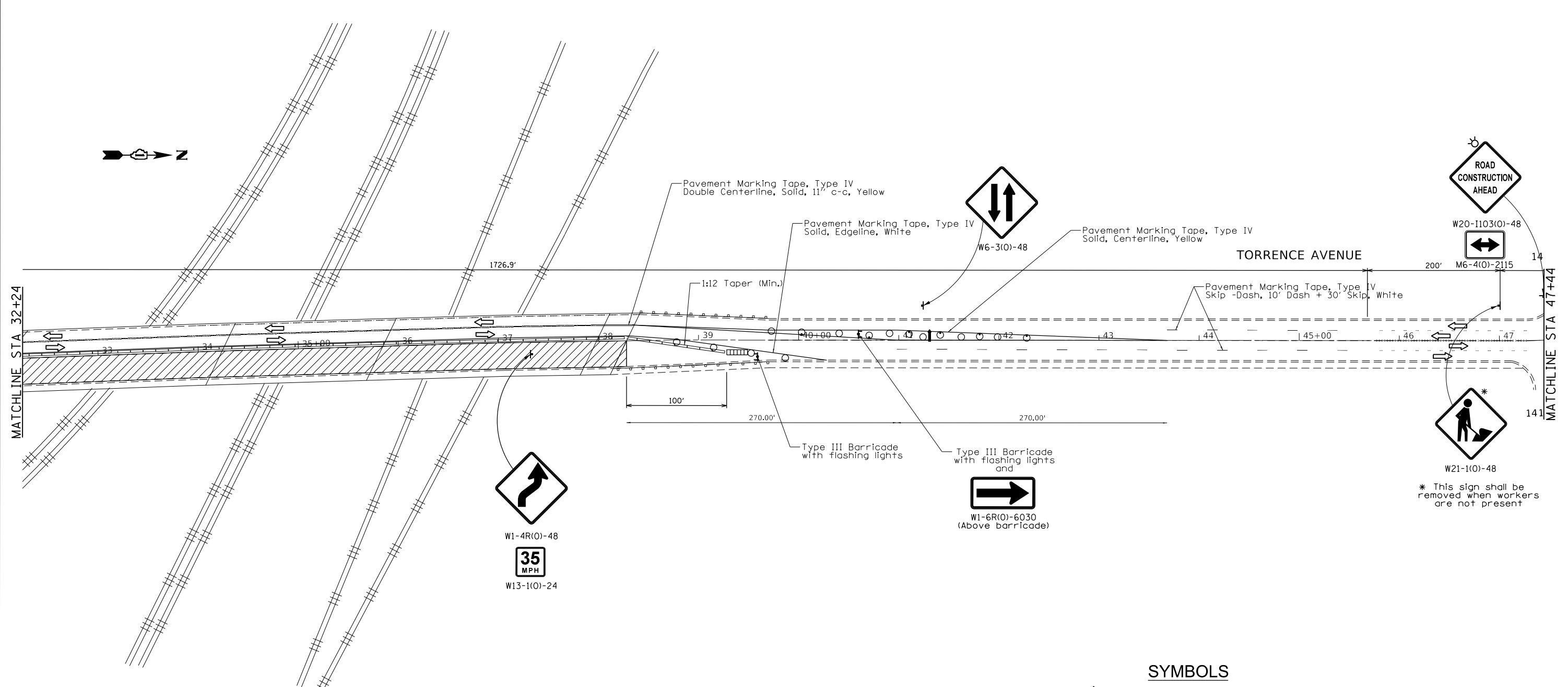
USER NAME = rothjp	DESIGNED -	REVISED -
PLOT SCALE = 100.1148' / in.	DRAWN -	REVISED -
PLOT DATE = 3/24/2020	CHECKED -	REVISED -
	DATE -	REVISED -

**STATE OF ILLINOIS
DEPARTMENT OF TRANSPORTATION**

STAGING PLANS - STAGE I			
TORRENCE AVE OVER IHB AND B&OCT RAILROAD			
SCALE:	SHEET 1	OF 3 SHEETS	STA. TO STA.

F.A.P. RTE. 358	SECTION 2020-006-BR	COUNTY COOK	TOTAL SHEETS 26	SHEET NO. 5
ILLINOIS FED. AID PROJECT				

CONTRACT NO. 62K72



* This sign shall be removed when workers are not present

SYMBOLS

- Arrow board
- Cone, drum or barricade
- Drum with flashing lights
- Sign on portable or permanent support
- Work area
- Type III barricade with flashing lights
- Impact attenuator

MODEL: Default
 FILE NAME: \\snp\lanroom\dot\illinois.gov\PHUDOT\Documents\DOT_Offices\District_1\Projects\138420\CADD\TaskDesign\138420-shl-staging.dgn

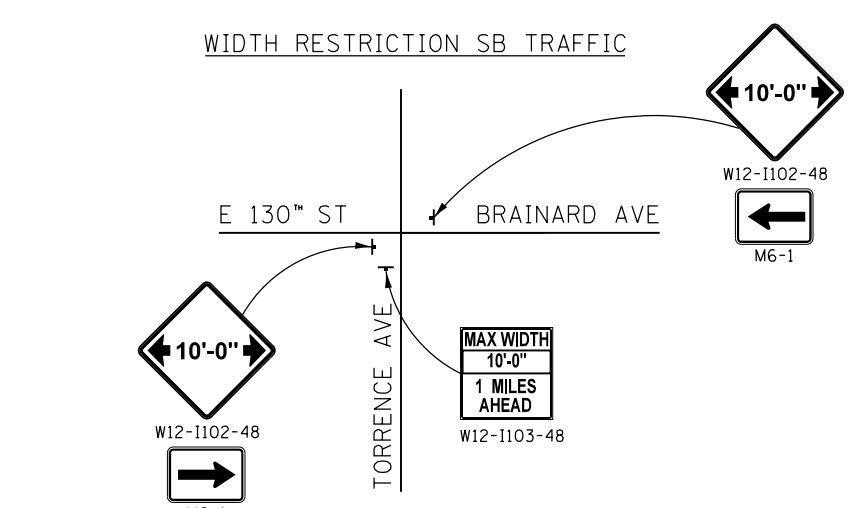
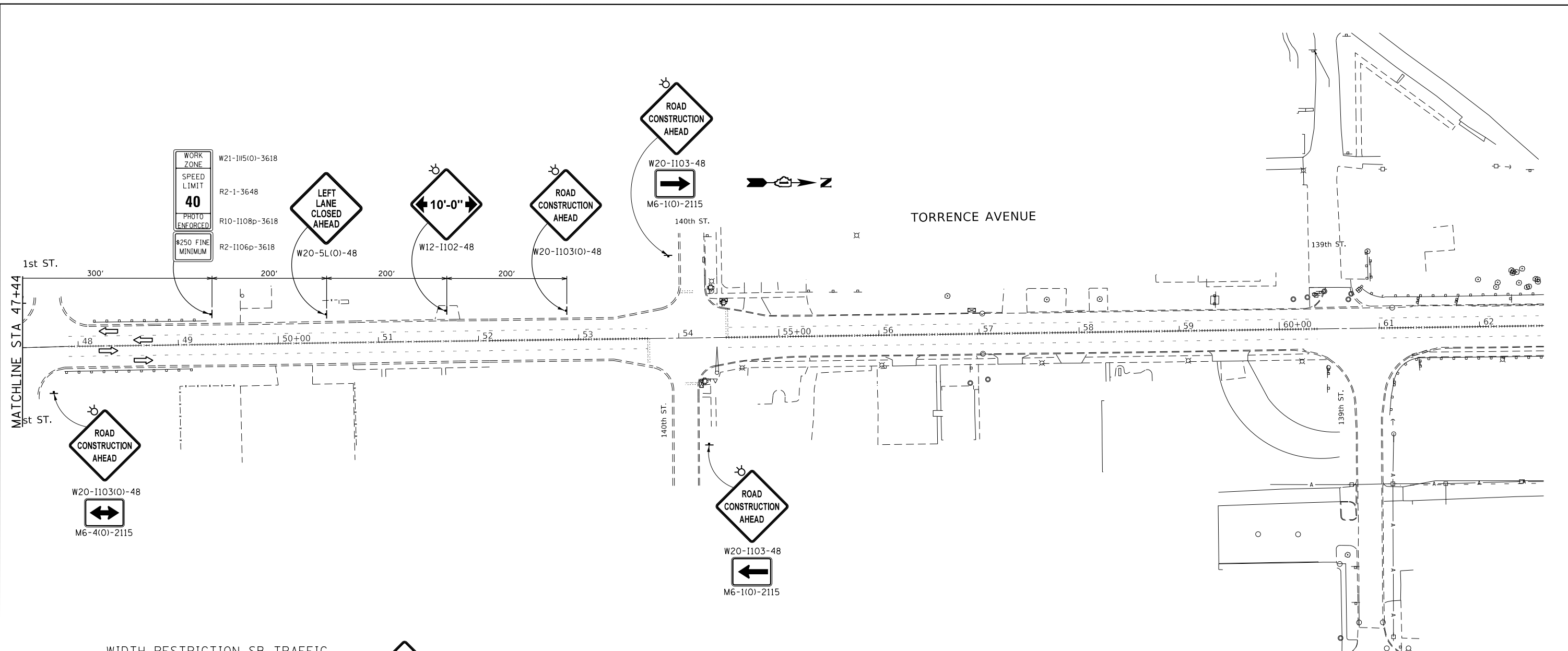
USER NAME = rothjp	DESIGNED -	REVISED -
DRAWN -	REVISOR -	
PLOT SCALE = 100.1148' / in.	CHECKED -	REVISED -
PLOT DATE = 3/24/2020	DATE -	REVISED -

**STATE OF ILLINOIS
DEPARTMENT OF TRANSPORTATION**

**STAGING PLANS - STAGE I
TORRENCE AVE OVER IHB AND B&OCT RAILROAD**

SCALE: SHEET 2 OF 3 SHEETS STA. TO STA.

F.A.P. RTE.	SECTION	COUNTY	TOTAL SHEETS	SHEET NO.
358	2020-006-BR	COOK	26	6
ILLINOIS FED. AID PROJECT			CONTRACT NO. 62K72	



- SYMBOLS**
- Arrow board
 - Cone, drum or barricade
 - Drum with flashing lights
 - Sign on portable or permanent support
 - Work area
 - Type III barricade with flashing lights
 - Impact attenuator

MODEL: Default
 FILE NAME: \\snp\lanroom\dot\illinois.gov\PHUDOT\Documents\DOT_Offices\District_1\Projects\138420\CADD\Drawings\138420-sh-staging.dgn

USER NAME = rothjp	DESIGNED -	REVISED -
PLOT SCALE = 100.1148' / in.	DRAWN -	REVISED -
PLOT DATE = 3/24/2020	CHECKED -	REVISED -
	DATE -	REVISED -

STATE OF ILLINOIS
DEPARTMENT OF TRANSPORTATION

STAGING PLANS - STAGE I
TORRENCE AVE OVER IHB AND B&OCT RAILROAD

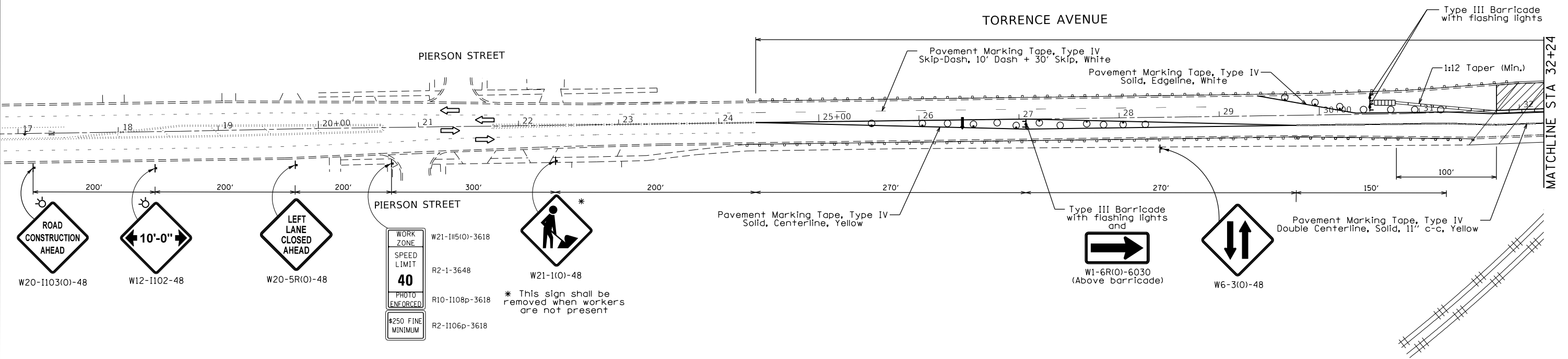
SCALE: SHEET 3 OF 3 SHEETS STA. TO STA.

F.A.P. RTE. 358	SECTION 2020-006-BR	COUNTY COOK	TOTAL SHEETS 26	SHEET NO. 7
CONTRACT NO. 62K72			ILLINOIS FED. AID PROJECT	

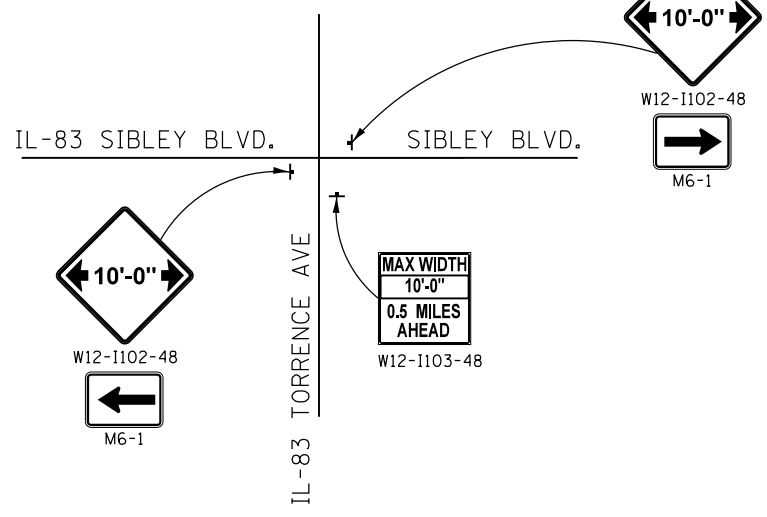


TORRENCE AVENUE

PIERSON STREET



WIDTH RESTRICTION NB TRAFFIC



SYMBOLS

- Arrow board
- Cone, drum or barricade
- Drum with flashing lights
- Sign on portable or permanent support
- Work area
- Type III barricade with flashing lights
- Impact attenuator

MODEL: Default
 FILE NAME: \\snp\lanroom\dot\illinois\gov\PHUDOT\Documents\DOT_Offices\District_1\Projects\138420\CADD\Drawings\138420-sh-staging.dgn

USER NAME = rothjp	DESIGNED -	REVISED -
PLOT SCALE = 100.1148' / in.	DRAWN -	REVISED -
PLOT DATE = 3/24/2020	CHECKED -	REVISED -
	DATE -	REVISED -

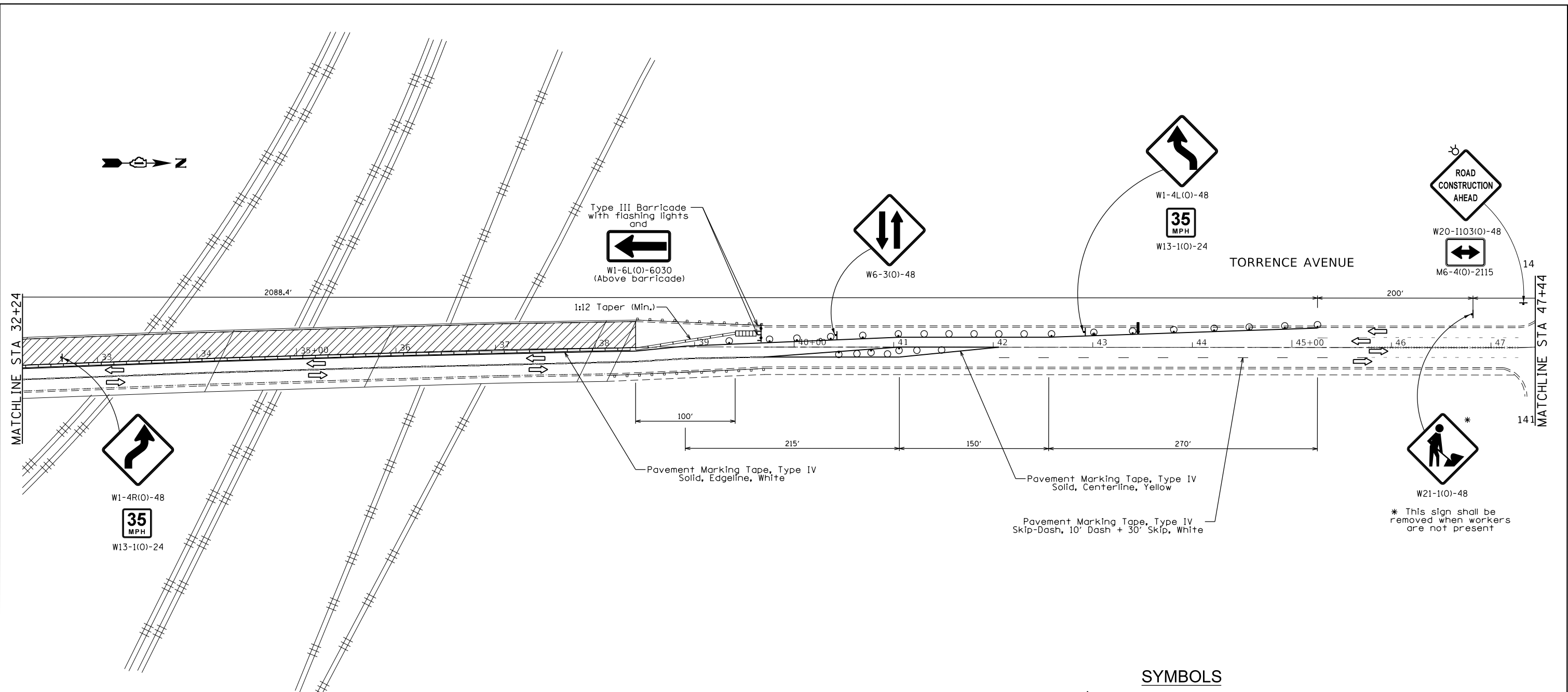
STATE OF ILLINOIS
DEPARTMENT OF TRANSPORTATION

STAGING PLANS - STAGE II
TORRENCE AVE OVER IHB AND B&OCT RAILROAD

SCALE: SHEET 1 OF 3 SHEETS STA. TO STA.

F.A.P. RTE. 358	SECTION 2020-006-BR	COUNTY COOK	TOTAL SHEETS 26	SHEET NO. 8
CONTRACT NO. 62K72			ILLINOIS FED. AID PROJECT	

MODEL: Default
 FILE NAME: \\s:\planroom\dot\illinois\gov\PHUDOT\Documents\DOT_Offices\District 1\Projects\138420\CADD\Plan\Design\138420-sh-ht-staging.dgn



- SYMBOLS**
- Arrow board
 - Cone, drum or barricade
 - Drum with flashing lights
 - Sign on portable or permanent support
 - Work area
 - Type III barricade with flashing lights
 - Impact attenuator

* This sign shall be removed when workers are not present

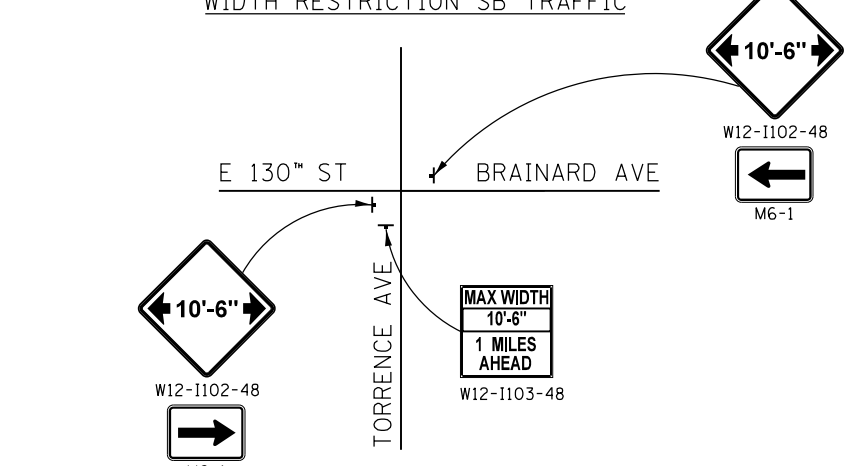
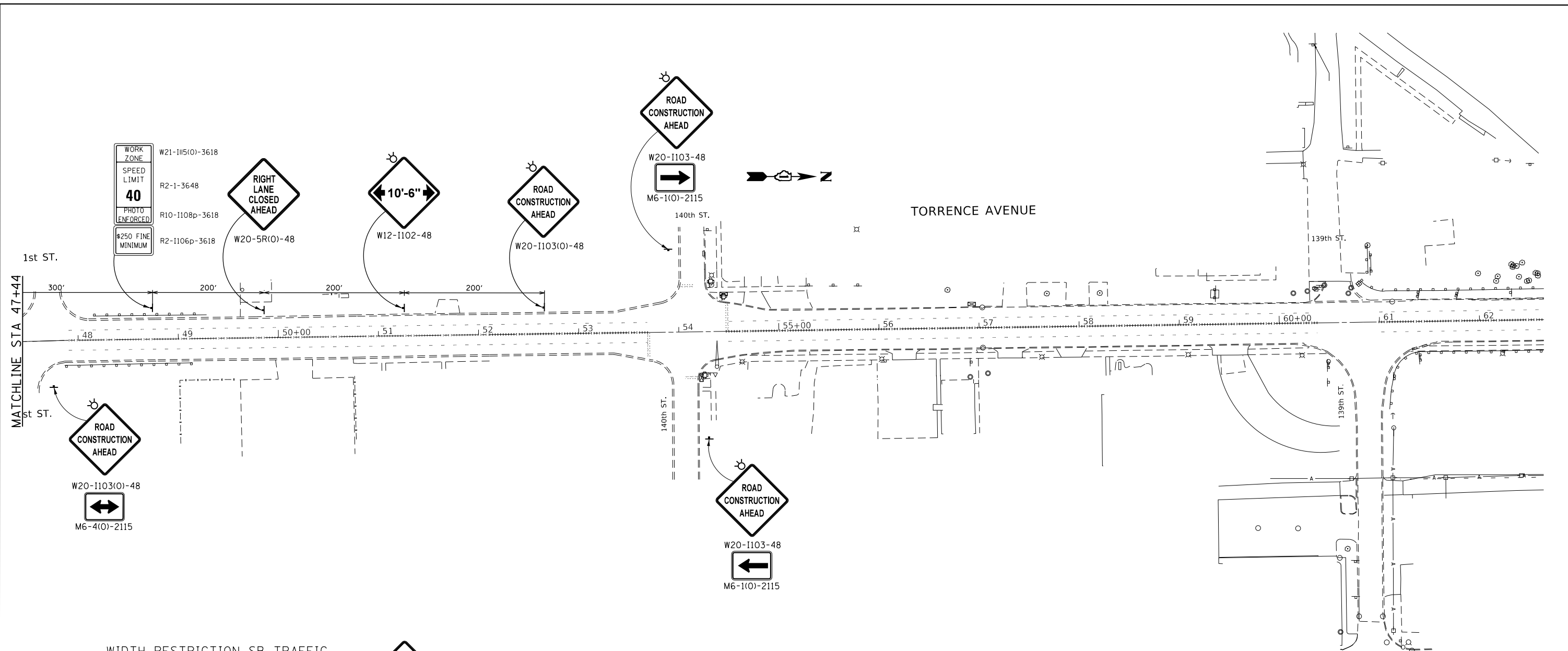
USER NAME = rothjp	DESIGNED -	REVISED -
DRAWN -	REVISOR -	REVISOR -
PLOT SCALE = 100.1148' / in.	CHECKED -	REVISOR -
PLOT DATE = 3/24/2020	DATE -	REVISOR -

**STATE OF ILLINOIS
 DEPARTMENT OF TRANSPORTATION**

**STAGING PLANS - STAGE II
 TORRENCE AVE OVER IHB AND B&OCT RAILROAD**

F.A.P. RTE. 358	SECTION 2020-006-BR	COUNTY COOK	TOTAL SHEETS 26	SHEET NO. 9
ILLINOIS FED. AID PROJECT			CONTRACT NO. 62K72	

SCALE: SHEET 2 OF 3 SHEETS STA. TO STA.



- SYMBOLS**
- Arrow board
 - Cone, drum or barricade
 - Drum with flashing lights
 - Sign on portable or permanent support
 - Work area
 - Type III barricade with flashing lights
 - Impact attenuator

MODEL: Default
 FILE: \\s:\planroom\dot\illinois.gov\PHUDOT\Documents\DOT_Offices\District_1\Projects\138420\CADD\Drawings\138420-sh-staging.dgn

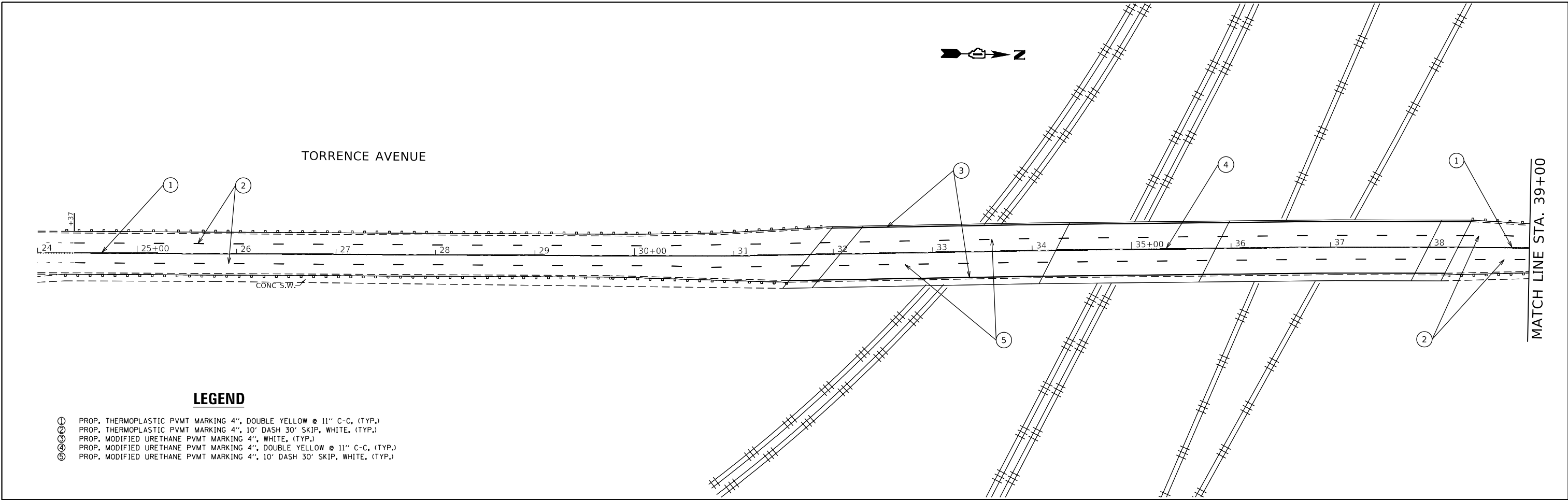
USER NAME = rothjp	DESIGNED -	REVISED -
DRAWN -	REVISOR -	
PLOT SCALE = 100.1148' / in.	CHECKED -	REVISOR -
PLOT DATE = 3/24/2020	DATE -	REVISOR -

STATE OF ILLINOIS
DEPARTMENT OF TRANSPORTATION

STAGING PLANS - STAGE II
TORRENCE AVE OVER IHB AND B&OCT RAILROAD

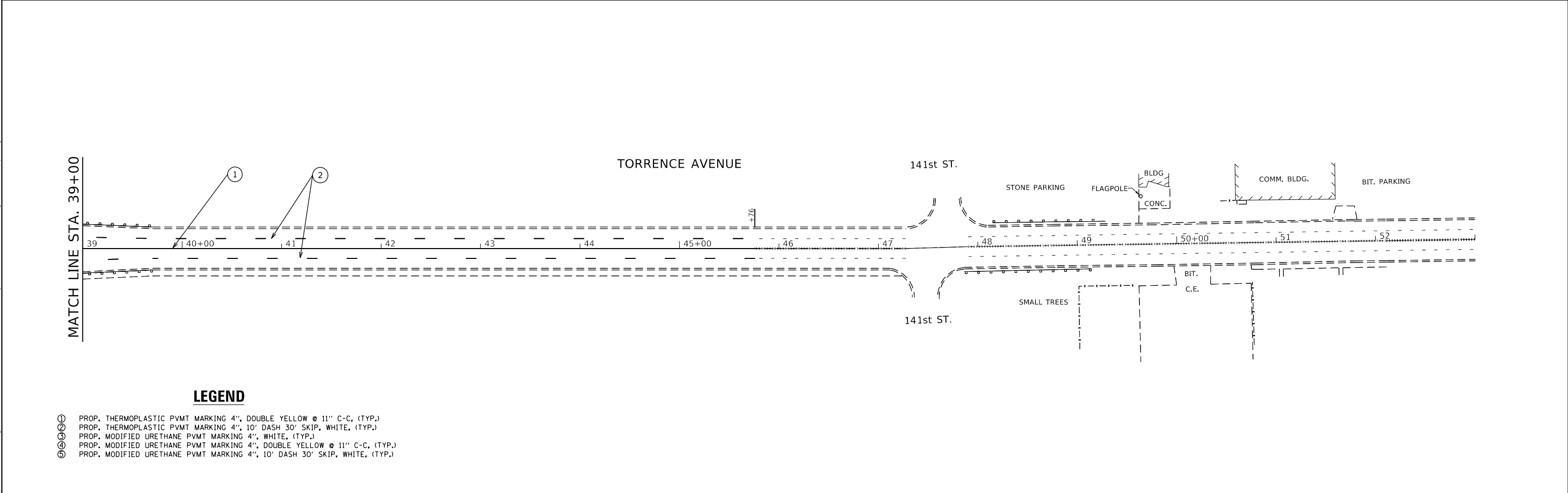
SCALE: SHEET 3 OF 3 SHEETS STA. TO STA.

F.A.P. RTE. 358	SECTION 2020-006-BR	COUNTY COOK	TOTAL SHEETS 26	SHEET NO. 10
CONTRACT NO. 62K72			ILLINOIS FED. AID PROJECT	



LEGEND

- ① PROP. THERMOPLASTIC PVMT MARKING 4", DOUBLE YELLOW @ 11" C-C, (TYP.)
- ② PROP. THERMOPLASTIC PVMT MARKING 4", 10' DASH 30' SKIP, WHITE, (TYP.)
- ③ PROP. MODIFIED URETHANE PVMT MARKING 4", WHITE, (TYP.)
- ④ PROP. MODIFIED URETHANE PVMT MARKING 4", DOUBLE YELLOW @ 11" C-C, (TYP.)
- ⑤ PROP. MODIFIED URETHANE PVMT MARKING 4", 10' DASH 30' SKIP, WHITE, (TYP.)



LEGEND

- ① PROP. THERMOPLASTIC PVMT MARKING 4", DOUBLE YELLOW @ 11" C-C, (TYP.)
- ② PROP. THERMOPLASTIC PVMT MARKING 4", 10' DASH 30' SKIP, WHITE, (TYP.)
- ③ PROP. MODIFIED URETHANE PVMT MARKING 4", WHITE, (TYP.)
- ④ PROP. MODIFIED URETHANE PVMT MARKING 4", DOUBLE YELLOW @ 11" C-C, (TYP.)
- ⑤ PROP. MODIFIED URETHANE PVMT MARKING 4", 10' DASH 30' SKIP, WHITE, (TYP.)

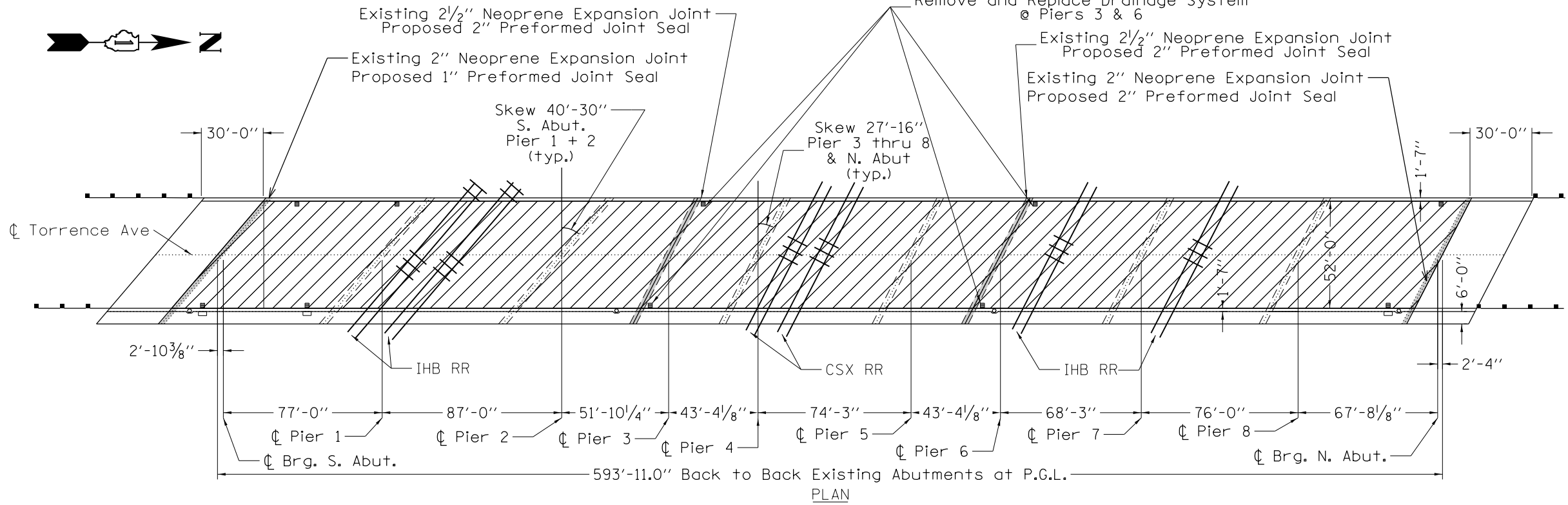
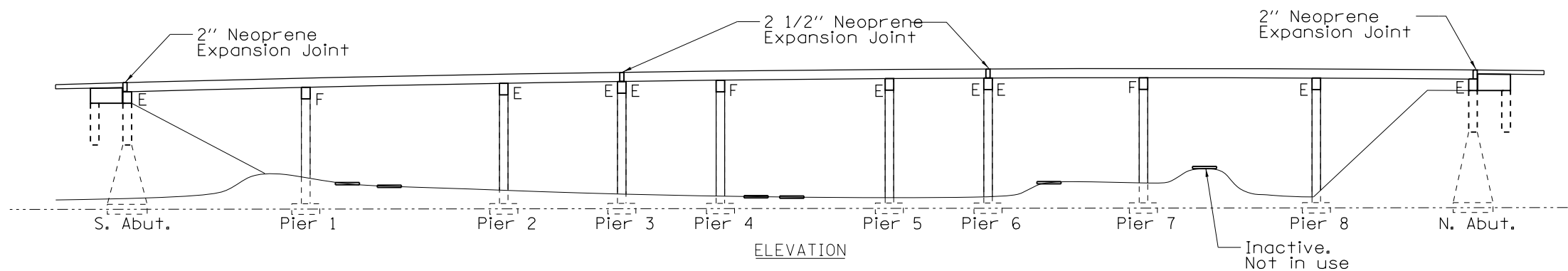
MODEL: Default
 FILE: h:\m\p\pub\barroom.dwg
 PROJECT: I:\Projects\138420\CADD\Drawings\DOT\Office\138420\138420-sh-c-lan.dwg

USER NAME = rothjp	DESIGNED -	REVISED -
PLOT SCALE = 100,0000' / in.	DRAWN -	REVISED -
PLOT DATE = 3/24/2020	CHECKED -	REVISED -
	DATE -	REVISED -

**STATE OF ILLINOIS
DEPARTMENT OF TRANSPORTATION**

ROADWAY PLAN			
TORRENCE AVENUE OVER IHB AND B&OCT RAILROAD			
SCALE: 1"= 50'	SHEET 1	OF 1 SHEETS	STA. 10+00.00 TO STA. 40+00.00

F.A.P. RTE. 358	SECTION 2020-006-BR	COUNTY COOK	TOTAL SHEETS 26	SHEET NO. 11
CONTRACT NO. 62K72			ILLINOIS FED. AID PROJECT	



- PROPOSED PREFORMED JOINT SEAL
- PROPOSED CONCRETE BRIDGE DECK SCARIFICATION 3/8"
- PROPOSED BRIDGE DECK THIN POLYMER OVERLAY 3/8"

TOTAL BILL OF MATERIALS	
Concrete Bridge Deck Scarification 3/8"	3432 SY
Bridge Deck Thin Polymer Overlay 3/8"	3432 SY
Polymer Concrete	30 CF
Structural Repair Concrete < 5"	209 SF
Prefomed Joint Seal, 1"	81 LF
Prefomed Joint Seal, 2"	207 LF
Bridge Drain System Repair	120 LF
Bridge Deck Concrete Sealer	10876 SF

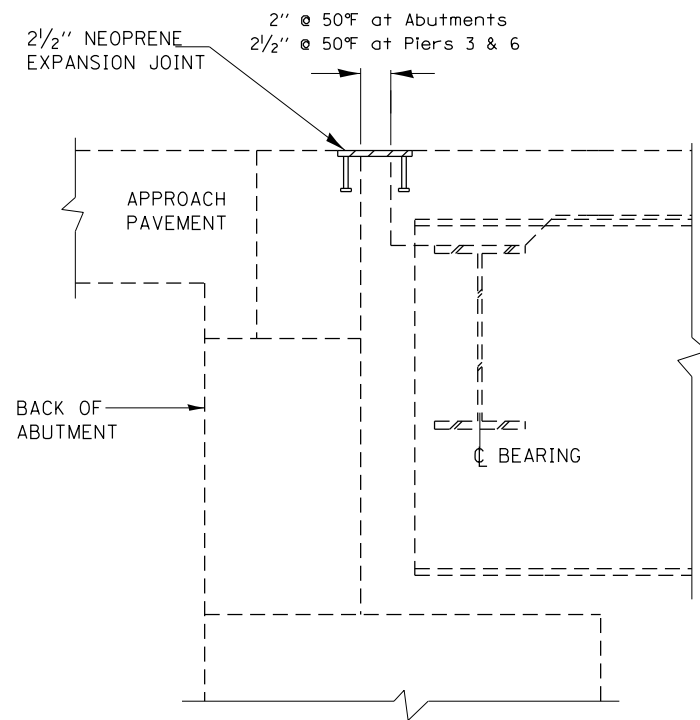


Expires 11-30-2020
David Carl Puzev
 5/11/2020

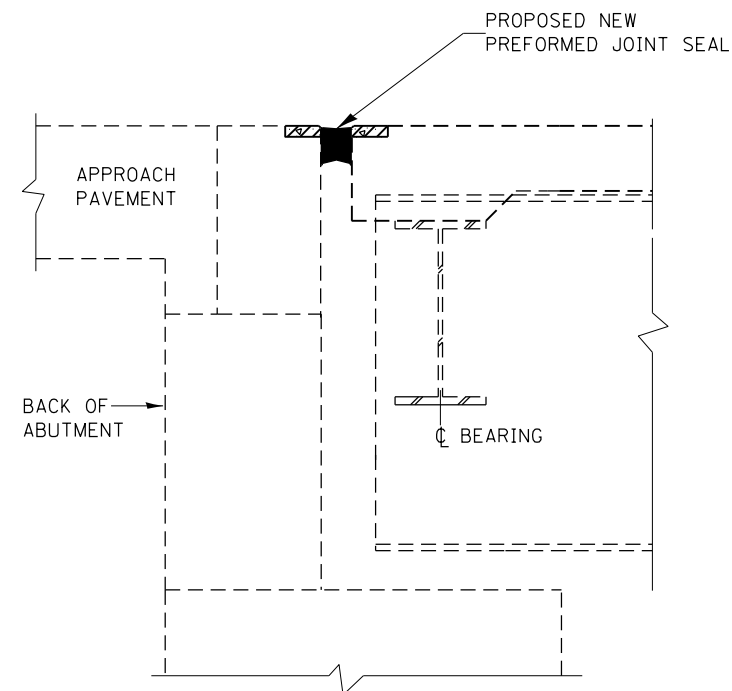
GENERAL NOTES:

1. PRIOR TO THE POURING OF NEW CONCRETE, ALL HEAVY OR LOOSE RUST, LOOSE MILL SCALE, AND OTHER LOOSE OR POTENTIALLY DETRIMENTAL FOREIGN MATERIAL SHALL BE REMOVED FROM THE SURFACES IN CONTACT WITH CONCRETE. TIGHTLY ADHERED PAINT MAY REMAIN UNLESS OTHERWISE NOTED. REMOVAL SHALL BE ACCOMPLISHED BY METHODS THAT WILL NOT DAMAGE THE STEEL AND THE COST WILL BE INCLUDED IN THE PAY ITEM COVERING REMOVAL OF THE EXISTING CONCRETE.
2. PLAN DIMENSIONS AND DETAIL RELATIVE TO EXISTING PLANS ARE SUBJECT TO NOMINAL CONSTRUCTION VARIABLES. THE CONTRACTOR SHALL FIELD VERIFY EXISTING DIMENSIONS AND DETAILS AFFECTING NEW CONSTRUCTION AND MAKE NECESSARY APPROVED ADJUSTMENTS PRIOR TO CONSTRUCTION OR ORDERING OF MATERIALS. SUCH VARIATIONS SHALL NOT BE CAUSE FOR ADDITIONAL COMPENSATION FOR A CHANGE IN SCOPE OF THE WORK. HOWEVER, THE CONTRACTOR WILL BE PAID FOR THE QUANTITY ACTUALLY FURNISHED AT THE UNIT PRICE BID FOR THE WORK.
3. CONCRETE SEALER TO BE APPLIED ON TOP OF SIDEWALKS AND TOP AND FRONT FACE OF PARAPETS
4. REPAIR AREAS ARE ESTIMATED. THE ENGINEER SHALL DETERMINE ACTUAL REPAIR LOCATIONS AND RECORD THEM ON THE AS-BUILT PLANS.
5. JOINT OPENINGS SHALL BE ADJUSTED ACCORDING TO ARTICLE 520.04 OF THE STANDARD SPECIFICATIONS WHEN THE DECK IS POURED AT AN AMBIENT TEMPERATURE OTHER THAN 50° F

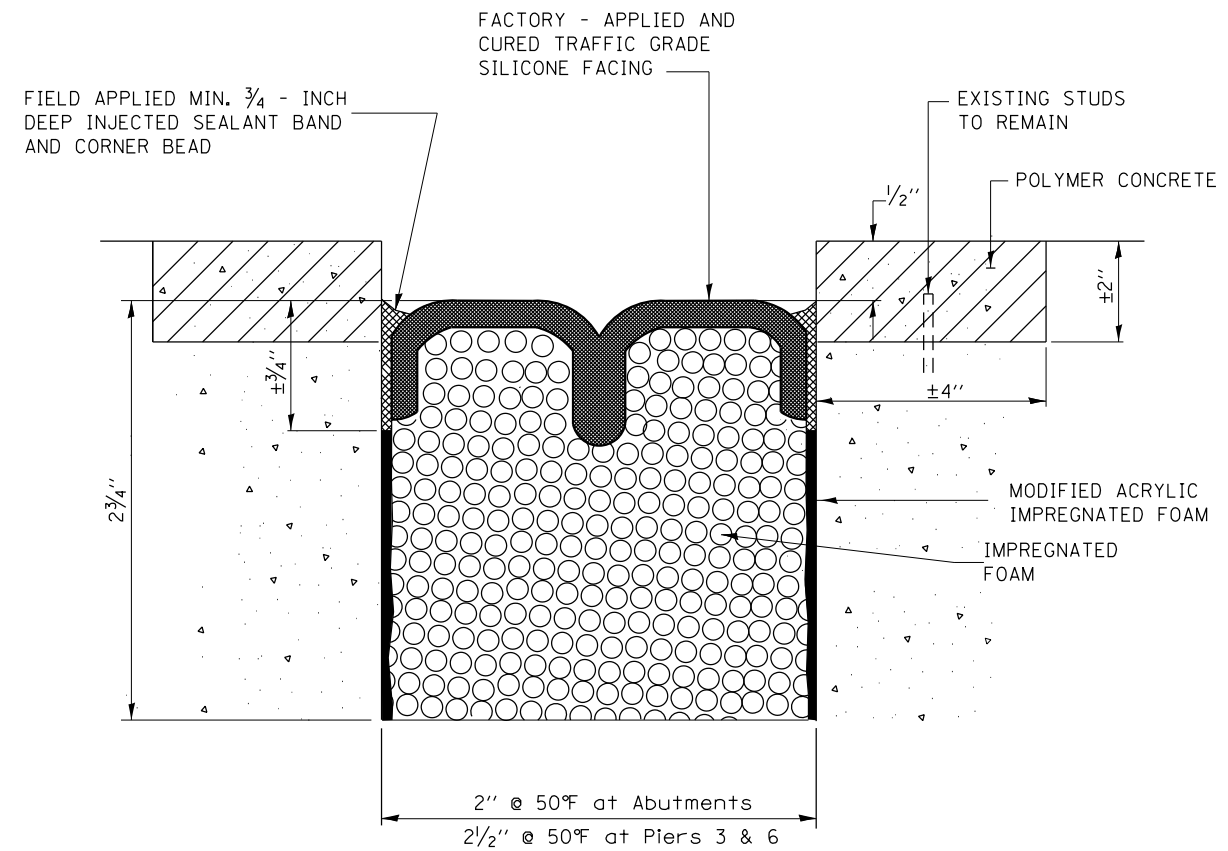
MODEL: Default
 FILE: Model - Propubamroom.dwg
 PROJECT: D:\Projects\138220\138220\138220\138220\138220.dwg
 PROJECT: D:\Projects\138220\138220\138220\138220\138220.dwg



**EXISTING PREFORMED JOINT
AT NORTH AND SOUTH ABUTMENTS**



**PROPOSED NEW PREFORMED JOINT SEAL
AT NORTH AND SOUTH ABUTMENTS**



**PREFORMED JOINT SEAL
AT NORTH, SOUTH ABUTMENTS, PIERS 3 & 6**

BILL OF MATERIALS

	Item	Unit	Quantity
S. Abut.	Preformed Joint Seal, 1"	Foot	81
N. Abut., Pier 3 & Pier 6	Preformed Joint Seal, 2"	Foot	207
	Polymer Concrete	Cu. Ft.	30

NOTES:

1. JOINT SEALS SHALL BE PREFORMED PRE-COMPRESSED, SILICONE COATED SELF-EXPANDING SEALANT SYSTEM.
2. THE REMOVAL OF THE EXISTING JOINT IS INCLUDED IN THE COST OF THE POLYMER CONCRETE

MODEL: Default
 FILE: \\blm1c1.pw.us\blm1c1\pww\DOT\Documents\DOT - Offices\District 1\Projects\138420\CADD\Drawings\138420-ec\br.r.dgn

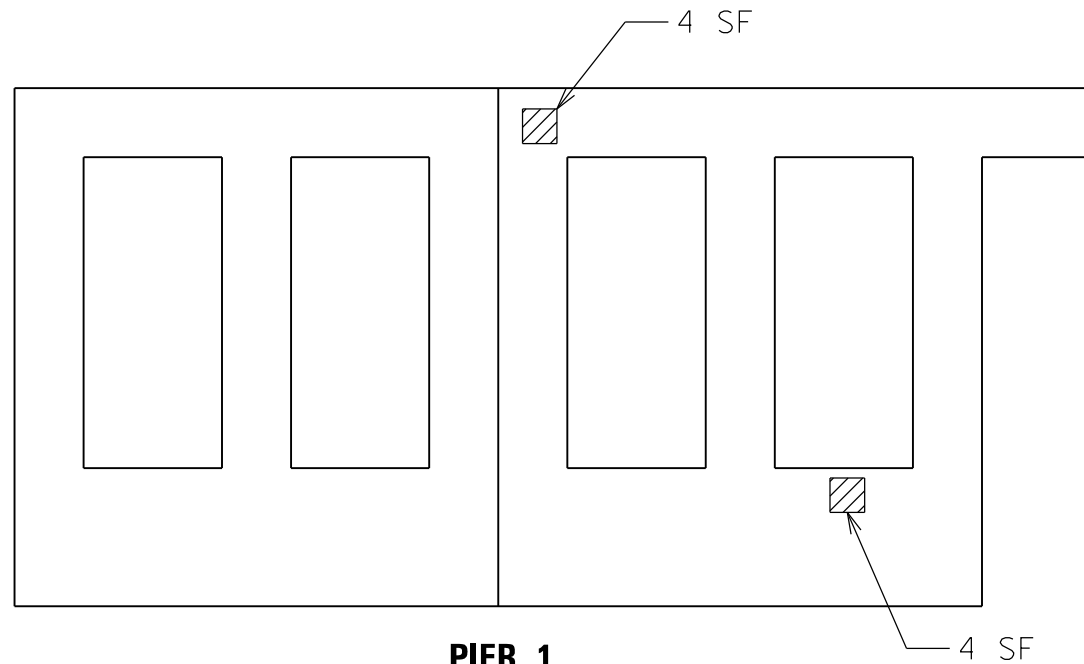
USER NAME = midyja	DESIGNED -	REVISED -
PLOT SCALE = 49.9976 ' / in.	DRAWN -	REVISED -
PLOT DATE = 5/8/2020	CHECKED -	REVISED -
	DATE -	REVISED -

**STATE OF ILLINOIS
DEPARTMENT OF TRANSPORTATION**

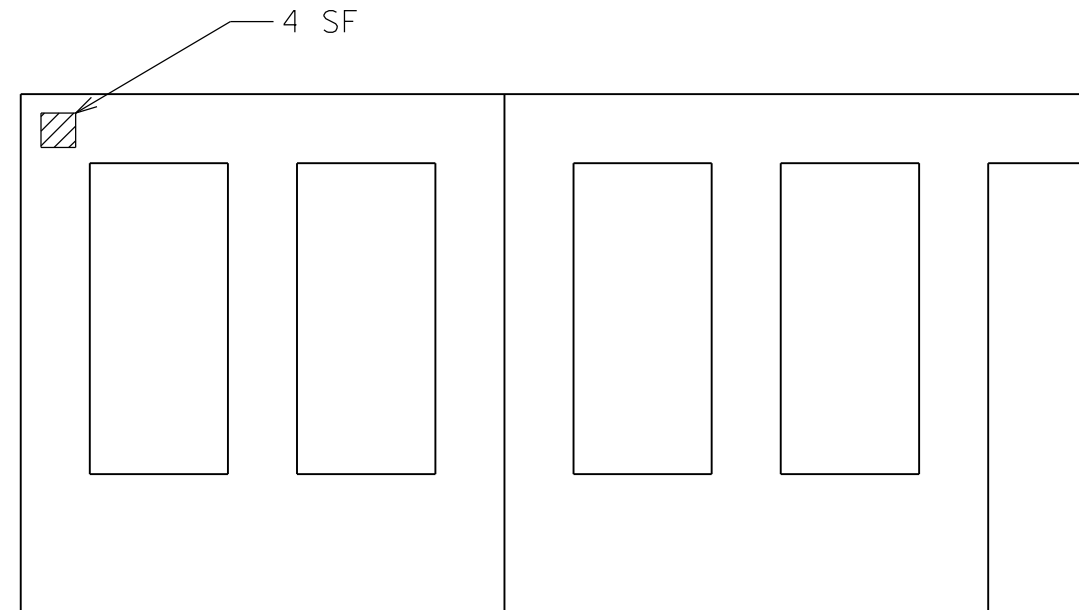
**PROPOSED BRIDGE JOINT REPAIRS (SN 016-0935)
TORRENCE AVE OVER IHB AND B&OCT RAILROAD**

SCALE: SHEET 2 OF 10 SHEETS STA. TO STA.

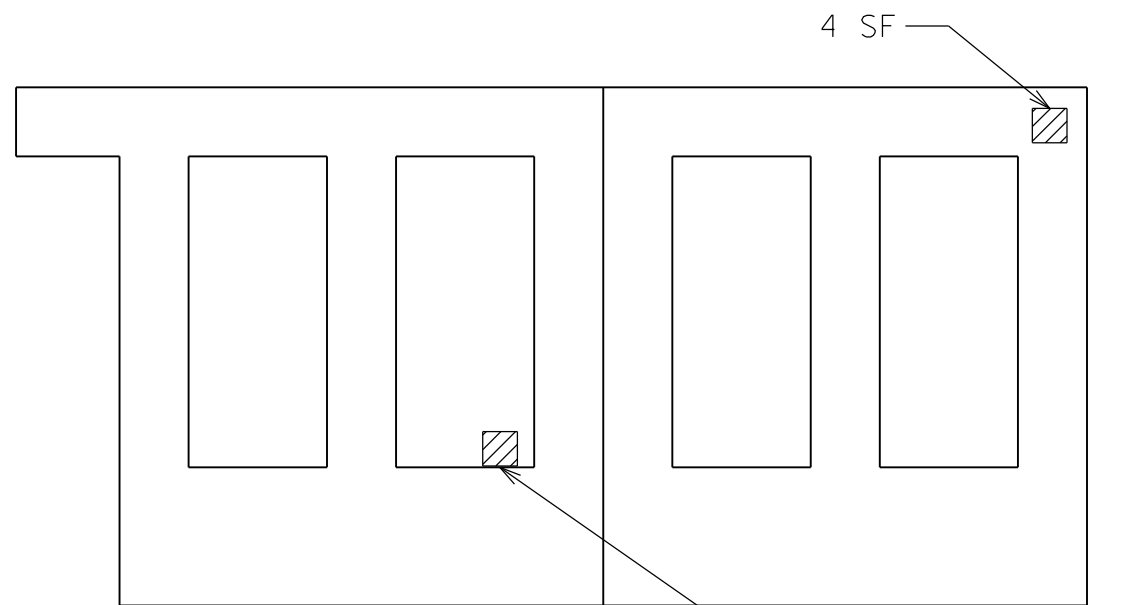
F.A.P. RTE.	SECTION	COUNTY	TOTAL SHEETS	SHEET NO.
358	2020-006-BR	COOK	26	13
			CONTRACT NO. 62K72	
			ILLINOIS FED. AID PROJECT	



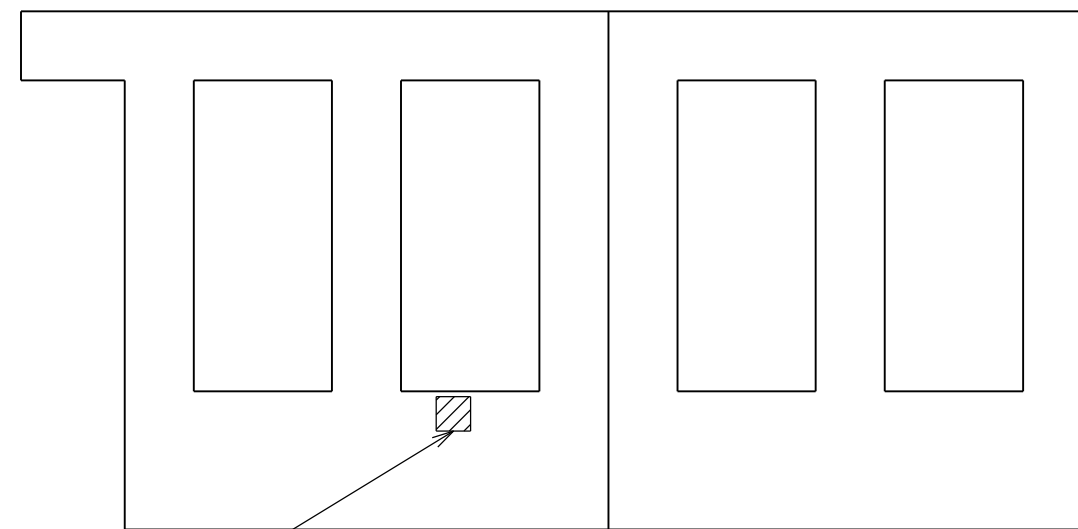
PIER 1
(SOUTH FACE)



PIER 2
(SOUTH FACE)



PIER 1
(NORTH FACE)
4 SF (Top Face of Wall)



PIER 2
(NORTH FACE)
4 SF

BILL OF MATERIALS	
Structural Repair Concrete < 5"	24 SF

 PROPOSED STRUCTURAL REPAIR CONCRETE ≤ 5"

MODEL: Default
 FILE: \\blm1c1-prod\blm1c1\p001\DOT\Documents\DOT_Offices\blm1c1\1\Projects\138420\CADD\Drawings\138420-ecpa1r.dgn

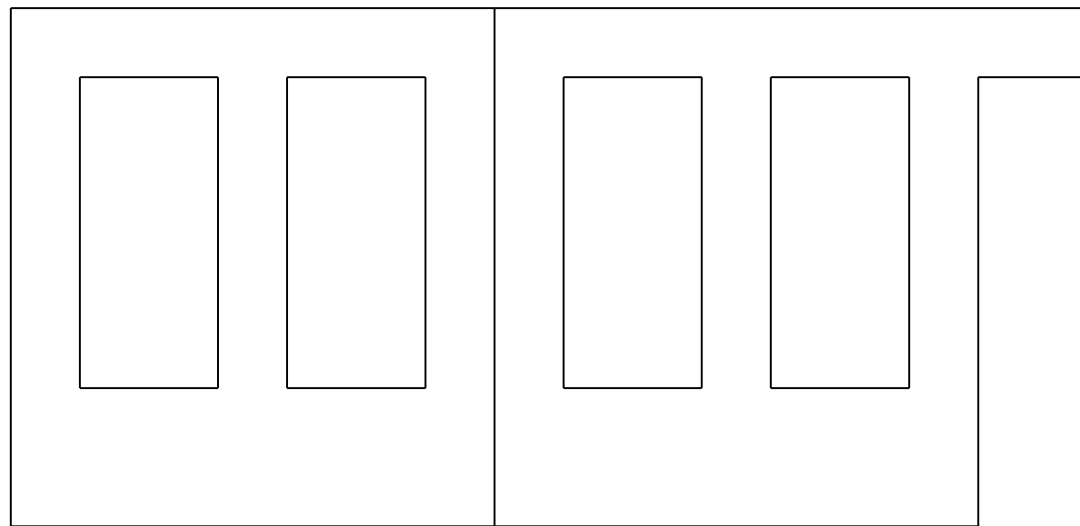
USER NAME = midyja	DESIGNED -	REVISED -
PLOT SCALE = 49.9976 ' / in.	DRAWN -	REVISED -
PLOT DATE = 5/8/2020	CHECKED -	REVISED -
	DATE -	REVISED -

STATE OF ILLINOIS
DEPARTMENT OF TRANSPORTATION

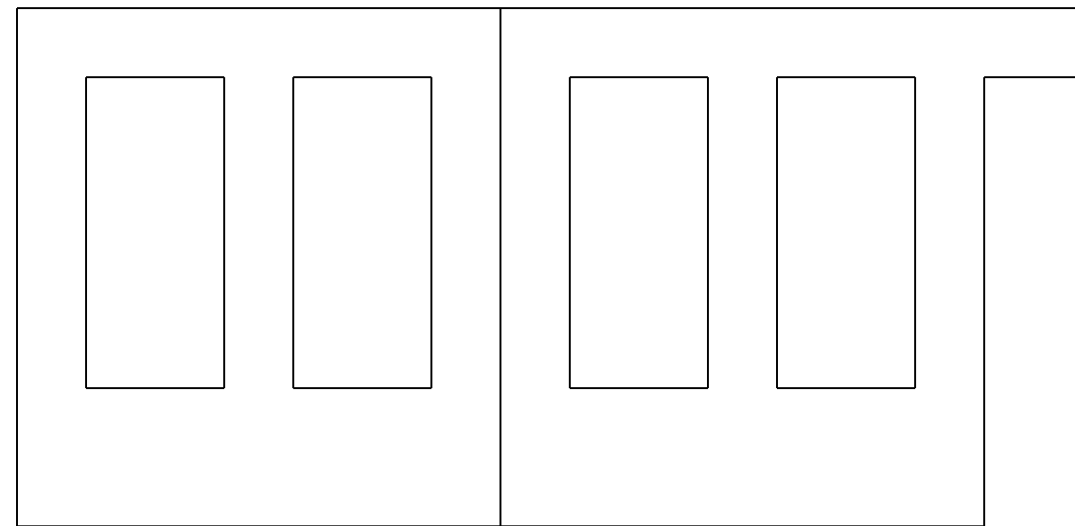
PROPOSED SUBSTRUCTURE REPAIRS (SN 016-0935)
TORRENCE AVE OVER IHB AND B&OCT RAILROAD

SCALE: SHEET 3 OF 10 SHEETS STA. TO STA.

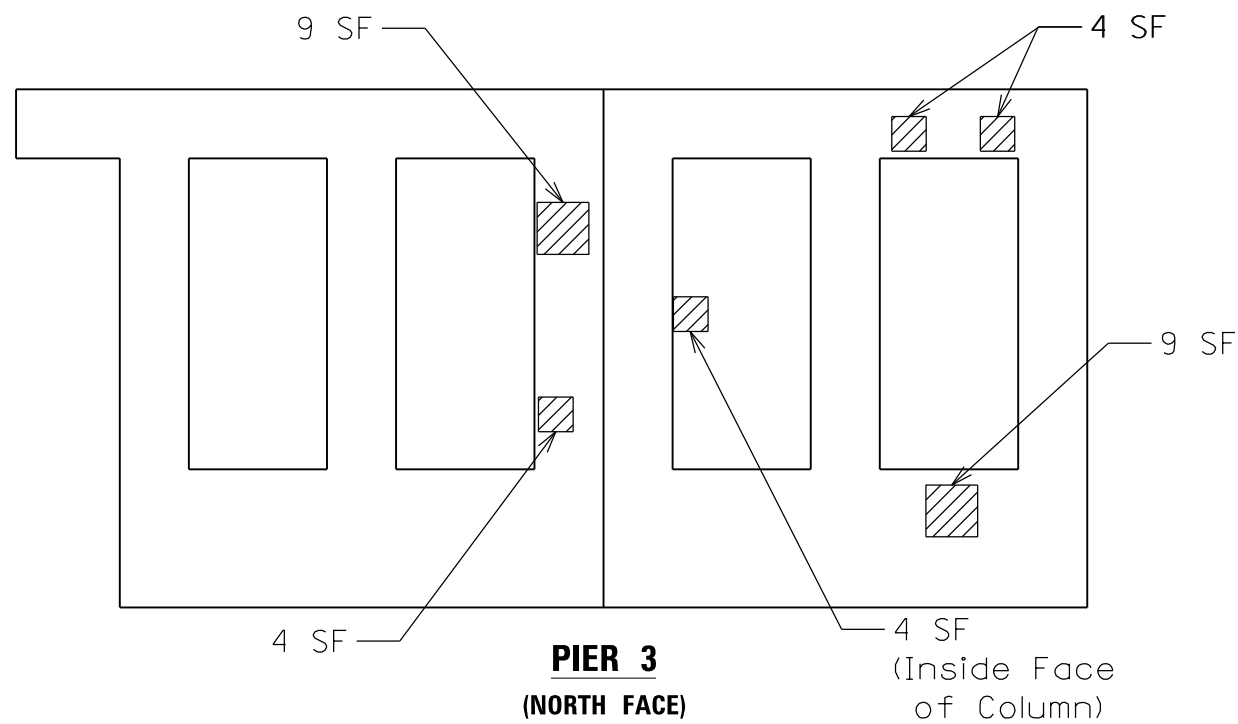
F.A.P. RTE.	SECTION	COUNTY	TOTAL SHEETS	SHEET NO.
358	2020-006-BR	COOK	26	14
				CONTRACT NO. 62K72
		ILLINOIS	FED. AID PROJECT	



PIER 3
(SOUTH FACE)

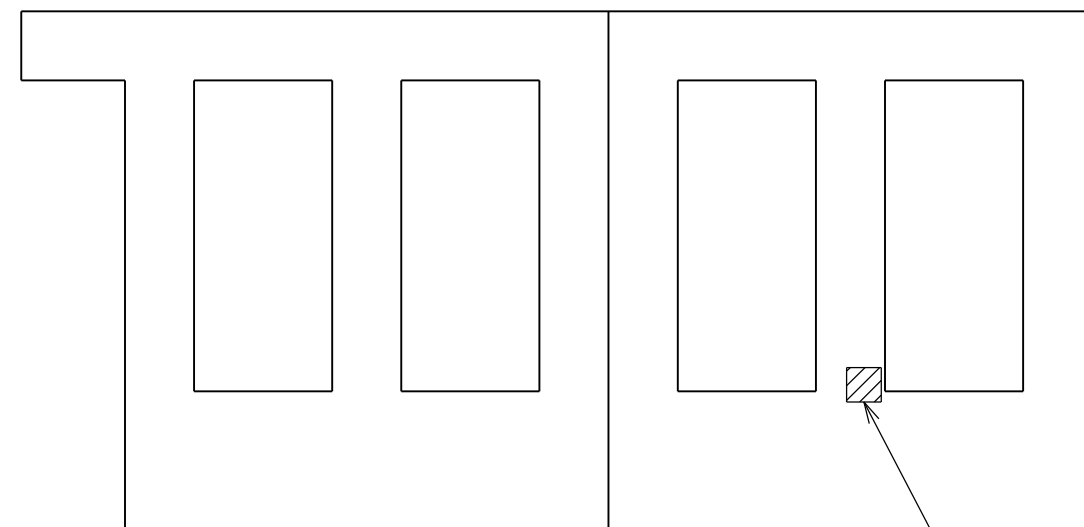


PIER 4
(SOUTH FACE)



PIER 3
(NORTH FACE)

4 SF
(Inside Face
of Column)



PIER 4
(NORTH FACE)

4 SF

BILL OF MATERIALS	
Structural Repair Concrete < 5"	38 SF

 PROPOSED STRUCTURAL REPAIR CONCRETE ≤ 5"

MODEL: Default
 FILE: \\blm1c1-pub\blm1room\ada\illinois.gov\PWIDOT\Documents\DOT_Offices\District_1\Projects\138420\CADD\Drawings\138420-ec\pa3r.dgn

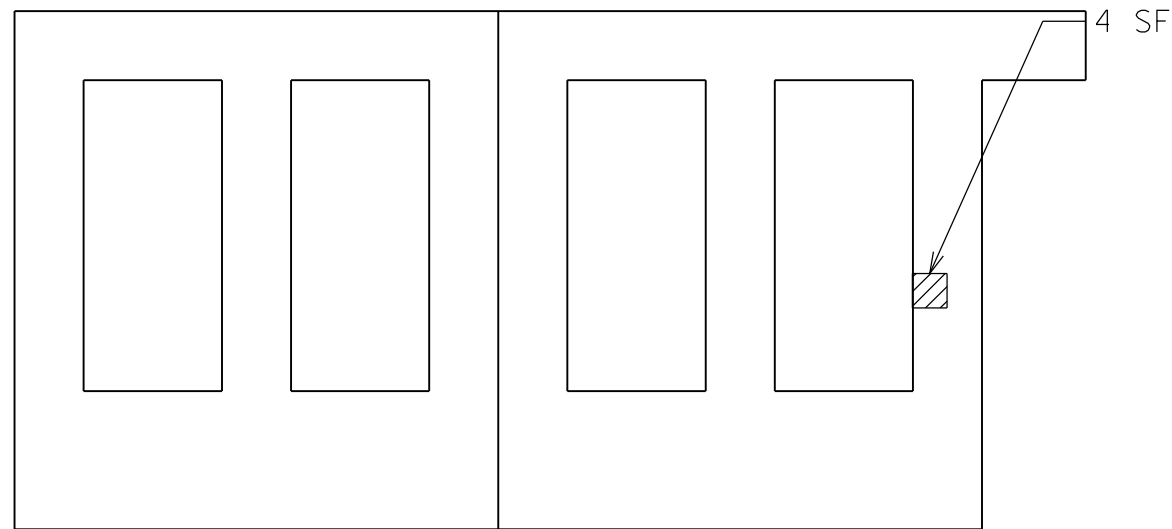
USER NAME = midyja	DESIGNED -	REVISED -
	DRAWN -	REVISED -
PLOT SCALE = 49.9976 ' / in.	CHECKED -	REVISED -
PLOT DATE = 5/8/2020	DATE -	REVISED -

STATE OF ILLINOIS
DEPARTMENT OF TRANSPORTATION

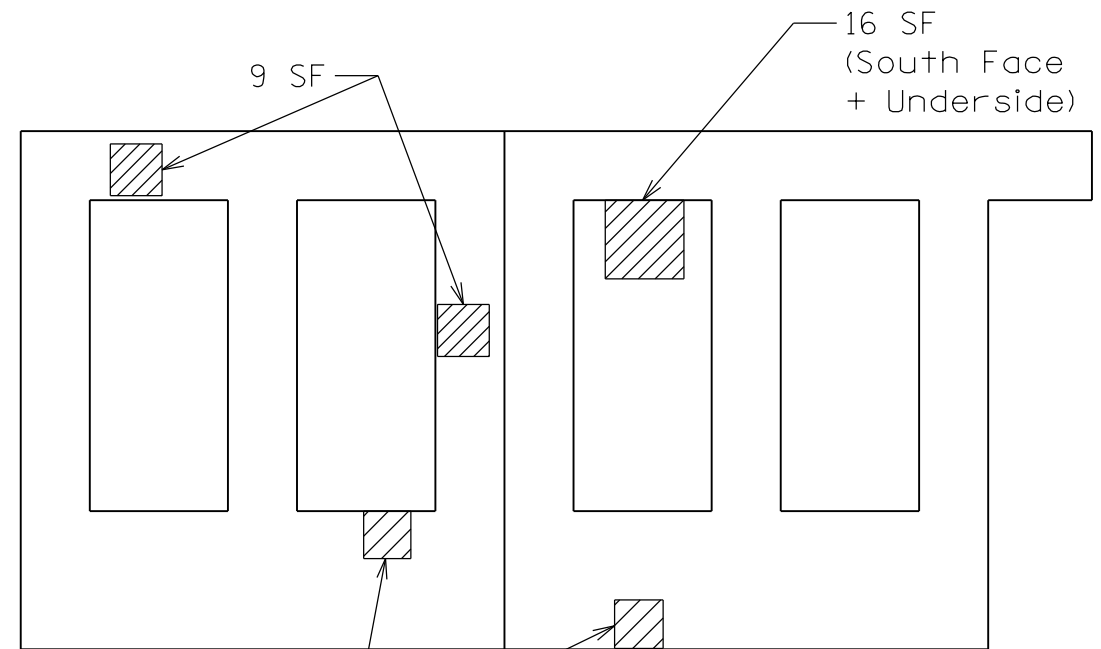
PROPOSED SUBSTRUCTURE REPAIRS (SN 016-0935)
TORRENCE AVE OVER IHB AND B&OCT RAILROAD

SCALE: SHEET 4 OF 10 SHEETS STA. TO STA.

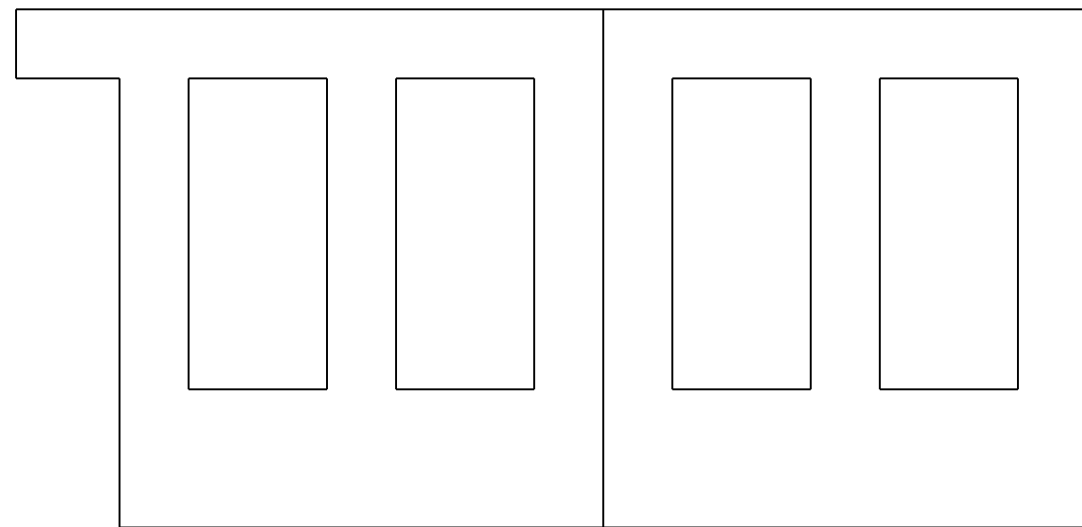
F.A.P. RTE.	SECTION	COUNTY	TOTAL SHEETS	SHEET NO.
358	2020-006-BR	COOK	26	15
CONTRACT NO. 62K72				
ILLINOIS FED. AID PROJECT				



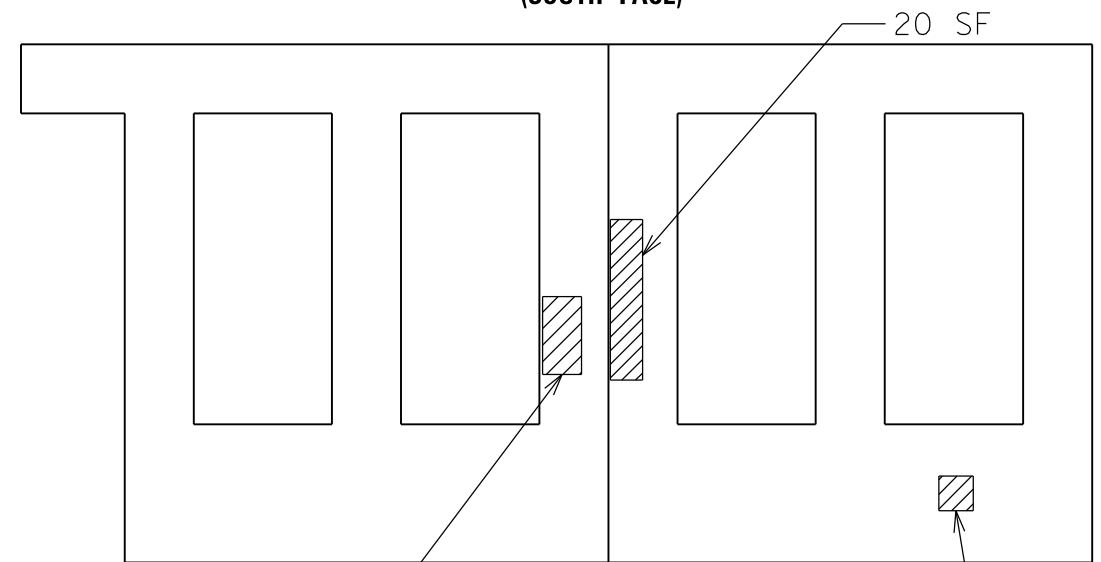
**PIER 5
(SOUTH FACE)**



**PIER 6
(SOUTH FACE)**



**PIER 5
(NORTH FACE)**



**PIER 6
(NORTH FACE)**

BILL OF MATERIALS	
Structural Repair Concrete < 5"	78 SF

 PROPOSED STRUCTURAL REPAIR CONCRETE ≤ 5"

MODEL: Default
FILE: \\hpc\p\pub\hpc\room\dat\illinois\gov\p\pub\dot\Documents\DOT_Offices\District_1\Projects\138420\CADD\Design\138420-ec\p\tr.dgn

USER NAME = midyja	DESIGNED -	REVISED -
PLOT SCALE = 49.9976 ' / in.	DRAWN -	REVISED -
PLOT DATE = 5/8/2020	CHECKED -	REVISED -
	DATE -	REVISED -

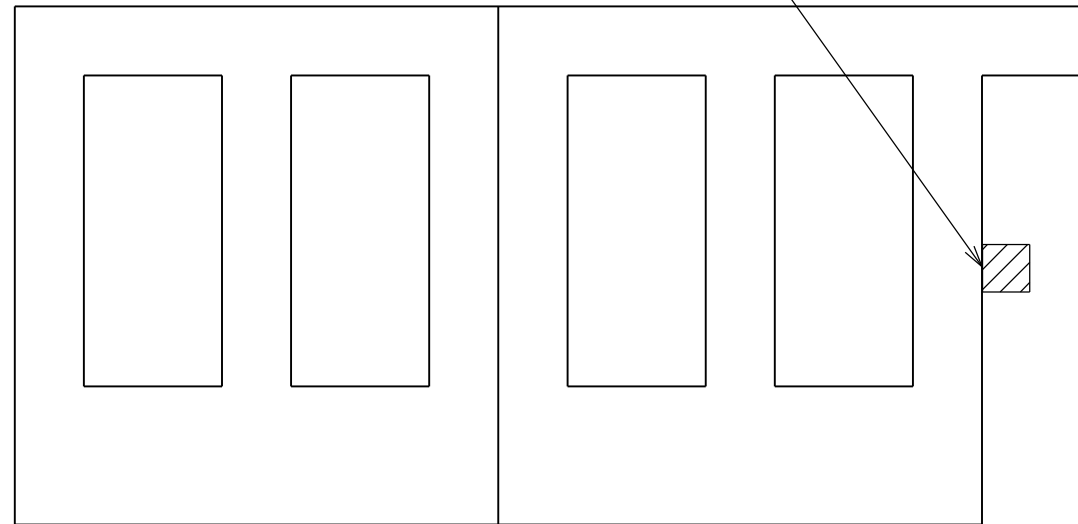
**STATE OF ILLINOIS
DEPARTMENT OF TRANSPORTATION**

**PROPOSED SUBSTRUCTURE REPAIRS (SN 016-0935)
TORRENCE AVE OVER IHB AND B&OCT RAILROAD**

SCALE: SHEET 5 OF 10 SHEETS STA. TO STA.

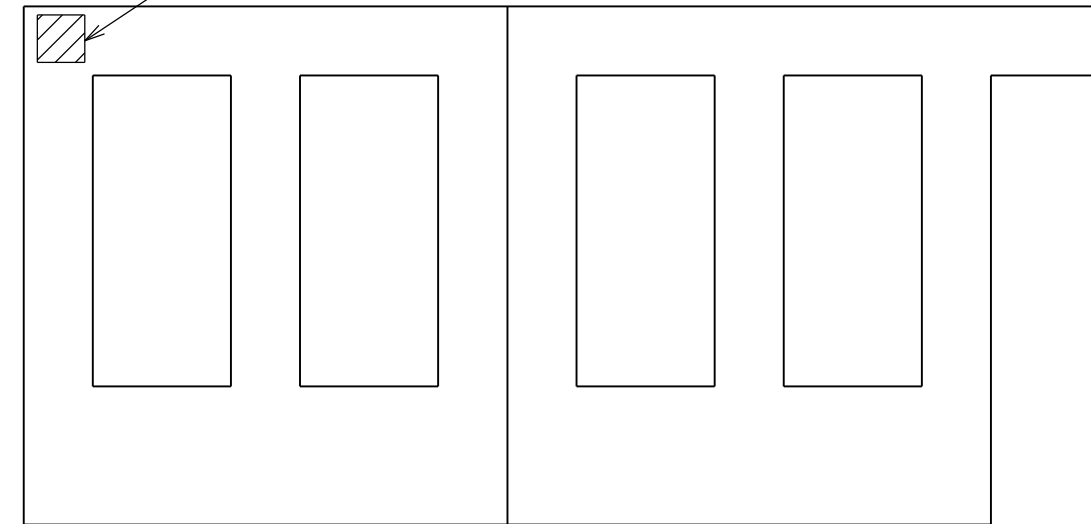
F.A.P. RTE.	SECTION	COUNTY	TOTAL SHEETS	SHEET NO.
358	2020-006-BR	COOK	26	16
ILLINOIS FED. AID PROJECT			CONTRACT NO. 62K72	

4 SF
(Outside Face)



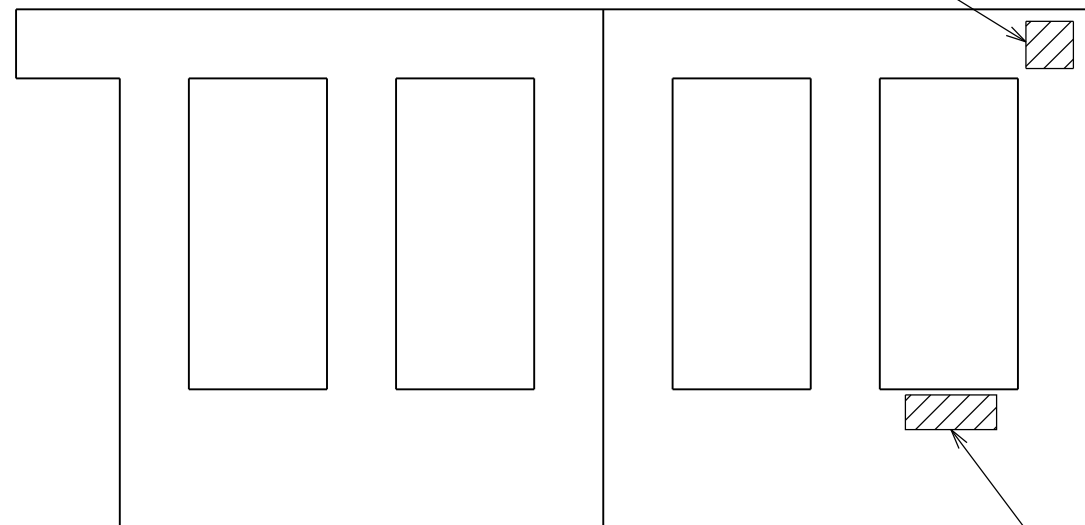
PIER 7
(SOUTH FACE)

4 SF



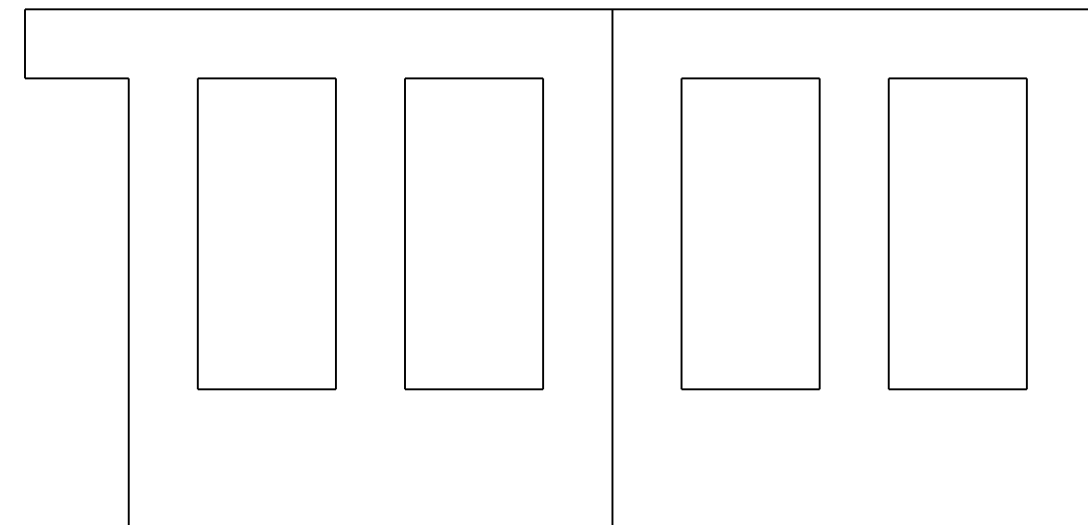
PIER 8
(SOUTH FACE)

4 SF



PIER 7
(NORTH FACE)

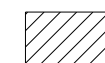
6 SF



PIER 8
(NORTH FACE)

BILL OF MATERIALS

Structural Repair Concrete < 5"	18 SF
---------------------------------	-------



PROPOSED STRUCTURAL REPAIR CONCRETE ≤ 5"

MODEL: Default
 FILE: \\nrc\c:\pub\harcam\dat\illinois\gov\pww\DOT\Documents\DOT_Offices\Illndtct_1\Projects\138420\CADD\Drawings\138420-arc\p1r.dgn

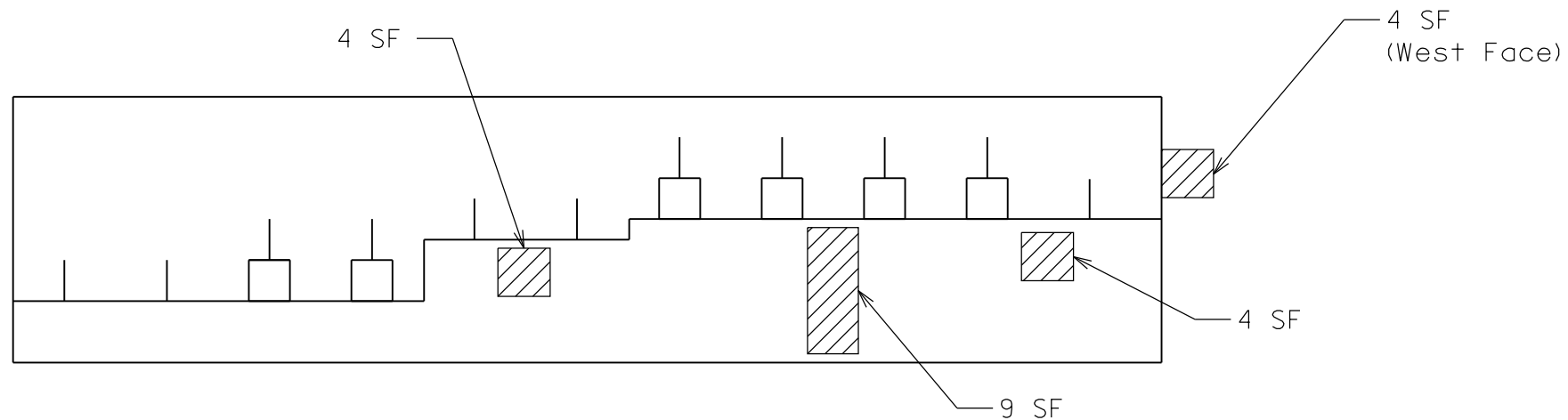
USER NAME = midyja	DESIGNED -	REVISED -
PLOT SCALE = 50.0024 ' / in.	DRAWN -	REVISED -
PLOT DATE = 5/8/2020	CHECKED -	REVISED -
	DATE -	REVISED -

STATE OF ILLINOIS
DEPARTMENT OF TRANSPORTATION

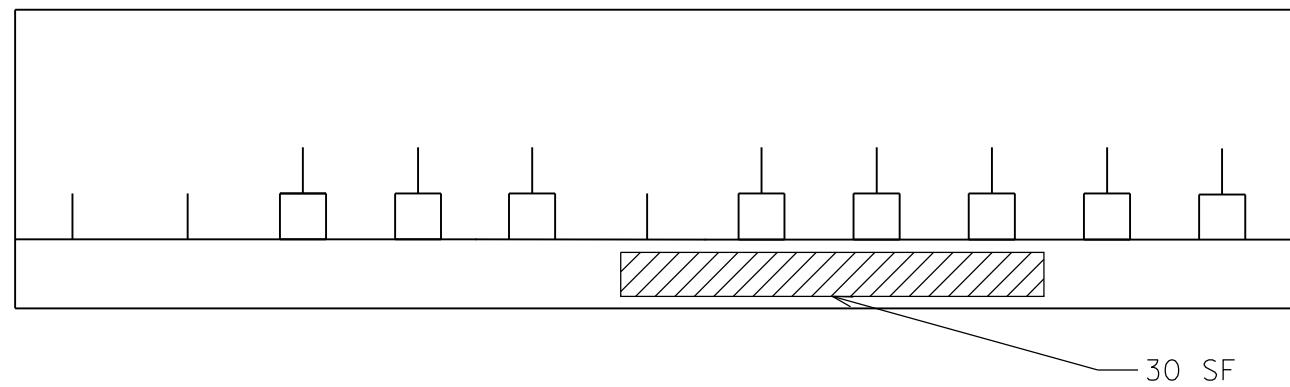
PROPOSED SUBSTRUCTURE REPAIRS (SN 016-0935)
TORRENCE AVE OVER IHB AND B&OCT RAILROAD

SCALE: SHEET 6 OF 10 SHEETS STA. TO STA.

F.A.P. RTE.	SECTION	COUNTY	TOTAL SHEETS	SHEET NO.
358	2020-006-BR	COOK	26	17
ILLINOIS FED. AID PROJECT			CONTRACT NO. 62K72	



SOUTH ABUTMENT



NORTH ABUTMENT

BILL OF MATERIALS	
Structural Repair Concrete < 5"	51 SF

 PROPOSED STRUCTURAL REPAIR CONCRETE ≤ 5"

MODEL: Default
 FILE: \\miller-prod\pub\room.dwg
 PROJECT: \\miller-prod\pub\room.dwg
 PLOT DATE: 5/8/2020

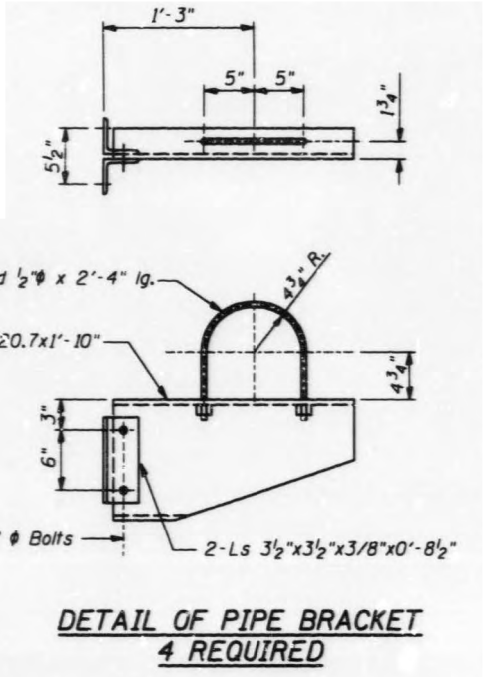
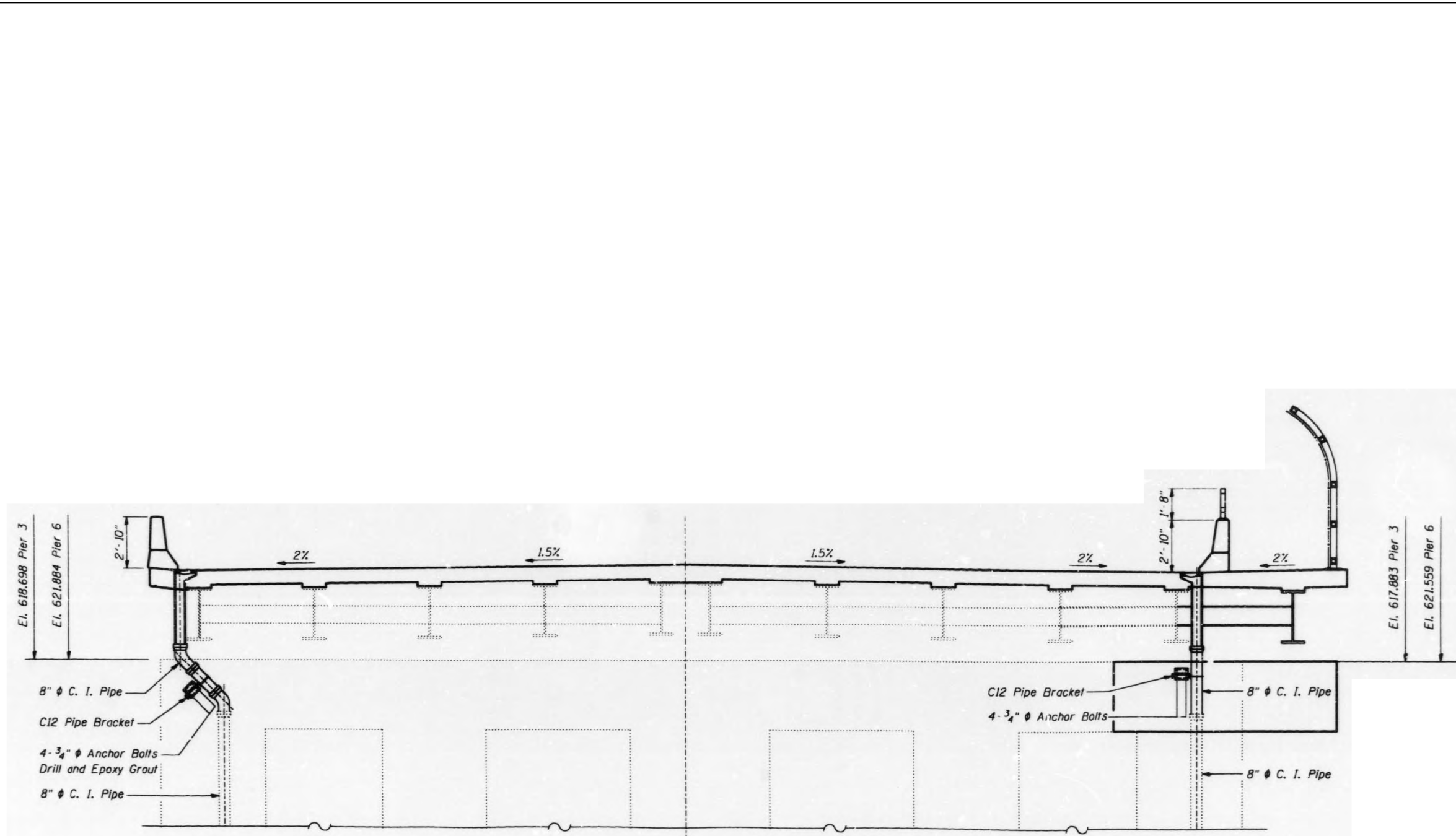
USER NAME = midyja	DESIGNED -	REVISED -
	DRAWN -	REVISED -
PLOT SCALE = 50.0024 ' / in.	CHECKED -	REVISED -
PLOT DATE = 5/8/2020	DATE -	REVISED -

**STATE OF ILLINOIS
DEPARTMENT OF TRANSPORTATION**

**PROPOSED SUBSTRUCTURE REPAIRS (SN 016-0935)
TORRENCE AVE OVER IHB AND B&OCT RAILROAD**

SCALE: SHEET 7 OF 10 SHEETS STA. TO STA.

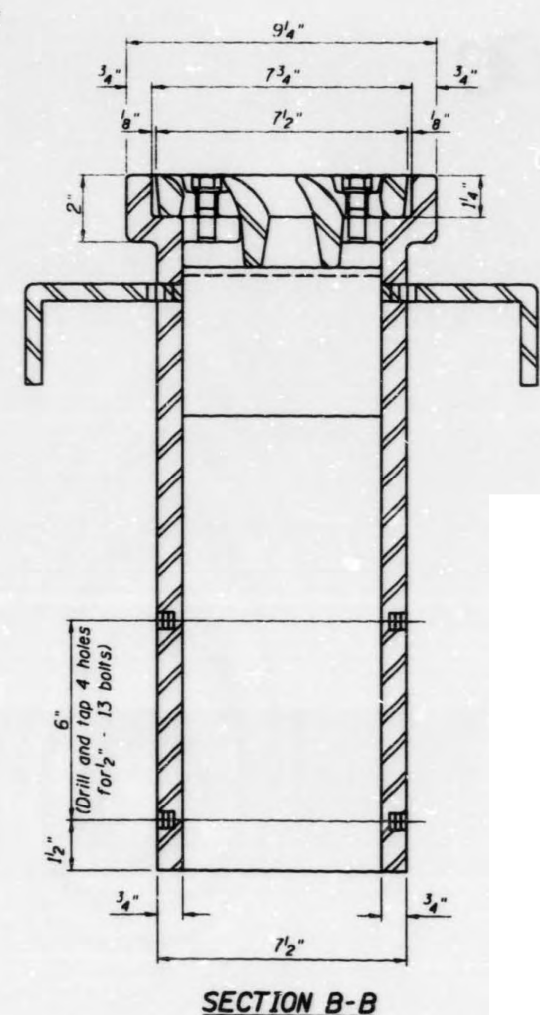
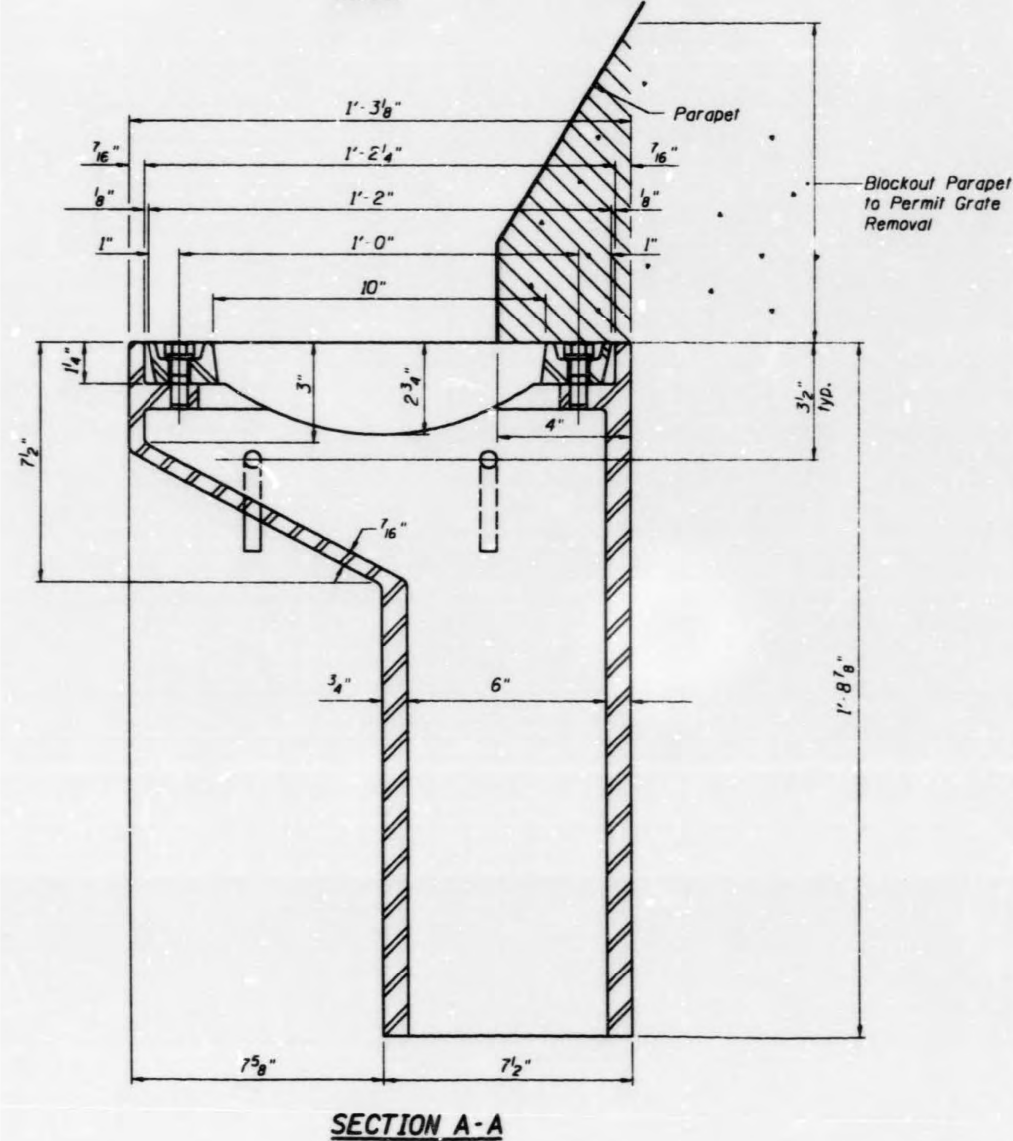
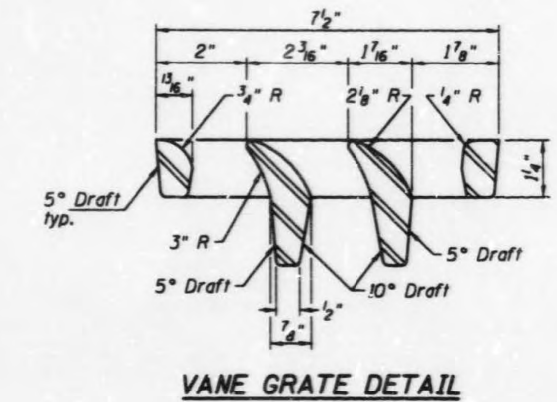
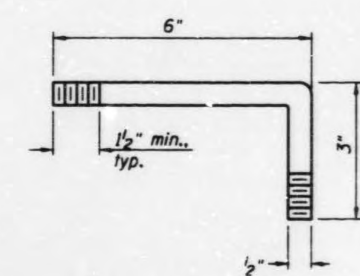
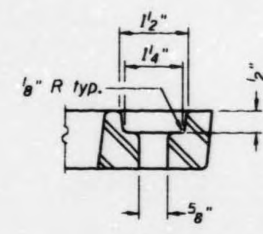
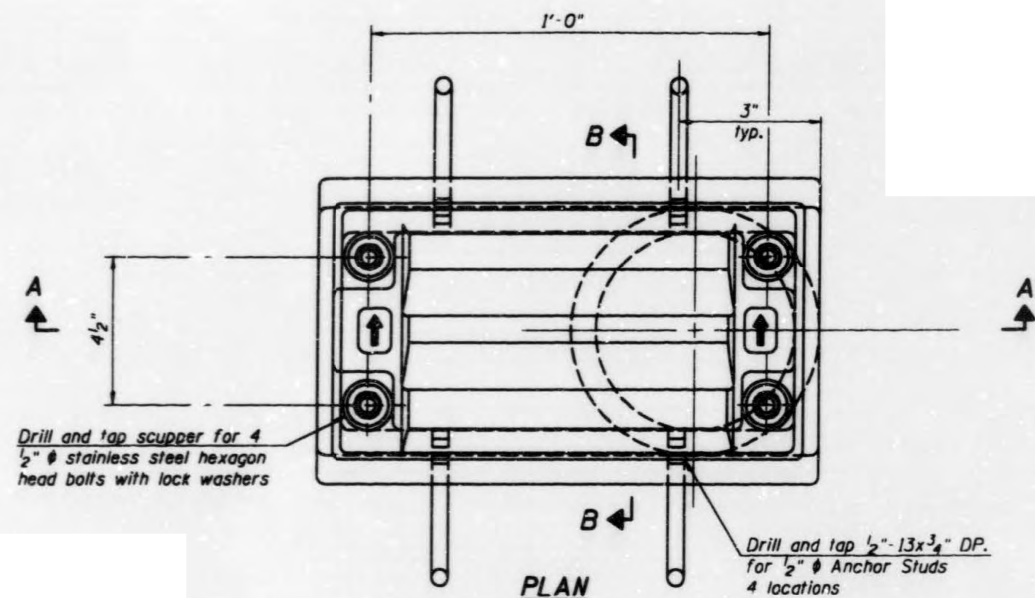
F.A.P. RTE.	SECTION	COUNTY	TOTAL SHEETS	SHEET NO.
358	2020-006-BR	COOK	26	18
CONTRACT NO. 62K72			ILLINOIS FED. AID PROJECT	



FOR INFORMATION ONLY

MODEL: Default
 FILE: \\blm1c1-pub\blm1c1\p001\DOT\Documents\DOT_Offices\blm1c1\1\Projects\138420\CADD\Drawings\138420-000-001.dwg

	USER NAME = midyja	DESIGNED -	REVISED -	STATE OF ILLINOIS DEPARTMENT OF TRANSPORTATION	PROPOSED SUBSTRUCTURE REPAIRS (SN 016-0935) TORRENCE AVE OVER IHB AND B&OCT RAILROAD	F.A.P. RTE.	SECTION	COUNTY	TOTAL SHEETS	SHEET NO.	
	PLOT SCALE = 49.9976 ' / in.	CHECKED -	REVISED -			358	2020-006-BR	COOK	26	19	
	PLOT DATE = 5/8/2020	DATE -	REVISED -			CONTRACT NO. 62K72					
						ILLINOIS FED. AID PROJECT					
					SCALE:	SHEET 8 OF 10 SHEETS		STA. TO STA.			



Notes: All cast iron parts shall be gray iron conforming to the requirements of AASHTO M 105, Class 35B.
 Anchor studs shall conform to the requirements of ASTM A 307 and shall be galvanized according to AASHTO M 232.
 The grate, frame and downspout shall be galvanized according to AASHTO M 111 and ASTM A 385. Downspouts located on the exterior side of a painted steel fascia beam shall be painted with the finish coat specified for the exterior side of the fascia beam.
 Bolts and washers shall be stainless steel according to Article 1006.29(d) of the Standard Specifications.
 Structural steel weldments of equal sections and of the same configuration may be substituted for cast iron. Fillet or full penetration welds shall be used for the weldments. Details shall be submitted to the Engineer for approval.
 The Contractor shall take appropriate measures to assure that Protective Coat is not applied to the scupper.
 Cost of the Grate, Frame, Downspout, Anchor Studs, Bolts, Washers and Nuts including complete installation of the scupper shall be paid for at the contract unit price each for Drainage Scupper, DS-11.

**FOR
 INFORMATION
 ONLY**

MODEL: Default
 FILE: 11411612 - 1000000000.dwg
 PROJECT: 138420-CADDData\Design\138420-ecp-ar.dgn

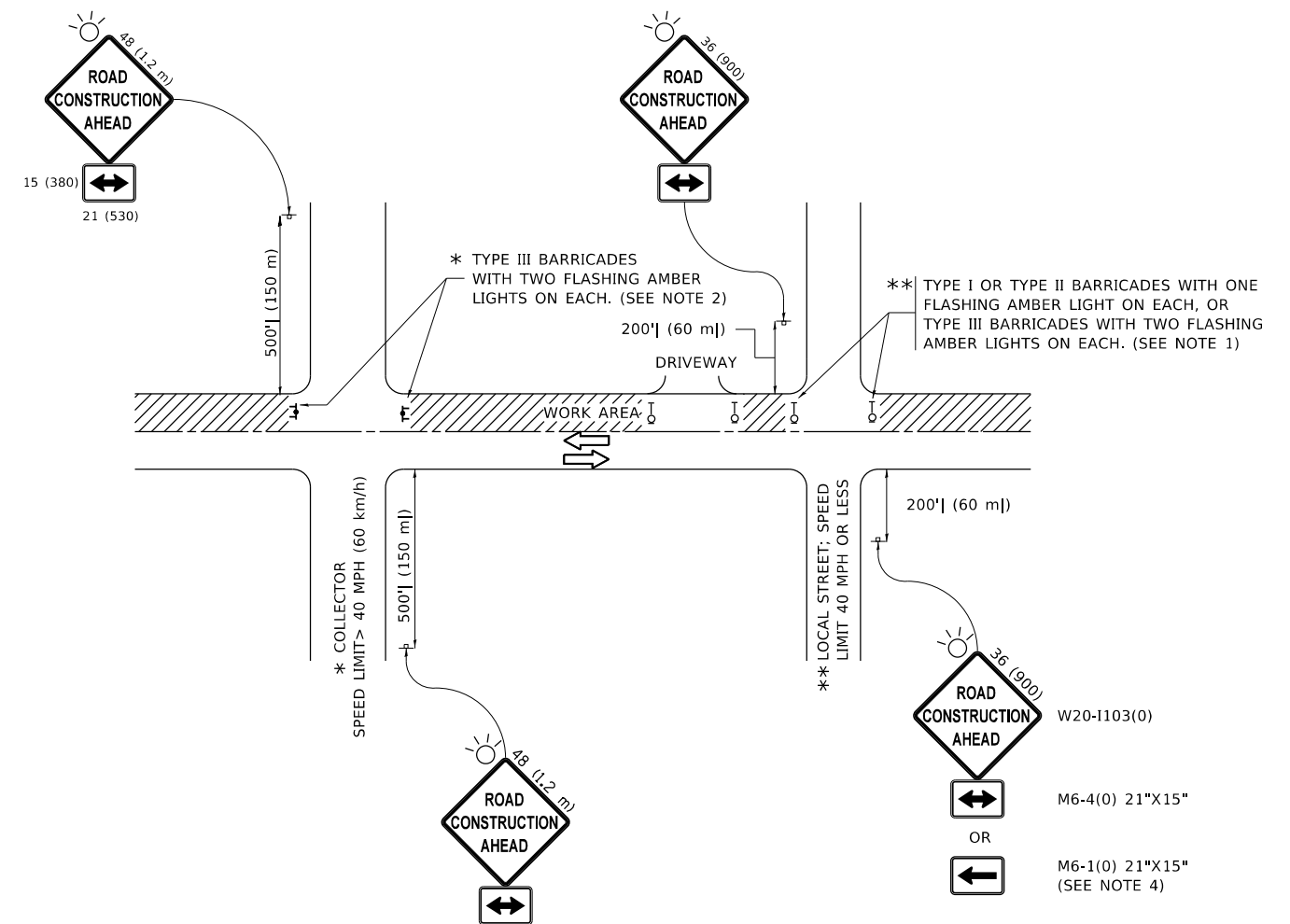
USER NAME = midytja	DESIGNED -	REVISED -
PLOT SCALE = 49.9991 ' / in.	DRAWN -	REVISED -
PLOT DATE = 5/8/2020	CHECKED -	REVISED -
	DATE -	REVISED -

STATE OF ILLINOIS
 DEPARTMENT OF TRANSPORTATION

PROPOSED SUBSTRUCTURE REPAIRS (SN 016-0935)
 TORRENCE AVE OVER IHB AND B&OCT RAILROAD

SCALE: SHEET 10 OF 10 SHEETS STA. TO STA.

F.A.P. RTE.	SECTION	COUNTY	TOTAL SHEETS	SHEET NO.
358	2020-006-BR	COOK	26	21
CONTRACT NO. 62K72				
ILLINOIS FED. AID PROJECT				



NOTES:

1. SIDE ROAD WITH A SPEED LIMIT OF 40 MPH (60 km/h) OR LESS AS SHOWN ON THE DRAWING AND AS DIRECTED BY THE ENGINEER:
 - a) ONE "ROAD CONSTRUCTION AHEAD" SIGN 36 x 36 (900x900) WITH A FLASHER MOUNTED ON IT APPROXIMATELY 200' (60 m) IN ADVANCE OF THE MAIN ROUTE.
 - b) THE CLOSED PORTION OF THE MAIN ROUTE SHALL BE PROTECTED BY BLOCKING WITH TYPE I, TYPE II OR TYPE III BARRICADES, 1/3 OF THE CROSS SECTION OF THE CLOSED PORTION.
2. SIDE ROAD WITH A SPEED LIMIT GREATER THAN 40 MPH (60 km/h) AS SHOWN ON THE DRAWING AND AS DIRECTED BY THE ENGINEER:
 - a) ONE "ROAD CONSTRUCTION AHEAD" SIGN 48 x 48 (1.2 m x 1.2 m) WITH A FLASHER MOUNTED ON IT APPROXIMATELY 500' (150 m) IN ADVANCE OF THE MAIN ROUTE.
 - b) BLOCKING WITH TYPE III BARRICADES, 1/2 OF THE CROSS SECTION OF THE CLOSED PORTION.
3. CONES MAY BE SUBSTITUTED FOR BARRICADES OR DRUMS AT HALF THE SPACING DURING DAY OPERATIONS. CONES SHALL BE A MINIMUM OF 28 (710) IN HEIGHT.
4. SIGNING AND THE WORK ZONE, A SINGLE HEADED ARROW (M6-1) SHALL BE USED IN LIEU OF THE DOUBLE HEADED ARROW (M6-4).
5. WHEN WORK IS BEING PERFORMED ON A SIDE ROAD OR DRIVEWAY, FOLLOW THE APPLICABLE STANDARD(S). THE DIRECTIONAL ARROW (M6-1 OR M6-4) SHALL BE COVERED OR REMOVED WHEN NO LONGER CONSISTENT WITH THE TRAFFIC CONTROL SET-UP.
6. ADVANCE WARNING SIGNS ARE TO BE OMITTED ON DRIVEWAYS UNLESS OTHERWISE SPECIFIED IN THE PLANS OR BY THE ENGINEER.
7. THE TRAFFIC CONTROL AND PROTECTION FOR SIDE ROADS, INTERSECTIONS, AND DRIVEWAYS SHALL BE INCLUDED IN THE COST OF SPECIFIED TRAFFIC CONTROL STANDARDS OR ITEMS.

All dimensions are in inches (millimeters) unless otherwise shown.

MODEL: Default
 FILE: \\hpc1\pub\hpc\room\dat\illinois.gov\PWIDOT\Documents\DOT_Offices\Dir\trc_1\Project\ID138420\CADD\Drawings\Design\Dir\trc.dgn

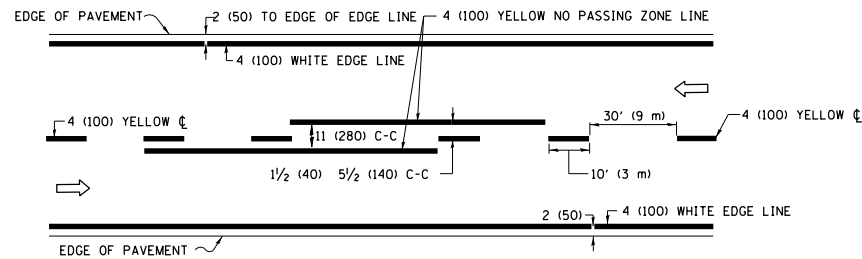
USER NAME = rothjp	DESIGNED - L.H.A.	REVISED - A. HOUSEH 10-15-96
PLOT SCALE = 100.0000' / in.	CHECKED -	REVISED - T. RAMMACHER 01-06-00
PLOT DATE = 3/24/2020	DATE - 06-89	REVISED - A. SCHUETZE 07-01-13
		REVISED - A. SCHUETZE 09-15-16

**STATE OF ILLINOIS
DEPARTMENT OF TRANSPORTATION**

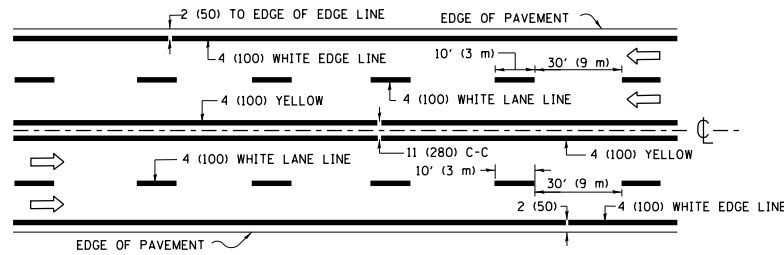
**TRAFFIC CONTROL AND PROTECTION FOR
SIDE ROADS, INTERSECTIONS, AND DRIVEWAYS**

SCALE: NONE SHEET 1 OF 1 SHEETS STA. TO STA.

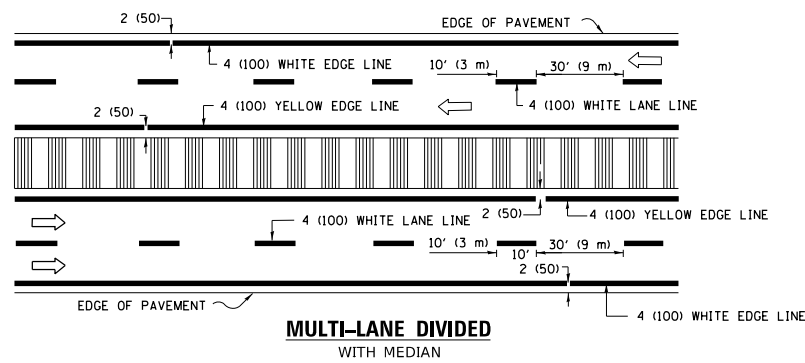
F.A.P. RTE.	SECTION	COUNTY	TOTAL SHEETS	SHEET NO.
358	2020-006-BR	COOK	26	22
TC-10			CONTRACT NO.	62K72
ILLINOIS FED. AID PROJECT				



2-LANE ROADWAY

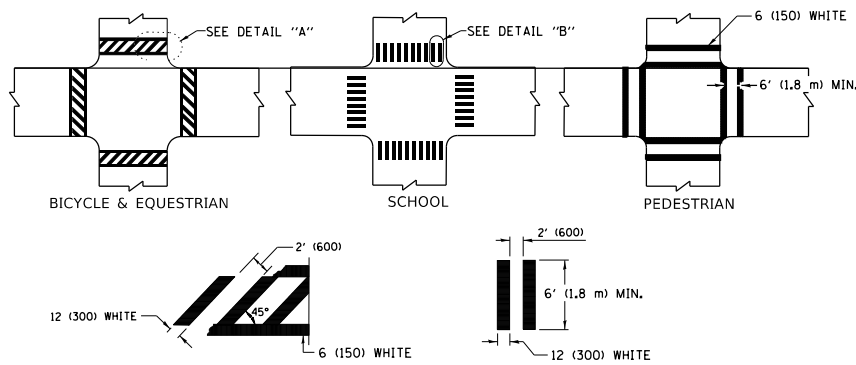


MULTI-LANE UNDIVIDED



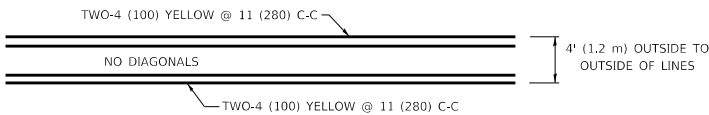
MULTI-LANE DIVIDED WITH MEDIAN

TYPICAL LANE AND EDGE LINE MARKING

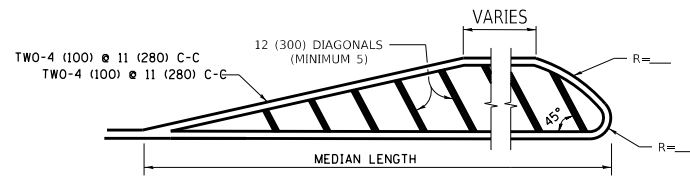


TYPICAL CROSSWALK MARKING

* MARKINGS SHALL BE INSTALLED PARALLEL TO THE CENTERLINE OF THE ROAD WHICH IT CROSSES

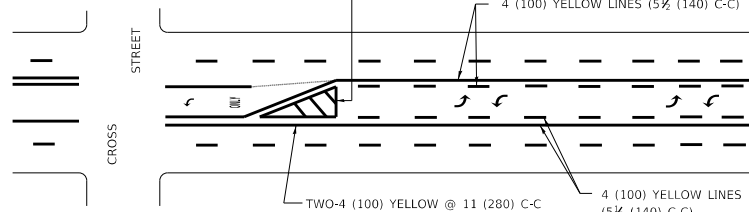


4' (1.2 m) WIDE MEDIANS ONLY



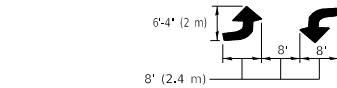
MEDIANS OVER 4' (1.2 m) WIDE

DIAGONAL LINE SPACING: 50' (15 m) C-C (LESS THAN 30MPH (50 km/h))
75' (25 m) C-C 30MPH (50 km/h) TO 45MPH (70 km/h)
150' (45 m) C-C (MORE THAN 45MPH (70 km/h))



MEDIAN WITH TWO-WAY LEFT TURN LANE TYPICAL PAINTED MEDIAN MARKING

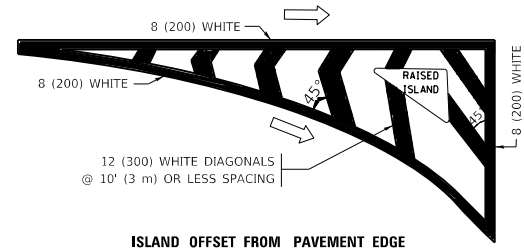
A MINIMUM OF TWO PAIRS OF TURN ARROWS SHALL BE USED, WHITE IN COLOR. ADDITIONAL PAIRS SHALL BE PLACED AT 200' (60 m) TO 300' (90 m) INTERVALS.



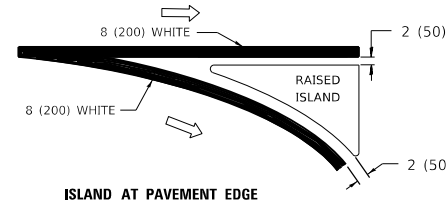
TYPICAL LEFT (OR RIGHT) TURN LANE

TYPICAL TURN LANE MARKING

FULL SIZE LETTERS 8' (2.4 m) AND ARROWS SHALL BE USED.
AREA = 15.6 SQ. FT. (1.5 m²) ONLY AREA = 20.8 SQ. FT. (1.9 m²)
* TURN LANES IN EXCESS OF 400' (120 m) IN LENGTH MAY HAVE AN ADDITIONAL SET OF ARROW - "ONLY" INSTALLED MIDWAY BETWEEN THE OTHER TWO SETS OF ARROW - "ONLY".

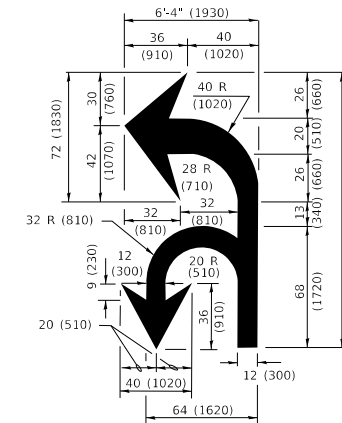


ISLAND OFFSET FROM PAVEMENT EDGE

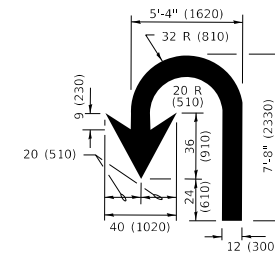


ISLAND AT PAVEMENT EDGE

TYPICAL ISLAND MARKING



COMBINATION LEFT AND U-TURN



U-TURN

LANE REDUCTION TRANSITION
* LANE REDUCTION ARROWS REQUIRED AT SPEEDS OF 45 MPH OR GREATER OR WHEN SPECIFIED IN PLANS.

D(FT)	SPEED LIMIT
345	30
425	35
500	40
580	45
665	50
750	55

TYPE OF MARKING	WIDTH OF LINE	PATTERN	COLOR	SPACING / REMARKS
CENTERLINE ON 2 LANE PAVEMENT	4 (100)	SKIP-DASH	YELLOW	10' (3 m) LINE WITH 30' (9 m) SPACE
CENTERLINE ON MULTI-LANE UNDIVIDED PAVEMENT	2 @ 4 (100)	SOLID	YELLOW	11 (280) C-C
NO PASSING ZONE LINES: FOR ONE DIRECTION FOR BOTH DIRECTIONS	4 (100) 2 @ 4 (100)	SOLID SOLID	YELLOW YELLOW	5 1/2 (140) C-C FROM SKIP-DASH CENTERLINE 11 (280) C-C OMIT SKIP-DASH CENTERLINE BETWEEN
LANE LINES	4 (100) 5 (125) ON FREEWAYS	SKIP-DASH SKIP-DASH	WHITE WHITE	10' (3 m) LINE WITH 30' (9 m) SPACE
DOTTED LINES (EXTENSIONS OF CENTER, LANE OR TURN LANE MARKINGS)	SAME AS LINE BEING EXTENDED	SKIP-DASH	SAME AS LINE BEING EXTENDED	2' (600) LINE WITH 6' (1.8 m) SPACE
EDGE LINES	4 (100)	SOLID	YELLOW-LEFT WHITE-RIGHT	OUTLINE MEDIANS IN YELLOW
TURN LANE MARKINGS	6 (150) LINE; FULL SIZE LETTERS & SYMBOLS (8' (2.4m))	SOLID	WHITE	SEE TYPICAL TURN LANE MARKING DETAIL
TWO WAY LEFT TURN MARKING	2 @ 4 (100) EACH DIRECTION 8' (2.4m) LEFT ARROW	SKIP-DASH AND SOLID IN PAIRS	YELLOW WHITE	10' (3 m) LINE WITH 30' (9 m) SPACE FOR SKIP-DASH; 5 1/2 (140) C-C BETWEEN SOLID LINE AND SKIP-DASH LINE SEE TYPICAL TWO-WAY LEFT TURN MARKING DETAIL
CROSSWALK LINES (PEDESTRIAN) A. DIAGONALS (BIKE & EQUESTRIAN) B. LONGITUDINAL BARS (SCHOOL)	2 @ 6 (150) 12 (300) @ 45° 12 (300) @ 90°	SOLID SOLID SOLID	WHITE WHITE WHITE	NOT LESS THAN 6' (1.8 m) APART 2' (600) APART 2' (600) APART SEE TYPICAL CROSSWALK MARKING DETAILS.
STOP LINES	24 (600)	SOLID	WHITE	PLACE 4' (1.2 m) IN ADVANCE OF AND PARALLEL TO CROSSWALK, IF PRESENT. OTHERWISE, PLACE AT DESIRED STOPPING POINT, PARALLEL TO CROSSROAD CENTERLINE, WHERE POSSIBLE
PAINTED MEDIANS	2 @ 4 (100) WITH 12 (300) DIAGONALS @ 45° NO DIAGONALS USED FOR 4' (1.2 m) WIDE MEDIANS	SOLID	YELLOW: TWO WAY TRAFFIC WHITE: ONE WAY TRAFFIC	11 (280) C-C FOR THE DOUBLE LINE SEE TYPICAL PAINTED MEDIAN MARKING.
GORE MARKING AND CHANNELIZING LINES	8 (200) WITH 12 (300) DIAGONALS @ 45°	SOLID	WHITE	DIAGONALS: 15' (4.5 m) C-C (LESS THAN 30MPH (50 km/h)) 20' (6 m) C-C 30MPH (50 km/h) TO 45MPH (70 km/h) 30' (9 m) C-C (OVER 45MPH (70 km/h))
RAILROAD CROSSING	24 (600) TRANSVERSE LINES *RR* IS 6' (1.8 m) LETTERS: 16 (400) LINE FOR *X*	SOLID	WHITE	SEE STATE STANDARD 780001 AREA OF: *R*=3.6 SQ. FT. (0.33 m ²) EACH *X*=54.0 SQ. FT. (5.0 m ²)
SHOULDER DIAGONALS (REQUIRED FOR SHOULDERS ≥ 8')	12 (300) @ 45°	SOLID	WHITE - RIGHT YELLOW - LEFT	50' (15 m) C-C (LESS THAN 30MPH (50 km/h)) 75' (25 m) C-C (30 MPH (50 km/h) TO 45MPH (70 km/h)) 150' (45 m) C-C (OVER 45MPH (70 km/h))
U TURN ARROW	SEE DETAIL	SOLID	WHITE	16.3 SF
2 ARROW COMBINATION LEFT AND U TURN	SEE DETAIL	SOLID	WHITE	30.4 SF

FOR FURTHER DETAILS ON PAVEMENT MARKING REFER TO STANDARD SPECIFICATIONS FOR ROAD AND BRIDGE CONSTRUCTION AND STATE STANDARD 780001.

All dimensions are in inches (millimeters) unless otherwise shown.

MODEL: Default
FILE: \\hpc\p\pub\hpcroom\ada\illinois.gov\PROJECTS\DOT\Documents\DOT - Offices\Dist\ctc_1\Project\SD\138420\CADD\Drawings\Design\Dist\545.dgn

USER NAME = rothjp	DESIGNED - EVERS	REVISED - C. JUCIUS 09-09-09
	DRAWN -	REVISED - C. JUCIUS 07-01-13
PLOT SCALE = 100.0000' / in.	CHECKED -	REVISED - C. JUCIUS 12-21-15
PLOT DATE = 3/24/2020	DATE - 03-19-90	REVISED - C. JUCIUS 04-12-16

**STATE OF ILLINOIS
DEPARTMENT OF TRANSPORTATION**

**DISTRICT ONE
TYPICAL PAVEMENT MARKINGS**

SCALE: NONE SHEET 1 OF 2 SHEETS STA. TO STA.

F.A.P. RTE.	SECTION	COUNTY	TOTAL SHEETS	SHEET NO.
358	2020-006-BR	COOK	26	23
TC-13		CONTRACT NO.	62K72	
		ILLINOIS	FED. AID PROJECT	

TURN BAY ENTRANCE AT START OF LANE CLOSURE TAPER

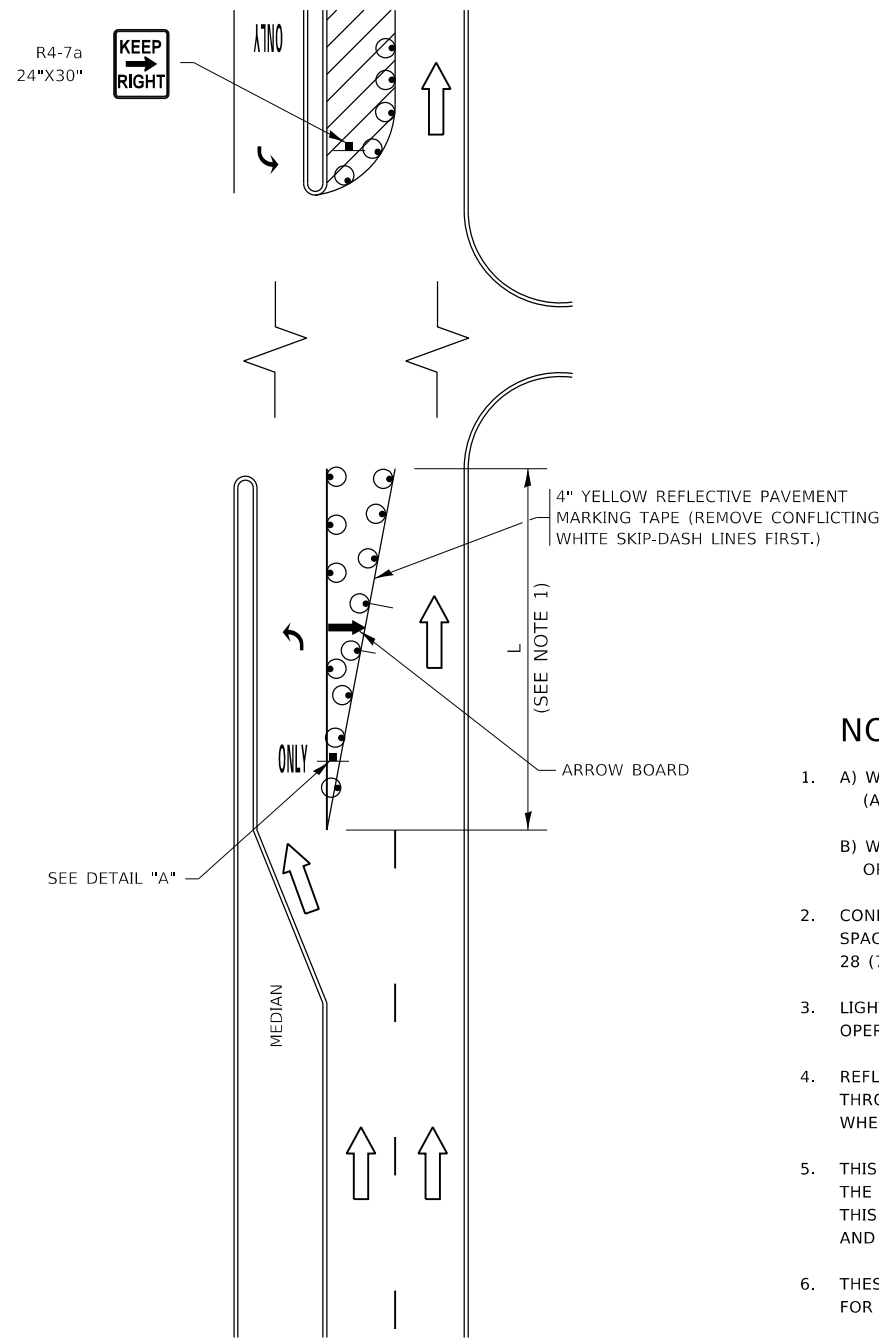


FIGURE 1

TURN BAY ENTRANCE WITHIN A LANE CLOSURE

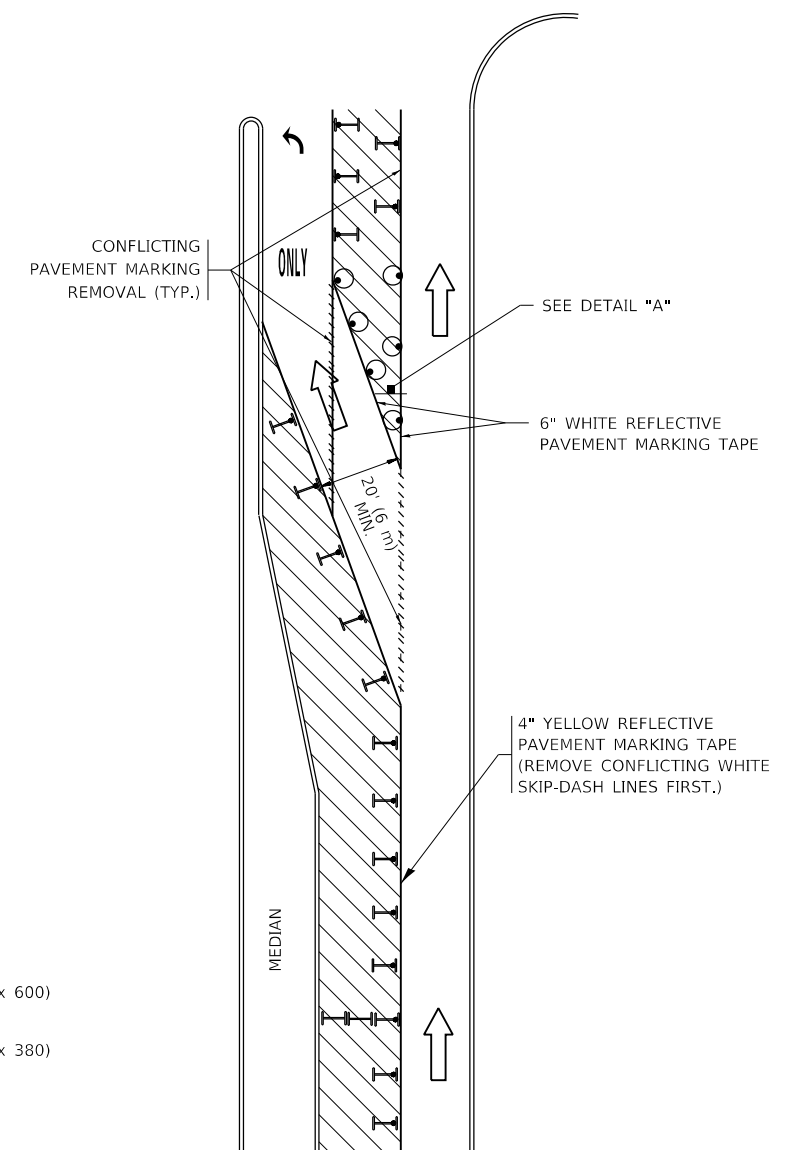
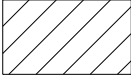
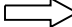







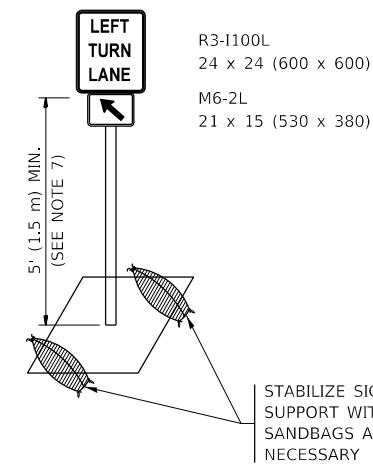
FIGURE 2

LEGEND

-  WORK AREA
-  LANE OPEN TO TRAFFIC
-  ARROW BOARD
-  TYPE I OR II BARRICADE OR DRUM WITH STEADY BURN LIGHT
-  DRUM WITH STEADY BURN LIGHT
-  SIGN ASSEMBLY
-  TYPE I OR II CHECK BARRICADE WITH FLASHING LIGHT

NOTES:

1. A) WHEN "L" IS ≤ THE STORAGE LENGTH OF THE TURN LANE (AS SHOWN IN FIG. 1), USE FIGURE 1.
B) WHEN "L" IS > THE STORAGE LENGTH OF THE TURN LANE OR THE TURN LANE IS WITHIN THE LANE CLOSURE, USE FIGURE 2.
2. CONES MAY BE SUBSTITUTED FOR BARRICADES OR DRUMS AT HALF THE SPACING DURING DAY OPERATIONS. CONES SHALL BE A MINIMUM OF 28 (710) IN HEIGHT.
3. LIGHTS WILL NOT BE REQUIRED ON BARRICADES OR DRUMS FOR DAY OPERATIONS. ALL LIGHTS SHALL BE MONODIRECTIONAL.
4. REFLECTIVE TEMPORARY PAVEMENT MARKINGS SHALL BE PLACED THROUGHOUT THE BARRICADED AREAS OF EACH TURN BAY AS SHOWN WHERE THE CLOSURE TIME IS GREATER THAN FOURTEEN (14) DAYS.
5. THIS APPLICATION ALSO APPLIES WHEN WORK IS BEING PERFORMED IN THE RIGHT LANE(S) AND THE RIGHT TURN BAY IS TO REMAIN OPEN. UNDER THIS CONDITION, "RIGHT TURN LANE" R3-1100R 24 x 24 (600 x 600) AND M6-2R 21 x 15 (530 x 380) SHALL BE USED.
6. THESE CONTROLS SHALL SUPPLEMENT MAINLINE TRAFFIC CONTROL FOR LANE CLOSURES.
7. THE SIGNS SHALL BE MOUNTED ABOVE THE BARRICADES/DRUMS ON SEPARATE SIGN SUPPORTS THAT MEET NCHRP 350 OR MASH REQUIREMENTS.
8. TRAFFIC CONTROL AND PROTECTION AT TURN BAYS (TO REMAIN OPEN TO TRAFFIC) SHALL BE INCLUDED IN THE COST OF SPECIFIED TRAFFIC CONTROL STANDARDS OR ITEMS.



DETAIL A

All dimensions are in inches (millimeters) unless otherwise shown.

MODEL: Default
FILE: \\nas01c.psw.ibm.com\data\illinois.gov\PIWDOT\Documents\DOT_Offices\District_1\Projects\2013\2013-06-06\Design\Design\TC-14.dgn

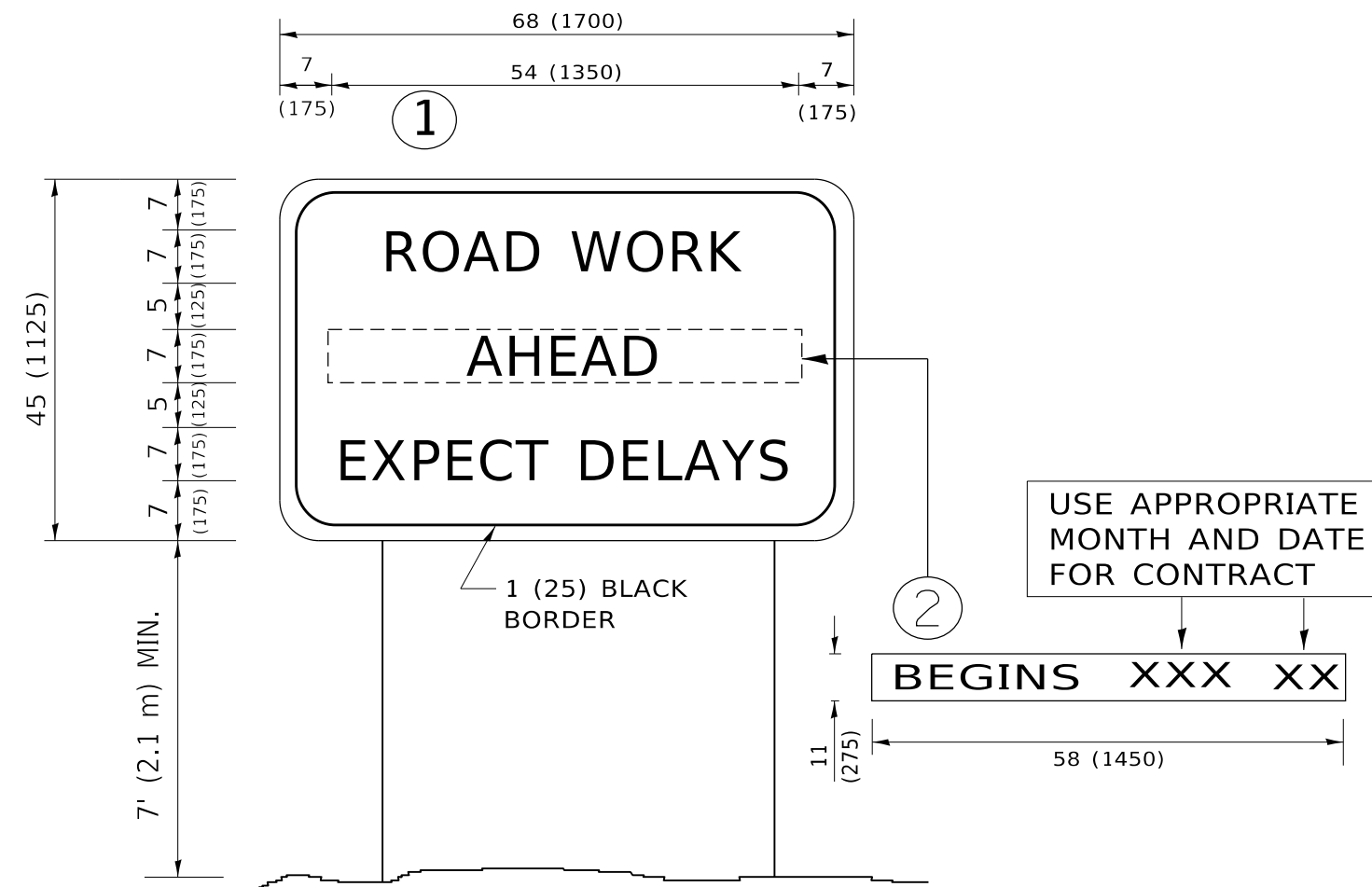
USER NAME = rothjp	DESIGNED - T. RAMMACHER 09-08-94	REVISED - R. BORO 09-14-09
	DRAWN - A. HOUSEH 11-07-95	REVISED - A. SCHUETZE 07-01-13
PLOT SCALE = 100,0000' / in.	CHECKED - A. HOUSEH 10-12-96	REVISED - A. SCHUETZE 09-15-16
PLOT DATE = 3/24/2020	DATE - T. RAMMACHER 01-06-00	REVISED -

**STATE OF ILLINOIS
DEPARTMENT OF TRANSPORTATION**

**TRAFFIC CONTROL AND PROTECTION AT TURN BAYS
(TO REMAIN OPEN TO TRAFFIC)**

SCALE: NONE SHEET 1 OF 1 SHEETS STA. TO STA.

F.A.P. RTE.	SECTION	COUNTY	TOTAL SHEETS	SHEET NO.
358	2020-006-BR	COOK	26	24
TC-14		CONTRACT NO.	62K72	
ILLINOIS FED. AID PROJECT				



NOTES:

1. USE BLACK LETTERING ON ORANGE BACKGROUND.
2. ERECT SIGNS IN ADVANCE OF THE LOCATION FOR THE "ROAD CONSTRUCTION AHEAD" SIGN AT LOCATIONS AS DIRECTED BY THE ENGINEER.
3. ERECT SIGN ① WITH INSTALLED PANEL ② ONE WEEK PRIOR TO THE START OF CONSTRUCTION.
4. REMOVE PANEL ② SOON AFTER THE START OF CONSTRUCTION.
5. SEE SPECIAL PROVISION FOR "TEMPORARY INFORMATION SIGNING" FOR ADDITIONAL INFORMATION.
6. ONE SIGN ASSEMBLY EQUALS 25.70 SQ. FT. (2.3 SQ. M.)
7. SHALL BE PAID FOR AS TEMPORARY INFORMATION SIGNING.

ALL DIMENSIONS ARE IN INCHES (MILLIMETERS) UNLESS OTHERWISE SHOWN.

MODEL: Default
 FILE: \\nas01c.pw.state.il.us\pub\haronm.d\at\illinois.gov\PW\DOT\Documents\DOT_Offices\Dir\etct_1\Project\ID 138420\CADD\ata\Design\DES.dgn

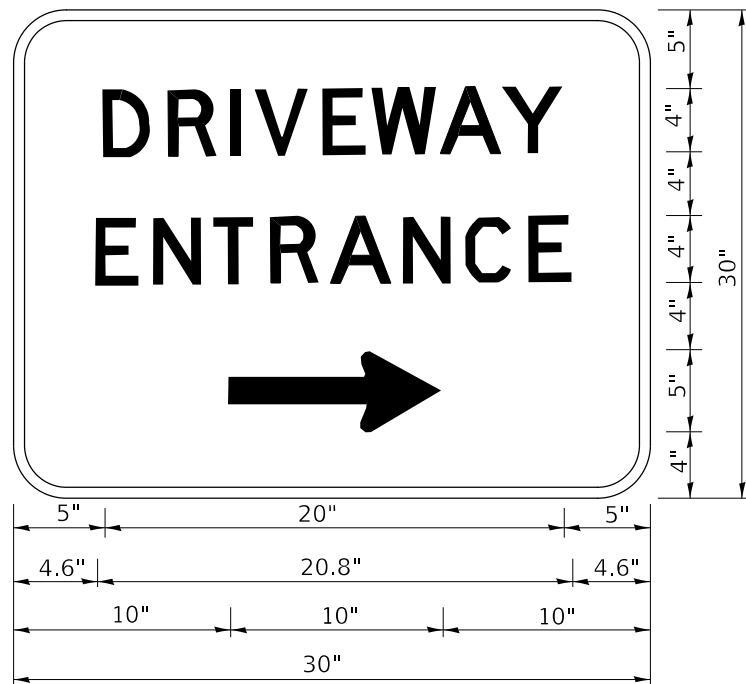
USER NAME = rothjp	DESIGNED -	REVISED - R. MIRS 09-15-97
	DRAWN -	REVISED - R. MIRS 12-11-97
PLOT SCALE = 100.0000 ' / in.	CHECKED -	REVISED - T. RAMMACHER 02-02-99
PLOT DATE = 3/24/2020	DATE -	REVISED - C. JUCIUS 01-31-07

**STATE OF ILLINOIS
DEPARTMENT OF TRANSPORTATION**

**ARTERIAL ROAD
INFORMATION SIGN**

SCALE: NONE SHEET 1 OF 1 SHEETS STA. TO STA.

F.A.P. RTE.	SECTION	COUNTY	TOTAL SHEETS	SHEET NO.
358	2020-006-BR	COOK	26	25
TC-22		CONTRACT NO.	62K72	
ILLINOIS FED. AID PROJECT				



3.0" RADIUS, 0.5" BORDER, WHITE ON GREEN; REFLECTORIZED "DRIVEWAY" D; "ENTRANCE" D; STANDARD ARROW CUSTOM 12.0" x 5.0"

NOTES:

1. HALF OF THE SIGNS WILL REQUIRE A LEFT HAND FACING ARROW.
2. TWO SIGNS SHALL BE USED AT EACH COMMERCIAL ENTRANCE PLACED BACK-TO-BACK: ONE WITH A RIGHT HAND ARROW (SHOWN) SHALL BE PLACED ON THE NEAR RIGHT SIDE THE DRIVEWAY AND ONE WITH A LEFT HAND ARROW SHALL BE PLACED ON THE FAR LEFT SIDE OF THE DRIVEWAY.
3. SIGNS TO BE PAID FOR AS ITEM "TEMPORARY INFORMATION SIGNING".

MODEL: Default
 FILE: \\nas01pc-pw101001\pww\dot\Documents\DOT_Offices\Driftdtct_1\Projects\138420\CAD\Drawings\Design\DRIVEWAY.dgn

USER NAME = rothjp	DESIGNED -	REVISED - C. JUCIUS 02-15-07
	DRAWN -	REVISED -
PLOT SCALE = 100.0000' / in.	CHECKED -	REVISED -
PLOT DATE = 3/24/2020	DATE -	REVISED -

**STATE OF ILLINOIS
 DEPARTMENT OF TRANSPORTATION**

DRIVEWAY ENTRANCE SIGNING

SCALE: NONE SHEET 1 OF 2 SHEETS STA. TO STA.

F.A.P. RTE.	SECTION	COUNTY	TOTAL SHEETS	SHEET NO.
358	2020-006-BR	COOK	26	26
TC-26			CONTRACT NO. 62K72	
ILLINOIS FED. AID PROJECT				