

STATE OF ILLINOIS  
DEPARTMENT OF TRANSPORTATION

F.A.P. RTE.	SECTION	COUNTY	TOTAL SHEETS	SHEET NO.
29	(29R-SF) BP 25	COOK	17	1
		ILLINOIS	CONTRACT NO. 80B51	

D-91-040-26

FOR INDEX OF SHEETS, SEE SHEET NO. 2

**THIS PROJECT IS LOCATED IN THE VILLAGE OF BRIDGEVIEW**

**PROPOSED  
HIGHWAY PLANS**

**FAP ROUTE 29: US 12/20 (95th ST)  
AT IHB RAILROAD  
SECTION: (29R-SF) BP 25  
BRIDGE PAINTING  
COOK COUNTY**

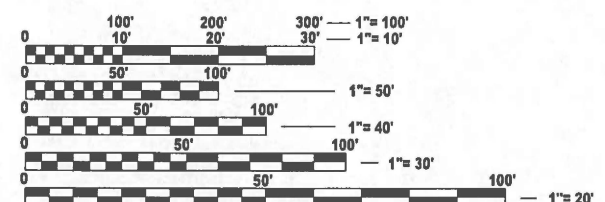
**TRAFFIC DATA:**  
**STRUCTURE NO. 016-0436**  
**95TH ST UNDER IHB RR**  
**ADT: 43,400 (2025)**  
**SPEED LIMIT: 45 MPH**

C-91-046-26

R 12 E

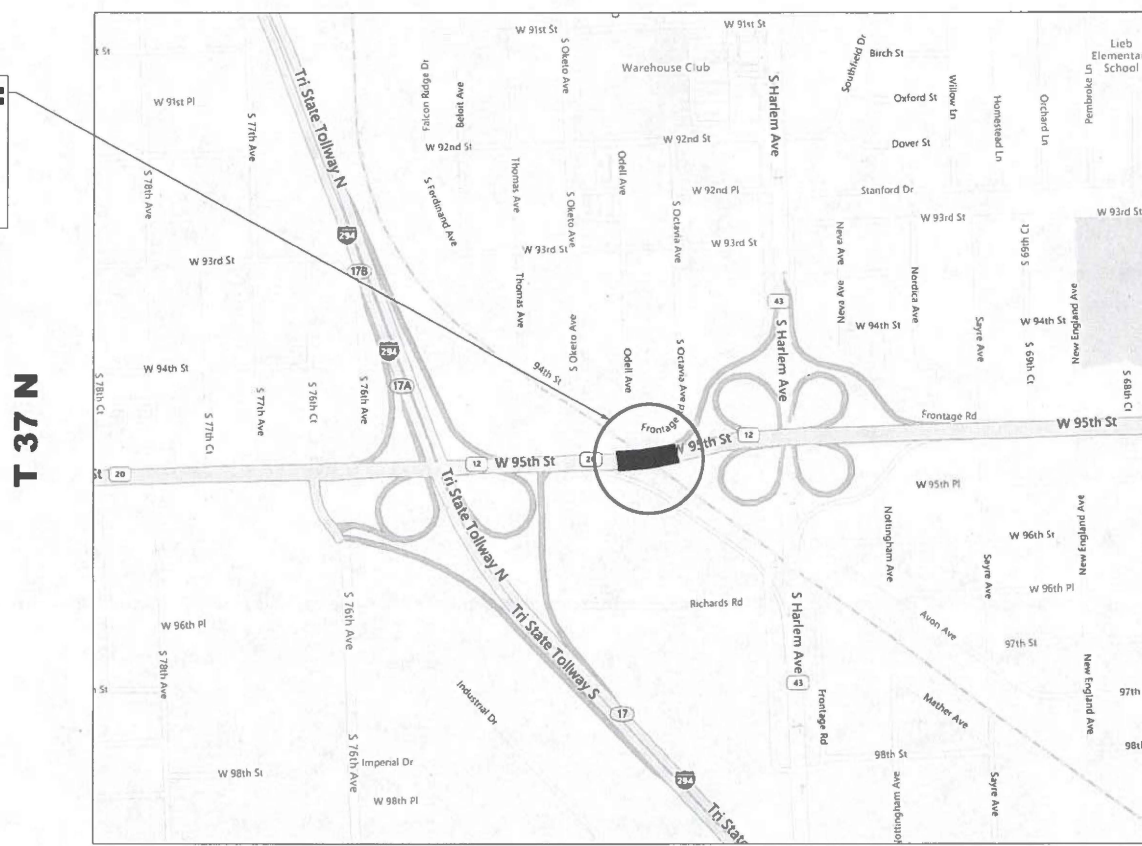


**IMPROVEMENT LOCATION:  
US 12 / 20 95TH ST  
AT IHB RR  
STRUCTURE NO.:  
016-0436**



FULL SIZE PLANS HAVE BEEN PREPARED USING STANDARD ENGINEERING SCALES. REDUCED SIZED PLANS WILL NOT CONFORM TO STANDARD SCALES. IN MAKING MEASUREMENTS ON REDUCED PLANS, THE ABOVE SCALES MAY BE USED.

**J.U.L.I.E.  
JOINT UTILITY LOCATION INFORMATION FOR EXCAVATION  
1-800-892-0123  
OR 811**



**PROJECT ENGINEER: RODRIGO LEDEZMA (847) 705-4580**  
**PROJECT MANAGER: J. ALAIN MIDY (847) 221-3056**

**PALOS TOWNSHIP**  
**GROSS & NET LENGTH = 1,050 FT. = 0.20 MILE**

**CONTRACT NO. 80B51**

STATE OF ILLINOIS  
DEPARTMENT OF TRANSPORTATION

SUBMITTED March 19 20 26  
Jose Pios IR  
REGIONAL ENGINEER

May 8 20 26  
[Signature]  
ENGINEER OF DESIGN AND ENVIRONMENT

May 8 20 26  
[Signature]  
DIRECTOR OF HIGHWAYS PROJECT IMPLEMENTATION

**PRINTED BY THE AUTHORITY  
OF THE STATE OF ILLINOIS**

## INDEX OF SHEETS

SHEET NO.	DESCRIPTION
1	COVER SHEET
2	INDEX OF SHEETS, STATE STANDARDS & GENERAL NOTES
3	SUMMARY OF QUANTITIES
4	TYPICAL SECTIONS
5	DETOUR ROUTE (SN 016-0436)
6 - 8	EXISTING BRIDGE PLANS (SN 016-0436)
9 - 11	MAINTENANCE OF TRAFFIC
12	ENTRANCE AND EXIT RAMP CLOSURE DETAILS (TC-08)
13	TRAFFIC CONTROL AND PROTECTION FOR SIDE ROADS, INTERSECTIONS, AND DRIVEWAYS (TC-10)
14	TYPICAL APPLICATIONS RAISED REFLECTIVE PAVEMENT MARKERS (SNOW-PLOW RESISTANT) (TC-11)
15	DISTRICT ONE TYPICAL PAVEMENT MARKINGS (TC-13)
16	DETOUR SIGNING FOR CLOSING STATE HIGHWAYS (TC-21)
17	ARTERIAL ROAD INFORMATION SIGN (TC-22)

## STATE STANDARDS

STANDARD NO.	DESCRIPTION
000001-09	STANDARD SYMBOLS, ABBREVIATIONS, AND PATTERNS
701601-09	URBAN LANE CLOSURE, MULTILANE, 1W OR 2W WITH NONTRAVERSABLE MEDIAN
701411-09	LANE CLOSURE, MULTILANE, AT ENTERANCE OR EXIT RAMP, FOR SPEEDS > 45 MPH
701106-02	OFF-RD OPERATIONS, MULTILANE, MORE THAN 15' (4.5 M) AWAY
701426-09	LANE CLOSURE, MULTILANE, INTERMITTENT OR MOVING OPER., FOR SPEEDS > 45 MPH
701427-05	LANE CLOSURE, MULTILANE, INTERMITTENT OR MOVING OPER., FOR SPEEDS < 40 MPH
701901-11	TRAFFIC CONTROL DEVICES

## GENERAL NOTES

- BEFORE STARTING ANY EXCAVATION, THE CONTRACTOR SHALL CALL "JULIE AT (800) 892-0123 OR 811 FOR FIELD LOCATIONS OF BURIED ELECTRIC, TELEPHONE AND GAS FACILITIES, (48 HOURS NOTIFICATION IS REQUIRED).
- THE CONTRACTOR WILL NOT BE ALLOWED TO SET UP A YARD OR FIELD OFFICE ON STATE PROPERTY WITHOUT WRITTEN PERMISSION FROM THE DEPARTMENT.
- IT SHALL BE THE CONTRACTOR'S RESPONSIBILITY TO VERIFY ALL DIMENSIONS AND CONDITIONS EXISTING IN THE FIELD PRIOR TO ALL CONSTRUCTION AND ORDERING OF MATERIALS.
- THE CONTRACTOR SHALL CONTACT THE DISTRICT ONE TRAFFIC CONTROL SUPERVISOR KALPANA KANNAN-HOSADURGA AT KALPANA.KANNAN-HOSADURGA@ILLINOIS.GOV A MINIMUM OF 72 HOURS IN ADVANCE OF BEGINNING WORK.
- THE CONTRACTOR SHALL BE RESPONSIBLE FOR THE NOTIFICATION OF ALL EMERGENCY SERVICES, SCHOOL DISTRICTS, I.D.O.T.'S COMMUNICATIONS CENTER, SPRINGFIELD TRUCK PERMIT SECTION AND OTHER AGENCIES AFFECTED BY THE CLOSURE. THE CONTRACTOR SHALL ALSO BE RESPONSIBLE FOR POSTING SIGNS THAT WILL INDICATE THE DATES THE CLOSURE WILL BE IN PLACE.
- THESE PLANS HAVE BEEN PREPARED WITH NOTES RECEIVED FROM THE BUREAU OF MAINTENANCE BRIDGE INSPECTORS
- IT SHALL BE THE CONTRACTORS RESPONSIBILITY TO PROTECT AND MAINTAIN THE EXISTING BRIDGE LIGHTING AT ANY LOCATIONS THAT LIGHTING IS ENCOUNTERED ADJACENT TO AN AREA TO BE CLEANED AND PAINTED
- THE CONTRACTOR SHALL COORDINATE CONSTRUCTION ACTIVITIES WITH UTILITY COMPANIES, VILLAGE OF BRIDGEVIEW IN COOK COUNTY.
- THE CONTRACTOR SHALL BE REQUIRED TO PROVIDE ACCESS TO ABUTTING PROPERTY AT ALL TIMES DURING THE CONSTRUCTION OF THIS PROJECT
- THE ENGINEER SHALL CONTACT PATRICE HARRIS, AREA TRAFFIC FIELD TECHNICIAN, AT PATRICE.HARRIS@ILLINOIS.GOV A MINIMUM OF TWO (2) WEEKS PRIOR TO THE PLACEMENT OF PERMANENT PAVEMENT MARKINGS.
- BEFORE BEGINNING ANY WORK, THE CONTRACTOR SHALL RETAIN AND RECORD, FOR FUTURE REFERENCE, ALL EXISTING PAVEMENT MARKING LINES (AND RAISED REFLECTIVE PAVEMENT MARKERS) IN ORDER THAT THESE LOCATIONS BE RE-ESTABLISHED FOR STRIPING. EXACT LOCATIONS OF ALL PAVEMENT MARKINGS SHALL BE AS DIRECTED BY THE ENGINEER.
- CONTRACTOR SHALL CONTACT RICH JEZIERNY AT 312-603-1734 FOR TEMPORARY TRAFFIC SIGNAL TIMING OF COOK COUNTY TRAFFIC SIGNAL
- CONTRACTOR SHALL CONTACT JASON JARVIS, OF COGENT COMMUNICATIONS, AT 219-491-5880 FOR A FIELD MEETING.

## TRAFFIC CONTROL NOTES

- CHANGABLE MESSAGE SIGNS SHALL BE INSTALLED TWO WEEKS PRIOR TO ALL ROAD CLOSURE, TRAFFIC STAGE CHANGES, AND NEW TRAFFIC SIGNAL TURN-ON EVENTS ON EACH APPROACH OF THE EFFECTED ROADWAY TO WARN MOTORISTS OF THE UPCOMING EVENT. THE SIGNS SHALL BE REMOVED TWO WEEKS THEREAFTER UNLESS THE SIGNS ARE NEEDED AGAIN FOR A SUBSEQUENT FUTURE EVENT THAT WILL OCCUR WITHIN 2 WEEKS ON THE SAME APPROACH OF EFFECTED ROADWAY. THE SIGN LOCATIONS SHALL BE (DETERMINED BY THE ENGINEER) PLACED AS DIRECTED BY THE ENGINEER.
- THE "ROAD CONSTRUCTION AHEAD" SIGNS SHALL REMAIN INSTALLED UNTIL THE COMPLETION OF THE PROJECT OR WHEN NO ROADWAY HAZARDS REMAIN WITHIN THE WORKZONE.
- TEMPORARY CONCRETE BARRIER SHALL BE INSTALLED IN ACCORDANCE WITH SECTION 704 OF THE IDOT STANDARD SPECIFICATIONS. ALL TEMPORARY CONCRETE BARRIER APPROACH AND DEPARTING END UNITS SHALL BE ANCHORED TO THE PAVEMENT USING SIX ANCHOR PINS AS SHOWN IN IDOT STANDARD 704001. PINNING OF ADDITIONAL BARRIER UNITS WITH THREE ANCHOR PINS ON THE TRAFFIC SIDE HOLES WITHIN INSTALLATION SHALL BE REQUIRED WHEN EQUIPMENT, VEHICLES, MATERIALS, FIXED OBJECTS OR A DROP-OFF IS LOCATED WITHIN 24" BEHIND THE BARRIER. THE 24" OF CLEAR PAVEMENT MEASUREMENT SHALL BE FROM THE BASE OF THE NON-TRAFFIC SIDE OF THE BARRIER. TRAFFIC SIDE PINNED BARRIER SHALL HAVE A MINIMUM OF 6" OF CLEAR PAVEMENT BEHIND THE BARRIER. WHERE BOTH PINNED AND UNPINNED BARRIER UNITS ARE USED IN A CONTINUOUS INSTALLATION, A TRANSITION SHALL BE PROVIDED BETWEEN THEM. THE TRANSITION FROM PINNED TO UNPINNED BARRIER SHALL CONSIST OF TWO ANCHOR PINS INSTALLED IN THE END HOLES ON THE TRAFFIC SIDE OF THE FIRST BARRIER BEYOND THE PINNED SECTION AND ONE ANCHOR PIN INSTALLED IN THE MIDDLE HOLE OF THE TRAFFIC SIDE OF THE SECOND BARRIER BEYOND THE PINNED SECTION. THE THIRD BARRIER BEYOND THE PINNED SECTION SHALL THEN BE UNPINNED.
- ALL EXISTING LANE LINE PAVEMENT MARKINGS AND RAISED REFLECTIVE PAVEMENT MARKER REFLECTORS LOCATED WITHIN TEMPORARY LANE CLOSURE TAPERS, LANE SHIFT TAPERS OR IN LOCATIONS THAT CONFLICT WITH THE TEMPORARY PAVEMENT MARKING TAPE USED FOR STAGING SHALL BE COVERED WITH BLACKOUT TAPE IF THE STAGING REMAINS IN PLACE FOR MORE THAN 14 DAYS. THE EXISTING PAVEMENT MARKINGS AND RAISED REFLECTIVE PAVEMENT MARKER REFLECTORS THAT WERE REMOVED SHALL BE RESTORED IN KIND AFTER THE COMPLETION OF THE STAGING.

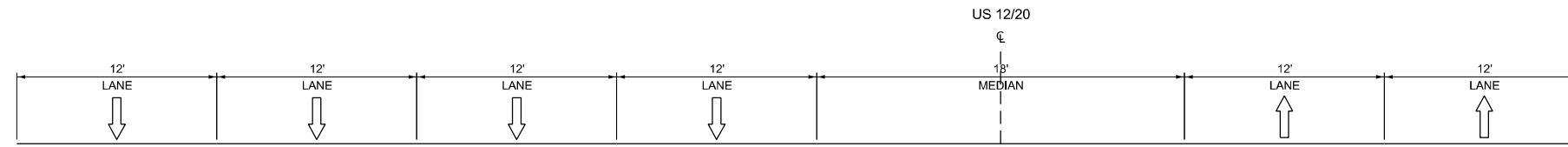
## GENERAL PAINT NOTES

- CLEANING AND PAINTING OF EXISTING STRUCTURAL STEEL SHALL BE SPECIFIED IN THE SPECIAL PROVISION FOR "CLEANING AND PAINTING EXISTING STEEL STRUCTURES".
- ALL ITEMS (SUCH AS, BUT NOT LIMITED TO: CONDUITS, BRACKETS AND DECK DRAINS) ATTACHED TO OUTSIDE OF THE FASCIA BEAMS SHALL BE CLEANED AND PAINTED.
- LOCATION 1: (SN 016-0436): ALL GIRDEERS, BEAMS, BEARINGS AND OTHER STRUCTURAL STEEL, SHALL BE CLEANED PER NEAR WHITE BLAST CLEANING SSPC-SP10
- ALL AREAS THAT ARE DESIGNATED TO BE CLEANED SHALL BE PAINTED ACCORDING TO THE REQUIREMENTS OF PAINT SYSTEM 1 -0Z/E/U. THE COLOR OF THE FINAL FINISH COAT FOR ALL INTERIOR STEEL SURFACES SHALL BE GRAY, MUNSELL NO 5B 7/1. THE COLOR OF THE FINAL FINISH COAT FOR THE EXTERIOR AND BOTTOM FLANGE OF THE FASCIA BEAMS SHALL BE REDDISH BROWN, MUNSELL NO 2. 5YR 3/4.
- A MINIMUM OF 2 AIR MONITORS AT EVERY LOCATION WILL BE REQUIRED TO MONITOR ABRASIVE BLASTING OPERATIONS. SEE SPECIAL PROVISIONS FOR "CONTAINMENT AND DISPOSAL OF LEAD PAINT CLEANING RESIDUE".
- SSPC QP1 AND SSPC QP2 CERTIFICATION IS REQUIRED FOR THIS CONTRACT

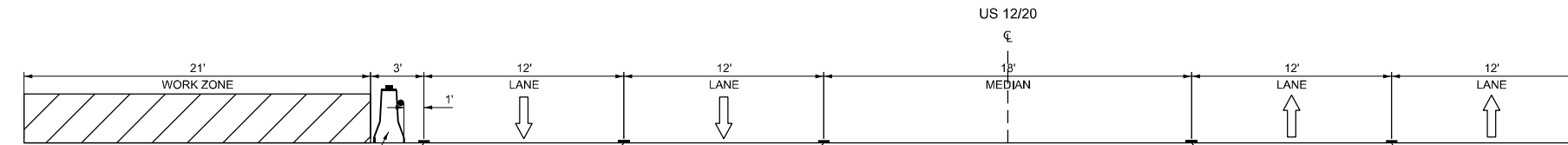
MODEL: INDEX OF SHEETS (Sheet)  
FILE NAME: c:\p\work\wv\rd\robert.torchalski@illinois.gov\1191709\104026-sht-gennotes.dgn

USER NAME = robert.torchalski	DESIGNED -	REVISED -	<b>STATE OF ILLINOIS DEPARTMENT OF TRANSPORTATION</b>	<b>INDEX OF SHEETS, STATE STANDARDS &amp; GENERAL NOTES US 12/20 (95TH ST) AT IHB RAILROAD</b>	F.A.P. RTE.	SECTION	COUNTY	TOTAL SHEETS	SHEET NO.	
	DRAWN -	REVISED -			29	(29R-SF) BP 25	COOK	17	2	
	CHECKED -	REVISED -			CONTRACT NO. 80B51					
PLOT DATE = 3/19/2026	DATE -	REVISED -			SCALE:	SHEET 1	OF 1	SHEETS	STA.	TO STA.



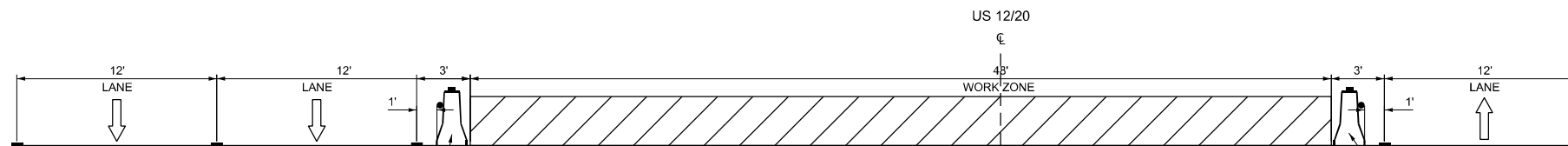


**TYPICAL SECTION**  
(LOOKING EAST)



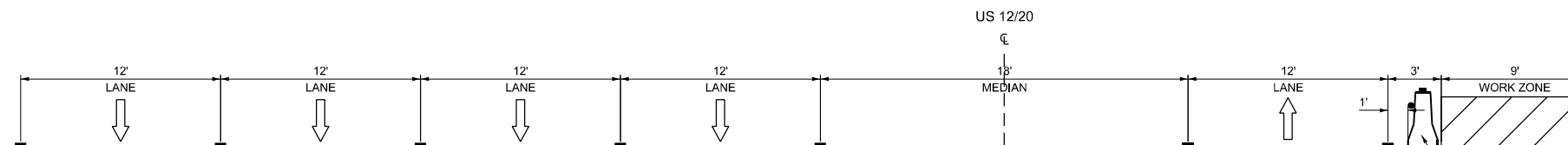
**TYPICAL SECTION - STAGE I**  
(LOOKING EAST)

TEMPORARY CONCRETE BARRIER WALL WITH MONO-DIRECTIONAL CRYSTAL TYPE C REFLECTORS PER 704001 AND 782006  
 PAVEMENT MARKING TAPE, TYPE IV, 4", WHITE  
 EXISTING PAVEMENT MARKING, WHITE  
 EXISTING PAVEMENT MARKING, YELLOW  
 EXISTING PAVEMENT MARKING, YELLOW  
 EXISTING PAVEMENT MARKING, YELLOW



**TYPICAL SECTION - STAGE II**  
(LOOKING EAST)

EXISTING PAVEMENT MARKING, YELLOW  
 EXISTING PAVEMENT MARKING, WHITE  
 PAVEMENT MARKING TAPE, TYPE IV, 4", YELLOW  
 EXISTING PAVEMENT MARKING, YELLOW  
 EXISTING PAVEMENT MARKING, YELLOW  
 PAVEMENT MARKING TAPE, TYPE IV, 4", YELLOW  
 TEMPORARY CONCRETE BARRIER WALL WITH MONO-DIRECTIONAL AMBER TYPE C REFLECTORS PER 704001 AND 782006



**TYPICAL SECTION - STAGE III**  
(LOOKING EAST)

EXISTING PAVEMENT MARKING, YELLOW  
 EXISTING PAVEMENT MARKING, WHITE  
 EXISTING PAVEMENT MARKING, WHITE  
 EXISTING PAVEMENT MARKING, WHITE  
 EXISTING PAVEMENT MARKING, YELLOW  
 EXISTING PAVEMENT MARKING, YELLOW  
 TEMPORARY CONCRETE BARRIER WALL WITH MONO-DIRECTIONAL CRYSTAL TYPE C REFLECTORS PER 704001 AND 782006  
 PAVEMENT MARKING TAPE, TYPE IV, 4", WHITE

MODEL: Typical Sections (Sheet)  
 FILE NAME: c:\p\work\1191709\1191709-104026-sh3-typical.dgn

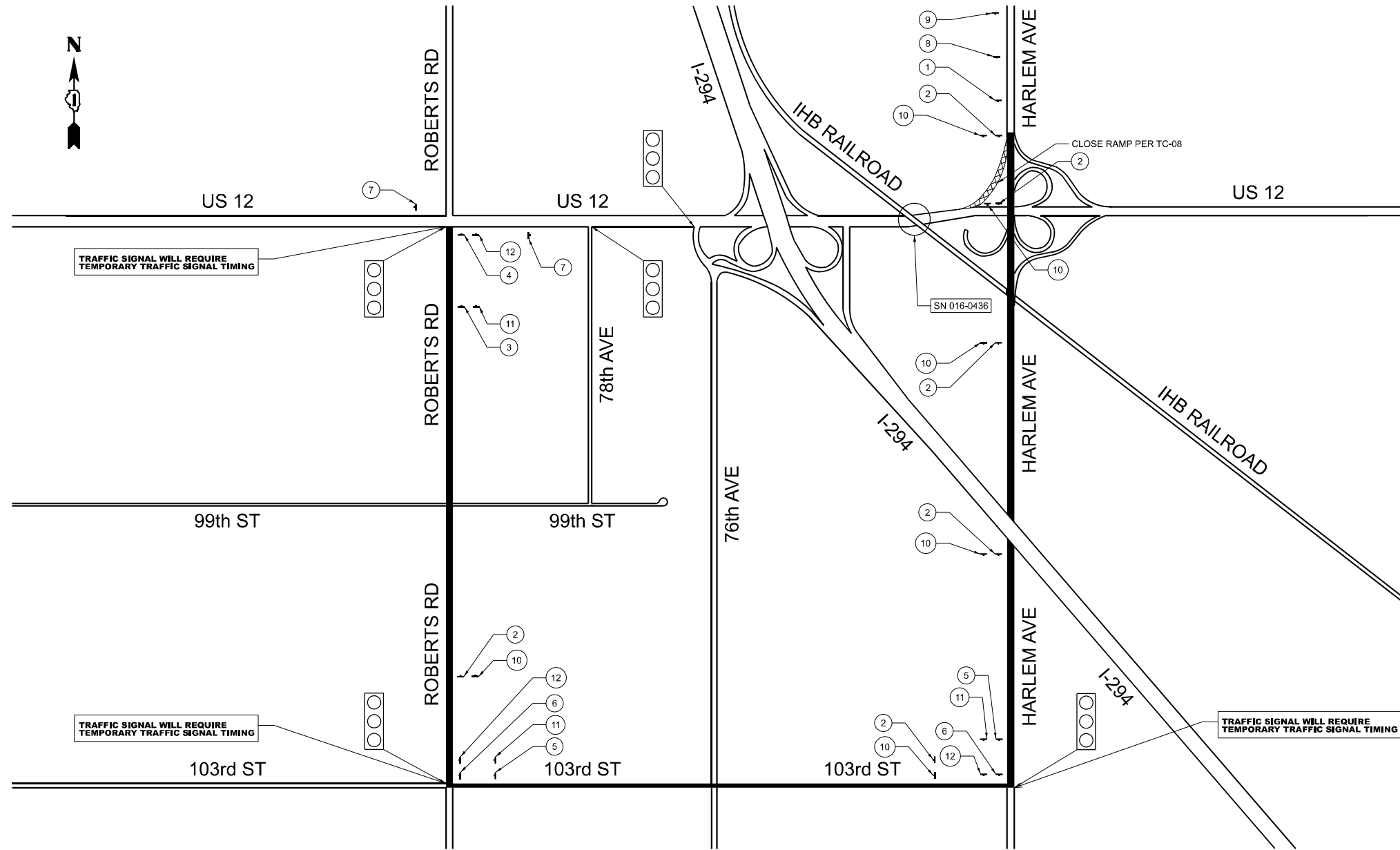
USER NAME = robert.torchalski	DESIGNED -	REVISED -
	DRAWN -	REVISED -
	CHECKED -	REVISED -
PLOT DATE = 3/2/2026	DATE -	REVISED -

**STATE OF ILLINOIS**  
**DEPARTMENT OF TRANSPORTATION**

**SUGGESTED MAINTENANCE OF TRAFFIC - TYPICAL SECTIONS**  
**US 12/20 (95TH ST) AT IHB RAILROAD**

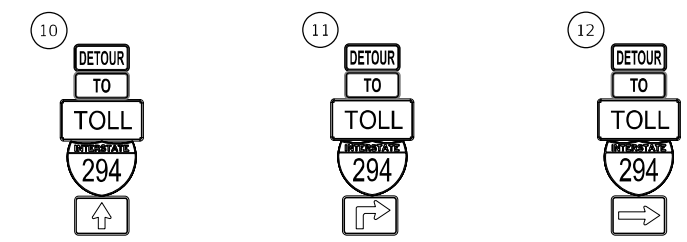
SCALE: SHEET 1 OF 1 SHEETS STA. TO STA.

F.A.P. RTE.	SECTION	COUNTY	TOTAL SHEETS	SHEET NO.
29	(29R-SF) BP 25	COOK	17	4
CONTRACT NO. 80B51				
ILLINOIS FED. AID PROJECT				

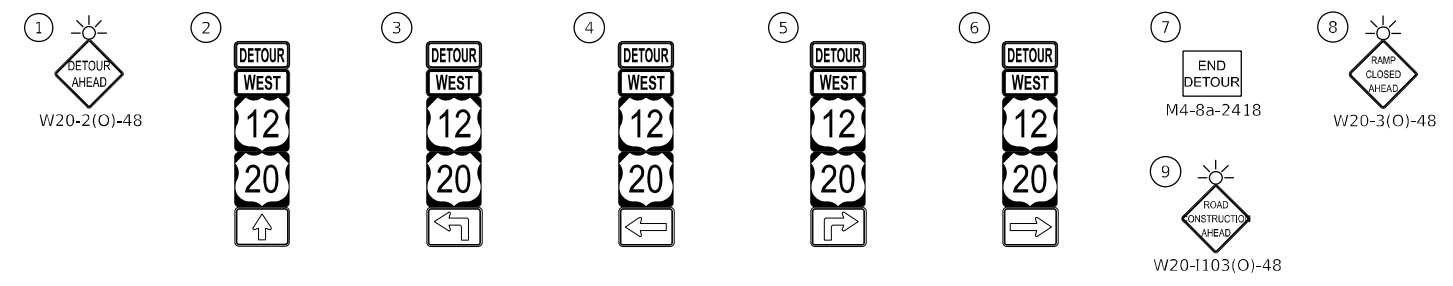


### DETOUR NOTES

- DETOUR SIGNAGE SHALL BE CONSIDERED INCLUDED IN THE COST FOR TRAFFIC CONTROL AND PROTECTION (SPECIAL) EXCEPT AS OTHERWISE NOTED.
- SEE DETAIL TC-21 AND TC-08 FOR TYPICAL SIGN SPACING.
- TEMPORARY TRAFFIC SIGNAL TIMING TO BE ENACTED ALONG THE DETOUR ROUTE AT THE FOLLOWING TRAFFIC SIGNALS:  
 - HARLEM AND 103rd ST  
 - ROBERTS RD AND 95th ST  
 - 103rd ST AND ROBERTS RD
- A MINIMUM OF FOURTEEN (14) DAYS IN ADVANCE OF THE RAMP CLOSURE, THE CONTRACTOR SHALL PLACE ONE (1) CMS ON IL 43 PRIOR TO THE RAMP AS DIRECTED AND AT A LOCATION DESIGNATED BY THE ENGINEER TO INFORM MOTORISTS OF THE UPCOMING CONSTRUCTION. THE MESSAGE SHALL BE APPROVED BY THE ENGINEER. THIS WORK IS TO BE PAID FOR AT THE CONTRACT UNIT PRICE PER CALENDAR DAY FOR CHANGEABLE MESSAGE SIGN
- THE CONTRACTOR SHALL NOT OBSTRUCT ANY EXISTING SIGNAGE WITH THE PLACEMENT OF DETOUR SIGNAGE.



ROUTE MARKERS	ARROW SIGNS	CARDINAL DIRECTION SIGNS
M1-4-2424	M6-3(O)-2115	M3-4(O)-2412
M1-4-2424	M5-1L(O)-2115	M4-8(O)-2412
M1-1-2424	M6-1(O)-2115	M4-5(O)-2412
	M5-1R(O)-2115	M4-15-2412
	M6-1(O)-2115	



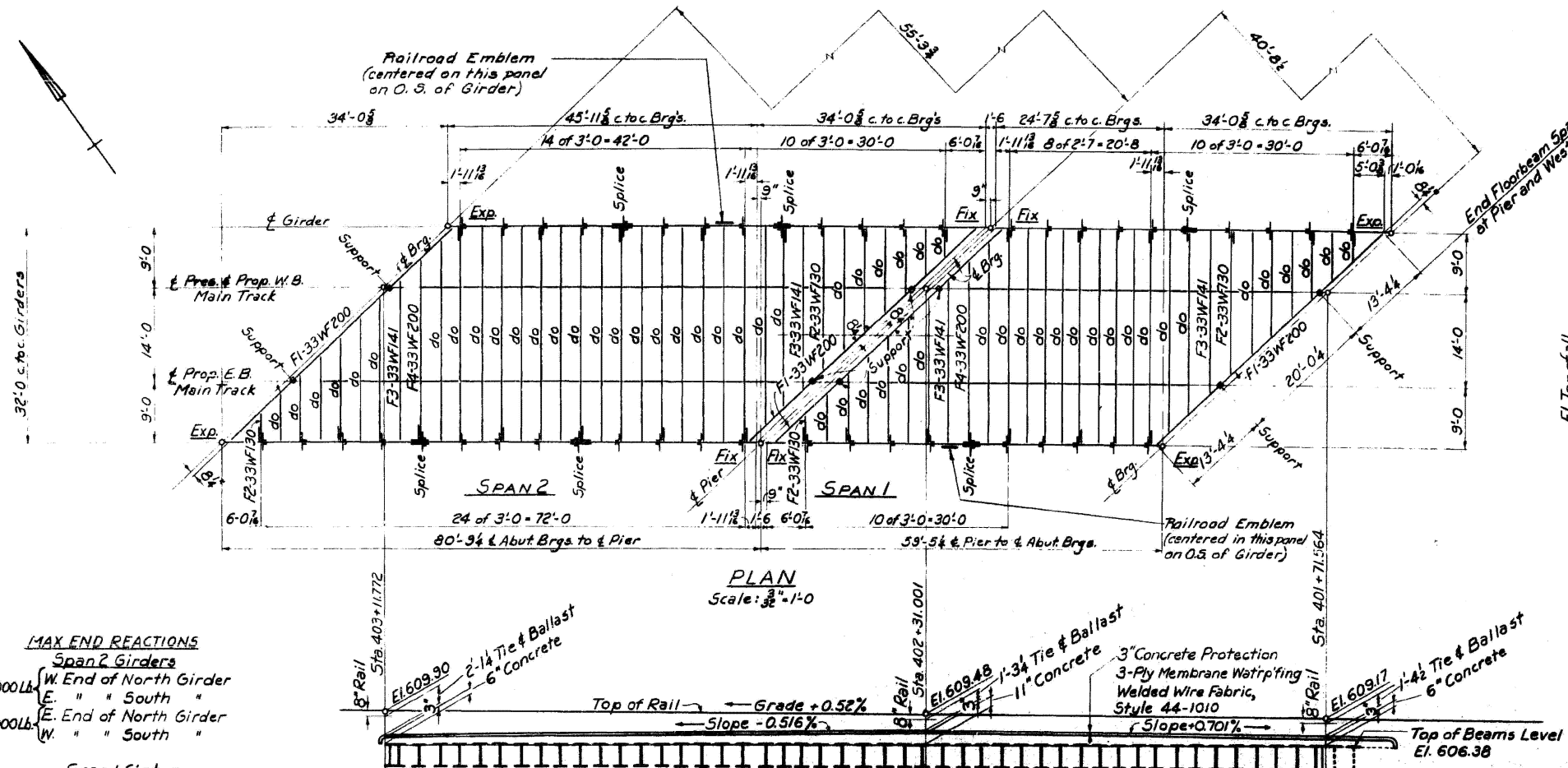
MODEL: Detour Route (Sheet)  
 FILE NAME: c:\pwworking\robert.torchalski@illinois.gov\d1191709\104026-shh-details.dgn

USER NAME = robert.torchalski	DESIGNED -	REVISED -
	DRAWN -	REVISED -
	CHECKED -	REVISED -
PLOT DATE = 3/9/2026	DATE -	REVISED -

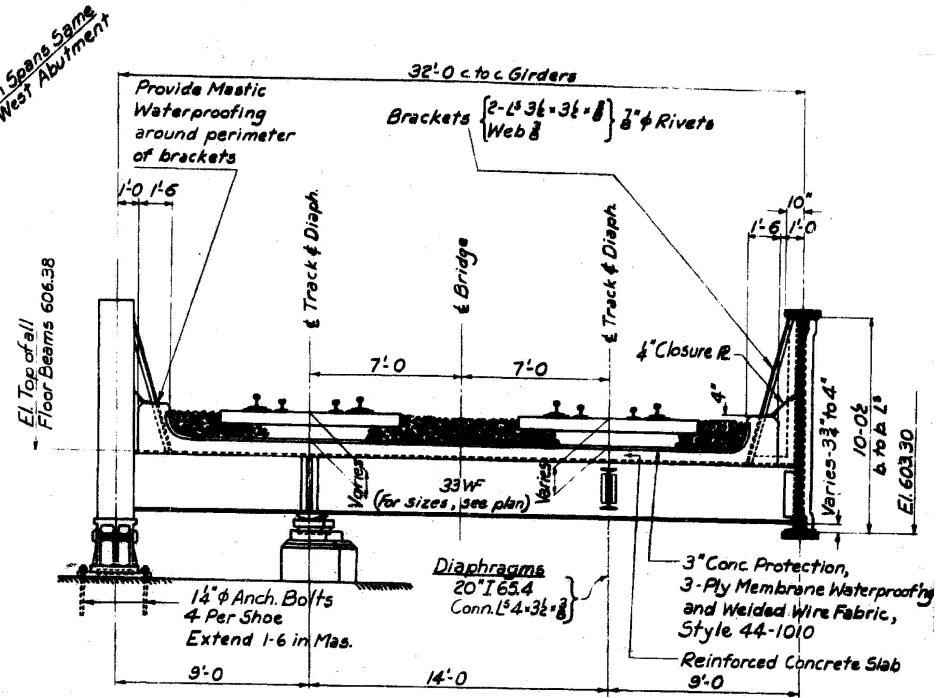
**STATE OF ILLINOIS**  
**DEPARTMENT OF TRANSPORTATION**

<b>DETOUR ROUTE</b>			
<b>US 12/20 (95th ST) AT IHB RAILROAD</b>			
SCALE:	SHEET 1	OF 1	SHEETS
	STA.		TO STA.

F.A.P. RTE.	SECTION	COUNTY	TOTAL SHEETS	SHEET NO.
29	(29R-SF) BP 25	COOK	17	5
CONTRACT NO. 80B51				
ILLINOIS FED. AID PROJECT				



PLAN  
Scale: 3/8" = 1'-0"



HALF END VIEW  
Scale: 1/4" = 1'-0"

**MAX END REACTIONS**

**Span 2 Girders**

940,000 lb.	W. End of North Girder
E. " " South "	
548,000 lb.	E. End of North Girder
W. " " South "	

**Span 1 Girders**

6710,000 lb.	W. End of North Girder
E. " " South "	
3070,000 lb.	E. End of North Girder
W. " " South "	

SECTION ON & WESTBOUND TRACK

**DESIGN SCHEDULE**

**SPAN 2 - NORTH AND SOUTH GIRDERS**  
81'-11 3/8" O. to O., 80'-0 1/4" C. to C. Brgs., 10'-0 1/2" B. to B. Flg. L<sup>s</sup>  
Max. End Shear = 694,200 Lb.  
894,200 ÷ 11,000 = 81.3 Sq. In. Req'd.  
Rivet Pitch for Web - 3" @ Ends, 4" @ 4 Pts., 4 3/4" @ Center  
Web 120 x 1/2" = 82.50 Sq. In. Furnished  
End Stiffeners 4 L<sup>s</sup> 6 x 4 x 3/8" - Fills.  
4 R<sup>s</sup> 6 x 3/8"  
Int. Stiffeners 1 L 6 x 4 x 1/2" & Fill 4" x 1" - I.S.  
1 L 6 x 4 x 1/8" - Crimped - O.S.

Section	Net Area (One Flg.)
Web - 120 x 1/2" (Spliced)	10.31
2 - L <sup>s</sup> 8 x 8 x 1 (Not Spliced)	23.25
1 - Cov. R. 20 x 3/8" F.L. - T. & B.	15.04
1 - Cov. R. 20 x 3/8" 6' - T. & B.	15.04
1 - Cov. R. 20 x 3/8" 5' - T. & B.	15.04
1 - Cov. R. 20 x 3/8" 37' - T. & B.	15.04
<b>See Sketch</b>	<b>93.72</b>
Net S.M. Furn'd	= 10846

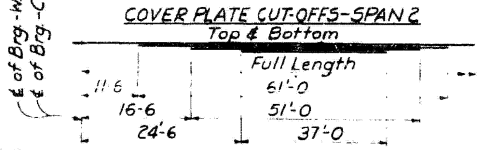
4 Lines of Rivets in Cov. R<sup>s</sup>. (Pitch: 3 1/4" min., 4 3/4" max.)  
Web Splices 2 - R<sup>s</sup> 23 1/2" x 1/2" on Web  
4 - R<sup>s</sup> 6 1/4" x 1/2" on Flg. L<sup>s</sup>

**SPAN 1 - NORTH AND SOUTH GIRDERS**  
60'-7 3/8" O. to O., 58'-8 1/4" C. to C. Brgs., 10'-0 1/2" B. to B. Flg. L<sup>s</sup>  
Max. End Shear = 661,800 Lb.  
661,800 ÷ 11,000 = 60.2 Sq. In. Req'd.  
Rivet Pitch for Web - 3 1/4" @ Ends, 4 1/2" @ 4 Pts., 4 3/4" @ Center  
Web 120 x 1/2" = 67.50 Sq. In. Furnished  
End Stiffeners 4 L<sup>s</sup> 6 x 4 x 3/8"  
4 R<sup>s</sup> 6 x 3/8"  
Int. Stiffeners 1 L 6 x 4 x 1/2" & Fill 4" x 1" - I.S.  
1 L 6 x 4 x 1/8" - Crimped - O.S.

Section	Net Area (One Flg.)
Web - 120 x 1/2" (Spliced)	8.43
2 - L <sup>s</sup> 8 x 8 x 1 (Not Spliced)	23.25
1 - Cov. R. 20 x 3/8" (F.L. - T. & B.)	15.04
<b>See Sketch</b>	<b>46.72</b>
Net S.M. Furn'd	= 5342

4 Lines of Rivets in Cov. R<sup>s</sup>. (Pitch: 3 1/4" min., 4 3/4" max.)  
Web Splices 2 - R<sup>s</sup> 23 1/2" x 1/2" on Web  
4 - R<sup>s</sup> 6 1/4" x 1/2" on Flg. L<sup>s</sup>

**Note**  
Girders in each span are symmetrical by rotation except for rounded ends at abutments and end distance beyond & of Brg.



**FOR INFORMATION ONLY**

MODEL: Bridge Plans - 01 (Sheet)  
FILE NAME: c:\pwworking\robtorchalski\illinois.gov\11917081D\104026-shi-plan.dgn

USER NAME = robert.torchalski	DESIGNED -	REVISED -
	DRAWN -	REVISED -
	CHECKED -	REVISED -
PLOT DATE = 3/2/2026	DATE -	REVISED -

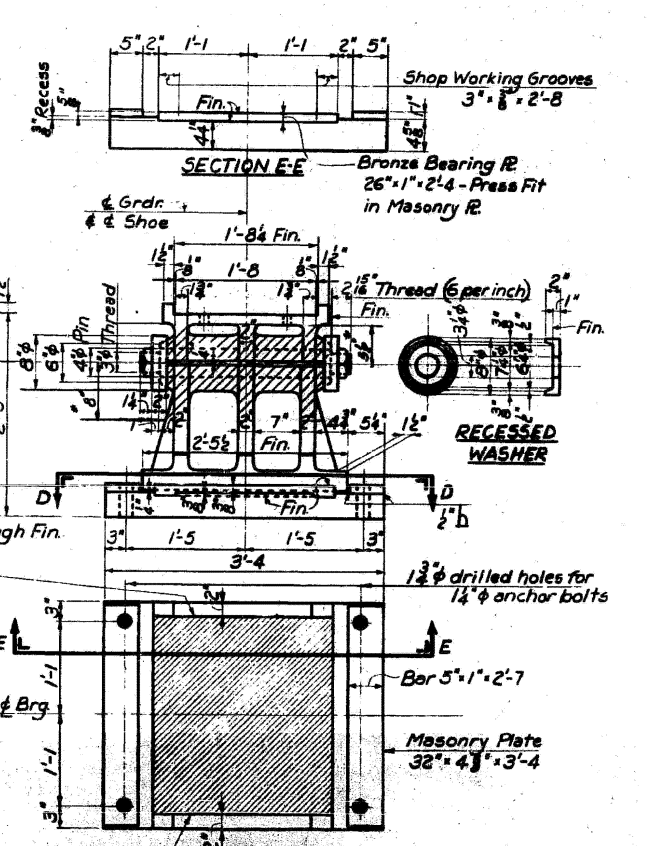
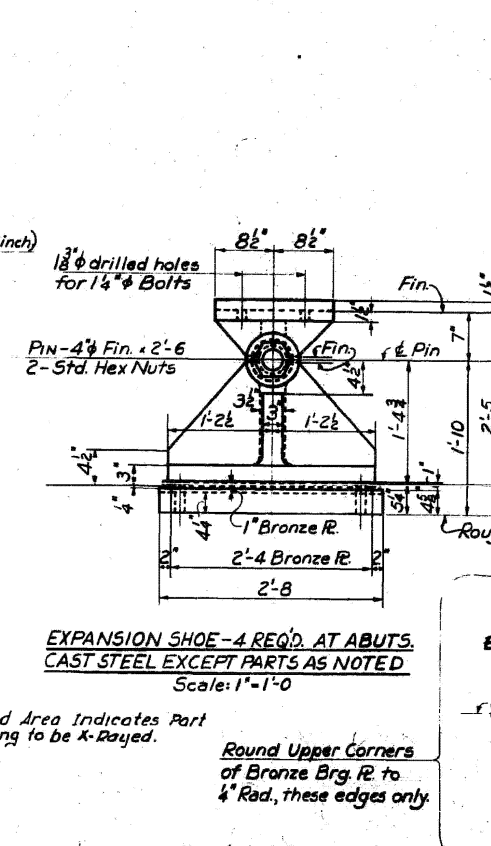
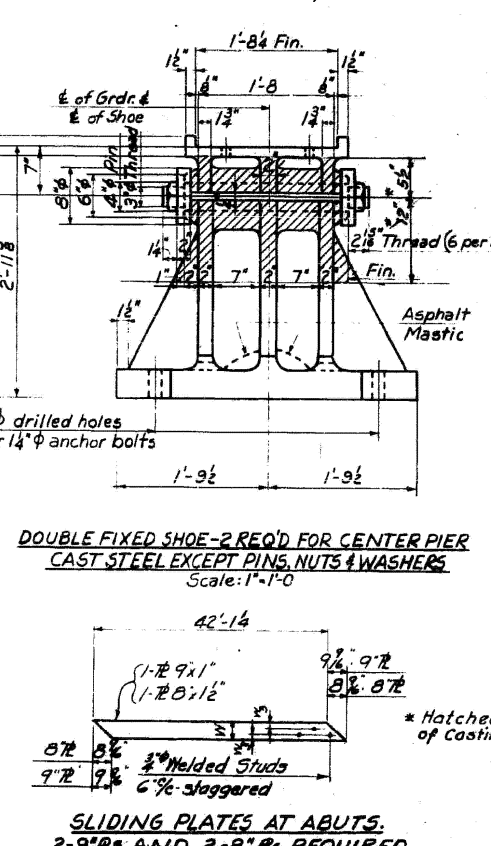
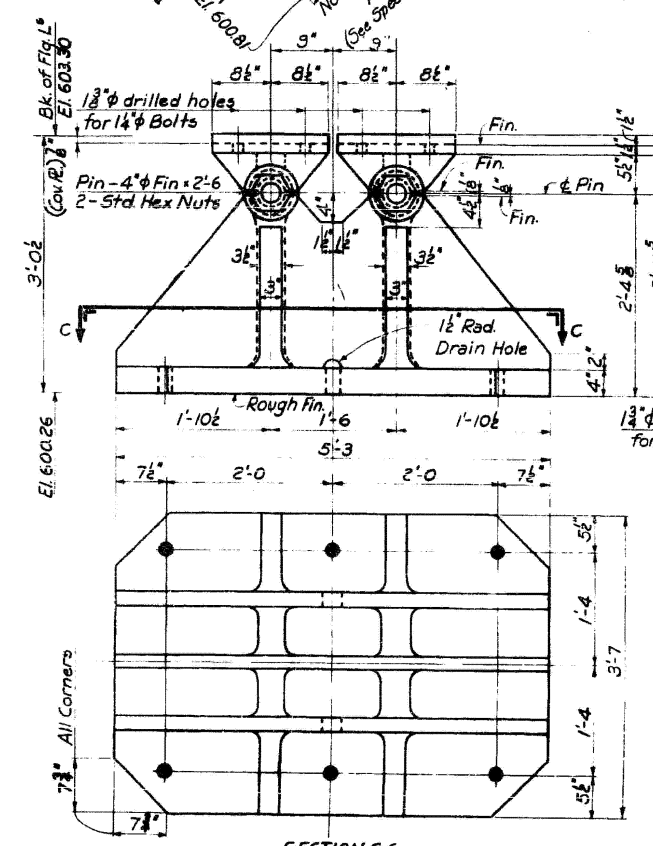
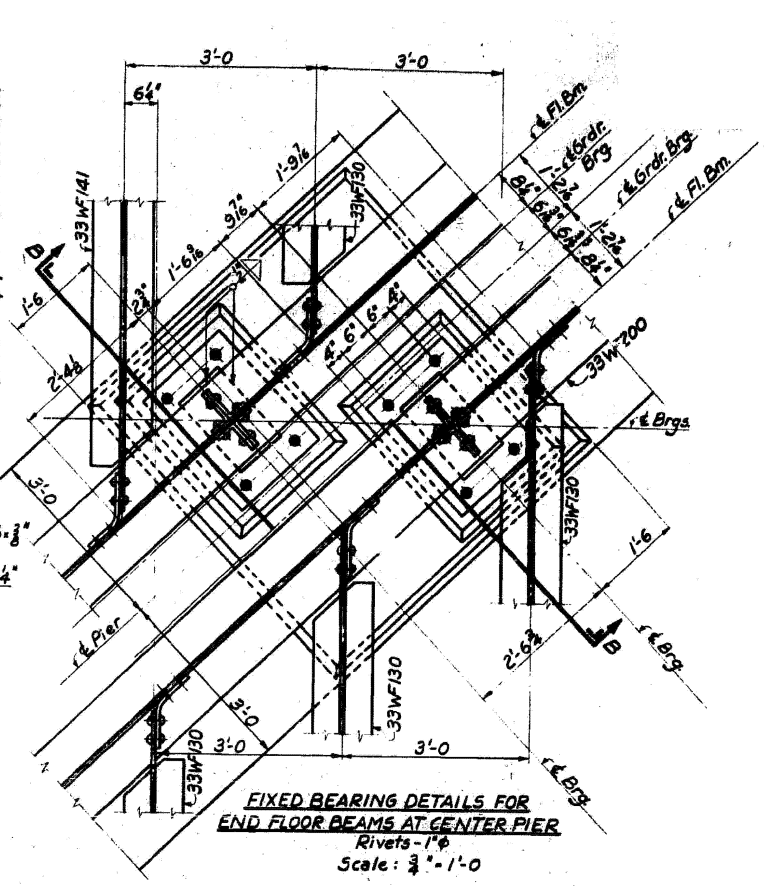
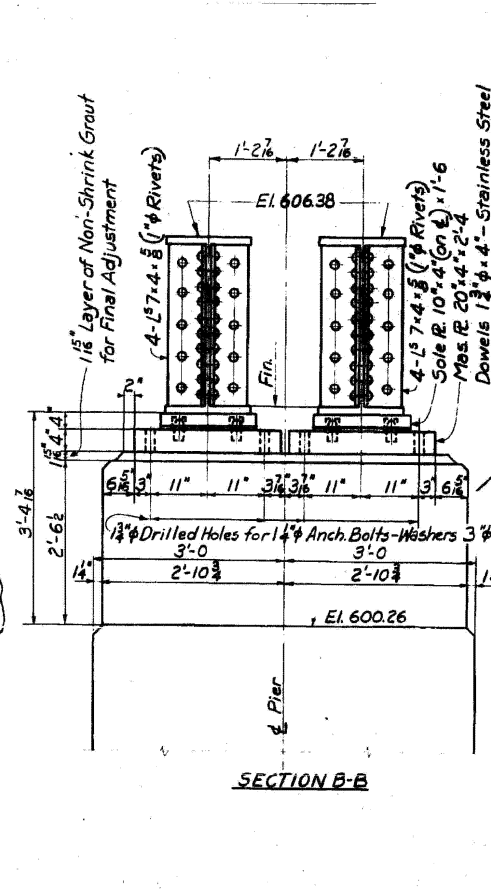
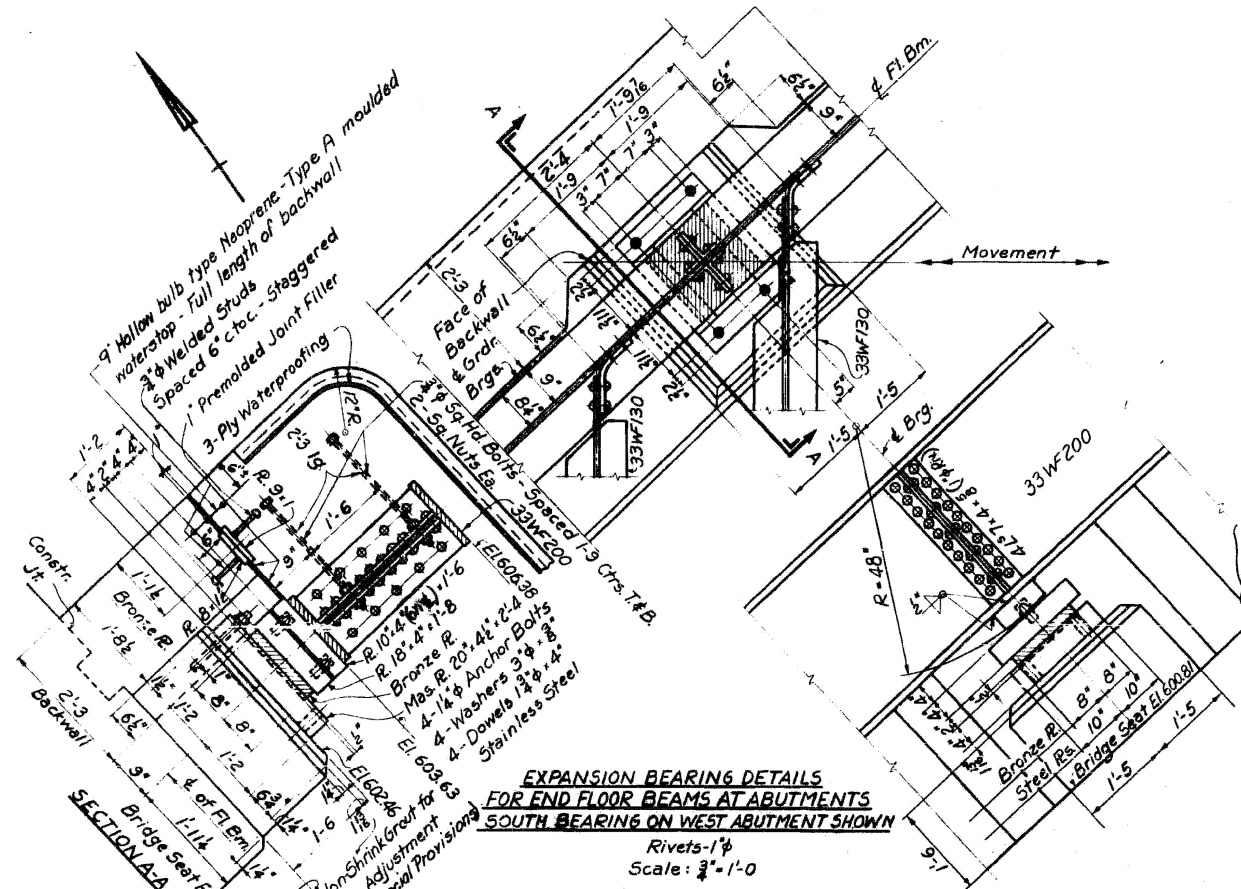
STATE OF ILLINOIS  
DEPARTMENT OF TRANSPORTATION

EXISTING BRIDGE PLANS  
IHB RAILROAD OVER US 12/20 (SN 016-0436)

SCALE: SHEET 1 OF 3 SHEETS STA. TO STA.

F.A.P. RTE.	SECTION	COUNTY	TOTAL SHEETS	SHEET NO.
29	(29R-SF) BP 25	COOK	17	6
CONTRACT NO. 80B51				
ILLINOIS FED. AID PROJECT				





**FOR INFORMATION ONLY**

MODEL: Bridge Plans - 03 (Sheet)  
FILE NAME: c:\pwworking\robert.torchalski@illinois.gov\d1191709\104026-shr-plan.dgn

USER NAME = robert.torchalski	DESIGNED -	REVISED -
	DRAWN -	REVISED -
	CHECKED -	REVISED -
PLOT DATE = 3/5/2026	DATE -	REVISED -

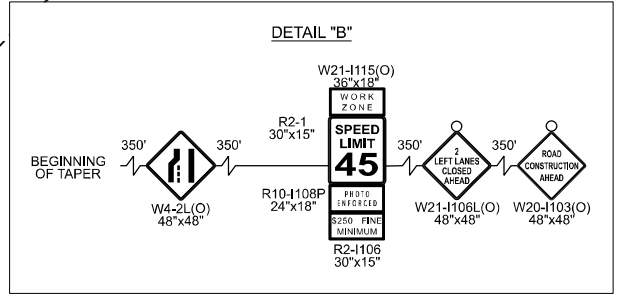
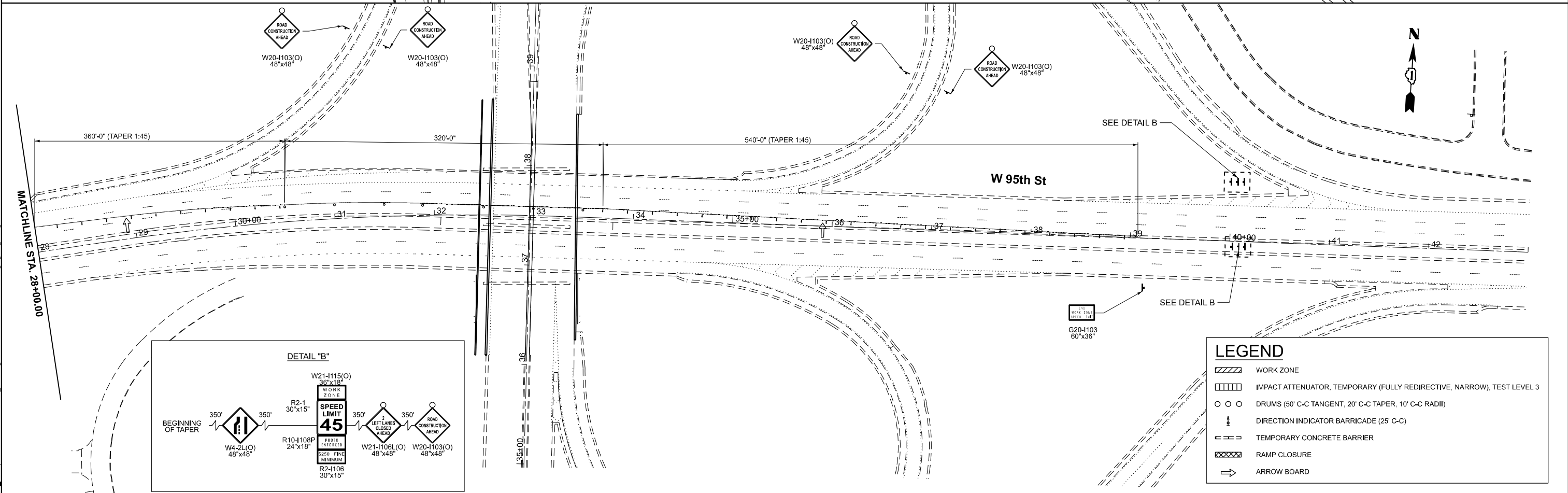
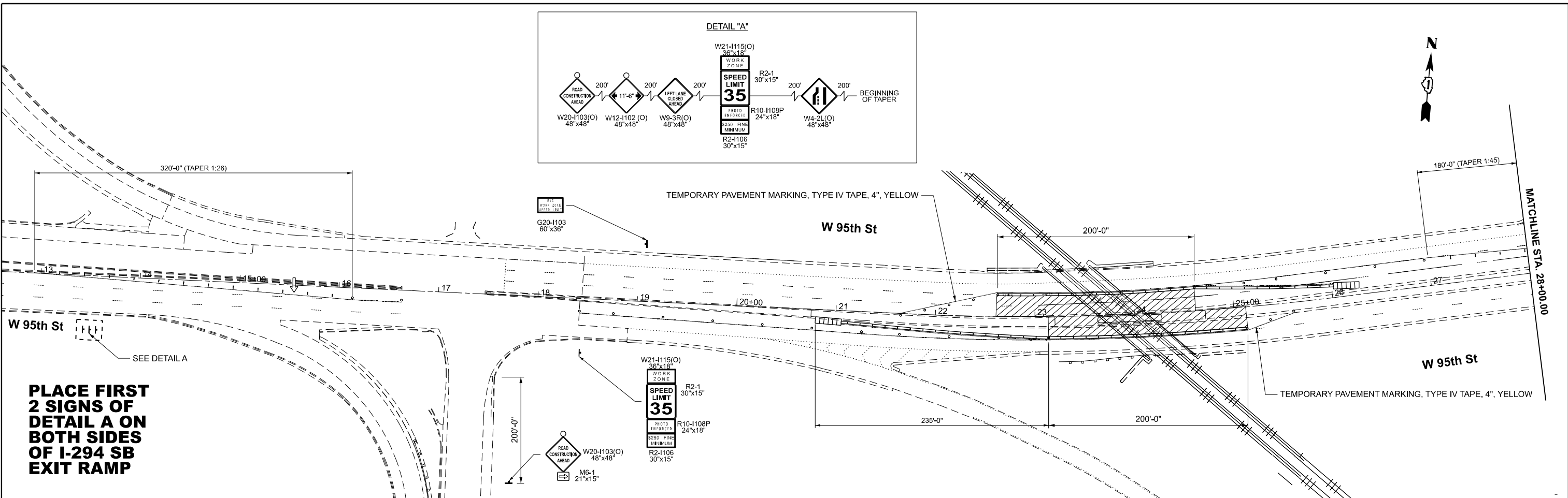
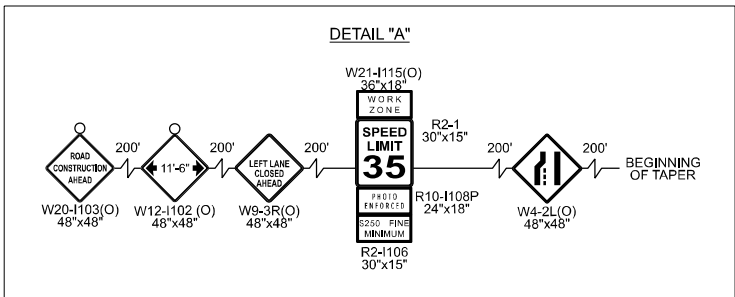
STATE OF ILLINOIS  
DEPARTMENT OF TRANSPORTATION

EXISTING BRIDGE PLANS  
IHB RAILROAD OVER US 12/20 (SN 016-0436)

SCALE: SHEET 3 OF 3 SHEETS STA. TO STA.

F.A.P. RTE. 29	SECTION (29R-SF) BP 25	COUNTY COOK	TOTAL SHEETS 17	SHEET NO. 8
CONTRACT NO. 80B51				
ILLINOIS FED. AID PROJECT				





LEGEND	
	WORK ZONE
	IMPACT ATTENUATOR, TEMPORARY (FULLY REDIRECTIVE, NARROW), TEST LEVEL 3
	DRUMS (50' C-C TANGENT, 20' C-C TAPER, 10' C-C RADIUS)
	DIRECTION INDICATOR BARRICADE (25' C-C)
	TEMPORARY CONCRETE BARRIER
	RAMP CLOSURE
	ARROW BOARD

MODEL: I:\12 95TH STA-2 - Stage2.MOT (Sheet)  
 FILE NAME: c:\pwworking\robert.torchalski@illinois.gov\d1191709\104026-shs-stage2.dgn

USER NAME = robert.torchalski	DESIGNED -	REVISED -
	DRAWN -	REVISED -
	CHECKED -	REVISED -
PLOT DATE = 3/9/2026	DATE -	REVISED -

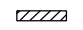
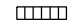


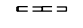
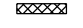
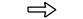
**STATE OF ILLINOIS**  
**DEPARTMENT OF TRANSPORTATION**

**SUGGESTED MAINTENANCE OF TRAFFIC - STAGE II**  
**US 12/20 (95TH ST) AT IHB RAILROAD**

SCALE: 1"=50'    SHEET 2 OF 3 SHEETS    STA. 13+00.00 TO STA. 43+00.00

F.A.P. RTE.	SECTION	COUNTY	TOTAL SHEETS	SHEET NO.
29	(29R-SF) BP 25	COOK	17	10
CONTRACT NO. 80B51				
ILLINOIS FED. AID PROJECT				

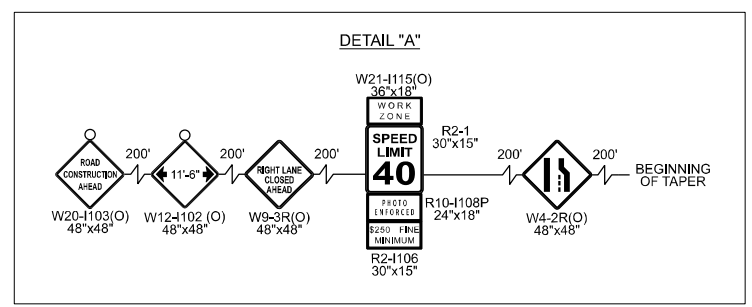
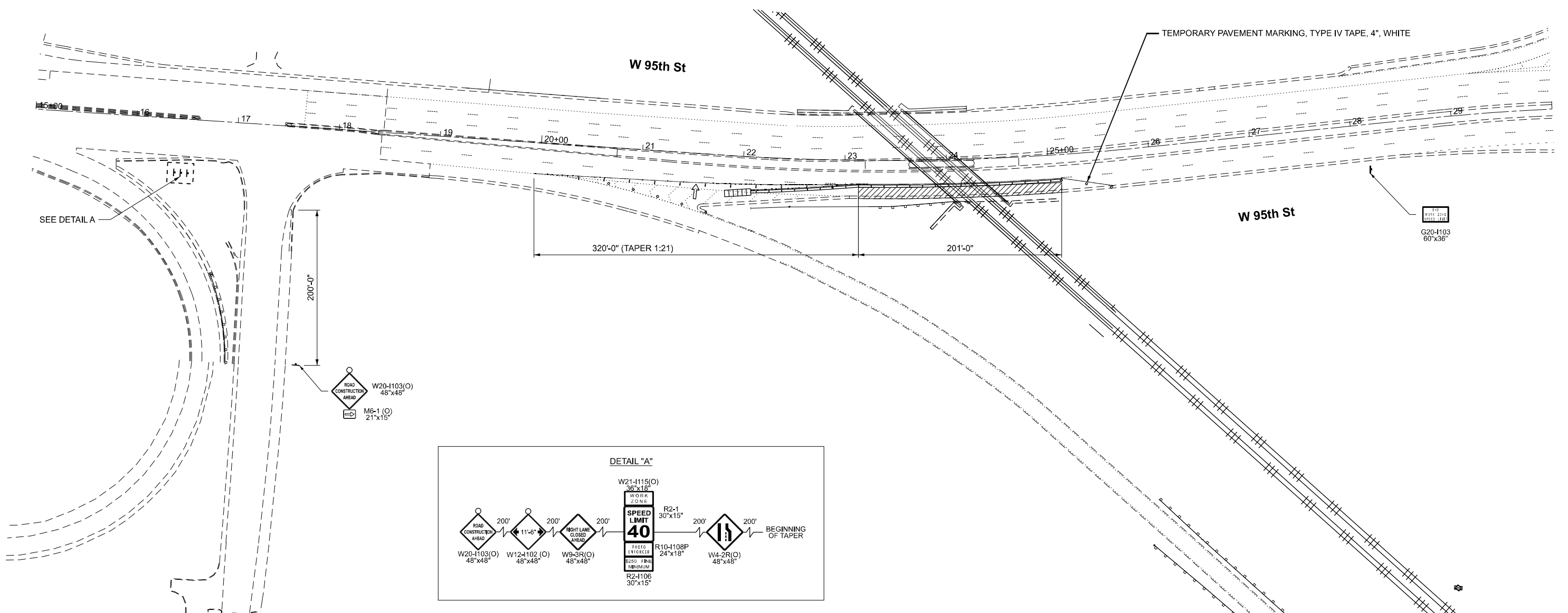
**LEGEND**

-  WORK ZONE
-  IMPACT ATTENUATOR, TEMPORARY (FULLY REDIRECTIVE, NARROW), TEST LEVEL 3
-  DRUMS (50' C-C TANGENT, 20' C-C TAPER, 10' C-C RADII)
-  DIRECTION INDICATOR BARRICADE (25' C-C)
-  TEMPORARY CONCRETE BARRIER
-  RAMP CLOSURE
-  ARROW BOARD



**'45' MPH SPEED LIMIT SIGNS BETWEEN 76th AVE AND THE WORKZONE ON EB 95th ST SHALL BE COVERED**

**PLACE FIRST 2 SIGNS OF DETAIL A ON BOTH SIDES OF I-294 SB EXIT RAMP**



MODEL: IUS 12 20 95TH SK-1 - Stage 3 MOT (Sheet)  
FILE NAME: c:\pwworking\robert.torchalski@illinois.gov\d1191709\104026-shh-stage3.dgn

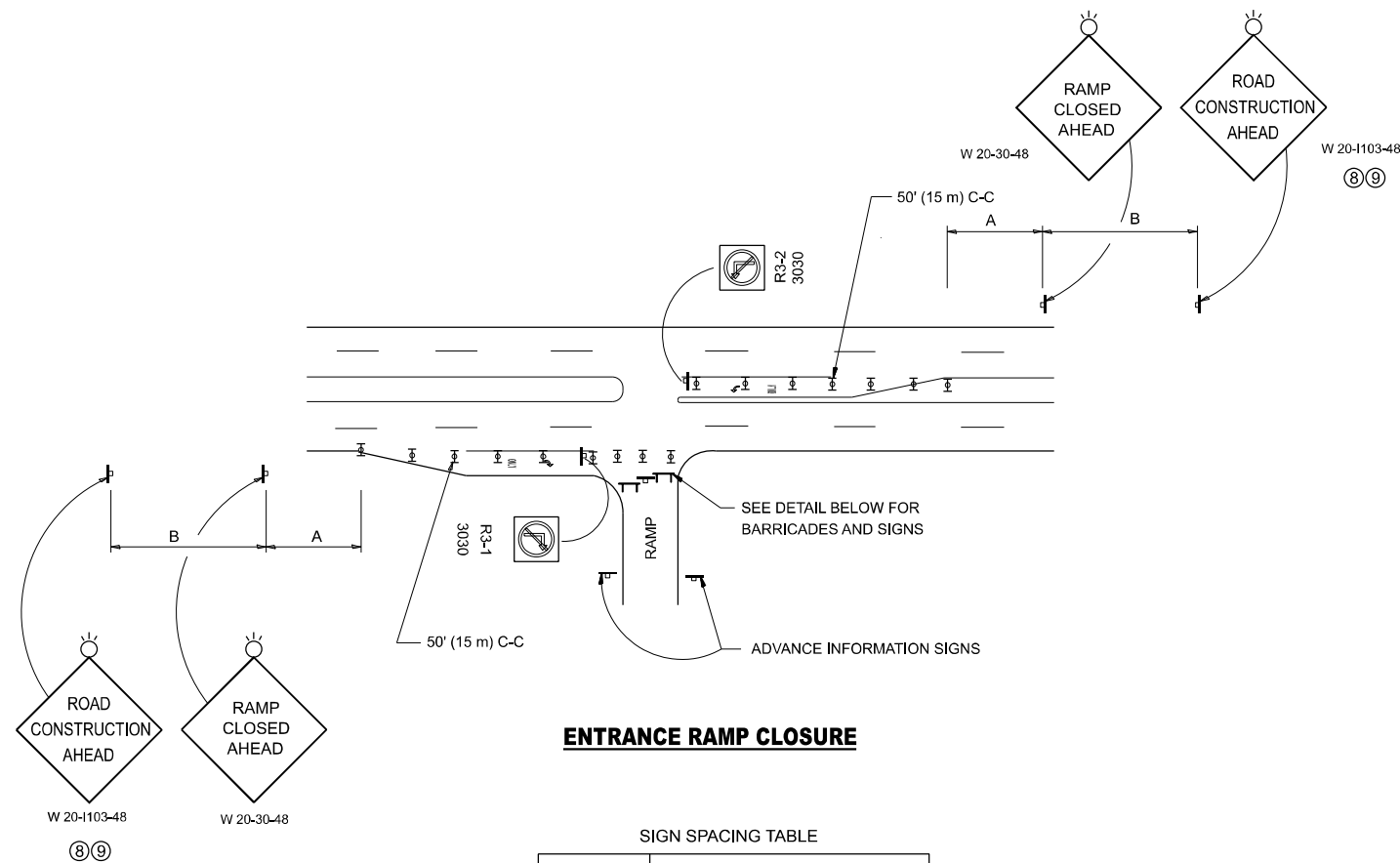
USER NAME = robert.torchalski	DESIGNED -	REVISED -
	DRAWN -	REVISED -
	CHECKED -	REVISED -
PLOT DATE = 3/10/2026	DATE -	REVISED -

**STATE OF ILLINOIS  
DEPARTMENT OF TRANSPORTATION**

**SUGGESTED MAINTENANCE OF TRAFFIC - STAGE III  
US 12/20 (95TH ST) AT IHB RAILROAD**

SCALE: 1"=50'    SHEET 3 OF 3 SHEETS    STA. 15+00.00 TO STA. 30+00.00

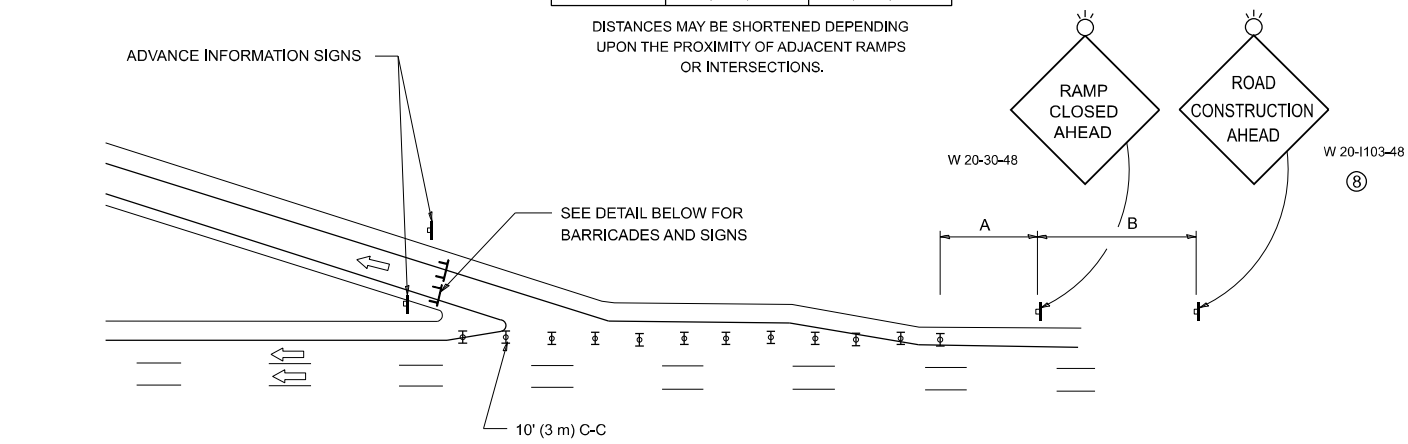
F.A.P. RTE.	SECTION	COUNTY	TOTAL SHEETS	SHEET NO.
29	(29R-SF) BP 25	COOK	17	11
CONTRACT NO. 80B51				
ILLINOIS FED. AID PROJECT				



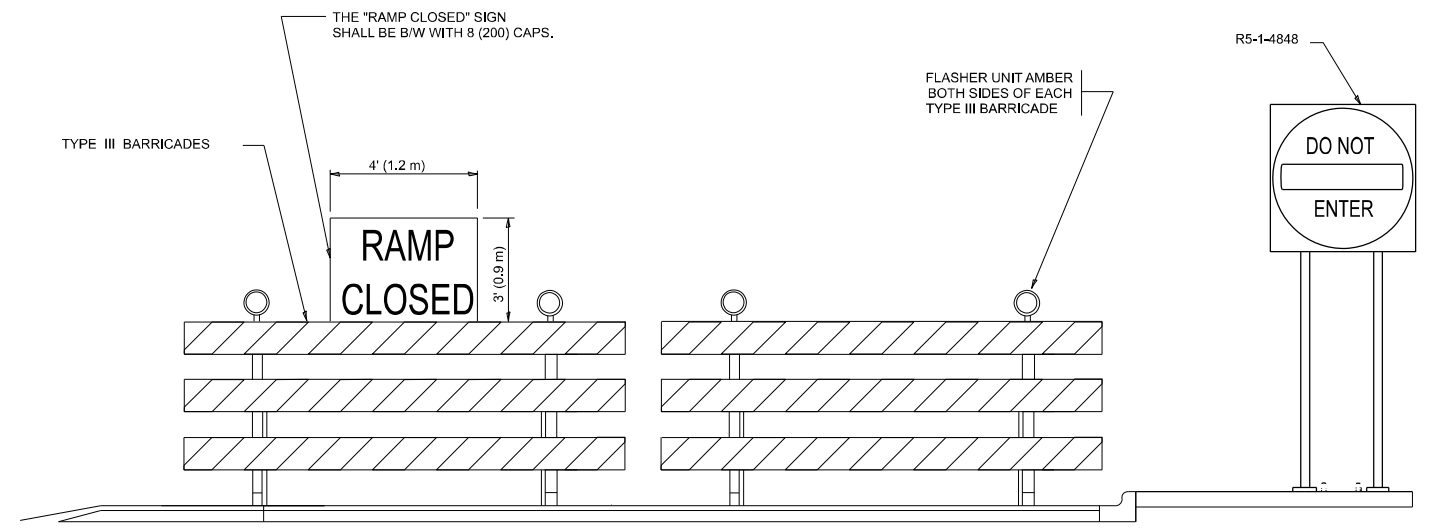
SIGN SPACING TABLE

FACILITY	DISTANCE BETWEEN SIGNS	
	A	B
EXPRESSWAY >24 HOURS	1000' (300 m)	1500' (450 m)
EXPRESSWAY ≤24 HOURS	500' (150 m)	500' (150 m)
ARTERIAL 55 MPH	500' (150 m)	500' (150 m)
ARTERIAL 50-45 MPH	350' (100 m)	350' (100 m)
ARTERIAL <45 MPH	200' (60 m)	200' (60 m)

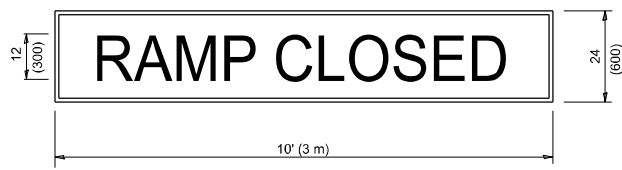
DISTANCES MAY BE SHORTENED DEPENDING UPON THE PROXIMITY OF ADJACENT RAMPS OR INTERSECTIONS.



- SYMBOLS**
- ▬ TYPE II BARRICADE OR DRUM
  - ▬ TYPE III BARRICADE WITH 2 FLASHING LIGHTS



**RAMP CLOSURE ADVANCE WARNING SIGN**



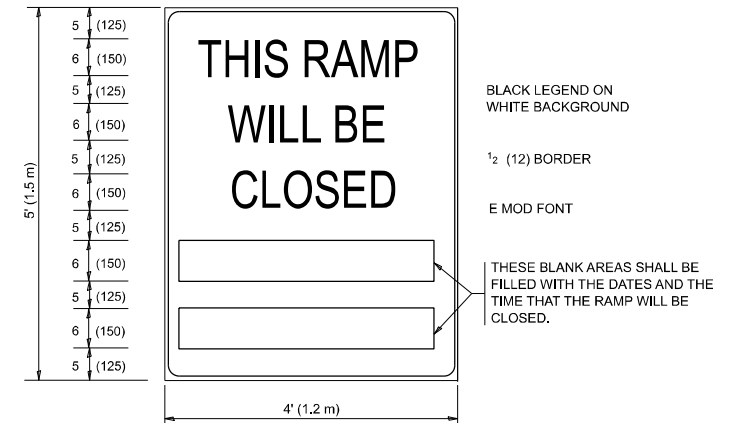
BLACK LEGEND ON ORANGE BACKGROUND MOUNTED DIAGONALLY  
E MOD FONT  
1 (25) BORDER

THESE SIGNS ARE REQUIRED ON ALL THE EXIT GUIDE SIGNS FOR EXIT RAMPS THAT WILL BE CLOSED FOR MORE THAN FOUR (4) CONSECUTIVE DAYS.

THESE SIGNS ARE REQUIRED ON BOTH SIDES OF THE RAMP, MINIMUM OF 1 WEEK IN ADVANCE OF THE CLOSURE.

THESE SIGNS SHALL BE FABRICATED AND PAID FOR ACCORDING TO THE TEMPORARY INFORMATION SIGNING SPECIAL PROVISION

**RAMP CLOSURE ADVANCE INFORMATION SIGN**



**GENERAL NOTES:**

- ① CONES MAY BE SUBSTITUTED FOR DRUMS OR TYPE II BARRICADES DURING DAY OPERATIONS. CONES SHALL BE A MINIMUM OF 28 (700) HIGH.
- ② VERTICAL BARRICADES SHALL NOT BE USED FOR RAMP CLOSURES.
- ③ A FLAGGER SHALL BE POSITIONED AT EACH CLOSED RAMP THAT IS OPEN TO CONSTRUCTION VEHICLES, PRECEDED BY A W20-7 FLAGGER WARNING SIGN.
- ④ ALL ROUTE MARKERS AND TRAILBLAZER ASSEMBLIES WHICH DIRECT MOTORISTS TO A CLOSED ENTRANCE RAMP SHALL BE COVERED WHEN THE RAMP IS CLOSED FOR MORE THAN FOUR (4) DAYS.
- ⑤ THE SIGNING AND BARRICADING WHICH IS REQUIRED BY THIS DETAIL SHALL BE INCLUDED IN THE COST OF TRAFFIC CONTROL AND PROTECTION (EXPRESSWAYS).
- ⑥ AUTHORIZATION FROM THE DISTRICT'S BUREAU OF TRAFFIC IS REQUIRED FOR ALL RAMP CLOSURES.
- ⑦ THE RAMP CLOSURE ADVANCE INFORMATION SIGNS SHALL BE ERECTED IF THE CLOSURE TIME EXCEEDS TWENTY-FOUR (24) HOURS. ADDITIONAL ADVANCE WARNING SIGNS ON EXIT GUIDE SIGNING WILL BE REQUIRED FOR EXIT RAMP CLOSURES THAT EXCEED FOUR (4) DAYS IN LENGTH
- ⑧ ROAD CONSTRUCTION AHEAD SIGNS MAY BE OMITTED WHEN THIS DETAIL IS USED IN CONJUNCTION WITH OTHER TRAFFIC CONTROL THAT ALREADY INCLUDES A ROAD CONSTRUCTION AHEAD SIGN.
- ⑨ ARTERIAL ROAD CONSTRUCTION AHEAD SIGNS SHALL BE INSTALLED ON THE LEFT SIDE OF TRAFFIC IF THE MEDIAN IS MORE THAN 10 FT WIDE.

ALL DIMENSIONS ARE IN INCHES (MILLIMETERS) UNLESS OTHERWISE SHOWN.

MODEL: TC-08 (Sheet)  
FILE NAME: c:\p\work\robert.torchalski@illinois.gov\1191709\104026-shl-DistSigns.dgn

USER NAME = robert.torchalski	DESIGNED - D.W.S.	REVISED - S.P.B._12-09
	DRAWN - M.D._06-13	REVISED - M.D._06-13
	CHECKED -	REVISED - M.D._01-18
PLOT DATE = 2/24/2026	DATE - 02-83	REVISED - D.S._05-24

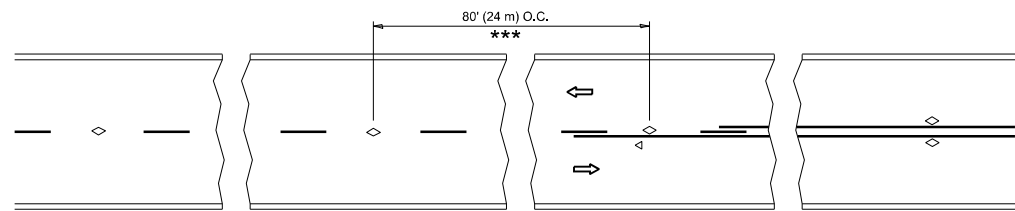
STATE OF ILLINOIS  
DEPARTMENT OF TRANSPORTATION

ENTRANCE AND EXIT RAMP  
CLOSURE DETAILS

SCALE: NONE SHEET 1 OF 1 SHEETS STA. TO STA.

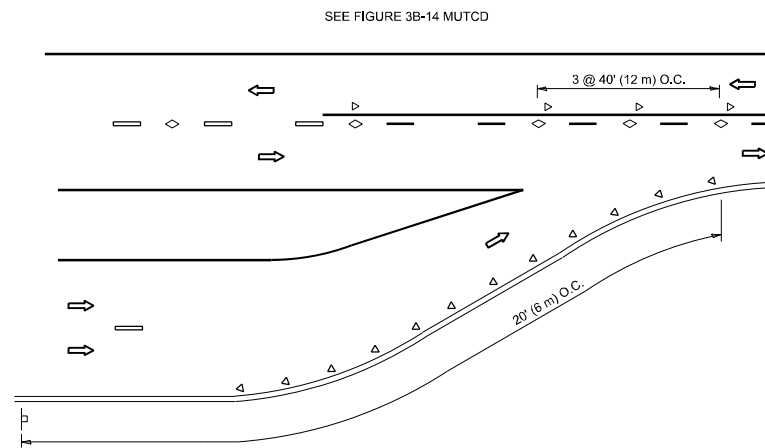
F.A.P RTE.	SECTION	COUNTY	TOTAL SHEETS	SHEET NO.
29	(29R-SF) BP 25	COOK	17	12
TC-08		CONTRACT NO. 80B51		
ILLINOIS		FED. AID PROJECT		



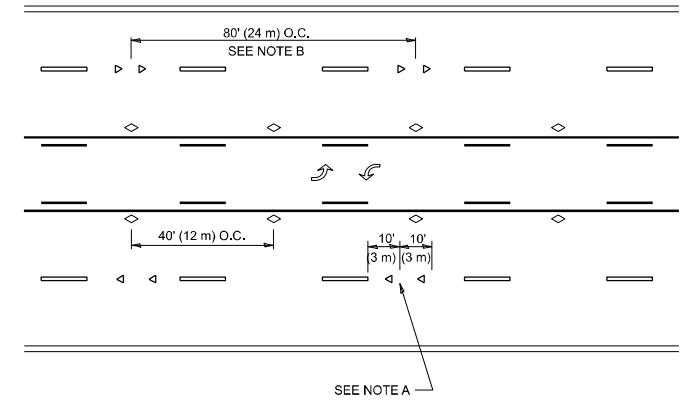


\*\*\* REDUCE TO 40' (12 m) O.C. ON CURVES WITH POSTED OR ADVISORY SPEED 45 M.P.H. (70 km/h) OR LESS.

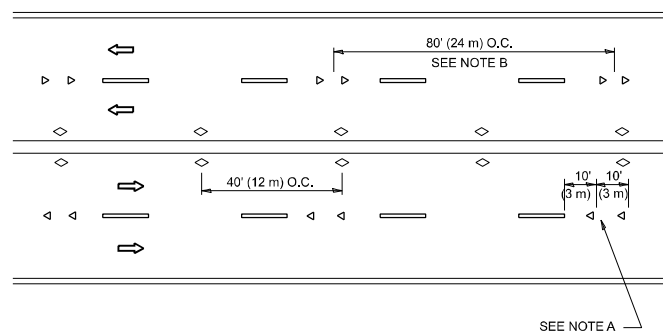
### TWO-LANE/TWO-WAY



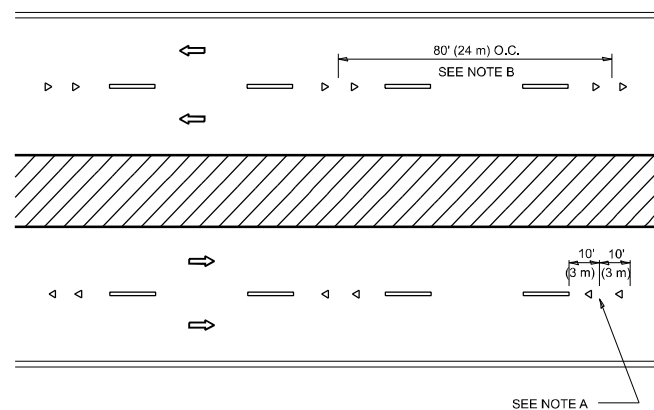
### LANE REDUCTION TRANSITION



### TWO-WAY LEFT TURN



### MULTI-LANE/UNDIVIDED



### MULTI-LANE/DIVIDED

### GENERAL NOTES

- MARKERS USED WITH DASHED LINES SHALL BE CENTERED IN THE GAP BETWEEN SEGMENTS.
- MARKERS USED ADJACENT TO SOLID LINES SHALL BE OFFSET 2 TO 3 (50 TO 75) TOWARD TRAFFIC AS SHOWN.
- MARKERS THROUGH TANGENTS LESS THAN 500' (150 m) IN LENGTH BETWEEN CURVES SHALL BE INSTALLED AT THE LESSER OF THE TWO CURVE SPACINGS.
- MARKERS ARE TO BE USED ADJACENT TO BOTH SOLID WHITE LINES IN DUAL LEFT TURN LANES

### SYMBOLS

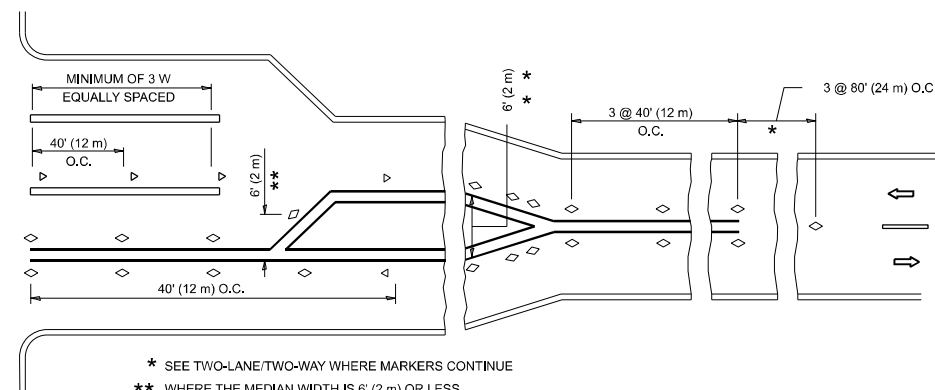
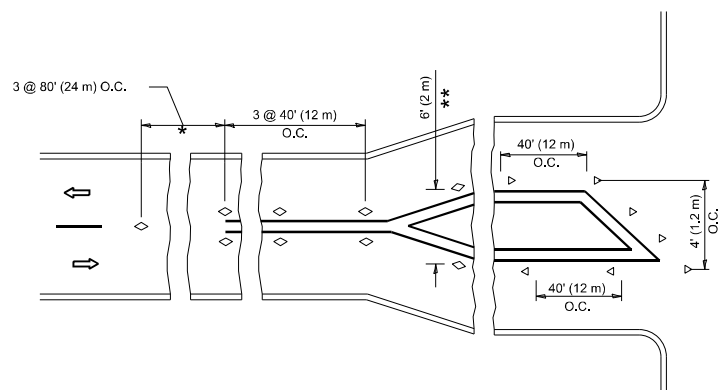
- YELLOW STRIPE
- WHITE STRIPE
- ◁ ONE-WAY AMBER MARKER
- ◁ ONE-WAY CRYSTAL MARKER (W/O)
- ◇ TWO-WAY AMBER MARKER

### LANE MARKER NOTES

- USE DOUBLE LANE LINE MARKERS SPACED AS SHOWN.
- REDUCE TO 40' (12 m) O.C. ON CURVES WHERE ADVISORY SPEEDS ARE 10 M.P.H (20 km/h) LOWER THAN POSTED SPEEDS.

### DESIGN NOTES

- DOUBLE LANE LINE MARKERS SHALL BE USED UNLESS SPECIFIED OTHERWISE.
- EXCEPT AS SHOWN ON THE LANE REDUCTION TRANSITION AND FREEWAY EXIT RAMP DETAIL, MARKERS ARE NOT TO BE SPECIFIED ON RIGHT EDGE LINES.
- THE EXACT MARKER LIMITS, SPACING, AND COLOR SHALL BE INCLUDED IN THE PLANS WHEN STANDARD SPECIFICATIONS ARE NOT BEING USED.
- MARKERS SHOULD NOT BE USED ALONGSIDE CURBS EXCEPT FOR EXTREMELY SHORT SECTIONS OF CURBS WHERE NOT MORE THAN TWO MARKERS WOULD BE INVOLVED.



\* SEE TWO-LANE/TWO-WAY WHERE MARKERS CONTINUE  
 \*\* WHERE THE MEDIAN WIDTH IS 6' (2 m) OR LESS USE TWO-WAY MARKERS.

### TURN LANES

All dimensions are in inches (millimeters) unless otherwise shown.

MODEL: TC-11 (Sheet)  
 FILE NAME: c:\p\work\robert.torchalski@illinois.gov\1191709\104026-shr-Dbs\Std.sds

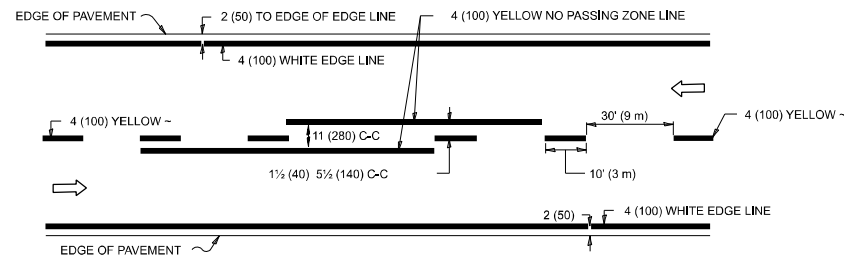
USER NAME = robert.torchalski	DESIGNED -	REVISED - T. RAMMACHER 03-12-99
	DRAWN -	REVISED - T. RAMMACHER 01-06-00
	CHECKED -	REVISED - C. JUCIUS 09-09-09
PLOT DATE = 2/24/2026	DATE -	REVISED - C. JUCIUS 07-01-13

STATE OF ILLINOIS  
 DEPARTMENT OF TRANSPORTATION

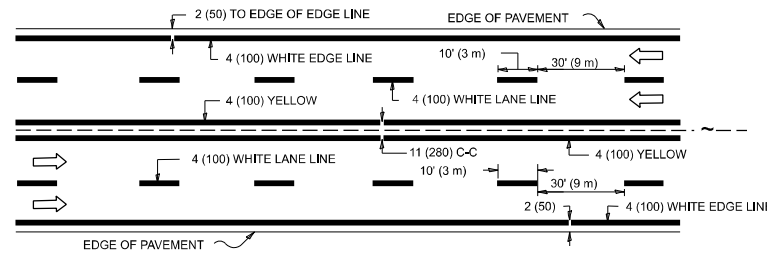
TYPICAL APPLICATIONS  
 RAISED REFLECTIVE PAVEMENT MARKERS (SNOW-PLOW RESISTANT)

SCALE: NONE SHEET 1 OF 1 SHEETS STA. TO STA.

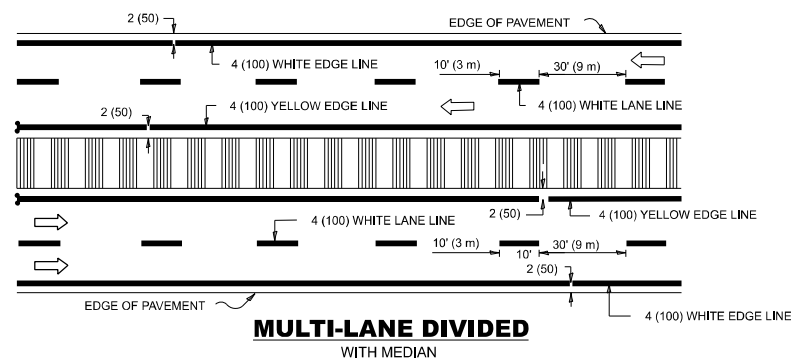
F.A.P. RTE.	SECTION	COUNTY	TOTAL SHEETS	SHEET NO.
29	(29R-SF) BP 25	COOK	17	14
TC-11		CONTRACT NO. 80B51		
ILLINOIS FED. AID PROJECT				



**2-LANE ROADWAY**

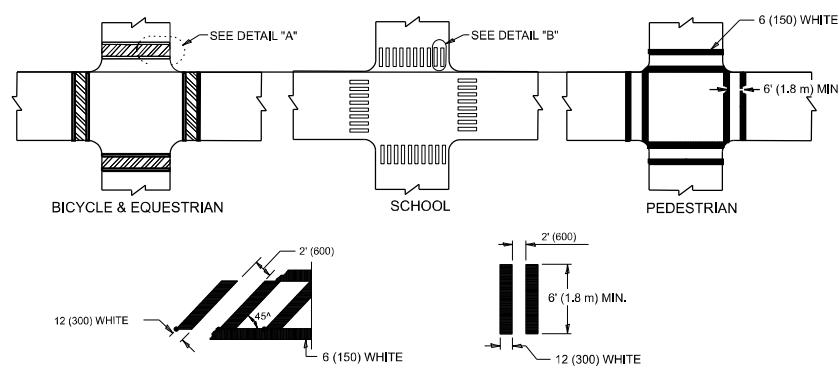


**MULTI-LANE UNDIVIDED**



**MULTI-LANE DIVIDED WITH MEDIAN**

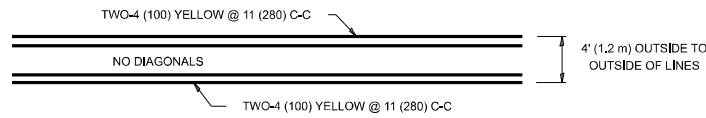
**TYPICAL LANE AND EDGE LINE MARKING**



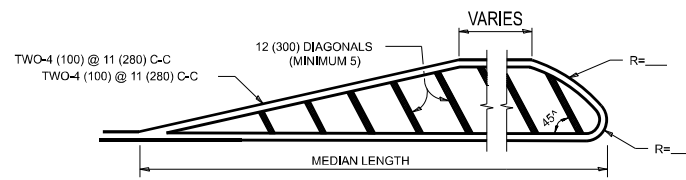
**DETAIL "A"** **DETAIL "B"**

**TYPICAL CROSSWALK MARKING**

\* MARKINGS SHALL BE INSTALLED PARALLEL TO THE CENTERLINE OF THE ROAD WHICH IT CROSSES

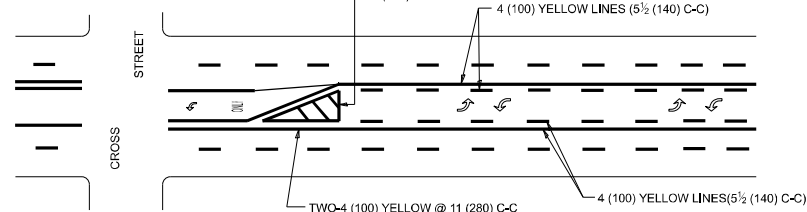


**4' (1.2 m) WIDE MEDIANS ONLY**

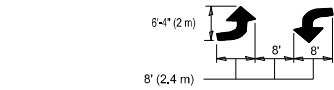


**MEDIANS OVER 4' (1.2 m) WIDE**

DIAGONAL LINE SPACING: 50' (15 m) C-C (LESS THAN 30MPH (50 km/h))  
75' (25 m) C-C 30MPH (50 km/h) TO 45MPH (70 km/h)  
150' (45 m) C-C (MORE THAN 45MPH (70 km/h))

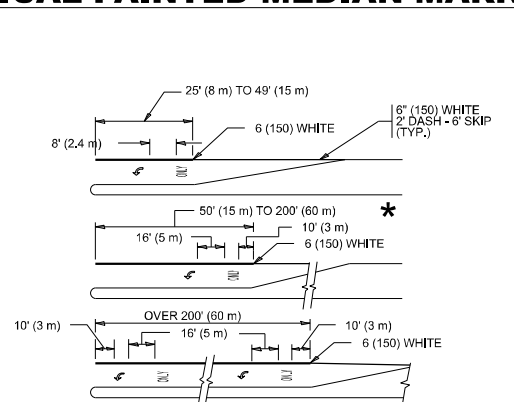


**MEDIAN WITH TWO-WAY LEFT TURN LANE**  
**TYPICAL PAINTED MEDIAN MARKING**



**MEDIAN WITH TWO-WAY LEFT TURN LANE**

**TYPICAL PAINTED MEDIAN MARKING**

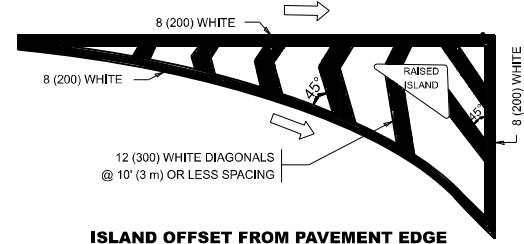


FULL SIZE LETTERS 8" (2.4 m) AND ARROWS SHALL BE USED.  
AREA = 15.6 SQ. FT. (1.5 m<sup>2</sup>) ONLY AREA = 20.8 SQ. FT. (1.9 m<sup>2</sup>)

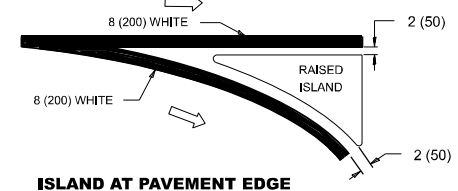
\* TURN LANES IN EXCESS OF 400' (120 m) IN LENGTH MAY HAVE AN ADDITIONAL SET OF ARROW - "ONLY" INSTALLED MIDWAY BETWEEN THE OTHER TWO SETS OF ARROW - "ONLY".

**TYPICAL LEFT (OR RIGHT) TURN LANE**

**TYPICAL TURN LANE MARKING**

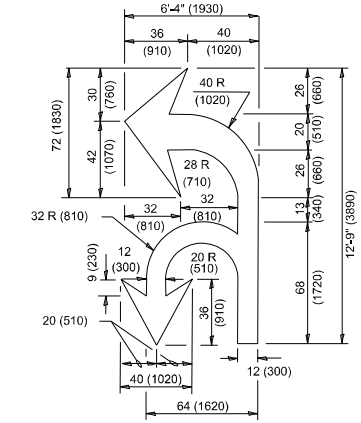


**ISLAND OFFSET FROM PAVEMENT EDGE**

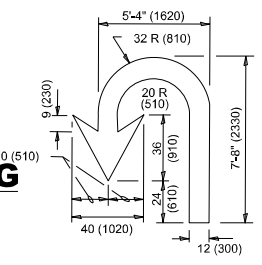


**ISLAND AT PAVEMENT EDGE**

**TYPICAL ISLAND MARKING**



**COMBINATION LEFT AND U-TURN**



**U-TURN**

D(FT)	SPEED LIMIT
345	30
425	35
500	40
580	45
665	50
750	55

**LANE REDUCTION TRANSITION**

\* LANE REDUCTION ARROWS REQUIRED AT SPEEDS OF 45 MPH OR GREATER OR WHEN SPECIFIED IN PLANS.

TYPE OF MARKING	WIDTH OF LINE	PATTERN	COLOR	SPACING / REMARKS
CENTERLINE ON 2 LANE PAVEMENT	4 (100)	SKIP-DASH	YELLOW	10' (3 m) LINE WITH 30' (9 m) SPACE
CENTERLINE ON MULTI-LANE UNDIVIDED PAVEMENT	2 @ 4 (100)	SOLID	YELLOW	11 (280) C-C
NO PASSING ZONE LINES: FOR ONE DIRECTION FOR BOTH DIRECTIONS	4 (100) 2 @ 4 (100)	SOLID SOLID	YELLOW YELLOW	5 1/2 (140) C-C FROM SKIP-DASH CENTERLINE 11 (280) C-C OMIT SKIP-DASH CENTERLINE BETWEEN
LANE LINES	4 (100) 5 (125) ON FREEWAYS	SKIP-DASH SKIP-DASH	WHITE WHITE	10' (3 m) LINE WITH 30' (9 m) SPACE
DOTTED LINES (EXTENSIONS OF CENTER, LANE OR TURN LANE MARKINGS)	SAME AS LINE BEING EXTENDED	SKIP-DASH	SAME AS LINE BEING EXTENDED	2' (600) LINE WITH 6' (1.8 m) SPACE
EDGE LINES	4 (100)	SOLID	YELLOW-LEFT WHITE-RIGHT	OUTLINE MEDIANS IN YELLOW
TURN LANE MARKINGS	6 (150) LINE-FULL SIZE LETTERS & SYMBOLS (8' (2.4m))	SOLID	WHITE	SEE TYPICAL TURN LANE MARKING DETAIL
TWO WAY LEFT TURN MARKING	2 @ 4 (100) EACH DIRECTION 8' (2.4m) LEFT ARROW	SKIP-DASH AND SOLID IN PAIRS	YELLOW WHITE	10' (3 m) LINE WITH 30' (9 m) SPACE FOR SKIP-DASH; 5 1/2 (140) C-C BETWEEN SOLID LINE AND SKIP-DASH LINE SEE TYPICAL TWO-WAY LEFT TURN MARKING DETAIL.
CROSSWALK LINES (PEDESTRIAN) A. DIAGONALS (BIKE & EQUESTRIAN) B. LONGITUDINAL BARS (SCHOOL)	2 @ 6 (150) 12 (300) @ 45° 12 (300) @ 90°	SOLID SOLID SOLID	WHITE WHITE WHITE	NOT LESS THAN 6' (1.8 m) APART 2' (600) APART 2' (600) APART SEE TYPICAL CROSSWALK MARKING DETAILS.
STOP LINES	24 (600)	SOLID	WHITE	PLACE 4' (1.2 m) IN ADVANCE OF AND PARALLEL TO CROSSWALK, IF PRESENT. OTHERWISE, PLACE AT DESIRED STOPPING POINT, PARALLEL TO CROSSROAD CENTERLINE, WHERE POSSIBLE
PAINTED MEDIANS	2 @ 4 (100) WITH 12 (300) DIAGONALS @ 45° NO DIAGONALS USED FOR 4' (1.2 m) WIDE MEDIANS	SOLID	YELLOW: TWO WAY TRAFFIC WHITE: ONE WAY TRAFFIC	11 (280) C-C FOR THE DOUBLE LINE SEE TYPICAL PAINTED MEDIAN MARKING.
GORE MARKING AND CHANNELIZING LINES	8 (200) WITH 12 (300) DIAGONALS @ 45°	SOLID	WHITE	DIAGONALS: 15' (4.5 m) C-C (LESS THAN 30MPH (50 km/h)) 20' (6 m) C-C 30MPH (50 km/h) TO 45MPH (70 km/h) 30' (9 m) C-C (OVER 45MPH (70 km/h))
RAILROAD CROSSING	24 (600) TRANSVERSE LINES: "RR" IS 6' (1.8 m) LETTERS: 15 (400) LINE FOR "X"	SOLID	WHITE	SEE STATE STANDARD 780001 AREA OF: "R"=3.6 SQ. FT. (0.33 m <sup>2</sup> ) EACH "X"=54.0 SQ. FT. (5.0 m <sup>2</sup> )
SHOULDER DIAGONALS (REQUIRED FOR SHOULDERS ≥ 8')	12 (300) @ 45°	SOLID	WHITE - RIGHT YELLOW - LEFT	50' (15 m) C-C (LESS THAN 30MPH (50 km/h)) 75' (25 m) C-C 30 MPH (50 km/h) TO 45MPH (70 km/h) 150' (45 m) C-C (OVER 45MPH (70 km/h))
U TURN ARROW	SEE DETAIL	SOLID	WHITE	16.3 SF
2 ARROW COMBINATION LEFT AND U TURN	SEE DETAIL	SOLID	WHITE	30.4 SF

FOR FURTHER DETAILS ON PAVEMENT MARKING REFER TO STANDARD SPECIFICATIONS FOR ROAD AND BRIDGE CONSTRUCTION AND STATE STANDARD 780001.

All dimensions are in inches (millimeters) unless otherwise shown.

MODEL: TC-13 (Sheet)  
FILE NAME: c:\p\work\wv\robert.torchalski@illinois.gov\11917709\104026-shb-DistStd.sds.gpn

USER NAME = robert.torchalski	DESIGNED - EVERS	REVISED - C. JUCIUS 09-09-09
	DRAWN - C. JUCIUS 07-01-13	REVISED - C. JUCIUS 12-21-15
	CHECKED -	REVISED - C. JUCIUS 04-12-16
PLOT DATE = 2/24/2026	DATE - 03-19-90	

**STATE OF ILLINOIS  
DEPARTMENT OF TRANSPORTATION**

**DISTRICT ONE  
TYPICAL PAVEMENT MARKINGS**

SCALE: NONE	SHEET 1 OF 1 SHEETS	STA. TO STA.
-------------	---------------------	--------------

F.A.P R.T.E.	SECTION	COUNTY	TOTAL SHEETS	SHEET NO.
29	(29R-SF) BP 25	COOK	17	15
<b>TC-13</b>		CONTRACT NO. 80B51		
ILLINOIS FED. AID PROJECT				

MODEL: TC-21 (Sheet)  
 FILE NAME: c:\pwworking\robert.torchalski@illinois.gov\d11817091D104026-shh-DistStd.sds.dgn

**ROUTE MARKERS**

FOR U.S. ROUTES  
M1-40-2424

FOR ILLINOIS ROUTES  
M1-50-2424

**MAIN STREET**  
 R.R. UNMARKED ROUTES  
 SPECIAL 24" x 18" VARIABLE  
 4" BLACK LETTERS ON WHITE  
 REFLECTIVE BACKGROUND

**ARROWS SIGNS**

M5-1L-2115

M5-1R-2115

M6-1-2115

M6-1-2115

M6-3-2115

**CARDINAL DIRECTION & DETOUR SIGNS**

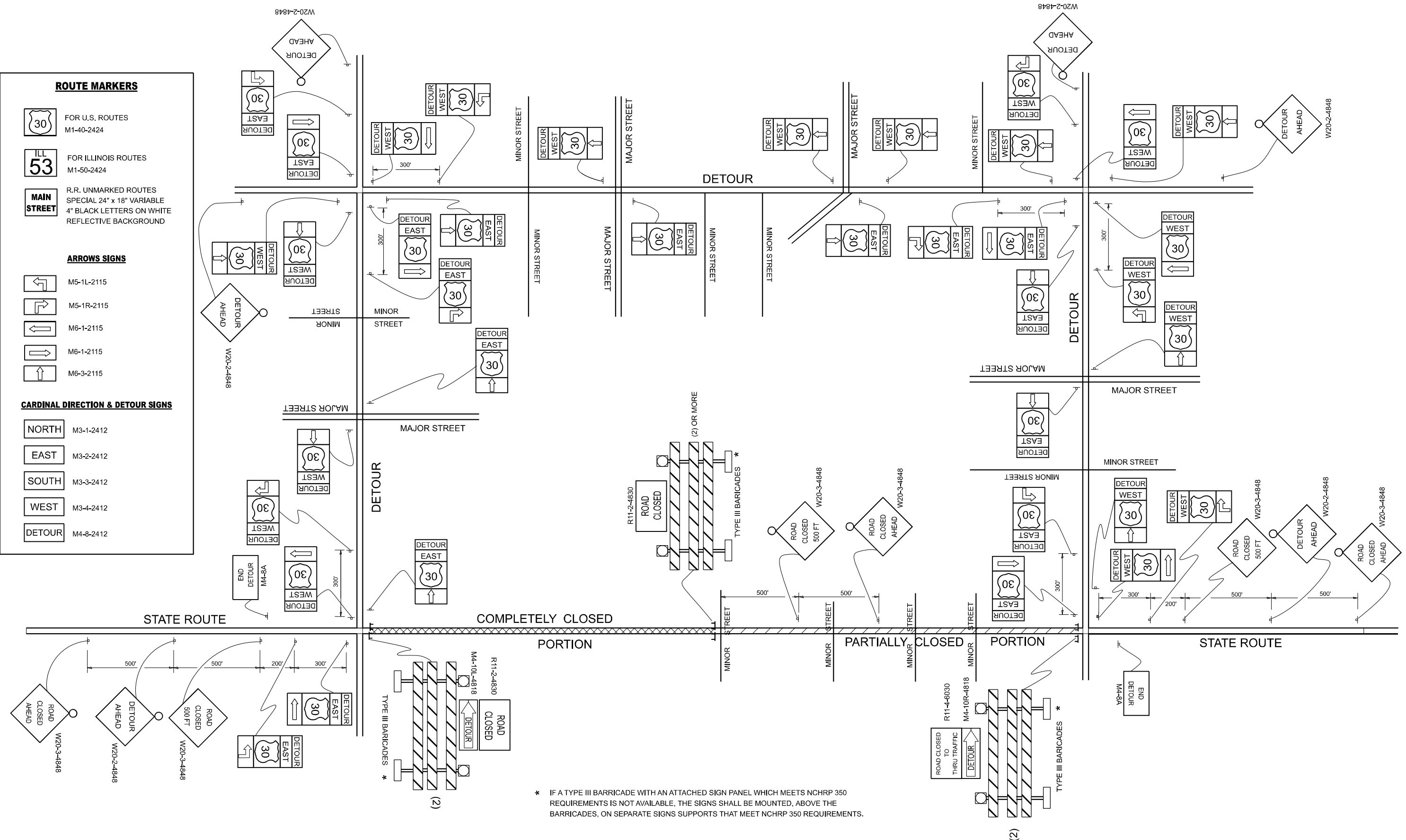
**NORTH** M3-1-2412

**EAST** M3-2-2412

**SOUTH** M3-3-2412

**WEST** M3-4-2412

**DETOUR** M4-8-2412



\* IF A TYPE III BARRICADE WITH AN ATTACHED SIGN PANEL WHICH MEETS NCHRP 350 REQUIREMENTS IS NOT AVAILABLE, THE SIGNS SHALL BE MOUNTED ABOVE THE BARRICADES, ON SEPARATE SIGNS SUPPORTS THAT MEET NCHRP 350 REQUIREMENTS.

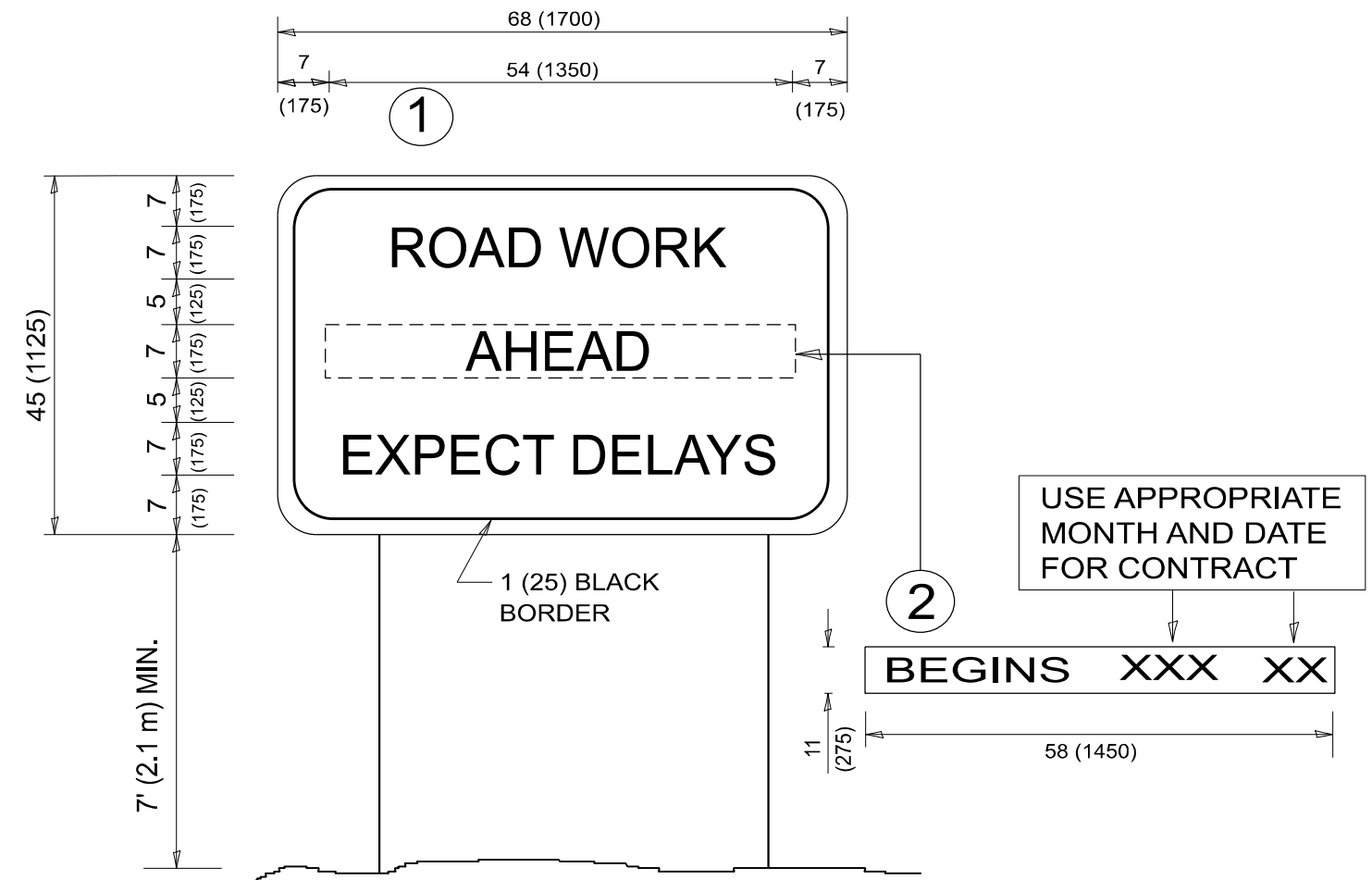
USER NAME = robert.torchalski	DESIGNED -	REVISED - 10-18-02
	DRAWN -	REVISED - R. BORO 09-14-09
	CHECKED -	REVISED -
PLOT DATE = 2/24/2026	DATE -	REVISED -

**STATE OF ILLINOIS  
 DEPARTMENT OF TRANSPORTATION**

**DETOUR SIGNING  
 FOR CLOSING STATE HIGHWAYS**

SCALE: NONE SHEET 1 OF 1 SHEETS STA. TO STA.

F.A.P. RTE.	SECTION	COUNTY	TOTAL SHEETS	SHEET NO.
29	(29R-SF) BP 25	COOK	17	16
<b>TC-21</b>		CONTRACT NO. 80B51		
ILLINOIS FED. AID PROJECT				



**NOTES:**

1. USE BLACK LETTERING ON ORANGE BACKGROUND.
2. ERECT SIGNS IN ADVANCE OF THE LOCATION FOR THE "ROAD CONSTRUCTION AHEAD" SIGN AT LOCATIONS AS DIRECTED BY THE ENGINEER.
3. ERECT SIGN ① WITH INSTALLED PANEL ② ONE WEEK PRIOR TO THE START OF CONSTRUCTION.
4. REMOVE PANEL ② SOON AFTER THE START OF CONSTRUCTION.
5. SEE SPECIAL PROVISION FOR "TEMPORARY INFORMATION SIGNING" FOR ADDITIONAL INFORMATION.
6. ONE SIGN ASSEMBLY EQUALS 25.70 SQ. FT. (2.3 SQ. M.)
7. SHALL BE PAID FOR AS TEMPORARY INFORMATION SIGNING.

ALL DIMENSIONS ARE IN INCHES (MILLIMETERS)  
UNLESS OTHERWISE SHOWN.

MODEL: TC-22 (Sheet)  
FILE NAME: c:\p\work\project\robert.torchalski@illinois.gov\1191709\104026-shh-DistSigs.dgn

USER NAME = robert.torchalski	DESIGNED -	REVISED - R. MIRS 09-15-97
	DRAWN -	REVISED - R. MIRS 12-11-97
	CHECKED -	REVISED - T. RAMMACHER 02-02-99
PLOT DATE = 2/24/2026	DATE -	REVISED - C. JUCIUS 01-31-07

**STATE OF ILLINOIS  
DEPARTMENT OF TRANSPORTATION**

**ARTERIAL ROAD  
INFORMATION SIGN**

SCALE: NONE SHEET 1 OF 1 SHEETS STA. TO STA.

F.A.P. RTE.	SECTION	COUNTY	TOTAL SHEETS	SHEET NO.
29	(29R-SF) BP 25	COOK	17	17
<b>TC-22</b>			CONTRACT NO. 80B51	
ILLINOIS FED. AID PROJECT				