

STATE OF ILLINOIS
DEPARTMENT OF TRANSPORTATION

F.A.I. RTE.	SECTION	COUNTY	TOTAL SHEETS	SHEET NO.
290A	(3233-211-VB) I 25	COOK	15	1
		ILLINOIS	CONTRACT NO. 80B66	

D-91-021-26

FOR INDEX OF SHEETS, SEE SHEET NO. 2

**PROPOSED
HIGHWAY PLANS**

**FAI ROUTE 290A: I-290 (EISENHOWER)
LOCATION 1: IL-43 OVER I-290, LOCATION 2: CIRCLE AVE. OVER I-290
LOCATION 3: CALIFORNIA AVE. OVER I-290
SECTION: (3233-211-VB) I 25
OVERHEAD PERMANENT PROTECTIVE SHIELDING
COOK COUNTY**

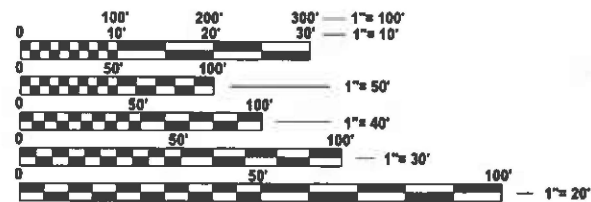
C-91-026-26



1) SN: 016-0311
IL-43 (HARLEM AVE.) OVER I-290
VILLAGE OF OAK PARK & FOREST PARK
I-290: 2024 AADT = 154,100
IL-43: SPEED LIMIT = 55 MPH

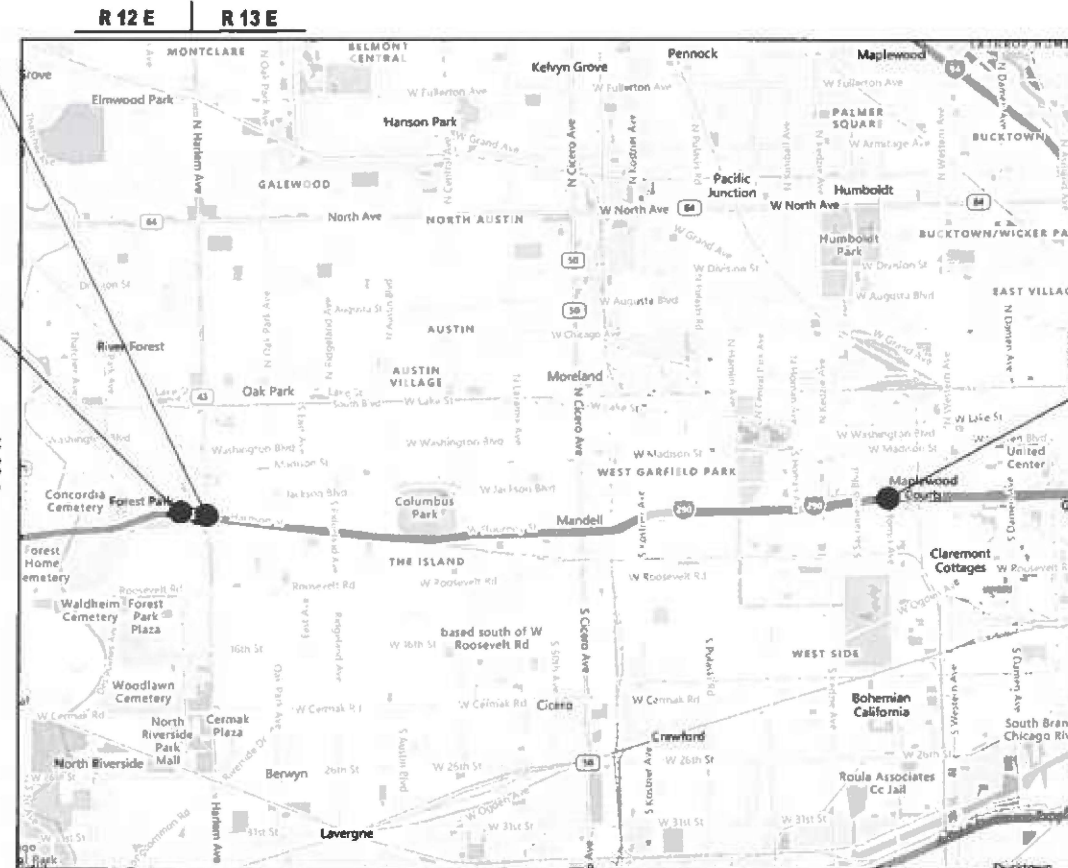
2) SN: 016-0995
CIRCLE AVE. OVER I-290
VILLAGE OF FOREST PARK
I-290: 2024 AADT = 154,100
I-290: SPEED LIMIT = 55 MPH

3) SN: 016-2076
CALIFORNIA AVE. OVER I-290
CITY OF CHICAGO
I-290: 2024 AADT = 195,500
I-290: SPEED LIMIT = 55 MPH



FULL SIZE PLANS HAVE BEEN PREPARED USING STANDARD ENGINEERING SCALES. REDUCED SIZED PLANS WILL NOT CONFORM TO STANDARD SCALES. IN MAKING MEASUREMENTS ON REDUCED PLANS, THE ABOVE SCALES MAY BE USED.

J.U.L.I.E.
JOINT UTILITY LOCATION INFORMATION FOR EXCAVATION
1-800-892-0123
OR 811



PROVISO TOWNSHIP | CITY OF CHICAGO

PROJECT ENGINEER: RODRIGO LEDEZMA (847)705-4580
PROJECT MANAGER: JEAN ALAIN MIDY (847)221-3056

CONTRACT NO. 80B66

STATE OF ILLINOIS
DEPARTMENT OF TRANSPORTATION

SUBMITTED March 19 2026
José Rios IR

REGIONAL ENGINEER

May 8 2026
[Signature]
ENGINEER OF DESIGN AND ENVIRONMENT

May 8 2026
[Signature]
DIRECTOR OF HIGHWAYS PROJECT IMPLEMENTATION

PRINTED BY THE AUTHORITY
OF THE STATE OF ILLINOIS

INDEX OF SHEETS

SHEET NO.	DESCRIPTION
1	COVER SHEET
2	INDEX OF SHEETS, STATE STANDARDS, AND GENERAL NOTES
3	SUMMARY OF QUANTITIES
4-5	LOCATION 1: BRIDGE DETAILS SN: 016-0311
6-7	LOCATION 2: BRIDGE DETAILS SN: 016-0995
8-10	LOCATION 3: BRIDGE DETAILS SN: 016-2076
11	FREEWAY ENTRANCE AND EXIT RAMP CLOSURE DETAILS (TC-08)
12	TRAFFIC CONTROL DETAILS FOR FREEWAY SINGLE AND MULTI-LANE WEAVE (TC-09)
13	TRAFFIC CONTROL DETAILS FOR FREEWAY SHOULDER CLOSURE AND PARTIAL RAMP CLOSURES (TC-17)
14	ARTERIAL ROAD INFORMATION SIGN (TC-22)
15	PERMANENT PROTECTIVE SHIELD (BM-PPS-I)

STATE STANDARDS

STANDARD NO.	DESCRIPTION
000001-09	STANDARD SYMBOLS, ABBREVIATIONS, AND PATTERNS
701001-02	OFF ROAD OPERATIONS, 2L, 2W, MORE THAN 15' AWAY
701006-05	OFF ROAD OPERATIONS, 2L, 2W, 15' TO 24" FROM PAVEMENT EDGE
701101-05	OFF ROAD OPERATIONS, MUL TILANE, 15' TO 24" FROM PAVEMENT EDGE
701400-12	APPROACH TO LANE CLOSURE, FREEWAY/EXPRESSWAY
701401-13	LANE CLOSURE, FREEWAY/EXPRESSWAY
701411-09	LANE CLOSURE, MUL TILANE, AT ENTRANCE OR EXIT RAMP, FOR SPEEDS > 45 MPH
701428-01	TRAFFIC CONTROL SETUP AND REMOVAL FREEWAY/EXPRESSWAY
701446-11	TWO LANE CLOSURE, FREEWAY / EXPRESSWAY
701901-11	TRAFFIC CONTROL DEVICES

GENERAL NOTES

1. BEFORE STARTING ANY EXCAVATION, THE CONTRACTOR SHALL CALL "JULIE AT (800) 892-0123 OR 811 FOR FIELD LOCATIONS OF BURIED ELECTRIC, TELEPHONE AND GAS FACILITIES, (48 HOURS NOTIFICATION IS REQUIRED).
2. THE CONTRACTOR SHALL COORDINATE CONSTRUCTION ACTIVITIES WITH UTILITY COMPANIES, VILLAGE OF OAK PARK, FOREST PARK AND CITY OF CHICAGO IN COOK COUNTY.
3. THE CONTRACTOR WILL NOT BE ALLOWED TO SET UP A YARD OR FIELD OFFICE ON STATE PROPERTY WITHOUT WRITTEN PERMISSION FROM THE DEPARTMENT.
4. PLAN DIMENSIONS AND DETAILS RELATIVE TO EXISTING PLANS ARE SUBJECT TO NOMINAL CONSTRUCTION VARIATIONS. THE CONTRACTOR SHALL FIELD VERIFY EXISTING DIMENSIONS AND MAKE NECESSARY APPROVED ADJUSTMENTS PRIOR TO ORDERING OF MATERIALS. SUCH VARIATIONS SHALL NOT BE CAUSE FOR ADDITIONAL COMPENSATION FOR A CHANGE IN SCOPE OF THE WORK. HOWEVER, THE CONTRACTOR WILL BE PAID FOR THE QUANTITY ACTUALLY FURNISHED BASED AT THE UNIT PRICE BID FOR THE WORK.
5. THE CONTRACTOR SHALL CONTACT THE DISTRICT ONE TRAFFIC CONTROL SUPERVISOR AT: KALPANA.KANNAN-HOSADURGA@ILLINOIS.GOV FOR ARTERIALS, AND AT (847)705-4151 FOR EXPRESSWAYS A MINIMUM OF 72 HOURS IN ADVANCE OF BEGINNING WORK.
6. THESE PLANS HAVE BEEN PREPARED FROM NOTES RECEIVED FROM THE BUREAU OF MAINTENANCE BRIDGE INSPECTORS.
7. DO NOT SCALE PLANS FOR CONSTRUCTION DIMENSIONS.
8. THE CONTRACTOR SHALL BE REQUIRED TO PROVIDE ACCESS TO ABUTTING PROPERTY AT ALL TIMES DURING THE CONSTRUCTION OF THIS PROJECT.
9. WHEN ARTIFICIAL LIGHTING IS UTILIZED IN NIGHTTIME OPERATIONS, THE CONTRACTOR SHALL EXERCISE THE OUTMOST PRECAUTIONS PREVENTING ADVERSE VISIBILITY TO THE MOTORING PUBLIC AND ADJACENT RESIDENTIAL AREAS.
10. THE CONTRACTOR SHALL TAKE NECESSARY PRECAUTIONS TO INSURE THAT NO DEBRIS WILL ENDANGER OR INTERFERE WITH TRAFFIC ON THE ROADWAY OR THE RAILROAD BENEATH THE BRIDGE ACCORDING TO ARTICLE 107.09 OR 107.12 OF THE STANDARD SPECIFICATIONS. THIS WORK WILL NOT BE PAID FOR SEPARATELY, BUT SHALL BE INCLUDED IN THE CONTRACT UNIT PRICE FOR THE APPROPRIATE PAY ITEM INVOLVED AND NO ADDITIONAL COMPENSATION WILL BE ALLOWED.
11. WHERE UNDERPASS LIGHTING IS PRESENT ON A STRUCTURE, THE CONTRACTOR SHALL ADJUST THE PROTECTIVE SHIELDING TO RIDE ABOVE THE EXISTING LIGHTING FIXTURES IN ORDER TO MAINTAIN THE EXISTING LEVEL OF LIGHTING ON THE ROADWAY UNDERNEATH. DETAILS SHALL BE APPROVED BY THE ENGINEER BEFORE INSTALLATION. A CLEARANCE OF 1' 1/2" ± 1/4" AROUND THE FIXTURE SHALL BE PROVIDED FOR FUTURE MAINTENANCE.
12. PRIOR TO THE INSTALLATION OF THE PROTECTIVE SHIELDING, UNDER NO CIRCUMSTANCES SHALL THE PROTECTIVE SHIELDING REST ON TOP OF THE CONDUIT.
13. ANY WORK DONE BY THE CONTRACTOR ON THE UNDERPASS LIGHTING SYSTEM WILL REQUIRE A TRANSFER OF MAINTENANCE OF THE AFFECTED CIRCUITS TO THE CONTRACTOR. ALTERNATELY, THE CONTRACTOR CAN AVOID A MAINTENANCE TRANSFER BY HIRING THE DEPARTMENT'S ELECTRICAL MAINTENANCE CONTRACTOR (EMC) TO RELOCATE THE CONDUIT.
14. CONTRACTOR MUST COMPLETE THE WORK WITHOUT DISTURBING THE EXISTING LIGHTING AND SURVEILLANCE CONDUIT OR JUNCTION BOXES. IF INSTALLATIONS ARE DAMAGED IN THE PROCESS, THE CONTRACTOR SHALL REPAIR OR REPLACE THE EXISTING ELECTRICAL INSTALLATIONS IN COMPLIANCE WITH ELECTRICAL OR SURVEILLANCE CONSTRUCTION SPECIFICATIONS.
15. THE CONTRACTOR SHALL REQUEST AND GAIN THE APPROVAL FROM THE ILLINOIS DEPARTMENT OF TRANSPORTATION'S EXPRESSWAY TRAFFIC OPERATIONS ENGINEER AT www.idotllcs.com TWENTY FOUR (24) HOURS IN ADVANCE OF ALL DAILY LANE, RAMP AND SHOULDER CLOSURES AND 7 DAYS IN ADVANCE OF ALL PERMANENT AND WEEKEND CLOSURES ON ALL FREEWAYS AND/OR EXPRESSWAYS IN DISTRICT ONE.
16. CONTRACTOR WILL BE REQUIRED TO ATTEND THE TRAFFIC CONTROL COORDINATION MEETINGS EVERY THURSDAY AT 10:00 AM AT 3501 S. NORMAL AVE, CHICAGO TO PRESENT LANE CLOSURES BEFORE ANY WORK ON I-290 (EISENHOWER).
17. THE CONTRACTOR SHALL CONTACT THE DISTRICT ONE EXPRESSWAY TRAFFIC CONTROL SUPERVISOR CARLOS MUNOZ AT CARLOS.MUNOZ@ILLINOIS.GOV A MINIMUM OF 72 HOURS IN ADVANCE OF BEGINNING WORK.

MODEL: ConNotesSM01 (Sheet)
 FILE NAME: C:\pwworking\hassam\102125-sh-germole.gn

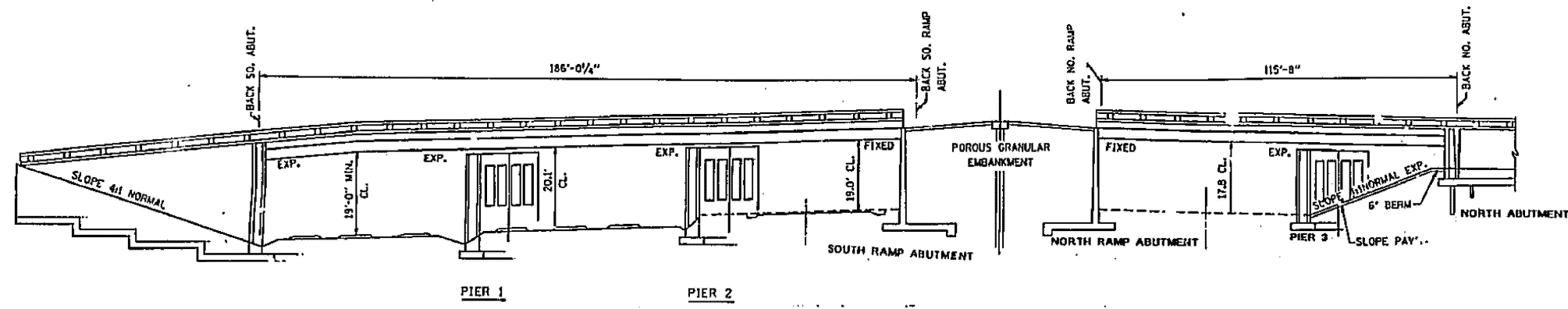
USER NAME = nave ed .h .ans	DESIGNED -	REVISED -
PLOT SCALE = 0.18888833 / in.	DRAWN -	REVISED -
PLOT DATE = 3/19/2026	CHECKED -	REVISED -
	DATE -	REvised -

**STATE OF ILLINOIS
DEPARTMENT OF TRANSPORTATION**

INDEX OF SHEETS, STATE STANDARDS AND GENERAL NOTES

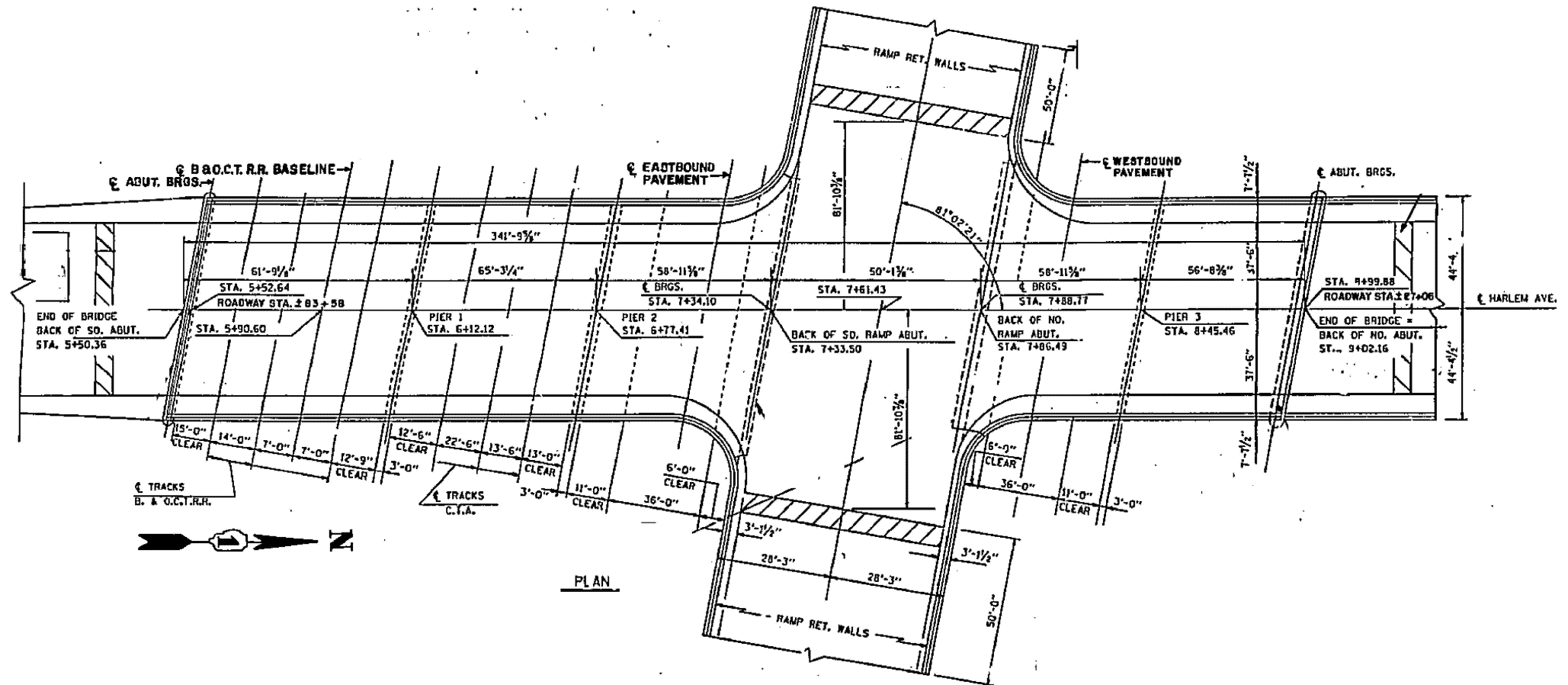
SCALE SHEET OF 1 SHEETS SA TOTAL

F.A.I. RTE.	SECTION	COUNTY	TOTAL SHEETS	SHEET NO.
290A	(3233-21-VB) I 25	COOK	15	2
CONTRACT NO. 80B66				
ILLINOIS FED. AID PROJECT				

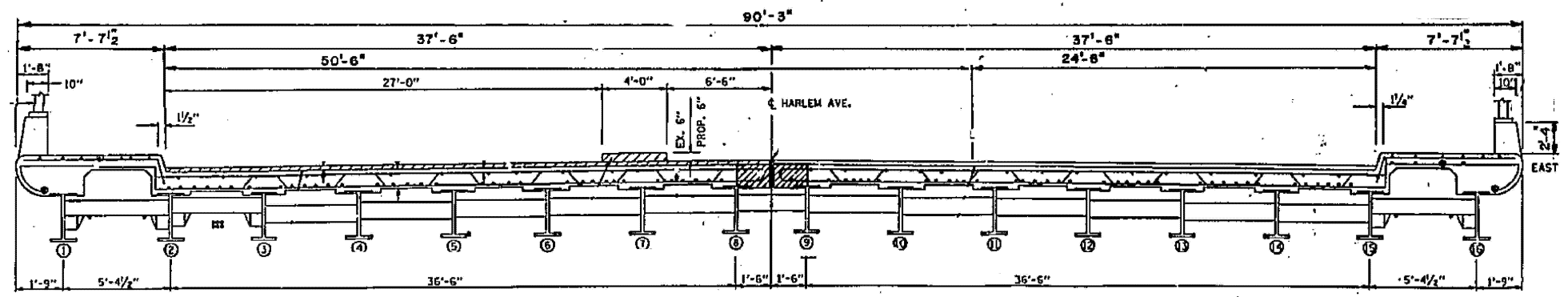


ELEVATION

FOR INFORMATION ONLY



PLAN



CROSS SECTION

MODEL: Plan (Sheet)
FILE NAME: c:\pwwork\work\hassan\1197885D\102126-sht-plan.dgn

USER NAME = naveed.hassan	DESIGNED -	REVISED -
	DRAWN -	REVISED -
	CHECKED -	REVISED -
PLOT DATE = 3/25/2026	DATE -	REVISED -

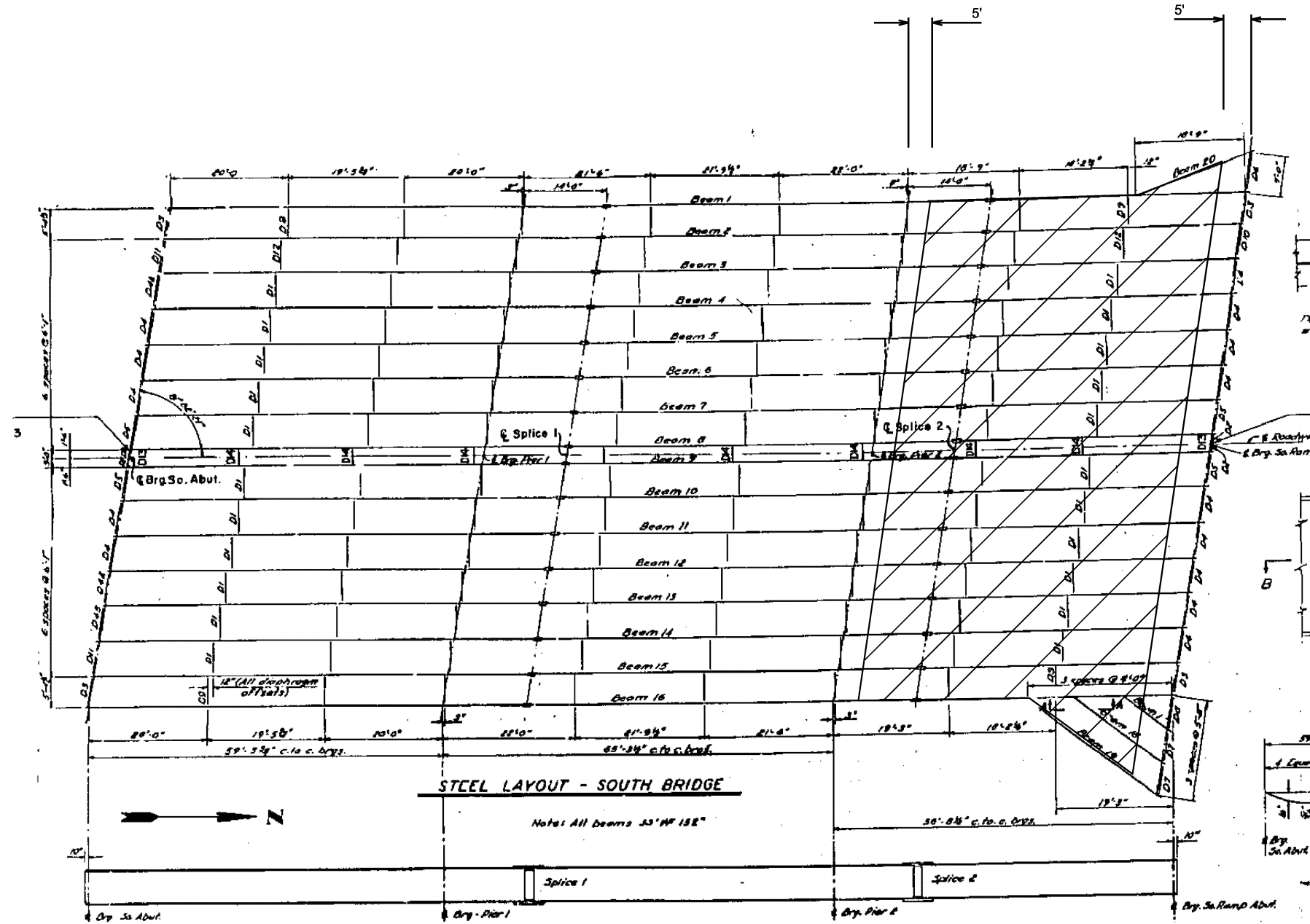
STATE OF ILLINOIS
DEPARTMENT OF TRANSPORTATION

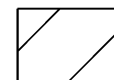
LOCATION 1 (SN 016-0311): IL-43 (HARLEM AVE.) OVER I-290
PLAN, ELEVATION AND CROSS SECTION

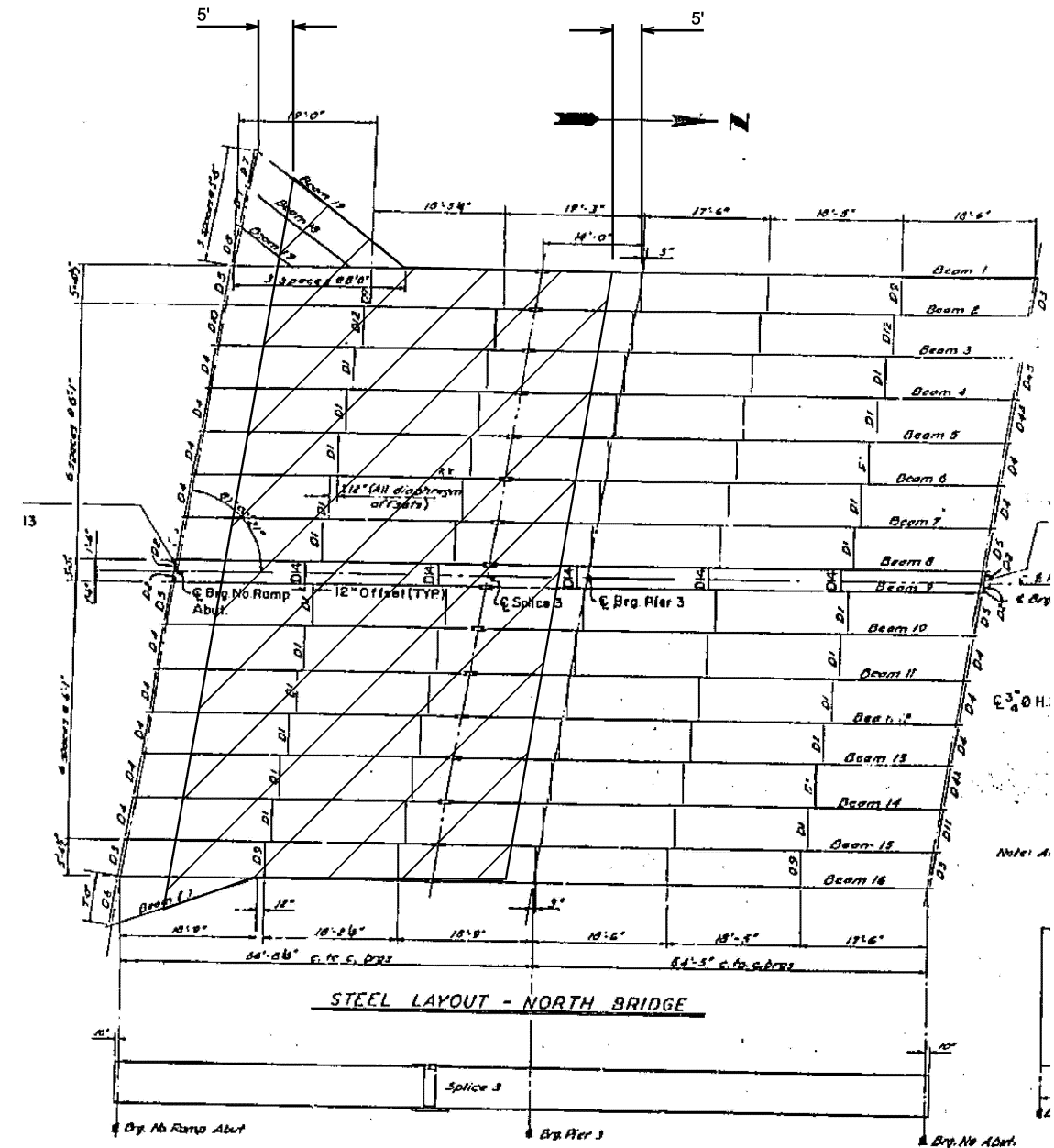
SCALE: SHEET 1 OF 2 SHEETS STA. TO STA.

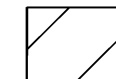
F.A.I. RTE.	SECTION	COUNTY	TOTAL SHEETS	SHEET NO.
290A	(3233-211-VB) 125	COOK	15	4
CONTRACT NO. 80B66				
ILLINOIS FED. AID PROJECT				

(3233-211-VB) 125




PERMANENT PROTECTIVE SHIELDING - 457 SQ YD
 SHIELD SPAN 3 (OVER EASTBOUND I-290)
 FROM FASCIA TO FASCIA AND 5' NORTH OF CENTER LINE
 OF PIER 2 TO 5' SOUTH OF SOUTH RAMP ABUTMENT




PERMANENT PROTECTIVE SHIELDING - 467 SQ YD
 SHIELD SPAN 4 (OVER WESTBOUND I-290)
 FROM FASCIA TO FASCIA AND 5' NORTH OF CENTER LINE
 OF NORTH RAMP ABUTMENT TO 5' SOUTH OF CENTER LINE OF PIER 3

MODEL: Framing (Sheet)
 FILE NAME: c:\p\work\kwh\hassan\1197885D\02126-sht-plan.dgn

USER NAME = naveed.hassan	DESIGNED -	REVISED -
	DRAWN -	REVISED -
	CHECKED -	REVISED -
PLOT DATE = 3/25/2026	DATE -	REVISED -

STATE OF ILLINOIS
DEPARTMENT OF TRANSPORTATION

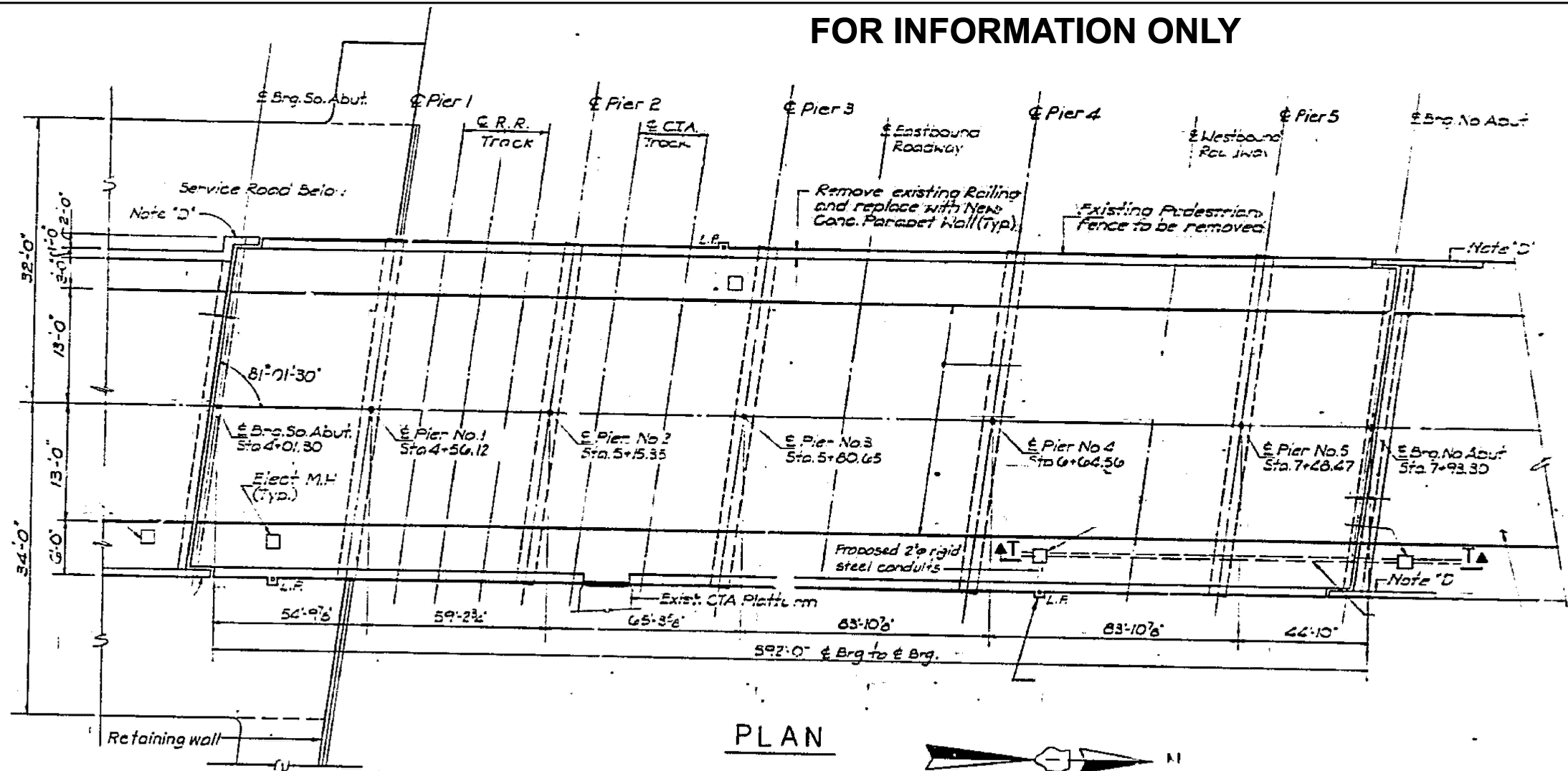
LOCATION 1 (SN 016-0311): IL-43 (HARLEM AVE.) OVER I-290
FRAMING DETAILS

SCALE: SHEET 2 OF 2 SHEETS STA. TO STA.

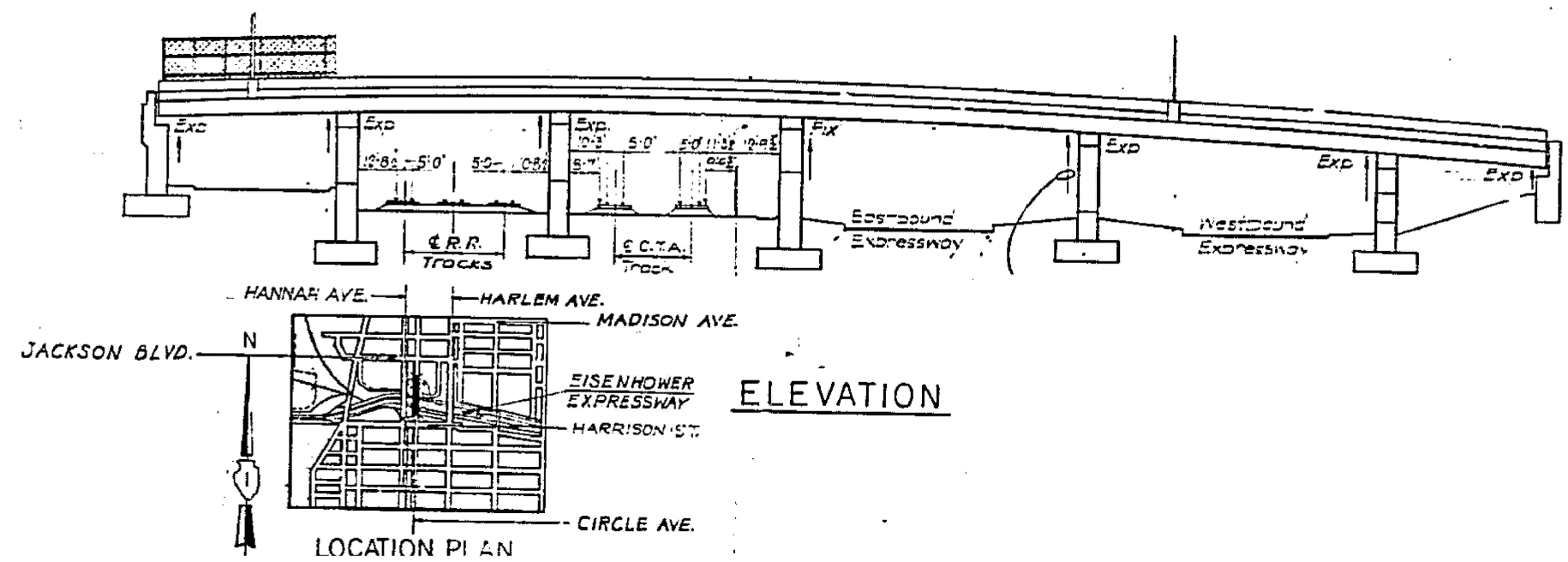
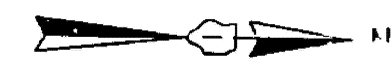
F.A.I. RTE.	SECTION	COUNTY	TOTAL SHEETS	SHEET NO.
290A	(3233-211-VB) 125	COOK	15	5
CONTRACT NO. 80B66				
ILLINOIS FED. AID PROJECT				

(3233-211-VB) 125

FOR INFORMATION ONLY



PLAN



ELEVATION

LOCATION PLAN

MODEL: Plan-1 (Sheet)
FILE NAME: c:\pwworking\hassanm1197685D\02126-sht-plan.dgn

USER NAME = naveed.hassan	DESIGNED -	REVISED -
	DRAWN -	REVISED -
	CHECKED -	REVISED -
PLOT DATE = 3/25/2026	DATE -	REVISED -

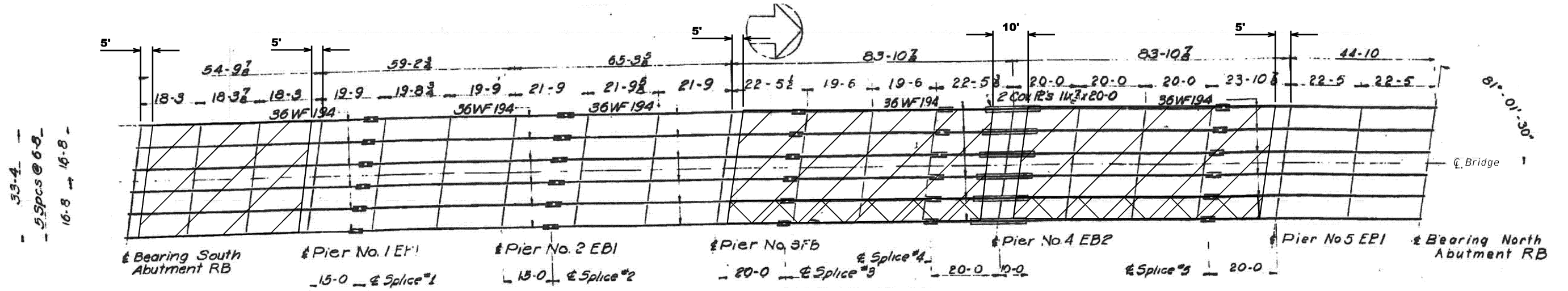
STATE OF ILLINOIS
DEPARTMENT OF TRANSPORTATION

LOCATION 2 (SN 016-0995): CIRCLE AVE. OVER I-290
PLAN & ELEVATION

SCALE: SHEET A001 OF 2 SHEETS STA. TO STA.

F.A.I. RTE.	SECTION	COUNTY	TOTAL SHEETS	SHEET NO.
290A	(3233-211-VB) 125	COOK	15	6
CONTRACT NO. 80B66				
ILLINOIS FED. AID PROJECT				

FOR INFORMATION ONLY



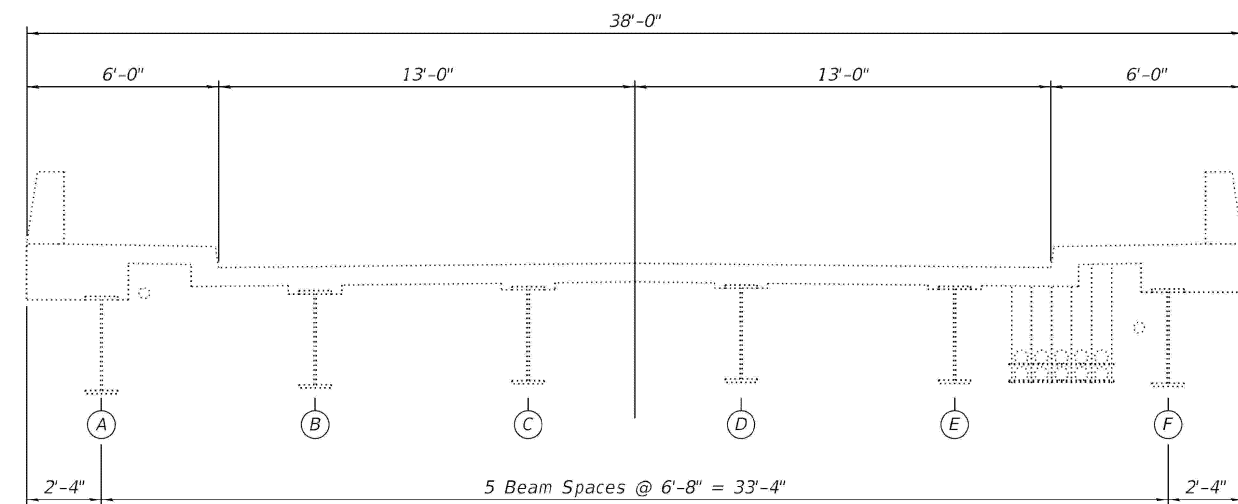
STRUCTURAL STEEL REPAIR LOCATION PLAN



REMOVAL OF EXISTING PROTECTIVE SHIELD - 109 SQ YD



PROTECTIVE SHIELD (PERMANENT) - 713 SQ YD
SHIELD FROM FASCIA TO FASCIA FROM 5' AWAY FROM PIER/ABUTMENT IN SPANS 1, 4, AND 5



EXISTING BRIDGE CROSS SECTION
Looking south

NOTES
1. CONTRACTOR SHALL REMOVE EXISTING PROTECTIVE SHIELD AND REPLACE IT WITH PROP. PROTECTIVE SHIELD (PERMANENT).

MODEL: Framing-1 (Sheet)
FILE NAME: c:\p\work\khalid\hassan\1197885D\02126-sht-plan.dgn

USER NAME = naveed.hassan	DESIGNED -	REVISED -
	DRAWN -	REVISED -
	CHECKED -	REVISED -
PLOT DATE = 3/25/2026	DATE -	REVISED -

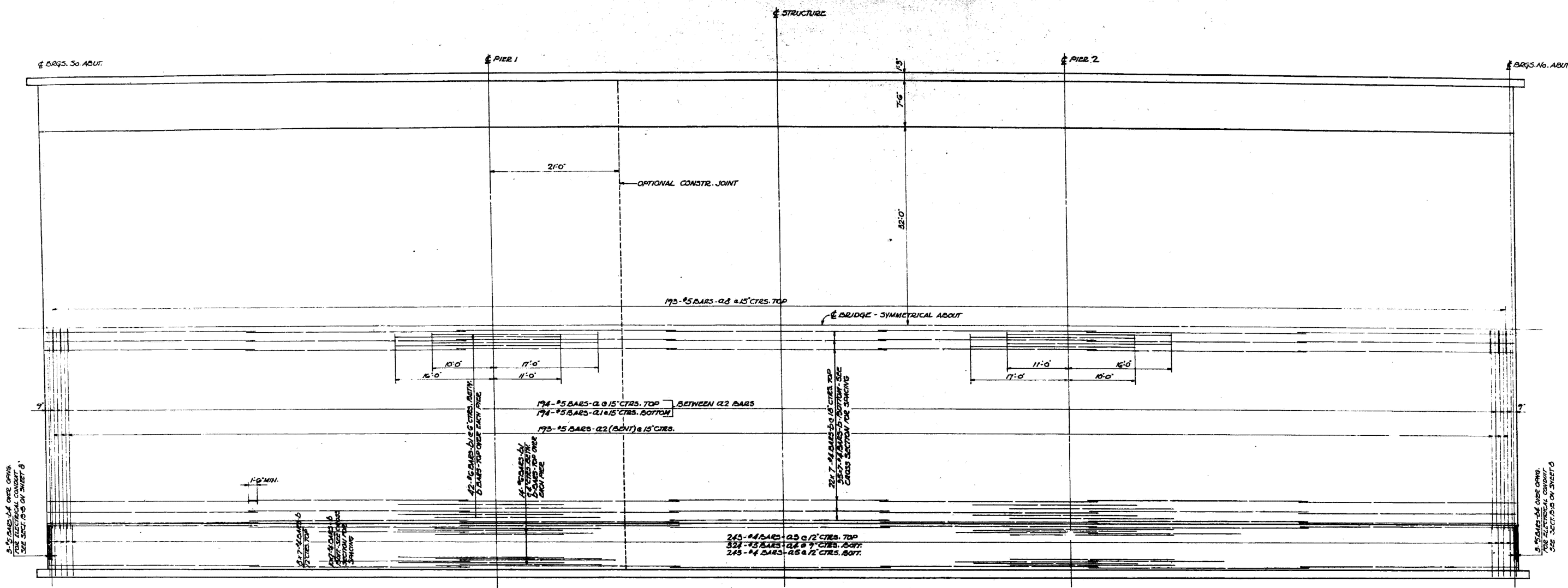
STATE OF ILLINOIS
DEPARTMENT OF TRANSPORTATION

LOCATION 2 (SN 016-0995): CIRCLE AVE. OVER I-290
FRAMING AND CROSS SECTION DETAILS

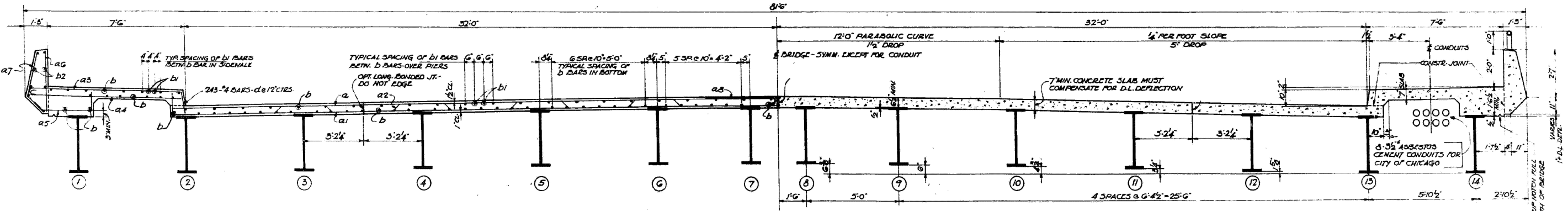
SCALE: SHEET A002 OF 2 SHEETS STA. TO STA.

F.A.I. RTE.	SECTION	COUNTY	TOTAL SHEETS	SHEET NO.
290A	(3233-211-VB) 125	COOK	15	7
CONTRACT NO. 80B66				
ILLINOIS FED. AID PROJECT				

FOR INFORMATION ONLY



PLAN
SCALE: 1/8" = 1'-0"



CROSS SECTION
SCALE: 1/8" = 1'-0"

MODEL: Cross section (Sheet)
FILE NAME: c:\pwworking\hassan\1197885D\102126-sht-plan.dgn

USER NAME = naveed.hassan	DESIGNED -	REVISED -
	DRAWN -	REVISED -
	CHECKED -	REVISED -
PLOT DATE = 3/25/2026	DATE -	REVISED -

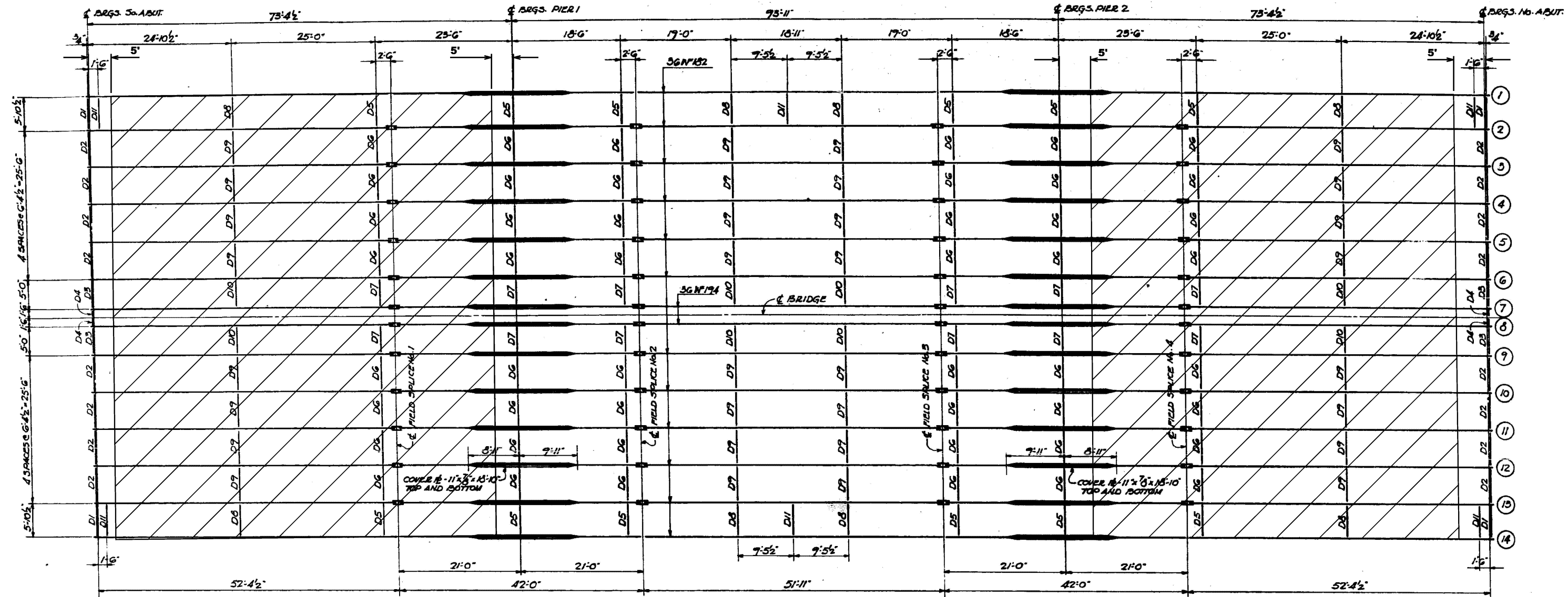
STATE OF ILLINOIS
DEPARTMENT OF TRANSPORTATION

LOCATION 3 (SN 016-2076); CALIFORNIA AVE. OVER I-290
CROSS SECTIONS DETAILS

SCALE: SHEET A002 OF 3 SHEETS STA. TO STA.

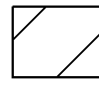
F.A.I. RTE.	SECTION	COUNTY	TOTAL SHEETS	SHEET NO.
290A	(3233-211-VB) 125	COOK	15	9
CONTRACT NO. 80B66				

ILLINOIS FED. AID PROJECT
(3233-211-VB) 125



PLAN OF STRUCTURAL STEEL
 SCALE: 3/32" = 1'-0"



 PROTECTIVE SHIELD (PERMANENT) - 1100 SQ YD
 SHIELD FROM FASCIA TO FASCIA FROM 5' AWAY
 FROM PIER/ABUTMENT.

MODEL: Framing-2 (Sheet)
 FILE NAME: c:\pwworking\hassan\1197885D\02126-sht-plan.dgn

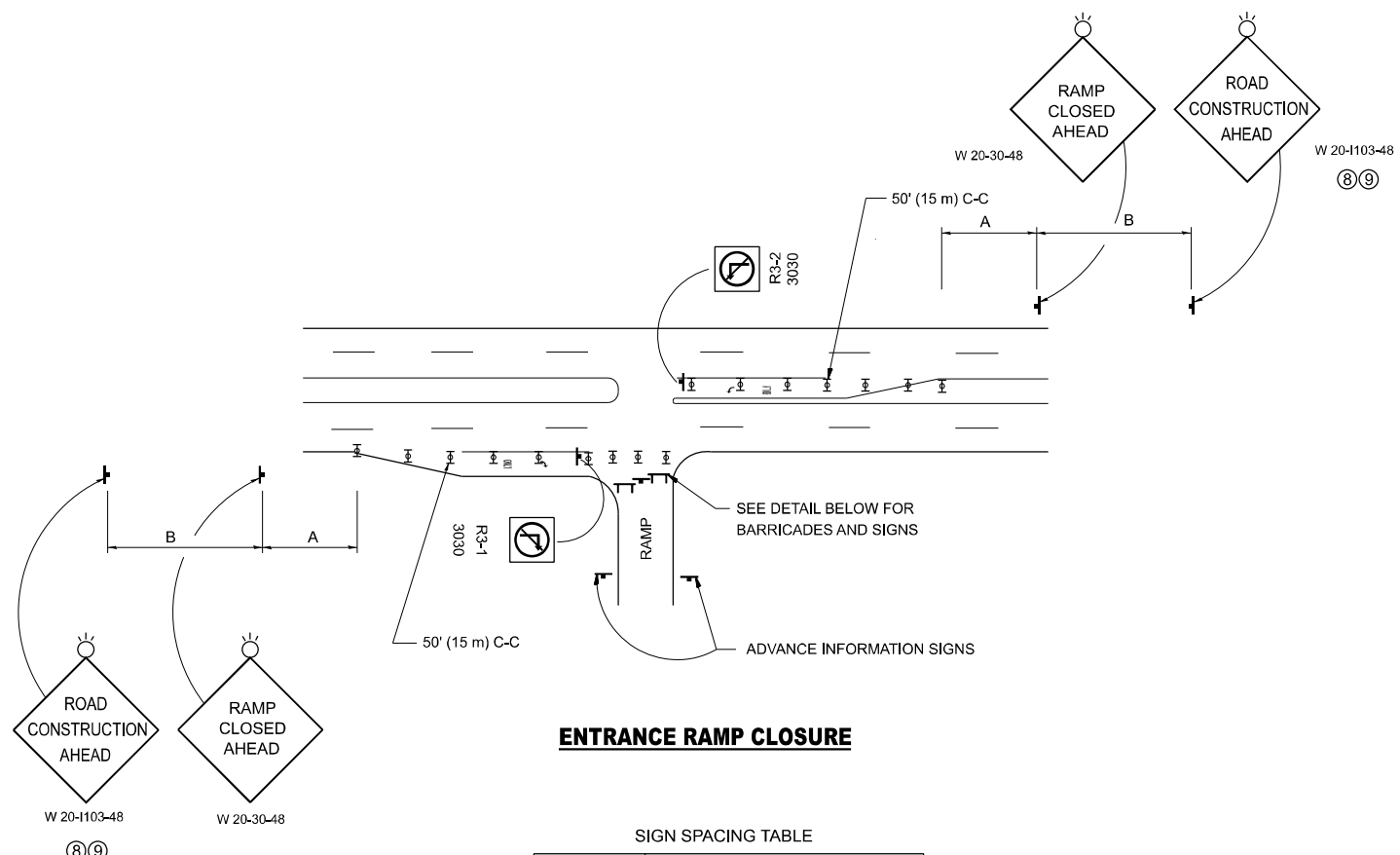
USER NAME = naveed.hassan	DESIGNED -	REVISED -
	DRAWN -	REVISED -
	CHECKED -	REVISED -
PLOT DATE = 3/3/2026	DATE -	REVISED -

STATE OF ILLINOIS
DEPARTMENT OF TRANSPORTATION

LOCATION 3 (SN 016-2076); CALIFORNIA AVE. OVER I-290
FRAMING DETAILS

SCALE: SHEET A003 OF 3 SHEETS STA. TO STA.

F.A.I. RTE. 290A	SECTION (3233-211-VB) 125	COUNTY COOK	TOTAL SHEETS 15	SHEET NO. 10
CONTRACT NO. 80B66				
ILLINOIS FED. AID PROJECT (3233-211-VB) 125				

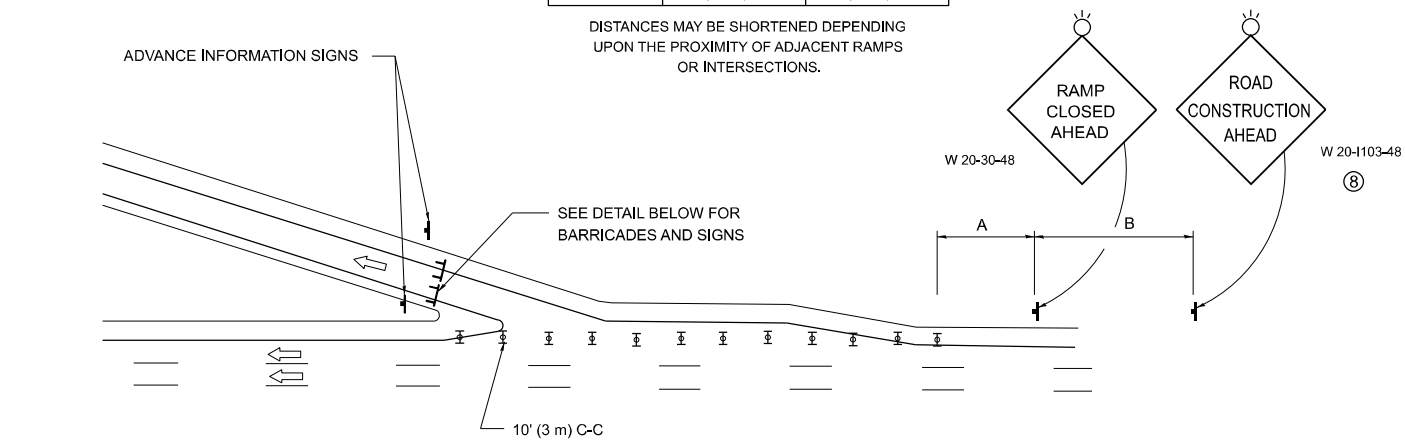


ENTRANCE RAMP CLOSURE

SIGN SPACING TABLE

FACILITY	DISTANCE BETWEEN SIGNS	
	A	B
EXPRESSWAY >24 HOURS	1000' (300 m)	1500' (450 m)
EXPRESSWAY ≤24 HOURS	500' (150 m)	500' (150 m)
ARTERIAL 55 MPH	500' (150 m)	500' (150 m)
ARTERIAL 50-45 MPH	350' (100 m)	350' (100 m)
ARTERIAL <45 MPH	200' (60 m)	200' (60 m)

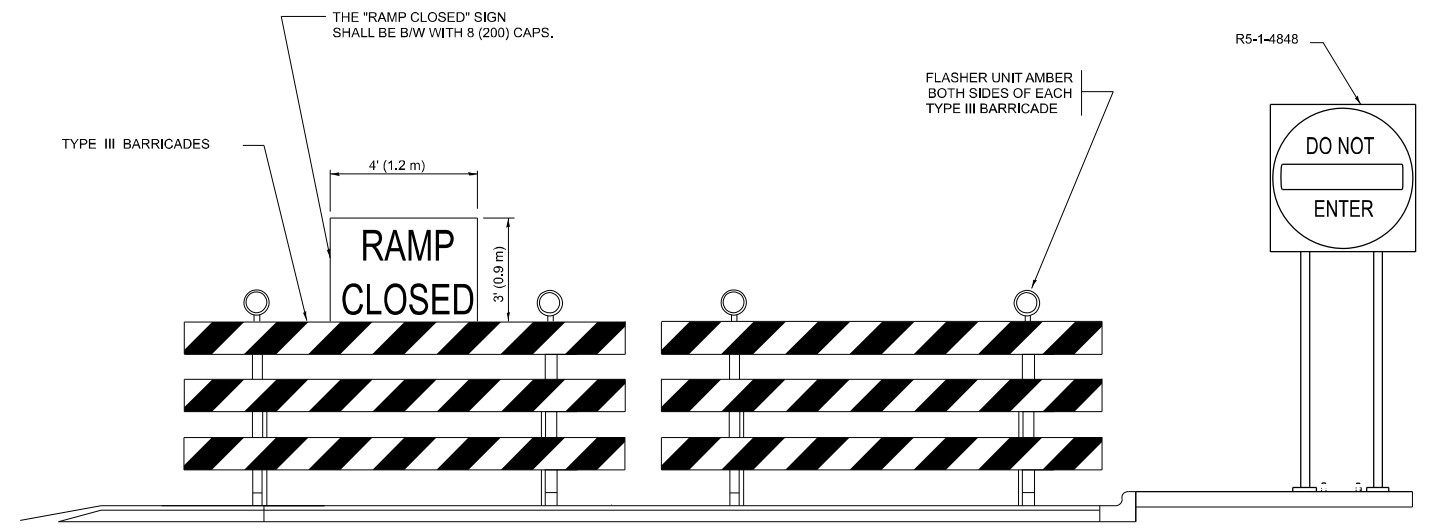
DISTANCES MAY BE SHORTENED DEPENDING UPON THE PROXIMITY OF ADJACENT RAMPS OR INTERSECTIONS.



EXIT RAMP CLOSURE

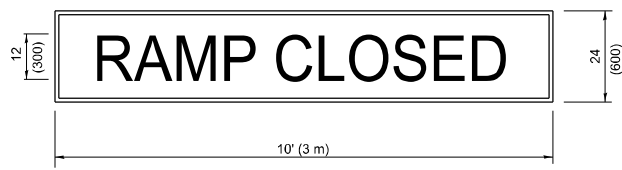
SYMBOLS

- ▬ TYPE II BARRICADE OR DRUM
- ▬ TYPE III BARRICADE WITH 2 FLASHING LIGHTS



DETAIL FOR REQUIRED BARRICADES & SIGNS

RAMP CLOSURE ADVANCE WARNING SIGN

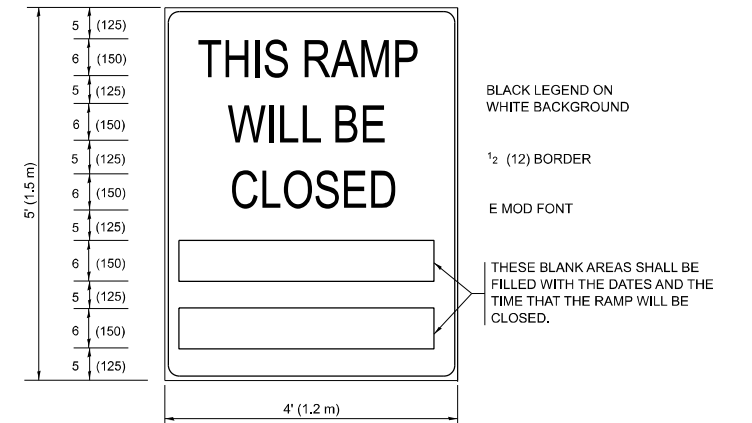


BLACK LEGEND ON ORANGE BACKGROUND MOUNTED DIAGONALLY
E MOD FONT
1 (25) BORDER

THESE SIGNS ARE REQUIRED ON ALL THE EXIT GUIDE SIGNS FOR EXIT RAMPS THAT WILL BE CLOSED FOR MORE THAN FOUR (4) CONSECUTIVE DAYS.

THESE SIGNS ARE REQUIRED ON BOTH SIDES OF THE RAMP, MINIMUM OF 1 WEEK IN ADVANCE OF THE CLOSURE.
THESE SIGNS SHALL BE FABRICATED AND PAID FOR ACCORDING TO THE TEMPORARY INFORMATION SIGNING SPECIAL PROVISION

RAMP CLOSURE ADVANCE INFORMATION SIGN



GENERAL NOTES:

- 1 CONES MAY BE SUBSTITUTED FOR DRUMS OR TYPE II BARRICADES DURING DAY OPERATIONS. CONES SHALL BE A MINIMUM OF 28 (700) HIGH.
- 2 VERTICAL BARRICADES SHALL NOT BE USED FOR RAMP CLOSURES.
- 3 A FLAGGER SHALL BE POSITIONED AT EACH CLOSED RAMP THAT IS OPEN TO CONSTRUCTION VEHICLES, PRECEDED BY A W20-7 FLAGGER WARNING SIGN.
- 4 ALL ROUTE MARKERS AND TRAILBLAZER ASSEMBLIES WHICH DIRECT MOTORISTS TO A CLOSED ENTRANCE RAMP SHALL BE COVERED WHEN THE RAMP IS CLOSED FOR MORE THAN FOUR (4) DAYS.
- 5 THE SIGNING AND BARRICADING WHICH IS REQUIRED BY THIS DETAIL SHALL BE INCLUDED IN THE COST OF TRAFFIC CONTROL AND PROTECTION (EXPRESSWAYS).
- 6 AUTHORIZATION FROM THE DISTRICT'S BUREAU OF TRAFFIC IS REQUIRED FOR ALL RAMP CLOSURES.
- 7 THE RAMP CLOSURE ADVANCE INFORMATION SIGNS SHALL BE ERECTED IF THE CLOSURE TIME EXCEEDS TWENTY-FOUR (24) HOURS. ADDITIONAL ADVANCE WARNING SIGNS ON EXIT GUIDE SIGNING WILL BE REQUIRED FOR EXIT RAMP CLOSURES THAT EXCEED FOUR (4) DAYS IN LENGTH
- 8 ROAD CONSTRUCTION AHEAD SIGNS MAY BE OMITTED WHEN THIS DETAIL IS USED IN CONJUNCTION WITH OTHER TRAFFIC CONTROL THAT ALREADY INCLUDES A ROAD CONSTRUCTION AHEAD SIGN.
- 9 ARTERIAL ROAD CONSTRUCTION AHEAD SIGNS SHALL BE INSTALLED ON THE LEFT SIDE OF TRAFFIC IF THE MEDIAN IS MORE THAN 10 FT WIDE.

ALL DIMENSIONS ARE IN INCHES (MILLIMETERS) UNLESS OTHERWISE SHOWN.

MODEL: TC08 (Sheet) FILE NAME: c:\p\work\hassan\1197885D\102126-srh-Dist\Stds.dgn

USER NAME = naveed.hassan	DESIGNED - D.W.S.	REVISED - S.P.B._12-09
	DRAWN - M.D._06-13	REVISED - M.D._06-13
	CHECKED -	REVISED - M.D._01-18
PLOT DATE = 3/25/2026	DATE - 02-83	REVISED - D.S._05-24

**STATE OF ILLINOIS
DEPARTMENT OF TRANSPORTATION**

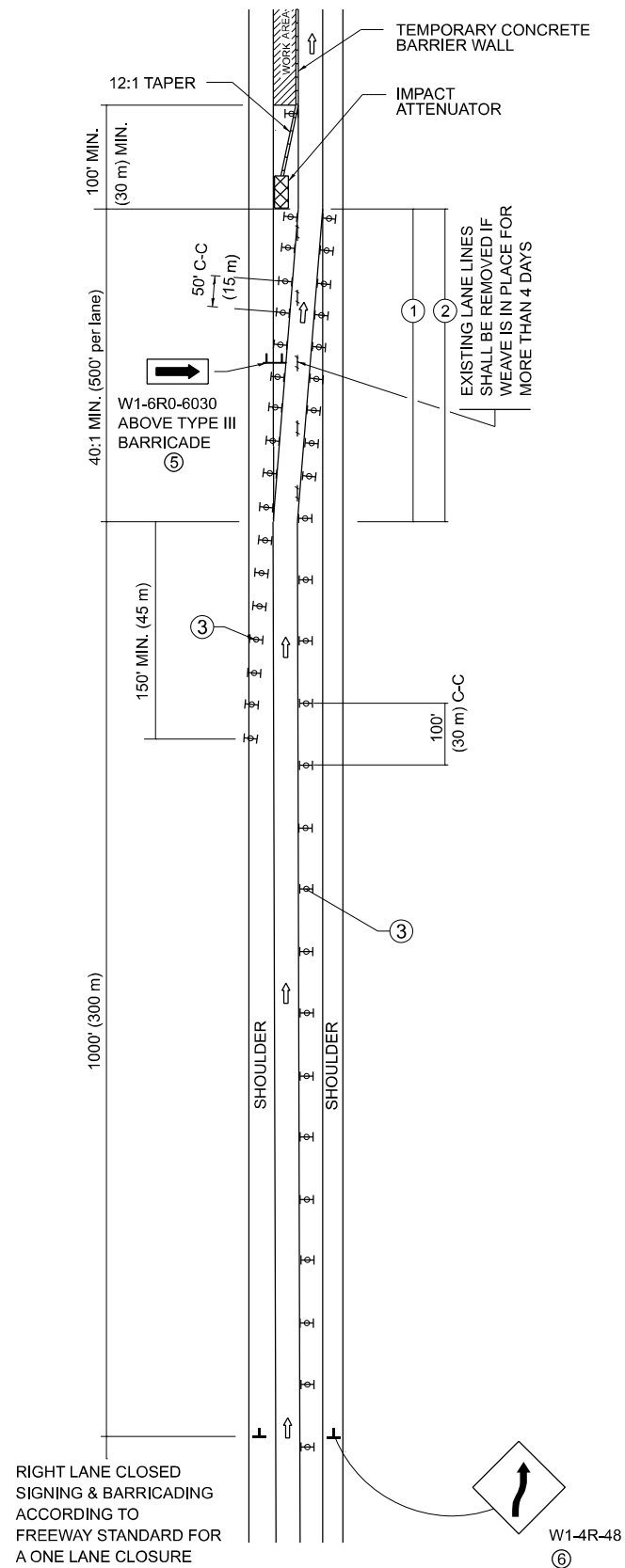
**ENTRANCE AND EXIT RAMP
CLOSURE DETAILS**

SCALE: NONE SHEET 1 OF 1 SHEETS STA. TO STA.

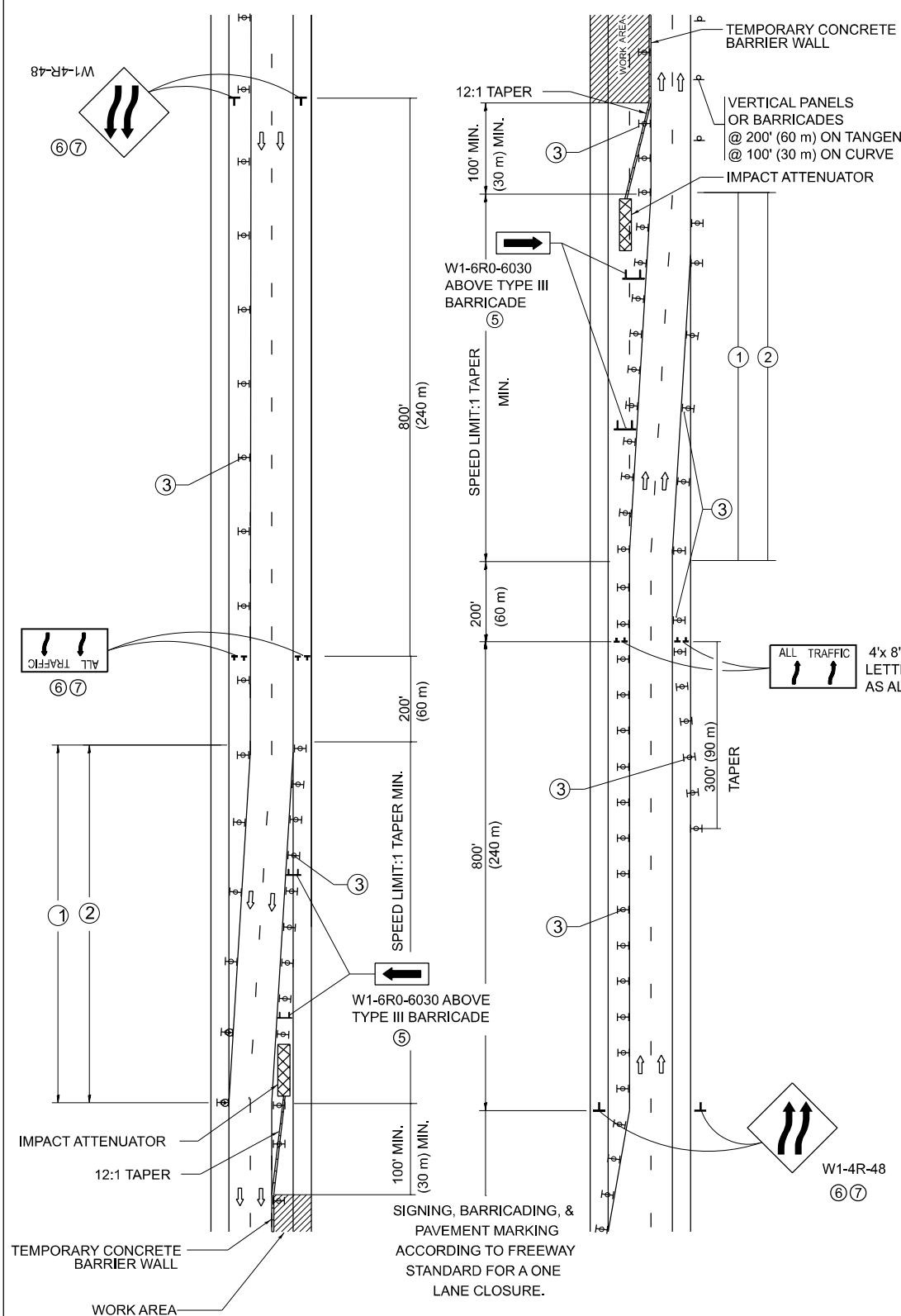
F.A.I RTE.	SECTION	COUNTY	TOTAL SHEETS	SHEET NO.
290A	(3233-211-VB) 125	COOK	15	11
TC-08			CONTRACT NO. 80B66	
ILLINOIS FED. AID PROJECT				

(3233-211-VB) 125

SINGLE LANE WEAVE



MULTI-LANE WEAVE



GENERAL NOTES:

- ① EXISTING CONFLICTING PAVEMENT MARKING LINES SHALL BE REMOVED. PAVEMENT MARKING REMOVAL SHALL NOT BE REQUIRED FOR SINGLE LANE WEAVES UNDER 4 DAYS IN DURATION.
- ② CONTINUOUS REFLECTIVE TEMPORARY PAVEMENT MARKING TAPE SHALL BE PLACED THROUGHOUT THE TAPER AND FOR 300' (90 m) ALONG SIDE THE WORK AREA WHERE THE CLOSURE TIME IS GREATER THAN FOURTEEN DAYS. THE LEFT EDGE LINE SHALL BE YELLOW AND THE RIGHT EDGE LINE SHALL BE WHITE. FOR MULTI-LANE WEAVES LANE LINES SHALL BE 5 INCH, 10'-30' (3 m-9 m) SKIP DASH, WHITE.
- ③ PLASTIC DRUMS WITH STEADY BURN LIGHTS AT 50' (15 m) C-C SPACING IN TAPERS AND 100' (30 m) C-C SPACING IN TANGENTS.
- ④ ALL SIGNS SHALL BE POST MOUNTED IF THE CLOSURE TIME EXCEEDS FOUR DAYS.
- ⑤ TYPE III BARRICADES MAY BE OMITTED FOR SINGLE-LANE WEAVES UNDER 24-HOURS IN DURATION. W1-6 SIGNS WILL STILL BE REQUIRED. IF THE WIDTH OF OFFSET IS LESS THAN 6' THEN THE TYPE III BARRICADE WITH ATTACHED ARROW SIGN PANEL CAN BE ELIMINATED IN THE TAPER AREAS.
- ⑥ WHEN THE LENGTH OF THE SHIFTED SEGMENT (DISTANCE BETWEEN WEAVE POINTS) IS LESS THAN 1500', DOUBLE REVERSE CURVE SIGNS (W24-1) SHOULD BE USED INSTEAD OF THE REVERSE CURVE (W1-4) SIGNS. ARROWS ON THE 4'X8' "ALL TRAFFIC" SIGNS SHALL BE THE SAME SHAPE.
- ⑦ THE NUMBER OF ARROWS ON THESE SIGNS SHALL MATCH THE NUMBER OF LANES OPEN TO TRAFFIC.

4'x 8' (1.2 m x 2.4 m); 1 (25) BORDER: 10 (25) CAPITAL LETTERS BACKGROUND SHEETING SHALL BE THE SAME AS ALL DIAMOND SHAPED CONSTRUCTION SIGNS.

SYMBOLS

- DIRECTION OF TRAFFIC
- WORK AREA
- SIGN ON PORTABLE OR PERMANENT SUPPORT
- TYPE II BARRICADE OR DRUM WITH MONO-DIRECTIONAL STEADY BURNING LIGHT
- TEMPORARY CONCRETE BARRIER WALL
- IMPACT ATTENUATOR
- W1-4R-48
- W24-1-48

ALL DIMENSIONS ARE IN INCHES (MILLIMETERS) UNLESS OTHERWISE SHOWN

MODEL: TC09 (Sheet)
FILE NAME: c:\p\work\hassan\1197885D\02126-shh-Dist\Sites.dgn

USER NAME = naveed,hassan	DESIGNED - D.W.S.	REVISED - J.A.F. 02-06
	DRAWN -	REVISED - S.P.B. 01-07
	CHECKED -	REVISED - S.P.B. 12-09
PLOT DATE = 3/25/2026	DATE - 02-87	REVISED - M.D. 06-13

STATE OF ILLINOIS
DEPARTMENT OF TRANSPORTATION

TRAFFIC CONTROL DETAILS FOR
FREEWAY SINGLE & MULTI-LANE WEAVE

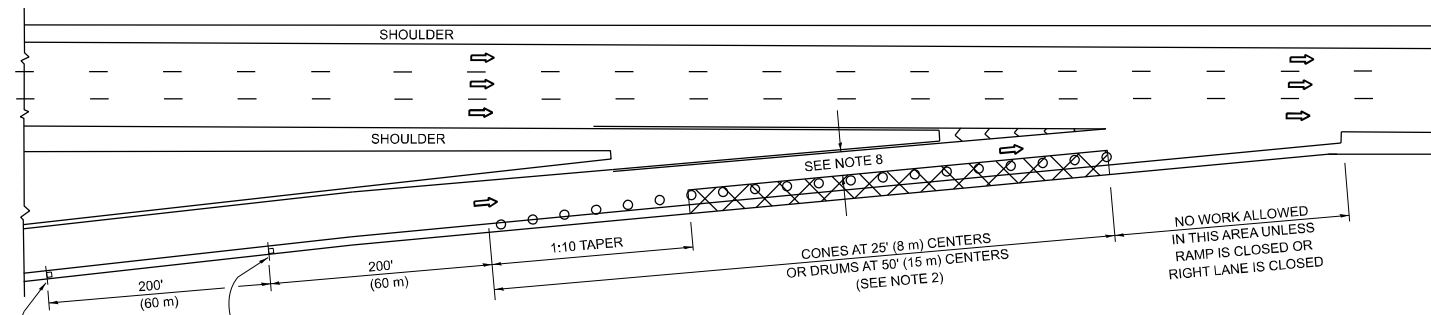
SCALE: NONE SHEET OF SHEETS STA. TO STA.

F.A.I RTE.	SECTION	COUNTY	TOTAL SHEETS	SHEET NO.
290A	(3233-211-VB) 125	COOK	15	12
TC-09		CONTRACT NO. 80B66		
ILLINOIS FED. AID PROJECT				

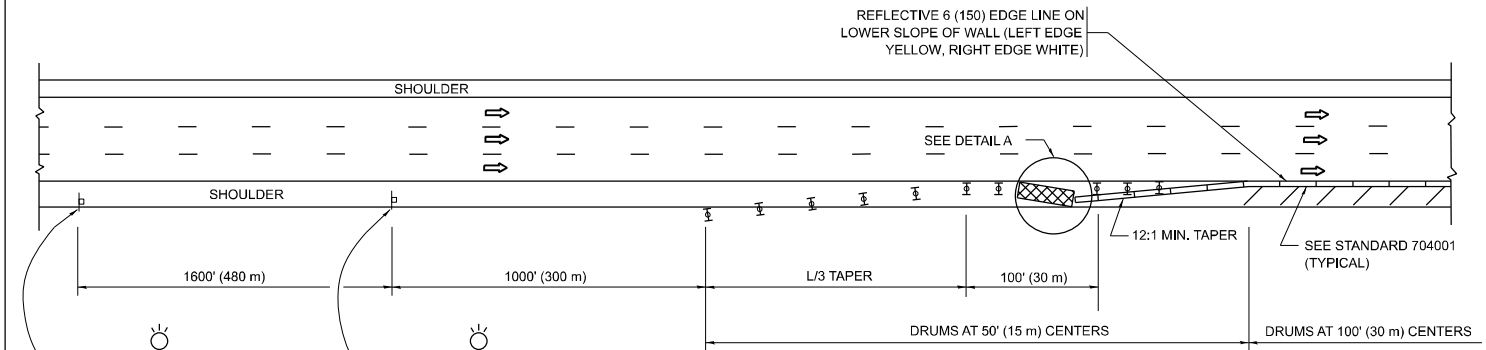
(3233-211-VB) 125

PARTIAL RAMP CLOSURE DETAILS

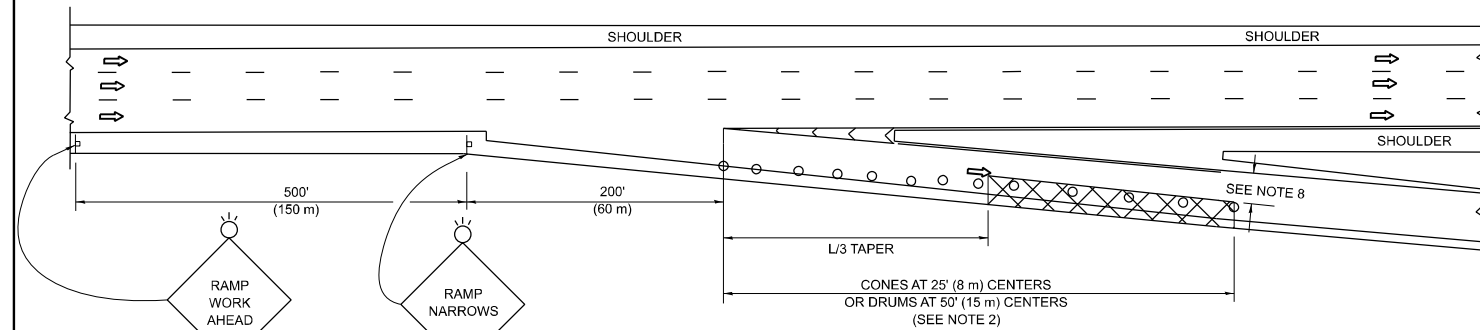
SHOULDER CLOSURE DETAILS



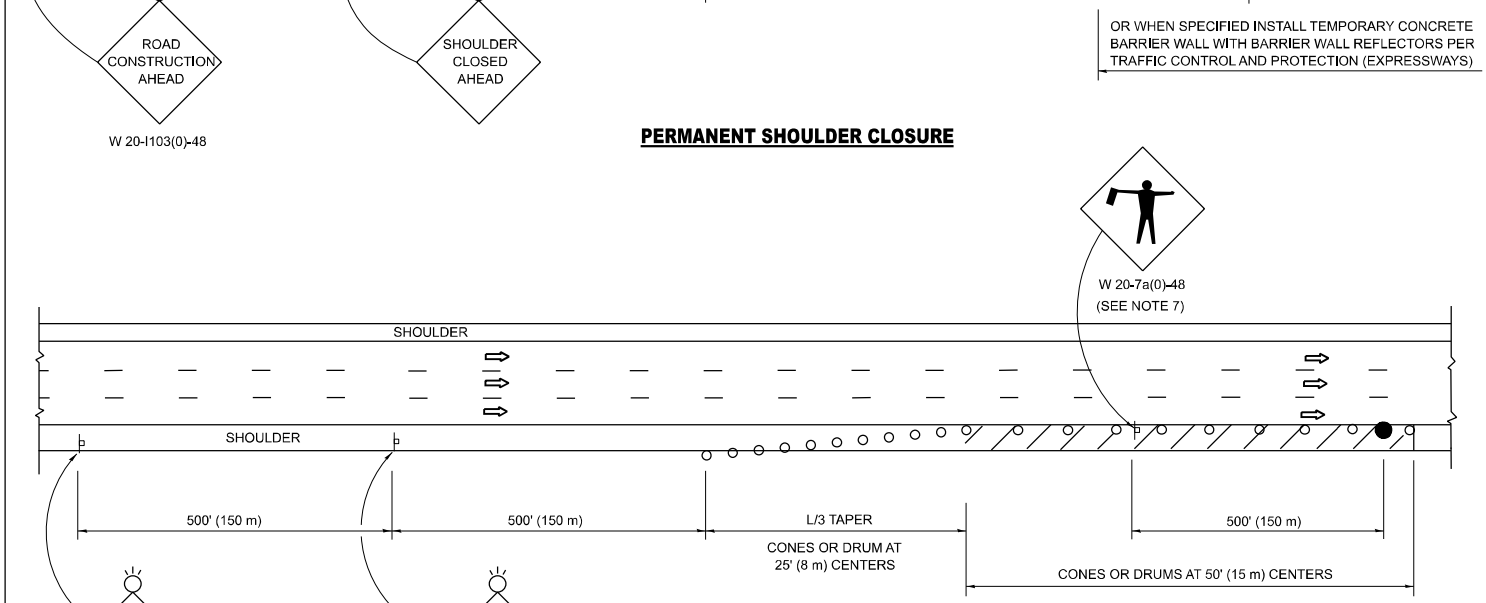
TYPICAL ENTRANCE RAMP



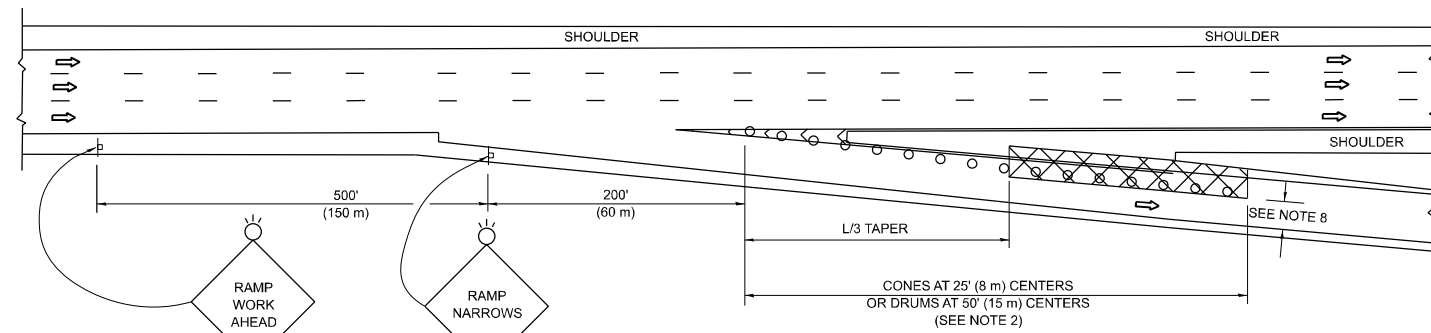
PERMANENT SHOULDER CLOSURE



TYPICAL EXIT RAMP



TEMPORARY SHOULDER CLOSURE



TYPICAL EXIT RAMP

SYMBOLS

- ACTIVE WORK AREA
- SIGN ON PORTABLE OR PERMANENT SUPPORT
- FLAGGER WITH CONTROL SIGN
- TYPE II BARRICADE OR DRUM
- CONE, DRUM OR BARRICADE
- IMPACT ATTENUATOR OF TYPE AND TEST LEVEL SPECIFIED

GENERAL NOTES:

1. THE "L" DISTANCE EQUALS:

SPEED LIMIT	METRIC	ENGLISH
45 mph (80 km/h)	$L=0,65(W)(S)$	$L=(W)(S)$

W = WIDTH OF OFFSET IN FEET (METERS)
 S = NORMAL POSTED SPEED MPH (KM/H)
2. TYPE II BARRICADES OR DRUMS ARE REQUIRED FOR ALL NIGHTTIME CLOSURES. TYPE II BARRICADES OR DRUMS WITH MONODIRECTIONAL STEADY BURN LIGHTS ARE REQUIRED FOR DELINEATING OBSTACLES, EXCAVATIONS, OR HAZARDS EXCEEDING 100 FT (30m) IN LENGTH AT NIGHT.
3. ALL SIGNS SHALL BE POST MOUNTED IF THE CLOSURE TIME EXCEEDS FOUR DAYS.
4. FLASHING LIGHTS SHALL BE USED DURING THE HOURS OF DARKNESS AND SHALL BE INSTALLED ABOVE THE FIRST TWO SETS OF SIGNS.

5. THE IMPACT ATTENUATOR, TEMPORARY IS NOT REQUIRED WHEN THE TEMPORARY CONCRETE BARRIER WALL IS PROTECTED BY OR IS TIED INTO THE EXISTING GUARDRAIL. IF OFFSET IS LESS THAN 5 FEET USE NARROW USE TYPE DEVICE TO MEET NCHRP350/MASH.
6. AUTHORIZATION FROM THE DISTRICT'S BUREAU OF TRAFFIC IS REQUIRED FOR ALL FREEWAY CLOSURES.
7. THE FLAGGER AND FLAGGER SIGN ARE REQUIRED AT THE ABOVE WORK SITES WHEN:
 - a. FOUR OR MORE WORK VEHICLES ENTER THE TRAFFIC LANES IN A ONE HOUR PERIOD.
 - b. THE WORK AVTIVITY REQUIRES FREQUENT ENCR OACHMENT INTO THE LANE OPEN TO TRAFFIC.
 THE FLAGGER SHALL BE STATIONED APPROXIMATELY 100' (30 m) TO 200' (60 m) IN ADVANCE OF THE WORKERS.

8. 12' MIN. WIDTH TANGENT SECTION
16' MIN. WIDTH CURVE SECTION.
9. TEMPORARY SHOULDER AND NON-SYSTEM INTERCHANGE PARTIAL RAMP CLOSURES ARE ALLOWED WEEKDAYS BETWEEN 9:00 A.M. AND 3:00 P.M. AND BETWEEN 7:00 P.M. AND 5:00 A.M. OR AS APPROVED BY THE EXPRESSWAY TRAFFIC OPERATIONS ENGINEER. PERMANENT SHOULDER AND PARTIAL RAMP CLOSURES WILL ONLY BE PERMITTED IF CALLED FOR IN THE PLANS OR AS APPROVED BY THE EXPRESSWAY OPERATIONS ENGINEER.



**DETAIL "A"
IMPACT ATTENUATOR, TEMPORARY
(SEE NOTE 5)**

ALL DIMENSIONS ARE IN INCHES (MILLIMETERS) UNLESS OTHERWISE SHOWN.

MODEL: TC17 (Sheet)
 FILE NAME: c:\p\work\hassan\1197885D\02126-shd-Dist\Stds.dgn

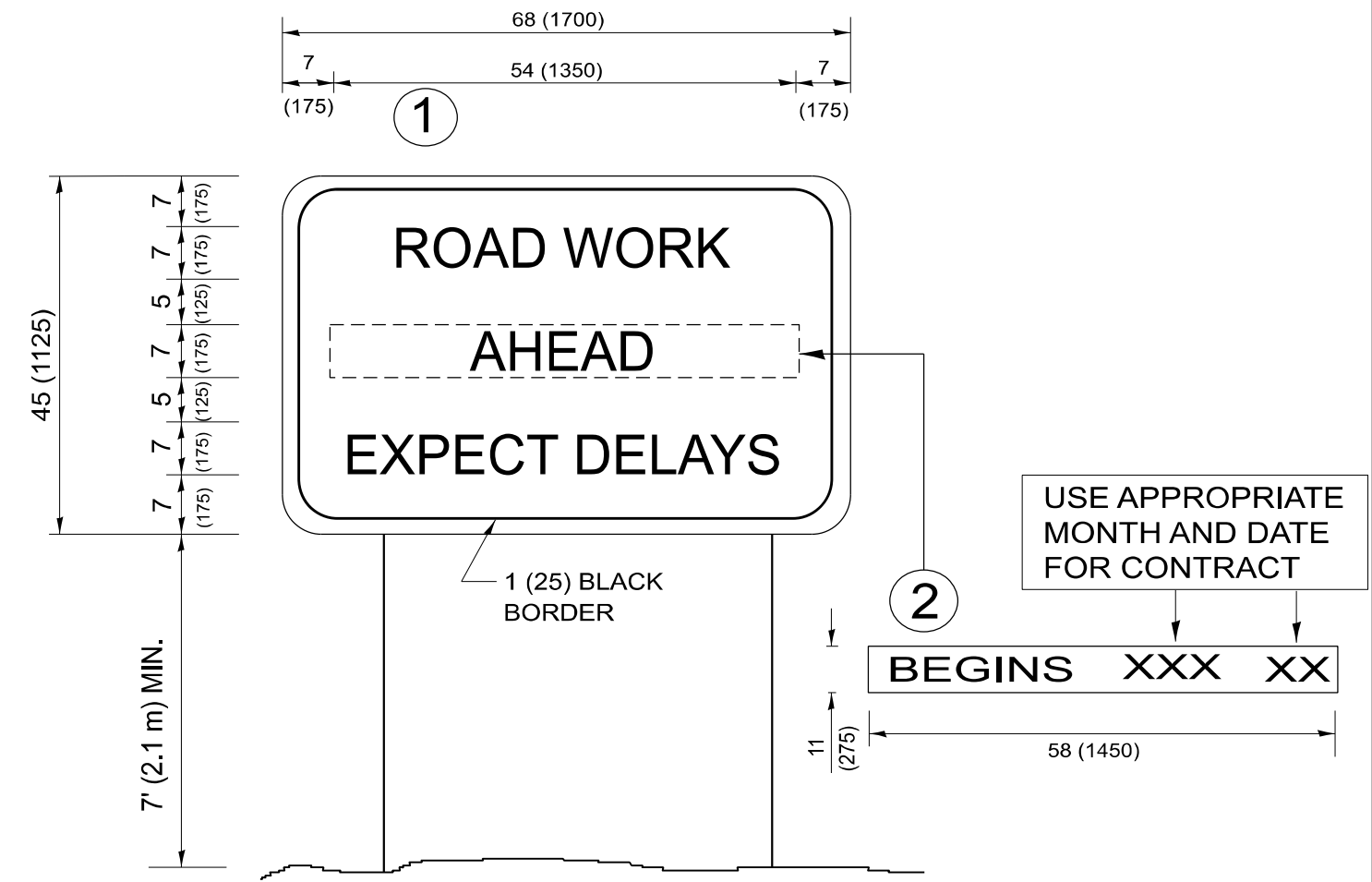
USER NAME = naveed,hassan	DESIGNED -	REVISED - M.D. 06-13
	DRAWN - D.W.S.	REVISED - M.D. 01-18
	CHECKED -	REVISED - M.D. 10-20
PLOT DATE = 2/3/2026	DATE - 11-96	REVISED - D.S. 05-24

**STATE OF ILLINOIS
DEPARTMENT OF TRANSPORTATION**

**TRAFFIC CONTROL DETAILS FOR FREEWAY
SHOULDER CLOSURES AND PARTIAL RAMP CLOSURES**

SCALE: NONE SHEET 1 OF 1 SHEETS STA. TO STA.

F.A.I RTE.	SECTION	COUNTY	TOTAL SHEETS	SHEET NO.
290A	(3233-211-VB) 125	COOK	15	13
TC-17			CONTRACT NO. 80B66	
ILLINOIS FED. AID PROJECT				



NOTES:

1. USE BLACK LETTERING ON ORANGE BACKGROUND.
2. ERECT SIGNS IN ADVANCE OF THE LOCATION FOR THE "ROAD CONSTRUCTION AHEAD" SIGN AT LOCATIONS AS DIRECTED BY THE ENGINEER.
3. ERECT SIGN ① WITH INSTALLED PANEL ② ONE WEEK PRIOR TO THE START OF CONSTRUCTION.
4. REMOVE PANEL ② SOON AFTER THE START OF CONSTRUCTION.
5. SEE SPECIAL PROVISION FOR "TEMPORARY INFORMATION SIGNING" FOR ADDITIONAL INFORMATION.
6. ONE SIGN ASSEMBLY EQUALS 25.70 SQ. FT. (2.3 SQ. M.)
7. SHALL BE PAID FOR AS TEMPORARY INFORMATION SIGNING.

ALL DIMENSIONS ARE IN INCHES (MILLIMETERS) UNLESS OTHERWISE SHOWN.

MODEL: TC22 (Sheet)
FILE NAME: c:\p\work\pavinfo\hassan\1197685\102126-sih-Dist\Dist.dgn

USER NAME = naveed,hassan	DESIGNED -	REVISED - R. MIRS 09-15-97
	DRAWN -	REVISED - R. MIRS 12-11-97
	CHECKED -	REVISED - T. RAMMACHER 02-02-99
PLOT DATE = 3/25/2026	DATE -	REVISED - C. JUCIUS 01-31-07

**STATE OF ILLINOIS
DEPARTMENT OF TRANSPORTATION**

**ARTERIAL ROAD
INFORMATION SIGN**

SCALE: NONE SHEET 1 OF 1 SHEETS STA. TO STA.

F.A.I RTE.	SECTION	COUNTY	TOTAL SHEETS	SHEET NO.
290A	(3233-211-VB) 125	COOK	15	14
TC-22			CONTRACT NO. 80B66	
ILLINOIS FED. AID PROJECT				

(3233-211-VB) 125

STATE OF ILLINOIS
DEPARTMENT OF TRANSPORTATION

Notes: See special provision for Permanent Protective Shield System.

Timber sizes shown are nominal sizes. Rough sawn timber of the dimensions shown will also be considered acceptable.

The minimum Fb and Fv values shown are the tabulated design values given in the National Design Specification for Wood Construction for No. 2 Southern Pine without adjustment factors applied. Better grades or other species with equal or higher allowable stresses will also be considered acceptable.

The timber spacings shown have been determined using allowable stresses with all adjustment factors necessary for the anticipated service conditions. All timber shall be treated.

Plywood shall be $\frac{5}{8}$ " rated Exterior type plywood by APA.

Plywood shall be placed such that the face grain is perpendicular to the timber supports. When less than a full sheet (4' width) of plywood is used, the width of the strip used shall not be less than 2'.

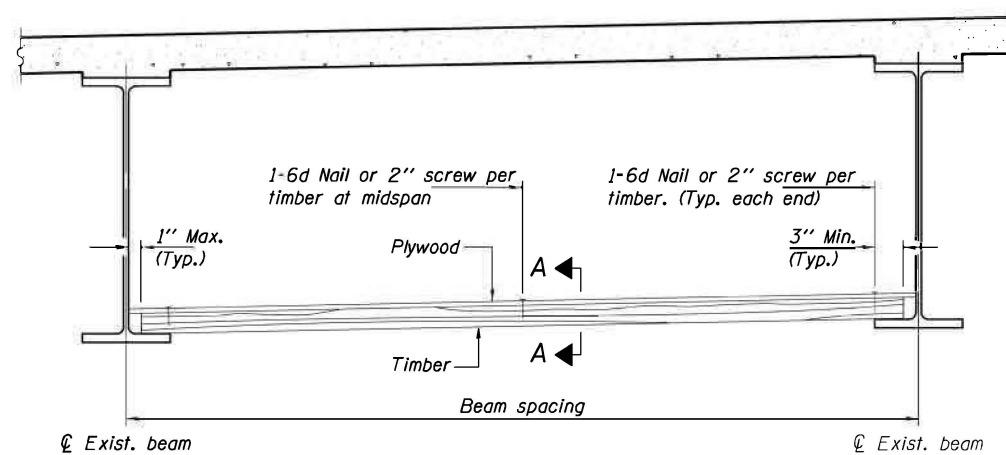
Transverse plywood joints shall be supported by timbers.

When 4" x 6" timbers are used, they shall be placed such that the wide face is horizontal and the narrow face is vertical.

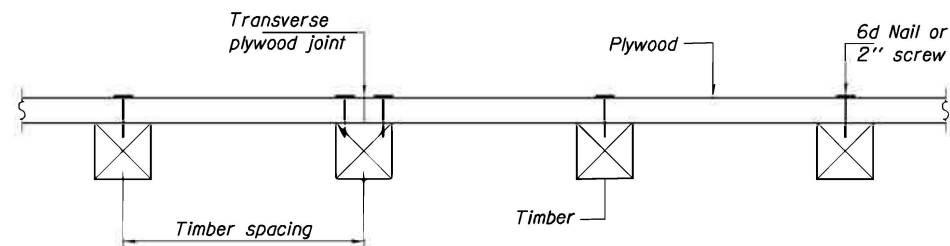
Design load = 200 psf.

TIMBER SPACING

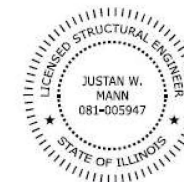
Structure Number	Timber Sizes (in.)		
	4" x 4" with min. Fb=1500 psi Fv=175 psi	4" x 6" with min. Fb=1500 psi Fv=175 psi	6" x 6" with min. Fb=1250 psi Fv=175 psi
	Maximum Timber Spacing (in.)		
016-0311	9	14	16
016-0995	8	12	16
016-2076	8	12	16



STEEL BEAMS



SECTION A-A



Expires November 30, 2026

Justin W. Mann

BILL OF MATERIAL

Item	Unit	Total
Protective Shield (Permanent)	Sq. Yd.	2737

PERMANENT PROTECTIVE SHIELD

MODEL: pps [Sheet]
FILE NAME: c:\pwworkspace\hassanm1197885D\102126-shd-DistStats.dgn

USER NAME = naved.hassan	DESIGNED -	REVISED -
	DRAWN -	REVISED -
	CHECKED -	REVISED -
PLOT DATE = 3/25/2026	DATE -	REVISED -

STATE OF ILLINOIS
DEPARTMENT OF TRANSPORTATION

PERMANENT PROTECTIVE SHIELD

SCALE: SHEET A005 OF 5 SHEETS STA. TO STA.

F.A.I. RTE.	SECTION	COUNTY	TOTAL SHEETS	SHEET NO.
290A	(3233-211-VB) I 25	COOK	15	15
CONTRACT NO. 80B86			ILLINOIS FED. AID PROJECT	