

INDEX OF SHEETS

1. Cover Sheet
2. Index of Sheets, General Notes, and Summary of Quantities
3. General Plan & Elevation
4. Machinery Room Layout Plan
5. Brake and Bearing Assemblies

GENERAL NOTES:

1. All work shall be performed in accordance with the Illinois Department of Transportation's "Standard Specifications for Road and Bridge Construction" (Adopted January 1, 2022), the "Supplemental Specifications and Recurring Special Provisions" (Adopted January 1, 2026), the details in the Plans, and the "Special Provisions" included in the contract documents.
2. Model numbers and details of standard components are based on manufacturer's catalog data current at the time the plans were prepared. Equivalent models from other manufacturer's may be substituted at the option of the Contractor and with the approval of the Engineer. Mention of a manufacturer's name or model number does not represent a preference, but is used to set a standard.
3. The Contractor shall coordinate with the Department all aspects of the procuring and delivering to designated sites. The Contractor is responsible for all labor, permits, weatherproof storage and equipment to deliver all contract materials and components.
4. The brake and bearing systems shall be delivered in a weatherproof container/packaging capable of storing the parts for several years at a Department facility or yard. The Contractor is to coordinate the details of the weatherproofing type, size, insulation, and waterproof requirements with the Department, and all costs shall be included under the corresponding pay items.
5. Delivery location for all components furnished under this contract shall be coordinated and approved by the Department. Possible locations are identified as the US 30 (Cass Street) Bridge's tender house located between North Bluff Street and North Joliet Street in Joliet, IL 60432 or "D" Construction's warehouse located at 1488 South Broadway, Coal City, IL 60416. The Contractor shall coordinate the exact delivery location and schedule with the Bureau of Construction, Helene Maldonado at (847) 846-4331 and Eric Ray at (847) 705-4252, at least four (4) weeks prior to delivery.

SUMMARY OF QUANTITIES

Code No.	Item Description	Unit	Total Quantities
X0326557	Refurbishing of Operating Machinery	L Sum	1
X0328541	Furnishing Machinery Brakes Location No. 1	Each	4
X0328551	Furnishing Motor Brakes Location No. 1	Each	4

MODEL: \$MODELNAME\$
FILE NAME: \$FILEL\$



USER NAME = _____	DESIGNED - CMS	REVISED - _____
	CHECKED - KMC	REVISED - _____
PLOT SCALE = NOT TO SCALE	DRAWN - CMS	REVISED - _____
PLOT DATE = MAR 2026	CHECKED - KMC	REVISED - _____

**STATE OF ILLINOIS
DEPARTMENT OF TRANSPORTATION**

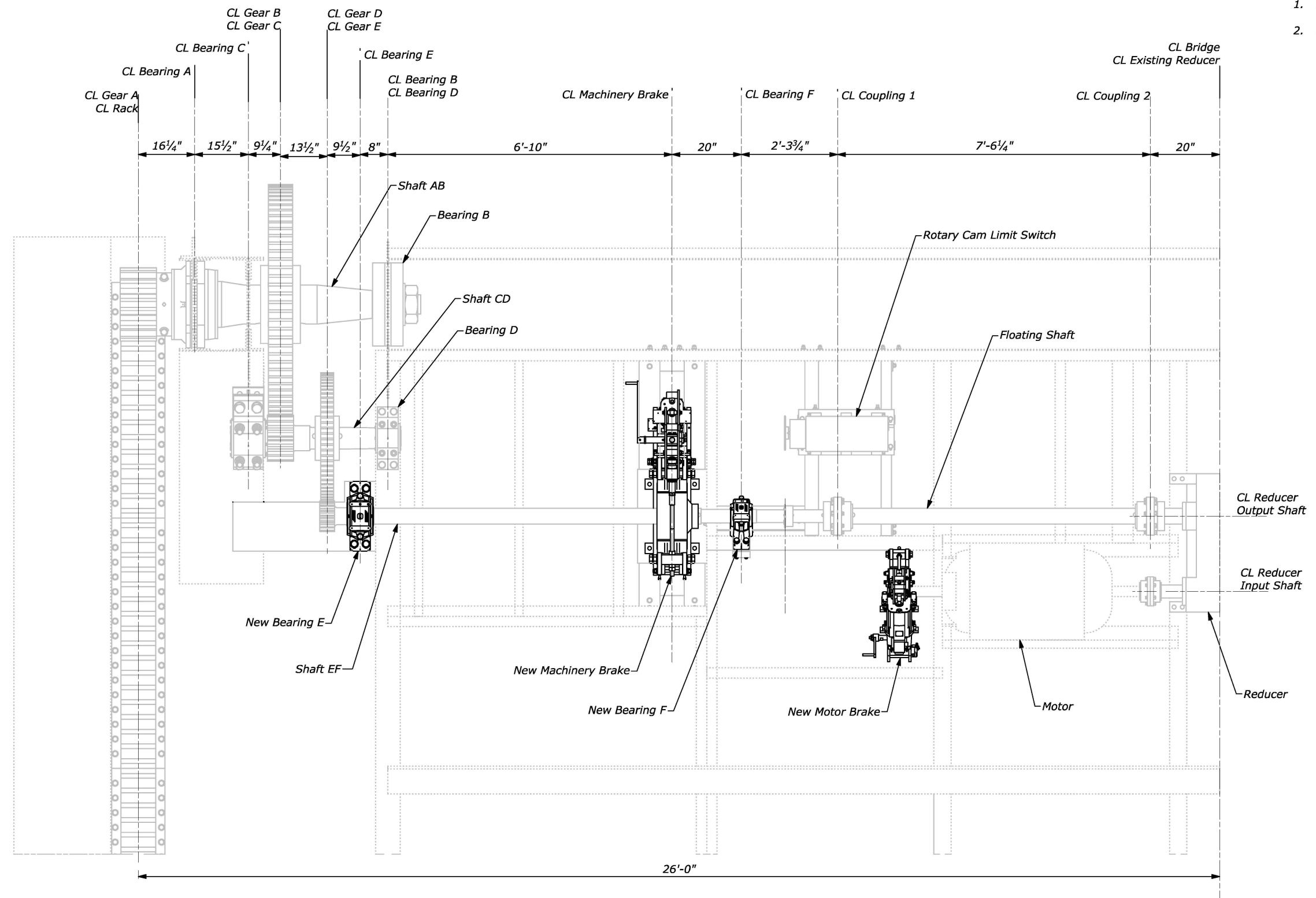
**INDEX OF SHEETS, GENERAL NOTES, AND SUMMARY OF QUANTITIES
STRUCTURE NO. 099-0101**

F.A.P. RTE.	SECTION	COUNTY	TOTAL SHEETS	SHEET NO.
607	(G-R) 126	WILL	5	2
CONTRACT NO. 80D36				
ILLINOIS			FED. AID PROJECT	

SHEET M-01 OF M-04 SHEETS

SDATES \$TIMES

- Notes:
 1. See Drawing M01 for General Machinery Notes.
 2. All dimensions shall be field verified prior to any work.



Machinery Room Layout Plan

Scale: 3/4" = 1'-0"

Machinery arrangement symmetrical about Bridge CL
 East side shown, West side similar



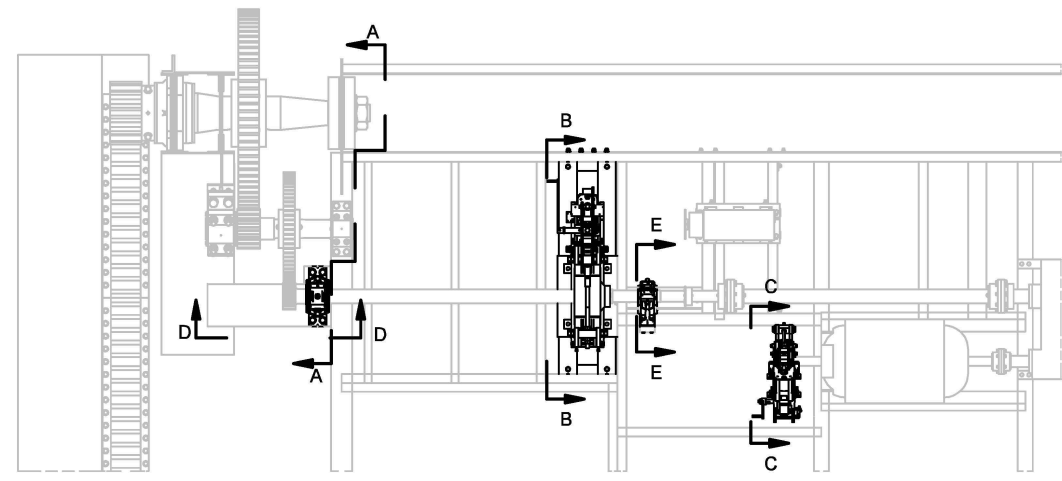
USER NAME =	DESIGNED - CMS	REVISED -
	CHECKED - KMC	REVISED -
PLOT SCALE = AS SHOWN	DRAWN - CMS	REVISED -
PLOT DATE = MAR 2026	CHECKED - KMC	REVISED -

**STATE OF ILLINOIS
 DEPARTMENT OF TRANSPORTATION**

**MACHINERY ROOM LAYOUT PLAN
 STRUCTURE NO. 099-0101**

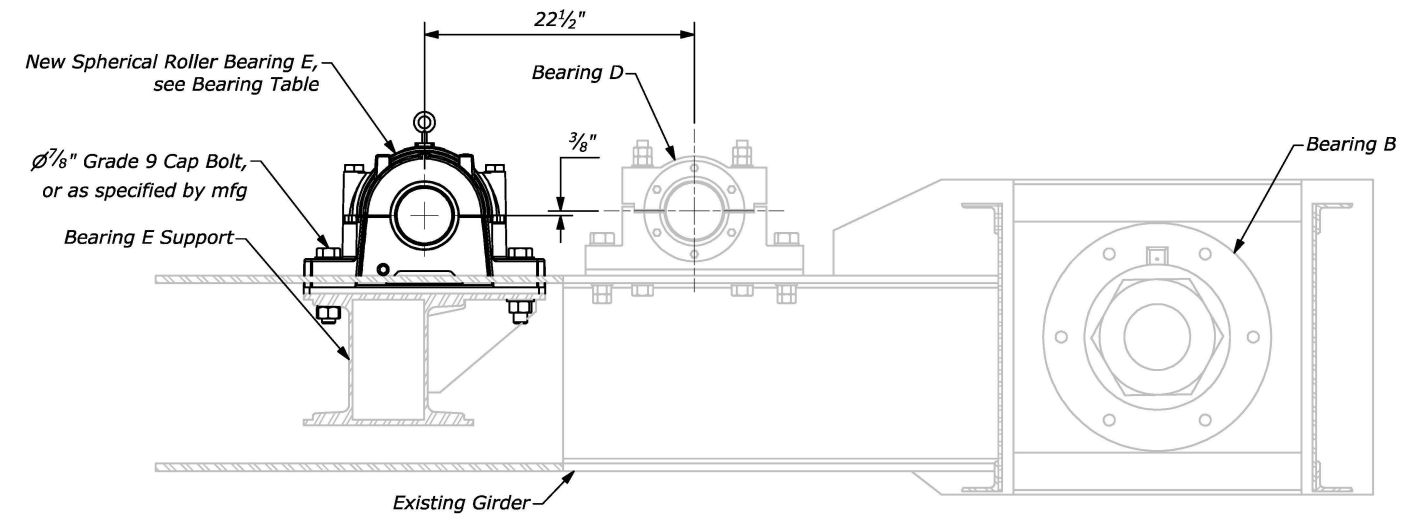
SHEET M-04 OF M-05 SHEETS

F.A.P. RTE. 607	SECTION (G-R) 126	COUNTY WILL	TOTAL SHEETS 5	SHEET NO. 4
			CONTRACT NO. 80D36	
		ILLINOIS FED. AID PROJECT		



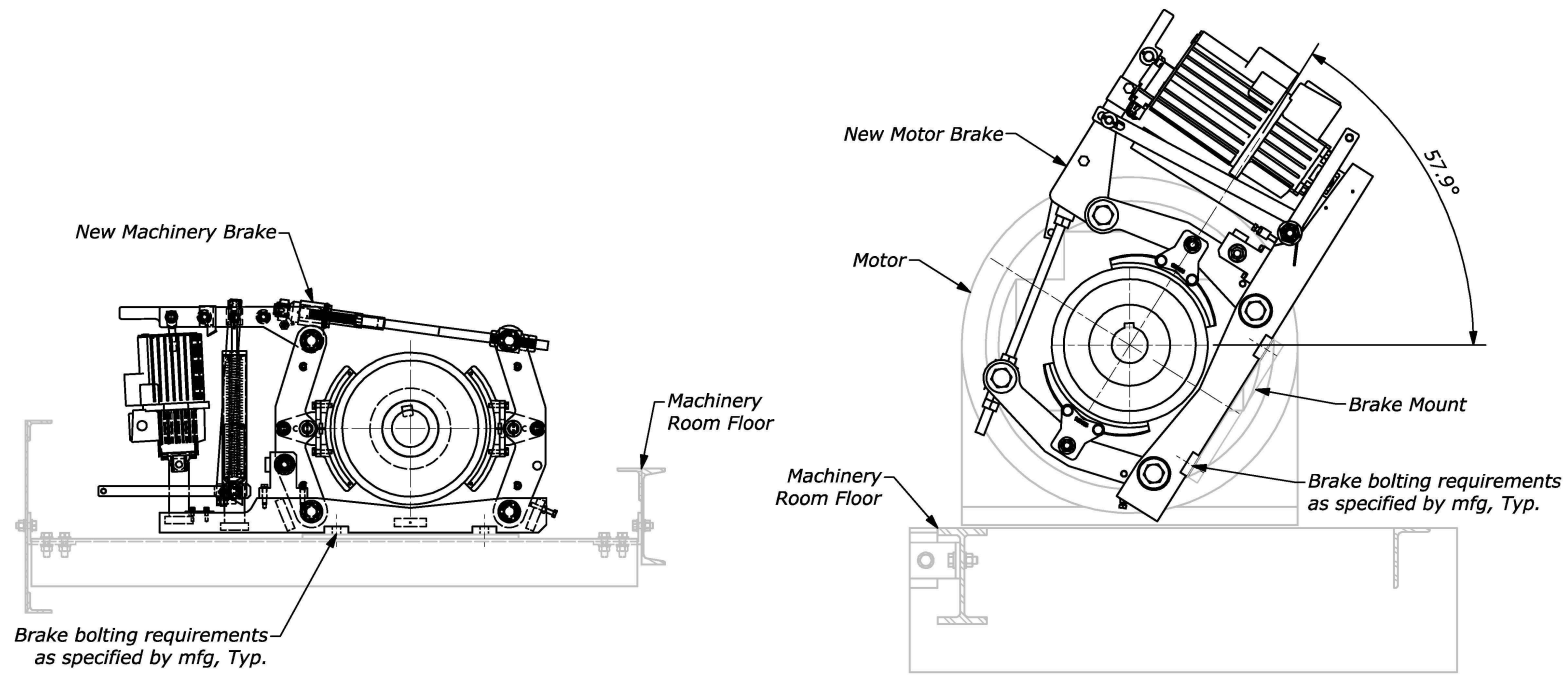
Key Plan

Scale: 3/8" = 1'-0"



Section A-A: Bearing E Assembly

Scale: 1 1/2" = 1'-0"

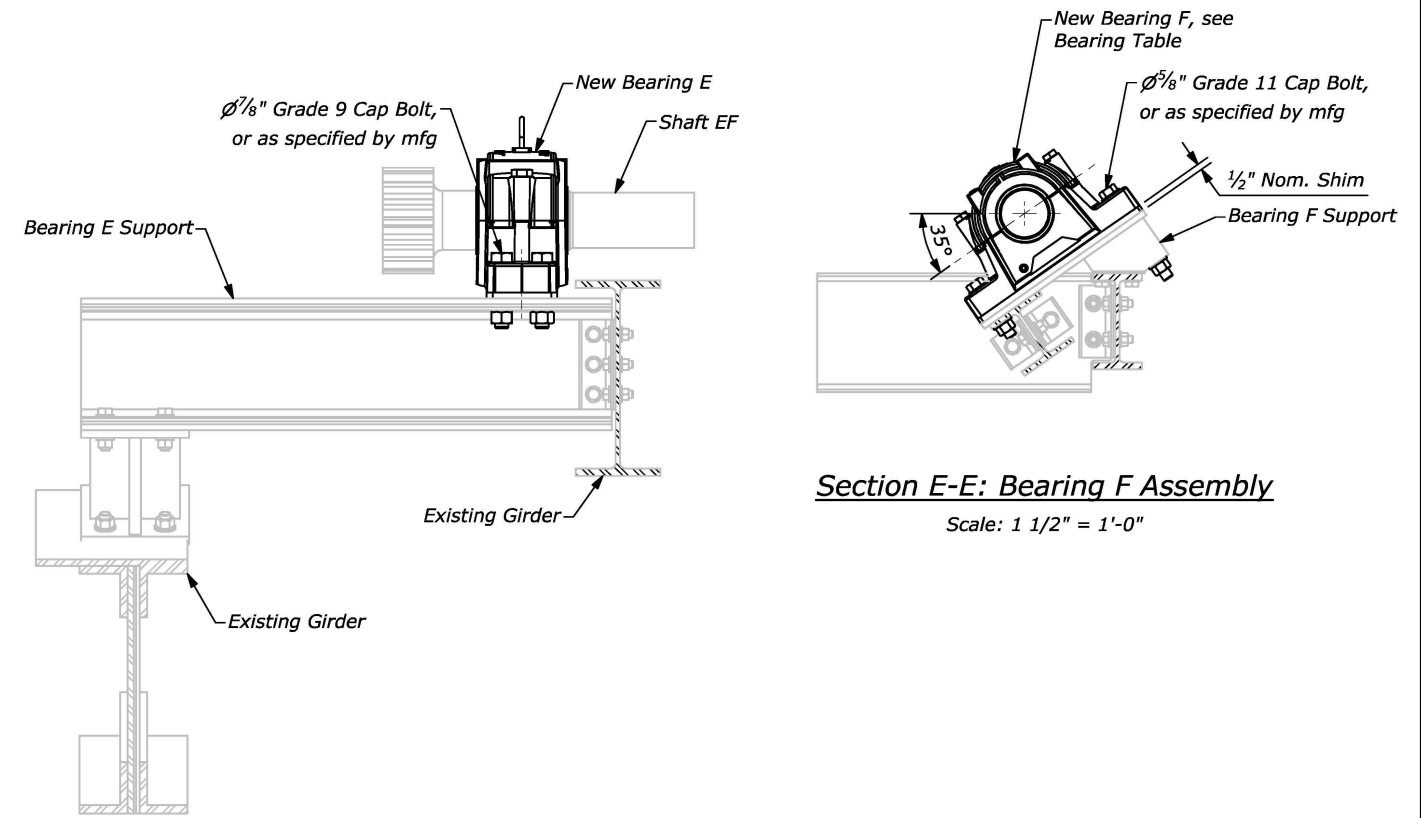


Section B-B: Machinery Brake Assembly

Scale: 1 1/2" = 1'-0"

Section C-C: Motor Brake

Scale: 1 1/2" = 1'-0"



Section E-E: Bearing F Assembly

Scale: 1 1/2" = 1'-0"

Section D-D: Bearing E Assembly

Scale: 1 1/2" = 1'-0"

Brakes		
Mark	Qty.	Type
Motor Brake	4	13" Brake Wheel Diameter, Brake Torque Setting 660 lb-ft
Machinery Brake	4	19" Brake Wheel Diameter, Brake Torque Setting 1800 lb-ft

Bearings			
Mark	Qty.	Type	Shaft Size
E	4	Split Pillowblock with Spherical Roller Bearings on Adapter Sleeve. Fixed Bearing, Grease Purgable Lip Seal	4-15/16"
F	4	Split Pillowblock with Self-Aligning Ball Bearings on Adapter Sleeve. Float Bearing, Labyrinth Seal	3-15/16"

Notes:

1. Provide tapered washers to be utilized at the underside of channels where bolt cannot be flush mounted.



USER NAME =	DESIGNED - CMS	REVISED -
	CHECKED - KMC	REVISED -
PLOT SCALE = AS SHOWN	DRAWN - CMS	REVISED -
PLOT DATE = MAR 2026	CHECKED - KMC	REVISED -

**STATE OF ILLINOIS
DEPARTMENT OF TRANSPORTATION**

**BRAKE AND BEARING ASSEMBLIES
STRUCTURE NO. 099-0101**

SHEET M-05 OF M-05 SHEETS

F.A.P. RTE. 607	SECTION (G-R) 126	COUNTY WILL	TOTAL SHEETS 5	SHEET NO. 5
			CONTRACT NO. 80D36	
		ILLINOIS FED. AID PROJECT		