

06-12-2026 LETTING ITEM 038

STATE OF ILLINOIS
DEPARTMENT OF TRANSPORTATION

FAU. RTE.	SECTION	COUNTY	TOTAL SHEETS	SHEET NO.
	24-00012-00-FP	KANE	28	1
FED. ROAD DIST. NO. 1	ALP 0183	CONTRACT NO. 61L30		

*FAU 0178, FAU 0117, FAU 0228, FAU 0228

FOR INDEX OF SHEETS, SEE SHEET NO. 2
FOR HIGHWAY STANDARDS, SEE SHEET NO. 2

TRAFFIC DATA

ADT:	2023 TRAFFIC
BROWN ROAD	1500 VPD
CAMPTON HILLS ROAD	600 VPD
DENKER ROAD	1000 VPD
TOWN HALL ROAD	900 VPD

ROADWAY	SPEED LIMIT	DESIGN SPEED
BROWN ROAD	35 MPH	35 MPH
CAMPTON HILLS ROAD	45-50 MPH	45-50 MPH
DENKER ROAD	40 MPH	40 MPH
TOWN HALL ROAD	40 MPH	40 MPH

DESIGN DESIGNATION

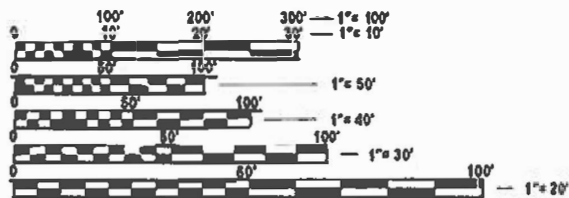
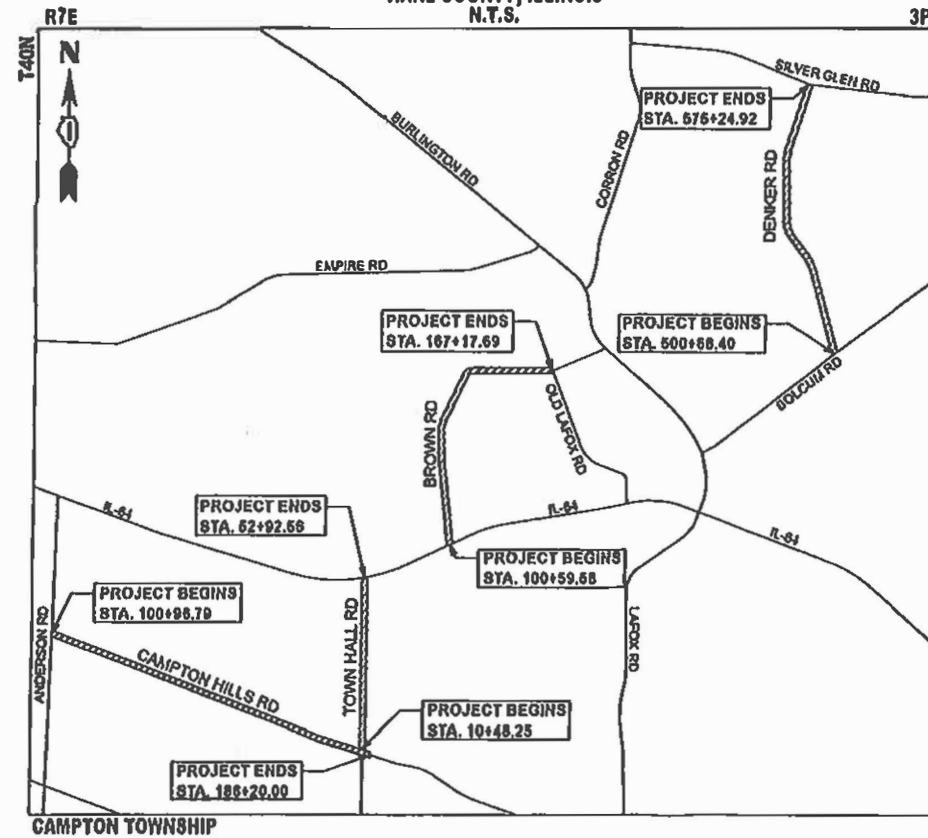
BROWN ROAD - MINOR COLLECTOR
CAMPTON HILLS ROAD - MINOR COLLECTOR
DENKER ROAD - MINOR COLLECTOR
TOWN HALL ROAD - MINOR COLLECTOR

**PLAN FOR PROPOSED
FEDERAL AID HIGHWAY**

VILLAGE OF CAMPTONS HILLS / CAMPTON TOWNSHIP
MUN 0178 (BROWN ROAD)
FROM ILLINOIS ROUTE 64 TO OLD LAFOX ROAD
TR 0117 (CAMPTON HILLS ROAD)
FROM ANDERSON ROAD TO TOWN HALL ROAD
MUN 0026 (DENKER ROAD)
FROM BOLCUM ROAD TO SILVER GLEN ROAD
MUN 0226 (TOWN HALL ROAD)
FROM CAMPTON HILLS ROAD TO ILLINOIS ROUTE 64
SECTION 24-00012-00-FP
PROJECT RDVH(142)
FULL DEPTH RECLAMATION, RESURFACING
KANE COUNTY
C-91-273-24

PROJECT LOCATION MAP

KANE COUNTY, ILLINOIS
N.T.S.



FULL SIZE PLANS HAVE BEEN PREPARED USING STANDARD ENGINEERING SCALES. REDUCED SIZED PLANS WILL NOT CONFORM TO STANDARD SCALES. IN MAKING MEASUREMENTS ON REDUCED PLANS, THE ABOVE SCALES MAY BE USED.

J.U.L.I.E.
JOINT UTILITY LOCATION INFORMATION FOR EXCAVATION
1-800-892-0123
OR 811

PROJECT ENGINEER: B. BELGRAVE
PROJECT MANAGER: J. STRZALKA

CONTRACT NO. 61L30

PROJECT LENGTH
GROSS LENGTH = 28,883 FT. = 5.09 MILE
BROWN ROAD = 6,658 FT. = 1.26 MILE
CAMPTON HILLS ROAD = 8,523 FT. = 1.62 MILE
DENKER ROAD = 7,457 FT. = 1.41 MILE
TOWN HALL ROAD = 4,245 FT. = 0.80 MILE
NET LENGTH = 26,883 FT. = 5.09 MILE



STATE OF ILLINOIS
DEPARTMENT OF TRANSPORTATION

APPROVED *March 27 2026*
Sara Gallucci
HIGHWAY COMMISSIONER, CAMPTON TOWNSHIP

APPROVED *March 27 2026*
Barbara Wajnacki
VILLAGE ENGINEER, VILLAGE OF CAMPTON HILLS

PASSED *April 9 2026*
[Signature]
DISTRICT ONE ENGINEER OF LOCAL ROADS AND STREETS

RELEASED FOR DID BASED ON LIMITED REVIEW *Rev 19 2026*
[Signature]
REGIONAL ENGINEER

**PRINTED BY THE AUTHORITY
OF THE STATE OF ILLINOIS**

FEDERAL AID PROGRAM ENGINEER: CARMEN RAMOS, P.E., SCHAMBURG, IL

INDEX OF SHEETS

1	COVER SHEET
2 - 3	INDEX OF SHEETS, STATE STANDARDS, DISTRICT ONE DETAILS AND GENERAL NOTES
4 - 6	SUMMARY OF QUANTITIES
7 - 10	TYPICAL SECTIONS
11	SCHEDULE OF QUANTITIES
12 - 22	RESURFACING PLAN
23	CONSTRUCTION DETAIL
24 - 29	IDOT DISTRICT 1 DETAILS

DISTRICT ONE DETAILS

<u>STANDARD NO.</u>	<u>LIST OF DESCRIPTION</u>
BD-32	BUTT JOINT AND HMA TAPER DETAILS
BD-34	DETAILS FOR DEPRESSED CURB & GUTTER AND SHOULDER TREATMENT AT TBT TY. 1 SPL.
TC-10	TRAFFIC CONTROL AND PROTECTION FOR SIDE ROADS, INTERSECTIONS, AND DRIVEWAYS
TC-13	DISTRICT ONE TYPICAL PAVEMENT MARKINGS
TC-22	ARTERIAL ROAD INFORMATION SIGN

STATE STANDARDS

<u>STANDARD NO.</u>	<u>LIST OF DESCRIPTION</u>
000001-09	STANDARD SYMBOLS, ABBREVIATIONS, AND PATTERNS
424016-06	MID-BLOCK CURB RAMPS FOR SIDEWALKS
630101-11	STRONG POST GUARDRAIL ATTACHED TO CULVERT
701001-02	OFF-RD OPERATIONS, 2L, 2W, MORE THAN 15' AWAY
701006-05	OFF-RD OPERATIONS, 2L, 2W, 15' TO 24" FROM PAVEMENT EDGE
701201-05	LANE CLOSURE, 2L, 2W, DAY ONLY, FOR SPEEDS ≥ 45 MPH
701301-04	LANE CLOSURE, 2L, 2W, SHORT TIME OPERATIONS
701306-04	LANE CLOSURE, 2L, 2W, SLOW MOVING OPERATIONS, DAY ONLY, FOR SPEEDS ≥ 45 MPH
701311-03	LANE CLOSURE, 2L, 2W, MOVING OPERATIONS, DAY ONLY
701501-06	URBAN LANE CLOSURE, 2L, 2W, UNDIVIDED
701801-06	SIDEWALK, CORNER OR CROSSWALK CLOSURE
701901-11	TRAFFIC CONTROL DEVICES
725001-01	OBJECT AND TERMINAL MARKERS
782006-01	GUARDRAIL AND BARRIER WALL REFLECTOR MOUNTING DETAILS

GENERAL NOTES

- ALL REFERENCES TO "STANDARD SPECIFICATIONS" IN THESE GENERAL NOTES SHALL BE INTERPRETED TO MEAN "STANDARD SPECIFICATIONS FOR ROAD AND BRIDGE CONSTRUCTION" ADOPTED BY THE ILLINOIS DEPARTMENT OF TRANSPORTATION, JANUARY 1, 2022. ALL WORK TO BE COMPLETED IN ACCORDANCE WITH THE STANDARD SPECIFICATIONS.
- IT IS THE CONTRACTOR' S RESPONSIBILITY TO ASCERTAIN EXISTING FIELD CONDITIONS PRIOR TO BIDDING ON THE PROJECT.
- BEFORE STARTING ANY EXCAVATION, THE CONTRACTOR SHALL CALL "JULIE" (JOINT UTILITY LOCATION INFORMATION FOR EXCAVATION) AT (800) 892-0123 FOR FIELD LOCATIONS OF BURIED UTILITIES (48 HOURS NOTIFICATION IS REQUIRED).
- THE CONTRACTOR WILL NOT BE ALLOWED TO SET UP A YARD OR FIELD OFFICE ON MUNICIPAL PROPERTY WITHOUT WRITTEN PERMISSION FROM THE ENGINEER.
- THE CONTRACTOR SHALL BE RESPONSIBLE FOR SWEEPING AND CLEANING STREETS OF ANY DEBRIS AND MATERIAL THAT HAS ACCUMULATED AS A RESULT OF THE CONSTRUCTION ACTIVITY. A MECHANICAL SWEEPER, MECHANICALLY DRIVEN AIR AND HANDWORK WITH SHOVEL AND BROOM SHALL BE UTILIZED TO PROVIDE A CLEAN STREET FOR THE MOTORING PUBLIC. WITHIN 24 HOURS OF PLACING PRIME COAT AND THE LAYING OF HMA, THE CONTRACTOR SHALL SWEEP THE PAVEMENT AND REMOVE STANDING WATER, EARTH, WEEDS, LEAVES, DIRT, CONSTRUCTION DEBRIS, AND ALL LOOSE MATERIAL.
- THE CONTRACTOR SHALL PROVIDE POSITIVE DRAINAGE AND TEMPORARY DRAINAGE OUTLETS WITHIN THE WORK ZONE AT ALL TIMES. SHOULD ANY EXCAVATED AREA BECOME INUDATED WITH WATER DURING CONSTRUCTION, THE CONTRACTOR WILL BE REQUIRED TO REMOVE AND REPLACE AND LAYERS OF THE WORK ZONE IMPACTED AT NO ADDITIONAL COST TO THE CONTRACT. IMPACTED AREAS REQUIRING REMEDIATION WILL BE DETERMINED AT THE SOLE DISCRETION OF THE ENGINEER.
- ABANDONED UNDERGROUND UTILITIES THAT CONFLICT WITH CONSTRUCTION SHALL BE DISPOSED OF OUTSIDE VILLAGE PROPERTY ACCORDING TO ARTICLE 202.03 OF THE STANDARD SPECIFICATIONS AND AS DIRECTED BY THE ENGINEER.
- ADJACENT LAND TO TRAIL CONSTRUCTION CONTAINS ACTIVE AGRICULTURE PRODUCTION. EQUIPMENT, VEHICLES, AND PERSONNEL MAY NOT ACCESS THESE FIELDS WITHOUT EXPRESSED PERMISSION BY THE OWNER. NO MATERIALS SHALL SPILL OUT TO, NOR MATERIALS BE PLACED, IN THESE ACTIVE AGRICULTURE FIELDS. ANY CONSTRUCTION ACTIVITY DISCOVERED AFFECTING THESE FIELDS SHALL BE REPAIRED TO THE OWNER'S SATISFICATION.
- PER VILLAGE ORDINANCE, CONSTRUCTION WORK MAY BE PERFORMED MONDAY THRU SATURDAY DURING THE HOURS OF 7:00 A.M. TO 8:00 P.M. AND ON SUNDAYS FROM 8:00 A.M. TO 6:00 P.M. NO WORK MAY BE PERFORMED PRIOR OR BEYOND THIS PERIOD WITHOUT PRIOR WRITTEN APPROVAL FROM THE VILLAGE.
- EXISTING AGGREGATE DRIVEWAYS WILL BE RESURFACED AND PAID FOR IN CONJUCTION WITH MAINLINE PAVING. SEE CONSTRUCTION DETAILS.
- THE AGGREGATE GRADATION FOR THE LOWER 9 INCHES OF AGGREGATE SUBGRADE IMPROVEMENT 12" SHALL BE CS 1 OR RR 1.
- AGGREGATE SUBGRADE IMPROVEMENT 12" HAS BEEN PROVIDED FOR USE AT THE LOCATIONS INDICATED FOR SOILS THAT TEND TO BE UNSTABLE AND/OR UNSUITABLE. THE ACTUAL NEED FOR REMOVAL AND REPLACEMENT WITH ABOVE ITEM WILL BE DETERMINED IN THE FIELD AT THE TIME OF CONSTRUCTION BY THE GEOTECHNICAL ENGINEER. ALL POTENTIALLY UNSTABLE SOILS SHOULD BE TESTED WITH A STATIC OR DYNAMIC CONE PENETROMETER AND TREATED IN ACCORDANCE WITH ARTICLE 301.04 OF THE SSRBC AND IDOT SUBGRADE STABILITY MANUAL. IF UNSTABLE AND/OR UNSUITABLE SOILS ARE NOT ENCOUNTERED, THEN THE QUANTITY SHALL BE DEDUCTED AND NO ADDITIONAL COMPENSATION WILL BE DUE TO THE CONTRACTOR.

- ALL NITROGEN, PHOSPHOROUS AND POTASSIUM FERTILIZER NUTRIENTS HAVE BEEN INTENTIONALLY OMITTED FROM THE CONTRACT ON SEEDING APPLICATION.
- SEE GEOTECHNICAL REPORTS FOR CEMENT MIX DESIGNS. RATES MAY BE ADJUSTED DURING CONSTRUCTION BASED UPON ACTUAL FIELD CONDITIONS ENCOUNTERED UPON RECOMMENDATION OF THE GEOTECHNICAL ENGINEER AND APPROVAL OF THE ENGINEER.
- CONTRACTOR SHALL TAKE PRECAUTION BY PRESERVING EXISTING TREES WITHIN THE RIGHT OF WAY. IF ANY DAMAGE OCCURS, TREES SHALL BE REPLACED IN KIND PER ARTICLE 201.07 REPAIR OR REPLACEMENT OF EXISTING PLANT MATERIAL REQUIREMENTS STATED HEREIN.

UTILITIES

- THE CONTRACTOR SHALL BE RESPONSIBLE FOR CONTACTING THE OWNERS OF ALL UTILITIES PRIOR TO CONSTRUCTION TO DETERMINE THE LOCATION OF ALL UTILITY EQUIPMENT. THE CONTRACTOR SHALL COOPERATE WITH ALL UTILITY OWNERS IN ACCORDANCE WITH THE STANDARD SPECIFICATIONS IF UTILITY RELOCATION, ADJUSTMENT, OR PROTECTION IS NECESSARY.
- THE CONTRACTOR SHALL BE RESPONSIBLE FOR THE PROTECTION OF ALL UNDERGROUND AND SURFACE UTILITIES EVEN THOUGH THEY MIGHT NOT BE SHOWN ON THE PLANS. ANY UTILITY PROPERTY DAMAGED DURING CONSTRUCTION SHALL BE REPAIRED OR REPLACED TO THE SATISFACTION OF THE OWNER.
- THE CONTRACTOR SHALL USE ALL NECESSARY PRECAUTIONS AND PROTECTION MEASURES REQUIRED TO MAINTAIN EXISTING UTILITIES, SEWERS, AND APPURTENANCES THAT MUST BE KEPT IN OPERATION.
- ANY LOOSE MATERIAL DEPOSITED IN THE FLOWLINE OF CULVERTS OR DITCHES, WHICH OBSTRUCTS THE NATURAL FLOW OF WATER SHALL BE REMOVED AT THE CLOSE OF EACH WORKING DAY. PRIOR TO ACCEPTANCE OF THE IMPROVEMENT, ALL DRAINAGE APPURTENANCES SHALL BE FREE OF DIRT AND DEBRIS.
- THE INDISCRIMINATE USE OF FIRE HYDRANTS OR EXISTING STREAMS, CREEKS, WETLANDS OR PONDS IS STRICTLY PROHIBITED. THE CONTRACTOR SHALL PROVIDE A WATER TRUCK AND DRIVER AS REQUIRED TO OBTAIN AND TRANSPORT THIS WATER. THE CONTRACTOR SHALL BE RESPONSIBLE FOR OBTAINING THIS WATER FROM AN APPROVED SOURCE. IF THIS WATER IS FROM A SOURCE OTHER THAN HIS YARD, WRITTEN APPROVAL FROM THE AGENCY HAVING JURISDICTION FOR THE SOURCE OF THE WATER MUST BE RECEIVED BY THE ENGIEER PRIOR TO USE OF THE WATER.

EARTHWORK

- THE ENGINEER WILL COMPLETE A STRING-LINE REVIEW OF THE CEMENT STABILIZED SUBBASE UPON TWENTY-FOUR (24) HOURS NOTICE FROM THE CONTRACTOR. THE CONTRACTOR WILL NOT BE PERMITTED TO COVER THE LAYER BEING REVIEWED UNTIL WRITTEN NOTICE HAS BEEN RECEIVED FROM THE ENGINEER. SEGMENTS OF THE ROADWAY CONSTRUCTION MAY BE SEQUENCED APPROPRIATELY TO PERMIT CONTINUOUS CONSTRUCTION OPERATIONS.
- FOLLOWING ACCEPTANCE OF THE STRING-LINE REVIEW BY THE ENGINEER, THE CONTRACTOR SHALL PERFORM A PROOF ROLL OF THE CEMENT STABILIZED SUBBASE WITH A LOADED SIX-WHEELER IN THE PRESENCE OF THE ENGINEER AND THE VILLAGE. A WEIGHT TICKET WILL BE REQUIRED. THE PROOF ROLL CANNOT BE SCHEDULED WHEN THERE IS GREATER THAN A TWENTY FIVE PERCENT (25%) CHANCE OF RAIN IN THE FORECAST FOR THE SUBSEQUENT FORTY-EIGHT (48) HOURS AFTER THE PROOF ROLL IN ORDER TO PERMIT THE CONTRACTOR ENOUGH TIME TO TAKE ANY NOTED REMEDIAL ACTION AND/OR COMPLETE DELIVERY OF AGGREGATE BASE COURSE TO COVER THE SUB GRADE.

*0178, 0117, 0026, 0226

MODEL: Index sheet (Sheet)
FILE NAME: 2304066-SH-Index.dgn



USER NAME = benjamin.belgrave	DESIGNED - JJS	REVISED -
	DRAWN - BJB	REVISED -
PLOT SCALE = 0.16666633' / In.	CHECKED -	REVISED -
PLOT DATE = 3/27/2026	DATE - 3/27/2026	REVISED -

**STATE OF ILLINOIS
DEPARTMENT OF TRANSPORTATION**

**INDEX OF SHEETS, STATE STANDARDS,
DISTRICT 1 DETAILS & GENERAL NOTES**

SCALE: SHEET 1 OF 2 SHEETS STA. TO STA.

F.A.U. RTE.	SECTION	COUNTY	TOTAL SHEETS	SHEET NO.
*	24-00012-00-FP	KANE	28	2
CONTRACT NO.			61L30	
ILLINOIS		FED. AID PROJECT		

GENERAL NOTES CONTINUED

PAVING

1. LONGITUDINAL CONSTRUCTION JOINTS WILL NOT BE PERMITTED.
2. TRANSVERSE CONSTRUCTION JOINTS WILL BE ALLOWED DURING PAVING PROVIDED THE CONTRACTOR COMPLETE A SAWCUT AT LEAST SIX INCHES INTO THE ADJACENT MAT AT THE START OF PAVING THE FOLLOWING DAY.
3. CONSTRUCTION JOINTS THAT SIT OVERNIGHT WILL REQUIRE CRACK ROUTING AND SEALING UPON COMPLETION OF SURFACE COURSE CONSTRUCTION. JOINT SEALANT SHALL MEET THE REQUIREMENTS OF ARTICLE 1050.02 OF THE STANDARD SPECIFICATIONS.

SIGNING AND STRIPING

1. SIGNS SHALL NOT BE MOVED OR COVERED UNTIL PROGRESS OF WORK NECESSITATES IT.
2. THE CONTRACTOR WILL BE REQUIRED TO TEMPORARILY RESET ALL SUCH SIGNS THAT INTERFERE WITH HIS CONSTRUCTION OPERATIONS. ALL SUCH SIGNS MUST BE MAINTAINED STRAIGHT AND CLEAN FOR THE DURATION OF THE TEMPORARY SETTING AND MUST BE RE-ERECTED AT A TEMPORARY LOCATION IN A WORKMANLIKE MANNER AND BE VISIBLE TO THE TRAFFIC FOR WHICH IT IS INTENDED.
3. SEE IDOT DISTRICT ONE DETAILS AND PLAN SHEETS FOR PAVEMENT MARKING DETAILS.
4. GRINDING OF PAVEMENT MARKINGS ON NEWLY CONSTRUCTED HOT-MIX ASPHALT PAVEMENT WILL NOT BE PERMITTED.
5. THE CONTRACTOR SHALL BE RESPONSIBLE FOR POSTING 'FRESH OIL' SIGNS (48"X48" MINIMUM) AS NEEDED FOR THE PROJECT. THE CONTRACTOR SHALL INSTALL AND MAINTAIN TEMPORARY SIGNS IN THE PARKWAY TWENTY-FOUR (24) HOURS PRIOR TO STARTING WORK. THE CONTRACTOR SHALL REMOVE THE SIGNS AND REINSTALL THEM AS NEEDED.
6. IN ACCORDANCE WITH THE IDOT DROP OFF POLICY AT INSTANCES IN WHICH THERE IS A GREATER THAN 1.5 INCH HEIGHT DIFFERENCE IN VERTICAL MILLED FACE, OR WHEN THERE IS A GREATER THAN 2.5 INCH LIFT DIFFERENCE, UNEVEN LANE SIGNS (W8-11) WILL BE REQUIRED.
7. THE CONTRACTOR SHALL CONTACT KALPANA KANNAN-HOSADURGA, THE DISTRICT ONE TRAFFIC CONTROL SUPERVISOR, AT KALPANA.KANNAN-HOSADURGA@ILLINOIS.GOV A MINIMUM OF 72 HOURS IN ADVANCE OF BEGINNING WORK.

CONSTRUCTION LAYOUT

NONE.

COMMITMENTS

NONE.

*0178, 0117, 0026, 0226

MODEL: Index sheet-1 (Sheet)
FILE NAME: 2304066-Str-Index.dgn



USER NAME = benjamin.belgrave	DESIGNED - JJS	REVISED -
	DRAWN - BJB	REVISED -
PLOT SCALE = 0.16666633' / in.	CHECKED -	REVISED -
PLOT DATE = 3/27/2026	DATE - 3/27/2026	REVISED -

**STATE OF ILLINOIS
DEPARTMENT OF TRANSPORTATION**

**INDEX OF SHEETS, STATE STANDARDS,
DISTRICT 1 DETAILS & GENERAL NOTES**

SCALE: SHEET 2 OF 2 SHEETS STA. TO STA.

F.A.U. RTE.	SECTION	COUNTY	TOTAL SHEETS	SHEET NO.
*	24-00012-00-FP	KANE	28	3
CONTRACT NO.			61L30	
ILLINOIS		FED. AID PROJECT		

CODE NO.	ITEM	UNIT	TOTAL QUANTITY	CONSTRUCTION CODE	CONSTRUCTION CODE
				ROADWAY 80% FEDERAL 20% STATE 0005	ROADWAY 75% FEDERAL 25% STATE 0005
20201200	REMOVAL AND DISPOSAL OF UNSUITABLE MATERIAL	CU YD	231	68	163
21101615	TOPSOIL FURNISH AND PLACE, 4"	SQ YD	4,482	1,421	3,061
25000210	SEEDING, CLASS 2A	ACRE	0.94	0.30	0.64
25100125	MULCH, METHOD 3	ACRE	0.94	0.30	0.64
30300112	AGGREGATE SUBGRADE IMPROVEMENT 12"	SQ YD	689	204	485
35101600	AGGREGATE BASE COURSE, TYPE B 4"	SQ YD	17	0	17
* 35200500	CEMENT	100 WT	42,425	9,425	33,000
40600275	BITUMINOUS MATERIALS (PRIME COAT)	POUND	156,726	46,386	110,340
40600290	BITUMINOUS MATERIALS (TACK COAT)	POUND	15,467	4,574	10,893
40600370	LONGITUDINAL JOINT SEALANT	FOOT	26,885	8,524	18,361
40600982	HOT-MIX ASPHALT SURFACE REMOVAL - BUTT JOINT	SQ YD	507	119	388
40603080	HOT-MIX ASPHALT BINDER COURSE, IL-19.0, N50	TON	8,663	2,562	6,101
40604060	HOT-MIX ASPHALT SURFACE COURSE, IL-9.5, MIX "D", N50	TON	6,844	2,026	4,818
40800029	BITUMINOUS MATERIALS (TACK COAT)	POUND	396	131	265

* SPECIALTY ITEM

*0178, 0117, 0026, 0226

MODEL: SOC-1 [Sheet]
FILE NAME: 2304066-Stt-Quantities.dgn



USER NAME = benjamin.belgrave	DESIGNED - JJS	REVISED -
	DRAWN - BJB	REVISED -
PLOT SCALE = 0.16666633' / in.	CHECKED -	REVISED -
PLOT DATE = 3/27/2026	DATE - 3/27/2026	REVISED -

**STATE OF ILLINOIS
DEPARTMENT OF TRANSPORTATION**

SUMMARY OF QUANTITIES

SCALE: SHEET 1 OF 3 SHEETS STA. TO STA.

F.A.U. RTE.	SECTION	COUNTY	TOTAL SHEETS	SHEET NO.
*	24-00012-00-FP	KANE	28	4
CONTRACT NO.			61L30	
ILLINOIS		FED. AID PROJECT		

CODE NO.	ITEM	UNIT	TOTAL QUANTITY	CONSTRUCTION CODE	
				ROADWAY 80% FEDERAL 20% STATE 0005	ROADWAY 75% FEDERAL 25% STATE 0005
40800050	INCIDENTAL HOT-MIX ASPHALT SURFACING	TON	102	34	68
42400200	PORTLAND CEMENT CONCRETE SIDEWALK 5 INCH	SQ FT	147	0	147
42400800	DETECTABLE WARNINGS	SQ FT	42	0	42
44000163	HOT-MIX ASPHALT SURFACE REMOVAL, 3 1/2"	SQ YD	68,583	20,326	48,257
44000600	SIDEWALK REMOVAL	SQ FT	147	0	147
48101200	AGGREGATE SHOULDERS, TYPE B	TON	1,274	406	868
* 63000030	STRONG POST GUARDRAIL ATTACHED TO CULVERT	FOOT	50	0	50
* 63100167	TRAFFIC BARRIER TERMINAL, TYPE 1 (SPECIAL) TANGENT	EACH	4	0	4
63200310	GUARDRAIL REMOVAL	FOOT	506	0	506
67100100	MOBILIZATION	L SUM	1	0.25	0.75
70100450	TRAFFIC CONTROL AND PROTECTION, STANDARD 701201	L SUM	1	0.25	0.75
70100460	TRAFFIC CONTROL AND PROTECTION, STANDARD 701306	L SUM	1	0.25	0.75
70102620	TRAFFIC CONTROL AND PROTECTION, STANDARD 701501	L SUM	1	0.25	0.75
70102640	TRAFFIC CONTROL AND PROTECTION, STANDARD 701801	L SUM	1	0	1

* SPECIALTY ITEM

*0178, 0117, 0026, 0226

MODEL: SQ02 (Sheet)
FILE NAME: 230406-Sht-Quantities.dgn



USER NAME = benjamin.belgrave	DESIGNED - JJS	REVISED -
	DRAWN - BJB	REVISED -
PLOT SCALE = 0.16666633' / In.	CHECKED -	REVISED -
PLOT DATE = 3/27/2026	DATE - 3/27/2026	REVISED -

**STATE OF ILLINOIS
DEPARTMENT OF TRANSPORTATION**

SUMMARY OF QUANTITIES

SCALE: SHEET 2 OF 3 SHEETS STA. TO STA.

F.A.U. RTE.	SECTION	COUNTY	TOTAL SHEETS	SHEET NO.
*	24-00012-00-FP	KANE	28	5
CONTRACT NO.			61L30	
ILLINOIS		FED. AID PROJECT		

CODE NO.	ITEM	UNIT	TOTAL QUANTITY	CONSTRUCTION CODE	
				ROADWAY 80% FEDERAL 20% STATE 0005	ROADWAY 75% FEDERAL 25% STATE 0005
70300100	SHORT TERM PAVEMENT MARKING	FOOT	4,580	1,109	3,471
70300150	SHORT TERM PAVEMENT MARKING REMOVAL	SQ FT	1,528	370	1,158
* 72501000	TERMINAL MARKER - DIRECT APPLIED	EACH	4	0	4
* 78000200	THERMOPLASTIC PAVEMENT MARKING - LINE 4"	FOOT	96,042	27,783	68,259
* 78000400	THERMOPLASTIC PAVEMENT MARKING - LINE 6"	FOOT	44	0	44
* 78000500	THERMOPLASTIC PAVEMENT MARKING - LINE 8"	FOOT	1,069	0	1,069
* 78000600	THERMOPLASTIC PAVEMENT MARKING - LINE 12"	FOOT	67	0	67
* 78000650	THERMOPLASTIC PAVEMENT MARKING - LINE 24"	FOOT	190	85	105
* 78200005	GUARDRAIL REFLECTORS, TYPE A	EACH	6	0	6
* LR400903	FULL-DEPTH RECLAMATION, 12.0"	SQ YD	71,437	21,235	50,202
X0327611	REMOVE AND REINSTALL BRICK PAVER	SQ FT	225	0	225
* X3580302	PREPARATION OF BASE (SPECIAL)	SQ YD	152	0	152
X4400196	HOT-MIX ASPHALT SURFACE REMOVAL (SPECIAL)	SQ YD	259	77	182
X7200061	TEMPORARY INFORMATION SIGNING	SQ FT	208	52	156

* SPECIALTY ITEM

*0178, 0117, 0026, 0226

MODEL: SQC_3 [Sheet]
FILE NAME: \\hrgreen.com\hrg\Drawings\2023\2304066\CAD\Sheets\2304066-Sht-Quantities.dgn



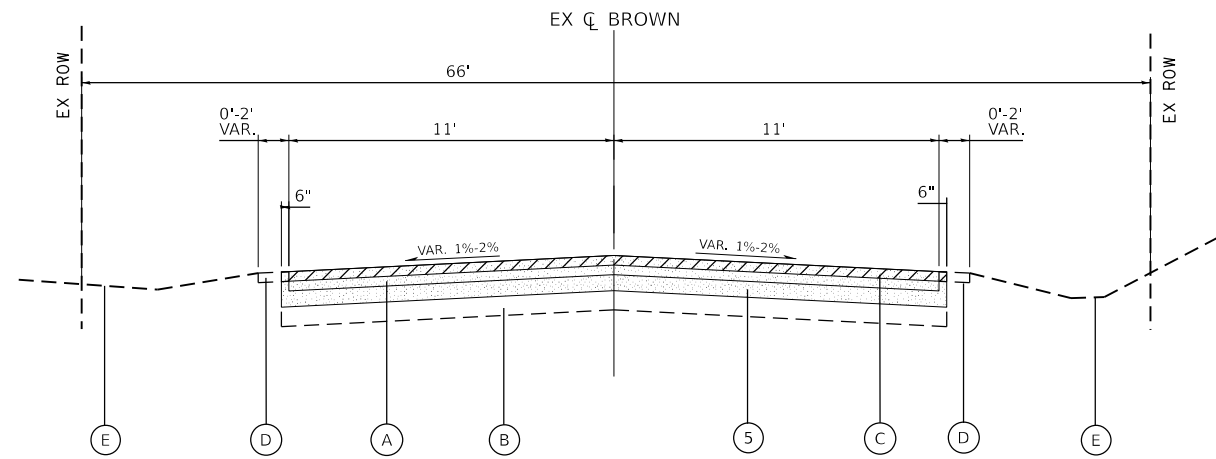
USER NAME = benjamin.belgrave	DESIGNED - JJS	REVISED -
	DRAWN - BJB	REVISED -
PLOT SCALE = 0.16666633' / in.	CHECKED -	REVISED -
PLOT DATE = 3/27/2026	DATE - 3/27/2026	REVISED -

**STATE OF ILLINOIS
DEPARTMENT OF TRANSPORTATION**

SUMMARY OF QUANTITIES

SCALE: SHEET 3 OF 3 SHEETS STA. TO STA.

F.A.U. RTE.	SECTION	COUNTY	TOTAL SHEETS	SHEET NO.
*	24-00012-00-FP	KANE	28	6
CONTRACT NO.			61L30	
ILLINOIS FED. AID PROJECT				



EXISTING TYPICAL SECTION

BROWN ROAD (IL ROUTE 64 TO OLD LAFOX ROAD)
STA. 100+59.58 TO STA. 167+17.69

EXISTING LEGEND

- (A) EXISTING HOT-MIX ASPHALT PAVEMENT (SEE PAVEMENT CORES)
- (B) EXISTING AGGREGATE BASE COURSE (SEE PAVEMENT CORES)
- (C) HOT-MIX ASPHALT SURFACE REMOVAL, 3 1/2"
- (D) EXISTING EARTH/AGGREGATE SHOULDER
- (E) EXISTING GROUND

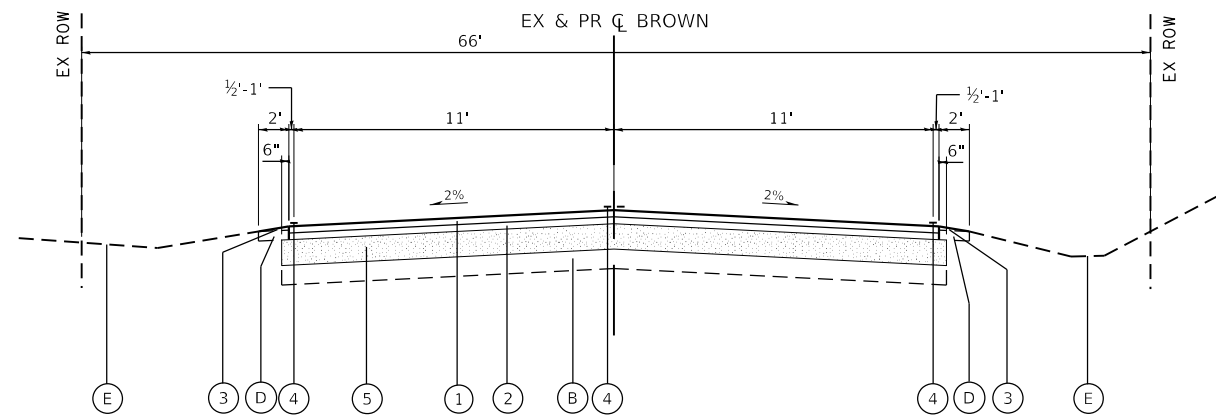
HOT-MIX ASPHALT SURFACE REMOVAL, 3 1/2" / AGGREGATE SHOULDER (TO BE PULVERIZED)

NOTES:
BASE REPAIR LOCATIONS WILL BE DETERMINED BY THE ENGINEER.

STREETS WITH ASPHALT PAVEMENT REMAINING AFTER MILLING OPERATIONS WILL REQUIRE TWO PASSES OF PULVERIZATION (PRE-PULVERIZATION AND MIXING PULVERIZATION).

PROPOSED LEGEND

- (1) HOT-MIX ASPHALT SURFACE COURSE, MIX "D", IL-9.5, N50; 1 3/4"
- (2) HOT-MIX ASPHALT BINDER COURSE, IL-19.0, N50; 2 1/4"
- (3) AGGREGATE SHOULDER, TYPE B (9% MAX SLOPE) (CRUSHED GRAVEL OR CRUSHED STONE)
- (4) THERMOPLASTIC PAVEMENT MARKING, LINE
- (5) FULL-DEPTH RECLAMATION (WITH CEMENT), 12"



PROPOSED TYPICAL SECTION

BROWN ROAD (IL ROUTE 64 TO OLD LAFOX ROAD)
STA. 100+59.58 TO STA. 167+17.69

HOT-MIX ASPHALT MIXTURE REQUIREMENTS		
MIXTURE TYPE	AIR VOIDS @ Ndes	QMP
RESURFACING		
HMA SURFACE COURSE, MIX "D", N50; (IL-9.5mm); 1 3/4"	4.0% @ 50 GYR.	LR 1030-2
HMA BINDER COURSE, N50; IL-19.0mm; 2 1/4"	4.0% @ 50 GYR.	LR 1030-2
INCIDENTAL HMA SURFACING (DRIVEWAYS)		
HMA SURFACE COURSE, MIX "D", N50; (IL-9.5mm); 2"	4.0% @ 50 GYR.	LR 1030-2
QMP DESIGNATION: QUALITY CONTROL/QUALITY ASSURANCE (QC/QA) PER LR 1030-2		

THE UNIT WEIGHT TO CALCULATE ALL HMA SURFACE MIXTURE QUANTITIES IS 112 LBS/SQ YD/IN.

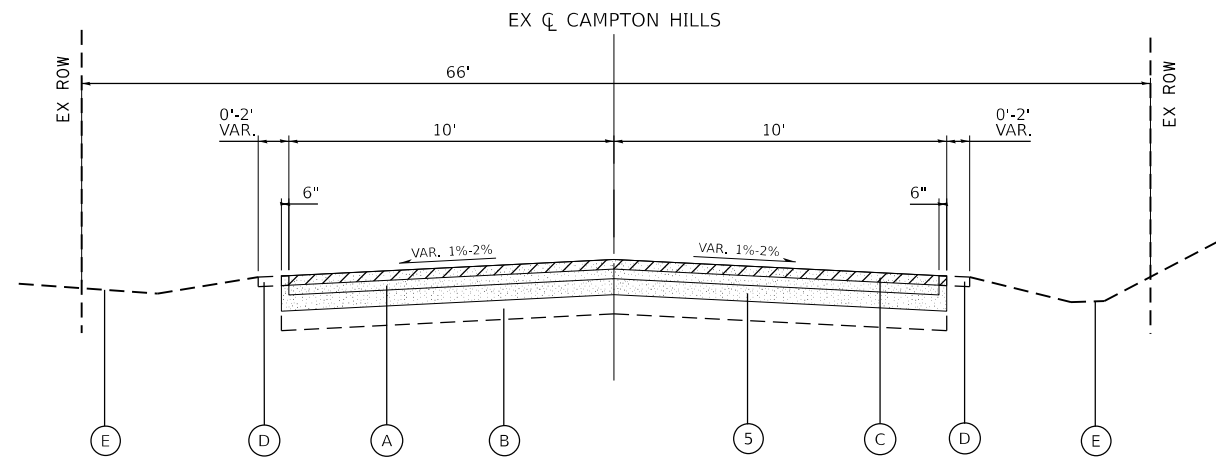
THE "AC TYPE" FOR POLYMERIZED HMA MIXES SHALL BE "SBS/SBR PG 76-22" AND FOR NON-POLYMERIZED HMA THE "AC TYPE SHALL BE "PG 64-22" UNLESS MODIFIED BY RECLAIMED MATERIAL SPECIFICATIONS.

LONGITUDINAL JOINT SEALANT SHALL BE PLACED OVER THE HMA BC IL-19.0 N50.

MODEL: typ-brown [Sheet]
FILE NAME: 230406-Sht-Typ-Brown.dgn

USER NAME = benjamin.belgrave	DESIGNED - JJS	REVISED -
	DRAWN - BJB	REVISED -
PLOT SCALE = 0.16666633' / in.	CHECKED -	REVISED -
PLOT DATE = 3/27/2026	DATE - 3/27/2026	REVISED -

F.A.U. RTE.	SECTION	COUNTY	TOTAL SHEETS	SHEET NO.
0178	24-00012-00-FP	KANE	28	7
CONTRACT NO.			61L30	
ILLINOIS		FED. AID PROJECT		



EXISTING TYPICAL SECTION

CAMPTON HILLS ROAD (ANDERSON ROAD TO TOWN HALL ROAD)
STA. 100+96.79 TO STA. 186+20.00

EXISTING LEGEND

- (A) EXISTING HOT-MIX ASPHALT PAVEMENT (SEE PAVEMENT CORES)
- (B) EXISTING AGGREGATE BASE COURSE (SEE PAVEMENT CORES)
- (C) HOT-MIX ASPHALT SURFACE REMOVAL, 3 1/2"
- (D) EXISTING EARTH/AGGREGATE SHOULDER
- (E) EXISTING GROUND

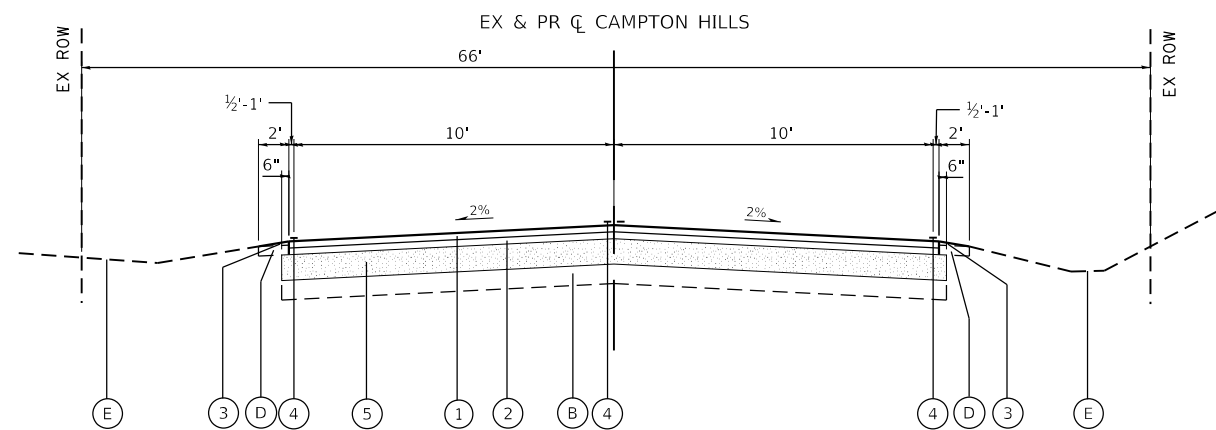
HOT-MIX ASPHALT SURFACE REMOVAL, 3 1/2" / AGGREGATE SHOULDER (TO BE PULVERIZED)

NOTES:
BASE REPAIR LOCATIONS WILL BE DETERMINED BY THE ENGINEER.

STREETS WITH ASPHALT PAVEMENT REMAINING AFTER MILLING OPERATIONS WILL REQUIRE TWO PASSES OF PULVERIZATION (PRE-PULVERIZATION AND MIXING PULVERIZATION).

PROPOSED LEGEND

- (1) HOT-MIX ASPHALT SURFACE COURSE, MIX "D", IL-9.5, N50; 1 3/4"
- (2) HOT-MIX ASPHALT BINDER COURSE, IL-19.0, N50; 2 1/4"
- (3) AGGREGATE SHOULDER, TYPE B (9% MAX SLOPE) (CRUSHED GRAVEL OR CRUSHED STONE)
- (4) THERMOPLASTIC PAVEMENT MARKING, LINE
- (5) FULL-DEPTH RECLAMATION (WITH CEMENT), 12"



PROPOSED TYPICAL SECTION

CAMPTON HILLS ROAD (ANDERSON ROAD TO TOWN HALL ROAD)
STA. 100+96.79 TO STA. 186+20.00

**STATE OF ILLINOIS
DEPARTMENT OF TRANSPORTATION**

**TYPICAL SECTIONS
CAMPTON HILLS ROAD**

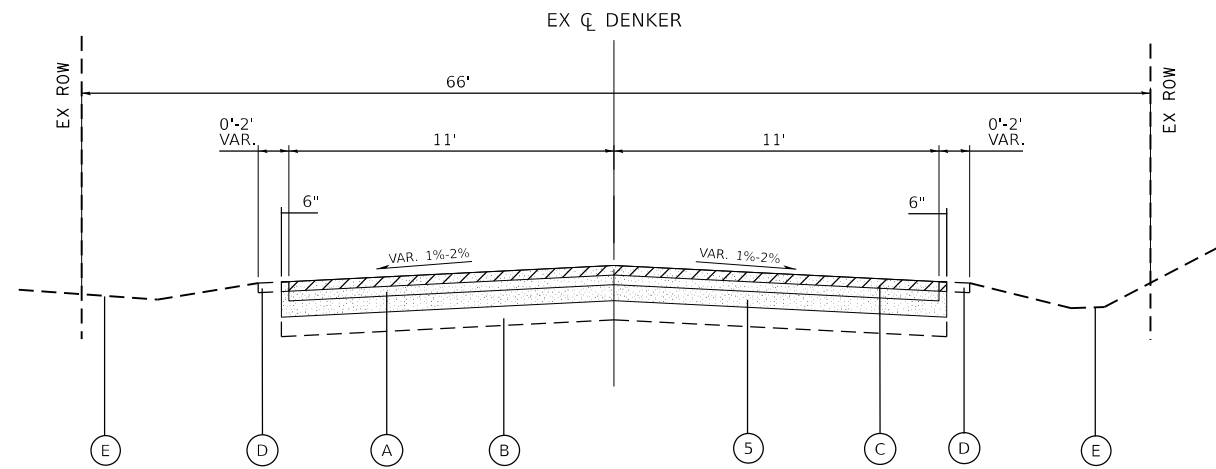
F.A.U. RTE.	SECTION	COUNTY	TOTAL SHEETS	SHEET NO.
0117	24-00012-00-FP	KANE	28	8
CONTRACT NO.			61L30	
ILLINOIS		FED. AID PROJECT		

SCALE: N.T.S. SHEET 1 OF 1 SHEETS STA. TO STA.

MODEL: Typ-Campton (Sheet)
FILE NAME: 2304066-Shr-Typ-Campton.dgn

HRGreen.com
Illinois Professional Design Firm
184-001322

USER NAME = benjamin.belgrave	DESIGNED - JJS	REVISED -
	DRAWN - BJB	REVISED -
PLOT SCALE = 0.16666633' / in.	CHECKED -	REVISED -
PLOT DATE = 3/27/2026	DATE - 3/27/2026	REVISED -



EXISTING TYPICAL SECTION

DENKER ROAD (BOLCUM ROAD TO SILVER GLEN ROAD)
STA. 500+68.40 TO STA. 575+24.92

EXISTING LEGEND

- (A) EXISTING HOT-MIX ASPHALT PAVEMENT (SEE PAVEMENT CORES)
- (B) EXISTING AGGREGATE BASE COURSE (SEE PAVEMENT CORES)
- (C) HOT-MIX ASPHALT SURFACE REMOVAL, 3 1/2"
- (D) EXISTING EARTH/AGGREGATE SHOULDER
- (E) EXISTING GROUND

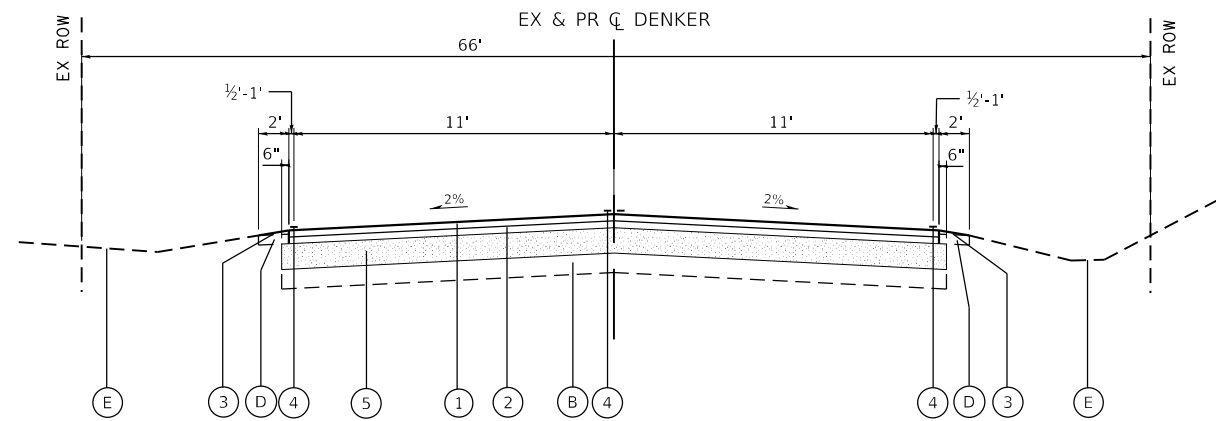
HOT-MIX ASPHALT SURFACE REMOVAL, 3 1/2" / AGGREGATE SHOULDER (TO BE PULVERIZED)

NOTES:
BASE REPAIR LOCATIONS WILL BE DETERMINED BY THE ENGINEER.

STREETS WITH ASPHALT PAVEMENT REMAINING AFTER MILLING OPERATIONS WILL REQUIRE TWO PASSES OF PULVERIZATION (PRE-PULVERIZATION AND MIXING PULVERIZATION).

PROPOSED LEGEND

- (1) HOT-MIX ASPHALT SURFACE COURSE, MIX "D", IL-9.5, N50; 1 3/4"
- (2) HOT-MIX ASPHALT BINDER COURSE, IL-19.0, N50; 2 1/4"
- (3) AGGREGATE SHOULDER, TYPE B (9% MAX SLOPE) (CRUSHED GRAVEL OR CRUSHED STONE)
- (4) THERMOPLASTIC PAVEMENT MARKING, LINE
- (5) FULL-DEPTH RECLAMATION (WITH CEMENT), 12"



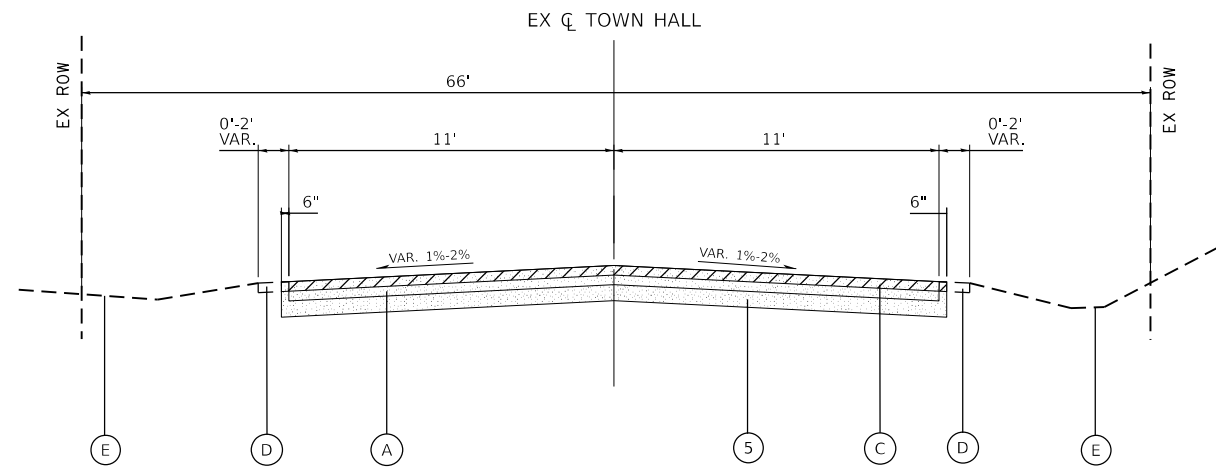
PROPOSED TYPICAL SECTION

DENKER ROAD (BOLCUM ROAD TO SILVER GLEN ROAD)
STA. 500+68.40 TO STA. 575+24.92

MODEL: I:\p-denker (Sheet)
FILE NAME: 2304066-shr-1-p-denker.dgn

USER NAME = benjamin.belgrave	DESIGNED - JJS	REVISED -
	DRAWN - BJB	REVISED -
PLOT SCALE = 0.16666633' / in.	CHECKED -	REVISED -
PLOT DATE = 3/27/2026	DATE - 3/27/2026	REVISED -

F.A.U. RTE.	SECTION	COUNTY	TOTAL SHEETS	SHEET NO.
0026	24-00012-00-FP	KANE	28	9
CONTRACT NO.			61L30	
ILLINOIS		FED. AID PROJECT		



EXISTING TYPICAL SECTION

TOWN HALL ROAD (IL ROUTE 64 TO CAMPTON HILL ROAD)
STA. 10+48.25 TO STA. 52+92.56

EXISTING LEGEND

- (A) EXISTING HOT-MIX ASPHALT PAVEMENT (SEE PAVEMENT CORES)
- (B) EXISTING AGGREGATE BASE COURSE (SEE PAVEMENT CORES)
- (C) HOT-MIX ASPHALT SURFACE REMOVAL, 3 1/2"
- (D) EXISTING EARTH/AGGREGATE SHOULDER
- (E) EXISTING GROUND

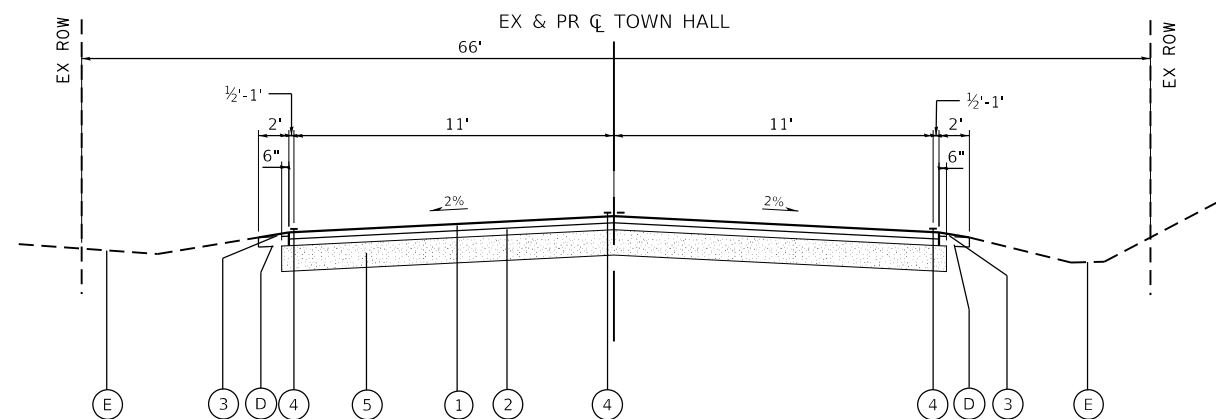
HOT-MIX ASPHALT SURFACE REMOVAL, 3 1/2" / AGGREGATE SHOULDER (TO BE PULVERIZED)

NOTES:
BASE REPAIR LOCATIONS WILL BE DETERMINED BY THE ENGINEER.

STREETS WITH ASPHALT PAVEMENT REMAINING AFTER MILLING OPERATIONS WILL REQUIRE TWO PASSES OF PULVERIZATION (PRE-PULVERIZATION AND MIXING PULVERIZATION).

PROPOSED LEGEND

- (1) HOT-MIX ASPHALT SURFACE COURSE, MIX "D", IL-9.5, N50; 1 3/4"
- (2) HOT-MIX ASPHALT BINDER COURSE, IL-19.0, N50; 2 1/4"
- (3) AGGREGATE SHOULDER, TYPE B (9% MAX SLOPE) (CRUSHED GRAVEL OR CRUSHED STONE)
- (4) THERMOPLASTIC PAVEMENT MARKING, LINE
- (5) FULL-DEPTH RECLAMATION (WITH CEMENT), 12"



PROPOSED TYPICAL SECTION

TOWN HALL ROAD (IL ROUTE 64 TO CAMPTON HILL ROAD)
STA. 10+48.25 TO STA. 52+92.56

MODEL: typ-townhall (Sheet)
FILE NAME: 2304066-Str-Typ-TownHall.dgn

USER NAME = benjamin.belgrave	DESIGNED - JJS	REVISED -
	DRAWN - BJB	REVISED -
PLOT SCALE = 0.16666633' / in.	CHECKED -	REVISED -
PLOT DATE = 3/27/2026	DATE - 3/27/2026	REVISED -

F.A.U. RTE.	SECTION	COUNTY	TOTAL SHEETS	SHEET NO.
0226	24-00012-00-FP	KANE	28	10
CONTRACT NO.			61L30	
ILLINOIS		FED. AID PROJECT		

PAVEMENT AREA		BROWN ROAD
AREA (SQ FT)		158,457
AREA (SQ YD)		17,607
REMOVAL AND DISPOSAL OF UNSUITABLE MATERIAL	CU YD	59
TOPSOIL FURNISH AND PLACE, 4"	SQ YD	1,110
SEEDING, CLASS 2A	ACRE	0.23
MULCH, METHOD 3	ACRE	0.23
AGGREGATE SUBGRADE IMPROVEMENT 12"	SQ YD	177
AGGREGATE BASE COURSE, TYPE B 4"	SQ YD	17
CEMENT	100 WT	12,155
BITUMINOUS MATERIALS (PRIME COAT)	POUND	40,616
BITUMINOUS MATERIALS (TACK COAT)	POUND	3,996
LONGITUDINAL JOINT SEALANT	FOOT	6,659
HOT-MIX ASPHALT SURFACE REMOVAL - BUTT JOINT	SQ YD	101
HOT-MIX ASPHALT BINDER COURSE, IL-19.0, N50	TON	2,238
HOT-MIX ASPHALT SURFACE COURSE, IL-9.5, MIX "D", N50	TON	1,774
BITUMINOUS MATERIALS (TACK COAT)	POUND	125
INCIDENTAL HOT-MIX ASPHALT SURFACING	TON	32
PORTLAND CEMENT CONCRETE SIDEWALK 5 INCH	SQ FT	147
DETECTABLE WARNINGS	SQ FT	42
HOT-MIX ASPHALT SURFACE REMOVAL, 3 1/2"	SQ YD	17,607
SIDEWALK REMOVAL	SQ FT	147
AGGREGATE SHOULDERS, TYPE B	TON	314
MOBILIZATION	L SUM	0.25
TRAFFIC CONTROL AND PROTECTION, STANDARD 701201	L SUM	0.25
TRAFFIC CONTROL AND PROTECTION, STANDARD 701306	L SUM	0.25
TRAFFIC CONTROL AND PROTECTION, STANDARD 701501	L SUM	0.25
TRAFFIC CONTROL AND PROTECTION, STANDARD 701801	L SUM	1
SHORT TERM PAVEMENT MARKING	FOOT	1,284
SHORT TERM PAVEMENT MARKING REMOVAL	SQ FT	428
THERMOPLASTIC PAVEMENT MARKING - LINE 4"	FOOT	24,841
THERMOPLASTIC PAVEMENT MARKING - LINE 6"	FOOT	44
THERMOPLASTIC PAVEMENT MARKING - LINE 8"	FOOT	535
THERMOPLASTIC PAVEMENT MARKING - LINE 12"	FOOT	67
THERMOPLASTIC PAVEMENT MARKING - LINE 24"	FOOT	42
FULL-DEPTH RECLAMATION, 12.0"	SQ YD	18,316
REMOVE AND REINSTALL BRICK PAVER	SQ FT	54
PREPARATION OF BASE (SPECIAL)	SQ YD	152
HOT-MIX ASPHALT SURFACE REMOVAL (SPECIAL)	SQ YD	73
TEMPORARY INFORMATION SIGNING	SQ FT	52

PAVEMENT AREA		DENKER ROAD
AREA (SQ FT)		178,459
AREA (SQ YD)		19,829
REMOVAL AND DISPOSAL OF UNSUITABLE MATERIAL	CU YD	67
TOPSOIL FURNISH AND PLACE, 4"	SQ YD	1,243
SEEDING, CLASS 2A	ACRE	0.26
MULCH, METHOD 3	ACRE	0.26
AGGREGATE SUBGRADE IMPROVEMENT 12"	SQ YD	199
CEMENT	100 WT	13,485
BITUMINOUS MATERIALS (PRIME COAT)	POUND	44,831
BITUMINOUS MATERIALS (TACK COAT)	POUND	4,462
LONGITUDINAL JOINT SEALANT	FOOT	7,457
HOT-MIX ASPHALT SURFACE REMOVAL - BUTT JOINT	SQ YD	220
HOT-MIX ASPHALT BINDER COURSE, IL-19.0, N50	TON	2,499
HOT-MIX ASPHALT SURFACE COURSE, IL-9.5, MIX "D", N50	TON	1,955
BITUMINOUS MATERIALS (TACK COAT)	POUND	42
INCIDENTAL HOT-MIX ASPHALT SURFACING	TON	11
HOT-MIX ASPHALT SURFACE REMOVAL, 3 1/2"	SQ YD	19,829
AGGREGATE SHOULDERS, TYPE B	TON	357
STRONG POST GUARDRAIL ATTACHED TO CULVERT	FOOT	50
TRAFFIC BARRIER TERMINAL, TYPE 1 (SPECIAL) TANGENT	EACH	4
GUARDRAIL REMOVAL	FOOT	506
MOBILIZATION	L SUM	0.25
TRAFFIC CONTROL AND PROTECTION, STANDARD 701201	L SUM	0.25
TRAFFIC CONTROL AND PROTECTION, STANDARD 701306	L SUM	0.25
TRAFFIC CONTROL AND PROTECTION, STANDARD 701501	L SUM	0.25
SHORT TERM PAVEMENT MARKING	FOOT	1,394
SHORT TERM PAVEMENT MARKING REMOVAL	SQ FT	465
TERMINAL MARKER - DIRECT APPLIED	EACH	4
THERMOPLASTIC PAVEMENT MARKING - LINE 4"	FOOT	27,468
THERMOPLASTIC PAVEMENT MARKING - LINE 8"	FOOT	534
THERMOPLASTIC PAVEMENT MARKING - LINE 24"	FOOT	63
GUARDRAIL REFLECTORS, TYPE A	EACH	6
FULL-DEPTH RECLAMATION, 12.0"	SQ YD	20,624
REMOVE AND REINSTALL BRICK PAVER	SQ FT	171
HOT-MIX ASPHALT SURFACE REMOVAL (SPECIAL)	SQ YD	50
TEMPORARY INFORMATION SIGNING	SQ FT	52

PAVEMENT AREA		CAMPTON HILLS ROAD
AREA (SQ FT)		182,930
AREA (SQ YD)		20,326
REMOVAL AND DISPOSAL OF UNSUITABLE MATERIAL	CU YD	68
TOPSOIL FURNISH AND PLACE, 4"	SQ YD	1,421
SEEDING, CLASS 2A	ACRE	0.30
MULCH, METHOD 3	ACRE	0.30
AGGREGATE SUBGRADE IMPROVEMENT 12"	SQ YD	204
CEMENT	100 WT	9,425
BITUMINOUS MATERIALS (PRIME COAT)	POUND	46,386
BITUMINOUS MATERIALS (TACK COAT)	POUND	4,574
LONGITUDINAL JOINT SEALANT	FOOT	8,524
HOT-MIX ASPHALT SURFACE REMOVAL - BUTT JOINT	SQ YD	119
HOT-MIX ASPHALT BINDER COURSE, IL-19.0, N50	TON	2,562
HOT-MIX ASPHALT SURFACE COURSE, IL-9.5, MIX "D", N50	TON	2,026
BITUMINOUS MATERIALS (TACK COAT)	POUND	131
INCIDENTAL HOT-MIX ASPHALT SURFACING	TON	34
HOT-MIX ASPHALT SURFACE REMOVAL, 3 1/2"	SQ YD	20,326
AGGREGATE SHOULDERS, TYPE B	TON	406
MOBILIZATION	L SUM	0.25
TRAFFIC CONTROL AND PROTECTION, STANDARD 701201	L SUM	0.25
TRAFFIC CONTROL AND PROTECTION, STANDARD 701306	L SUM	0.25
TRAFFIC CONTROL AND PROTECTION, STANDARD 701501	L SUM	0.25
SHORT TERM PAVEMENT MARKING	FOOT	1,109
SHORT TERM PAVEMENT MARKING REMOVAL	SQ FT	370
THERMOPLASTIC PAVEMENT MARKING - LINE 4"	FOOT	27,783
THERMOPLASTIC PAVEMENT MARKING - LINE 24"	FOOT	85
FULL-DEPTH RECLAMATION, 12.0"	SQ YD	21,235
HOT-MIX ASPHALT SURFACE REMOVAL (SPECIAL)	SQ YD	77
TEMPORARY INFORMATION SIGNING	SQ FT	52

PAVEMENT AREA		TOWN HALL ROAD
AREA (SQ FT)		97,389
AREA (SQ YD)		10,821
REMOVAL AND DISPOSAL OF UNSUITABLE MATERIAL	CU YD	37
TOPSOIL FURNISH AND PLACE, 4"	SQ YD	708
SEEDING, CLASS 2A	ACRE	0.15
MULCH, METHOD 3	ACRE	0.15
AGGREGATE SUBGRADE IMPROVEMENT 12"	SQ YD	109
CEMENT	100 WT	7,360
BITUMINOUS MATERIALS (PRIME COAT)	POUND	24,893
BITUMINOUS MATERIALS (TACK COAT)	POUND	2,435
LONGITUDINAL JOINT SEALANT	FOOT	4,245
HOT-MIX ASPHALT SURFACE REMOVAL - BUTT JOINT	SQ YD	67
HOT-MIX ASPHALT BINDER COURSE, IL-19.0, N50	TON	1,364
HOT-MIX ASPHALT SURFACE COURSE, IL-9.5, MIX "D", N50	TON	1,089
BITUMINOUS MATERIALS (TACK COAT)	POUND	98
INCIDENTAL HOT-MIX ASPHALT SURFACING	TON	25
HOT-MIX ASPHALT SURFACE REMOVAL, 3 1/2"	SQ YD	10,821
AGGREGATE SHOULDERS, TYPE B	TON	197
MOBILIZATION	L SUM	0.25
TRAFFIC CONTROL AND PROTECTION, STANDARD 701201	L SUM	0.25
TRAFFIC CONTROL AND PROTECTION, STANDARD 701306	L SUM	0.25
TRAFFIC CONTROL AND PROTECTION, STANDARD 701501	L SUM	0.25
SHORT TERM PAVEMENT MARKING	FOOT	793
SHORT TERM PAVEMENT MARKING REMOVAL	SQ FT	265
THERMOPLASTIC PAVEMENT MARKING - LINE 4"	FOOT	15,950
FULL-DEPTH RECLAMATION, 12.0"	SQ YD	11,262
HOT-MIX ASPHALT SURFACE REMOVAL (SPECIAL)	SQ YD	59
TEMPORARY INFORMATION SIGNING	SQ FT	52

MODEL: Schedule-1 (Sheet)
FILE NAME: 2304066-SH-Schedule.dgn



USER NAME = benjamin.belgrave	DESIGNED - JJS	REVISED -
	DRAWN - BJB	REVISED -
PLOT SCALE = 0.16666633' / In.	CHECKED -	REVISED -
PLOT DATE = 3/27/2026	DATE - 3/27/2026	REVISED -

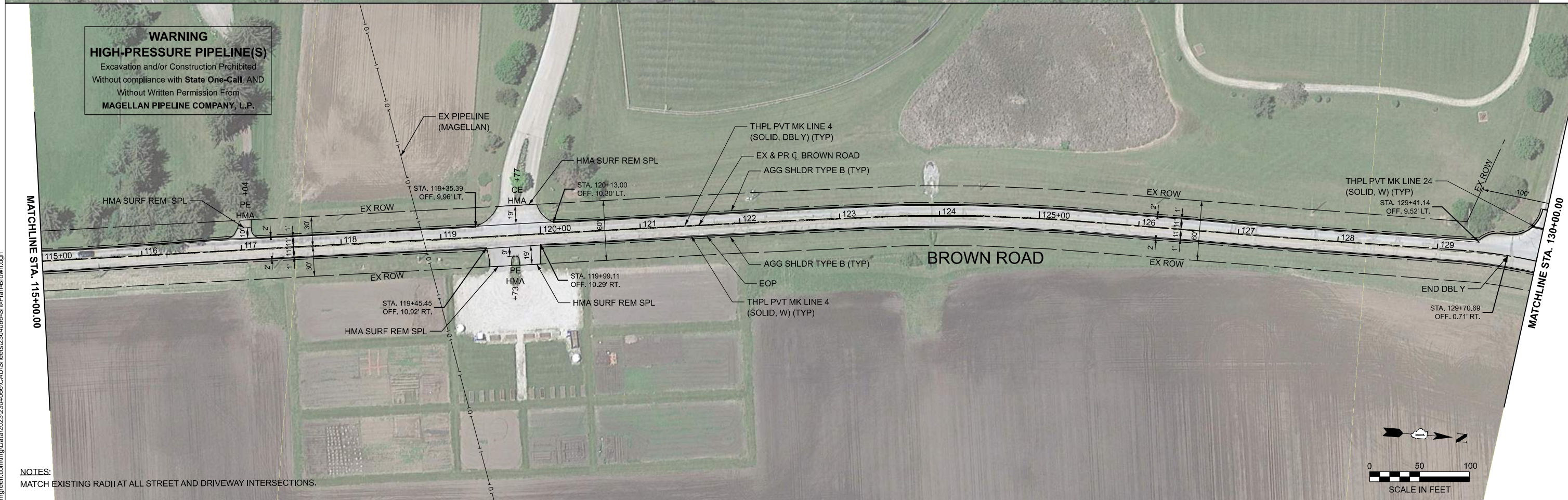
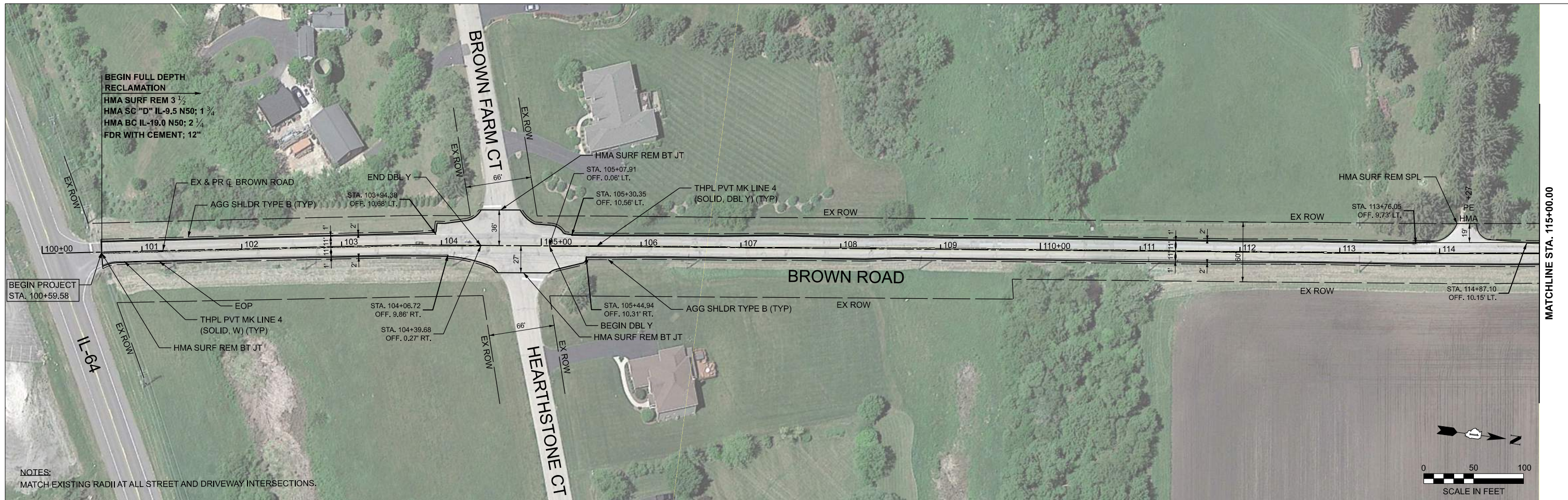
**STATE OF ILLINOIS
DEPARTMENT OF TRANSPORTATION**

SCHEDULE OF QUANTITIES

SCALE: SHEET 1 OF 1 SHEETS STA. TO STA.

F.A.U. RTE.	SECTION	COUNTY	TOTAL SHEETS	SHEET NO.
*	24-00012-00-FP	KANE	28	11
CONTRACT NO.			61L30	
ILLINOIS		FED. AID PROJECT		

*0178, 0117, 0026, 0226



MODEL: Pr_C1_Brown - plan-1 (Sheet)
 FILE NAME: \hrgreen.com\hrg\Draws\2023\2304066\CAD\Sheets\2304066-SHA-Plan-Brown.dgn

HRGreen.com
 Illinois Professional Design Firm
 # 184-001322

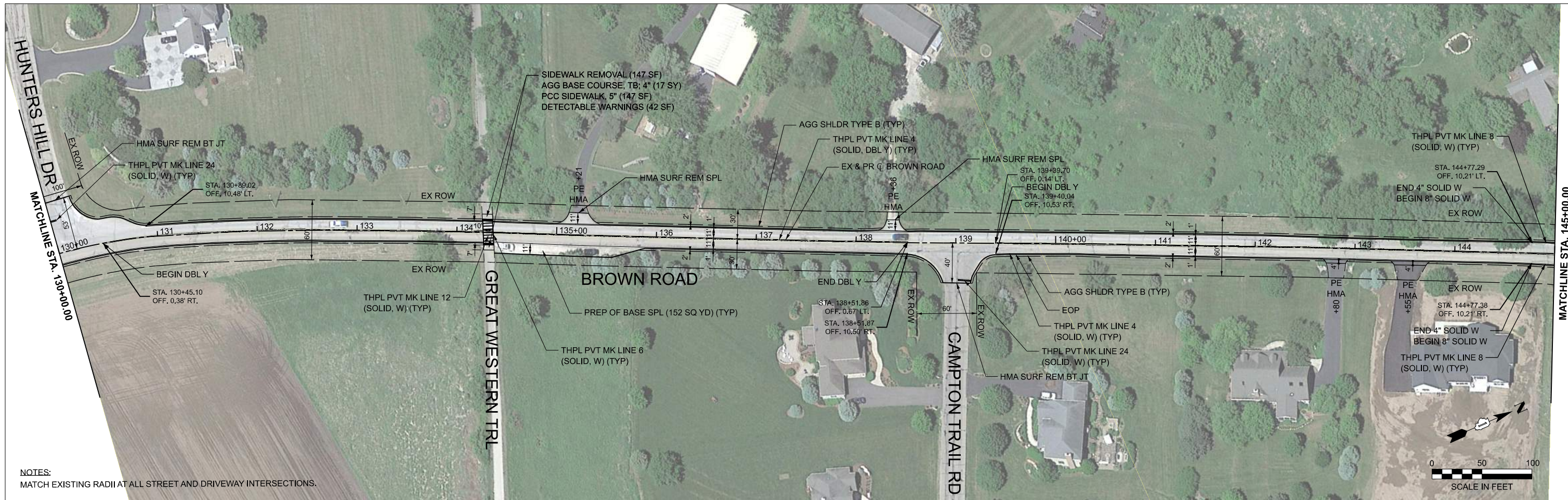
USER NAME = benjamin.belgrave	DESIGNED - JJS	REVISED -
	DRAWN - BJB	REVISED -
PLOT SCALE = 0.16666633' / in.	CHECKED -	REVISED -
PLOT DATE = 3/27/2026	DATE - 3/27/2026	REVISED -

**STATE OF ILLINOIS
 DEPARTMENT OF TRANSPORTATION**

**RESURFACING PLAN
 BROWN ROAD**

SCALE: 1"=50' SHEET 1 OF 3 SHEETS STA. 100+00.00 TO STA. 130+00.00

F.A.U. RTE.	SECTION	COUNTY	TOTAL SHEETS	SHEET NO.
0178	24-00012-00-FP	KANE	28	12
CONTRACT NO. 61L30				
ILLINOIS FED. AID PROJECT				



NOTES:
MATCH EXISTING RADII AT ALL STREET AND DRIVEWAY INTERSECTIONS.



NOTES:
MATCH EXISTING RADII AT ALL STREET AND DRIVEWAY INTERSECTIONS.

MODEL: Pr_C1_Brown - plan-3 (Sheet)
FILE NAME: \\hrgreen.com\hrgreen\cadd\2023\23040666\CAD\Sheets\23040666-SHA-Plan-Brown.dgn



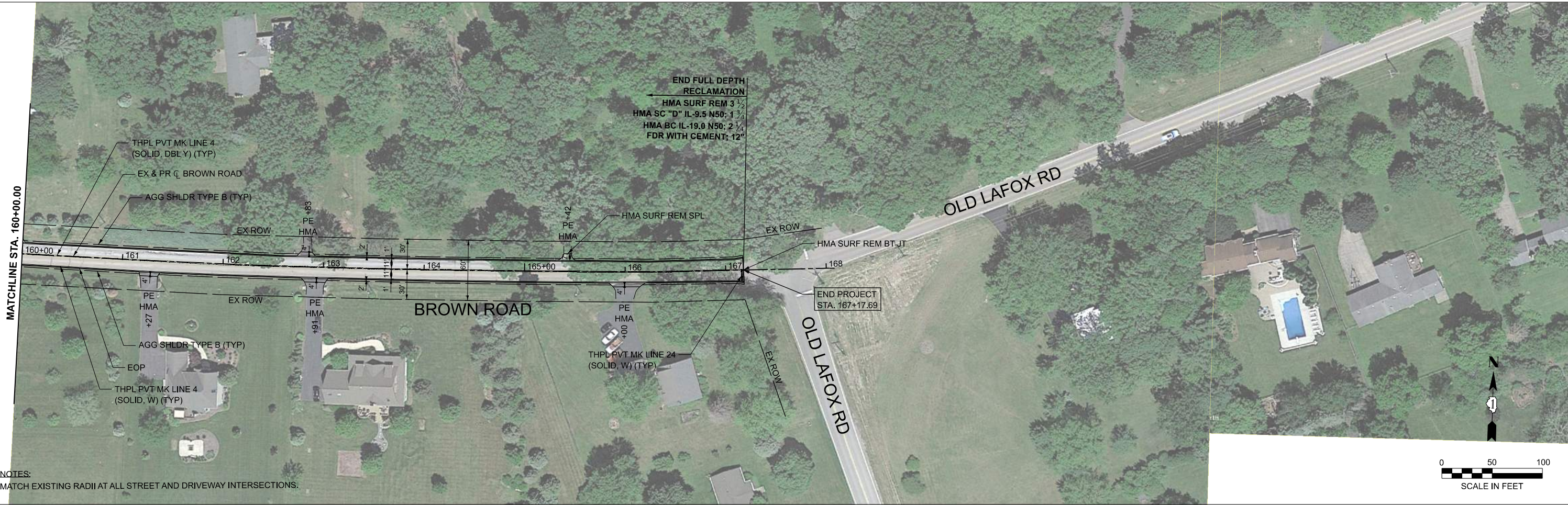
USER NAME =	benjamin.belgrave	DESIGNED -	JJS	REVISED -	
DRAWN -	BJB	REVISOR -		REVISOR -	
PLOT SCALE =	0.16666633' / in.	CHECKED -		REVISOR -	
PLOT DATE =	3/27/2026	DATE -	3/27/2026	REVISOR -	

**STATE OF ILLINOIS
DEPARTMENT OF TRANSPORTATION**

**RESURFACING PLAN
BROWN ROAD**

SCALE: 1"=50' SHEET 2 OF 3 SHEETS STA. 130+00.00 TO STA. 160+00.00

F.A.U. RTE.	SECTION	COUNTY	TOTAL SHEETS	SHEET NO.
0178	24-00012-00-FP	KANE	28	13
CONTRACT NO. 61L30				
ILLINOIS FED. AID PROJECT				



NOTES:
MATCH EXISTING RADII AT ALL STREET AND DRIVEWAY INTERSECTIONS.

MODEL: Pr_C1_Brown - plan-5 (Sheet)
FILE NAME: \hrgreen.com\hrg\Data\2023\2304066\CAD\Sheets\2304066-Sht-Plan-Brown.dgn



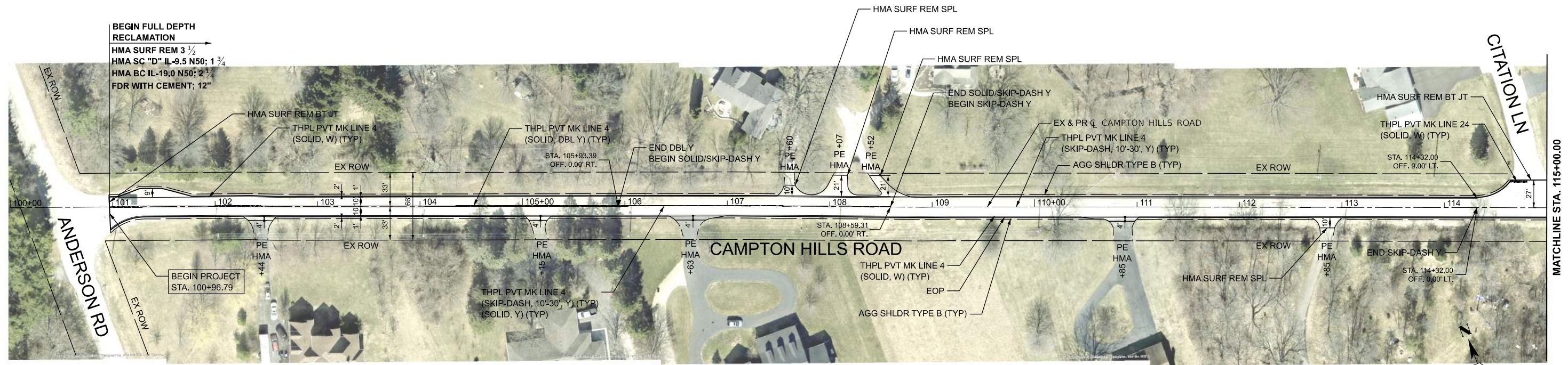
USER NAME = benjamin.belgrave	DESIGNED - JJS	REVISED -
DRAWN - BJB	REVISED -	
PLOT SCALE = 0.16666633' / in.	CHECKED -	REVISED -
PLOT DATE = 3/27/2026	DATE - 3/27/2026	REVISED -

**STATE OF ILLINOIS
DEPARTMENT OF TRANSPORTATION**

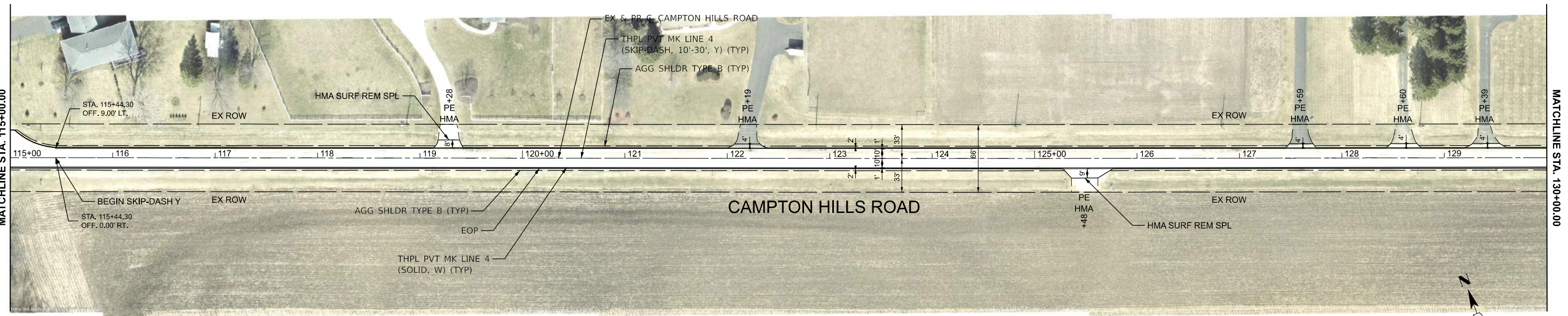
**RESURFACING PLAN
BROWN ROAD**

SCALE: 1"=50' SHEET 3 OF 3 SHEETS STA. 160+00.00 TO STA. 175+00.00

F.A.U. RTE.	SECTION	COUNTY	TOTAL SHEETS	SHEET NO.
0178	24-00012-00-FP	KANE	28	14
CONTRACT NO. 61L30			ILLINOIS FED. AID PROJECT	



NOTES:
MATCH EXISTING RADII AT ALL STREET AND DRIVEWAY INTERSECTIONS.



NOTES:
MATCH EXISTING RADII AT ALL STREET AND DRIVEWAY INTERSECTIONS.

MODEL: EXCL Campton - Plan-1 (Sheet)
FILE NAME: \\rgreen.com\hrg\Drawings\2023\23040666-Plan-1-Campton.dgn



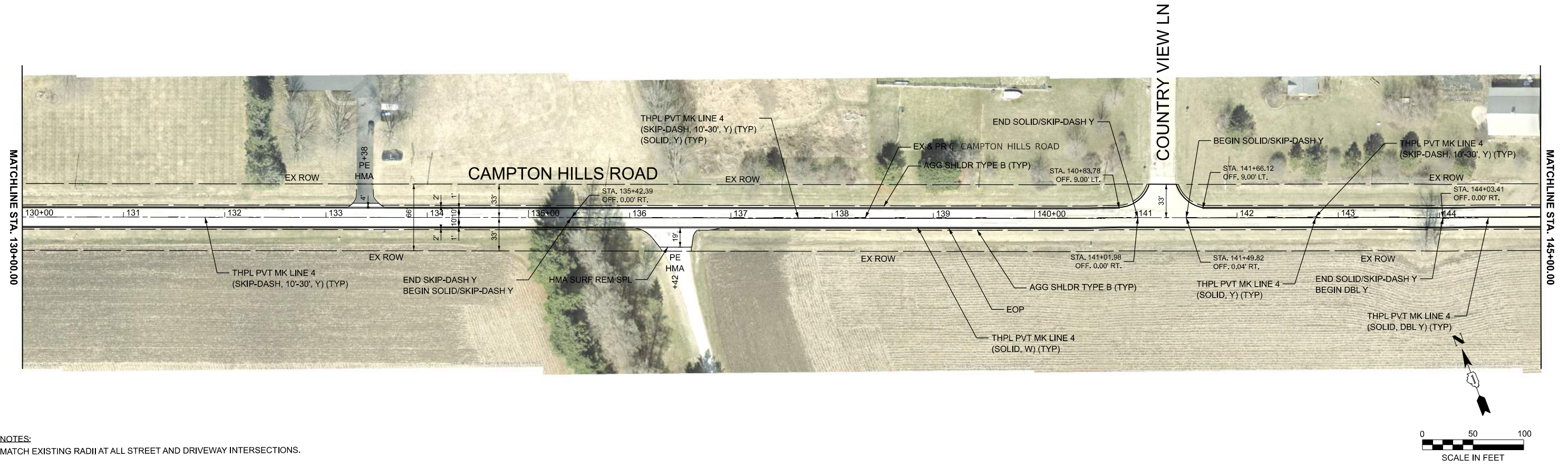
USER NAME = benjamin.belgrave	DESIGNED - JJS	REVISED -
DRAWN - BJB	REVISED -	
PLOT SCALE = 0.16666633' / in.	CHECKED -	REVISED -
PLOT DATE = 3/27/2026	DATE - 3/27/2026	REVISED -

STATE OF ILLINOIS
DEPARTMENT OF TRANSPORTATION

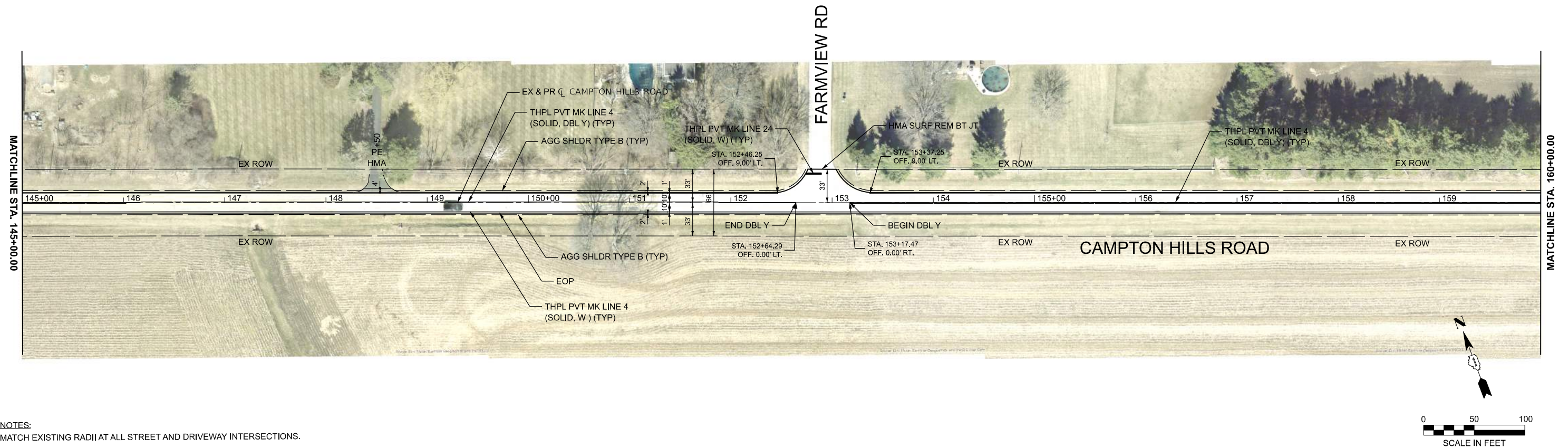
RESURFACING PLAN
CAMPTON HILLS ROAD

SCALE: 1"=50' SHEET 1 OF 3 SHEETS STA. 100+00.00 TO STA. 130+00.00

F.A.U. RTE.	SECTION	COUNTY	TOTAL SHEETS	SHEET NO.
0117	24-00012-00-FP	KANE	28	15
CONTRACT NO. 61L30			ILLINOIS FED. AID PROJECT	



NOTES:
MATCH EXISTING RADII AT ALL STREET AND DRIVEWAY INTERSECTIONS.



NOTES:
MATCH EXISTING RADII AT ALL STREET AND DRIVEWAY INTERSECTIONS.



MODEL: EXCL Campton - plan-3 (Sheet)
FILE NAME: \\hrgreen.com\hrg\Draw\2023\23040666\CAD\Sheets\23040666-SHA-Plan-Campton.dgn



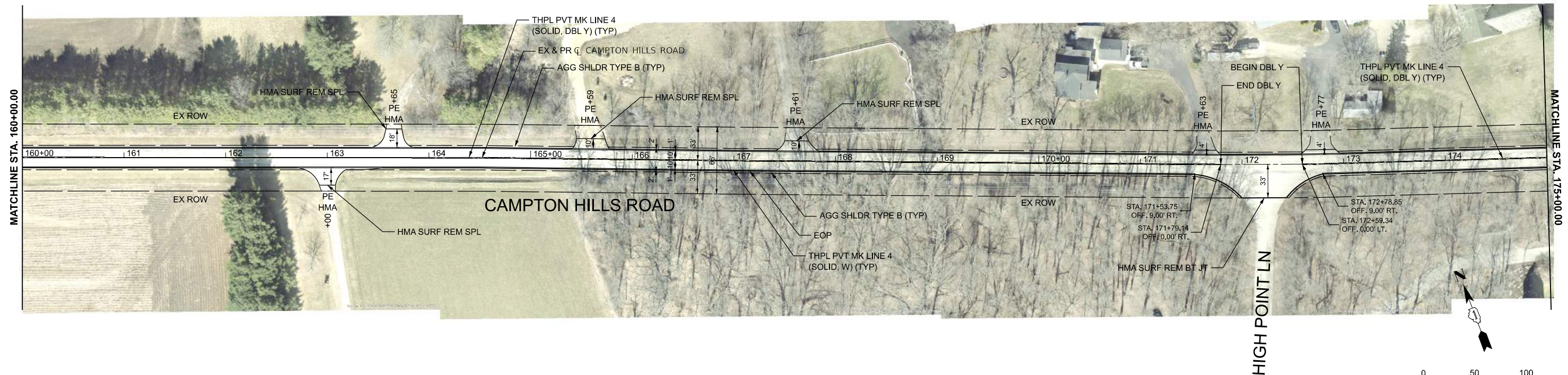
USER NAME = benjamin.belgrave	DESIGNED - JJS	REVISED -
PLOT SCALE = 0.16666633' / in.	DRAWN - BJB	REVISED -
PLOT DATE = 3/27/2026	CHECKED -	REVISED -
	DATE - 3/27/2026	REVISED -

STATE OF ILLINOIS
DEPARTMENT OF TRANSPORTATION

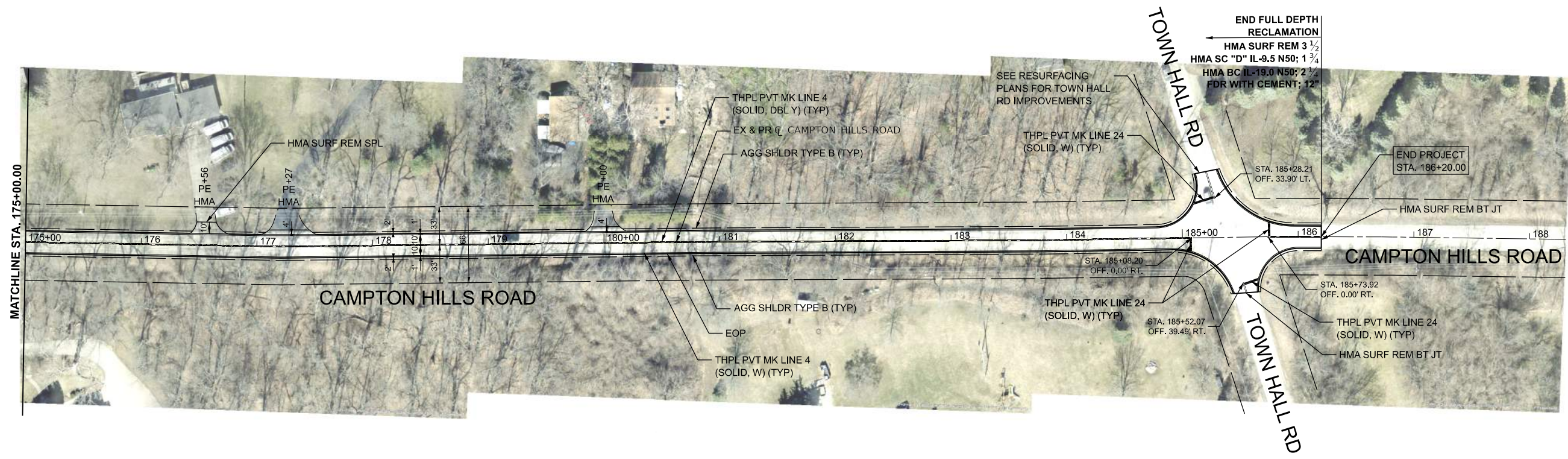
RESURFACING PLAN
CAMPTON HILLS ROAD

SCALE: 1"=50' SHEET 2 OF 3 SHEETS STA. 130+00.00 TO STA. 160+00.00

F.A.U. RTE.	SECTION	COUNTY	TOTAL SHEETS	SHEET NO.
0117	24-00012-00-FP	KANE	28	16
CONTRACT NO. 61L30				
ILLINOIS FED. AID PROJECT				



NOTES:
MATCH EXISTING RADII AT ALL STREET AND DRIVEWAY INTERSECTIONS.



NOTES:
MATCH EXISTING RADII AT ALL STREET AND DRIVEWAY INTERSECTIONS.

MODEL: EXCL Campton - plan-5 (Sheet)
FILE NAME: \\pgreen.com\hrg\Drawings\2023\2304066\CAD\Sheets\2304066-SHA-Plan-Campton.dgn



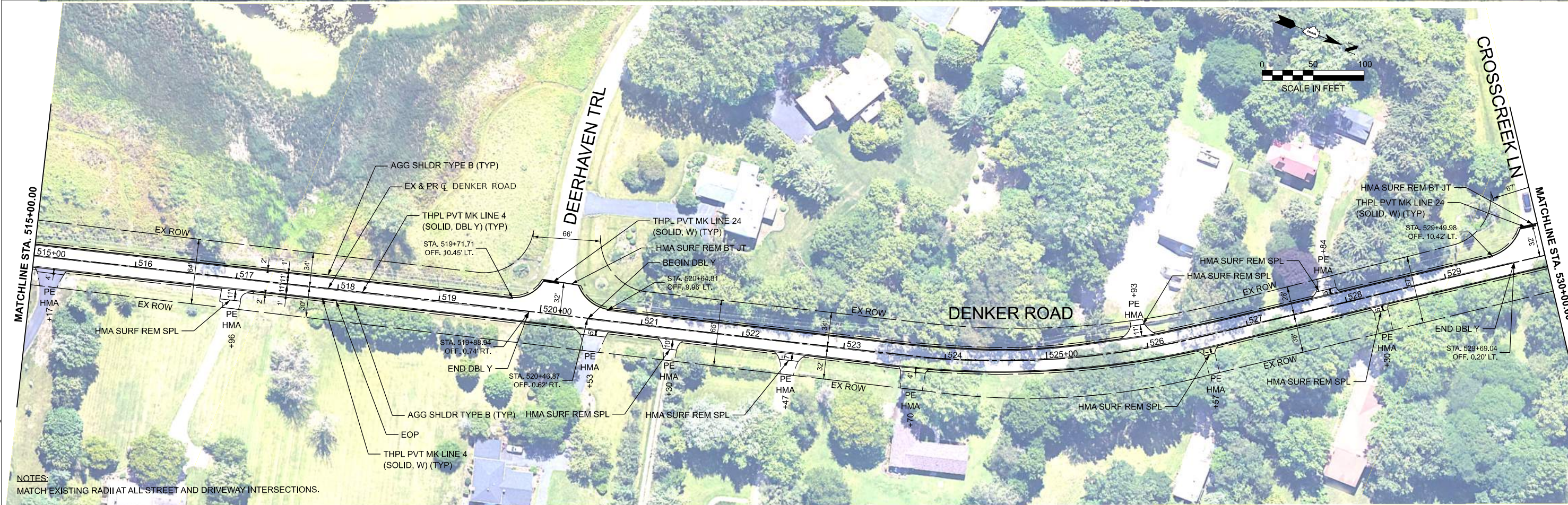
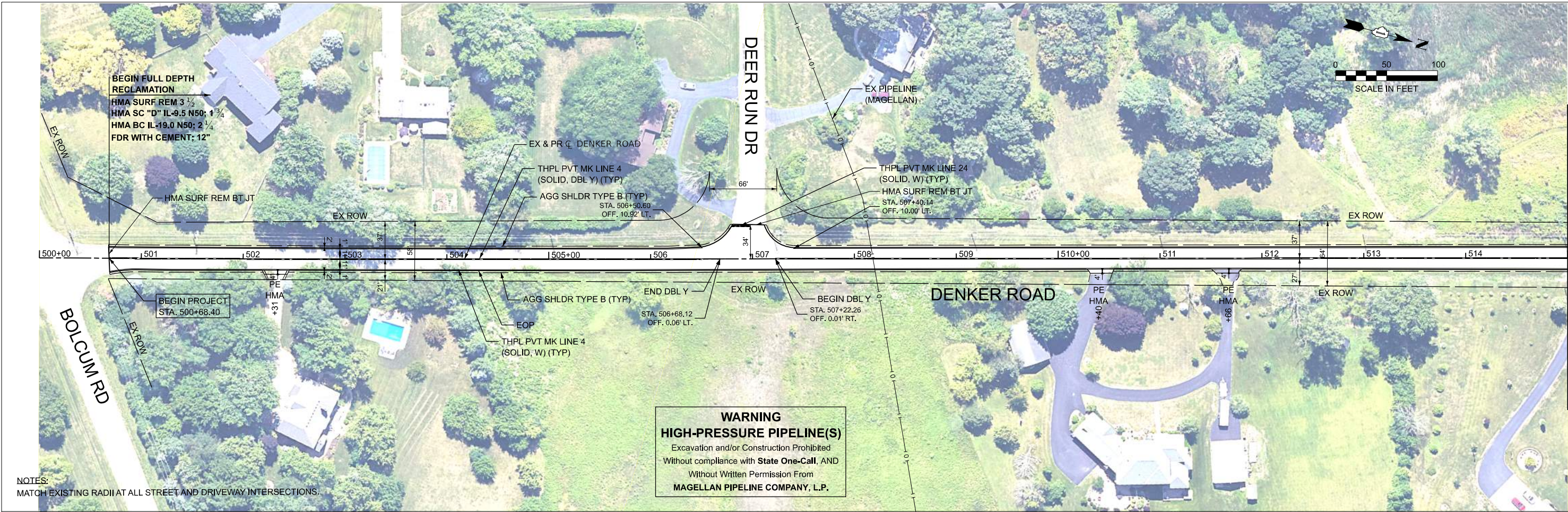
USER NAME = benjamin.belgrave	DESIGNED - JJS	REVISED -
DRAWN - BJB	REVISED -	
PLOT SCALE = 0.16666633' / in.	CHECKED -	REVISED -
PLOT DATE = 3/27/2026	DATE - 3/27/2026	REVISED -

**STATE OF ILLINOIS
DEPARTMENT OF TRANSPORTATION**

**RESURFACING PLAN
CAMPTON HILLS ROAD**

SCALE: 1"=50' SHEET 3 OF 3 SHEETS STA. 160+00.00 TO STA. 190+00.00

F.A.U. RTE.	SECTION	COUNTY	TOTAL SHEETS	SHEET NO.
0117	24-00012-00-FP	KANE	28	17
CONTRACT NO.			61L30	
ILLINOIS FED. AID PROJECT				



MODEL: Pr_CLDenker - Denker Plan 1 (Sheet)
FILE NAME: 2306066-Sth-Plan-Denker.dgn



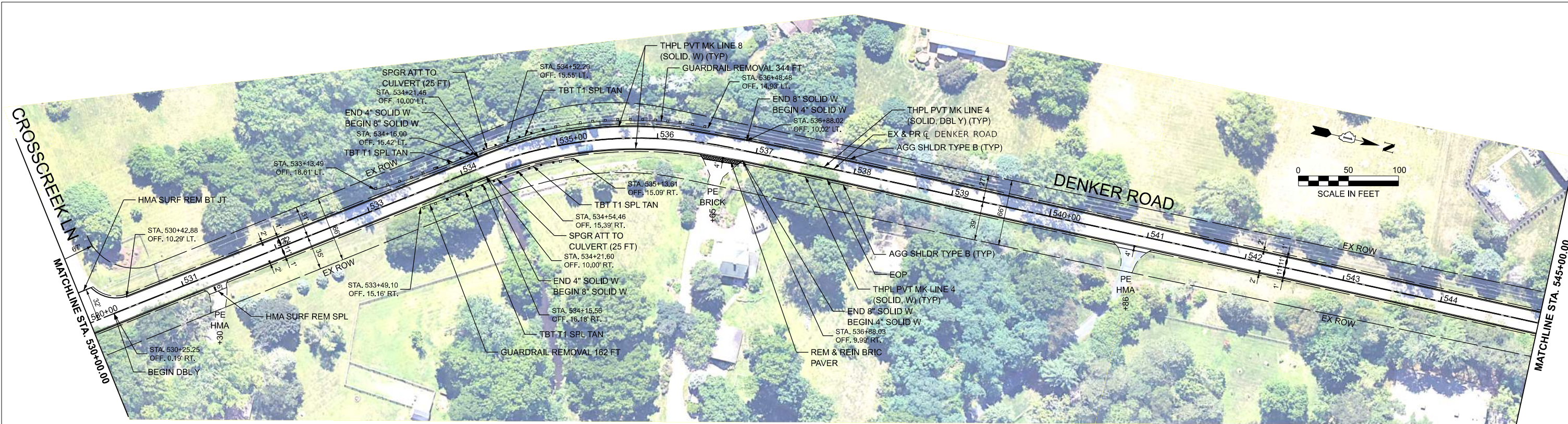
USER NAME = benjamin.belgrave	DESIGNED - JJS	REVISED -
PLOT SCALE = 0.16666633 / in.	DRAWN - BJB	REVISED -
PLOT DATE = 3/27/2026	CHECKED -	REVISED -
	DATE - 3/27/2026	REVISED -

STATE OF ILLINOIS
DEPARTMENT OF TRANSPORTATION

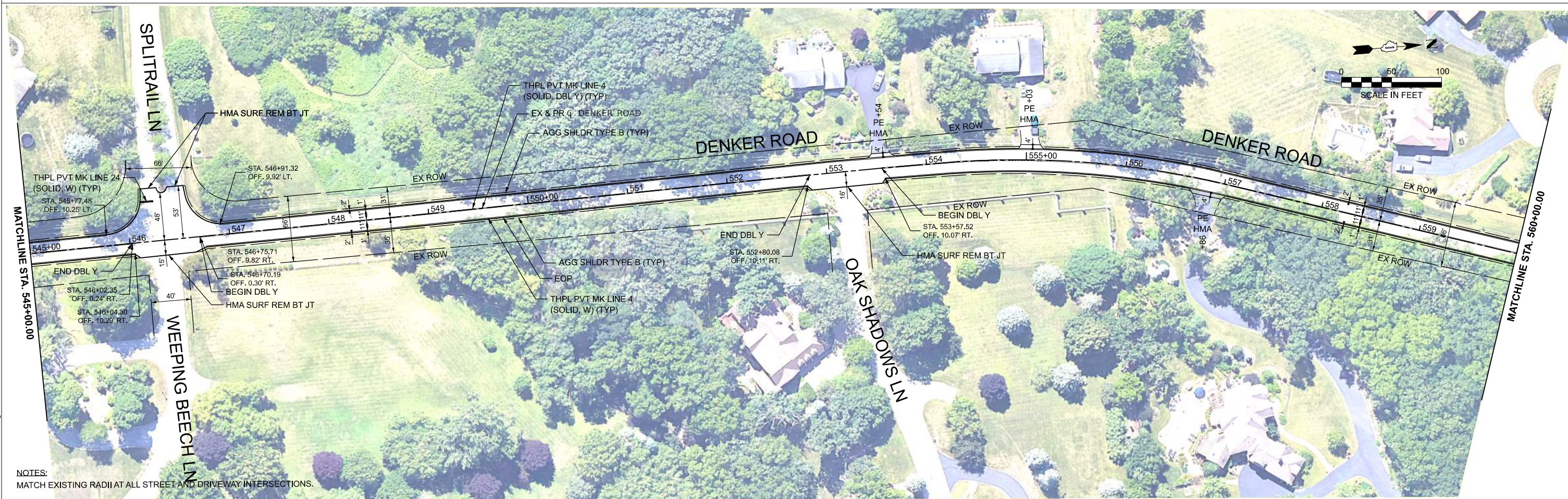
RESURFACING PLAN
DENKER ROAD

SCALE: 1"=50' SHEET 1 OF 3 SHEETS STA. 500+00.00 TO STA. 530+00.00

F.A.U. RTE. 0026	SECTION 24-00012-00-FP	COUNTY KANE	TOTAL SHEETS 28	SHEET NO. 18
CONTRACT NO. 61L30			ILLINOIS FED. AID PROJECT	



NOTES:
MATCH EXISTING RADII AT ALL STREET AND DRIVEWAY INTERSECTIONS.



NOTES:
MATCH EXISTING RADII AT ALL STREET AND DRIVEWAY INTERSECTIONS.

MODEL: Pr_CJ_Denker - Denker Plan 3 (Sheet)
FILE NAME: 2306066-Sht-Plan-Denker.dgn



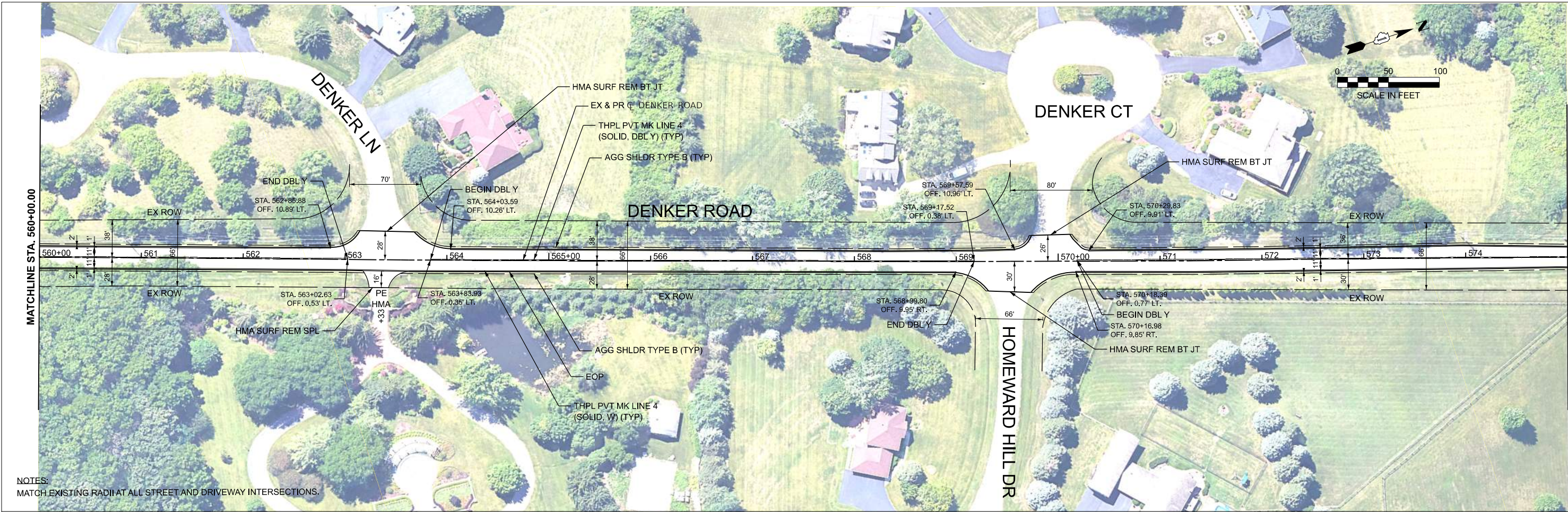
USER NAME = benjamin.belgrave	DESIGNED - JJS	REVISED -
PLOT SCALE = 0.16666833 / in.	DRAWN - BJB	REVISED -
PLOT DATE = 3/27/2026	CHECKED -	REVISED -
	DATE - 3/27/2026	REVISED -

**STATE OF ILLINOIS
DEPARTMENT OF TRANSPORTATION**

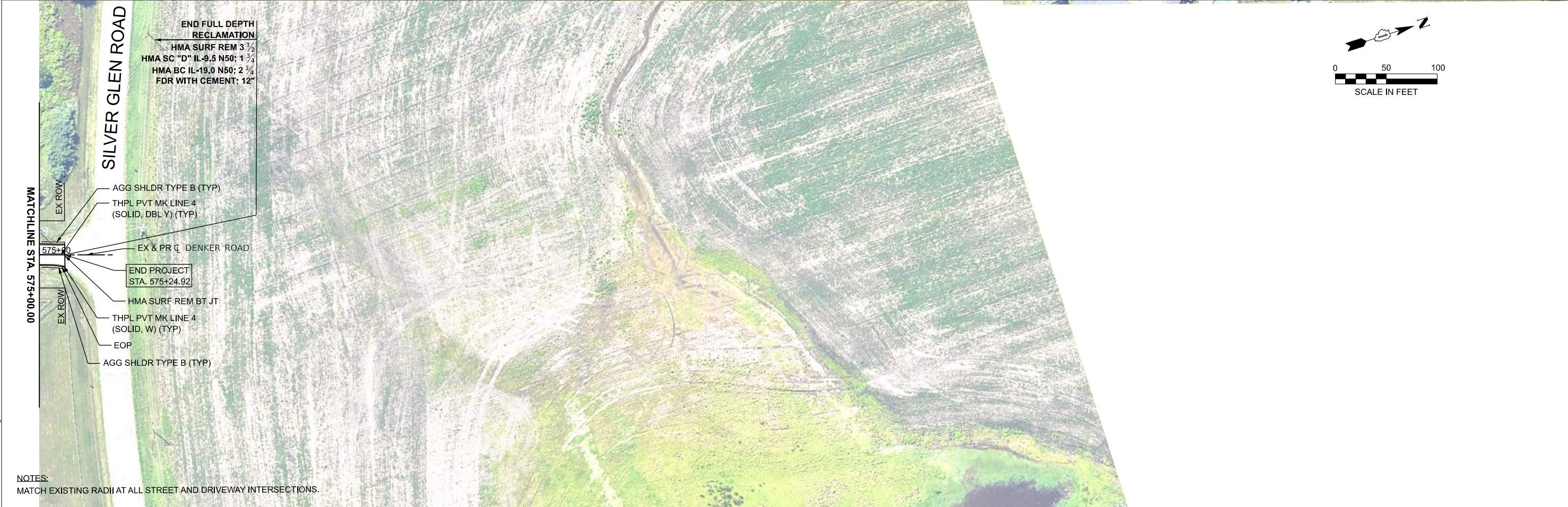
**RESURFACING PLAN
DENKER ROAD**

SCALE: 1"=50' SHEET 2 OF 3 SHEETS STA. 530+00.00 TO STA. 560+00.00

F.A.U. RTE.	SECTION	COUNTY	TOTAL SHEETS	SHEET NO.
0026	24-00012-00-FP	KANE	28	19
CONTRACT NO.			61L30	
ILLINOIS FED. AID PROJECT				



NOTES:
MATCH EXISTING RADII AT ALL STREET AND DRIVEWAY INTERSECTIONS.



NOTES:
MATCH EXISTING RADII AT ALL STREET AND DRIVEWAY INTERSECTIONS.

MODEL: Pr_C1_Denker - Denker Plan F (Sheet)
FILE NAME: 2306066-Silver-Plan-Denker.dgn



USER NAME = benjamin.belgrave	DESIGNED - JJS	REVISED -
PLOT SCALE = 0.16666633' / in.	DRAWN - BJB	REVISED -
PLOT DATE = 3/27/2026	CHECKED -	REVISED -
	DATE - 3/27/2026	REVISED -

**STATE OF ILLINOIS
DEPARTMENT OF TRANSPORTATION**

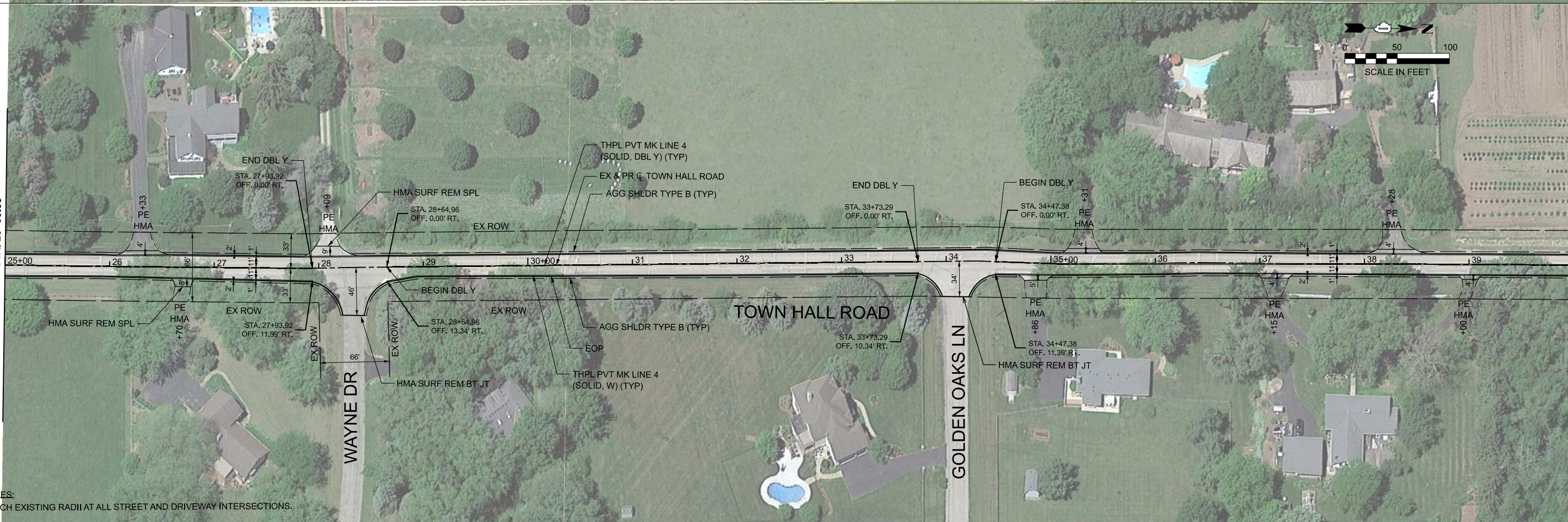
**RESURFACING PLAN
DENKER ROAD**

SCALE: 1"=50' SHEET 3 OF 3 SHEETS STA. 560+00.00 TO STA. 590+00.00

F.A.U. RTE.	SECTION	COUNTY	TOTAL SHEETS	SHEET NO.
0026	24-00012-00-FP	KANE	28	20
CONTRACT NO. 61L30				
ILLINOIS FED. AID PROJECT				



NOTES:
MATCH EXISTING RADII AT ALL STREET AND DRIVEWAY INTERSECTIONS.



NOTES:
MATCH EXISTING RADII AT ALL STREET AND DRIVEWAY INTERSECTIONS.

MODEL: P:\C\TownHall-1 - TownHall Plan 1 [Sheet]
FILE NAME: 230606-SH-Plan-TownHall.dgn



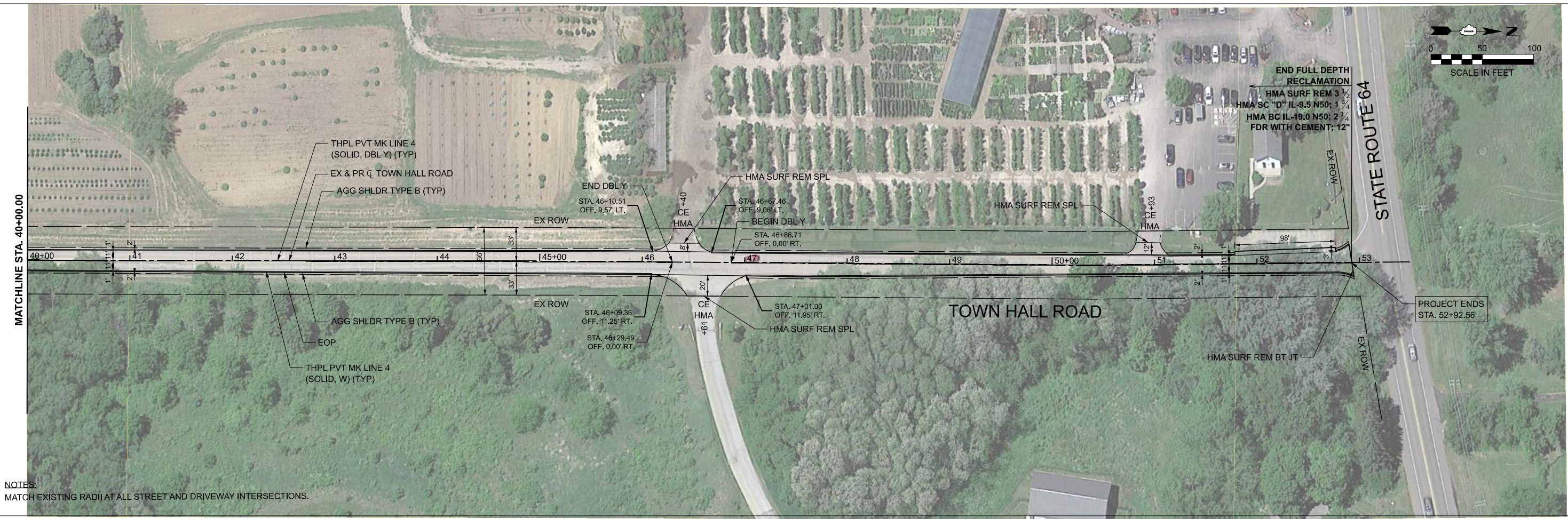
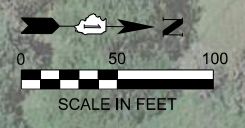
USER NAME = benjamh.belgrave	DESIGNED - JJS	REVISED -
PLOT SCALE = 0.16666833' / in.	DRAWN - BJB	REVISED -
PLOT DATE = 3/27/2026	CHECKED -	REVISED -
	DATE - 3/27/2026	REVISED -

**STATE OF ILLINOIS
DEPARTMENT OF TRANSPORTATION**

**RESURFACING PLAN
TOWN HALL ROAD**

SCALE: 1"=50' SHEET 1 OF 2 SHEETS STA. 10+00.00 TO STA. 40+00.00

F.A.U. RTE.	SECTION	COUNTY	TOTAL SHEETS	SHEET NO.
0226	24-00012-00-FP	KANE	28	21
CONTRACT NO. 61L30				
ILLINOIS FED. AID PROJECT				



NOTES:
MATCH EXISTING RADII AT ALL STREET AND DRIVEWAY INTERSECTIONS.

MODEL: P:\C\TownHall-1 - TownHall Plan 3 [Sheet]
FILE NAME: 230606-SH-TownHall.dgn



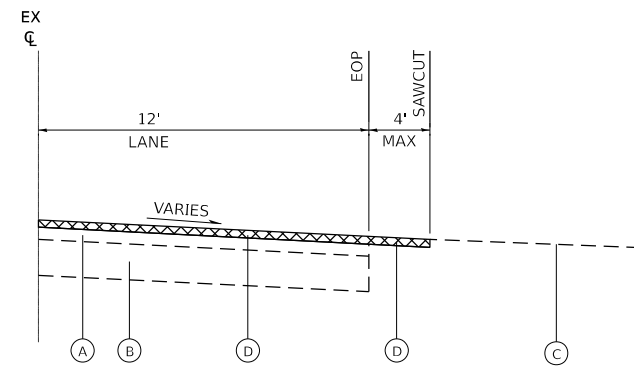
USER NAME = benjamin.belgrave	DESIGNED - JJS	REVISED -
	DRAWN - BJB	REVISED -
PLOT SCALE = 0.16666633' / in.	CHECKED -	REVISED -
PLOT DATE = 3/27/2026	DATE - 3/27/2026	REVISED -

**STATE OF ILLINOIS
DEPARTMENT OF TRANSPORTATION**

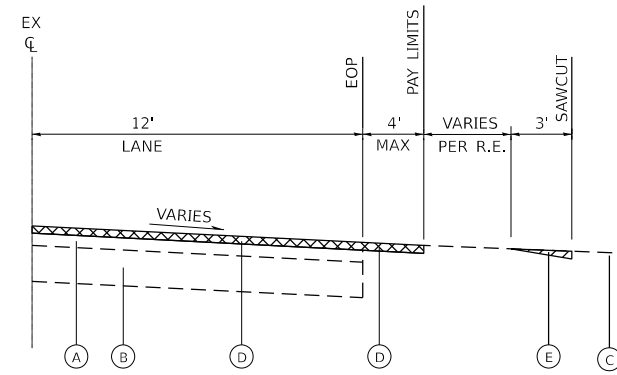
**RESURFACING PLAN
TOWN HALL ROAD**

SCALE: 1"=50' SHEET 2 OF 2 SHEETS STA. 40+00.00 TO STA. 55+00.00

F.A.U. RTE.	SECTION	COUNTY	TOTAL SHEETS	SHEET NO.
0226	24-00012-00-FP	KANE	28	22
CONTRACT NO. 61L30				
ILLINOIS FED. AID PROJECT				



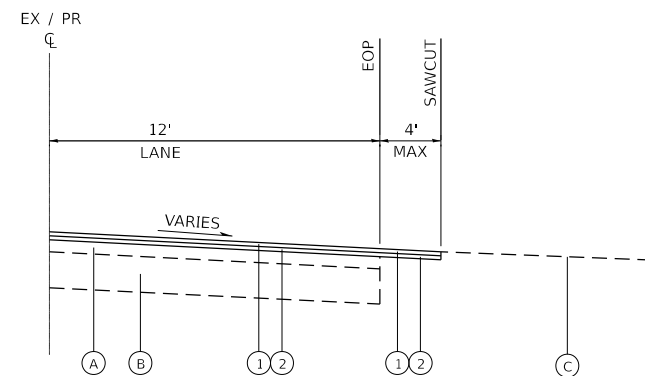
EXISTING / REMOVAL DETAIL



EXISTING / REMOVAL DETAIL

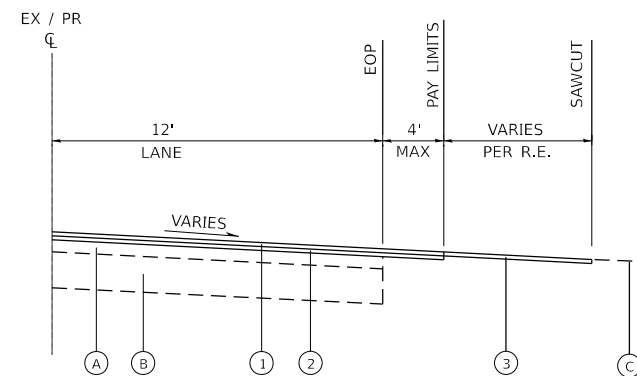
EXISTING LEGEND

- (A) EXISTING HOT-MIX ASPHALT PAVEMENT
- (B) EXISTING AGGREGATE BASE COURSE
- (C) EXISTING DRIVEWAY PAVEMENT
- (D) HOT-MIX ASPHALT SURFACE REMOVAL, 3½" (SEE RESURFACING PLANS)
- (E) HOT-MIX ASPHALT SURFACE REMOVAL, SPECIAL (PER SQ YD)



PROPOSED / RESURFACING DETAIL

CASE I



PROPOSED / RESURFACING DETAIL

CASE II

PROPOSED LEGEND

- (1) PROPOSED RESURFACING; HMA SURFACE COURSE (SEE HMA MIX TABLE)
- (2) PROPOSED RESURFACING; HMA BINDER COURSE (SEE HMA MIX TABLE)
- (3) INCIDENTAL HOT-MIX ASPHALT SURFACING (PER TON)

DRIVEWAY RESURFACING DETAILS

MODEL: construction detail [Sheet]
FILE NAME: 2304066-Sht-Construction-Detail.dgn



USER NAME = benjamin.belgrave	DESIGNED - JJS	REVISED -
	DRAWN - BJB	REVISED -
PLOT SCALE = 0.16666833' / in.	CHECKED -	REVISED -
PLOT DATE = 3/27/2026	DATE - 3/27/2026	REVISED -

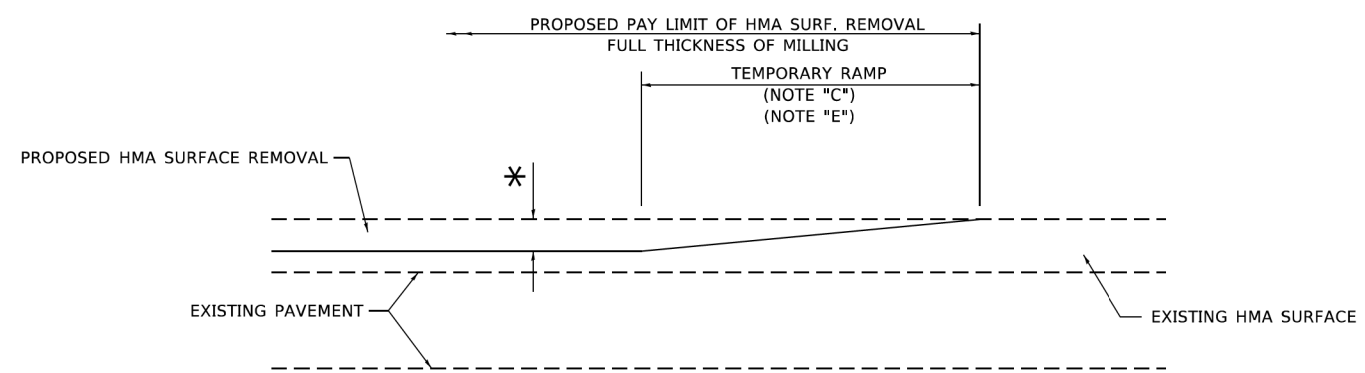
**STATE OF ILLINOIS
DEPARTMENT OF TRANSPORTATION**

CONSTRUCTION DETAIL

SCALE: N.T.S. SHEET 1 OF 1 SHEETS STA. TO STA.

F.A.U. RTE.	SECTION	COUNTY	TOTAL SHEETS	SHEET NO.
*	24-00012-00-FP	KANE	28	23
CONTRACT NO.			61L30	
ILLINOIS		FED. AID PROJECT		

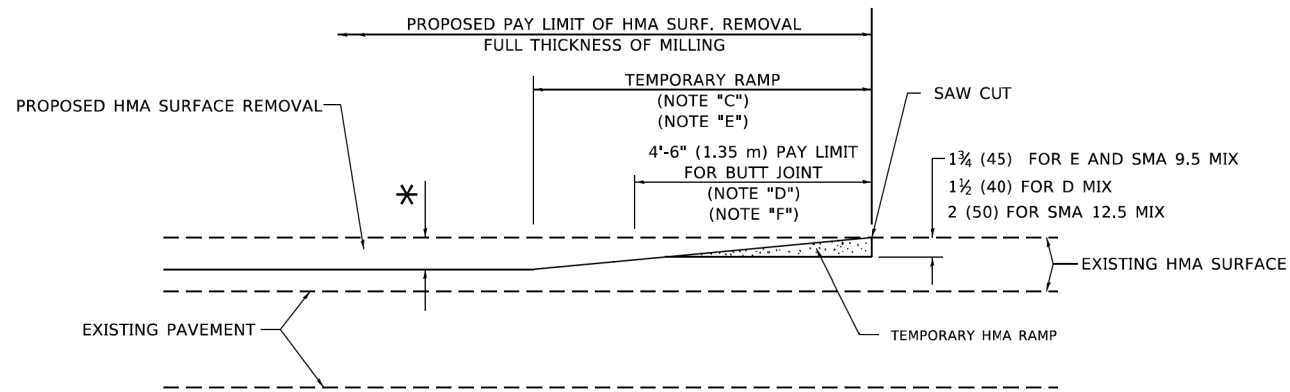
*0178, 0117, 0026, 0226



MILLED TEMPORARY RAMP

(FOR BUTT JOINT AND HMA TAPER SEE DETAIL BELOW)

OPTION 1

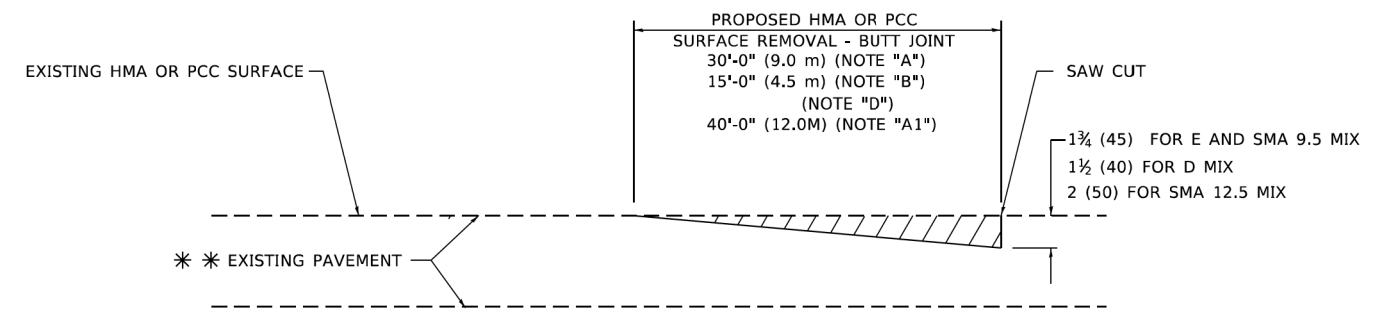


HMA CONSTRUCTED TEMPORARY RAMP

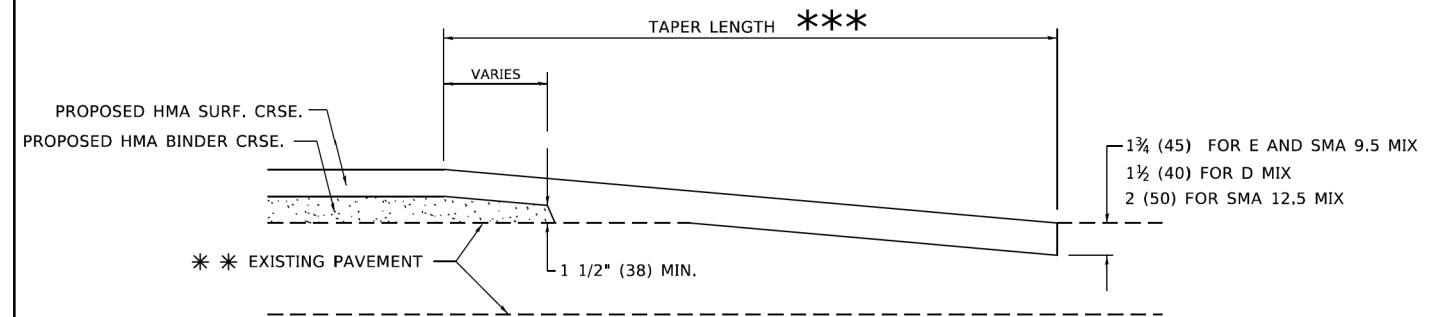
(FOR BUTT JOINT AND HMA TAPER SEE DETAIL BELOW)

OPTION 2

TYPICAL TEMPORARY RAMP



BUTT JOINT DETAIL



HMA TAPER DETAIL

TYPICAL BUTT JOINT AND HMA TAPER FOR RESURFACING ONLY

*** PC CONCRETE, HMA OR HMA RESURFACED PAVEMENT.

GENERAL NOTES

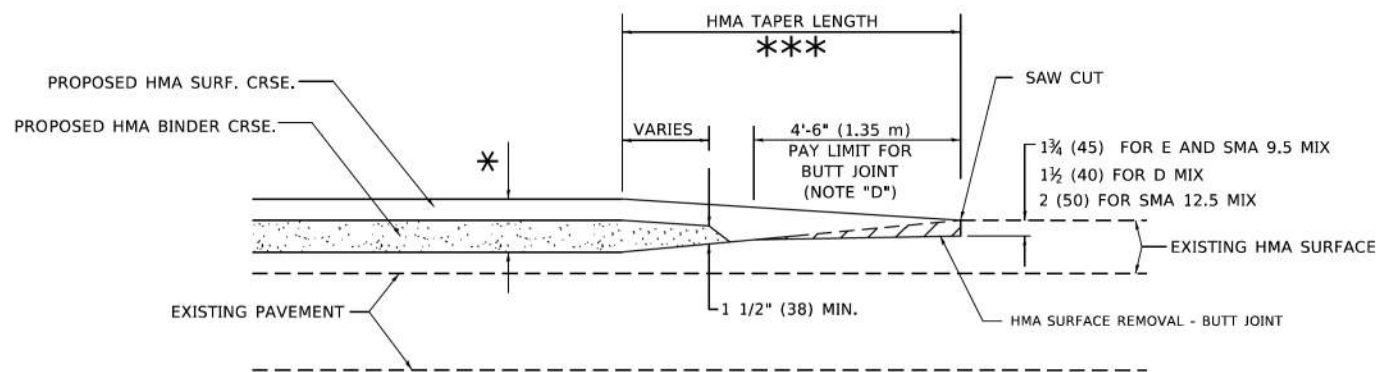
- A. MAINLINE ARTERIAL ROADWAYS AND MAJOR SIDE ROADS.
- A1. INTERSTATES
- B. MINOR SIDE ROADS.
- C. THE TEMP. RAMP SHALL BE CONSTRUCTED IMMEDIATELY UPON REMOVAL OF THE EXISTING HMA SURFACE.
- D. THE BUTT JOINT SHALL BE CONSTRUCTED IMMEDIATELY PRIOR TO PLACING THE PROPOSED HMA COURSES.
- E. TAPER THE TEMP. RAMP AT A RATE OF 3' - 4" (1.02m) PER 1 INCH (25 mm) OF MILLING THICKNESS.
* SEE TYPICAL SECTIONS FOR MILLING THICKNESS.
- F. SEE ARTICLE 406.08 AND 406.14 OF THE STANDARD SPECIFICATIONS FOR "HMA AND/OR PCC SURFACE REMOVAL, BUTT JOINT".
- *** 20'-0" (6.1 m) PER 1 (25) RESURFACING (NOTE "A")
10'-0" (3.0 m) PER 1 (25) RESURFACING (NOTE "B")

BASIS OF PAYMENT

- 1. THE BUTT JOINT WILL BE PAID FOR AT THE CONTRACT UNIT PRICE PER SQUARE YARD (SQUARE METER) FOR "HOT-MIX ASPHALT SURFACE REMOVAL - BUTT JOINT" OR FOR "PORTLAND CEMENT CONCRETE SURFACE REMOVAL- BUTT JOINT".
- 2. THE TEMPORARY RAMP AND SAW CUT SHALL BE INCLUDED IN THE UNIT COST FOR HMA OR PCC SURFACE REMOVAL-BUTT JOINT.

ALL DIMENSIONS ARE IN INCHES (MILLIMETERS) UNLESS OTHERWISE SHOWN.

*0178, 0117, 0026, 0226



BUTT JOINT AND HMA TAPER

TYPICAL BUTT JOINT AND HMA TAPER FOR MILLING AND RESURFACING

MODEL: Default
FILE: \\p01182-cw-bentley.com\p01182\DOT\Documents\DOT_Offices\Bentley_1\Projects\Bentley\213\ACAD\Bentley\DOT\Bentley\213.dgn

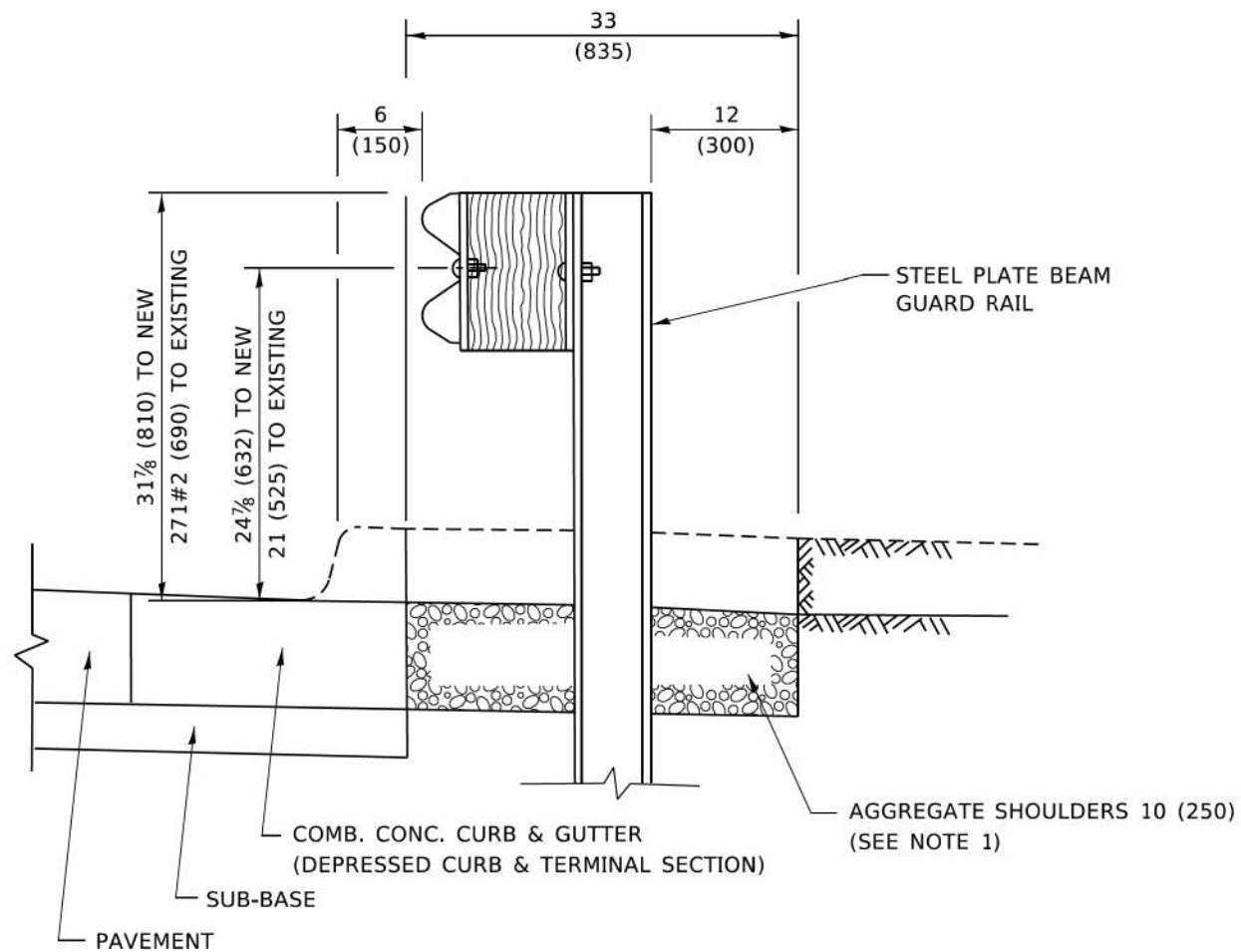
USER NAME = Lawrence.DeManche	DESIGNED - M. DE YONG	REVISED - A. ABBAS 03-21-97
	DRAWN -	REVISED - M. GOMEZ 04-06-01
PLOT SCALE = 100.0000' / in.	CHECKED -	REVISED - R. BORO 01-01-07
PLOT DATE = 11/18/2022	DATE - 06-13-90	REVISED - K. SMITH 11-18-22

STATE OF ILLINOIS
DEPARTMENT OF TRANSPORTATION

BUTT JOINT AND
HMA TAPER DETAILS

SCALE: NONE SHEET 1 OF 1 SHEETS STA. TO STA.

F.A.U. RTE.	SECTION	COUNTY	TOTAL SHEETS	SHEET NO.
*	24-00012-00-FP	KANE	28	24
BD400-05 BD-32		CONTRACT NO. 61L30		
ILLINOIS FED. AID PROJECT				

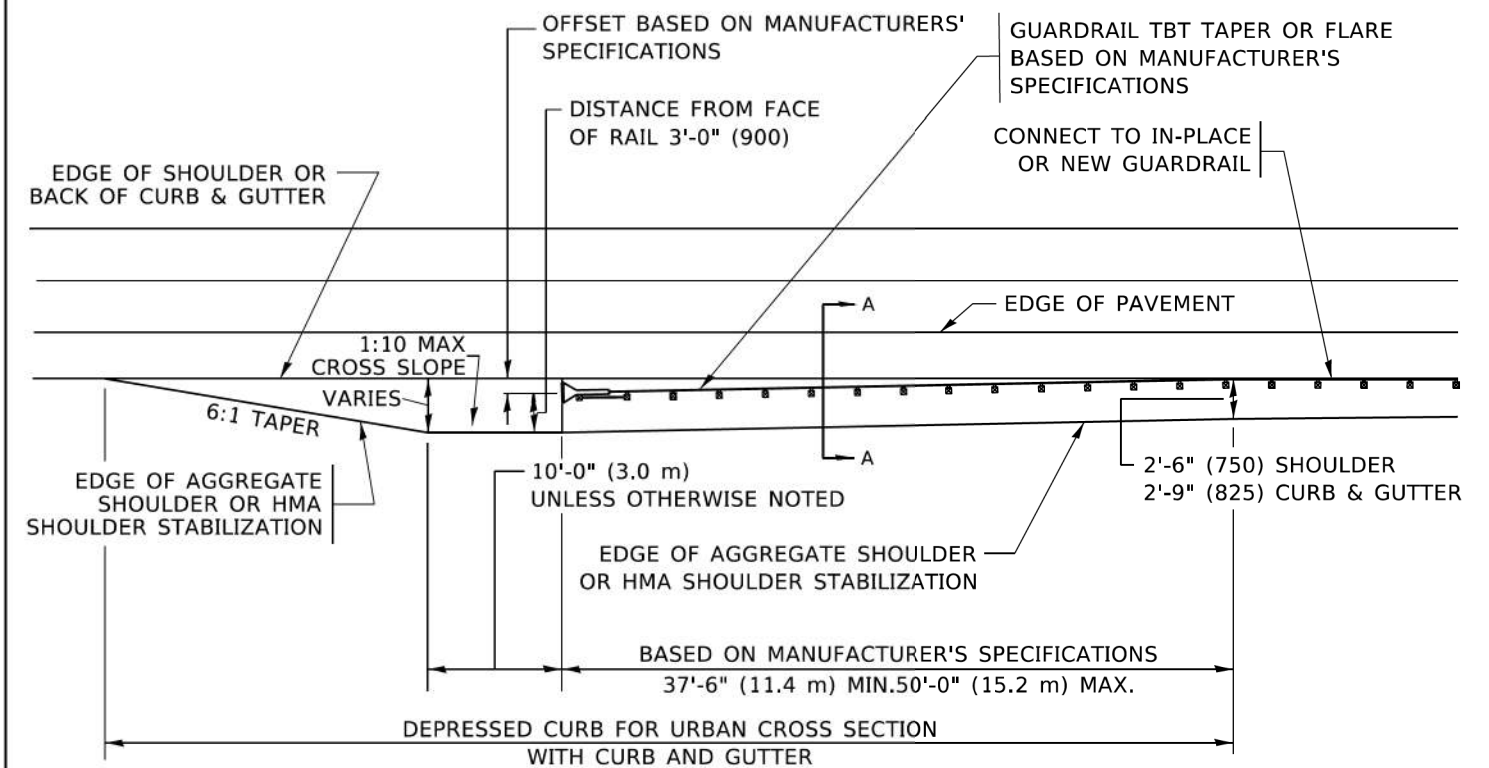


SECTION A-A

NOTES:

1. THE AGGREGATE SHOULDER, 10 (250) OR HMA SHOULDER, 6 (150) (IF REQUIRED) SHALL EXTEND UNDER THE TRAFFIC BARRIER TERMINAL.
2. "EXISTING" GUARDRAIL REFERS TO CONNECTING TERMINAL SECTION TO GUARD RAILING PRIOR TO THE MIDWEST GUARDRAIL SYSTEM.
3. THE CONTRACTOR SHALL VERIFY THE TYPE/HEIGHT OF GUARDRAIL IN-PLACE BEFORE ORDERING THE NEW TERMINAL SECTION. COST INCLUDED WITH THE COST OF THE TERMINAL. THE EXISTING GUARDRAIL HEIGHT SHALL TRANSITION TO MATCH THE NEW TERMINAL END SECTION AND SHALL BE PAID FOR AS VERTICAL ADJUSTMENT OF EXISTING GUARDRAIL.

**DETAILS FOR STEEL PLATE BEAM
GUARD RAIL ADJACENT TO CURB AND GUTTER
[FOR ROADWAY SPEED 35 MPH (60 kmh) TO 45 MPH (70 kmh)]**



**DEPRESSED CURB AND GUTTER AND
SHOULDER TREATMENT AT TBT TY. 1 SPL.**

AGGREGATE SHOULDER, 10 (250) WILL BE PAID ACCORDING TO SECTION 481.

HMA SHOULDERS 6 (150) (IF REQUIRED) WILL BE PAID ACCORDING TO SECTION 482.

COMB. CONC. C&G, STEEL PLATE BEAM GUARD RAIL AND TRAFFIC BARRIER TERMINAL, OF THE TYPE SPECIFIED WILL BE PAID FOR SEPARATELY.

TBT = TRAFFIC BARRIER TERMINAL
ALL DIMENSIONS ARE IN INCHES (MILLIMETERS)
UNLESS OTHERWISE SHOWN.

*0178, 0117, 0026, 0226

MODEL: Default
FILE: \\mspc-cw-bentley.com\pwworkspace\Documents\DOT Office\District 1\Project\1181822\1181822.dgn

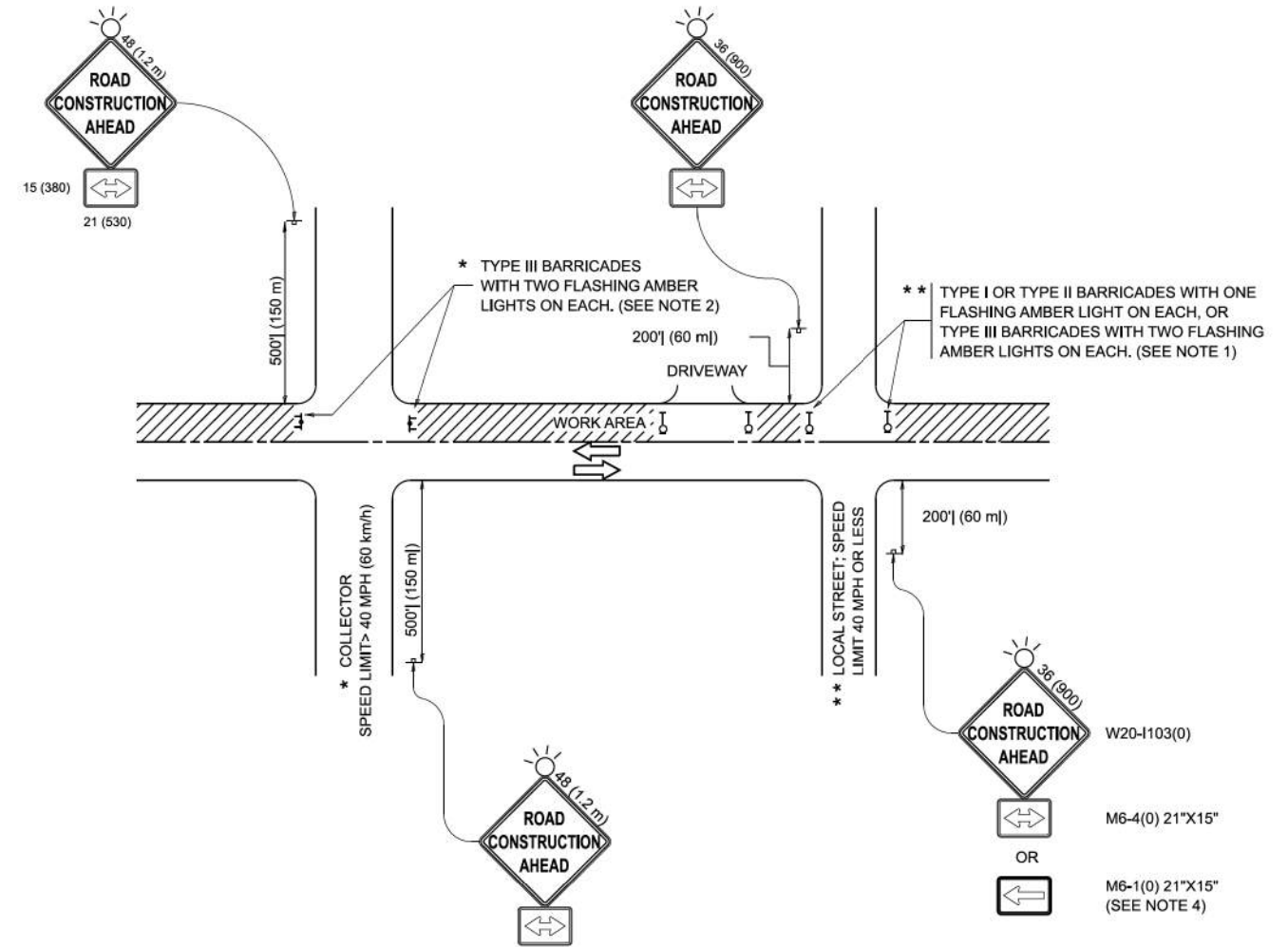
USER NAME = Lawrence.DeManche	DESIGNED - M. DE YONG	REVISED - R. BORO 09-14-2009
	DRAWN -	REVISED - R. BORO 08-06-2012
PLOT SCALE = 100.0000' / in.	CHECKED -	REVISED - R. BORO 05-08-2015
PLOT DATE = 11/18/2022	DATE - 09-22-90	REVISED - K. SMITH 11-18-22

**STATE OF ILLINOIS
DEPARTMENT OF TRANSPORTATION**

**DETAILS FOR DEPRESSED CURB & GUTTER AND
SHOULDER TREATMENT AT TBT TY. 1 SPL.**

SCALE: NONE SHEET 1 OF 1 SHEETS STA. TO STA.

F.A.U. RTE.	SECTION	COUNTY	TOTAL SHEETS	SHEET NO.
*	24-00012-00-FP	KANE	28	25
BD600-10 (BD-34)			CONTRACT NO.	61L30
ILLINOIS FED. AID PROJECT				



NOTES:

- SIDE ROAD WITH A SPEED LIMIT OF 40 MPH (60 km/h) OR LESS AS SHOWN ON THE DRAWING AND AS DIRECTED BY THE ENGINEER:
 - ONE "ROAD CONSTRUCTION AHEAD" SIGN 36 x 36 (900x900) WITH A FLASHER MOUNTED ON IT APPROXIMATELY 200' (60 m) IN ADVANCE OF THE MAIN ROUTE.
 - THE CLOSED PORTION OF THE MAIN ROUTE SHALL BE PROTECTED BY BLOCKING WITH TYPE I, TYPE II OR TYPE III BARRICADES, 1/3 OF THE CROSS SECTION OF THE CLOSED PORTION.
- SIDE ROAD WITH A SPEED LIMIT GREATER THAN 40 MPH (60 km/h) AS SHOWN ON THE DRAWING AND AS DIRECTED BY THE ENGINEER:
 - ONE "ROAD CONSTRUCTION AHEAD" SIGN 48 x 48 (1.2 m x 1.2 m) WITH A FLASHER MOUNTED ON IT APPROXIMATELY 500' (150 m) IN ADVANCE OF THE MAIN ROUTE.
 - THE CLOSED PORTION OF THE MAIN ROUTE SHALL BE PROTECTED BY BLOCKING WITH TYPE III BARRICADES, 1/2 OF THE CROSS SECTION OF THE CLOSED PORTION.
- CONES MAY BE SUBSTITUTED FOR BARRICADES OR DRUMS AT HALF THE SPACING DURING DAY OPERATIONS. CONES SHALL BE A MINIMUM OF 28 (710) IN HEIGHT.
- WHEN THE SIDE ROAD LIES BETWEEN THE BEGINNING OF THE MAINLINE SIGNING AND THE WORK ZONE, A SINGLE HEADED ARROW (M6-1) SHALL BE USED IN LIEU OF THE DOUBLE HEADED ARROW (M6-4).
- WHEN WORK IS BEING PERFORMED ON A SIDE ROAD OR DRIVEWAY, FOLLOW THE APPLICABLE STANDARD(S). THE DIRECTIONAL ARROW (M6-1 OR M6-4) SHALL BE COVERED OR REMOVED WHEN NO LONGER CONSISTENT WITH THE TRAFFIC CONTROL SET-UP.
- ADVANCE WARNING SIGNS ARE TO BE OMITTED ON DRIVEWAYS UNLESS OTHERWISE SPECIFIED IN THE PLANS OR BY THE ENGINEER.
- THE TRAFFIC CONTROL AND PROTECTION FOR SIDE ROADS, INTERSECTIONS, AND DRIVEWAYS SHALL BE INCLUDED IN THE COST OF SPECIFIED TRAFFIC CONTROL STANDARDS OR ITEMS.

All dimensions are in inches (millimeters) unless otherwise shown.

*0178, 0117, 0026, 0226

MODEL: TC-10 (Sheet)
FILE NAME: c:\pwworkspace\lawrence.demanche\09514151\TC-10.dgn

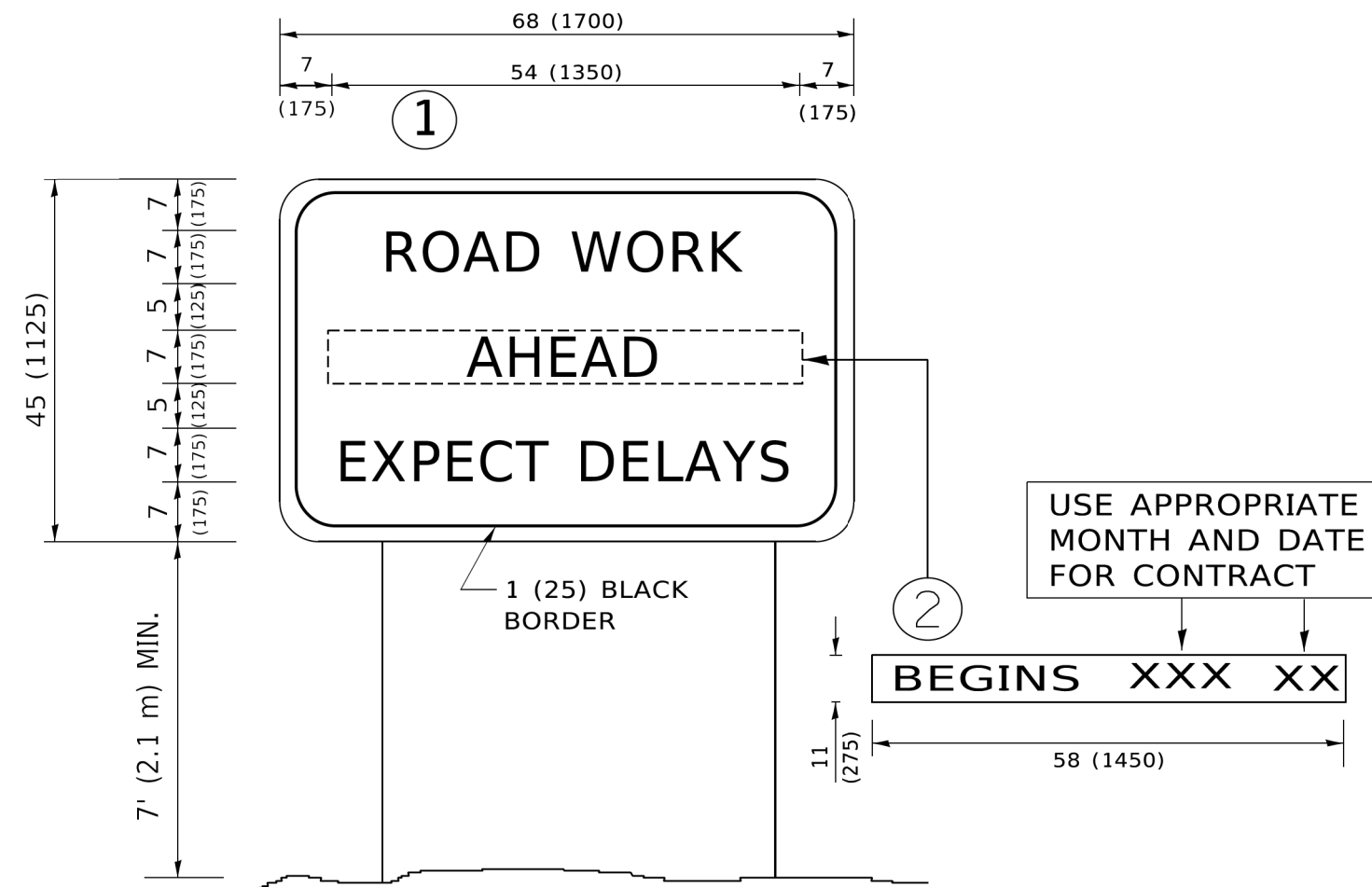
USER NAME = lawrence.demanche	DESIGNED - L.H.A.	REVISED - T. RAMMACHER 01-06-00
	DRAWN -	REVISED - A. SCHUETZE 07-01-13
PLOT SCALE = 0.08333317" / in.	CHECKED -	REVISED - A. SCHUETZE 09-15-06
PLOT DATE = 10/2/2025	DATE - 06-89	REVISED - D. SENDERAK 05-03-25

**STATE OF ILLINOIS
DEPARTMENT OF TRANSPORTATION**

**TRAFFIC CONTROL AND PROTECTION FOR
SIDE ROADS, INTERSECTIONS, AND DRIVEWAYS**

SCALE: SHEET OF SHEETS STA. TO STA.

F.A.U. RTE.	SECTION	COUNTY	TOTAL SHEETS	SHEET NO.
*	24-00012-00-FP	KANE	28	26
TC-10			CONTRACT NO.	61L30
ILLINOIS FED. AID PROJECT				



NOTES:

1. USE BLACK LETTERING ON ORANGE BACKGROUND.
2. ERECT SIGNS IN ADVANCE OF THE LOCATION FOR THE "ROAD CONSTRUCTION AHEAD" SIGN AT LOCATIONS AS DIRECTED BY THE ENGINEER.
3. ERECT SIGN ① WITH INSTALLED PANEL ② ONE WEEK PRIOR TO THE START OF CONSTRUCTION.
4. REMOVE PANEL ② SOON AFTER THE START OF CONSTRUCTION.
5. SEE SPECIAL PROVISION FOR "TEMPORARY INFORMATION SIGNING" FOR ADDITIONAL INFORMATION.
6. ONE SIGN ASSEMBLY EQUALS 25.70 SQ. FT. (2.3 SQ. M.)
7. SHALL BE PAID FOR AS TEMPORARY INFORMATION SIGNING.

ALL DIMENSIONS ARE IN INCHES (MILLIMETERS) UNLESS OTHERWISE SHOWN.

*0178, 0117, 0026, 0226

MODEL: Default
 FILE NAME: P:\110848\BID\NTEG\Illinois.gov\PIV\DOT\Documents\DOT_Offices\District 1\Projects\018542234\CAD\09a\CAD\Sheet122.dgn

USER NAME = foatemj	DESIGNED -	REVISED - R. MIRS 09-15-97
	DRAWN -	REVISED - R. MIRS 12-11-97
PLOT SCALE = 50,0000 ' / in.	CHECKED -	REVISED - T. RAMMACHER 02-02-99
PLOT DATE = 3/4/2019	DATE -	REVISED - C. JUCIUS 01-31-07

**STATE OF ILLINOIS
DEPARTMENT OF TRANSPORTATION**

**ARTERIAL ROAD
INFORMATION SIGN**

SCALE: NONE SHEET 1 OF 1 SHEETS STA. TO STA.

F.A.U. RTE.	SECTION	COUNTY	TOTAL SHEETS	SHEET NO.
*	24-00012-00-FP	KANE	28	28
TC-22		CONTRACT NO. 61L30		
ILLINOIS FED. AID PROJECT				