

STATE OF ILLINOIS
DEPARTMENT OF TRANSPORTATION

F.A.P. RTE.	SECTION	COUNTY	TOTAL SHEETS	SHEET NO.
22	(115BR)BRR	WHITESIDE	26	1
		ILLINOIS	CONTRACT NO. 64T46	

FOR INDEX OF SHEETS, SEE SHEET NO. 2

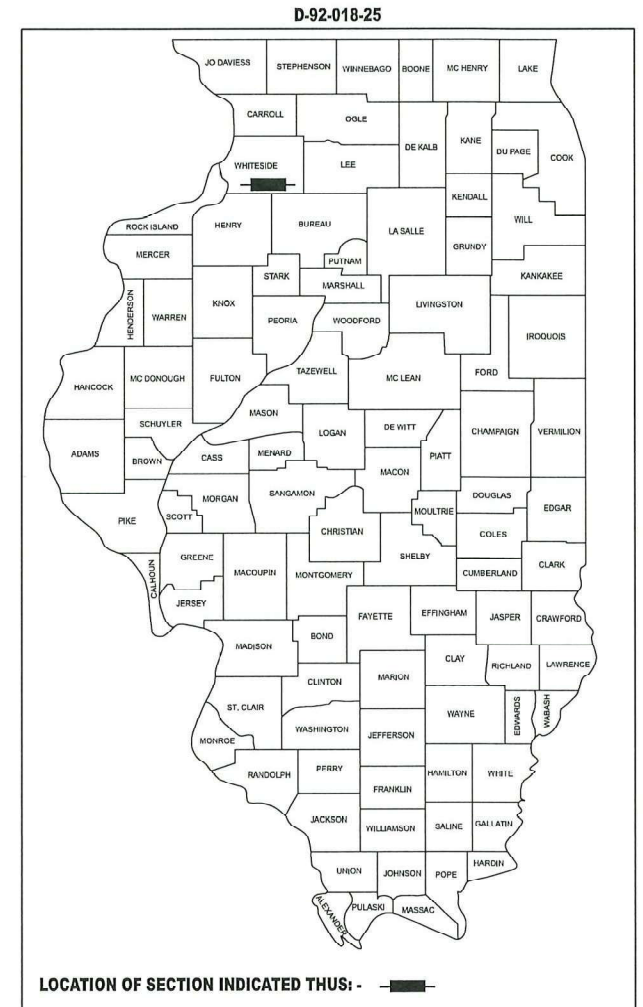
FOR LIST OF HIGHWAY STANDARDS, SEE SHEET NO. 2

PROPOSED HIGHWAY PLANS

FAP ROUTE 22 (IL 78)
SECTION (115 BR)BRR
PROJECT STP-ZPKD(153)
BRIDGE REHABILITATION
WHITESIDE COUNTY
C-92-130-24

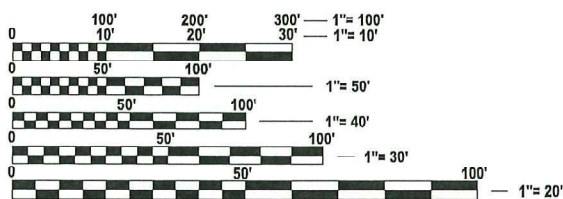
DESIGN DESIGNATION

TRAFFIC DATA



BEGIN IMPROVEMENTS
STA 116+96.25

LOCATION MAP
NOT TO SCALE



FULL SIZE PLANS HAVE BEEN PREPARED USING STANDARD ENGINEERING SCALES. REDUCED SIZED PLANS WILL NOT CONFORM TO STANDARD SCALES. IN MAKING MEASUREMENTS ON REDUCED PLANS, THE ABOVE SCALES MAY BE USED.

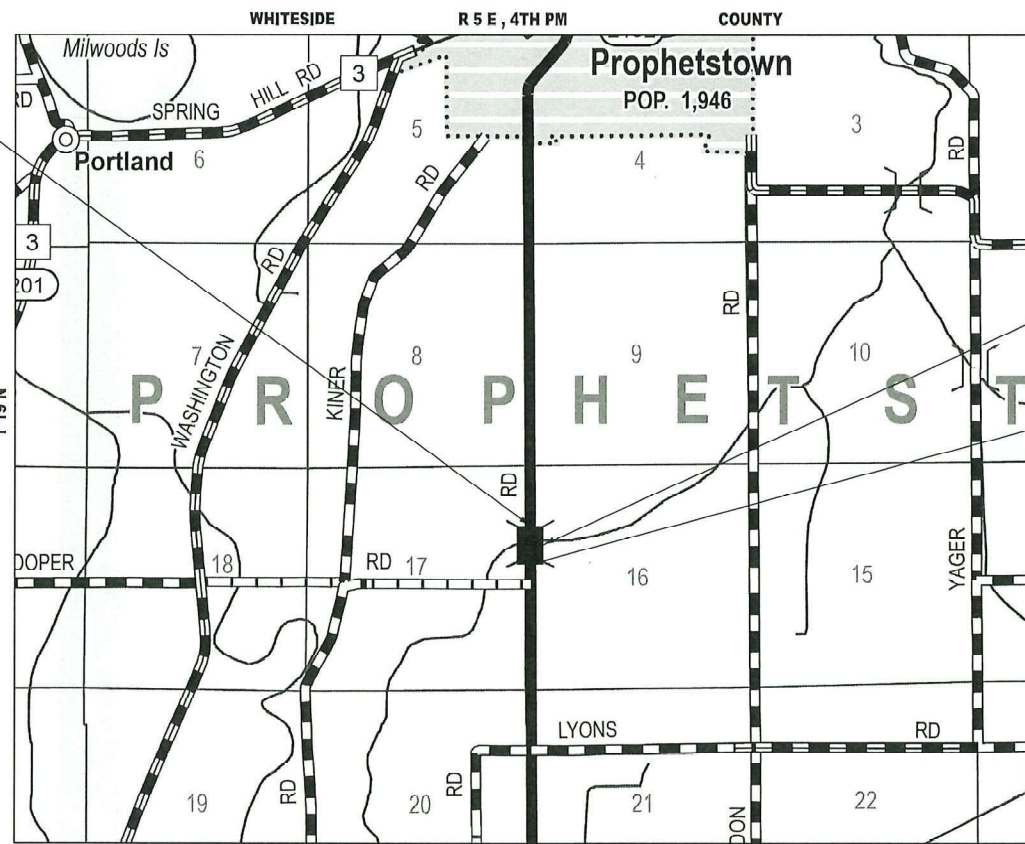
J.U.L.I.E.
JOINT UTILITY LOCATION INFORMATION FOR EXCAVATION
1-800-892-0123
OR 811

PROJECT ENGINEER:

PROJECT MANAGER: DERRICK LOPEZ, PE
(815) 284-5398

CONTRACT NO. 64T46

WILLIAM J. SLEEMAN
062-048685
REGISTERED
PROFESSIONAL
ENGINEER
OF
ILLINOIS
3-23-26



BRIDGE REHABILITATION
SN 098-0103

END IMPROVEMENTS
STA 118+11.75

GROSS LENGTH = 115.5 FT. = 0.022 MILE
NET LENGTH = 115.5 FT. = 0.022 MILE



STATE OF ILLINOIS
DEPARTMENT OF TRANSPORTATION

SUBMITTED March 25 20 26
Mika Sharpson
REGIONAL ENGINEER

May 8 20 26
Scott E. [Signature]
ENGINEER OF DESIGN AND ENVIRONMENT

May 8 20 26
[Signature]
DIRECTOR OF HIGHWAYS PROJECT IMPLEMENTATION

**PRINTED BY THE AUTHORITY
OF THE STATE OF ILLINOIS**

INDEX OF SHEETS

1	COVER SHEET
2	GENERAL NOTES, HIGHWAY STANDARDS, COMMITMENTS AND MIXTURE REQUIREMENTS
3-5	SUMMARY OF QUANTITIES
6-7	SCHEDULE OF QUANTITIES
8-11	MAINTENANCE OF TRAFFIC PLANS
12	ROADWAY PLAN
13-16	STRUCTURE PLANS
17-20	WORK ZONE SIGN DETAILS (DISTRICT STANDARD 34.1)
21-25	TYPICAL PAVEMENT MARKING (DISTRICT STANDARD 41.1)
26	RELLECTORS (SPECIAL) (DISTRICT STANDARD 55.1)

HIGHWAY STANDARDS

- 000001-09 - STANDARD SYMBOLS, ABBREVIATIONS AND PATTERNS
- 001001-02 - AREAS OF REINFORCEMENT BARS
- 001006- DECIMAL OF AN INCH AND A FOOT
- 701006-05 - OFF-RD OPERATIONS 2L 2W 15' TO 24' FROM PAVEMENT EDGE
- 701201-05 - LANE CLOSURE, 2L 2W, DAY ONLY 45 MPH OR MORE
- 701301-04 - LANE CLOSURE, 2L 2W SHORT TIME OPERATIONS
- 701311-03 - LANE CLOSURE 2L 2W, MOVING OPERATIONS DAY ONLY
- 701321-19 - LANE CLOSURE, 2L 2W, BRIDGE REPAIR WITH BARRIER
- 701326-04 - LANE CLOSURE, 2L 2W, PAVEMENT WIDENING 45 MPH OR MORE
- 701901-11 - TRAFFIC CONTROL DEVICES
- 704001-08 - TEMPORARY CONCRETE BARRIER
- 780001-05 - TYPICAL PAVEMENT MARKINGS

GENERAL NOTES

1. ALL BORROW/WASTE/USE SITES MUST BE APPROVED BY THE DEPARTMENT PRIOR TO REMOVING ANY MATERIAL FROM THE PROJECT OR INITIATING ANY EARTHMOVING ACTIVITIES, INCLUDING TEMPORARY STOCKPIILING OUTSIDE THE LIMITS OF CONSTRUCTION.
2. THE CONTRACTOR SHALL SUBMIT A SEQUENCE OF CONSTRUCTION OPERATIONS TO THE RESIDENT ENGINEER FOR APPROVAL BEFORE THIS PROJECT IS STARTED.
3. THE CONTRACTOR SHALL NOTIFY TRAFFIC OPERATIONS A MINIMUM OF 5 WORKING DAYS PRIOR TO PLACING PERMANENT PAVEMENT MARKING OR SIGNING.
4. THE CONTRACTOR WILL NOT BE ALLOWED TO SET UP A YARD OR FIELD OFFICE ON STATE PROPERTY WITHOUT WRITTEN PERMISSION FROM THE DEPARTMENT.
5. THE CONTRACTOR SHALL BE RESPONSIBLE FOR PROTECTING UTILITY PROPERTY DURING CONSTRUCTION OPERATIONS AS OUTLINED IN ARTICLE 107.31 OF THE STANDARD SPECIFICATIONS. A MINIMUM OF 48 HOURS ADVANCE NOTICE IS REQUIRED FOR NON-EMERGENCY WORK. THE JULIE NUMBER IS 800-892-0123.
6. IDOT IS NOT A MEMBER OF JULIE. IF YOU ARE NEAR ANY OVERHEAD LIGHTING, INTERSECTION LIGHTING, OR TRAFFIC SIGNALS, CONTACT THE IDOT TRAFFIC OFFICE AT 815-284-5469 AT LEAST 48 HOURS PRIOR TO WORK.
7. IN ADDITION TO FIELD REVIEW AND AERIAL DATA, PLAN DIMENSIONS AND DETAILS RELATING TO THE EXISTING FACILITIES HAVE BEEN TAKEN FROM EXISTING PLANS AND AERIALS AND ARE SUBJECT TO CONSTRUCTION VARIATIONS. IT IS THE CONTRACTORS RESPONSIBILITY TO ASCERTAIN EXISTING FIELD CONDITIONS BEFORE BIDDING ON THIS PROJECT, SPECIFICALLY AS THEY RELATE TO THE LUMP SUM PAY ITEMS. THE CONTRACTOR SHALL VERIFY ALL DIMENSIONS AND CONDITIONS IN THE FIELD PRIOR TO CONSTRUCTION AND ORDERING OF MATERIALS. SUCH VARIATIONS SHALL NOT BE CAUSE FOR ADDITIONAL COMPENSATION FOR CHANGE IN SCOPE OF WORK. HOWEVER, CONTRACTOR WILL BE PAID FOR THE QUANTITY ACTUALLY FURNISHED AT THE BID PRICE FOR THE WORK.
8. NO STREAM PERMITS HAVE BEEN PROCURED FOR THIS PROJECT. NONE IS REQUIRED FROM THE REGULATORY AGENCIES IF THERE IS NO DEBRIS FALLING OR BEING PLACED INTO THE STREAM. ANY TEMPORARY FILL IN THE STREAM OR THE COMPROMISING OF THE DIKE (IF APPLICABLE) WILL NOT BE ALLOWED. IF THE CONTRACTOR CHOOSES TO ALTERNATE/MODIFIED CONSTRUCTION METHOD(S), THEY WILL BE RESPONSIBLE FOR OBTAINING THE PROPER PERMITS. NO RELIEF OR COMPENSATION WILL BE GIVEN FOR ANY DELAYS, WORKING DAYS CHARGED, OR CALENDAR DAYS EXPIRED DUE TO THE LOSS OF TIME OR DELAY DURING THE RE-SUBMITTAL PROCESS TO PROCURE ANY NECESSARY PERMIT(S) DUE TO THE CONTRACTOR CHOOSING ALTERNATE/MODIFIED CONSTRUCTION METHOD(S), ABSOLUTELY NO CONSTRUCTION ACTIVITIES WILL TAKE PLACE WITHOUT THE PROPER PERMITS BEING SECURED.
9. ALL ELEVATIONS SHOWN REFER TO THE NORTH AMERICAN VERTICAL DATUM OF 1988 (NAVD 88).
10. IDOT DISTRICT 2 OPERATIONS TRAFFIC SIGNAL SECTION SHALL BE CONTACTED AT 815-284-5474 FOR CONTROLLER PROGRAMMING AND TIMING APPROVAL PRIOR TO ACTIVATING THE TEMPORARY BRIDGE TRAFFIC SIGNALS.
11. SAW CUTTING PRIOR TO ANY REMOVAL ITEMS NOTED ON THE PLANS OR DIRECTED BY THE ENGINEER SHALL BE CONSIDERED INCLUDED IN THE COST OF THE ITEMS BEING REMOVED.
12. UNLESS DIRECTED BY THE ENGINEER, PAVEMENT MARKING LINES SHALL NOT BE LAID DIRECTLY OVER A LONGITUDIAL CRACK OR JOINT NOR OVER A TAR OR ASPHALT PAINTED LINE.
 - THE EDGE OF A CENTERLINE SHALL BE OFFSET A MINIMUM DISTANCE OF 2" FROM A CRACK OR JOINT.
 - EDGE LINES SHALL BE APPROXIMATELY 2" FROM THE EDGE LINE OF PAVEMENT. SEE SECTION 780 OF THE STANDARD SPECIFICATIONS FOR TRAFFICE CONTROL ITEMS.
13. PAVEMENT MARKING SHALL BE DONE ACCORDING TO STANDARD 780001, EXCEPT AS FOLLOWS:
 - ALL WORDS, SUCH AS ONLY, SHALL BE 8 FEET HIGH.
 - ALL NON-FREEWAY ARROWS SHALL BE THE LARGE SIZE.
 - THE DISTANCE BETWEEN YELLOW NO-PASSING LINES SHALL BE 8 INCHES, NOT 7 INCHES, AS SHOWN IN THE DETAIL OF TYPICAL LANE AND EDGE LINES.
 - CENTERLINE SKIP DASH PAVEMENT MARKING ON MULTI-LANE DIVIDED, MULTI-LANE UNDIVIDED, AND ONE- WAY ROADWAY SHALL BE ACCORDING TO DISTRICT STANDARD 41.1.

MIXTURE REQUIREMENTS

SECTION	(102BR-1)BRR
COUNTY	STEPHENSON
CONTRACT	64T46

MIXTURE USE	SURFACE COURSE	BINDER COURSE
AC/PG	PG58-28	PG58-28
DESIGN AIR VOIDS	4.0% @ Ndes 50	4.0% @ Ndes 50
MIX COMPOSITION (GRADATION)	IL 9.5	IL 19.0
FRICTION AGG	MIXTURE "C"	N/A
QUALITY MANAGEMENT PROGRAM	QC/QA	QC/QA

APPLICATION RATES:

FACTORS USED FOR ESTIMATING PLAN QUANTITIES ARE AS FOLLOWS AND SHALL NOT BE USED FOR THE BASIS OF FINAL QUANTITIES:

- ALL HOT-MIX ASPHALT..... 112 LB/SQ YD/INCH
- BITUMINOUS MATERIALS (TACK COAT)*
- ON MILLED PAVEMENTS..... 0.05 LB/SQ FT
- BETWEEN HMA LIFTS..... 0.05 LB/SQ FT
- EXISTING PAVEMENT..... 0.05 LB/SQ FT
- BITUMINOUS MATERIALS (PRIME COAT).... 0.25 LB/SQ FT
- ALL AGGREGATE..... 2.05 TON/CU YD
- *POLYMER TACK SHALL BE SS-1HP, CSS-1HP, OR NTEA LISTED MATERIAL

COMMITMENTS

- NONE

GENERAL NOTES (CONTINUED)

14. THE QUANTITIES INCLUDED IN THE PLANS FOR HOT-MIX ASPHALT RESURFACING ARE INTENDED TO GIVE THE COVERAGE SHOWN ON THE TYPICAL CROSS SECTIONS. IT IS NOT INTENDED TO INCREASE THE THICKNESS OF THE HOT-MIX ASPHALT MICTURE IN ORDER TO USE ALL OF THE QUANTITIES INCLUDED IN THE CONTRACT.
15. THE AREA TO BE TACKED OR PRIMED SHALL BE LIMITED TO THAT WHICH CAN BE COVERED WITH HMA ON THE NEXT DAY'S PRODUCTION, BUT NO MORE THAN FIVE DAYS IN ADVANCE OF THE PLACEMENT OF THE HMA, UNLESS APPROVED BY THE ENGINEER.
16. RELOCATE TEMPORARY IMPACT ATTENUATORS SHALL INCLUDE STORAGE AND TRANSPORTATION TO AND FROM STORAGE, WHEN THE DEVICE IS NOT NEEDED FOR A TIME, AS SHOWN ON THE STAGING PLANS. THIS SHALL BE INCLUDED IN THE CONTRACT UNIT PRICE PER EACH IMPACT ATTENUATORS, RELOCATE OF THE TYPE SPECIFIED.
17. WHEN RELOCATED TEMPORARY CONCRETE BARRIER IS SPECIFIED, THE WALL SHALL BE REMOVED, STORAGE AND TRANSPORTATION TO AND FROM STORAGE, WHEN THE WALL IS NOT NEEDED FOR A TIME AS SHOWN ON THE STAGING PLANS, RELOCATED AND REINSTATED AT THE NEW LOCATION. THE REINSTALLATION REQUIREMENTS SHALL BE THE SAME AS THOSE FOR A NEW INSTALLATION. THIS SHALL BE PAID FOR AT THE CONTRACT UNIT PRICE PER FOOT FOR RELOCATE TEMPORARY CONCRETE BARRIER.
18. THE CONTRACTOR SHALL CONFINE HIS/HER OPERATIONS TO THE AREA LOCATED WITHIN THE CONSTRUCTION LIMITS SHOWN ON THE PLANS. ANY AREA DISTURBED BEYOND THESE LIMITS SHALL BE RESTORED TO THE SATISFACTION OF THE ENGINEER AT NO ADDITIONAL COST TO THE DEPARTMENT.
19. AREAS OF DECK REPAIRS ARE SHOWN AS ESTIMATED. THE ENGINEER SHALL SHOW ACTUAL LOCATIONS OF DECK REPAIRS ON AS-BUILT PLANS.

MODEL - GENERAL NOTES (Sheet) FILE NAME: P:\25EA\1851\Structure #098-0103\Design\CADD Sheets\098-0103 - sht 002 - General Notes.dgn



USER NAME = gsturgeon	DESIGNED - MBH	REVISED -
PLOT SCALE = \$SCALE\$	CHECKED - WJS	REVISED -
PLOT DATE = 3/23/2026	DATE -	REVISED -

**STATE OF ILLINOIS
DEPARTMENT OF TRANSPORTATION**

**INDEX OF SHEETS, GENERAL NOTES, HIGHWAY STANDARDS,
COMMITMENTS & MIXTURE REQUIREMENTS**

SCALE: 1"=50' SHEET 1 OF 1 SHEETS STA. ___+___ TO STA. ___+___

F.A.P. RTE.	SECTION	COUNTY	TOTAL SHEETS	SHEET NO.
22	115BR(BRR)	WHITESIDE	26	2
CONTRACT NO. 64T46				
ILLINOIS FED. AID PROJECT				

80% FED
20% STATE

CODE NO.	ITEM	UNIT	TOTAL QUANTITY	CONSTRUCTION CODE	
				OGLE COUNTY ROADWAY	OGLE COUNTY BRIDGE
				0059	0059
				RURAL	S.N. 098-0103
40600290	BITUMINOUS MATERIALS (TACK COAT)	POUND	328	328	
40600982	HOT-MIX ASPHALT SURFACE REMOVAL - BUTT JOINT	SQ YD	306	306	
40603080	HOT-MIX ASPHALT BINDER COURSE, IL-19.0, N50	TON	13	13	
40604050	HOT-MIX ASPHALT SURFACE COURSE, IL-9.5, MIX "C", N50	TON	55	55	
44000157	HOT-MIX ASPHALT SURFACE REMOVAL, 2"	SQ YD	271	271	
50300300	PROTECTIVE COAT	SQ YD	464		464
53016001	DECK SLAB REPAIR (FULL DEPTH, TYPE I)	SQ YD	1		1
53101002	BRIDGE DECK SCARIFICATION 3/4"	SQ YD	422		422
53101408	BRIDGE DECK LATEX CONCRETE OVERLAY, 2 1/4"	SQ YD	422		422
59000200	EPOXY CRACK INJECTION	FOOT	71		71
59300100	CONTROLLED LOW-STRENGTH MATERIAL	CU YD	2		2
67000400	ENGINEER'S FIELD OFFICE, TYPE A	CAL MO	1	1	
67100100	MOBILIZATION	L SUM	1	1	
70100405	TRAFFIC CONTROL AND PROTECTION, STANDARD 701321	EACH	1	1	

MODEL: SOQ 1
FILE NAME: P:\25E4183-1\Structure #098-0103\Design\Design\CADD Sheets\098-0103 - sht 003 - 005 - SOQ.dgn

USER NAME = gsturjeon	DESIGNED - GJS	REVISED -
	DRAWN - GJS	REVISED -
	CHECKED - WJS	REVISED -
PLOT DATE = 3/23/2026	DATE -	REVISED -

**STATE OF ILLINOIS
DEPARTMENT OF TRANSPORTATION**

**SUMMARY OF QUANTITIES
SN 098-0103**

SCALE: 1"=50' SHEET 1 OF 3 SHEETS STA. TO STA.

F.A.P. RTE.	SECTION	COUNTY	TOTAL SHEETS	SHEET NO.
22	(115BR)BRR	WHITESIDE	26	3
CONTRACT NO. 64T46				
ILLINOIS FED. AID PROJECT				

80% FED
20% STATE

CODE NO.	ITEM	UNIT	TOTAL QUANTITY	CONSTRUCTION CODE	
				OGLE COUNTY FUNDING ROADWAY	OGLE COUNTY FUNDING BRIDGE
				0059 RURAL	0059 S.N. 098-0103
70100450	TRAFFIC CONTROL AND PROTECTION, STANDARD 701201	L SUM	1	1	
70100500	TRAFFIC CONTROL AND PROTECTION, STANDARD 701326	L SUM	1	1	
70103815	TRAFFIC CONTROL SURVEILLANCE	CAL DA	5	5	
70106500	TEMPORARY BRIDGE TRAFFIC SIGNALS	EACH	1	1	
70106700	TEMPORARY RUMBLE STRIPS	EACH	3	3	
70107025	CHANGEABLE MESSAGE SIGN	CAL DA	28	28	
70300150	SHORT TERM PAVEMENT MARKING REMOVAL	SQ FT	668	668	
70307120	TEMPORARY PAVEMENT MARKING - LINE 4" - TYPE IV TAPE	FOOT	1932	1932	
70307210	TEMPORARY PAVEMENT MARKING - LINE 24" - TYPE IV TAPE	FOOT	24	24	
70400100	TEMPORARY CONCRETE BARRIER	FOOT	342	342	
70400200	RELOCATE TEMPORARY CONCRETE BARRIER	FOOT	342	342	
70600250	IMPACT ATTENUATORS, TEMPORARY (NON- REDIRECTIVE), TEST LEVEL 3	EACH	2	2	
70600350	IMPACT ATTENUATORS, RELOCATE (NON- REDIRECTIVE), TEST LEVEL 3	EACH	2	2	
* 78009004	MODIFIED URETHANE PAVEMENT MARKING - LINE 4"	FOOT	908	908	

*= SPECIALTY ITEM

MODEL: SOQ 2
FILE NAME: P:\25E4183-1\Structure #098-0103\Design\Design\CADD Sheets\098-0103 - sht 003 - 005 - SOQ.dgn

USER NAME = gsturjeon	DESIGNED - GJD	REVISED -
	DRAWN - GJS	REVISED -
	CHECKED - WJS	REVISED -
PLOT DATE = 3/23/2026	DATE -	REVISED -

**STATE OF ILLINOIS
DEPARTMENT OF TRANSPORTATION**

**SUMMARY OF QUANTITIES
SN 098-0103**

SCALE: 1"=50' SHEET 2 OF 3 SHEETS STA. TO STA.

F.A.P. RTE.	SECTION	COUNTY	TOTAL SHEETS	SHEET NO.
22	(115BR)BRR	WHITESIDE	26	4
			CONTRACT NO. 64T46	
ILLINOIS FED. AID PROJECT				

MODEL: SQ03 Sheet
 FILE NAME: P:\26E4183-1\Structure #098-0103\Design\CADD Sheets\098-0103 - sht 003 - 005 - SQ03.dgn

CODE NO.	ITEM	UNIT	TOTAL QUANTITY	CONSTRUCTION CODE	
				OGLE COUNTY FUNDING ROADWAY	OGLE COUNTY FUNDING BRIDGE
				0059 RURAL	0059 S.N. 098-0103
* 78011025	GROOVING FOR RECESSED PAVEMENT MARKING 5"	FOOT	647	647	
78300202	PAVEMENT MARKING REMOVAL - WATER BLASTING	SQ FT	303	303	
X5030250	BRIDGE DECK GROOVING (LONGITUDINAL)	SQ YD	308		308
* X7820008	BARRIER WALL REFLECTORS (SPECIAL)	EACH	8	8	
Z0001800	APPROACH SLAB REPAIR (PARTIAL DEPTH)	SQ YD	1		1
Z0013798	CONSTRUCTION LAYOUT	L SUM	1	1	
Z0029090	DIAMOND GRINDING (BRIDGE SECTION)	SQ YD	370		370
Z0032400	JOINT REPAIR	EACH	4		4

*= SPECIALTY ITEM

USER NAME = gsturjeon	DESIGNED - GJS	REVISED -
	DRAWN - GJS	REVISED -
	CHECKED - WJS	REVISED -
PLOT DATE = 3/23/2026	DATE -	REVISED -

**STATE OF ILLINOIS
 DEPARTMENT OF TRANSPORTATION**

**SUMMARY OF QUANTITIES
 SN 098-0103**

SCALE: 1"=50' SHEET 3 OF 3 SHEETS STA. TO STA.

F.A.P. RTE.	SECTION	COUNTY	TOTAL SHEETS	SHEET NO.
22	(115BR)BRR	OGLE	26	5
CONTRACT NO. 64T46			ILLINOIS FED. AID PROJECT	

PAVING SCHEDULE								
LOCATION				40600290	40600982	40603080	40604050	44000157
STATION	TO	STATION	OFFSET	BITUMINOUS MATERIALS (TACK COAT)	HMA SURFACE REMOVAL - BUTT JOINT	HMA BINDER COURSE, IL-19.0 N50 (VARIES)	HMA SURFACE COURSE, IL-9.5 MIX "C", N50	HOT-MIX SURFACE REMOVAL, 2"
				POUND	SQ YD	TON	TON	SQ YD
SHOULDERS - PRESTAGE								
115+75.00	-	116+96.25	LT	31			7.6	67.4
115+75.00	-	116+96.25	RT	31			7.6	67.4
118+11.75	-	119+34.00	RT	31			7.7	68
118+11.75	-	119+34.00	LT	31			7.7	68
SHOULDERS - POSTSTAGE								
116+56.25	-	116+96.25	RT	15	23	0.93	1.9	
116+56.25	-	116+96.25	LT	15	23	0.93	1.9	
118+11.75	-	118+51.75	LT	15	23	0.93	1.9	
118+11.75	-	118+51.75	RT	15	23	0.93	1.9	
MAINLINE - POST STAGE								
116+56.25	-	116+96.25	-	72	107	4.5	8.2	
118+11.75	-	118+51.75	-	72	107	4.5	8.2	
SUBTOTAL				328	306	12.7	54.6	270.8
TOTAL				328	306	13	55	271

MODIFIED URETHANE PAVEMENT MARKING - LINE 4"					GROOVING	
SN #098-0103 - POST STAGE					78009004	78011025
LOCATION					LENGTH	LENGTH
STATION	TO	STATION	OFFSET	TYPE	FT	FT
114+20.00	-	116+96.25	-	YELLOW	80.0	80.0
115+75.25	-	116+96.25	RT	WHITE	121.0	121.0
115+75.00	-	116+96.25	LT	WHITE	121.3	121.3
116+96.25	-	118+11.75	-	YELLOW	30.0	
116+96.25	-	118+11.75	LT	WHITE	115.5	
116+96.25	-	118+11.75	RT	WHITE	115.5	
118+11.75	-	119+34.00	LT	WHITE	122.3	122.3
118+11.75	-	119+34.00	RT	WHITE	122.3	122.3
118+11.75		121+12.50	-	YELLOW	80.0	80.0
SUBTOTAL					907.8	646.8
TOTAL					908	647

PAVEMENT MARKING REMOVAL - WATER BLASTING				
SN #098-0103 - PRE STAGE				78300202
LOCATION				AREA
STATION	TO	STATION	OFFSET	SQ FT
114+20.00	-	121+12.50	-	63.4
115+75.00	-	119+34.00	RT	119.7
115+75.00	-	119+34.00	LT	119.7
SUBTOTAL				302.8
TOTAL				303

TRAFFIC CONTROL				
LOCATION			X7820008	
STATION	TO	STATION	BARRIER WALL REFLECTORS (SPECIAL)	
SN #098-0103 - PRE-STAGE				
SN #098-0103 - PHASE 1			4	
SN #098-0103 - PHASE 2			4	
SN #098-0103 - POST-STAGE				
TOTAL			8	

MODEL: SOQ 1
 FILE NAME: P:\25E4183-1\Structure #098-0103\Design\Design\CADD Sheets\098-0103 - sht 006 - sht 007 - Schedules.dgn

USER NAME = gsturjeon	DESIGNED - GJS	REVISED -
	DRAWN - GJS	REVISED -
	CHECKED - WJS	REVISED -
PLOT DATE = 3/23/2026	DATE -	REVISED -

STATE OF ILLINOIS
DEPARTMENT OF TRANSPORTATION

SCHEDULE OF QUANTITIES
SN 098-0103

SCALE: 1"=50' SHEET 1 OF 2 SHEETS STA. 0+01.73 TO STA. 15+01.73

F.A.P. RTE.	SECTION	COUNTY	TOTAL SHEETS	SHEET NO.
22	(115BR)BRR	WHITESIDE	26	6
CONTRACT NO. 64T46				
ILLINOIS FED. AID PROJECT				

TEMPORARY PAVEMENT MARKING SCHEDULE										
LOCATION				70300150	70307120	70307210	70400100	70400200	70600250	70600350
STATION	TO	STATION	OFFSET	SHORT TERM PAVEMENT MARKING REMOVAL	TEMPORARY PAVEMENT MARKING - LINE 4" TAPE IV TAPE	TEMPORARY PAVEMENT MARKING - LINE 24" TAPE IV TAPE	TEMPORARY CONCRETE BARRIER	RELOCATE TEMPORARY CONCRETE BARRIER	IMPACT ATTENUATORS, TEMPORARY (NON-REDIRECT IVE), TEST LEVEL 3	IMPACT ATTENUATORS, RELOCATE (NON-REDIRECT IVE), TEST LEVEL 3
				SQ FT	FT	FT	FT	FT	EACH	EACH
SN #098-0103 - PRE-STAGE										
114+20.00			0' RT			12				
121+12.50			0' LT			12				
SN #098-0103 - PRE-STAGE SUBTOTAL				0	0	24	0	0	0	0
SN #098-0103 - STAGE 1										
114+30.00	-	116+22.00	12' RT - 4' LT	64.2	192.7					
115+83.39			6' RT						1	
115+83.39	-	116+72.75	6' RT - 1' LT				88.7			
115+75.00	-	116+22.00	12' LT - 15' LT	15.7	47.2					
1162+22.00	-	118+88.00	4' LT	88.7	266.0					
116+22.00	-	118+88.00	15' LT	88.7	266.0					
116+72.75	-	118+37.42	1' LT				164.7			
118+37.42	-	119+25.78	1' LT - 6' RT				88.7			
118+88.00	-	119+36.00	4' LT - 0.0' LT	16.1	48.2					
118+86.75	-	119+34.00	15.0' LT - 12.0' LT	15.4	46.2					
119+25.78			6' RT						1	
118+36.00	-	120+36	0' RT - 12.0' RT	33.3	100.0					
SN #098-0103 - STAGE 1 SUBTOTAL				322	966	0	342.0	0	2	0
SN #098-0103 - STAGE 2										
114+74.00	-	115+74.00	12' LT - 0' LT	33.3	100.0					
115+75.00	-	116+22.00	12' RT - 15' RT	15.7	47.2					
115+74.00		116+22.00	0' RT - 4.0' RT	16.1	48.2					
115+59.14			6' LT							1
115+59.14	-	116+72.75	6' LT - 1.0' RT					88.7		
116+22.00	-	118+88.00	2.3' RT	88.7	266.0					
116+22.00	-	118+88.00	15.8' RT	88.7	266.0					
116+72.75	-	118+37.42	1.0' RT					164.7		
118+37.42	-	119+26.09	1.0' RT - 6.0' LT					88.7		
118+88.00	-	120+80.00	4.0' RT - 12.0' LT	64.2	192.7					
118+88.00	-	119+34.00	15.8' RT - 12.0' RT	15.4	46.2					
119+51.03			5.0' LT							1
SN #098-0103 - STAGE 2 SUBTOTAL				322	966	0	0	342	0	2
SN #098-0103 - POST-STAGE										
114+20.00			0' RT	12						
121+12.50			0' LT	12						
SN #098-0103 - POST-STAGE SUBTOTAL				24	0	0	0	0	0	0
TOTAL				668	1,932	24	342	342	2	2

MODEL: SOQ 2
FILE NAME: P:\25E4183-1\Structure #098-0103\Design\Design\CADD Sheets\098-0103 - sht 006 - sht 007 - Schedules.dgn

USER NAME = gsturjeon	DESIGNED - GJS	REVISED -
	DRAWN - GJS	REVISED -
	CHECKED - WJS	REVISED -
PLOT DATE = 3/23/2026	DATE -	REVISED -

STATE OF ILLINOIS
DEPARTMENT OF TRANSPORTATION

SCHEDULE OF QUANTITIES
SN 098-0103

SCALE: 1"=50' SHEET 2 OF 2 SHEETS STA. TO STA.

F.A.P. RTE.	SECTION	COUNTY	TOTAL SHEETS	SHEET NO.
22	(115BR)BRR	WHITESIDE	26	7
CONTRACT NO. 64T46				
ILLINOIS FED. AID PROJECT				

STAGE CONSTRUCTION NOTES

PRE STAGE - SEQUENCE OF CONSTRUCTION

1. CONSTRUCT HMA SHOULDER WIDENING UTILIZING TRAFFIC CONTROL STANDARD 701326.
2. PLACE "MAX WIDTH" SIGNING AT LOCATIONS SHOWN IN THE PLANS.
3. SET UP STAGE 1 TRAFFIC CONTROL UTILIZING THESE PLANS AND IN CONJUNCTION WITH STANDARD 701321.

STAGE 1 - SEQUENCE OF CONSTRUCTION

1. PERFORM STAGE 1 REMOVAL AND PROPOSED CONSTRUCTION FOR SN 098-0103.

STAGE 2 - SEQUENCE OF CONSTRUCTION

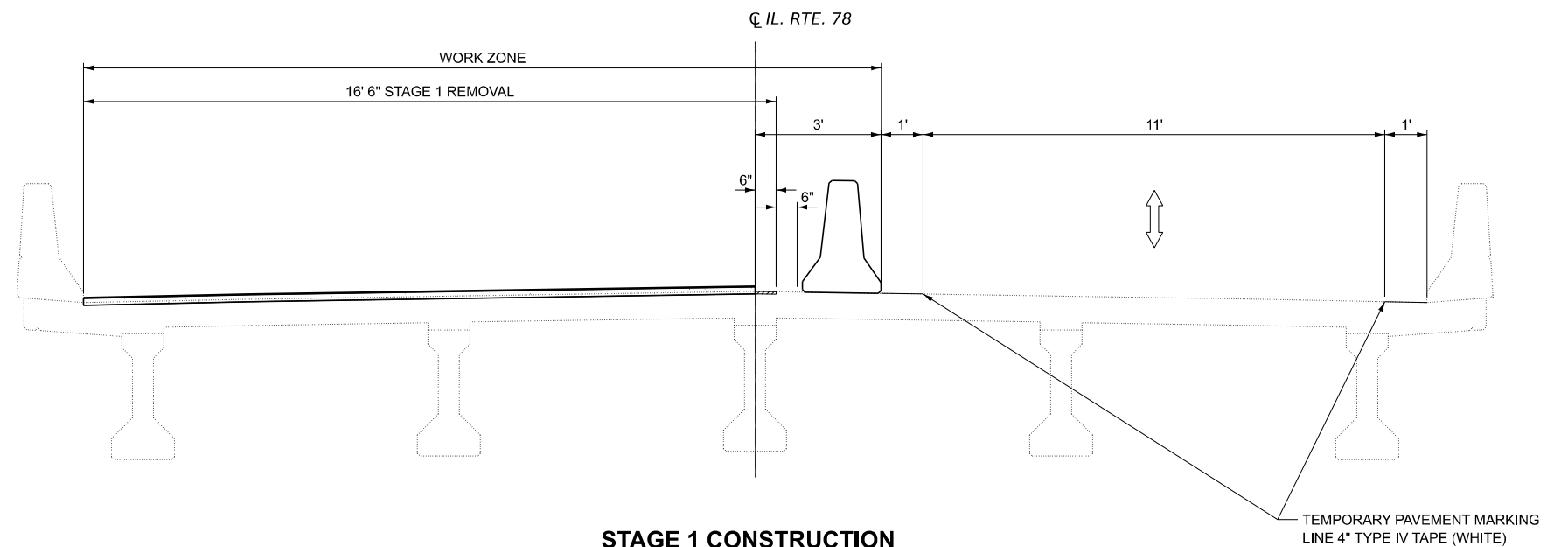
1. FOLLOWING COMPLETION OF STAGE 1 CONSTRUCTION, REMOVE STAGE 1 TEMPORARY PAVEMENT MARKINGS.
2. SET UP STAGE 2 TRAFFIC CONTROL UTILIZING THESE PLANS AND IN CONJUNCTION WITH STANDARD 701321.
3. PERFORM STAGE 2 REMOVAL AND PROPOSED CONSTRUCTION FOR SN 098-0103.

POST STAGE - SEQUENCE OF CONSTRUCTION

1. FOLLOWING THE CONSTRUCTION OF THE PROPOSED CONSTRUCTION WORK FOR THE STRUCTURE, REMOVE TEMPORARY CONCRETE BARRIERS, ATTENUATORS, TEMPORARY PAVEMENT MARKINGS, STOP BARS, ETC. PLACE SHORT TERM PAVEMENT MARKING PRIOR TO OPENING TO TWO-WAY TRAFFIC. PLACE PERMANENT PAVEMENT MARKINGS AND PAINT STEEL ON STRUCTURE UTILIZING APPROPRIATE HIGHWAY STANDARDS.

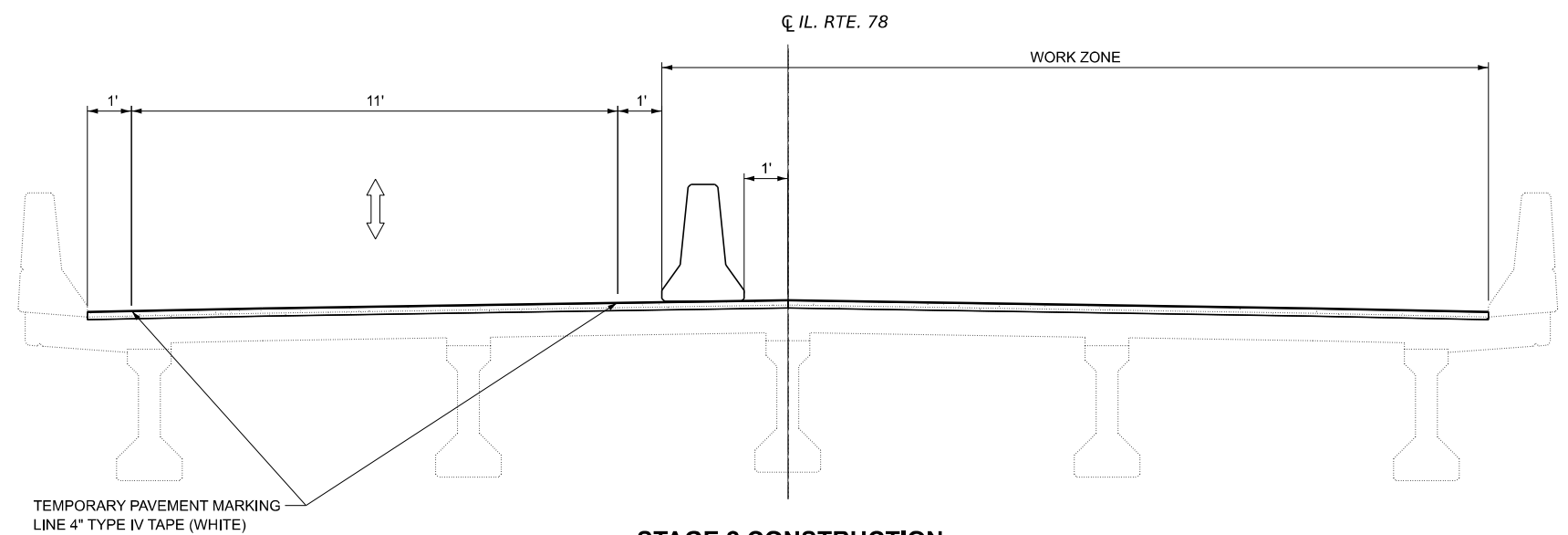
TRAFFIC CONTROL NOTES:

1. THIS TRAFFIC CONTROL PLAN SHALL BE USED IN CONJUNCTION WITH STANDARD 701321. TEMPORARY RUMBLE STRIPS, TEMPORARY SIGNING AND TEMPORARY PAVEMENT MARKINGS NOT SHOWN IN THIS DETAIL WILL BE REQUIRED AND SHALL BE INSTALLED AS SHOWN IN STANDARD 701321. TRAFFIC CONTROL DEVICES NOT SHOWN IN THIS DETAIL SHALL BE PER STANDARD 701321.
2. ALL OFFSETS IN THIS DETAIL REFER TO THE EDGE OF BARRIER OR PAVEMENT MARKING LINE NEAREST TO LIVE TRAFFIC.
3. A QUANTITY OF 712.5 FEET OF TEMPORARY PAVEMENT MARKING LINE, 6" HAS BEEN INCLUDED IN THE PLANS FOR PAINTING THE BOTTOM VERTICAL 6" OF THE TEMPORARY CONCRETE BARRIERS ON BOTH SIDES. COLOR OF MARKING LINE SHALL BE YELLOW.
4. WHERE PERMANENT RRPMS ARE PRESENT AND CONFLICT WITH THE REVISED TRAFFIC PATTERNS, ONLY THE REFLECTORS SHALL BE REMOVED.



STAGE 1 CONSTRUCTION

STA 116+96.25 TO STA 118+11.75
(LOOKING SOUTH)



STAGE 2 CONSTRUCTION

STA 116+96.25 TO STA 118+11.75
(LOOKING SOUTH)

**STATE OF ILLINOIS
DEPARTMENT OF TRANSPORTATION**

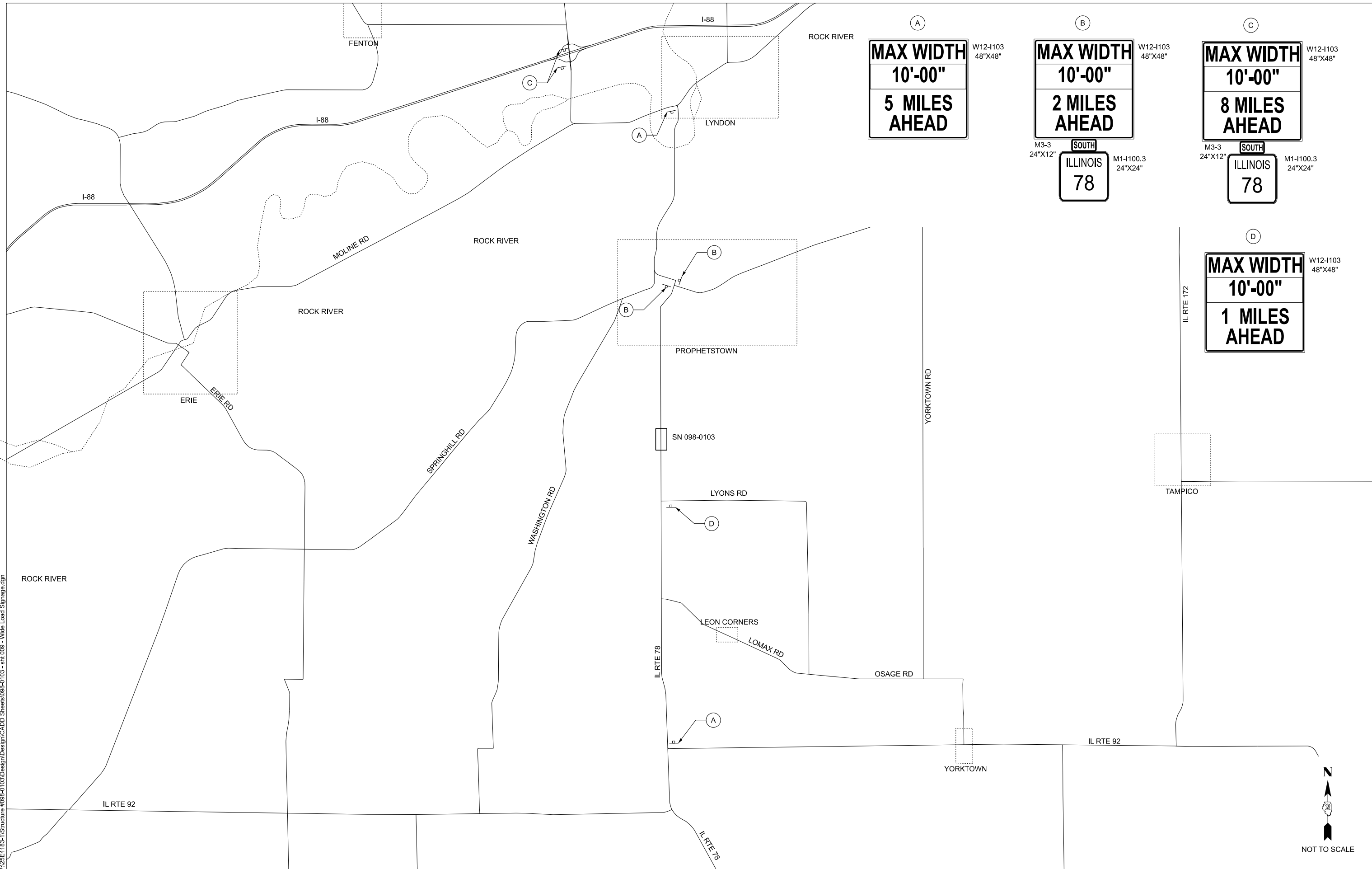
**GENERAL DATA
SN 098-0103 OVER COON CREEK**

SHEET 1 OF 1 SHEETS

F.A.I. RTE.	SECTION	COUNTY	TOTAL SHEETS	SHEET NO.
22	115 BR	WHITESIDE	26	8
CONTRACT NO. 64T46				
ILLINOIS FED. AID PROJECT				

USER NAME =	DESIGNED JTS	REVISED -
	CHECKED MBH	REVISED -
PLOT SCALE =	DRAWN JTS	REVISED -
PLOT DATE =	CHECKED MBH	REVISED -

MODEL: Wide Load Signage Plan (Sheet)
 FILE NAME: P:\26E4183-1\Structure #098-0103\Design\Design\CADD Sheets\098-0103 - sht 009 - Wide Load Signage.dgn



(A)
MAX WIDTH
10'-00"
5 MILES AHEAD

W12-1103
48"X48"

(B)
MAX WIDTH
10'-00"
2 MILES AHEAD

M3-3
24"X12"

SOUTH

ILLINOIS
78

M1-1100.3
24"X24"

(C)
MAX WIDTH
10'-00"
8 MILES AHEAD

M3-3
24"X12"

SOUTH

ILLINOIS
78

M1-1100.3
24"X24"

(D)
MAX WIDTH
10'-00"
1 MILES AHEAD

W12-1103
48"X48"



NOT TO SCALE

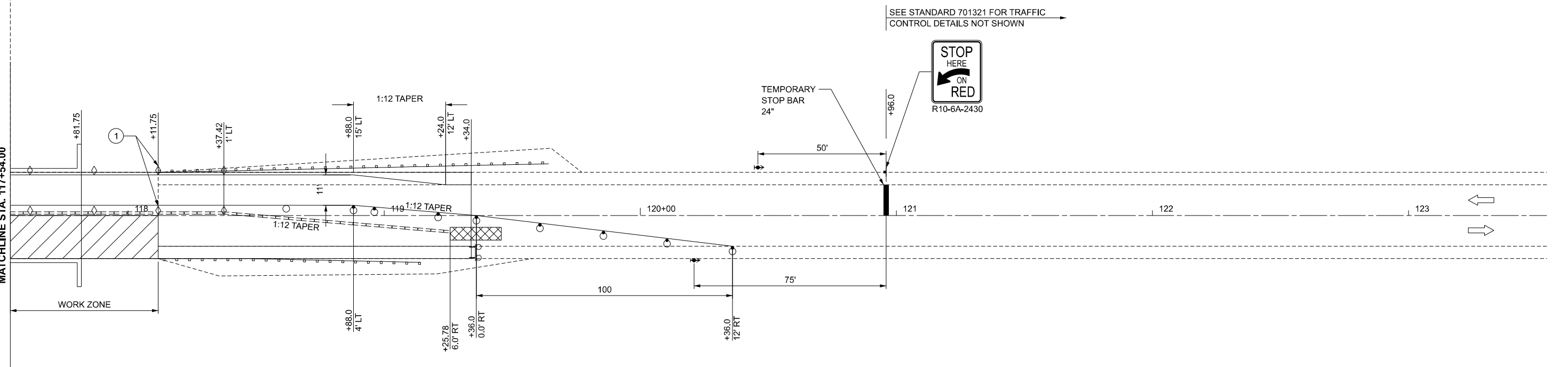
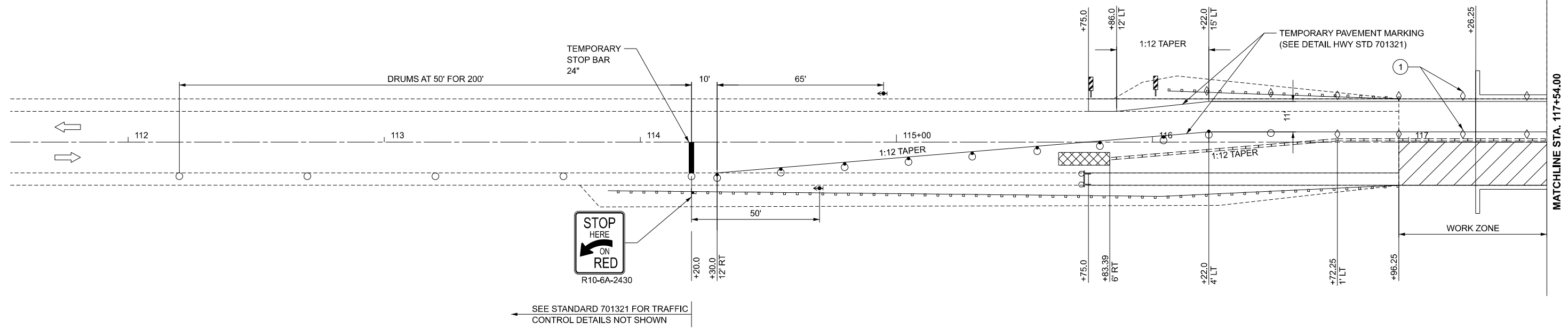
USER NAME = gsturjeon	DESIGNED - GJS	REVISED -
	DRAWN - GJS	REVISED -
	CHECKED - WJS	REVISED -
PLOT DATE = 3/23/2026	DATE -	REVISED -

STATE OF ILLINOIS
DEPARTMENT OF TRANSPORTATION


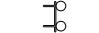




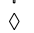
WIDE LOAD SIGNING PLAN
SN 098-0103

SCALE: SHEET 1 OF 1 SHEETS STA. TO STA.

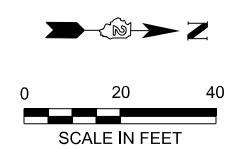
F.A.P. RTE.	SECTION	COUNTY	TOTAL SHEETS	SHEET NO.
22	115BR	WHITESIDE	26	9
CONTRACT NO. 64T46				
ILLINOIS FED. AID PROJECT				



SYMBOLS

-  WORK AREA
-  SIGN
-  TYPE III BARRICADE WITH FLASHING LIGHTS
-  TRAFFIC SIGNAL
-  IMPACT ATTENUATOR
-  TEMPORARY CONCRETE BARRIER
-  DRUM WITH STEADY BURNING BI-DIRECTIONAL LIGHT
-  DRUM
-  DOUBLE VERTICAL PANEL
-  CRYSTAL, BIDIRECTIONAL GUARDRAIL/BARRICADE WALL REFLECTOR

- ① GUARDRAIL/BARRIER WALL REFLECTORS AT 25' CENTERS. SEE STANDARD 704001 AND STANDARD 782006.
- ② VERTICAL PANELS AT 25' CENTERS THROUGHOUT LANE SHIFT WHERE GUARDRAIL IS NOT PRESENT.



MODEL: EXCL3 - Stage 1 Plan 1 [Sheet]
FILE NAME: P:\25E118-1\Structure #098-0103\Design\Design\CADD Sheets\098-0103 - sht.DXX - Staging.dgn

USER NAME = gsturjeon	DESIGNED - GJS	REVISED -
	DRAWN - GJS	REVISED -
	CHECKED - WJS	REVISED -
PLOT DATE = 3/23/2026	DATE -	REVISED -

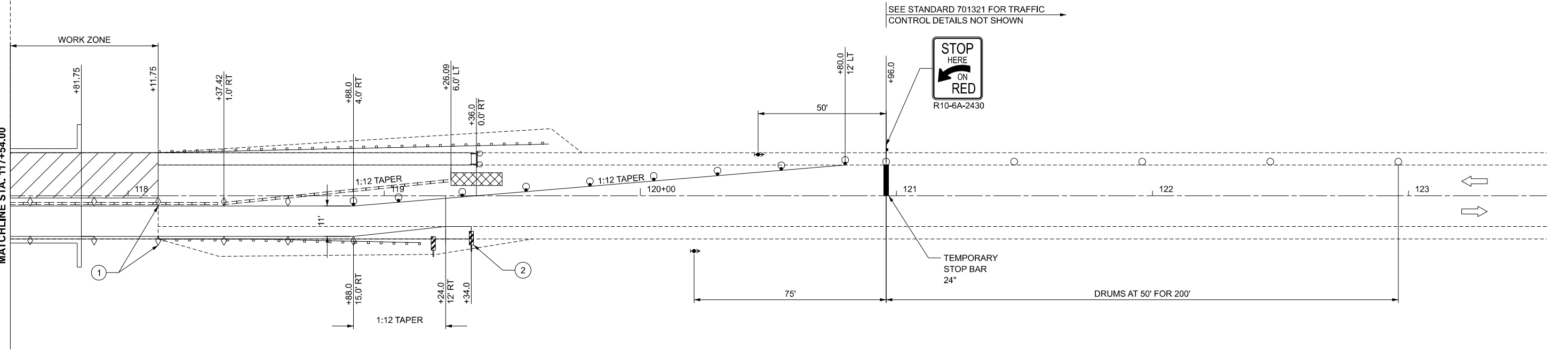
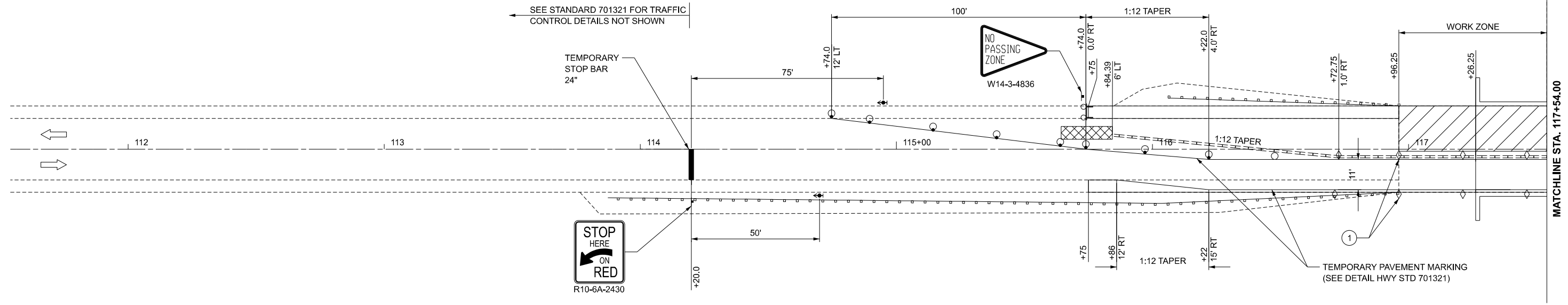
**STATE OF ILLINOIS
DEPARTMENT OF TRANSPORTATION**

**MAINTENANCE OF TRAFFIC - STAGE 1 PLANS
SN 098-0103 OVER COON CREEK**

SCALE: 1"=20' SHEET 1 OF 2 SHEETS STA. 111+54.00 TO STA. 123+54.00

F.A.P. RTE.	SECTION	COUNTY	TOTAL SHEETS	SHEET NO.
22	(115BR)BDR	WHITESIDE	26	10
CONTRACT NO. 64T46				
ILLINOIS FED. AID PROJECT				

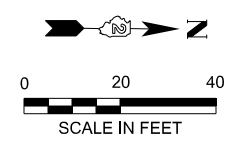
MODEL: EXCL4 - Stage 2 - Plan 3 (Sheet)
 FILE NAME: P:\26E183-1\Structure #098-0103\Design\Design\CADD Sheets\098-0103 - sht.DXX - Staging.dgn



SYMBOLS

- WORK AREA
- SIGN
- TYPE III BARRICADE WITH FLASHING LIGHTS
- TRAFFIC SIGNAL
- IMPACT ATTENUATOR
- TEMPORARY CONCRETE BARRIER
- DRUM WITH STEADY BURNING BI-DIRECTIONAL LIGHT
- DRUM
- DOUBLE VERTICAL PANEL
- CRYSTAL, BIDIRECTIONAL GUARDRAIL/BARRIER WALL REFLECTOR

- ① GUARDRAIL/BARRIER WALL REFLECTORS AT 25' CENTERS. SEE STANDARD 704001 AND STANDARD 782006.
- ② VERTICAL PANELS AT 25' CENTERS THROUGHOUT LANE SHIFT WHERE GUARDRAIL IS NOT PRESENT.



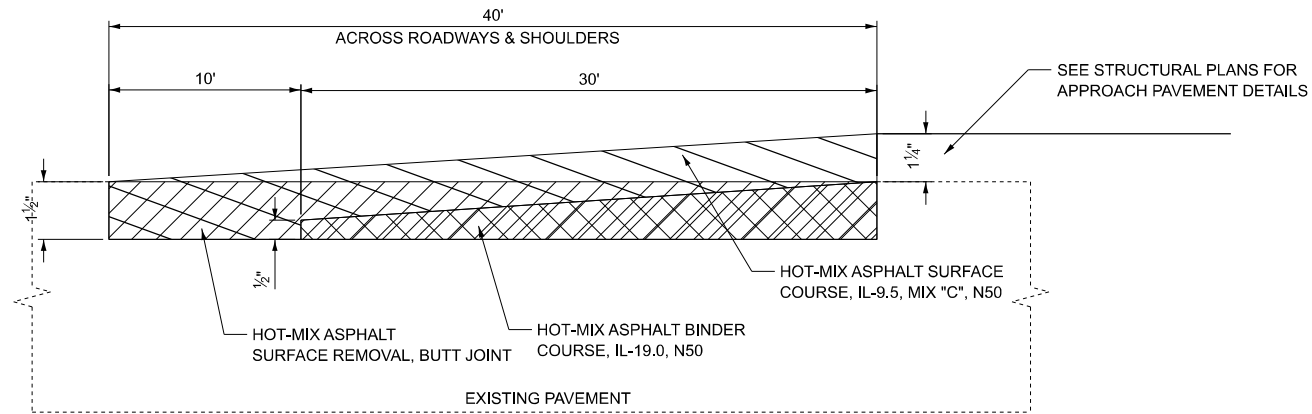
USER NAME = gsturjeon	DESIGNED - GJS	REVISED -
	DRAWN - GJS	REVISED -
	CHECKED - WJS	REVISED -
PLOT DATE = 3/23/2026	DATE -	REVISED -

**STATE OF ILLINOIS
 DEPARTMENT OF TRANSPORTATION**

**MAINTENANCE OF TRAFFIC - STAGE 2
 SN 098-0103 OVER COON CREEK**

SCALE: 1"=20' SHEET 2 OF 2 SHEETS STA. 111+54.00 TO STA. 123+54.00

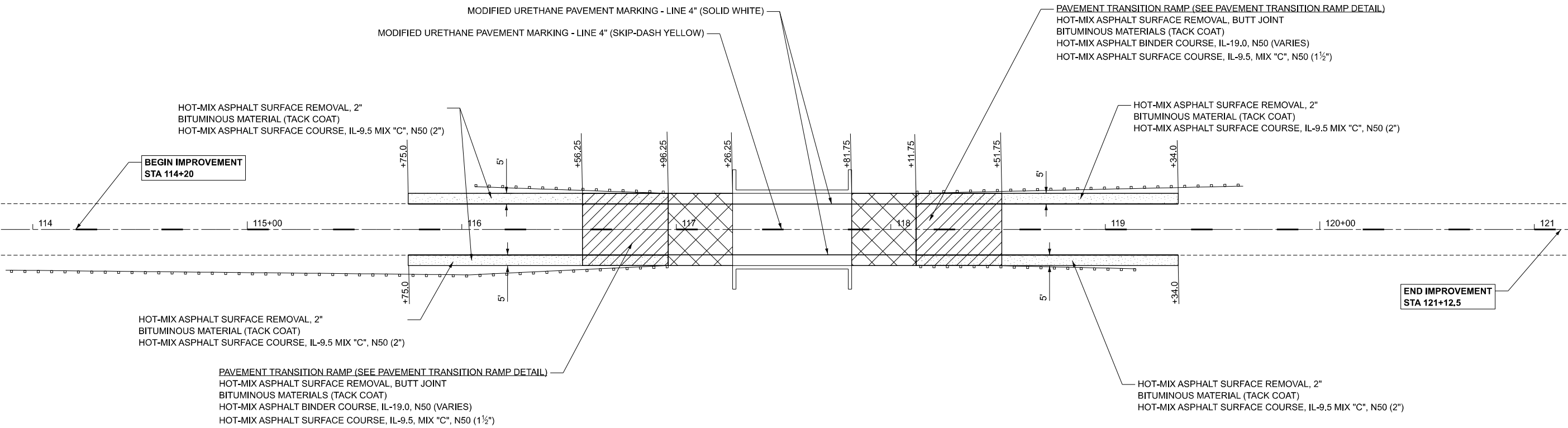
F.A.P. RTE. 22	SECTION (115BR)BDR	COUNTY WHITESIDE	TOTAL SHEETS 26	SHEET NO. 11
CONTRACT NO. 64T46				
ILLINOIS FED. AID PROJECT				



PAVEMENT TRANSITION RAMP DETAIL

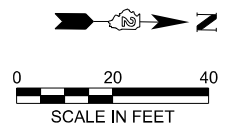
STA 116+56.25 TO STA 116+96.25
 STA 118+11.75 TO STA 118+51.75

NOTE:
 PRE-STAGE - SHOULDER REPAVING
 POST STAGE - PAVEMENT TRANSITION RAMP
 - PERMENT PAVEMENT MARKING



LEGEND

- BRIDGE APPROACH PAVEMENT
- PAVEMENT TRANSITION RAMP
- SHOULDERS



MODEL: SN 098-0103 (Sheet)
 FILE NAME: P:\25E4183-1\Structure #098-0103\Design\Design\CADD Sheets\098-0103 - sht 012 - Roadway Plan.dgn

USER NAME = gsturjeon	DESIGNED - MBH	REVISED -
	DRAWN - GJS	REVISED -
	CHECKED - WJS	REVISED -
PLOT DATE = 3/23/2026	DATE -	REVISED -

**STATE OF ILLINOIS
 DEPARTMENT OF TRANSPORTATION**

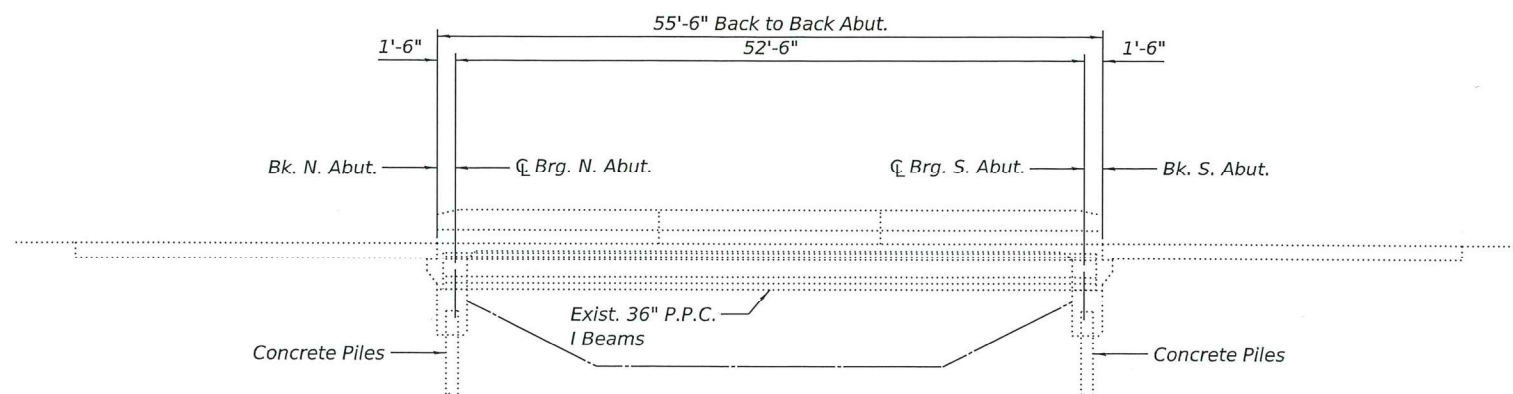
**ROADWAY PLAN
 SN 098-0103 OVER COON CREEK**

SCALE: SHEET 1 OF 1 SHEETS STA. TO STA.

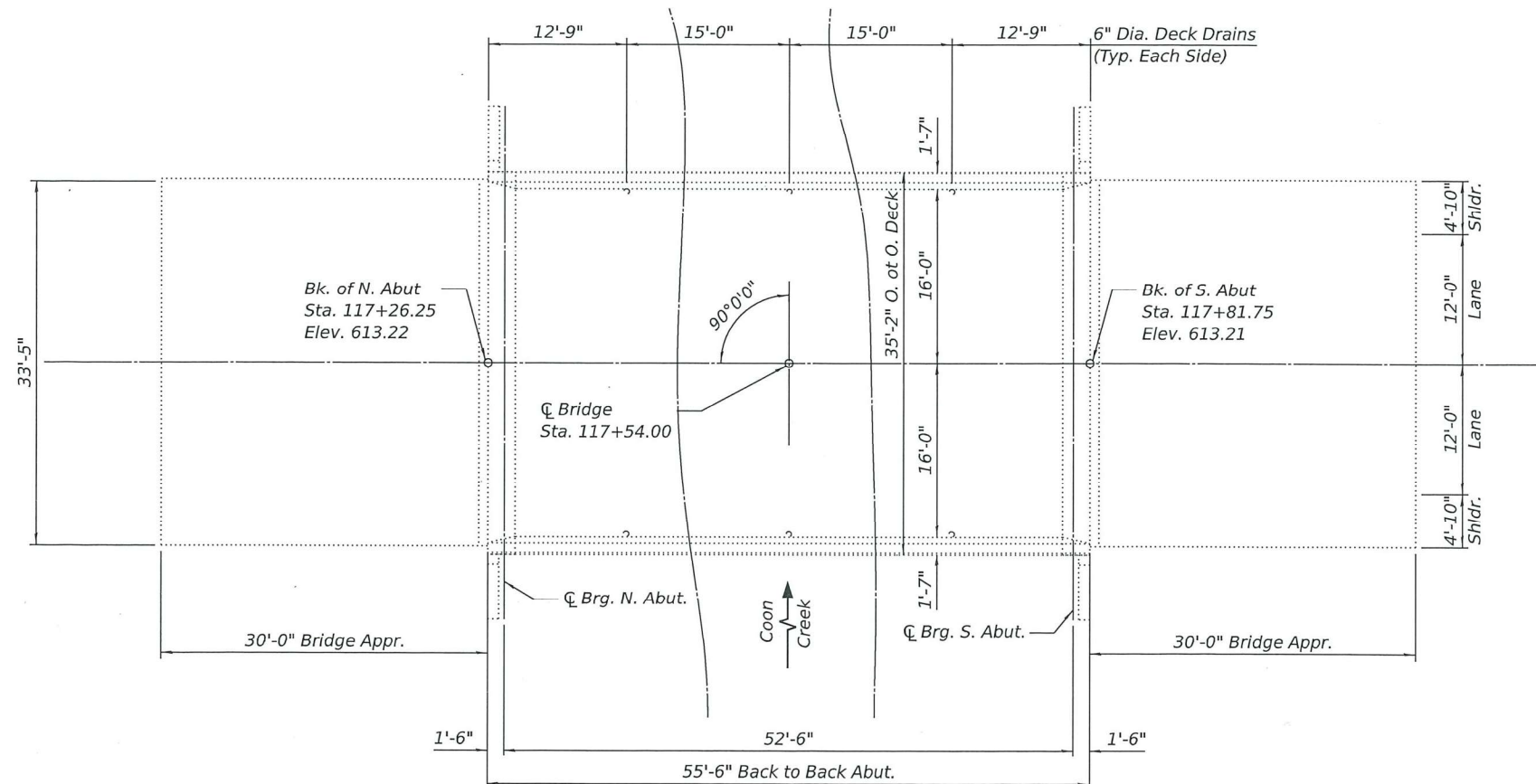
F.A.P. RTE.	SECTION	COUNTY	TOTAL SHEETS	SHEET NO.
22	(115BR)BRR	OGLE	26	12
CONTRACT NO. 64T46				
		ILLINOIS	FED. AID PROJECT	

Existing Structure: Structure 098-0103 was constructed in 1996 as part of project BRF-22. The existing structure consist of a single span superstructure with 36" P.P.C I beams and 7½" concrete deck. The bridge is 55'-6" from back to back of abutments. The overall bridge width is 35'-2" out to out with 32'-0" roadway width. The bridge has no skew. The substructure consist of reinforced concrete bent abutments supported on reinforced concrete piles.

Traffic to be maintained utilizing stage construction.



ELEVATION



PLAN

SCOPE OF WORK

1. Perform ¾" bridge deck scarification.
2. Perform full depth deck repairs and partial depth approach repairs
3. Fill voids below approach slab.
4. Place 2¼" bridge deck latex overlay.
5. Perform ¼" diamond grinding on deck overlay.
6. Perform bridge deck grooving (longitudinal) on deck overlay.
7. Apply protective coat to deck and parapets.

INDEX OF SHEETS

- | | |
|---|----------------------------|
| 1 | General Plan and Elevation |
| 2 | General Data |
| 3 | Temporary Concrete Barrier |
| 4 | Deck Repair |

DESIGN SPECIFICATIONS (EXIST.)

1992 AASHTO with 1993 thru 1994 Interim Specifications

DESIGN STRESSES (EXIST.)

FIELD UNITS
f'c = 3,500 psi
fy = 60,000 psi (Reinforcement)

PRECAST PRESTRESSED UNITS

f'c = 6,000 psi
fci = 5000 psi
fs = 270,000 psi (½Ø strands)
fsl = 201,960 psi (½Ø strands)

DESIGN STRESSES (NEW CONST.)

FIELD UNITS
f'c = 4,000 psi (Superstructure)
f'c = 3,500 psi (Substructure)
fy = 60,000 psi (Reinforcement)

LOADING HS20-44

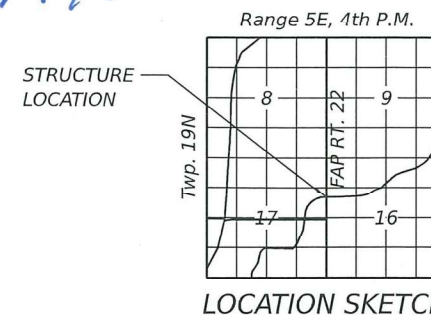
Existing



PROFILE GRADE

(Along Cl IL 78)
For information only

Up to ¼ inch to be ground off the bridge deck and the bridge approach slabs. The Profile Grade shows the final grade after grinding.



GENERAL PLAN AND ELEVATION
IL RT. 78 OVER COON CREEK
FAP RT. 22 SECTION (115BR)BRR
WHITESIDE COUNTY
STATION 117+54
STRUCTURE NO. 098-0103

MODEL: Sheet 1
FILE NAME: \\P25E4183-1\Structure\098-0103\Design\CADD\Sheets\Structural\098-0103-0264146-013_General Plan and Elevation.dgn

BENTON
ENGINEERING
ILLINOIS DESIGN PROFESSIONAL REGISTRATION NO. 044000022

USER NAME = clocher	DESIGNED JTS	REVISED -
PLOT SCALE = Full Size 1 = 1	CHECKED MBH	REVISED -
PLOT DATE = 5/8/2026	DRAWN JTS	REVISED -
	CHECKED MBH	REVISED -

STATE OF ILLINOIS
DEPARTMENT OF TRANSPORTATION

GENERAL PLAN AND ELEVATION
SN 098-0103 OVER COON CREEK

SHEET 1 OF 4 SHEETS

F.A.P. RTE.	SECTION	COUNTY	TOTAL SHEETS	SHEET NO.
22	(115BR)BRR	WHITESIDE	26	13
ILLINOIS			FED. AID PROJECT	

GENERAL NOTES

Prior to pouring the new concrete deck, all heavy or loose rust, loose mill scale, and other loose detrimental foreign material shall be removed from the surfaces in contact with concrete (SSPC-SP3 standards). Tightly adhered paint may remain unless otherwise noted. Removal shall be accomplished by methods that will not damage the steel and the cost will be paid for according to Article 109.04 of the Standard Specifications.

Plan dimensions and details relative to the existing structure have been taken from existing plans and are subject to nominal construction variations. The Contractor shall field verify existing dimensions and details affecting new construction and make necessary approved adjustments prior to construction or ordering of materials. Such variations shall not be cause for additional compensation for a change in scope of the work; however, the Contractor will be paid for the quantity actually furnished at the unit price bid for the work.

Existing reinforcement bars extending into the removal area shall be cleaned, straightened, and incorporated into the new construction. Any reinforcement bars that are damaged during concrete removal shall be replaced with an approved bar splicer or anchorage system at the contractor's expense.

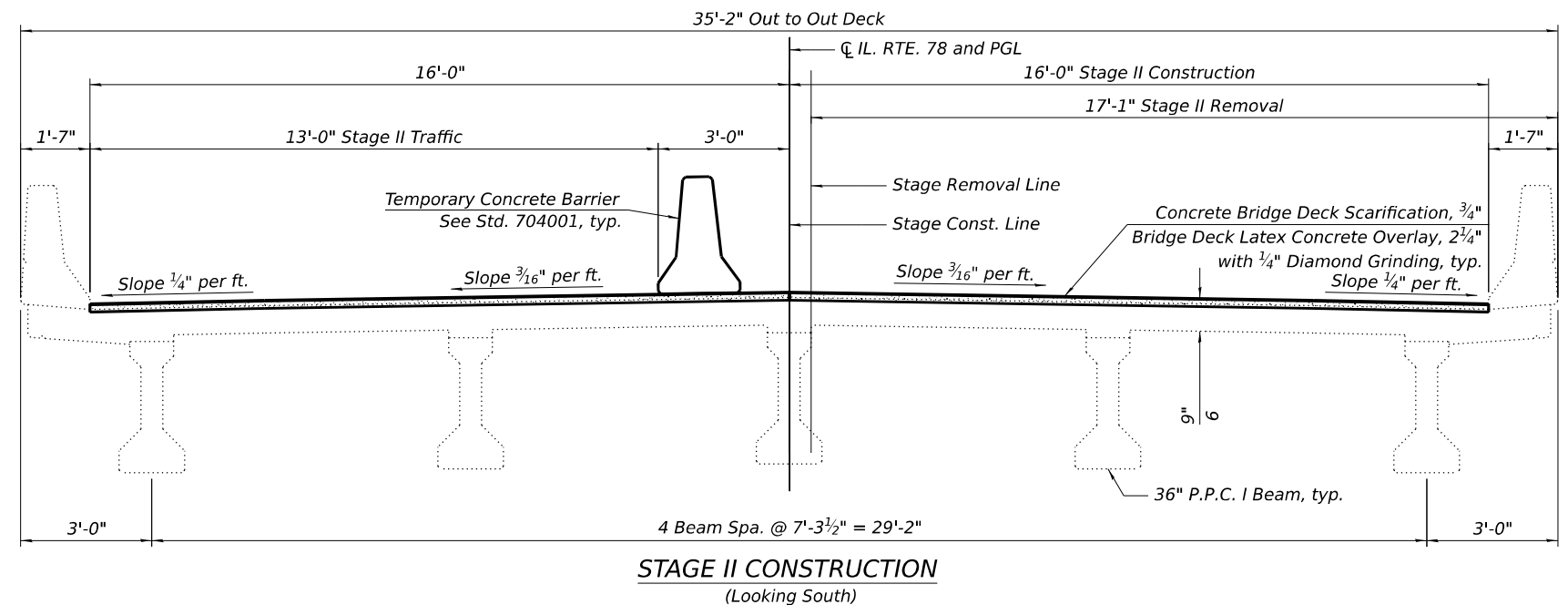
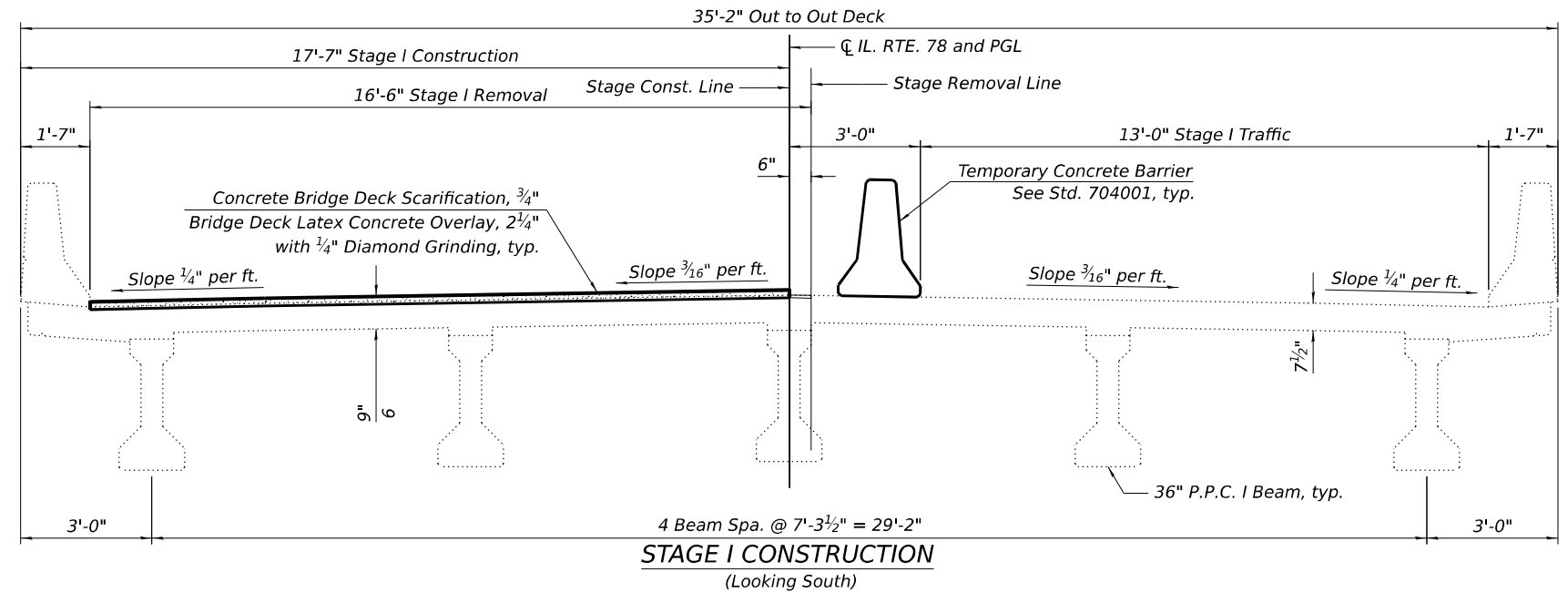
The minimum thickness of the concrete overlay shall be 2 1/4" and varies as required to adjust for the existing profile grade and beam chamber.

The Contractor shall use extreme care during concrete removal so as to not damage the PPC I-Beam.

Areas of deck repairs shown are estimated. The Engineer shall show actual locations and size of deck repairs on As-built Plans

The contractor shall take all necessary precautions for the protection of existing plant material for which the contract does not provide removal. The protection of existing plant material and the repair or replacement of existing plant material damaged by the contractor shall be done in accordance with the requirements of section 01 of the standard specifications

The contractor shall use extreme care in removing or excavating near all existing items which will remain. Any damage done to existing items by the contractor shall be repaired at the contractors expense.



TOTAL BILL OF MATERIAL

ITEM	UNIT	SUPER	SUB	TOTAL
Protective Coat	SQ YD	464		464
Deck Slab Repair (Full Depth, Type I)	SQ YD	1		1
Bridge Deck Latex Concrete Overlay, 2 1/4 Inches	SQ YD	422		422
Bridge Deck Scarification 3/4"	SQ YD	422		422
Epoxy Crack Injection	FOOT	71		71
Controlled Low-Strength Material	CU YD	2		2
Bridge Deck Grooving (Longitudinal)	SQ YD	308		308
Approach Slab Repair (Partial Depth)	SQ YD	1		1
Diamond Grinding (Bridge Section)	SQ YD	370		370
Joint Repair	Each	4		4

MODEL: Sheet 1
FILE NAME: P:\2024\183-1\Structure\098-0103\Design\Design\CADD_Sheets\Structural\09801-03-D26-IT-16-014_General Data.dgn



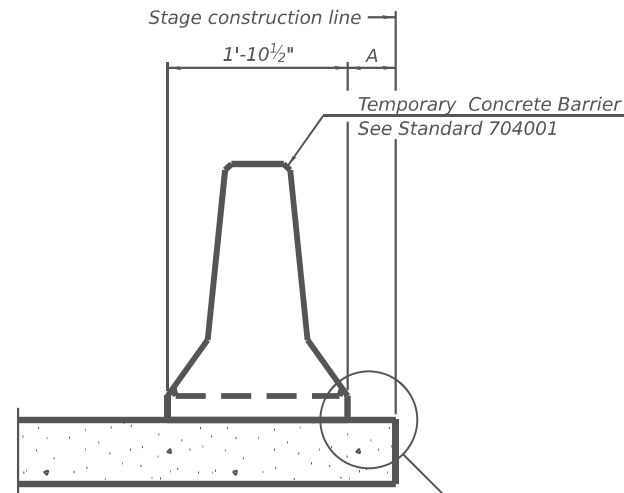
USER NAME = clocher	DESIGNED JTS	REVISED -
	CHECKED MBH	REVISED -
PLOT SCALE = Full Size 1 = 1	DRAWN JTS	REVISED -
PLOT DATE = 5/8/2026	CHECKED MBH	REVISED -

**STATE OF ILLINOIS
DEPARTMENT OF TRANSPORTATION**

**GENERAL DATA
SN 098-0103 OVER COON CREEK**

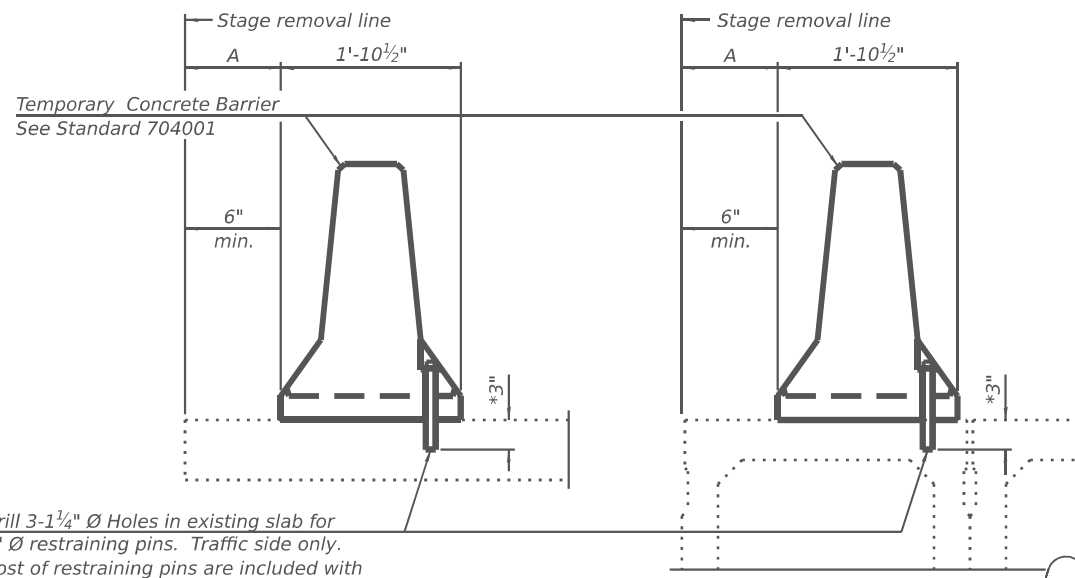
SHEET 2 OF 4 SHEETS

F.A.P. RTE. 22	SECTION (115BR)BRR	COUNTY WHITESIDE	TOTAL SHEETS 26	SHEET NO. 14
CONTRACT NO. 64T46			ILLINOIS FED. AID PROJECT	



When "A" is 3'-1" or less, the temporary concrete barrier shall be restrained to the new slab according to Detail I, II or III. No restraint is required when "A" is greater than 3'-1".

NEW SLAB OR NEW DECK BEAM



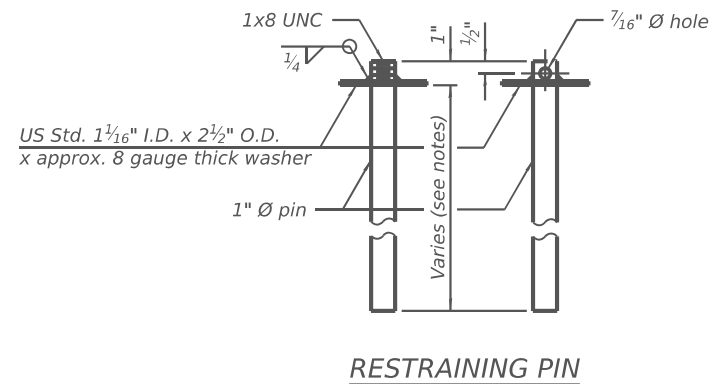
Drill 3-1/4" Ø Holes in existing slab for 1" Ø restraining pins. Traffic side only. Cost of restraining pins are included with Temporary Concrete Barrier. No restraint is required when "A" is greater than 3'-1".

* When hot-mix asphalt wearing surface is present, embedment shall be 3" plus the wearing surface depth.

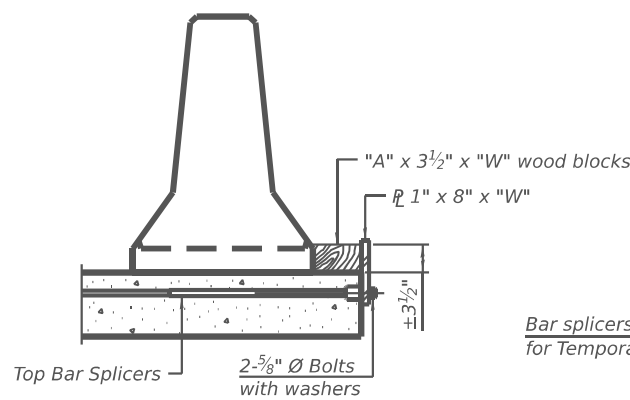
EXISTING SLAB

EXISTING DECK BEAM

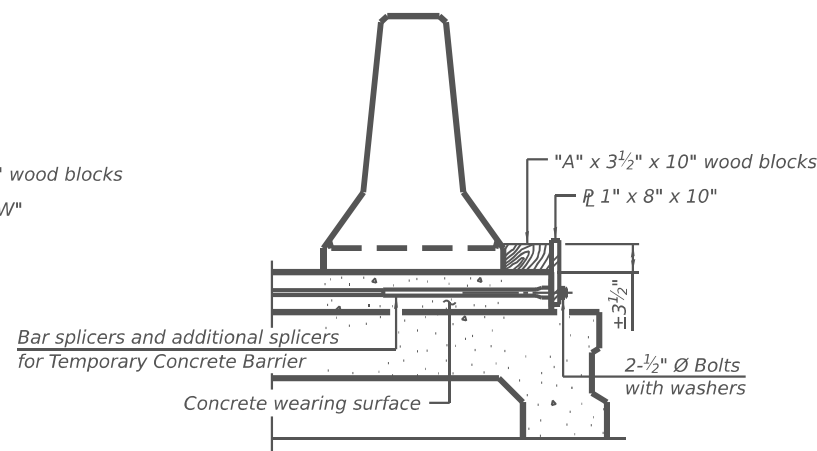
SECTIONS THRU SLAB OR DECK BEAM



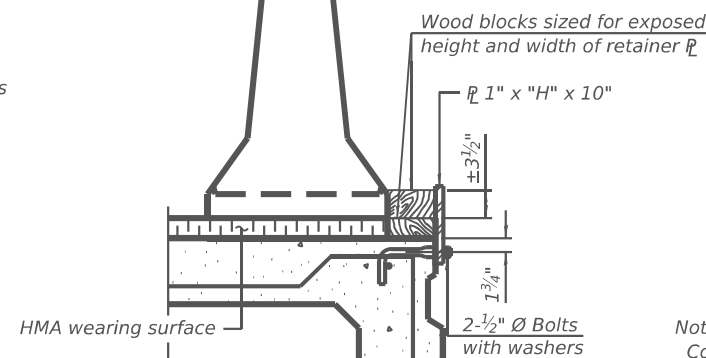
RESTRAINING PIN



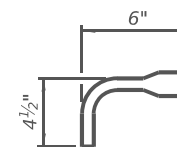
DETAIL I



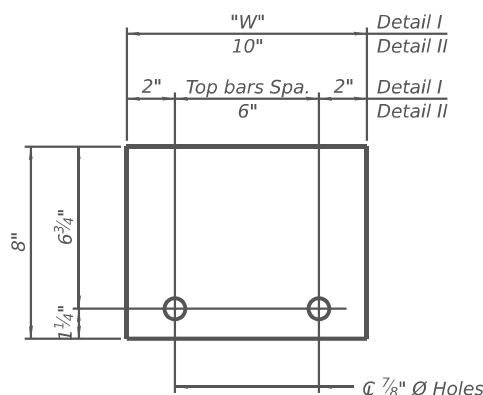
DETAIL II



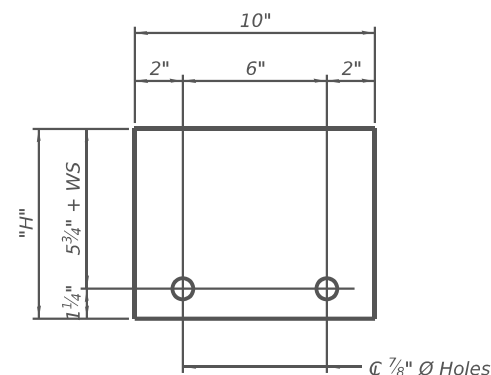
DETAIL III



BAR SPLICER FOR #4 BAR - DETAIL III



STEEL RETAINER 1" x 8" x "W" (Detail I and II)



STEEL RETAINER 1" x "H" x 10" (Detail III)

Notes:
 Cost of retainer assembly is included with Temporary Concrete Barrier.
 A retainer assembly shall be located at the approximate C of each temporary concrete barrier.
 The retainer plate shall not be removed until the concrete on the adjacent stage is ready to be poured. For Detail III applications the retainer plate shall not be removed until just prior to placing the adjacent beam.
 When the 'A' dimension is less than 1 1/2", the wood block shall be omitted and the barrier shall be placed in direct contact with the steel retainer plate. For deck beam applications the minimum required 'A' distance is 6" to accommodate the shear key clamping device.

Detail I - Installation for a new bridge deck or bridge slab.

Detail II - Installation for a new deck beam with an initial concrete wearing surface. Additional bar splicers shall be provided at 6'-0" centers and paired with the bar splicers of the concrete wearing surface reinforcement to accommodate the installation of the retainer assemblies. The cost of the additional bar splicers is included with the concrete wearing surface.

Detail III - Installation for a new deck beam with no initial wearing surface or with an initial hot-mix asphalt (HMA) wearing surface present. The deck beam directly beneath the temporary concrete barrier shall be fabricated with bar splicer inserts in the side of the beam, as detailed, to accommodate the installation of the retainer assemblies. A pair of bar splicers, 6" apart, shall be placed at 6'-0" centers along the length of the beam. The cost of the bar splicers is included with the deck beam.

RAILING CRITERIA

NCHRP 350 Test Level	3
Railing Weight (plf)	440

R-27 5-15-2023

MODEL: Sheet 1 FILE NAME: P:\2024\183-1\Drawings\Plans\098-0103\0980103-0264T15-015 - Temporary Concrete Barrier.dwg



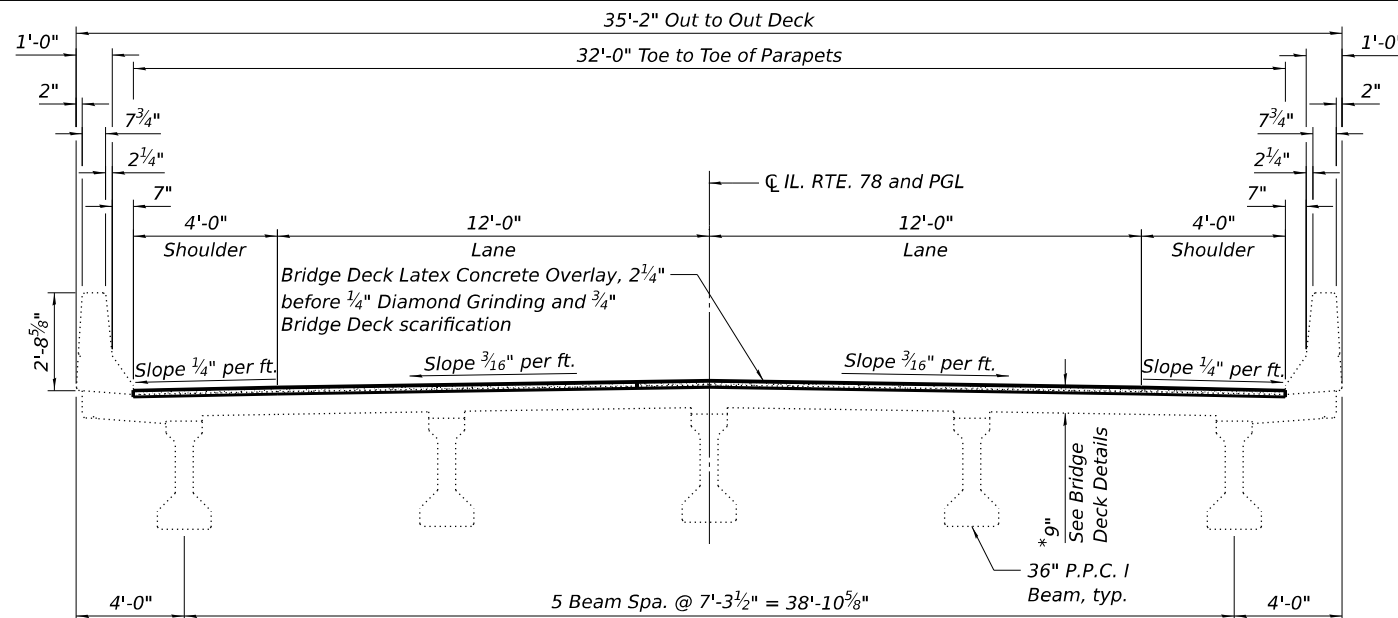
USER NAME =	pdlsdr	DESIGNED	JTS	REVISED	-
		CHECKED	MBH	REVISED	-
PLOT SCALE =	Full Size 1 = 1	DRAWN	JTS	REVISED	-
PLOT DATE =	3/19/2026	CHECKED	MBH	REVISED	-

STATE OF ILLINOIS
DEPARTMENT OF TRANSPORTATION

TEMPORARY CONCRETE BARRIER
SN 098-0103 OVER COON CREEK

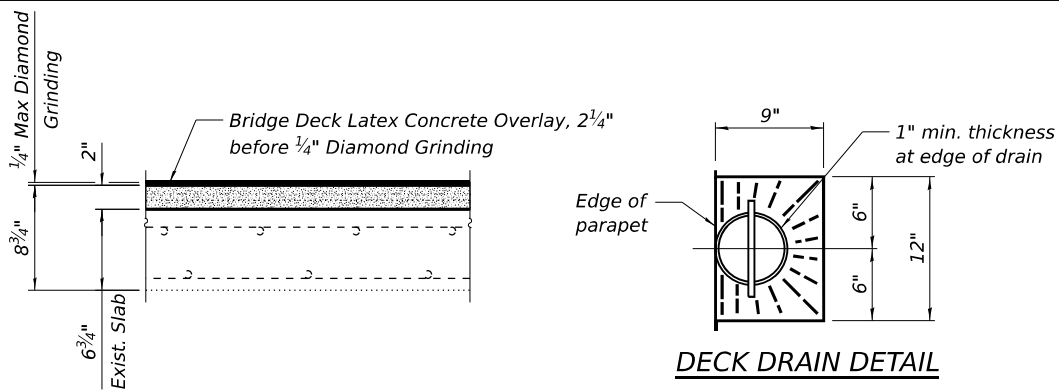
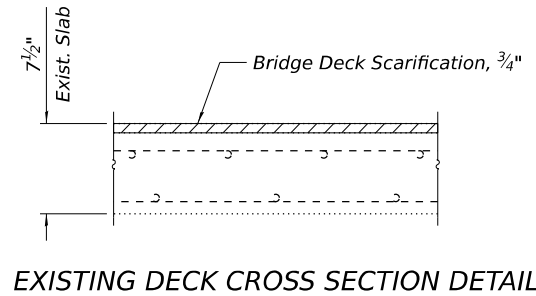
SHEET 3 OF 4 SHEETS

F.A.P. RTE.	SECTION	COUNTY	TOTAL SHEETS	SHEET NO.
22	(115BR)BRR	WHITESIDE	26	15
CONTRACT NO. 64T46				
ILLINOIS		FED. AID PROJECT		



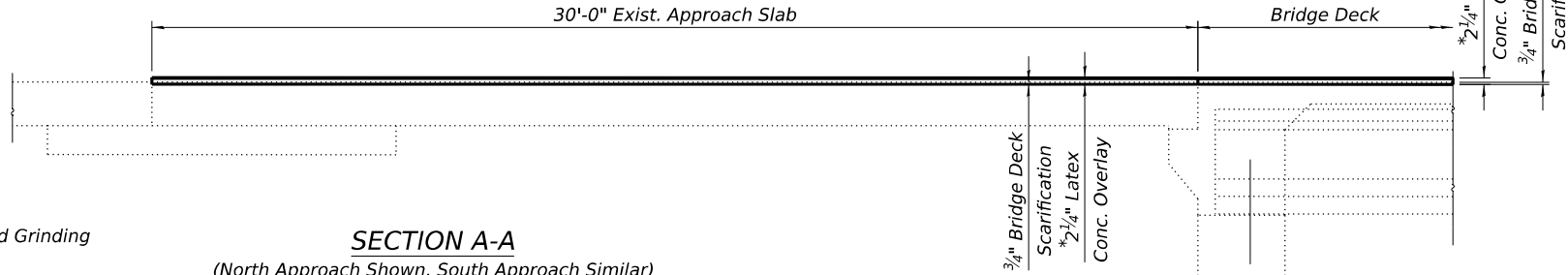
* Prior to 1/4" Diamond Grinding

CROSS SECTION
Looking North



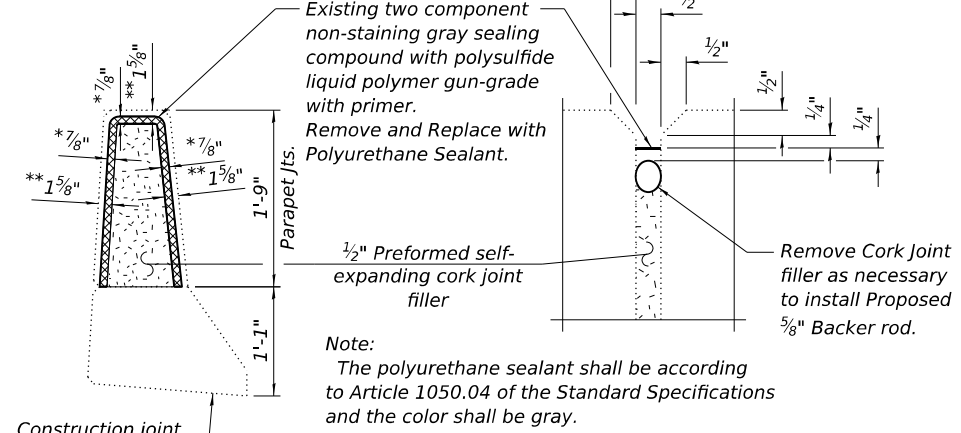
PROPOSED DECK CROSS SECTION DETAIL

DECK DRAIN DETAIL



* Prior to 1/4" Diamond Grinding

SECTION A-A
(North Approach Shown, South Approach Similar)



PARAPET JOINT DETAILS

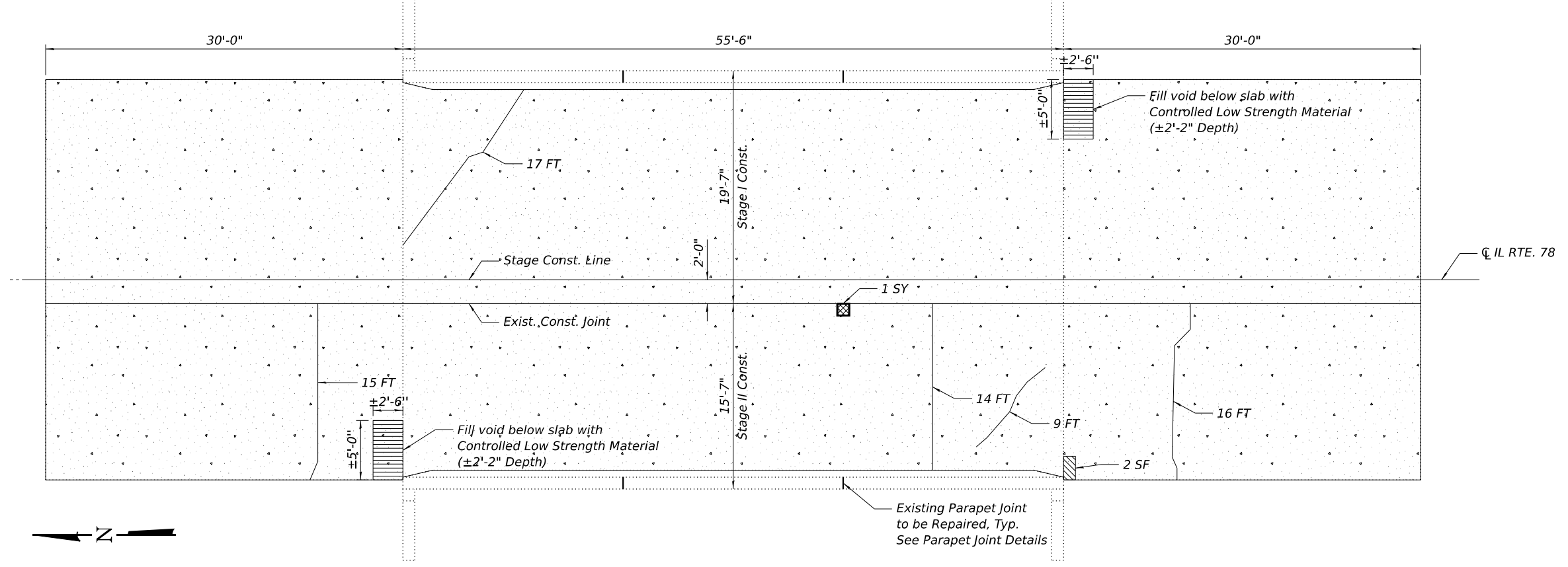
BILL OF MATERIAL

ITEM	UNIT	TOTAL
Protective Coat	SQ YD	464
Deck Slab Repair (Full Depth, Type I)	SQ YD	1
Bridge Deck Latex Concrete Overlay, 2 1/4 Inches	SQ YD	422
Bridge Deck Scarification 3/4"	SQ YD	422
Epoxy Crack Injection	FOOT	71
Controlled Low-Strength Material	CU YD	2
Bridge Deck Grooving (Longitudinal)	SQ YD	308
Approach Slab Repair (Partial Depth)	SQ YD	1
Diamond Grinding (Bridge Section)	SQ YD	370
Joint Repair	EACH	4

Notes:
Protective coat shall be applied to the top surface of the concrete overlay and to the concrete at the proposed joint replacement. It shall also be applied to the top and inside vertical faces of new and existing parapet.

LEGEND

- Bridge Deck Scarification, 3/4"
- Bridge Deck Latex Concrete Overlay, 2 1/4"
- Bridge Deck Scarification, 3/4"
Bridge Deck Latex Concrete Overlay, 2 1/4"
- Approach Slab Repair (Partial Depth)
- Fill void below slab with Controlled Low Strength Material
- Deck Slab Repair (Full Depth, Type I)
- Epoxy Crack Injection



PLAN

MODEL: Sheet 1
FILE NAME: P:\05E4183-1\Structure #098-0103\Design\Design\CADD_Sheets\Structural\09801-03-D26-IT-016_Deck_Repair.dgn



USER NAME = clocher	DESIGNED JTS	REVISED -
PLOT SCALE = Full Size 1 = 1	CHECKED MBH	REVISED -
PLOT DATE = 5/8/2026	DRAWN JTS	REVISED -
	CHECKED MBH	REVISED -

STATE OF ILLINOIS
DEPARTMENT OF TRANSPORTATION

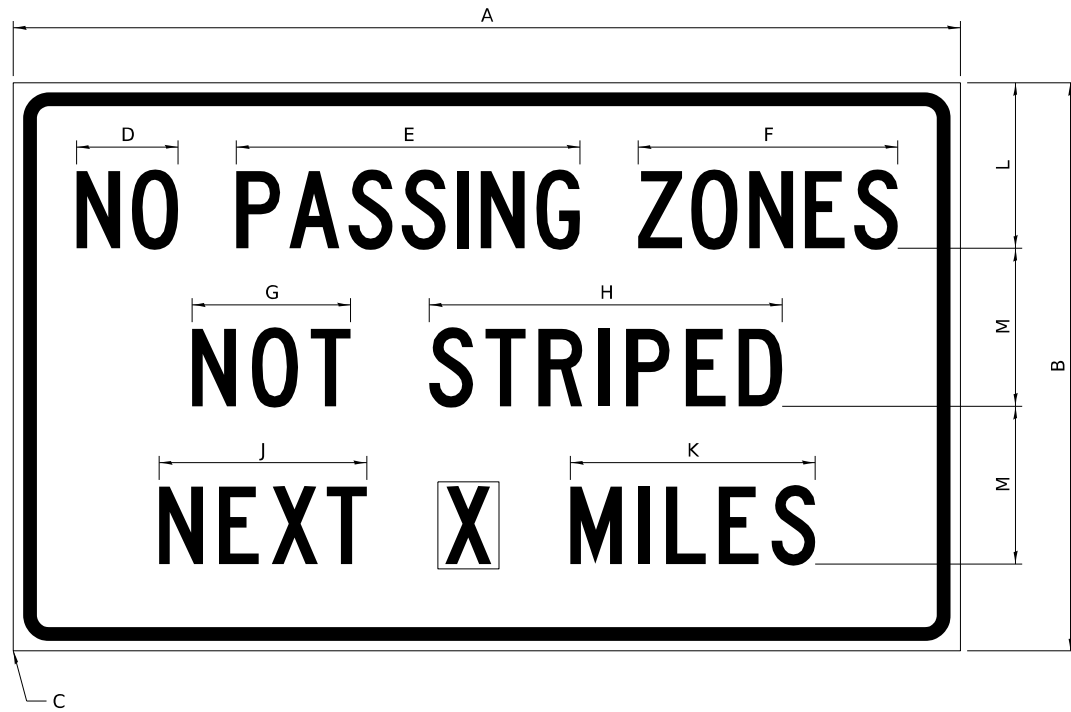
DECK REPAIR
SN 098-0103 OVER COON CREEK

SHEET 4 OF 4 SHEETS

F.A.P. RTE.	SECTION	COUNTY	TOTAL SHEETS	SHEET NO.
22	(115BR)BRR	WHITESIDE	26	16
CONTRACT NO. 64T46				
ILLINOIS FED. AID PROJECT				

WORK ZONE SIGN DETAILS

ILLINOIS STANDARD G20-I100(F0)



COLOR LEGEND AND BORDER BACKGROUND BLACK ORANGE NON-REFLECTORIZED REFLECTORIZED

SIGN SIZE	DIMENSIONS											
	A	B	C	D	E	F	G	H	J	K	L	M
60 x 36	60.00	36.00	2.25	6.4	21.80	16.40	10.00	22.40	13.20	15.50	10.50	10.00

SIGN SIZE	SERIES BY LINE			MARGIN	BORDER
	1	2	3		
60 x 36	5C	5C	5C	0.625	0.875

Sign not to scale

GENERAL NOTES

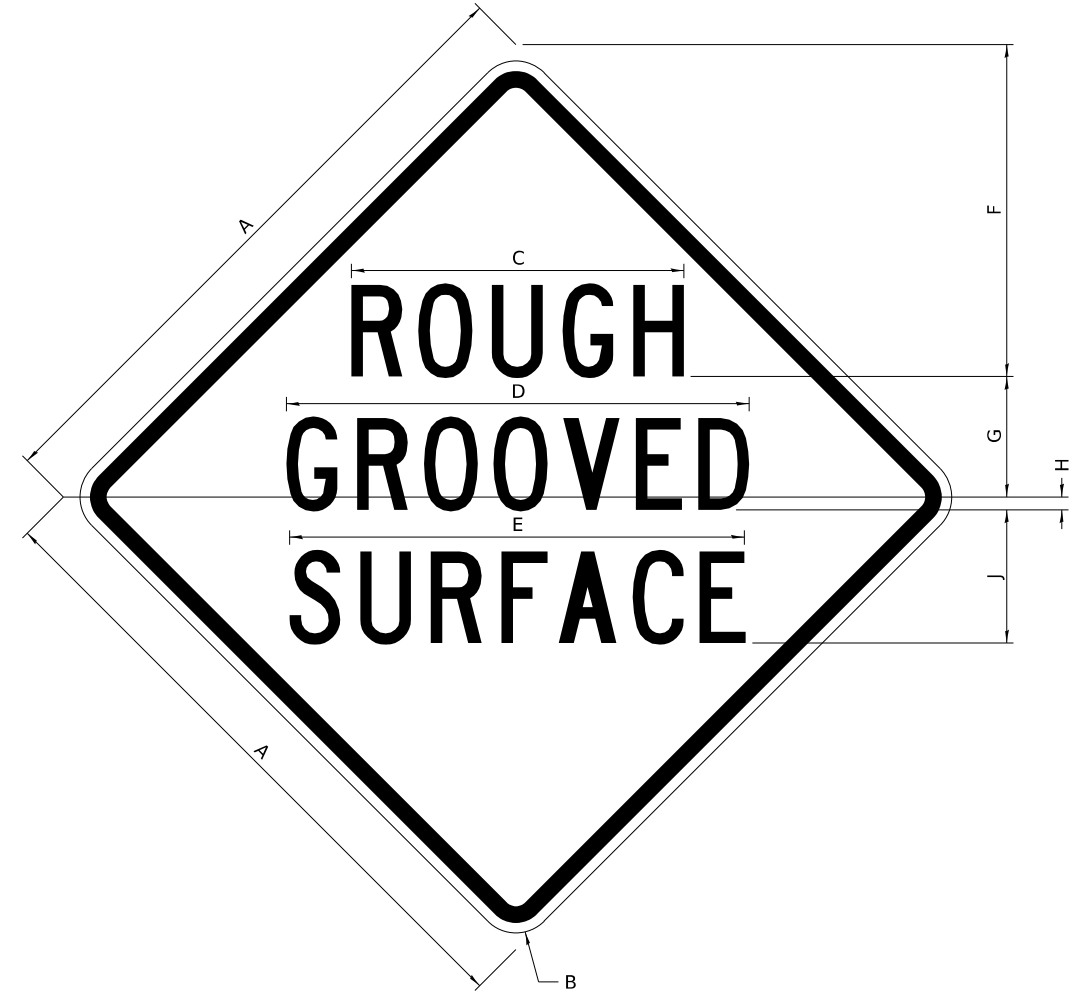
All work to furnish and install these signs shall be included in the cost of the specified traffic control standards and shall not be paid separately.

All Illinois Standard signs shall conform to the latest edition of the "Illinois Standard Highway Signs Book" in effect on the date of invitation for bids.

Signs shall meet the applicable portions of Sections 701 and 720 of the Standard Specifications.

All dimensions are in inches unless otherwise noted.

ILLINOIS STANDARD W8-I107



COLOR LEGEND AND BORDER BACKGROUND BLACK ORANGE NON-REFLECTORIZED REFLECTORIZED

SIGN SIZE	DIMENSIONS								
	A	B	C	D	E	F	G	H	J
48 x 48	48.00	3.00	25.00	34.80	34.20	24.94	9.00	1.00	10.00

SIGN SIZE	SERIES BY LINE			MARGIN	BORDER
	1	2	3		
48 x 48	7C	7C	7C	1.250	0.750

Sign not to scale

MODEL: D2 34.1 (Sheet) FILE NAME: P:\2025\183-1\Structure #098-0103\Design\CADD Sheets\098-0103-sht 017-sht 026-D2 Standards.dgn

USER NAME = gsturjeon	DESIGNED -	REVISED - 5-22-25
	DRAWN -	REVISED - 3-02-16
	CHECKED -	REVISED -
PLOT DATE = 1/29/2026	DATE -	REVISED -

**STATE OF ILLINOIS
DEPARTMENT OF TRANSPORTATION**

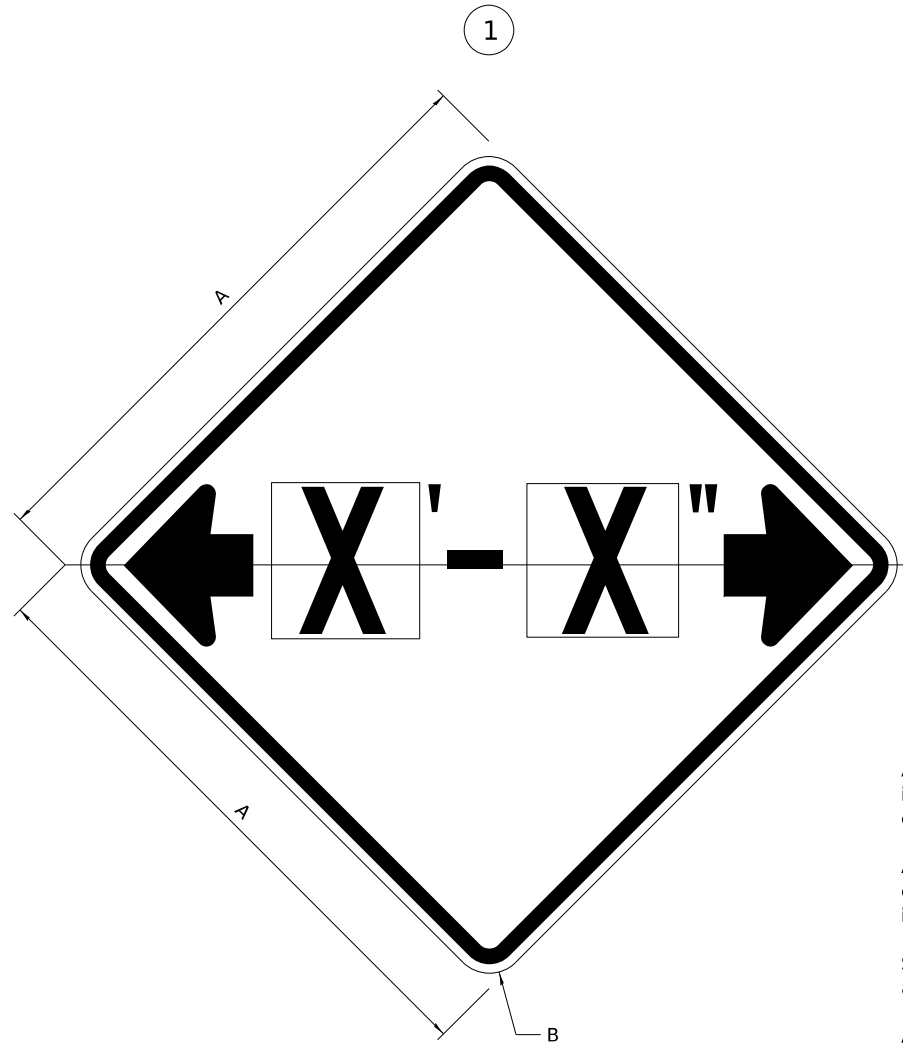
**D2 DETAILS
SN 098-0103**

SCALE: SHEET 1 OF 4 SHEETS STA. TO STA.

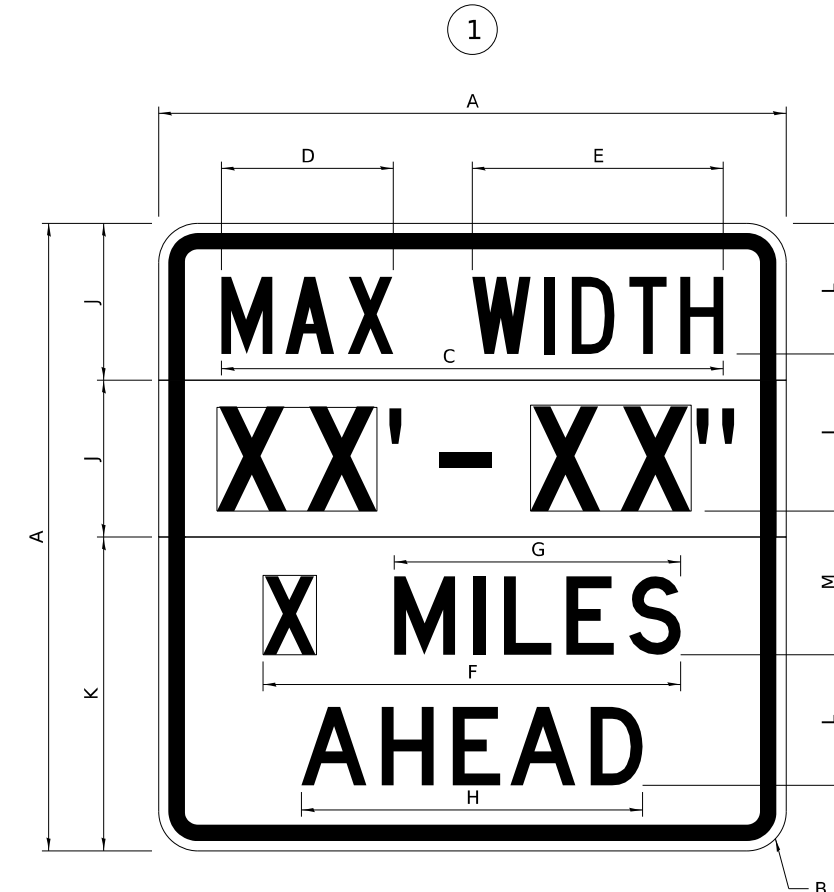
F.A.P. RTE.	SECTION	COUNTY	TOTAL SHEETS	SHEET NO.
22	(115BR)BRR	WHITESIDE	26	17
CONTRACT NO. 64T46				
ILLINOIS FED. AID PROJECT				

WORK ZONE SIGN DETAILS

ILLINOIS STANDARD W12-I102



ILLINOIS STANDARD W12-I103



GENERAL NOTES

All work to furnish and install these signs shall be included in the cost of the specified traffic control standards and shall not be paid separately.

All Illinois Standard signs shall conform to the latest edition of the "Illinois Standard Highway Signs Book" in effect on the date of invitation for bids.

Signs shall meet the applicable portions of Sections 701 and 720 of the Standard Specifications.

All dimensions are in inches unless otherwise noted.

COLOR LEGEND AND BORDER BACKGROUND BLACK FL ORANGE NON-REFLECTORIZED REFLECTORIZED

SIGN SIZE	DIMENSIONS	
	A	B
48 x 48	48.00	3.00

① Illinois Standard signs W12-I102 and W12-I103 shall be used as described in the special provisions.

SIGN SIZE	SERIES BY LINE	MARGIN	BORDER
	1		
48 x 48	12C	0.750	1.250

Sign not to scale

COLOR LEGEND AND BORDER BACKGROUND BLACK WHITE FL ORANGE NON-REFLECTORIZED REFLECTORIZED REFLECTORIZED

SIGN SIZE	DIMENSIONS											
	A	B	C	D	E	F	G	H	J	K	L	M
48 x 48	48.00	3.00	38.40	13.20	19.20	32.00	22.00	26.20	12.00	24.00	10.00	11.00

SIGN SIZE	SERIES BY LINE				MARGIN	BORDER
	1	2	3	4		
48 x 48	6C	8D	6D	6D	0.750	1.250

Sign not to scale

XX'-XX" WIDTH AND X MILES ARE VARIABLE TOP AND BOTTOM OF BACKGROUND WHITE

MODEL: D2 34.1 - 2 (Sheet)
FILE NAME: P:\26E4183-1\Structure #098-0103\Design\CADD Sheets\098-0103 - sht 017 - sht 026 - D2 Standards.dgn

USER NAME = gsturjeon	DESIGNED -	REVISED - 3-02-16
	DRAWN -	REVISED -
	CHECKED -	REVISED -
PLOT DATE = 1/29/2026	DATE -	REVISED -

STATE OF ILLINOIS
DEPARTMENT OF TRANSPORTATION

D2 DETAILS
SN 098-0103

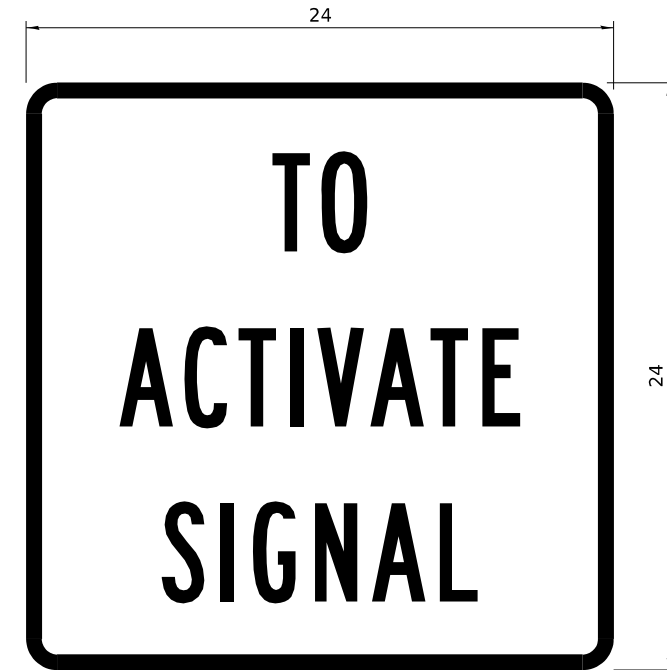
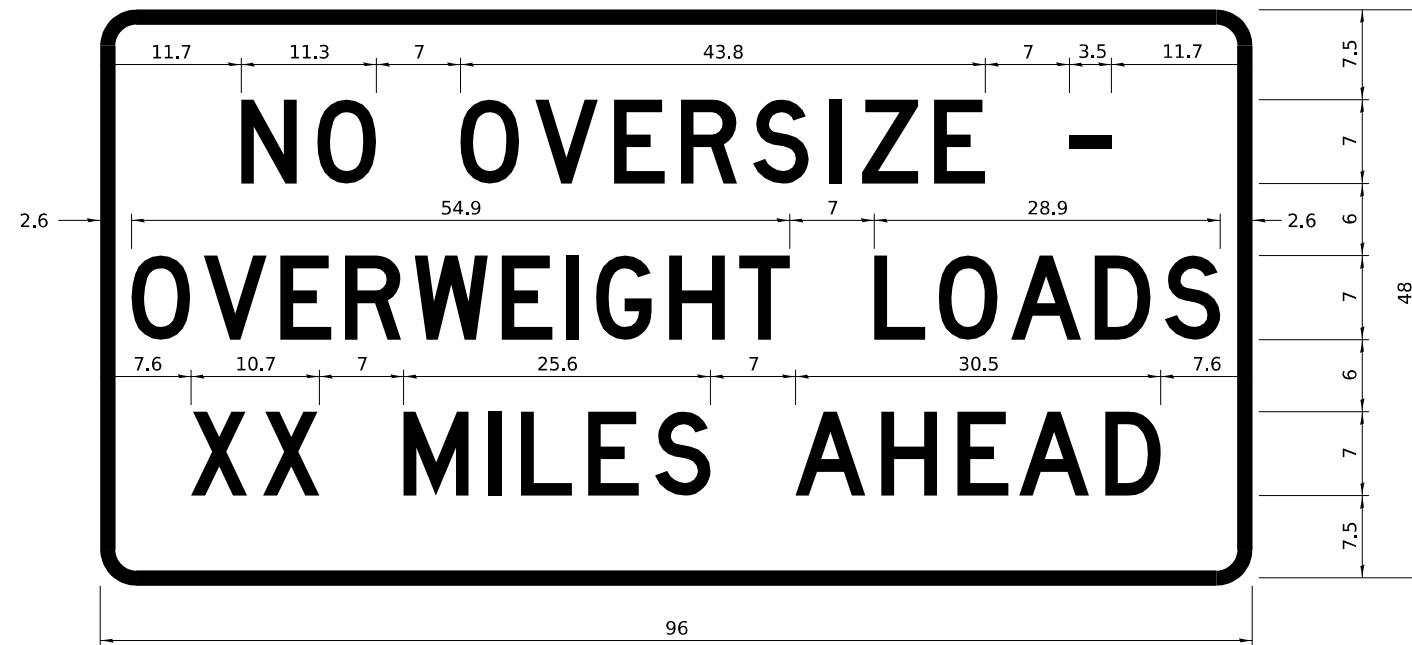
SCALE: SHEET 2 OF 4 SHEETS STA. TO STA.

F.A.P. RTE.	SECTION	COUNTY	TOTAL SHEETS	SHEET NO.
22	(115BR)BRR	WHITESIDE	26	18
CONTRACT NO. 64T46				
ILLINOIS FED. AID PROJECT				

WORK ZONE SIGN DETAILS

ROAD CLOSED TO OVERSIZED LOADS

STOP LINE SIGN FOR TEMPORARY SIGNALS



COLOR	LEGEND AND BORDER BACKGROUND	BLACK ORANGE	NON-REFLECTORIZED REFLECTORIZED
-------	------------------------------	--------------	---------------------------------

COLOR	LEGEND AND BORDER BACKGROUND	BLACK WHITE	NON-REFLECTORIZED REFLECTORIZED
-------	------------------------------	-------------	---------------------------------

Permit Loads - Loads Over 13 Feet; 3.0" Radius, 1.3" Border;
 [NO OVERSIZE -] D; [OVERWEIGHT LOADS] D 85% spacing; [XX MILES AHEAD] D;
 Table of letter and object lefts.

SIGN SIZE	SERIES BY LINE		
	1	2	3
24 x 24	4C	4C	4C

N	O	O	V	E	R	S	I	Z	E	-
11.7	18.1	30.0	36.2	42.8	48.4	54.4	60.7	63.5	69.5	80.8

O	V	E	R	W	E	I	G	H	T	L	O	A	D	S
2.6	8.6	15.0	20.4	26.2	33.4	38.8	41.3	47.4	53.2	64.5	69.9	75.9	82.9	88.7

X	X	M	I	L	E	S	A	H	E	A	D
7.6	13.6	25.3	32.3	35.1	40.6	46.2	57.9	65.1	71.4	76.6	83.7

Sign not to scale

Sign not to scale

GENERAL NOTES

All work to furnish and install these signs shall be included in the cost of the specified traffic control standards and shall not be paid separately.

All Illinois Standard signs shall conform to the latest edition of the "Illinois Standard Highway Signs Book" in effect on the date of invitation for bids.

Signs shall meet the applicable portions of Sections 701 and 720 of the Standard Specifications.

All dimensions are in inches unless otherwise noted.

MODEL: D2 34.1 - 3 (Sheet)
 FILE NAME: P:\26E4183-1\Structure #098-0103\Design\CADD Sheets\098-0103 - sht 017 - sht 026 - D2 Standards.dgn

USER NAME = gsturjeon	DESIGNED -	REVISED - 3-02-16
	DRAWN -	REVISED -
	CHECKED -	REVISED -
PLOT DATE = 1/29/2026	DATE -	REVISED -

STATE OF ILLINOIS
 DEPARTMENT OF TRANSPORTATION

D2 DETAILS
 SN 098-0103

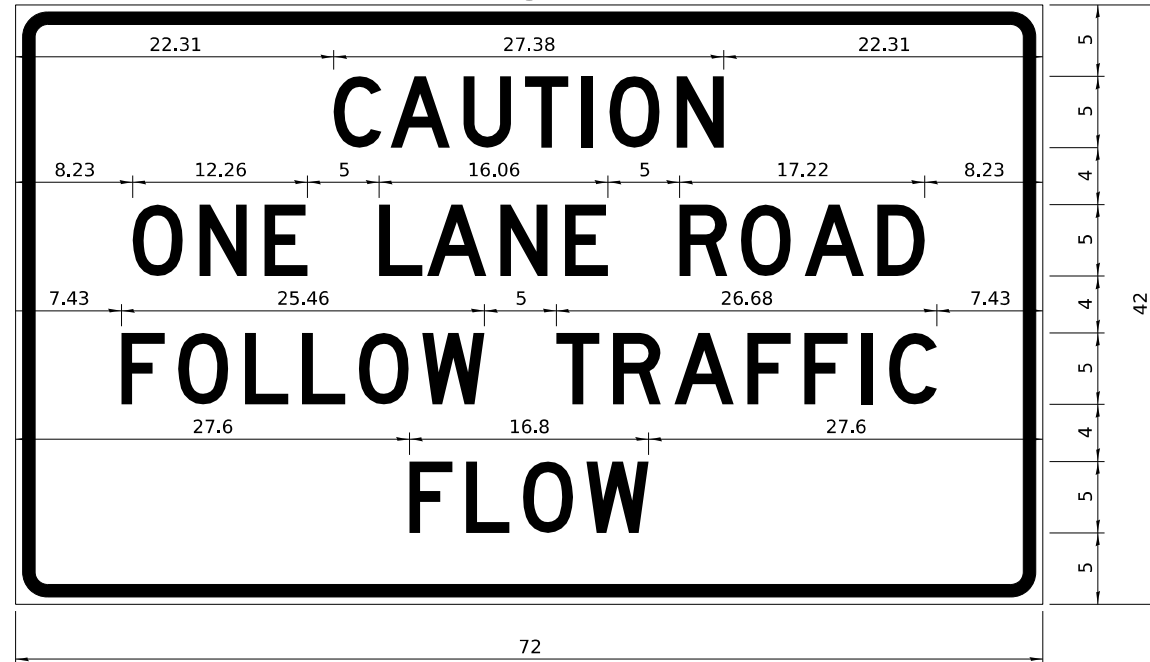
SCALE: SHEET 3 OF 4 SHEETS STA. TO STA.

F.A.P. RTE.	SECTION	COUNTY	TOTAL SHEETS	SHEET NO.
22	(115BR)BRR	WHITESIDE	26	19
CONTRACT NO. 64T46				
ILLINOIS FED. AID PROJECT				

**ENTRANCE SIGN FOR USE
WITH TEMPORARY SIGNALS**

WORK ZONE SIGN DETAILS

2



COLOR LEGEND AND BORDER BACKGROUND BLACK ORANGE NON-REFLECTORIZED REFLECTORIZED

2.25" Radius, 0.88" Border, 0.50" Indent;
[CAUTION] D; [ONE LANE ROAD] D;
[FOLLOW TRAFFIC] D; [FLOW] D

2 This sign shall be installed at entrances located between the temporary signals as shown in the staging plans.

Table Of Widths And Spaces

22.31	C	3.36	0.62	A	4.18	0.94	U	3.36	0.94	T	3.04	0.94	I	0.78	1.17	O	3.52	1.17	N	3.36	22.31
-------	---	------	------	---	------	------	---	------	------	---	------	------	---	------	------	---	------	------	---	------	-------

8.23	O	3.51	1.17	N	3.36	1.18	E	3.04
------	---	------	------	---	------	------	---	------

5.00	L	3.05	0.31	A	4.18	0.94	N	3.36	1.17	E	3.05
------	---	------	------	---	------	------	---	------	------	---	------

5.00	R	3.36	0.93	O	3.52	0.94	A	4.18	0.93	D	3.36	8.23
------	---	------	------	---	------	------	---	------	------	---	------	------

7.43	F	3.04	0.94	O	3.52	1.17	L	3.04	0.94	L	3.05	0.94	O	3.51	0.94	W	4.37
------	---	------	------	---	------	------	---	------	------	---	------	------	---	------	------	---	------

5.00	T	3.05	0.94	R	3.36	0.94	A	4.18	0.93	F	3.05	0.94	F	3.04	0.94	I	0.78	1.18	C	3.35	7.43
------	---	------	------	---	------	------	---	------	------	---	------	------	---	------	------	---	------	------	---	------	------

27.60	F	3.05	0.94	L	3.04	0.94	O	3.52	0.93	W	4.38	27.60
-------	---	------	------	---	------	------	---	------	------	---	------	-------

Sign not to scale

GENERAL NOTES

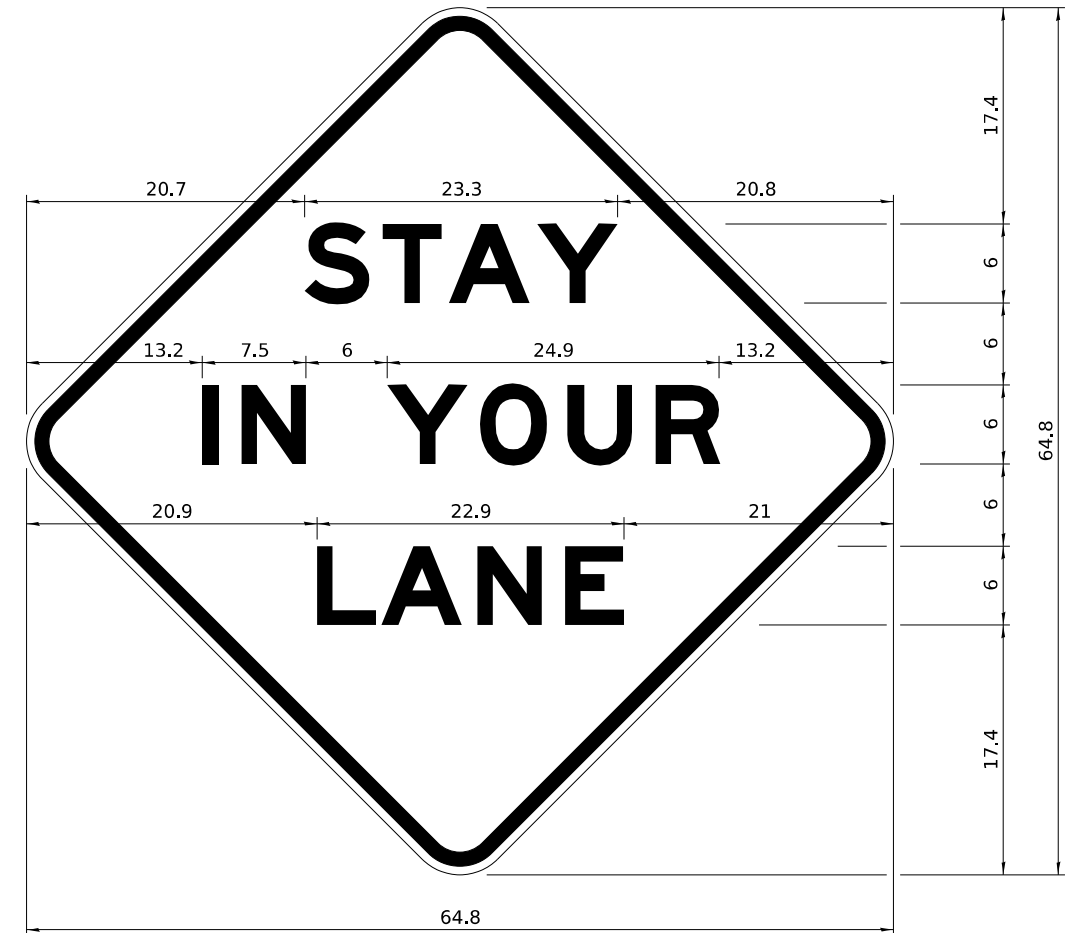
All work to furnish and install these signs shall be included in the cost of the specified traffic control standards and shall not be paid separately.

All Illinois Standard signs shall conform to the latest edition of the "Illinois Standard Highway Signs Book" in effect on the date of invitation for bids.

Signs shall meet the applicable portions of Sections 701 and 720 of the Standard Specifications.

All dimensions are in inches unless otherwise noted.

STAY IN YOUR LANE



COLOR LEGEND AND BORDER BACKGROUND BLACK ORANGE NON-REFLECTORIZED REFLECTORIZED

48.0" across sides 3.8" Radius, 1.0" Border, 0.6" Indent;
"STAY" E Mod; "IN YOUR" E Mod; "LANE" E Mod;

Table of Letter and Object Lefts

S	T	A	Y
20.7	26.8	31.6	38.0

I	N	Y	O	U	R
13.2	15.9	26.7	33.9	40.5	46.8

L	A	N	E
20.9	25.8	33.1	39.4

Sign not to scale

MODEL: D2 34.1 - 4 (Sheet)
FILE NAME: P:\25E4183-1\Structure #098-0103\Design\CADD Sheets\098-0103 - sht 017 - sht 026 - D2 Standards.dgn

USER NAME = gsturjeon	DESIGNED -	REVISED - 3-02-16
	DRAWN -	REVISED -
	CHECKED -	REVISED -
PLOT DATE = 1/29/2026	DATE -	REVISED -

**STATE OF ILLINOIS
DEPARTMENT OF TRANSPORTATION**

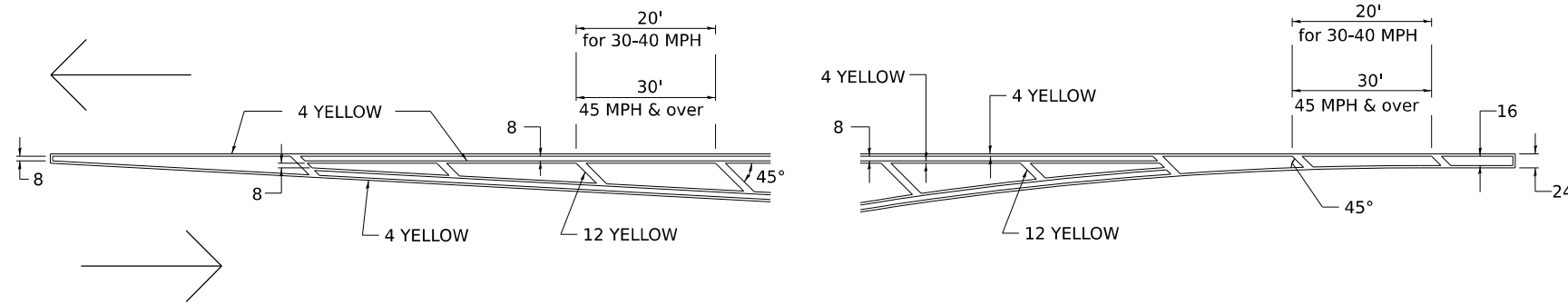
**D2 DETAILS
SN 098-0103**

SCALE: SHEET 4 OF 4 SHEETS STA. TO STA.

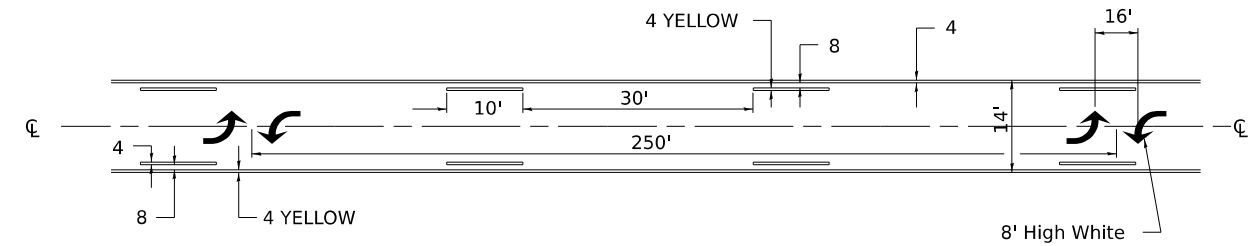
F.A.P. RTE.	SECTION	COUNTY	TOTAL SHEETS	SHEET NO.
22	(115BR)BRR	WHITESIDE	26	20
CONTRACT NO. 64T46				
ILLINOIS FED. AID PROJECT				

TYPICAL PAVEMENT MARKINGS

TYPICAL PAVEMENT MARKING FOR FLUSH MEDIAN AT LEFT TURN LANE

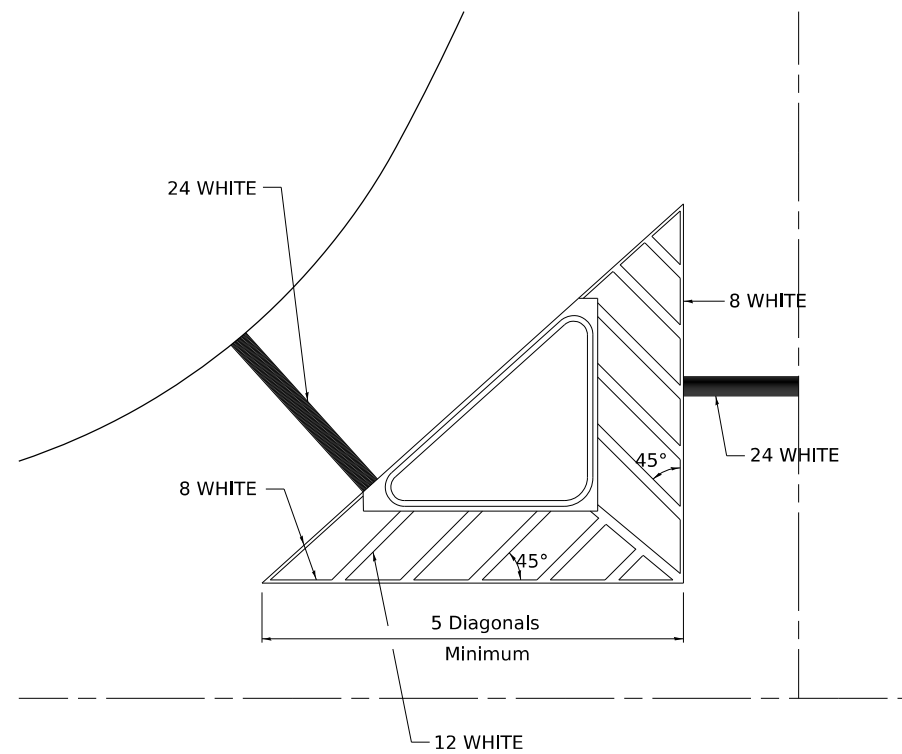


MEDIAN PAVEMENT MARKING



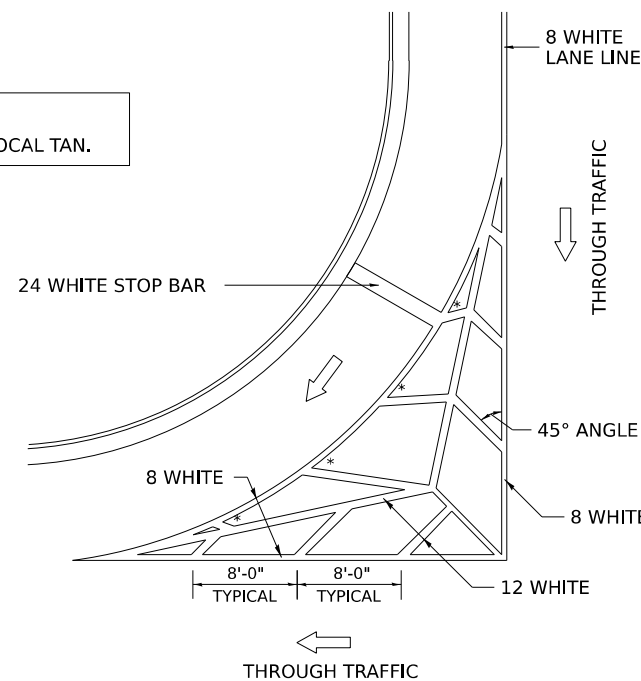
** ALL DIMENSIONS ARE IN INCHES UNLESS OTHERWISE NOTED.

TYPICAL ISLAND OFFSET SHOULDER WIDTH



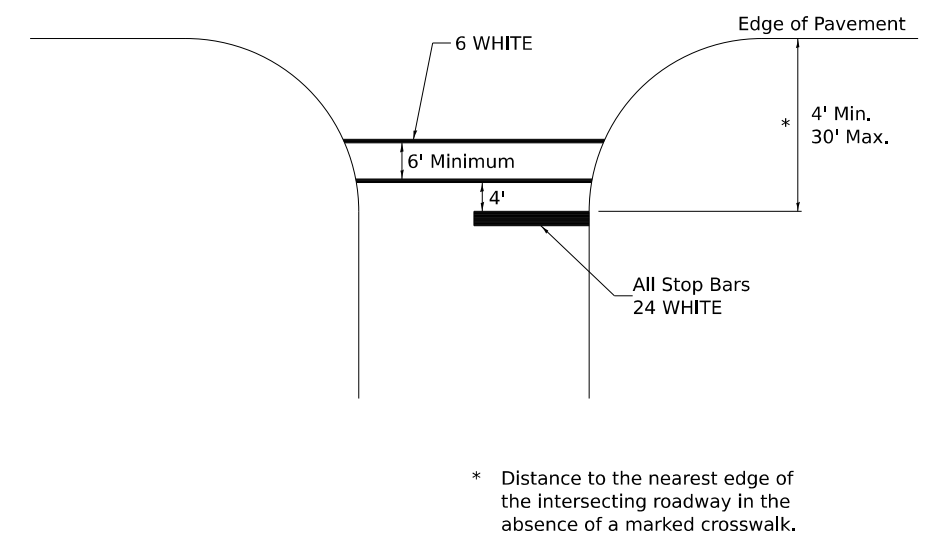
TYPICAL MARKING FOR PAINTED ISLANDS

NOTE:
* 45° TO LOCAL TAN.



STANDARD CROSSWALK MARKING

See Schedules for Locations



* Distance to the nearest edge of the intersecting roadway in the absence of a marked crosswalk.

MODEL: D2 41.1 (Sheet)
FILE NAME: P:\2025\4183-1\Structure #098-0103\Design\Design\CADD Sheets\098-0103 - sht 017 - sht 026 - D2 Standards.dgn

USER NAME = gsturjeon	DESIGNED -	REVISED - 6-27-14
	DRAWN -	REVISED - 3-05-12
	CHECKED -	REVISED -
PLOT DATE = 1/29/2026	DATE -	REVISED -

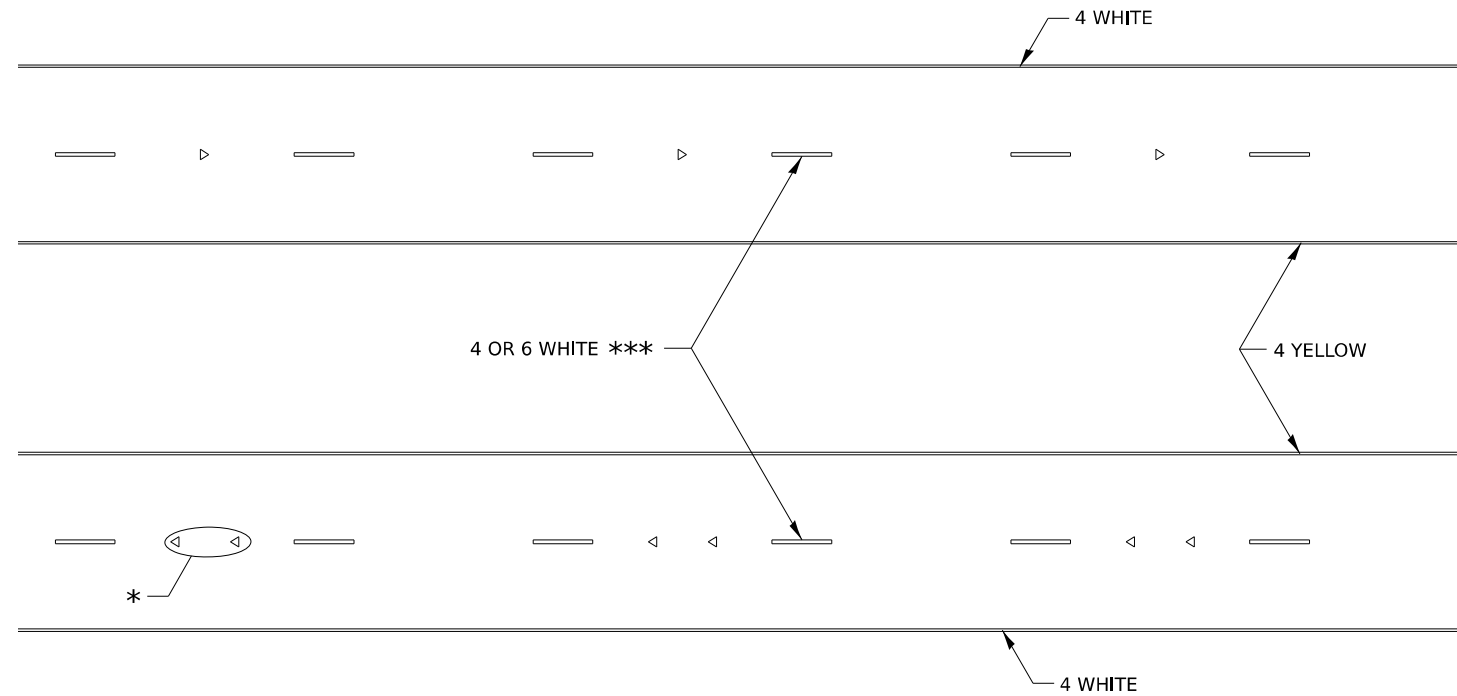
STATE OF ILLINOIS
DEPARTMENT OF TRANSPORTATION

D2 DETAILS
SN 098-0103

SCALE: SHEET 1 OF 5 SHEETS STA. TO STA.

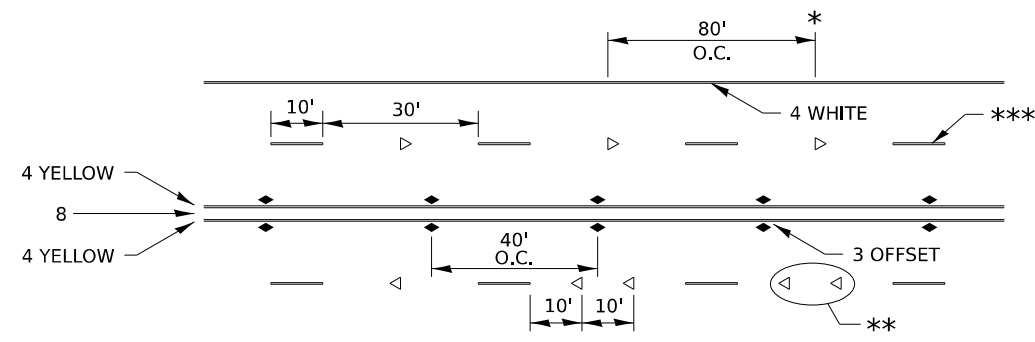
F.A.P. RTE.	SECTION	COUNTY	TOTAL SHEETS	SHEET NO.
22	(115BR)BRR	WHITESIDE	26	21
CONTRACT NO. 64T46				
ILLINOIS FED. AID PROJECT				

TYPICAL PAVEMENT MARKINGS



* SEE HIGHWAY STANDARD 781001 FOR SPACING DETAILS.
USE DOUBLE MARKERS WHEN ADT ≥ 20,000.

MULTI-LANE / DIVIDED



* REDUCE TO 40' O.C. ON CURVES WHERE ADVISORY SPEEDS ARE
10 MPH LOWER THAN POSTED SPEEDS.

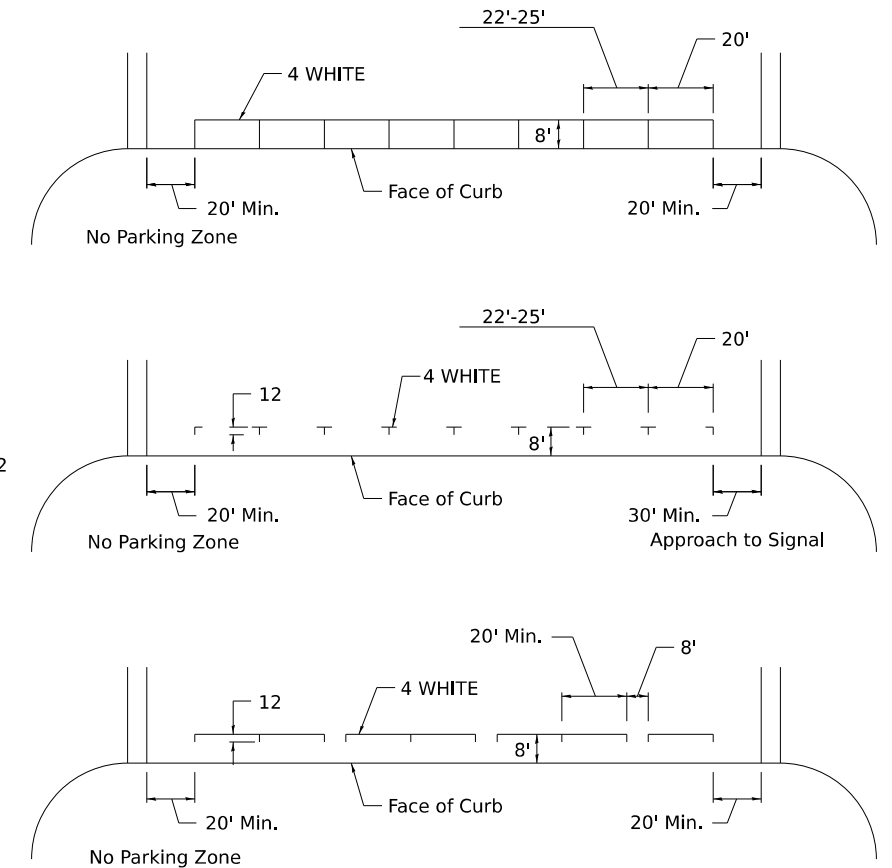
** USE DOUBLE MARKERS WHEN ADT ≥ 20,000

*** CENTERLINE SKIP DASH PAVEMENT MARKING SPEED LIMIT
LESS THAN 40 MPH USE 4" LINE, SPEED LIMIT 40 MPH AND
OVER USE 6" LINE.

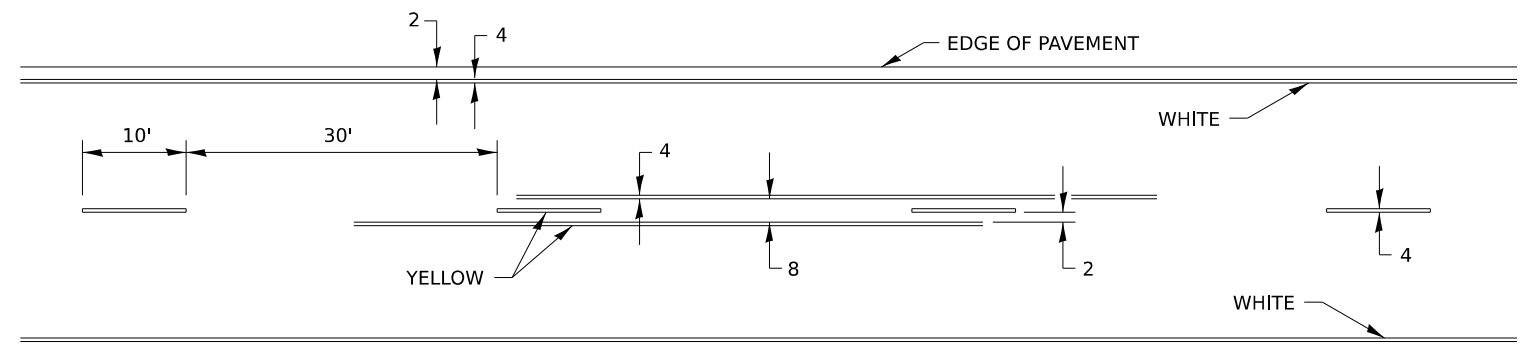
MULTI-LANE / UNDIVIDED & ONE WAY

(FOR MULTI-LANE UNDIVIDED HIGHWAYS USE THIS
DETAIL NOT HIGHWAY STANDARD 781001)

TYPICAL PARKING SPACING



TYPICAL PAVEMENT MARKING FOR TWO LANE SECTION – NO PASSING ZONES



MODEL: D2 41.1 - 3 (Sheet)
FILE NAME: P:\26E4183-1\Structure #098-0103\Design\Design\CADD Sheets\098-0103 - sht 017 - sht 026 - D2 Standards.dgn

USER NAME = gsturjeon	DESIGNED -	REVISED - 6-27-14
	DRAWN -	REVISED - 8-27-13
	CHECKED -	REVISED - 11-28-12
PLOT DATE = 1/29/2026	DATE -	REVISED -

STATE OF ILLINOIS
DEPARTMENT OF TRANSPORTATION

D2 DETAILS
SN 098-0103

SCALE: SHEET 3 OF 5 SHEETS STA. TO STA.

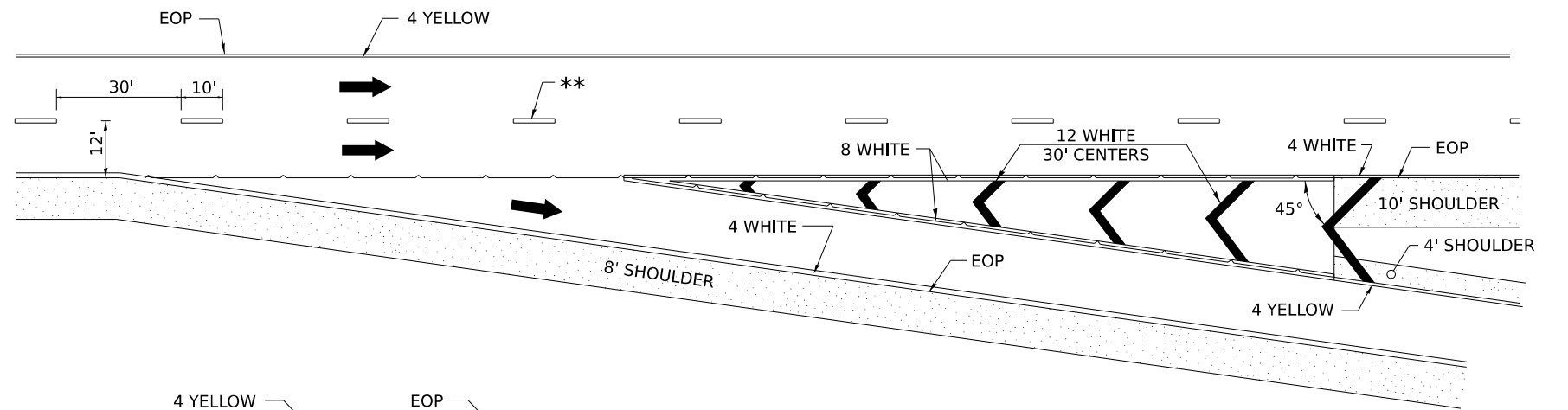
F.A.P. RTE.	SECTION	COUNTY	TOTAL SHEETS	SHEET NO.
22	(115BR)BRR	WHITESIDE	26	23
CONTRACT NO. 64T46				
ILLINOIS FED. AID PROJECT				

TYPICAL PAVEMENT MARKINGS

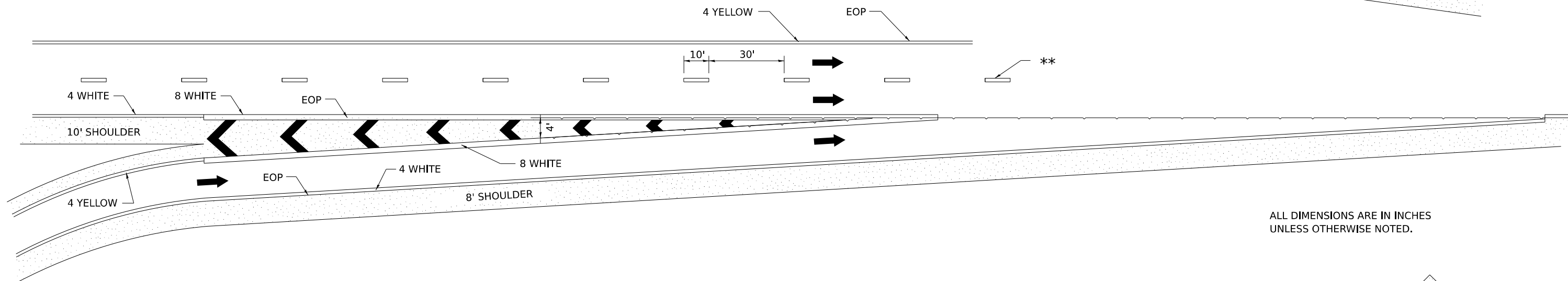
** 6" WHITE ON INTERSTATES, WHERE THE SPPED LIMIT IS 65 MPH, OR WHEN DIRECTED BY THE ENGINEER.
4" WIDE AT ALL OTHER LOCATIONS.

NOTE: GORE HATCHING PLACED ONLY WHEN SCHEDULED IN THE PLANS

EXIT RAMP

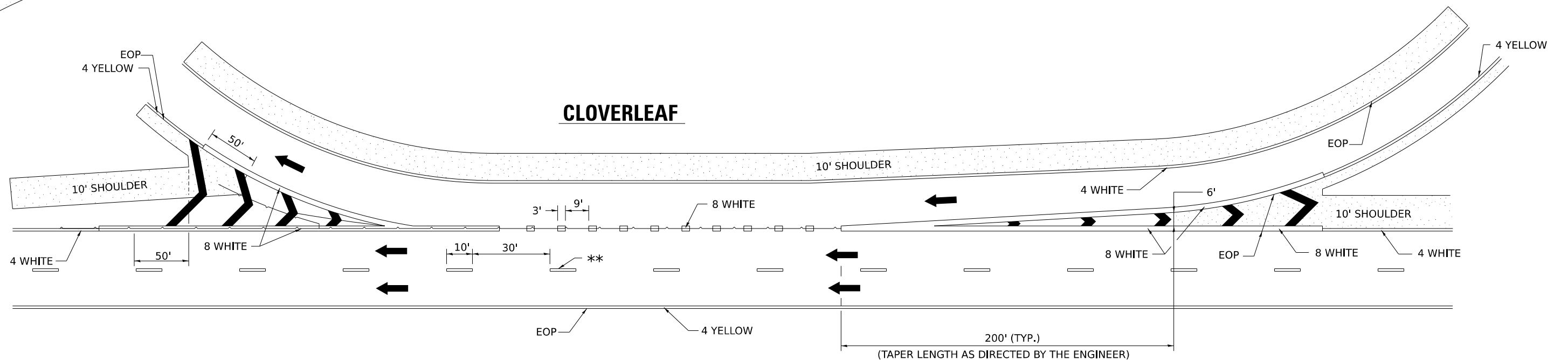


ENTRANCE RAMP



ALL DIMENSIONS ARE IN INCHES UNLESS OTHERWISE NOTED.

CLOVERLEAF



MODEL: D2 41.1 - 4 (Sheet)
FILE NAME: P:\25E4183-1\Structure #098-0103\Design\CADD Sheets\098-0103 - sht 017 - sht 026 - D2 Standards.dgn

USER NAME = gsturjeon	DESIGNED -	REVISED - 9-15-23
	DRAWN -	REVISED - 8-27-13
	CHECKED -	REVISED - 10-18-11
PLOT DATE = 1/29/2026	DATE -	REVISED -

STATE OF ILLINOIS
DEPARTMENT OF TRANSPORTATION

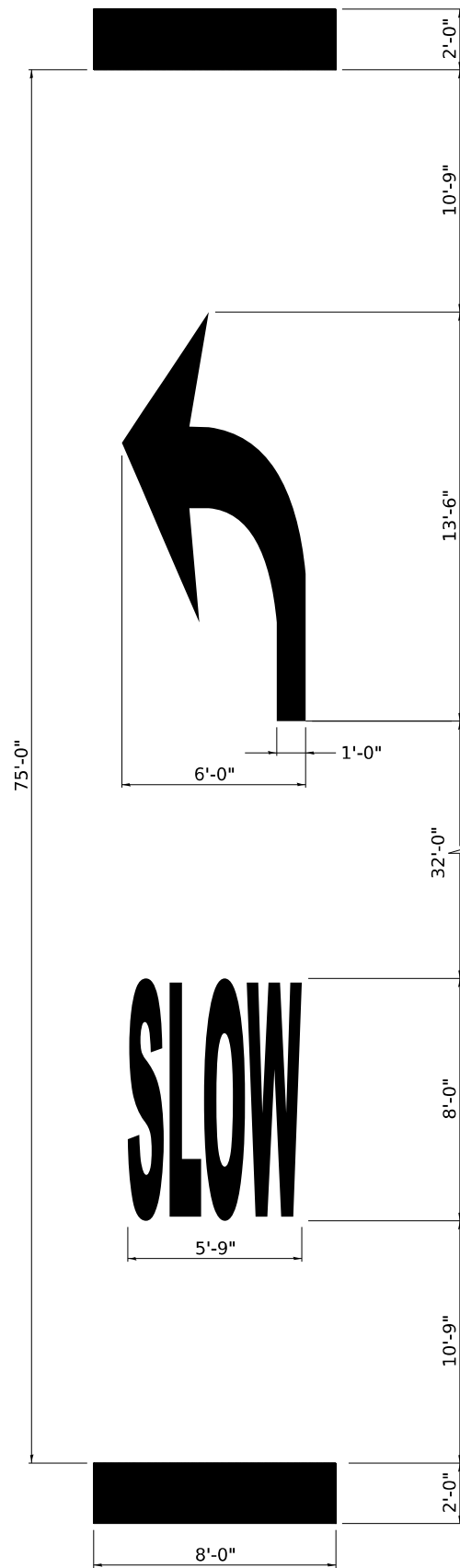
D2 DETAILS
SN 098-0103

SCALE: SHEET 4 OF 5 SHEETS STA. TO STA.

F.A.P. RTE.	SECTION	COUNTY	TOTAL SHEETS	SHEET NO.
22	(115BR)BRR	WHITESIDE	26	24
CONTRACT NO. 64T46				
ILLINOIS FED. AID PROJECT				

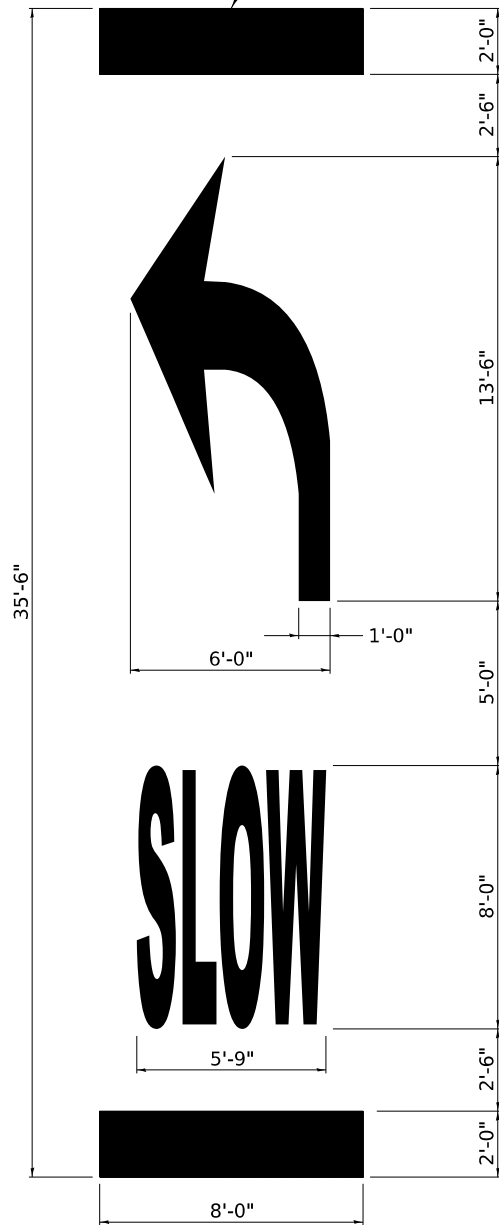
TYPICAL PAVEMENT MARKINGS

EDGE OF 24" PAVEMENT MARKING SHOULD CORRESPOND TO REFERENCE POINT SET IN FIELD.



**SLOW CURVE ARROW
HIGH-SPEED STANDARD MARKING**

(POSTED SPEED LIMIT 40 MPH OR GREATER)



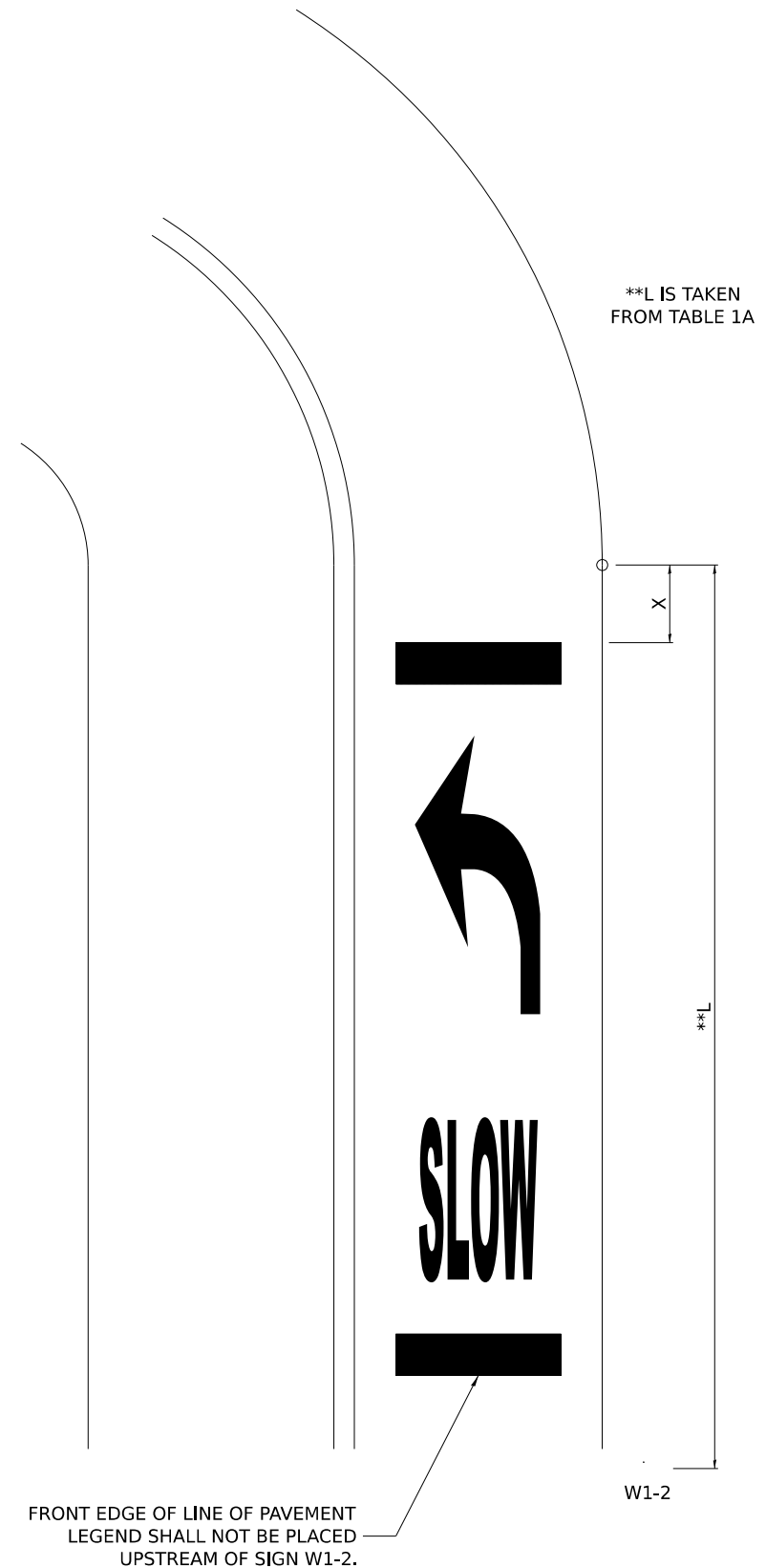
**SLOW CURVE ARROW
LOW-SPEED STANDARD MARKING**

(POSTED SPEED LIMIT 35 MPH OR LESS)

TABLE 1A

POSTED SPEED	WARNING SPEED							
	20	25	30	35	40	45	50	55
VALUE OF X (FT.)								
20 *	100							
25 *	100	100						
30 *	100	100	100					
35 *	100	100	100	100				
40 *	100	100	100	100	100			
45 *	125	110	100	100	100	100		
50 *	225	200	175	135	100	100	100	
55 *	300	275	250	200	175	135	100	100

* NOTE: ON ROADWAYS WITH A POSTED SPEED LIMIT OF 35 MPH OR LESS, USE THE 35'-6" PAVEMENT MARKING LEGEND AS SHOWN IN THE SLOW CURVE ARROW, LOW-SPEED STANDARD MARKING. ON ALL OTHER ROADWAYS, USE THE 50'-0" PAVEMENT MARKING LEGEND AS SHOWN ON THE SLOW CURVE ARROW, HIGH-SPEED STANDARD MARKING.



**TYPICAL LAYOUT AND PLACEMENT OF
SUPPLEMENTAL CURVE PLACEMENT MARKING**

MODEL: D2 41.1 - 5 (Sheet)
FILE NAME: P:\26E4183-1\Structure #098-0103\Design\CADD Sheets\098-0103 - sht 017 - sht 026 - D2 Standards.dgn

USER NAME = gsturjeon	DESIGNED -	REVISED - 10-8-25
	DRAWN -	REVISED - 4-17-25
	CHECKED -	REVISED -
PLOT DATE = 1/29/2026	DATE -	REVISED -

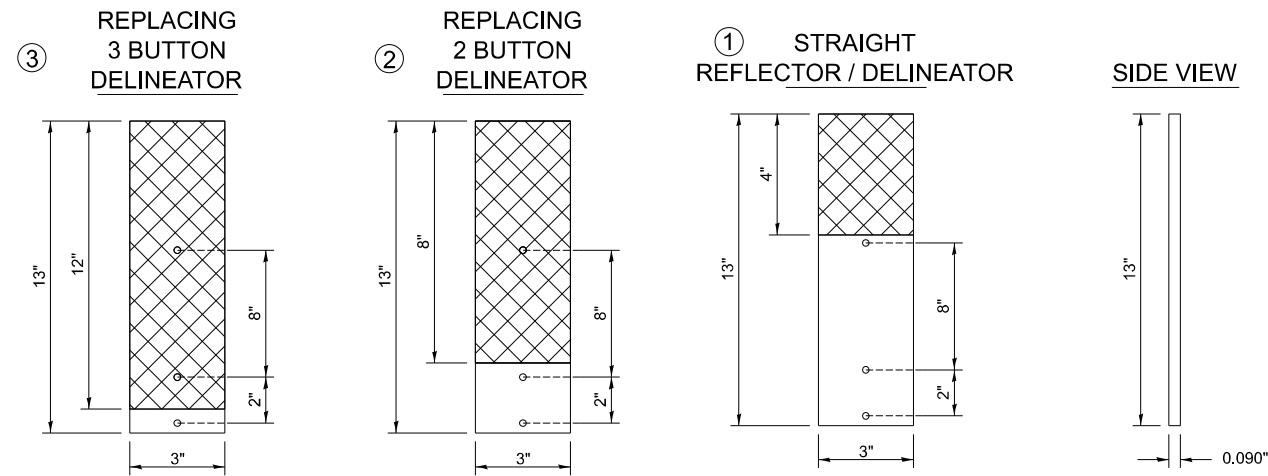
**STATE OF ILLINOIS
DEPARTMENT OF TRANSPORTATION**

D2 DETAILS SN 098-0103	
SCALE:	SHEET 5 OF 5 SHEETS STA. TO STA.

F.A.P. RTE.	SECTION	COUNTY	TOTAL SHEETS	SHEET NO.
22	(115BR)BRR	WHITESIDE	26	25
CONTRACT NO. 64T46				
ILLINOIS FED. AID PROJECT				

REFLECTORS (SPECIAL)

DELINEATOR REPLACEMENT



NOTE:

REFLECTOR REPLACEMENT SHALL BE PAID FOR AT THE CONTRACT UNIT PRICE PER EACH FOR GUARDRAIL REFLECTORS, TYPE C (SPECIAL), WHICH INCLUDES ALL MOUNTING HARDWARE OUTLINED IN SECTION 635 OF THE SPEC BOOK.

DELINEATOR INSTALLATION (REFLECTOR AND POST) SHALL BE PAID FOR AT THE CONTRACT UNIT PRICE PER EACH FOR DELINEATORS (SPECIAL), WHICH INCLUDES ALL MOUNTING HARDWARE OUTLINED IN SECTION 635 OF THE SPEC BOOK.

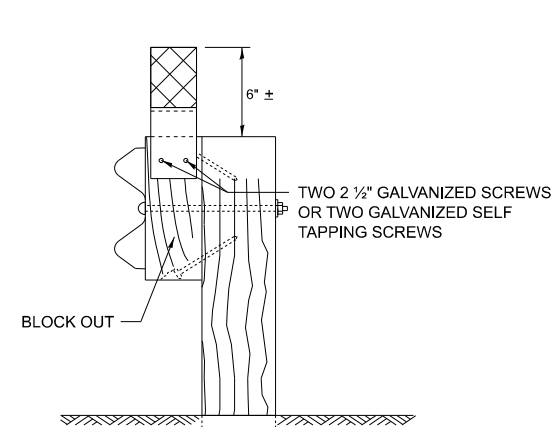
REFLECTORS INSTALLED ON TWO LANE ROADS SHALL BE DOUBLE SIDED AND BOTH SIDES SHALL BE CRYSTAL.

REFLECTORS INSTALLED ON CENTER BARRIER OR IN THE MEDIAN SHALL BE DOUBLE SIDED AND BOTH SIDES SHALL BE YELLOW.

REFLECTORS INSTALLED ON DIVIDED HIGHWAYS ON THE OUTSIDE OF THE ROADWAY SHALL BE DOUBLE SIDED CRYSTAL.

SPACING FOR REFLECTORS SHALL BE ACCORDING TO STANDARD 782006 UNLESS OTHERWISE NOTED IN THE PLANS.

REFLECTORS FOR GUARDRAIL BLOCK OUT OR DELINEATOR POST

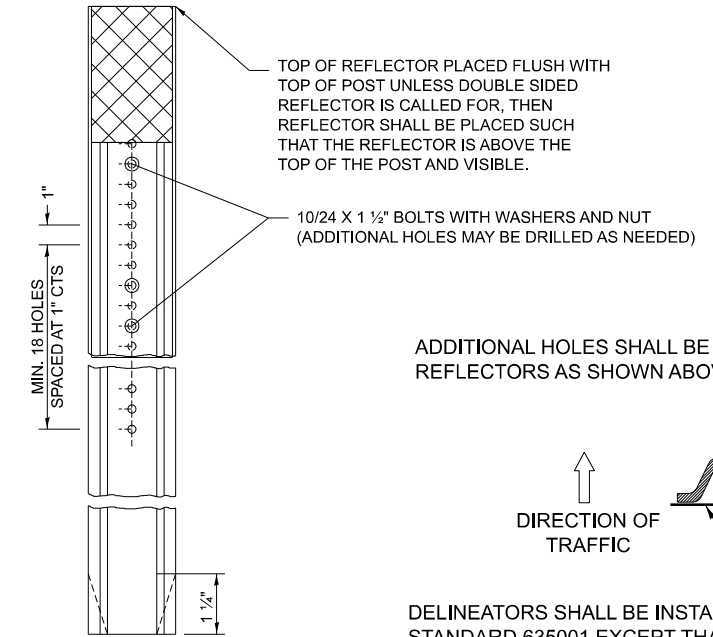


MOUNTED ON A GUARDRAIL BLOCK OUT

REFLECTORS SHALL BE MOUNTED DIRECTLY TO BLOCK OUTS.

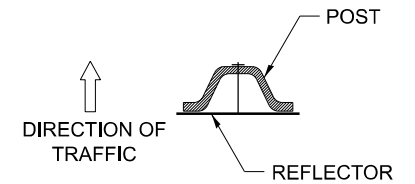
REFLECTORS MOUNTED ON WOODEN OR PLASTIC OR METAL BLOCK OUT SHALL BE MOUNTED USING TWO 2 1/2" GALVANIZED SCREWS WITH WASHERS OR TWO SELF TAPPING GALVANIZED SCREWS WITH WASHERS.

ADDITIONAL SHEETING MAY BE ADDED AS NEEDED FOR TURN AROUNDS AS SHOWN IN THE PLANS



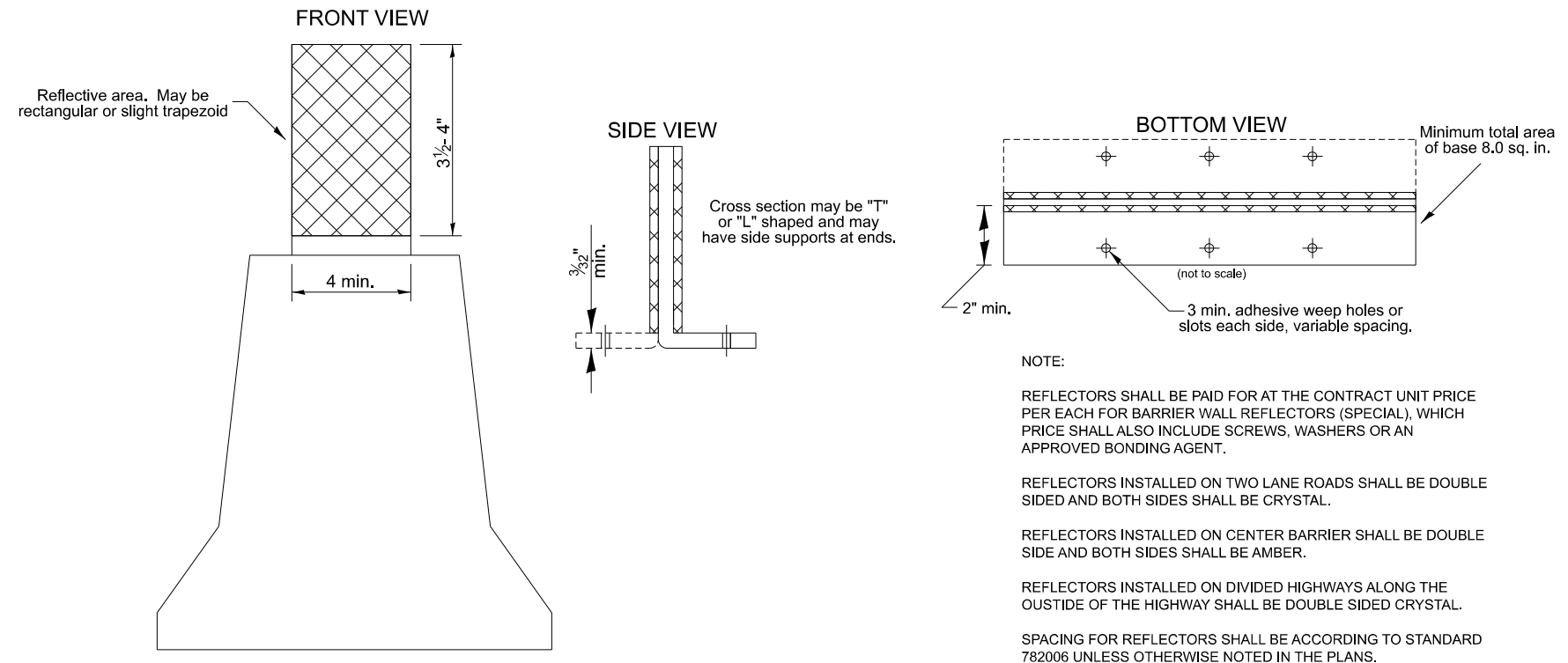
MOUNTED ON A DELINEATOR POST

ADDITIONAL HOLES SHALL BE DRILLED IN THE REFLECTORS AS SHOWN ABOVE.



DELINEATORS SHALL BE INSTALLED ACCORDING TO STANDARD 635001 EXCEPT THAT THE POST SHALL BE ROTATED 180°. THE POST WILL HAVE THE WIDE SIDE FACING TRAFFIC AND THE REFLECTOR ATTACHED AS SHOWN ABOVE.

REFLECTORS MOUNTED ON BARRIER WALL



NOTE:

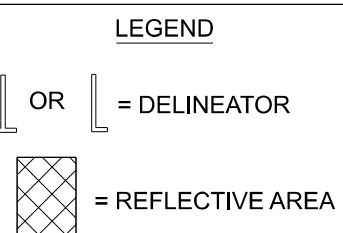
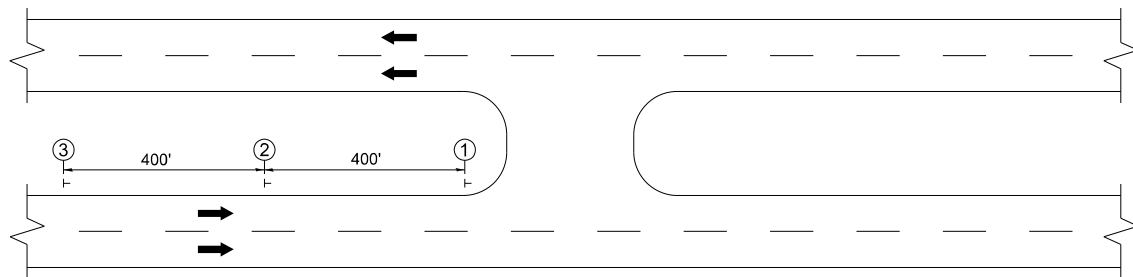
REFLECTORS SHALL BE PAID FOR AT THE CONTRACT UNIT PRICE PER EACH FOR BARRIER WALL REFLECTORS (SPECIAL), WHICH PRICE SHALL ALSO INCLUDE SCREWS, WASHERS OR AN APPROVED BONDING AGENT.

REFLECTORS INSTALLED ON TWO LANE ROADS SHALL BE DOUBLE SIDED AND BOTH SIDES SHALL BE CRYSTAL.

REFLECTORS INSTALLED ON CENTER BARRIER SHALL BE DOUBLE SIDE AND BOTH SIDES SHALL BE AMBER.

REFLECTORS INSTALLED ON DIVIDED HIGHWAYS ALONG THE OUTSIDE OF THE HIGHWAY SHALL BE DOUBLE SIDED CRYSTAL.

SPACING FOR REFLECTORS SHALL BE ACCORDING TO STANDARD 782006 UNLESS OTHERWISE NOTED IN THE PLANS.



MODEL: D2 55.1-1 [Sheet] FILE NAME: P:\25E4183-1\Structure #098-0103\Design\Design\ADD Sheets\098-0103 - sht 017 - sht 026 - D2 Standards.dgn

USER NAME = gsturjeon	DESIGNED -	REVISED - 3-07-25
	DRAWN -	REVISED - 3-07-24
	CHECKED -	REVISED - 4-27-23
PLOT DATE = 1/29/2026	DATE -	REVISED - 6-21-21

**STATE OF ILLINOIS
DEPARTMENT OF TRANSPORTATION**

**DISTRICT 2 DETAILS
SN 098-0103**

SCALE: SHEET 1 OF 1 SHEETS STA. TO STA.

F.A.P. RTE.	SECTION	COUNTY	TOTAL SHEETS	SHEET NO.
22	(115BR)BRR	WHITESIDE	26	26
CONTRACT NO. 64T46				
ILLINOIS FED. AID PROJECT				