

GENERAL NOTES

THE FOLLOWING RATES OF APPLICATION HAVE BEEN USED IN CALCULATING PLAN QUANTITIES:

GRANULAR MATERIALS	2.05	TONS / CU YD
--------------------	------	--------------

COMMITMENTS

ALL EXCAVATED MATERIALS MUST REMAIN ON SITE

**STATE OF ILLINOIS
DEPARTMENT OF TRANSPORTATION
DISTRICT THREE
AS BUILT INFORMATION**

SUPERVISING CONSTRUCTION FIELD ENGINEER

RESIDENT ENGINEER / TECHNICIAN

**START & END DATES
OF CONSTRUCTION:**

INSPECTORS:

MODEL: Default
FILE NAME: c:\p\work\pww\illinois.gov_oladete.o.popoola@illinois.gov\d1140536.D366T09.dgn

USER NAME = Oladete,O.Popoola	DESIGNED - RW	REVISED -
	DRAWN - RW	REVISED -
	CHECKED - JS	REVISED -
PLOT DATE = 4/3/2026	DATE - 7/25/2025	REVISED -

**STATE OF ILLINOIS
DEPARTMENT OF TRANSPORTATION**

GENERAL NOTES

SCALE: SHEET 1 OF 1 SHEETS STA. TO STA.

F.A.P. RTE.	SECTION	COUNTY	TOTAL SHEETS	SHEET NO.
317	(WS)PP-2	IROQUOIS	14	2
CONTRACT NO. 66T09				
ILLINOIS FED. AID PROJECT				

MODEL: Default
 FILE NAME: c:\p\work\pww\illinois.gov_oladele.o.popoola@illinois.gov\140536D366T09.dgn

CODE NO.	ITEM	UNIT	TOTAL QUANTITY	CONSTRUCTION CODE	
				WEIGH STATION 100% STATE	RURAL
				ROADWAY	0006
44200050	WELDED WIRE REINFORCEMENT	SQ YD	1722	1722	
44200970	CLASS B PATCHES, TYPE II, 10 INCH	SQ YD	752	752	
44200974	CLASS B PATCHES, TYPE III, 10 INCH	SQ YD	741	741	
44200976	CLASS B PATCHES, TYPE IV, 10 INCH	SQ YD	229	229	
44201299	DOWEL BARS 1 1/2"	EACH	1554	1554	
44213200	SAW CUTS	FOOT	5452	5452	
44213204	TIE BARS 3/4"	EACH	90	90	
48102100	AGGREGATE WEDGE SHOULDER, TYPE B	TON	312	312	
67100100	MOBILIZATION	L SUM	1	1	
* 78005100	PREFORMED PLASTIC TYPE D MATERIAL - LETTERS AND SYMBOLS	SQ FT	316	316	
* 78005110	EPOXY PAVEMENT MARKING - LINE 4"	FOOT	2133	2133	
* 78005140	EPOXY PAVEMENT MARKING - LINE 8"	FOOT	1322	1322	
* 78005150	EPOXY PAVEMENT MARKING - LINE 12"	FOOT	238	238	
* 78005180	EPOXY PAVEMENT MARKING - LINE 24"	FOOT	60	60	
X7010216	TRAFFIC CONTROL AND PROTECTON, (SPECIAL)	L SUM	1	1	

***SPECIALITY ITEMS**

USER NAME = Oladele.O.Popoola	DESIGNED - RW	REVISED -
	DRAWN - RW	REVISED -
	CHECKED - JS	REVISED -
PLOT DATE = 4/3/2026	DATE - 7/25/2025	REVISED -

**STATE OF ILLINOIS
 DEPARTMENT OF TRANSPORTATION**

SUMMARY OF QUANTITIES

SCALE: SHEET 1 OF 2 SHEETS STA. TO STA.

F.A.P. RTE.	SECTION	COUNTY	TOTAL SHEETS	SHEET NO.
317	(WS)PP-2	IROQUOIS	14	3
ILLINOIS FED. AID PROJECT			CONTRACT NO. 66T09	

CODE NO.	ITEM	UNIT	TOTAL QUANTITY	CONSTRUCTION CODE	
				WEIGH STATION 100% STATE	
				ROADWAY	
				0006	RURAL
* 78011000	GROOVING FOR RECESSED PAVEMENT MARKING, LETTERS AND SYMBOLS	SQ FT	316	316	
* 78011025	GROOVING FOR RECESSED PAVEMENT MARKING 5"	FOOT	2133	2133	
* 78011045	GROOVING FOR RECESSED PAVEMENT MARKING 9"	FOOT	1322	1322	
* 78011065	GROOVING FOR RECESSED PAVEMENT MARKING 13"	FOOT	242	242	
* 78011125	GROOVING FOR RECESSED PAVEMENT MARKING 25"	FOOT	60	60	
78300202	PAVEMENT MARKING REMOVAL - WATER BLASTING	SQ FT	1637	1637	
Z0017099	DOWEL BAR ASSEMBLY	EACH	10	10	

*SPECIALITY ITEMS

MODEL: Default
FILE NAME: c:\p\work\pav\illinois.gov_oladele.o.popoola@illinois.gov\d140536D368T09.dgn

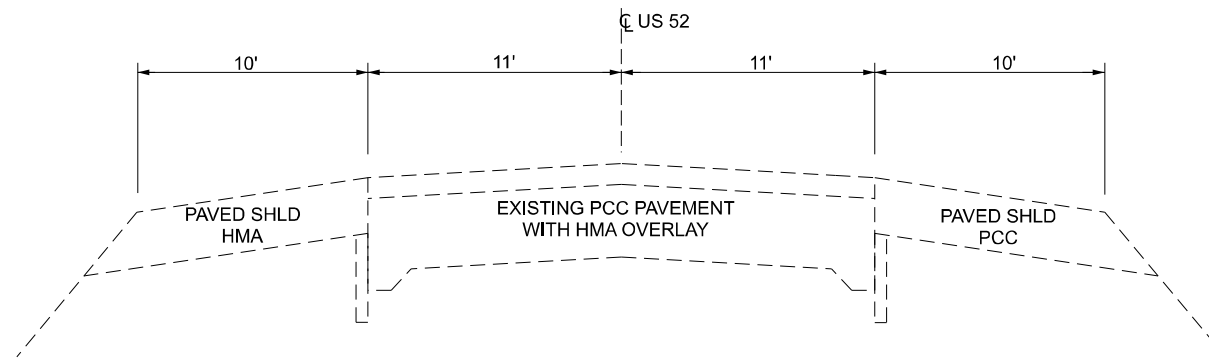
USER NAME = Oladele.O.Popoola	DESIGNED - RW	REVISED -
	DRAWN - RW	REVISED -
	CHECKED - JS	REVISED -
PLOT DATE = 4/3/2026	DATE - 7/25/2025	REVISED -

**STATE OF ILLINOIS
DEPARTMENT OF TRANSPORTATION**

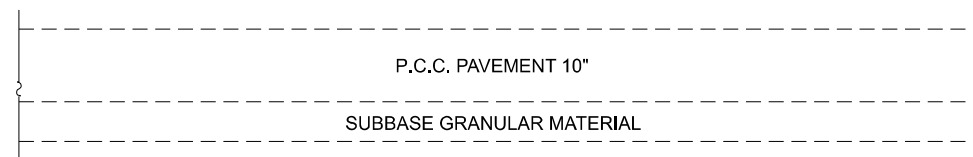
SUMMARY OF QUANTITIES

SCALE: SHEET 2 OF 2 SHEETS STA. TO STA.

F.A.P. RTE.	SECTION	COUNTY	TOTAL SHEETS	SHEET NO.
317	(WS)PP-2	IROQUOIS	14	4
			CONTRACT NO. 66T09	
			ILLINOIS FED. AID PROJECT	



TYPICAL SECTION 1
US 52



TYPICAL SECTION 2
SHELDON WEIGH STATION

MODEL: Default
FILE NAME: c:\p\work\pww\illinois.gov_oladete.o.popoola@illinois.gov\d1140536\ID366T09.dgn

USER NAME = Oladete,O.Popoola	DESIGNED - RW	REVISED -
	DRAWN - RW	REVISED -
	CHECKED - JS	REVISED -
PLOT DATE = 4/3/2026	DATE - 7/25/2025	REVISED -

STATE OF ILLINOIS
DEPARTMENT OF TRANSPORTATION

TYPICAL SECTIONS

SCALE: SHEET 1 OF 1 SHEETS STA. TO STA.

F.A.P. RTE.	SECTION	COUNTY	TOTAL SHEETS	SHEET NO.
317	(WS)PP-2	IROQUOIS	14	5
CONTRACT NO. 66T09				
ILLINOIS FED. AID PROJECT				

PATCHING SCHEDULE - WEST

LOCATION	PATCH LENGTH	LANE WIDTH	LANE 1 CLASS B			LANE 2 CLASS B			LANE 3 CLASS B			LANE 4 CLASS B			LANE 5 CLASS B			DOWEL BARS 1 1/2"	DOWEL BAR ASSEMBLY	SAW CUTS	WELDED WIRE REINF.	TIE BARS 3/4"	
			TYPE II 10"	TYPE III 10"	TYPE IV 10"	TYPE II 10"	TYPE III 10"	TYPE IV 10"	TYPE II 10"	TYPE III 10"	TYPE IV 10"	TYPE II 10"	TYPE III 10"	TYPE IV 10"	TYPE II 10"	TYPE III 10"	TYPE IV 10"						
			SQ YD	SQ YD	SQ YD	SQ YD	SQ YD	SQ YD	SQ YD	SQ YD	SQ YD	SQ YD	SQ YD	SQ YD	SQ YD	SQ YD	SQ YD						
0+09	12	12		16														20		72	16		
0+09	12	12					16												20		60	16	
0+09	12	12								16			16						20		60	48	
0+55	8	11	10																18		57	10	
0+55	8	11					10												18		49	10	
0+97	11	11																	18		66	13	
1+23	16	11		20															18		81	20	
1+51	12	11	15																18		69	15	
1+51	12	11					15												18		57	15	
1+72	12	11																	18		69	15	
1+72	12	11					15												18		57	15	
1+89	40	11																	18	3	113	49	26
1+89	25	11																	18	2	108	31	16
1+89	12	12		16						16			16						20		48	80	
2+02	12	11	15																18		69	15	
2+02	12	11					15												18		69	15	
2+13	12	11	15																18		69	15	
2+37	16	11		20															18		81	20	
2+37	16	11																	18		65	20	
2+63	12	11	15																18		69	15	
3+16	12	11	15																18		69	15	
3+16	12	11					15												18		57	15	
3+16	12	11								15									18		45	15	
3+37	16	11		20															18		81	20	
3+37	16	11																	18		65	20	
0+44	10	12											13						20		66	26	
0+44	10	12																	20		56	13	
0+68	8	12											11						20		60	11	
0+68	8	12																	20		52	11	
1+06	10	12											13						20		66	13	
1+06	10	12																	20		56	13	
1+17	12	12																	20		72	16	
1+17	12	12											16						20		60	16	
1+35	10	12											13						20		66	13	
1+35	10	12																	20		56	13	
1+57	12	13																	22		75	17	
1+89	8	12											11						20		60	11	
1+89	8	12																	20		52	11	
2+04	22	12																	20		102	29	14
TOTAL			113	92	49	70	72	31	15	32		61	48		74	65	29	740	6	2604	751	56	

MODEL: Default
FILE NAME: c:\p\work\pww\illinois.gov_oladete.o.popoola@illinois.gov\1140536.D366T09.dgn

USER NAME = Oladete,O.Popoola	DESIGNED - RW	REVISED -
	DRAWN - RW	REVISED -
	CHECKED - JS	REVISED -
PLOT DATE = 4/3/2026	DATE - 7/25/2025	REVISED -

**STATE OF ILLINOIS
DEPARTMENT OF TRANSPORTATION**

SCHEDULES

SCALE: SHEET 1 OF 2 SHEETS STA. TO STA.

F.A.P. RTE. 317	SECTION (WS)/PP-2	COUNTY IROQUOIS	TOTAL SHEETS 14	SHEET NO. 6
CONTRACT NO. 66T09				
ILLINOIS FED. AID PROJECT				

PATCHING SCHEDULE - EAST

LOCATION	PATCH LENGTH	LANE WIDTH	LANE 1 CLASS B			LANE 2 CLASS B			LANE 3 CLASS B			LANE 4 CLASS B			LANE 5 CLASS B			LANE 6 CLASS B			DOWEL BARS 1 1/2"	DOWEL BAR ASSEMBLY	SAW CUTS	WELDED WIRE REINF.	TIE BARS 3/4"
			TYPE II	TYPE III	TYPE IV	TYPE II	TYPE III	TYPE IV	TYPE II	TYPE III	TYPE IV	TYPE II	TYPE III	TYPE IV	TYPE II	TYPE III	TYPE IV	TYPE II	TYPE III	TYPE IV					
			10"	10"	10"	10"	10"	10"	10"	10"	10"	10"	10"	10"	10"	10"	10"	10"	10"	10"					
STATION	FEET	FEET	SQ YD	SQ YD	SQ YD	SQ YD	SQ YD	SQ YD	SQ YD	SQ YD	SQ YD	SQ YD	SQ YD	SQ YD	SQ YD	SQ YD	SQ YD	SQ YD	EA	EA	FOOT	SQ YD	EA		
0+21	12	11	15																18		69	15			
0+21	12	11				15													18		57	15			
0+21	12	11							15										18		45	15			
0+39	12	11	15																18		69	15			
0+39	12	11				15													18		57	15			
0+50	16	11		20															18		81	20			
0+50	16	11					20												18		65	20			
0+80	16	11		20															18		81	20			
0+80	16	11					20												18		65	20			
0+80	16	11						20											18		65	20			
1+02	18	11		22															18		87	22			
1+02	18	11					22												18		69	22			
1+02	18	11						22											18		69	22			
0+00	11	12										15							20		69	15			
0+00	12	12												16					20		60	16			
0+30	11	10										12							16		63	12			
0+30	19	10												21					16		68	21			
0+42	11	10										12							16		63	24			
0+42	17	10											19						16		81	38			
0+52	11	10										12							16		63	24			
0+52	27	10												30					16	2	84	60	17		
0+75	11	12										15							20		69	30			
0+75	13	12											17						20		75	34			
0+91	11	10										12							16		63	24			
0+91	27	10												30					16	2	84	60	17		
1+14	12	10										13							16		66	13			
1+14	12	10												13					16		66	13			
1+14	6	10															7		16		36	7			
1+38	12	12												16					20		72	16			
1+50	12	16											21						28		84	21			
1+78	11	16											20						28		81	20			
1+78	11	16												20					28		70	20			
1+78	11	16													20				28		59	20			
2+19	11	12										15							20		69	15			
2+19	11	12												15					20		58	15			
2+19	11	12														15			20		58	15			
2+30	11	16											20						28		81	20			
2+30	11	16													20				28		70	20			
2+30	11	16														20			28		59	40			
2+54	12	10										13							16		66	39			
2+60	12	10										13							16		66	39			
2+74	12	10										13							16		66	39			
TOTAL			30	62		30	62		15	42		145	97	60	118	129	60	81	40		814	4	2848	971	34

MODEL: Default
FILE NAME: c:\p\work\pav\illinois.gov_oladete.o\popoola\illinois.gov_oladete.o\popoola\66T09.dgn

USER NAME = Oladete,O.Popoola	DESIGNED - RW	REVISED -
	DRAWN - RW	REVISED -
	CHECKED - JS	REVISED -
PLOT DATE = 4/3/2026	DATE - 7/25/2025	REVISED -

**STATE OF ILLINOIS
DEPARTMENT OF TRANSPORTATION**

SCHEDULES

SCALE: SHEET 2 OF 2 SHEETS STA. TO STA.

F.A.P. RTE. 317	SECTION (WS)PP-2	COUNTY IROQUOIS	TOTAL SHEETS 14	SHEET NO. 7
CONTRACT NO. 66T09			ILLINOIS FED. AID PROJECT	

SCHEDULE - PAVEMENT MARKING

LOCATION	PAVEMENT REMOVAL WATER - BLASTING	EPOXY PAVEMENT MARKING LETTERS AND SYMBOLS	EPOXY PAVEMENT MARKING LINE 4"		EPOXY PAVEMENT MARKING LINE 8"		EPOXY PAVEMENT MARKING LINE 12"		PREFORMED PLASTIC PM TYPE D 24"
	SQ FT	SQ FT	FEET		FEET		FEET		FEET
		WHITE	YELLOW	WHITE	WHITE (LINE)	WHITE (SKIP-DASH)	YELLOW (DIAGONALS)	WHITE (DIAGONALS)	WHITE
WEST	727	146	456	595	520	24	120		30
EAST	910	170	624	458	754	24		118	30
SUBTOTAL			1080	1053	1274	48	120	118	
TOTAL	1637	316	2133		1322		238		60

SCHEDULE - PAVEMENT MARKING

LOCATION	GROOVING FOR RECESSED PAVEMENT MARKING LETTERS & SYMBOLS	GROOVING FOR RECESSED PAVEMENT MARKING 5"	GROOVING FOR RECESSED PAVEMENT MARKING 9"	GROOVING FOR RECESSED PAVEMENT MARKING 13"	GROOVING FOR RECESSED PAVEMENT MARKING 25"
	SQ FT	FOOT	FOOT	FOOT	FOOT
	WEST	146	1051	544	160
EAST	170	1082	778	82	30
SUBTOTAL					
TOTAL	316	2133	1322	242	60

**SCHEDULE
AGGREGATE WEDGE SHLD**

LOCATION	AGGREGATE WEDGE SHOULDER TYPE B
	TON
WEST	161
EAST	151
TOTAL	312

MODEL: Default
FILE NAME: c:\p\work\pav\illinois.gov_oladete.o.popoola@illinois.gov\1140536.D366T09.dgn

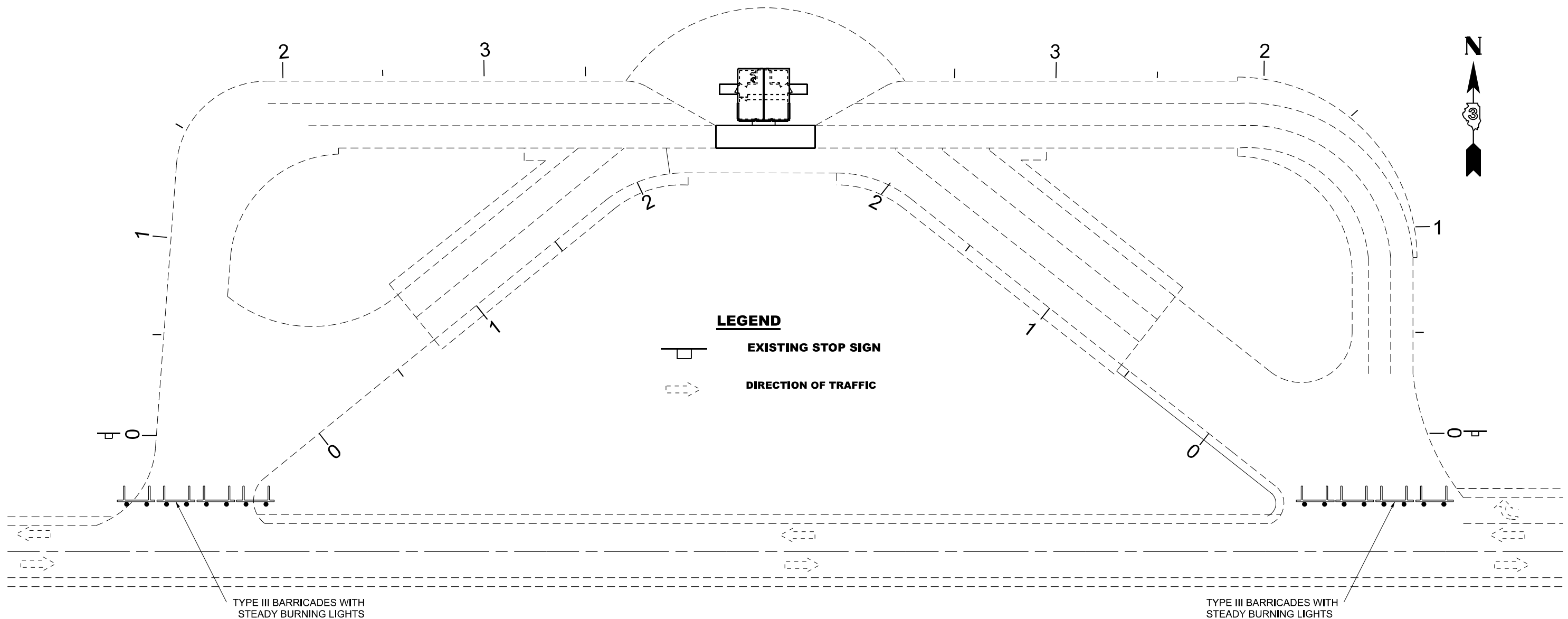
USER NAME = Oladete,O.Popoola	DESIGNED - RW	REVISED -
	DRAWN - RW	REVISED -
	CHECKED - JS	REVISED -
PLOT DATE = 4/3/2026	DATE - 7/25/2025	REVISED -

**STATE OF ILLINOIS
DEPARTMENT OF TRANSPORTATION**

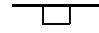
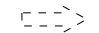
SCHEDULES

SCALE: SHEET 2 OF 2 SHEETS STA. TO STA.

F.A.P. RTE.	SECTION	COUNTY	TOTAL SHEETS	SHEET NO.
317	(WS)/PP-2	IROQUOIS	14	8
CONTRACT NO. 66T09				
ILLINOIS FED. AID PROJECT				



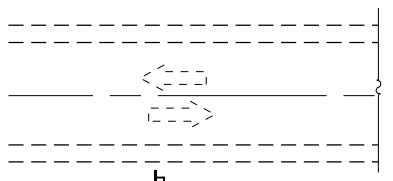
LEGEND

-  **EXISTING STOP SIGN**
-  **DIRECTION OF TRAFFIC**

**PLAN
ROAD CLOSURE DEAL**

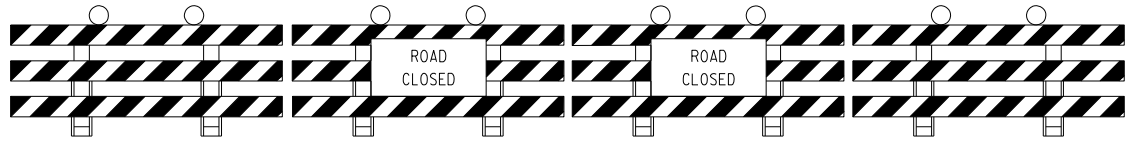
TYPE III BARRICADES WITH
STEADY BURNING LIGHTS

TYPE III BARRICADES WITH
STEADY BURNING LIGHTS



**WEIGH
STATION
CLOSED**
BLACK ON ORANGE
48" X 30" (FO)

**WEIGH
STATION
CLOSED**
BLACK ON ORANGE
48" X 30" (FO)



TYPE III BARRICADES

MODEL: Default
FILE NAME: c:\pwwork\work\illinois.gov_oladete.o.popoola@illinois.gov\11405361D366T09.dgn

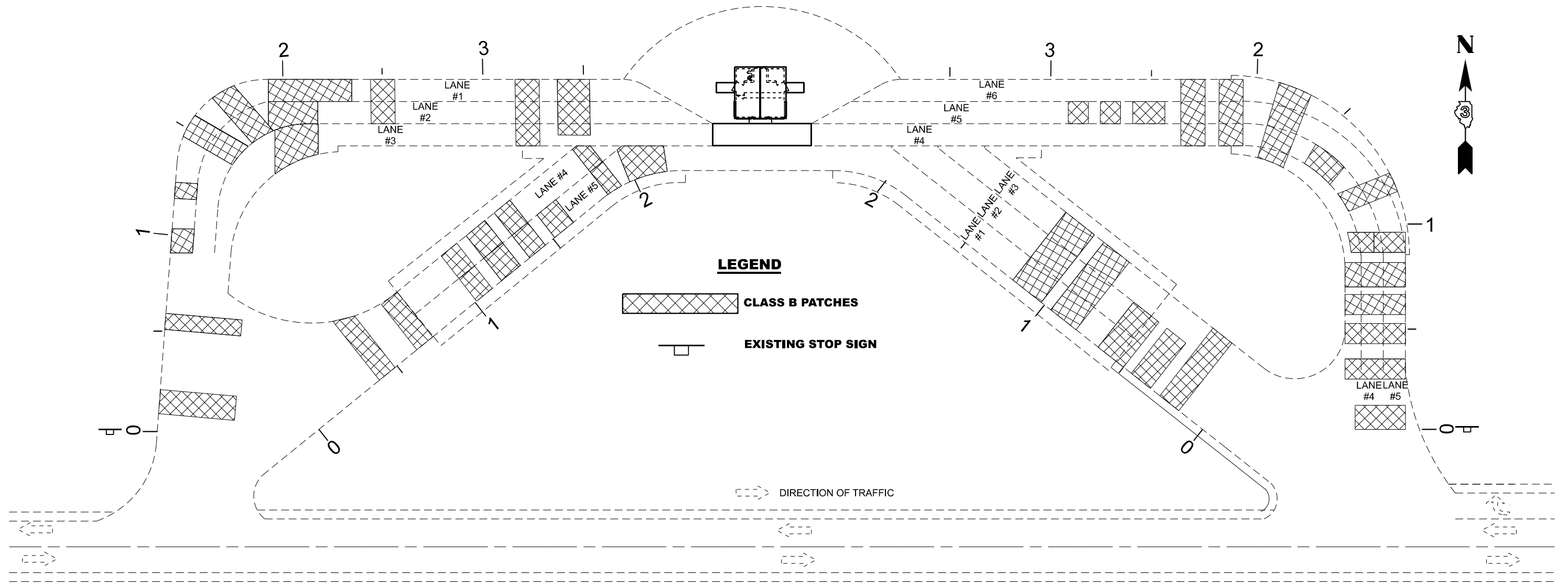
USER NAME = Oladete,O.Popoola	DESIGNED - RW	REVISED -
	DRAWN - RW	REVISED -
	CHECKED - JS	REVISED -
PLOT DATE = 4/3/2026	DATE - 7/25/2025	REVISED -

**STATE OF ILLINOIS
DEPARTMENT OF TRANSPORTATION**

**SHELDON WEIGH STATION
TRAFFIC CONTROL AND PROTECTION (SPECIAL)**

SCALE: SHEET 1 OF 1 SHEETS STA. TO STA.

F.A.P. RTE. 317	SECTION (WS)PP-2	COUNTY IROQUOIS	TOTAL SHEETS 14	SHEET NO. 9
CONTRACT NO. 66T09				
ILLINOIS FED. AID PROJECT				



LEGEND

 CLASS B PATCHES

 EXISTING STOP SIGN

 DIRECTION OF TRAFFIC

**PLAN
SHELDON WEIGH STATION
CLASS B PATCHING**

MODEL: Default
FILE NAME: c:\p\work\pwwd\illinois.gov_oladete.o.popoola@illinois.gov\1140536.D366T09.dgn

USER NAME = Oladete,O.Popoola	DESIGNED - RW	REVISED -
	DRAWN - RW	REVISED -
	CHECKED - JS	REVISED -
PLOT DATE = 4/3/2026	DATE - 7/25/2025	REVISED -

**STATE OF ILLINOIS
DEPARTMENT OF TRANSPORTATION**

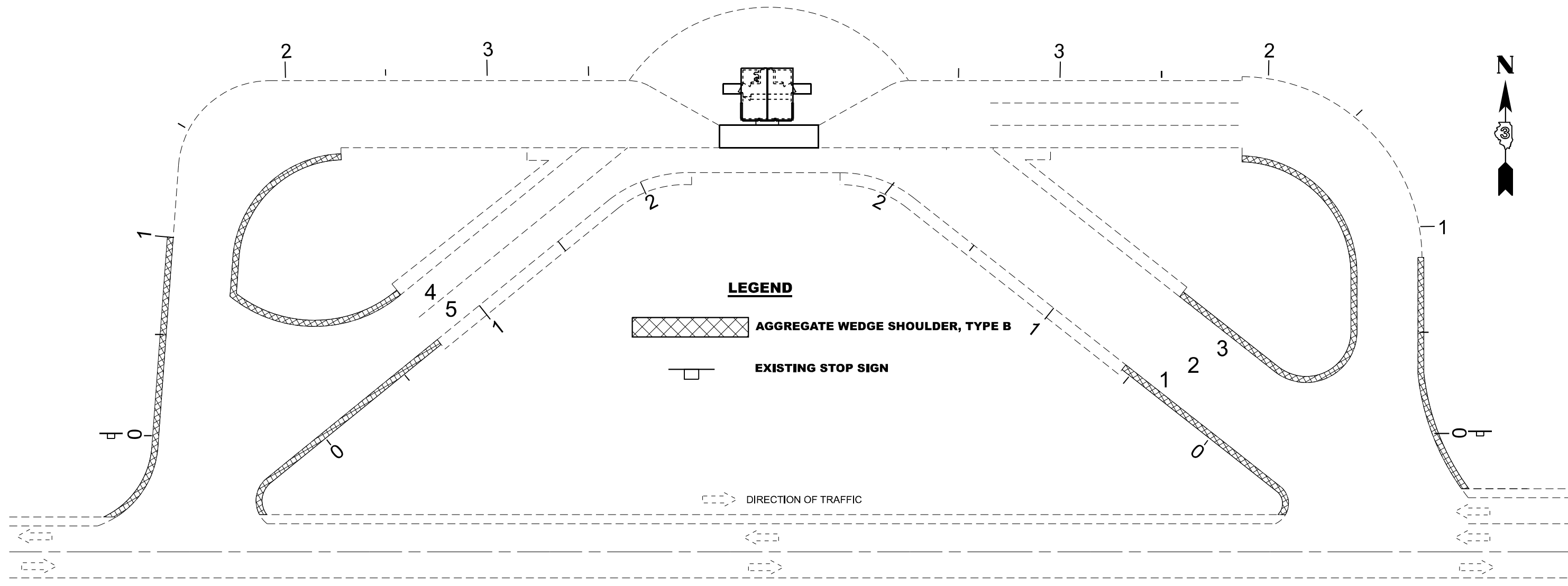
**SHELDON WEIGH STATION
CLASS B PATCHING PATCHING**

SCALE: SHEET 1 OF 1 SHEETS STA. TO STA.

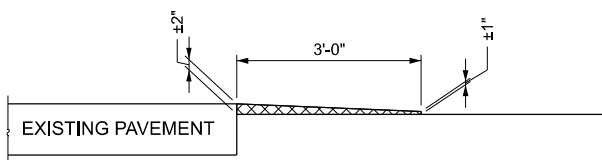
F.A.P. RTE. 317	SECTION (WS)PP-2	COUNTY IROQUOIS	TOTAL SHEETS 14	SHEET NO. 10
ILLINOIS			FED. AID PROJECT	

CONTRACT NO. 66T09

MODEL: Default
 FILE NAME: c:\pwworking\illinois.gov\oladete.o.popoola@illinois.gov\d140536.D366T09.dgn



PLAN
SHELDON WEIGH STATION
CLASS B PATCHING



AGGREGATE WEDGE SHOULDER DETAIL

USER NAME = Oladete,O.Popoola	DESIGNED - RW	REVISED -
	DRAWN - RW	REVISED -
	CHECKED - JS	REVISED -
PLOT DATE = 4/3/2026	DATE - 7/25/2025	REVISED -

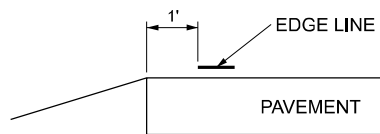
STATE OF ILLINOIS
DEPARTMENT OF TRANSPORTATION

SHELDON WEIGH STATION
CLASS B PATCHING

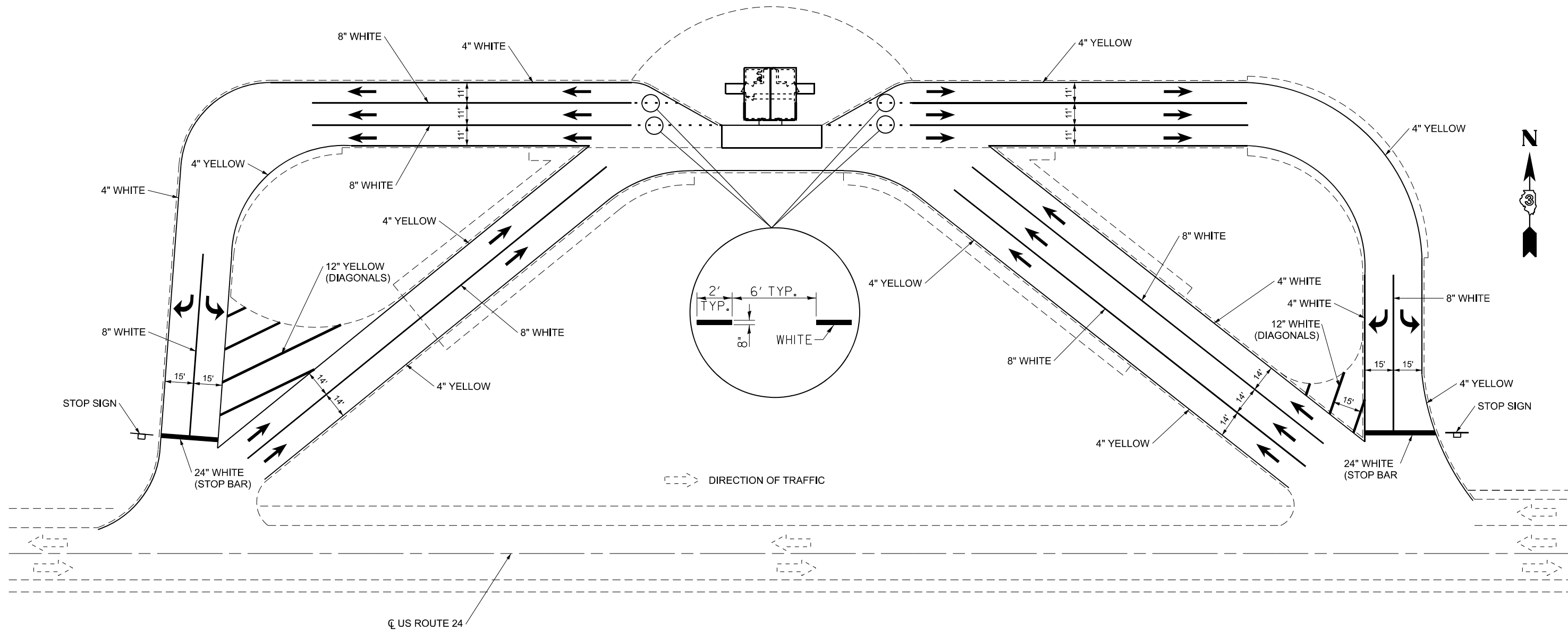
SCALE: SHEET 1 OF 1 SHEETS STA. TO STA.

F.A.P. RTE. 317	SECTION (WS)/PP-2	COUNTY IROQUOIS	TOTAL SHEETS 14	SHEET NO. 11
ILLINOIS			FED. AID PROJECT	





EDGE LINE



**PLAN
SHELDON WEIGH STATION
PAVEMENT MARKING**

MODEL: Default
FILE NAME: c:\p\work\pav\illinois.gov_oladete_o.poppoola@illinois.gov\1140536.D366T09.dgn

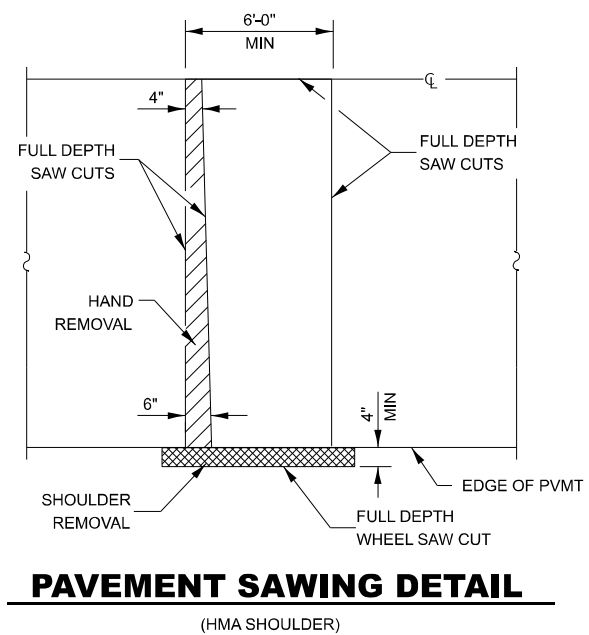
USER NAME = Oladete,O.Poppoola	DESIGNED - RW	REVISED -
	DRAWN - RW	REVISED -
	CHECKED - JS	REVISED -
PLOT DATE = 4/3/2026	DATE - 7/25/2025	REVISED -

**STATE OF ILLINOIS
DEPARTMENT OF TRANSPORTATION**

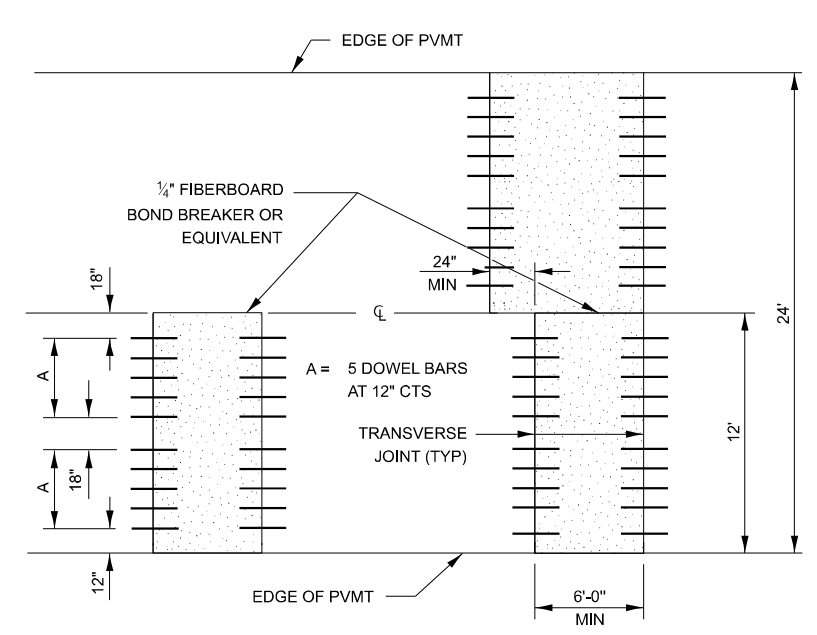
**SHELDON WEIGH STATION
PAVEMENT MARKING DETAILS**

SCALE: SHEET 1 OF 1 SHEETS STA. TO STA.

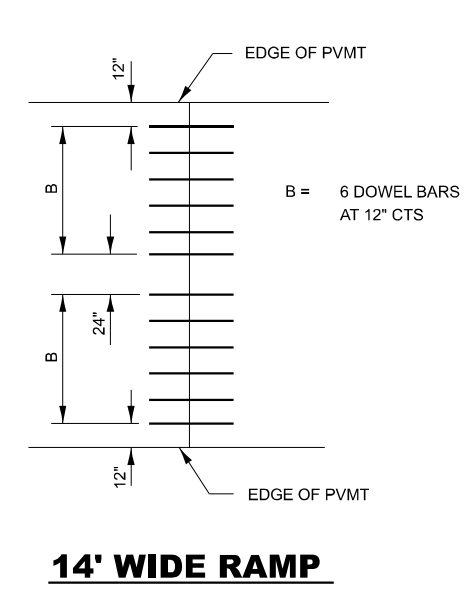
F.A.P. RTE. 317	SECTION (WS)/PP-2	COUNTY IROQUOIS	TOTAL SHEETS 14	SHEET NO. 12
ILLINOIS FED. AID PROJECT			CONTRACT NO. 66T09	



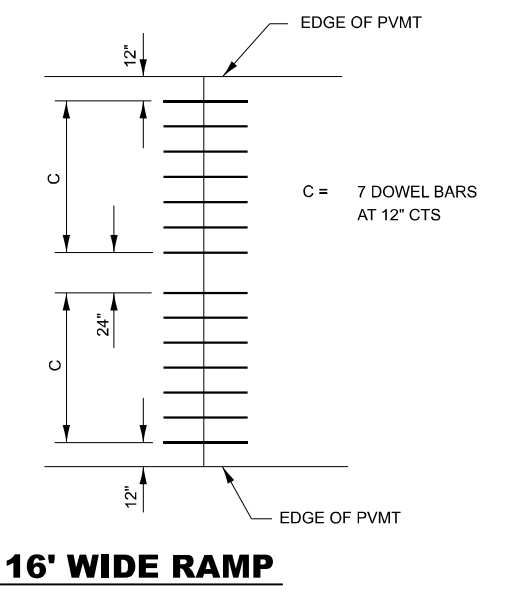
PAVEMENT SAWING DETAIL
(HMA SHOULDER)



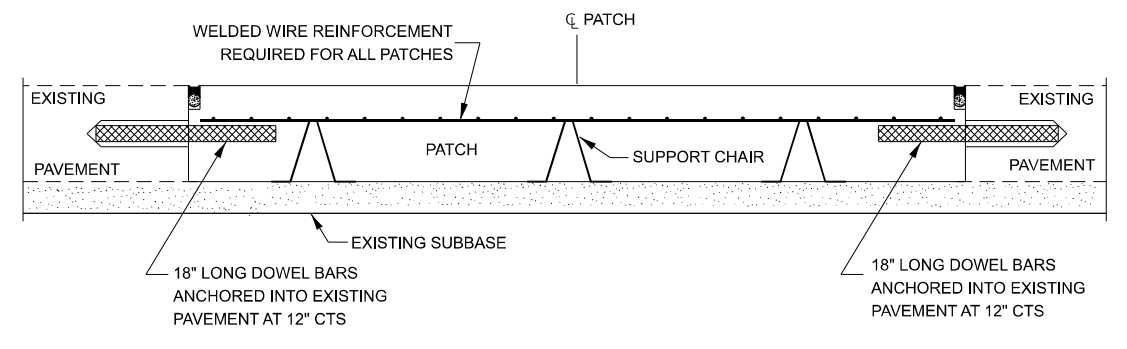
12' WIDE LANES



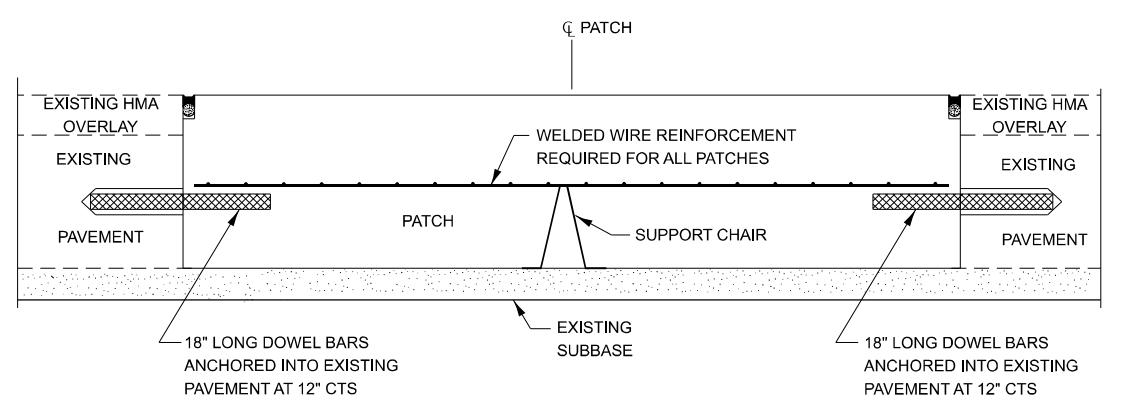
14' WIDE RAMP



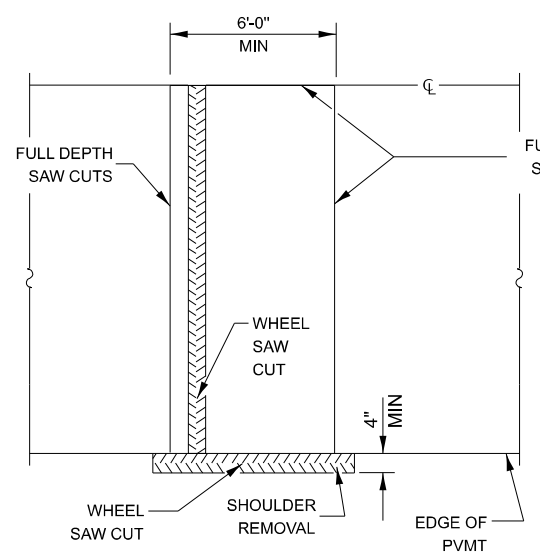
16' WIDE RAMP



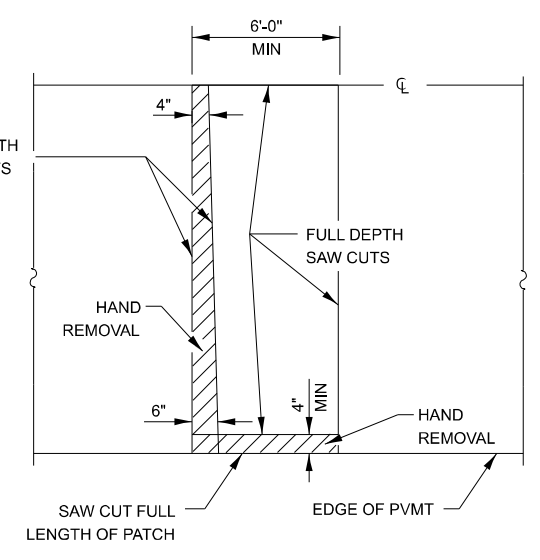
PATCHING WITHOUT HMA OVERLAY



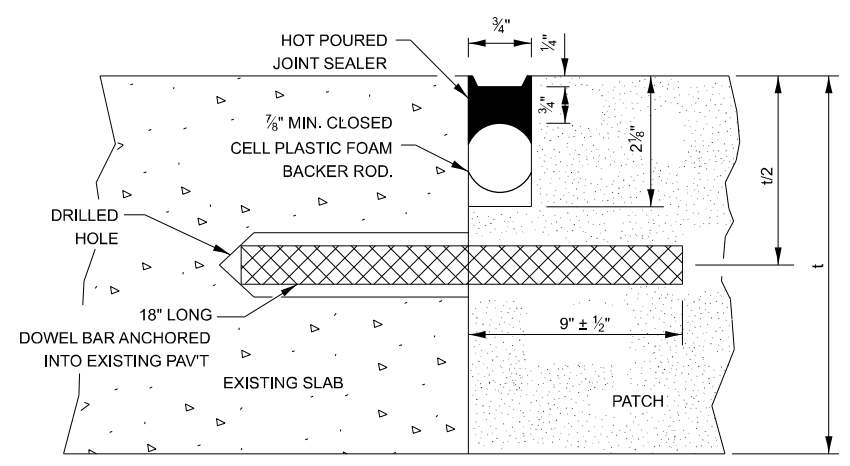
PATCHING WITH HMA OVERLAY



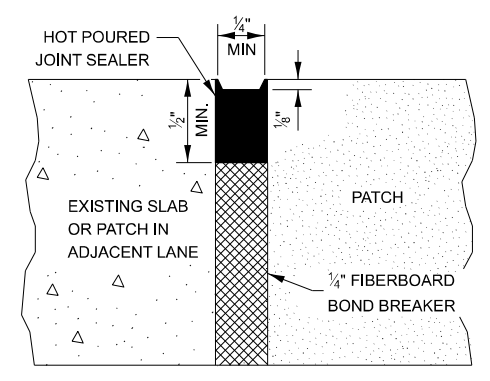
ALTERNATE SAWING DETAIL
(HMA SHOULDER)



PAVEMENT SAWING DETAIL
(PCC SHOULDER)



TRANSVERSE JOINT



CENTERLINE JOINT

DOWEL BAR TABLE		
PAVEMENT THICKNESS	DOWEL BAR DIAMETER	HOLE DIAMETER
8" OR GREATER	1 1/2"	1 5/8"
7" THRU 7.99"	1 1/4"	1 3/8"
LESS THAN 7"	1"	1 1/8"

GENERAL NOTES

THE TRANSVERSE JOINTS FOR CLASS B PATCHES SHALL ALIGN WITH JOINTS OR CRACKS IN THE ADJACENT LANE WHENEVER POSSIBLE.

SEE STANDARD 420701 FOR DETAILS OF PAVEMENT WELDED WIRE REINFORCEMENT.

MODEL: Default FILE NAME: c:\p\work\pav\illinois.gov_oladale.o.popoola\illinois.gov\1140536.D366T09.dgn

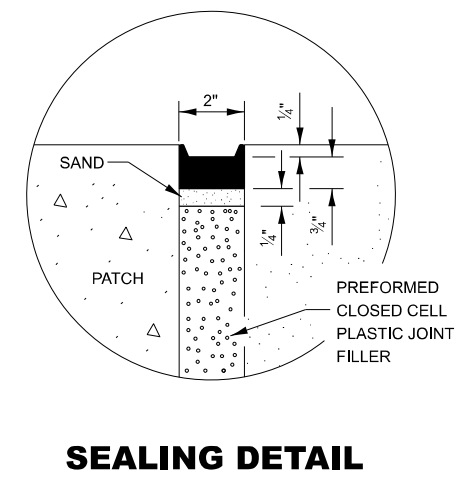
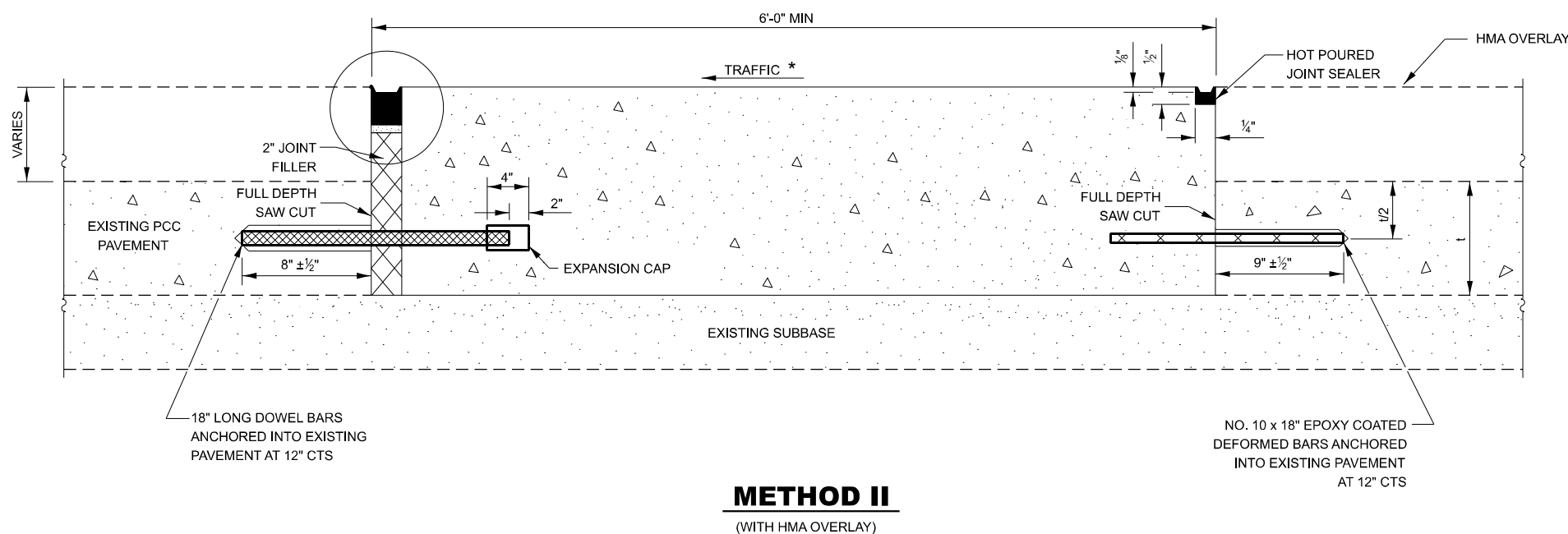
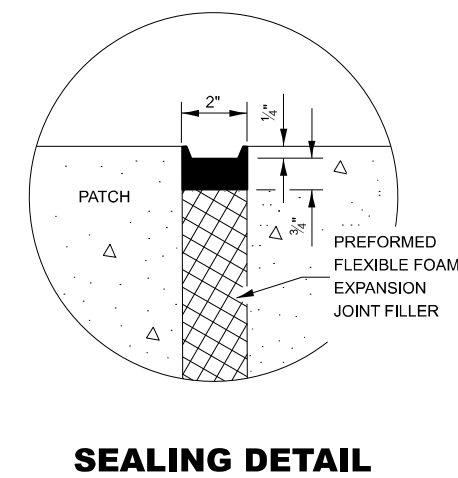
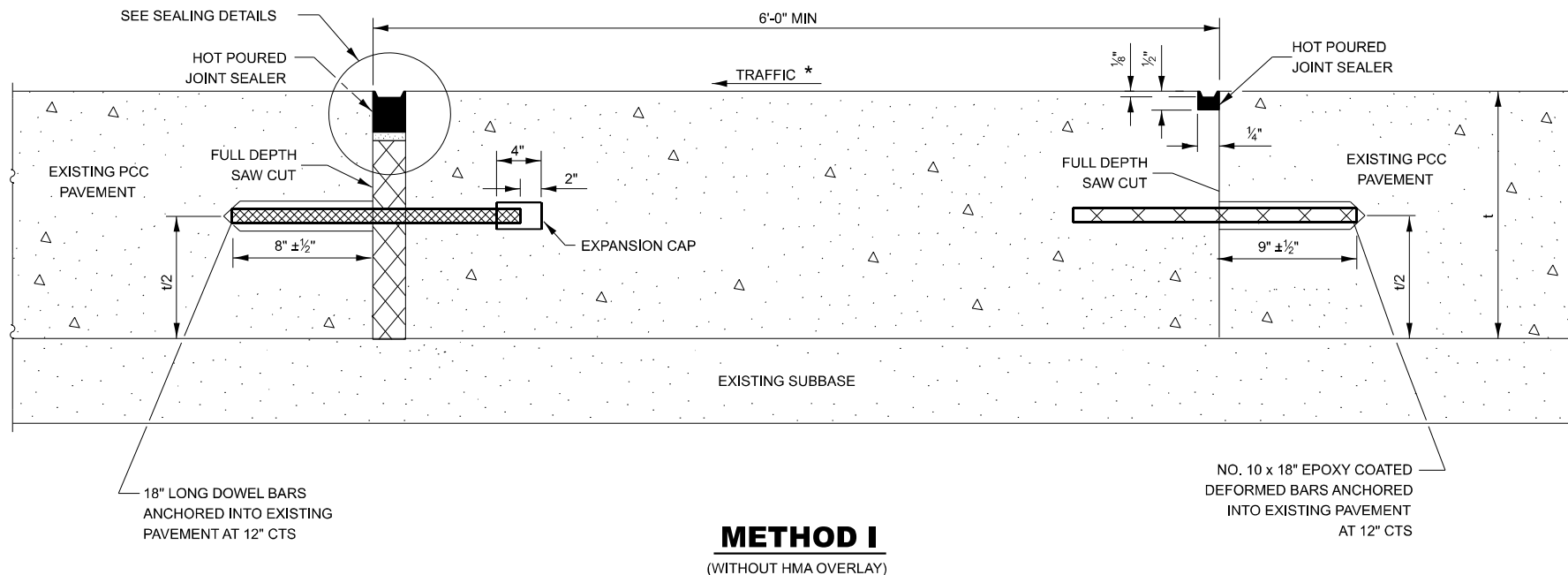
USER NAME = Oladale,O.Popoola	DESIGNED - RW	REVISED -
	DRAWN - RW	REVISED -
	CHECKED - JS	REVISED -
PLOT DATE = 4/3/2026	DATE - 7/25/2025	REVISED -

**STATE OF ILLINOIS
DEPARTMENT OF TRANSPORTATION**

CLASS B PATCHING DETAILS

SCALE: SHEET 1 OF 2 SHEETS STA. TO STA.

F.A.P. RTE. 317	SECTION (WS)/PP-2	COUNTY IROQUOIS	TOTAL SHEETS 14	SHEET NO. 13
CONTRACT NO. 66T09				
ILLINOIS FED. AID PROJECT				



NOTE

* WHEN RE-ESTABLISHING A TRANSVERSE EXPANSION JOINT ON A TWO-WAY ROAD, REVERSE THE ORIENTATION OF THE DOWEL BARS WITH RESPECT TO TRAFFIC FOR ONE OF THE PATCHES SUCH THAT THE JOINT WILL BE CONTINUOUS ACROSS BOTH LANES.

MODEL: Default
FILE NAME: c:\pwwork\work\illinois.gov_oladete.o.popoola@illinois.gov\d1140536\0366T09.dgn

USER NAME = Oladete,O.Popoola	DESIGNED - RW	REVISED -
	DRAWN - RW	REVISED -
	CHECKED - JS	REVISED -
PLOT DATE = 4/3/2026	DATE - 7/25/2025	REVISED -

STATE OF ILLINOIS
DEPARTMENT OF TRANSPORTATION

CLASS B PATCHING DETAILS

SCALE: SHEET 2 OF 2 SHEETS STA. TO STA.

F.A.P. RTE. 317	SECTION (WS)PP-2	COUNTY IROQUOIS	TOTAL SHEETS 14	SHEET NO. 14
CONTRACT NO. 66T09				
ILLINOIS FED. AID PROJECT				