

INDEX OF SHEETS

- 1 . COVER SHEET
- 2 . GENERAL NOTES
- 3 . SUMMARY OF QUANTITIES
- 4 . TYPICAL SECTIONS
- 5 . BRIDGE DECK SEALING DETAILS
- 6 . ADDITIONAL INFORMATION

HIGHWAY STANDARDS

- 000001-09 STANDARD SYMBOLS, ABBREVIATIONS AND PATTERNS
- 001006 DECIMAL OF AN INCH AND OF A FOOT
- 701001-02 OFF-ROAD OPERATIONS 2L, 2W, MORE THAN 15' (4.5 m) AWAY
- 701006-05 OFF-ROAD OPERATIONS 2L, 2W, 15' (4.5 m) TO 24" (600 mm) FROM PAVEMENT EDGE
- 701101-05 OFF-ROAD OPERATIONS, MULTILANE, 15' (4.5 m) TO 24" (600 mm) FROM PAVEMENT EDGE
- 701106-02 OFF-ROAD OPERATIONS, MULTILANE, MORE THAN 15' (4.5 m) AWAY
- 701301-04 LANE CLOSURE, 2L, 2W, SHORT TIME OPERATIONS
- 701422-10 LANE CLOSURE, MULTILANE, FOR SPEEDS ≥ 45 MPH TO 55 MPH
- 701901-11 TRAFFIC CONTROL DEVICES

**STATE OF ILLINOIS
DEPARTMENT OF TRANSPORTATION**

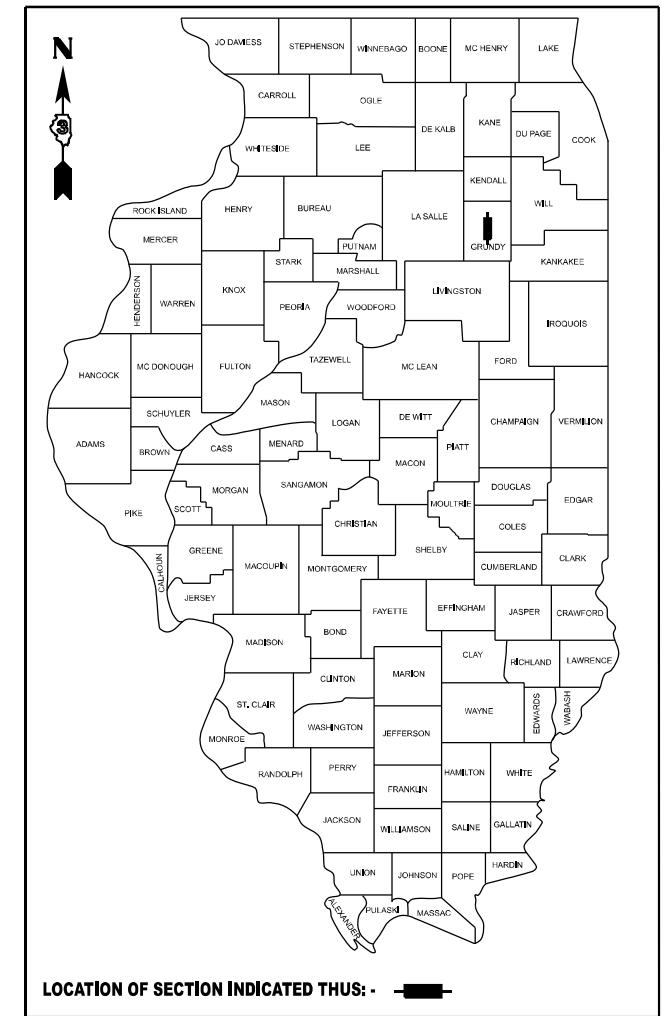
**PROPOSED
HIGHWAY PLANS**

**F.A.P. ROUTE 326 (IL 47)
SECTION (111BR-1)BC-4
PROJECT NHPP-QR9H(245)
BRIDGE WASHING
GRUNDY COUNTY**

C-93-171-25

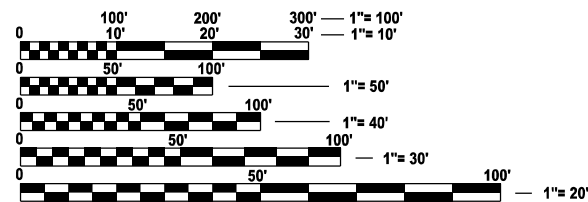
F.A.P. RTE.	SECTION	COUNTY	TOTAL SHEETS	SHEET NO.
326	(111BR-1)BC-4	GRUNDY	6	1
		ILLINOIS	CONTRACT NO. 66T12	

D-93-132-25



PROJECT LOCATION

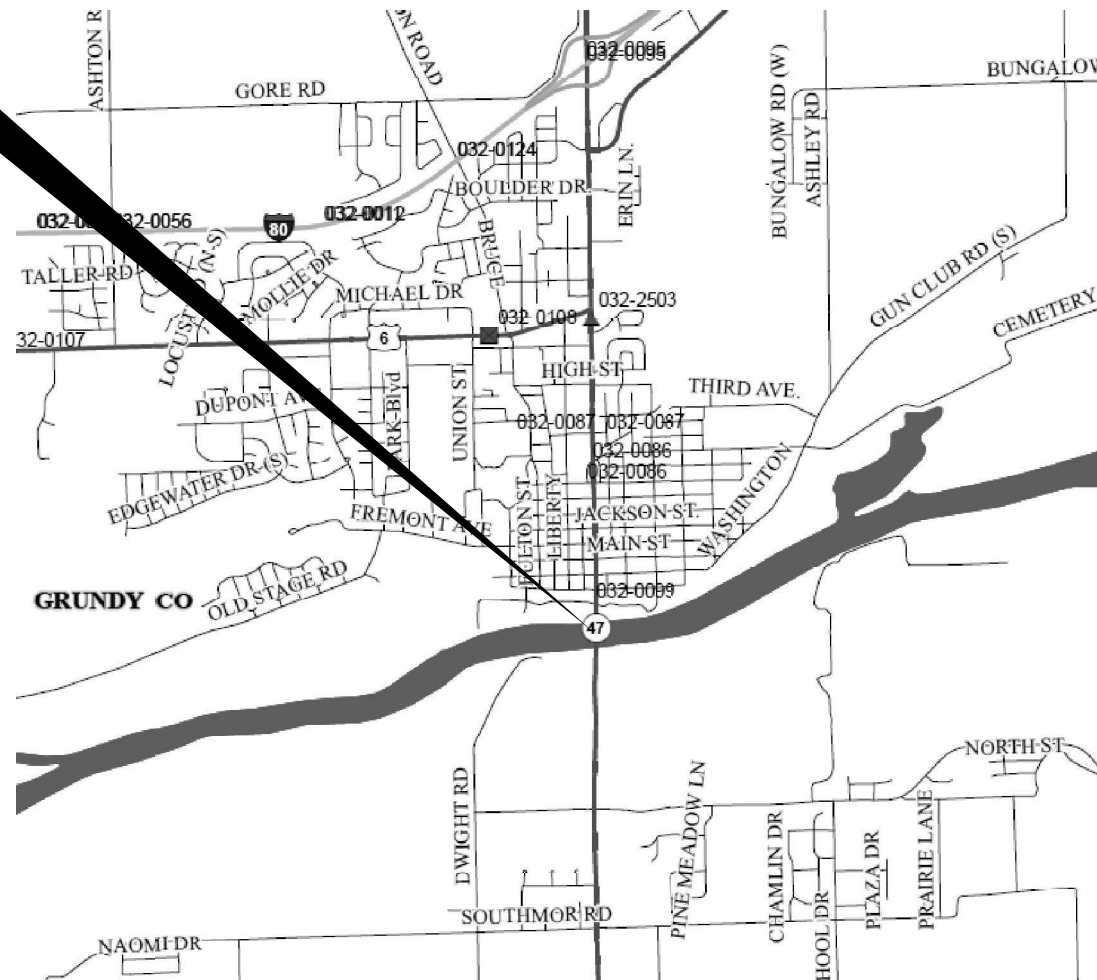
**STRUCTURE NO. 032-0099
CARRYING F.A.P. ROUTE 326 (IL 47)
OVER THE ILLINOIS RIVER, AND I & M CANAL
1.2 MILES SOUTH OF US ROUTE 6
GRUNDY COUNTY**



FULL SIZE PLANS HAVE BEEN PREPARED USING STANDARD ENGINEERING SCALES. REDUCED SIZED PLANS WILL NOT CONFORM TO STANDARD SCALES. IN MAKING MEASUREMENTS ON REDUCED PLANS, THE ABOVE SCALES MAY BE USED.

**J.U.L.I.E.
JOINT UTILITY LOCATION INFORMATION FOR EXCAVATION
1-800-892-0123
OR 811**

**PROJECT ENGINEER: JUNIOR SENAT P.E.
UNIT CHIEF: RON WOODSHANK
DISTRICT 3 (815) 434-6131
CONTRACT NO. 66T12**



**FUNCTIONAL CLASSIFICATION
URBAN - OTHER PRINCIPLE ARTERIAL
F.A.P. ROUTE 623 (IL ROUTE 47)
2023 ADT = 18,100
P.V. 91.0 % S.U. 3.0 % M.U. 6.0 %**

STATE OF ILLINOIS
DEPARTMENT OF TRANSPORTATION

SUBMITTED March 25, 2026

Trisha Thompson
REGIONAL ENGINEER

May 8, 2026
[Signature]
ENGINEER OF DESIGN AND ENVIRONMENT

May 8, 2026
[Signature]
DIRECTOR OF HIGHWAYS PROJECT IMPLEMENTATION

**PRINTED BY THE AUTHORITY
OF THE STATE OF ILLINOIS**

CONSTRUCTION CODE
BRIDGE PAINTING
80% FED / 20% STATE

CODE NO.	ITEM	UNIT	TOTAL QUANTITY	BRIDGE
				0047 S.N. 032-0099
59200101	BRIDGE WASHING NO. 1	EACH	1	1
67100100	MOBILIZATION	L SUM	1	1
70100320	TRAFFIC CONTROL AND PROTECTION, STANDARD 701422	L SUM	1	1
70107025	CHANGEABLE MESSAGE SIGN	CAL DA	25	25
X5870015	BRIDGE DECK CONCRETE SEALER	SQ FT	70105	70105

MODEL: Default
FILE NAME: p:\bridge\p1\bridge.dwg
PLOT DATE: 3/18/2026

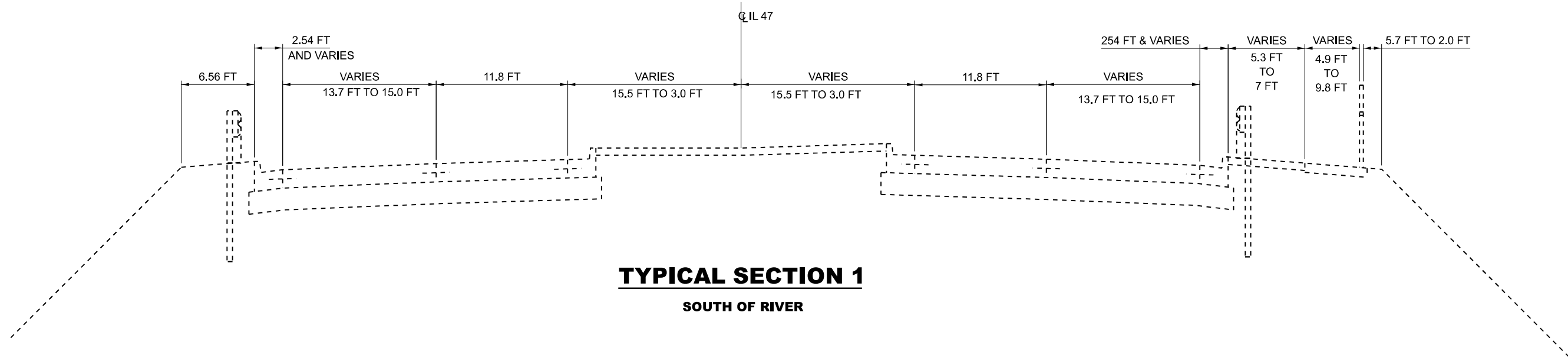
USER NAME = Cladele.O.Popoola	DESIGNED - RW	REVISED -
	DRAWN - RW	REVISED -
PLOT SCALE = \$SCALE\$	CHECKED - JS	REVISED -
PLOT DATE = 3/18/2026	DATE - 8/19/2025	REVISED -

STATE OF ILLINOIS
DEPARTMENT OF TRANSPORTATION

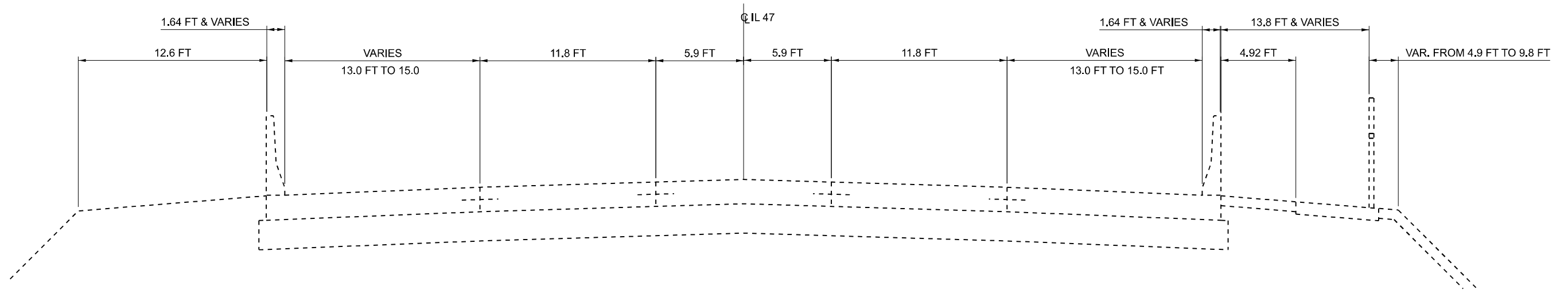
SUMMARY OF QUANTITIES

SCALE: SHEET 1 OF 1 SHEETS STA. TO STA.

F.A.P. RTE.	SECTION	COUNTY	TOTAL SHEETS	SHEET NO.
326	(111BR-1)BC-4	GRUNDY	6	3
CONTRACT NO. 66T12				
ILLINOIS FED. AID PROJECT				



TYPICAL SECTION 1
SOUTH OF RIVER



TYPICAL SECTION 2
NORTH OF RIVER

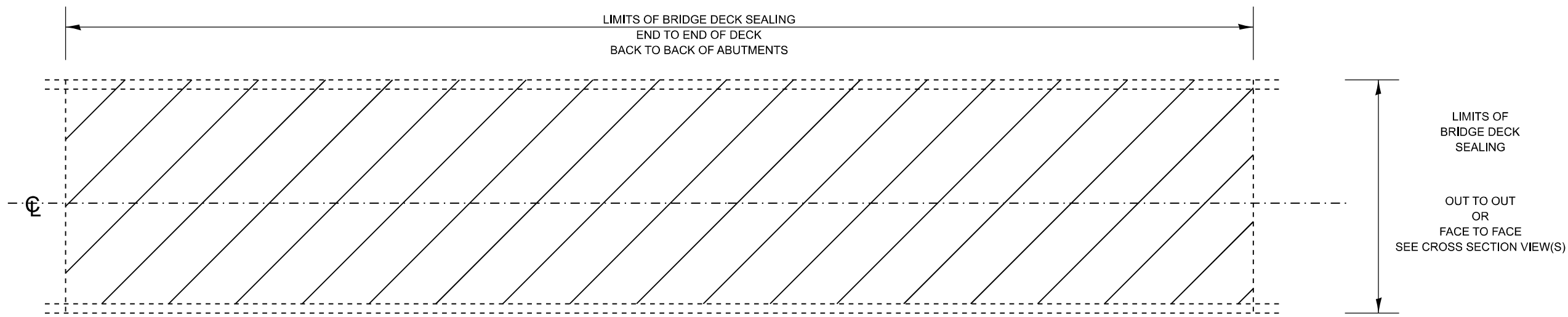
MODEL: D:\inf\...
FILE NAME: ...

USER NAME = Oladele,O.Popoola	DESIGNED - RW	REVISED -
	DRAWN - RW	REVISED -
PLOT SCALE = \$SCALE\$	CHECKED - JS	REVISED -
PLOT DATE = 3/18/2026	DATE - 8/19/2025	REVISED -

STATE OF ILLINOIS
DEPARTMENT OF TRANSPORTATION

TYPICAL SECTION			
SCALE:	SHEET 1	OF 1	SHEETS
	STA.	TO STA.	

F.A.P. RTE.	SECTION	COUNTY	TOTAL SHEETS	SHEET NO.
326	(111BR-1)BC-4	GRUNDY	6	4
CONTRACT NO. 66T12				
ILLINOIS FED. AID PROJECT				

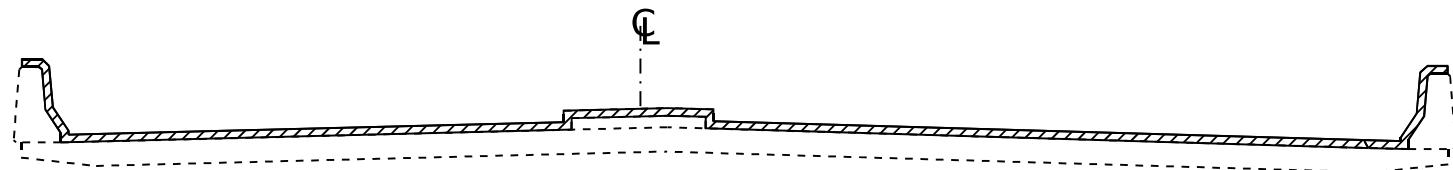


PLAN

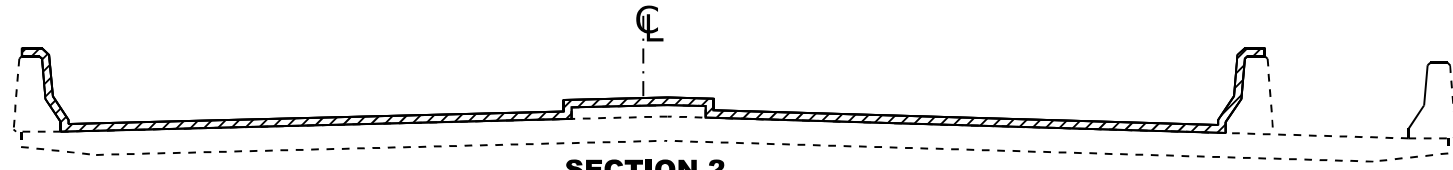
NOTE: BRIDGE APPROACH PAVEMENT SHALL NOT BE SEALED.

EXISTING PAVEMENT MARKINGS AND RAISED REFLECTIVE PAVEMENT MARKERS SHALL BE TEMPORARILY COVERED PRIOR TO APPLICATION OF THE DECK SURFACE TREATMENT TO PREVENT THE MATERIAL FROM BEING APPLIED TO THE MARKINGS AND TO PROTECT THE REFLECTIVE PROPERTIES OF THE MARKINGS. THE TEMPORARY COVERING MATERIAL USED SHALL BE SUCH THAT IT WILL NOT AFFECT THE MARKING'S REFLECTIVITY WHEN REMOVED AFTER APPLICATION OF THE DECK SURFACE TREATMENT AND PRIOR TO OPENING TO TRAFFIC. COST INCLUDED WITH CONCRETE SEALER.

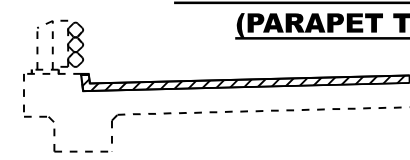
EXISTING EXPANSION JOINTS SHALL BE TEMPORARILY COVERED, PRIOR TO APPLICATION OF THE DECK SURFACE TREATMENT, TO PREVENT THE MATERIAL FROM BEING APPLIED TO THE JOINTS. THE TEMPORARY COVERING SHALL BE REMOVED AFTER THE APPLICATION OF THE DECK SURFACE TREATMENT AND PRIOR TO OPENING TO TRAFFIC. COST IS INCLUDED WITH CONCRETE SEALER.



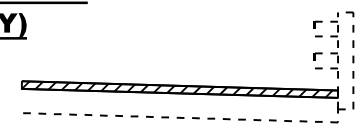
**SECTION 1
WITH PARAPET & MEDIAN**



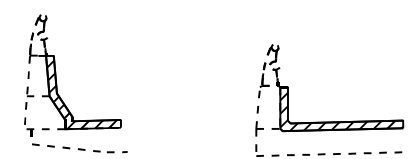
**SECTION 2
WITH PARAPET, MEDIAN
& SHARED - USE PATH OR SIDEWALK
(PARAPET TYPES MAY VARY)**



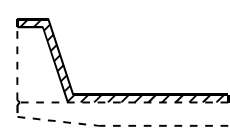
**SECTION 3
WITH CURB AND
TUBULAR THRIE BEAM RETROFIT RIAL**



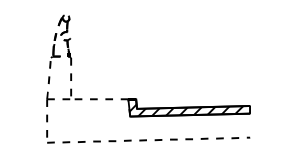
**SECTION 4
WITH BRIDGE RAIL**



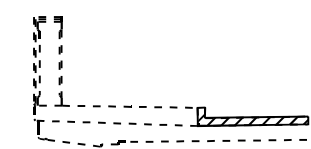
**SECTION 5
WITH CONCRETE
AND ALUMINUM RAILER**



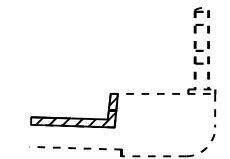
**SECTION 6
WITH CONSTANT SLOPE PARAPET**



**CONCRETE AND
ALUMINUM RAILING**



**CONCRETE
BRIDGE RAILING**



BRIDGE RAIL

VARIOUS SECTION WITH SIDEWALK AND OR CONCRETE CURB

AREA TO BE SEALED

MODEL: Default
FILE NAME: \\p01010001\jerry\my.com\PM\DOT\Documents\DOT Office\District 3\ORD Projects\66T12\CAD\Detail\66T12.dgn

USER NAME = Oladele,O.Popoola	DESIGNED - RW	REVISED -
	DRAWN - RW	REVISED -
PLOT SCALE = \$SCALE\$	CHECKED - JS	REVISED -
PLOT DATE = 3/18/2026	DATE - 8/19/2025	REVISED -

**STATE OF ILLINOIS
DEPARTMENT OF TRANSPORTATION**

**CONCRETE BRIDGE DECK &
PARAPET SEALING DETAILS**

SCALE: SHEET 1 OF 1 SHEETS STA. TO STA.

F.A.P. RTE.	SECTION	COUNTY	TOTAL SHEETS	SHEET NO.
326	(111BR-1)BC-4	GRUNDY	6	5
CONTRACT NO. 66T12				
ILLINOIS FED. AID PROJECT				

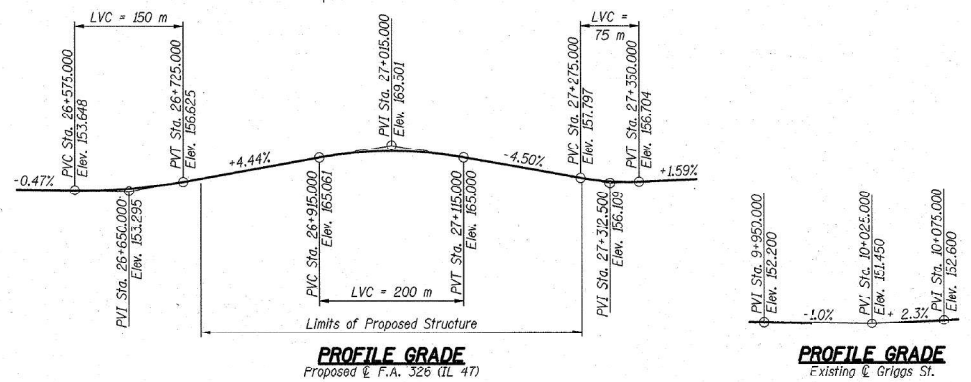
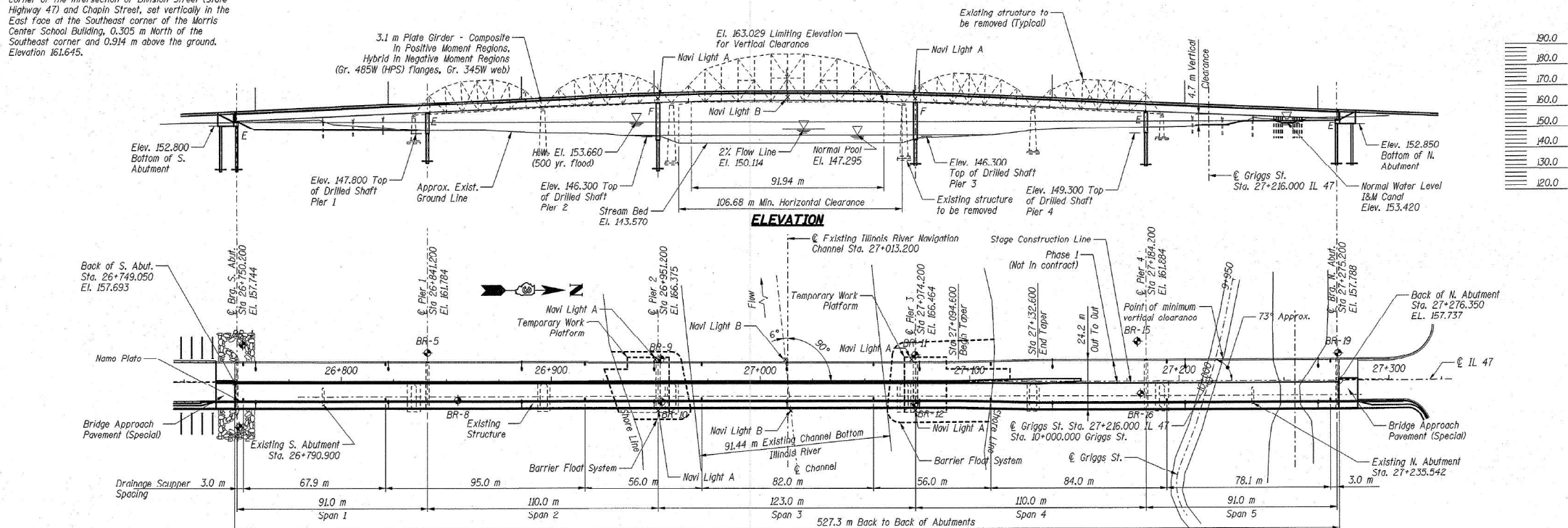
INFORMATION ONLY

F.A. RTE.	SECTION	COUNTY	TOTAL SHEETS	SHEET NO.
326		GRUNDY	137	069
STA.	TO STA.			
FED. ROAD DIST. NO.	ILLINOIS FED. AID PROJECT			

• (111)BR-1, DM

BENCHMARK

U.S.G.S. Benchmark "D 141 1947" at Morris Illinois about 0.596 km North along State Highway 47 from the Courthouse, at the Northeast corner of the intersection of Division Street (State Highway 47) and Chapin Street, set vertically in the East face of the Southeast corner of the Morris Center School Building, 0.305 m North of the Southeast corner and 0.914 m above the ground. Elevation 161.645.



GENERAL PLAN

Soil Boring Location

APPROVED
FOR STRUCTURAL ADEQUACY ONLY

Ralph E. Anderson
ENGINEER OF BRIDGES AND STRUCTURES



DESIGN SPECIFICATIONS

1996 AASHTO Standard Specifications for Highway Bridges, 1997 thru 1999 Interim Specifications, AASHTO Guide Specifications & Commentary for Vessel Collision Design of Highway Bridges, Method 1.

DESIGN LOADING

Roadway Live Load: MS-18
 Sidewalk Live Load = 1.7 kN/m²
 Future Wearing Surface = 2.4 kN/m²

DESIGN STRESSES

Concrete, f_c = 24 MPa
 Reinforcement, f_y = 400 MPa
 Structural Steel, f_y = 345 MPa (M270 M Grade 345W)
 f_y = 485 MPa (M270 M Grade 485W (HPS))
 f_y = 250 MPa (M270 M Grade 250)

SEISMIC DATA

Seismic Performance Category (SPC) = A
 Importance Classification = I
 Bedrock Acceleration Coefficient (A) = 0.04g
 Site Coefficient (S) = 1.0

Notes

- All dimensions are in millimeters (mm) except as noted.
- NAVI Light A = Permanent Navigational Light (180° red light and reflector).
- NAVI Light B = Permanent Navigational Light (360° green light and reflector).
- E Indicates Guided Expansion Pot Bearings.
- F Indicates Fixed Pot Bearings.
- For details of temporary Barrier Float System, see Sht. S-002.

EXISTING STRUCTURES

Existing Structure: SN 032-0029, 11 spans, 444.642 m Bk. to Bk. of abutments. Built in 1933. Three simple, multiple stringer, north and south approach spans (14.78 m, 14.33 m and 14.63 m); two simple north and south steel Pratt through truss approach spans (61.48 m and 61.58 m) and the main simple steel Pratt through truss span (111.05 m) over the Illinois River for a total of eleven (11) spans. The roadway width is 7.01 m from edge to edge of curb. The substructure consists of reinforced concrete elements with piles.

Existing Structure: SN 032-0063, Single, multiple stringer, 5.18 m simple span, with timber/timber pile substructure. The roadway width is 7.10 m between existing railings with no shoulders or median.

The existing structures are to remain in place during the previous construction phase. As part of this contract, the existing structure shall be removed and the construction of the five-span continuous steel plate girder bridge will be completed. Roadway to remain open to two-way traffic utilizing slage construction.

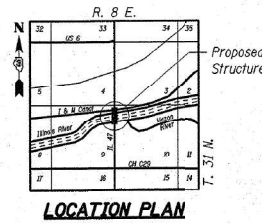
SALVAGE

Name Plates will be salvaged and delivered to the Engineer.

WATERWAY INFORMATION

Drainage Area = 19365.7 km² Low Grade Elev. 153.73 m @ Sta. 26+100 to 26+700

Flood	Freq. Yr.	Q m ³ /sec	Opening Sq. m		Nat. H.W.E.		Head - m		Headwater Elev. m	
			Exist.	Prop.	Exist.	Prop.	Exist.	Prop.	Exist.	Prop.
Design	10	1875	4071.4	4061.3	152.00	0.08	0.07	152.08	152.07	
Base	50	2435	5258.6	5244.1	152.77	0.09	0.08	152.86	152.85	
Overtopping	100	2656	5668.5	5654.1	153.03	0.09	0.08	153.13	153.12	
Max. Calc.	500	3151	6585.3	6566.5	153.66	0.09	0.09	153.70	153.70	



SHT. S-001 REVISIONS

NAME	DATE

ILLINOIS DEPARTMENT OF TRANSPORTATION
 IL 47 OVER 1&M CANAL AND ILLINOIS RIVER
 F.A. RTE 326 SEC (111,118) W&S-1J (111) BR, BR-1
 STRUCTURE NUMBER 032-0029
 STATION 27+013.200, GRUNDY COUNTY
 PUBLIC WATERS

GENERAL PLAN AND ELEVATION

DATE: 07/15/02

DRAWN BY: JLR
 CHECKED BY: BTD

TENG
 TENG & ASSOCIATES, INC.
 ENGINEERS/ARCHITECTS/PLANNERS
 CHICAGO, ILLINOIS

USER NAME = Oladele.O.Popoola	DESIGNED - RW	REVISED -
DRAWN - RW	CHECKED - JS	REVISED -
PLOT SCALE = \$SCALES	DATE - 8/19/2025	REVISED -
PLOT DATE = 3/18/2026		

STATE OF ILLINOIS
 DEPARTMENT OF TRANSPORTATION

SCALE: SHEET 1 OF 1 SHEETS STA. TO STA.

F.A.P. RTE.	SECTION	COUNTY	TOTAL SHEETS	SHEET NO.
326	(111)BR-1)BC-4	GRUNDY	6	6
CONTRACT NO. 66T12				
ILLINOIS FED. AID PROJECT				