

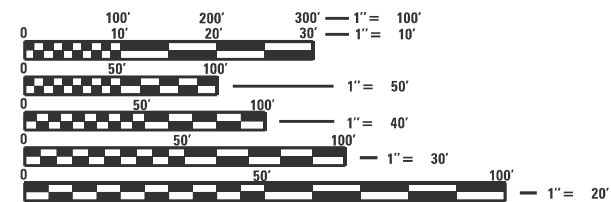
**06-12-2026 LETTING ITEM 070**

INDEX OF SHEETS

- 1 COVER SHEET
- 2 GENERAL NOTES
- 3-5 SUMMARY OF QUANTITIES
- 6-7 SCHEDULES
- 8-10 IL 251 & MAY/IASA I F RD TRAFFIC SIGNAL PLAN, CABLE/PHASE DESIGNATION PLANS
- 11-13 IL 251 & WB I-80 RAMPS TRAFFIC SIGNAL PLAN, CABLE/PHASE DESIGNATION PLANS
- 14-16 IL 251 & EB I-80 RAMPS TRAFFIC SIGNAL PLAN, CABLE/PHASE DESIGNATION PLANS
- 17-19 MAST ARM DETAILS
- 20-22 FOR INFORMATION PLANS
- 23-27 SOIL BORINGS

LIST OF ILLINOIS DOT HIGHWAY STANDARDS

- 000001-09 STANDARD SYMBOLS, ABBREVIATIONS AND PATTERNS
- 001006 DECIMAL OF AN INCH AND OF A FOOT
- 701101-05 OFF-ROAD OPERATIONS, MULTILANE, 15' TO 24" FROM PAVEMENT EDGE
- 701106-02 OFF-ROAD OPERATIONS, MULTILANE, MORE THAN 15' AWAY
- 701301-04 LANE CLOSURE, 2L, 2W, SHORT TIME OPERATIONS
- 701456-05 PARTIAL EXIT RAMP CLOSURE FREEWAY/EXPRESSWAY
- 701501-06 URBAN LANE CLOSURE, 2L, 2W, UNDIVIDED
- 701701-10 URBAN LANE CLOSURE, MULTILANE INTERSECTION
- 701901-11 TRAFFIC CONTROL DEVICES
- 720016-04 MAST ARM MOUNTED STREET NAME SIGNS
- 857001-01 STANDARD PHASE DESIGNATION DIAGRAMS AND PHASE SEQUENCES
- 862001-01 UNINTERRUPTABLE POWER SUPPLY (UPS)
- 873001-02 TRAFFIC SIGNAL GROUNDING & BONDING
- 877001-08 STEEL MAST ARM ASSEMBLY AND POLE 16' THROUGH 55'
- 878001-11 CONCRETE FOUNDATION DETAILS
- 880006-01 TRAFFIC SIGNAL MOUNTING DETAILS



FULL SIZE PLANS HAVE BEEN PREPARED USING STANDARD ENGINEERING SCALES. REDUCED SIZED PLANS WILL NOT CONFORM TO STANDARD SCALES. IN MAKING MEASUREMENTS ON REDUCED PLANS, THE ABOVE SCALES MAY BE USED.

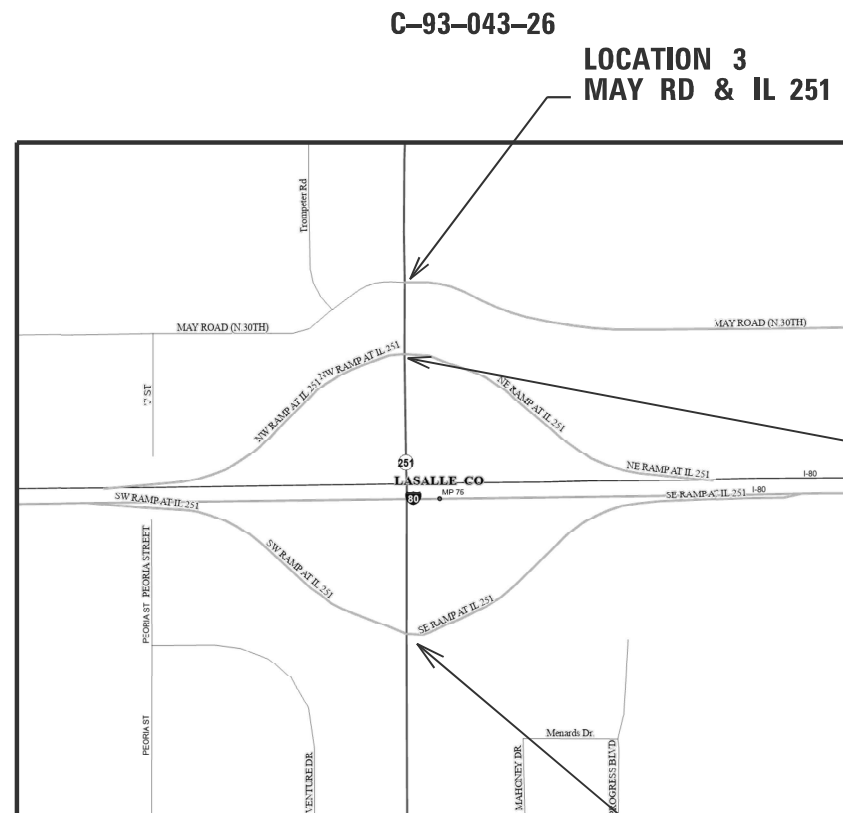
J.U.L.I.E.  
JOINT UTILITY LOCATION INFORMATION FOR EXCAVATION  
1-800-892-0123  
OR 811

**PROJECT ENGINEER: JOE KANNEL P.E.**  
**SQUAD LEADER: MOHAMED YOUSIF**  
**DISTRICT 3 NO. (815) 434-6131**  
**TOWNSHIP: PERU**  
**CONTRACT NO. 66T15**

**STATE OF ILLINOIS  
DEPARTMENT OF TRANSPORTATION**

**PROPOSED  
HIGHWAY PLANS**

**FAP 46 & FAU 6101 (IL 251)  
SECTION (50-2) & (1)TS  
PROJECT STP-NHPP-ZI60(935)  
TRAFFIC SIGNAL MAST ARM REPLACEMENT  
LASALLE COUNTY**



**LOCATION 3  
MAY RD & IL 251**

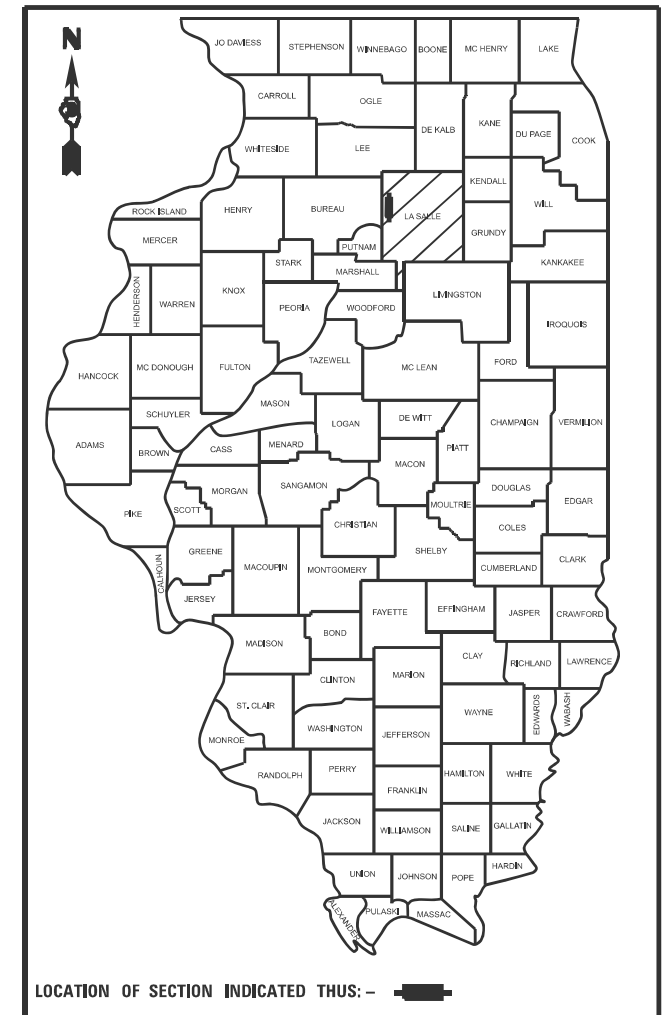
**LOCATION 2  
I-80 WB EXIT RAMP AT IL 251**

**LOCATION 1  
I-80 EB EXIT RAMP AT IL 251**

**LOCATION MAP**  
GROSS & NET LENGTH = POINT LOCATION

F.A. RTE.	SECTION	COUNTY	TOTAL SHEETS	SHEET NO.
*	(50-2) & (1)TS	LA SALLE	27	1
FAP 46 & FAU 6101 (IL 251)		ILLINOIS	CONTRACT NO. 66T15	

D-93-020-26



LOCATION OF SECTION INDICATED THIS: - [Symbol]

**FUNCTIONAL CLASSIFICATION**  
**OTHER PRINCIPAL ARTERIAL**  
**FUNCTION ROUTE I-80 & IL 251**  
2023 ADT = 6550  
PV=81.7% SU=4.6% MU=13.7%

STATE OF ILLINOIS  
DEPARTMENT OF TRANSPORTATION

SUBMITTED **March 27, 2026**

*Frisa Thompson*  
REGIONAL ENGINEER

May 8, 2026  
*[Signature]*  
ENGINEER OF DESIGN AND ENVIRONMENT

May 8, 2026  
*[Signature]*  
DIRECTOR OF HIGHWAYS PROJECT IMPLEMENTATION

**PRINTED BY THE AUTHORITY  
OF THE STATE OF ILLINOIS**

**GENERAL NOTES**

1. THE TRAFFIC SIGNAL SECTION AT THE ILLINOIS DEPARTMENT OF TRANSPORTATION, DISTRICT 3, SHALL BE NOTIFIED AT 815-434-6131 AT LEAST 72 HOURS PRIOR TO TURNING ON ANY FLASHER OR CONTROLLER UNITS.
2. THE CONTRACTOR SHALL BE RESPONSIBLE FOR PROTECTING UTILITY PROPERTY DURING CONSTRUCTION OPERATIONS AS OUTLINED IN ARTICLE 107.31 OF THE STANDARD SPECIFICATIONS. A MINIMUM OF 48 HOURS ADVANCE NOTICE IS REQUIRED FOR NON-EMERGENCY WORK. THE JULIE NUMBER IS 800-892-0123. THE MEMBERS OF JULIE KNOWN TO BE WITHIN THE LIMITS OF THE IMPROVEMENT ARE:  
 \*AMEREN ILLINOIS - (NORTH)  
 \*STATUS NETWORK, INC.  
 \*ATT / DISTRIBUTION  
 \*COMCAST (XFINITY)  
 \*GENESE TELEPHONE CO.  
 \*CITY OF PERU
3. THE CONTRACTOR'S ATTENTION IS DIRECTED TO THE PRESENCE OF DEPARTMENT-OWNED UNDERGROUND ELECTRICAL CABLE WITHIN THE LIMITS OF THE PROPOSED IMPROVEMENT. THE CONTRACTOR SHALL REQUEST THE ILLINOIS DEPARTMENT OF TRANSPORTATION IN OTTAWA (815-434-8506) TO LOCATE THE UNDERGROUND FACILITIES, PROVIDING A MINIMUM OF 72 HOURS NOTICE. THE DEPARTMENT IS NOT A MEMBER OF THE JOINT UTILITY LOCATING INFORMATION FOR EXCAVATORS (JULIE) SYSTEM.
4. ALL DAMAGE TO DEPARTMENT OWNED UNDERGROUND FACILITIES, CAUSED BY THE CONTRACTOR SHALL BE REPAIRED TO THE SATISFACTION OF THE ENGINEER AND AT NO EXPENSE TO THE DEPARTMENT. THIS SHALL INCLUDE ALL TEMPORARY REPAIRS REQUIRED TO KEEP THE FACILITY OPERATIONAL WHILE MATERIAL IS BEING OBTAINED TO MAKE PERMANENT REPAIRS, SPLICING OF ELECTRIC CABLE WILL NOT BE ALLOWED. ELECTRIC CABLE SHALL BE REPLACED FROM POLE TO POLE OR CONTROLLER.
5. ALL TRAFFIC CONTROL AND OTHER ADVISORY SIGNS NEEDED FOR CONSTRUCTION ARE TO BE FURNISHED BY THE CONTRACTOR IN ACCORDANCE WITH SECTION 701 OF THE STANDARD SPECIFICATIONS.
6. ALL TRAFFIC SIGNAL HEADS SHALL BE 12-INCH POLYCARBONATE
7. TRAFFIC SIGNAL HEADS SHALL BE PROPERLY COVERED PRIOR TO INTERSECTION TURN-ON OR AS DIRECTED BY THE ENGINEER. TAN COLORED TRAFFIC AND PEDESTRIAN SIGNAL REUSABLE COVERS SHALL BE USED TO COVER DARK/UN-ENERGIZED SIGNAL SECTIONS AND VISORS. COVERS SHALL BE MADE OF OUTDOOR FABRIC WITH URETHANE COATING FOR REPELLING WATER. HAVE ELASTIC FULLY SEWN AROUND THE COVER ENDS FOR A TIGHT FIT OVER THE VISOR, AND HAVE A MINIMUM OF TWO STRAPS WITH BUCKLES TO SECURE THE COVER TO THE BACKPLATE. A CENTER MESH STRIP ALLOWS VIEWING WITHOUT REMOVAL FOR SIGNAL STATUS TESTING PURPOSES. COVERS SHALL INCLUDE A MESSAGE INDICATING THE SIGNAL IS NOT IN SERVICE. THIS COST SHALL BE INCLUDED WITH THE COST OF THE ASSOCIATED TRAFFIC SIGNAL PAY ITEMS.
8. A 3/4" DIAMETER CONTINUOUS RODENT RESISTANT NYLON ROPE SHALL BE FURNISHED AND LEFT IN PLACE IN ALL CONDUITS BETWEEN HANDHOLES AND FOUNDATIONS OR CONTROLLER. THIS COST SHALL BE INCLUDED WITH THE COST OF CONDUIT PAY ITEM.
9. THE CONTRACTOR SHALL ARRANGE FOR A FACTORY OR SUPPLIER REPRESENTATIVE TO BE PRESENT AT THE INTERSECTION WHEN THE SIGNAL IS TURNED ON. COST TO BE INCLUDED WITH THE TRAFFIC SIGNAL CONTROLLER PAY ITEM.

**COMMITMENTS:**

NONE

10. ALL CONDUIT IN TRENCH SHALL BE P.V.C. ALL PUSHED CONDUIT MAY BE P.V.C. OR GALVANIZED STEEL. CONDUIT ATTACHED TO STRUCTURES SHALL BE GALVANIZED STEEL.
11. NO ADDITIONAL COMPENSATION WILL BE ALLOWED FOR PLACING CONDUIT AT A GREATER THAN 2' MINIMUM DEPTH TO AVOID OBSTACLES SUCH AS UNDERGROUND UTILITIES.
12. THE ELECTRICAL CONDUCTORS FOR ALL TRAFFIC SIGNAL HEADS SHALL BE SOLID, SOFT COPPER.
13. ALL THREADS OF BOLTS USED IN THE ASSEMBLY OF TRAFFIC SIGNAL COMPONENTS SHALL BE COATED WITH A NON-LEAD BASED ANTI-SEIZE COMPOUND, SIMILAR TO LEAD PLATE, PRIOR TO ASSEMBLY.
14. ALL HARDWARE SHALL BE TIGHTENED AND WELL SECURED, CABLES SHALL BE NEATLY WOUND IN HANDHOLES. CABLES SHALL BE NEATLY TRAINED IN THE CONTROLLER CABINET.
15. ALL TRAFFIC SIGNAL WIRING SHALL EXTEND FROM CONTROLLER TO SIGNAL. SPLICES IN JUNCTION BOXES WILL NOT BE ALLOWED.
16. ALL GROUNDING MATERIALS FOR CONCRETE FOUNDATIONS SHALL REFER TO SECTION 807 OF THE STANDARD SPECIFICATIONS.
17. ALL AREAS DISTURBED BY THE CONTRACTOR SHALL BE RESTORED WITH SEED OR SOD TO THE SATISFACTION OF THE ENGINEER. SEEDING OR SODDING SHALL NOT BE PERMITTED AT ANY TIME WHEN THE GROUND IS FROZEN, WET, OR IN AN UNTILLABLE CONDITION.
18. THE MAST ARM FOUNDATIONS SHALL BE LOCATED A MINIMUM OF 6' FROM THE FACE OF CURB OR A MINIMUM 10' FROM THE EDGE OF PAVEMENT TO THE FACE OF FOUNDATION WHERE THERE IS NO CURB, UNLESS OTHERWISE DIRECTED BY THE ENGINEER. IN CURB AREA, GET MORE THAN 6' IF POSSIBLE IF THE SIGNAL HEAD STILL LINES UP IN THE CENTER OF LANE.
19. ANY EXCAVATED MATERIAL, WHICH INCLUDES DIGGING OR GRADING OF ANY SOIL OR FILL MATERIAL, WITH THE EXCEPTION OF AGGREGATE FILLS, MUST BE INCORPORATED WITHIN THE IDOT RIGHT OF WAY DUE TO ENVIRONMENTAL DOCUMENTATION REQUIREMENTS.
20. THE LOCATION OF EXISTING UTILITIES AS SHOWN ON THE PLANS HAVE BEEN LOCATED AT THE TIME OF SURVEY, OR BASED ON AVAILABLE EXISTING INFORMATION. NO GUARANTEE IS IMPLIED THAT ALL UTILITIES HAVE BEEN LOCATED OR DEPICTED ON THE PLANS. THE CONTRACTOR SHALL BE RESPONSIBLE FOR VERIFYING THE EXACT LOCATION OF ALL UTILITIES. IT MAY BE NECESSARY TO HAND DIG TEST HOLES TO EXPOSE EXISTING UTILITIES AT SOME LOCATIONS.
21. ADDITIONAL CONSTRUCTION PROJECTS MAY BE UNDER CONTRACT WITHIN OR NEAR THE LIMITS OF THIS PROJECT WHEN IT IS IN FORCE. THE CONTRACTOR FOR THIS PROJECT SHALL COOPERATE WITH THE CONTRACTORS ON THE OTHER PROJECTS ACCORDING TO ARTICLE 105.08 OF THE STANDARD SPECIFICATIONS. CONTRACTS ANTICIPATED TO BE IN THE VICINITY OF THIS CONTRACT ARE: 66R21
22. ALL EXISTING TRAFFIC SIGNAL EQUIPMENT DESIGNATED FOR REMOVAL ON THE PLANS SHALL BE COMPLETELY REMOVED AND HAULED AWAY FROM THE PROJECT SITE BY THE CONTRACTOR. ALL EQUIPMENT AND MATERIALS REMOVED SHALL BECOME THE PROPERTY OF THE CONTRACTOR AND SHALL BE DISPOSED OF IN ACCORDANCE WITH ALL LOCAL, STATE, AND FEDERAL REGULATIONS.

STATE OF ILLINOIS  
 DEPARTMENT OF TRANSPORTATION  
 DISTRICT THREE  
 AS BUILT INFORMATION

\_\_\_\_\_  
 SUPERVISING CONSTRUCTION FIELD ENGINEER

\_\_\_\_\_  
 RESIDENT ENGINEER / TECHNICIAN

START & END DATES  
 OF CONSTRUCTION:

INSPECTORS:

\_\_\_\_\_  
 \_\_\_\_\_  
 \_\_\_\_\_

**STATE OF ILLINOIS  
 DEPARTMENT OF TRANSPORTATION**

USER NAME = beth.findleysmith	DESIGNED -	REVISED -
	DRAWN -	REVISED -
	CHECKED -	REVISED -
PLOT DATE = 3/19/2026	DATE -	REVISED -

SCALE: SHEET OF SHEETS STA. TO STA.

F.A. RTE.	SECTION	COUNTY	TOTAL SHEETS	SHEET NO.
*	(50-2) & (1)TS	LA SALLE	27	2
FAP 46 & FAU 6101 (IL 251)			CONTRACT NO. 66T15	
ILLINOIS FED. AID PROJECT				

MODEL: Default  
 FILE NAME: c:\pwwork\pwwork\illinois.gov\1166806\0366T15-shs-SQQ.dgn

CODE NO.	ITEM	UNIT	TOTAL QUANTITY	CONSTRUCTION CODE	
				NHPP 80% FED / 20% STATE	STBG 5K-<50K URBAN 80% FED / 20% STATE
				LASALLE COUNTY	LASALLE COUNTY
				TRAFFIC SIGNALS	TRAFFIC SIGNALS
				0021	0021
				URBAN	URBAN
66900200	NON-SPECIAL WASTE DISPOSAL	CU YD	6		6
66900530	SOIL DISPOSAL ANALYSIS	EACH	3	1	2
66901001	REGULATED SUBSTANCES PRE-CONSTRUCTION PLAN	L SJM	1	0.5	0.5
66901003	REGULATED SUBSTANCES FINAL CONSTRUCTION REPORT	L SJM	1	0.5	0.5
66901006	REGULATED SUBSTANCES MONITORING	CAL DA	1	0.5	0.5
67100100	MOBILIZATION	L SJM	1	0.33	0.67
70100825	TRAFFIC CONTROL AND PROTECTION, STANDARD 701456	L SJM	1	0.5	0.5
70102620	TRAFFIC CONTROL AND PROTECTION, STANDARD 701501	L SJM	1		1
70102635	TRAFFIC CONTROL AND PROTECTION, STANDARD 701701	L SJM	1	0.33	0.67
72000100	SIGN PANEL - TYPE 1	SQ FT	112.5	45	67.5
81028370	UNDERGROUND CONDUIT, PVC, 3" DIA.	FOOT	335	69	266
85000200	MAINTENANCE OF EXISTING TRAFFIC SIGNAL INSTALLATION	EACH	3	1	2
87301245	ELECTRIC CABLE IN CONDUIT, SIGNAL NO. 14 5C	FOOT	1761	499	1262
87301255	ELECTRIC CABLE IN CONDUIT, SIGNAL NO. 14 7C	FOOT	447	177	270

\*= SPECIALTY ITEM

USER NAME = beth.findleysmith	DESIGNED -	REVISED -
	DRAWN -	REVISED -
	CHECKED -	REVISED -
PLOT DATE = 3/26/2026	DATE -	REVISED -

**STATE OF ILLINOIS  
 DEPARTMENT OF TRANSPORTATION**

SUMMARY OF QUANTITIES			
SCALE:	SHEET	OF	SHEETS

F.A. RTE.	SECTION	COUNTY	TOTAL SHEETS	SHEET NO.
*	(50-2) & (1)TS	LASALLE	27	3
FAP 46 & FAU 6101 (IL 251)		CONTRACT NO. 66T15		
ILLINOIS FED. RD PROJECT				

CODE NO.	ITEM	UNIT	TOTAL QUANTITY	CONSTRUCTION CODE	
				NHPP 80% FED / 20% STATE	STBG 5K-<50K URBAN 80% FED / 20% STATE
				LASALLE COUNTY	LASALLE COUNTY
				TRAFFIC SIGNALS	TRAFFIC SIGNALS
				0021	0021
				URBAN	URBAN
87301900	ELECTRIC CABLE IN CONDUIT, EQUIPMENT GROUNDING CONDUCTOR, NO. 6 1C	FOOT	1761	499	1262
87502500	TRAFFIC SIGNAL POST, GALVANIZED STEEL 16 FT.	EACH	4	1	3
87700300	STEEL MAST ARM ASSEMBLY AND POLE, 52 FT.	EACH	1	1	
87700320	STEEL MAST ARM ASSEMBLY AND POLE, 55 FT.	EACH	1		1
87702900	STEEL COMBINATION MAST ARM ASSEMBLY AND POLE 34 FT.	EACH	1		1
87702910	STEEL COMBINATION MAST ARM ASSEMBLY AND POLE 36 FT.	EACH	1	1	
87703000	STEEL COMBINATION MAST ARM ASSEMBLY AND POLE 55 FT.	EACH	2		2
87800100	CONCRETE FOUNDATION, TYPE A	FOOT	12	3	9
87800415	CONCRETE FOUNDATION, TYPE E 36-INCH DIAMETER	FOOT	82	26	56
87900200	DRILL EXISTING HANDHOLE	EACH	10	3	7
88040070	SIGNAL HEAD, POLYCARBONATE, LED, 1-FACE, 3-SECTION, BRACKET MOUNTED	EACH	9	3	6
88040090	SIGNAL HEAD, POLYCARBONATE, LED, 1-FACE, 3-SECTION, MAST ARM MOUNTED	EACH	13	4	9
88040150	SIGNAL HEAD, POLYCARBONATE, LED, 1-FACE, 5-SECTION, BRACKET MOUNTED	EACH	2	1	1
88040160	SIGNAL HEAD, POLYCARBONATE, LED, 1-FACE, 5-SECTION, MAST ARM MOUNTED	EACH	2	1	1

MODEL: Default  
 FILE NAME: c:\paw\work\paw\illinois\gov\_ellizabeth.findleysmith@illinois.gov\166806\0366T15-est-SOD.dgn

USER NAME = beth.findleysmith	DESIGNED -	REVISED -
	DRAWN -	REVISED -
	CHECKED -	REVISED -
PLOT DATE = 3/26/2026	DATE -	REVISED -

**STATE OF ILLINOIS**  
**DEPARTMENT OF TRANSPORTATION**

SUMMARY OF QUANTITIES			
SCALE:	SHEET	OF SHEETS	STA. TO STA.

F.A. RTE.	SECTION	COUNTY	TOTAL SHEETS	SHEET NO.
*	(50-2) & (1)TS	LASALLE	27	4
FAP 46 & FAU 6101 (IL 251)		CONTRACT NO. 66T15		
ILLINOIS FED. AID PROJECT				

CODE NO.	ITEM	UNIT	TOTAL QUANTITY	CONSTRUCTION CODE	
				NHPP 80% FED / 20% STATE LASALLE COUNTY	STBG 5K-<50K URBAN 80% FED / 20% STATE LASALLE COUNTY
				TRAFFIC SIGNALS	TRAFFIC SIGNALS
				0021 URBAN	0021 URBAN
89502200	MODIFY EXISTING CONTROLLER	EACH	1		1
89502300	REMOVE ELECTRIC CABLE FROM CONDUIT	FOOT	1334	366	968
89502375	REMOVE EXISTING TRAFFIC SIGNAL EQUIPMENT	EACH	10	3	7
89502385	REMOVE EXISTING CONCRETE FOUNDATION	EACH	10	3	7
X0323898	CLOSED CIRCUIT TELEVISION DOME CAMERA	EACH	2	1	1
X8809005	LED SIGNAL FACE, LENS COVER	EACH	81	31	50
X8820014	TRAFFIC SIGNAL BACKPLATE, LOUVERED, FORMED PLASTIC, SPECIAL	EACH	26	9	17
X8891202	WIDE AREA VIDEO VEHICLE DETECTION SYSTEM COMPLETE	EACH	3	1	2

MODEL: Default  
 FILE NAME: c:\pwworkspace\illinois.gov\_e\elizabeth.findleysmith@illinois.gov\1166806\0386T15-shr-SOC.dgn

USER NAME = beth.findleysmith	DESIGNED -	REVISED -	<b>STATE OF ILLINOIS DEPARTMENT OF TRANSPORTATION</b>	<b>SUMMARY OF QUANTITIES</b>	F.A. RTE.	SECTION	COUNTY	TOTAL SHEETS	SHEET NO.	
	DRAWN -	REVISED -			*	(50-2) & (1)TS	LASALLE	27	5	
	CHECKED -	REVISED -			FAP 46 & FAU 6101 (IL 251)		CONTRACT NO. 66T15			
PLOT DATE = 3/26/2026	DATE -	REVISED -			SCALE:	SHEET OF SHEETS	STA.	TO STA.		
ILLINOIS   FED. AID PROJECT										

MAST ARM ASSEMBLY, SIGNAL POST, & FOUNDATION SCHEDULE (IL 251 & MAY/LASALLE RD AND IL 251 & WB I-80 INTERSECTIONS)													
LOCATION					TYPE	TS POST, GALVANIZED STEEL, 16 FT.	STEEL COMB MAST ARM ASSEMBLY AND POLE 34 FT. EA	STEEL MAST ARM ASSEMBLY AND POLE 55 FT. EA	STEEL COMB MAST ARM ASSEMBLY AND POLE 55 FT. EA	REM EX CONC FDN EA	CONC FDN, TYPE E 36" DIA FOOT	CONC FDN, TYPE A FOOT	DRILL EX HANDHOLE EACH
STA	STA STREET	QUAD	OFFSET	DIRECTION OF TRAFFIC									
IL 251 & MAY/LASALLE RD													
37+00	IL 251	NE	59' LT	NORTHBOUND	MAST ARM				1	1	15		1
39+00	IL 251	SW	68' RT	SOUTHBOUND	MAST ARM				1	1	15		1
37+85	MAY RD	NE	53' LT	EASTBOUND	SIGNAL POST	1				1		3	1
38+40	MAY RD	SE	58' LT	EASTBOUND	SIGNAL POST	1				1		3	1
38+30	MAY RD	SW	58' RT	WESTBOUND	SIGNAL POST	1				1		3	1
SUBTOTAL						3			2	5	30	9	5
IL 251 & WB I-80 RAMPS													
40+62	IL 251	NE	71' LT	NORTHBOUND	MAST ARM			1		1	15		1
42+09	IL 251	SW	66' RT	SOUTHBOUND	MAST ARM		1			1	11		1
SUBTOTAL							1	1		2	26		2
TOTAL						3	1	1	2	7	56	9	7

MAST ARM ASSEMBLY, SIGNAL POST, & FOUNDATION SCHEDULE (IL 251 & EB I-80 INTERSECTION)												
LOCATION					TYPE	TS POST, GALVANIZED STEEL, 16 FT.	STEEL COMB MAST ARM ASSEMBLY AND POLE 36 FT. EA	STEEL MAST ARM ASSEMBLY AND POLE 52 FT. EA	REM EX CONC FDN EA	CONC FDN, TYPE E 36" DIA FOOT	CONC FDN, TYPE A FOOT	DRILL EX HANDHOLE EACH
STA	STA STREET	QUAD	OFFSET	DIRECTION OF TRAFFIC								
IL 251 & EB I-80 RAMPS												
54+46	IL 251	NE	52' LT	NORTHBOUND	MAST ARM		1		1	11		1
55+57	IL 251	SW	78' RT	SOUTHBOUND	MAST ARM			1	1	15		1
55+35	IL 251	SOUTH MEDIAN	1' LT	SB/EB	SIGNAL POST	1			1		3	1
TOTAL						1	1	1	3	26	3	3

MISC ITEMS FOR MAST ARM CONTRACTS (IL 251 & MAY/LASALLE RD AND IL 251 & WB I-80 INTERSECTIONS)																
LOCATION	UNDGND CONDUIT, PVC, 3" DIA	ELEC CABLE IN CONDUIT, EQUIP GROUNDING CONDUCTOR NO 6 1C	ELECTRIC CABLE IN CONDUIT, SIG NO 14 5C	ELECTRIC CABLE IN CONDUIT, SIG NO 14 7C	SIG HD, POLYCARBONATE , LED, 1-FACE, 3- SEC, BRACKET MOUNTED	SIG HD, POLYCARBONATE, LED, 1-FACE, 3- SEC, MAST ARM MOUNTED	SIG HD, POLYCARBONATE, LED, 1-FACE, 5- SECTION, BRACKET	SIG HD, POLYCARBONATE, LED, 1-FACE, 5- SECTION, MAST ARM MOUNTED	TS BACKPLATE, LOUVERED, FORMED PLASTIC,	CLOSED CIRCUIT TELEVISION DOME CAMERA	WIDE AREA VIDEO VEHICLE DETECTION SYSTEM	LED SIGNAL FACE, LENS COVER	MAINTENANCE OF EX TS INST	REMOVE EX TS EQUIP	MODIFY EX CONTROLLER	REM ELEC CABLE FROM CONDUIT
	FOOT	FOOT	FOOT	FOOT	EA	EA	EA	EA	EA	EA	EA	EA	EA	EA	EA	EA
IL 251 & MAY / LASALLE RD																
NW QUAD	5	60	60													60
SW QUAD	48	163	163		1	3		4		1	12	1	2			124
NE QUAD	97	240	240		2	3		5			15		2			188
SE QUAD	15	208	208		2			2			6		1			192
SUBTOTAL																
	165	671	671		5	6		11		1	33	1	5			564
IL 251 & WB I-80																
SW QUAD	10	145	145	125		2	1	3	1		6		1			109
NE QUAD	67	133	133	120	1	1		3		1	11	1	1	1		97
SE QUAD		198	198													198
SUBTOTAL																
	77	476	476	245	1	3	1	6	1	1	17	1	2	1		404
TOTAL																
	266	1262	1262	270	6	9	1	17	1	2	50	2	7	1		968

\*NOTE: The CCTV Dome Camera at the IL 251 & WB I-80 intersection will also detect traffic at the IL 251 & May / LaSalle Rd intersection.

MISC ITEMS FOR MAST ARM CONTRACTS (IL 251 & EB I-80 INTERSECTION)															
LOCATION	UNDGND CONDUIT, PVC, 3" DIA	ELEC CABLE IN CONDUIT, EQUIP GROUNDING CONDUCTOR NO 6 1C	ELEC CABLE IN CONDUIT, SIG NO 14 5C	ELEC CABLE IN CONDUIT, SIG NO 14 7C	SIG HD, POLYCARBONATE , LED, 1-FACE, 3- SEC, BRACKET MOUNTED	SIG HD, POLYCARBONATE, LED, 1-FACE, 3- SEC, MAST ARM MOUNTED	SIG HD, POLYCARBONATE, LED, 1-FACE, 5- SECTION, BRACKET MOUNTED	SIG HD, POLYCARBONATE, LED, 1-FACE, 5- SECTION, MAST ARM MOUNTED	TS BACKPLATE, LOUVERED, FORMED PLASTIC, SPECIAL	CLOSED CIRCUIT TELEVISION DOME CAMERA	WIDE AREA VIDEO VEHICLE DETECTION SYSTEM COMPLETE	LED SIGNAL FACE, LENS COVER	MAINTENANCE OF EX TS INST	REMOVE EX TS EQUIP	REM ELEC CABLE FROM CONDUIT
	FOOT	FOOT	FOOT	FOOT	EA	EA	EA	EA	EA	EA	EA	EA	EA	EA	EA
IL 251 & EB I-80															
SW QUAD	13	174	174	161	1	2		1	4		14		1	1	138
NE QUAD	30	264	264		1	2		3		1	9	1	1	1	228
SOUTH MEDIAN	20	16	16		1		1	2			8			1	
TOTAL															
	69	499	499	177	3	4	1	1	9	1	31	1	1	3	366

USER NAME = Beth.FindleySmith	DESIGNED -	REVISED -
	DRAWN -	REVISED -
	CHECKED -	REVISED -
PLOT DATE = 3/24/2026	DATE -	REVISED -

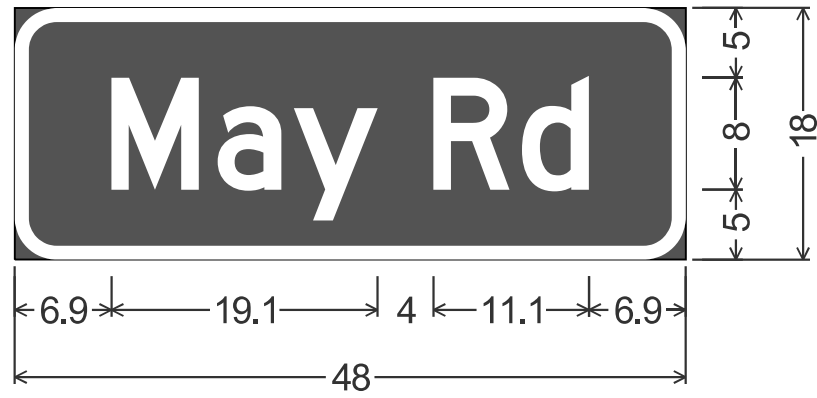
STATE OF ILLINOIS  
DEPARTMENT OF TRANSPORTATION

SCHEDULE OF QUANTITIES

SCALE: SHEET OF SHEETS STA. TO STA.

F.A. RTE.	SECTION	COUNTY	TOTAL SHEETS	SHEET NO.
*	(50-2) & (1)TS	LASALLE	27	6
	FAP 46 & FAU 6101 (IL 251)	CONTRACT NO. 66T15		
		ILLINOIS	FED. AID PROJECT	

MODEL: Default  
FILE NAME: c:\pwworking\illinois.gov\_e\lrasalle\findley\smith\illinois\gov\1166806\0368T15-shh-schedules.dgn



3.0" Radius, 1.0" Border, White on Green;  
 "May Rd", D 2K;

Table of widths and spaces

6.9	M	6.3	1.3	a	4.6	0.9	y	6.0
4.0	R	5.4	0.9	d	4.8	6.9		

SIGN SCHEDULE						
(IL 251 & MAY/LASALLE RD AND IL 251 & WB I-80 INTERSECTIONS)						
LOCATION	MAST ARM / SIGNAL POST	SIGN DIRECTION OF TRAFFIC	SIGN TEXT	SIGN CODE	SIZE	SIGN PANEL TYPE 1
					IN	SQ FT
IL 251 & MAYRD						
NE QUAD	MAST ARM	NB	MAY RD	N/A	48 X 18	6
			LT ON GRN ARW ONLY	R10-5	30 X 36	8
SW QUAD	MAST ARM	SB	MAY RD	N/A	48 X 18	6
			LT ON GRN ARW ONLY	R10-5	30 X 36	8
			SOUTH ILLINOIS 251	M3-3	24 X 12	2
			LEFT ARROW	M1-100	30 X 24	5
NE CONC ISLAND	SIGNAL POST	EB	ONE WAY	R6-1	48 X 18	6
		WB	STOP HERE ON RED	R10-6A	24 X 30	5
SW CONC ISLAND	SIGNAL POST	WB	ONE WAY	R6-1	48 X 18	6
		EB	ONE WAY	R6-1	48 X 18	6
SUBTOTAL						60
IL 251 & I-80 WB RAMPS						
NE QUAD	MAST ARM	NB	LT TURN YLD ON GRN	R10-12	30 X 36	7.5
SUBTOTAL						7.5
TOTAL						67.5

NOTE: ALL MAST ARM SIGNS TO BE TYPE ZZ SHEETING. ALL OTHER SIGNS TO BE TYPE AP SHEETING.

SIGN SCHEDULE						
(IL 251 & EB I-80 INTERSECTION)						
LOCATION	MAST ARM / SIGNAL POST	SIGN DIRECTION OF TRAFFIC	SIGN TEXT	SIGN CODE	SIZE	SIGN PANEL TYPE 1
					IN	SQ FT
IL 251 & I-80 EB RAMPS						
NE QUAD	MAST ARM	NB	ONE WAY	R6-1	48 X 18	6
SW QUAD	MAST ARM	SB	LT TURN YLD ON GRN	R10-12	30 X 36	7.5
		SB	LT TURN YLD ON GRN	R10-12	30 X 36	7.5
SOUTH MEDIAN	SIGNAL POST	NB	NO U TURN	R3-4	36 X 36	9
		NB	NO LEFT TURN	R3-2	36 X 36	9
		SB	ONE WAY	R6-1	48 X 18	6
TOTAL						45

NOTE: ALL MAST ARM SIGNS TO BE TYPE ZZ SHEETING. ALL OTHER SIGNS TO BE TYPE AP SHEETING.

MODEL: D:\efull... FILE NAME: c:\paw\work\paw\illinois.gov\_elizabeth.findleysmith@illinois.gov\1166808\266T15-shh-schedules.dgn

USER NAME = beth.findleysmith	DESIGNED -	REVISED -	<b>STATE OF ILLINOIS DEPARTMENT OF TRANSPORTATION</b>	<b>SCHEDULE OF QUANTITIES</b>			F.A. RTE.	SECTION	COUNTY	TOTAL SHEETS	SHEET NO.
DRAWN -	REVISED -	*					(50-2) & (1)TS	LASALLE	27	7	
CHECKED -	REVISED -	CONTRACT NO. 66T15									
PLOT DATE = 3/26/2026	DATE -	REVISED -		SCALE:	SHEET	OF	SHEETS	STA.	TO	STA.	ILLINOIS FED. AID PROJECT

SEQUENCE OF OPERATIONS

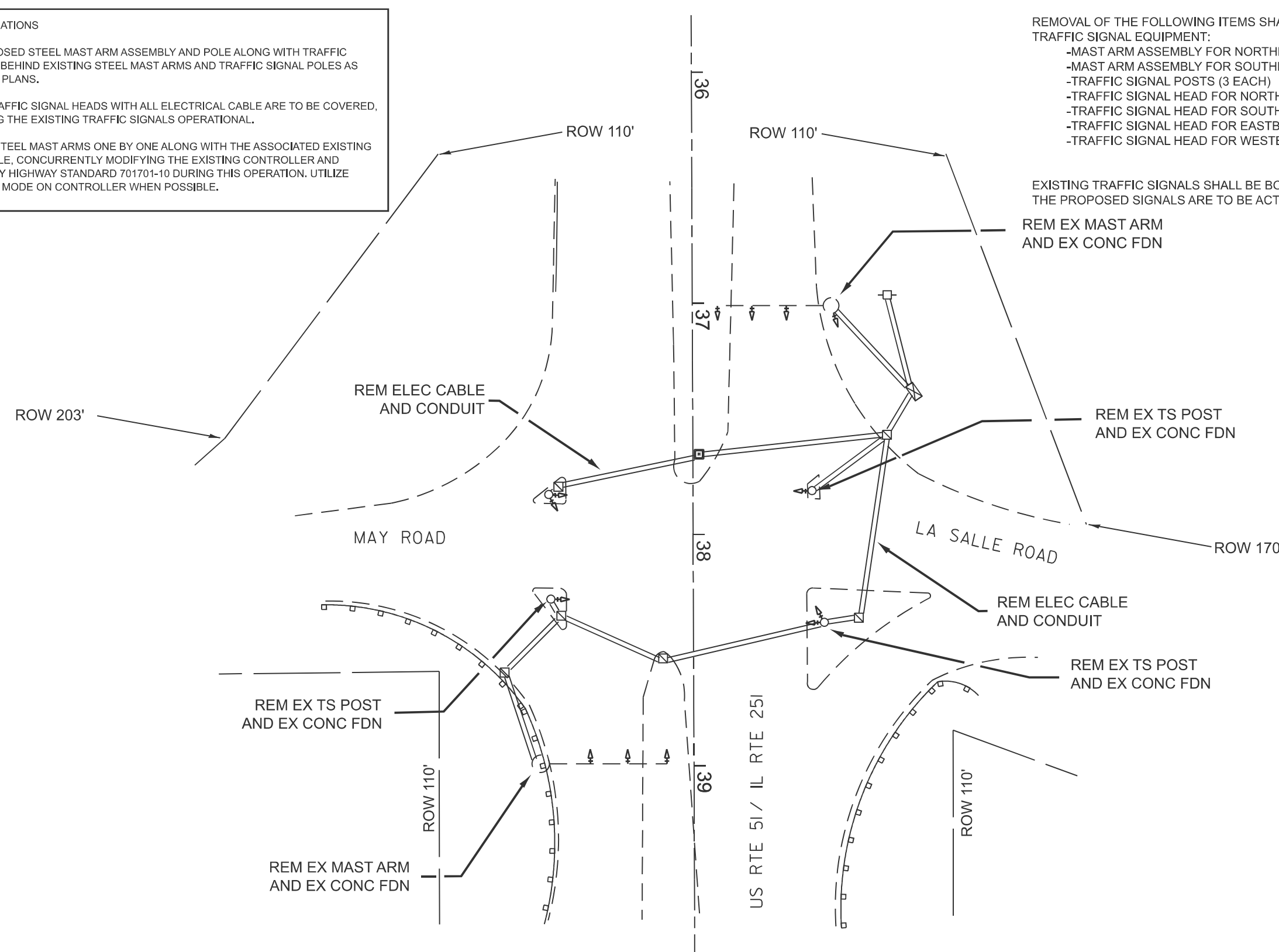
1. INSTALL PROPOSED STEEL MAST ARM ASSEMBLY AND POLE ALONG WITH TRAFFIC SIGNAL POLES BEHIND EXISTING STEEL MAST ARMS AND TRAFFIC SIGNAL POLES AS SHOWN IN THE PLANS.
2. PROPOSED TRAFFIC SIGNAL HEADS WITH ALL ELECTRICAL CABLE ARE TO BE COVERED, WHILE KEEPING THE EXISTING TRAFFIC SIGNALS OPERATIONAL.
3. REMOVE THE STEEL MAST ARMS ONE BY ONE ALONG WITH THE ASSOCIATED EXISTING ELECTRIC CABLE, CONCURRENTLY MODIFYING THE EXISTING CONTROLLER AND CABINET. APPLY HIGHWAY STANDARD 701701-10 DURING THIS OPERATION. UTILIZE FLASHING RED MODE ON CONTROLLER WHEN POSSIBLE.

CONSTRUCTION NOTES:

REMOVAL OF THE FOLLOWING ITEMS SHALL BE PAID FOR AS REMOVE EXISTING TRAFFIC SIGNAL EQUIPMENT:

- MAST ARM ASSEMBLY FOR NORTHBOUND TRAFFIC (1 EACH)
- MAST ARM ASSEMBLY FOR SOUTHBOUND TRAFFIC (1 EACH)
- TRAFFIC SIGNAL POSTS (3 EACH)
- TRAFFIC SIGNAL HEAD FOR NORTHBOUND TRAFFIC (4 EACH)
- TRAFFIC SIGNAL HEAD FOR SOUTHBOUND TRAFFIC (4 EACH)
- TRAFFIC SIGNAL HEAD FOR EASTBOUND TRAFFIC (2 EACH)
- TRAFFIC SIGNAL HEAD FOR WESTBOUND TRAFFIC (1 EACH)

EXISTING TRAFFIC SIGNALS SHALL BE BOTH VISABLE AND OPERATIONAL UNTIL THE PROPOSED SIGNALS ARE TO BE ACTIVATED.



TRAFFIC SIGNAL PLAN LEGEND

	CONTROLLER
	STEEL MAST ARM
	EX SIGNAL HEAD W/BACKPLATE
	EX UNDERGROUND CONDUIT
	HANDHOLE
	DOUBLE HANDHOLE
	SIGNAL POST
	PED PUSH BUTTON DETECTOR
	POWER POLE SERVICE
	HEAVY DUTY HANDHOLE

MODEL: Default  
FILE NAME: c:\pwworkspace\illinois.gov\1166806\0366T15-shit-traffic-signal-plan.dgn

USER NAME =	DESIGNED -	REVISED -
	DRAWN -	REVISED -
	CHECKED -	REVISED -
PLOT DATE = 3/26/2026	DATE -	REVISED -

STATE OF ILLINOIS  
DEPARTMENT OF TRANSPORTATION

TRAFFIC SIGNAL REMOVAL PLAN  
IL 251 & MAY / LASALLE RD

SCALE: SHEET OF SHEETS STA. TO STA.

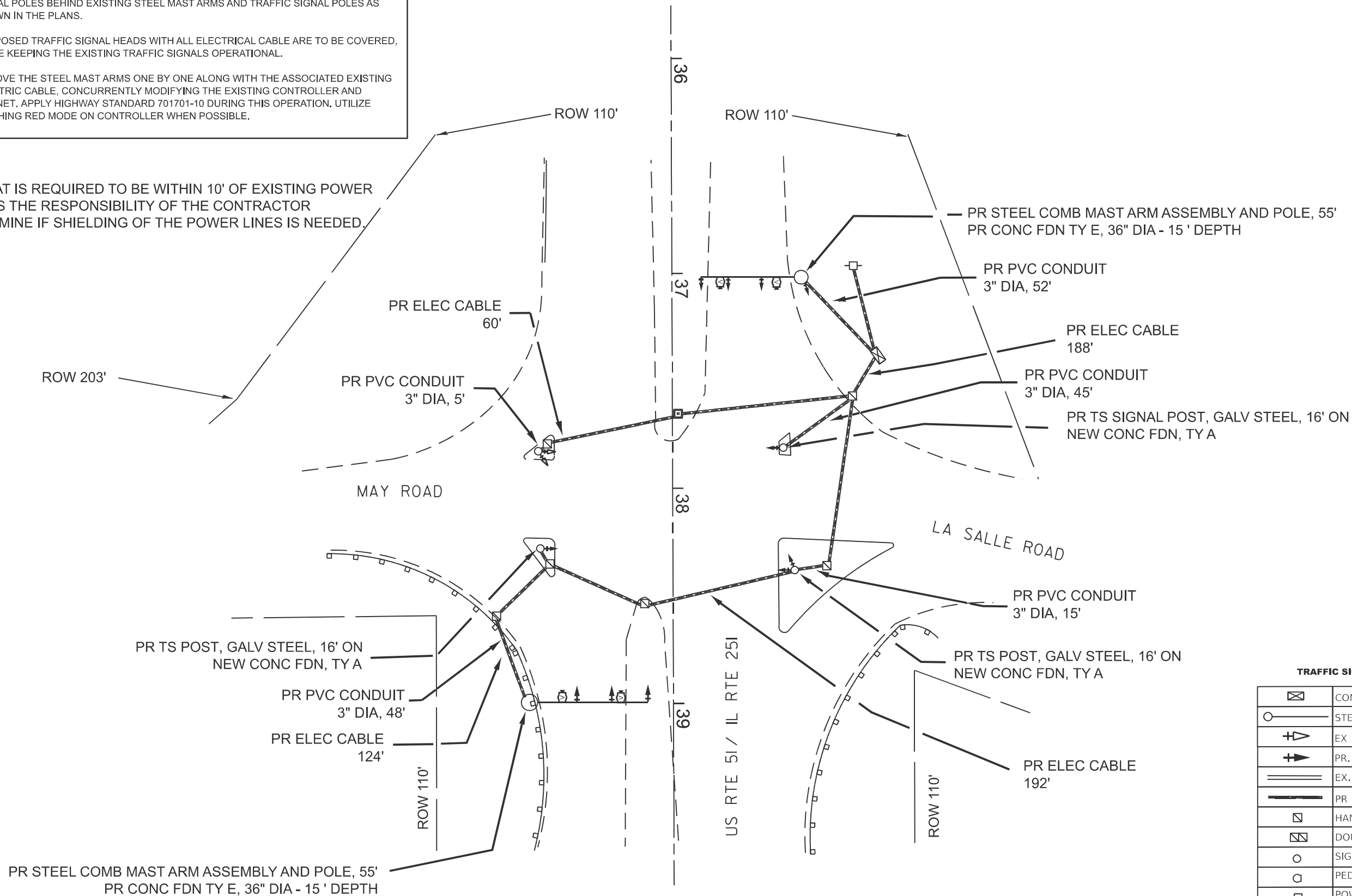
F.A. RTE.	SECTION	COUNTY	TOTAL SHEETS	SHEET NO.
	(50-2) & (1)TS	LASALLE	27	8
FAP 46 & FAU 6101 (IL 251)		CONTRACT NO. 66T15		
ILLINOIS FED. AID PROJECT				

SEQUENCE OF OPERATIONS

1. INSTALL PROPOSED STEEL MAST ARM ASSEMBLY AND POLE ALONG WITH TRAFFIC SIGNAL POLES BEHIND EXISTING STEEL MAST ARMS AND TRAFFIC SIGNAL POLES AS SHOWN IN THE PLANS.
2. PROPOSED TRAFFIC SIGNAL HEADS WITH ALL ELECTRICAL CABLE ARE TO BE COVERED, WHILE KEEPING THE EXISTING TRAFFIC SIGNALS OPERATIONAL.
3. REMOVE THE STEEL MAST ARMS ONE BY ONE ALONG WITH THE ASSOCIATED EXISTING ELECTRIC CABLE, CONCURRENTLY MODIFYING THE EXISTING CONTROLLER AND CABINET. APPLY HIGHWAY STANDARD 701701-10 DURING THIS OPERATION. UTILIZE FLASHING RED MODE ON CONTROLLER WHEN POSSIBLE.

NOTES:

WORK THAT IS REQUIRED TO BE WITHIN 10' OF EXISTING POWER LINES. IT IS THE RESPONSIBILITY OF THE CONTRACTOR TO DETERMINE IF SHIELDING OF THE POWER LINES IS NEEDED.



**TRAFFIC SIGNAL PLAN LEGEND**

	CONTROLLER
	STEEL MAST ARM
	EX SIGNAL HEAD W/BACKPLATE
	PR. SIGNAL HEAD W/BACKPLATE
	EX. UNDERGROUND CONDUIT
	PR UNDERGROUND CABLE
	HANDHOLE
	DOUBLE HANDHOLE
	SIGNAL POST
	PED PUSH BUTTON DETECTOR
	POWER POLE SERVICE

MODEL: Default  
FILE NAME: c:\pwworkspace\illinois.gov\altzabeth.findervertin\illinois.gov\116680610365T15-sht-traffic-signal-plan.dgn

USER NAME =	DESIGNED -	REVISED -
	DRAWN -	REVISED -
	CHECKED -	REVISED -
PLOT DATE = 3/26/2026	DATE -	REVISED -

STATE OF ILLINOIS  
DEPARTMENT OF TRANSPORTATION

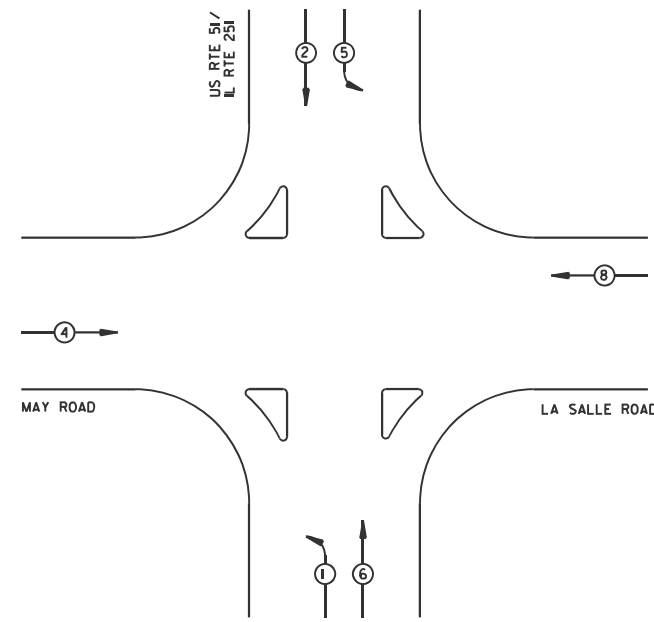
PROPOSED TRAFFIC SIGNAL PLAN  
IL 251 & MAY / LASALLE RD

SCALE: SHEET OF SHEETS STA. TO STA.

F.A. RTE.	SECTION	COUNTY	TOTAL SHEETS	SHEET NO.
	(50-2) & (1)TS	LASALLE	27	9
FAP 46 & FAU 6101 (IL 251)		CONTRACT NO. 66T15		
ILLINOIS FED. AID PROJECT				

**EXISTING AND PROPOSED PHASE DESIGNATION DIAGRAM**

NAME OF INTERSECTION: IL 251 & MAY / LASALLE RD

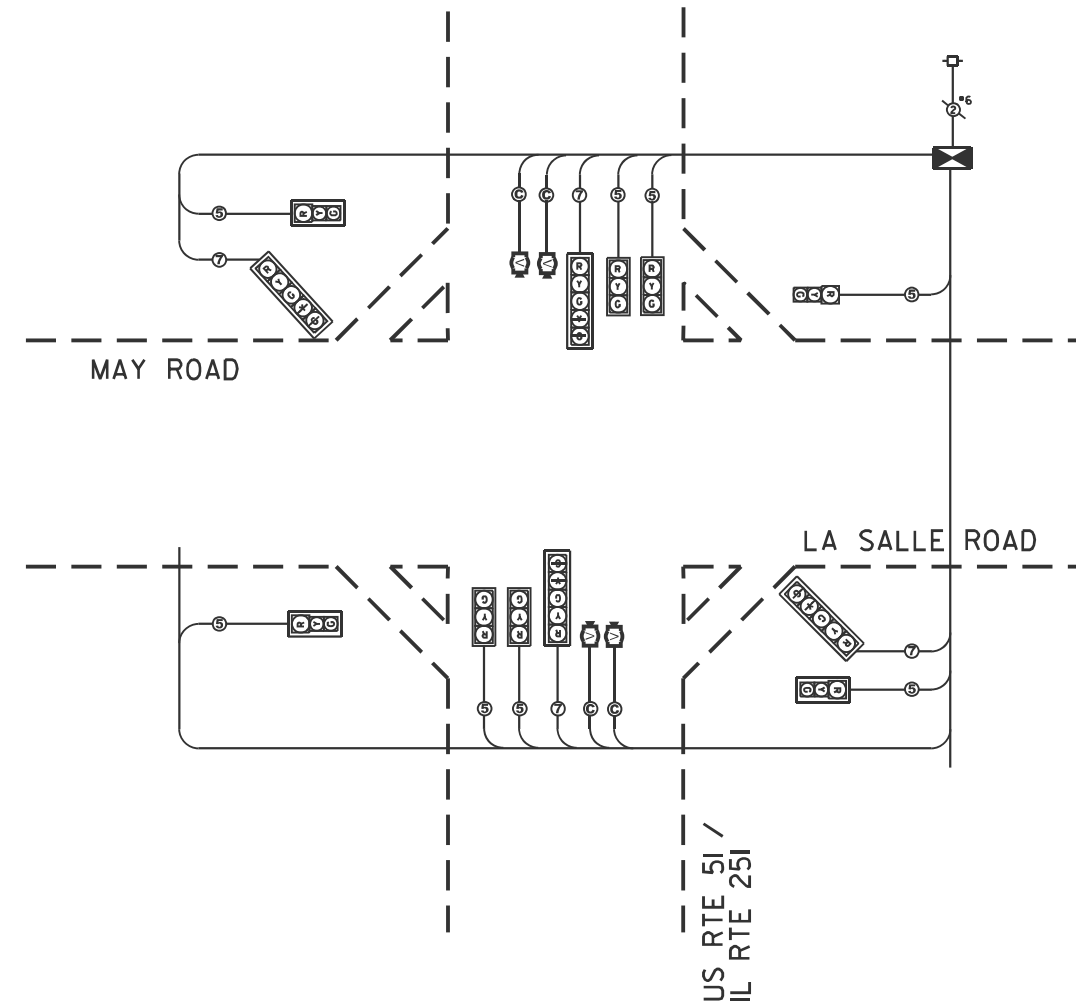


**EXISTING PHASE DESIGNATION DIAGRAM**

**LEGEND**

←○ VEHICULAR MOVEMENT  
NUMBER REFERS TO ASSOCIATED PHASE

NOT TO SCALE



**PROPOSED CABLE PLAN**  
NOT TO SCALE

**CABLE PLAN LEGEND**

	8" TRAFFIC SIGNAL SECTION
	12" TRAFFIC SIGNAL SECTION
	12" PEDESTRIAN SIGNAL SECTION
	EX CONTROLLER CABINET
	VEHICLE DETECTOR, INDUCTION LOOP
	PUSHBUTTON DETECTOR
	DENOTES NUMBER OF CONDUCTORS
	INDICATES EX CABLE
	SIGNAL FACE WITH BACKPLATE "P" INDICATES OPTICAL PROGRAMMING
	VIDEO DETECTION SYSTEM
	SERVICE INSTALLATION EXISTING
	DUAL-INDICATION SIGNAL SECTION
	ELECTRICAL CABLE IN CONDUIT



MODEL: Default  
FILE NAME: c:\pw\_work\lowid\illinois.gov\_elizabeth.findleysmith@illinois.gov\1166806\0366T15-sh-cable-plan & phase designation.dgn

USER NAME = both.findleysmith	DESIGNED -	REVISED -
	DRAWN -	REVISED -
	CHECKED -	REVISED -
PLOT DATE = 3/25/2026	DATE -	REVISED -

**STATE OF ILLINOIS**  
**DEPARTMENT OF TRANSPORTATION**

**CABLE PLAN & PHASE DESIGNATION DIAGRAM**  
**IL 251 & MAY/LASALLE RD**

SCALE: SHEET OF SHEETS STA. TO STA.

F.A. RTE.	SECTION	COUNTY	TOTAL SHEETS	SHEET NO.
	(50-2) & (1)TS	LASALLE	27	10
FAP 46 & FAU 6101 (IL 251)		CONTRACT NO. 66T15		
ILLINOIS FED. AID PROJECT				

SEQUENCE OF OPERATIONS

1. INSTALL PROPOSED STEEL MAST ARM ASSEMBLY AND POLE ALONG WITH TRAFFIC SIGNAL POLES BEHIND EXISTING STEEL MAST ARMS AND TRAFFIC SIGNAL POLES AS SHOWN IN THE PLANS.
2. PROPOSED TRAFFIC SIGNAL HEADS WITH ALL ELECTRICAL CABLE ARE TO BE COVERED, WHILE KEEPING THE EXISTING TRAFFIC SIGNALS OPERATIONAL.
3. REMOVE THE STEEL MAST ARMS ONE BY ONE ALONG WITH THE ASSOCIATED EXISTING ELECTRIC CABLE, CONCURRENTLY MODIFYING THE EXISTING CONTROLLER AND CABINET. APPLY HIGHWAY STANDARD 701701-10 DURING THIS OPERATION. UTILIZE FLASHING RED MODE ON CONTROLLER WHEN POSSIBLE.

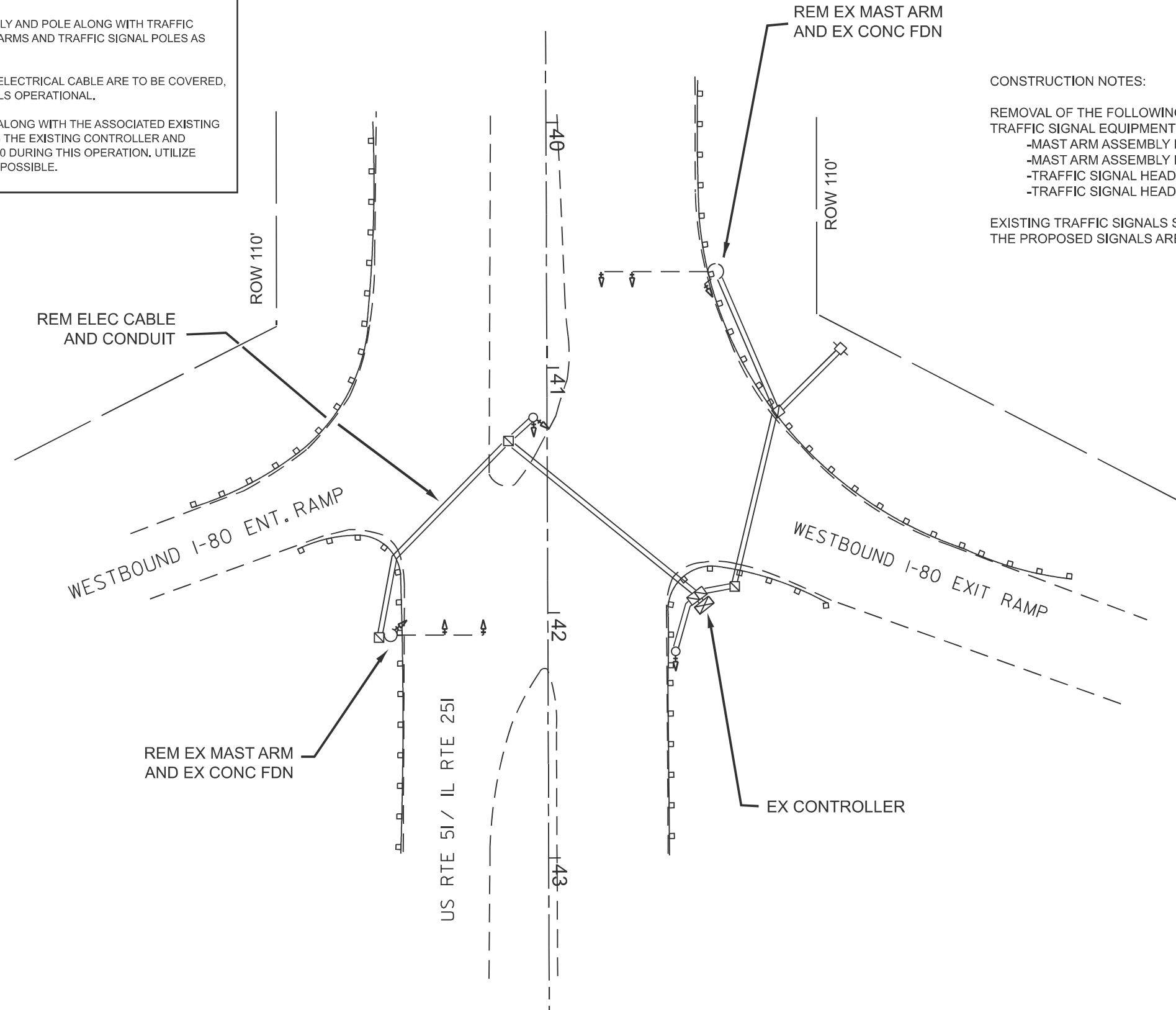


CONSTRUCTION NOTES:

REMOVAL OF THE FOLLOWING ITEMS SHALL BE PAID FOR AS REMOVE EXISTING TRAFFIC SIGNAL EQUIPMENT:

- MAST ARM ASSEMBLY FOR NORTHBOUND TRAFFIC (1 EACH)
- MAST ARM ASSEMBLY FOR SOUTHBOUND TRAFFIC (1 EACH)
- TRAFFIC SIGNAL HEAD FOR NORTHBOUND TRAFFIC (3 EACH)
- TRAFFIC SIGNAL HEAD FOR SOUTHBOUND TRAFFIC (3 EACH)

EXISTING TRAFFIC SIGNALS SHALL BE BOTH VISABLE AND OPERATIONAL UNTIL THE PROPOSED SIGNALS ARE TO BE ACTIVATED.



TRAFFIC SIGNAL PLAN LEGEND

	CONTROLLER
	STEEL MAST ARM
	SIGNAL HEAD W/ BACKPLATE
	EX UNDERGROUND CONDUIT
	HANDHOLE
	DOUBLE HANDHOLE
	SIGNAL POST
	PED PUSH BUTTON DETECTOR
	POWER POLE SERVICE

MODEL: Default  
FILE NAME: c:\pwwork\low\dot\illinois.gov\elizabeth.fln\dev\smith\illinois.gov\41166806\366T15-shl-traffic-signal-plan.dgn

USER NAME =	DESIGNED -	REVISED -
	DRAWN -	REVISED -
	CHECKED -	REVISED -
PLOT DATE = 3/26/2026	DATE -	REVISED -

STATE OF ILLINOIS  
DEPARTMENT OF TRANSPORTATION

TRAFFIC SIGNAL REMOVAL PLAN  
IL 251 & WESTBOUND I-80 RAMPS

SCALE: SHEET OF SHEETS STA. TO STA.

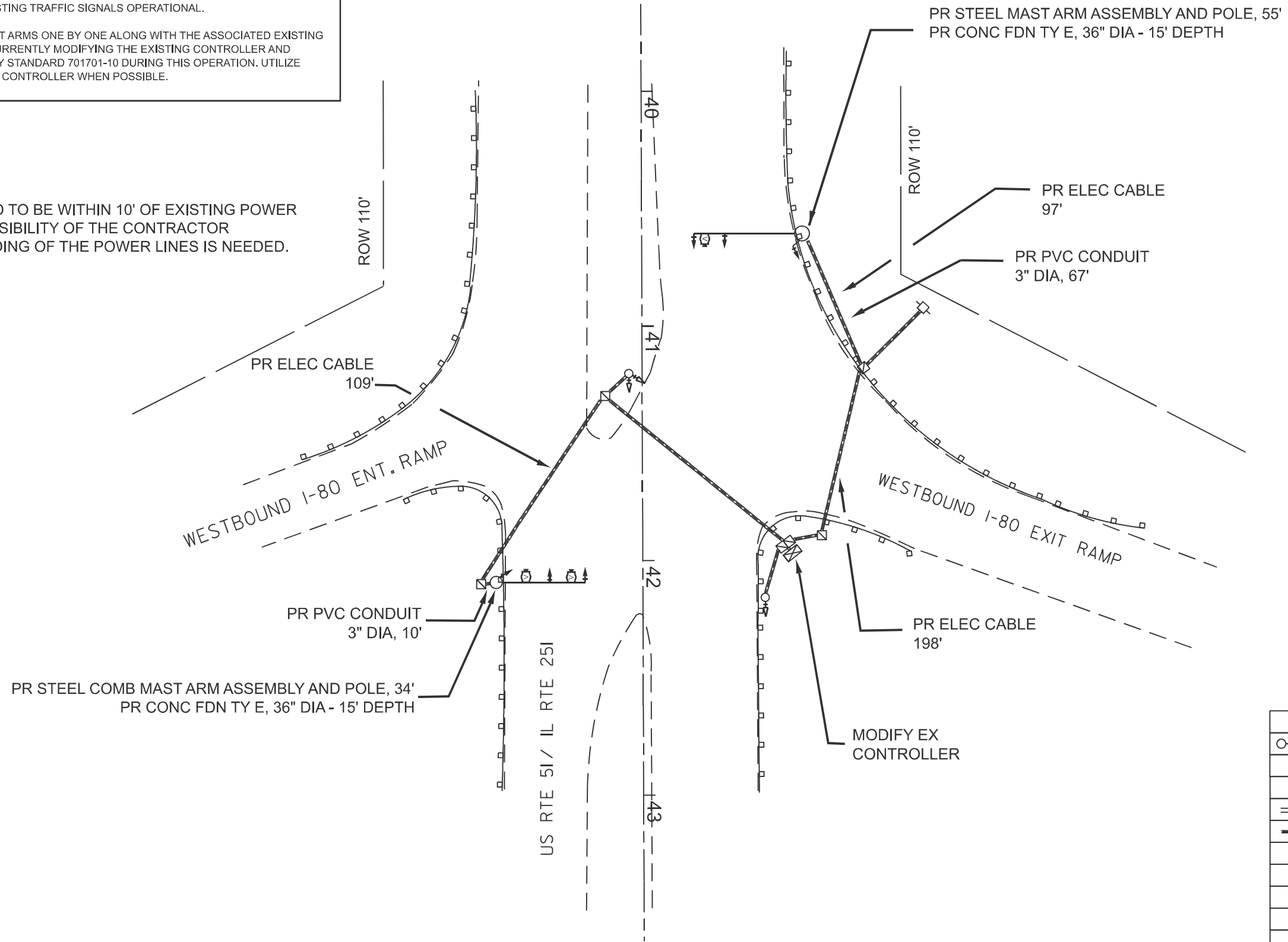
F.A. RTE.	SECTION	COUNTY	TOTAL SHEETS	SHEET NO.
*	(50-2) & (1)TS	LASALLE	27	11
FAP 46 & FAU 6101 (IL 251)		CONTRACT NO. 66T15		
ILLINOIS FED. AID PROJECT				

SEQUENCE OF OPERATIONS

1. INSTALL PROPOSED STEEL MAST ARM ASSEMBLY AND POLE ALONG WITH TRAFFIC SIGNAL POLES BEHIND EXISTING STEEL MAST ARMS AND TRAFFIC SIGNAL POLES AS SHOWN IN THE PLANS.
2. PROPOSED TRAFFIC SIGNAL HEADS WITH ALL ELECTRICAL CABLE ARE TO BE COVERED, WHILE KEEPING THE EXISTING TRAFFIC SIGNALS OPERATIONAL.
3. REMOVE THE STEEL MAST ARMS ONE BY ONE ALONG WITH THE ASSOCIATED EXISTING ELECTRIC CABLE, CONCURRENTLY MODIFYING THE EXISTING CONTROLLER AND CABINET. APPLY HIGHWAY STANDARD 701701-10 DURING THIS OPERATION. UTILIZE FLASHING RED MODE ON CONTROLLER WHEN POSSIBLE.

NOTES:

WORK THAT IS REQUIRED TO BE WITHIN 10' OF EXISTING POWER LINES. IT IS THE RESPONSIBILITY OF THE CONTRACTOR TO DETERMINE IF SHIELDING OF THE POWER LINES IS NEEDED.



TRAFFIC SIGNAL PLAN LEGEND

	CONTROLLER
	STEEL MAST ARM
	EX SIGNAL HEAD W/BACKPLATE
	PR. SIGNAL HEAD W/BACKPLATE
	EX. UNDERGROUND CONDUIT
	PR UNDERGROUND CABLE
	HANDHOLE
	DOUBLE HANDHOLE
	SIGNAL POST
	PED PUSH BUTTON DETECTOR
	POWER POLE SERVICE

MODEL: Default  
FILE NAME: c:\pwwork\work\illinois.gov\_ellizabeth.mcdole\smith@illinois.gov\1166806\0366715-shr-traffic\_signal\_plan.dgn

USER NAME =	DESIGNED -	REVISED -
	DRAWN -	REVISED -
	CHECKED -	REVISED -
PLOT DATE = 3/26/2026	DATE -	REVISED -

STATE OF ILLINOIS  
DEPARTMENT OF TRANSPORTATION

PROPOSED TRAFFIC SIGNAL PLAN  
IL 251 & WESTBOUND I-80 RAMPS

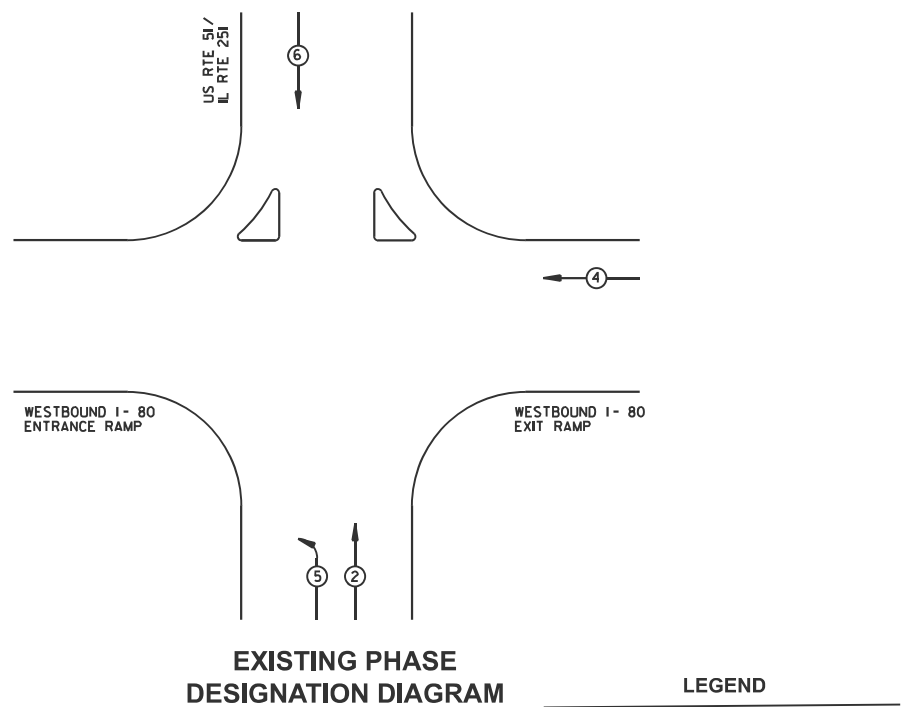
SCALE: SHEET OF SHEETS STA. TO STA.

F.A. RTE.	SECTION	COUNTY	TOTAL SHEETS	SHEET NO.
-	(50-2) & (1)TS	LASALLE	27	12
FAP 46 & FAU 6101 (IL 251)		CONTRACT NO. 66T15		
ILLINOIS FED. AID PROJECT				

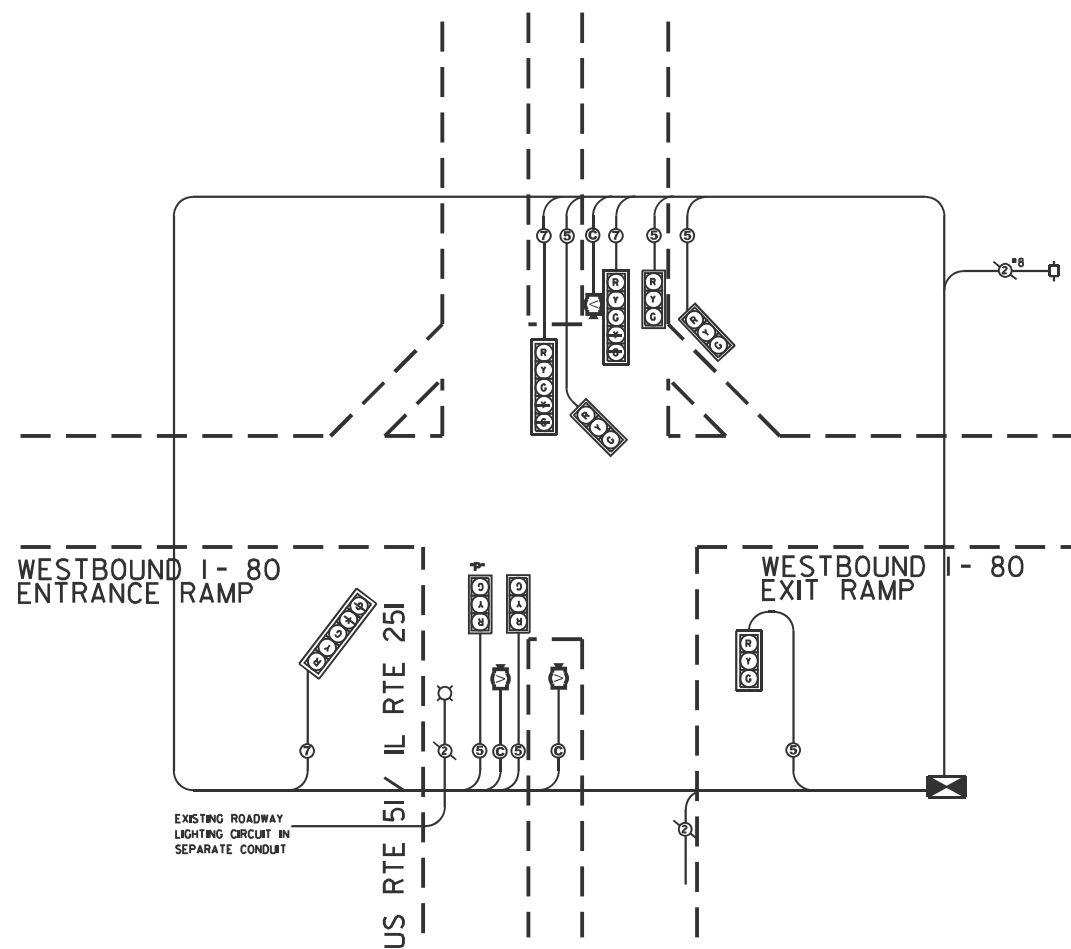


**EXISTING AND PROPOSED PHASE DESIGNATION DIAGRAM**

NAME OF INTERSECTION: IL 251 & WESTBOUND I-80 RAMP



NOT TO SCALE



**PROPOSED CABLE PLAN**  
NOT TO SCALE

**CABLE PLAN LEGEND**

	8" TRAFFIC SIGNAL SECTION
	12" TRAFFIC SIGNAL SECTION
	12" PEDESTRIAN SIGNAL SECTION
	EX CONTROLLER CABINET
	VEHICLE DETECTOR, INDUCTION LOOP
	PUSHBUTTON DETECTOR
	DENOTES NUMBER OF CONDUCTORS
	INDICATES EX CABLE
	SIGNAL FACE WITH BACKPLATE "P" INDICATES OPTICAL PROGRAMMING
	VIDEO DETECTION SYSTEM
	SERVICE INSTALLATION EXISTING
	DUAL-INDICATION SIGNAL SECTION
	ELECTRICAL CABLE IN CONDUIT

MODEL: Default  
 FILE NAME: c:\pwworkspace\tdot\illinois.gov\elizabeth.findleysmith@illinois.gov\1166906\0366T15-shl-cable plan & phase designation.dgn

USER NAME = beth.findleysmith	DESIGNED -	REVISED -
	DRAWN -	REVISED -
	CHECKED -	REVISED -
PLOT DATE = 3/25/2026	DATE -	REVISED -

**STATE OF ILLINOIS**  
**DEPARTMENT OF TRANSPORTATION**

**CABLE PLAN & PHASE DESIGNATION DIAGRAM**  
**IL 251 & WESTBOUND I-80 RAMP**

SCALE: SHEET OF SHEETS STA. TO STA.

F.A. RTE.	SECTION	COUNTY	TOTAL SHEETS	SHEET NO.
-	(50-2) & (1)TS	LASALLE	27	13
FAP 46 & FAU 6101 (IL 251)			CONTRACT NO. 66T15	
ILLINOIS FED. AID PROJECT				

SEQUENCE OF OPERATIONS

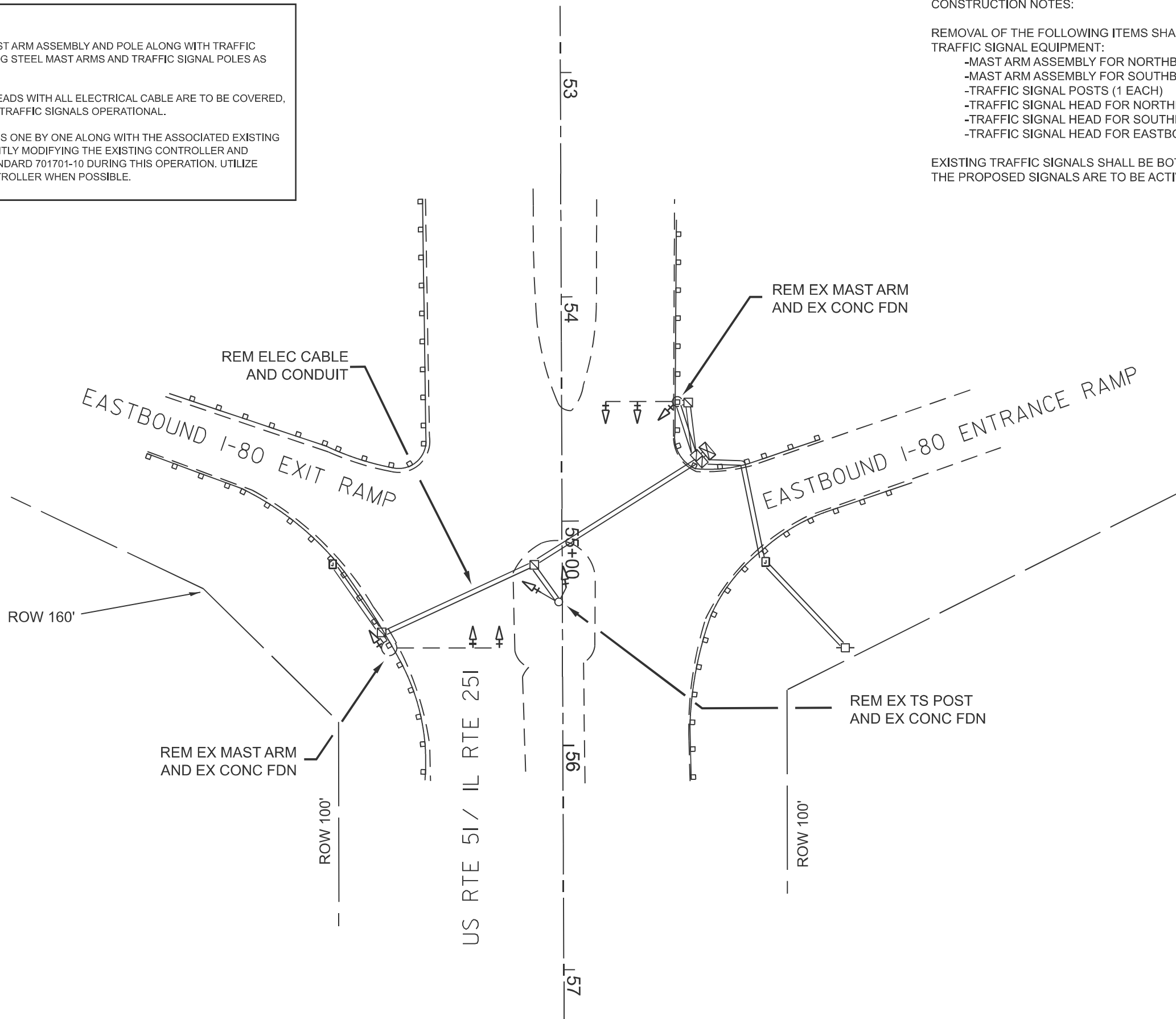
1. INSTALL PROPOSED STEEL MAST ARM ASSEMBLY AND POLE ALONG WITH TRAFFIC SIGNAL POLES BEHIND EXISTING STEEL MAST ARMS AND TRAFFIC SIGNAL POLES AS SHOWN IN THE PLANS.
2. PROPOSED TRAFFIC SIGNAL HEADS WITH ALL ELECTRICAL CABLE ARE TO BE COVERED, WHILE KEEPING THE EXISTING TRAFFIC SIGNALS OPERATIONAL.
3. REMOVE THE STEEL MAST ARMS ONE BY ONE ALONG WITH THE ASSOCIATED EXISTING ELECTRIC CABLE, CONCURRENTLY MODIFYING THE EXISTING CONTROLLER AND CABINET. APPLY HIGHWAY STANDARD 701701-10 DURING THIS OPERATION. UTILIZE FLASHING RED MODE ON CONTROLLER WHEN POSSIBLE.

CONSTRUCTION NOTES:

REMOVAL OF THE FOLLOWING ITEMS SHALL BE PAID FOR AS REMOVE EXISTING TRAFFIC SIGNAL EQUIPMENT:

- MAST ARM ASSEMBLY FOR NORTHBOUND TRAFFIC (1 EACH)
- MAST ARM ASSEMBLY FOR SOUTHBOUND TRAFFIC (1 EACH)
- TRAFFIC SIGNAL POSTS (1 EACH)
- TRAFFIC SIGNAL HEAD FOR NORTHBOUND TRAFFIC (3 EACH)
- TRAFFIC SIGNAL HEAD FOR SOUTHBOUND TRAFFIC (4 EACH)
- TRAFFIC SIGNAL HEAD FOR EASTBOUND TRAFFIC (1 EACH)

EXISTING TRAFFIC SIGNALS SHALL BE BOTH VISABLE AND OPERATIONAL UNTIL THE PROPOSED SIGNALS ARE TO BE ACTIVATED.



TRAFFIC SIGNAL PLAN LEGEND

	CONTROLLER
	STEEL MAST ARM
	EX SIGNAL HEAD W/BACKPLATE
	EX UNDERGROUND CONDUIT
	HANDHOLE
	DOUBLE HANDHOLE
	SIGNAL POST
	PED PUSH BUTTON DETECTOR
	POWER POLE SERVICE
	JUNCTION BOX

MODEL: D:\p1\work\project\illinois.gov\_elizabeth.friederichs\15-shl-traffic\_signal\_plan.dgn  
FILE NAME: c:\pw\work\project\illinois.gov\_elizabeth.friederichs\15-shl-traffic\_signal\_plan.dgn

USER NAME =	DESIGNED -	REVISED -
	DRAWN -	REVISED -
	CHECKED -	REVISED -
PLOT DATE = 3/26/2026	DATE -	REVISED -

STATE OF ILLINOIS  
DEPARTMENT OF TRANSPORTATION

TRAFFIC SIGNAL REMOVAL PLAN  
IL 251 & EASTBOUND I-80 RAMP

SCALE: SHEET OF SHEETS STA. TO STA.

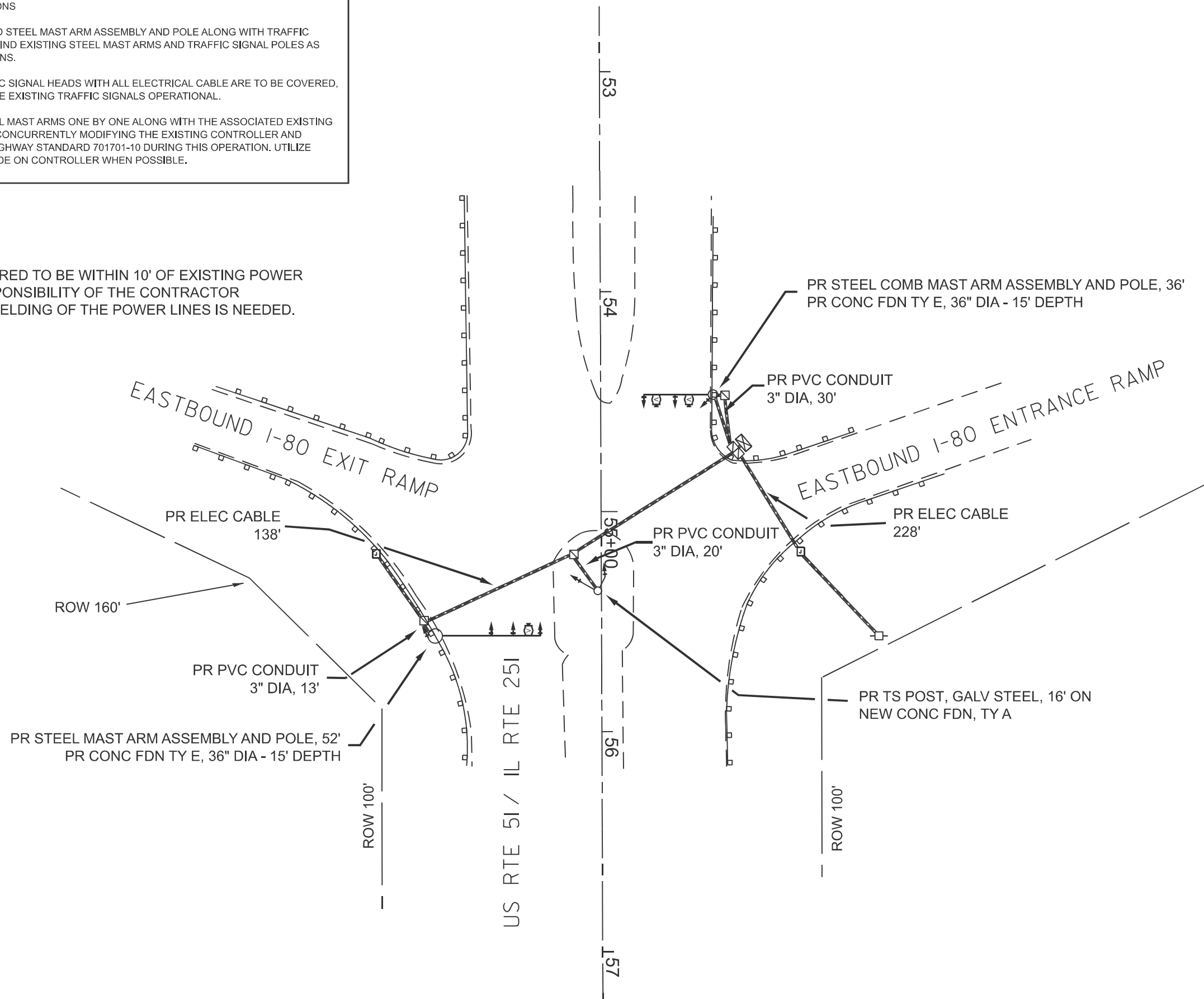
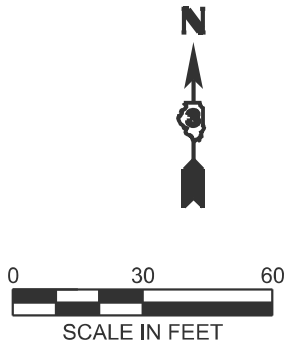
F.A.P. RTE.	SECTION	COUNTY	TOTAL SHEETS	SHEET NO.
*	(50-2) & (1)TS	LASALLE	27	14
FAP 46 & FAU 6101 (IL 251)		CONTRACT NO. 66T15		
ILLINOIS FED. AID PROJECT				

SEQUENCE OF OPERATIONS

1. INSTALL PROPOSED STEEL MAST ARM ASSEMBLY AND POLE ALONG WITH TRAFFIC SIGNAL POLES BEHIND EXISTING STEEL MAST ARMS AND TRAFFIC SIGNAL POLES AS SHOWN IN THE PLANS.
2. PROPOSED TRAFFIC SIGNAL HEADS WITH ALL ELECTRICAL CABLE ARE TO BE COVERED, WHILE KEEPING THE EXISTING TRAFFIC SIGNALS OPERATIONAL.
3. REMOVE THE STEEL MAST ARMS ONE BY ONE ALONG WITH THE ASSOCIATED EXISTING ELECTRIC CABLE, CONCURRENTLY MODIFYING THE EXISTING CONTROLLER AND CABINET. APPLY HIGHWAY STANDARD 701701-10 DURING THIS OPERATION. UTILIZE FLASHING RED MODE ON CONTROLLER WHEN POSSIBLE.

NOTES:

WORK THAT IS REQUIRED TO BE WITHIN 10' OF EXISTING POWER LINES. IT IS THE RESPONSIBILITY OF THE CONTRACTOR TO DETERMINE IF SHIELDING OF THE POWER LINES IS NEEDED.



TRAFFIC SIGNAL PLAN LEGEND

	CONTROLLER
	STEEL MAST ARM
	EX SIGNAL HEAD W/BACKPLATE
	PR. SIGNAL HEAD W/BACKPLATE
	EX. UNDERGROUND CONDUIT
	PR UNDERGROUND CABLE
	HANDHOLE
	DOUBLE HANDHOLE
	SIGNAL POST
	PED PUSH BUTTON DETECTOR
	POWER POLE SERVICE

MODEL: Default  
FILE NAME: c:\pwwork\work\illinois.gov\_ellizabeth.findleysmith@illinois.gov\d116690\0365T15-shr-traffic-signal-plan.dgn

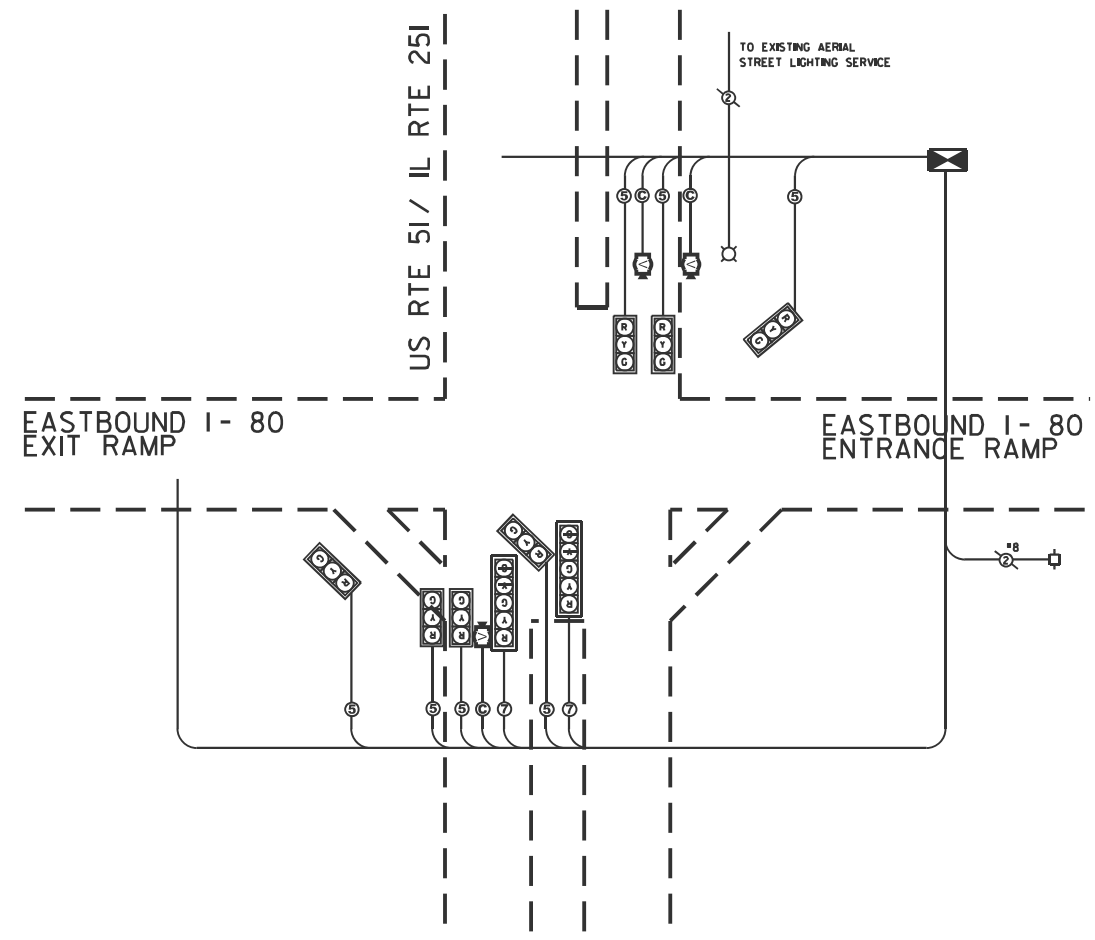
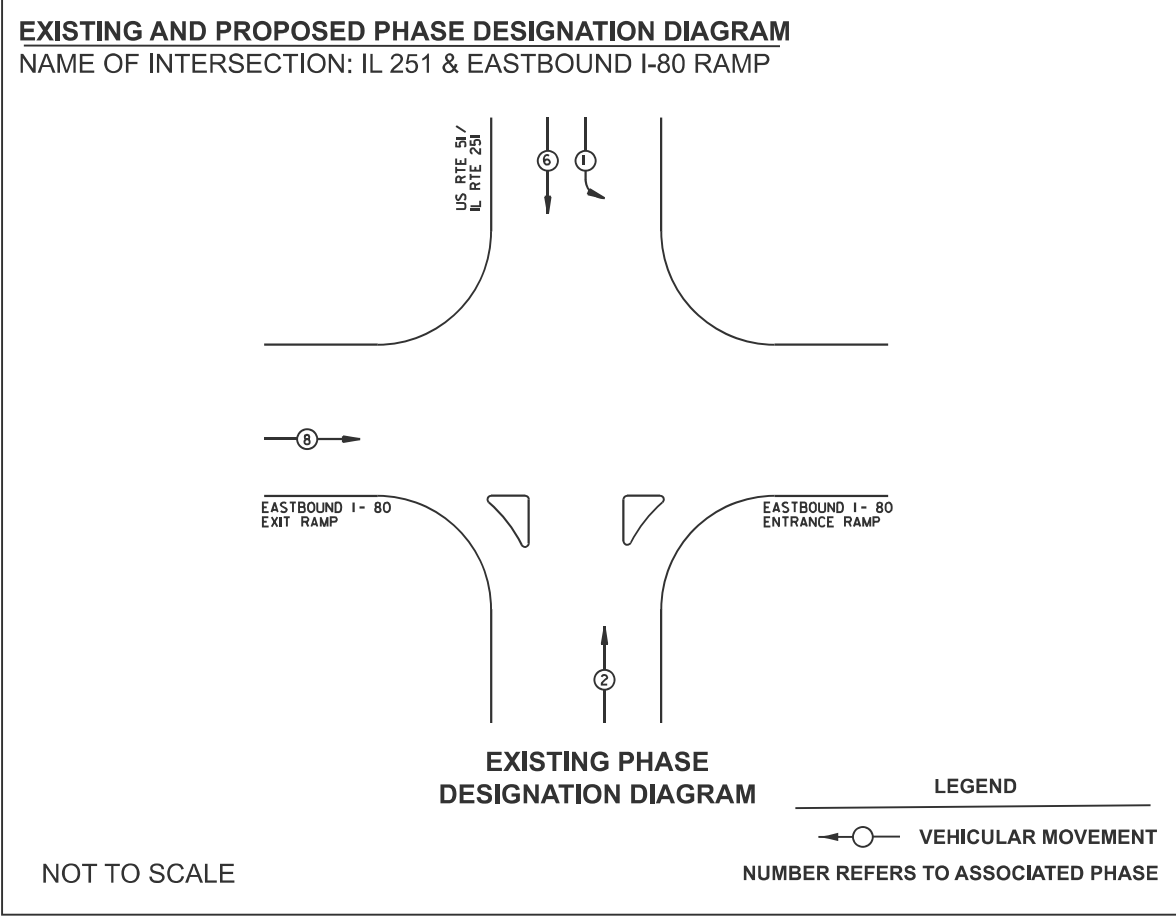
USER NAME =	DESIGNED -	REVISED -
	DRAWN -	REVISED -
	CHECKED -	REVISED -
PLOT DATE = 3/26/2026	DATE -	REVISED -

STATE OF ILLINOIS  
DEPARTMENT OF TRANSPORTATION

PROPOSED TRAFFIC SIGNAL PLAN  
IL 251 & EASTBOUND I-80 RAMPS

SCALE: SHEET OF SHEETS STA. TO STA.

F.A.P. RTE.	SECTION	COUNTY	TOTAL SHEETS	SHEET NO.
-	(50-2) & (1)TS	LASALLE	27	15
FAP 46 & FAU 6101 (IL 251)		CONTRACT NO. 66T15		
ILLINOIS FED. AID PROJECT				



**CABLE PLAN LEGEND**

	8" TRAFFIC SIGNAL SECTION
	12" TRAFFIC SIGNAL SECTION
	12" PEDESTRIAN SIGNAL SECTION
	EX CONTROLLER CABINET
	VEHICLE DETECTOR, INDUCTION LOOP
	PUSHBUTTON DETECTOR
	DENOTES NUMBER OF CONDUCTORS
	INDICATES EX CABLE
	SIGNAL FACE WITH BACKPLATE "P" INDICATES OPTICAL PROGRAMMING
	VIDEO DETECTION SYSTEM
	SERVICE INSTALLATION EXISTING
	DUAL-INDICATION SIGNAL SECTION
	ELECTRICAL CABLE IN CONDUIT

MODEL: Default  
 FILE NAME: c:\pwwork\pwwork\illinois.gov\_eftzabeth.findleysmith@illinois.gov\1166806\1166806\366T15-shit-cable-plan-&-phase-designation.dgn

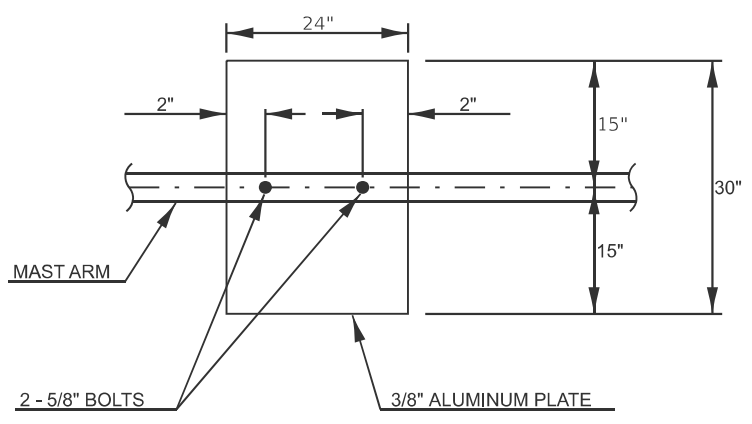
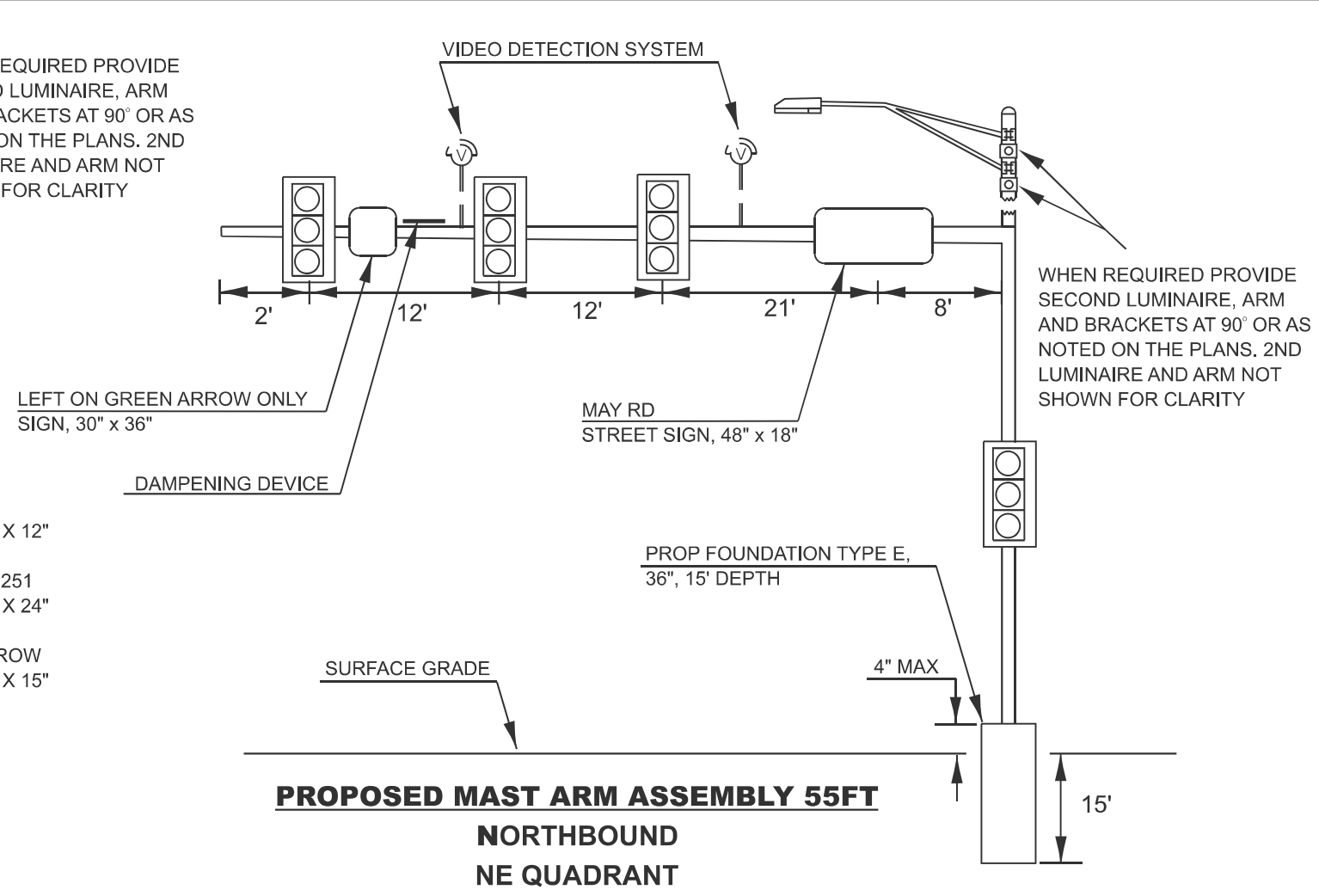
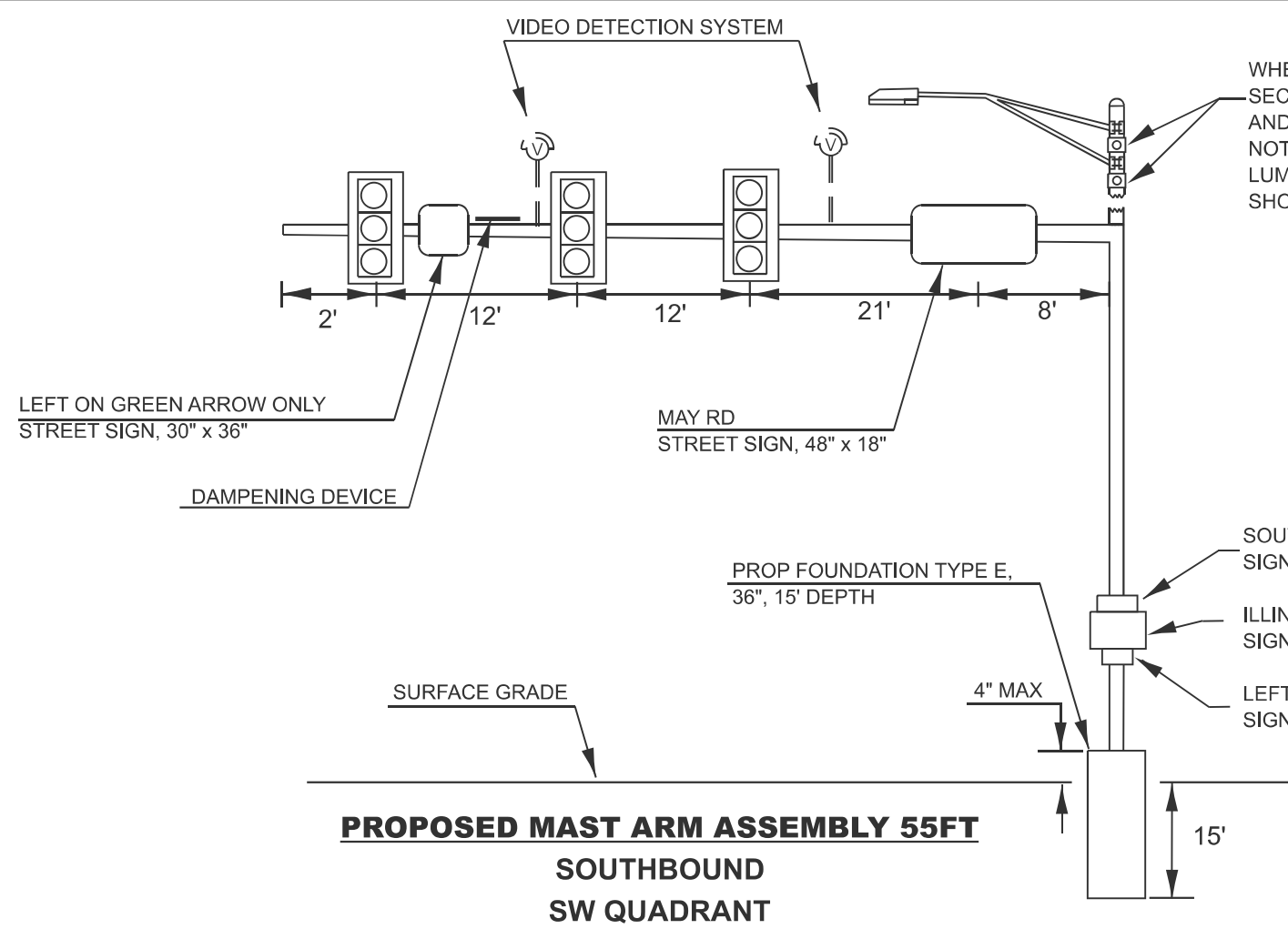
USER NAME = beth.findleysmith	DESIGNED -	REVISED -
DRAWN -	REVISIONS -	REVISIONS -
CHECKED -	REVISIONS -	REVISIONS -
PLOT DATE = 3/25/2026	DATE -	REVISIONS -

**STATE OF ILLINOIS**  
**DEPARTMENT OF TRANSPORTATION**

**CABLE PLAN & PHASE DESIGNATION DIAGRAM**  
**IL 251 & EASTBOUND I-80 RAMP**

SCALE: SHEET OF SHEETS STA. TO STA.

F.A. RTE.:	SECTION	COUNTY	TOTAL SHEETS	SHEET NO.
*	(50-2) & (1)TS	LASALLE	27	16
FAP 46 & FAU 6101 (IL 251)		CONTRACT NO. 66T15		
ILLINOIS FED. AID PROJECT				



**DAMPENING PLATE DETAIL (NTS)**  
(TOP VIEW) INCIDENTAL TO MAST ARM QTY

NOTE:  
CAMERA LOCATION ON MAST ARMS TO BE DETERMINED BY EQUIPMENT MANUFACTURER.

MODEL: Default  
FILE NAME: c:\pwworkspace\illinois.gov\_alizabeth.findley.smith\illinois\pwworkspace\166806\0366T15-sh-mast arm\_details.dgn

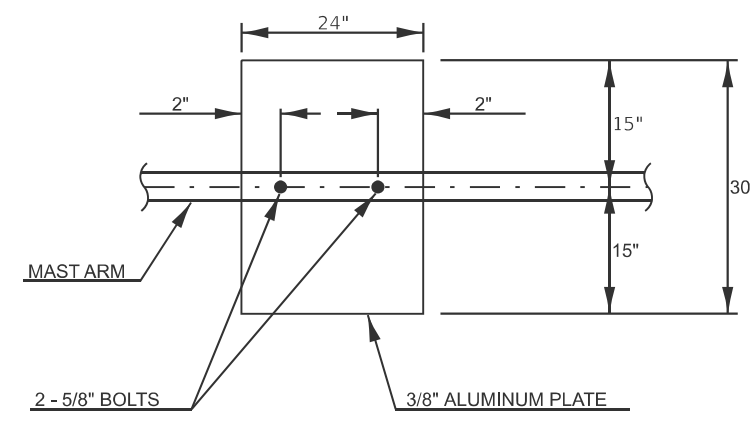
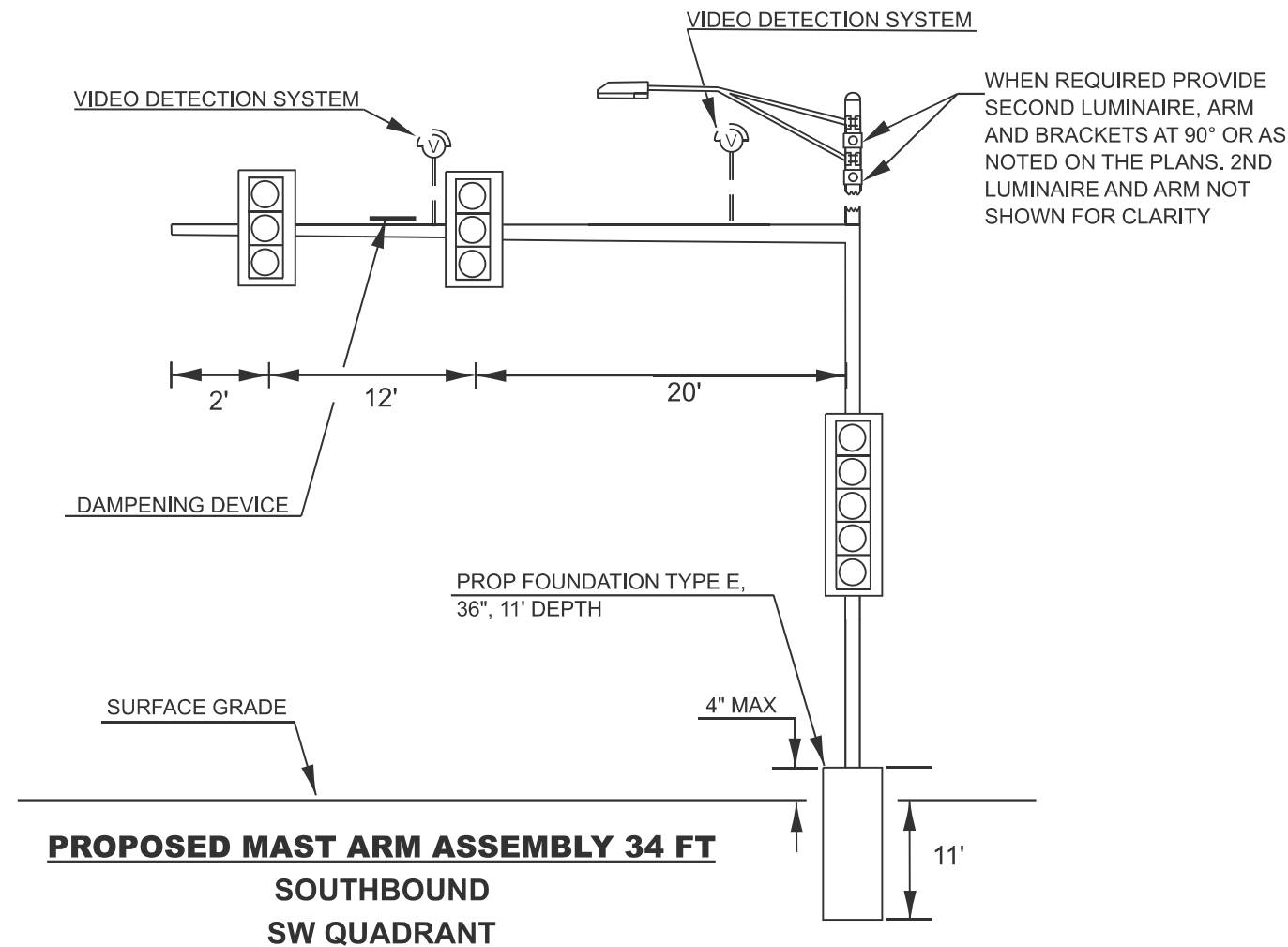
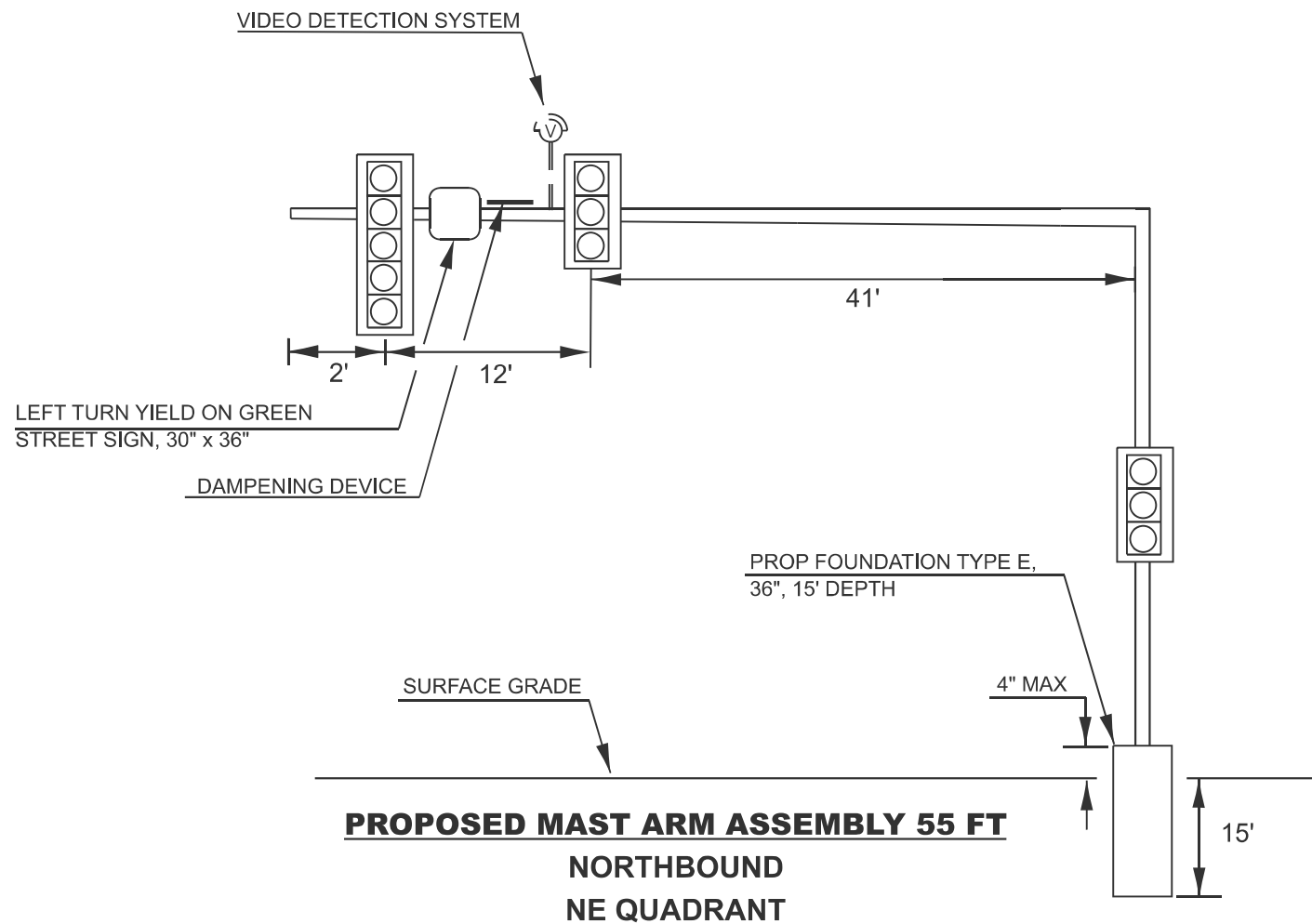
USER NAME = Beth.FindleySmith	DESIGNED -	REVISED -
	DRAWN -	REVISED -
	CHECKED -	REVISED -
PLOT DATE = 3/24/2026	DATE -	REVISED -

STATE OF ILLINOIS  
DEPARTMENT OF TRANSPORTATION

IL 251 & MAY / LASALLE RD  
MAST ARM DESIGN

SCALE: SHEET OF SHEETS STA. TO STA.

F.A. RTE.	SECTION	COUNTY	TOTAL SHEETS	SHEET NO.
	(50-2) & (1)TS	LASALLE	27	17
FAP 46 & FAU 6101 (IL 251)		CONTRACT NO. 66T15		
ILLINOIS FED. AID PROJECT				



**DAMPENING PLATE DETAIL (NTS)**  
(TOP VIEW) INCIDENTAL TO MAST ARM QTY

NOTE:  
CAMERA LOCATION ON MAST ARMS TO BE DETERMINED BY EQUIPMENT MANUFACTURER.

MODEL: Default  
FILE NAME: c:\pwworkspace\illinois.gov\_e\it\elizabeth.findley\smith\illinois.gov\d1186506\0366T15-shc-mast arm details.dgn

USER NAME = Beth.FindleySmith	DESIGNED -	REVISED -
	DRAWN -	REVISED -
	CHECKED -	REVISED -
PLOT DATE = 3/24/2026	DATE -	REVISED -

**STATE OF ILLINOIS**  
**DEPARTMENT OF TRANSPORTATION**

<b>IL 251 &amp; WESTBOUND I-80 RAMPS</b>				
<b>MAST ARM DESIGN</b>				
SCALE:	SHEET	OF	SHEETS	STA. TO STA.

F.A. RTE.	SECTION	COUNTY	TOTAL SHEETS	SHEET NO.
	(50-2) & (1)TS	LASALLE	27	18
FAP 46 & FAU 6101 (IL 251)			CONTRACT NO. 66T15	
ILLINOIS FED. AID PROJECT				

VIDEO DETECTION SYSTEM

VIDEO DETECTION SYSTEM

WHEN REQUIRED PROVIDE SECOND LUMINAIRE, ARM AND BRACKETS AT 90° OR AS NOTED ON THE PLANS. 2ND LUMINAIRE AND ARM NOT SHOWN FOR CLARITY

LEFT TURN YIELD ON GREEN STREET SIGN, 30" x 36"

DAMPENING DEVICE

DAMPENING DEVICE

PROP FOUNDATION TYPE E, 36", 15' DEPTH

PROP FOUNDATION TYPE E, 36", 11' DEPTH

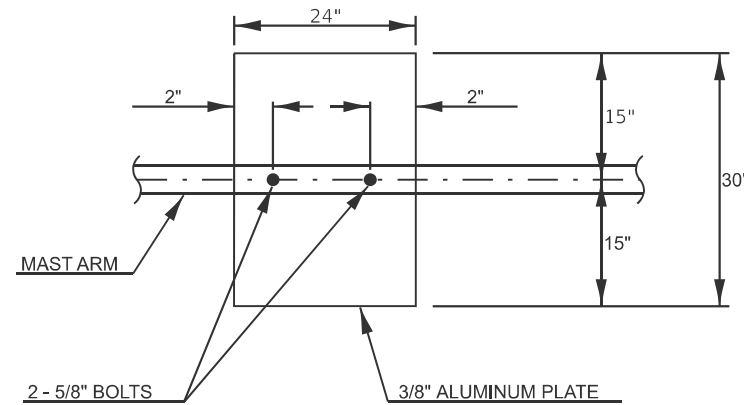
SURFACE GRADE

SURFACE GRADE

**PROPOSED MAST ARM ASSEMBLY 52 FT**  
SOUTHBOUND SW QUADRANT

**PROPOSED MAST ARM ASSEMBLY 36 FT**  
NORTHBOUND NE QUADRANT

ONE WAY SIGN 48" x 18"



**DAMPENING PLATE DETAIL (NTS)**  
(TOP VIEW) INCIDENTAL TO MAST ARM QTY

NOTE:

CAMERA LOCATION ON MAST ARMS TO BE DETERMINED BY EQUIPMENT MANUFACTURER.

MODEL: Default  
FILE NAME: c:\pwworking\elidoc\illinois.gov\_elizbeth.findley\smith\1166806\366T15-sht-mast arm details.dgn

USER NAME = Beth.FindleySmith	DESIGNED -	REVISED -
	DRAWN -	REVISED -
	CHECKED -	REVISED -
PLOT DATE = 3/24/2026	DATE -	REVISED -

STATE OF ILLINOIS  
DEPARTMENT OF TRANSPORTATION

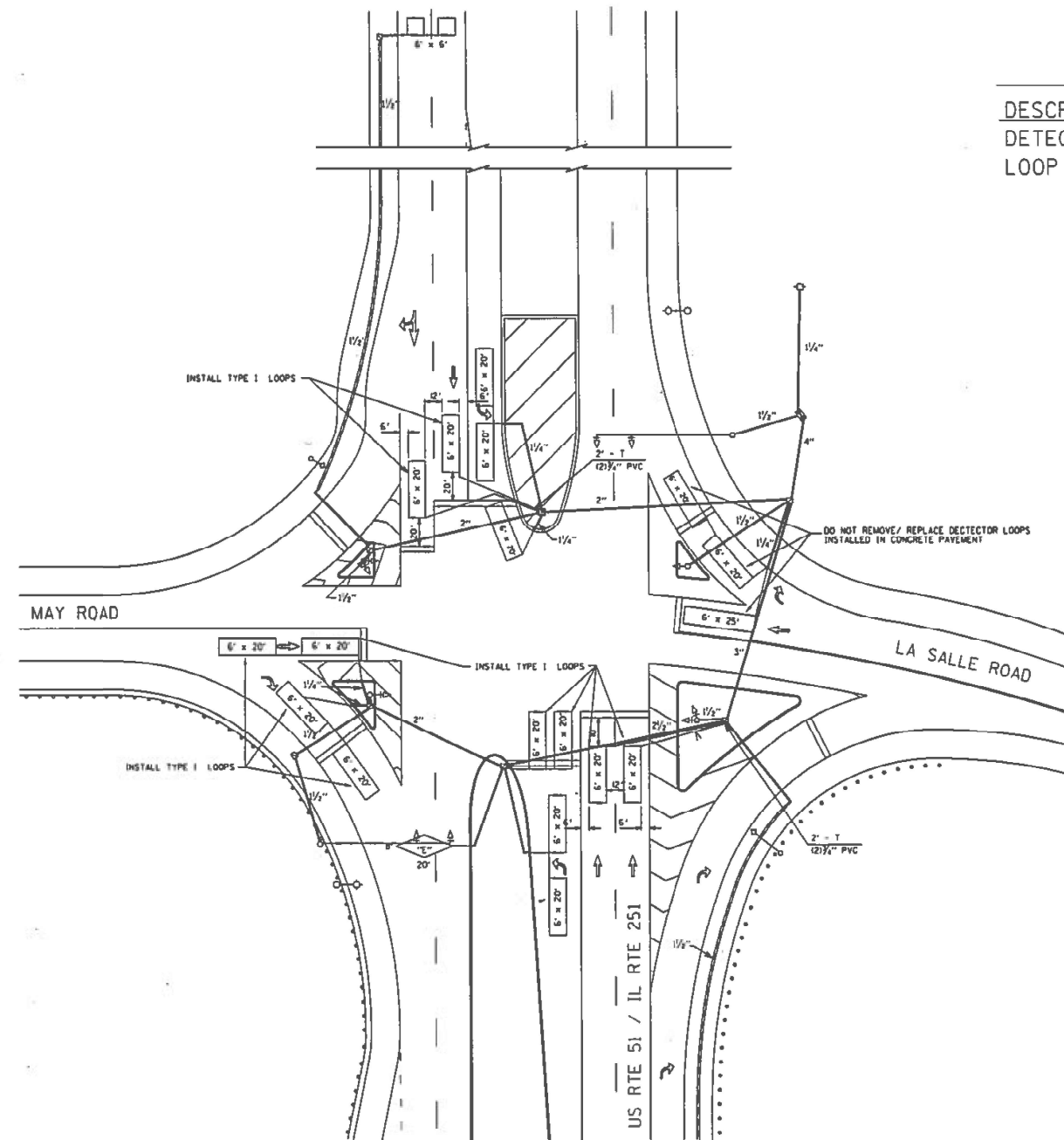
IL 251 & EASTBOUND I-80 RAMPS  
MAST ARM DESIGN

SCALE: SHEET OF SHEETS STA. TO STA.

F.A. RTE.	SECTION	COUNTY	TOTAL SHEETS	SHEET NO.
	(50-2) & (1)TS	LASALLE	27	19
FAP 46 & FAU 6101 (IL 251)		CONTRACT NO. 66T15		
ILLINOIS FED. AID PROJECT				

# SCHEDULE OF QUANTITIES

DESCRIPTION	UNIT	QUANTITY
DETECTOR LOOP, TYPE 1	FOOT	986
LOOP DETECTOR TESTING	EACH	1



**TRAFFIC SIGNAL GENERAL NOTES:**  
 1. PLACE DETECTOR LOOPS IN BINDER  
 2. DETECTOR LOOPS SHALL HAVE FOUR TURNS  
 3. SAW CUT EXISTING DETECTOR LOOPS TO BE ABANDONED  
 4. THE DEPARTMENT OF TRANSPORTATION (8125-434-8506) SHALL BE NOTIFIED AT LEAST 72 HOURS PRIOR TO THE LAYOUT OF THE DETECTOR LOOPS

## TRAFFIC SIGNAL PLAN LEGEND

		CONTROLLER
		DETECTOR LOOP
		DETECTOR LOOP LINE
		UNDERGROUND CONDUIT
		HANDHOLE
		DOUBLE HANDHOLE
		HEAVY DUTY HANDHOLE
		PED. PUSHBUTTON DETECTOR
		PED. SIGNAL HEAD
		POWER POLE SERVICE
		SIGNAL HEAD W/ BACKPLATE
		SIGNAL POST
		STEEL MAST ARM
		WOOD POLE
		ELECTRICAL CABLE IN CONDUIT

# FOR INFORMATION ONLY

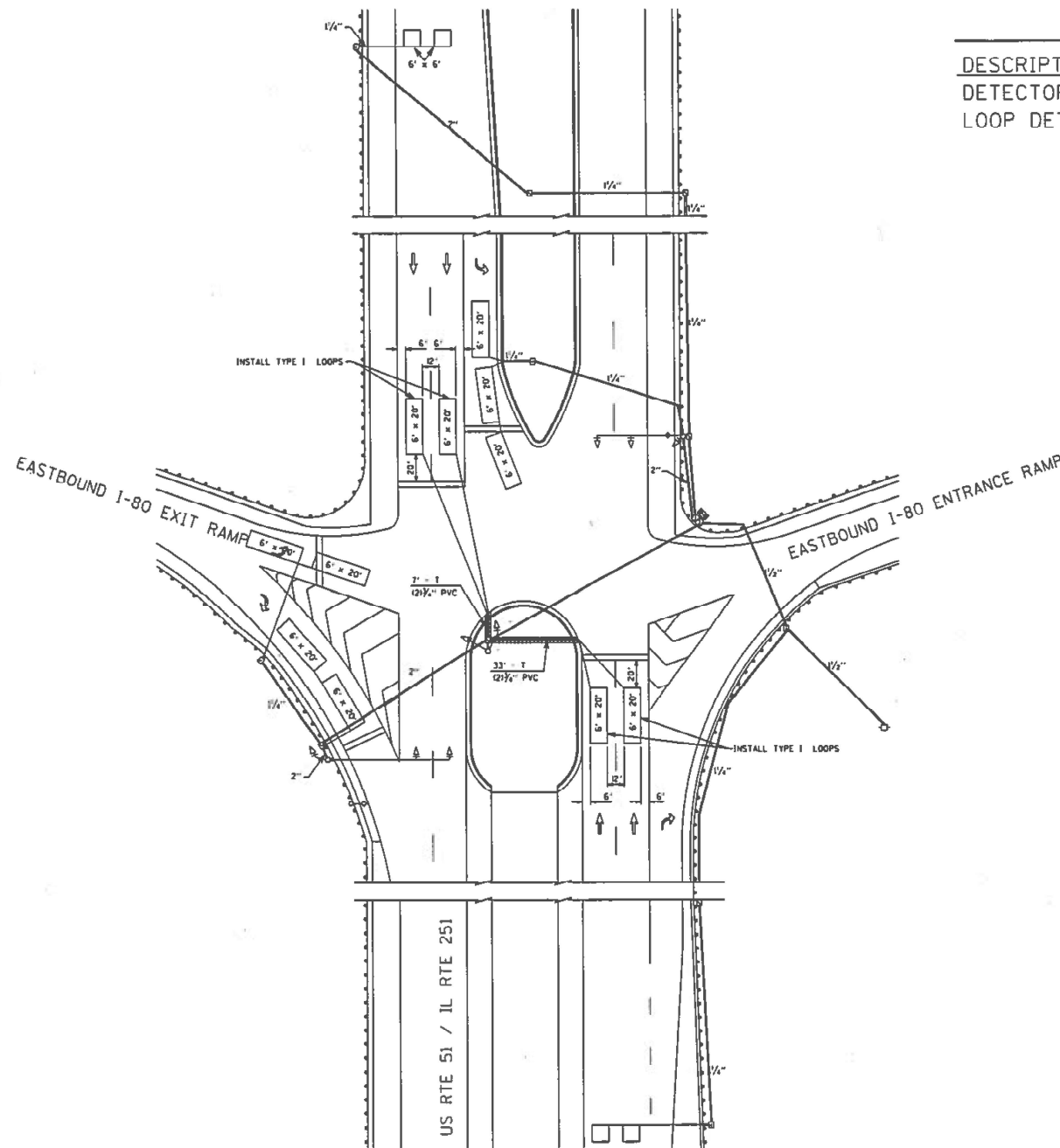
FILE NAME: d:\work\pav\dat\adncamb\8296614\036207-sh1-detail1.dgn	USER NAME: duncasmb	DESIGNED: -	REVISED: -	<b>STATE OF ILLINOIS DEPARTMENT OF TRANSPORTATION</b>	<b>IL 251 AND MAY/LASALLE ROAD TRAFFIC SIGNAL PLAN</b>	F.A.P. RTE. 46	SECTION (1)J2R5-4	COUNTY LASALLE	TOTAL SHEETS 54	SHEET NO. 34	
PLOT SCALE: 1/8" = 1'-0"	CHECKED: -	REVISED: -	SCALE: -			SHEET NO. OF SHEETS -	STA. -	TO STA. -	ILLINOIS FED. AID PROJECT CONTRACT NO. 66C07		
PLOT DATE: 6/14/2014	DATE: -	REVISED: -									

USER NAME: Beth.FindleySmith	DESIGNED: -	REVISED: -	<b>STATE OF ILLINOIS DEPARTMENT OF TRANSPORTATION</b>	<b>EXISTING TRAFFIC SIGNAL PLAN IL 251 &amp; MAY / LASALLE RD</b>	F.A.P. RTE. -	SECTION (50-2) & (1)TS	COUNTY LASALLE	TOTAL SHEETS 27	SHEET NO. 20	
PLOT DATE: 3/24/2026	CHECKED: -	REVISED: -			SCALE: -	SHEET OF SHEETS -	STA. -	TO STA. -	ILLINOIS FED. AID PROJECT FAP 46 & FAU 6101 (IL 251) CONTRACT NO. 66T15	
DATE: -	REVISED: -									



# SCHEDULE OF QUANTITIES

DESCRIPTION	UNIT	QUANTITY
DETECTOR LOOP, TYPE 1	FOOT	952
LOOP DETECTOR TESTING	EACH	1



**TRAFFIC SIGNAL GENERAL NOTES:**  
 1. PLACE DETECTOR LOOPS IN BINDER  
 2. DETECTOR LOOPS SHALL HAVE FOUR TURNS  
 3. SAW CUT EXISTING DETECTOR LOOPS TO BE ABANDONED  
 4. THE DEPARTMENT OF TRANSPORTATION (8125-434-8506) SHALL BE NOTIFIED AT LEAST 72 HOURS PRIOR TO THE LAYOUT OF THE DETECTOR LOOPS

## TRAFFIC SIGNAL PLAN LEGEND

	CONTROLLER
	DETECTOR LOOP
	DETECTOR LOOP LINE
	UNDERGROUND CONDUIT
	HANDHOLE
	DOUBLE HANDHOLE
	HEAVY DUTY HANDHOLE
	PED. PUSHBUTTON DETECTOR
	PED. SIGNAL HEAD
	POWER POLE SERVICE
	SIGNAL HEAD W/ BACKPLATE
	SIGNAL POST
	STEEL MAST ARM
	WOOD POLE
	ELECTRICAL CABLE IN CONDUIT

# FOR INFORMATION ONLY

FILE NAME =	USER NAME = duncand	DESIGNED =	REVISED =	<b>STATE OF ILLINOIS DEPARTMENT OF TRANSPORTATION</b>	<b>IL 251 &amp; EASTBOUND I-80 RAMPS TRAFFIC SIGNAL PLAN</b>		F.A.P. RTE. =	SECTION	COUNTY	TOTAL SHEETS	SHEET NO.
CB7 sht-detail.dgn		DRAWN =	REVISED =		46	(L)JZRS-4	LASALLE	54	38		
PLOT SCALE = 1/8" = 1'-0"		CHECKED =	REVISED =		SCALE: SHEET NO. OF SHEETS STA. TO STA.		ILLINOIS FED. AID PROJECT CONTRACT NO. 66C07				
PLOT DATE = 5/14/2014		DATE =	REVISED =								

MODEL: Default  
FILE NAME: c:\pw\work\work\illinois.gov\elizabeth.findley\smith\illinois.gov\1168806\0386T15-sht-detail.dgn

USER NAME = Beth.FindleySmith	DESIGNED =	REVISED =	<b>STATE OF ILLINOIS DEPARTMENT OF TRANSPORTATION</b>	<b>FOR INFORMATION STREET SIGN STANDARDS</b>		F.A. RTE. =	SECTION	COUNTY	TOTAL SHEETS	SHEET NO.
	DRAWN =	REVISED =		(50-2) & (1)TS	LASALLE	27	22			
	CHECKED =	REVISED =		SCALE: SHEET OF SHEETS STA. TO STA.		ILLINOIS FED. AID PROJECT CONTRACT NO. 66T15				
PLOT DATE = 3/24/2026	DATE =	REVISED =								









Illinois Department  
of Transportation

Division of Highways  
IDOT  
FAP 46, FAU 6101 (IL  
251)

# SOIL BORING LOG

Page 1 of 1

Date 11/25/25

ROUTE \_\_\_\_\_ DESCRIPTION I-80 & IL 251 (N) LOGGED BY Larry Myers

SECTION (50-2) & (1)TS LOCATION NE 1/4, SEC. 5, TWP. 33N, RNG. 1E, 3<sup>rd</sup> PM,  
Latitude 41.36708, Longitude -89.126

COUNTY LaSalle DRILLING METHOD Hollow Stem Auger HAMMER TYPE CME Automatic

STRUCT. NO.	DEPTH	BLOWS	UCS	MOST	Surface Water Elev.	DEPTH	BLOWS	UCS	MOST			
Station	H	S	Qu	T	ft	H	S	Qu	T			
BORING NO.	Offset	Ground Surface Elev.	ft	(ft)	(/6")	(tsf)	(%)	ft	(ft)	(/6")	(tsf)	(%)
Augered Black Silty Clay Loam/Silty Loam with Oversized Gravel Pieces - Fill	653.27				Medium Brown Fine Sand with Free Water (continued)	3				16		
					634.27	5						
Hard Brown Silty Clay Loam Till Fill	651.27	4			End of Boring							
		5	4.5	12								
		6	P									
Hard Brown and Gray Silty Clay Loam/Silty Loam Till Fill	-5											
		5										
		6	>4.5	11								
		7	P									
		5										
		7	>4.5	10								
		8	P									
		-10										
		6										
		7	>4.5	11								
		9	P									
		7										
		8	>4.5	13								
		8	P									
Very Stiff Black Silty Clay Loam Topsoil	640.77											
		4										
		4	2.0	25								
		5	P									
Very Stiff Green and Gray Silty Clay Loess												
		3										
		4	2.5	21								
		5	P									
		636.27										
		-20										

The Unconfined Compressive Strength (UCS) Failure Mode is indicated by (B-Bulge, S-Shear, P-Penetrometer)  
The SPT (N value) is the sum of the last two blow values in each sampling zone (AASHTO T206)  
BBS, form 137 (Rev. 8-99)

MODEL: Default  
FILE NAME: c:\pwworking\dot\illinois.gov\elizabeth.findleysmith@illinois.gov\d116606\06101\15-shl-details.dgn

USER NAME = beth.findleysmith	DESIGNED -	REVISED -
	DRAWN -	REVISED -
	CHECKED -	REVISED -
PLOT DATE = 3/26/2026	DATE -	REVISED -

**STATE OF ILLINOIS  
DEPARTMENT OF TRANSPORTATION**

**I-80 & IL 251 (N)  
SOIL BORING LOG**

SCALE: \_\_\_\_\_ SHEET OF \_\_\_\_\_ SHEETS STA. \_\_\_\_\_ TO STA. \_\_\_\_\_

F.A. RTE.	SECTION	COUNTY	TOTAL SHEETS	SHEET NO.
*	(50-2) & (1)TS	LASALLE	27	26
FAP 46 & FAU 6101 (IL 251)		CONTRACT NO. 66T15		
ILLINOIS FED. AID PROJECT				



**Illinois Department of Transportation**  
Division of Highways  
IDOT

# SOIL BORING LOG

Page 1 of 1

Date 11/25/25

ROUTE FAP 46, FAU 6101 (IL 251) DESCRIPTION I-80 & IL 251 (S) Grass Median LOGGED BY Larry Myers

SECTION (50-2) & (1)TS LOCATION NE 1/4, SEC. 5, TWP. 33N, RNG. 1E, 3<sup>rd</sup> PM, Latitude 41.36326, Longitude -89.12564

COUNTY LaSalle DRILLING METHOD Hollow Stem Auger HAMMER TYPE CME Automatic

STRUCT. NO.	DEPTH (ft)	BLOW COUNT (/6")	UCS (tsf)	MOISTURE (%)	Soil Description	Surface Water Elev. (ft)	Stream Bed Elev. (ft)	Groundwater Elev. (ft)	First Encounter (ft)	Upon Completion (ft)	After (ft)	DEPTHS (ft)	BLOW COUNT (/6")	UCS (tsf)	MOISTURE (%)
	654.88				Augered Black Silty Clay Loam with Gravel and Oversized Gravel Pieces										
	652.38														
		5			Hard Brown and Gray Silty Clay Loam/Silty Loam Till Fill										
		8	4.5	14											
		10	P												
		4													
		5	>4.5	13											
		9	P												
		4													
		7	4.5	10											
			P												
		4													
		8	>4.5	12											
		10	P												
	642.38				Very Stiff Black Silty Clay Loam Topsoil										
	641.38				Very Stiff Gray and Brown Silty Clay Loess										
		4													
		5	2.5	26											
		7	P												
		2													
		2	2.0	21											
		4	P												
	637.88				Hard Brown Silty Clay Loam Till										
		5													
		5	4.5	13											
		6	P												
	635.38														

The Unconfined Compressive Strength (UCS) Failure Mode is indicated by (B-Bulge, S-Shear, P-Penetrometer)  
The SPT (N value) is the sum of the last two blow values in each sampling zone (AASHTO T206)

BBS, form 137 (Rev. 8-99)

MODEL: Default  
FILE NAME: c:\pwwork\pwwork\illinois.gov\_ellizbeth.findleysmith@illinois.gov\41166806\0366T15-shl-detailed.dgn

USER NAME = beth.findleysmith	DESIGNED -	REVISED -	<b>STATE OF ILLINOIS DEPARTMENT OF TRANSPORTATION</b>	<b>I-80 &amp; IL 251 (S) SOIL BORING LOG</b>	F.A. RTE. =	SECTION = (50-2) & (1)TS	COUNTY = LASALLE	TOTAL SHEETS = 27	SHEET NO. = 27
DRAWN -	REVISED -	FAP 46 & FAU 6101 (IL 251)			CONTRACT NO. 66T15				
CHECKED -	REVISED -	ILLINOIS FED. AID PROJECT							
DATE = 3/26/2026	REVISED -	SCALE:			SHEET OF SHEETS	STA. TO STA.			