

INDEX OF SHEETS

- 1. COVER SHEET
- 2. GENERAL NOTES
- 3. SUMMARY OF QUANTITIES
- 4. TYPICAL SECTIONS
- 5-6. SCHEDULES
- 7-8. COUNTY LOCATION MAPS

HIGHWAY STANDARDS

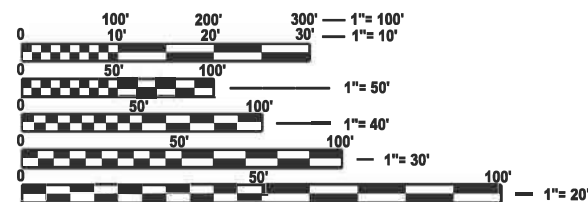
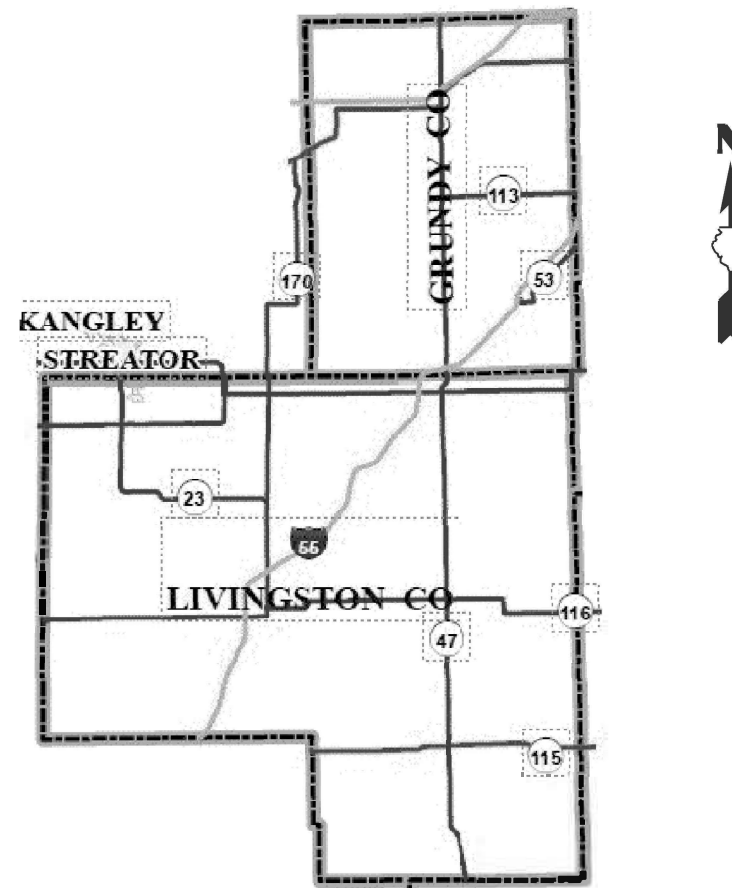
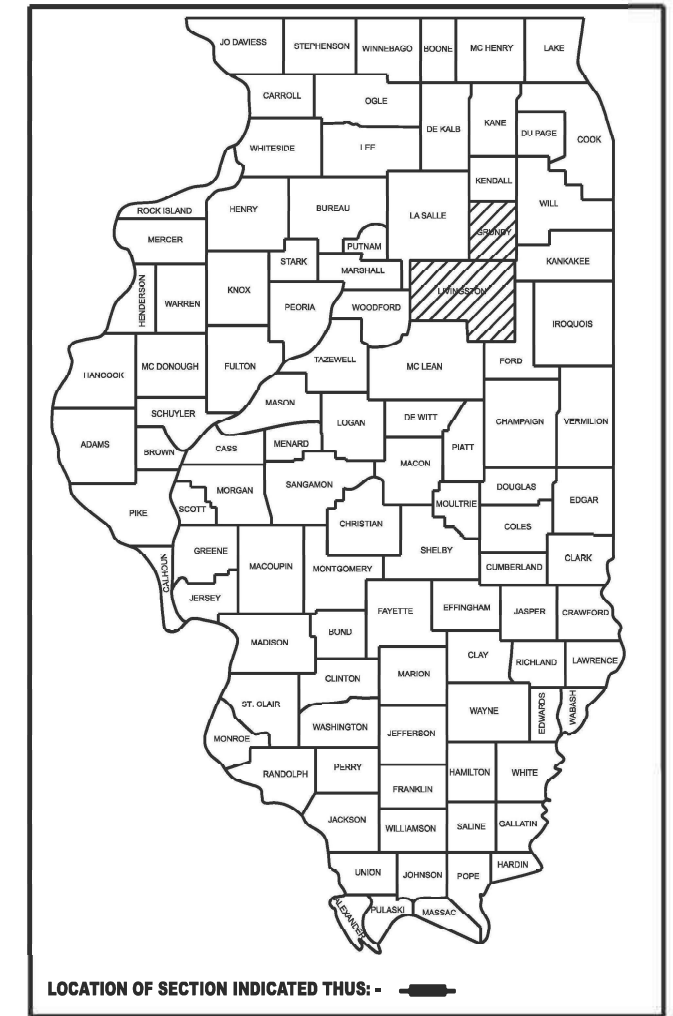
- 701101-05 OFF-ROAD OPERATIONS, MULTILANE, 15' TO 24" FROM PAVEMENT EDGE
- 701106-02 OFF-ROAD OPERATIONS, MULTILANE, MORE THAN 15' AWAY
- 701426-09 LANE CLOSURE, MULTILANE INTERMITTENT OR MOVING OPERATION, FOR SPEEDS ≥ 45 MPH
- 701428-01 TRAFFIC CONTROL, SETUP AND REMOVAL, FREEWAY/EXPRESSWAY
- 701456-05 PARTIAL EXIT RAMP CLOSURE FREEWAY/EXPRESSWAY
- 701901-11 TRAFFIC CONTROL DEVICES

**STATE OF ILLINOIS
DEPARTMENT OF TRANSPORTATION**

**PROPOSED
HIGHWAY PLANS**

**FAI ROUTE 55 (I-55)
SECTION LITTER REMOVAL 2026-2
INTERSTATE HIGHWAY CLEANING
(LITTER REMOVAL)
GRUNDY AND LIVINGSTON COUNTIES
C-93-069-26**

F.A.I. RTE.	SECTION	COUNTY	TOTAL SHEETS	SHEET NO.
I-55	LITTER REMOVAL 2026-2	VARIOUS	8	1
ILLINOIS			CONTRACT NO. 66T41	



FULL SIZE PLANS HAVE BEEN PREPARED USING STANDARD ENGINEERING SCALES. REDUCED SIZED PLANS WILL NOT CONFORM TO STANDARD SCALES. IN MAKING MEASUREMENTS ON REDUCED PLANS, THE ABOVE SCALES MAY BE USED.

J.U.L.I.E.
JOINT UTILITY LOCATION INFORMATION FOR EXCAVATION
1-800-892-0123
OR 811

**PROJECT ENGINEER: JUNIOR SENAT
UNIT CHIEF: OLADELE POPOOLA
DISTRICT 3 PHONE (815) 434-6131
CONTRACT NO. 66T41**

STATE OF ILLINOIS
DEPARTMENT OF TRANSPORTATION

SUBMITTED March 19, 2026

Triska Thompson
REGIONAL ENGINEER

May 8, 2026

Scott E. [Signature]
ENGINEER OF DESIGN AND ENVIRONMENT

May 8, 2026

[Signature]
DIRECTOR OF HIGHWAYS PROJECT IMPLEMENTATION

**PRINTED BY THE AUTHORITY
OF THE STATE OF ILLINOIS**

GENERAL NOTES

NO WORK WILL BE ALLOWED DURING ANY LEGAL HOLIDAY PERIOD AS DEFINED BY ARTICLE 107.09 OF THE STANDARD SPECIFICATIONS FOR ROAD AND BRIDGE CONSTRUCTION ADOPTED JANUARY 1, 2022

ALL SHOULDER CLOSURES SHALL BE IMMEDIATELY REMOVED DURING ALL ADVERSE WEATHER CONDITIONS WITHOUT EXCEPTIONS. THIS INCLUDES BUT NOT LIMITED TO RAIN, WET ROAD SURFACE (SPRAY FROM TIRES), MIST, DRIZZLE SLEET, SNOW, FOG, OR ANY OTHER CIRCUMSTANCES DETERMINED UNSAFE BY THE ENGINEER. THE CONTRACTOR SHALL IMPLEMENT THIS CONTRACT REQUIREMENT IMMEDIATELY WITHOUT WAITING FOR DEPARTMENT INSTRUCTIONS.

NO NIGHTTIME WORK WILL BE ALLOWED ON THIS CONTRACT.

ALL EXCAVATED MATERIAL, WHICH INCLUDES DIGGING OR GRADING OF ANY SOIL OR FILL MATERIAL, WITH THE EXCEPTION OF AGGREGATE FILLS, MUST BE INCORPORATED WITHIN THE IDOT RIGHT OF WAY.

ADDITIONAL CONSTRUCTION PROJECTS MAY BE UNDER CONTRACT WITHIN OR NEAR THE LIMITS OF THIS PROJECT WHEN IT IS IN FORCE. THE CONTRACTOR FOR THIS PROJECT SHALL COOPERATE WITH THE CONTRACTORS ON THE OTHER PROJECTS ACCORDING TO ARTICLE 105.08 OF THE STANDARD SPECIFICATIONS. CONTRACTS ANTICIPATED TO BE IN THE VICINITY OF THIS CONTRACT ARE: 66P52 AND 66R77.

COMMITEMENTS

NONE

STATE OF ILLINOIS
DEPARTMENT OF TRANSPORTATION
DISTRICT THREE
AS BUILT INFORMATION

SUPERVISING CONSTRUCTION FIELD ENGINEER

RESIDENT ENGINEER / TECHNICIAN

START & END DATES
OF CONSTRUCTION:

INSPECTORS:

STATE OF ILLINOIS
DEPARTMENT OF TRANSPORTATION

GENERAL NOTES

SCALE: NO TO SCALE | SHEET 2 OF 8 SHEETS | STA. N/A TO STA. N/A

F.A.I RTE.	SECTION	COUNTY	TOTAL SHEETS	SHEET NO.
I-55	LITTER REMOVAL 2026-2	VARIOUS	8	2
			CONTRACT NO. 66T41	
ILLINOIS FED. AID PROJECT				

USER NAME = Katoska.Simball	DESIGNED - KS	REVISED -
	DRAWN - KS	REVISED -
	CHECKED - JS	REVISED -
PLOT DATE = 3/3/2026	DATE -	REVISED -

CODE NO.	ITEM	UNIT	TOTAL QUANTITY	CONSTRUCTION CODE	
				100% STATE GRUNDY CO.	100% STATE LIVINGSTON CO.
				ROADWAY	ROADWAY
				0044	0044
NONE	NONE				
67100100	MOBILIZATION	L SUM	1	0.35	0.65
X0326643	LITTER PICKING	MILE	100.06	34.24	65.82

MODEL: Default
FILE NAME: c:\p\work\view\illinois.gov_katoska.simball@illinois.gov\d085272666T41.dgn

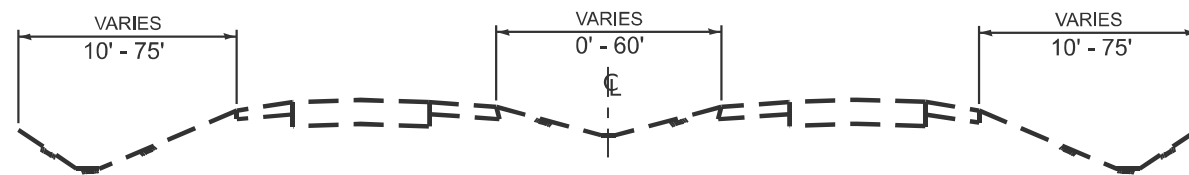
USER NAME = Katoska,Simball	DESIGNED - KS	REVISED -
	DRAWN - KS	REVISED -
	CHECKED - JS	REVISED -
PLOT DATE = 2/3/2026	DATE -	REVISED -

STATE OF ILLINOIS
DEPARTMENT OF TRANSPORTATION

SUMMARY OF QUANTITIES

SCALE: NO TO SCALE SHEET 3 OF 8 SHEETS STA. N/A TO STA. N/A

F.A.I RTE.	SECTION	COUNTY	TOTAL SHEETS	SHEET NO.
I-55	LITTER REMOVAL 2026-2	VARIOUS	8	3
CONTRACT NO. 66T41				
ILLINOIS FED. AID PROJECT				



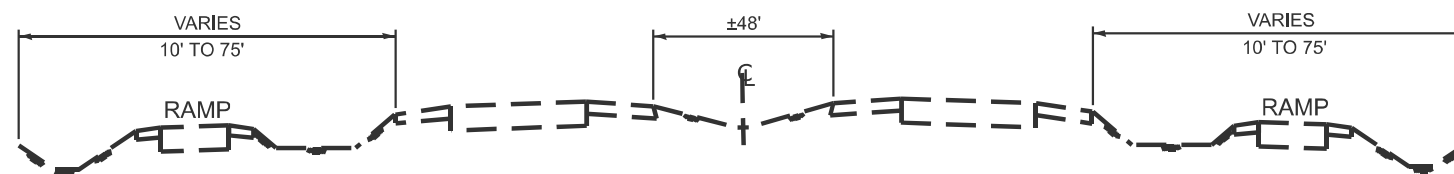
TYPICAL SECTION NO. 1

GRUNDY COUNTY

I-55 MAINLINE - M.M. 218.07 TO M.M. 233.49

LIVINGSTON COUNTY

I-55 MAINLINE - M.M. 187.70 TO M.M. 218.07



TYPICAL SECTION NO. 2

GRUNDY COUNTY

I-55
IL 47
GARDNER RD.
REED RD.

LIVINGSTON COUNTY

I-55
IL 116
IL 23
ODELL RD.
IL 17

MODEL: Default
 FILE NAME: c:\p\work\pww\illinois.gov_katoska.simball@illinois.gov\d085272666T41.dgn

USER NAME = Katoska,Simball	DESIGNED - KS	REVISED -
	DRAWN - KS	REVISED -
	CHECKED - JS	REVISED -
PLOT DATE = 1/23/2026	DATE -	REVISED -

STATE OF ILLINOIS
DEPARTMENT OF TRANSPORTATION

TYPICAL SECTIONS
MAINLINE PAVEMENT AND RAMPS

SCALE: NO TO SCALE SHEET 4 OF 8 SHEETS STA. N/A TO STA. N/A

F.A.I. RTE.	SECTION	COUNTY	TOTAL SHEETS	SHEET NO.
I-55	LITTER REMOVAL 2026-2	VARIOUS	8	4
			CONTRACT NO. 66T41	
		ILLINOIS	FED. AID PROJECT	

LIVINGSTON COUNTY I-55

MCLEAN COUNTY LINE (M.M. 187.70) TO GRUNDY COUNTY LINE (M.M. 218.07)

NORTHBOUND MAINLINE	M.M.	MILES
MCLEAN COUNTY LINE TO	187.70	8.82
IL ROUTE 116	196.52	
IL ROUTE 116 TO	196.52	3.85
IL ROUTE 23	200.37	
IL ROUTE 23 TO	200.37	8.69
ODELL RD.	209.06	
ODELL RD. TO	209.06	7.87
IL ROUTE 17	216.93	
IL ROUTE 17 TO	216.93	1.14
GRUNDY COUNTY LINE	218.07	
NORTHBOUND TOTAL		30.37

SOUTHBOUND MAINLINE	M.M.	MILES
GRUNDY COUNTY LINE TO	218.07	1.14
IL ROUTE 17	216.93	
IL ROUTE 17 TO	216.93	7.87
ODELL RD.	209.06	
ODELL RD. TO	209.06	8.69
IL ROUTE 23	200.37	
IL ROUTE 23 TO	200.37	3.85
IL ROUTE 116	196.52	
IL ROUTE 116 TO	196.52	8.82
MCLEAN COUNTY LINE	187.70	
SOUTHBOUND TOTAL		30.37

RAMPS		
IL ROUTE 116	NORTHBOUND EXIT	0.28
	NORTHBOUND ENTRANCE	0.31
(EXIT 197)	SOUTHBOUND EXIT	0.31
	SOUTHBOUND ENTRANCE	0.33
IL ROUTE 23	NORTHBOUND EXIT	0.24
	NORTHBOUND ENTRANCE	0.35
(EXIT 201)	SOUTHBOUND EXIT	0.28
	SOUTHBOUND ENTRANCE	0.35
ODELL RD.	NORTHBOUND EXIT	0.34
	NORTHBOUND ENTRANCE	0.37
(EXIT 209)	SOUTHBOUND EXIT	0.29
	SOUTHBOUND ENTRANCE	0.27
IL ROUTE 17	NORTHBOUND EXIT	0.33
	NORTHBOUND ENTRANCE	0.33
(EXIT 217)	SOUTHBOUND EXIT	0.37
	SOUTHBOUND ENTRANCE	0.33
RAMP SUBTOTAL		5.08

MAINLINE TOTAL MILES	60.74
RAMP TOTAL MILES	5.08
TOTAL MILAGE	65.82

MODEL: Default
FILE NAME: c:\p\work\pww\illinois.gov_katoska.simball@illinois.gov\d085272666t41.dgn

GRUNDY COUNTY I-55

LIVINGSTON COUNTY LINE (M.M. 218.07) TO WILL COUNTY LINE (M.M. 233.49)

NORTHBOUND MAINLINE	M.M.	MILES
LIVINGSTON COUNTY LINE TO	218.07	1.75
IL ROUTE 47	219.82	
IL ROUTE 47 TO	219.82	7.16
GARDNER RD.	226.98	
GARDNER RD. TO	226.98	6.51
WILL COUNTY LINE (REED RD.)	233.49	
NORTHBOUND TOTAL		15.42

SOUTHBOUND MAINLINE	M.M.	MILES
WILL COUNTY LINE TO (REED RD.)	233.49	6.51
GARDNER RD.	226.98	
GARDNER RD. TO	226.98	7.16
IL ROUTE 47	219.82	
IL ROUTE 47 TO	219.82	1.75
LIVINGSTON COUNTY LINE	218.07	
SOUTHBOUND TOTAL		15.42

RAMPS		
IL ROUTE 47	NORTHBOUND EXIT	0.35
	NORTHBOUND ENTRANCE	0.35
(EXIT 220)	SOUTHBOUND EXIT	0.35
	SOUTHBOUND ENTRANCE	0.40
GARDNER RD.	NORTHBOUND EXIT	0.25
	NORTHBOUND ENTRANCE	0.18
(EXIT 227)	SOUTHBOUND EXIT	0.23
	SOUTHBOUND ENTRANCE	0.25
REED RD.	NORTHBOUND EXIT	0.17
	NORTHBOUND ENTRANCE	0.29
(EXIT 233)	SOUTHBOUND EXIT	0.24
	SOUTHBOUND ENTRANCE	0.34
RAMP TOTAL		3.40

MAINLINE TOTAL MILES	30.84
RAMP TOTAL MILES	3.40
TOTAL MILAGE	34.24

MODEL: Default
 FILE NAME: c:\pwworking\illinois.gov_katoska.simball@illinois.gov\d0852726565741.dgn

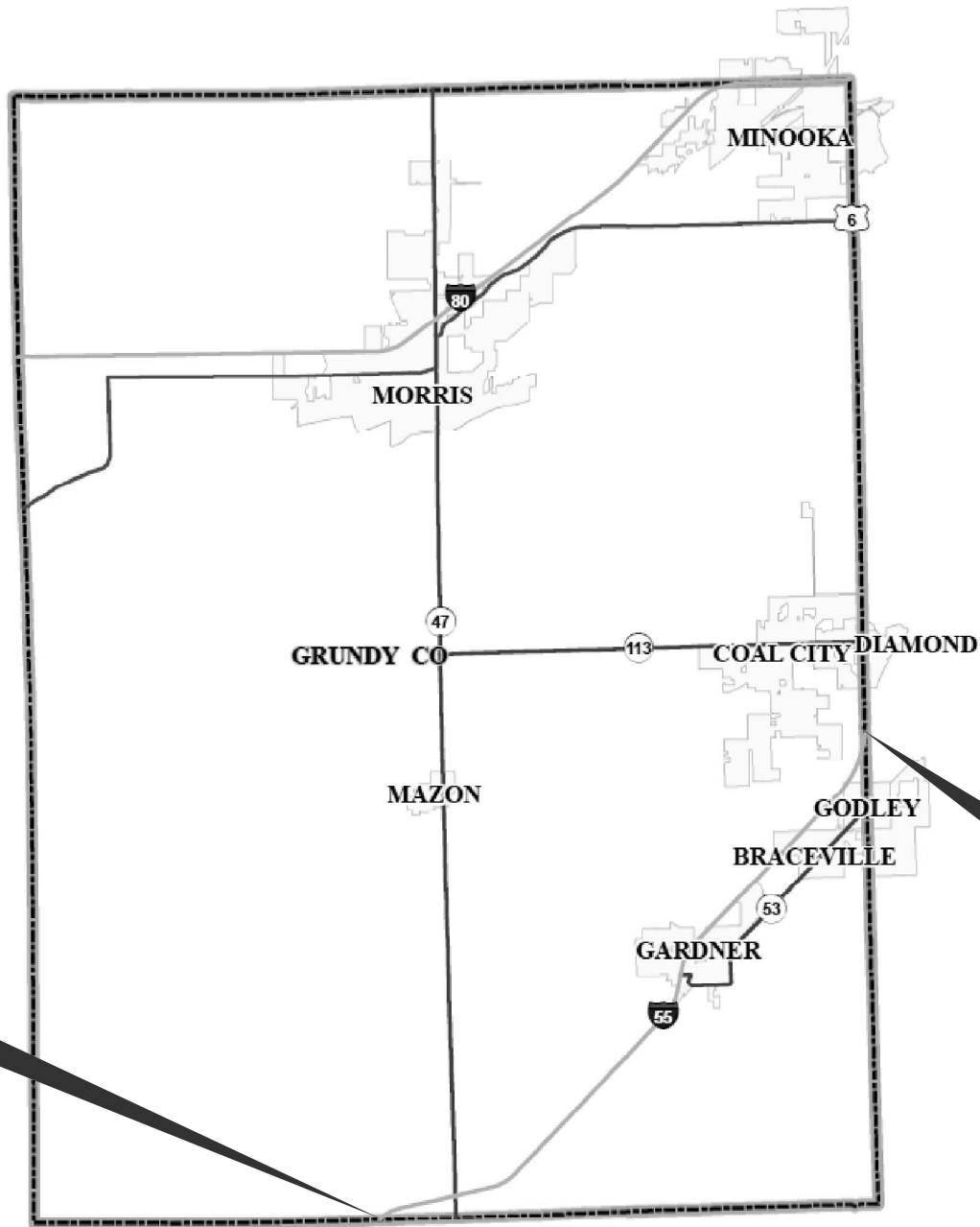
USER NAME = Katoska,Simball	DESIGNED - KS	REVISED -
	DRAWN - KS	REVISED -
	CHECKED - JS	REVISED -
PLOT DATE = 1/23/2026	DATE -	REVISED -

STATE OF ILLINOIS
DEPARTMENT OF TRANSPORTATION

**SCHEDULES
GRUNDY COUNTY**

SCALE: NO TO SCALE SHEET 6 OF 8 SHEETS STA. N/A TO STA. N/A

F.A.I RTE.	SECTION	COUNTY	TOTAL SHEETS	SHEET NO.
I-55	LITTER REMOVAL 2026-2	VARIOUS	8	6
CONTRACT NO. 66T41				
ILLINOIS		FED. AID PROJECT		



PROJECT LIMITS
F.A.I. 55 (I-55)
LIVINGSTON COUNTY LINE
M.M. 218.07

PROJECT LIMITS
F.A.I. 55 (I-55)
WILL COUNTY LINE
M.M. 233.49

MODEL: Default
 FILE NAME: c:\p\work\vw\cd\illinois.gov_katoska.simball@illinois.gov\d085272666T41.dgn

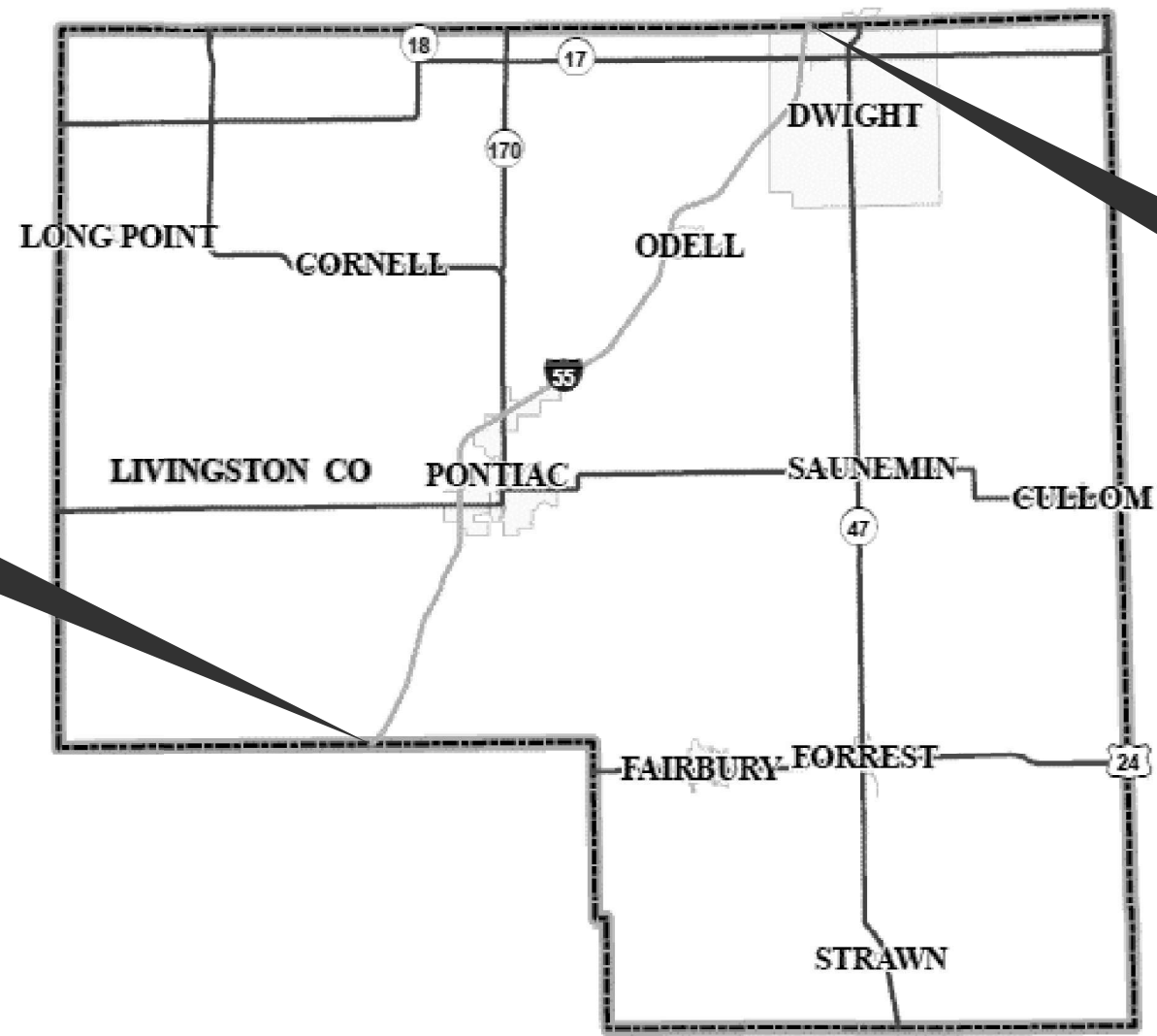
USER NAME = Katoska,Simball	DESIGNED - KS	REVISED -
	DRAWN - KS	REVISED -
	CHECKED - JS	REVISED -
PLOT DATE = 1/23/2026	DATE -	REVISED -

STATE OF ILLINOIS
DEPARTMENT OF TRANSPORTATION

GRUNDY COUNTY
LITTER REMOVAL

SCALE: NO TO SCALE SHEET 7 OF 8 SHEETS STA. N/A TO STA. N/A

F.A.I. RTE.	SECTION	COUNTY	TOTAL SHEETS	SHEET NO.
I-55	LITTER REMOVAL 2026-2	VARIOUS	8	7
ILLINOIS FED. AID PROJECT			CONTRACT NO. 66T41	



PROJECT LIMITS
F.A.I. 55 (I-55)
MCLEAN COUNTY LINE
M.M. 187.70

PROJECT LIMITS
F.A.I. 55 (I-55)
GRUNDY COUNTY LINE
M.M. 218.07

MODEL: Default
 FILE NAME: c:\pwworking\illinois.gov_katoska.simball\illinois.gov\085272666T41.dgn

USER NAME = Katoska,Simball	DESIGNED - KS	REVISED -
	DRAWN - KS	REVISED -
	CHECKED - JS	REVISED -
PLOT DATE = 1/23/2026	DATE -	REVISED -

STATE OF ILLINOIS
DEPARTMENT OF TRANSPORTATION

LIVINGSTON COUNTY
LITTER REMOVAL

SCALE: NO TO SCALE SHEET 8 OF 8 SHEETS STA. N/A TO STA. N/A

F.A.I. RTE.	SECTION	COUNTY	TOTAL SHEETS	SHEET NO.
FAI 55	LITTER REMOVALN 2026-2	VARIOUS	8	8
ILLINOIS			FED. AID PROJECT	

CONTRACT NO. 66T41