

**INDEX OF SHEETS**

- 1 . COVER SHEET
- 2 . GENERAL NOTES
- 3 . SUMMARY OF QUANTITIES
- 4 - 5 . TYPICAL SECTIONS
- 6 - 7 . SCHEDULES
- 8 - 10 . COUNTY LOCATION MAPS

**HIGHWAY STANDARDS**

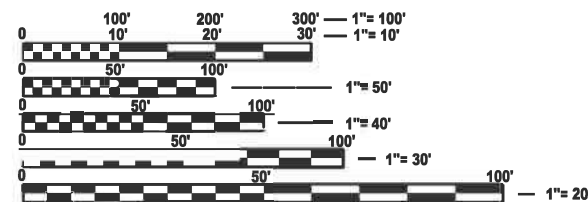
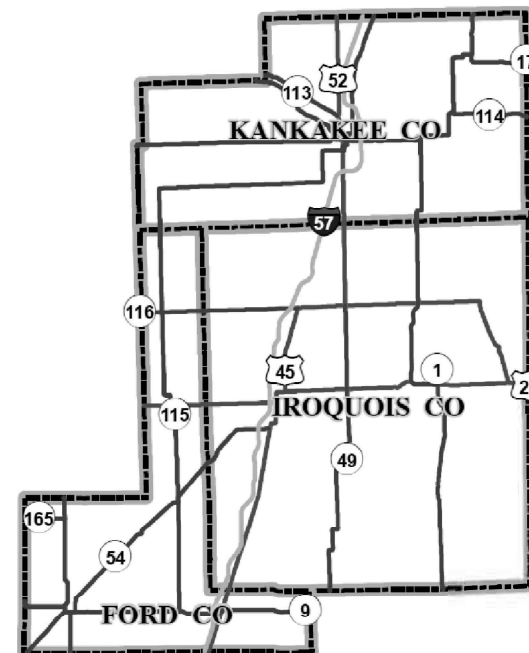
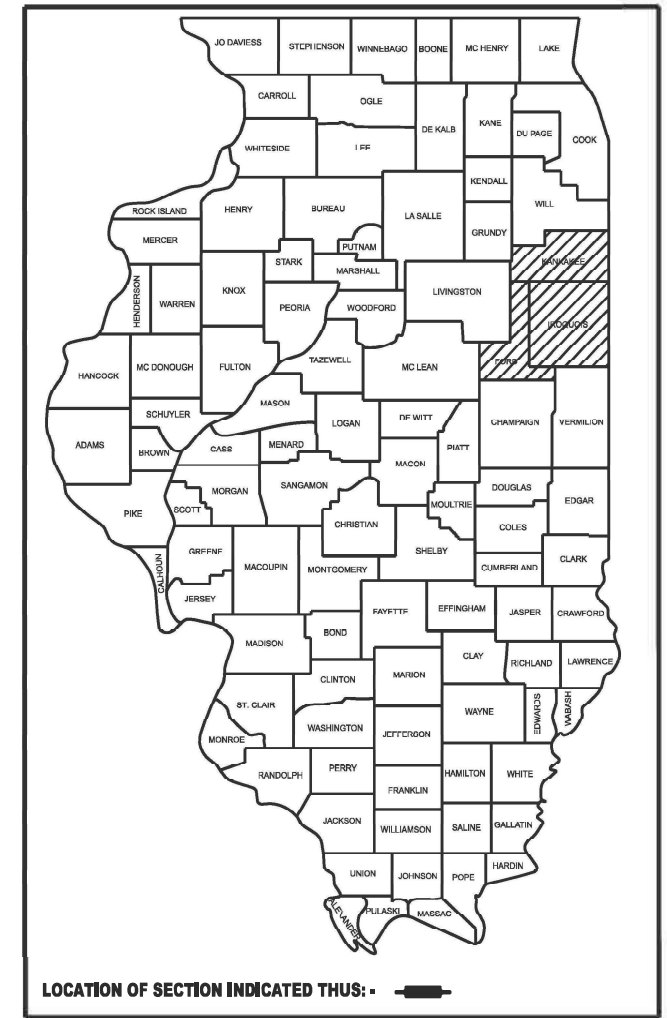
- 701101-05 OFF-ROAD OPERATIONS, MULTILANE, 15' TO 24" FROM PAVEMENT EDGE
- 701106-02 OFF-ROAD OPERATIONS, MULTILANE, MORE THAN 15' AWAY
- 701426-09 LANE CLOSURE, MULTILANE INTERMITTENT OR MOVING OPERATION, FOR SPEEDS ≥ 45 MPH
- 701428-01 TRAFFIC CONTROL, SETUP AND REMOVAL, FREEWAY/EXPRESSWAY
- 701456-05 PARTIAL EXIT RAMP CLOSURE FREEWAY/EXPRESSWAY
- 701901-11 TRAFFIC CONTROL DEVICES

**STATE OF ILLINOIS  
DEPARTMENT OF TRANSPORTATION**

**PROPOSED  
HIGHWAY PLANS**

**FAI ROUTE 57 (I-57)  
SECTION LITTER REMOVAL 2026-3  
INTERSTATE HIGHWAY CLEANING  
(LITTER REMOVAL)  
FORD, IROQUOIS, AND KANKAKEE COUNTIES  
C-93-070-26**

FAI RTE.	SECTION	COUNTY	TOTAL SHEETS	SHEET NO.
I-57	LITTER REMOVAL 2026-3	VARIOUS	10	1
		ILLINOIS	CONTRACT NO. 66T42	



FULL SIZE PLANS HAVE BEEN PREPARED USING STANDARD ENGINEERING SCALES. REDUCED SIZED PLANS WILL NOT CONFORM TO STANDARD SCALES. IN MAKING MEASUREMENTS ON REDUCED PLANS, THE ABOVE SCALES MAY BE USED.

**J.U.L.I.E.**  
JOINT UTILITY LOCATION INFORMATION FOR EXCAVATION  
1-800-892-0123  
OR 811

**PROJECT ENGINEER: JUNIOR SENAT  
UNIT CHIEF: OLADELE POPOOLA  
DISTRICT 3 PHONE (815) 434-6131  
CONTRACT NO. 66T42**

STATE OF ILLINOIS  
DEPARTMENT OF TRANSPORTATION  
March 19, 26  
SUBMITTED *Trisha Thompson* 20  
REGIONAL ENGINEER  
May 8, 26  
ENGINEER OF DESIGN AND ENVIRONMENT  
May 8, 26  
DIRECTOR OF HIGHWAYS PROJECT IMPLEMENTATION

**PRINTED BY THE AUTHORITY  
OF THE STATE OF ILLINOIS**

## GENERAL NOTES

NO WORK WILL BE ALLOWED DURING ANY LEGAL HOLIDAY PERIOD AS DEFINED BY ARTICLE 107.09 OF THE STANDARD SPECIFICATIONS FOR ROAD AND BRIDGE CONSTRUCTION ADOPTED JANUARY 1, 2022

ALL SHOULDER CLOSURES SHALL BE IMMEDIATELY REMOVED DURING ALL ADVERSE WEATHER CONDITIONS WITHOUT EXCEPTIONS. THIS INCLUDES BUT NOT LIMITED TO RAIN, WET ROAD SURFACE (SPRAY FROM TIRES), MIST, DRIZZLE SLEET, SNOW, FOG, OR ANY OTHER CIRCUMSTANCES DETERMINED UNSAFE BY THE ENGINEER. THE CONTRACTOR SHALL IMPLEMENT THIS CONTRACT REQUIREMENT IMMEDIATELY WITHOUT WAITING FOR DEPARTMENT INSTRUCTIONS.

NO NIGHTTIME WORK WILL BE ALLOWED ON THIS CONTRACT.

ALL EXCAVATED MATERIAL, WHICH INCLUDES DIGGING OR GRADING OF ANY SOIL OR FILL MATERIAL, WITH THE EXCEPTION OF AGGREGATE FILLS, MUST BE INCORPORATED WITHIN THE IDOT RIGHT OF WAY.

ADDITIONAL CONSTRUCTION PROJECTS MAY BE UNDER CONTRACT WITHIN OR NEAR THE LIMITS OF THIS PROJECT WHEN IT IS IN FORCE. THE CONTRACTOR FOR THIS PROJECT SHALL COOPERATE WITH THE CONTRACTORS ON THE OTHER PROJECTS ACCORDING TO ARTICLE 105.08 OF THE STANDARD SPECIFICATIONS. CONTRACTS ANTICIPATED TO BE IN THE VICINITY OF THIS CONTRACT ARE: 66K39, 66M23, 66M80, 66F94, AND 66H59.

## COMMITEMENTS

NONE

STATE OF ILLINOIS  
DEPARTMENT OF TRANSPORTATION  
DISTRICT THREE  
AS BUILT INFORMATION

\_\_\_\_\_  
SUPERVISING CONSTRUCTION FIELD ENGINEER

\_\_\_\_\_  
RESIDENT ENGINEER / TECHNICIAN

START & END DATES  
OF CONSTRUCTION:

INSPECTORS :

\_\_\_\_\_  
\_\_\_\_\_  
\_\_\_\_\_

STATE OF ILLINOIS  
DEPARTMENT OF TRANSPORTATION

GENERAL NOTES

SCALE: NO TO SCALE | SHEET 2 OF 10 SHEETS | STA. N/A TO STA. N/A

FAI RTE.	SECTION	COUNTY	TOTAL SHEETS	SHEET NO.
I-57	LITTER REMOVAL 2026-3	VARIOUS	10	2
			CONTRACT NO. 66T42	

ILLINOIS | FED. AID PROJECT

USER NAME = Katoska.Simball	DESIGNED - KS	REVISED -
	DRAWN - KS	REVISED -
	CHECKED - JS	REVISED -
PLOT DATE = 2/5/2026	DATE -	REVISED -

CODE NO.	ITEM	UNIT	TOTAL QUANTITY	CONSTRUCTION CODE		
				100% STATE FORD CO.	100% STATE IROQUOIS CO.	100% STATE KANKAKEE CO.
				ROADWAY	ROADWAY	ROADWAY
				0044	0044	0044
				NONE	NONE	NONE
67100100	MOBILIZATION	L SUM	1	0.2	0.45	0.35
X0326643	LITTER PICKING	MILE	152.30	14.15	83.85	54.30

MODEL: Default  
FILE NAME: c:\p\work\vw\illinois.gov\_katoska.simball@illinois.gov\d085272666T42.dgn

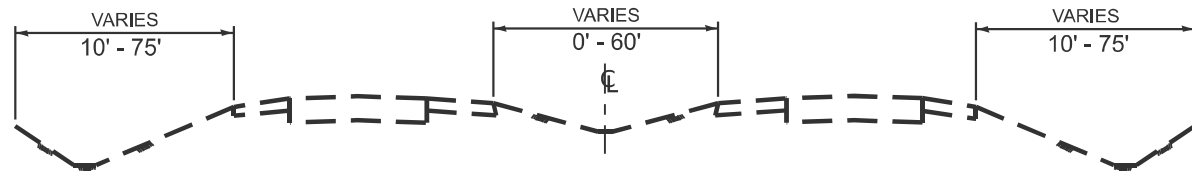
USER NAME = Katoska,Simball	DESIGNED - KS	REVISED -
	DRAWN - KS	REVISED -
	CHECKED - JS	REVISED -
PLOT DATE = 1/27/2026	DATE -	REVISED -

**STATE OF ILLINOIS  
DEPARTMENT OF TRANSPORTATION**

**SUMMARY OF QUANTITIES**

SCALE: NO TO SCALE SHEET 3 OF 10 SHEETS STA. N/A TO STA. N/A

F.A.I. RTE.	SECTION	COUNTY	TOTAL SHEETS	SHEET NO.
I-57	LITTER REMOVAL 2026-3	VARIOUS	10	3
ILLINOIS FED. AID PROJECT			CONTRACT NO. 66T42	



**TYPICAL SECTION NO. 1**

**FORD COUNTY**

I-57 MAINLINE - M.M. 257.080 TO M.M. 263.51

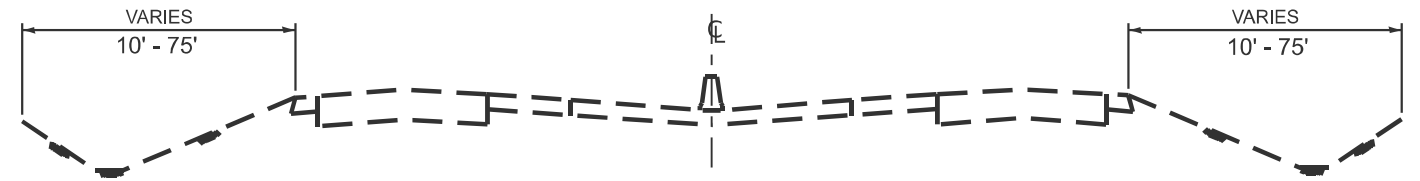
**IROQUOIS COUNTY**

I-57 MAINLINE - M.M. 263.51 TO M.M. 301.97

**KANKAKEE COUNTY**

I-57 MAINLINE - M.M. 301.97 TO M.M. 314.80

I-57 MAINLINE - M.M. 316.60 TO M.M. 325.04



**TYPICAL SECTION NO. 2**

**KANKAKEE COUNTY**

I-57 MAINLINE - M.M. 314.80 TO M.M. 316.60

MODEL: Default  
FILE NAME: c:\pwworking\illinois.gov\_katoska.simball@illinois.gov\d085272666T42.dgn

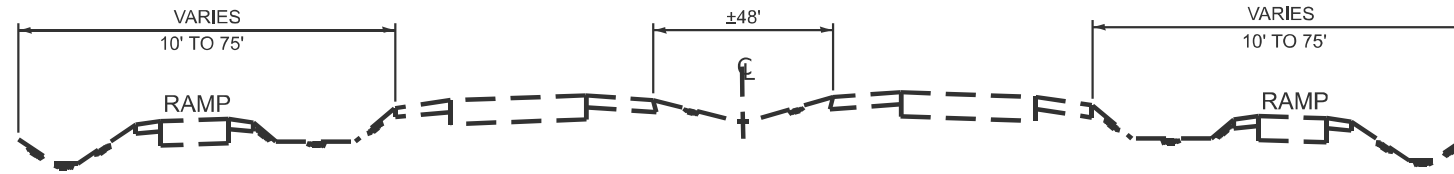
USER NAME = Katoska,Simball	DESIGNED - KS	REVISED -
	DRAWN - KS	REVISED -
	CHECKED - JS	REVISED -
PLOT DATE = 2/5/2026	DATE -	REVISED -

**STATE OF ILLINOIS  
DEPARTMENT OF TRANSPORTATION**

**TYPICAL SECTIONS  
MAINLINE PAVEMENT**

SCALE: NO TO SCALE SHEET 4 OF 10 SHEETS STA. N/A TO STA. N/A

F.A.I RTE.	SECTION	COUNTY	TOTAL SHEETS	SHEET NO.
I-57	LITTER REMOVAL 2026-3	VARIOUS	10	4
ILLINOIS FED.AID PROJECT			CONTRACT NO. 66T42	



**TYPICAL SECTION NO. 3**

**FORD COUNTY**

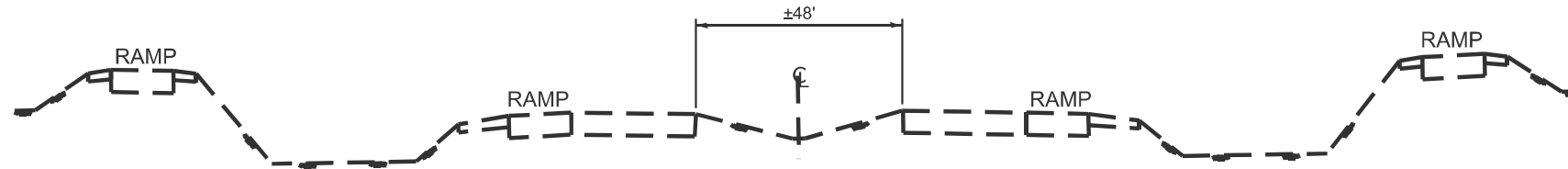
**I-57  
IL 9**

**IROQUOIS COUNTY**

**I-57  
BUCKLEY RD.  
IL 54  
US 24  
IL 116  
CLIFTON RD.  
CHEBANSE RD.**

**KANKAKEE COUNTY**

**I-57  
US 45/52  
IL 50  
BOURBONNAIS PKWY  
MANTENO RD.**



**TYPICAL SECTION NO. 4**

**KANKAKEE COUNTY**

**I-57  
US 45/52  
IL 17**

MODEL: Default  
FILE NAME: c:\pwworking\illinois.gov\katoska.simball@illinois.gov\d085272666T42.dgn

USER NAME = Katoska,Simball	DESIGNED - KS	REVISED -
	DRAWN - KS	REVISED -
	CHECKED - JS	REVISED -
PLOT DATE = 1/27/2026	DATE -	REVISED -

**STATE OF ILLINOIS  
DEPARTMENT OF TRANSPORTATION**

**TYPICAL SECTIONS  
RAMPS**

SCALE: NO TO SCALE SHEET 5 OF 10 SHEETS STA. N/A TO STA. N/A

F.A.I. RTE.	SECTION	COUNTY	TOTAL SHEETS	SHEET NO.
I-57	LITTER REMOVAL 2026-3	VARIOUS	10	5
			CONTRACT NO. 66T42	
		ILLINOIS	FED. AID PROJECT	

**FORD COUNTY I-57**

**CHAMPAIGN (M.M. 257.08) TO IROQUOIS COUNTY LINE (M.M. 263.51)**

NORTHBOUND MAINLINE	M.M.	MILES
CHAMPAIGN COUNTY LINE TO	257.08	3.99
IL ROUTE 9	261.07	
IL ROUTE 9 TO	261.07	2.44
IROQUOIS COUNTY LIE	263.51	
NORTHBOUND TOTAL		6.43

SOUTHBOUND MAINLINE	M.M.	MILES
IROQUOIS COUNTY LINE	263.51	2.44
IL ROUTE 9	261.07	
IL ROUTE 9 TO	261.07	3.99
CHAMPAIGN COUNTY LINE	257.08	
SOUTHBOUND TOTAL		6.43

RAMPS		
IL ROUTE 9	NORTHBOUND EXIT	0.36
	NORTHBOUND ENTRANCE	0.32
(EXIT 261)	SOUTHBOUND EXIT	0.29
	SOUTHBOUND ENTRANCE	0.32
RAMP TOTAL		1.29

MAINLINE TOTAL MILES	12.86
RAMP TOTAL MILES	1.29
<b>TOTAL MILAGE</b>	<b>14.15</b>

**IROQUOIS COUNTY I-57**

**FORD COUNTY LINE (M.M. 263.51) TO KANKAKEE COUNTY LINE (M.M. 301.97)**

NORTHBOUND MAINLINE	M.M.	MILES
FORD COUNTY LINE TO	263.51	8.58
BUCKLEY RD.	272.09	
BUCKLEY RD. TO	272.09	8.06
IL ROUTE 54	280.15	
IL ROUTE 54 TO	280.15	2.90
US ROUTE 24	283.05	
US ROUTE 24 TO	283.05	9.81
IL ROUTE 116	292.86	
IL ROUTE 116 TO	292.86	3.81
CLIFTON RD.	296.67	
CLIFTON RD. TO	296.67	5.30
KANKAKEE COUNTY LINE (CHEBANSE)	301.97	
NORTHBOUND TOTAL		38.46

SOUTHBOUND MAINLINE	M.M.	MILES
KANKAKEE COUNTY LINE (CHEBANSE)	301.97	5.30
TO CLIFTON RD.	296.67	
CLIFTON RD. TO	296.67	3.81
IL ROUTE 116	292.86	
IL ROUTE 116 TO	292.86	9.81
US ROUTE 24	283.05	
US ROUTE 24 TO	283.05	2.90
IL ROUTE 54	280.15	
IL ROUTE 54 TO	280.15	8.06
BUCKLEY RD.	272.09	
BUCKLEY RD. TO	272.09	8.58
FORD COUNTY LINE TO	263.51	
SOUTHBOUND TOTAL		38.46

RAMPS		
BUCKLEY RD.	NORTHBOUND EXIT	0.36
	NORTHBOUND ENTRANCE	0.35
(EXIT 272)	SOUTHBOUND EXIT	0.32
	SOUTHBOUND ENTRANCE	0.35
IL ROUTE 54	NORTHBOUND EXIT	0.30
	NORTHBOUND ENTRANCE	0.32
(EXIT 280)	SOUTHBOUND EXIT	0.29
	SOUTHBOUND ENTRANCE	0.30
US ROUTE 24	NORTHBOUND EXIT	0.30
	NORTHBOUND ENTRANCE	0.30
(EXIT 283)	SOUTHBOUND EXIT	0.30
	SOUTHBOUND ENTRANCE	0.29
IL ROUTE 116	NORTHBOUND EXIT	0.32
	NORTHBOUND ENTRANCE	0.25
(EXIT 293)	SOUTHBOUND EXIT	0.33
	SOUTHBOUND ENTRANCE	0.26
CLIFTON RD.	NORTHBOUND EXIT	0.27
	NORTHBOUND ENTRANCE	0.29
(EXIT 297)	SOUTHBOUND EXIT	0.25
	SOUTHBOUND ENTRANCE	0.27
CHBANSE RD.	NORTHBOUND EXIT	0.26
	NORTHBOUND ENTRANCE	0.18
(EXIT 302)	SOUTHBOUND EXIT	0.22
	SOUTHBOUND ENTRANCE	0.25
TOTAL RAMPS		6.93

MAINLINE TOTAL MILES	76.92
RAMP TOTAL MILES	6.93
<b>TOTAL MILAGE</b>	<b>83.85</b>

MODEL: Default  
FILE NAME: c:\p\work\pww\illinois.gov\_katoska.simb\illinois.gov\085272666142.dgn

USER NAME = Katoska.Simb	DESIGNED - KS	REVISED -
	DRAWN - KS	REVISED -
	CHECKED - JS	REVISED -
PLOT DATE = 1/27/2026	DATE -	REVISED -

**STATE OF ILLINOIS  
DEPARTMENT OF TRANSPORTATION**

**SCHEDULES  
FORD AND IROQUOIS COUNTIES**

SCALE: NO TO SCALE SHEET 6 OF 10 SHEETS STA. N/A TO STA. N/A

F.A.I. RTE.	SECTION	COUNTY	TOTAL SHEETS	SHEET NO.
I-57	LITTER REMOVAL 2026-3	VARIOUS	10	6
CONTRACT NO. 66T42			ILLINOIS FED. AID PROJECT	

**KANKAKEE COUNTY I-57**

**IROQUOIS COUNTY LINE (M.M. 301.97) TO WILL COUNTY LINE (M.M. 325.04)**

<b>NORTHBOUND MAINLINE</b>	<b>M.M.</b>	<b>MILES</b>
IROQUOIS COUNTY LINE TO	301.97	5.65
US ROUTE 45/52	307.62	
US ROUTE 45/52 TO	307.62	4.22
IL ROUTE 17	311.84	
IL ROUTE 17 TO	311.84	3.65
IL ROUTE 50	315.49	
IL ROUTE 50 TO	315.49	3.09
BOURBONNAIS PKWY	318.58	
BOURBONNAIS PKWY TO	318.58	3.15
MANTENO RD.	321.73	
MANTENO RD. TO	321.73	3.31
WILL COUNTY LINE	325.04	
<b>NORTHBOUND TOTAL</b>		<b>23.07</b>

<b>SOUTHBOUND MAINLINE</b>	<b>M.M.</b>	<b>MILES</b>
WILL COUNTY LINE	325.04	3.31
MANTENO RD.	321.73	
MANTENO RD. TO	321.73	3.15
BOURBONNAIS PKWY	318.58	
BOURBONNAIS PKWY TO	318.58	3.09
IL ROUTE 50	315.49	
IL ROUTE 50 TO	315.49	3.65
IL ROUTE 17	311.84	
IL ROUTE 17 TO	311.84	4.22
US ROUTE 45/52	307.62	
US ROUTE 45/52 TO	307.62	5.65
IROQUOIS COUNTY LINE TO	301.97	
<b>SOUTHBOUND TOTAL</b>		<b>23.07</b>

<b>RAMPS</b>		
US ROUTE 45/52	NORTHBOUND EXIT	0.27
	NORTHBOUIND ENTRANCE	0.31
(EXIT 272)	SOUTHBOUND EXIT	0.29
	SOUTHBOUND ENTRANCE	0.32
IL ROUTE 17	NORTHBOUND EXIT	0.34
	NORTHBOUIND ENTRANCE	0.72
(EXIT 280)	SOUTHBOUND EXIT	0.26
	SOUTHBOUND ENTRANCE	0.57
IL ROUTE 50	NORTHBOUND EXIT	0.42
	NORTHBOUIND ENTRANCE	0.22
(EXIT 283)	SOUTHBOUND EXIT	0.35
	SOUTHBOUND ENTRANCE	0.25
BOURBONNAIS PKWY	NORTHBOUND EXIT	0.69
	NORTHBOUIND ENTRANCE	0.74
(EXIT 293)	SOUTHBOUND EXIT	0.73
	SOUTHBOUND ENTRANCE	0.71
MANTENO RD.	NORTHBOUND EXIT	0.30
	NORTHBOUIND ENTRANCE	0.19
(EXIT 283)	SOUTHBOUND EXIT	0.29
	SOUTHBOUND ENTRANCE	0.19
<b>TOTAL RAMPS</b>		<b>8.16</b>

MAINLINE TOTAL MILES	46.14
RAMP TOTAL MILES	8.16
<b>TOTAL MILAGE</b>	<b>54.30</b>

MODEL: Default  
FILE NAME: c:\pwworking\illinois.gov\_katoska.simball@illinois.gov\d085272668T42.dgn

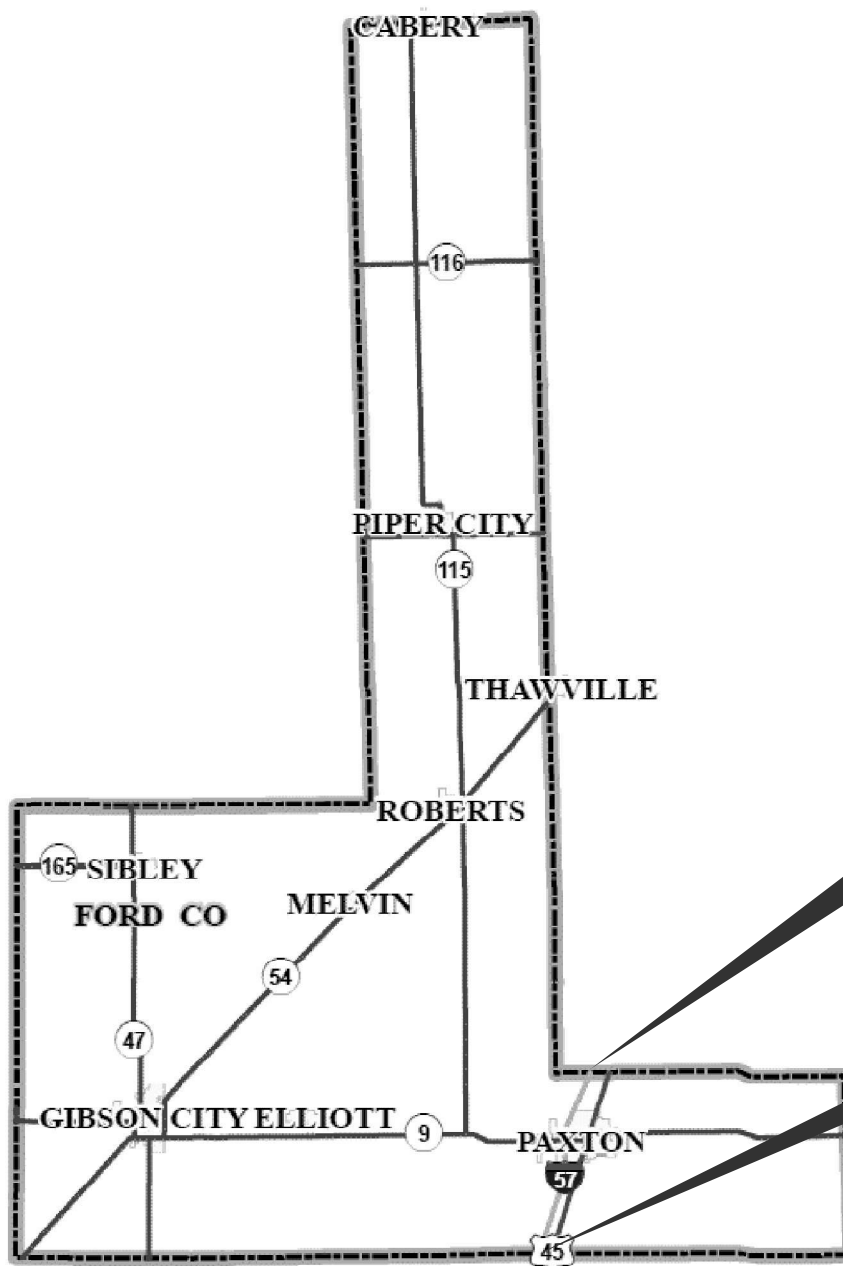
USER NAME = Katoska,Simball	DESIGNED - KS	REVISED -
	DRAWN - KS	REVISED -
	CHECKED - JS	REVISED -
PLOT DATE = 1/27/2026	DATE -	REVISED -

**STATE OF ILLINOIS  
DEPARTMENT OF TRANSPORTATION**

**SCHEDULES  
KANKAKEE COUNTY**

SCALE: NO TO SCALE SHEET 7 OF 10 SHEETS STA. N/A TO STA. N/A

F.A.I RTE.	SECTION	COUNTY	TOTAL SHEETS	SHEET NO.
I-57	LITTER REMOVAL 2026-3	VARIOUS	10	7
CONTRACT NO. 66T42				
ILLINOIS FED. AID PROJECT				



**PROJECT LIMITS**  
**F.A.I. 57 (I-57)**  
**IROQUOIS COUNTY LINE**  
**M.M. 263.51**

**PROJECT LIMITS**  
**F.A.I. 57 (I-57)**  
**CHAMPAIGN COUNTY LINE**  
**M.M. 257.08**

MODEL: Default  
 FILE NAME: c:\p\work\pww\illinois.gov\_katoska.simball@illinois.gov\d085272666T42.dgn

USER NAME = Katoska,Simball	DESIGNED - KS	REVISED -
	DRAWN - KS	REVISED -
	CHECKED - JS	REVISED -
PLOT DATE = 2/5/2026	DATE -	REVISED -

**STATE OF ILLINOIS**  
**DEPARTMENT OF TRANSPORTATION**

**FORD COUNTY**  
**LITTER REMOVAL**

SCALE: NO TO SCALE SHEET 8 OF 10 SHEETS STA. N/A TO STA. N/A

F.A.I. RTE.	SECTION	COUNTY	TOTAL SHEETS	SHEET NO.
I-57	LITTER REMOVAL 2026-3	VARIOUS	10	8
ILLINOIS FED. AID PROJECT			CONTRACT NO. 66T42	

**PROJECT LIMITS**  
**F.A.I. 57 (I-57)**  
**KANKAKEE COUNTY LINE**  
**M.M. 301.97**

**PROJECT LIMITS**  
**F.A.I. 57 (I-57)**  
**FORD COUNTY LINE**  
**M.M. 263.51**



MODEL: Default  
 FILE NAME: c:\pwworking\illinois.gov\_katoska.simballe@illinois.gov\d085272666T42.dgn

USER NAME = Katoska.Simballe	DESIGNED - KS	REVISED -
	DRAWN - KS	REVISED -
	CHECKED - JS	REVISED -
PLOT DATE = 1/27/2026	DATE -	REVISED -

**STATE OF ILLINOIS  
 DEPARTMENT OF TRANSPORTATION**

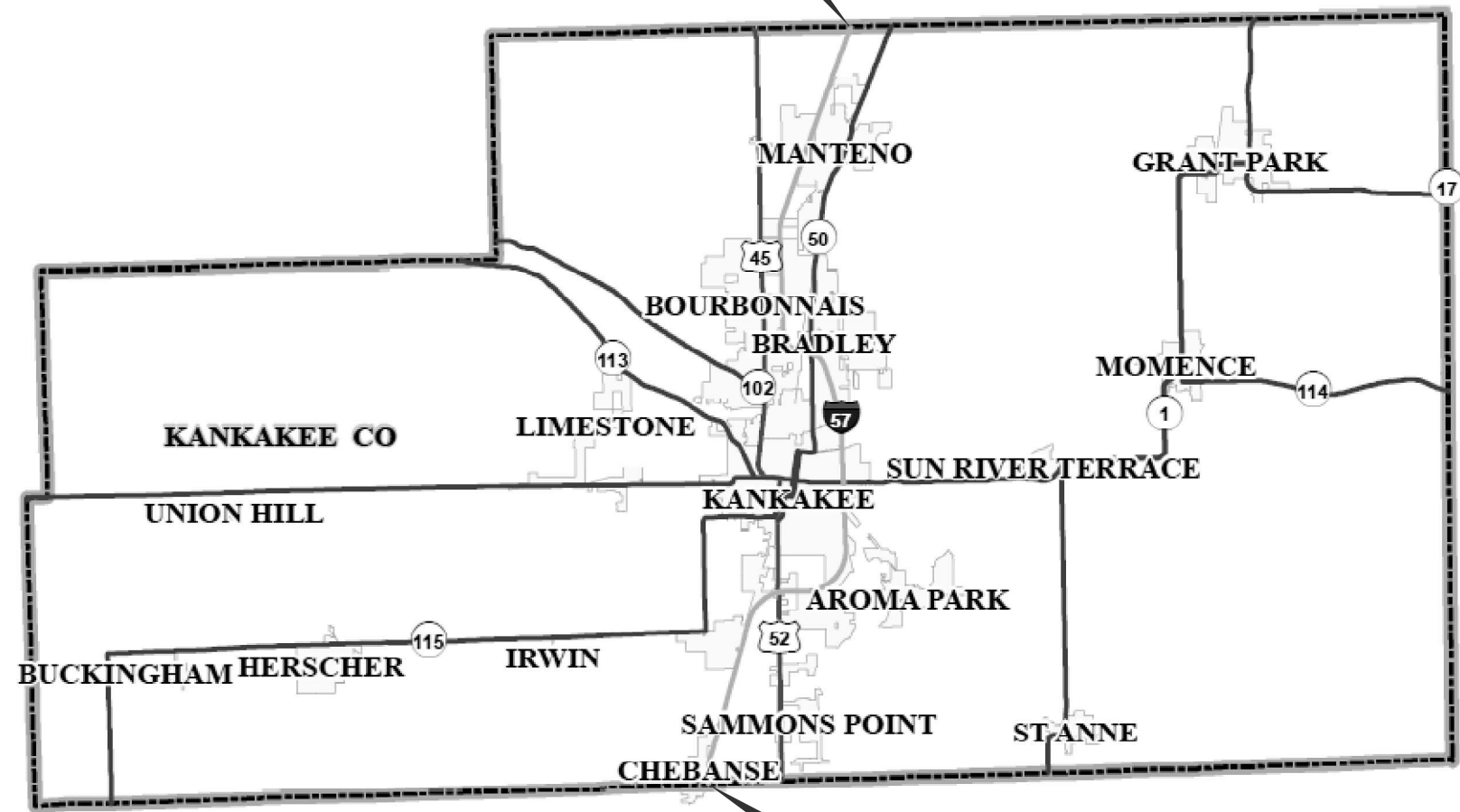
**IROQUOIS COUNTY  
 LITTER REMOVAL**

SCALE: NO TO SCALE SHEET 9 OF 10 SHEETS STA. N/A TO STA. N/A

F.A.I. RTE.	SECTION	COUNTY	TOTAL SHEETS	SHEET NO.
I-57	LITTER REMOVAL 2026-3	VARIOUS	10	9
ILLINOIS FED. AID PROJECT			CONTRACT NO. 66T42	

**PROJECT LIMITS**

F.A.I. 57 (I-57)  
WILL COUNTY LINE  
M.M. 325.44



**PROJECT LIMITS**

F.A.I. 57 (I-57)  
IROQUOIS COUNTY LINE  
M.M. 301.97

MODEL: Default  
FILE NAME: c:\p\work\view\illinois.gov\_kataska.simball@illinois.gov\d085272666T42.dgn

USER NAME = Kataska,Simball	DESIGNED - KS	REVISED -
	DRAWN - KS	REVISED -
	CHECKED - JS	REVISED -
PLOT DATE = 1/27/2026	DATE -	REVISED -

STATE OF ILLINOIS  
DEPARTMENT OF TRANSPORTATION

KANKAKEE COUNTY  
LITTER REMOVAL

SCALE: NO TO SCALE SHEET 10 OF 10 SHEETS STA. N/A TO STA. N/A

F.A.I. RTE.	SECTION	COUNTY	TOTAL SHEETS	SHEET NO.
I-57	LITTER REMOVAL 2026-3	VARIOUS	10	10
CONTRACT NO. 66T42				
ILLINOIS		FED. AID PROJECT		