

STATE OF ILLINOIS DEPARTMENT OF TRANSPORTATION

FAP RTE.	SECTION	COUNTY	TOTAL SHEETS	SHEET NO.
VAR.	D4 TRAFFIC SIGNALS 2026	*	13	1
		ILLINOIS	CONTRACT NO. 68K85	

* PEORIA, TAZEWELL, AND WARREN

INDEX OF SHEETS:

SEE SHEET 2 FOR INDEX OF SHEETS

HIGHWAY STANDARDS:

SEE SHEET 2 FOR A LIST OF APPLICABLE HIGHWAY STANDARDS

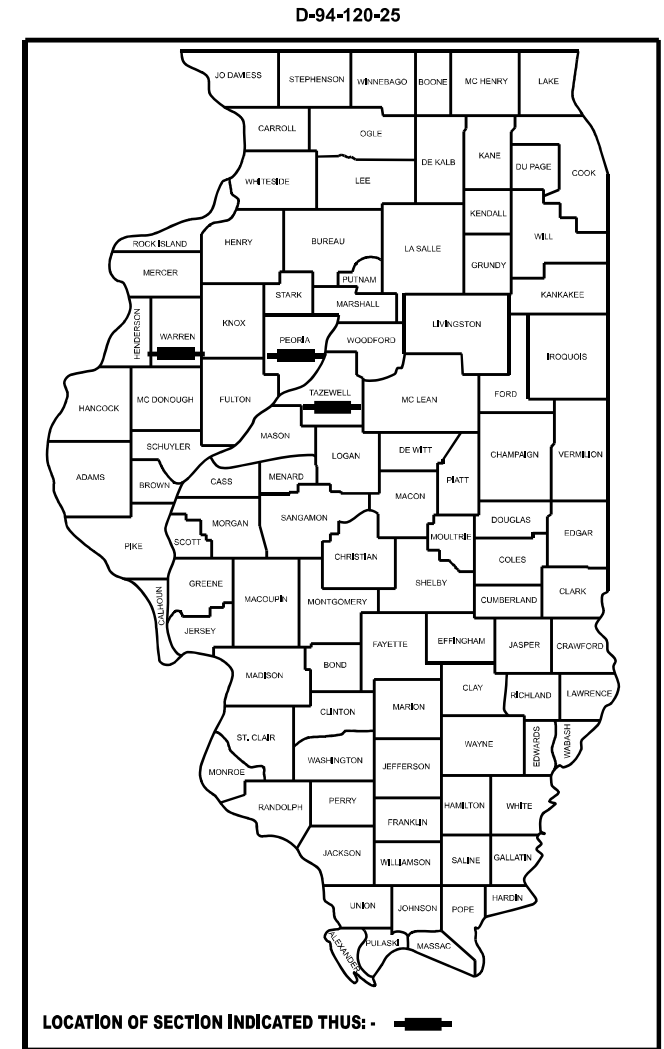
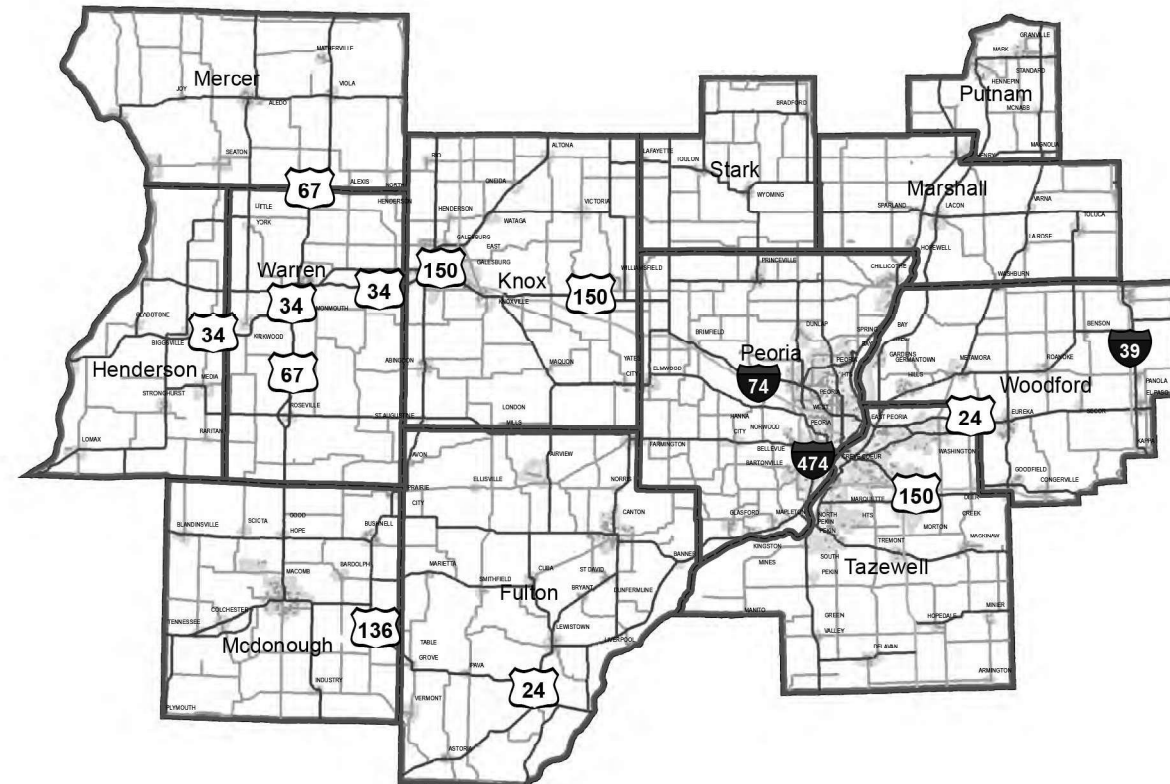
PROPOSED HIGHWAY PLANS

VARIOUS ROUTES D4 TRAFFIC SIGNALS 2026 PEORIA, TAZEWELL, AND WARREN COUNTIES

C-94-134-25

PROJECT DESCRIPTION:

REPLACEMENT OF TRAFFIC SIGNAL HEADS AND VEHICLE DETECTION AT VARIOUS LOCATIONS IN PEORIA, EAST PEORIA, WASHINGTON, AND MONMOUTH.



J.U.L.I.E.
JOINT UTILITY LOCATION INFORMATION FOR EXCAVATION
1-800-892-0123
OR 811

PROJECT ENGINEER TREVOR HANSON 309-671-4466
PROJECT MANAGER BENJAMIN TELLEFSON 309-671-4477
CATALOG NO. 036724-00D
CONTRACT NO. 68K85

STATE OF ILLINOIS
DEPARTMENT OF TRANSPORTATION

SUBMITTED Mar 20 2026
Kensil A. Garnett RSD
REGIONAL ENGINEER

May 8 2026
[Signature]
ENGINEER OF DESIGN AND ENVIRONMENT

May 8 2026
[Signature]
DIRECTOR OF HIGHWAYS PROJECT IMPLEMENTATION

**PRINTED BY THE AUTHORITY
OF THE STATE OF ILLINOIS**

NO COMMITMENTS HAVE BEEN MADE IN CONJUNCTION WITH THIS PROJECT.

INDEX OF SHEETS	
SHEET	DESCRIPTION
1	COVER SHEET
2	COMMITMENTS, INDEX OF SHEETS, HIGHWAY STANDARDS, & TRAFFIC SIGNAL CONSTRUCTION STAGING NOTES
3	CONSTRUCTION NOTES
4	SUMMARY OF QUANTITIES
5	SCHEDULE OF QUANTITIES
6	PROPOSED TRAFFIC SIGNAL IMPROVEMENTS - IL 40 (KNOXVILLE) & GLEN - PEORIA
7	PROPOSED TRAFFIC SIGNAL IMPROVEMENTS - IL 40 (KNOXVILLE) & LAKE - PEORIA
8	PROPOSED TRAFFIC SIGNAL IMPROVEMENTS - IL 40 (KNOXVILLE) & NEBRASKA - PEORIA
9	PROPOSED TRAFFIC SIGNAL IMPROVEMENTS - US 150 (WAR MEMORIAL) & PROSPECT - PEORIA
10	PROPOSED TRAFFIC SIGNAL IMPROVEMENTS - US 150 (WAR MEMORIAL) & SHERIDAN - PEORIA
11	PROPOSED TRAFFIC SIGNAL IMPROVEMENTS - US 150 (WAR MEMORIAL) & UNIVERSITY - PEORIA
12	PROPOSED TRAFFIC SIGNAL IMPROVEMENTS - US 150 (WAR MEMORIAL) & WISCONSIN - PEORIA
13	PROPOSED TRAFFIC SIGNAL IMPROVEMENTS - WASHINGTON & VETERANS/TAYLOR - EAST PEORIA

HIGHWAY STANDARDS	
STANDARD	DESCRIPTION
000001-09	STANDARD SYMBOLS, ABBREVIATIONS AND PATTERNS
001006	DECIMAL OF AN INCH & FOOT
701001-02	OFF-ROAD OPERATIONS, 2L, 2W, MORE THAN 15' AWAY
701006-05	OFF-ROAD OPERATIONS, 2L, 2W, 15' TO 24" FROM PAVEMENT EDGE
701101-05	OFF-ROAD OPERATIONS, MULTILANE, 15' TO 24" FROM PAVEMENT EDGE
701106-02	OFF-ROAD OPERATIONS, MULTILANE, MORE THAN 15' AWAY
701601-09	URBAN LANE CLOSURE, MULTILANE, 1W OR 2W WITH NONTRAVERSABLE MEDIAN
701701-10	URBAN LANE CLOSURE, MULTILANE INTERSECTION
701801-06	SIDEWALK, CORNER OR CROSSWALK CLOSURE
701901-11	TRAFFIC CONTROL DEVICES
857001-01	STANDARD PHASE DESIGNATION DIAGRAMS AND PHASE SEQUENCES
873001-02	TRAFFIC SIGNAL GROUNDING & BONDING
880006-01	TRAFFIC SIGNAL MOUNTING DETAILS

TRAFFIC SIGNAL CONSTRUCTION STAGING NOTES

1.	THE CONTRACTOR WILL BE ALLOWED TO PLACE THE INTERSECTION INTO ALL-RED FLASH MODE TO FACILITATE THE INSTALLATION OF THE PROPOSED TRAFFIC SIGNAL MAST ARMS, POSTS, SIGNAL HEADS, ELECTRICAL CABLE AND OTHER COMPONENTS.
2.	THE CONTRACTOR SHALL FURNISH AND INSTALL A MINIMUM OF TWO STOP SIGNS PER APPROACH WHEN THE INTERSECTION IS OPERATING IN ALL-RED FLASH MODE. THE TRAFFIC SIGNALS MAY BE PLACED INTO ALL-RED FLASH MODE BETWEEN THE HOURS OF 8:30AM AND 3:00PM ONLY.
3.	THE CONTRACTOR SHALL RESTORE THE TRAFFIC SIGNALS TO NORMAL OPERATION AT ALL OTHER TIMES, UNLESS SPECIFICALLY DIRECTED OTHERWISE BY THE ENGINEER.
4.	THE CONTRACTOR WILL BE ALLOWED TO PLACE THE INTERSECTION INTO FLASH FOR A MAXIMUM OF FIVE DAYS PER EACH LOCATION.
5.	THE CONTRACTOR WILL BE ALLOWED TO MAKE TEMPORARY SPLICES AS NEEDED TO FACILITATE THE INSTALLATION OF THE PROPOSED TRAFFIC SIGNAL EQUIPMENT.
6.	ALL COSTS (LABOR, MATERIALS, AND EQUIPMENT) ASSOCIATED WITH THESE REQUIREMENTS SHALL BE INCLUDED IN THE CONTRACT BID PRICE FOR THE PAY ITEM "TRAFFIC CONTROL AND PROTECTION, (SPECIAL)." THERE WILL BE NO ADDITIONAL COMPENSATION FOR ITEMS REQUIRED TO IMPLEMENT STAGING, INCLUDING, BUT NOT LIMITED TO, TEMPORARY CABLE SPLICES, TEMPORARY TRAFFIC POSTS, AND PREMIUM TIME HOURS.

* PEORIA, TAZEWELL, AND WARREN

MODEL: Default
FILE NAME: c:\pwworkspace\hanson\10939864\SIGNALS Complete.dgn

USER NAME = trevor.hanson	DESIGNED -	REVISED -
	DRAWN -	REVISED -
	CHECKED -	REVISED -
PLOT DATE = 1/7/2025	DATE -	REVISED -

**STATE OF ILLINOIS
DEPARTMENT OF TRANSPORTATION**

**COMMITMENTS, INDEX OF SHEETS, HIGHWAY STANDARDS,
& TRAFFIC SIGNAL CONSTRUCTION STAGING NOTES**

SCALE: SHEET OF SHEETS STA. TO STA.

F.A.P. RTE.	SECTION	COUNTY	TOTAL SHEETS	SHEET NO.
VAR.	D4 TRAFFIC SIGNALS 2026	*	13	2
CONTRACT NO. 68K85				
ILLINOIS FED. AID PROJECT				

CONSTRUCTION NOTES

1.	THE LOCATION OF ALL UTILITIES AND PRIVATELY OWNED FACILITIES SHALL BE FIELD VERIFIED BY THE CONTRACTOR PRIOR TO THE INSTALLATION OF ANY COMPONENTS.
2.	THE CONTRACTOR SHALL BE RESPONSIBLE FOR LOCATING EXISTING IDOT ELECTRICAL FACILITIES AT HIS/HER OWN EXPENSE IF REQUIRED. THE CONTRACTOR SHALL ALSO BE LIABLE FOR ANY DAMAGE TO IDOT FACILITIES RESULTING FROM INACCURATE LOCATING.
3.	ELECTRICAL WORK SHALL CONFORM WITH NATIONAL, STATE, AND LOCAL CODES.
4.	ALL TRAFFIC SIGNAL SECTIONS SHALL HAVE 12" SINGLE LED LENSES.
5.	THE RED SECTIONS OF THE SIGNAL HEADS SHARING THE SAME MAST ARM SHALL BE LEVEL WITH ONE ANOTHER AND MAINTAIN A 16 FT. MINIMUM CLEARANCE FROM THE HIGHEST POINT OF THE ROADWAY TO BOTTOM OF THE SIGNAL BACKPLATE.
6.	ALL TRAFFIC SIGNAL HEAD BRACKETS ARE TO BE GALVANIZED STEEL WITH A NATURAL FINISH.
7.	THE CONTRACTOR SHALL PROVIDE ELECTRICAL CABLE SLACK IN ACCORDANCE WITH ARTICLE 873.03.
8.	ELECTRICAL CABLE WILL BE MEASURED FOR PAYMENT IN ACCORDANCE WITH ARTICLE 873.04.
9.	THE CONTRACTOR SHALL VERIFY FIELD CONDITIONS PRIOR TO BIDDING. THERE WILL BE NO ADDITIONAL COMPENSATION PAID FOR CLAIMS THAT ARISE FROM A FAILURE TO FULLY INVESTIGATE EXISTING FIELD CONDITIONS.
10.	THE EXISTING TRAFFIC SIGNALS SHALL REMAIN IN OPERATION DURING THE CONSTRUCTION OF THE PROPOSED TRAFFIC SIGNALS.
11.	ANY MAINTENANCE OF EXISTING TRAFFIC SIGNALS WILL BE CONSIDERED EXTRA WORK IN ACCORDANCE WITH ARTICLE 109.04 OF THE STANDARD SPECIFICATIONS.
12.	ALL SURPLUS MATERIALS SHALL BE DISPOSED OF IN ACCORDANCE WITH ARTICLE 202.03 OF THE STANDARD SPECIFICATIONS.
13.	PRIOR TO ORDERING MATERIALS, THE CONTRACTOR SHALL VERIFY THE PROPOSED SIGNAL HEAD CONFIGURATIONS WITH THE ENGINEER OF TRAFFIC.

MODEL: Default
FILE NAME: c:\pwwork\work\hanson\0039664\SIGNALS Complete.dgn

* PEORIA, TAZEWELL, AND WARREN

USER NAME = trevor.hanson	DESIGNED -	REVISED -	STATE OF ILLINOIS DEPARTMENT OF TRANSPORTATION	CONSTRUCTION NOTES	F.A.P. RTE.	SECTION	COUNTY	TOTAL SHEETS	SHEET NO.	
	DRAWN -	REVISED -			VAR.	D4 TRAFFIC SIGNALS 2026	*	13	3	
	CHECKED -	REVISED -			CONTRACT NO. 68K85					
PLOT DATE = 1/7/2025	DATE -	REVISED -			SCALE:	SHEET	OF	SHEETS	STA.	TO STA.

SUMMARY OF QUANTITIES

ITEM NUMBER	ITEM DESCRIPTION	UNIT	TOTAL QTY.	CODE 0021	CODE 0021	CODE 0021	CODE 0021	CODE 0021
				90% STATE	90% STATE	90% STATE	100% STATE	90% STATE
				10% CITY	10% CITY	10% CITY	0% CITY	10% CITY
				PEORIA	EAST PEORIA	WASHINGTON	MONMOUTH	MONMOUTH
				TRAFFIC SIGNALS	TRAFFIC SIGNALS	TRAFFIC SIGNALS	TRAFFIC SIGNALS	TRAFFIC SIGNALS
67100100	MOBILIZATION	L SUM	1.0	0.7	0.1		0.2	
87301245	ELECTRIC CABLE IN CONDUIT, SIGNAL NO. 14 5C	FOOT	11948.5	11948.5				
87301255	ELECTRIC CABLE IN CONDUIT, SIGNAL NO. 14 7C	FOOT	15097.5	15097.5				
88040070	SIGNAL HEAD, POLYCARBONATE, LED, 1-FACE, 3-SECTION, BRACKET MOUNTED	EACH	10.0	10.0				
88040090	SIGNAL HEAD, POLYCARBONATE, LED, 1-FACE, 3-SECTION, MAST ARM MOUNTED	EACH	52.0	52.0				
88040110	SIGNAL HEAD, POLYCARBONATE, LED, 1-FACE, 4-SECTION, BRACKET MOUNTED	EACH	30.0	27.0	3.0			
88040120	SIGNAL HEAD, POLYCARBONATE, LED, 1-FACE, 4-SECTION, MAST ARM MOUNTED	EACH	25.0	25.0				
88102845	PEDESTRIAN SIGNAL HEAD, POLYCARBONATE, LED, 2-FACE, BRACKET MOUNTED WITH COUNT DOWN TIMER	EACH	28.0	28.0				
88200100	TRAFFIC SIGNAL BACKPLATE	EACH	117.0	114.0	3.0			
X7010216	TRAFFIC CONTROL AND PROTECTION, (SPECIAL)	L SUM	1.0	0.7	0.1		0.2	
X8891202	WIDE AREA VIDEO VEHICLE DETECTION SYSTEM COMPLETE	EACH	7.0	1.0	1.0	1.0	2.0	2.0
X8950114	MODIFY EXISTING CONTROLLER AND CABINET	EACH	2.0	1.0	1.0			

MODEL: Default
FILE NAME: c:\pwworking\dwight.hanson\0039664\SIGNALS Complete.dgn

* PEORIA, TAZEWELL, AND WARREN

USER NAME = trevor.hanson	DESIGNED -	REVISED -	STATE OF ILLINOIS DEPARTMENT OF TRANSPORTATION	SUMMARY OF QUANTITIES				F.A.P. RTE.	SECTION	COUNTY	TOTAL SHEETS	SHEET NO.
	DRAWN -	REVISED -						VAR.	D4 TRAFFIC SIGNALS 2026	*	13	4
	CHECKED -	REVISED -		SCALE: SHEET OF SHEETS STA. TO STA.				CONTRACT NO. 68K85				
PLOT DATE = 1/7/2025	DATE -	REVISED -						ILLINOIS FED. AID PROJECT				

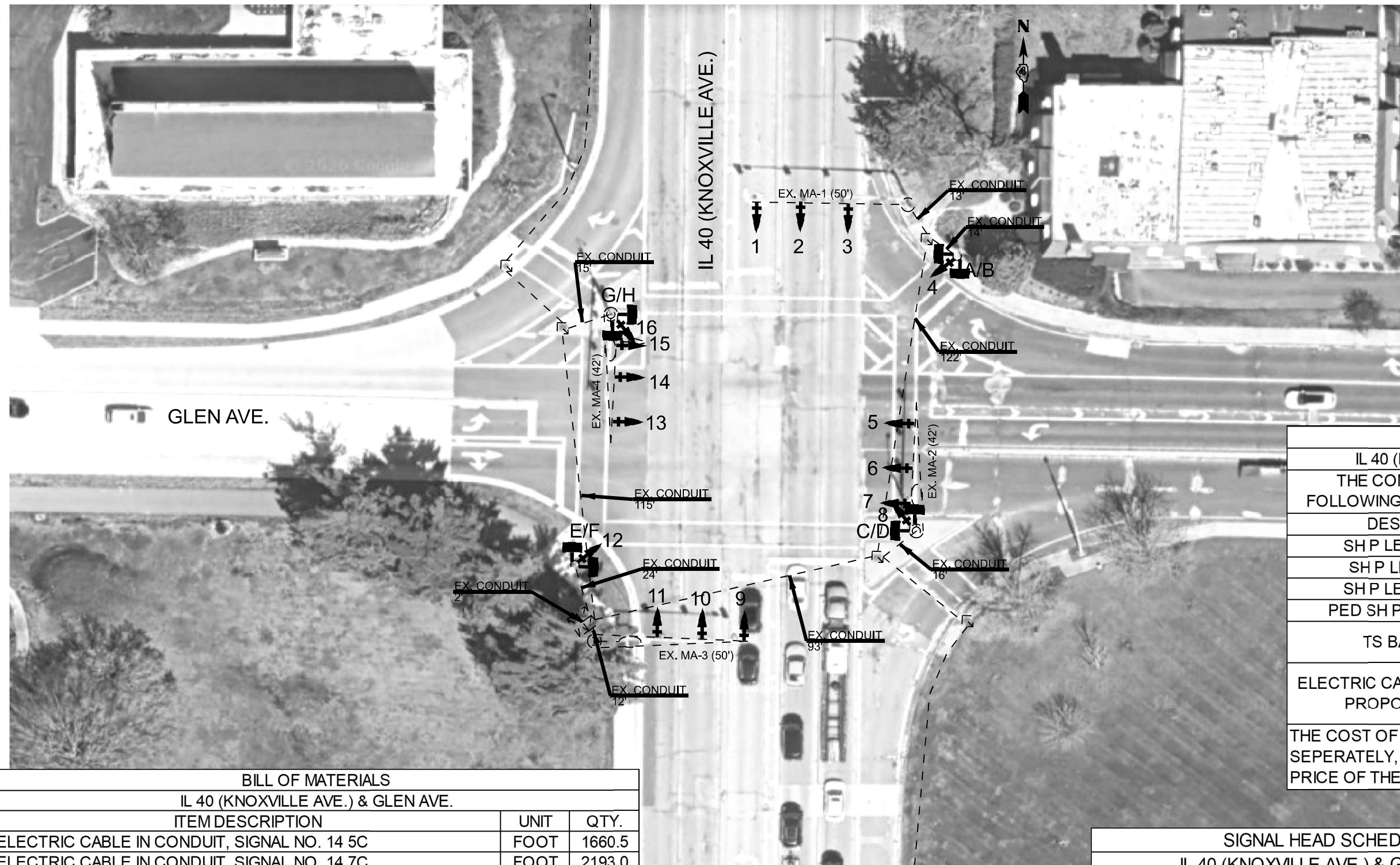
SCHEDULE OF QUANTITIES			PEORIA COUNTY							TAZEWELL COUNTY			WARREN COUNTY			
ITEM DESCRIPTION	UNT	TOTAL QTY.	PEORIA							EAST PEORIA		WASHINGTON	MONMOUTH			
			IL 40 (KNOXVILLE) & GLEN	IL 40 (KNOXVILLE) & LAKE	IL 40 (KNOXVILLE) & NEBRASKA	US 150 (WAR MEMORIAL) & PROSPECT	US 150 (WAR MEMORIAL) & SHERIDAN	US 150 (WAR MEMORIAL) & UNIVERSITY	US 150 (WAR MEMORIAL) & WISCONSIN/BOULEVARD	WASHINGTON & VETERANS/TAYLOR	IL 8 (WASHINGTON) & CARVER/JAY	BUSINESS US 24 & CUMMINGS	US 34 & US 67/ MAIN	US 34/US 67 & IL 164/ BROADWAY	US 34 & 6TH	US 34 & 11TH
MOBILIZATION	L SUM	1.0	0.1	0.1	0.1	0.1	0.1	0.1	0.1	0.1			0.1	0.1		
ELECTRIC CABLE IN CONDUIT, SIGNAL NO. 14 5C	FOOT	11948.5	1660.5	1236.5	1029.0	1666.0	1851.5	3507.0	998.0							
ELECTRIC CABLE IN CONDUIT, SIGNAL NO. 14 7C	FOOT	15097.5	2193.0	2334.0	1870.0	2470.0	2758.0	2050.0	1422.5							
SIGNAL HEAD, POLYCARBONATE, LED, 1-FACE, 3-SECTION, BRACKET MOUNTED	EACH	10.0		2.0	2.0			4.0	2.0							
SIGNAL HEAD, POLYCARBONATE, LED, 1-FACE, 3-SECTION, MAST ARM MOUNTED	EACH	52.0	8.0	6.0	6.0	7.0	7.0	12.0	6.0							
SIGNAL HEAD, POLYCARBONATE, LED, 1-FACE, 4-SECTION, BRACKET MOUNTED	EACH	30.0	4.0	4.0	4.0	4.0	4.0	4.0	3.0	3.0						
SIGNAL HEAD, POLYCARBONATE, LED, 1-FACE, 4-SECTION, MAST ARM MOUNTED	EACH	25.0	4.0	4.0	4.0	5.0	5.0		3.0							
PEDESTRIAN SIGNAL HEAD, POLYCARBONATE, LED, 2-FACE, BRACKET MOUNTED WITH COUNT DOWN TIMER	EACH	28.0	4.0	4.0	4.0	4.0	4.0	4.0	4.0							
TRAFFIC SIGNAL BACKPLATE	EACH	117.0	16.0	16.0	16.0	16.0	16.0	20.0	14.0	3.0						
TRAFFIC CONTROL AND PROTECTION, (SPECIAL)	L SUM	1.0	0.1	0.1	0.1	0.1	0.1	0.1	0.1	0.1			0.1	0.1		
WIDE AREA VIDEO VEHICLE DETECTION SYSTEM COMPLETE	EACH	7.0				1.0					1.0	1.0	1.0	1.0	1.0	1.0
MODIFY EXISTING CONTROLLER AND CABINET	EACH	2.0						1.0		1.0						

MODEL: Default
FILE NAME: c:\pwworkspace\hanson\0039664\Sigs\Complete.dgn

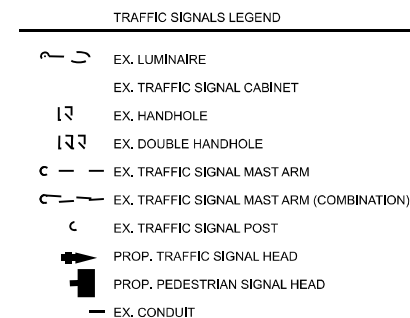
* PEORIA, TAZEWELL, AND WARREN

USER NAME = trevor.hanson	DESIGNED -	REVISED -	STATE OF ILLINOIS DEPARTMENT OF TRANSPORTATION	SCHEDULE OF QUANTITIES	F.A.P. RTE.	SECTION	COUNTY	TOTAL SHEETS	SHEET NO.	
	DRAWN -	REVISED -			VAR.	D4 TRAFFIC SIGNALS 2026	*	13	5	
	CHECKED -	REVISED -			CONTRACT NO. 68K85					
PLOT DATE = 1/7/2025	DATE -	REVISED -			SCALE:	SHEET	OF	SHEETS	STA.	TO STA.

ILLINOIS FED. AID PROJECT



BILL OF MATERIALS		
IL 40 (KNOXVILLE AVE.) & GLEN AVE.		
ITEM DESCRIPTION	UNIT	QTY.
ELECTRIC CABLE IN CONDUIT, SIGNAL NO. 14 5C	FOOT	1660.5
ELECTRIC CABLE IN CONDUIT, SIGNAL NO. 14 7C	FOOT	2193.0
SIGNAL HEAD, POLYCARBONATE, LED, 1-FACE, 3-SECTION, MAST ARM MOUNTED	EACH	8.0
SIGNAL HEAD, POLYCARBONATE, LED, 1-FACE, 4-SECTION, BRACKET MOUNTED	EACH	4.0
SIGNAL HEAD, POLYCARBONATE, LED, 1-FACE, 4-SECTION, MAST ARM MOUNTED	EACH	4.0
PEDESTRIAN SIGNAL HEAD, POLYCARBONATE, LED, 2-FACE, BRACKET MOUNTED WITH COUNT DOWN TIMER	EACH	4.0
TRAFFIC SIGNAL BACKPLATE	EACH	16.0



REMOVAL SCHEDULE	
IL 40 (KNOXVILLE AVE.) & GLEN AVE.	
THE CONTRACTOR SHALL REMOVE THE FOLLOWING ITEMS OFF OF THE RIGHT-OF-WAY:	
DESCRIPTION	QTY
SH P LED 1F 3S MAM	8
SH P LED 1F 4S BM	4
SH P LED 1F 4S MAM	4
PED SH P LED 2F BM CT	4
TS BACKPLATE	12
ELECTRIC CABLE (NOT USED IN PROPOSED PLANS)	ALL

THE COST OF THIS WORK WILL NOT BE PAID FOR SEPERATELY, BUT SHALL BE INCLUDED IN THE BID PRICE OF THE PROPOSED ITEMS

SIGNAL HEAD SCHEDULE		
IL 40 (KNOXVILLE AVE.) & GLEN AVE.		
DESCRIPTION	LOCATION	QTY
SH P LED 1F 3S MAM	2,3,6,7,10,11,14,15	8
SH P LED 1F 4S BM	4,8,12,16	4
SH P LED 1F 4S MAM	1,5,9,13	4
PED SH P LED 2F BM CT	A/B, C/D, E/F, G/H	4
TS BACKPLATE	1,2,3,4,5,6,7,8,9,10,11,12,13,14,15,16	16

MODEL: Default
FILE NAME: c:\pwworkspace\hanson\1\00396684\SIGNALS\Complete.dgn

USER NAME = trevor.hanson	DESIGNED -	REVISED -
	DRAWN -	REVISED -
	CHECKED -	REVISED -
PLOT DATE = 1/7/2025	DATE -	REVISED -

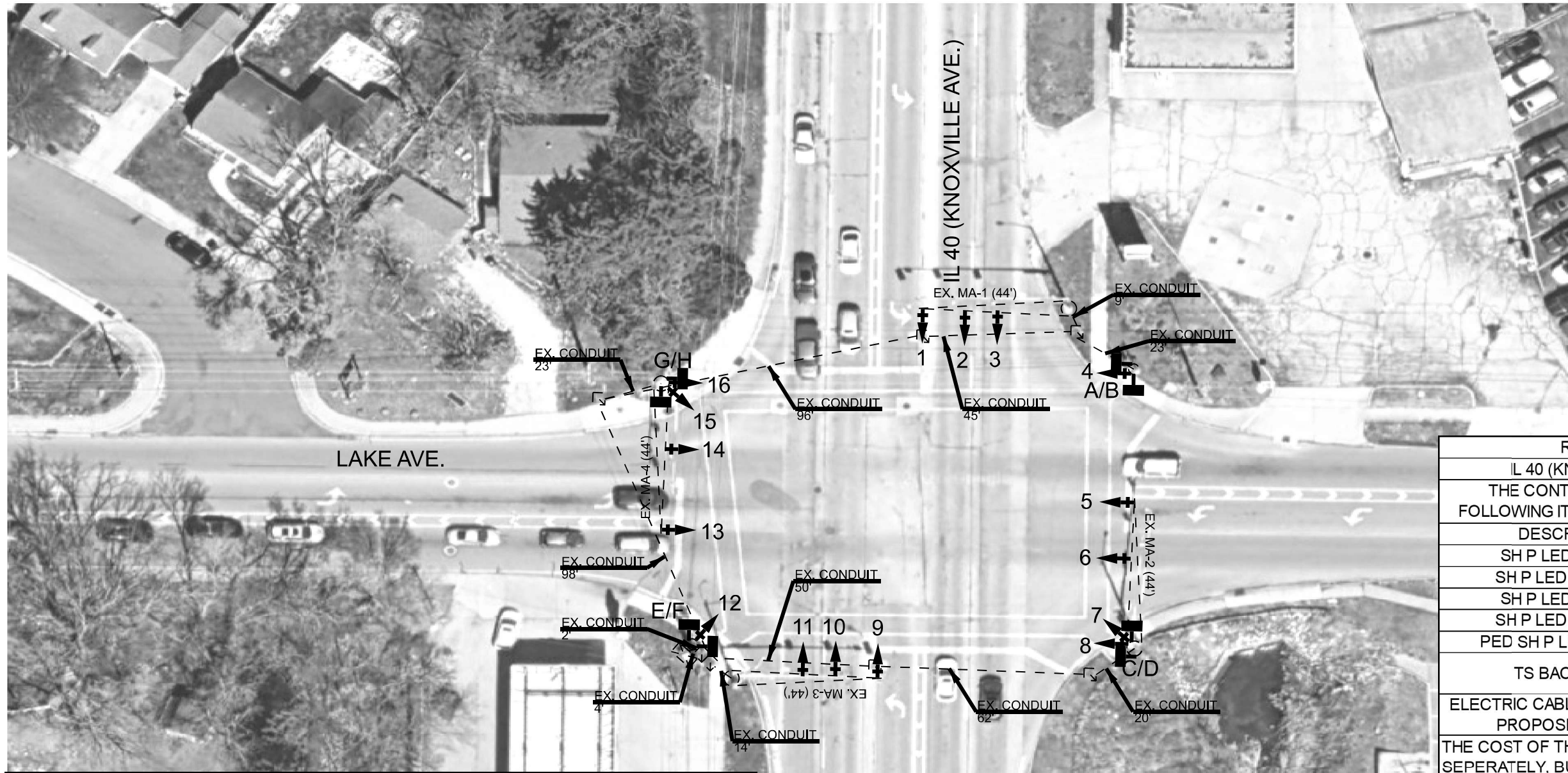
STATE OF ILLINOIS
DEPARTMENT OF TRANSPORTATION

PROPOSED TRAFFIC SIGNAL IMPROVEMENTS
IL 40 (KNOXVILLE) & GLEN - PEORIA

SCALE: SHEET OF SHEETS STA. TO STA.

F.A.P. RTE.	SECTION	COUNTY	TOTAL SHEETS	SHEET NO.
VAR.	D4 TRAFFIC SIGNALS 2026	PEORIA	13	6
ILLINOIS FED. AID PROJECT			CONTRACT NO. 68K85	

NOT TO SCALE



REMOVAL SCHEDULE	
IL 40 (KNOXVILLE AVE.) & LAKE AVE	
THE CONTRACTOR SHALL REMOVE THE FOLLOWING ITEMS OFF OF THE RIGHT-OF-WAY:	
DESCRIPTION	QTY
SH P LED 1F 3S BM	2
SH P LED 1F 3S MAM	6
SH P LED 1F 4S BM	4
SH P LED 1F 4S MAM	4
PED SH P LED 2F BM CT	4
TS BACKPLATE	14
ELECTRIC CABLE (NOT USED IN PROPOSED PLANS)	ALL
THE COST OF THIS WORK WILL NOT BE PAID FOR SEPERATELY, BUT SHALL BE INCLUDED IN THE BID PRICE OF THE PROPOSED ITEMS	

BILL OF MATERIALS		
IL 40 (KNOXVILLE AVE.) & LAKE AVE.		
ITEM DESCRIPTION	UNIT	QTY.
ELECTRIC CABLE IN CONDUIT, SIGNAL NO. 14 5C	FOOT	1236.5
ELECTRIC CABLE IN CONDUIT, SIGNAL NO. 14 7C	FOOT	2334.0
SIGNAL HEAD, POLYCARBONATE, LED, 1-FACE, 3-SECTION, BRACKET MOUNTED	EACH	2.0
SIGNAL HEAD, POLYCARBONATE, LED, 1-FACE, 3-SECTION, MAST ARM MOUNTED	EACH	6.0
SIGNAL HEAD, POLYCARBONATE, LED, 1-FACE, 4-SECTION, BRACKET MOUNTED	EACH	4.0
SIGNAL HEAD, POLYCARBONATE, LED, 1-FACE, 4-SECTION, MAST ARM MOUNTED	EACH	4.0
PEDESTRIAN SIGNAL HEAD, POLYCARBONATE, LED, 2-FACE, BRACKET MOUNTED WITH COUNT DOWN TIMER	EACH	4.0
TRAFFIC SIGNAL BACKPLATE	EACH	16.0

SIGNAL HEAD SCHEDULE		
IL 40 (KNOXVILLE AVE.) & LAKE AVE.		
DESCRIPTION	LOCATION	QTY
SH P LED 1F 3S BM	8,16	2
SH P LED 1F 3S MAM	2,3,6,10,11,14	6
SH P LED 1F 4S BM	4,7,12,15	4
SH P LED 1F 4S MAM	1,5,9,13	4
PED SH P LED 2F BM CT	A/B, C/D, E/F, G/H	4
TS BACKPLATE	1,2,3,4,5,6,7,8,9,10,11,12,13,14,15,16	16

- TRAFFIC SIGNALS LEGEND
- EX. LUMINAIRE
 - EX. TRAFFIC SIGNAL CABINET
 - EX. HANDHOLE
 - EX. DOUBLE HANDHOLE
 - EX. TRAFFIC SIGNAL MAST ARM
 - EX. TRAFFIC SIGNAL MAST ARM (COMBINATION)
 - EX. TRAFFIC SIGNAL POST
 - PROP. TRAFFIC SIGNAL HEAD
 - PROP. PEDESTRIAN SIGNAL HEAD
 - EX. CONDUIT

MODEL: Default
FILE NAME: c:\pwworkspace\hanson\1\0039664\SIGNALS Complete.dgn

USER NAME = trevor.hanson	DESIGNED -	REVISED -
	DRAWN -	REVISED -
	CHECKED -	REVISED -
PLOT DATE = 1/7/2025	DATE -	REVISED -

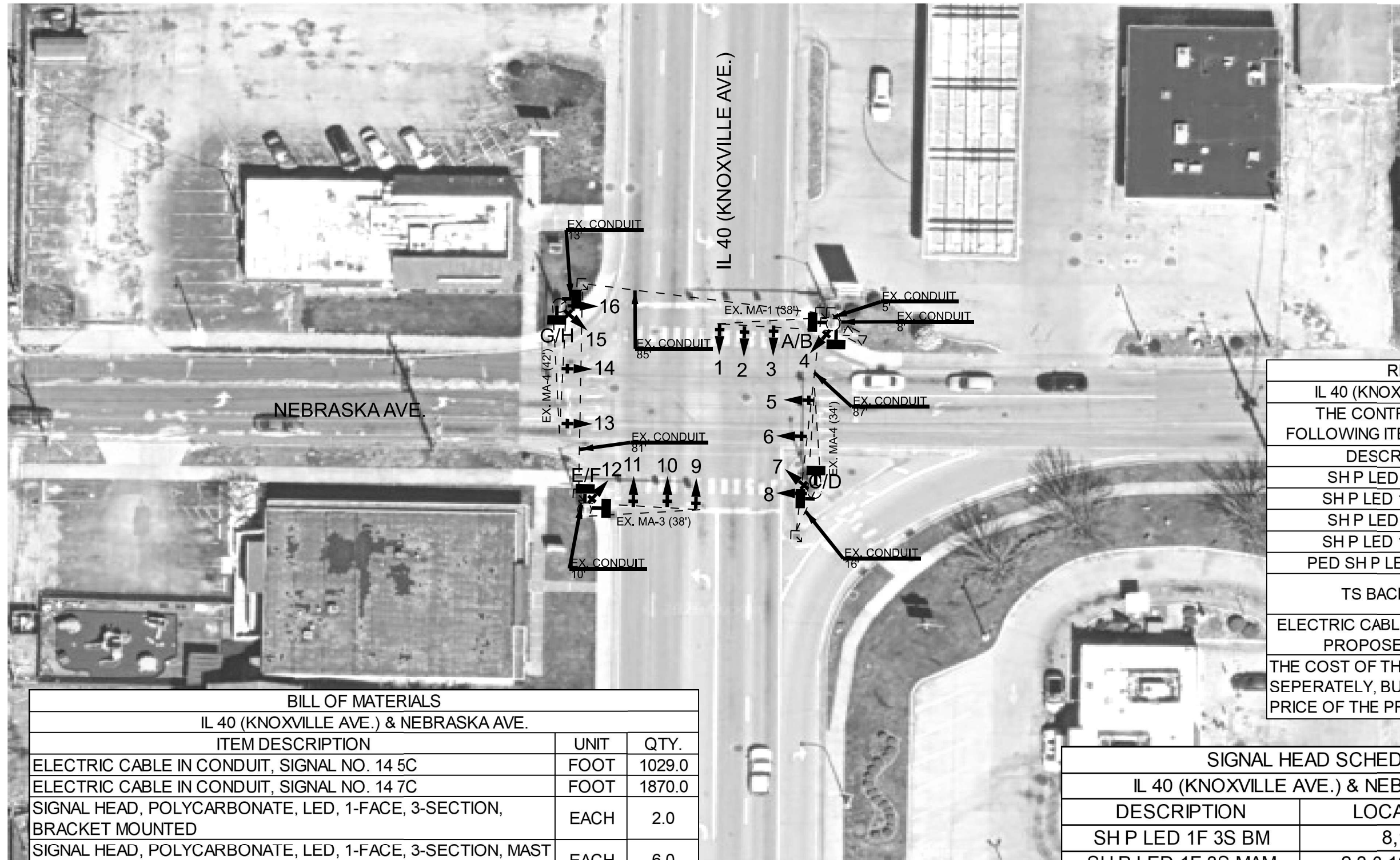
STATE OF ILLINOIS
DEPARTMENT OF TRANSPORTATION

PROPOSED TRAFFIC SIGNAL IMPROVEMENTS
IL 40 (KNOXVILLE) & LAKE - PEORIA

SCALE: SHEET OF SHEETS STA. TO STA.

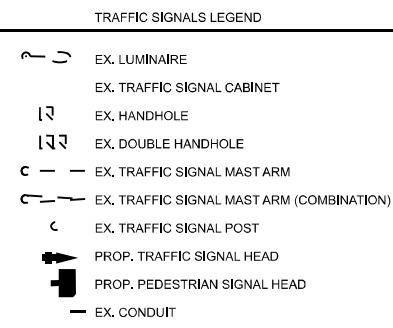
F.A.P. RTE.	SECTION	COUNTY	TOTAL SHEETS	SHEET NO.
VAR.	D4 TRAFFIC SIGNALS 2026	PEORIA	13	7
ILLINOIS FED. AID PROJECT			CONTRACT NO. 68K85	

NOT TO SCALE



REMOVAL SCHEDULE	
IL 40 (KNOXVILLE AVE.) & NEBRASKA AVE	
THE CONTRACTOR SHALL REMOVE THE FOLLOWING ITEMS OFF OF THE RIGHT-OF-WAY:	
DESCRIPTION	QTY
SH P LED 1F 3S BM	2
SH P LED 1F 3S MAM	6
SH P LED 1F 4S BM	4
SH P LED 1F 4S MAM	4
PED SH P LED 2F BM CT	4
TS BACKPLATE	16
ELECTRIC CABLE (NOT USED IN PROPOSED PLANS)	ALL
THE COST OF THIS WORK WILL NOT BE PAID FOR SEPERATELY, BUT SHALL BE INCLUDED IN THE BID PRICE OF THE PROPOSED ITEMS	

BILL OF MATERIALS			
IL 40 (KNOXVILLE AVE.) & NEBRASKA AVE.			
ITEM DESCRIPTION	UNIT	QTY.	
ELECTRIC CABLE IN CONDUIT, SIGNAL NO. 14 5C	FOOT	1029.0	
ELECTRIC CABLE IN CONDUIT, SIGNAL NO. 14 7C	FOOT	1870.0	
SIGNAL HEAD, POLYCARBONATE, LED, 1-FACE, 3-SECTION, BRACKET MOUNTED	EACH	2.0	
SIGNAL HEAD, POLYCARBONATE, LED, 1-FACE, 3-SECTION, MAST ARM MOUNTED	EACH	6.0	
SIGNAL HEAD, POLYCARBONATE, LED, 1-FACE, 4-SECTION, BRACKET MOUNTED	EACH	4.0	
SIGNAL HEAD, POLYCARBONATE, LED, 1-FACE, 4-SECTION, MAST ARM MOUNTED	EACH	4.0	
PEDESTRIAN SIGNAL HEAD, POLYCARBONATE, LED, 2-FACE, BRACKET MOUNTED WITH COUNT DOWN TIMER	EACH	4.0	
TRAFFIC SIGNAL BACKPLATE	EACH	16.0	



SIGNAL HEAD SCHEDULE		
IL 40 (KNOXVILLE AVE.) & NEBRASKA AVE.		
DESCRIPTION	LOCATION	QTY
SH P LED 1F 3S BM	8,16	2
SH P LED 1F 3S MAM	2,3,6,10,11,14	6
SH P LED 1F 4S BM	4,7,12,15	4
SH P LED 1F 4S MAM	1,5,9,13	4
PED SH P LED 2F BM CT	A/B, C/D, E/F, G/H	4
TS BACKPLATE	1,2,3,4,5,6,7,8,9,10,11,12,13,14,15,16	16

NOT TO SCALE

MODEL: Default
FILE NAME: c:\pwwork\kvhanson\0039684\SIGNALS Complete.dgn

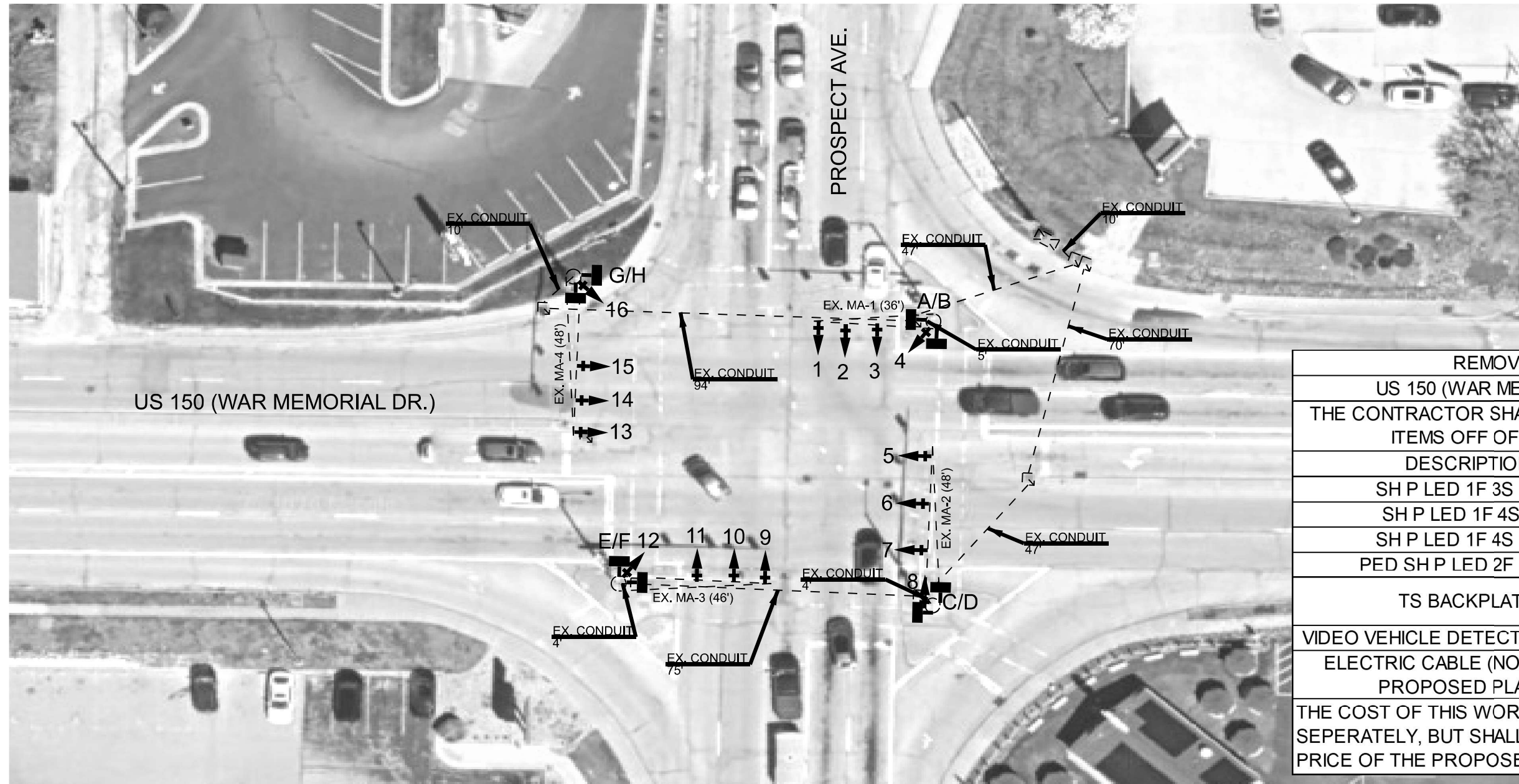
USER NAME = trevor.hanson	DESIGNED -	REVISED -
	DRAWN -	REVISED -
	CHECKED -	REVISED -
PLOT DATE = 1/7/2025	DATE -	REVISED -

STATE OF ILLINOIS
DEPARTMENT OF TRANSPORTATION

PROPOSED TRAFFIC SIGNAL IMPROVEMENTS
IL 40 (KNOXVILLE) & NEBRASKA - PEORIA

SCALE: SHEET OF SHEETS STA. TO STA.

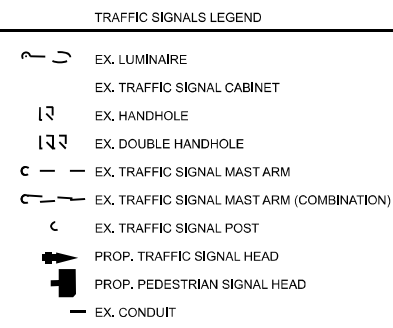
F.A.P. RTE.	SECTION	COUNTY	TOTAL SHEETS	SHEET NO.
VAR.	D4 TRAFFIC SIGNALS 2026	PEORIA	13	8
CONTRACT NO. 68K85				
ILLINOIS FED. AID PROJECT				



REMOVAL SCHEDULE	
US 150 (WAR MEMORIAL) & PROSPECT	
THE CONTRACTOR SHALL REMOVE THE FOLLOWING ITEMS OFF OF THE RIGHT-OF-WAY:	
DESCRIPTION	QTY
SH P LED 1F 3S MAM	7
SH P LED 1F 4S BM	4
SH P LED 1F 4S MAM	5
PED SH P LED 2F BM CT	4
TS BACKPLATE	12
VIDEO VEHICLE DETECTION SYSTEM	1
ELECTRIC CABLE (NOT USED IN PROPOSED PLANS)	ALL
THE COST OF THIS WORK WILL NOT BE PAID FOR SEPERATELY, BUT SHALL BE INCLUDED IN THE BID PRICE OF THE PROPOSED ITEMS	

BILL OF MATERIALS		
US 150 (WAR MEMORIAL) & PROSPECT		
ITEM DESCRIPTION	UNIT	QTY.
ELECTRIC CABLE IN CONDUIT, SIGNAL NO. 14 5C	FOOT	1666.0
ELECTRIC CABLE IN CONDUIT, SIGNAL NO. 14 7C	FOOT	2470.0
SIGNAL HEAD, POLYCARBONATE, LED, 1-FACE, 3-SECTION, MAST ARM MOUNTED	EACH	7.0
SIGNAL HEAD, POLYCARBONATE, LED, 1-FACE, 4-SECTION, BRACKET MOUNTED	EACH	4.0
SIGNAL HEAD, POLYCARBONATE, LED, 1-FACE, 4-SECTION, MAST ARM MOUNTED	EACH	5.0
PEDESTRIAN SIGNAL HEAD, POLYCARBONATE, LED, 2-FACE, BRACKET MOUNTED WITH COUNT DOWN TIMER	EACH	4.0
TRAFFIC SIGNAL BACKPLATE	EACH	16.0
WIDE AREA VIDEO VEHICLE DETECTION SYSTEM COMPLETE	EACH	1.0

SIGNAL HEAD SCHEDULE		
US 150 (WAR MEMORIAL) & PROSPECT		
DESCRIPTION	LOCATION	QTY
SH P LED 1F 3S MAM	2,3,6,7,11,14,15	7
SH P LED 1F 4S BM	4,8,12,16	4
SH P LED 1F 4S MAM	1,5,9,10,13	5
PED SH P LED 2F BM CT	A/B, C/D, E/F, G/H	4
TS BACKPLATE	1,2,3,4,5,6,7,8,9,10,11,12,13,14,15,16	16



MODEL: Default
FILE NAME: c:\pwworkspace\hanson\1\0309684\SIGNALS Complete.dgn

USER NAME = trevor.hanson	DESIGNED -	REVISED -
	DRAWN -	REVISED -
	CHECKED -	REVISED -
PLOT DATE = 1/7/2025	DATE -	REVISED -

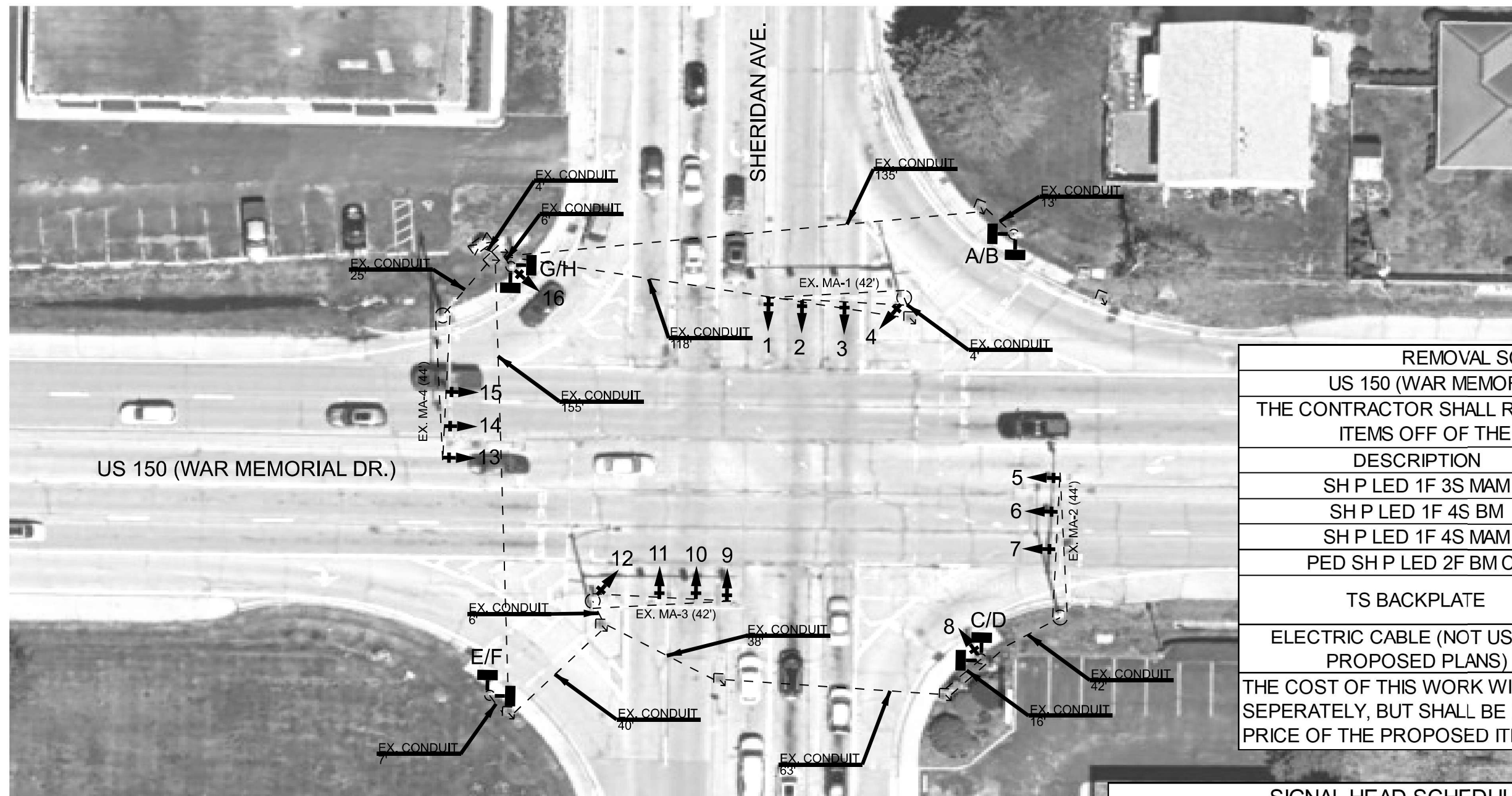
STATE OF ILLINOIS
DEPARTMENT OF TRANSPORTATION

PROPOSED TRAFFIC SIGNAL IMPROVEMENTS
US 150 (WAR MEMORIAL) & PROSPECT - PEORIA

SCALE: SHEET OF SHEETS STA. TO STA.

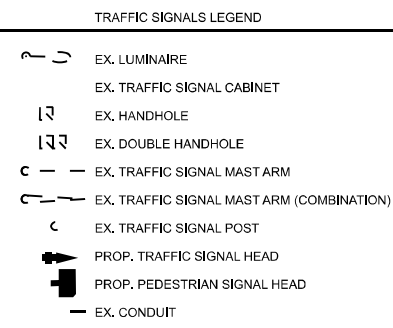
F.A.P. RTE.	SECTION	COUNTY	TOTAL SHEETS	SHEET NO.
VAR.	D4 TRAFFIC SIGNALS 2026	PEORIA	13	9
ILLINOIS FED. AID PROJECT			CONTRACT NO. 68K85	

NOT TO SCALE



REMOVAL SCHEDULE	
US 150 (WAR MEMORIAL) & SHERIDAN	
THE CONTRACTOR SHALL REMOVE THE FOLLOWING ITEMS OFF OF THE RIGHT-OF-WAY:	
DESCRIPTION	QTY
SH P LED 1F 3S MAM	7
SH P LED 1F 4S BM	4
SH P LED 1F 4S MAM	5
PED SH P LED 2F BM CT	4
TS BACKPLATE	12
ELECTRIC CABLE (NOT USED IN PROPOSED PLANS)	ALL
THE COST OF THIS WORK WILL NOT BE PAID FOR SEPERATELY, BUT SHALL BE INCLUDED IN THE BID PRICE OF THE PROPOSED ITEMS	

BILL OF MATERIALS			
US 150 (WAR MEMORIAL) & SHERIDAN			
ITEM DESCRIPTION	UNIT	QTY.	
ELECTRIC CABLE IN CONDUIT, SIGNAL NO. 14 5C	FOOT	1851.5	
ELECTRIC CABLE IN CONDUIT, SIGNAL NO. 14 7C	FOOT	2758.0	
SIGNAL HEAD, POLYCARBONATE, LED, 1-FACE, 3-SECTION, MAST ARM MOUNTED	EACH	7.0	
SIGNAL HEAD, POLYCARBONATE, LED, 1-FACE, 4-SECTION, BRACKET MOUNTED	EACH	4.0	
SIGNAL HEAD, POLYCARBONATE, LED, 1-FACE, 4-SECTION, MAST ARM MOUNTED	EACH	5.0	
PEDESTRIAN SIGNAL HEAD, POLYCARBONATE, LED, 2-FACE, BRACKET MOUNTED WITH COUNT DOWN TIMER	EACH	4.0	
TRAFFIC SIGNAL BACKPLATE	EACH	16.0	



SIGNAL HEAD SCHEDULE		
US 150 (WAR MEMORIAL) & SHERIDAN		
DESCRIPTION	LOCATION	QTY
SH P LED 1F 3S MAM	2,3,6,7,11,14,15	7
SH P LED 1F 4S BM	4,8,12,16	4
SH P LED 1F 4S MAM	1,5,9,10,13	5
PED SH P LED 2F BM CT	A/B, C/D, E/F, G/H	4
TS BACKPLATE	1,2,3,4,5,6,7,8,9,10,11,12,13,14,15,16	16

NOT TO SCALE

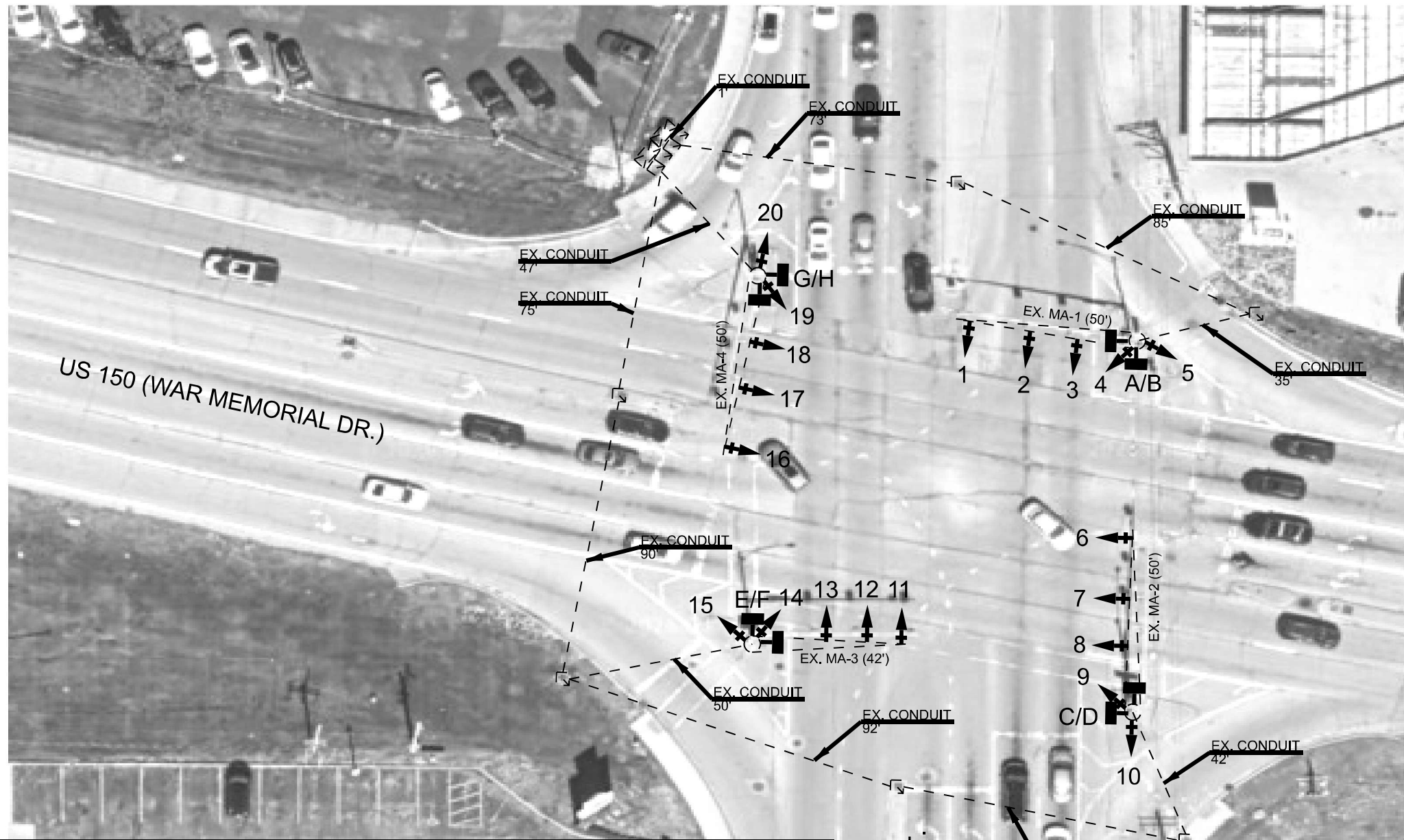
MODEL: Default
FILE NAME: c:\pwworkspace\hanson\1\0039684\SIGNALS Complete.dgn

USER NAME = trevor.hanson	DESIGNED -	REVISED -
	DRAWN -	REVISED -
	CHECKED -	REVISED -
PLOT DATE = 1/7/2025	DATE -	REVISED -

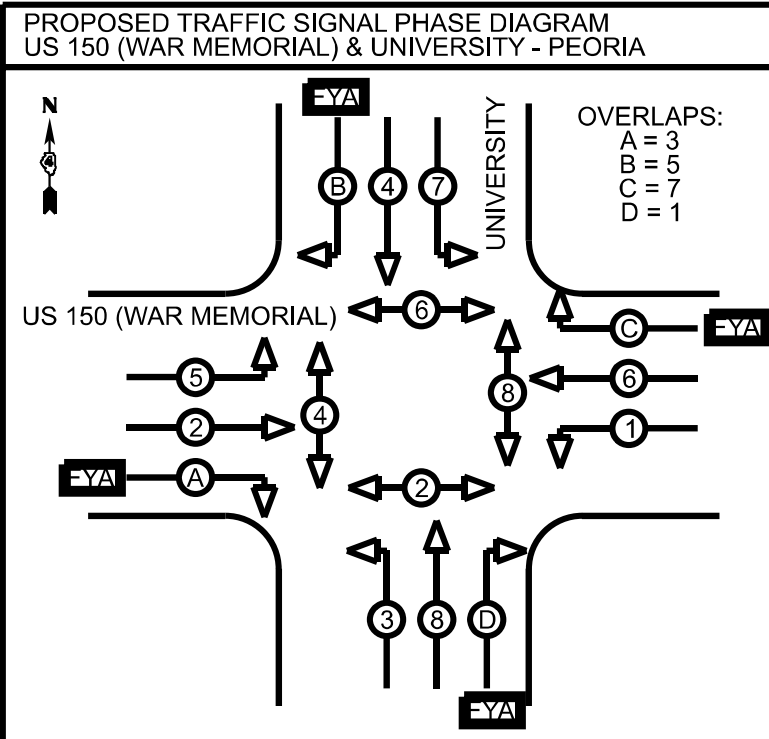
STATE OF ILLINOIS
DEPARTMENT OF TRANSPORTATION

PROPOSED TRAFFIC SIGNAL IMPROVEMENTS US 150 (WAR MEMORIAL) & SHERIDAN - PEORIA			
SCALE:	SHEET	OF SHEETS	STA. TO STA.

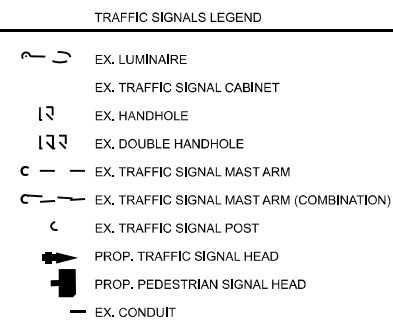
F.A.P. RTE.	SECTION	COUNTY	TOTAL SHEETS	SHEET NO.
VAR.	D4 TRAFFIC SIGNALS 2026	PEORIA	13	10
CONTRACT NO. 68K85				
ILLINOIS FED. AID PROJECT				



REMOVAL SCHEDULE	
US 150 (WAR MEMORIAL) & UNIVERSITY	
THE CONTRACTOR SHALL REMOVE THE FOLLOWING ITEMS OFF OF THE RIGHT-OF-WAY:	
DESCRIPTION	QTY
SH P LED 1F 3S BM	4
SH P LED 1F 3S MAM	12
SH P LED 1F 5S BM	4
PED SH P LED 2F BM CT	4
TS BACKPLATE	12
ELECTRIC CABLE (NOT USED IN PROPOSED PLANS)	ALL
THE COST OF THIS WORK WILL NOT BE PAID FOR SEPERATELY, BUT SHALL BE INCLUDED IN THE BID PRICE OF THE PROPOSED ITEMS	



BILL OF MATERIALS		
US 150 (WAR MEMORIAL) & UNIVERSITY		
ITEM DESCRIPTION	UNIT	QTY.
ELECTRIC CABLE IN CONDUIT, SIGNAL NO. 14 5C	FOOT	3507.0
ELECTRIC CABLE IN CONDUIT, SIGNAL NO. 14 7C	FOOT	2050.0
SIGNAL HEAD, POLYCARBONATE, LED, 1-FACE, 3-SECTION, BRACKET MOUNTED	EACH	4.0
SIGNAL HEAD, POLYCARBONATE, LED, 1-FACE, 3-SECTION, MAST ARM MOUNTED	EACH	12.0
SIGNAL HEAD, POLYCARBONATE, LED, 1-FACE, 4-SECTION, BRACKET MOUNTED	EACH	4.0
PEDESTRIAN SIGNAL HEAD, POLYCARBONATE, LED, 2-FACE, BRACKET MOUNTED WITH COUNT DOWN TIMER	EACH	4.0
TRAFFIC SIGNAL BACKPLATE	EACH	20.0
MODIFY EXISTING CONTROLLER AND CABINET	EACH	1.0



SIGNAL HEAD SCHEDULE		
US 150 (WAR MEMORIAL) & UNIVERSITY		
DESCRIPTION	LOCATION	QTY
SH P LED 1F 3S BM	4,9,14,19	4
SH P LED 1F 3S MAM	1,2,3,6,7,8,11,12,13,16,17,18	12
SH P LED 1F 4S BM	5,10,15,20	4
PED SH P LED 2F BM CT	A/B, C/D, E/F, G/H	4
TS BACKPLATE	1,2,3,4,5,6,7,8,9,10,11,12,13,14,15,16,17,18,19,20	20

NOT TO SCALE

MODEL: Default
FILE NAME: c:\pwwork\hanson\0039684\SIGNALS Complete.dgn

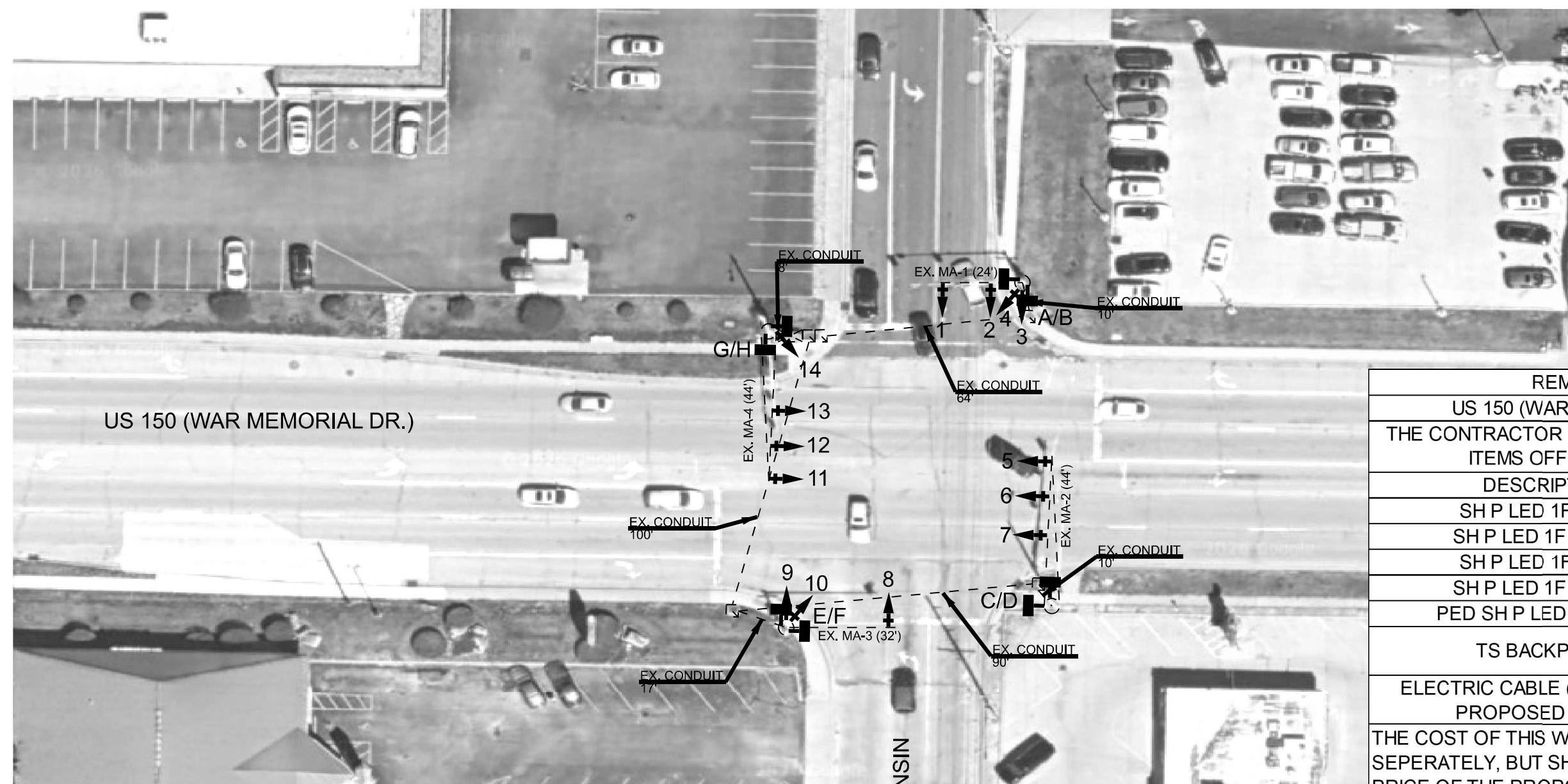
USER NAME = trevor.hanson	DESIGNED -	REVISED -
	DRAWN -	REVISED -
	CHECKED -	REVISED -
PLOT DATE = 1/7/2025	DATE -	REVISED -

**STATE OF ILLINOIS
DEPARTMENT OF TRANSPORTATION**

**PROPOSED TRAFFIC SIGNAL IMPROVEMENTS
US 150 (WAR MEMORIAL) & UNIVERSITY - PEORIA**

F.A.P. RTE.	SECTION	COUNTY	TOTAL SHEETS	SHEET NO.
VAR.	D4 TRAFFIC SIGNALS 2026	PEORIA	13	11
CONTRACT NO. 68K85				
ILLINOIS FED. AID PROJECT				

SCALE: SHEET OF SHEETS STA. TO STA.



US 150 (WAR MEMORIAL DR.)

WISCONSIN

REMOVAL SCHEDULE	
US 150 (WAR MEMORIAL) & WISCONSIN	
THE CONTRACTOR SHALL REMOVE THE FOLLOWING ITEMS OFF OF THE RIGHT-OF-WAY:	
DESCRIPTION	QTY
SH P LED 1F 3S BM	2
SH P LED 1F 3S MAM	6
SH P LED 1F 4S BM	3
SH P LED 1F 4S MAM	3
PED SH P LED 2F BM CT	4
TS BACKPLATE	14
ELECTRIC CABLE (NOT USED IN PROPOSED PLANS)	ALL
THE COST OF THIS WORK WILL NOT BE PAID FOR SEPERATELY, BUT SHALL BE INCLUDED IN THE BID PRICE OF THE PROPOSED ITEMS	

BILL OF MATERIALS			
US 150 (WAR MEMORIAL) & WISCONSIN			
ITEM DESCRIPTION	UNIT	QTY.	
ELECTRIC CABLE IN CONDUIT, SIGNAL NO. 14 5C	FOOT	998.0	
ELECTRIC CABLE IN CONDUIT, SIGNAL NO. 14 7C	FOOT	1422.5	
SIGNAL HEAD, POLYCARBONATE, LED, 1-FACE, 3-SECTION, BRACKET MOUNTED	EACH	2.0	
SIGNAL HEAD, POLYCARBONATE, LED, 1-FACE, 3-SECTION, MAST ARM MOUNTED	EACH	6.0	
SIGNAL HEAD, POLYCARBONATE, LED, 1-FACE, 4-SECTION, BRACKET MOUNTED	EACH	3.0	
SIGNAL HEAD, POLYCARBONATE, LED, 1-FACE, 4-SECTION, MAST ARM MOUNTED	EACH	3.0	
PEDESTRIAN SIGNAL HEAD, POLYCARBONATE, LED, 2-FACE, BRACKET MOUNTED WITH COUNT DOWN TIMER	EACH	4.0	
TRAFFIC SIGNAL BACKPLATE	EACH	14.0	

TRAFFIC SIGNALS LEGEND	
	EX. LUMINAIRE
	EX. TRAFFIC SIGNAL CABINET
	EX. HANDHOLE
	EX. DOUBLE HANDHOLE
	EX. TRAFFIC SIGNAL MAST ARM
	EX. TRAFFIC SIGNAL MAST ARM (COMBINATION)
	EX. TRAFFIC SIGNAL POST
	PROP. TRAFFIC SIGNAL HEAD
	PROP. PEDESTRIAN SIGNAL HEAD
	EX. CONDUIT

SIGNAL HEAD SCHEDULE		
US 150 (WAR MEMORIAL) & WISCONSIN		
DESCRIPTION	LOCATION	QTY
SH P LED 1F 3S BM	3,9	2
SH P LED 1F 3S MAM	2,6,7,8,12,13	6
SH P LED 1F 4S BM	4,10,14	3
SH P LED 1F 4S MAM	1,5,11	3
PED SH P LED 2F BM CT	A/B, C/D, E/F, G/H	4
TS BACKPLATE	1,2,3,4,5,6,7,8,9,10,11,12,13,14	14

NOT TO SCALE

MODEL: Default
FILE NAME: c:\pwworkspace\hanson\1\0039664\SIGNALS Complete.dgn

USER NAME = trevor.hanson	DESIGNED -	REVISED -
	DRAWN -	REVISED -
	CHECKED -	REVISED -
PLOT DATE = 1/7/2025	DATE -	REVISED -

STATE OF ILLINOIS
DEPARTMENT OF TRANSPORTATION

PROPOSED TRAFFIC SIGNAL IMPROVEMENTS
US 150 (WAR MEMORIAL) & WISCONSIN - PEORIA

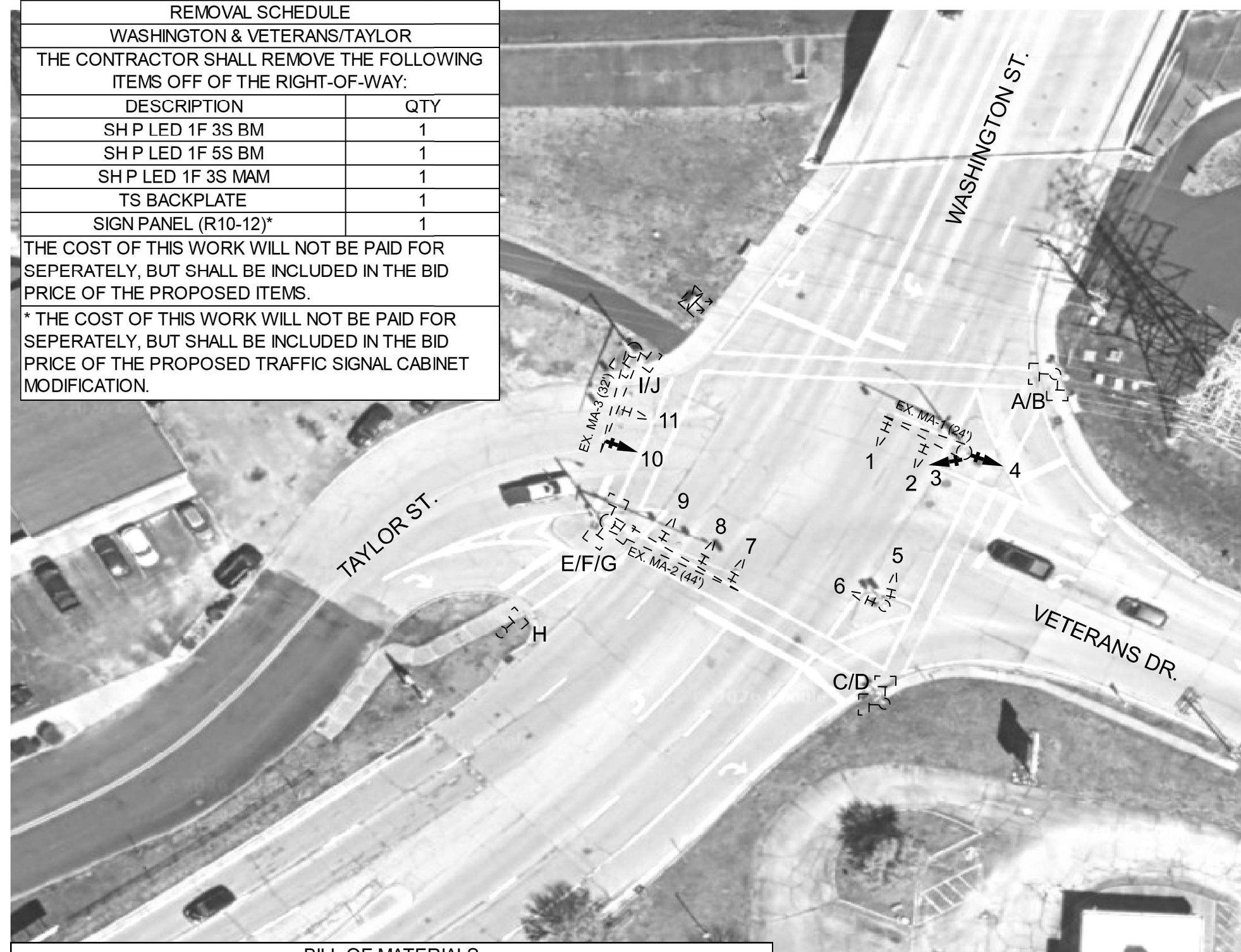
SCALE: SHEET OF SHEETS STA. TO STA.

F.A.P. RTE.	SECTION	COUNTY	TOTAL SHEETS	SHEET NO.
VAR.	D4 TRAFFIC SIGNALS 2026	PEORIA	13	12
ILLINOIS FED. AID PROJECT			CONTRACT NO. 68K85	

REMOVAL SCHEDULE	
WASHINGTON & VETERANS/TAYLOR	
THE CONTRACTOR SHALL REMOVE THE FOLLOWING ITEMS OFF OF THE RIGHT-OF-WAY:	
DESCRIPTION	QTY
SH P LED 1F 3S BM	1
SH P LED 1F 5S BM	1
SH P LED 1F 3S MAM	1
TS BACKPLATE	1
SIGN PANEL (R10-12)*	1

THE COST OF THIS WORK WILL NOT BE PAID FOR SEPERATELY, BUT SHALL BE INCLUDED IN THE BID PRICE OF THE PROPOSED ITEMS.

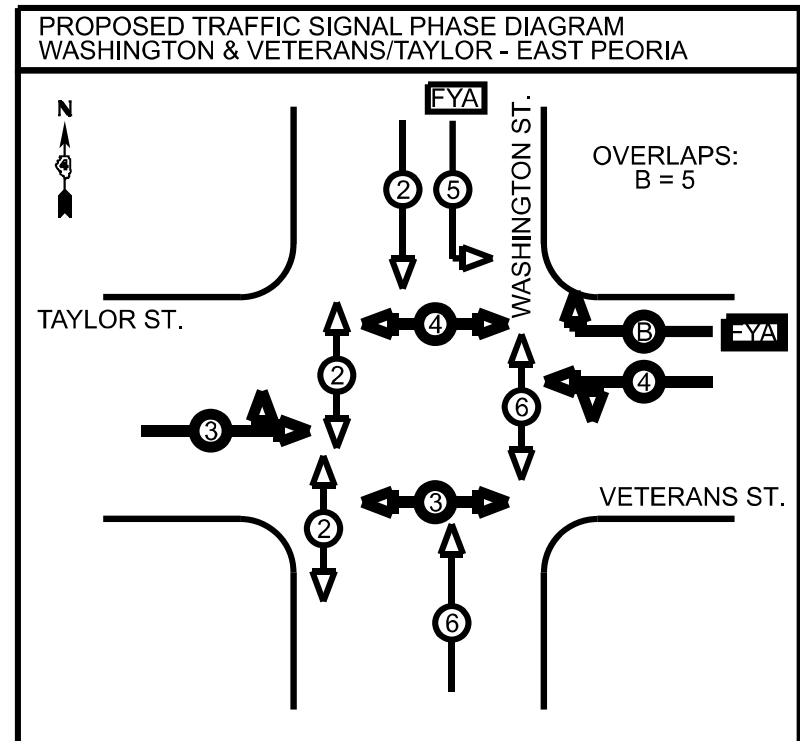
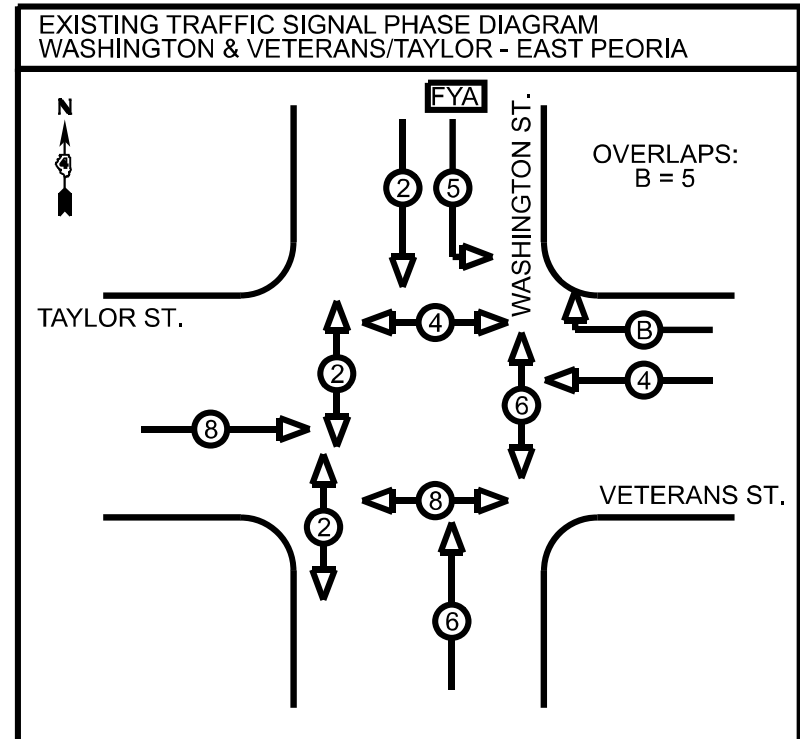
* THE COST OF THIS WORK WILL NOT BE PAID FOR SEPERATELY, BUT SHALL BE INCLUDED IN THE BID PRICE OF THE PROPOSED TRAFFIC SIGNAL CABINET MODIFICATION.



BILL OF MATERIALS			
WASHINGTON & VETERANS/TAYLOR			
ITEM DESCRIPTION	UNIT	QTY.	
SIGNAL HEAD, POLYCARBONATE, LED, 1-FACE, 4-SECTION, BRACKET MOUNTED	EACH	2.0	
SIGNAL HEAD, POLYCARBONATE, LED, 1-FACE, 4-SECTION, MAST ARM MOUNTED	EACH	1.0	
TRAFFIC SIGNAL BACKPLATE	EACH	3.0	
MODIFY EXISTING CONTROLLER AND CABINET	EACH	1.0	

- TRAFFIC SIGNALS LEGEND
- EX. LUMINAIRE
 - EX. TRAFFIC SIGNAL CABINET
 - EX. HANDHOLE
 - EX. DOUBLE HANDHOLE
 - EX. TRAFFIC SIGNAL MAST ARM
 - EX. TRAFFIC SIGNAL MAST ARM (COMBINATION)
 - EX. TRAFFIC SIGNAL POST
 - PROP. TRAFFIC SIGNAL HEAD
 - PROP. PEDESTRIAN SIGNAL HEAD
 - EX. CONDUIT

SIGNAL HEAD SCHEDULE		
WASHINGTON & VETERANS/TAYLOR		
DESCRIPTION	LOCATION	QTY
SH P LED 1F 4S BM	3,4	2
SH P LED 1F 4S MAM	10	1
TS BACKPLATE	3,4,10	3



NOT TO SCALE

MODEL: Default
FILE NAME: c:\pwworkspace\hanson\10039684\SIGNALS Complete.dgn

USER NAME = trevor.hanson	DESIGNED -	REVISED -
	DRAWN -	REVISED -
	CHECKED -	REVISED -
PLOT DATE = 1/7/2025	DATE -	REVISED -

STATE OF ILLINOIS
DEPARTMENT OF TRANSPORTATION

PROPOSED TRAFFIC SIGNAL IMPROVEMENTS
WASHINGTON & VETERANS/TAYLOR - EAST PEORIA

SCALE: SHEET OF SHEETS STA. TO STA.

F.A.P. RTE.	SECTION	COUNTY	TOTAL SHEETS	SHEET NO.
VAR.	D4 TRAFFIC SIGNALS 2026	TAZEWELL	13	13
CONTRACT NO. 68K85				
ILLINOIS FED. AID PROJECT				