

STATE OF ILLINOIS
DEPARTMENT OF TRANSPORTATION

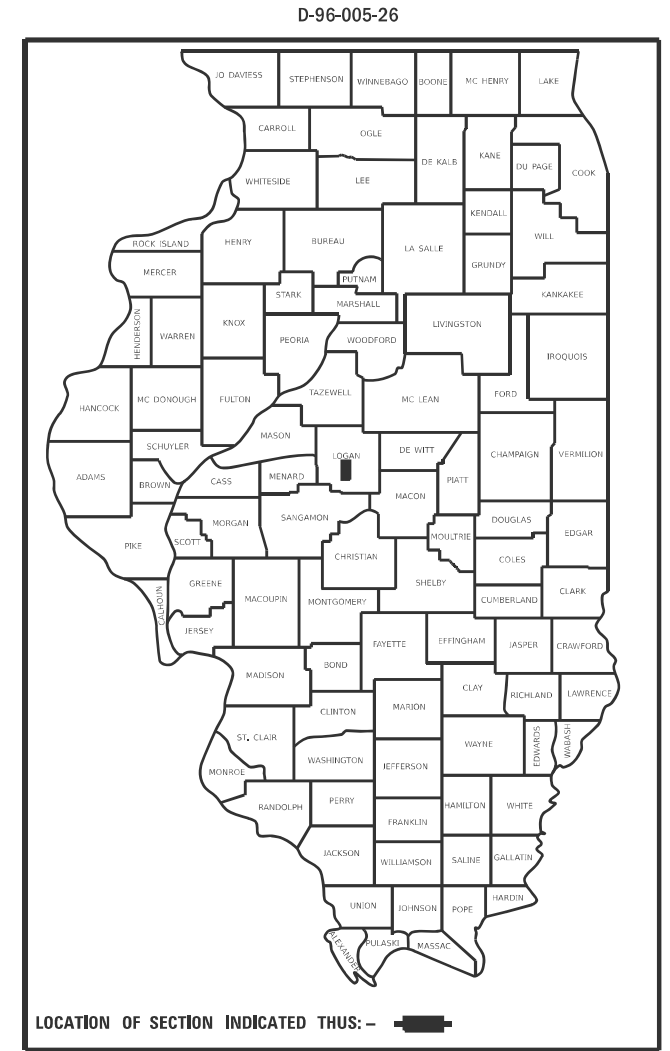
F.A.I. RTE.	SECTION	COUNTY	TOTAL SHEETS	SHEET NO.
55	(54-1,2)HL-1	LOGAN	8	1
		ILLINOIS	CONTRACT NO. 72509	

FOR INDEX OF SHEETS, SEE SHEET NO. 2

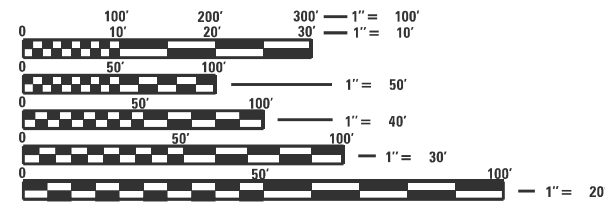
PROPOSED HIGHWAY PLANS

FAI ROUTE 55 (I 55)
SECTION (54-1,2)HL-1
PROJECT NHPP-VZRH(827)
HIGHWAY LIGHTING
LOGAN COUNTY

C-96-028-26

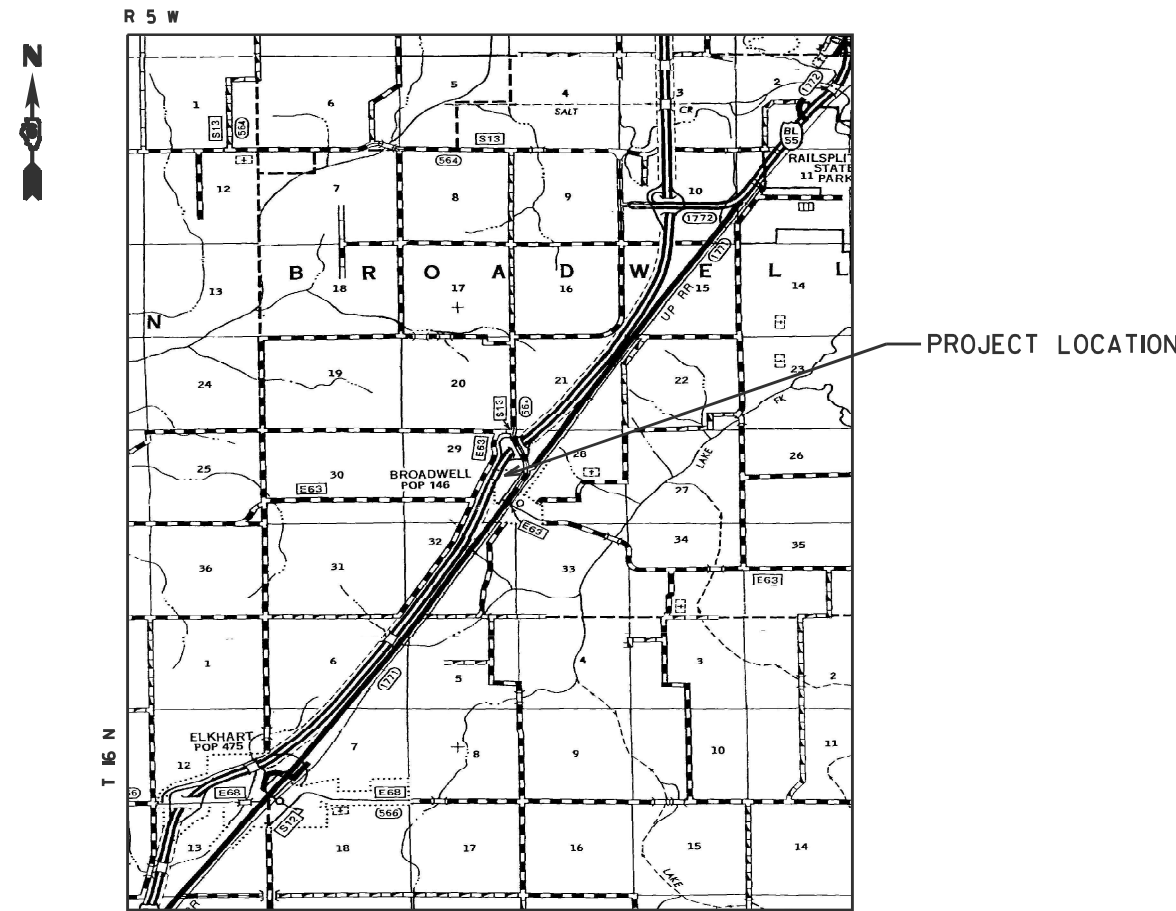


ADT = 16,600 (2023)
SU = 4,700 (2023)
MU = 400 (2023)



FULL SIZE PLANS HAVE BEEN PREPARED USING STANDARD ENGINEERING SCALES. REDUCED SIZED PLANS WILL NOT CONFORM TO STANDARD SCALES. IN MAKING MEASUREMENTS ON REDUCED PLANS, THE ABOVE SCALES MAY BE USED.

J.U.L.I.E.
JOINT UTILITY LOCATION INFORMATION FOR EXCAVATORS
1-800-892-0123
OR 811



PROJECT ENGINEER: MIKE HAMBY (217)524-7765
PROJECT MANAGER TIM SHARP (217)524-9160

CONTRACT NO. 72509

STATE OF ILLINOIS
DEPARTMENT OF TRANSPORTATION

SUBMITTED March 23, 2026
Teresa C. Price
REGIONAL ENGINEER

May 8, 2026
[Signature]
ENGINEER OF DESIGN AND ENVIRONMENT

May 8, 2026
[Signature]
DIRECTOR OF HIGHWAYS PROJECT IMPLEMENTATION

PRINTED BY THE AUTHORITY
OF THE STATE OF ILLINOIS

0-02088-6002
CONSTR. CODE
NHPP FUNDING
90% FED.10% STATE
LOGAN
LIGHTING
0021
RURAL

CODE NO.	ITEM	UNIT	TOTAL QUANTITY	
67100100	MODILIZATION	L SUM	1	1
70100450	TRAFFIC CONTROL AND PROTECTION, STANDARD 701201	L SUM	1	1
70100825	TRAFFIC CONTROL AND PROTECTION, STANDARD 701456	L SUM	1	1
80400100	ELECTRIC SERVICE INSTALLATION	EACH	1	1
80400200	ELECTRIC UTILITY SERVICE CONNECTION	L SUM	1	1
81028750	UNDERGROUND CONDUIT, COILABLE NONMETALLIC CONDUIT, 2" DIA.	FOOT	705	705
81603035	UNIT DUCT, 600V, 2-1C NO.6, 1/C NO. 6 GROUND, (XLP-TYPE USE), 1" DIA, POLYETHYLENE	FOOT	7425	7425
82110007	LUMINAIRE, LED ROADWAY, OUTPUT DESIGNATION G	EACH	22	22
82500330	LIGHTING CONTROLLER, PEDESTAL MOUNTED, 240VOLT, 60AMP	EACH	1	1
83001600	LIGHT POLE, ALUMINUM, 35 FT. M.H., 15 FT. DAVIT ARM	EACH	22	22
83600352	LIGHT POLE FOUNDATION, METAL, 11 1/2" BOLT CIRCLE, 8 5/8" X 6'	EACH	22	22
83800650	BREAKAWAY DEVICE, COUPLING WITH STAINLESS STEEL SCREEN	EACH	88	88
84200500	REMOVAL OF LIGHTING UNIT, SALVAGE	EACH	2	2
84200605	REMOVAL OF LIGHTING TOWER, NO SALVAGE	EACH	4	4
84200004	REMOVAL OF POLE FOUNDATION	EACH	2	2
84500110	REMOVAL OF LIGHTING CONTROLLER	EACH	1	1
84500120	REMOVAL OF ELECTRIC SERVICE INSTALLATION	EACH	1	1
84500130	REMOVAL OF LIGHTING CONTROLLER FOUNDATION	EACH	1	1
89502300	REMOVE ELECTRIC CABLE FROM CONDUIT	FOOT	22644	22644
X8420510	REMOVAL OF TOWER FOUNDATION	EACH	4	4

MODEL: D:\draft
 FILE NAME: p:\files\caw\berkeley.com\PI\DOT\Documents\DOT_0_csa\District_6\ORD Project\72509\CAD\Sheet\72509-rlt-3-500.dwg

USER NAME = Timothy.Sharp	DESIGNED -	REVISED -
PLOT SCALE = \$SCALE5	DRAWN -	REVISED -
PLOT DATE = 3/19/2026	CHECKED -	REVISED -
	DATE -	REVISED -

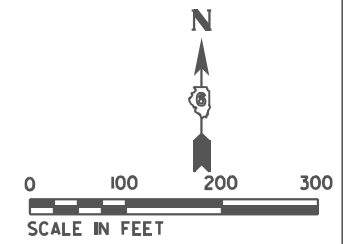
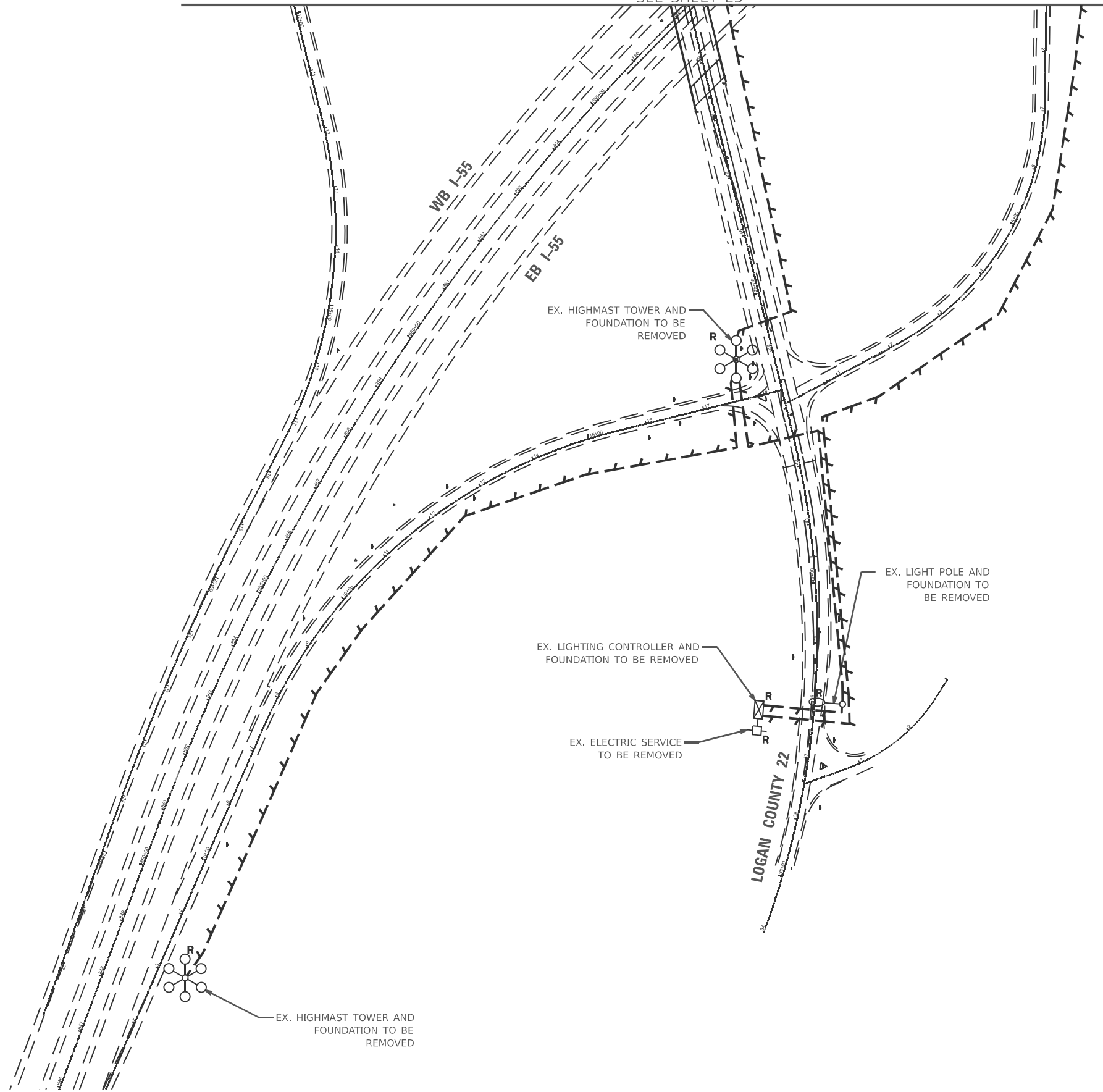
**STATE OF ILLINOIS
DEPARTMENT OF TRANSPORTATION**

SUMMARY OF QUNATITIES

SCALE: SHEET OF SHEETS STA. TO STA.

F.A.I. RTE.	SECTION	COUNTY	TOTAL SHEETS	SHEET NO.
55	(54-1,2)HL-1	LOGAN	8	3
			CONTRACT NO. 72509	
ILLINOIS FED. AID PROJECT				

MATCH LINE STA 50+00
SEE SHEET E3



MODEL: D:\draft
 FILE NAME: p:\illinois-caw-bentley.com\PROJECTS\DOT_0_csa\District_6\ORBD_Projects\72509\CADD\Drawings\72509-ilt-4-Removal.kim1.dwg

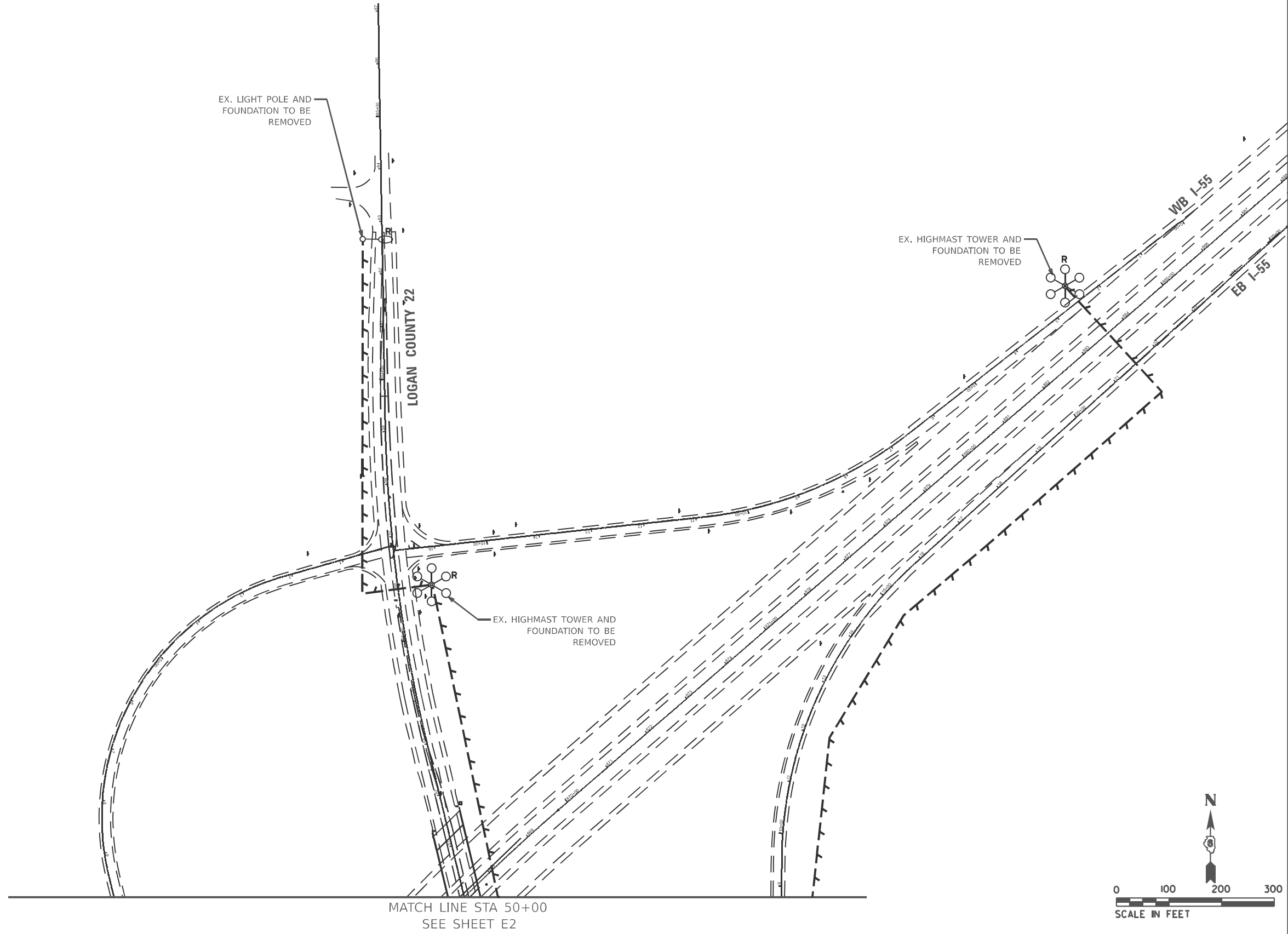
USER NAME = Timothy.Sharp	DESIGNED -	REVISED -
	DRAWN -	REVISED -
PLOT SCALE = \$SCALE\$	CHECKED -	REVISED -
PLOT DATE = 2/9/2026	DATE -	REVISED -

**STATE OF ILLINOIS
DEPARTMENT OF TRANSPORTATION**

**LIGHTING REMOVAL PLAN
I-55 AND BROADWELL RD.**

SCALE: SHEET OF SHEETS STA. TO STA.

F.A.I. RTE.	SECTION	COUNTY	TOTAL SHEETS	SHEET NO.
55	(54-1,2)HL-1	LOGAN	8	4
CONTRACT NO. 72509				
ILLINOIS FED. AID PROJECT				



MODEL: D:\draft
 FILE NAME: p:\illinois-caw-bentley.com\PROJECTS\DOT_0_csa\District_6\ORBD_Projects\72509\CADD\Drawings\72509-rlt-5-Plan\I-55-Plan\I-55-Plan.dwg

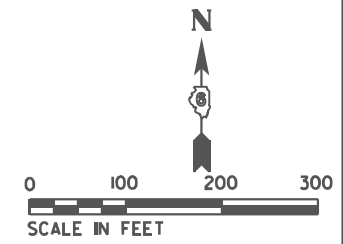
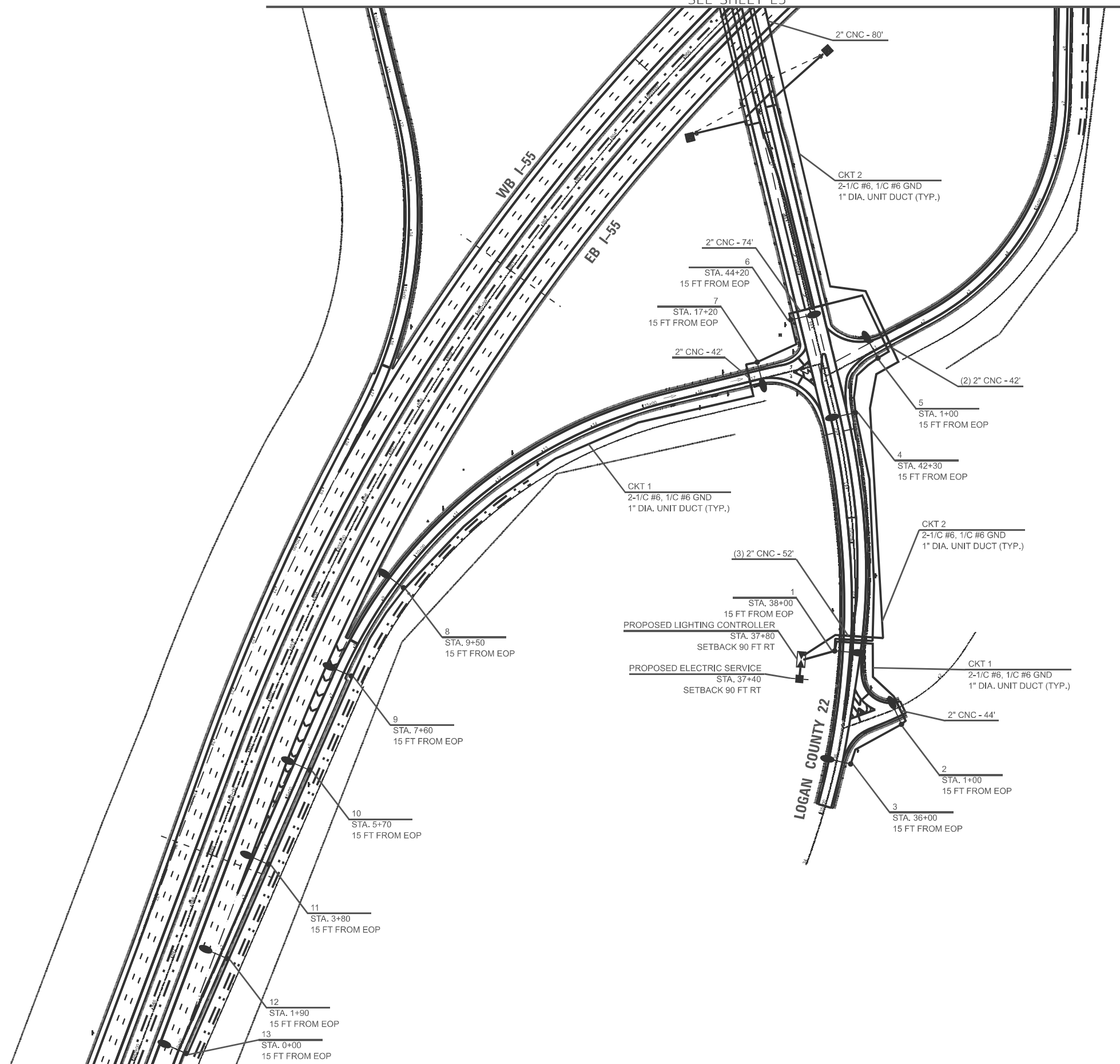
USER NAME = Timothy.Sharp	DESIGNED -	REVISED -
	DRAWN -	REVISED -
PLOT SCALE = \$SCALES	CHECKED -	REVISED -
PLOT DATE = 2/9/2026	DATE -	REVISED -

STATE OF ILLINOIS
DEPARTMENT OF TRANSPORTATION

LIGHTING REMOVAL PLAN I-55 AND BROADWELL RD.			
SCALE:	SHEET	OF SHEETS	STA. TO STA.

F.A.I. RTE.	SECTION	COUNTY	TOTAL SHEETS	SHEET NO.
55	(54-1,2)HL-1	LOGAN	8	5
CONTRACT NO. 72509				
		ILLINOIS	FED. AID PROJECT	

MATCH LINE STA 50+00
SEE SHEET E5



MODEL: D:\draft
 FILE NAME: p:\illinois\work\72509\72509\DOT_0_cad\Drawings\DOT_0_cad\Drawings\72509-11-64-light01.dwg

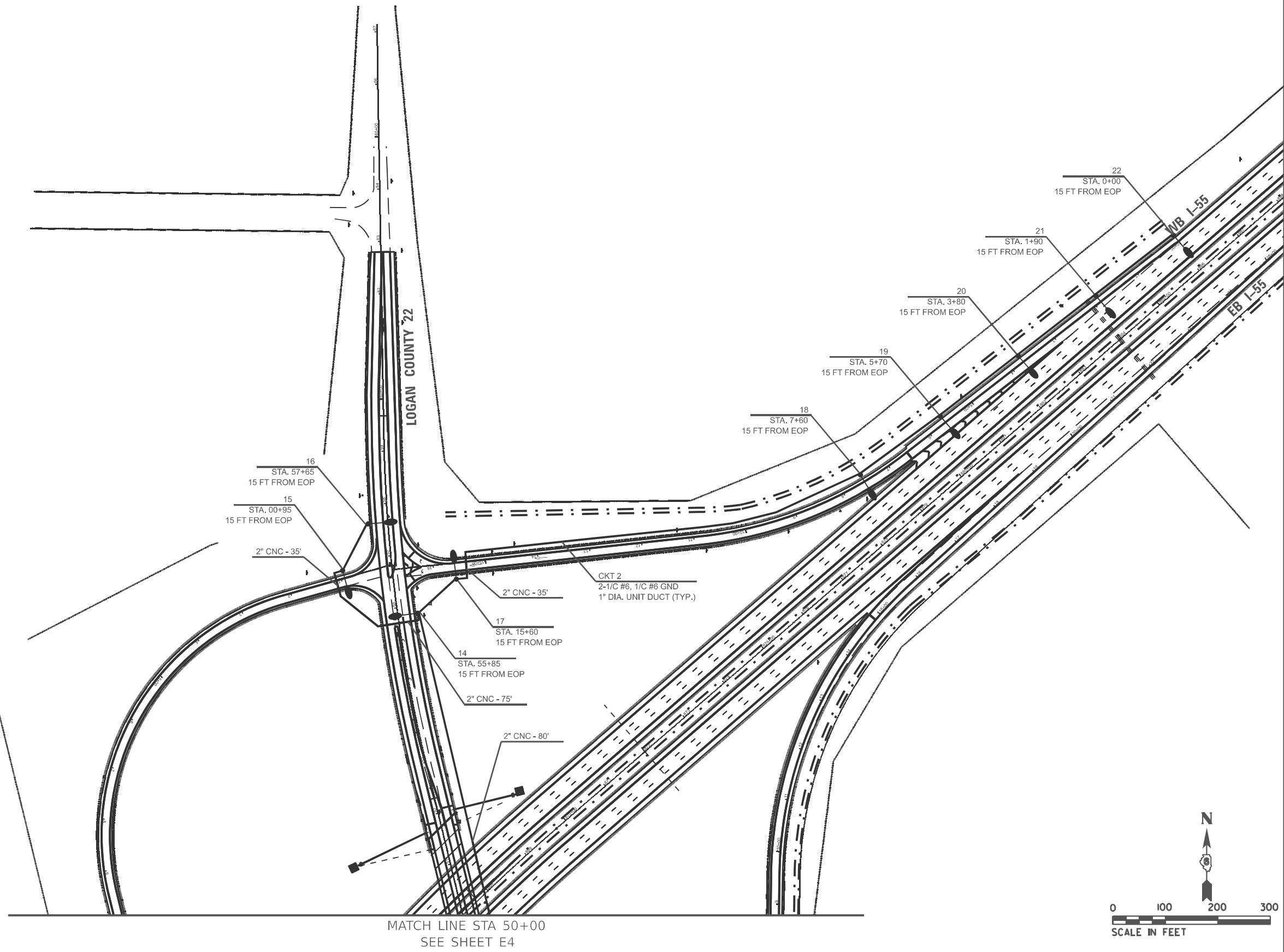
USER NAME = Timothy.Sharp	DESIGNED -	REVISED -
	DRAWN -	REVISED -
PLOT SCALE = \$SCALE	CHECKED -	REVISED -
PLOT DATE = 2/9/2026	DATE -	REVISED -

**STATE OF ILLINOIS
DEPARTMENT OF TRANSPORTATION**

**PROPOSED LIGHTING PLAN
I-55 AND BROADWELL RD.**

SCALE: SHEET OF SHEETS STA. TO STA.

F.A.I. RTE.	SECTION	COUNTY	TOTAL SHEETS	SHEET NO.
55	(54-1,2)HL-1	LOGAN	8	6
CONTRACT NO. 72509				
ILLINOIS FED. AID PROJECT				



MODEL: D:\draft\...
 FILE NAME: ...
 PROJECT: 6080D - Project: 72509 - CAD Data: I-55 - Sheet: 72509 - Sheet: 74 - Light02.dwg

USER NAME = Timothy.Sharp	DESIGNED -	REVISED -
	DRAWN -	REVISED -
PLOT SCALE = \$SCALE\$	CHECKED -	REVISED -
PLOT DATE = 2/9/2026	DATE -	REVISED -

STATE OF ILLINOIS
DEPARTMENT OF TRANSPORTATION

PROPOSED LIGHTING PLAN			
I-55 AND BROADWELL RD.			
SCALE:	SHEET	OF SHEETS	STA. TO STA.

F.A.I. RTE.	SECTION	COUNTY	TOTAL SHEETS	SHEET NO.
55	(54-1,2)HL-1	LOGAN	8	7
CONTRACT NO. 72509				
		ILLINOIS	FED. AID PROJECT	

Project

Date	Contract Number	Section Number	County
09/22/25	72509		Logan

Marked Route Number	Municipality
I-55	

Roadway

Lane Width (see note 4)	Number and Direction of lanes	Median Width	Surface Classification	Q-Zero Value
16	1 - In One Direction	N/A	R3	0.07

Structure

Mounting Height	Arm Length	Set-Back (see note 1)	Number of Luminaires
35	15	15	1

Luminaire

Description	Transverse Distribution	Lateral Distribution
Roadway Luminaire Output Designation G	Type III	Medium

Total Light Loss Factor (LLF)	B-U-G Rating	Shields	Dimming Protocol
Refer to Notes 6 and 7	U=0	N/A	0-10V

Layout

Spacing	Configuration
190	Single Sided

Performance (see notes 5 and 6)

Average Illuminance, E_{AVE} (fc)	Uniformity Ratio, E_{AVE}/E_{MIN}
0.8	3.0

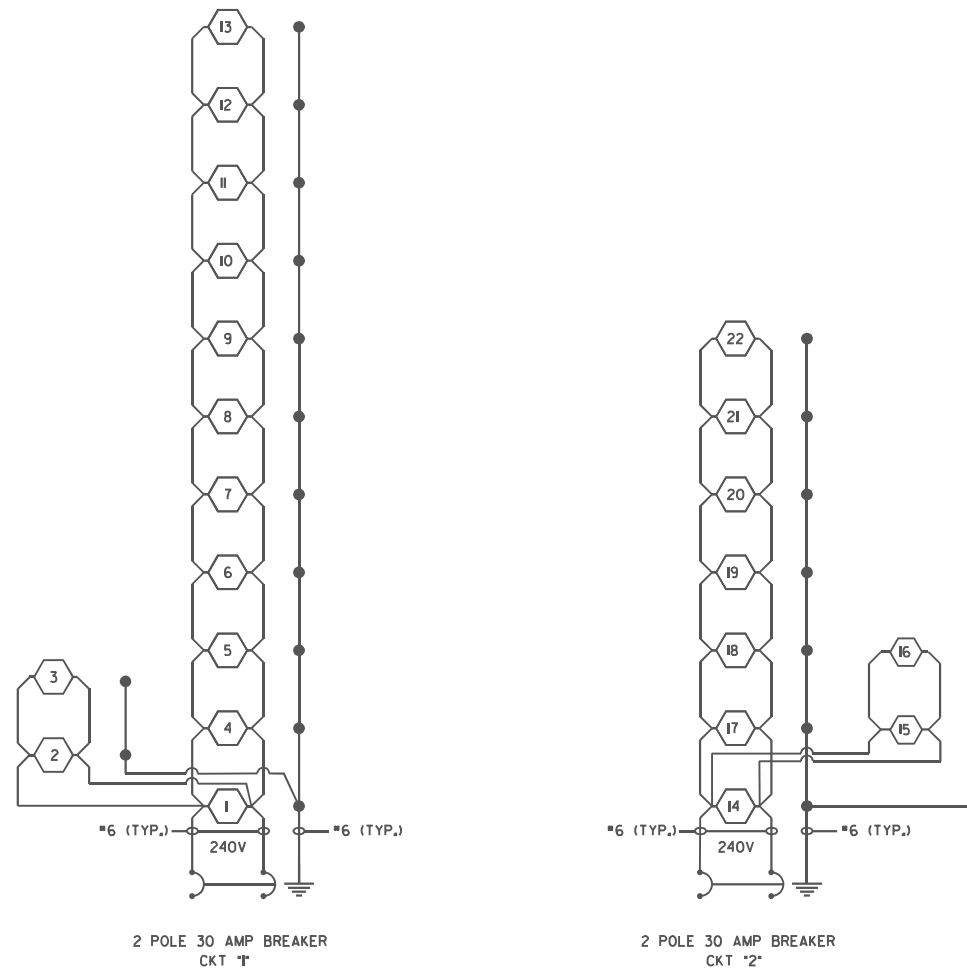
Average Luminance, L_{AVE} (cd/m ²)	Uniformity Ratio, L_{AVE}/L_{MIN}	Uniformity Ratio, L_{MAX}/L_{MIN}	Veiling Luminance Ratio, L_V/L_{AVE}
N/A	N/A	N/A	0.3

Light Trespass (see notes 5 and 7)

Distance to ROW (behind pole)	Max. Horizontal Illuminance at ROW, E_H	Max. Vertical Illuminance at ROW, E_V
N/A	N/A	N/A

Notes

1. Set-Back is from Edge of Pavement (white line).
2. Lighting calculations shall be performed with all luminaires oriented toward and perpendicular to the roadway.
3. Performance requirements shall be the minimum acceptable standards of photometric performance for the luminaire, based on the given conditions listed above.
4. Lane width is the width of each **individual** lane, not to be confused with total roadway width.
5. Compliance with performance criteria shall be held to one significant digit.
6. Photometric calculations for roadways shall be performed with a total light loss factor of 0.7.
7. Light trespass calculations shall be performed with a total light loss factor of 1.0 and with horizontal calculations performed at grade and vertical calculations performed with calculation points located three feet above grade.
8. Luminaire performance table is intended to define the luminaire and does not necessarily match any specific roadway geometry, mounting height, setback, or arm length.



PROPOSED ROADWAY LIGHTING CONTROLLER
LOGAN COUNTY 22 AT STA. 37+80
PEDESTAL MOUNT, 240V

LEGEND

- PROPOSED LUMINAIRE, LED, ROADWAY, OUTPUT DESIGNATION G.
- GROUND ROD.

NOTES:

1. ALL NECESSARY REVISIONS TO THE WIRING SHOWN ON THIS SHEET SHALL BE MADE AT NO ADDITIONAL COST TO THE DEPARTMENT AND TO THE SATISFACTION OF THE ENGINEER.

Printed 09/22/25

BDE 5630 (Draft)

MODEL: D:\draft FILE NAME: p:\illinois\dot\documents\DOT_0_csa\District_6\ORD_Project\72509\CAD\Drawings\72509-11-24-Wiring_Diagrams.dgn

USER NAME = Timothy.Sharp	DESIGNED -	REVISED -
	DRAWN -	REVISED -
PLOT SCALE = \$SCALE	CHECKED -	REVISED -
PLOT DATE = 2/9/2026	DATE -	REVISED -

STATE OF ILLINOIS
DEPARTMENT OF TRANSPORTATION

WIRING DIAGRAMS AND LUMINAIRE PERFORMANCE TABLE

SCALE: SHEET OF SHEETS STA. TO STA.

F.A.I. RTE.	SECTION	COUNTY	TOTAL SHEETS	SHEET NO.
55	(54-1,2)HL-1	LOGAN	8	8
CONTRACT NO. 72509				
ILLINOIS FED. AID PROJECT				