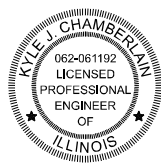


ATLAS TECHNICAL CONSULTANTS LLC
 KYLE J. CHAMBERLAIN, P.E.
 #062-061192

[Signature]

DATE: 03/20/2026
 SIGNATURE AND SEAL



EXPIRATION DATE: 11-30-2027

STATE OF ILLINOIS
 DEPARTMENT OF TRANSPORTATION

**PROPOSED
 HIGHWAY PLANS**

**FAI ROUTE 72, 172 (I 72, 172)
 SECTION (1-2)SR, (75-1)SR-1
 PROJECT NHPP-VI6W (201)
 SHOULDER REPAIR
 ADAMS, PIKE COUNTY**

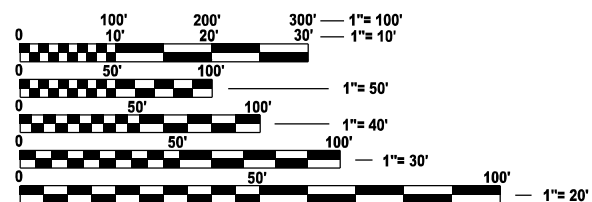
C-96-047-26

FOR INDEX OF SHEETS, SEE SHEET NO. 2

**ROADWAY CLASSIFICATION - INTERSTATE
 AVERAGE DAILY TRAFFIC - YEAR 2025**

**I-72:
 ADT = 8,450
 SU = 3.25%
 MU = 31.95%
 PV = 64.79%**

**I-172:
 ADT = 12,500
 SU = 3.20%
 MU = 13.20%
 PV = 83.60%**



FULL SIZE PLANS HAVE BEEN PREPARED USING STANDARD ENGINEERING SCALES. REDUCED SIZED PLANS WILL NOT CONFORM TO STANDARD SCALES. IN MAKING MEASUREMENTS ON REDUCED PLANS, THE ABOVE SCALES MAY BE USED.

J.U.L.I.E.
 JOINT UTILITY LOCATION INFORMATION FOR EXCAVATION
 1-800-892-0123
 OR 811

**PROJECT ENGINEER JON KELLEY (217) 785-2739
 PROJECT MANAGER CHRIS SIEFERT (217) 524-7940**

CONTRACT NO. 72639

BEGIN PROJECT
 I-172 NB
 STA. 76 + 00

BEGIN PROJECT
 I-172 SB
 STA. 3 + 00

PROJECT OMISSION
 STA. 1071 + 59.32 TO
 STA. 1073 + 10.68

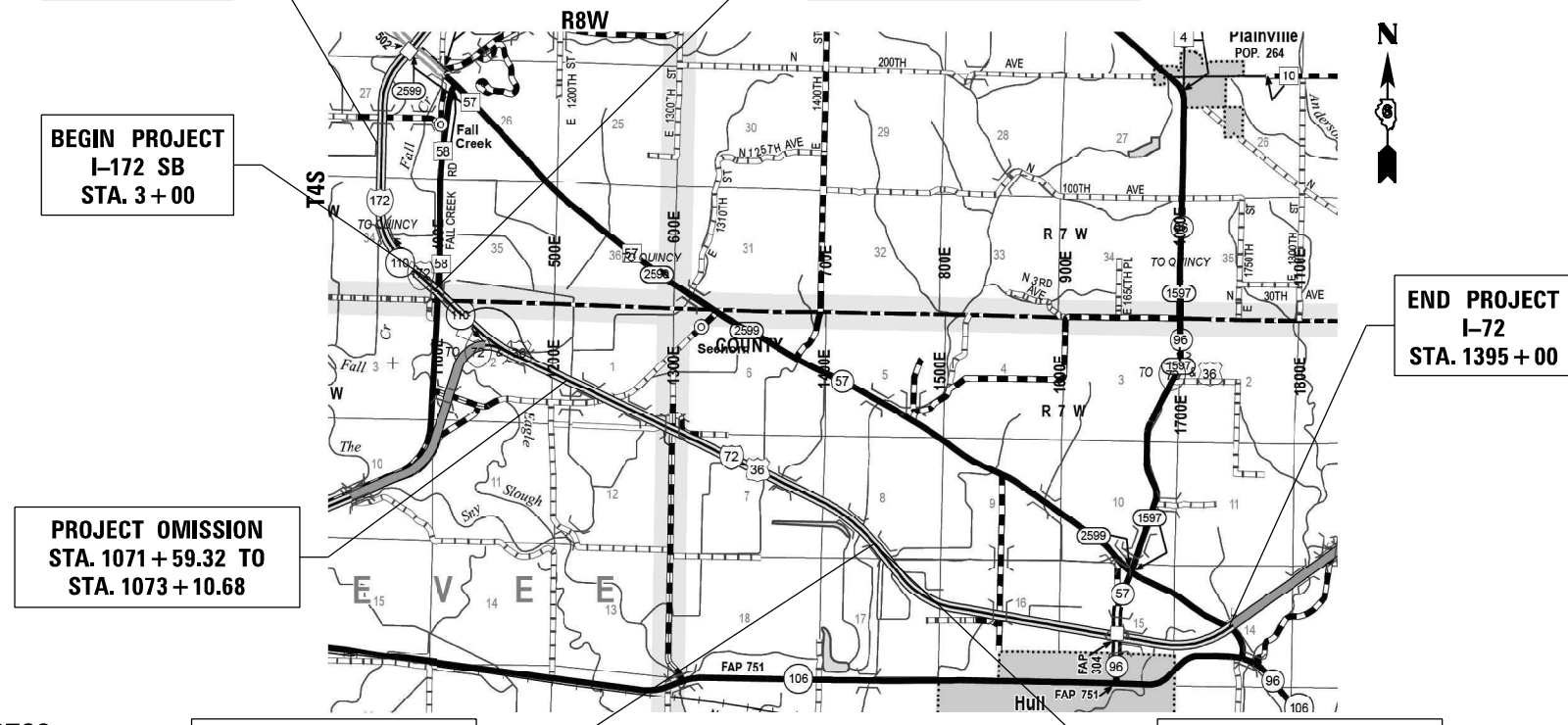
PROJECT OMISSION
 I-72 WB
 STA. 1212 + 50.00 TO
 STA. 1238 + 46.00

STATION EQUATION
 STA. 0 + 00.20, I-172 =
 STA. 999 + 99.38, I-72

END PROJECT
 I-72
 STA. 1395 + 00

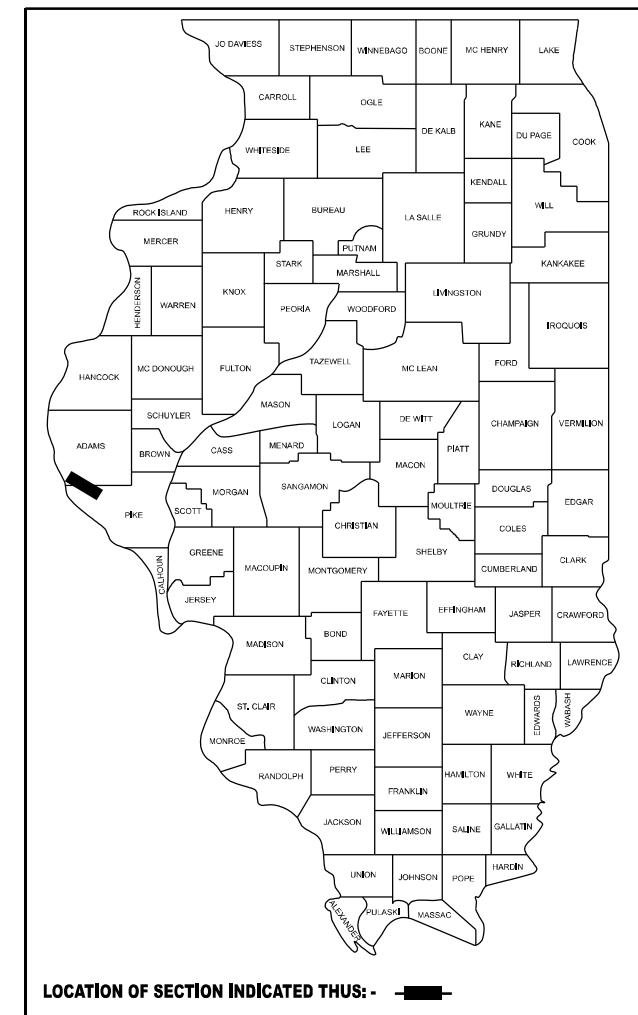
GROSS LENGTH = 47,400 FT. = 8.98 MILE
 NET LENGTH = 44,752 FT. = 8.48 MILE

PROJECT OMISSION
 I-72 EB
 STA. 1210 + 85.00 TO
 STA. 1237 + 75.00



F.A.I. RTE.	SECTION	COUNTY	TOTAL SHEETS	SHEET NO.
72, 172	(1-2)SR, (75-1)SR-1	ADAMS, PIKE	28	1
		ILLINOIS	CONTRACT NO. 72639	

D-96-017-26



STATE OF ILLINOIS
 DEPARTMENT OF TRANSPORTATION

SUBMITTED March 20, 2026
Teresa C. Price
 REGIONAL ENGINEER

May 8, 2026
[Signature]
 ENGINEER OF DESIGN AND ENVIRONMENT

May 8, 2026
[Signature]
 DIRECTOR OF HIGHWAYS PROJECT IMPLEMENTATION

**PRINTED BY THE AUTHORITY
 OF THE STATE OF ILLINOIS**

INDEX OF SHEETS

SHEET NO.	DESCRIPTION
1	COVER SHEET
2	INDEX OF SHEETS, STANDARDS, GENERAL NOTES
3-4	SUMMARY OF QUANTITIES
5-6	SCHEDULE OF QUANTITIES
7	ALIGNMENT OVERVIEW
8-12	ALIGNMENT PLANS
13	ALIGNMENT SCHEDULE
14-15	TYPICAL SECTIONS
16	IL 96 RAMP DETAILS
17	EMERGENCY MEDIAN CROSS-OVER DETAIL
18	PIPE UNDERDRAIN MARKER DETAIL
19-28	DETOUR PLANS

STANDARDS

STANDARD NO.	DESCRIPTION
642001-03	SHOULDER RUMBLE STRIPS, 16 in.
701101-05	OFF-ROAD OPERATIONS, MULTILANE, 15' (4.5 M) TO 24" (600 MM) FROM PAVEMENT EDGE
701106-02	OFF-ROAD OPERATIONS, MULTILANE, MORE THAN 15' (4.5 M) AWAY
701201-05	LANE CLOSURE, 2L, 2W, DAY ONLY, FOR SPEEDS ≥ 45 MPH
701400-12	APPROACH TO LANE CLOSURE, FREEWAY/EXPRESSWAY
701401-13	LANE CLOSURE, FREEWAY/EXPRESSWAY
701411-09	LANE CLOSURE, MULTILANE, AT ENTRANCE OR EXIT RAMP, FOR SPEEDS ≥ 45 MPH
701426-09	LANE CLOSURE, MULTILANE, INTERMITTENT OR MOVING OPER., FOR SPEEDS ≥ 45 MPH
701451-05	RAMP CLOSURE FREEWAY/EXPRESSWAY
701901-11	TRAFFIC CONTROL DEVICES
780001-05	TYPICAL PAVEMENT MARKINGS

GENERAL NOTES

- THE FOLLOWING APPLICATION RATES WERE USED FOR QUANTITY CALCULATIONS:
TACK COAT EXISTING/MILLED HMA: 0.05 LB/SQ FT
TACK COAT NEW HMA: 0.025 LB/SQ FT
HMA: 112 LB/SQ YD - INCH THICKNESS
AGGREGATES - TYPE B & TYPE C, AGGREGATE WEDGE SHOULDER: 1.6 TONS/ CU YD
- PLAN DIMENSIONS AND DETAILS RELATIVE TO THE EXISTING FACILITIES HAVE BEEN TAKEN FROM EXISTING PLANS AND ARE SUBJECT TO CONTRACTOR VARIATIONS. IT SHALL BE THE CONTRACTOR'S RESPONSIBILITY TO VERIFY SUCH DIMENSIONS AND DETAILS IN THE FIELD. SUCH VARIATIONS SHALL NOT BE A CAUSE FOR ADDITIONAL COMPENSATION DUE TO A CHANGE IN THE SCOPE OF THE WORK. HOWEVER, THE CONTRACTOR WILL BE PAID FOR THE QUANTITY ACTUALLY FURNISHED AT THE BID PRICE FOR THE WORK.
- THE CONTRACTOR SHALL NOTIFY THE DISTRICT 6 BUREAU OF OPERATIONS AT (217) 785-5306 THREE (3) WEEKS PRIOR TO IMPLEMENTING ANY TRAFFIC CONTROL.
- THE DISTRICT 6 BUREAU OF OPERATIONS SHALL BE NOTIFIED BY PHONE (217) 785-5306 AT LEAST FOURTEEN (14) DAYS PRIOR TO PLACEMENT OF FINAL PAVEMENT MARKINGS.
- THE MATERIAL USED FOR AGGREGATE WEDGE SHOULDERS, TYPE B SHALL BE CRUSHED STONE, CRUSHED CONCRETE, OR RAP.

MIXTURE REQUIREMENTS

MIXTURE USE(S):	HMA SHOULDERS (TOP LIFT)	HMA SHOULDERS (LOWER LIFT)
PG:	PG 64-22	PG 64-22
DESIGN AIR VOIDS:	4% @ N50	4% @ N50
MIXTURE COMPOSITION:	IL-9.5	IL-19.0
FRICTION AGGREGATE:	MIX "C"	N/A
MIXTURE WEIGHT:	112 lb/sq*in	112 lb/sq*in
QUALITY MANAGEMENT:	QC/QA	QC/QA
SUBLOT SIZE:	N/A	N/A
MTD REQUIRED:	NO	NO

QC/QA NOTES:

- HMA MIXTURES UTILIZING CRUSHED GRAVEL OR SANDSTONE COURSE AGGREGATE SHALL INCORPORATE AN ANTI-STRIP ADDITIVE ACCORDING TO ARTICLE 1030.05(C). THE ADDITIVE SHALL BE SUFFICIENT TO ACHIEVE A TSR EQUAL TO 0.90 OR GREATER FOR 6 INCH SPECIMENS. IF A LIQUID ADDITIVE IS USED, THE ADDITIVE QUANTITY SHALL BE BETWEEN 0.25% AND 1.0% OF THE TOTAL WEIGHT OF LIQUID ASPHALT. THE MIXTURE SHALL MEET THE MINIMUM CONDITIONED TENSILE STRENGTH REQUIREMENTS DESCRIBED IN ARTICLE 1030.05(C).
- THE ANTI-STRIP ADDITIVE PRODUCT UTILIZED FOR MIX DESIGN VERIFICATION SHALL BE USED FOR MIXTURE PRODUCTION. A CHANGE IN ANTI-STRIP ADDITIVE PRODUCT REQUIRES A REVERIFICATION OF THE TSR AND MINIMUM CONDITIONED TENSILE STRENGTH REQUIREMENTS PRIOR TO MIXTURE PRODUCTION.
- HMA MIXTURES HAVING ABR GREATER THAN 20% INCORPORATING RAP/FRAP MATERIALS CONSISTING OF CRUSHED GRAVEL OR SANDSTONE COARSE AGGREGATE SHALL INCLUDE AN ANTI-STRIP ADDITIVE. WHERE THE RAP/FRAP MATERIALS REQUIRING ANTI-STRIP WERE NOT INCLUDED IN THE INITIAL DESIGN MIX VERIFICATION, A NEW MIX DESIGN IS NOT REQUIRED. HOWEVER, A REVERIFICATION OF THE TSR AND MINIMUM CONDITIONED TENSILE STRENGTH REQUIREMENTS IS REQUIRED PRIOR TO MIXTURE PRODUCTION.
- THIS WORK WILL NOT BE MEASURED FOR PAYMENT. THE COST OF FURNISHING AND INTRODUCING ANTI-STRIPPING ADDITIVES IN THE HMA SHALL BE INCLUDED IN THE CONTRACT UNIT PRICE OF THE HMA ITEM INVOLVED.

**STATE OF ILLINOIS
DEPARTMENT OF TRANSPORTATION
DIVISION OF HIGHWAYS
DISTRICT 6**

EXAMINED March 1, 20 26

J. A. Johnson
ENGINEER OF OPERATIONS

EXAMINED February 27, 20 26

R. P. Swetty
ENGINEER OF PROJECT IMPLEMENTATION

EXAMINED March 2, 20 26

M. V.
ENGINEER OF PROGRAM DEVELOPMENT

MODEL: Named Boundary Sheet H
FILE NAME: c:\bma\pwe-aeasat-007\patrick.friedrich\dms41886\0672639-shi-gen note.dgn



USER NAME = pfriedrich	DESIGNED -	REVISED -
	DRAWN -	REVISED -
	CHECKED -	REVISED -
PLOT DATE = 3/20/2026	DATE -	REVISED -

**STATE OF ILLINOIS
DEPARTMENT OF TRANSPORTATION**

**INDEX OF SHEETS, STANDARDS,
GENERAL NOTES**

SCALE: N.T.S. SHEET 1 OF 1 SHEETS STA. TO STA.

F.A.I. RTE.	SECTION	COUNTY	TOTAL SHEETS	SHEET NO.
72, 172	(1-2)SR, (75-1)SR-1	ADAMS, PIKE	28	2
CONTRACT NO. 72639				
ILLINOIS FED. AID PROJECT				

MODEL: Named Boundary Sheet H
 FILE NAME: c:\bms\pwe\ssast-07\mairi\g\m\dm41886\0672639-sht-SQC-01.dgn

CODE NO.	ITEM	UNIT	TOTAL QUANTITY	PPS# 6-01466-0000	
				NHPP FUNDING	
				90% FED/10% STATE ADAMS COUNTY	90% FED/10% STATE PIKE COUNTY
				ROADWAY	ROADWAY
				0021 RURAL	0021 RURAL
20200100	EARTH EXCAVATION	CU YD	219	44	175
25000200	SEEDING, CLASS 2	ACRE	0.8	0.2	0.6
25000400	NITROGEN FERTILIZER NUTRIENT	POUND	68	14	54
25000500	PHOSPHORUS FERTILIZER NUTRIENT	POUND	68	14	54
25000600	POTASSIUM FERTILIZER NUTRIENT	POUND	68	14	54
25000700	AGRICULTURAL GROUND LIMESTONE	TON	1.5	0.3	1.2
25100115	MULCH, METHOD 2	ACRE	0.8	0.2	0.6
40600290	BITUMINOUS MATERIALS (TACK COAT)	POUND	100,770	9,716	91,054
44000165	HOT-MIX ASPHALT SURFACE REMOVAL, 4"	SQ YD	148,417	14,212	134,205
48102100	AGGREGATE WEDGE SHOULDER, TYPE B	TON	113	25	88
48203013	HOT-MIX ASPHALT SHOULDERS, 4"	SQ YD	884	186	698
48203100	HOT-MIX ASPHALT SHOULDERS	TON	33,441	3,224	30,217
63500105	DELINEATORS	EACH	12	4	8
64200116	SHOULDER RUMBLE STRIPS, 16 INCH	FOOT	168,276	15,114	153,162
67000400	ENGINEER'S FIELD OFFICE, TYPE A	CAL MO	6	2	4



USER NAME = mairiglynn	DESIGNED -	REVISED -
	DRAWN -	REVISED -
	CHECKED -	REVISED -
PLOT DATE = 3/19/2026	DATE -	REVISED -

**STATE OF ILLINOIS
 DEPARTMENT OF TRANSPORTATION**

SUMMARY OF QUANTITIES			
SCALE: N.T.S.	SHEET 1	OF 2 SHEETS	STA. TO STA.

F.A.I. RTE.	SECTION	COUNTY	TOTAL SHEETS	SHEET NO.
72, 172	(1-2)SR, (75-1)SR-1	ADAMS, PIKE	28	3
CONTRACT NO. 72639				
ILLINOIS FED. AID PROJECT				

MODEL: Named Boundary Sheet H
 FILE NAME: c:\bms\pwe-ssast-007\mairi.g\mndms41886\0672639-sht-SQC-02.dgn

CODE NO.	ITEM	UNIT	TOTAL QUANTITY	PPS# 6-01466-0000	
				NHPP FUNDING	
				90% FED/10% STATE	90% FED/10% STATE
				ADAMS COUNTY	PIKE COUNTY
				ROADWAY	ROADWAY
				0021	0021
				RURAL	RURAL
67100100	MOBILIZATION	L SUM	1	0,1	0,9
70100420	TRAFFIC CONTROL AND PROTECTION, STANDARD 701411	EACH	6		6
70100450	TRAFFIC CONTROL AND PROTECTION, STANDARD 701201	L SUM	1		1
70100800	TRAFFIC CONTROL AND PROTECTION, STANDARD 701401	L SUM	1	0,1	0,9
70100820	TRAFFIC CONTROL AND PROTECTION, STANDARD 701451	L SUM	1		1
70107025	CHANGEABLE MESSAGE SIGN	CAL DA	172	54	118
* 78009005	MODIFIED URETHANE PAVEMENT MARKING-LINE 5"	FOOT	177,961	15,799	162,162
X4820110	HOT-MIX ASPHALT SHOULDER REMOVAL AND REPLACEMENT	SQ YD	7,500	750	6,750
X6010100	CLEANING UNDERDRAIN OUTLETS	EACH	164	4	160
X6670201	OUTLET MARKER	EACH	164	4	160
X7200203	DETOUR SIGNING	L SUM	1	0,1	0,9
Ø Z0076600	TRAINEES	HOUR	2500	2500	
Ø Z0076604	TRAINEES TRAINING PROGRAM GRADUATE	HOUR	2500	2500	

* SPECIALTY ITEM Ø 0042

REV - MS

	USER NAME = mairiglynn	DESIGNED -	REVISED -	STATE OF ILLINOIS DEPARTMENT OF TRANSPORTATION	SUMMARY OF QUANTITIES	F.A.I. RTE.	SECTION	COUNTY	TOTAL SHEETS	SHEET NO.		
		DRAWN -	REVISED -			72, 172	(1-2)SR, (75-1)SR-1	ADAMS, PIKE	28	4		
		CHECKED -	REVISED -			CONTRACT NO. 72639						
	PLOT DATE = 3/19/2026	DATE -	REVISED -			SCALE: N.T.S.	SHEET 2 OF 2 SHEETS	STA.	TO STA.	ILLINOIS FED. AID PROJECT		



STATION EQUATION
STA. 0+00.20 (I-172) = STA. 999+99.38 (I-72)

BEGIN IMPROVEMENT STA. 76+00.00
NORTHBOUND

BEGIN IMPROVEMENT STA. 3+00.00
SOUTHBOUND

END IMPROVEMENT STA. 1395+00.00



PROJECT OMISSION STA. 1071+59.32 TO 1073+10.68

WEST BOUND PROJECT OMISSION STA. 1212+50.00 TO 1238+46.00
EAST BOUND PROJECT OMISSION STA. 1210+85.00 TO 1237+75.00

NOTES:
1. SEE SHEETS 8 TO 13 FOR DETAILED ALIGNMENT SHEETS AND DATA.

MODEL: Named Boundary Sheet H
FILE NAME: c:\bms\pwe-ssast-07\patrick.friedrich\dms41886\0672639-shft-alignment overview.dgn



USER NAME = mairglynn	DESIGNED -	REVISED -
	DRAWN -	REVISED -
	CHECKED -	REVISED -
PLOT DATE = 3/19/2026	DATE -	REVISED -

STATE OF ILLINOIS
DEPARTMENT OF TRANSPORTATION

ALIGNMENT OVERVIEW

SCALE: N.T.S. SHEET 1 OF 1 SHEETS STA. TO STA.

F.A.I. RTE.	SECTION	COUNTY	TOTAL SHEETS	SHEET NO.
72, 172	(1-2)SR, (75-1)SR-1	ADAMS, PIKE	28	7
CONTRACT NO. 72639				
ILLINOIS FED. AID PROJECT				



NOTES:

1. FOR ALIGNMENT DATA SEE ALIGNMENT SCHEDULE ON SHEET 13.



NOTES:

1. FOR ALIGNMENT DATA SEE ALIGNMENT SCHEDULE ON SHEET 13.

MODEL: Named Boundary Sheet H
FILE NAME: c:\bms\pwe-ssast-07\dauid.bnusch\dms41885\0672639-sh-border.dgn



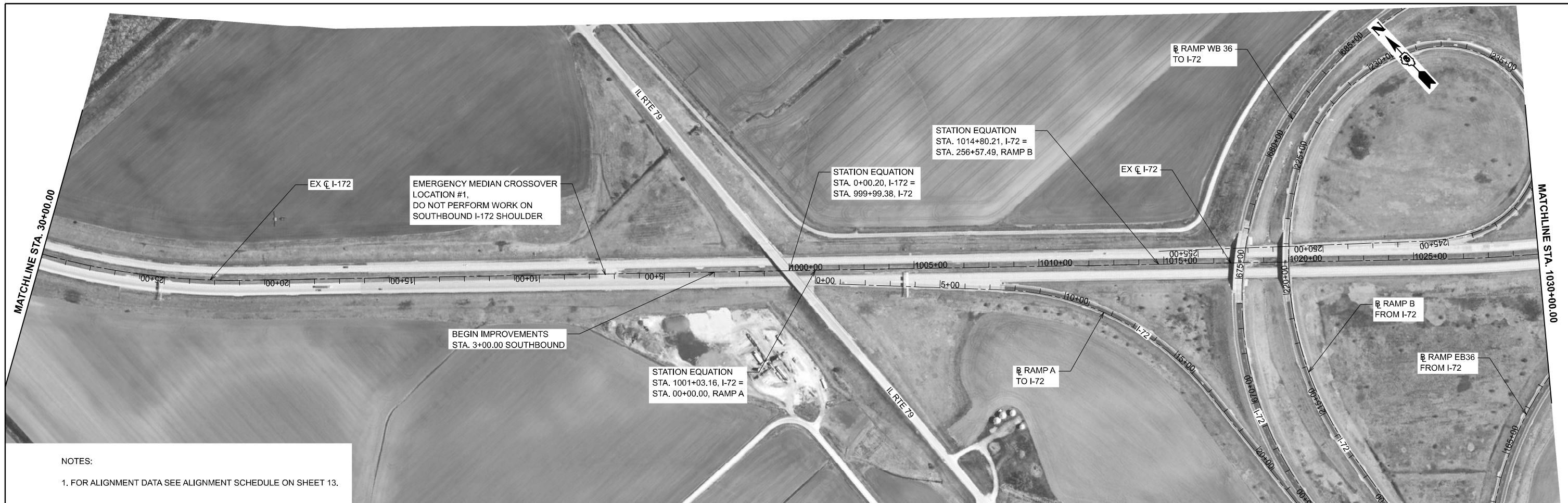
USER NAME =	DESIGNED -	REVISED -
	DRAWN -	REVISED -
	CHECKED -	REVISED -
PLOT DATE =	DATE -	REVISED -

**STATE OF ILLINOIS
DEPARTMENT OF TRANSPORTATION**

ALIGNMENT PLANS

SCALE: 1"=200' SHEET 1 OF 5 SHEETS STA. 145+00.00 TO STA. 30+00.00

F.A.I. RTE.	SECTION	COUNTY	TOTAL SHEETS	SHEET NO.
72, 172	(1-2)SR, (75-1)SR-1	ADAMS, PIKE	28	8
CONTRACT NO. 72639				
ILLINOIS FED. AID PROJECT				



NOTES:

1. FOR ALIGNMENT DATA SEE ALIGNMENT SCHEDULE ON SHEET 13.



NOTES:

1. FOR ALIGNMENT DATA SEE ALIGNMENT SCHEDULE ON SHEET 13.

MODEL: Named Boundary, Sheet H
FILE NAME: c:\bms\pwe-ss-east-07\dauid.bnusch\dms41885\0672639-sh-border.dgn



USER NAME =	DESIGNED -	REVISED -
	DRAWN -	REVISED -
	CHECKED -	REVISED -
PLOT DATE =	DATE -	REVISED -

**STATE OF ILLINOIS
DEPARTMENT OF TRANSPORTATION**

ALIGNMENT PLANS

SCALE: 1"=200' SHEET 2 OF 5 SHEETS STA. 30+00.00 TO STA. 1090+00.00

F.A.I. RTE.	SECTION	COUNTY	TOTAL SHEETS	SHEET NO.
72, 172	(1-2)SR, (75-1)SR-1	ADAMS, PIKE	28	9
CONTRACT NO. 72639			ILLINOIS FED. AID PROJECT	



MATCHLINE STA. 1090+00.00

MATCHLINE STA. 1150+00.00

STATION EQUATION
 STA. 1092+00.02, I-72 =
 STA. 756+04.72, RAMP 36 WB

NOTES:
 1. FOR ALIGNMENT DATA SEE ALIGNMENT SCHEDULE ON SHEET 13.



MATCHLINE STA. 1150+00.00

MATCHLINE STA. 1210+00.00

NOTES:
 1. FOR ALIGNMENT DATA SEE ALIGNMENT SCHEDULE ON SHEET 13.

MODEL: Named Boundary, Sheet H
 FILE NAME: c:\bms\pwe-ssast-07\dauid.bnusch\dms41885\0672639-sh-border.dgn

ATLAS	USER NAME =	DESIGNED -	REVISED -	STATE OF ILLINOIS DEPARTMENT OF TRANSPORTATION	ALIGNMENT PLANS			F.A.I. RTE.	SECTION	COUNTY	TOTAL SHEETS	SHEET NO.
		DRAWN -	REVISED -		72, 172	(1-2)SR, (75-1)SR-1	ADAMS, PIKE	28	10			
PLOT DATE =	DATE -	REVISED -	REVISED -		SCALE: 1"=200' SHEET 3 OF 5 SHEETS STA. 1090+00.00 TO STA. 1210+00.00			CONTRACT NO. 72639		ILLINOIS FED. AID PROJECT		



NOTES:

1. FOR ALIGNMENT DATA SEE ALIGNMENT SCHEDULE ON SHEET 13.



NOTES:

1. FOR ALIGNMENT DATA SEE ALIGNMENT SCHEDULE ON SHEET 13.

MODEL: Named Boundary Sheet H
FILE NAME: c:\bms\pwe-ssast-07\dauid.bnusch\dms41885\0672639-sh-border.dgn



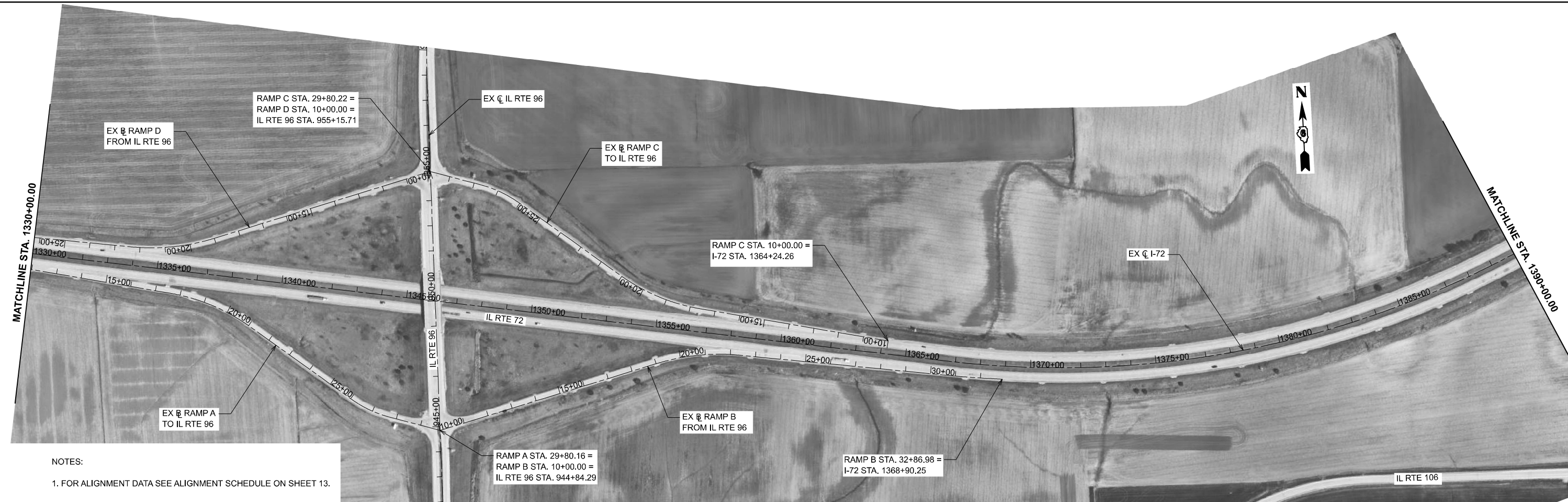
USER NAME =	DESIGNED -	REVISED -
	DRAWN -	REVISED -
	CHECKED -	REVISED -
PLOT DATE =	DATE -	REVISED -

**STATE OF ILLINOIS
DEPARTMENT OF TRANSPORTATION**

ALIGNMENT PLANS

SCALE: 1"=200' SHEET 4 OF 5 SHEETS STA. 1210+00.00 TO STA. 1330+00.00

F.A.I. RTE.	SECTION	COUNTY	TOTAL SHEETS	SHEET NO.
72, 172	(1-2)SR, (75-1)SR-1	ADAMS, PIKE	28	11
CONTRACT NO. 72639				
ILLINOIS FED. AID PROJECT				



NOTES:

1. FOR ALIGNMENT DATA SEE ALIGNMENT SCHEDULE ON SHEET 13.



NOTES:

1. FOR ALIGNMENT DATA SEE ALIGNMENT SCHEDULE ON SHEET 13.

MODEL: Named Boundary, Sheet H
FILE NAME: c:\bms\pwe-ss-east-07\dauid.bnusch\dms41885\0672639-sh-border.dgn

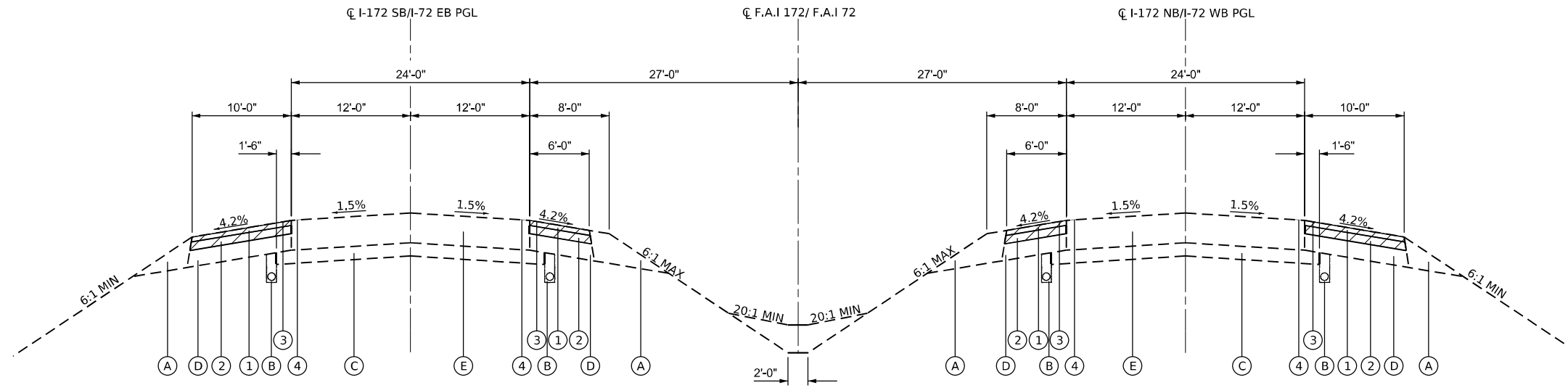
ATLAS	USER NAME =	DESIGNED -	REVISED -	STATE OF ILLINOIS DEPARTMENT OF TRANSPORTATION	ALIGNMENT PLANS			F.A.I. RTE.	SECTION	COUNTY	TOTAL SHEETS	SHEET NO.
	PLOT DATE =	DRAWN -	REVISED -		72, 172	(1-2)SR, (75-1)SR-1	ADAMS, PIKE	28	12	CONTRACT NO. 72639		
				SCALE: 1"=200'	SHEET 5	OF 5	SHEETS	STA. 1330+00.00	TO STA. 1450+00.00	ILLINOIS FED. AID PROJECT		

HORIZONTAL ALIGNMENT CONTROL								
NAD83/2007 ADJ - STATE PLANE WEST ZONE								
POINT TYPE	STATION	NORTHING	EASTING	RADIUS	LENGTH	TANGENT	DELTA/THETA	ROTATION
ALIGNMENT NAME:		E027						
DESCRIPTION:		I 172 MAINLINE						
POT STA EQ	0+00.20 AH =	1128148.985	1977007.240					
PI	2+50.24	1128317.909	1976822.888					
PC	21+69.52	1129614.628	1975407.910					
PI	34+69.82	1130493.146	1974449.272	2864.90	2441.30	1300.30	48°49'26"	RIGHT
PT	46+10.82	1131793.097	1974479.382					
PI	69+99.93	1134181.569	1974534.704					
PC	91+16.06	1136297.127	1974583.641					
ALIGNMENT NAME:		E026						
DESCRIPTION:		I 72 - I 172 MAINLINE						
POT STA EQ	999+99.38 AH	1128148.985	1977007.240					
PI	1016+00.04	1127067.600	1978187.386					
PC	1025+94.98	1126395.458	1978920.957					
PI	1034+71.45	1125803.349	1979567.181	5731.85	1739.47	876.47	17°23'16"	LEFT
PT	1043+34.45	1125431.412	1980360.820					
PI	1069+99.87	1124300.320	1982774.347					
PI	1094+99.68	1123239.381	1985037.850					
PI	1123+99.83	1122008.622	1987663.896					
PI	1149+99.94	1120905.365	1990018.342					
PI	1173+00.17	1119929.358	1992101.242					
PC	1193+59.95	1119055.353	1993966.394					
PI	1210+60.67	1118333.703	1995506.417	7638.13	3346.84	1700.72	25°06'20"	RIGHT
PT	1227+06.79	1117026.815	1996594.761					
PC	1245+23.21	1115631.024	1997757.142					
PI	1259+33.10	1114547.619	1998659.375	3819.28	2701.24	1409.89	40°31'24"	LEFT
PT	1272+24.45	1114310.312	2000049.151					
PI	1295+00.48	1113927.219	2002292.710					
PI	1320+00.47	1113506.398	2004757.020					
PI	1344+00.48	1113102.516	2007122.804					
PC	1366+72.81	1112719.833	2009362.679					
PI	1382+32.54	1112457.158	2010900.131	3819.74	2961.60	1559.73	44°25'25"	LEFT
PT	1396+34.41	1113345.715	2012182.015					
PI	1425+99.24	1115034.738	2014618.698					

ALIGNMENT NAME:		IL96RAMPA						
DESCRIPTION:		IL 96 RAMP A						
POT	10+00.00	1113319.889	2005540.512					
PC	17+60.11	1113152.451	2006281.955					
PI	19+35.28	1113113.865	2006452.823	763.91	344.39	175.17	25°49'49"	RIGHT
PT	21+04.50	1113004.686	2006589.806					
PC	26+04.41	1112693.105	2006980.736					
PI	26+88.23	1112640.863	2007046.283	458.57	165.81	83.82	20°43'01"	LEFT
PT	27+70.22	1112615.185	2007126.073					
POT	29+80.18	1112550.866	2007325.939					
ALIGNMENT NAME:		IL96RAMPD						
DESCRIPTION:		IL 96 RAMP D						
POT	10+00.00	1113582.176	2007341.038					
PC	19+00.44	1113361.772	2006467.991					
PI	20+70.93	1113320.040	2006302.687	848.96	336.50	170.49	22°42'38"	RIGHT
PT	22+36.94	1113345.364	2006134.089					
POT	32+86.94	1113501.324	2005095.742					
ALIGNMENT NAME:		IL96RAMPB						
DESCRIPTION:		IL 96 RAMP B						
POT	10+00.00	1112550.866	2007325.939					
PC	19+00.36	1112771.140	2008198.938					
PI	20+70.85	1112812.851	2008364.247	849.56	336.51	170.49	22°41'42"	RIGHT
PT	22+36.87	1112787.552	2008532.850					
PC	30+66.42	1112664.454	2009353.217					
PI	31+76.73	1112648.085	2009462.300	4062.17	220.55	110.30	03°06'39"	LEFT
PT	32+86.94	1112637.661	2009572.111					
ALIGNMENT NAME:		IL96RAMPC						
DESCRIPTION:		IL 96 RAMP C						
POT	10+00.00	1112812.949	2009126.430					
PC	17+60.11	1112980.483	2008385.008					
PI	19+35.28	1113019.091	2008214.146	763.97	344.39	175.17	25°49'42"	RIGHT
PT	21+04.50	1113128.284	2008077.173					
PC	26+04.46	1113439.930	2007686.236					
PI	26+88.28	1113492.179	2007620.694	458.45	165.81	83.82	20°43'20"	LEFT
PT	27+70.26	1113517.856	2007540.904					
POT	29+80.22	1113582.176	2007341.038					

MODEL: Named Boundary Sheet H
FILE NAME: c:\bms\pwe-ss-east-07\mairi.gly\mairi.dms4\1886\0672639-sh-alignmnet_scheduled.dgn

	USER NAME = mairiglynn	DESIGNED -	REVISED -	STATE OF ILLINOIS DEPARTMENT OF TRANSPORTATION	ALIGNMENT SCHEDULE	F.A.I. RTE.	SECTION	COUNTY	TOTAL SHEETS	SHEET NO.
	PLOT DATE = 3/9/2026	CHECKED -	REVISED -			72, 172	(1-2)SR, (75-1)SR-1	ADAMS, PIKE	28	13
SCALE: N.T.S. SHEET 1 OF 1 SHEETS STA. TO STA.						ILLINOIS FED. AID PROJECT CONTRACT NO. 72639				



TYPICAL TANGENT SECTION

STA. 0+00.20 TO STA. 19+77.74
 STA. 48+03.02 TO STA. 76+00.00
 STA. 999+99.80 TO STA. 1024+61.86
 STA. 1044+67.98 TO STA. 1071+59.32
 STA. 1073+10.68 TO STA. 1192+26.60
 STA. 1238+46.00 TO STA. 1243+82.01
 STA. 1273+64.89 TO STA. 1365+32.76
 STA. 1396+34.41 TO STA. 1398+00.00

PROPOSED LEGEND

- (A) EXISTING AGGREGATE SHOULDER, TYPE B
- (B) EXISTING PIPE UNDERDRAIN, 4"
- (C) EXISTING STABILIZED SUB-BASE, 4"
- (D) EXISTING BITUMINOUS SHOULDER, 9"
- (E) EXISTING C.R.P.C. CONCRETE PAVEMENT, 9"
- (F) EXISTING BITUMINOUS SHOULDER, 8"
- (G) EXISTING S.R.P.C. CONCRETE PAVEMENT, 8"
- (1) PROPOSED HMA SHOULDERS, 1.5"
- (2) PROPOSED HMA SHOULDERS, 2.5"
- (3) PROPOSED SHOULDER RUMBLE STRIP, 16"
- (4) PROPOSED PAVEMENT MARKINGS, PER STANDARD
- HMA SURFACE REMOVAL, 4"

STATION EQUATION

STA. 00+00.20 (I-172) BK =
 STA. 999+99.38 (I-72) AH

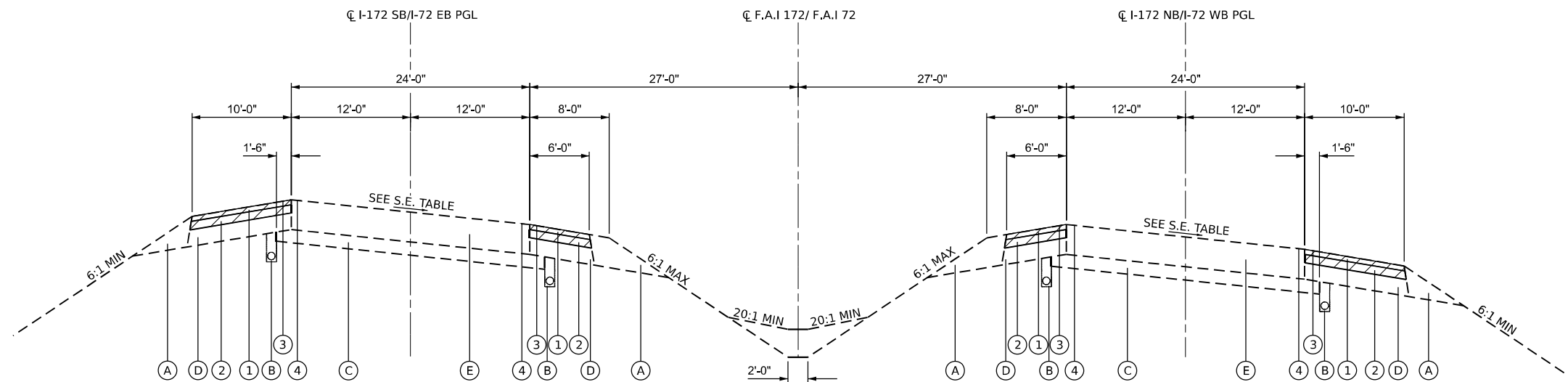
OMISSIONS

STA. 1071+59.32 TO STA. 1073+10.68
 WESTBOUND: STA. 1212+50.00 TO STA. 1238+46.00
 EASTBOUND: STA. 1210+85.00 TO STA. 1237+75.00

NOTE: LANE WIDTHS VARY BETWEEN
 STA. 1024+61.86 TO STA. 1092+00.00

SUPERELEVATION TABLE

STARTING STATION	PAVEMENT	INNER SHOULDER	OUTER SHOULDER
19+77.74	2.6%	4.2%	4.2%
1192+26.60	3.3%	3.7%	4.2%
1243+82.01	4.4%	2.6%	4.4%
1365+32.76	6.0%	1.0%	6.0%



TYPICAL SUPERELEVATED SECTION

STA. 19+77.74 TO STA. 48+03.02
 STA. 1024+61.08 TO STA. 1044+67.98
 STA. 1192+26.60 TO STA. 1210+85.00
 STA. 1243+82.01 TO STA. 1273+64.89
 STA. 1365+32.76 TO STA. 1396+34.41

MODEL: Named Boundary Sheet H
 FILE NAME: c:\bms\pwe-ssast-07\mairi.glynn\dms41886\0672639-sh-typical.dgn



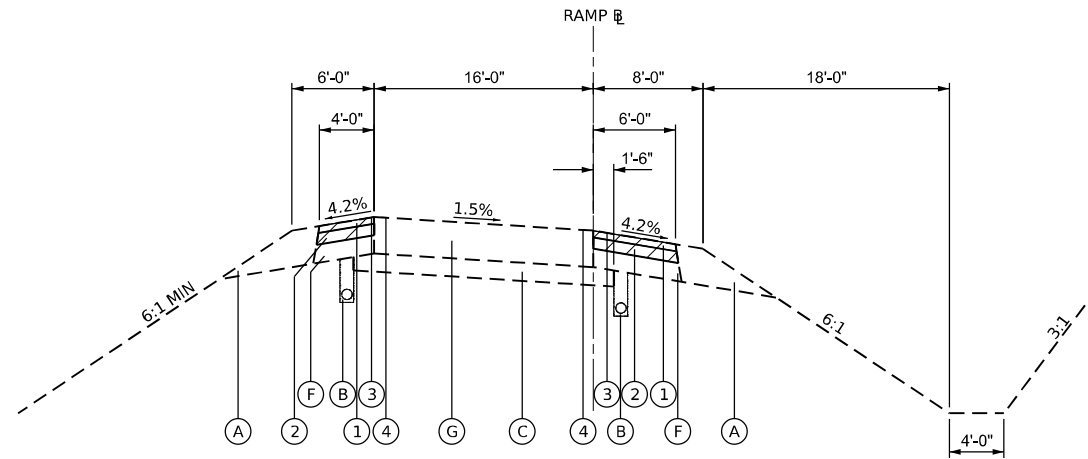
USER NAME = mairi.glynn	DESIGNED -	REVISED -
	DRAWN -	REVISED -
	CHECKED -	REVISED -
PLOT DATE = 12/15/2025	DATE -	REVISED -

STATE OF ILLINOIS
 DEPARTMENT OF TRANSPORTATION

TYPICAL SECTIONS

SCALE: N.T.S. SHEET 1 OF 2 SHEETS STA. TO STA.

F.A.I. RTE.	SECTION	COUNTY	TOTAL SHEETS	SHEET NO.
72, 172	(1-2)SR, (75-1)SR-1	ADAMS, PIKE	28	14
CONTRACT NO. 72639				
ILLINOIS FED. AID PROJECT				



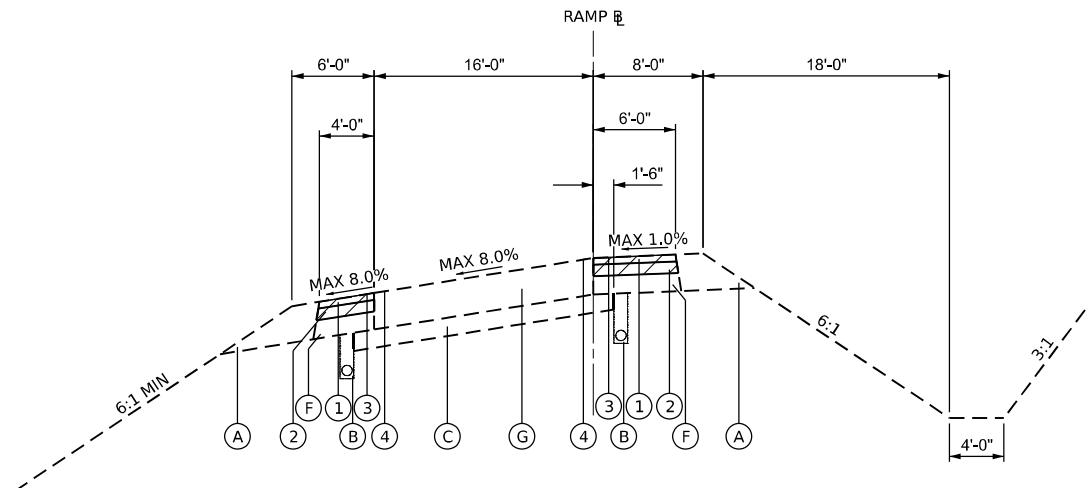
**IL. RTE 96 INTERCHANGE RAMPS
TYPICAL TANGENT SECTION**

RAMP A
STA. 14+01.64 TO STA. 16+20.12
STA. 22+32.50 TO STA. 24+92.50
STA. 28+82.30 TO STA. 29+56.21

RAMP B
STA. 11+50.00 TO STA. 17+77.03

RAMP C
STA. 14+01.63 TO STA. 16+60.12
STA. 22+32.50 TO STA. 24+92.50
STA. 28+82.30 TO STA. 29+56.21

RAMP D
STA. 11+50.00 TO STA. 17+77.03



**IL. RTE 96 INTERCHANGE RAMPS
TYPICAL SUPERELEVATED SECTION**

RAMP A
STA. 16+20.12 TO STA. 22+32.50
STA. 24+92.50 TO STA. 28+82.30

RAMP B
STA. 17+77.03 TO STA. 23+36.86

RAMP C
STA. 16+60.12 TO STA. 22+32.50
STA. 24+92.50 TO STA. 28+82.30

RAMP D
STA. 17+77.03 TO STA. 23+36.86

PROPOSED LEGEND

- (A) EXISTING AGGREGATE SHOULDER, TYPE B
- (B) EXISTING PIPE UNDERDRAIN, 4"
- (C) EXISTING STABILIZED SUB-BASE, 4"
- (D) EXISTING BITUMINOUS SHOULDER, 9"
- (E) EXISTING C.R.P.C. CONCRETE PAVEMENT, 9"
- (F) EXISTING BITUMINOUS SHOULDER, 8"
- (G) EXISTING S.R.P.C. CONCRETE PAVEMENT, 8"
- ① PROPOSED HMA SHOULDERS, 1.5"
- ② PROPOSED HMA SHOULDERS, 2.5"
- ③ PROPOSED SHOULDER RUMBLE STRIP, 16"
- ④ PROPOSED PAVEMENT MARKINGS, PER STANDARD
- HMA SURFACE REMOVAL, 4"

MODEL: Named Boundary Sheet H
FILE NAME: c:\bms\pwe-ss-east-07\mairi\g\m\dm\41886\0672639-shit-typical-02.dgn



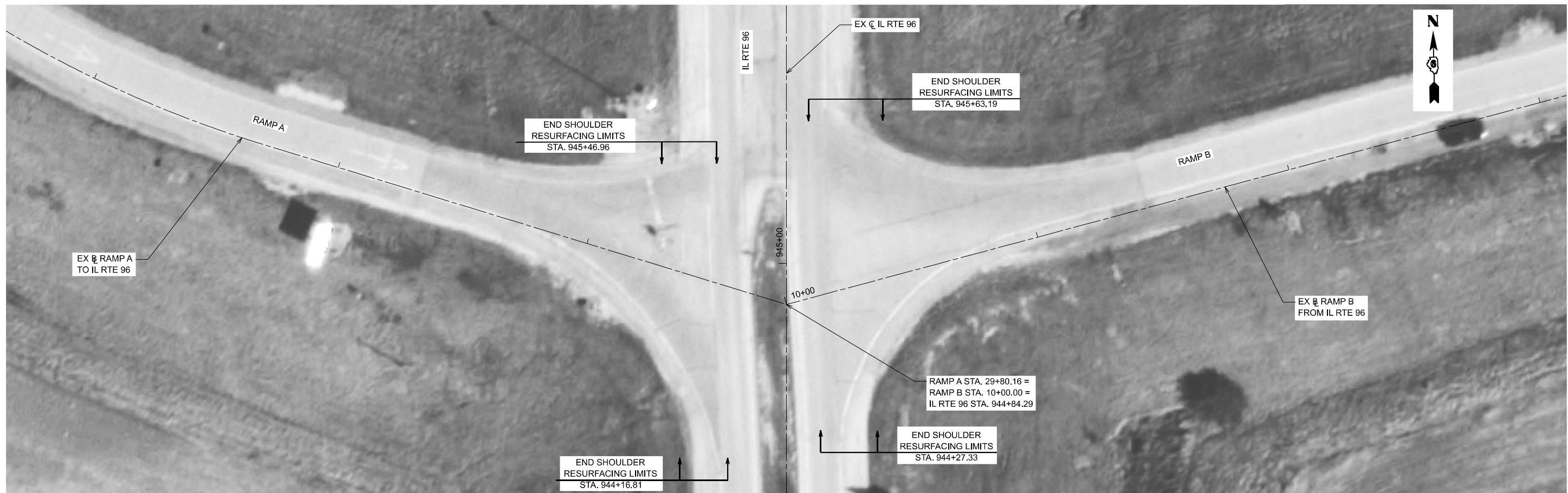
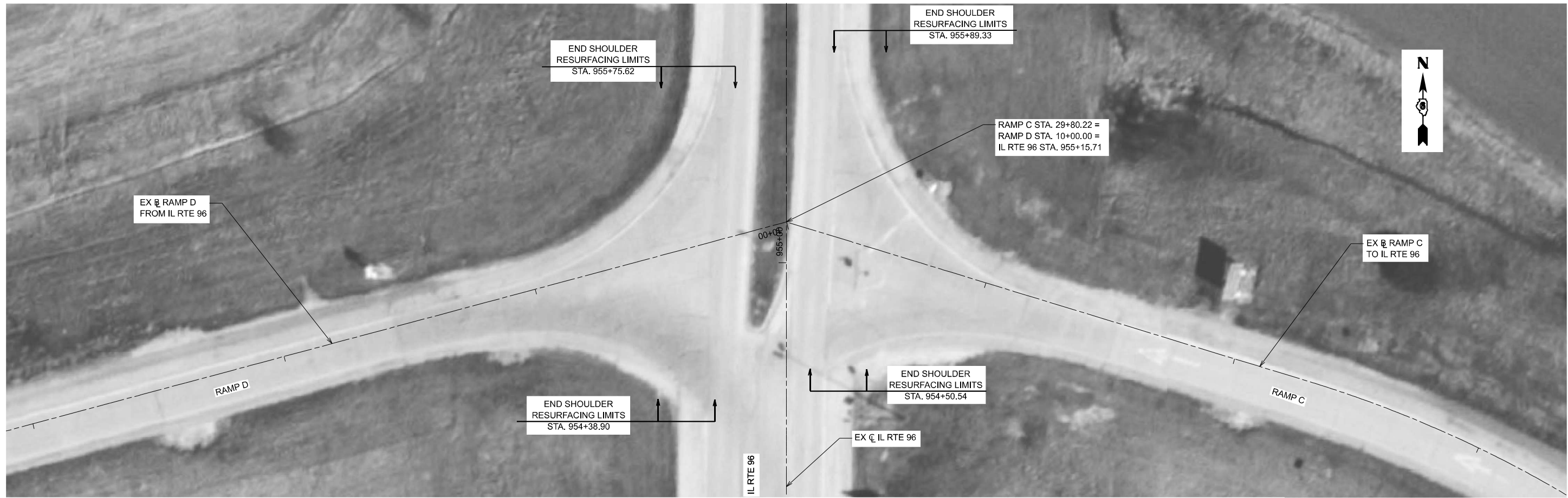
USER NAME = mairiglynn	DESIGNED -	REVISED -
	DRAWN -	REVISED -
	CHECKED -	REVISED -
PLOT DATE = 3/9/2026	DATE -	REVISED -

**STATE OF ILLINOIS
DEPARTMENT OF TRANSPORTATION**

TYPICAL SECTIONS

SCALE: N.T.S. SHEET 2 OF 2 SHEETS STA. TO STA.

F.A.I. RTE.	SECTION	COUNTY	TOTAL SHEETS	SHEET NO.
72, 172	(1-2)SR, (75-1)SR-1	ADAMS, PIKE	28	15
CONTRACT NO. 72639				
ILLINOIS FED. AID PROJECT				



MODEL: Named Boundary Sheet H
FILE NAME: c:\bms\pwe-ssast-07\dauid.bnusch\dms41885\0672639-sh-border.dgn

ATLAS

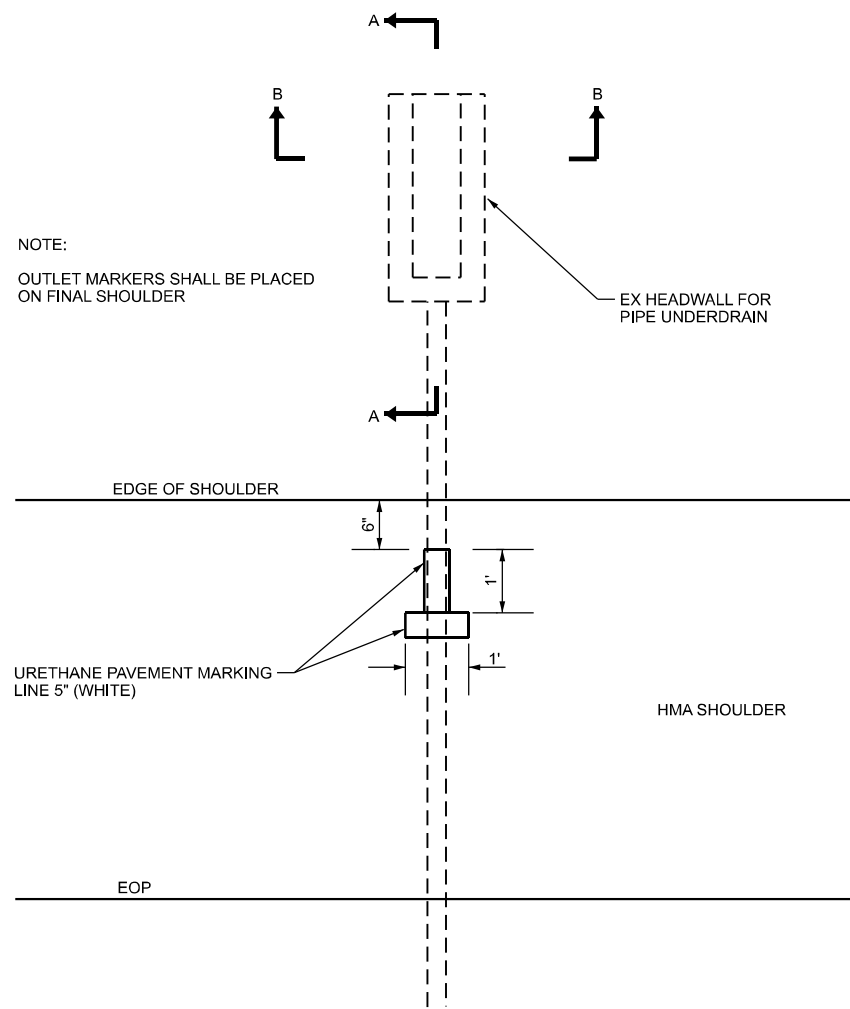
USER NAME =	DESIGNED -	REVISED -
	DRAWN -	REVISED -
	CHECKED -	REVISED -
PLOT DATE =	DATE -	REVISED -

**STATE OF ILLINOIS
DEPARTMENT OF TRANSPORTATION**

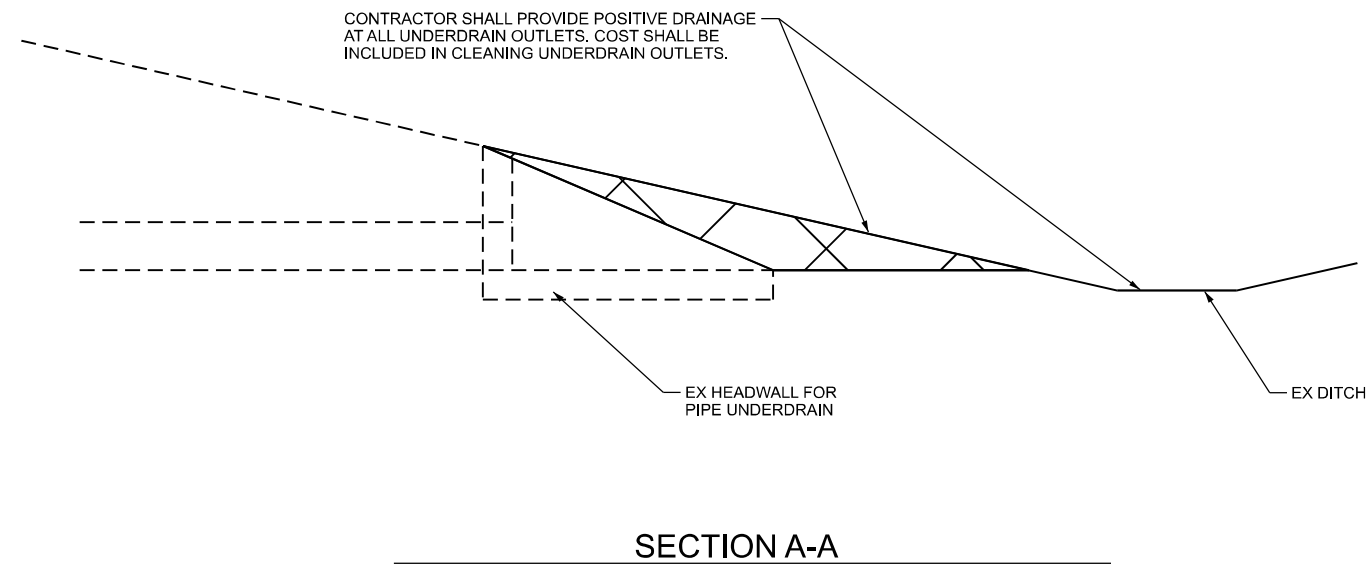
IL 96 RAMP DETAILS

SCALE: 1"=20' SHEET 1 OF 1 SHEETS STA. TO STA.

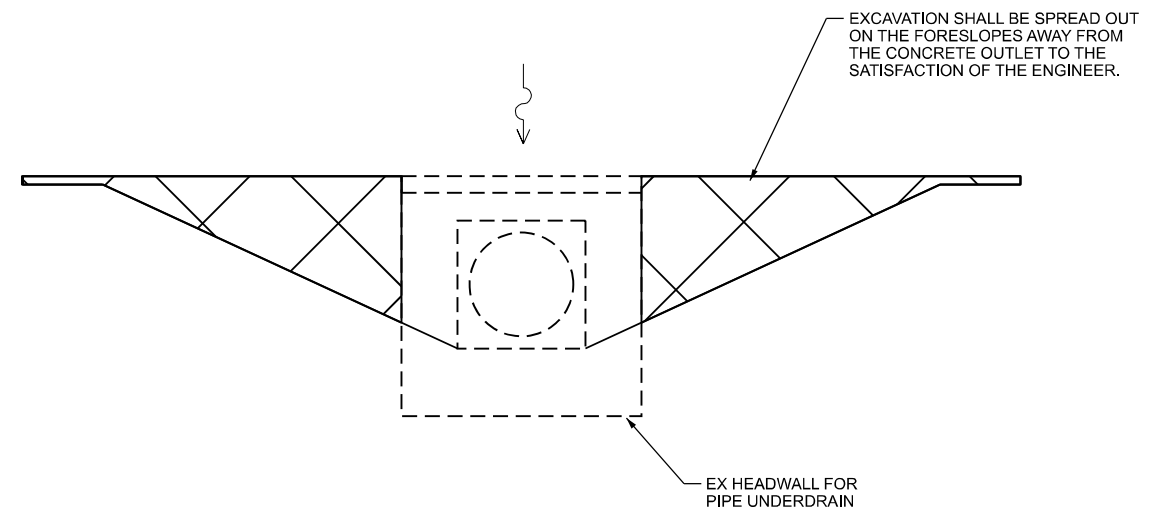
F.A.I. RTE.	SECTION	COUNTY	TOTAL SHEETS	SHEET NO.
72, 172	(1-2)SR, (75-1)SR-1	ADAMS, PIKE	28	16
CONTRACT NO. 72639				
ILLINOIS FED. AID PROJECT				



TYPICAL PIPE UNDERDRAIN MARKER DETAIL



SECTION A-A



SECTION B-B

MODEL: Named Boundary Sheet H
FILE NAME: c:\bns\pipe-ssast-07\main\g\m\dm41886\0672639-shr-pipe underdrain.dgn



USER NAME = mairiglynn	DESIGNED -	REVISED -
	DRAWN -	REVISED -
	CHECKED -	REVISED -
PLOT DATE = 3/9/2026	DATE -	REVISED -

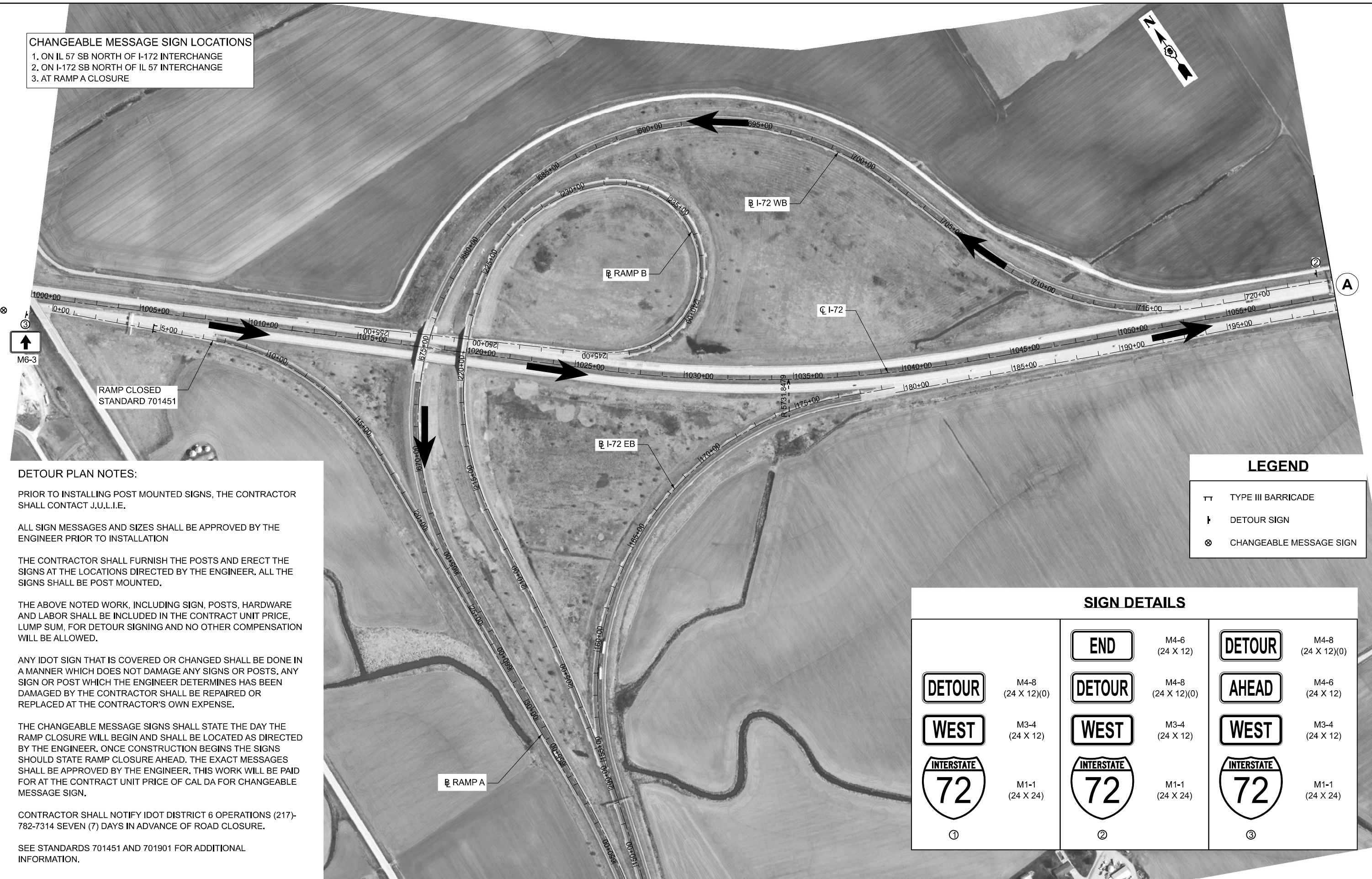
STATE OF ILLINOIS
DEPARTMENT OF TRANSPORTATION

PIPE UNDERDRAIN MARKER DETAIL

SCALE: N.T.S. SHEET 1 OF 1 SHEETS STA. TO STA.

F.A.I. RTE.	SECTION	COUNTY	TOTAL SHEETS	SHEET NO.
72, 172	(1-2)SR, (75-1)SR-1	ADAMS, PIKE	18	28
CONTRACT NO. 72639				
ILLINOIS FED. AID PROJECT				

CHANGEABLE MESSAGE SIGN LOCATIONS
 1. ON IL 57 SB NORTH OF I-172 INTERCHANGE
 2. ON I-172 SB NORTH OF IL 57 INTERCHANGE
 3. AT RAMP A CLOSURE



DETOUR PLAN NOTES:

PRIOR TO INSTALLING POST MOUNTED SIGNS, THE CONTRACTOR SHALL CONTACT J.U.L.I.E.

ALL SIGN MESSAGES AND SIZES SHALL BE APPROVED BY THE ENGINEER PRIOR TO INSTALLATION

THE CONTRACTOR SHALL FURNISH THE POSTS AND ERECT THE SIGNS AT THE LOCATIONS DIRECTED BY THE ENGINEER. ALL THE SIGNS SHALL BE POST MOUNTED.

THE ABOVE NOTED WORK, INCLUDING SIGN, POSTS, HARDWARE AND LABOR SHALL BE INCLUDED IN THE CONTRACT UNIT PRICE, LUMP SUM, FOR DETOUR SIGNING AND NO OTHER COMPENSATION WILL BE ALLOWED.

ANY IDOT SIGN THAT IS COVERED OR CHANGED SHALL BE DONE IN A MANNER WHICH DOES NOT DAMAGE ANY SIGNS OR POSTS. ANY SIGN OR POST WHICH THE ENGINEER DETERMINES HAS BEEN DAMAGED BY THE CONTRACTOR SHALL BE REPAIRED OR REPLACED AT THE CONTRACTOR'S OWN EXPENSE.

THE CHANGEABLE MESSAGE SIGNS SHALL STATE THE DAY THE RAMP CLOSURE WILL BEGIN AND SHALL BE LOCATED AS DIRECTED BY THE ENGINEER. ONCE CONSTRUCTION BEGINS THE SIGNS SHOULD STATE RAMP CLOSURE AHEAD. THE EXACT MESSAGES SHALL BE APPROVED BY THE ENGINEER. THIS WORK WILL BE PAID FOR AT THE CONTRACT UNIT PRICE OF CAL DA FOR CHANGEABLE MESSAGE SIGN.

CONTRACTOR SHALL NOTIFY IDOT DISTRICT 6 OPERATIONS (217)-782-7314 SEVEN (7) DAYS IN ADVANCE OF ROAD CLOSURE.

SEE STANDARDS 701451 AND 701901 FOR ADDITIONAL INFORMATION.

LEGEND

TT	TYPE III BARRICADE
T	DETOUR SIGN
⊗	CHANGEABLE MESSAGE SIGN

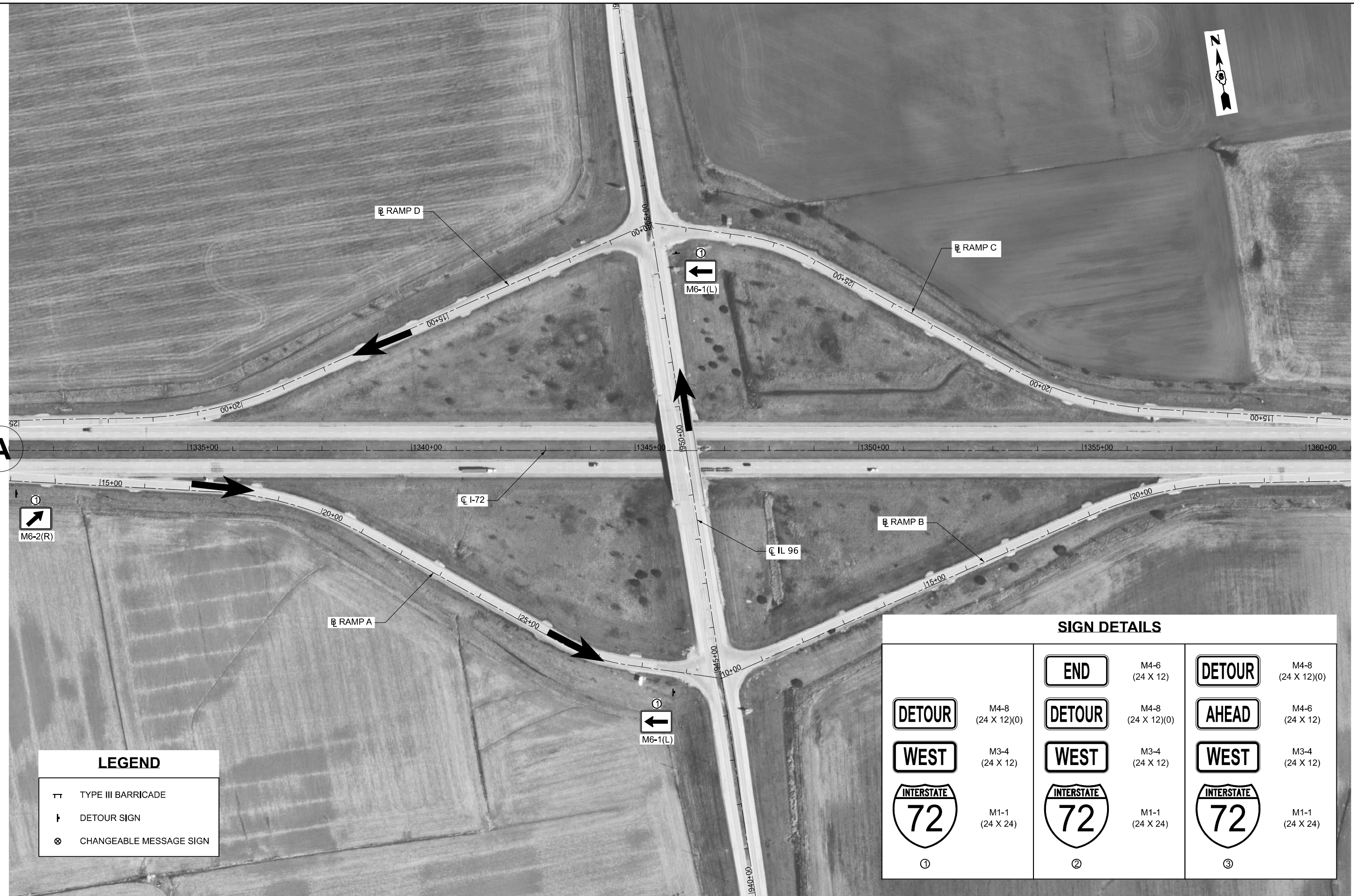
SIGN DETAILS

	M4-8 (24 X 12)(0) M3-4 (24 X 12) M1-1 (24 X 24)		M4-6 (24 X 12) M4-8 (24 X 12)(0) M3-4 (24 X 12) M1-1 (24 X 24)		M4-8 (24 X 12)(0) M4-6 (24 X 12) M3-4 (24 X 12) M1-1 (24 X 24)
①		②		③	

MODEL: Named Boundary, Sheet H
 FILE NAME: c:\bms\pve\asast\07\dauid.bnusch\dms4-1885\0672639-sh-borner.dgn



A



LEGEND	
	TYPE III BARRICADE
	DETOUR SIGN
	CHANGEABLE MESSAGE SIGN

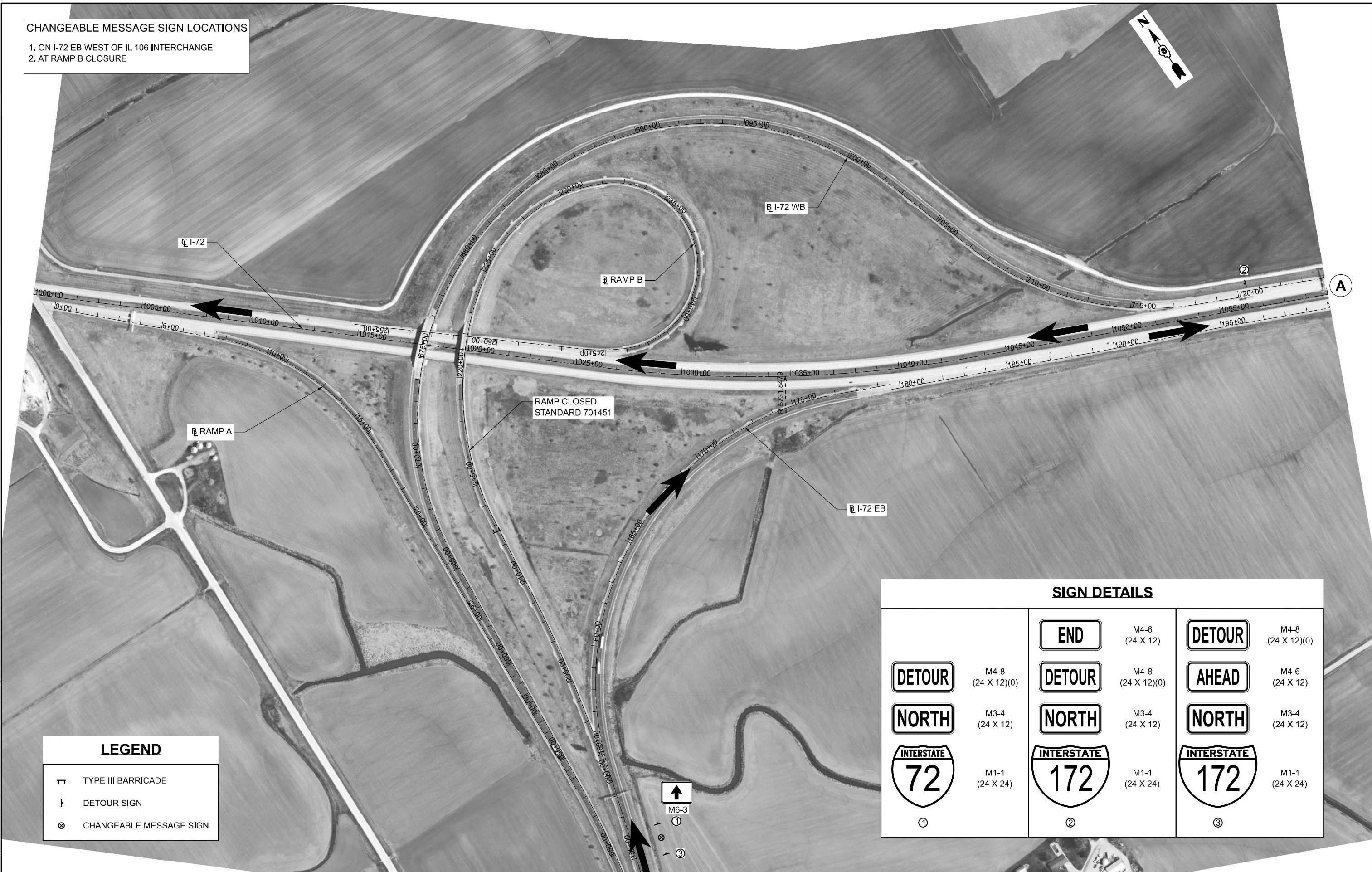
SIGN DETAILS			
	M4-8 (24 X 12)(0)		M4-6 (24 X 12)
	M3-4 (24 X 12)		M4-8 (24 X 12)(0)
	M1-1 (24 X 24)		M3-4 (24 X 12)
①			M1-1 (24 X 24)
			M4-8 (24 X 12)(0)
			M4-6 (24 X 12)
			M3-4 (24 X 12)
			M1-1 (24 X 24)
		③	

MODEL: Named Boundary Sheet H
FILE NAME: c:\bms\pwe-ssasat\07\dauid.bnusch\dms41885\0672639-eh-border.dgn

ATLAS	USER NAME =	DESIGNED -	REVISED -	STATE OF ILLINOIS DEPARTMENT OF TRANSPORTATION	DETOUR PLANS I-72 RAMP A			F.A.I. RTE. 72, 172	SECTION (1-2)SR, (75-1)SR-1	COUNTY ADAMS, PIKE	TOTAL SHEETS 28	SHEET NO. 20
	PLOT DATE =	DATE -	REVISED -		SCALE: N.T.S.	SHEET 2	OF 10 SHEETS	STA. TO STA.	CONTRACT NO. 72639 ILLINOIS FED. AID PROJECT			

CHANGEABLE MESSAGE SIGN LOCATIONS

1. ON I-72 EB WEST OF IL 106 INTERCHANGE
2. AT RAMP B CLOSURE



LEGEND

	TYPE III BARRICADE
	DETOUR SIGN
	CHANGEABLE MESSAGE SIGN

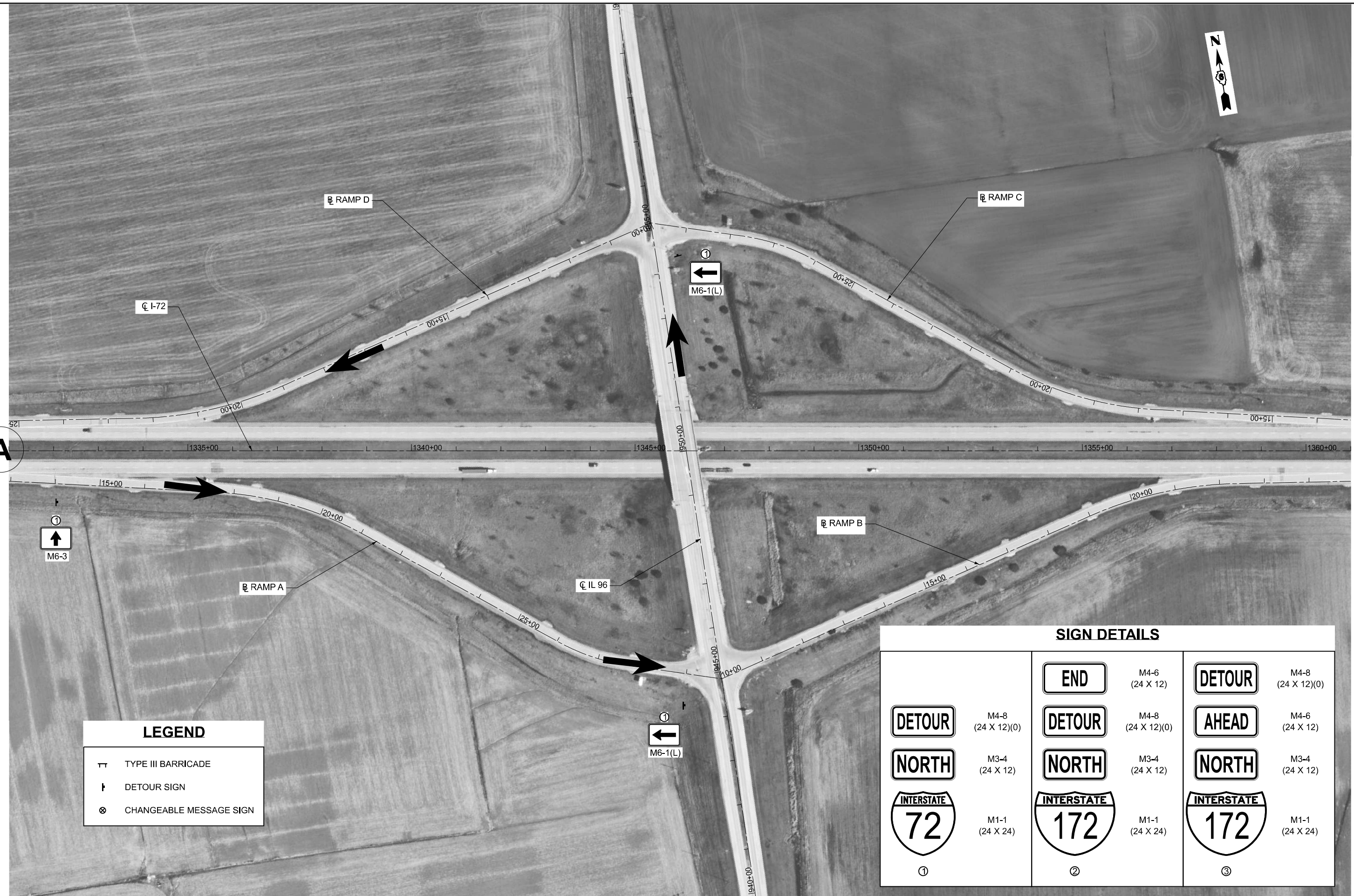
SIGN DETAILS

	M4-8 (24 X 12)(0)		M4-6 (24 X 12)		M4-8 (24 X 12)(0)
	M3-4 (24 X 12)		M4-8 (24 X 12)(0)		M4-6 (24 X 12)
	M1-1 (24 X 24)		M3-4 (24 X 12)		M3-4 (24 X 12)
①			M1-1 (24 X 24)		M1-1 (24 X 24)
		②		③	

MODEL: Named Boundary Sheet H
FILE NAME: c:\bms\pwe-ssast-07\dauid.bnusch\dms41885\0672639-sh-border.dgn



A



LEGEND	
	TYPE III BARRICADE
	DETOUR SIGN
	CHANGEABLE MESSAGE SIGN

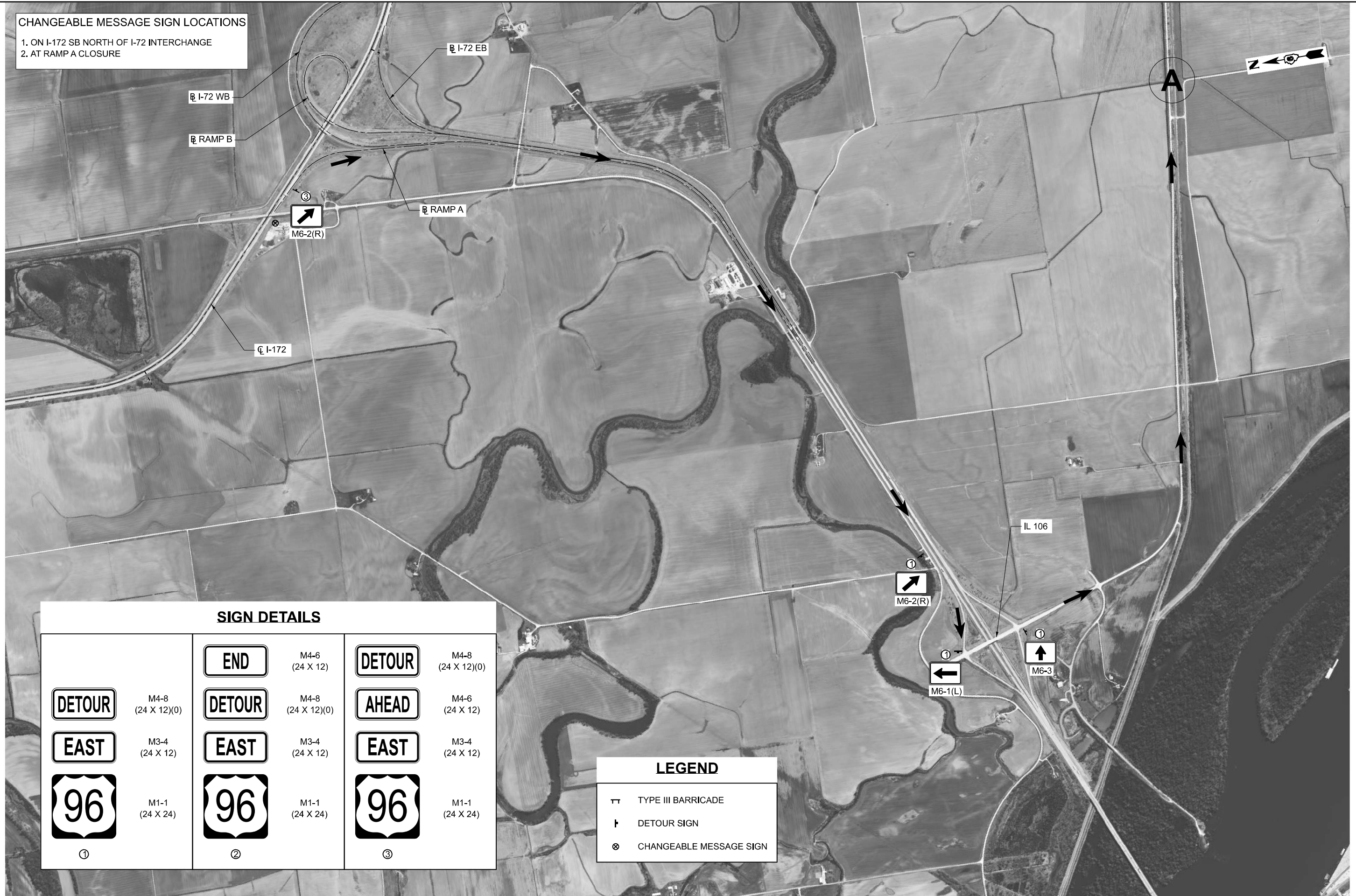
SIGN DETAILS			
	M4-8 (24 X 12)(0)		M4-6 (24 X 12)
	M3-4 (24 X 12)		M4-8 (24 X 12)(0)
	M1-1 (24 X 24)		M4-6 (24 X 12)
①			M3-4 (24 X 12)
		②	M1-1 (24 X 24)
			M1-1 (24 X 24)
		③	

MODEL: Named Boundary Sheet H
 FILE NAME: c:\bms\pwe-aseast\07\dauid.bnusch\dms41885\0672639-sh-border.dgn

	USER NAME =	DESIGNED -	REVISED -	STATE OF ILLINOIS DEPARTMENT OF TRANSPORTATION	DETOUR PLANS I-72 RAMP B		F.A.I. RTE. 72, 172	SECTION (1-2)SR, (75-1)SR-1	COUNTY ADAMS, PIKE	TOTAL SHEETS 28	SHEET NO. 22
	PLOT DATE =	DATE -	REVISED -		SCALE: N.T.S.	SHEET 4 OF 10 SHEETS	STA. TO STA.	ILLINOIS FED. AID PROJECT CONTRACT NO. 72639			

CHANGEABLE MESSAGE SIGN LOCATIONS

1. ON I-172 SB NORTH OF I-72 INTERCHANGE
2. AT RAMP A CLOSURE



SIGN DETAILS

	M4-8 (24 X 12)(0)		M4-6 (24 X 12)		M4-8 (24 X 12)(0)
	M3-4 (24 X 12)		M4-8 (24 X 12)(0)		M4-6 (24 X 12)
	M1-1 (24 X 24)		M3-4 (24 X 12)		M3-4 (24 X 12)
①			M1-1 (24 X 24)		M1-1 (24 X 24)
		②			③

LEGEND

- TYPE III BARRICADE
- DETOUR SIGN
- CHANGEABLE MESSAGE SIGN

MODEL: Named Boundary Sheet H
FILE NAME: c:\bms\pwe-ssast-07\dauid.bnusch\dms41885\0672639-sh-border.dgn



USER NAME =	DESIGNED -	REVISED -
	DRAWN -	REVISED -
	CHECKED -	REVISED -
PLOT DATE =	DATE -	REVISED -












**STATE OF ILLINOIS
DEPARTMENT OF TRANSPORTATION**

**DETOUR PLANS
IL 96 RAMP A**

SCALE: N.T.S. SHEET 5 OF 10 SHEETS STA. TO STA.

F.A.I. RTE.	SECTION	COUNTY	TOTAL SHEETS	SHEET NO.
72, 172	(1-2)SR, (75-1)SR-1	ADAMS, PIKE	28	23
CONTRACT NO. 72639			ILLINOIS FED. AID PROJECT	

SIGN DETAILS

	M4-8 (24 X 12)(0)		M4-6 (24 X 12)		M4-8 (24 X 12)(0)
	M3-4 (24 X 12)		M4-8 (24 X 12)(0)		M4-6 (24 X 12)
	M1-1 (24 X 24)		M3-4 (24 X 12)		M3-4 (24 X 12)
①			M1-1 (24 X 24)		M1-1 (24 X 24)
		②		③	



A




B

IL 106

CL-72

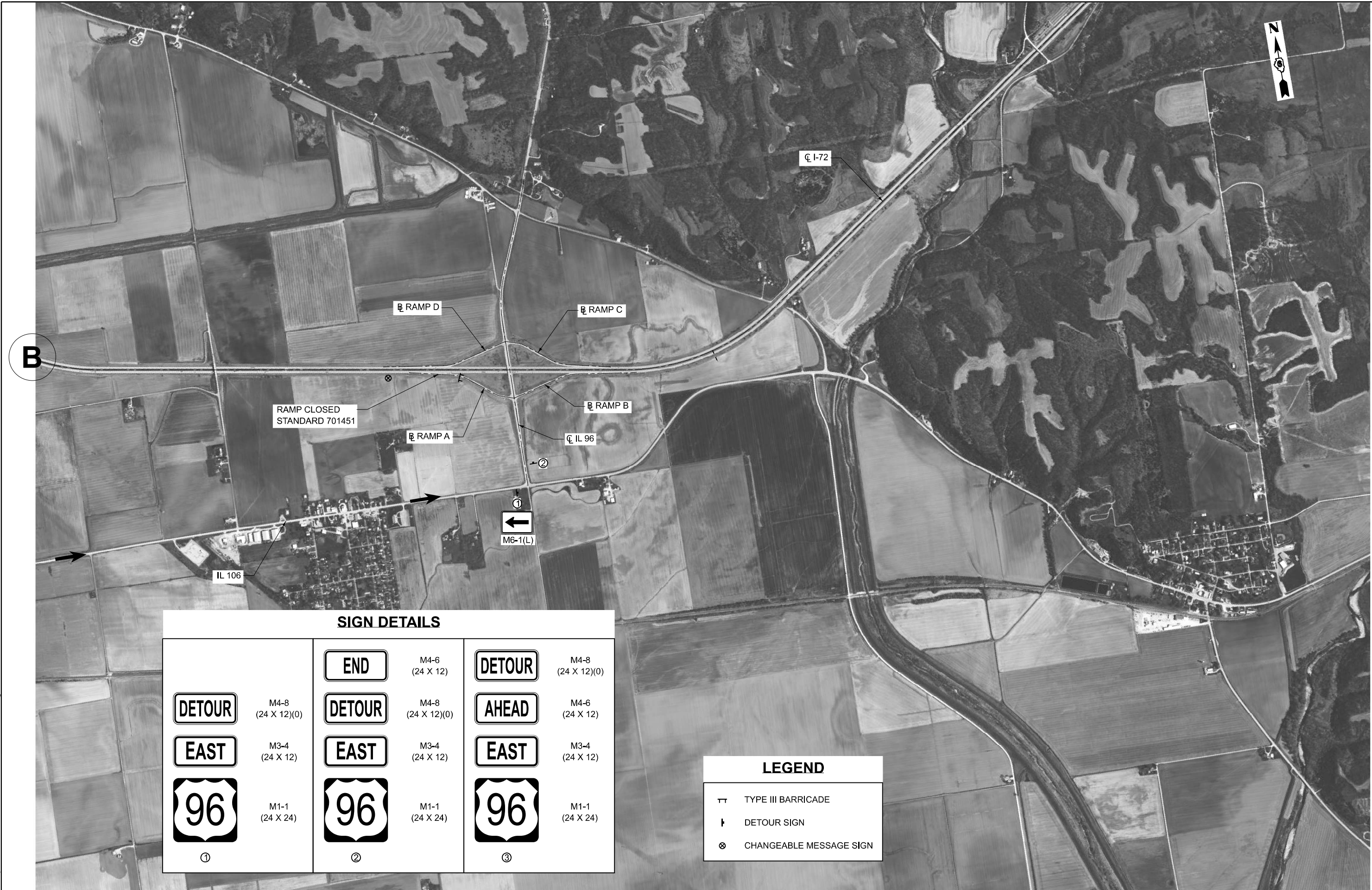


LEGEND

-  TYPE III BARRICADE
-  DETOUR SIGN
-  CHANGEABLE MESSAGE SIGN

MODEL: Named Boundary Sheet H
FILE NAME: c:\bms\pwe-ssast-07\dauid.bnusch\dms41885\0672639-eh-border.dgn

ATLAS	USER NAME =	DESIGNED -	REVISED -	STATE OF ILLINOIS DEPARTMENT OF TRANSPORTATION	DETOUR PLANS IL 96 RAMP A		F.A.I. RTE.	SECTION	COUNTY	TOTAL SHEETS	SHEET NO.
	PLOT DATE =	DRAWN -	REVISED -				72, 172	(1-2)SR, (75-1)SR-1	ADAMS, PIKE	28	24
		CHECKED -	REVISED -		SCALE: N.T.S.	SHEET 6	OF 10 SHEETS	STA.	TO STA.	CONTRACT NO. 72639	
		DATE -	REVISED -		ILLINOIS FED. AID PROJECT						



SIGN DETAILS

	M4-8 (24 X 12)(0)		M4-6 (24 X 12)		M4-8 (24 X 12)(0)
	M3-4 (24 X 12)		M4-8 (24 X 12)(0)		M4-6 (24 X 12)
	M1-1 (24 X 24)		M3-4 (24 X 12)		M3-4 (24 X 12)
			M1-1 (24 X 24)		M1-1 (24 X 24)

LEGEND

	TYPE III BARRICADE
	DETOUR SIGN
	CHANGEABLE MESSAGE SIGN

MODEL: Named Boundary Sheet H
FILE NAME: c:\bms\pwe-ss-east-07\dwg\dms41885\0672639-sh-border.dgn



USER NAME =	DESIGNED -	REVISED -
	DRAWN -	REVISED -
	CHECKED -	REVISED -
PLOT DATE =	DATE -	REVISED -

**STATE OF ILLINOIS
DEPARTMENT OF TRANSPORTATION**

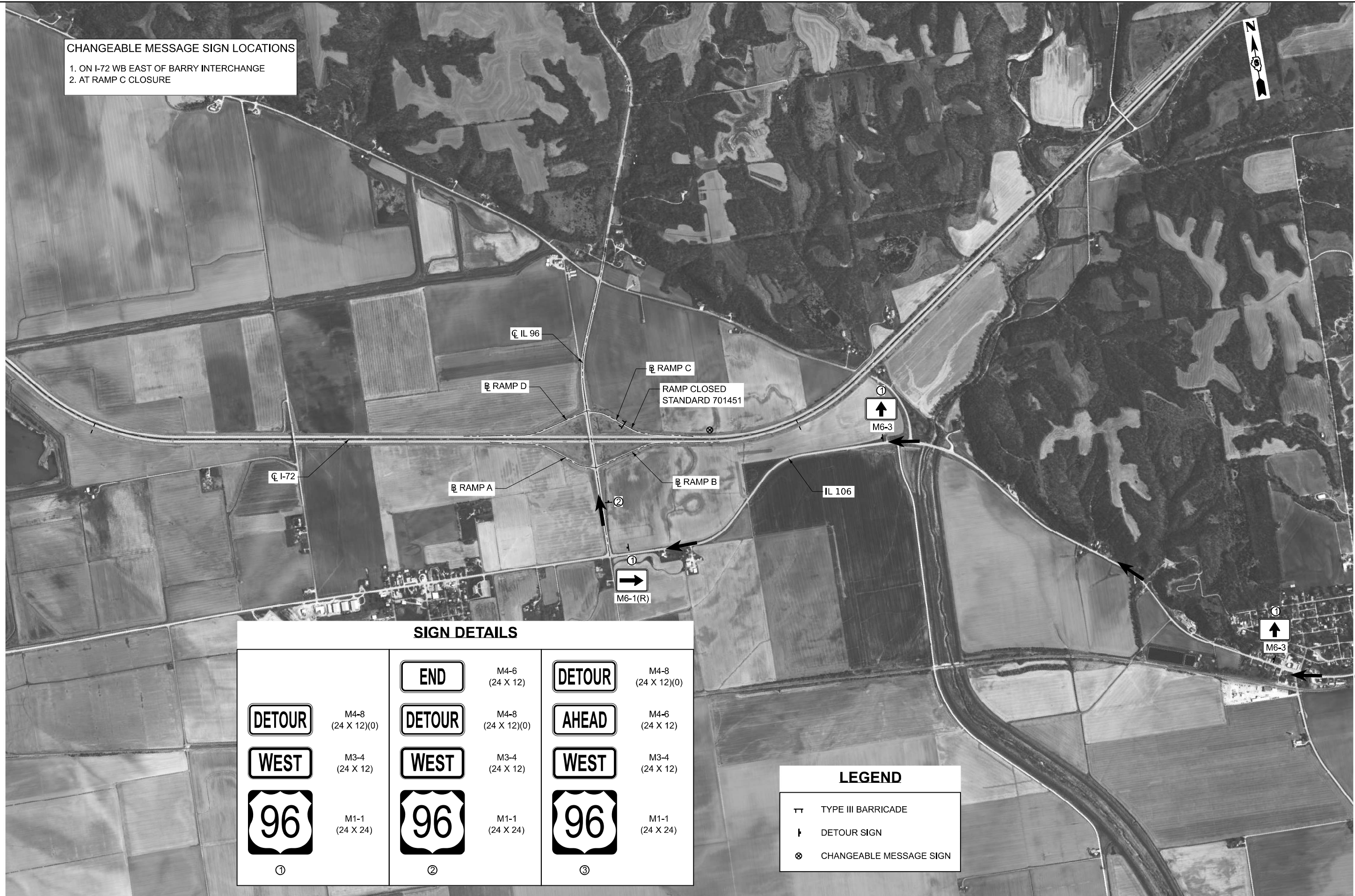
**DETOUR PLANS
IL 96 RAMP A**

SCALE: N.T.S. SHEET 7 OF 10 SHEETS STA. TO STA.

F.A.I. RTE.	SECTION	COUNTY	TOTAL SHEETS	SHEET NO.
72, 172	(1-2)SR, (75-1)SR-1	ADAMS, PIKE	28	25
CONTRACT NO. 72639				
ILLINOIS FED. AID PROJECT				

CHANGEABLE MESSAGE SIGN LOCATIONS

1. ON I-72 WB EAST OF BARRY INTERCHANGE
2. AT RAMP C CLOSURE



SIGN DETAILS

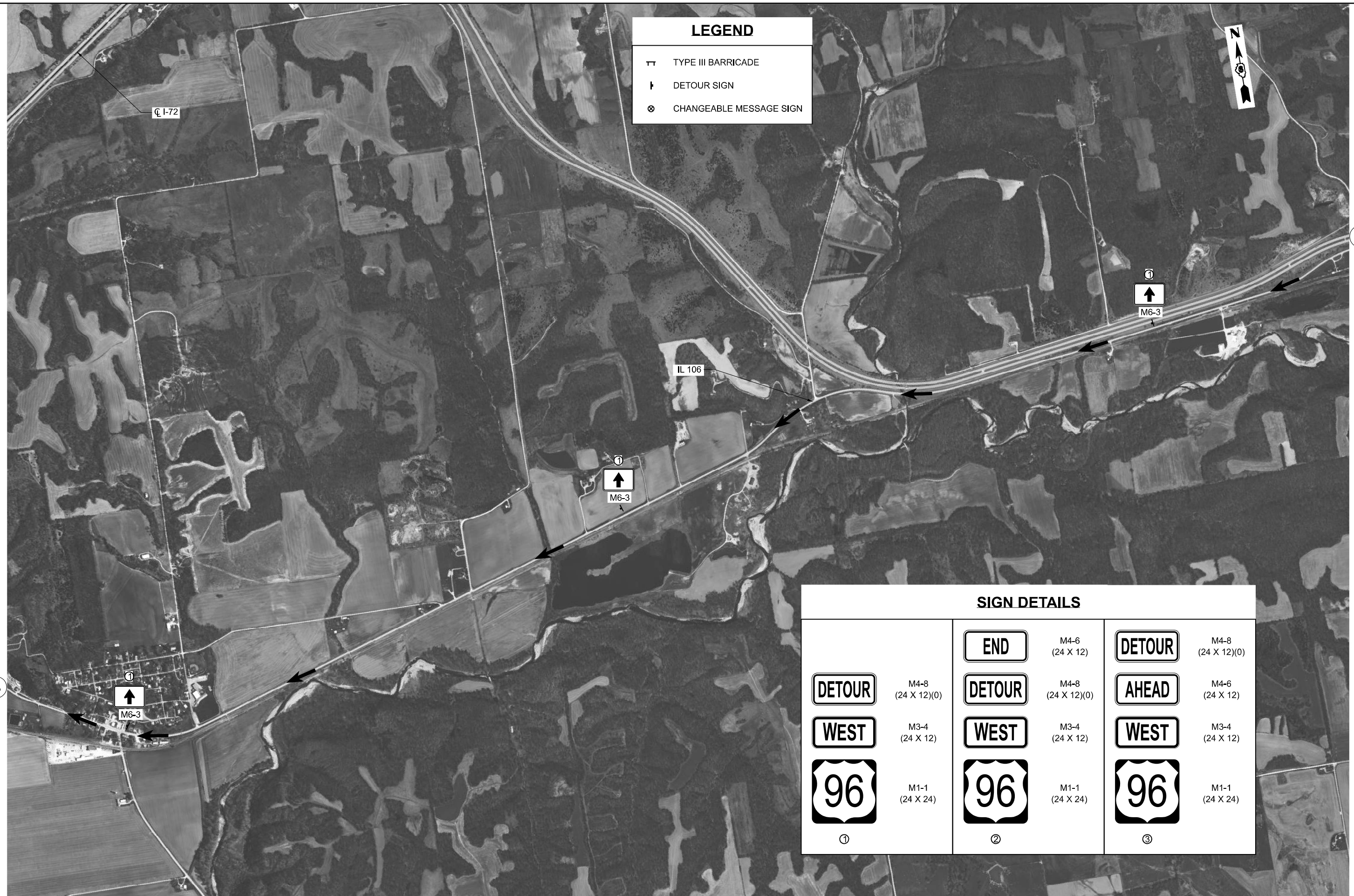
	M4-8 (24 X 12)(0)		M4-6 (24 X 12)		M4-8 (24 X 12)(0)
	M3-4 (24 X 12)		M4-8 (24 X 12)(0)		M4-6 (24 X 12)
	M1-1 (24 X 24)		M3-4 (24 X 12)		M3-4 (24 X 12)
①			M1-1 (24 X 24)		M1-1 (24 X 24)
		②		③	

LEGEND

	TYPE III BARRICADE
	DETOUR SIGN
	CHANGEABLE MESSAGE SIGN

MODEL: Named Boundary, Sheet H
FILE NAME: c:\bms\pwe-ssast-07\dauid.bnusch\dms41885\0672639-sh-border.dgn

LEGEND	
	TYPE III BARRICADE
	DETOUR SIGN
	CHANGEABLE MESSAGE SIGN



SIGN DETAILS			
	M4-8 (24 X 12)(0)		M4-6 (24 X 12)
	M3-4 (24 X 12)		M4-8 (24 X 12)(0)
	M1-1 (24 X 24)		M3-4 (24 X 12)
①			M1-1 (24 X 24)
			M4-6 (24 X 12)
			M3-4 (24 X 12)
			M1-1 (24 X 24)
		③	

MODEL: Named Boundary, Sheet H
 FILE NAME: c:\bms\pwe-ss-east-07\dauid.bnusch\dms41885\0672639-eh-border.dgn

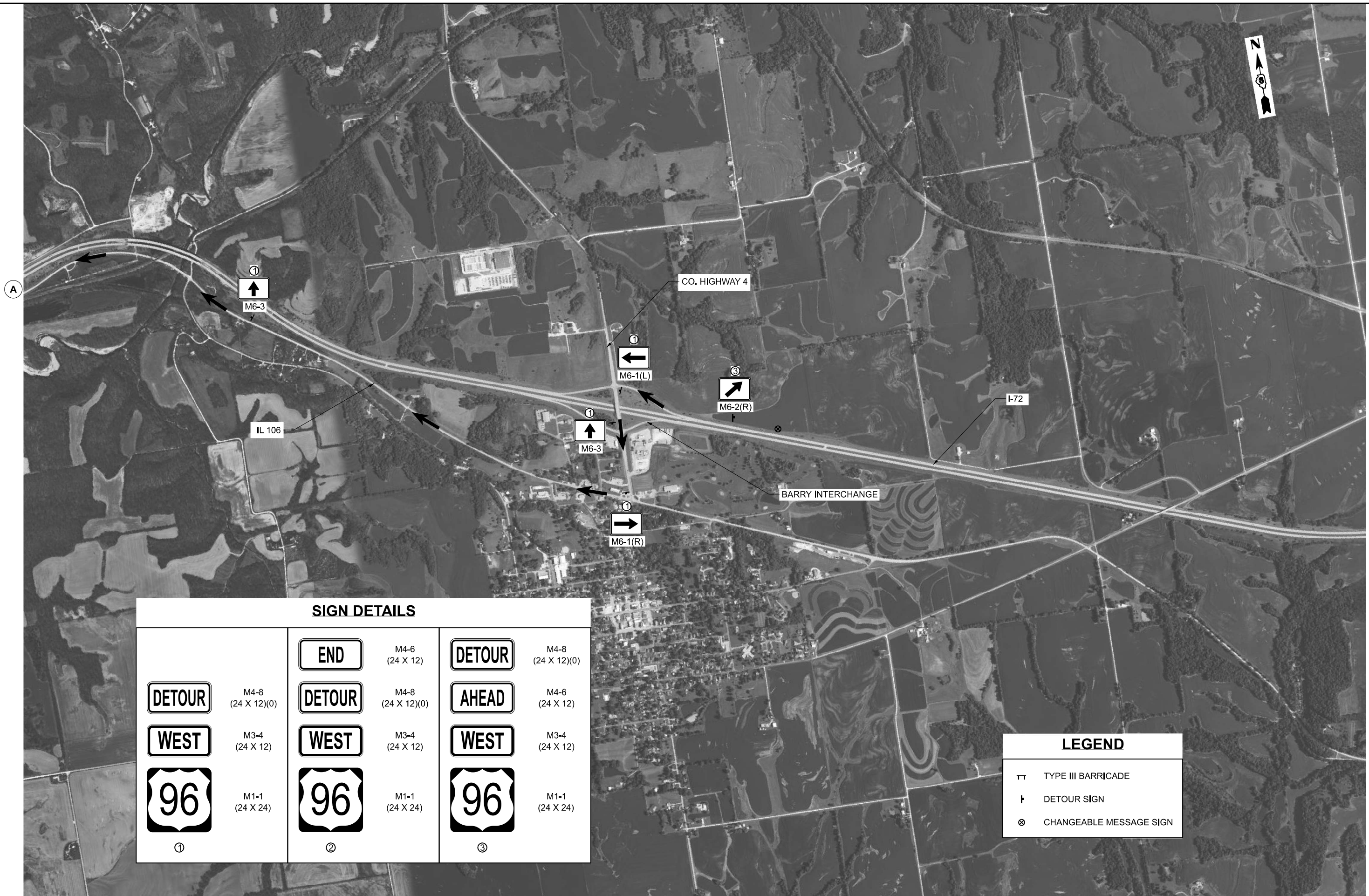
ATLAS	USER NAME =	DESIGNED -	REVISED -
		DRAWN -	REVISED -
		CHECKED -	REVISED -
	PLOT DATE =	DATE -	REVISED -

STATE OF ILLINOIS
DEPARTMENT OF TRANSPORTATION

DETOUR PLANS
IL 96 RAMP B

SCALE: N.T.S. SHEET 9 OF 10 SHEETS STA. TO STA.

F.A.I. RTE.	SECTION	COUNTY	TOTAL SHEETS	SHEET NO.
72, 172	(1-2)SR, (75-1)SR-1	ADAMS, PIKE	28	27
CONTRACT NO. 72639				
ILLINOIS FED. AID PROJECT				



SIGN DETAILS

	M4-8 (24 X 12)(0)		M4-6 (24 X 12)		M4-8 (24 X 12)(0)
	M3-4 (24 X 12)		M4-8 (24 X 12)(0)		M4-6 (24 X 12)
	M3-4 (24 X 12)		M4-8 (24 X 12)(0)		M3-4 (24 X 12)
	M1-1 (24 X 24)		M3-4 (24 X 12)		M3-4 (24 X 12)
	M1-1 (24 X 24)		M1-1 (24 X 24)		M1-1 (24 X 24)
①		②		③	

LEGEND

	TYPE III BARRICADE
	DETOUR SIGN
	CHANGEABLE MESSAGE SIGN

MODEL: Named Boundary Sheet H
FILE NAME: c:\bms\pwe-ssast-07\dauid.bnustch\dms41885\0672639-sh-border.dgn