

STATE OF ILLINOIS
DEPARTMENT OF TRANSPORTATION

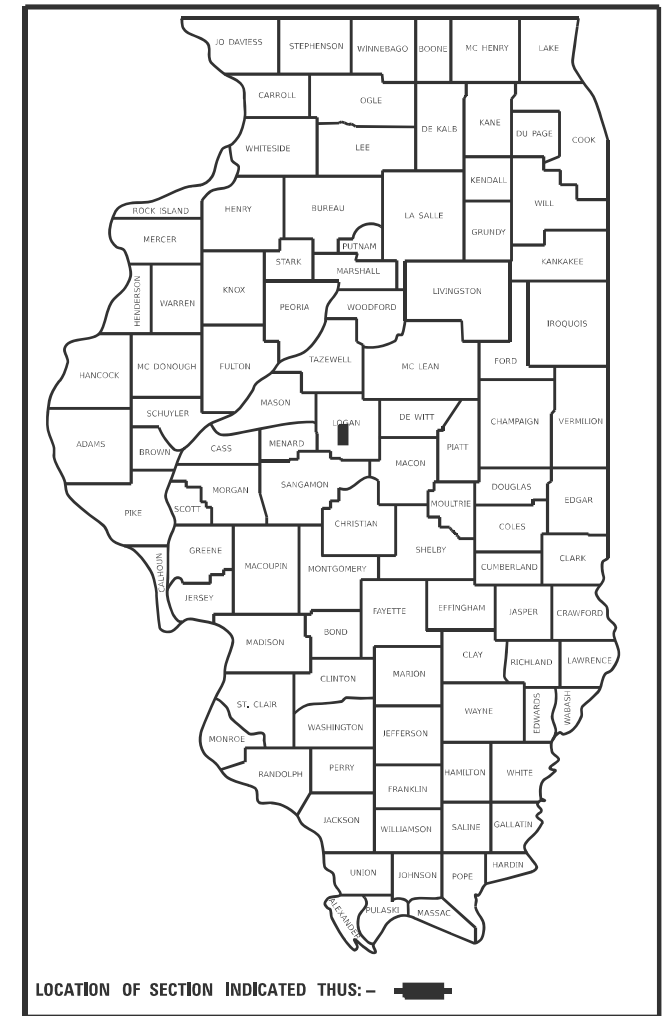
| F.A.I. RTE. | SECTION | COUNTY | TOTAL SHEETS | SHEET NO. |
|-------------|-----------|----------|--------------------|-----------|
| 55 | (54-3)I-4 | LOGAN | 7 | 1 |
| | | ILLINOIS | CONTRACT NO. 72E71 | |

FOR INDEX OF SHEETS, SEE SHEET NO. 2

PROPOSED HIGHWAY PLANS

FAI ROUTE 55 (I 55)
SECTION (54-3)I-4
PROJECT
MISCELLANEOUS
LOGAN COUNTY

D-96-024-26

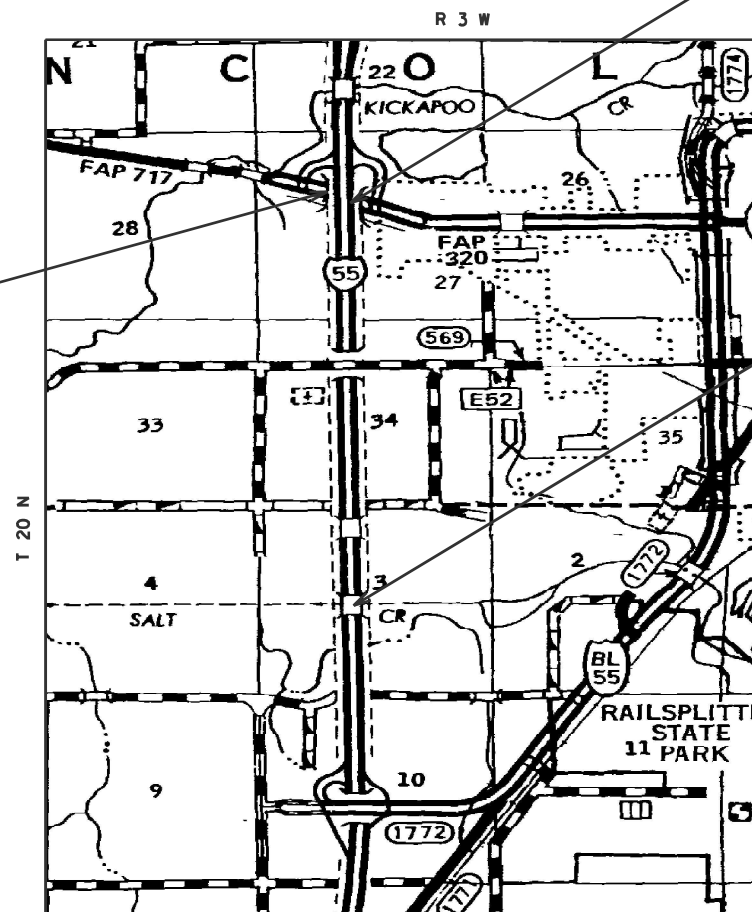


C-96-056-26

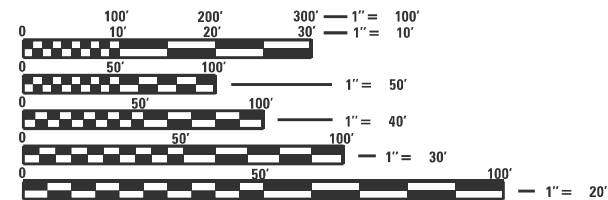
PROJECT LOCATION 3 & 4

PROJECT LOCATION #5

PROJECT LOCATION #1 & 2



ADT = 17,800 (2025)
SU = 600 (2025)
MU = 4,400 (2025)



FULL SIZE PLANS HAVE BEEN PREPARED USING STANDARD ENGINEERING SCALES. REDUCED SIZED PLANS WILL NOT CONFORM TO STANDARD SCALES. IN MAKING MEASUREMENTS ON REDUCED PLANS, THE ABOVE SCALES MAY BE USED.

J.U.L.I.E.
JOINT UTILITY LOCATION INFORMATION FOR EXCAVATORS
1-800-892-0123
OR 811

PROJECT ENGINEER: MIKE HAMBY (217)524-7765
PROJECT MANAGER TIM SHARP (217)524-9160

CONTRACT NO. 72E71

STATE OF ILLINOIS
DEPARTMENT OF TRANSPORTATION

SUBMITTED March 25, 2026
Teresa C. Price
REGIONAL ENGINEER

May 8, 2026
[Signature]
ENGINEER OF DESIGN AND ENVIRONMENT

May 8, 2026
[Signature]
DIRECTOR OF HIGHWAYS PROJECT IMPLEMENTATION

PRINTED BY THE AUTHORITY
OF THE STATE OF ILLINOIS

INDEX OF SHEETS

| SHEET NO. | DESCRIPTION |
|-----------|--|
| 1. | COVER SHEET |
| 2. | INDEX OF SHEETS, STANDARDS, GENERAL NOTES & SIGNATURES |
| 3. | SUMMARY OF QUANTITIES |
| 4. | SCHEDULES |
| 5. | LOCATION MAP |
| 6-7. | DETAILS |

STANDARDS

| STANDARD NO. | DESCRIPTION |
|--------------|---|
| 442001-04 | CLASS A PATCHES |
| 701101-05 | OFF-RD OPERATIONS, MULTILANE, 15' TO 24' FROM PAVEMENT EDGE |
| 701106-02 | OFF-RD OPERATIONS, MULTILANE, MORE THAN 15' AWAY |
| 701400-12 | APPROACH TO LANE CLOSURE, FREEWAY/EXPRESSWAY |
| 701401-13 | LANE CLOSURE, FREEWAY/EXPRESSWAY |
| 701411-09 | LANE CLOSURE, MULTILANE AT ENTRANCE TO EXIT RAMP FOR SPEEDS → 45 M.P.H. |
| 701446-11 | TWO LANE CLOSURE, FREEWAY/EXPRESSWAY |
| 701901-11 | TRAFFIC CONTROL DEVICES |

| STATE OF ILLINOIS DEPARTMENT OF TRANSPORTATION DIVISION OF HIGHWAYS DISTRICT 6 | |
|---|---|
| EXAMINED | March 27, 2026 <i>J.A. Schwan</i> ENGINEER OF OPERATIONS |
| EXAMINED | March 27, 2026 <i>R.P. Hamby</i> ENGINEER OF PROJECT IMPLEMENTATION |
| EXAMINED | March 27, 2026 <i>MU</i> ENGINEER OF PROGRAM DEVELOPMENT |

Only the District 6 engineer assigned to the project, the RE or RT, will move the signals to manual flash condition and return the signals to "normal" operation. This shall not be delegated. In doing so, the RE or RT will have full responsibility for function of those signals and any issue that may arise from his/her actions.

The RE or RT shall notify by email:

brian.fry@illinois.gov, dale.hebenstreit@illinois.gov, or michael.hamby@illinois.gov at least the day prior to the planned traffic signal flash condition.

The contractor shall not have access to the signal cabinet.

If you have any questions or require additional information, please call Michael Hamby at 217-556-4643.

REV - MS

MODEL: D:\draft\...
FILE NAME: ...

| | | |
|---------------------------|------------|-----------|
| USER NAME = Timothy.Sharp | DESIGNED - | REVISED - |
| | DRAWN - | REVISED - |
| PLOT SCALE = \$SCALE\$ | CHECKED - | REVISED - |
| PLOT DATE = 3/19/2026 | DATE - | REVISED - |

STATE OF ILLINOIS
DEPARTMENT OF TRANSPORTATION

INDEX OF SHEETS, HIGHWAY STANDARDS,
GENERAL NOTES, & SIGNATURES

SCALE: SHEET OF SHEETS STA. TO STA.

| F.A.I. RTE. | SECTION | COUNTY | TOTAL SHEETS | SHEET NO. |
|---------------------------|-----------|--------|--------------|--------------------|
| 55 | (54-3)I-4 | LOGAN | 7 | 2 |
| | | | | CONTRACT NO. 72E71 |
| ILLINOIS FED. AID PROJECT | | | | |

0-02180-6026
 CONSTR. CODE
 100% STATE
 LOGAN

| CODE NO. | ITEM | UNIT | TOTAL QUANTITY | 0047 RURAL |
|----------|---|--------|----------------|------------|
| 44201299 | DOWEL BARS 1 1/2" | EACH | 12 | 12 |
| 44213200 | SAW CUTS | FOOT | 46 | 46 |
| 50800205 | REINFORCEMENT BARS, EPOXY COATED | POUND | 578 | 578 |
| 67100100 | MOBILIZATION | L SUM | 1 | 1 |
| 70100420 | TRAFFIC CONTROL AND PROTECTION, STANDARD 701411 | EACH | 2 | 2 |
| 70100800 | TRAFFIC CONTROL AND PROTECTION, STANDARD 701401 | L SUM | 1 | 1 |
| 70100815 | TRAFFIC CONTROL AND PROTECTION, STANDARD 701446 | L SUM | 1 | 1 |
| 70107025 | CHANGEABLE MESSAGE SIGN | CAL DA | 60 | 60 |
| X4420201 | PAVEMENT PATCHING (SPECIAL) | SQ YD | 7 | 7 |
| X5012502 | CONCRETE REMOVAL (SPECIAL) | CU YD | 5 | 5 |
| Z0041895 | POLYMER CONCRETE | CU FT | 130 | 130 |
| Z0032470 | JOINT SEALER | FOOT | 223 | 223 |

REV - MS

| | | | | | | | | | | | | | |
|---|---------------------------|------------|-----------|---|-------------------------------------|--|--|--|--------------------|----------|--------|--------------|-----------|
| FILE NAME : | USER NAME : Timothy.Sharp | DESIGNED - | REVISED - | STATE OF ILLINOIS DEPARTMENT OF TRANSPORTATION | SUMMARY OF QUANTITIES | | | | F.A. RTE. | SECTION | COUNTY | TOTAL SHEETS | SHEET NO. |
| p:\dot-p\p\entley.com\VIDOT\Documents\IDOT Offices\District 6\DRD Projects\72E71\DRD\CD\basas\MS71-ah-3-500.dgn | | CHECKED - | REVISED - | | | | | | 55 | (54-3)-4 | LOGAN | 7 | 3 |
| Default | PLOT SCALE = #SCALE# | DATE - | REVISED - | | SCALE: SHEET OF SHEETS STA. TO STA. | | | | CONTRACT NO. 72E71 | | | | |
| | PLOT DATE = 3/30/2026 | | | | ILLINOIS FED. AID PROJECT | | | | | | | | |

| POLYMER CONCRETE NOSING | | |
|-------------------------|--------------|-------------|
| LOCATION | MILE MARKER | LENGTH |
| N.B. | 123.6 | 36' |
| N.B. | 123.7 | 36' |
| N.B. | 125.7 | 36' |
| N.B. | 125.8 | 48' |
| S.B. | 125.9 | 54' |
| | TOTAL | 210' |

| PAVEMENT PATCHING (SPECIAL) | | |
|-----------------------------|--------------|------------|
| LOCATION | MILE MARKER | LENGTH |
| N.B.D.L. | 125.80 | 12' |
| | TOTAL | 12' |

MODEL: D:\draft
 FILE NAME: p:\illinois\work\bechtel\com\p\midot\Documents\DOT 0_csa\District 6\608D_Project\72E71\CADData\CADsheets\72E71_sch4-schedules.dgn

| | | | | | | | | | | |
|---------------------------|------------|-----------|---|-------------------------------------|--|--------------------|-----------|--------|--------------|-----------|
| USER NAME = Timothy.Sharp | DESIGNED - | REVISED - | STATE OF ILLINOIS DEPARTMENT OF TRANSPORTATION | SCHEDULES | | F.A.I. RTE. | SECTION | COUNTY | TOTAL SHEETS | SHEET NO. |
| PLOT SCALE = \$SCALE\$ | DRAWN - | REVISED - | | | | 55 | (54-3)I-4 | LOGAN | 7 | 4 |
| PLOT DATE = 3/30/2026 | CHECKED - | REVISED - | | SCALE: SHEET OF SHEETS STA. TO STA. | | CONTRACT NO. 72E71 | | | | |
| | DATE - | REVISED - | | ILLINOIS FED. AID PROJECT | | | | | | |



MODEL: Default
 FILE NAME: p:\ilts-caw-bentley.com\PROJECTS\DOT\0_csr\District_6\ORD_Projects\72E71\CADData\CADsheets\72E71_sht5_location_map.dgn

| | | |
|---------------------------|------------|-----------|
| USER NAME = Timothy,Sharp | DESIGNED - | REVISED - |
| | DRAWN - | REVISED - |
| PLOT SCALE = 55CALES | CHECKED - | REVISED - |
| PLOT DATE = 2/24/2026 | DATE - | REVISED - |

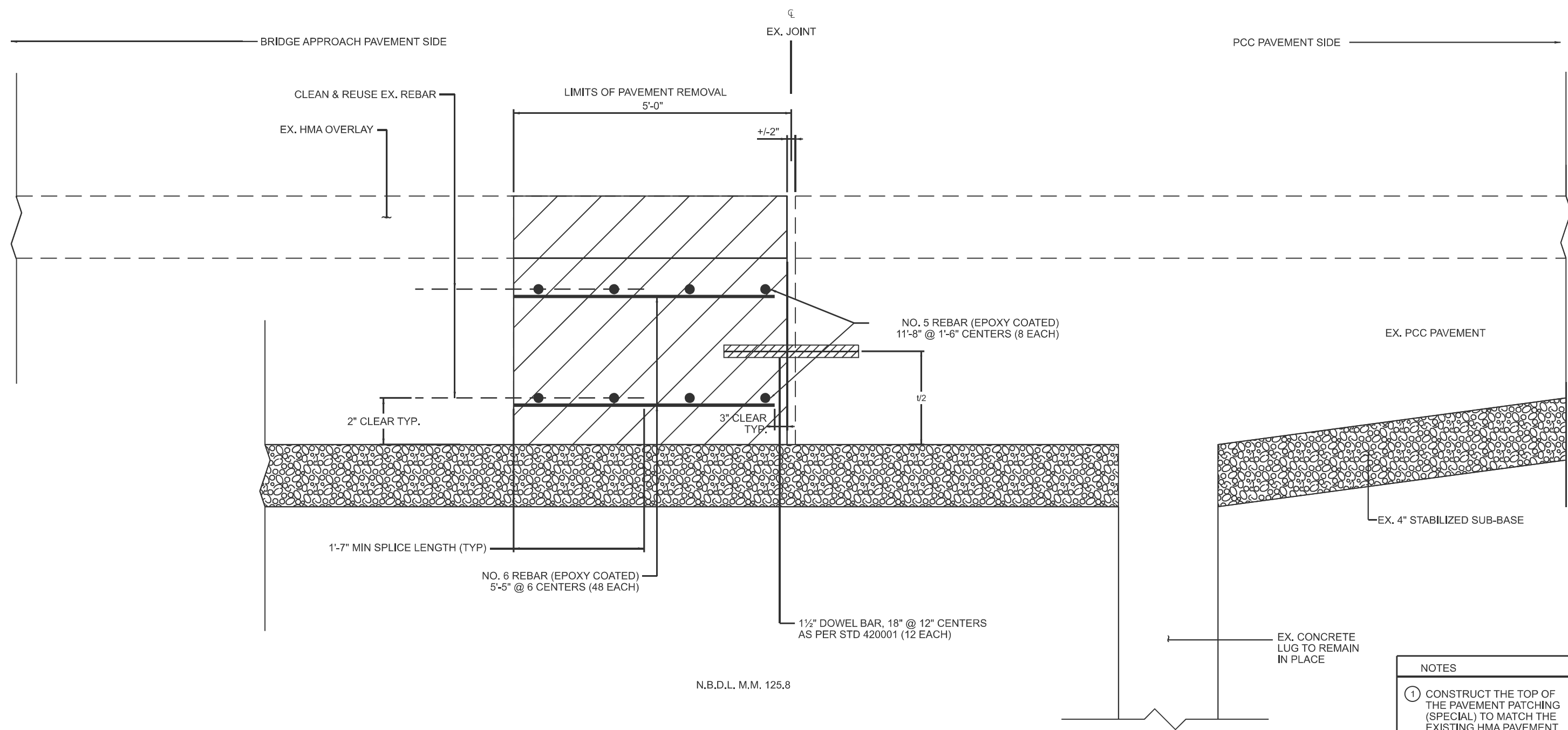
STATE OF ILLINOIS
DEPARTMENT OF TRANSPORTATION

LOCATION MAP

SCALE: SHEET OF SHEETS STA. TO STA.

| F.A.I. RTE. | SECTION | COUNTY | TOTAL SHEETS | SHEET NO. |
|--------------------|-----------|----------|------------------|-----------|
| 55 | (54-3)I-4 | LOGAN | 7 | 5 |
| CONTRACT NO. 72E71 | | | | |
| | | ILLINOIS | FED. AID PROJECT | |

PAVEMENT PATCHING(SPECIAL)



N.B.D.L. M.M. 125.8

- NOTES**
- ① CONSTRUCT THE TOP OF THE PAVEMENT PATCHING (SPECIAL) TO MATCH THE EXISTING HMA PAVEMENT ELEVATION, EXCEPT AS NEEDED TO BLOCK OUT FOR THE POLYMER NOSING
 - ② SEE "POLYMER CONCRETE NOSING" FOR THE FINAL JOINT DETAIL
 - ③ SEE THE PLAN SCHEDULES FOR THE PROPOSED IMPROVEMENT LOCATIONS.

MODEL: D:\draft
 FILE NAME: p:\illinois\work\bechtel\com\p\midot\documents\dot_0_csa\District_6\ORD_Projects\72E71\CAD\Drawings\CD\Sheet\72E71_Sht-6-7_Details.dwg

| | | |
|---------------------------|------------|-----------|
| USER NAME = Timothy.Sharp | DESIGNED - | REVISED - |
| | DRAWN - | REVISED - |
| PLOT SCALE = \$SCALE\$ | CHECKED - | REVISED - |
| PLOT DATE = 3/19/2026 | DATE - | REVISED - |

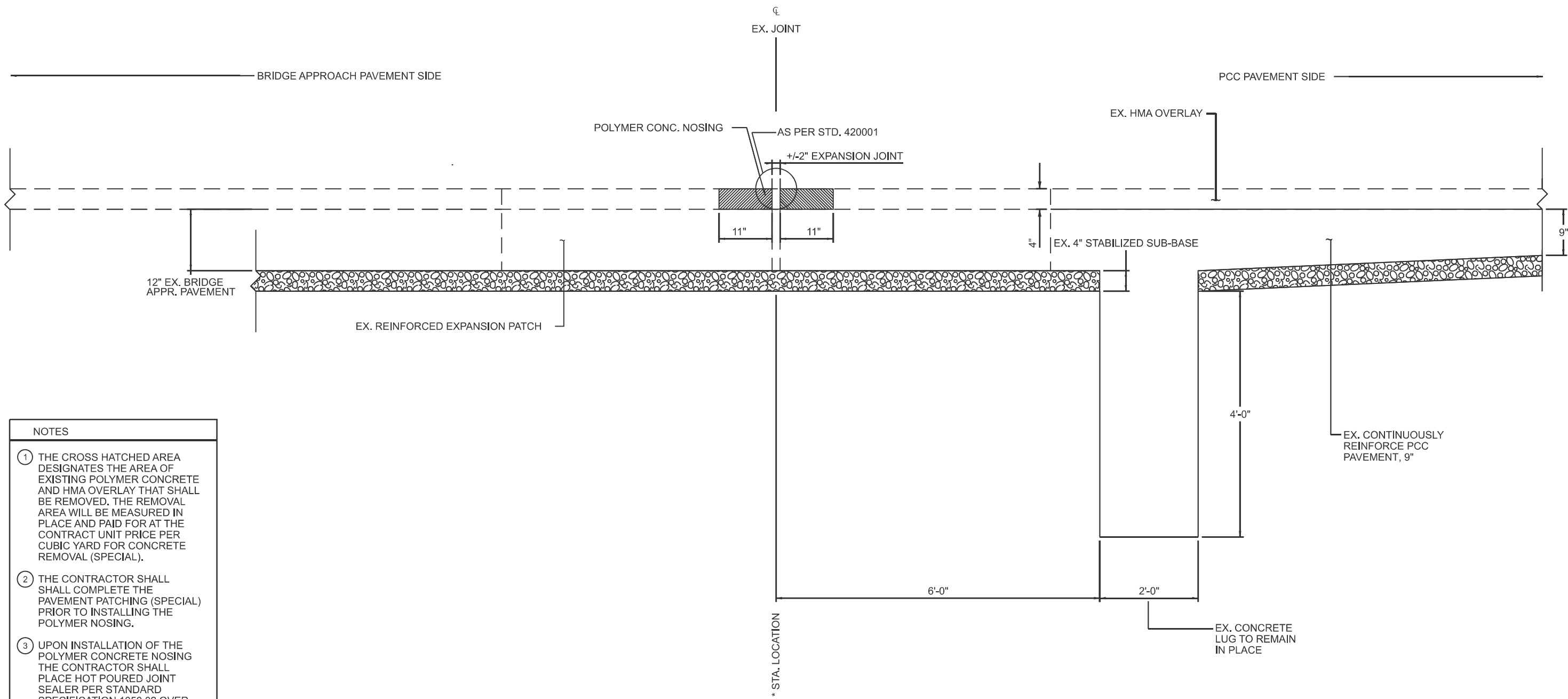
**STATE OF ILLINOIS
DEPARTMENT OF TRANSPORTATION**

DISTRICT DETAILS

| | | | | | | |
|--------|-------|----|--------|------|----|------|
| SCALE: | SHEET | OF | SHEETS | STA. | TO | STA. |
|--------|-------|----|--------|------|----|------|

| | | | | |
|---------------------------|-----------|--------|--------------|-----------|
| F.A.I. RTE. | SECTION | COUNTY | TOTAL SHEETS | SHEET NO. |
| 55 | (54-3)I-4 | LOGAN | 7 | 6 |
| CONTRACT NO. 72E71 | | | | |
| ILLINOIS FED. AID PROJECT | | | | |

POLYMER CONCRETE NOSING



* STA. LOCATION
 N.B. M.M. 123.7
 N.B. M.M. 123.7
 N.B. M.M. 125.7
 N.B. M.M. 125.8
 S.B. M.M. 125.9

- NOTES**
- ① THE CROSS HATCHED AREA DESIGNATES THE AREA OF EXISTING POLYMER CONCRETE AND HMA OVERLAY THAT SHALL BE REMOVED. THE REMOVAL AREA WILL BE MEASURED IN PLACE AND PAID FOR AT THE CONTRACT UNIT PRICE PER CUBIC YARD FOR CONCRETE REMOVAL (SPECIAL).
 - ② THE CONTRACTOR SHALL SHALL COMPLETE THE PAVEMENT PATCHING (SPECIAL) PRIOR TO INSTALLING THE POLYMER NOSING.
 - ③ UPON INSTALLATION OF THE POLYMER CONCRETE NOSING THE CONTRACTOR SHALL PLACE HOT POURED JOINT SEALER PER STANDARD SPECIFICATION 1050.02 OVER THE EXPANSION JOINT. THE HOT POURED JOINT SEALER SHALL BE MEASURED IN PLACE AND PAID FOR AT THE CONTRACT UNIT PRICE PER FOOT OF JOINT SEALER.

MODEL: D:\draft
 FILE NAME: p:\illinois\haw_bentley.com\PROJECTS\72E71\CAD\Drawings\72E71\Sheet6-7.dwg

| | | |
|---------------------------|------------|-----------|
| USER NAME = Timothy.Sharp | DESIGNED - | REVISED - |
| PLOT SCALE = \$SCALE | DRAWN - | REVISED - |
| PLOT DATE = 3/19/2026 | CHECKED - | REVISED - |
| | DATE - | REVISED - |

**STATE OF ILLINOIS
 DEPARTMENT OF TRANSPORTATION**

| DISTRICT DETAILS | | | |
|------------------|-------|-----------|--------------|
| SCALE: | SHEET | OF SHEETS | STA. TO STA. |

| F.A.I. RTE. | SECTION | COUNTY | TOTAL SHEETS | SHEET NO. |
|---------------------------|-----------|--------|--------------|-----------|
| 55 | (54-3)I-4 | LOGAN | 7 | 7 |
| CONTRACT NO. 72E71 | | | | |
| ILLINOIS FED. AID PROJECT | | | | |