

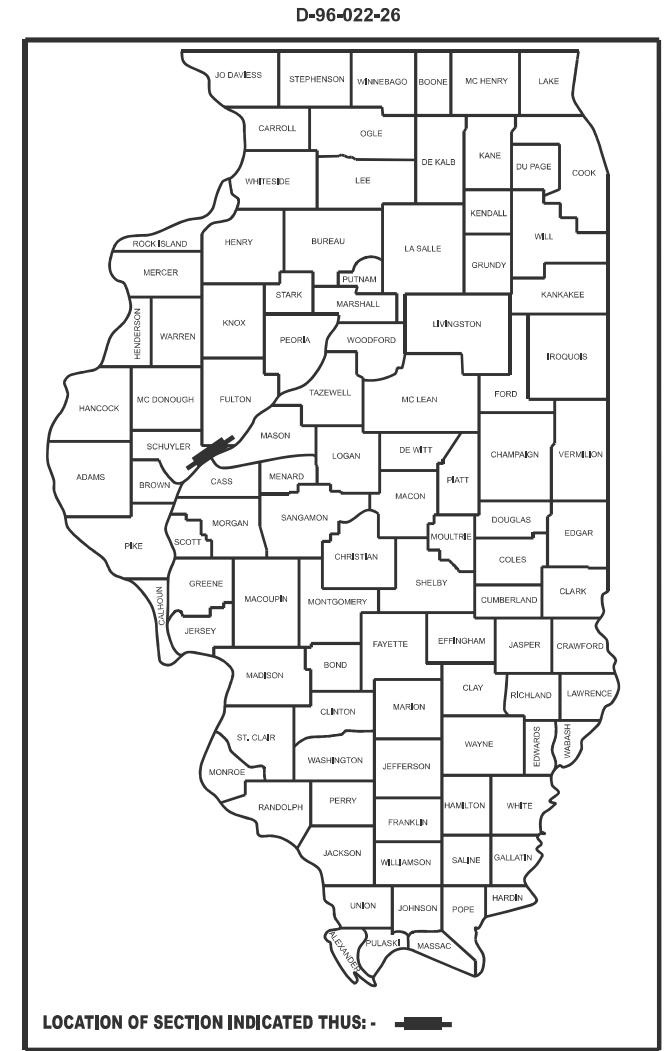
STATE OF ILLINOIS
DEPARTMENT OF TRANSPORTATION

F.A.P. RTE.	SECTION	COUNTY	TOTAL SHEETS	SHEET NO.
612	(112B-1)BRR,I	SCHUYLER	7	1
		ILLINOIS	CONTRACT NO. 72E73	

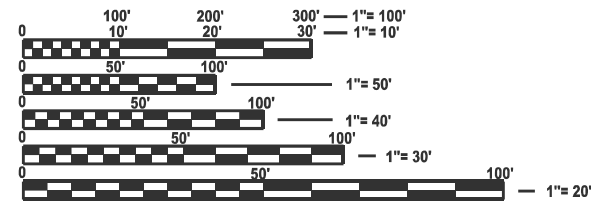
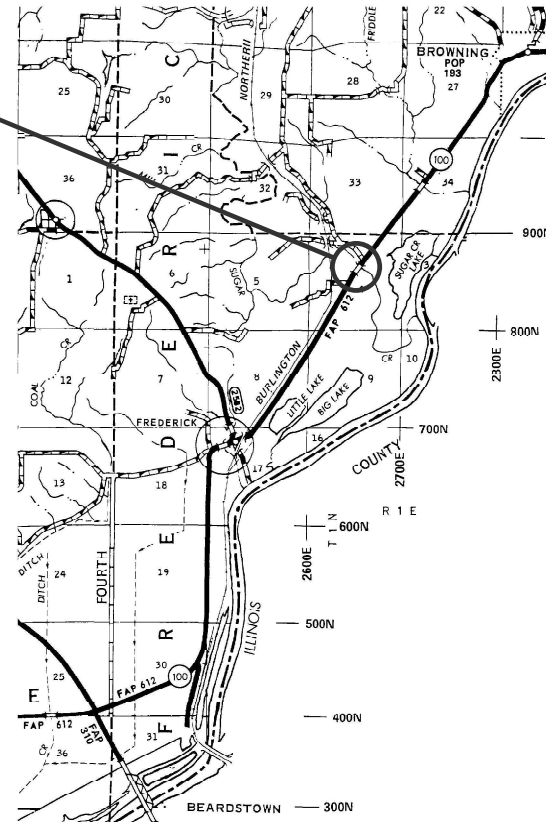
FOR INDEX OF SHEETS, SEE SHEET NO. 2

PROPOSED CONTRACT MAINTENANCE

FAP ROUTE 612 (IL 100)
SECTION (112B-1)BRR,I
PROJECT (STATE ONLY)
RIPRAP & BRIDGE REPAIR
SCHUYLER COUNTY
C-96-054-26



PROJECT LOCATION:
SN 085-0039
IL 100 OVER SUGAR CR.
2.3 MI N FREDERICK



FULL SIZE PLANS HAVE BEEN PREPARED USING STANDARD ENGINEERING SCALES. REDUCED SIZED PLANS WILL NOT CONFORM TO STANDARD SCALES. IN MAKING MEASUREMENTS ON REDUCED PLANS, THE ABOVE SCALES MAY BE USED.

J.U.L.I.E.
JOINT UTILITY LOCATION INFORMATION FOR EXCAVATION
1-800-892-0123
OR 811

PROJECT ENGINEER: BRANDON DUDLEY - (217) 785-9290
PROJECT MANAGER

CONTRACT NO. 72E73

GROSS LENGTH = 328 FT. = 0.06 MILE
NET LENGTH = 328 FT. = 0.06 MILE

STATE OF ILLINOIS
DEPARTMENT OF TRANSPORTATION

SUBMITTED March 10, 20 26
Teresa C. Price
REGIONAL ENGINEER

May 8 20 26
[Signature]
ENGINEER OF DESIGN AND ENVIRONMENT

May 8 20 26
[Signature]
DIRECTOR OF HIGHWAYS PROJECT IMPLEMENTATION

PRINTED BY THE AUTHORITY
OF THE STATE OF ILLINOIS

INDEX OF SHEETS


- 1 COVER SHEET
- 2 INDEX, STANDARDS, GENERAL NOTES, & SIGNATURES
- 3 SUMMARY OF QUANTITIES
- 4-7 BRIDGE PLANS, SN 085-0039

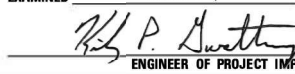
HIGHWAY STANDARDS

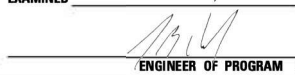
- 000001-09
- 001001-02
- 001006
- 701001-02
- 701006-05
- 701201-05
- 701901-11

GENERAL NOTES:

**STATE OF ILLINOIS
DEPARTMENT OF TRANSPORTATION
DIVISION OF HIGHWAYS
DISTRICT 6**

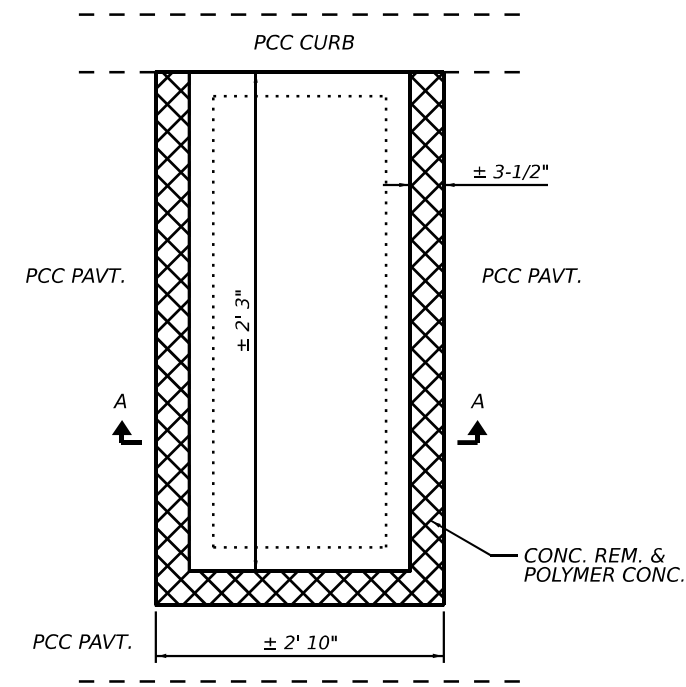
EXAMINED March 9, 2026

 ENGINEER OF OPERATIONS

EXAMINED March 6, 2026

 ENGINEER OF PROJECT IMPLEMENTATION

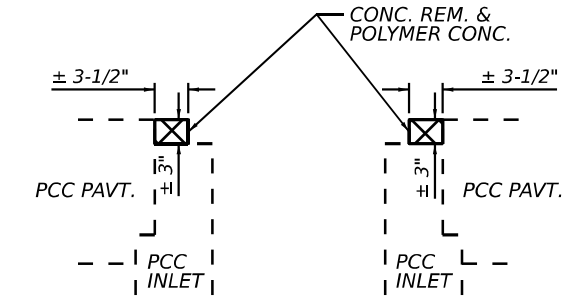
EXAMINED March 6, 2026

 ENGINEER OF PROGRAM DEVELOPMENT

MODEL: index [Sheet]
 FILE NAME: c:\p\work\pwwis\brandon.dudley\mtd119161\600_72E73 File Template\72E73 plansheet.dgn

	USER NAME = brandon.dudley	DESIGNED -	REVISED -	STATE OF ILLINOIS DEPARTMENT OF TRANSPORTATION	INDEX OF SHEETS, GENERAL NOTES HIGHWAY STANDARDS, & SIGNATURES	SCALE:	SHEET 1 OF 1 SHEETS	STA.	TO STA.	F.A.P RTE.	SECTION	COUNTY	TOTAL SHEETS	SHEET NO.	
		DRAWN -	REVISED -												
		CHECKED -	REVISED -												
	PLOT DATE = 1/12/2026	DATE -	REVISED -												
											ILLINOIS FED. AID PROJECT		CONTRACT NO. 72E73		



INLET REPAIR PLAN
(TYPICAL - 2 INLETS)



SECTION A-A

MODEL: bridge-1 (Sheet)
FILE NAME: c:\p\work\wisconsin\dudley\mtd119161\000_72E73 File Template\72E73 plansheet.dgn

USER NAME = brandon.dudley	DESIGNED -	REVISED -
	DRAWN -	REVISED -
	CHECKED -	REVISED -
PLOT DATE = 4/29/2026	DATE -	REVISED -

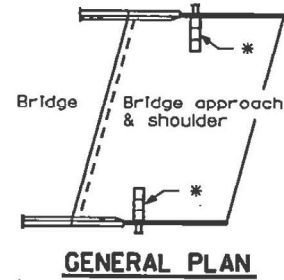
STATE OF ILLINOIS
DEPARTMENT OF TRANSPORTATION

INLET REPAIR DETAIL
SN 085-0039

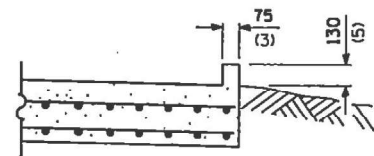
SCALE: SHEET 2 OF 4 SHEETS STA. TO STA.

F.A.P. RTE.	SECTION	COUNTY	TOTAL SHEETS	SHEET NO.
612	(112B-1)BRR.I	SCHUYLER	7	5
ILLINOIS FED. AID PROJECT			CONTRACT NO. 72E73	

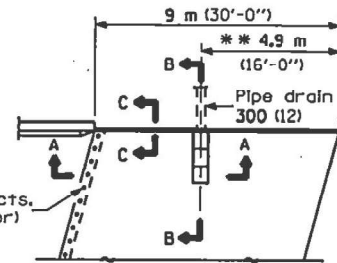
* Type B, C, or D Inlet box as required.



GENERAL PLAN



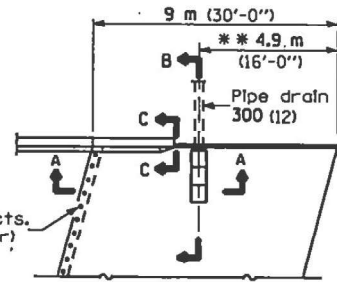
SECTION C-C



TYPICAL DETAIL PLAN (W/O Wingwall)

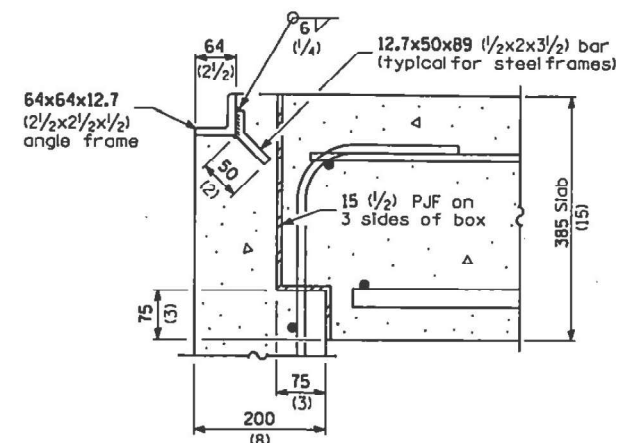
Tie bars at 300 (12) cts. (by Bridge Contractor)

** Vary this dimension as needed to position the Inlet Box and Pipe Drain between the proposed approach guardrail posts.



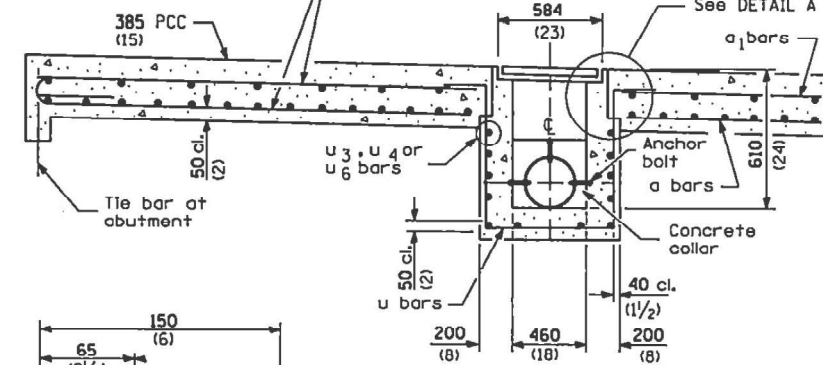
TYPICAL DETAIL PLAN (With Wingwall)

Tie bars at 300 (12) cts. (by Bridge Contractor)



DETAIL A

a & a₁ bars to be cut in field with remainder of bar used on other side of Inlet Box (See Std. 420401).



SECTION A-A

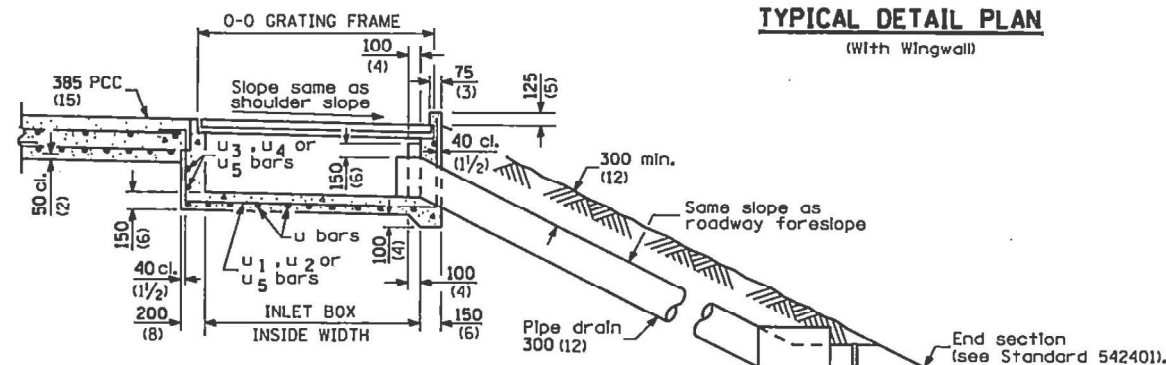
ANCHOR BOLT

(Used to tie pipe to concrete collar)

GENERAL NOTES

All exposed edges of the Inlet, except the upper perimeter, shall be beveled 20 mm (3/4 inch).

All dimensions are in millimeters (inches) unless otherwise shown.



SEC. B-B

Cast in place concrete thrust block 600x600x600 (24X24X24).

BOX OUTLET WHEN PRECAST

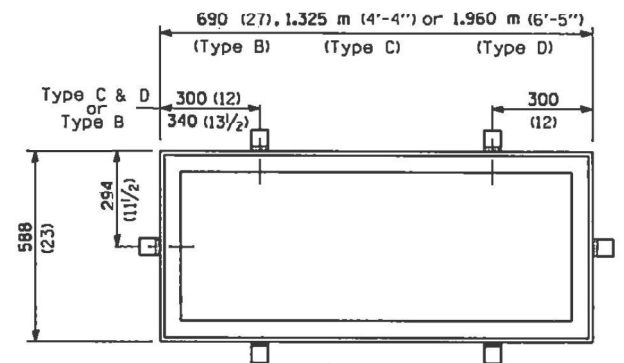
INLET TYPE	SHOULDER WIDTH	0-0 GRATING FRAME	INLET BOX INSIDE WIDTH	INLET BOX INSIDE LENGTH
Type B	Less than 1.5 m (5')	0.690 m (2'-3")	0.560 m (1'-10")	460 (18)
Type C	1.5 - 1.8 m (5' - 6')	1.325 m (4'-4")	1.195 m (3'-11")	460 (18)
Type D	Greater than 1.8 m (6')	1.960 m (6'-5")	1.830 m (6'-0")	460 (18)

DATE	REVISIONS
1-1-02	Deleted "Metal" from Section B-B.
1-1-98	Rev. ref. to "542101" to read "542401".

BRIDGE APPROACH PAVEMENT (DRAIN DETAIL)

(Sheet 1 of 2)

STANDARD 609006-02



DETAIL OF STEEL FRAME

Cast frame to have same basic dimensions.

Illinois Department of Transportation
 PASSED January 1, 2002
 ENGINEER OF POLICY AND PROCEDURES
 APPROVED January 1, 2002
 ENGINEER OF DESIGN AND ENVIRONMENT

MODEL: bridge-3 (Sheet) FILE NAME: c:\p\work\bridge\duddley\dm119161\6000_72E73_File_Template\72E73_plansheet.dgn

USER NAME = brandon.dudley	DESIGNED -	REVISED -
	DRAWN -	REVISED -
	CHECKED -	REVISED -
PLOT DATE = 1/12/2026	DATE -	REVISED -

STATE OF ILLINOIS
DEPARTMENT OF TRANSPORTATION

EXISTING PLANS (FOR INFORMATION ONLY)
SN 085-0039

SCALE: SHEET 4 OF 4 SHEETS STA. TO STA.

F.A.P. RTE.	SECTION	COUNTY	TOTAL SHEETS	SHEET NO.
612	(112B-1)BRRI	SCHUYLER	7	7
CONTRACT NO. 72E73				
ILLINOIS FED. AID PROJECT				