

STATE OF ILLINOIS
DEPARTMENT OF TRANSPORTATION

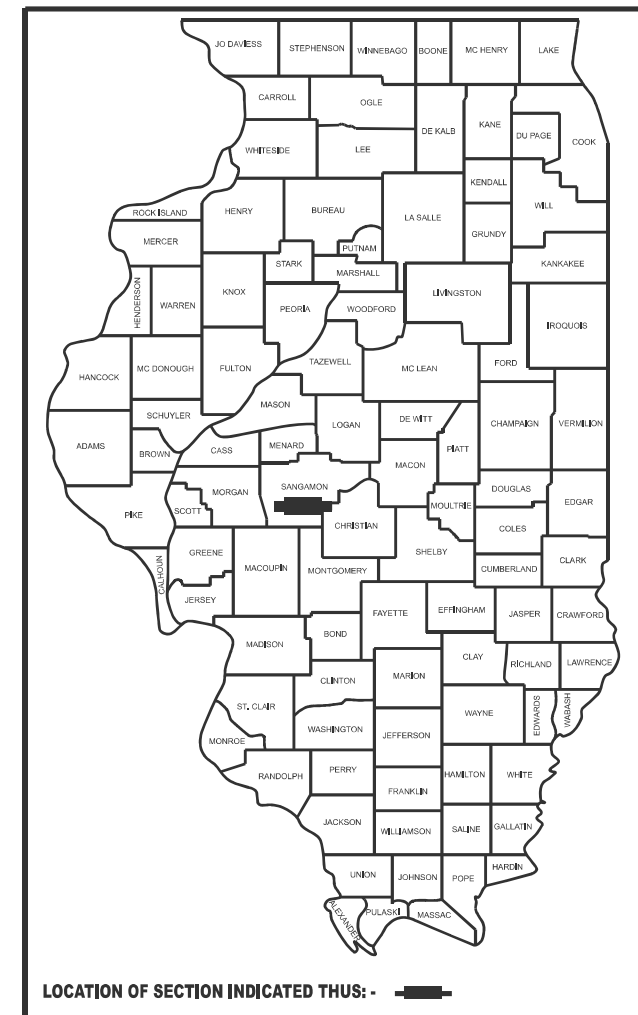
| F.A.I. RTE. | SECTION | COUNTY | TOTAL SHEETS | SHEET NO. |
|-------------|-------------------|----------|--------------------|-----------|
| 55 | (84-5-1HB,2HB)BRR | SANGAMON | 6* | 1 |
| | | ILLINOIS | CONTRACT NO. 72E76 | |

* 6 + 2 = 8 TOTAL SHEETS

FOR INDEX OF SHEETS, SEE SHEET NO. 2

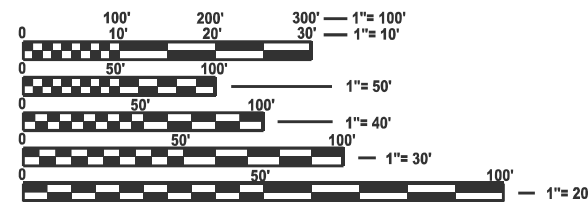
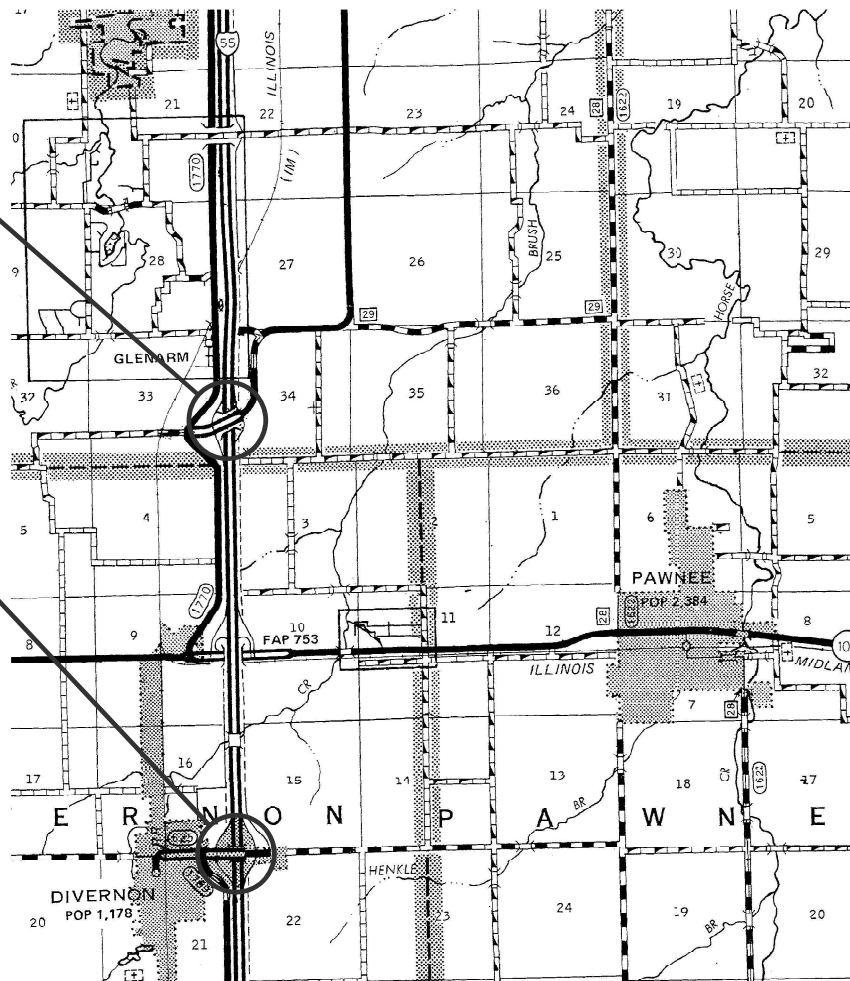
PROPOSED HIGHWAY PLANS

FAI ROUTE 55 (I-55)
SECTION (84-5-1HB,2HB)BRR
PROJECT (STATE ONLY)
BRIDGE REPAIRS
SANGAMON COUNTY
C-96-062-26



LOCATION #2:
SN 084-0111
OLD US 66 OVER I-55
@ GLENARM INT.

LOCATION #1:
SN 084-0106
DIVERNON RD OVER I-55
@ DIVERNON INT.



FULL SIZE PLANS HAVE BEEN PREPARED USING STANDARD ENGINEERING SCALES. REDUCED SIZED PLANS WILL NOT CONFORM TO STANDARD SCALES. IN MAKING MEASUREMENTS ON REDUCED PLANS, THE ABOVE SCALES MAY BE USED.

J.U.L.I.E.
JOINT UTILITY LOCATION INFORMATION FOR EXCAVATION
1-800-892-0123
OR 811

PROJECT ENGINEER: BRANDON DUDLEY - (217) 785-9290
PROJECT MANAGER

CONTRACT NO. 72E76

GROSS LENGTH = x.xx FT. = x.xxx MILE
NET LENGTH = x.xx FT. = x.xxx MILE

STATE OF ILLINOIS
DEPARTMENT OF TRANSPORTATION

SUBMITTED March 10, 2026
Teresa C. Price
REGIONAL ENGINEER

May 8 2026
[Signature]
ENGINEER OF DESIGN AND ENVIRONMENT

May 8 2026
[Signature]
DIRECTOR OF HIGHWAYS PROJECT IMPLEMENTATION

PRINTED BY THE AUTHORITY
OF THE STATE OF ILLINOIS

INDEX OF SHEETS


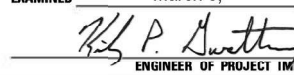

- 1 COVER SHEET
- 2 INDEX, STANDARDS, SIGNATURES, & GENERAL NOTES
- 3 SUMMARY OF QUANTITIES
- 4 SN 084-0106 BRIDGE PLANS
- 5-6 SN 084-0111 BRIDGE PLANS

STANDARDS

- 000001-09
- 001001-02
- 001006
- 701001-02
- 701006-05
- 701101-05
- 701106-02
- 701201-05
- 701901-11

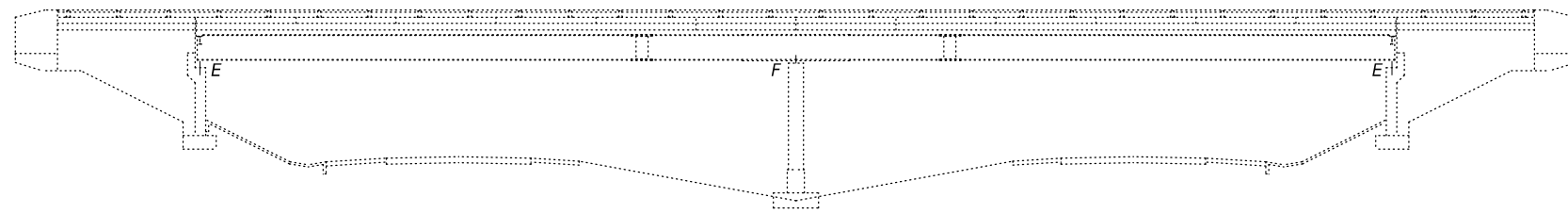
GENERAL NOTES:

THE CONTRACTOR SHALL CORRECT ELEVATION DIFFERENCES IN THE PROFILE GRADE ACROSS THE EXISTING EXPANSION JOINTS AT THE ENDS OF THE DECK. THIS SHALL BE ACCOMPLISHED BY ADDING SHIM PLATES AT LOCATIONS SHOWN ON THE PLANS. NO MORE THAN 2 SHIM PLATES SHALL BE ADDED TO EACH BEARING LOCATION. HOWEVER, THE CONTRACTOR IS ENCOURAGED TO USE THE MINIMAL NUMBER OF SHIMS AT EACH LOCATION AND MINIMUM SHIM THICKNESS SHALL BE 1/8". THE CONTRACTOR SHALL FIELD VERIFY THE EXISTING DIMENSIONS AND PROPOSE ALL VERTICAL ADJUSTMENTS TO THE ENGINEER PRIOR TO ORDERING THE EXTRA SHIMS. THE ALLOWABLE ELEVATION TOLERANCES BETWEEN THE TWO SIDES OF THE EXPANSION JOINTS SHALL BE 1/4". RECORDING ACCURATE MEASUREMENTS AND ORDERING PROPERLY SIZED BEARING EXTENSIONS SHALL BE THE SOLE RESPONSIBILITY OF THE CONTRACTOR.

| | |
|---|----------------|
| STATE OF ILLINOIS DEPARTMENT OF TRANSPORTATION DIVISION OF HIGHWAYS DISTRICT 6 | |
| EXAMINED | March 9, 20 26 |
|  ENGINEER OF OPERATIONS | |
| EXAMINED | March 6, 20 26 |
|  ENGINEER OF PROJECT IMPLEMENTATION | |
| EXAMINED | March 6, 20 26 |
|  ENGINEER OF PROGRAM DEVELOPMENT | |

MODEL: Index [Sheet]
FILE NAME: c:\p\work\pwr\std\du\du\m\120360112E76 plansheet.dgn

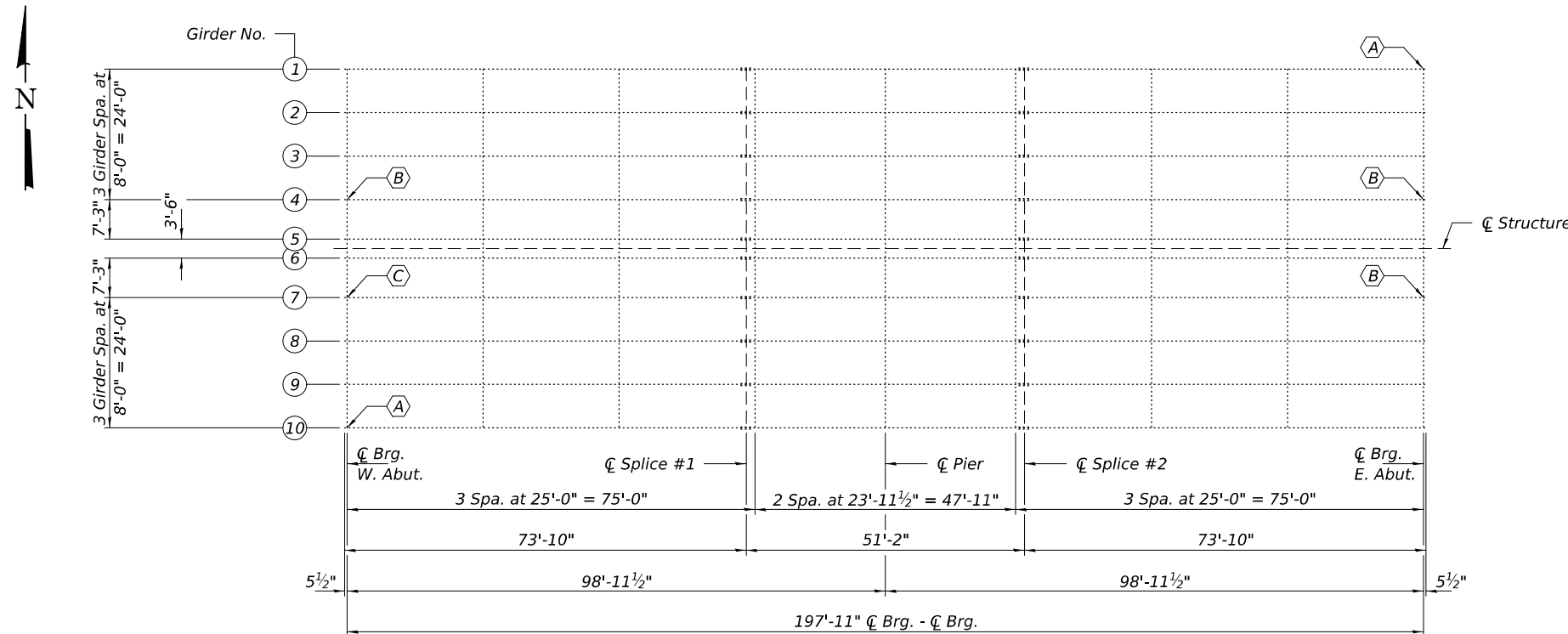
| | | | | | | | | | | | | | | | | |
|--|----------------------------|------------|-----------|---|--|--------|---------------------|------|---------|---------------|----------|------------------|-------------------|--------------|---|--------------------|
| | USER NAME = brandon.dudley | DESIGNED - | REVISED - | STATE OF ILLINOIS DEPARTMENT OF TRANSPORTATION | INDEX OF SHEETS, HIGHWAY STANDARDS, GENERAL NOTES, & SIGNATURES | SCALE: | SHEET 1 OF 1 SHEETS | STA. | TO STA. | F.A.I RTE. | SECTION | COUNTY | TOTAL SHEETS | SHEET NO. | | |
| | | DRAWN - | REVISED - | | | | | | | | | 55 | (84-5-1HB,2HB)BRR | SANGAMON | 6 | 2 |
| | | CHECKED - | REVISED - | | | | | | | | | | | | | |
| | PLOT DATE = 2/10/2026 | DATE - | REVISED - | | | | | | | | | | | | | CONTRACT NO. 72E76 |
| | | | | | | | | | | | ILLINOIS | FED. AID PROJECT | | | | |



ELEVATION

GENERAL NOTES

All structural steel shall conform to AASHTO Classification M-270 Gr. 36, unless otherwise noted.
 Fasteners shall be ASTM F 3125 Grade A325 Type 1, mechanically galvanized bolts. Bolts $\frac{3}{4}"\varnothing$, holes $\frac{13}{16}"\varnothing$, unless otherwise noted.
 Plan dimensions and details relative to the existing structure have been taken from existing plans and are subject to nominal construction variations. The Contractor shall field verify existing dimensions and details affecting new construction and make necessary approved adjustments prior to construction or ordering of materials. Such variations shall not be cause for additional compensation for a change in scope of the work, however, the Contractor will be paid for the quantity actually furnished at the unit price bid for the work.
 Existing structural steel that will be in contact with new structural steel shall be cleaned and painted prior to erection as required by the Special Provision "Cleaning and Painting Contact Surface Areas of Existing Steel Structures", and the Standard Specifications. The color of the final finish coat shall match existing paint. Fascia beams need to be Interstate Green, Munsell No. 7.5G 4/8. Internal beams need to be Gray, Munsell No. 5B 7/1, unless existing color varies.
 No field welding is permitted except as specified in the contract documents.
 All new structural steel and bearing assemblies shall be hot-dip galvanized. See Special Provisions for "Hot Dip Galvanizing for Strutral Steel".
 Cost of removal and re-installation of all members necessary to complete the work as detailed on the plans and as specified in the Special Provisions shall be included with Structural Steel Repairs.
 The existing structural steel coating contains lead. The Contractor shall take appropriate precautions to deal with the presence of lead on this project.



PARTIAL FRAMING PLAN

- (A) - Girder End Repair using three sided boxes. See Repair Detail A.
- (B) - Girder End Repair using three sided boxes. See Repair Detail B.
- (C) - Girder End Repair using three sided boxes. See Repair Detail C.

TOTAL BILL OF MATERIAL

| ITEM | UNIT | QUANTITY |
|-------------------------|-------|----------|
| Structural Steel Repair | Pound | 730 |



Expires: November 30, 2026

MODEL: 72E76-004
 FILE NAME: p:\dot-pw-bentley.com\FWIDOT\Documents\DOT_O_ces\Bureau of Bridges and Structures\OBM Projects\0840106\CADDData\Structures\0840106.dgn

| | | |
|--------------------------------|------------|---------------------|
| DESIGNED - Christopher A. Loeh | EXAMINED - | DATE - MAY 06, 2026 |
| CHECKED - Chi-Cheung Chau | PASSED - | REVISED - |
| DRAWN - daburdell | | REVISED - |
| CHECKED - CAL CCC SMR | | |

| | |
|---|--|
| JUSTIN W. MANN 081-005947 LICENSED STRUCTURAL ENGINEER STATE OF ILLINOIS | |
| ENGINEER OF STRUCTURAL SERVICES ACTING ENGINEER OF BRIDGES AND STRUCTURES | |

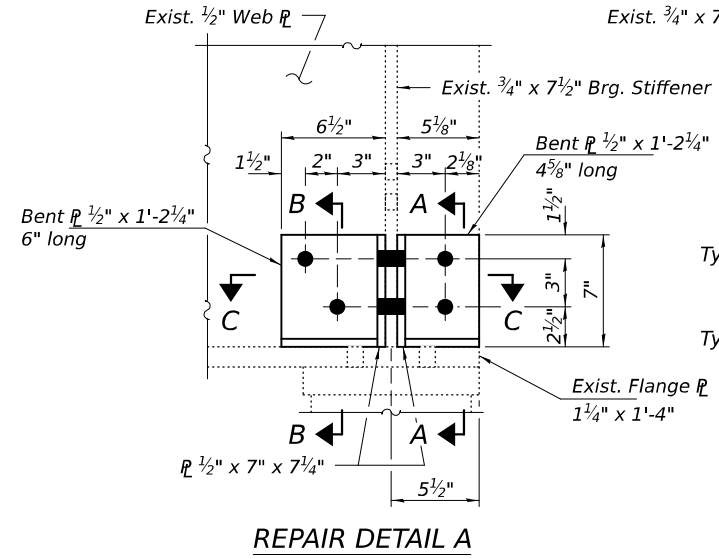
**STATE OF ILLINOIS
 DEPARTMENT OF TRANSPORTATION**

**GENERAL PLAN AND ELEVATION
 FAS 625 (DIVERNON RD) OVER I-55
 SN 084-0106**

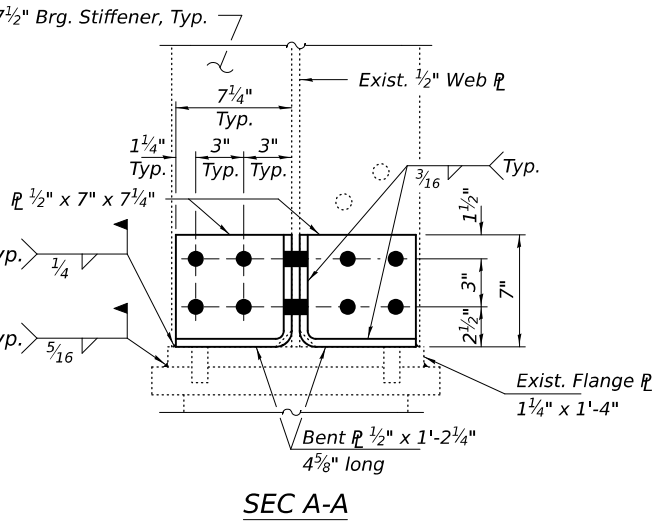
| | | | | |
|-----------------------------|------------------|----------|--------------|-----------|
| F.A.I. RTE. | SECTION | COUNTY | TOTAL SHEETS | SHEET NO. |
| 55 | (84-5-1HB,2HB)BR | SANGAMON | 6 | 4 |
| CONTRACT NO. 72E76 | | | | |
| ILLINOIS FED. AID PROJECT | | | | |

SHEET 1 OF 3 SHEETS

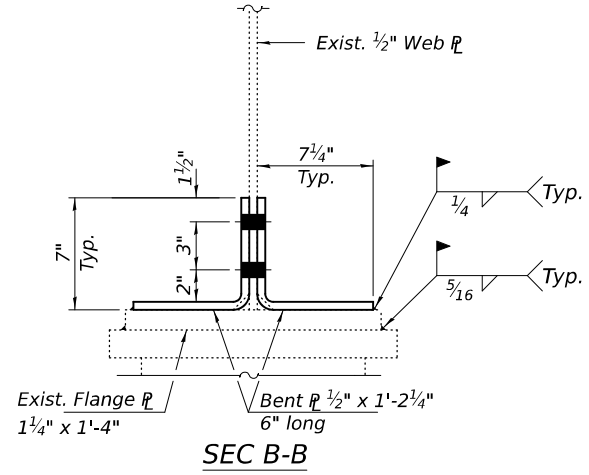
MODEL: 72E76-004A
 FILE NAME: p:\dot-pw-bentley.com\FWIDOT\Documents\DOT_O_ces\Bureau of Bridges and Structures\OBM Projects\0840106\CADDData\Structures\0840106.dgn



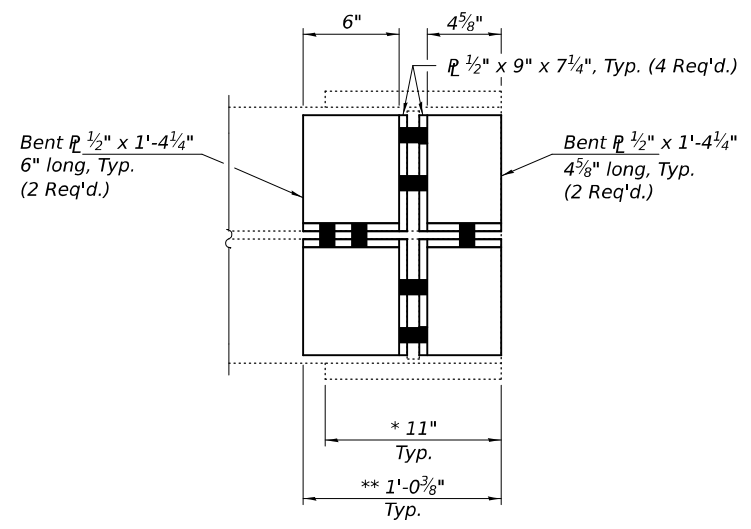
REPAIR DETAIL A



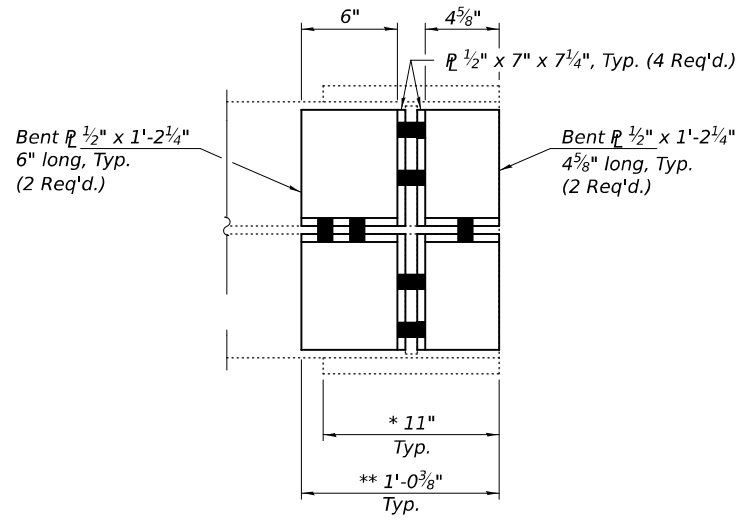
SEC A-A



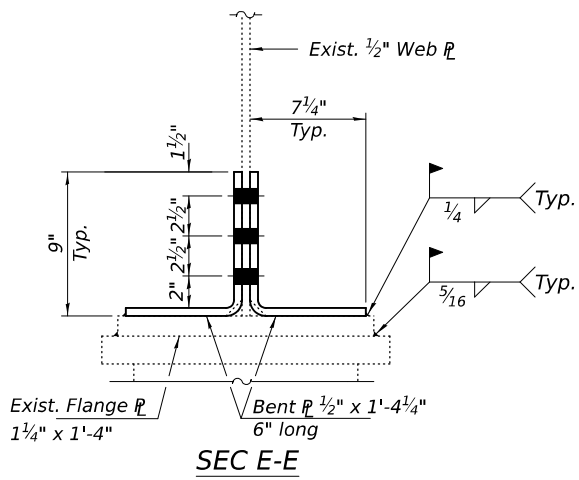
SEC B-B



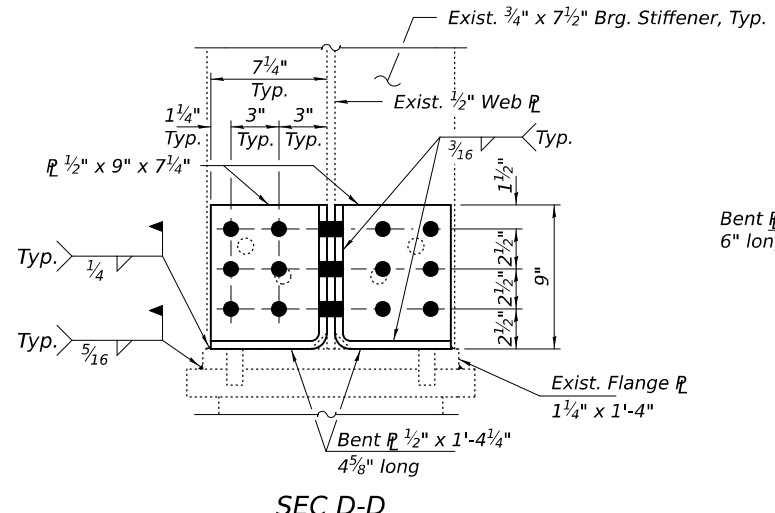
SEC F-F



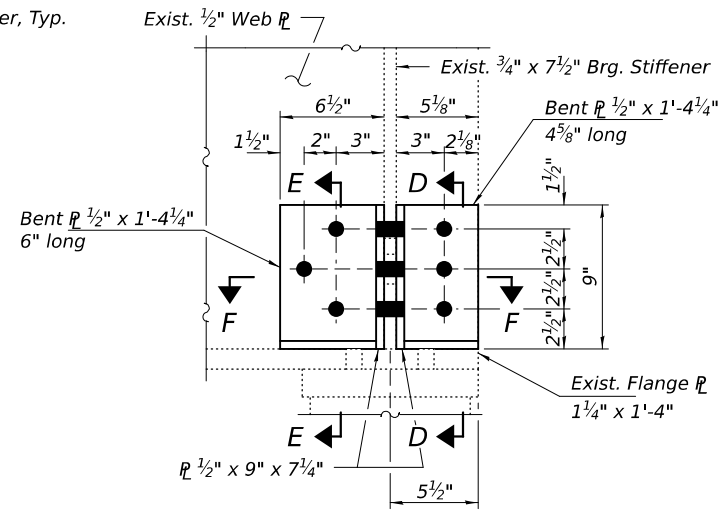
SEC C-C



SEC E-E



SEC D-D



REPAIR DETAIL B

BOLT HOLE LEGEND

- - Shop drill holes in new steel.
- - Field drill holes using existing or new steel as template.
- * Weld bent plate to bottom flange.
- ** Weld bottom flange to top bearing plate.

| | |
|-----------------------|---|
| DESIGNED - CAL | EXAMINED |
| CHECKED - CCC | ENGINEER OF STRUCTURAL SERVICES |
| DRAWN - daburdell | PASSED |
| CHECKED - CAL CCC SMR | ACTING ENGINEER OF BRIDGES AND STRUCTURES |

DATE - MAY 06, 2026
 REVISIONS:
 REVISION -
 REVISION -

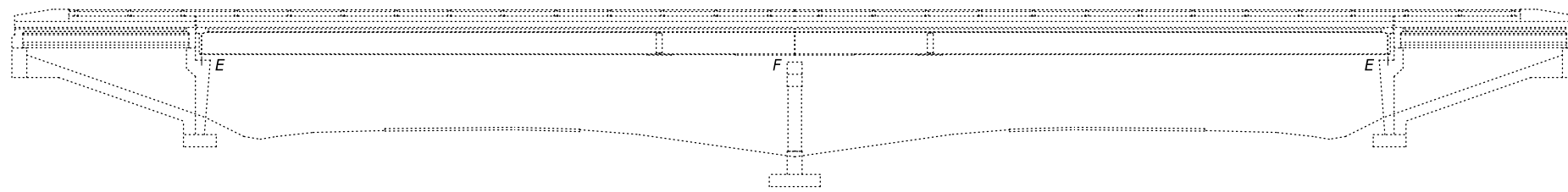
STATE OF ILLINOIS
 DEPARTMENT OF TRANSPORTATION

REPAIR DETAILS
 SN 084-0106

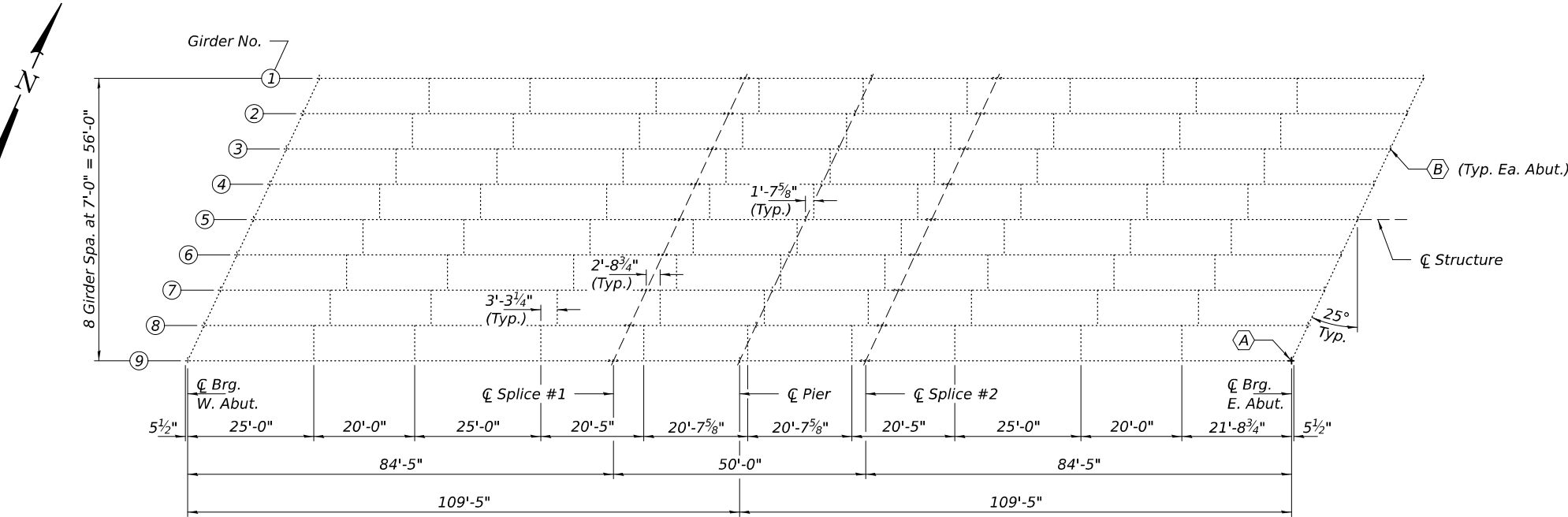
SHEET 2 OF 3 SHEETS

| | | | | |
|--------------------|--------------------------|-----------------|---------------------------|--------------|
| F.A.I. RTE. 55 | SECTION (84-5-1HB,2HB)BR | COUNTY SANGAMON | TOTAL SHEETS 6 | SHEET NO. 4A |
| CONTRACT NO. 72E76 | | | ILLINOIS FED. AID PROJECT | |

REV - MS



ELEVATION

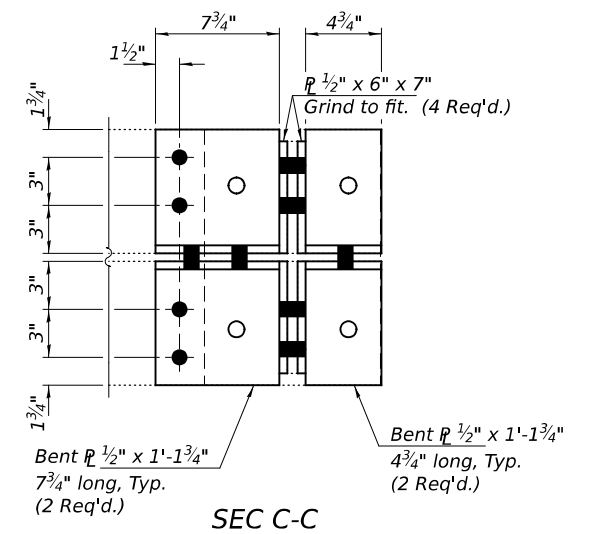


PARTIAL FRAMING PLAN

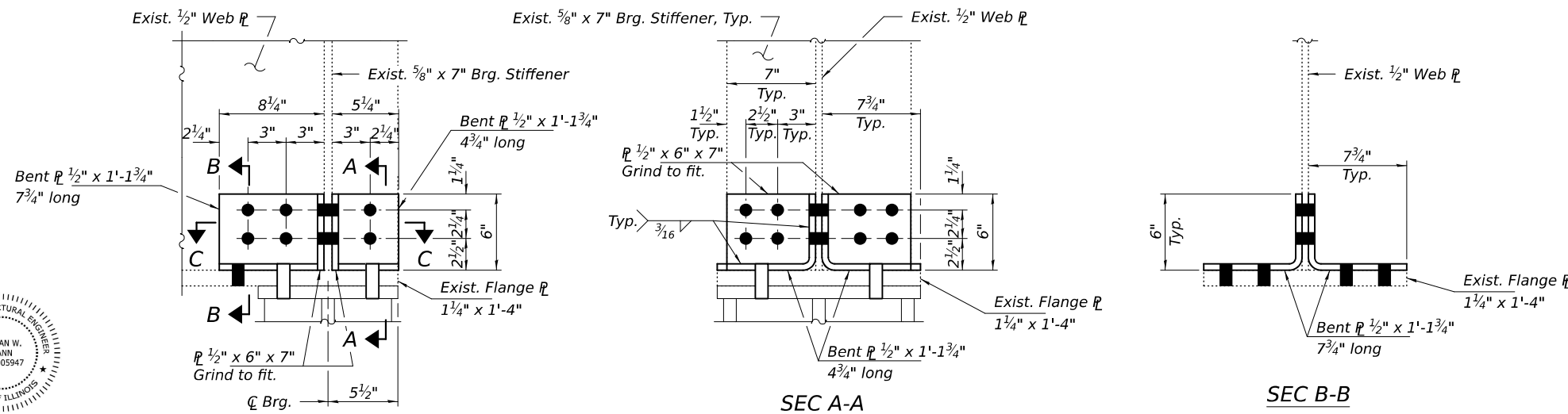
- (A) - Girder End Repair using three sided boxes.
- (B) - Remove & replace with new Elastomeric Bearings.

GENERAL NOTES

All structural steel shall conform to AASHTO Classification M-270 Gr. 36, unless otherwise noted.
 Fasteners shall be ASTM F 3125 Grade A325 Type 1, mechanically galvanized bolts.
 Bolts 3/4"Ø, holes 13/16"Ø, unless otherwise noted.
 Plan dimensions and details relative to the existing structure have been taken from existing plans and are subject to nominal construction variations. The Contractor shall field verify existing dimensions and details affecting new construction and make necessary approved adjustments prior to construction or ordering of materials. Such variations shall not be cause for additional compensation for a change in scope of the work, however, the Contractor will be paid for the quantity actually furnished at the unit price bid for the work.
 Existing structural steel that will be in contact with new structural steel shall be cleaned and painted prior to erection as required by the Special Provision "Cleaning and Painting Contact Surface Areas of Existing Steel Structures", and the Standard Specifications. The color of the final finish coat shall match existing paint. Fascia beams need to be Interstate Green, Munsell No. 7.5G 4/8. Internal beams need to be Gray, Munsell No. 5B 7/1, unless existing color varies.
 No field welding is permitted except as specified in the contract documents.
 All new structural steel and bearing assemblies shall be hot-dip galvanized. See Special Provisions for "Hot Dip Galvanizing for Structural Steel".
 The existing structural steel coating contains lead. The Contractor shall take appropriate precautions to deal with the presence of lead on this project.



SEC C-C



REPAIR DETAIL

SEC A-A

SEC B-B

BOLT HOLE LEGEND

- - Shop drill holes in new steel.
- - Field drill holes using existing or new steel as template.

TOTAL BILL OF MATERIAL

| ITEM | UNIT | QUANTITY |
|--|-------|----------|
| Structural Steel Repair | Pound | 80 |
| Furnishing and Erecting Structural Steel | Pound | 3530 |
| Elastomeric Bearing Assembly, Type I | Each | 18 |
| Jack and Remove Existing Bearings | Each | 18 |
| Anchor Bolts, 1"Ø | Each | 36 |

MODEL: 72E76-005
 FILE NAME: p:\dot-pw-bentley.com\FWIDOT\Documents\DOT_O_ces\Bureau of Bridges and Structures\OBM Projects\0840111\CADDData\Structures\0840111B.dgn

Expires: November 30, 2026

| | |
|------------|---------------------|
| DESIGNED - | Christopher A. Loeh |
| CHECKED - | Chi-Cheung Chau |
| DRAWN - | daburdell |
| CHECKED - | CAL CCC SMR |

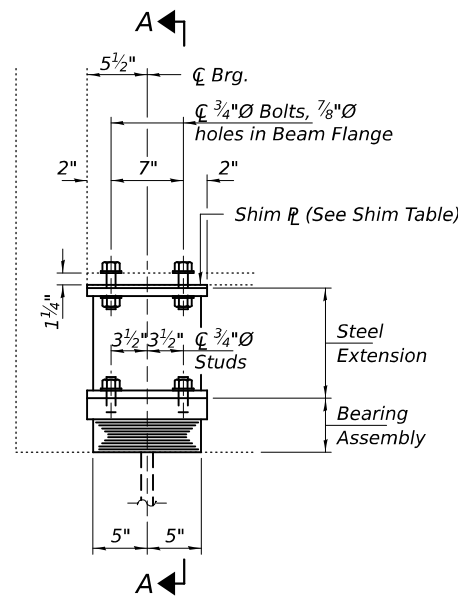
| | | | |
|----------|----------------|-----------|-------------|
| EXAMINED | | DATE - | MAY 6, 2026 |
| PASSED | Justin W. Mann | REVISIONS | |

| | |
|-----------|--|
| REVISIONS | |
| REVISIONS | |

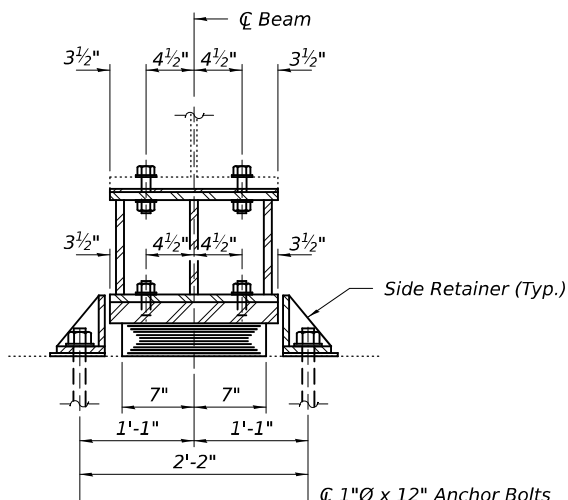
STATE OF ILLINOIS
 DEPARTMENT OF TRANSPORTATION

GENERAL PLAN AND ELEVATION
 HORSE FARM ROAD OVER I-55
 SN 084-0111
 SHEET 1 OF 2 SHEETS

| F.A.I. RTE. | SECTION | COUNTY | TOTAL SHEETS | SHEET NO. |
|---------------------------|-------------------|----------|--------------|-----------|
| 55 | (84-5-1HB,2HB)BRR | SANGAMON | 6 | 5 |
| CONTRACT NO. 72E76 | | | | |
| ILLINOIS FED. AID PROJECT | | | | |



ELEVATION AT ABUTMENT



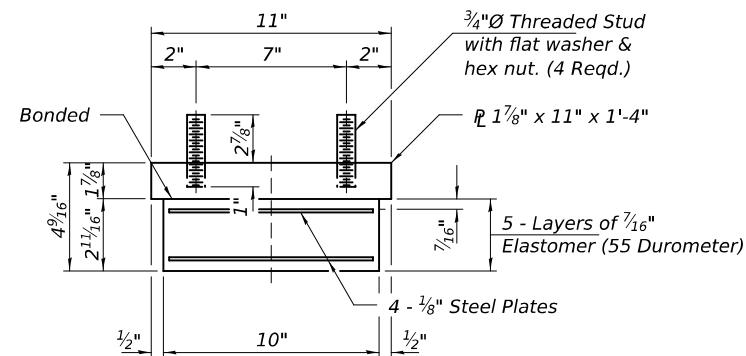
SECTION A-A

BEAM REACTIONS

| | | |
|----------------|-----|------|
| R ϕ | (K) | 47.2 |
| R \downarrow | (K) | 41.0 |
| Imp. | (K) | 8.7 |
| R (Total) | (K) | 96.9 |

Notes:
 Diaphragm removal and reinstallation may be required to facilitate drilling holes. Cost included with Furnishing and Erecting Structural Steel.
 New steel extensions, shim plates and connection bolts are included with Furnishing and Erecting Structural Steel.
 Prior to ordering any material, the Contractor shall verify in the field all bearing height and shim thickness dimensions. Adjustment must account for deck heave due to pack rust (if present).
 Min. jack capacity = 55 Tons.
 Anchor bolts shall be ASTM F1554 all-thread (or an Engineer-approved alternate material) of the grade(s) and diameter(s) specified. The corresponding specified grade of AASHTO M314 anchor bolts may be used in lieu of ASTM F1554.
 Drilled and set anchor bolts shall be installed according to Article 521.06 of the Standard Specifications.
 Cost of Side retainers and Stainless Steel plates shall be included in the cost of Elastomeric Bearing Assembly, Type I.

TYPE I ELASTOMERIC EXP. BRG.

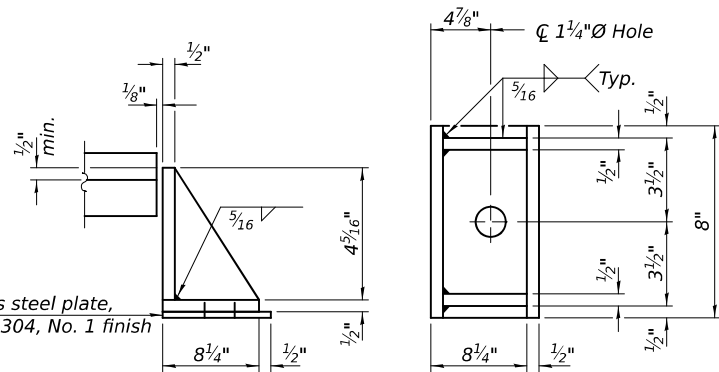


BEARING ASSEMBLY

Note:
 Shim plates shall not be placed under Bearing Assembly.

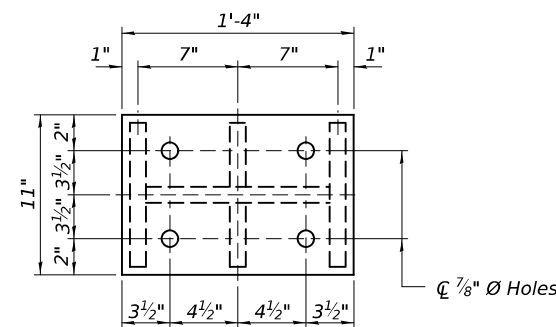
SHIM TABLE

| Location | Girder | | | | | | | | |
|----------|--------|---|---|---|------|------|---|---|---|
| | 1 | 2 | 3 | 4 | 5 | 6 | 7 | 8 | 9 |
| W. Abut. | - | - | - | - | 5/8" | 1/2" | - | - | - |
| E. Abut. | - | - | - | - | 5/8" | 1/2" | - | - | - |

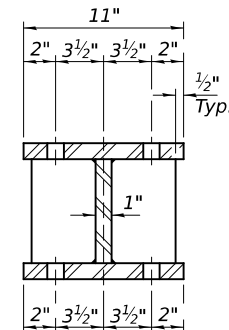


SIDE RETAINER

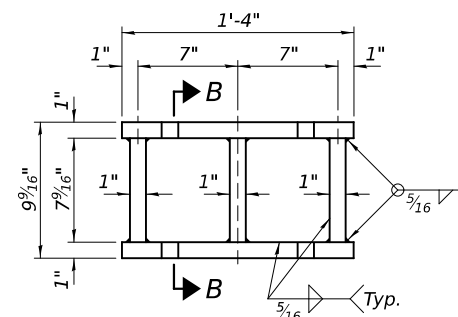
Equivalent rolled angle with stiffeners will be allowed in lieu of welded plates.



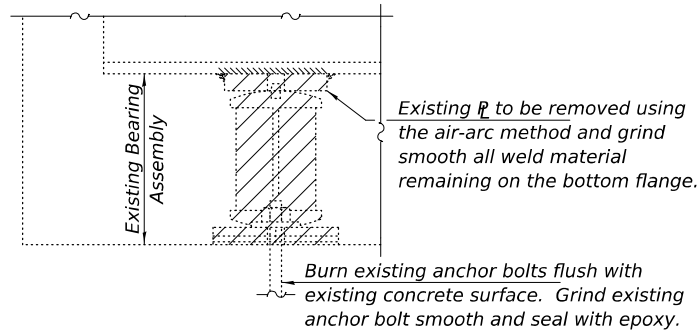
PLAN TOP AND BOTTOM PLATE



SECTION B-B



STEEL EXTENSION DETAIL



EXISTING BEARING REMOVAL DETAIL

Cost included with Jack and Remove Existing Bearings.

BILL OF MATERIAL

| Item | Unit | Total |
|--|-------|-------|
| Elastomeric Bearing Assembly, Type I | Each | 18 |
| Jack and Remove Existing Bearings | Each | 18 |
| Furnishing and Erecting Structural Steel | Pound | 3530 |
| Anchor Bolts, 1"Ø | Each | 36 |

MODEL: 72E76-006
 FILE NAME: p:\dot-pw-bentley.com\FWIDOT\Documents\OBM Projects\0840111\CADDData\Structures\0840111B.dgn

R-EBWE-TY I 03-24-2026

| | |
|-----------------------|---|
| DESIGNED - CAL | EXAMINED |
| CHECKED - CCC | ENGINEER OF STRUCTURAL SERVICES |
| DRAWN - daburdell | PASSED |
| CHECKED - CAL CCC SMR | ACTING ENGINEER OF BRIDGES AND STRUCTURES |

DATE - MAY 6, 2026
 REVISIONS

STATE OF ILLINOIS
 DEPARTMENT OF TRANSPORTATION

BEARING REPLACEMENT DETAILS
 SN 084-0111

SHEET 2 OF 2 SHEETS

| | | | | |
|---------------------------|-------------------|----------|--------------|-----------|
| F.A.I. RTE. | SECTION | COUNTY | TOTAL SHEETS | SHEET NO. |
| 55 | (84-5-1HB,2HB)BRR | SANGAMON | 6 | 6 |
| CONTRACT NO. 72E76 | | | | |
| ILLINOIS FED. AID PROJECT | | | | |