

FOR INDEX OF SHEETS, SEE SHEET NO. 2

ADT = 2,100

OMISSIONS:

**NB & SB STATION 434+90 TO 444+35
 NB STATION 235+21 TO 220+82
 SB STATION 235+21 TO 220+22**

**STATE OF ILLINOIS
 DEPARTMENT OF TRANSPORTATION**

**PROPOSED
 HIGHWAY PLANS**

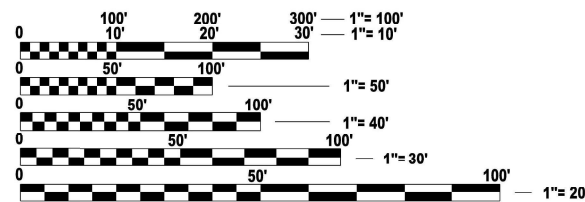
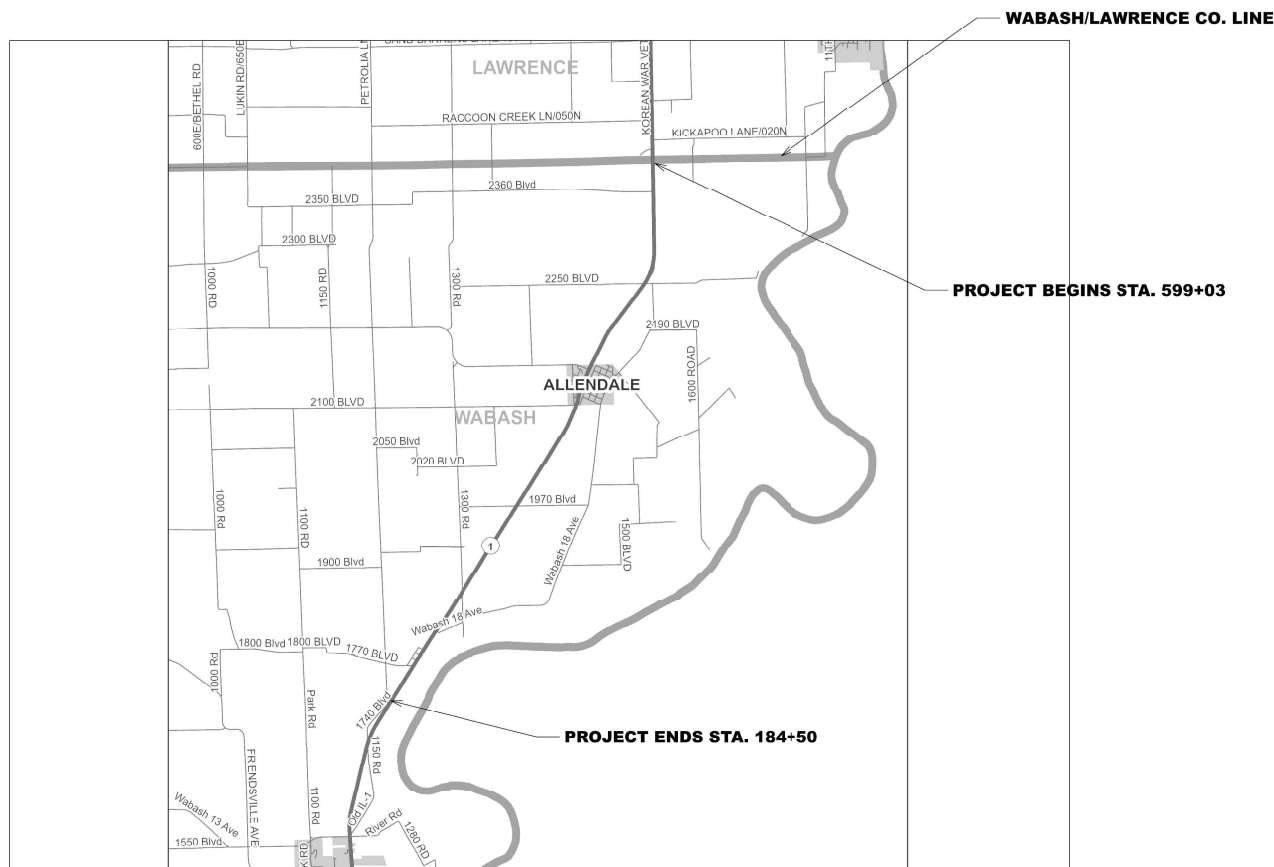
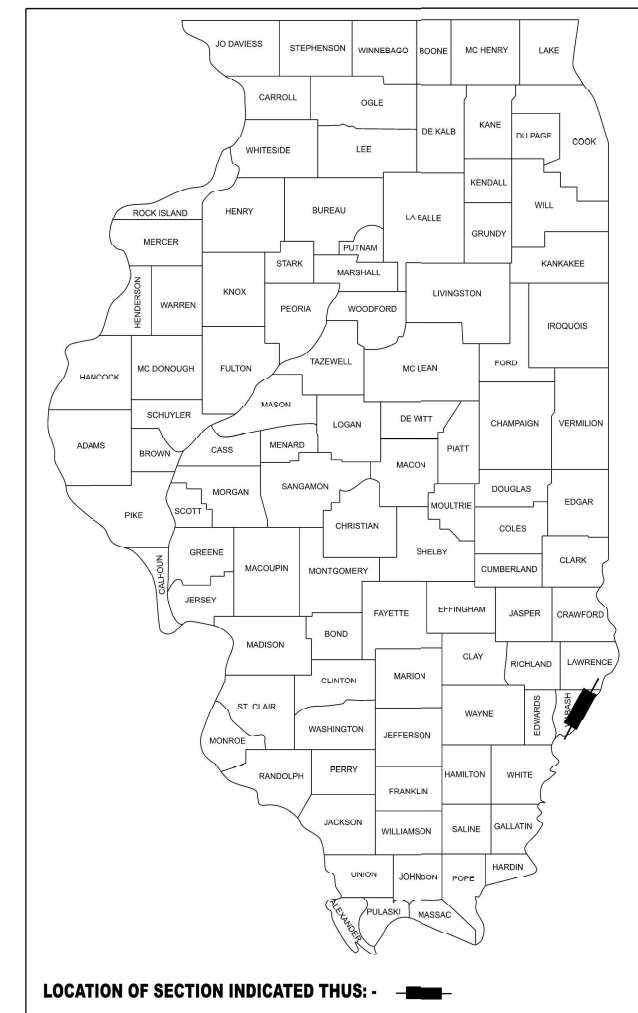
**FAP ROUTE 332 (ILL 1)
 SECTION (12Z,12,13)SR**

**SHOULDER RECONSTRUCTION
 WABASH COUNTY**

C-97-045-26

F.A.P. RTE.	SECTION	COUNTY	TOTAL SHEETS	SHEET NO.
332	(12Z,12,13)SR	WABASH	3	1
		ILLINOIS	CONTRACT NO. 74E26	

D-97-044-26



FULL SIZE PLANS HAVE BEEN PREPARED USING STANDARD ENGINEERING SCALES. REDUCED SIZED PLANS WILL NOT CONFORM TO STANDARD SCALES. IN MAKING MEASUREMENTS ON REDUCED PLANS, THE ABOVE SCALES MAY BE USED.

**J.U.L.I.E.
 JOINT UTILITY LOCATION INFORMATION FOR EXCAVATION
 1-800-892-0123
 OR 811**

**PROJECT ENGINEER: TRAVIS WALK
 PROJECT MANAGER: JARED BLOEMER**

CONTRACT NO. 74E26

GROSS LENGTH = 40,656 FT. = 7.7 MILE

**STATE OF ILLINOIS
 DEPARTMENT OF TRANSPORTATION**

SUBMITTED March 25, 2026
Teresa C. Price
 REGIONAL ENGINEER

May 8, 2026
[Signature]
 ENGINEER OF DESIGN AND ENVIRONMENT

May 8, 2026
[Signature]
 DIRECTOR OF HIGHWAYS PROJECT IMPLEMENTATION

**PRINTED BY THE AUTHORITY
 OF THE STATE OF ILLINOIS**

INDEX OF SHEETS

SHEET NO.	ITEM
1	COVER SHEET
2	INDEX OF SHEETS, LIST OF STANDARDS, GENERAL NOTES, AND SHOULDER DETAIL
3	SUMMARY OF QUANTITIES

GENERAL NOTES

AGGREGATE FOR MAILBOX TURNOUTS AND PRIVATE ENTRANCES SHALL BE PLACED AS DIRECTED BY THE ENGINEER AND WILL BE PAID FOR AS AGGREGATE SHOULDERS, TYPE B.

A RATE OF APPLICATION OF 2.05 TONS/CU YD HAS BEEN USED IN CALCULATING PLAN QUANTITY.

THE FOLLOWING STANDARDS ARE A PART OF THESE PLANS AND ARE INCLUDED AFTER SHEET NO. 3:

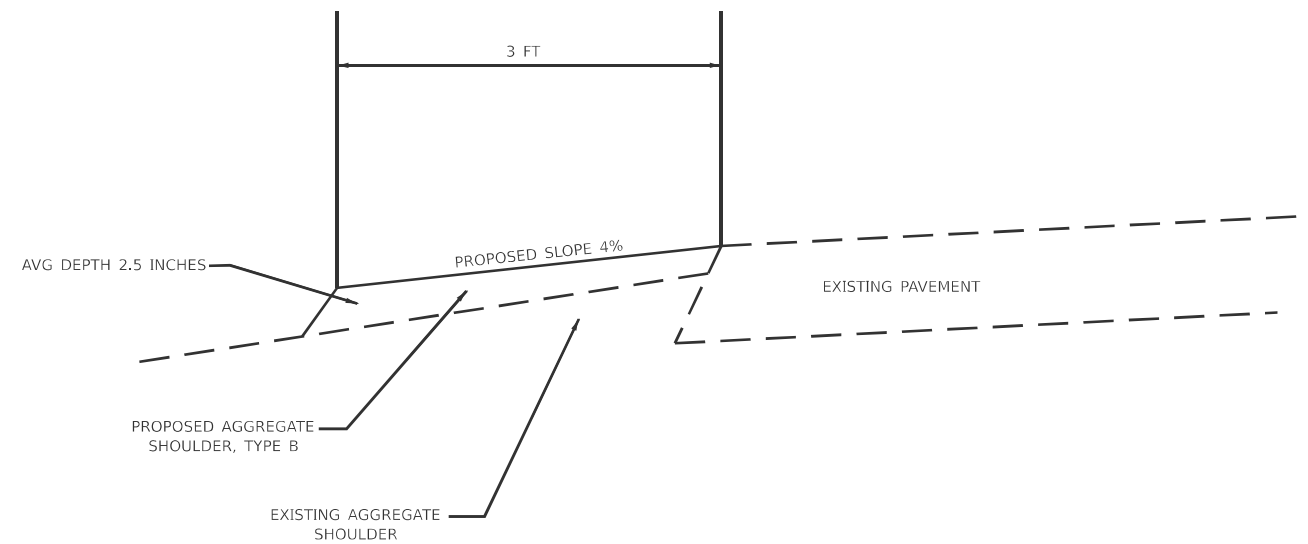
STANDARD NO.	DESCRIPTION
000001-09	STANDARD SYMBOLS, ABBREVIATIONS AND PATTERNS
406201-01	MAILBOX TURNOUT
701001-02	OFF-ROAD OPERATIONS, 2L, 2W, MORE THAN 15' AWAY
701006-05	OFF-ROAD OPERATIONS, 2L, 2W, 15' TO 24" FROM PAVEMENT EDGE
701011-04	OFF-ROAD MOVING OPERATIONS, 2L, 2W, DAY ONLY
701301-04	LANE CLOSURE, 2L, 2W, SHORT TIME OPERATIONS
701306-04	LANE CLOSURE, 2L, 2W, SLOW MOVING OPERATIONS DAY ONLY, FOR SPEEDS >= 45 MPH
701901-11	TRAFFIC CONTROL DEVICES

NGS Monument for Reference

POINT	NORTHING	EASTING	DESCRIPTION
AIRPORT	705610.35	1158136.36	Disk in conc. Monument
EW 094	674944.001	1160473.475	SS Rod in Sleeve

PSM's to Protect or Reset

POINT	NORTHING	EASTING	STATION	OFFSET	DESCRIPTION	PROPOSED RESET
1001	690393.873	1166862.366	577+20	1.5' LT.	Mag Nail Found Center - Sec36,T2N,R12W	Type II - Alum. IDOT Disk - Flush
1002	687734.929	1166851.286	550+55	3.0' RT.	Mag Nail Found - S1/4 Cor. Sec36,T2N,R12W	Type II - Alum. IDOT Disk - Flush



TYPICAL SHOULDER DETAIL

MODEL: Gennote (Sheet)
FILE NAME: c:\pwworking\harsha.polina@illinois.gov\1156316\174E26-shlt-gennote.dgn

USER NAME = harsha.polina	DESIGNED -	REVISED -
	DRAWN -	REVISED -
	CHECKED -	REVISED -
PLOT DATE = 3/17/2026	DATE -	REVISED -

**STATE OF ILLINOIS
DEPARTMENT OF TRANSPORTATION**

INDEX OF SHEETS, STANDARDS, & GENERAL NOTES

SCALE: SHEET 2 OF 3 SHEETS STA. TO STA.

F.A.P. RTE.	SECTION	COUNTY	TOTAL SHEETS	SHEET NO.
332	(12Z,12.13)SR	WABASH	3	2
CONTRACT NO. 74E26				
ILLINOIS FED. AID PROJECT				

CODE NO.	ITEM	UNIT	TOTAL QUANTITY	CONSTR. CODE	
				100% STATE	
				ROADWAY	
				0006	
				RURAL	
48101200	AGGREGATE SHOULDERS, TYPE B	TON	3639		3639
67100100	MOBILIZATION	L SUM	1		1
70100460	TRAFFIC CONTROL AND PROTECTION, STANDARD 701306	L SUM	1		1
70107025	CHANGEABLE MESSAGE SIGN	CAL DA	28		28
Z0049799	PROTECTING OR RESETTING SURVEY MARKERS	EACH	2		2

MODEL: SOQ (Sheet)
FILE NAME: c:\pw\work\pwrtd\illinois.gov\jared.blomeer@illinois.gov\1156316\074E26-sh-SOQ.dgn

REV - MS

USER NAME = jared.blomeer	DESIGNED -	REVISED -	STATE OF ILLINOIS DEPARTMENT OF TRANSPORTATION	SUMMARY OF QUANTITIES		F.A.P. RTE.	SECTION	COUNTY	TOTAL SHEETS	SHEET NO.
	DRAWN -	REVISED -				332	(12Z,12,13)SR	WABASH	3	3
	CHECKED -	REVISED -		SCALE: SHEET 3 OF 3 SHEETS STA. TO STA.		CONTRACT NO. 74E26				
PLOT DATE = 3/10/2026	DATE -	REVISED -		ILLINOIS FED. AID PROJECT						