

STATE OF ILLINOIS
DEPARTMENT OF TRANSPORTATION

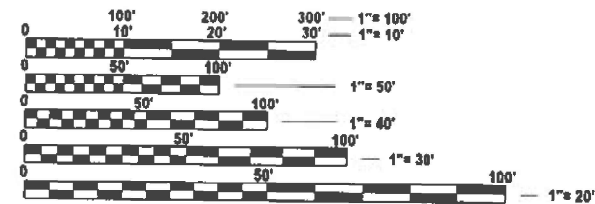
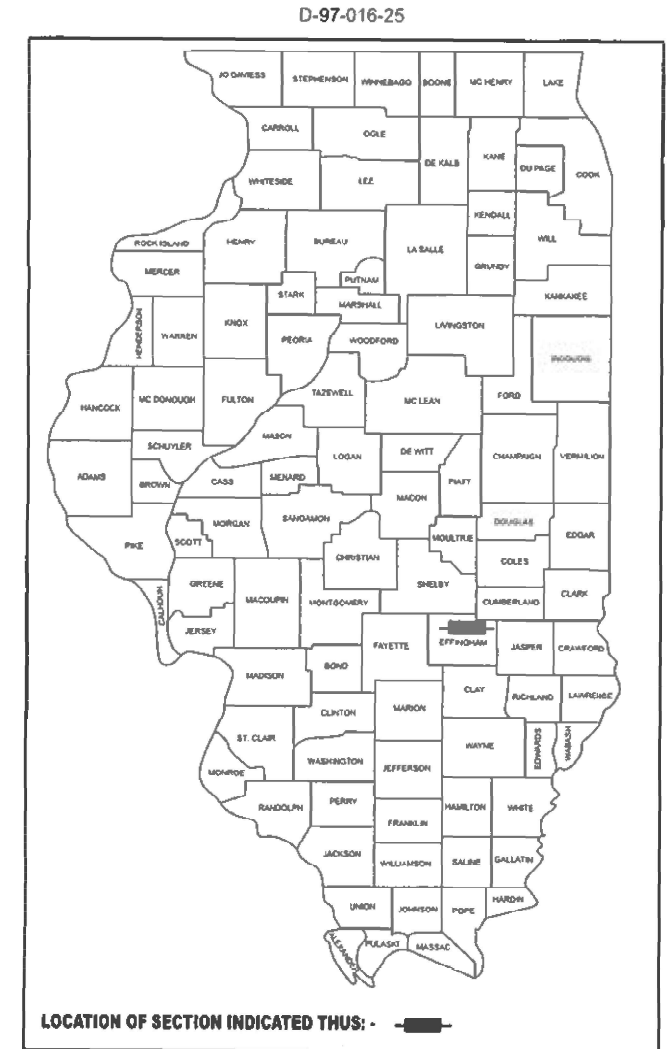
| F.A.U. RTE. | SECTION | COUNTY | TOTAL SHEETS | SHEET NO. |
|-------------|-------------------|-----------|--------------------|-----------|
| 8357 | D7 FENCING 2026-2 | EFFINGHAM | 5 | 1 |
| | | ILLINOIS | CONTRACT NO. 74D51 | |

FOR INDEX OF SHEETS, SEE SHEET NO. 2

PROPOSED
HIGHWAY PLANS

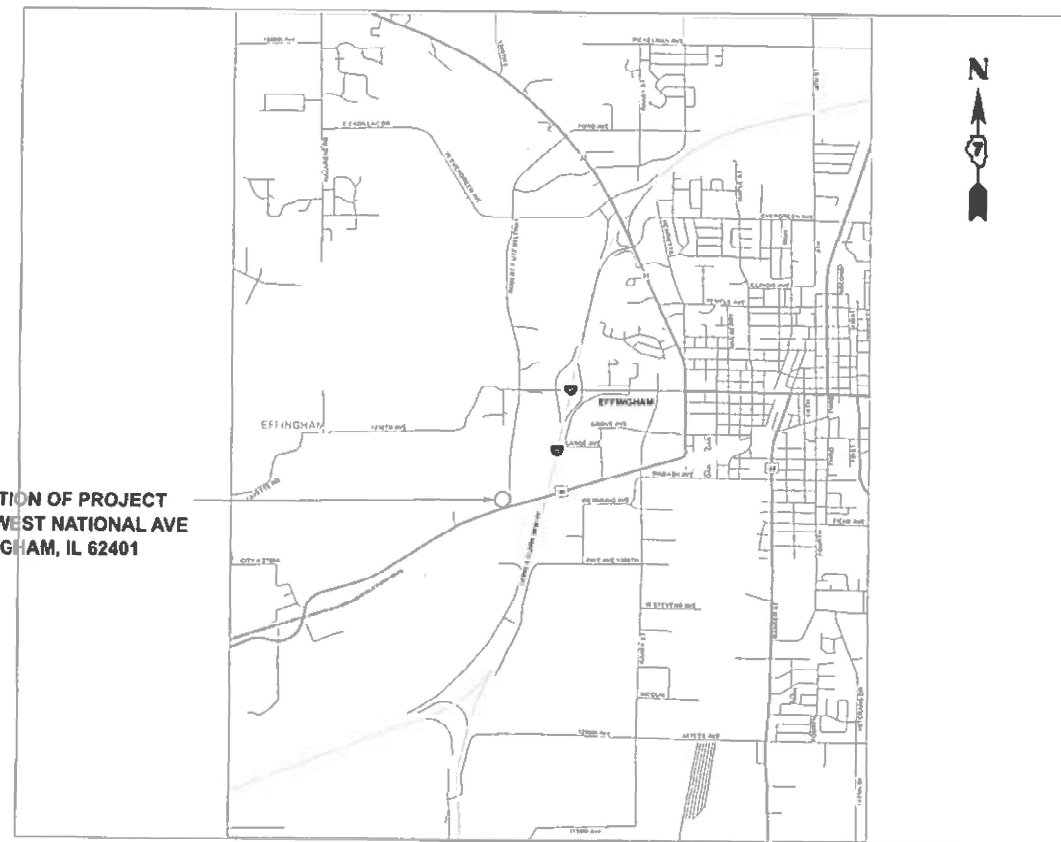
FAU ROUTE 8357 (US 40)
SECTION D7 FENCING 2026-2
FENCE REPLACEMENT
EFFINGHAM COUNTY

C-97-041-25



FULL SIZE PLANS HAVE BEEN PREPARED USING STANDARD ENGINEERING SCALES. REDUCED SIZED PLANS WILL NOT CONFORM TO STANDARD SCALES. IN MAKING MEASUREMENTS ON REDUCED PLANS, THE ABOVE SCALES MAY BE USED.

J.U.L.I.E.
JOINT UTILITY LOCATION INFORMATION FOR EXCAVATION
1-800-892-0123
OR 811



GROSS LENGTH = 500 FT. = 0.1 MILE
NET LENGTH = 500 FT. = 0.1 MILE

PROJECT ENGINEER DOUG RUDOLPHI
PROJECT MANAGER ROBERT GREUEL

CONTRACT NO. 74D51

STATE OF ILLINOIS
DEPARTMENT OF TRANSPORTATION

SUBMITTED March 18, 20 26
Teresa C. Price
REGIONAL ENGINEER

May 8 20 26
[Signature]
ENGINEER OF DESIGN AND ENVIRONMENT

May 8 20 26
[Signature]
DIRECTOR OF HIGHWAYS PROJECT IMPLEMENTATION

PRINTED BY THE AUTHORITY
OF THE STATE OF ILLINOIS

INDEX OF SHEETS

| | |
|-----------|--|
| SHEET NO. | DESCRIPTION |
| 1 | COVER SHEET |
| 2 | INDEX OF SHEETS, HIGHWAY STANDARDS AND GENERAL NOTES |
| 3 | SUMMARY OF QUANTITIES |
| 4 | FENCE REMOVAL PLAN |
| 5 | FENCE PLAN |

HIGHWAY STANDARDS

| | |
|-----------|---|
| 000001-09 | STANDARD SYMBOLS, ABBREVIATIONS AND PATTERNS |
| 001006 | DECIMAL OF AN INCH AND OF A FOOT |
| 664001-02 | CHAIN LINK FENCE |
| 701001-02 | OFF-ROAD OPERATIONS, 2L, 2W, MORE THAN 15' AWAY |
| 701901-11 | TRAFFIC CONTROL DEVICES |

GENERAL NOTES

THE EXISTING EQUIPMENT, VEHICLES, AND MATERIALS LOCATED NEAR THE FENCE IN THE YARD WILL BE MOVED AND REPLACED BY STATE FORCES TO ACCOMMODATE THE WORK. THE EXISTING PROPERTY MARKERS WILL BE STAKED BY IDOT BEFORE WORK BEGINS.

MODEL: INDEX OF SHEETS AND GENERAL NOTES (Sheet)
FILE NAME: c:\p\work\wis\chgreuel\fd1098442\0774051-sh-removal.dgn

| | | | | | | | | | | |
|---------------------------|------------|-----------|---|---|--------------------|-------------------|-----------|--------------|-----------|---------|
| USER NAME = robert.greuel | DESIGNED - | REVISED - | STATE OF ILLINOIS DEPARTMENT OF TRANSPORTATION | INDEX OF SHEETS, HIGHWAY STANDARDS AND GENERAL NOTES | F.A.U. RTE. | SECTION | COUNTY | TOTAL SHEETS | SHEET NO. | |
| | DRAWN - | REVISED - | | | 8357 | D7 FENCING 2026-2 | EFFINGHAM | 5 | 2 | |
| | CHECKED - | REVISED - | | | CONTRACT NO. 74D51 | | | | | |
| PLOT DATE = 3/19/2026 | DATE - | REVISED - | | | SCALE: | SHEET 1 | OF 1 | SHEETS | STA. | TO STA. |

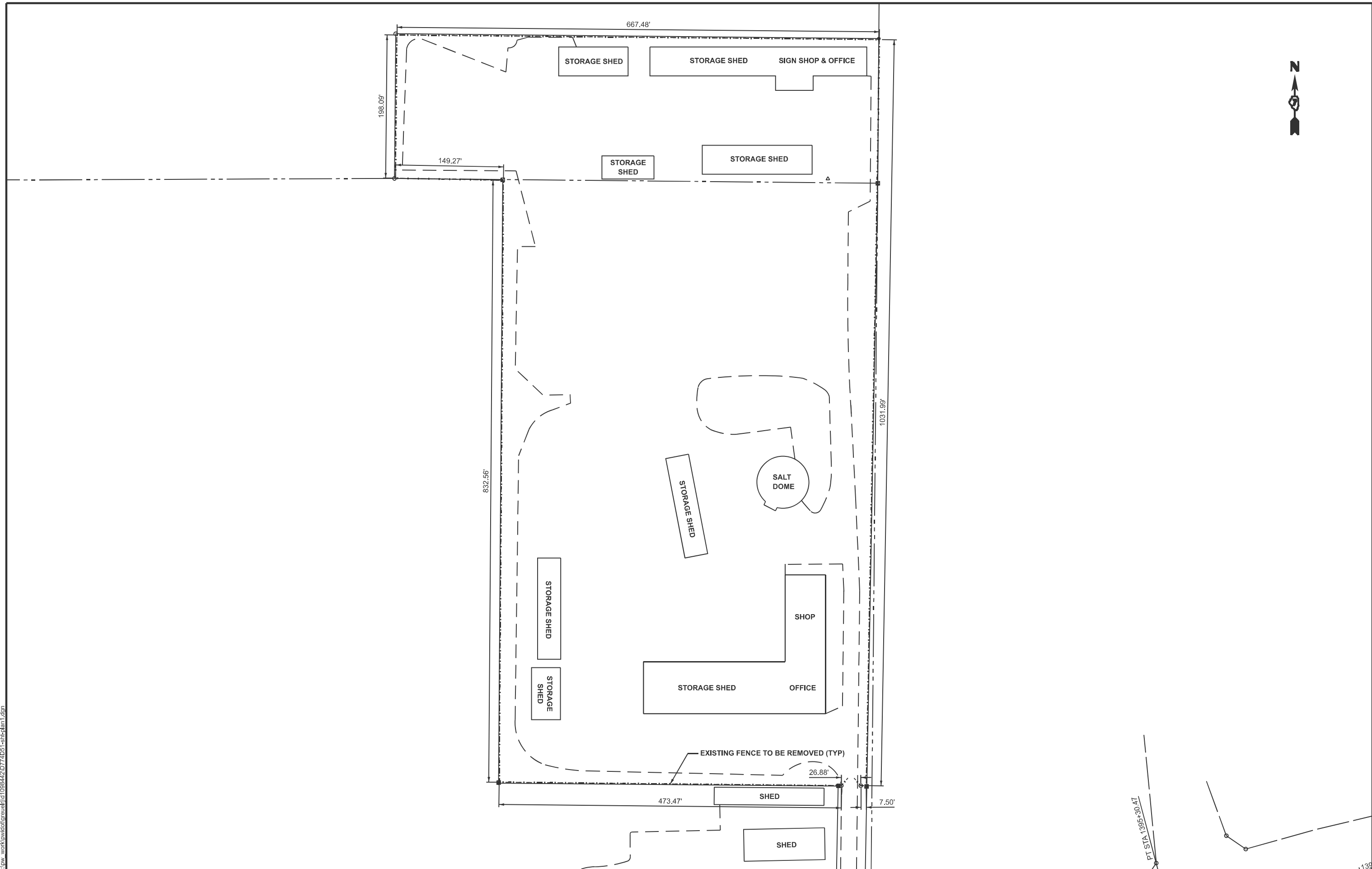
| SUMMARY OF QUANTITIES | | | | CONSTR. CODE | |
|-----------------------|--|--------|----------------|--------------|-------|
| CODE NO. | ITEM | UNIT | TOTAL QUANTITY | SAFETY | |
| | | | | 0021 | URBAN |
| 66400305 | CHAIN LINK FENCE, 6' | FOOT | 3381 | 3381 | |
| * 66900200 | NON-SPECIAL WASTE DISPOSAL | CU YD | 95 | 95 | |
| * 66900530 | SOIL DISPOSAL ANALYSIS | EACH | 1 | 1 | |
| * 66901001 | REGULATED SUBSTANCES PRE-CONSTRUCTION PLAN | L SUM | 1 | 1 | |
| * 66901003 | REGULATED SUBSTANCES FINAL CONSTRUCTION REPORT | L SUM | 1 | 1 | |
| * 66901006 | REGULATED SUBSTANCES MONITORING | CAL DA | 2 | 2 | |
| 67100100 | MOBILIZATION | L SUM | 1 | 1 | |
| X6640300 | CHAIN LINK FENCE REMOVAL | FOOT | 3361 | 3361 | |
| X6640500 | CHAIN LINK GATE ASSEMBLY (SPECIAL) | EACH | 1 | 1 | |

* SPECIALTY ITEM

MODEL: SUMMARY OF QUANTITIES (Sheet)
FILE NAME: c:\pw\work\stat\greuel\rd1088442\0774D51_sht-SOQ.dgn

| | | | | | | | | | | | |
|---------------------------|------------|-----------|---|--|--|---------------------|------------------------------|---------------------|-------------------|----------------|--|
| USER NAME = robert.greuel | DESIGNED - | REVISED - | STATE OF ILLINOIS DEPARTMENT OF TRANSPORTATION | SUMMARY OF QUANTITIES | | F.A.U. RTE. 8357 | SECTION D7 FENCING 2026-2 | COUNTY EFFINGHAM | TOTAL SHEETS 5 | SHEET NO. 3 | |
| | DRAWN - | REVISED - | | SCALE: SHEET 1 OF 1 SHEETS STA. TO STA. | | CONTRACT NO. 74D51 | | | | | |
| | CHECKED - | REVISED - | | ILLINOIS FED. AID PROJECT | | | | | | | |
| PLOT DATE = 3/3/2026 | DATE - | REVISED - | | | | | | | | | |

MODEL: PLAN REMOVAL (Sheet)
 FILE NAME: c:\pwworking\robert.greuel\fid1098442\0774D51-sh1-dan1.dgn



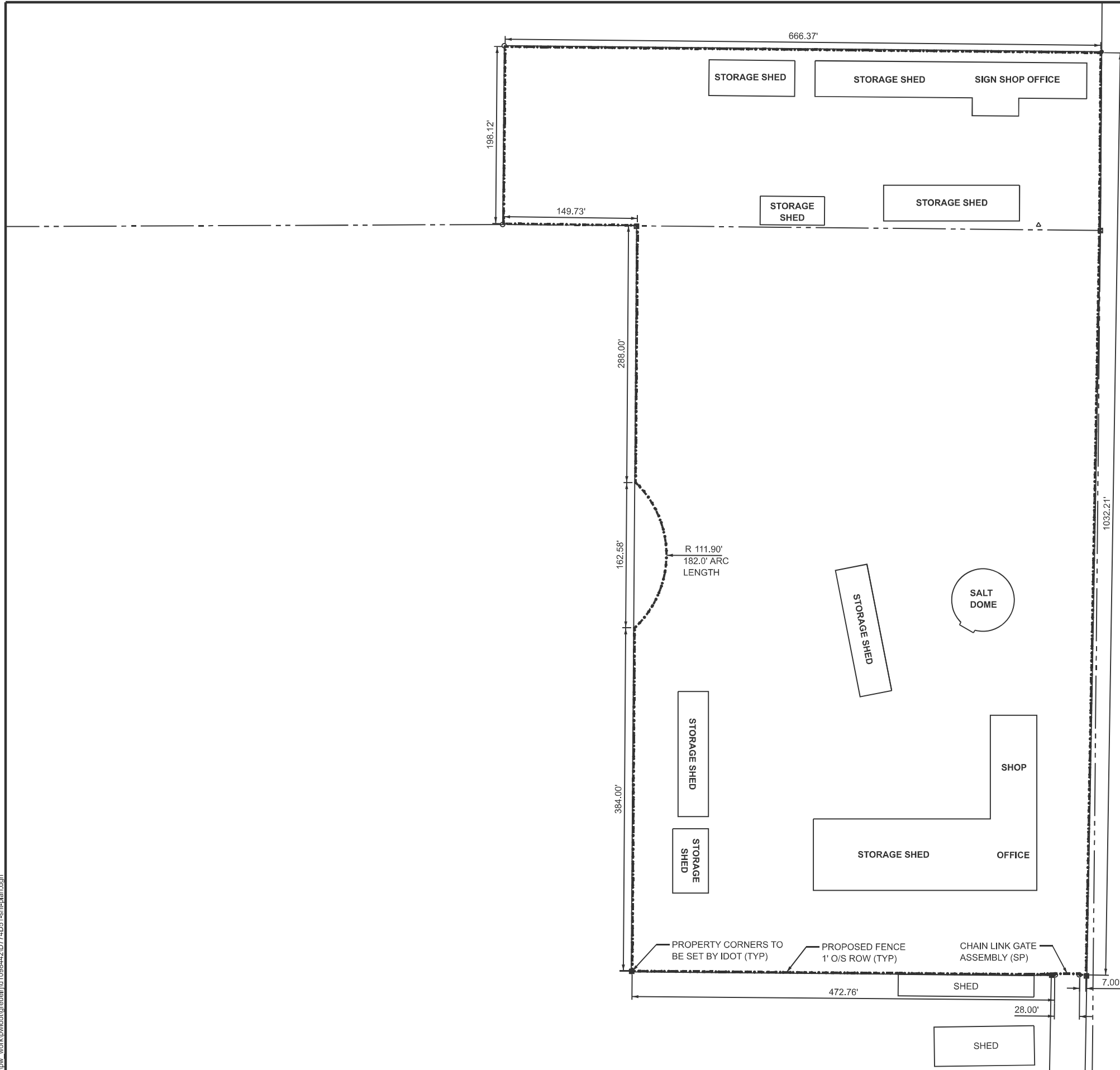
| | | |
|---------------------------|------------|-----------|
| USER NAME = robert.greuel | DESIGNED - | REVISED - |
| | DRAWN - | REVISED - |
| | CHECKED - | REVISED - |
| PLOT DATE = 3/17/2026 | DATE - | REVISED - |

**STATE OF ILLINOIS
 DEPARTMENT OF TRANSPORTATION**

FENCE REMOVAL PLAN

SCALE: SHEET 1 OF 2 SHEETS STA. TO STA.

| F.A.U. RTE. | SECTION | COUNTY | TOTAL SHEETS | SHEET NO. |
|---------------------------|-------------------|-----------|--------------|-----------|
| 8357 | D7 FENCING 2026-2 | EFFINGHAM | 5 | 4 |
| CONTRACT NO. 74D51 | | | | |
| ILLINOIS FED. AID PROJECT | | | | |



MODEL: Plan (Sheet)
 FILE NAME: c:\pwwork\robertgreuel\fid1098442\0774D51-sht-dan.dgn

| | | |
|---------------------------|------------|-----------|
| USER NAME = robert.greuel | DESIGNED - | REVISED - |
| | DRAWN - | REVISED - |
| | CHECKED - | REVISED - |
| PLOT DATE = 3/17/2026 | DATE - | REVISED - |

**STATE OF ILLINOIS
DEPARTMENT OF TRANSPORTATION**

FENCE PLAN

SCALE: SHEET 1 OF 2 SHEETS STA. TO STA.

PT STA 1395+30.47

| F.A.U. RTE. | SECTION | COUNTY | TOTAL SHEETS | SHEET NO. |
|---------------------------|-------------------|-----------|--------------|-----------|
| 8357 | D7 FENCING 2026-2 | EFFINGHAM | 5 | 5 |
| CONTRACT NO. 74D51 | | | | |
| ILLINOIS FED. AID PROJECT | | | | |