

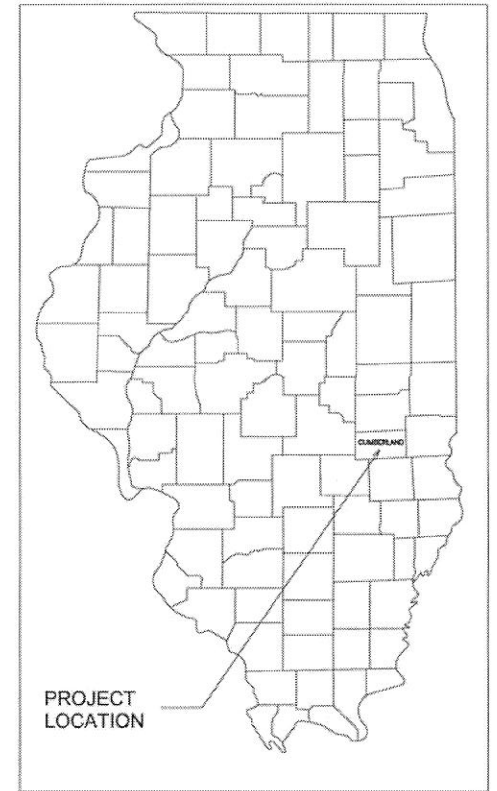
06-12-2026 LETTING ITEM 148

STATE OF ILLINOIS
DEPARTMENT OF TRANSPORTATION
DIVISION OF HIGHWAYS

PLANS FOR PROPOSED
SURFACE TRANSPORTATION PROGRAM

SECTION 20-00083-00-FP
CUMBERLAND COUNTY
PROJECT 3B9T(264)
JOB NO. C-97-002-22
FAS 699

ROUTE	SECTION	COUNTY	TOTAL SHEETS	SHEET NO.
FAS 699	20-00083-00-FP	CUMBERLAND	7	1
CONTRACT 95A06		ILLINOIS	PROJECT 3B9T(264)	

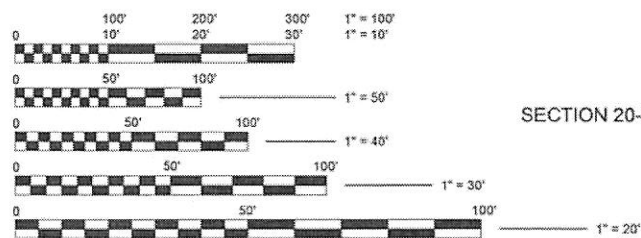


INDEX OF SHEETS

SHEET	ITEM
1	COVER SHEET
2	SUMMARY OF QUANTITIES AND GENERAL NOTES
3	ROADWAY TYPICAL SECTIONS
4	SCHEDULES OF QUANTITIES
5	SIDE ROAD AND ENTRANCE DETAILS
6	BUTT JOINT DETAIL
7	HORIZONTAL ALIGNMENT

HIGHWAY STANDARDS

STANDARD 000001-09	STANDARD SYMBOLS, ABBREVIATIONS, AND PATTERNS
STANDARD 701001-02	OFF-RD OPERATIONS, 2L, 2W, MORE THAN 15' AWAY
STANDARD 701005-05	OFF-RD OPERATIONS, 2L, 2W, 15' TO 24" FROM PAVEMENT EDGE
STANDARD 701011-04	OFF-RD MOVING OPERATIONS 2L, 2W, DAY ONLY
STANDARD 701201-05	LANE CLOSURE, 2L, 2W, DAY ONLY, FOR SPEEDS ≥ 45 MPH
STANDARD 701301-04	LANE CLOSURE, 2L, 2W, SHORT TIME OPERATIONS
STANDARD 701306-04	LANE CLOSURE, 2L, 2W, SLOW MOVING OPERATIONS DAY ONLY, FOR SPEEDS ≥ 45 MPH
STANDARD 701311-03	LANE CLOSURE 2L, 2W MOVING OPERATIONS - DAY ONLY
STANDARD 701901-11	TRAFFIC CONTROL DEVICES
STANDARD BLR 21-9	TYPICAL APPLICATION OF TRAFFIC CONTROL DEVICES FOR CONSTRUCTION ON RURAL LOCAL HIGHWAYS
STANDARD BLR 22-7	TYPICAL APPLICATION OF TRAFFIC CONTROL DEVICES FOR CONSTRUCTION ON RURAL HIGHWAYS (TWO-LANE TWO WAY RURAL TRAFFIC) (ROAD CLOSED TO THRU TRAFFIC)
STANDARD BLR 24-2	MAILBOX TURNOUTS FOR LOCAL ROADS



FULL SIZE PLANS HAVE BEEN PREPARED USING STANDARD ENGINEERING SCALES. REDUCED SIZED PLANS WILL NOT CONFORM TO STANDARD SCALES. IN MAKING MEASUREMENTS ON REDUCED PLANS, THE ABOVE SCALES MAY BE USED

J.U.L.I.E.
JOINT UTILITY LOCATING INFORMATION FOR EXCAVATORS
1-800-892-0123 OR 811
WEBSITE: <https://www.illinois1call.com/>

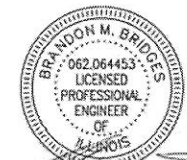
CONTRACT 95A06
FUNCTIONAL CLASSIFICATION - MAJOR COLLECTOR
ADT = 2050
DESIGN SPEED = 50 MPH



SECTION 20-00083-00-FP BEGINS STA. 26+95.00

SECTION 20-00083-00-FP ENDS STA. 184+78.00

GROSS LENGTH = NET LENGTH SECTION 20-00083-00-FP = 15,783.00 Ft. = 2.989 Mi.



MAR 5, 2026

LICENSE EXPIRES 11/30/2027

CHARLESTON ENGINEERING, INC.
CONSULTING ENGINEERS - LAND SURVEYORS
105 NORTH KITCHELL AVENUE
P.O. BOX 397
OLNEY, ILLINOIS 62450
(618) 392-0735
ILLINOIS DEPARTMENT OF PROFESSIONAL REGULATION REGISTRATION #184.003513

APPROVED 3/5/2026
Brandon M. Bridges
CUMBERLAND COUNTY ENGINEER

STATE OF ILLINOIS
DEPARTMENT OF TRANSPORTATION

PASSED 03/12/26
Brandon M. Bridges
DISTRICT SEVEN ENGINEER OF
LOCAL ROADS AND STREETS

Releasing For
Bid Based on
Limited Review
03/12/26
Andrew C. Prunzio
REGION FOUR ENGINEER

GENERAL NOTES

THE CONTRACTOR SHALL CONTACT JULIE (1-800-892-0123) BEFORE COMMENCING WORK. THE CONTRACTOR IS RESPONSIBLE FOR MAKING HIS OWN DETERMINATION AS TO THE TYPE AND LOCATION OF UNDERGROUND AND OTHER UTILITIES AS MAY BE NECESSARY TO AVOID DAMAGE THERETO. THE CONTRACTOR SHALL BE RESPONSIBLE FOR LOCATING ALL UNDERGROUND UTILITIES AND COORDINATION WITH UTILITY COMPANIES.

THE CONTRACTOR SHALL COORDINATE ALL CONSTRUCTION ACTIVITIES WITH UTILITY COMPANIES AND THE CUMBERLAND COUNTY HIGHWAY DEPARTMENT. CARE SHALL BE TAKEN SUCH THAT EXISTING CULVERTS ARE NOT DAMAGED DURING PULVERIZATION AND BASE PROCESSING. A GAP IN THE PROCESSING MAY BE REQUIRED AT LOCATIONS WHERE CULVERTS HAVE LIMITED COVER BUT THE DEPTH OF COVER SHALL NOT BE REDUCED.

THE FOLLOWING RATES HAVE BEEN USED TO CALCULATE PLAN QUANTITIES:
 RATE OF CEMENT APPLICATION 7% BY WEIGHT
 AGGREGATE SURFACE COURSE, TY-B 2.0 TONS/CU YD
 AGGREGATE WEDGE SHOULDER, TYPE-B 2.0 TONS/CU YD

SCHEDULE OF KNOWN UTILITIES

DESIGN STAGE JULIE NO. A260221057, A260221060 AND A260221062 (1/22/2026)

UTILITY COMPANY
 AMEREN ILLINOIS
 EJ WATER COOPERATIVE
 FRONTIER COMMUNICATIONS
 METRO COMMUNICATIONS
 VILLAGE OF TOLEDO

TYPE
 ELECTRIC
 WATER LINE
 COMMUNICATIONS
 COMMUNICATIONS

CONTACT NAME
 LESLIE CROWNOVER
 DEAN SWINGLER
 BRIAN VAN GUNDY
 TAYLOR RICH
 CHUCK LAYTON

PHONE NUMBER
 217-535-5791
 217-925-5566
 618-395-6189
 217-728-3608
 217-849-3336

E-MAIL ADDRESS
 lcrownover@ameren.com
 dswingler@ejwatercoop.com
 brian.vangundy@fr.com
 trich@metrocomm.com
 tiedoutilities@mchsi.com

MAILING ADDRESS
 #6 RICHARD MARK WAY, COLLINSVILLE, IL 62234
 108 S. MAIN STREET, DIETERICH, IL 62424
 225 E. CHESTNUT ST, OLNEY, IL 62450
 8 SOUTH WASHINGTON ST, P.O. BOX 555, SULLIVAN, IL 61951

SUMMARY OF QUANTITIES			
CODE NO.	ITEM	UNIT	TOTAL QUANTITY
35200500	CEMENT	100 WT	33,360
40200800	AGGREGATE SURFACE COURSE, TYPE B	TON	104
48102100	AGGREGATE WEDGE SHOULDER, TYPE B	TON	1,920
67100100	MOBILIZATION	L SUM	1
70300100	SHORT TERM PAVEMENT MARKING	FOOT	1,435
70300150	SHORT TERM PAVEMENT MARKING REMOVAL	SQ FT	474
* 78001110	PAINT PAVEMENT MARKING - LINE 4"	FOOT	35,384
LR400903	FULL-DEPTH RECLAMATION, 12.0"	SQ YD	42,090
LR403300	SURFACE PROFILE MILLING	SQ YD	42,090
X1500005	BITUMINOUS SURFACE TREATMENT, A2	SQ YD	45,790
X7010216	TRAFFIC CONTROL AND PROTECTION, (SPECIAL)	L SUM	1
Z0013798	CONSTRUCTION LAYOUT	L SUM	1

* SPECIALTY ITEM

COMMITMENTS

THERE ARE NO COMMITMENTS THAT PERTAIN TO THIS PROJECT.

SUMMARY OF MAINLINE AND ENTRANCES/SIDEROAD			
CODE NUMBER	LR400903	35200500	X1500005
	FULL-DEPTH RECLAMATION, 12.0"	CEMENT	BITUMINOUS SURFACE TREATMENT, A2
LOCATION	42090	100 WT	SQ YD
MAINLINE	42090	33360	45600
SIDERoads	0	0	190
TOTAL #	42090	33360	45790

CHARLESTON ENGINEERING, INC.
 CONSULTING ENGINEERS - LAND SURVEYORS
 105 NORTH MITCHELL AVENUE
 P. O. BOX 397
 CLNEY, ILLINOIS 62450
 (618) 392-0738
 ILLINOIS DEPARTMENT OF PROFESSIONAL REGULATION REGISTRATION #184.003313

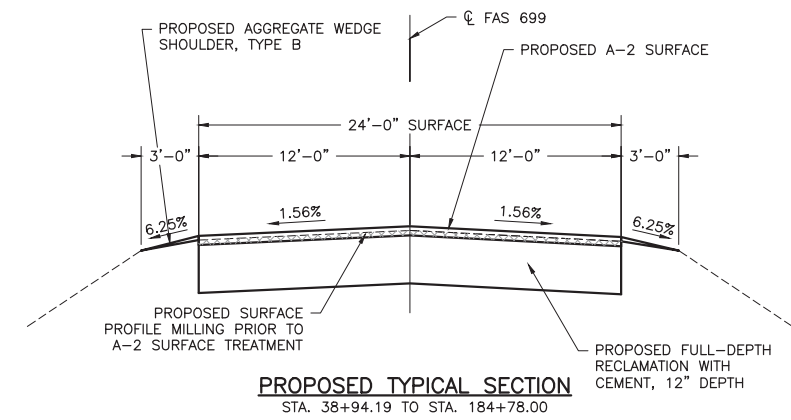
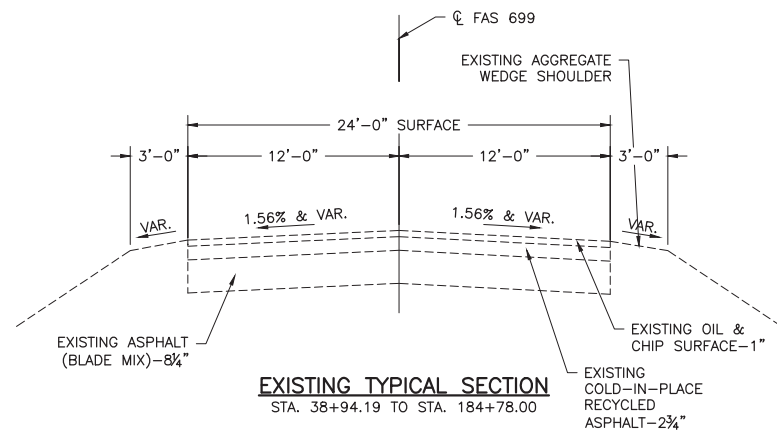
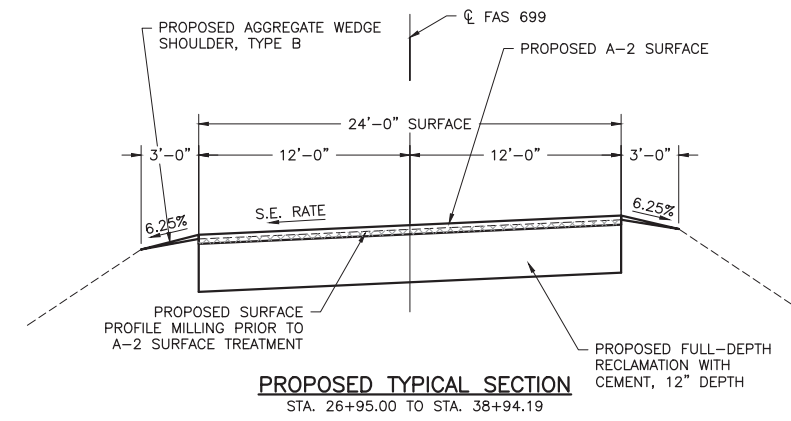
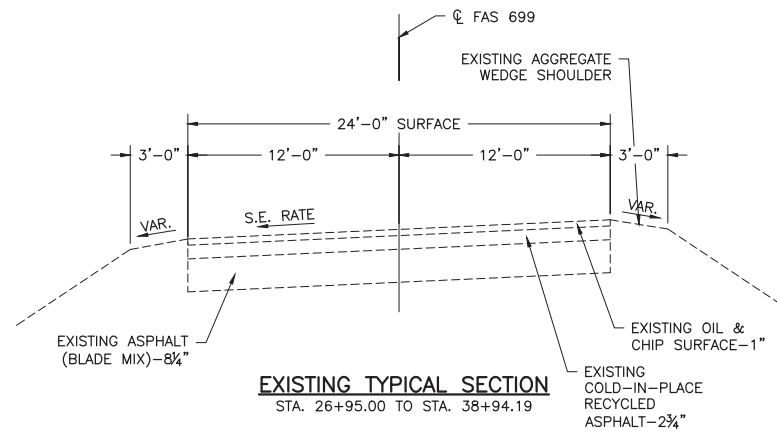
DESIGNED -- BMB
 DRAWN -- BMB
 CHECKED -- BMB
 DATE -- 3-4-2026

REVISED --
 REVISED --
 REVISED --
 REVISED --

STATE OF ILLINOIS
 DEPARTMENT OF TRANSPORTATION

SUMMARY OF QUANTITIES AND
 GENERAL NOTES

ROUTE	SECTION	COUNTY	TOTAL SHEETS	SHEET NO.
FAS 699	20-00083-00-FP	CUMBERLAND	7	2
CONTRACT 95A06		ILLINOIS	PROJECT 3B9T(264)	



CHARLESTON ENGINEERING, INC.
CONSULTING ENGINEERS - LAND SURVEYORS
105 NORTH KITCHELL AVENUE OLNEY, ILLINOIS 62450
P.O. BOX 397 (618) 392-0736
ILLINOIS DEPARTMENT OF PROFESSIONAL REGULATION REGISTRATION #184.003513

DESIGNED - BMB	REVISED -
DRAWN - BMB	REVISED -
CHECKED - BMB	REVISED -
DATE - 3-4-2026	REVISED -

STATE OF ILLINOIS
DEPARTMENT OF TRANSPORTATION

ROADWAY TYPICAL SECTIONS

ROUTE	SECTION	COUNTY	TOTAL SHEETS	SHEET NO.
FAS 699	20-00083-00-FP	CUMBERLAND	7	3
CONTRACT 95A06		ILLINOIS	PROJECT 3B9T(264)	

BITUMINOUS SURFACE TREATMENT				
PAVEMENT STRUCTURE	BITUMINOUS SURFACE TREATMENT, A2			
CODE NUMBER	X1500005			
TYPE OF CONSTRUCTION	BITUMINOUS MATERIAL	BITUMINOUS MATERIAL APPLICATION RATE	AGGREGATE	AGGREGATE APPLICATION RATE
A-2 (COVER COAT)	HFP/CRSP	0.32 GAL/SQ YD	CA-16	25 LB/SQ YD
A-2 (SEAL COAT)	HFP/CRSP	0.4 GAL/SQ YD	CA-16	19 LB/SQ YD

NOTES: 1. THE ENGINEER RESERVES THE RIGHT TO ADJUST THE TARGET APPLICATION RATES AND THE QUANTITIES.
 2. THE AGGREGATE SHALL BE EITHER CRUSHED GRAVEL OR CARBONATE CRUSHED STONE.
 3. THE AGGREGATE SHALL BE CLASS C QUALITY OR BETTER.
 4. SEE SPECIAL PROVISIONS FOR MORE DETAILS.

MAINLINE ROADWAY TREATMENT SCHEDULE														
PAVEMENT STRUCTURE		FULL-DEPTH RECLAMATION, 12.0"						SURFACE PROFILE MILLING		A-2 SURFACE		SHOULDER		
CODE NUMBER		LR400903			35200500			LR403300		X1500005		48102100		
STATION TO STATION		PAY LENGTH	PAY WIDTH	FULL-DEPTH RECLAMATION, 12.0"	MAX. LAB DRY SOIL UNIT WEIGHT	PERCENT CEMENT	EQUIVALENT CEMENT APPLICATION RATE	CEMENT	SURFACE PROFILE MILLING	A-2 SURFACE PAY LENGTH	A-2 SURFACE PAY WIDTH	BITUMINOUS SURFACE TREATMENT, A2	ANTICIPATED SHOULDER DEPTH AT EP	AGGREGATE WEDGE SHOULDER, TYPE B
		FOOT	FOOT	SQ YD	PCF	% MASS	LB/SQ YD	HWT	SQ YD	FOOT	FOOT	SQ YD	INCH	TON
26+95 to 184+78		15,783	24	42,090	125.8	7.0%	79.3	33,360	42,090	15,783	26	45,600	4	1,920
TOTALS =				42,090				33,360	42,090			45,600		1,920

SHORT TERM PAVEMENT MARKING SCHEDULE					
CODE NUMBER		70300100		70300150	
START STATION	END STATION	LENGTH	SHORT TERM PAVEMENT MARKING	REMOVAL WIDTH	SHORT TERM PAVEMENT MARKING REMOVAL
26+95	184+78	15783	FOOT	FOOT	SQ FT
			1435	0.33	474
TOTAL =			1435		474

NOTE: SHORT TERM CENTER LINE MARKINGS SHALL CONSIST OF AN ABBREVIATED PATTERN OF SINGLE STRIPES 4 FOOT IN LENGTH AND A MINIMUM OF 4 INCHES WIDE AT A MAXIMUM SPACING OF 40 FOOT BETWEEN STRIPES.

SCHEDULE OF SUPERELEVATION CORRECTION								
PC STA.	PT STA.	RUNOFF (L1)	RUNOUT (TR)	TRANSITION				SUPERELEVATION RATE
				START	FULL SE	END FULL SE	END	
STA.	STA.	FT	FT	STA.	STA.	STA.	STA.	
25+22.75	30+99.20	33	88	24+32.00	25+53.00	30+68.95	31+68.33	4%
32+37.45	38+03.44	33	88	31+68.33	32+67.70	37+73.19	38+94.19	4%

NOTE: S. E. BETWEEN CURVES SHALL BE ATTAINED BY A CONTINUOUSLY ROTATING PLANE ABOUT THE CENTERLINE AXIS.

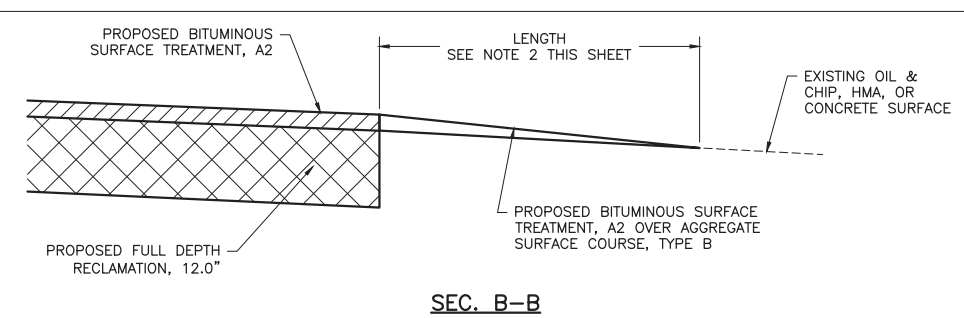
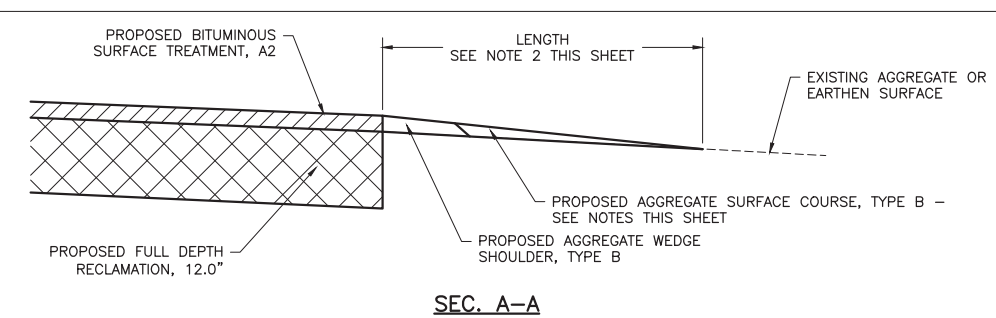
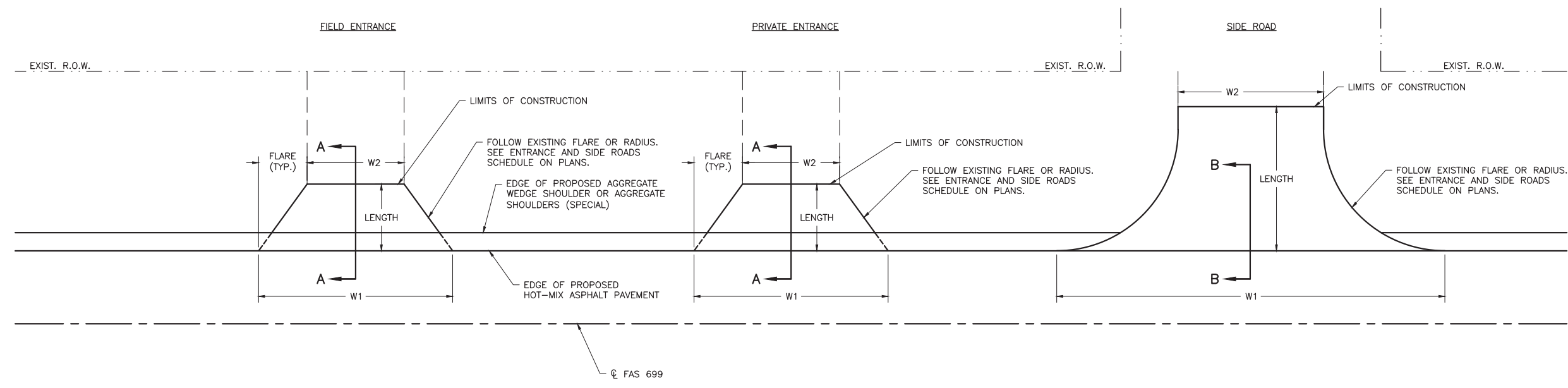
MAILBOX TURNOUT SCHEDULE	
STATION	LOCATION
119+39	RT
132+87	RT

NOTE: MAILBOX TURNOUTS SHALL BE CONSTRUCTED WITH 48102100 - AGGREGATE WEDGE SHOULDER AT 3 FOOT WIDTH. QUANTITIES FOR MAILBOX TURNOUTS ARE INCLUDED IN QUANTITY FOR ITEM 48102100 - AGGREGATE WEDGE SHOULDER.

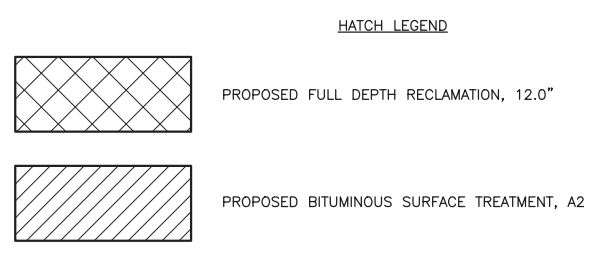
ENTRANCES AND SIDE ROADS SCHEDULE										
PAVEMENT STRUCTURE					SURFACE COURSE					
CODE NUMBER					40200800		X1500005			
STATION	LOCATION	TYPE	EXISTING SURFACE MATERIAL	PROPOSED SURFACE MATERIAL	AGGREGATE SURFACE COURSE, TYPE B	BITUMINOUS SURFACE TREATMENT, A2	W1	W2	LENGTH	FLARE / RADIUS
					TON	SQ YD	FOOT	FOOT	FOOT	FOOT
40+36	LT	FE	GRASS	AGG.	4	-	42	22	8	10' FLARE
58+38	RT	FE	GRASS	AGG.	5	-	50	34	8	8' FLARE
65+00	LT	PE	AGG.	AGG.	4	-	44	28	8	8' FLARE
66+78	RT	FE	GRASS	AGG.	4	-	48	28	8	10' FLARE
79+68	RT	FE	AGG.	AGG.	3	-	40	20	8	10' FLARE
106+20	RT	SIDE ROAD	OIL & CHIP	AGG.	21	95	60	16	32	30 / 30
106+24	LT	SIDE ROAD	OIL & CHIP	AGG.	21	95	62	16	25	30 / 50
119+46	LT	PE	AGG.	AGG.	6	-	70	38	8	16' FLARE
119+58	RT	FE	GRASS	AGG.	4	-	46	30	8	8' FLARE
119+95	LT	FE	GRASS	AGG.	6	-	68	48	8	10' FLARE
130+40	LT	PE	AGG.	AGG.	3	-	34	26	8	4' FLARE
132+66	RT	PE	AGG.	AGG.	4	-	46	30	8	8' FLARE
132+75	LT	PE	AGG.	AGG.	6	-	46	26	8	10' FLARE
139+48	LT	FE	GRASS	AGG.	3	-	30	22	8	4' FLARE
155+96	LT	FE	GRASS	AGG.	2	-	22	14	8	4' FLARE
159+26	RT	FE	AGG.	AGG.	5	-	54	38	8	8' FLARE
177+60	LT	FE	AGG.	AGG.	3	-	36	20	8	8' FLARE
TOTALS =					104	190				

EXISTING A.R. CULVERTS						
LOCATION	STATION	TYPE	SIZE	DISTANCE FROM EP TO OUTSIDE FACE OF HEADWALL (LT)	DISTANCE FROM EP TO OUTSIDE FACE OF HEADWALL (RT)	END TREATMENT
				FT	FT	
AR	26+77	R.C. BOX	2.5' RISE X 3' SPAN	2	8	PCC HEADWALL - US & DS
AR	40+00	R.C.C.P	2 - 24" Ø	9	9	PCC HEADWALL - US & DS
AR	53+33	R.C.C.P	2 - 24" Ø	6	9	PCC HEADWALL - US & DS
AR	105+95	R.C.C.P	48" Ø	9	9	PCC HEADWALL - US & DS
AR	138+48	R.C.C.P	36" Ø	7	10	PCC HEADWALL - US & DS
AR	181+68	R.C.C.P	48" Ø	18	10	PCC HEADWALL - US & DS

PAVEMENT MARKING SCHEDULE					
CODE NUMBER		78001110			
		PAINT PAVEMENT MARKING - LINE 4"			
LOCATION	START STATION	END STATION	EDGE LINE	CENTERLINE	
			WHITE SOLID	SKIP DASH	YELLOW
			FOOT	FOOT	FOOT
SKIP DASH - CENTERLINE					
	26+95	184+78	-		3946
SOLID WHITE EDGELINE					
LT	26+95	105+84	7889		-
LT	106+48	184+78	7830		-
RT	26+95	105+84	7889		-
RT	106+48	184+78	7830		-
SUB TOTAL =					3946
TOTAL =					35384



NOTES
 1. MATCH EXISTING DIMENSIONS OF ALL FIELD ENTRANCES, PRIVATE ENTRANCES, AND SIDE ROADS. WIDTHS AND RADII SHOWN ON ENTRANCES AND SIDE ROADS SCHEDULE ON THE PLANS IS SHOWN AS A BASIS FOR ESTIMATING QUANTITIES.
 2. FINAL LENGTH = 8 FEET UNLESS OTHERWISE NOTED ON PLANS. SEE ENTRANCE AND SIDE ROADS SCHEDULE ON THE PLANS FOR FINAL DISTANCES AND DIMENSIONS.



CHARLESTON ENGINEERING, INC.
 CONSULTING ENGINEERS - LAND SURVEYORS
 105 NORTH KITCHELL AVENUE OLNEY, ILLINOIS 62450
 P.O. BOX 397 (618) 392-0736
 ILLINOIS DEPARTMENT OF PROFESSIONAL REGULATION REGISTRATION #184.003513

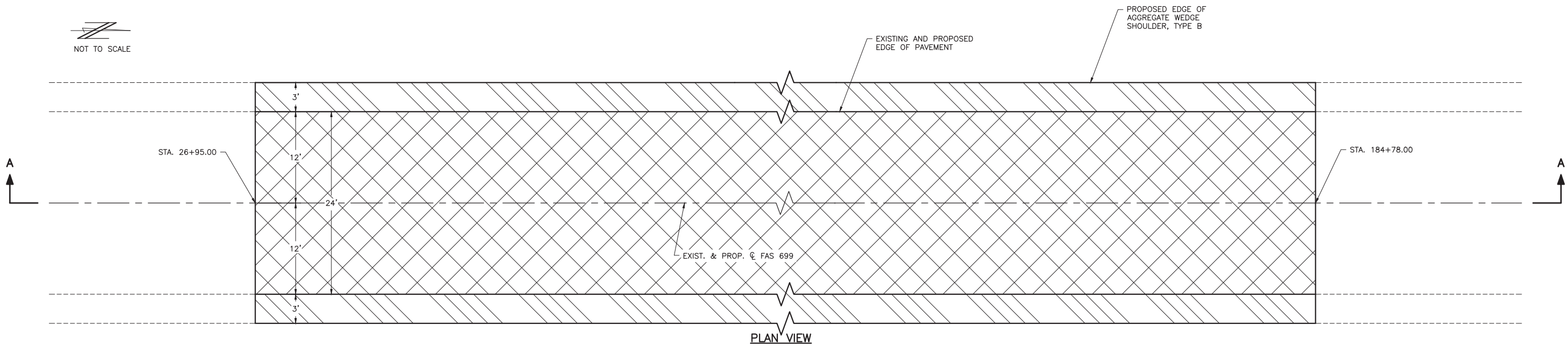
DESIGNED - BMB	REVISED -
DRAWN - BMB	REVISED -
CHECKED - BMB	REVISED -
DATE - 3-4-2026	REVISED -

STATE OF ILLINOIS
 DEPARTMENT OF TRANSPORTATION

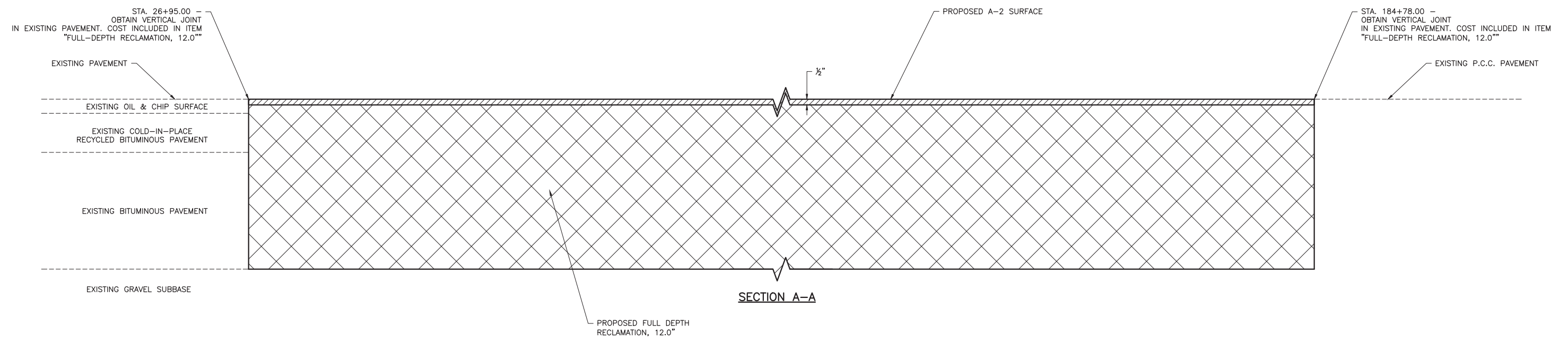
SIDE ROAD AND ENTRANCE DETAILS

ROUTE	SECTION	COUNTY	TOTAL SHEETS	SHEET NO.
FAS 699	20-00083-00-FP	CUMBERLAND	7	5
CONTRACT 95A06		ILLINOIS	PROJECT 3B9T(264)	

NOT TO SCALE



PLAN VIEW



SECTION A-A

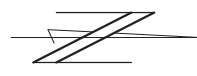
HATCH LEGEND

	PROPOSED FULL DEPTH RECLAMATION, 12.0"
	PROPOSED SURFACE PROFILE MILLING
	PROPOSED AGGREGATE WEDGE SHOULDER, TYPE B

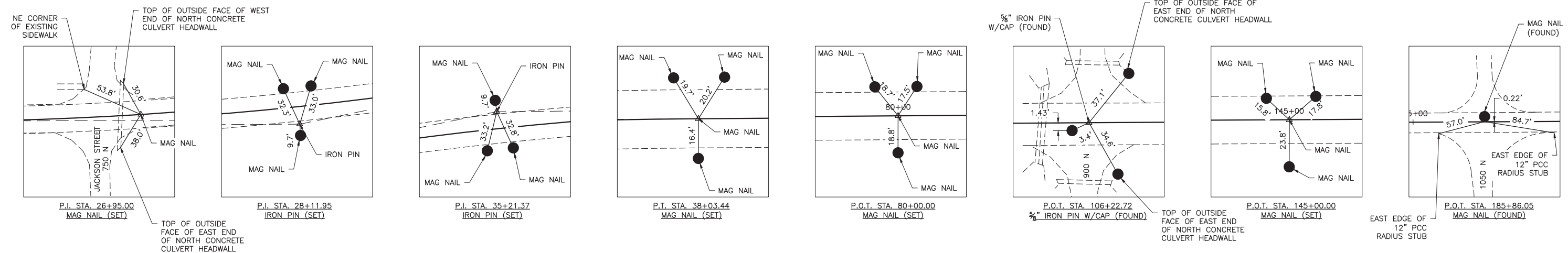
TERMINI TRANSITION DETAIL
STA. 26+95.00 AND STA. 184+78.00

NOTE: SEE TYPICAL SECTION SHEET IN THE PLANS FOR DIMENSIONS NOT SHOWN ON THIS SHEET.

CHARLESTON ENGINEERING, INC. CONSULTING ENGINEERS - LAND SURVEYORS 105 NORTH KITCHELL AVENUE P.O. BOX 397 ILLINOIS DEPARTMENT OF PROFESSIONAL REGULATION REGISTRATION #184.003513	DESIGNED - BMB	REVISED -	STATE OF ILLINOIS DEPARTMENT OF TRANSPORTATION	TERMINI TRANSITION DETAIL	ROUTE	SECTION	COUNTY	TOTAL SHEETS	SHEET NO.
	DRAWN - BMB	REVISED -			FAS 699	20-00083-00-FP	CUMBERLAND	7	6
	CHECKED - BMB	REVISED -			CONTRACT 95A06		ILLINOIS	PROJECT 3B9T(264)	
	DATE - 3-4-2026	REVISED -							



SCALE:
1" = 300'



NOTE: TIE DRAWINGS NOT TO SCALE

CHARLESTON ENGINEERING, INC. CONSULTING ENGINEERS - LAND SURVEYORS 105 NORTH KITCHELL AVENUE OLNEY, ILLINOIS 62450 P.O. BOX 397 (618) 392-0736 ILLINOIS DEPARTMENT OF PROFESSIONAL REGULATION REGISTRATION #184.003513	DESIGNED - BMB	REVISED -	STATE OF ILLINOIS DEPARTMENT OF TRANSPORTATION	HORIZONTAL ALIGNMENT	ROUTE	SECTION	COUNTY	TOTAL SHEETS	SHEET NO.	
	DRAWN - BMB	REVISED -			FAS 699	20-00083-00-FP	CUMBERLAND	7	7	
	CHECKED - BMB	REVISED -			CONTRACT 95A06			ILLINOIS	PROJECT 39BT(264)	
	DATE - 3-4-2026	REVISED -								