

FOR INDEX OF SHEETS, SEE SHEET NO. 2

STATE OF ILLINOIS
DEPARTMENT OF TRANSPORTATION

PROPOSED
HIGHWAY PLANS

FAP ROUTE 42 (IL-127)
SECTION (107,108)RS-4
PROJECT STP-815C(154)
MICROSURFACING 1 PASS
BOND COUNTY

F.A.P. RTE.	SECTION	COUNTY	TOTAL SHEETS	SHEET NO.
42	(107,108)RS-4	BOND	7	1
		ILLINOIS	CONTRACT NO. 76U54	

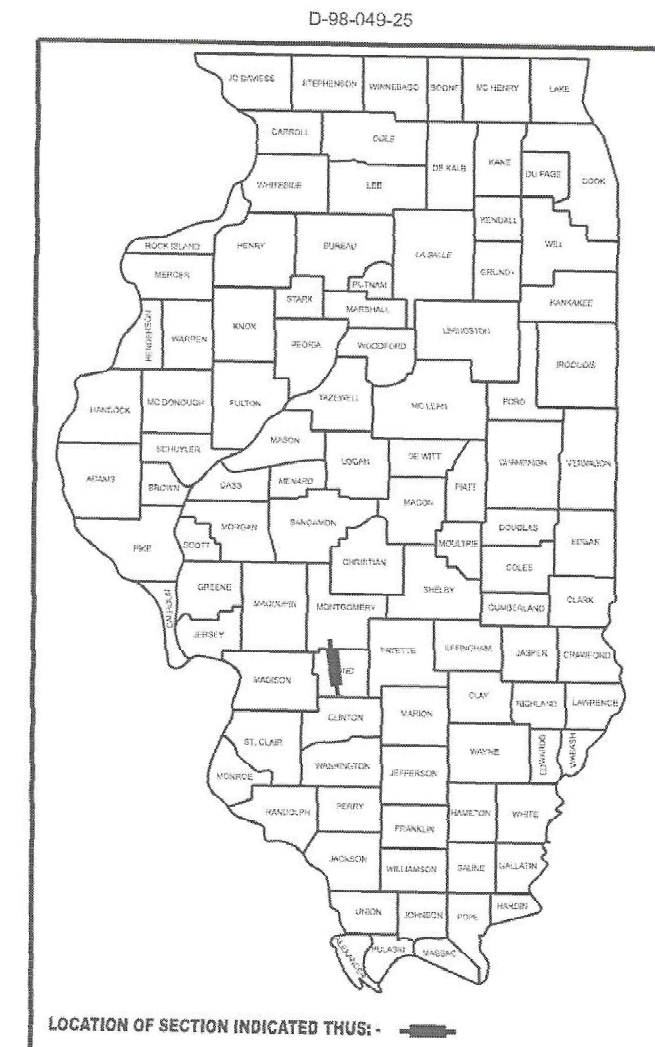
TRAFFIC DATA

0.1 MI N OF IL 140 TO SHADY GROVE AVE

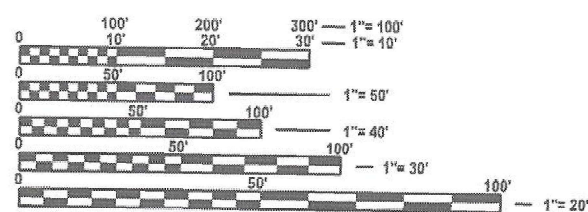
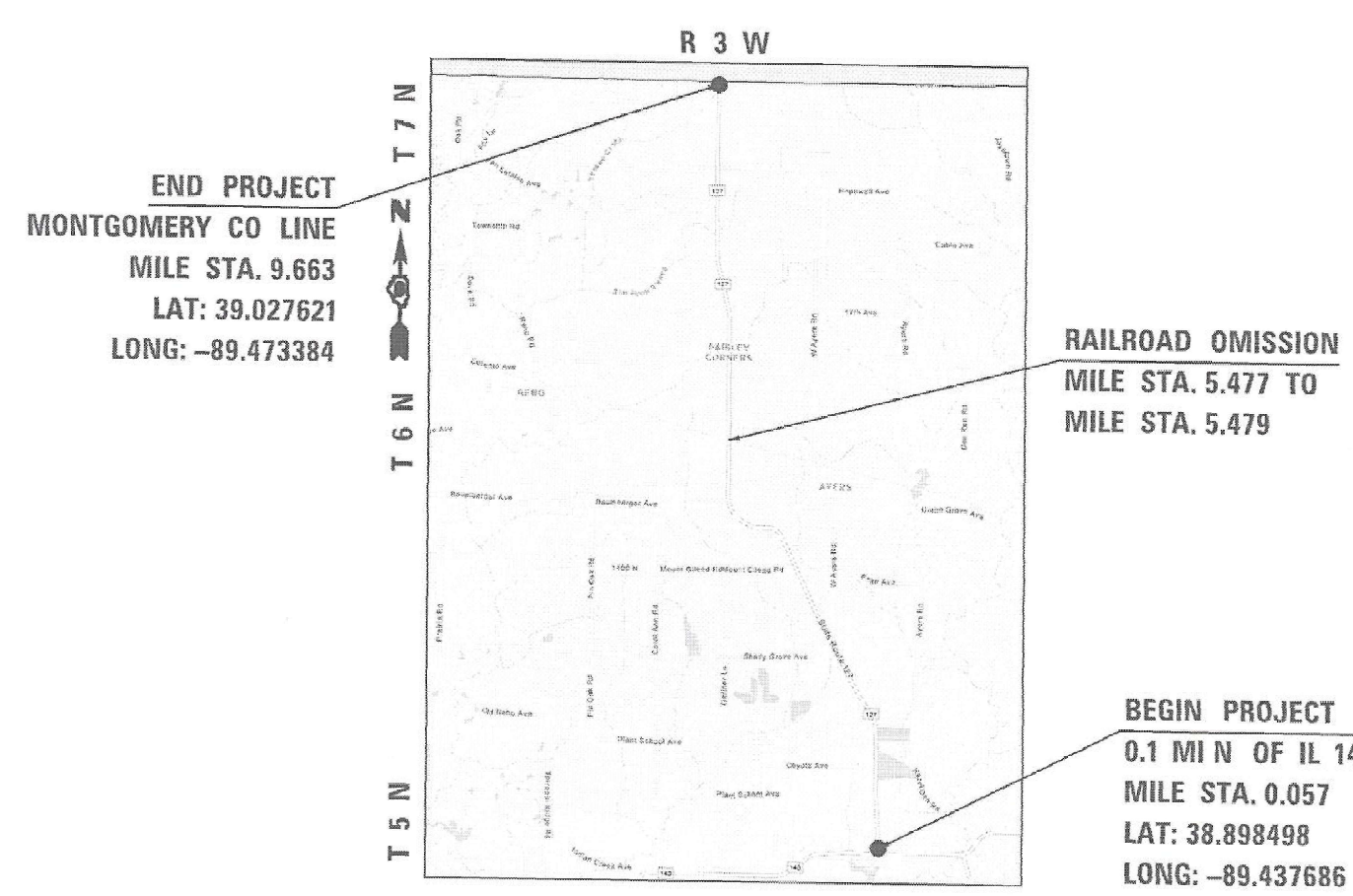
2023 ADT = 2700 (ACTUAL)
2027 ADT = 2800 (ESTIMATED)
2047 ADT = 2400 (ESTIMATED)
S.U. = 5.6% M.U. = 7.4%

SHADY GROVE AVE TO MONTGOMERY CO LINE

2023 ADT = 2300 (ACTUAL)
2027 ADT = 2400 (ESTIMATED)
2047 ADT = 2900 (ESTIMATED)
S.U. = 5.2% M.U. = 8.3%



C-98-115-25



FULL SIZE PLANS HAVE BEEN PREPARED USING STANDARD ENGINEERING SCALES. REDUCED SIZED PLANS WILL NOT CONFORM TO STANDARD SCALES. IN MAKING MEASUREMENTS ON REDUCED PLANS, THE ABOVE SCALES MAY BE USED.

J.U.L.I.E.
JOINT UTILITY LOCATION INFORMATION FOR EXCAVATION
1-800-892-0123
OR 811

PROJECT ENGINEER: CHERYL KEPLAR
PROJECT MANAGER: BRANDON HUMPHREYS

CONTRACT NO. 76U54

GROSS LENGTH = 50719.68 FT. = 9.606 MILE
NET LENGTH = 50709.12 FT. = 9.604 MILE

FUNCTIONAL CLASSIFICATION
MINOR ARTERIAL

STATE OF ILLINOIS
DEPARTMENT OF TRANSPORTATION

SUBMITTED May 20 2026
[Signature]
REGIONAL ENGINEER

May 8 2026
[Signature]
ENGINEER OF DESIGN AND ENVIRONMENT

May 8 2026
[Signature]
DIRECTOR OF HIGHWAYS PROJECT IMPLEMENTATION

PRINTED BY THE AUTHORITY
OF THE STATE OF ILLINOIS

INDEX OF SHEETS

1	COVER SHEET
2	INDEX OF SHEETS, HIGHWAY STANDARDS, GENERAL NOTES AND COMMITMENTS
3	SUMMARY OF QUANTITIES
4	TYPICAL SECTIONS
5	SCHEDULE OF QUANTITIES
6	SURVEY TIES
7	LOCATION MAP

HIGHWAY STANDARDS

000001-09	STANDARD SYMBOLS, ABBREVIATIONS AND PATTERNS
001006	DECIMAL OF AN INCH AND OF A FOOT
701006-05	OFF-ROAD OPERATIONS, 2L, 2W, 15' TO 24' FROM PAVEMENT EDGE
701011-04	OFF-ROAD MOVING OPERATIONS, 2L, 2W, DAY ONLY
701201-05	LANE CLOSURE, 2L, 2W, DAY ONLY, FOR SPEEDS ≥ 45 MPH
701301-04	LANE CLOSURE, 2L, 2W, SHORT TIME OPERATIONS
701306-04	LANE CLOSURE, 2L, 2W, SLOW MOVING OPERATIONS DAY ONLY, FOR SPEEDS ≥ 45 MPH
701311-03	LANE CLOSURE, 2L, 2W, MOVING OPERATIONS - DAY ONLY
701336-07	LANE CLOSURE, 2L, 2W, WORK AREAS IN SERIES, FOR SPEEDS ≥ 45 MPH
701901-11	TRAFFIC CONTROL DEVICES
780001-05	TYPICAL PAVEMENT MARKINGS
781001-04	TYPICAL APPLICATIONS RAISED REFLECTIVE PAVEMENT MARKERS

GENERAL NOTES

- UTILITIES KNOWN TO HAVE FACILITIES WITHIN THE PROJECT AREA:
 AMEREN ILLINOIS
 AT&T ILLINOIS
 BOND MADISON WATER COMPANY
 BUCKEYE PARTNERS L.P.-WOOD RIVER PIPELINE
 VILLAGE OF DONNELSON
 FRONTIER COMMUNICATIONS
 MARATHON PIPE LINE LLC
 NEWWAVE COMMUNICATIONS
 SOUTHWESTERN ELECTRIC COOPERATIVE, INC.
- NO SURVEY WAS PERFORMED FOR THIS PROJECT AND THE PLANS WERE CREATED USING MICROFILM AND FIELD MEASUREMENTS.
- THE PROPOSED PAVEMENT MARKING SHALL MATCH THE LOCATIONS OF THE EXISTING PAVEMENT MARKING, AS DIRECTED BY THE ENGINEER.
- TWO CHANGEABLE MESSAGE SIGNS SHALL BE REQUIRED FOR THIS PROJECT. THEY SHALL BE PLACED TWO WEEKS PRIOR TO ANY LANE CLOSURE AND SHALL REMAIN UP FOR THE DURATION OF THE PROJECT. THE CHANGEABLE MESSAGE SIGNS SHALL BE PLACED ALONG IL 127 OR AT THE DIRECTION OF THE ENGINEER.
- ONLY SHORT TERM PAVEMENT MARKING REMOVAL FROM THE FINAL SURFACE SHALL BE PAID FOR AS "SHORT TERM PAVEMENT MARKING REMOVAL."
- THE VOID IN THE PAVEMENT WHICH RESULTS FROM THE RAISED REFLECTIVE PAVEMENT MARKER REMOVAL SHALL BE REPAIRED WITH MATERIAL AS DIRECTED BY THE ENGINEER. THE MATERIAL AND WOTK SHALL BE PAID FOR IN ACCORDANCE WITH ARTICLE 783 OF THE STANDARD SPECIFICATIONS.
- THE RESIDENT ENGINEER SHALL VERIFY THE EXISTANCE OF HIGHWAY LIGHTING, INTELLIGENT TRANSPORTATION SYSTEMS (I.T.S.), UTILITIES, AND/OR ELECTRICAL CABLES ASSOCIATED WITH TRAFFIC SIGNALS WITHIN THE PROJECT LIMITS, IF ANY OF THESE EXIST WITHIN THE PROJECT LIMITS, AND IF THESE ITEMS REQUIRE LOCATING, THE CONTRACTOR SHALL BE DIRECTED TO DO SO ACCORDING TO SECTION 803 OF THE STANDARD SPECIFICATIONS. THIS WORK SHALL BE PAID FOR ACCORDING TO ARTICLE 109.04 OF THE STANDARD SPECIFICATIONS.
- ALL TURF AREAS DISTURBED BY THE CONTRACTOR SHALL BE SEEDED WITH THE APPROPRIATE EROSION CONTROL, AS DIRECTED BY THE ENGINEER, AT THE CONTRACTOR'S EXPENSE.

COMMITMENTS

NONE

STATE OF ILLINOIS
DEPARTMENT OF TRANSPORTATION

INDEX OF SHEETS, HIGHWAY STANDARDS,
GENERAL NOTES AND COMMITMENTS

SCALE: SHEET 1 OF 1 SHEETS STA. TO STA.

F.A.P. RTE.	SECTION	COUNTY	TOTAL SHEETS	SHEET NO.
42	(107,108)RS-4	BOND	7	2
CONTRACT NO. 76U54				
ILLINOIS FED. AID PROJECT				

USER NAME = Joseph.Arteen	DESIGNED -	REVISED -
	DRAWN -	REVISED -
	CHECKED -	REVISED -
PLOT DATE = 3/17/2026	DATE -	REVISED -

RESURFACING SCHEDULE					
LOCATION			AREA	BITUMINOUS MATERIALS (TACK COAT)	MICRO-SURFACING, SINGLEPASS
MILE STA	TO	MILE STA	SQFT	POUND	SQYD
0.057	TO	5.477	686822	17171	76314
5.479	TO	9.663	530196	13255	58911
TOTAL				30425	135224

THE APPLICATION RATE OF THE TACK COAT IS 0.025 LB/SQFT

PAVEMENT MARKING SCHEDULE											
LOCATION			THERMOPLASTIC / TEMPORARY PAVEMENT MARKING					RAISED REFLECTIVE PAVEMENT MARKER (EACH)	RAISED REFLECTIVE PAVEMENT MARKER REMOVAL (EACH)	PAVEMENT MARKING REMOVAL - WATER BLASTING (SQ FT)	
			LINE - 6"			LINE - 24"	LETTERS AND SYMBOLS (SQ FT)				
			SOLID WHITE (FT)	SOLID YELLOW (FT)	SOLID DOUBLE YELLOW (FT)	SKIP-DASH YELLOW (FT)					SOLID WHITE (FT)
0.057	TO	0.388	3,495	1,748			437			1,893.3	
0.388	TO	1.478	11,265				1439			4,234.7	
1.478	TO	1.684	2,175	1,088			272			1,178.3	
1.684	TO	1.740	591		591					394.0	
1.740	TO	1.955	2,270	1,135			284			1,229.7	
1.955	TO	3.753	18,652				2373			7,008.3	
3.753	TO	3.985	2,430	1,225			306			1,320.3	
3.985	TO	4.118	1,389		1,404					931.0	
4.118	TO	4.311	1,983				255			746.0	
4.311	TO	5.374	11,130				1403			4,177.7	
5.374	TO	5.465	961	480			120	24	61.2	629.5	
5.465	TO	5.477	127		127			12		108.7	
5.477	TO	5.479	RR OMISSION								
5.479	TO	5.490	116		116			12		101.3	
5.490	TO	5.572	866	433			108	24	61.2	578.2	
5.572	TO	6.759	12,390				1567			4,652.3	
6.759	TO	6.880	1,278	639			160			692.3	
6.880	TO	6.977	1,024				128			384.0	
6.977	TO	7.092	1,214	607			152			657.7	
7.092	TO	7.203	1,172				147			439.7	
7.203	TO	7.413	2,218	1,109			277			1,201.3	
7.413	TO	7.601	1,985		1,985					1,323.3	
7.601	TO	7.807	2,175	1,088			272			1,178.3	
7.807	TO	8.105	3,117				393			1,170.0	
8.105	TO	8.245	1,408	739			185			777.3	
8.245	TO	8.340	1,003				125			376.0	
8.340	TO	8.453	1,193	597			149			646.3	
8.453	TO	9.663	12,713				1,597			4,770.0	
SUB-TOTAL			100,340	10,888	4,223	12,149	72	122.4	634	634	42,799.5
GRAND TOTAL			127,600				72	122	634	634	42,800

SHORT TERM PAVEMENT MARKING SCHEDULE					
LOCATION			LINE - 4"		SHORT TERM PAVEMENT MARKING REMOVAL (SQ FT)
			SKIP-DASH YELLOW (FT)	WHITE DIAGONALS (FT)	
MILE STA	TO	MILE STA	(FT)	(FT)	(SQ FT)
0.057	TO	5.477	7806	2290	1,249.0
5.477	TO	5.479	RR OMISSION		
5.479	TO	9.663	6024	1768	964.0
SUB-TOTAL			13830	4058	2,213.0
GRAND TOTAL			17888		2,213

3 APPLICATIONS OF THE YELLOW SKIP-DASH AND 2 APPLICATIONS OF THE WHITE DIAGONALS WERE ASSUMED. ONLY THE REMOVAL OF THE FINAL APPLICATION WILL BE PAID FOR.

SHOULDER RESURFACING SCHEDULE						
MILE STA	TO	MILE STA	LENGTH	WIDTH	AREA	BITUMINOUS MATERIALS (FOG SEAL)
			FOOT	FOOT	(SQ FT)	(POUND)
0.057	TO	5.477	28618	16	457882	22894
5.479	TO	9.663	22092	16	353464	17673
TOTAL						40567

FOG SEAL QUANTITY IS CALCULATED USING A UNIT WEIGHT OF 0.05 LB/SQFT.

MODEL: Schedules (Sheet)
FILE NAME: c:\p\work\hollantest\p116276\0876\54-sh-schedule.dgn

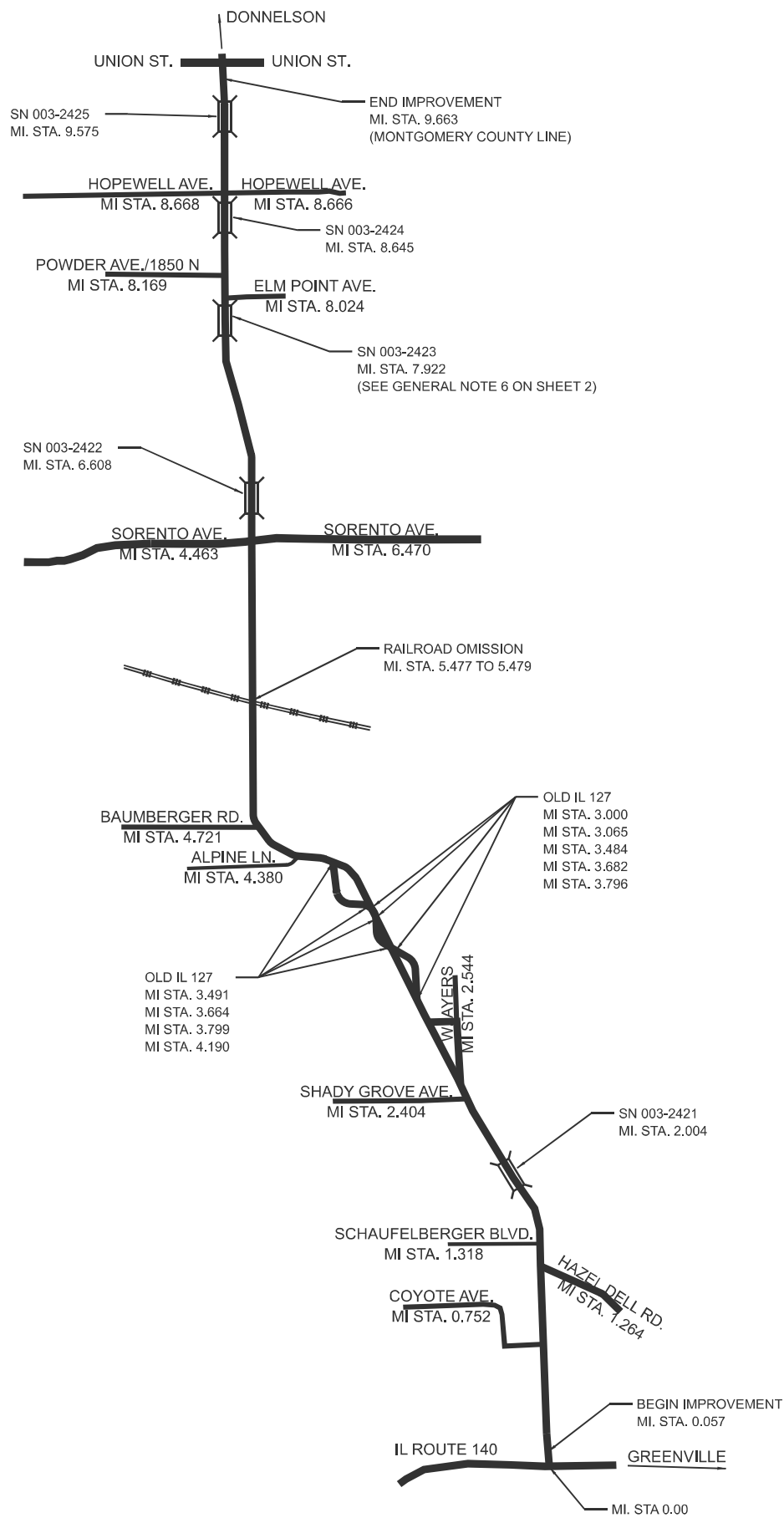
USER NAME = Joseph.Arteen	DESIGNED -	REVISED -
	DRAWN -	REVISED -
	CHECKED -	REVISED -
PLOT DATE = 3/17/2026	DATE -	REVISED -

STATE OF ILLINOIS
DEPARTMENT OF TRANSPORTATION

SCHEDULE OF QUANTITIES

SCALE: SHEET 1 OF 1 SHEETS STA. TO STA.

F.A.P. RTE.	SECTION	COUNTY	TOTAL SHEETS	SHEET NO.
42	(107.108)RS-4	BOND	7	5
CONTRACT NO. 76U54				
ILLINOIS FED. AID PROJECT				



N

 NOT TO SCALE

MODEL: Location Map (Sheet)
 FILE NAME: c:\p\work\wv\loc\locmap\116276\0876U54-sht-plan.dgn

USER NAME = Joseph.Artean	DESIGNED -	REVISED -
	DRAWN -	REVISED -
	CHECKED -	REVISED -
PLOT DATE = 3/16/2026	DATE -	REVISED -

**STATE OF ILLINOIS
 DEPARTMENT OF TRANSPORTATION**

LOCATION MAP

SCALE: NTS SHEET 1 OF 1 SHEETS STA. TO STA.

F.A.P. RTE.	SECTION	COUNTY	TOTAL SHEETS	SHEET NO.
42	(107,108)RS-4	BOND	7	7
CONTRACT NO. 76U54				
ILLINOIS FED. AID PROJECT				