

FOR INDEX OF SHEETS, SEE SHEET NO. 2

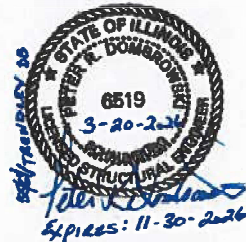
155/64 TRAFFIC DATA:
SPEED LIMIT: 50 MPH
DESIGN SPEED: 55 MPH

2024 ADT = 30800 (ACTUAL)
2026 ADT = 30900 (ESTIMATED)
2046 ADT = 34200 (ESTIMATED)
S.U. = 3.2% M.U. = 11.4%

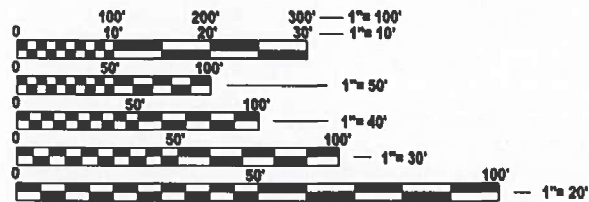


J.P. O'Neill

JOHN P. O'NEILL
 ILLINOIS REGISTERED PROFESSIONAL ENGINEER NO. 062-048834
 MY LICENSE EXPIRES ON 11-30-2027
 APPLY TO SHEETS: I-9



PETER R. DOMBROWSKI
 ILLINOIS REGISTERED STRUCTURAL ENGINEER NO. 081-006519
 MY LICENSE EXPIRES ON 11-30-2026
 APPLY TO SHEETS: 10-14



FULL SIZE PLANS HAVE BEEN PREPARED USING STANDARD ENGINEERING SCALES. REDUCED SIZED PLANS WILL NOT CONFORM TO STANDARD SCALES. IN MAKING MEASUREMENTS ON REDUCED PLANS, THE ABOVE SCALES MAY BE USED.

J.U.L.I.E.
 JOINT UTILITY LOCATION INFORMATION FOR EXCAVATION
 1-800-892-0123
 OR 811

PROJECT ENGINEER : CHERYL KEPLAR
PROJECT MANAGER : BRANDON HUMPHREYS

CONTRACT NO. 76U76

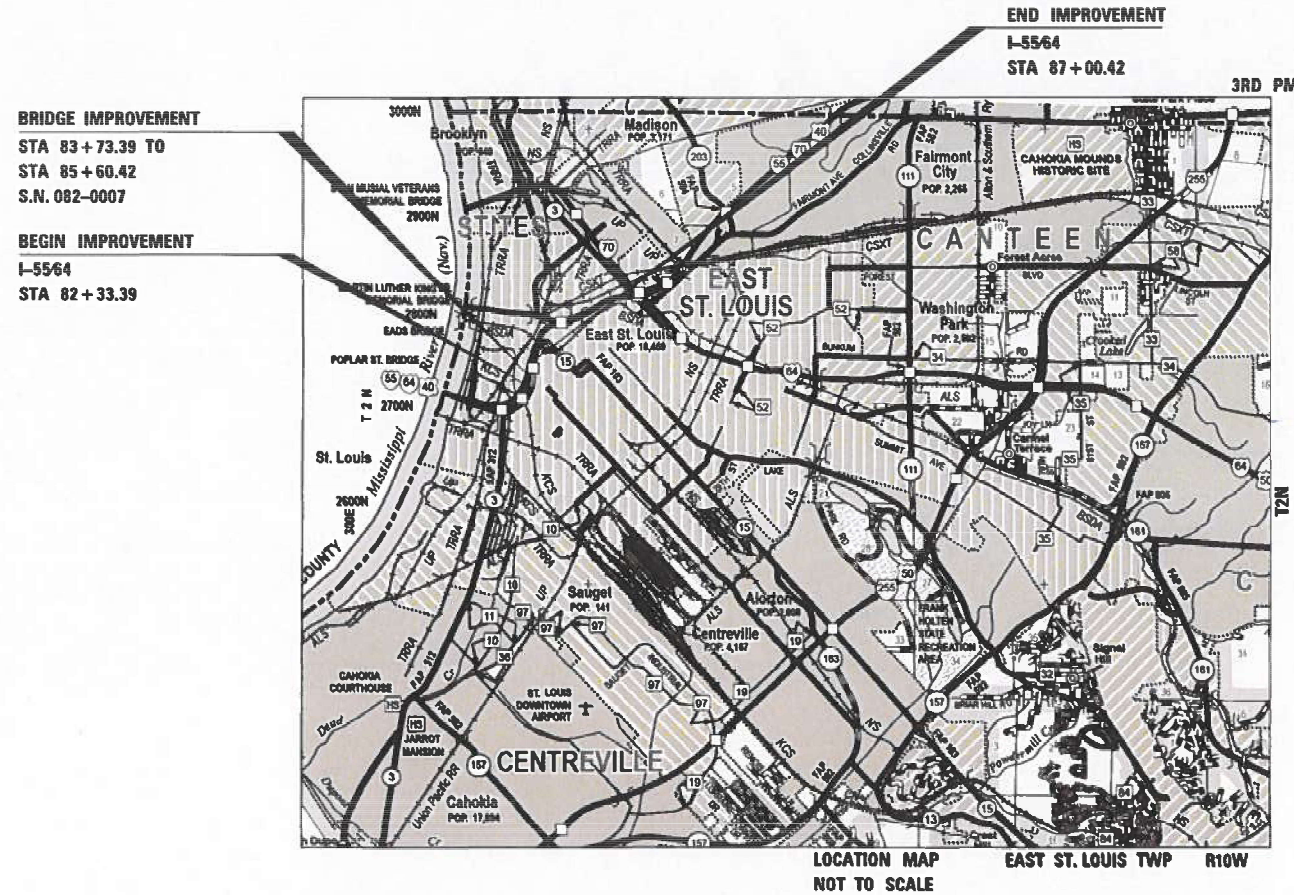
CONSULTING ENGINEERS **BLA, Inc.**
 333 PIERCE ROAD SUITE 200 ITASCA, IL 00143
 P:(630) 438 6400 F:(630) 438 6444 www.bla-inc.com

STATE OF ILLINOIS
DEPARTMENT OF TRANSPORTATION

PROPOSED
HIGHWAY PLANS

FAI RTE 70: 155/64 OVER TRENDLEY AVENUE
SECTION 82-3HVB-2BDR
BRIDGE DECK OVERLAY, BRIDGE JOINT REPLACE/REPAIR
ST CLAIR COUNTY

C-98-140-25



GROSS LENGTH = 309 FT. = 0.058 MILE
 NET LENGTH = 309 FT. = 0.058 MILE

F.A.I. RTE.	SECTION	COUNTY	TOTAL SHEETS	SHEET NO.
70	82-3HVB-2BDR	ST. CLAIR	14	1
		ILLINOIS	CONTRACT NO. 76U76	



LOCATION OF SECTION INDICATED THIS: -

STATE OF ILLINOIS
 DEPARTMENT OF TRANSPORTATION

SUBMITTED *Mar 25 2026*
[Signature]
 REGIONAL ENGINEER

May 8 2026
[Signature]
 ENGINEER OF DESIGN AND ENVIRONMENT

May 8 2026
[Signature]
 DIRECTOR OF HIGHWAYS PROJECT IMPLEMENTATION

PRINTED BY THE AUTHORITY
OF THE STATE OF ILLINOIS

INDEX OF SHEETS

SHEET NO.	DESCRIPTION
1	COVER SHEET
2	INDEX OF SHEETS, STATE STANDARDS, AND GENERAL NOTES
3	SUMMARY OF QUANTITIES
4	ROADWAY PLAN
5-8	MAINTENANCE OF TRAFFIC PLAN
9	PAVEMENT MARKING PLANS
10-14	STRUCTURAL PLANS

HIGHWAY STANDARDS

STANDARD NO.	DESCRIPTION
000001-09	STANDARD SYMBOLS, ABBREVIATIONS, AND PATTERNS
001001-02	AREAS OF REINFORCEMENT BARS
001006	DECIMAL OF AN INCH AND OF A FOOT
701400-12	APPROACH TO LANE CLOSURE, FREEWAY/EXPRESS
701401-13	LANE CLOSURE, FREEWAY/EXPRESSWAY
701411-09	LANE CLOSURE, MULTILANE, AT ENTRANCE OR EXIT RAMP, FOR SPEEDS ≥ 45 MPH
701428-01	TRAFFIC CONTROL SETUP AND REMOVAL FREEWAY/EXPRESSWAY
701446-11	TWO LANE CLOSURE, FREEWAY/EXPRESSWAY
701451-05	RAMP CLOSURE FREEWAY/EXPRESSWAY
701901-11	TRAFFIC CONTROL DEVICES
780001-05	TYPICAL PAVEMENT MARKINGS

GENERAL NOTES

- NO SURVEY WAS PERFORMED FOR THIS PROJECT, AND THE PLANS WERE CREATED USING BING MAPS.
- THE RESIDENT ENGINEER SHALL VERIFY THE EXISTENCE OF HIGHWAY LIGHTING, INTELLIGENT TRANSPORTATION SYSTEMS (I.T.S.) UTILITIES, AND/OR ELECTRICAL CABLES ASSOCIATED WITH TRAFFIC SIGNALS WITHIN THE PROJECT LIMITS. IF ANY OF THESE EXIST WITHIN THE PROJECT LIMITS, AND IF THESE ITEMS REQUIRE LOCATING, THE CONTRACTOR SHALL BE DIRECTED TO DO SO ACCORDING TO SECTION 803 OF THE STANDARD SPECIFICATIONS. THIS WORK SHALL BE PAID FOR ACCORDING TO ARTICLE 109.04 OF THE STANDARD SPECIFICATIONS.
- THE DEPARTMENT STRONGLY ENCOURAGES THE PRIME CONTRACTOR AND THEIR APPROVED SUB-CONTRACTORS TO HIRE MINORITY, WOMEN AND DISADVANTAGED INDIVIDUALS FROM ITS FEDERALLY FUNDED HIGHWAY CONSTRUCTION CAREERS TRAINING PROGRAM (HCCTP) TO HELP MEET WORKFORCE AND TRAINEE GOALS. THIS PROGRAM IS TRAINING MINORITIES, WOMEN AND DISADVANTAGED INDIVIDUALS IN HIGHWAY CONSTRUCTION-RELATED SKILLS, E.G., MATH FOR THE TRADES, JOB READINESS, TECHNICAL SKILLS COURSEWORK (CARPENTRY, CONCRETE FLATWORK, BLUEPRINT READING, SITE PLANS, SITE WORK, TOOLS USE, ETC.) AND OSHA 10 HOUR CERTIFICATION, TO PREPARE THEM FOR A CAREER IN THE HIGHWAY CONSTRUCTION TRADES. GRADUATES ARE WELL-TRAINED AND READY TO BECOME PRODUCTIVE ENTRY-LEVEL CONSTRUCTION WORKERS. CONTACT THE DISTRICT 8 EEO OFFICE AT 618-346-3360 AND/OR THE HCCTP COORDINATOR AT 618-874-6528 TO LEARN MORE ABOUT THE PROGRAM AND FOR ASSISTANCE IN MEETING WORKFORCE AND TRAINEE GOALS.
- 2 CHANGEABLE MESSAGE SIGN SHALL BE REQUIRED FOR THIS PROJECT. IT SHALL BE PLACED TWO WEEKS PRIOR TO ANY LANE CLOSURE [AND SHALL REMAIN UP FOR THE DURATION OF THE PROJECT IF APPLICABLE]. THE CHANGEABLE MESSAGE SIGNS SHALL BE PLACED ALONG I55/64 EB OR AT THE DIRECTION OF THE ENGINEER.
- THE USE OF VIBRATORY ROLLERS WILL NOT BE PERMITTED FOR THIS PROJECT. THIS DOES NOT RELIEVE THE CONTRACTOR OF DENSITY REQUIREMENTS FOR THE CONSTRUCTION OF THE BITUMINOUS PAVEMENTS AS SPECIFIED IN SECTIONS 406 & 407 OF THE STANDARD SPECIFICATIONS.
- THE PROPOSED PAVEMENT MARKING SHALL MATCH THE LOCATIONS OF THE EXISTING PAVEMENT MARKING, OR AS DIRECTED BY THE ENGINEER.
- THE CONTRACTOR SHALL BE AWARE THAT THERE ARE MANHOLES AND INLETS LOCATED WITHIN THE DESIGN OVERLAY AREAS. CARE SHALL BE TAKEN IN THESE LOCATIONS DURING OVERLAY OPERATIONS.
- THE CONTRACTOR SHALL PROVIDE POSITIVE AND ADEQUATE DRAINAGE AT ALL TIMES. THIS MAY INCLUDE, BUT IS NOT LIMITED TO, REPLACEMENT OR RECONSTRUCTION OF EXISTING DRAINAGE STRUCTURES THAT HAVE BEEN DAMAGED OR REMOVED, REGRADING, PLUGGING ABANDONED PIPES, OR OTHER ACTIVITIES REQUIRED BY THE ENGINEER.

HOT-MIX ASPHALT MIXTURE REQUIREMENTS

MIXTURE USE(S):	POLY SURFACE	POLY BINDER	POLY SHOULDER
AC/PG	SBS PG 70-28	SBS PG 70-28	SBS PG 70-28
RAP % (MAX)	SEE SPECIAL PROVISIONS	SEE SPECIAL PROVISIONS	SEE SPECIAL PROVISIONS
DESIGN AIR VOIDS:	4.0% @ Ndes=80	4.0% @ Ndes=50	4.0% @ Ndes=70
MIXTURE COMPOSITION (GRADATION MIXTURE)	SMA 9.5	IL 4.75	IL-9.5
FRICTION AGGREGATE	MIXTURE "E"		MIXTURE "E"
QUALITY MANAGEMENT PROGRAM	QC/QA	QC/QA	QC/QA
MATERIAL TRANSFER DEVICE (REQUIRED?)	NO	NO	NO

PLAN QUANTITIES FOR BITUMINOUS CONCRETE SURFACE COURSE ITEMS ARE CALCULATED USING A UNIT WEIGHT OF 112 LB/ SQ YD/ IN.

COMMITMENTS

NONE

REV - MS

MODEL: GenNotesSh01 [Sheet]
FILE NAME: W:\191-234_IDOT_214043_T03_15564.over_Trendley\CADD_Sheets\76U76-shh-gemnote.dgn



USER NAME = jrodriguez	DESIGNED - JPR	REVISED -
	DRAWN - JPR	REVISED -
PLOT SCALE = 0.16666633' / in.	CHECKED - GJE	REVISED -
PLOT DATE = 3/18/2026	DATE -	REVISED -

**STATE OF ILLINOIS
DEPARTMENT OF TRANSPORTATION**

**INDEX OF SHEETS, GENERAL NOTES,
HIGHWAY STANDARDS & COMMITMENTS**

SCALE: NTS SHEET 1 OF 1 SHEETS STA. N/A TO STA. N/A

F.A.I. RTE.	SECTION	COUNTY	TOTAL SHEETS	SHEET NO.
70	82-3HVB-2BDR	ST. CLAIR	14	2
CONTRACT NO. 76U76				
ILLINOIS FED. AID PROJECT				

SPECIALTY ITEM	CODE NO.	ITEM	UNIT	Bridge Preservation
				100% STATE URBAN 0047
	28000510	INLET FILTERS	EACH	3
	40600295	POLYMERIZED BITUMINOUS MATERIALS (TACK COAT)	POUND	267
	40600370	LONGITUDINAL JOINT SEALANT	FOOT	840
	40600982	HOT-MIX ASPHALT SURFACE REMOVAL - BUTT JOINT	SQ YD	44
	40603200	POLYMERIZED HOT-MIX ASPHALT BINDER COURSE, IL-4.75, N50	TON	180
	40604172	POLYMERIZED HOT-MIX ASPHALT SURFACE COURSE, IL-9.5, MIX "E", N70	TON	60
	40605024	POLYMERIZED HOT-MIX ASPHALT SURFACE COURSE, STONE MATRIX ASPHALT, 9.5, MIX "E", N80	TON	92
	50102400	CONCRETE REMOVAL	CU YD	5.7
	50300255	CONCRETE SUPERSTRUCTURE	CU YD	5.3
	50800205	REINFORCEMENT BARS, EPOXY COATED	POUND	1,150
	52000050	PREFORMED JOINT SEAL 4"	FOOT	91
	53016000	DECK SLAB REPAIR (PARTIAL)	SQ YD	50
	53016002	DECK SLAB REPAIR (FULL DEPTH, TYPE II)	SQ YD	50

SPECIALTY ITEM	CODE NO.	ITEM	UNIT	Bridge Preservation
				100% STATE URBAN 0047
	53101002	BRIDGE DECK SCARIFICATION 3/4"	SQ YD	990
	53101411	BRIDGE DECK LATEX CONCRETE OVERLAY, 3"	SQYD	843
	60260100	INLETS TO BE ADJUSTED	EACH	1
	67100100	MOBILIZATION	L SUM	1
	70107007	PAVEMENT MARKING BLACKOUT TAPE, 7"	FOOT	725
	70107025	CHANGEABLE MESSAGE SIGN	CAL DA	50
	70300150	SHORT TERM PAVEMENT MARKING REMOVAL	SQ FT	650
	70307130	TEMPORARY PAVEMENT MARKING - LINE 6" - TYPE IV TAPE	FOOT	15,872
*	78000400	THERMOPLASTIC PAVEMENT MARKING - LINE 6"	FOOT	1,051
	X4400100	PORTLAND CEMENT CONCRETE SURFACE REMOVAL (VARIABLE DEPTH)	SQ YD	195
	X4401198	HOT-MIX ASPHALT SURFACE REMOVAL, VARIABLE DEPTH	SQ YD	918
	X7010216	TRAFFIC CONTROL AND PROTECTION, (SPECIAL)	L SUM	1
	Z0013798	CONSTRUCTION LAYOUT	L SUM	1

MODEL: GenNotesSh01 [Sheet]
 FILE NAME: W:\191-234 IDOT_214043_T03_15564 over Trendley\CADD Sheets\76U76-sh-SQ.dgn



USER NAME = jrodriguez	DESIGNED - JPR	REVISED -
	DRAWN - JPR	REVISED -
PLOT SCALE = 0.16666633' / in.	CHECKED - GJE	REVISED -
PLOT DATE = 3/16/2026	DATE -	REVISED -

STATE OF ILLINOIS
DEPARTMENT OF TRANSPORTATION

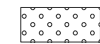
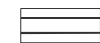


SUMMARY OF QUANTITIES

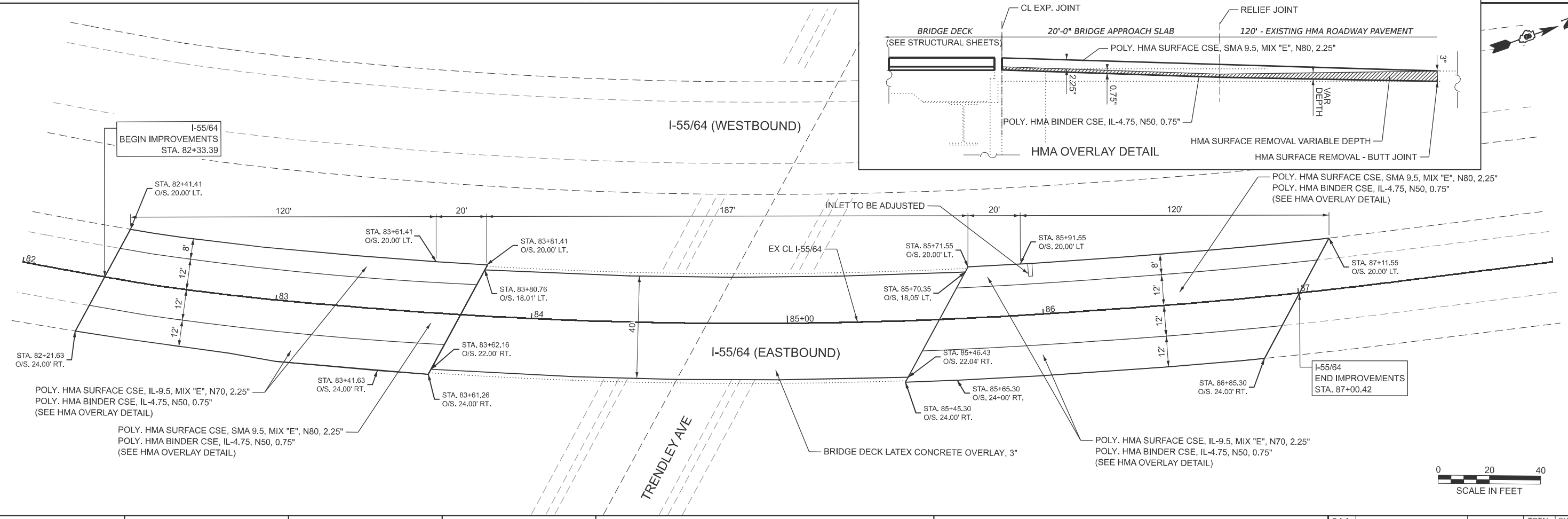
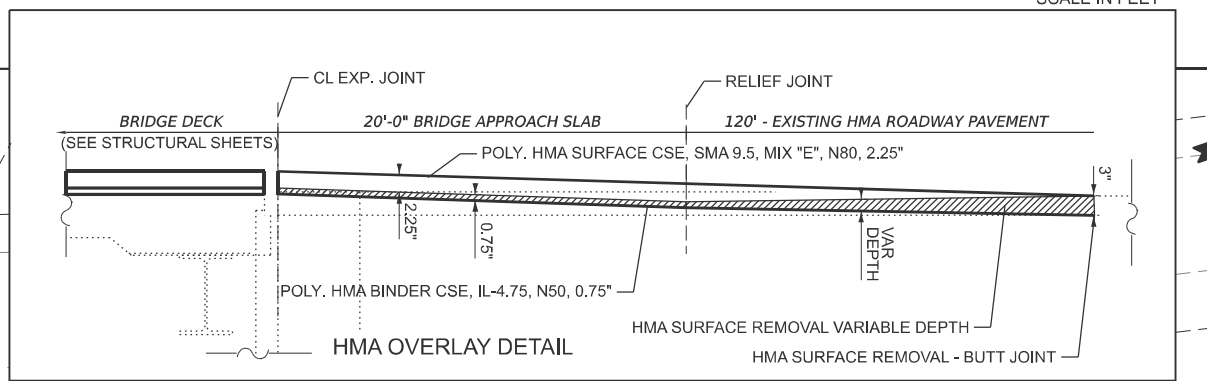
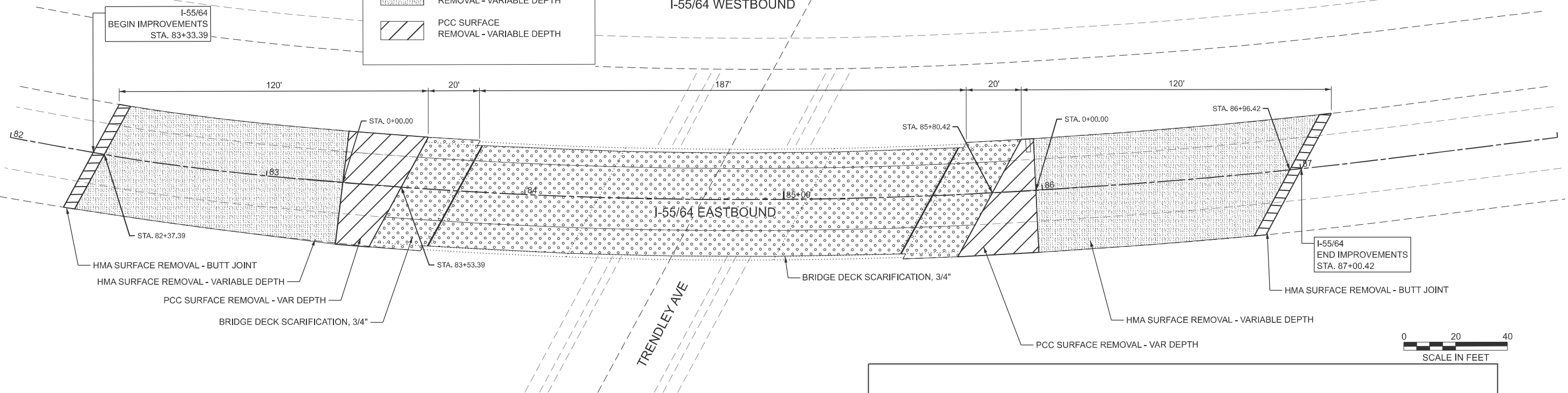
SCALE: NTS SHEET 1 OF 1 SHEETS STA. N/A TO STA. N/A

F.A.I. RTE.	SECTION	COUNTY	TOTAL SHEETS	SHEET NO.
70	82-3HVB-2BDR	ST. CLAIR	14	3
CONTRACT NO. 76U76				
ILLINOIS FED. AID PROJECT				

REV - MS

LEGEND

-  BRIDGE DECK SCARIFICATION, 3/4"
-  HMA SURFACE REMOVAL - BUTT JOINT
-  HMA SURFACE REMOVAL - VARIABLE DEPTH
-  PCC SURFACE REMOVAL - VARIABLE DEPTH



MODEL: I-55 - Removal and Plan
FILE NAME: W:\191-234 IDOT_214043_T03_15564 over Trendley\CADD Sheets\76U76-sh-Plan.dgn



USER NAME = jrodriguez	DESIGNED - JPR	REVISED -
	DRAWN - JPR	REVISED -
	CHECKED - GJE	REVISED -
PLOT DATE = 5/4/2026	DATE -	REVISED -

**STATE OF ILLINOIS
DEPARTMENT OF TRANSPORTATION**

ROADWAY PLAN

I-55/64 OVER TRENDLEY AVE BRIDGE REPAIRS

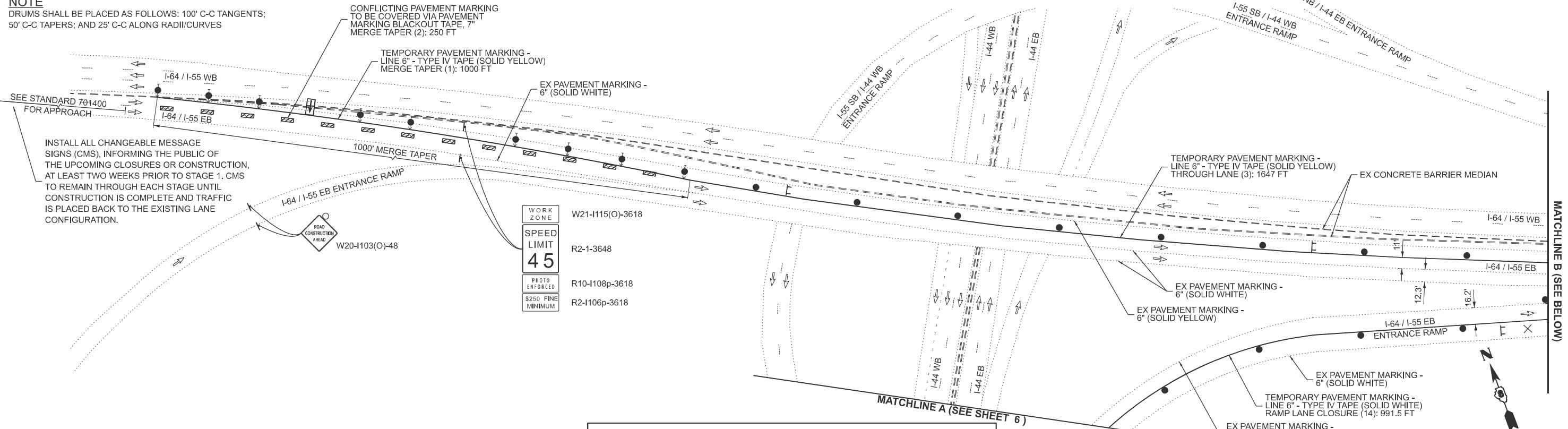
SCALE: 1"=20'

SHEET 1 OF 1 SHEETS

STA. 82+00.00 TO STA. 88+00.00

F.A.I. RTE.	SECTION	COUNTY	TOTAL SHEETS	SHEET NO.
70	82-3HVB-2BDR	ST. CLAIR	14	4
CONTRACT NO. 76U76				
ILLINOIS FED. AID PROJECT				

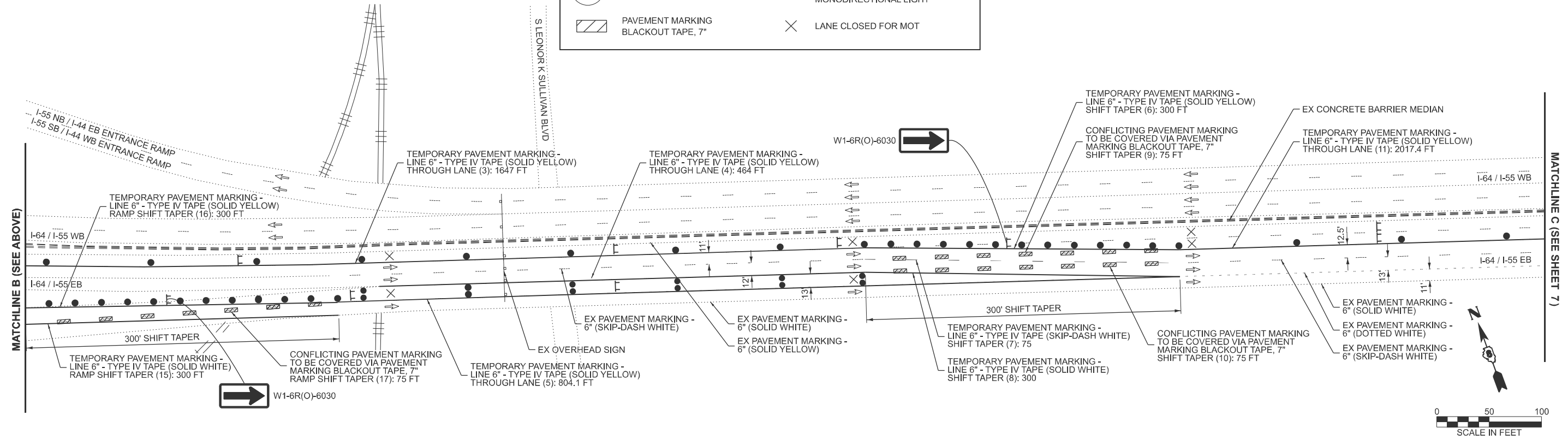
NOTE
 DRUMS SHALL BE PLACED AS FOLLOWS: 100' C-C TANGENTS;
 50' C-C TAPERS; AND 25' C-C ALONG RADII/CURVES



INSTALL ALL CHANGEABLE MESSAGE SIGNS (CMS), INFORMING THE PUBLIC OF THE UPCOMING CLOSURES OR CONSTRUCTION, AT LEAST TWO WEEKS PRIOR TO STAGE 1. CMS TO REMAIN THROUGH EACH STAGE UNTIL CONSTRUCTION IS COMPLETE AND TRAFFIC IS PLACED BACK TO THE EXISTING LANE CONFIGURATION.

WORK ZONE	W21-1115(O)-3618
SPEED LIMIT	R2-1-3648
PHOTO ENFORCED	R10-1108p-3618
\$250 FINE MINIMUM	R2-1106p-3618

LEGEND	
	WORK AREA
	DIRECTION OF TRAFFIC
	SIGN ON PORTABLE SUPPORT
	ARROW BOARD
	PAVEMENT MARKING BLACKOUT TAPE, 7"
	TYPE II BARRICADE OR DRUM WITH STEADY BURNING MONODIRECTIONAL LIGHT
	TYPE III BARRICADE
	DIRECTION INDICATOR BARRICADE WITH STEADY BURN MONODIRECTIONAL LIGHT
	LANE CLOSED FOR MOT



MODEL: EB-1 (Sheet)
 FILE NAME: W1191-234 IDOT_214043_T03_15564 over Trendby/CADD Drawings/Horner & Shifrin CAD files/D876U82-shr-staging.dgn



USER NAME = jrodriguez	DESIGNED -	REVISED -
	DRAWN -	REVISED -
	CHECKED -	REVISED -
PLOT DATE = 3/18/2026	DATE -	REVISED -

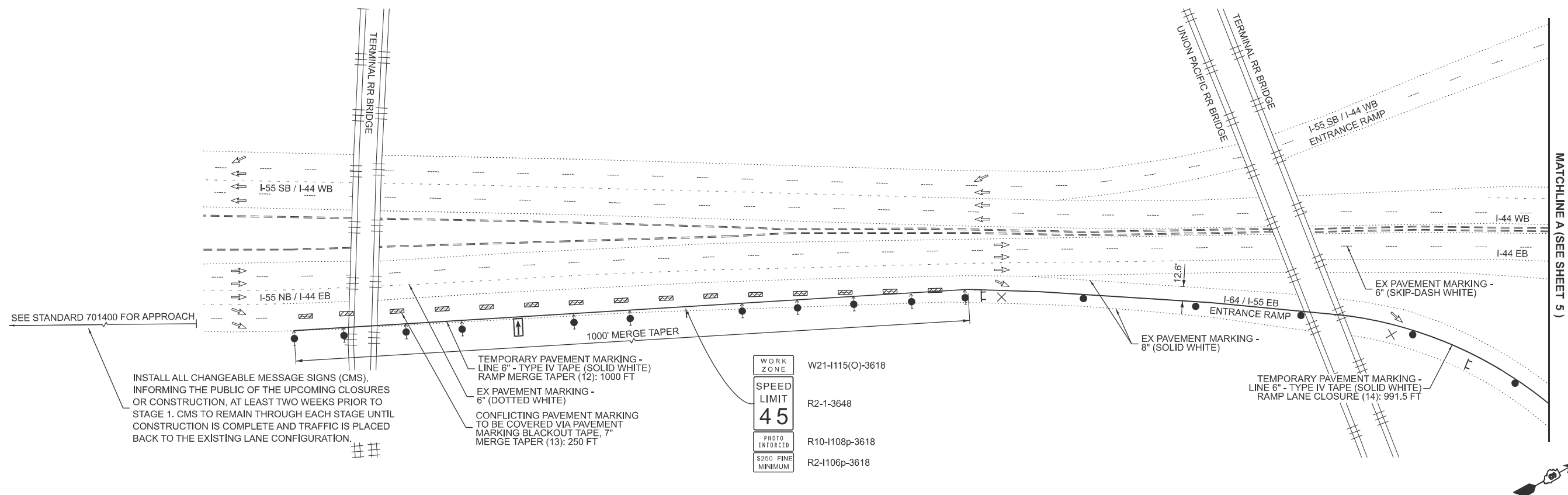
**STATE OF ILLINOIS
 DEPARTMENT OF TRANSPORTATION**

**MAINTENANCE OF TRAFFIC PLAN
 STAGE 1 - EASTBOUND**

SCALE: 1"=50' SHEET 1 OF 4 SHEETS STA. TO STA.

F.A.I. RTE.	SECTION	COUNTY	TOTAL SHEETS	SHEET NO.
70	82-3HVB-BDR-1	ST. CLAIR	14	5
CONTRACT NO. 76U76				
ILLINOIS FED. AID PROJECT				

NOTE
 DRUMS SHALL BE PLACED AS FOLLOWS: 100' C-C TANGENTS;
 50' C-C TAPERS; AND 25' C-C ALONG RADII/CURVES



INSTALL ALL CHANGEABLE MESSAGE SIGNS (CMS), INFORMING THE PUBLIC OF THE UPCOMING CLOSURES OR CONSTRUCTION, AT LEAST TWO WEEKS PRIOR TO STAGE 1. CMS TO REMAIN THROUGH EACH STAGE UNTIL CONSTRUCTION IS COMPLETE AND TRAFFIC IS PLACED BACK TO THE EXISTING LANE CONFIGURATION.

TEMPORARY PAVEMENT MARKING - LINE 6" - TYPE IV TAPE (SOLID WHITE) RAMP MERGE TAPER (12): 1000 FT
 EX PAVEMENT MARKING - 6" (DOTTED WHITE)
 CONFLICTING PAVEMENT MARKING TO BE COVERED VIA PAVEMENT MARKING BLACKOUT TAPE, 7" MERGE TAPER (13): 250 FT

WORK ZONE W21-I115(O)-3618
 SPEED LIMIT 45 R2-1-3648
 PHOTO ENFORCED R10-1108p-3618
 S250 FINE MINIMUM R2-1106p-3618

LEGEND	
	WORK AREA
	DIRECTION OF TRAFFIC
	SIGN ON PORTABLE SUPPORT
	ARROW BOARD
	PAVEMENT MARKING BLACKOUT TAPE, 7"
	TYPE II BARRICADE OR DRUM WITH STEADY BURNING MONODIRECTIONAL LIGHT
	TYPE III BARRICADE
	DIRECTION INDICATOR BARRICADE WITH STEADY BURN MONODIRECTIONAL LIGHT
	LANE CLOSED FOR MOT



MODEL: EB 1A (Sheet) FILE NAME: W:\191\234 IDOT_214043_T03_15564 over Trendby\CADD Drawings\Homer & Shifrin CAD files\876\82-shr-staging.dgn



USER NAME = jrodriguez	DESIGNED -	REVISED -
	DRAWN -	REVISED -
	CHECKED -	REVISED -
PLOT DATE = 3/18/2026	DATE -	REVISED -

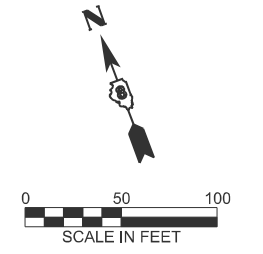
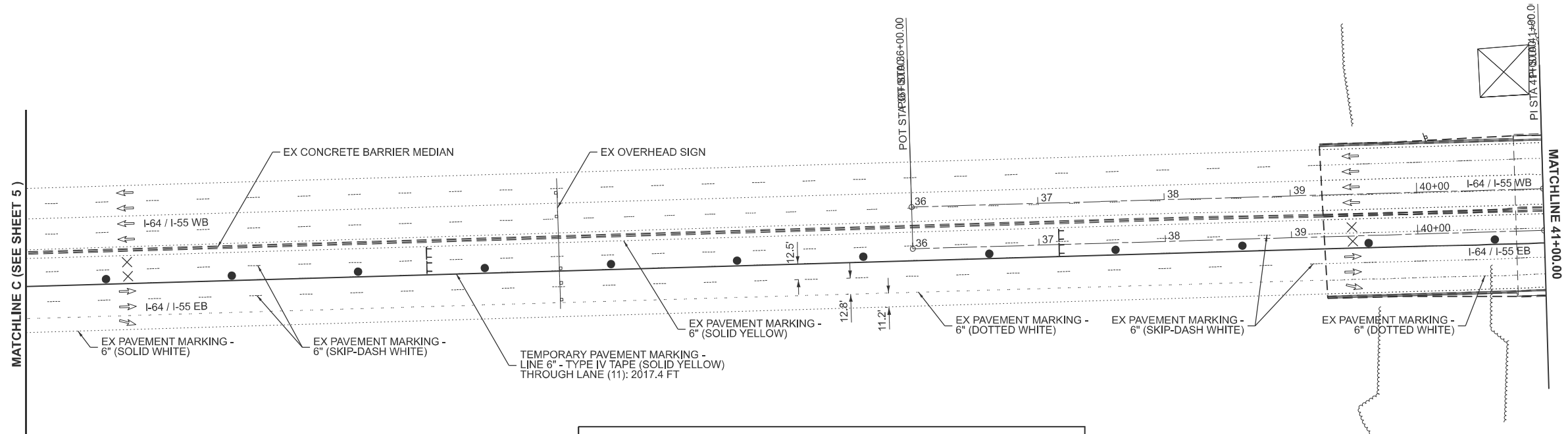
**STATE OF ILLINOIS
 DEPARTMENT OF TRANSPORTATION**

**MAINTENANCE OF TRAFFIC PLAN
 STAGE 1 - EASTBOUND**

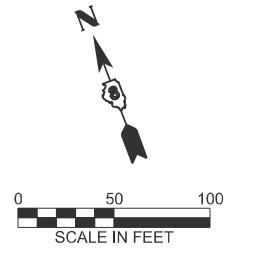
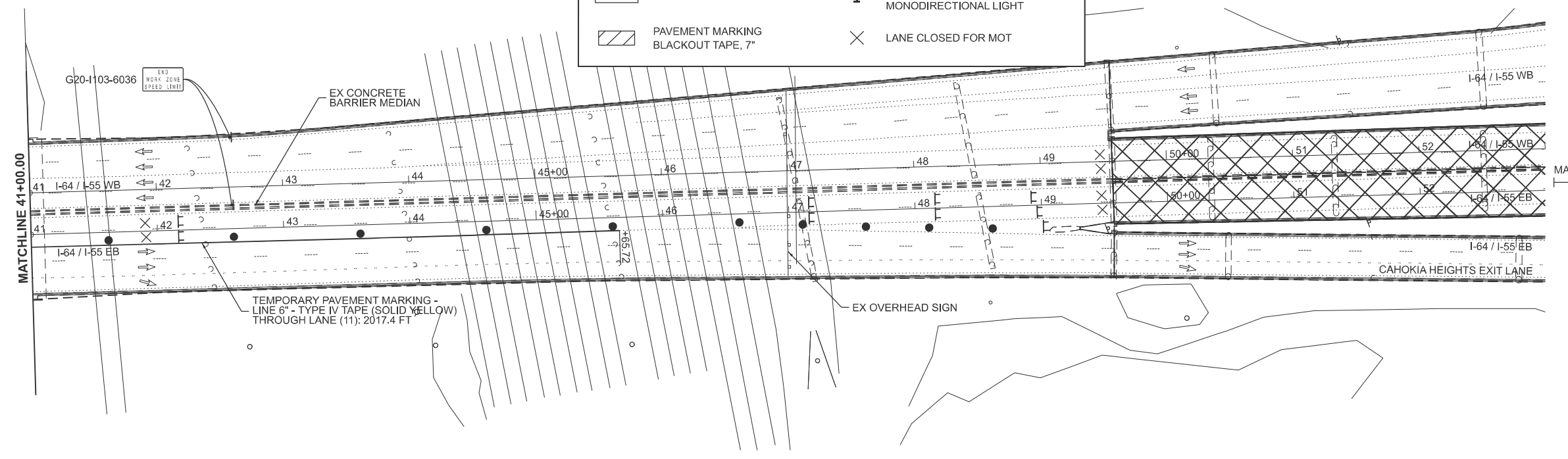
SCALE: 1"=50' SHEET 2 OF 4 SHEETS STA. TO STA.

F.A.I RTE.	SECTION	COUNTY	TOTAL SHEETS	SHEET NO.
70	82-3HVB-BDR-1	ST. CLAIR	14	6
CONTRACT NO. 76U76				
ILLINOIS FED. AID PROJECT				

NOTE
 DRUMS SHALL BE PLACED AS FOLLOWS: 100' C-C TANGENTS;
 50' C-C TAPERS; AND 25' C-C ALONG RADII/CURVES



LEGEND	
	WORK AREA
	DIRECTION OF TRAFFIC
	SIGN ON PORTABLE SUPPORT
	ARROW BOARD
	PAVEMENT MARKING BLACKOUT TAPE, 7"
	TYPE II BARRICADE OR DRUM WITH STEADY BURNING MONODIRECTIONAL LIGHT
	TYPE III BARRICADE
	DIRECTION INDICATOR BARRICADE WITH STEADY BURN MONODIRECTIONAL LIGHT
	LANE CLOSED FOR MOT



MODEL: EB-3 (Sheet)
 FILE NAME: W:\191-234 IDOT_214043_T03_15564 over Trendby\CADD Drawings\Homer & Shifrin CAD files\876282-shr-staging.dgn



USER NAME = jrodriguez	DESIGNED -	REVISED -
	DRAWN -	REVISED -
	CHECKED -	REVISED -
PLOT DATE = 3/18/2026	DATE -	REVISED -

STATE OF ILLINOIS
DEPARTMENT OF TRANSPORTATION

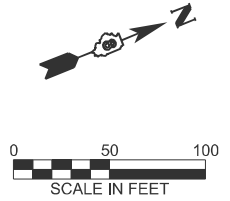
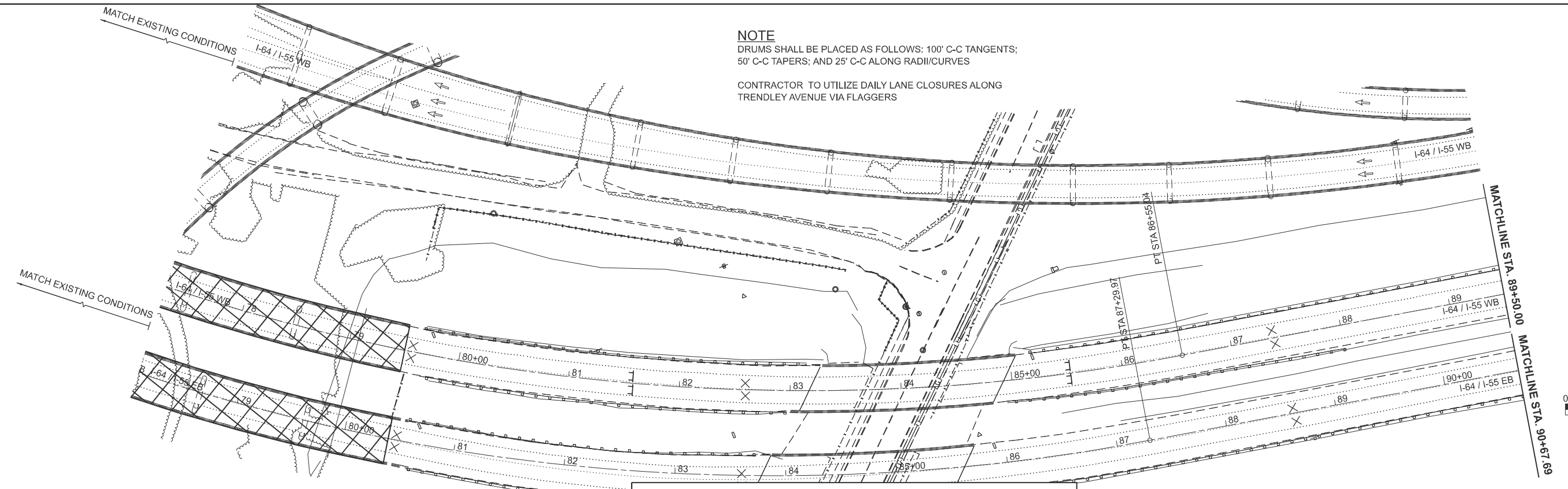
MAINTENANCE OF TRAFFIC PLAN
STAGE 1 - EASTBOUND

SCALE: 1"=50' SHEET 3 OF 4 SHEETS STA. 36+00.00 TO STA. 53+00.00

F.A.I R.T.E.	SECTION	COUNTY	TOTAL SHEETS	SHEET NO.
70	82-3HVB-BDR-1	ST. CLAIR	14	7
CONTRACT NO. 76U76				
ILLINOIS FED. AID PROJECT				

NOTE
 DRUMS SHALL BE PLACED AS FOLLOWS: 100' C-C TANGENTS;
 50' C-C TAPERS; AND 25' C-C ALONG RADII/CURVES

CONTRACTOR TO UTILIZE DAILY LANE CLOSURES ALONG
 TRENDLEY AVENUE VIA FLAGGERS



LEGEND	
	WORK AREA
	DIRECTION OF TRAFFIC
	SIGN ON PORTABLE SUPPORT
	ARROW BOARD
	PAVEMENT MARKING BLACKOUT TAPE, 7"
	TYPE II BARRICADE OR DRUM WITH STEADY BURNING MONODIRECTIONAL LIGHT
	TYPE III BARRICADE
	DIRECTION INDICATOR BARRICADE WITH STEADY BURN MONODIRECTIONAL LIGHT
	LANE CLOSED FOR MOT

MODEL: WB 1 - WB 1 (Sheet)
 FILE NAME: c:\p\p\p\kubalanza\homer\shifrin.com\lot\lms33435\08761\82-eh-staging.dgn



USER NAME = jrodriguez	DESIGNED -	REVISED -
	DRAWN -	REVISED -
	CHECKED -	REVISED -
PLOT DATE = 3/18/2026	DATE -	REVISED -

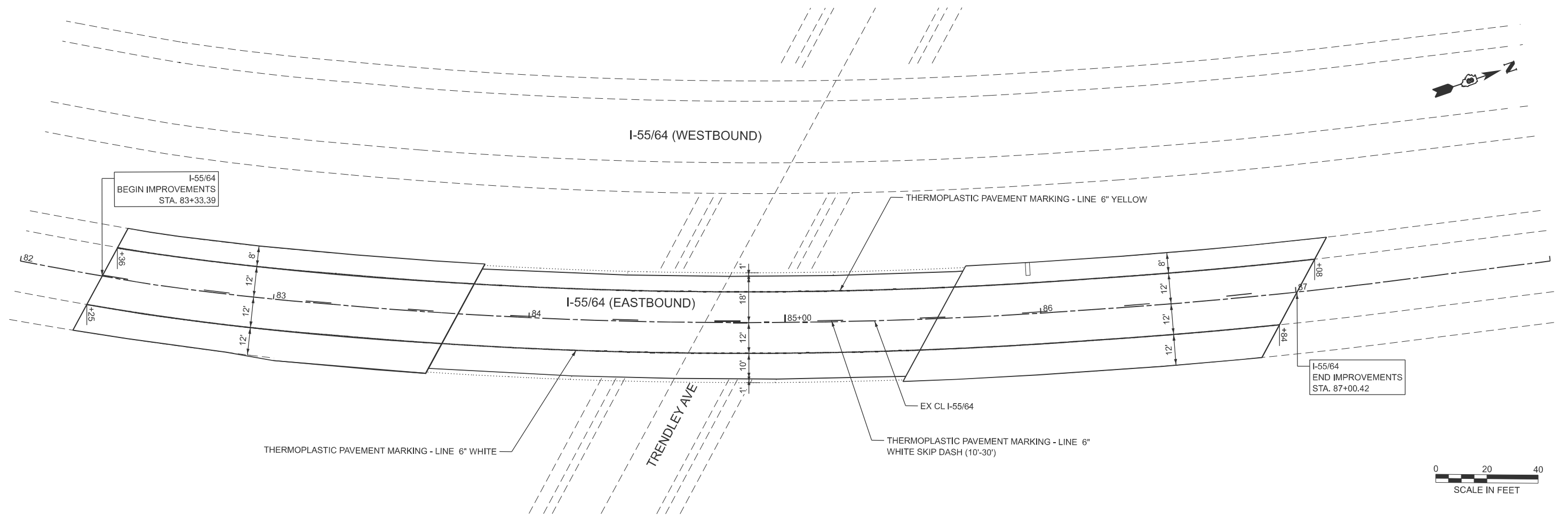
**STATE OF ILLINOIS
 DEPARTMENT OF TRANSPORTATION**

**MAINTENANCE OF TRAFFIC PLAN
 STAGE 2 - WESTBOUND**

SCALE: 1"=50' SHEET 4 OF 4 SHEETS STA. 77+50.00 TO STA. 101+50.00

F.A.I RTE.	SECTION	COUNTY	TOTAL SHEETS	SHEET NO.
70	82-3HVB-BDR-1	ST. CLAIR	14	8
CONTRACT NO. 76U76				
ILLINOIS FED. AID PROJECT				

MODEL: PMK Sheet
 FILE NAME: W:\191-234 IDOT_214043_T03_15564 over Trendley\CADD Sheets\876\76-shr-PMK.dgn



USER NAME = jrodriguez	DESIGNED - JPR	REVISED -
	DRAWN - JPR	REVISED -
	CHECKED - GJE	REVISED -
PLOT DATE = 5/4/2026	DATE -	REVISED -

**STATE OF ILLINOIS
 DEPARTMENT OF TRANSPORTATION**

**PAVEMENT MARKING PLANS
 I55-64 OVER TRENDLEY AVE BRIDGE REPAIRS**

SCALE: 1"=20' SHEET 1 OF 1 SHEETS STA. 82+00.00 TO STA. 88+00.00

F.A.I. RTE.	SECTION	COUNTY	TOTAL SHEETS	SHEET NO.
70	82-3HVB-2BDR	ST. CLAIR	14	9
CONTRACT NO. 76U76				
ILLINOIS FED. AID PROJECT				

Existing Structure: S.N. 082-0007 was built in 1965 as a curved three-span continuous steel beam bridge. The structure has a back-to-back abutment length of 187'-0 1/2" and the width is 43'-2" out to out of deck. In 1996 the concrete bridge deck, bearings and wingwalls were removed and replaced. Existing deck is 7 1/2" thick composite.

Construction Staging: Not required. I-55/64 EB will be closed during the repair work. Traffic shifted to C-D lanes, the two outside eastbound lanes.

No salvage.

SCOPE OF WORK

1. Scarify 3/4" from the bridge deck and approach slab.
2. Full and Partial Depth Repairs to bridge deck.
3. Construct Concrete Superstructure.
4. Apply 3" Latex Concrete Overlay on bridge deck and HMA Overlay on approach slabs (See Roadway Plans).
5. Install Preformed Joint Seal.

INDEX OF SHEETS

1. General Plan and Elevation
2. Typical Cross Section
3. Bridge Deck & Approach Slabs Overlay & Repairs
4. Abutment Expansion Joint Repairs
5. Abutment Expansion Joint Details

TOTAL BILL OF MATERIAL

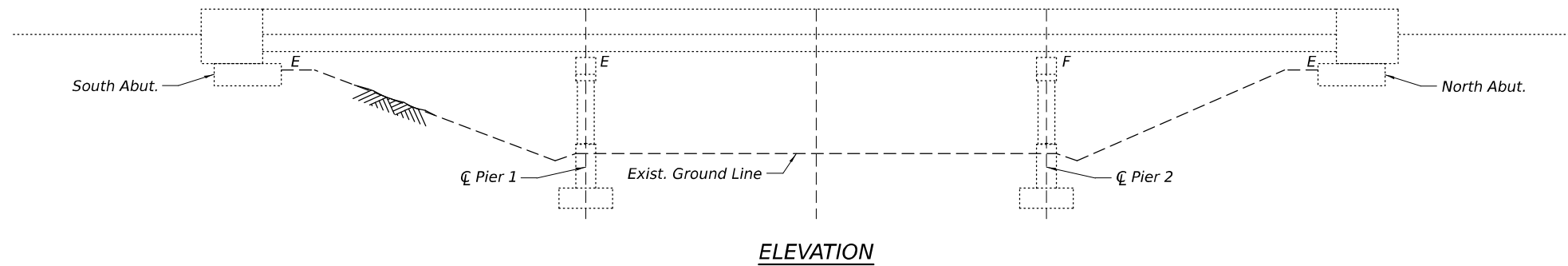
ITEM	UNIT	TOTAL
Concrete Removal	Cu Yd	5.7
Concrete Superstructure	Cu Yd	5.3
Reinforcement Bars, Epoxy Coated	Pound	1,150
Preformed Joint Seal 4"	Foot	91.0
Deck Slab Repair (Partial)	Sq Yd	50
Deck Slab Repair (Full Depth, Type II)	Sq Yd	50
Bridge Deck Scarification 3/4"	Sq Yd	990
Bridge Deck Latex Concrete Overlay, 3"	Sq Yd	843

LOADING HS20-44
No future wearing surface allowed.
DESIGN SPECIFICATIONS

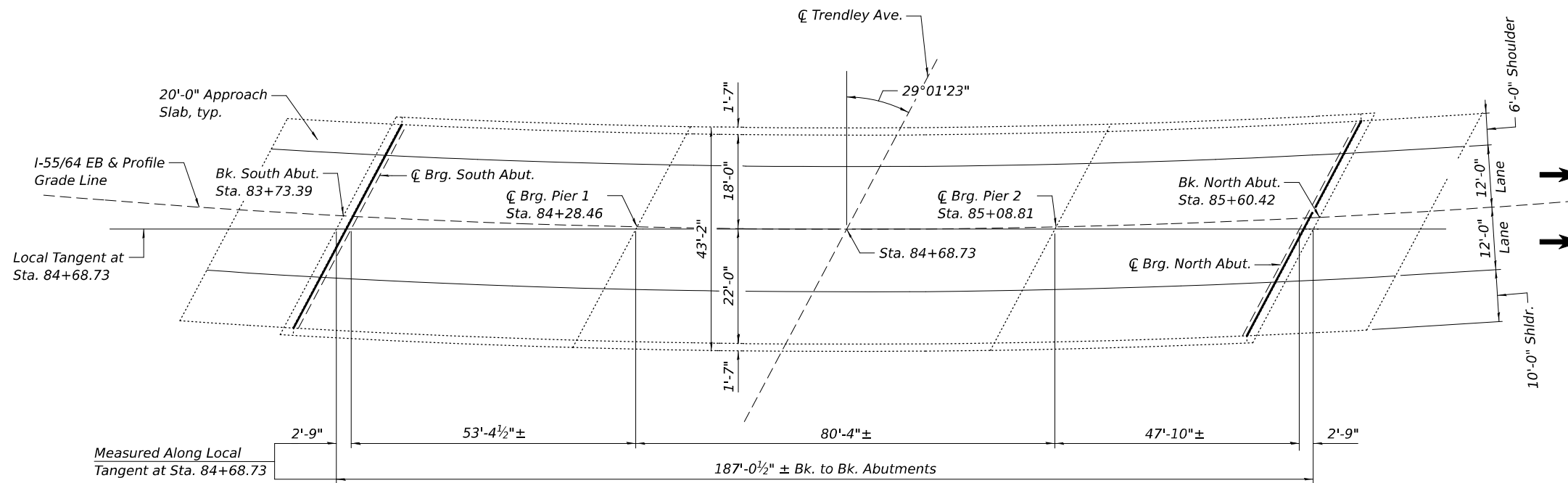
SUBSTRUCTURE
1961 AASHO and Applicable
1962 and 1963 Interims
SUPERSTRUCTURE
1992 AASHTO Standard
Specifications for Highway
Bridges

DESIGN STRESSES

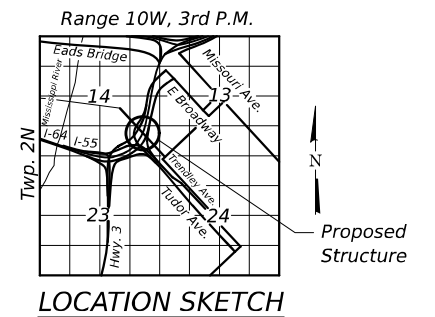
FIELD UNITS
f_c = 4,000 psi (Superstructure)
f_y = 60,000 psi (Reinforcement)
EXISTING UNITS
f_c = 3,500 psi (Superstructure)
f_y = 60,000 psi (Reinforcement)



ELEVATION



PLAN



GENERAL PLAN & ELEVATION
I-55/64 EB OVER TRENDLEY AVENUE
F.A.I. ROUTE 70 - SEC. 82-3HVB-2R-2-4
ST CLAIR COUNTY
STATION 84+68.73
STRUCTURE NO. 082-0007

MODEL: Bk. Sheet - Cons. Print
FILE NAME: W:\1915-2-4 - DOT_214049_T03_15584.corr.Trendley\CADD_Sheets\Structure\0820007-2076176401-CRPE.dgn



USER NAME = mwoller	DESIGNED - MTW	REVISED -
	CHECKED - MJW	REVISED -
PLOT SCALE = 02" = 1'-0"	DRAWN - MTW	REVISED -
PLOT DATE = 5/5/2026	CHECKED - MJW	REVISED -

STATE OF ILLINOIS
DEPARTMENT OF TRANSPORTATION

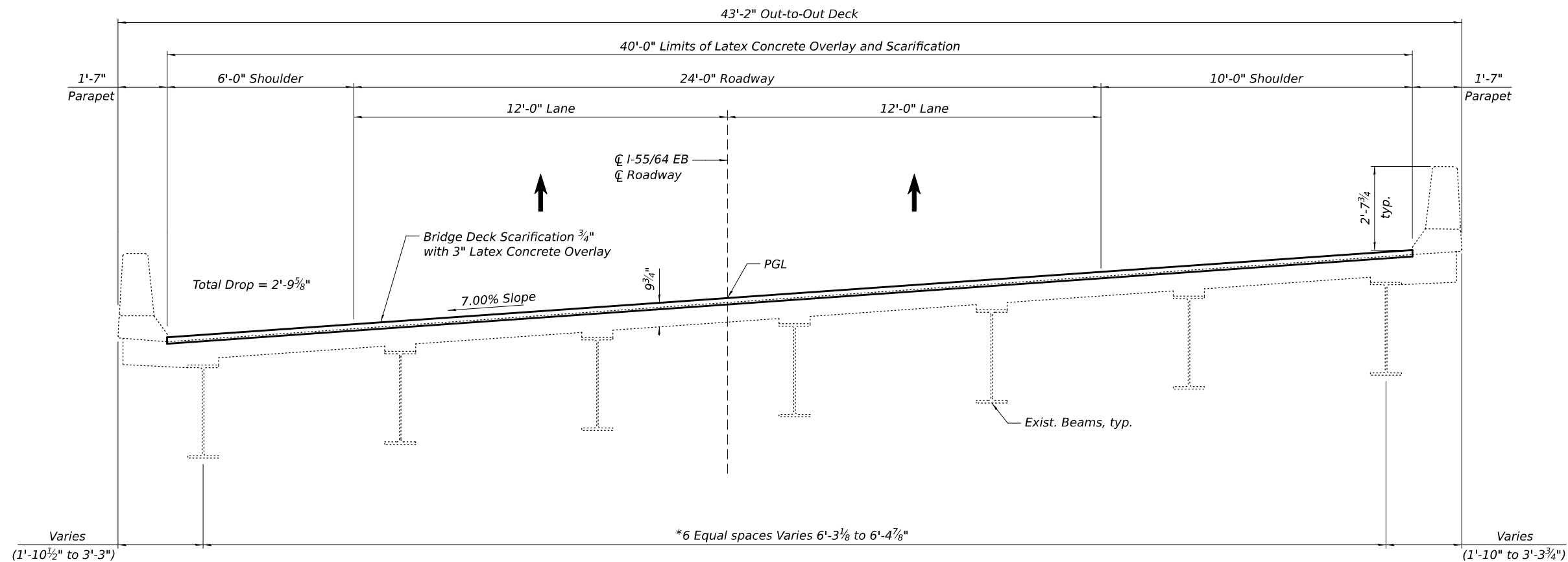
GENERAL PLAN AND ELEVATION
STRUCTURE NO. 082-0007

SHEET 1 OF 5 SHEETS

F.A.I. RTE.	SECTION	COUNTY	TOTAL SHEETS	SHEET NO.
70	82-3HVB-2R-2-4	ST CLAIR	14	10
CONTRACT NO. 76U76				
ILLINOIS FED. AID PROJECT				

GENERAL NOTES:

1. Reinforcement bars designated (E) shall be epoxy coated.
2. Plan dimensions and details relative to existing structure have been taken from existing plans subject to nominal construction variations. The contractor shall field verify existing dimensions and details affecting new construction and make necessary approved adjustments prior to construction of ordering materials. Such variations shall not be cause for additional compensation for a change in scope of the work, however, the Contractor will be paid for the quantity actually furnished based at the unit price bid for the work.
3. Existing reinforcement bars extending into the removal area shall be cleaned, straightened and incorporated into the new construction. Any reinforcement bars that are damaged during concrete removal shall be replaced with an approved bar splicer or anchorage system at no additional cost to the Department.
4. Areas of deck repairs shown are estimated. The Engineer shall show actual locations and size of deck repairs on As-built Plans.
5. The deck surface shall have its final finish tined according to Article 420.09(e)(1) of the Standard Specifications. Cost included with Concrete Superstructure.
6. Joint openings shall be adjusted according to Article 520.04 of the Std. Specs. when the deck is poured at an ambient temperature other than 50° F.



CROSS SECTION
(Looking North)

* Measured perpendicular to beams

MODEL: B:\Sheet_Cross_Section.dwg
 FILE NAME: Y:\191524 DOT_21404_T03_15544 conr_Trendley\CADD_Sheets\Structure\082000\2076717c-002-Typical_Cross_Section.dwg
 5/1/2026 3:30:39 PM



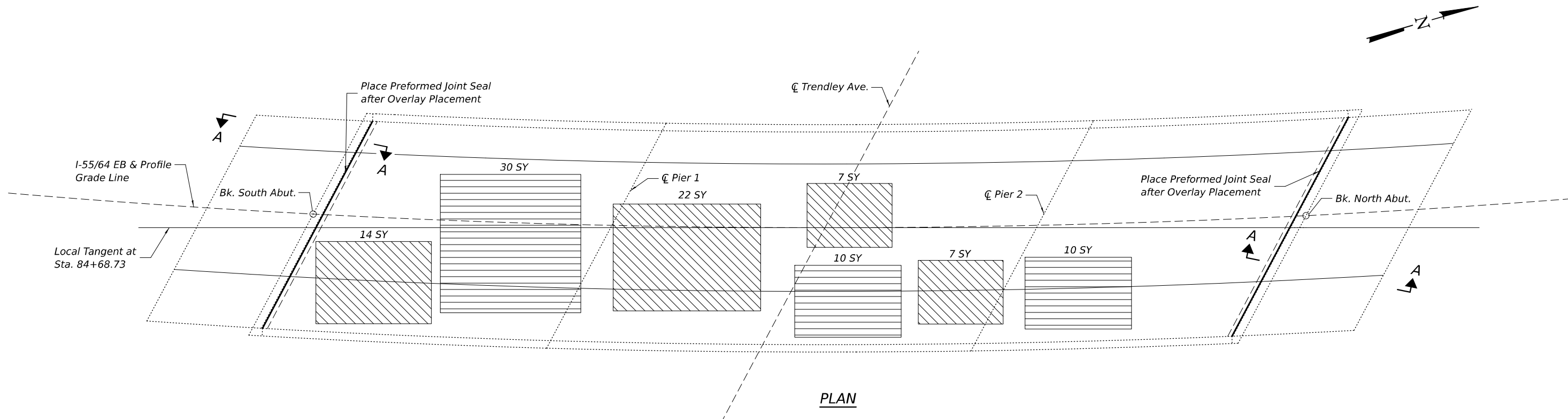
USER NAME = mwooller	DESIGNED - MTW	REVISED -
PLOT SCALE = 02" = 1'	CHECKED - MJW	REVISED -
PLOT DATE = 5/1/2026	DRAWN - MTW	REVISED -
	CHECKED - MJW	REVISED -

STATE OF ILLINOIS
DEPARTMENT OF TRANSPORTATION

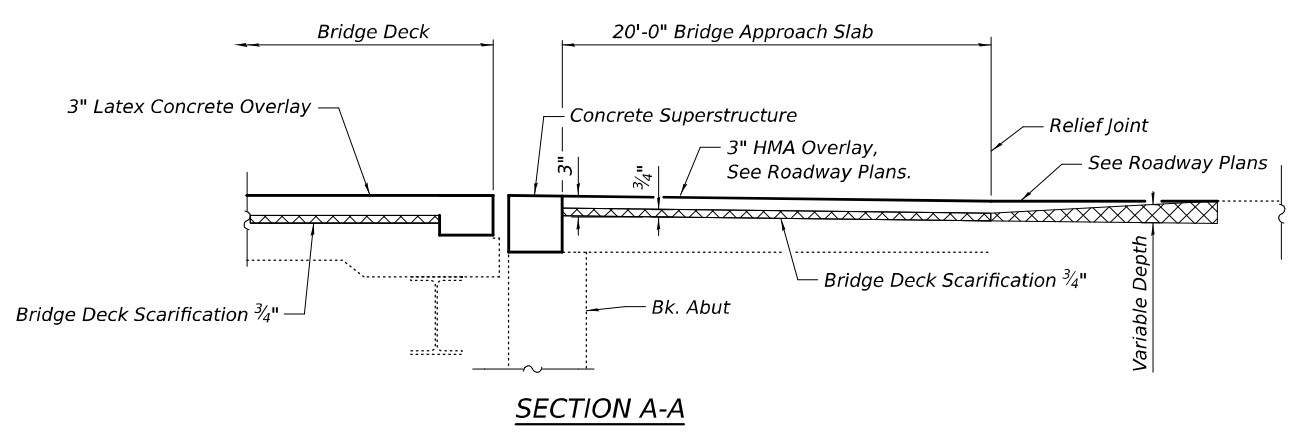
TYPICAL CROSS SECTION
STRUCTURE NO. 082-0007

SHEET 2 OF 5 SHEETS

F.A.I. RTE.	SECTION	COUNTY	TOTAL SHEETS	SHEET NO.
70	82-3HVB-2R-2-4	ST CLAIR	14	11
CONTRACT NO. 76U76				
ILLINOIS FED. AID PROJECT				



PLAN



SECTION A-A

LEGEND

- Deck Slab Repair (Partial Depth)
- Deck Slab Repair (Full Depth, Type II)

BILL OF MATERIAL

ITEM	UNIT	TOTAL
Preformed Joint Seal 4"	Foot	91.0
Deck Slab Repair (Partial Depth)	Sq Yd	50
Deck Slab Repair (Full Depth, Type II)	Sq Yd	50

MODEL: B:\Sheet_Cover\Sheet.dwg
 FILE NAME: W:\191524\DOT_214049_T03_15584.cvr
 Trendley\CADD_Sheets\Structure\082000-207617c-00-84\Bldg_Deck & Approach Slabs Overlay & Repairs.dgn
 5/1/2026 3:30:41 PM



USER NAME = mwooller	DESIGNED - MTW	REVISED -
PLOT SCALE = 02" = 1'	CHECKED - MJW	REVISED -
PLOT DATE = 5/1/2026	DRAWN - MTW	REVISED -
	CHECKED - MJW	REVISED -

STATE OF ILLINOIS
DEPARTMENT OF TRANSPORTATION

BRIDGE DECK & APPROACH SLABS OVERLAY & REPAIRS
STRUCTURE NO. 082-0007

SHEET 3 OF 5 SHEETS

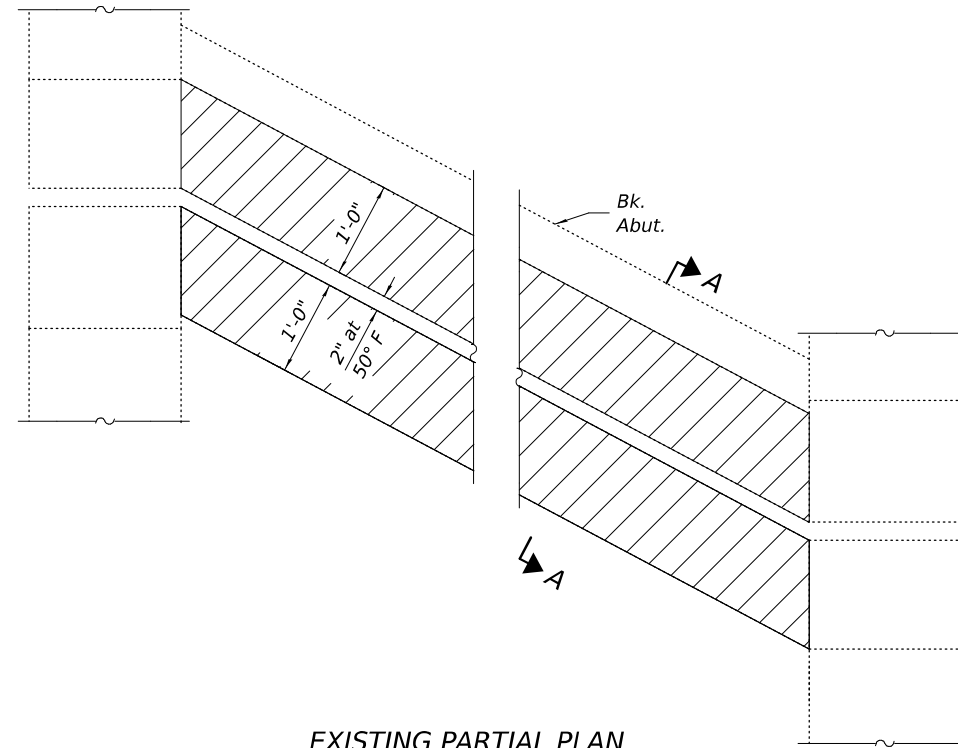
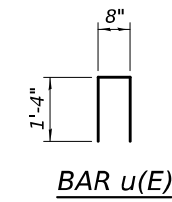
F.A.I. RTE.	SECTION	COUNTY	TOTAL SHEETS	SHEET NO.
70	82-3HVB-2R-2-4	ST CLAIR	14	12
CONTRACT NO. 76U76				
ILLINOIS FED. AID PROJECT				

BILL OF MATERIAL

Bar	No.	Size	Length	Shape
a(E)	8	#7	26'-1"	—
h(E)	16	#5	24'-7"	—
u(E)	90	#5	3'-4"	⊏
Concrete Superstructure			Cu. Yd.	5.3
Reinforcement Bars, Epoxy Coated			Pound	1,150

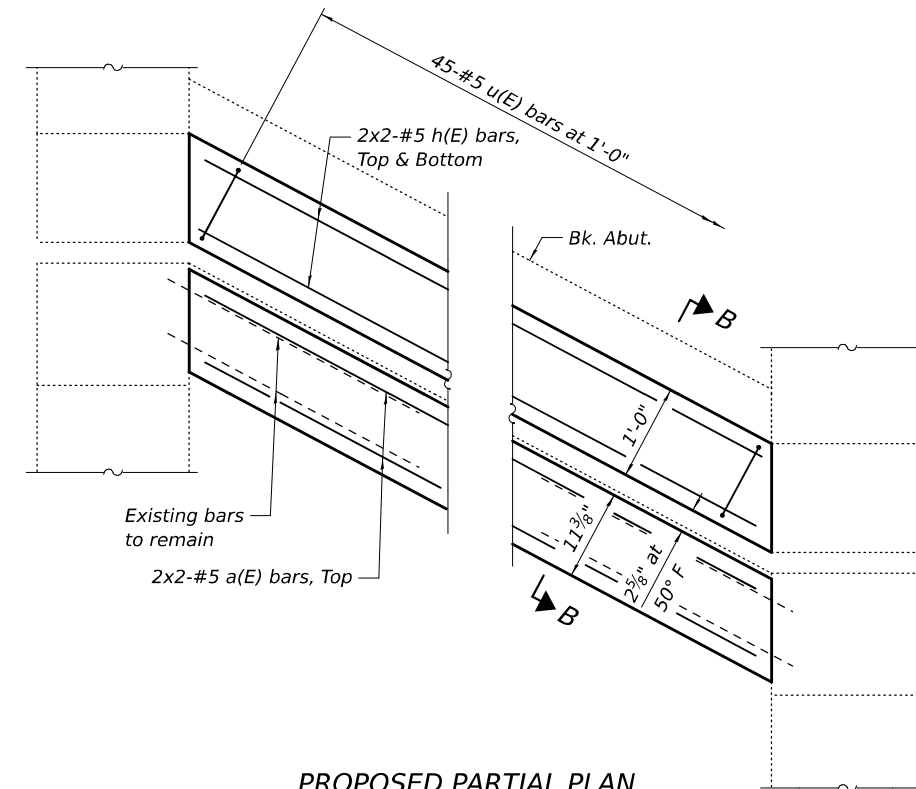
MINIMUM BAR LAP

#5 bar = 3'-10"
#7 bar = 6'-10"



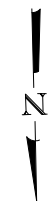
EXISTING PARTIAL PLAN

(South Abutment Shown)
(North Abutment Similar)



PROPOSED PARTIAL PLAN

(South Abutment Shown)
(North Abutment Similar)



LEGEND

Concrete Removal

Notes:
See sheet 5 of 5 for Sections A-A and B-B.

Bars indicated thus 20 x 3-#5 indicates 20 lines of bars with 3 lengths per line.

MODEL: B:\Sheet_Cover\Bldg...
 FILE NAME: W:\191524 DOT_214049_T03_15584 covr_Trenday\CADD_Sheets\Structure\082000-207617c-04-Abutment Expansion Joint Repair.dgn



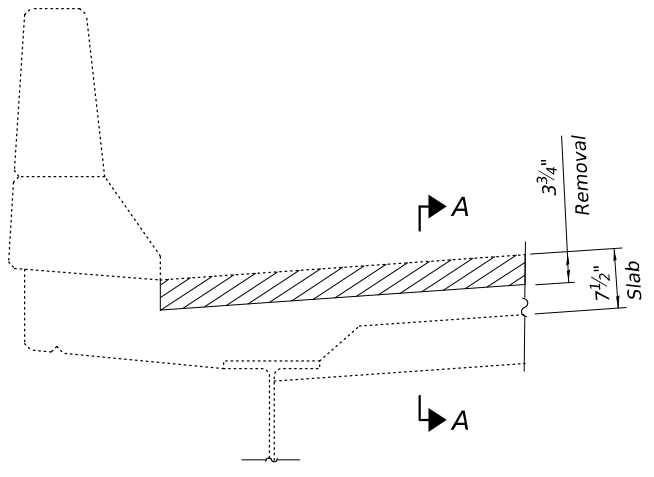
USER NAME = mwoller	DESIGNED - MTW	REVISED -
PLOT SCALE = 02'"/ft.	CHECKED - MJW	REVISED -
PLOT DATE = 5/1/2026	DRAWN - MTW	REVISED -
	CHECKED - MJW	REVISED -

**STATE OF ILLINOIS
DEPARTMENT OF TRANSPORTATION**

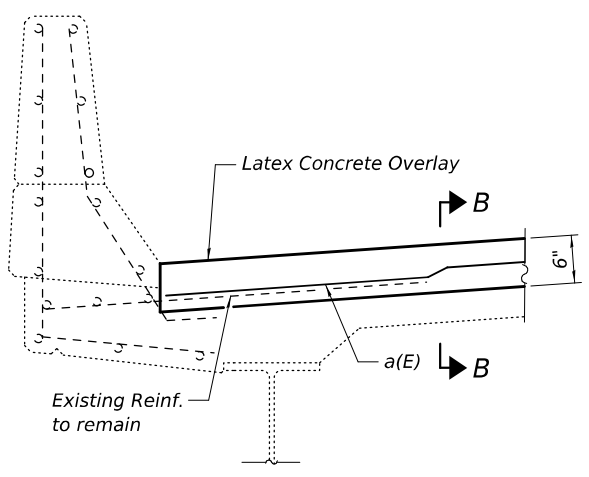
**ABUTMENT EXPANSION JOINT REPAIRS
STRUCTURE NO. 082-0007**

SHEET 4 OF 5 SHEETS

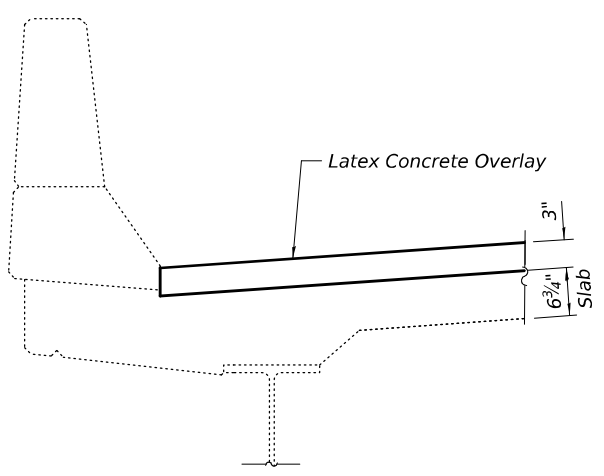
F.A.I. RTE.	SECTION	COUNTY	TOTAL SHEETS	SHEET NO.
70	82-3HVB-2R-2-4	ST CLAIR	14	13
CONTRACT NO. 76U76				
ILLINOIS FED. AID PROJECT				



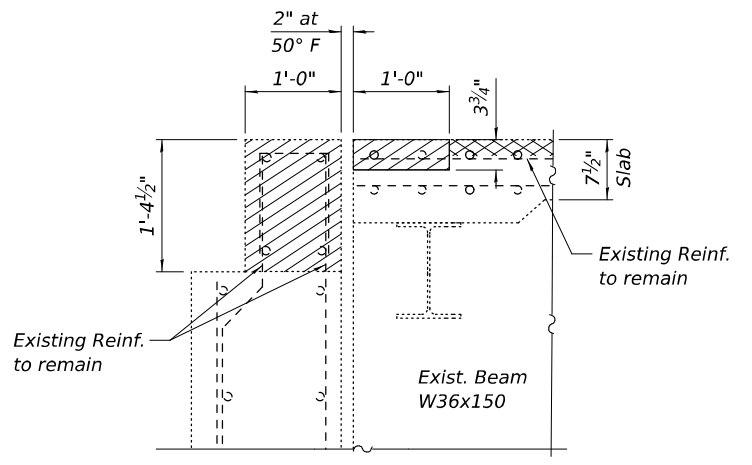
SECTION THRU DECK REMOVAL AT JOINT



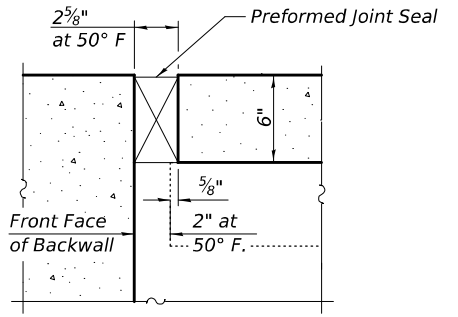
SECTION THRU PROPOSED DECK AT JOINT



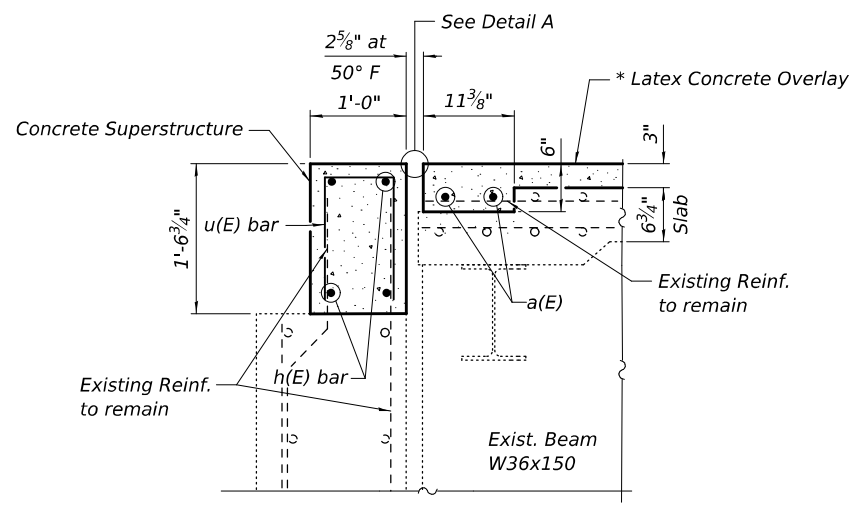
SECTION THRU PROPOSED DECK



SECTION A-A



DETAIL A



SECTION B-B

LEGEND

- Concrete Removal
- Bridge Deck Scarification 3/4"

BILL OF MATERIAL

ITEM	UNIT	TOTAL
* Bridge Deck Latex Concrete Overlay, 3"	Sq Yd	843

*The quantity of 3" Latex Concrete Overlay has been increased by 9 Sq. Yd. to account for the additional depth of 3" of Latex Concrete Overlay at each joint.

Notes:
 Existing reinforcement bars in the concrete removal area parallel to the expansion joints shall be removed in the deck only.
 Removal and disposal of the existing expansion joints will not be paid for separately, but shall be included with the cost of Concrete Removal.

MODEL: B:\Sheet_Cover\Bldg...
 FILE NAME: W:\191524\DOT_214049_T03_15584.cvr; Trench\CAD\Sheet\Structural\082000-207617-4-05-Abutment Expansion Joint Details.dgn
 5/1/2026 3:30:47 PM



USER NAME = mwoller	DESIGNED - MTW	REVISED -
PLOT SCALE = 02'"/ft.	CHECKED - MJW	REVISED -
PLOT DATE = 5/1/2026	DRAWN - MTW	REVISED -
	CHECKED - MJW	REVISED -

**STATE OF ILLINOIS
 DEPARTMENT OF TRANSPORTATION**

**ABUTMENT EXPANSION JOINT DETAILS
 STRUCTURE NO. 082-0007**

SHEET 5 OF 5 SHEETS

F.A.I. RTE.	SECTION	COUNTY	TOTAL SHEETS	SHEET NO.
70	82-3HVB-2R-2-4	ST CLAIR	14	14
CONTRACT NO. 76U76				
ILLINOIS FED. AID PROJECT				