

**STATE OF ILLINOIS
DEPARTMENT OF TRANSPORTATION**

F.A. RTE.	SECTION	COUNTY	TOTAL SHEETS	SHEET NO.
VAR		ILLINOIS	6	1

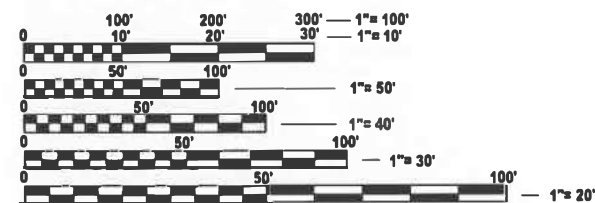
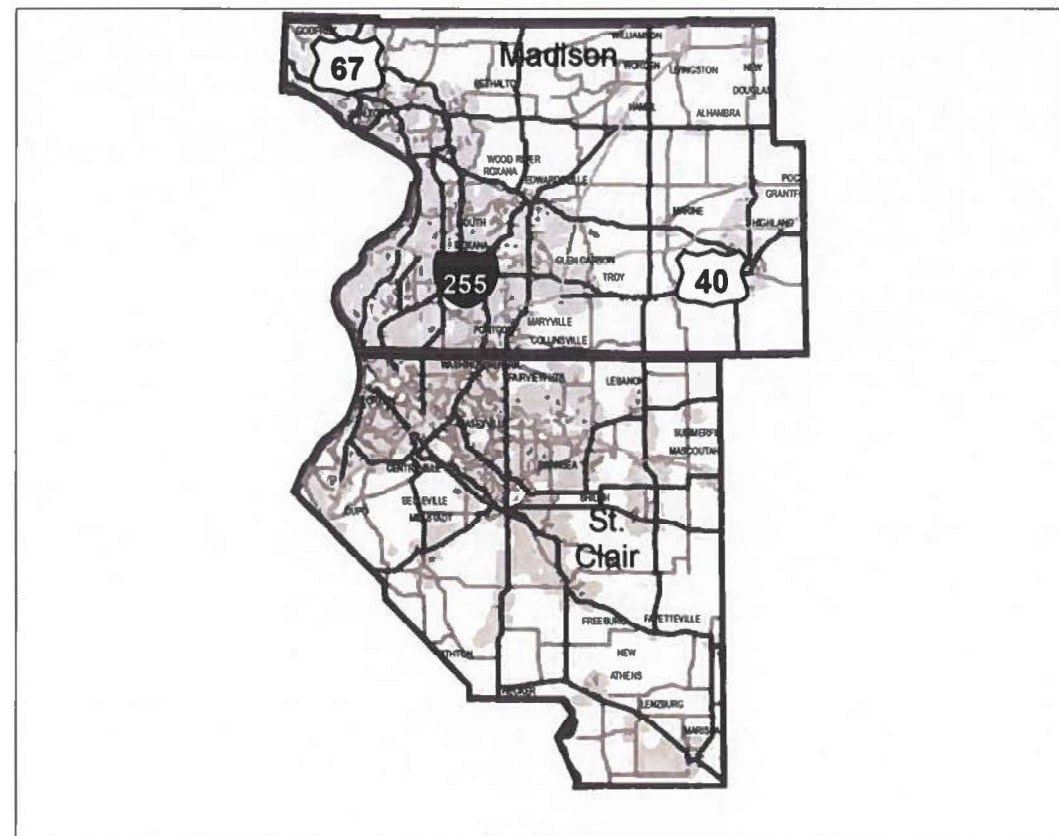
CONTRACT NO. 76U81
*DIST 8 BRIDGE CLEANING 2026-1
**MADISON & ST. CLAIR

FOR INDEX OF SHEETS, SEE SHEET NO. 2

PROPOSED HIGHWAY PLANS

**VARIOUS ROUTES (VARIOUS)
SECTION: DIST 8 BRIDGE CLEANING 2026-1
PROJECT NHPP-ET65(333)
BRIDGE CLEANING
MADISON, ST. CLAIR COUNTY**

C-98-145-25



FULL SIZE PLANS HAVE BEEN PREPARED USING STANDARD ENGINEERING SCALES. REDUCED SIZED PLANS WILL NOT CONFORM TO STANDARD SCALES. IN MAKING MEASUREMENTS ON REDUCED PLANS, THE ABOVE SCALES MAY BE USED.

**J.U.L.I.E.
JOINT UTILITY LOCATION INFORMATION FOR EXCAVATION
1-800-892-0123
OR 811**

**PROJECT ENGINEER: BILLIE OWEN
PROJECT MANAGER: MIKE BERG**

CONTRACT NO. 76U81

**STATE OF ILLINOIS
DEPARTMENT OF TRANSPORTATION**

SUBMITTED May 10 2026 to [Signature]
REGIONAL ENGINEER

May 8 2026
[Signature]
ENGINEER OF DESIGN AND ENVIRONMENT

May 8 2026
[Signature]
DIRECTOR OF HIGHWAYS PROJECT IMPLEMENTATION

**PRINTED BY THE AUTHORITY
OF THE STATE OF ILLINOIS**

MODEL: SQO (Sheet)
 FILE NAME: c:\p\work\pawfor\miller\140422\76U81-sh-SQO.dgn

CODE NO.	ITEM	UNIT	TOTAL QUANTITY	CONSTRUCTION CODE									
				MADISON	MISSOURI	ST. CLAIR	MISSOURI	ST. CLAIR	ST. CLAIR	ST. CLAIR	ST. CLAIR	ST. CLAIR	
				FED 80/STATE 20	100%	FED 80/STATE 20	100%	FED 80/STATE 20	FED 80/STATE 20	FED 80/STATE 20	FED 80/STATE 20	FED 80/STATE 20	
				BRIDGE	BRIDGE	BRIDGE	BRIDGE	BRIDGE	BRIDGE	BRIDGE	BRIDGE	BRIDGE	
0047	0047	0047	0047	0047	0047	0047	0047	0047					
S.N. 060-0255	S.N. 060-0255	S.N. 082-6001	S.N. 082-6001	S.N. 082-0247	S.N. 082-0248	S.N. 082-0287	S.N. 082-0318	S.N. 082-0319					
59200101	BRIDGE WASHING NO. 1	EACH	1	0.5	0.5								
59200102	BRIDGE WASHING NO. 2	EACH	1			0.5	0.5						
59200103	BRIDGE WASHING NO. 3	EACH	1					1					
59200104	BRIDGE WASHING NO. 4	EACH	1						1				
59200105	BRIDGE WASHING NO. 5	EACH	1							1			
59200106	BRIDGE WASHING NO. 6	EACH	1								1		
59200107	BRIDGE WASHING NO. 7	EACH	1									1	
67100100	MOBILIZATION	L SUM	1	0.11	0.11	0.11	0.11	0.11	0.11	0.11	0.11	0.11	0.12
70100310	TRAFFIC CONTROL AND PROTECTION, STANDARD 701421	L SUM	1					1					
70100320	TRAFFIC CONTROL AND PROTECTION, STANDARD 701422	L SUM	1	0.11	0.11	0.11	0.11	0.11	0.11	0.11	0.11	0.11	0.12
70100420	TRAFFIC CONTROL AND PROTECTION, STANDARD 701411	EACH	1										1
70100700	TRAFFIC CONTROL AND PROTECTION, STANDARD 701406	L SUM	1			1							
70100800	TRAFFIC CONTROL AND PROTECTION, STANDARD 701401	L SUM	1	0.11	0.11	0.11	0.11	0.11	0.11	0.11	0.11	0.11	0.12
70100815	TRAFFIC CONTROL AND PROTECTION, STANDARD 701446	L SUM	1					0.5	0.5				
70100820	TRAFFIC CONTROL AND PROTECTION, STANDARD 701451	L SUM	1							1			

REV - MS

**MADISON & ST. CLAIR
 * DIST 8 BRIDGE CLEANING 2026-1

USER NAME = rahshun.miller	DESIGNED -	REVISED -
	DRAWN -	REVISED -
	CHECKED -	REVISED -
PLOT DATE = 3/17/2026	DATE -	REVISED -

**STATE OF ILLINOIS
 DEPARTMENT OF TRANSPORTATION**

SUMMARY OF QUANTITIES

SCALE: NTS SHEET 1 OF 2 SHEETS STA. TO STA.

F.A. RTE.	SECTION	COUNTY	TOTAL SHEETS	SHEET NO.
VAR	*	**	6	3
CONTRACT NO. 76U81				
ILLINOIS FED. AID PROJECT				

MODEL: Schedule (Sheet)
 FILE NAME: c:\p\work\wisdom\miller\rd1140422\76U81-sht-Schedule.dgn

HIGHWAY STANDARDS									
STRUCTURE NUMBER	701400	701401	701406	701411	701421	701422	701446	701451	701456
MADISON									
BRIDGE NO.1 060-0255						X			
ST. CLAIR									
BRIDGE NO.2 082-6001					X	X			X
BRIDGE NO.3 082-0247	X	X	X				X		
BRIDGE NO.4 082-0248	X	X	X				X		
BRIDGE NO.5 082-0287	X	X			X	X		X	X
BRIDGE NO.6 082-0318	X	X	X						X
BRIDGE NO.7 082-0319	X	X	X	X					X

USER NAME = rahshun.miller	DESIGNED -	REVISED -
	DRAWN -	REVISED -
	CHECKED -	REVISED -
PLOT DATE = 4/29/2026	DATE -	REVISED -

**STATE OF ILLINOIS
 DEPARTMENT OF TRANSPORTATION**

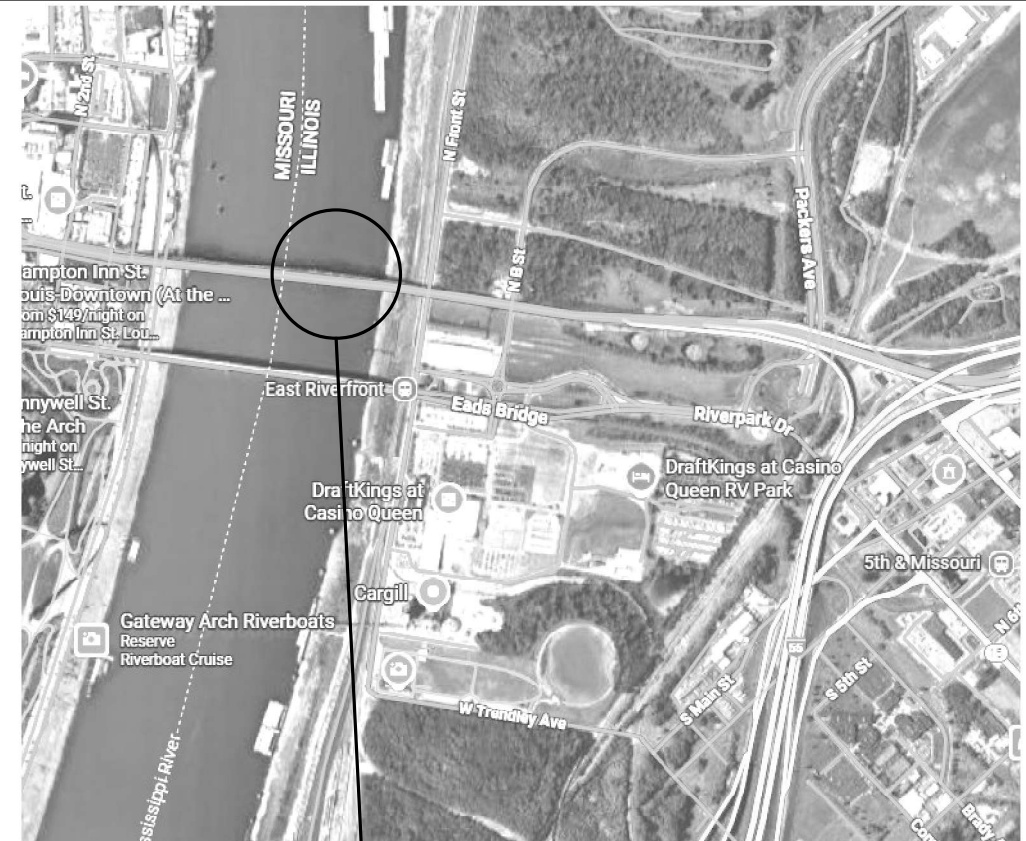
SCHEDULE OF QUANTITIES			
SCALE: NTS	SHEET 1	OF 1	SHEETS
	STA.	TO STA.	

F.A. RTE.	SECTION	COUNTY	TOTAL SHEETS	SHEET NO.
VAR	*	**	6	5
CONTRACT NO. 76U81				
ILLINOIS		FED. AID PROJECT		

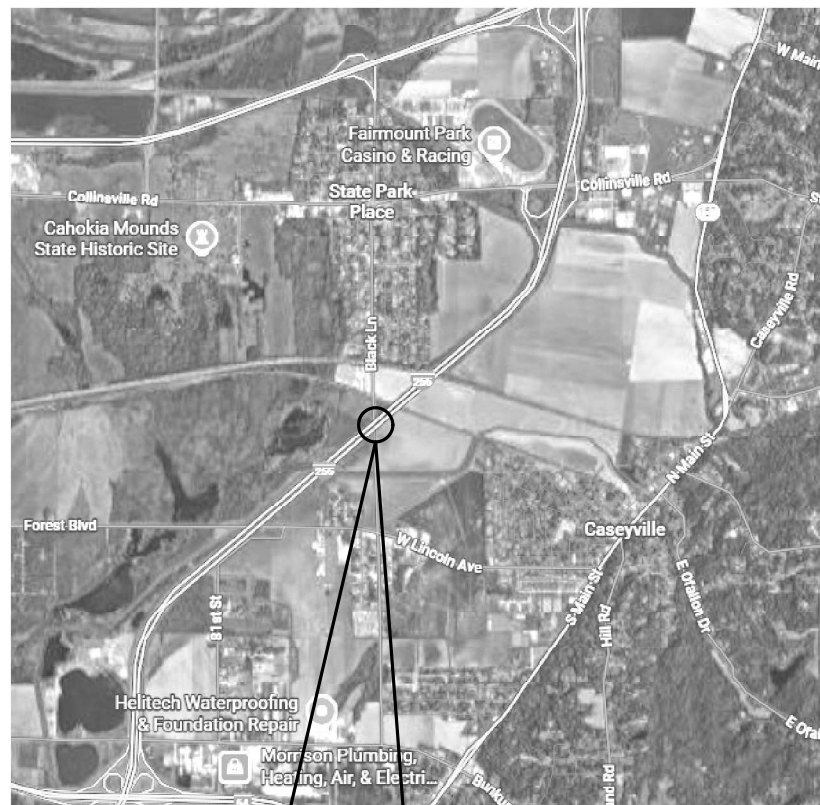
**MADISON & ST. CLAIR
 *DISTRICT 8 BRIDGE CLEANING 2026-1



#1. S.N. 060-0255 US 67 OVER MISSISSIPPI RIVER AND NSRR

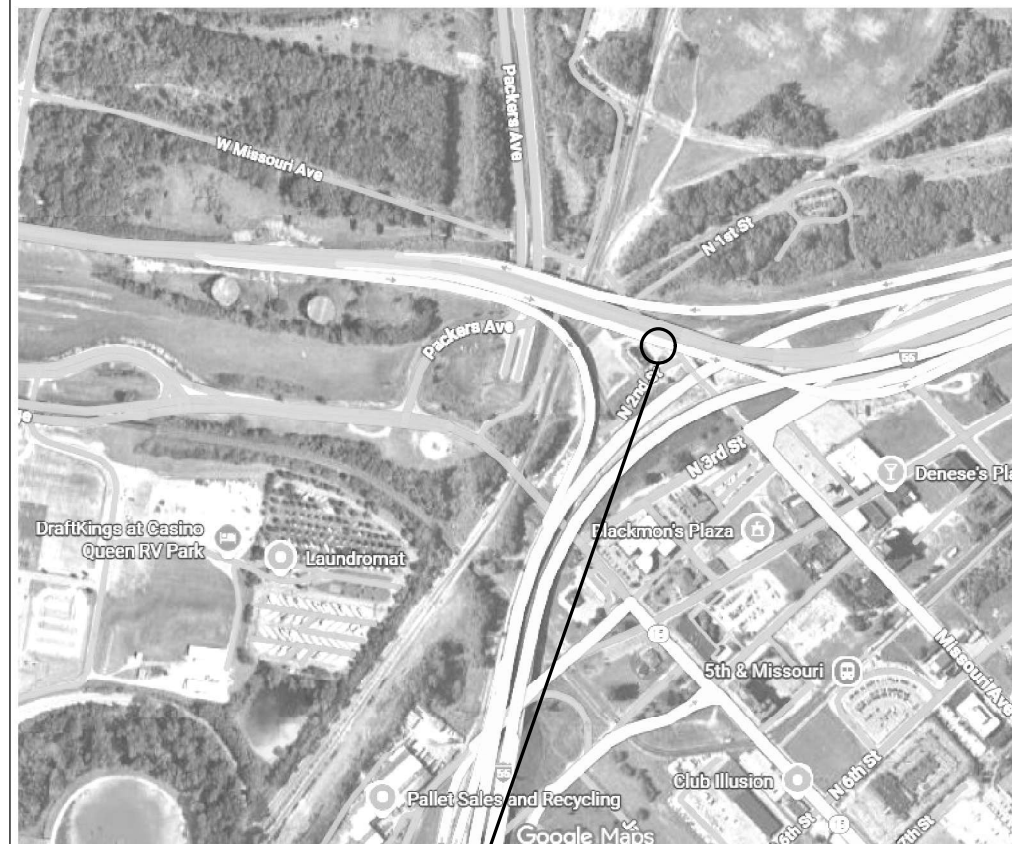


#2. S.N. 082-6001 MLK BRIDGE OVER MISSISSIPPI RIVER, TRRA, N. FRONT ST.

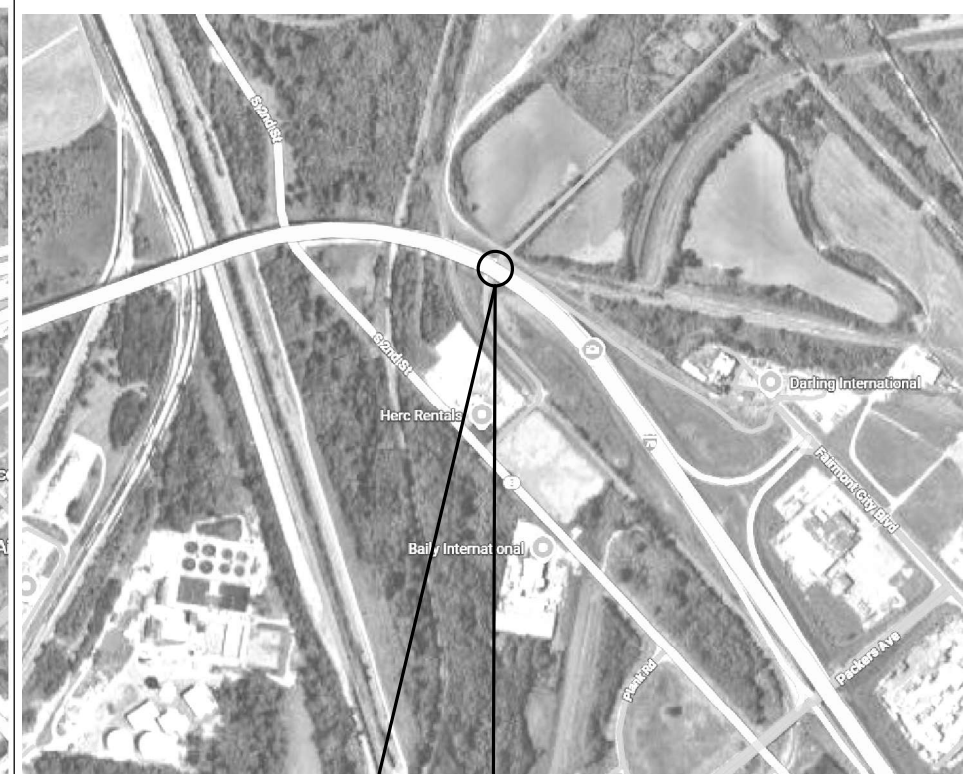


#3. S.N. 082-0247 | 255 SB OVER BLACK LANE, CSXRR

#4. S.N. 082-0248 | 255 NB OVER BLACK LANE, CSXRR



#5. S.N. 082-0287 MKL RAMP 1 EB OVER IL3, TRRA, UPRR



#6. S.N. 082-0318 | 70 EB OVER NSRR, TRRA, INDUSTRIAL DR.

#7. S.N. 082-0319 | 70 WB OVER NSRR, TRRA, INDUSTRIAL DR.

MODEL: Detail Sheet [Sheet]
FILE NAME: c:\p\work\miller\ra1140422\76U81-sht-Details.dgn

USER NAME = rahshun.miller	DESIGNED -	REVISED -
	DRAWN -	REVISED -
	CHECKED -	REVISED -
PLOT DATE = 3/17/2026	DATE -	REVISED -

**STATE OF ILLINOIS
DEPARTMENT OF TRANSPORTATION**

LOCATION MAP

SCALE: NTS SHEET 1 OF 1 SHEETS STA. TO STA.

F.A. RTE.	SECTION	COUNTY	TOTAL SHEETS	SHEET NO.
VAR	*	**	6	6
CONTRACT NO. 76U81				
ILLINOIS FED. AID PROJECT				

** MADISON & ST. CLAIR
DIST 8 BRIDGE CLEANING 2026-1