

STATE OF ILLINOIS
DEPARTMENT OF TRANSPORTATION

F.A.P. RTE.	SECTION	COUNTY	TOTAL SHEETS	SHEET NO.
2	103P	MADISON	9	1
		ILLINOIS	CONTRACT NO. 76U86	

FOR INDEX OF SHEETS, SEE SHEET NO. 2

TRAFFIC DATA

SN 060-0193 (NB)
2023 ADT = 6600 (ACTUAL)
2026 ADT = 6800 (ESTIMATED)
2046 ADT = 8300 (ESTIMATED)
SU = 6.4% MU = 13.6%

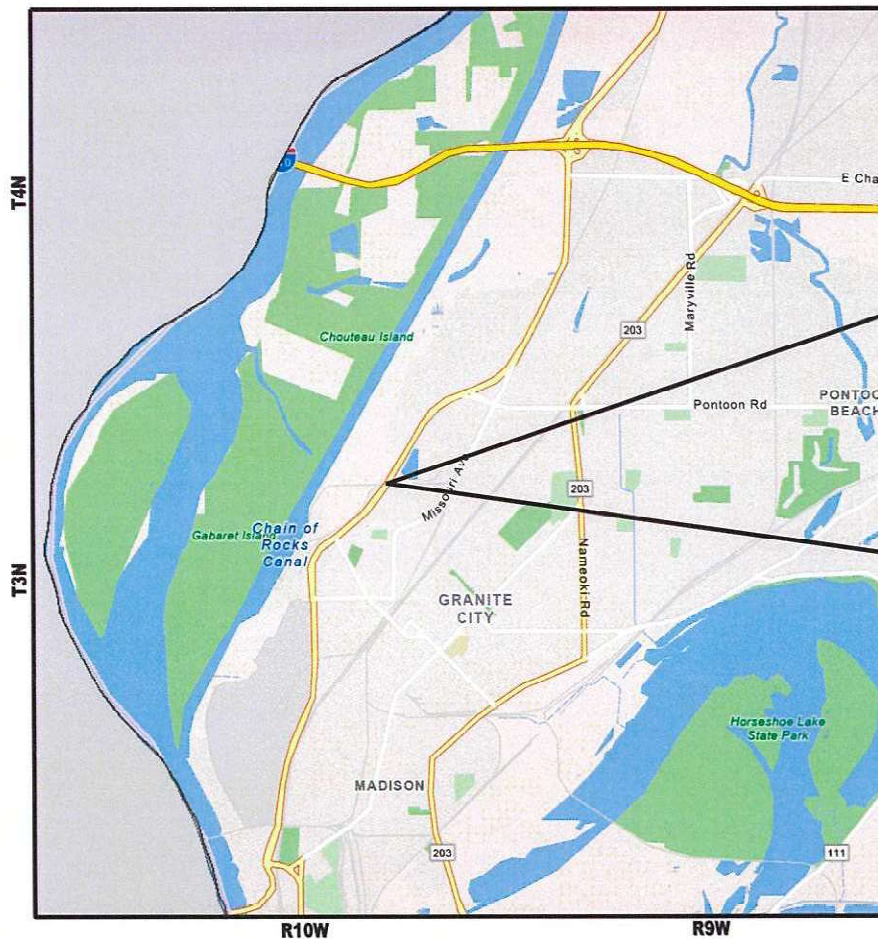
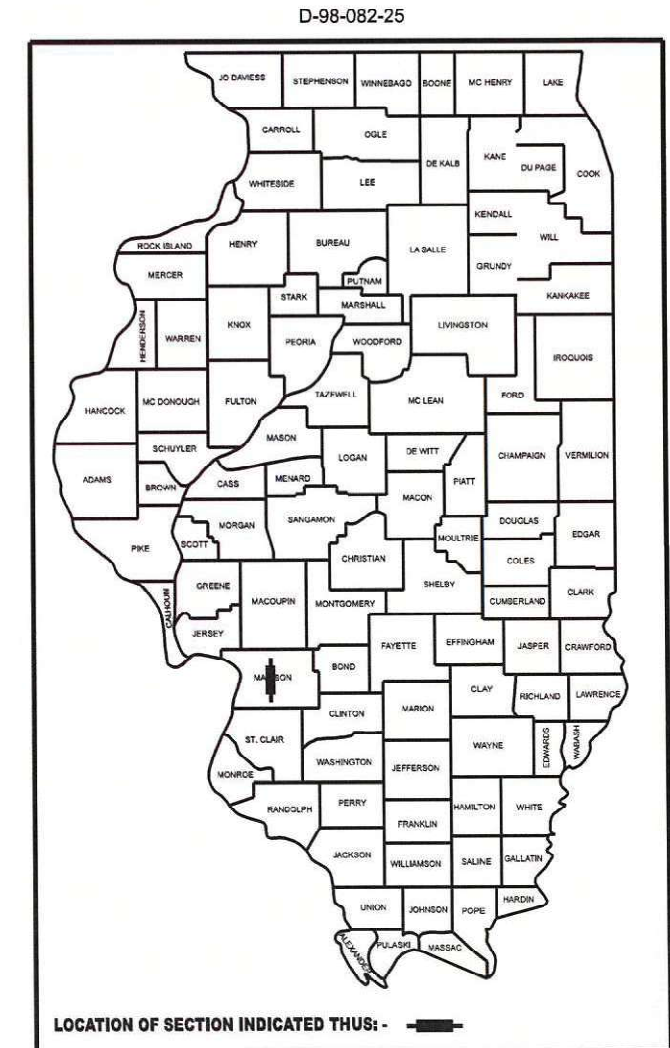
SN 060-0194 (SB)
2023 ADT = 6400 (ACTUAL)
2026 ADT = 6600 (ESTIMATED)
2046 ADT = 8000 (ESTIMATED)
SU = 3.9% MU = 14.1%

NORFOLK SOUTHERN RAILROAD
DOT #3280455
M.P. 11.44
DIVISION: ILLINOIS

**PROPOSED
HIGHWAY PLANS**

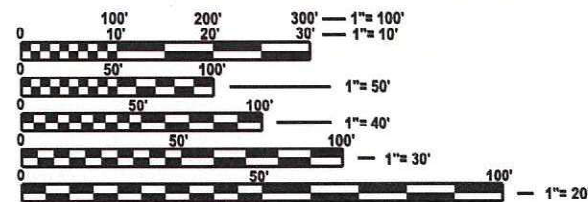
**FAP ROUTE 2 (IL 3)
SECTION 103P
PROJECT NHPP-IJPK(592)
BRIDGE PAINTING
MADISON COUNTY**

C-98-150-25



BRIDGE NO. 1
SN 060-0193 (NB)
IL 3 OVER NSRR
LAT: 38.721578
LONG: -90.155490

BRIDGE NO. 2
SN 060-0193 (SB)
IL 3 OVER NSRR
LAT: 38.721440
LONG: -90.155618



FULL SIZE PLANS HAVE BEEN PREPARED USING STANDARD ENGINEERING SCALES. REDUCED SIZED PLANS WILL NOT CONFORM TO STANDARD SCALES. IN MAKING MEASUREMENTS ON REDUCED PLANS, THE ABOVE SCALES MAY BE USED.

J.U.L.I.E.
JOINT UTILITY LOCATION INFORMATION FOR EXCAVATION
1-800-892-0123
OR 811

PROJECT ENGINEER: BILLIE OWEN, P.E.
PROJECT MANAGER: MIKE BERG, P.E.

CONTRACT NO. 76U86

GROSS LENGTH = 356.00 FT. = 0.07 MILE
NET LENGTH = 356.00 FT. = 0.07 MILE
NOT TO SCALE

STATE OF ILLINOIS
DEPARTMENT OF TRANSPORTATION

SUBMITTED *May 20 2026*

[Signature]
REGIONAL ENGINEER

May 8 2026
[Signature]
ENGINEER OF DESIGN AND ENVIRONMENT

May 8 2026
[Signature]
DIRECTOR OF HIGHWAYS PROJECT IMPLEMENTATION

**PRINTED BY THE AUTHORITY
OF THE STATE OF ILLINOIS**

INDEX OF SHEETS

1. COVER SHEET
2. INDEX OF SHEETS, HIGHWAY STANDARDS, GENERAL NOTES, AND COMMITMENTS
3. SUMMARY OF QUANTITIES
- 4-9. STRUCTURES DETAILS SN 060-0193 & SN 060-0194

HIGHWAY STANDARDS

- 000001-09 STANDARD SYMBOLS, ABBREVIATIONS AND PATTERNS
 001006 DECIMAL OF AN INCH AND OF A FOOT
 701423-10 LANE MULTILANE, WITH BARRIER, FOR SPEEDS > 45 MPH TO 55 MPH
 701901-11 TRAFFIC CONTROL DEVICES

GENERAL NOTES

1. UTILITIES KNOWN TO HAVE FACILITIES WITHIN THE PROJECT AREA:

	AERIAL	BURIED
AMEREN ILLINOIS	X	X
AT&T ILLINOIS	X	X
EXPLORER PIPELINE COMPANY		X
CITY OF GRANITE CITY	X	X
LEVEL 3 COMMUNICATIONS, LLC	X	X
MADISON COUNTY		X

2. NO SURVEY WAS PERFORMED FOR THIS PROJECT AND THE PLANS WERE CREATED USING MICROFILM AND FIELD MEASUREMENTS.
3. TWO CHANGEABLE MESSAGE SIGNS SHALL BE REQUIRED FOR THIS PROJECT. THEY SHALL BE PLACED TWO WEEKS PRIOR TO ANY LANE CLOSURE AND SHALL REMAIN UP FOR THE DURATION OF THE PROJECT. LOCATIONS SHALL BE AT THE DIRECTION OF THE RESIDENT ENGINEER.
4. THE RESIDENT ENGINEER SHALL VERIFY THE EXISTENCE OF HIGHWAY LIGHTING, INTELLIGENT TRANSPORTATION SYSTEMS (I.T.S.) UTILITIES, AND/OR ELECTRICAL CABLES ASSOCIATED WITH TRAFFIC SIGNALS WITHIN THE PROJECT LIMITS. IF ANY OF THESE EXIST WITHIN THE PROJECT LIMITS, AND IF THESE ITEMS REQUIRE LOCATING, THE CONTRACTOR SHALL BE DIRECTED TO DO SO ACCORDING TO SECTION 803 OF THE STANDARD SPECIFICATIONS. THIS WORK SHALL BE PAID FOR ACCORDING TO ARTICLE 109.04 OF THE STANDARD SPECIFICATIONS.
5. THE SSPC-QP1 AND SSPC-QP2 CERTIFICATIONS WILL BE REQUIRED FOR THIS CONTRACT.
6. FOR LOCATIONS 1 AND 2, CLEANING AND PAINTING OF THE EXISTING STEEL SHALL BE AS SPECIFIED IN THE SPECIAL PROVISION FOR "CLEANING AND PAINTING EXISTING STEEL STRUCTURES." ALL BEAMS, BEARINGS AND OTHER STRUCTURAL STEEL SHALL BE CLEANED PER NEAR WHITE BLAST CLEANING (SSPC- SP10).
7. FOR LOCATIONS 1 AND 2, THE AREAS CLEANED PER NEAR WHITE BLAST CLEANING SHALL BE PAINTED ACCORDING TO THE REQUIREMENTS OF SYSTEM 1-OZ/E/U. THE COLOR OF THE FINAL FINISH COAT FOR ALL STEEL SURFACES SHALL BE GRAY (MUNSELL NO 5B 7/1).
7. A MINIMUM OF 1 AIR MONITOR WILL BE REQUIRED TO MONITOR ABRASIVE BLASTING OPERATIONS AT THIS SITE. SEE SPECIAL PROVISION FOR "CONTAINMENT AND DISPOSAL OF LEAD PAINT CLEANING RESIDUES".
8. THE DEPARTMENT STRONGLY ENCOURAGES THE PRIME CONTRACTOR AND THEIR APPROVED SUB-CONTRACTORS TO HIRE MINORITY, WOMEN AND DISADVANTAGED INDIVIDUALS FROM ITS FEDERALLY FUNDED HIGHWAY CONSTRUCTION CAREERS TRAINING PROGRAM (HCCTP) TO HELP MEET WORKFORCE AND TRAINEE GOALS. THIS PROGRAM IS TRAINING MINORITIES, WOMEN AND DISADVANTAGED INDIVIDUALS IN HIGHWAY CONSTRUCTION-RELATED SKILLS, E.G., MATH FOR THE TRADES, JOB READINESS, TECHNICAL SKILLS COURSEWORK (CARPENTRY, CONCRETE FLATWORK, BLUEPRINT READING, SITE PLANS, SITE WORK, TOOLS USE, ETC.) AND OSHA 10 HOUR CERTIFICATION, TO PREPARE THEM FOR A CAREER IN THE HIGHWAY CONSTRUCTION TRADES. GRADUATES ARE WELL-TRAINED AND READY TO BECOME PRODUCTIVE ENTRY-LEVEL CONSTRUCTION WORKERS. CONTACT THE DISTRICT 8 EEO OFFICE AT 618-346-3360 AND/OR THE HCCTP COORDINATOR AT 618-874-6528 TO LEARN MORE ABOUT THE PROGRAM AND FOR ASSISTANCE IN MEETING WORKFORCE AND TRAINEE GOALS.
9. ALL TURF DISTURBED BY THE CONTRACTOR SHALL BE SEEDED WITH THE APPROPRIATE EROSION CONTROL, AS DIRECTED BY THE ENGINEER, AT THE CONTRACTOR'S EXPENSE.
10. NORFOLK SOUTHERN RR CONTACT: JAKE WATSON
 ENGINEER PUBLIC IMPROVEMENTS (DE, IL, MD, NC, VA & WV)
 NORFOLK SOUTHERN CORPORATION
 650 WEST PEACHTREE STREET, NW BOX 45
 ATLANTA, GA 30308
 (470) 476-6778 (O)
 HYPERLINK "MAILTO:JACOB.WATDSON@NSCORP.COM" JACOB.WATSON@NSCORP.COM

COMMITMENTS

NONE

MODEL: GEN NOTES (Sheet)
 FILE NAME: c:\pwworking\dmurray\1155734.D876\86-shi-gennotes.dgn

REV - MS

USER NAME = Diana.Murray	DESIGNED -	REVISED -	STATE OF ILLINOIS DEPARTMENT OF TRANSPORTATION	INDEX OF SHEETS, HIGHWAY STANDARDS, GENERAL NOTES, AND COMMITMENTS	F A P RTE	SECTION	COUNTY	TOTAL SHEETS	SHEET NO	
	DRAWN -	REVISED -			2	103P	MADISON	9	2	
	CHECKED -	REVISED -			CONTRACT NO. 76U86					
PLOT DATE = 3/21/2026	DATE -	REVISED -			SCALE:	SHEET 1	OF 1	SHEETS	STA.	TO STA.

CODE NO.	ITEM	UNIT	TOTAL QUANTITY	CONSTRUCTION CODE	
				FED/STATE 80/20	FED/STATE 80/20
				BRIDGE 0047	BRIDGE 0047
				060-0193	060-0194
67100100	MOBILIZATION	L SUM	1	0.5	0.5
70100325	TRAFFIC CONTROL AND PROTECTION, STANDARD 701423	EACH	2	1	1
70107025	CHANGEABLE MESSAGE SIGN	CAL DA	112	56	56
70400100	TEMPORARY CONCRETE BARRIER	FOOT	500	250	250
70400200	RELOCATE TEMPORARY CONCRETE BARRIER	FOOT	500	250	250
70600250	IMPACT ATTENUATORS, TEMPORARY (NON- REDIRECTIVE), TEST LEVEL 3	EACH	2	1	1
70600350	IMPACT ATTENUATORS, RELOCATE (NON- REDIRECTIVE), TEST LEVEL 3	EACH	2	1	1
Z0007101	CONTAINMENT AND DISPOSAL OF LEAD PAINT CLEANING RESIDUES NO. 1	L SUM	1	1	
Z0007102	CONTAINMENT AND DISPOSAL OF LEAD PAINT CLEANING RESIDUES NO. 2	L SUM	1		1
Z0010501	CLEANING AND PAINTING STEEL BRIDGE NO. 1	L SUM	1	1	
Z0010502	CLEANING AND PAINTING STEEL BRIDGE NO. 2	L SUM	1		1
Z0048665	RAILROAD PROTECTIVE LIABILITY INSURANCE	L SUM	1	0.5	0.5

MODEL: SOQ (Sheet)
 FILE NAME: c:\p\work\wisdom\murray\ad115734\0876\086-shr-SOQ.dgn

USER NAME = Diana.Murray	DESIGNED -	REVISED -
	DRAWN -	REVISED -
	CHECKED -	REVISED -
PLOT DATE = 3/20/2026	DATE -	REVISED -

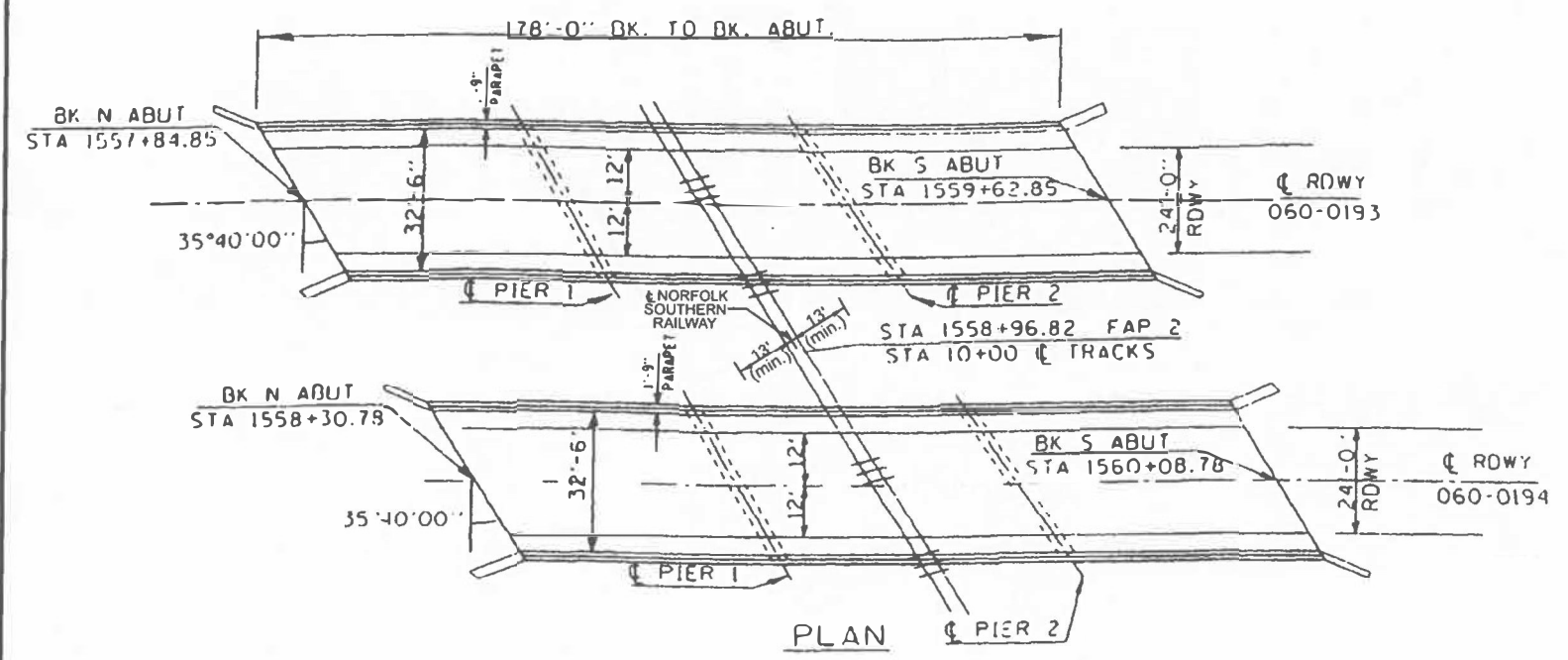
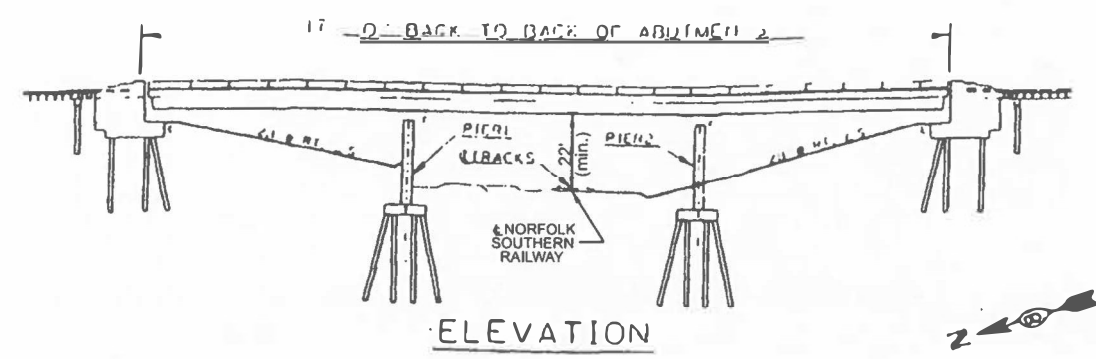
**STATE OF ILLINOIS
DEPARTMENT OF TRANSPORTATION**

SUMMARY OF QUANTITIES

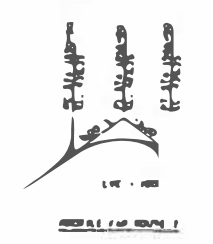
SCALE: SHEET 1 OF 1 SHEETS STA. TO STA.

F.A.P. RTE.	SECTION	COUNTY	TOTAL SHEETS	SHEET NO.
2	103P	MADISON	9	3
CONTRACT NO. 76U86				
		ILLINOIS	FED. AID PROJECT	

SECTION	103 VBI	MADISON	21
STA.	1557+84.85 TO 1560+08.78		
EXISTING CONDITIONS	ME 1 F		



1. 1557+84.85
 2. 1559+62.85
 3. 1558+96.82
 4. 1560+08.78



The following criteria shall govern the use of falsework and formwork above or adjacent to operated tracks:
 A minimum vertical clearance of 22'-0" above top of highest rail shall be maintained at all times.
 A minimum horizontal clearance of 13'-0" from centerline of track shall be maintained at all times.
 See NS PIP Manual H.1-2.B.1. and 2.

REVISIONS	
NAME	DATE

ILLINOIS DEPARTMENT OF TRANSPORTATION
 GENERAL PLAN
 ELEVATION
 BRIDGE NOTES
 FAP ROUTE 2
 SECTION 103 VBI
 MADISON COUNTY
 SN 060-0193 194

FOR INFORMATION ONLY

MODEL: SCHEDULES-1 [Sheet]
 FILE NAME: c:\pwworking\lowdellmurray\pwworking\1557340193\1557340193-194-schedule.dgn

USER NAME	Diana Murray	DESIGNED	-	REVISED	-
		DRAWN	-	REVISED	-
		CHECKED	-	REVISED	-
PLOT DATE	3/25/2026	DATE	-	REVISED	-

STATE OF ILLINOIS
 DEPARTMENT OF TRANSPORTATION

STRUCTURAL DETAILS
 SN 060-0193 & SN 060-0194

SCALE: SHEET 1 OF 6 SHEETS STA. TO STA.

F.A.P. RTE	SECTION	COUNTY	TOTAL SHEETS	SHEET NO.
2	103P	MADISON	9	4
CONTRACT NO. 78U86				
ILLINOIS FED. AID PROJECT				

**ELEVATION TOP OF 33WF130 BEAMS
EAST STRUCTURE**

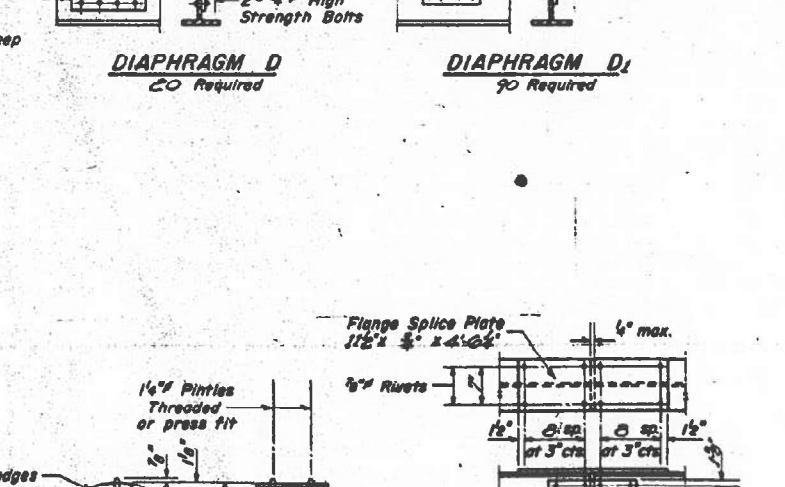
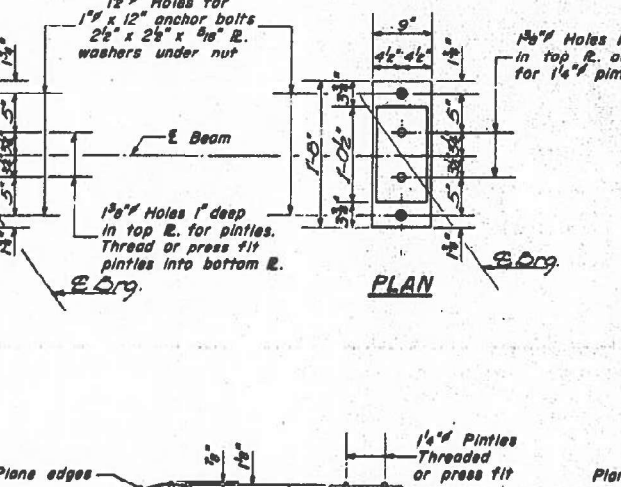
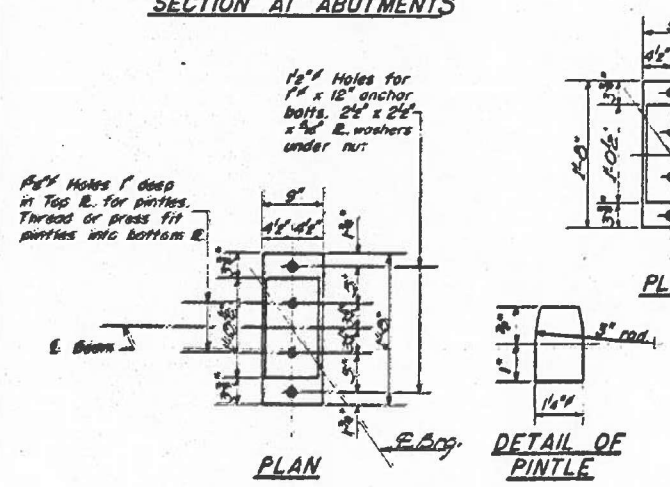
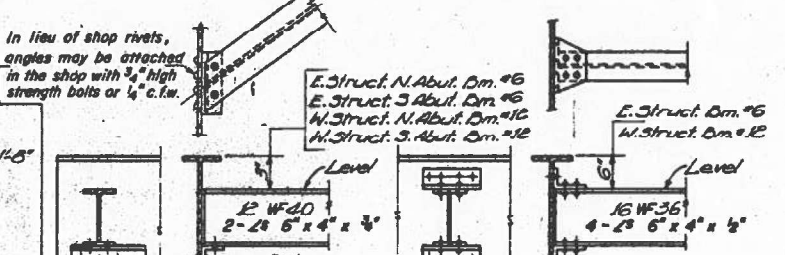
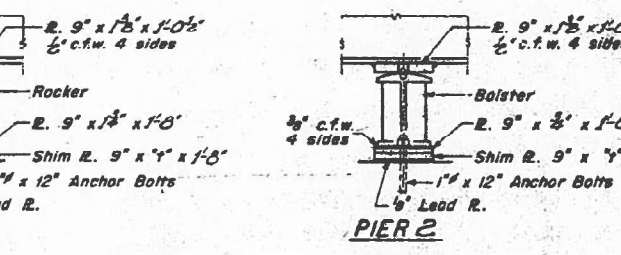
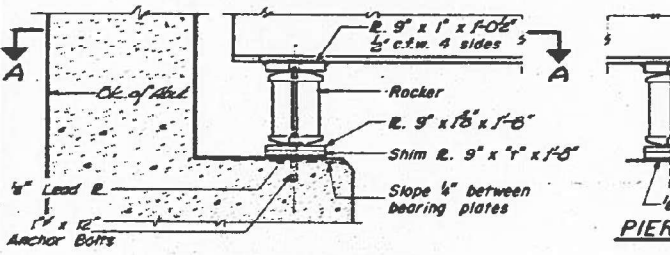
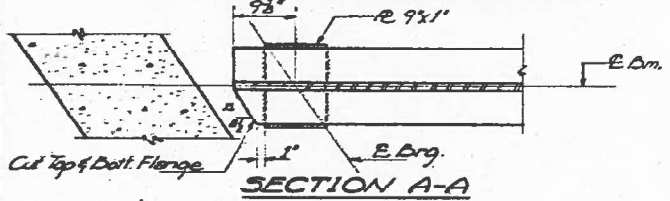
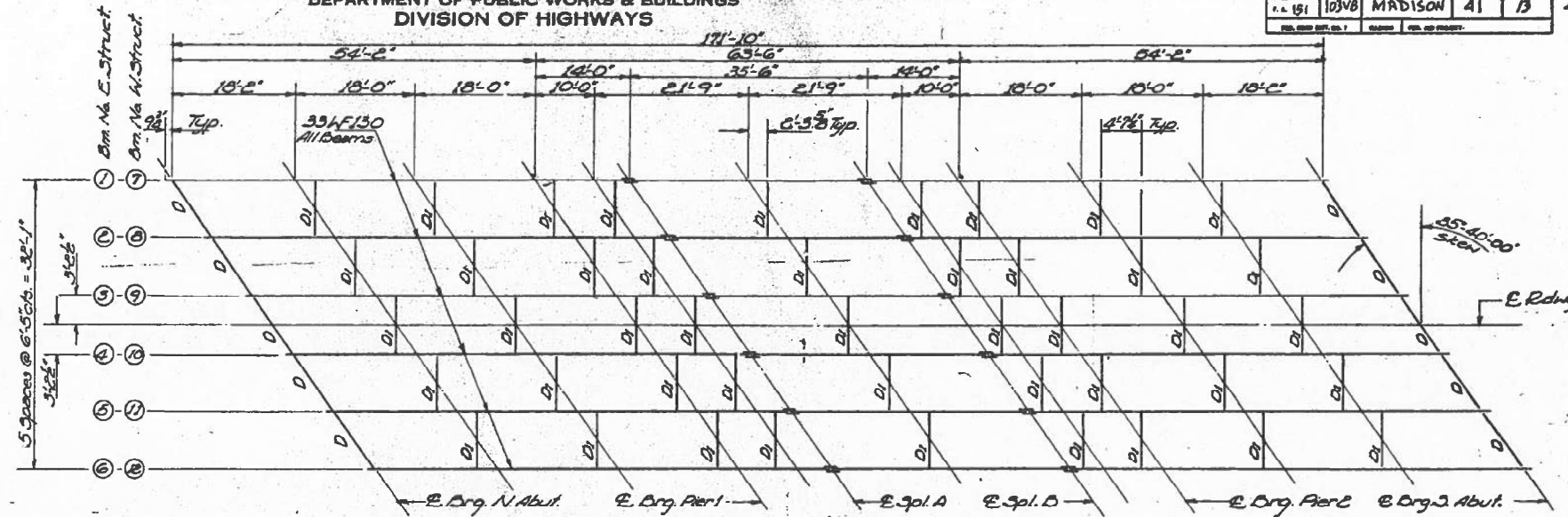
Loc. Bm No.	E. Drg. N. Abut.	E. Drg. Pier 1	E. Spl. A	E. Spl. B	E. Drg. Pier 2	E. Drg. S. Abut.
1	450.855	450.727	450.694	450.694	450.599	450.502
2	450.878	450.810	450.793	450.747	450.719	450.613
3	450.876	450.854	450.848	450.812	450.782	450.667
4	450.837	450.840	450.841	450.805	450.773	450.648
5	450.756	450.764	450.766	450.725	450.690	450.586
6	450.636	450.635	450.635	450.588	450.551	450.407

WEST STRUCTURE

Loc. Bm No.	E. Drg. N. Abut.	E. Drg. Pier 1	E. Spl. A	E. Spl. D	E. Drg. Pier 2	E. Drg. S. Abut.
7	450.701	450.629	450.610	450.532	450.463	450.293
8	450.786	450.742	450.731	450.648	450.596	450.596
9	450.833	450.803	450.795	450.705	450.651	450.442
10	450.827	450.794	450.786	450.690	450.634	450.415
11	450.761	450.716	450.704	450.602	450.543	450.316
12	450.643	450.581	450.565	450.457	450.396	450.159

STATE OF ILLINOIS
DEPARTMENT OF PUBLIC WORKS & BUILDINGS
DIVISION OF HIGHWAYS

PROJECT NO.	103VB	COUNTY	MADISON	SHEET NO.	41	OF	13
DATE	11/15/61	SHEET NO. 5		11 SHEETS			



**SHIM "I" DIMENSIONS
EAST STRUCTURE**

Loc. Bm No.	North Abut.	Pier 1	Pier 2	South Abut.
1	1/2"	0"	1/2"	0"
2	0"	0"	0"	0"
3	0"	1/2"	0"	1/2"
4	1/2"	1/2"	1/2"	1/2"
5	1/2"	1/2"	1/2"	1/2"
6	0"	0"	0"	0"

WEST STRUCTURE

Loc. Bm No.	North Abut.	Pier 1	Pier 2	South Abut.
7	1/2"	1/2"	1/2"	0"
8	1/2"	1/2"	0"	1/2"
9	1/2"	1/2"	1/2"	0"
10	1/2"	1/2"	1/2"	1/2"
11	1/2"	1/2"	1/2"	0"
12	0"	0"	0"	0"

DESIGNED: *A. V. M.*
DRAWN: *A. V. M.*
CHECKED: *A. V. M.*
DATE: *Nov 5 1964*

1-2 7-2-62 Rev 11-9-62 Rev. 8-16-63

**STRUCTURAL STEEL
F.A. RT. 151 SEC. 103 VB
MADISON COUNTY
STA. 1558+96.82**

FOR INFORMATION ONLY

USER NAME: Diana Murray	DESIGNED: A. V. M.	REVISED: -	STATE OF ILLINOIS DEPARTMENT OF TRANSPORTATION	STRUCTURAL DETAILS SN 060-0193 & SB 060-0194	F.A.P. RTE. 2	SECTION 103P	COUNTY MADISON	TOTAL SHEETS 9	SHEET NO. 5
DATE: 3/25/2026	DATE: -	REVISED: -	SCALE: -	SCALE: -	SHEET 2	OF 6 SHEETS	STA. -	TO STA. -	CONTRACT NO. 76U86

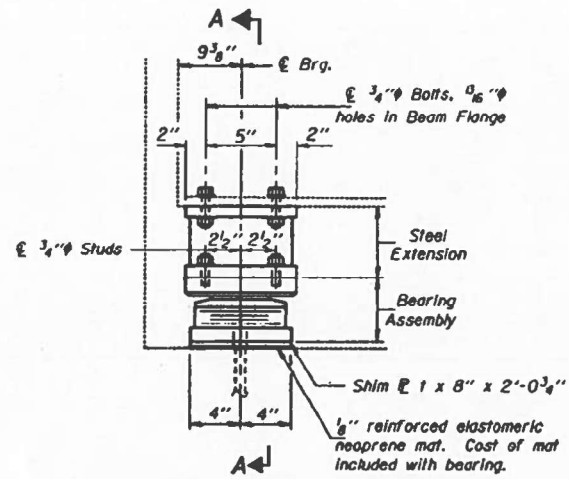
MODEL: DETAIL S-2 (Sheet)
FILE NAME: c:\pwworking\dmurray\1157341\103VB-shr-details.dwg

STATE OF ILLINOIS
DEPARTMENT OF TRANSPORTATION

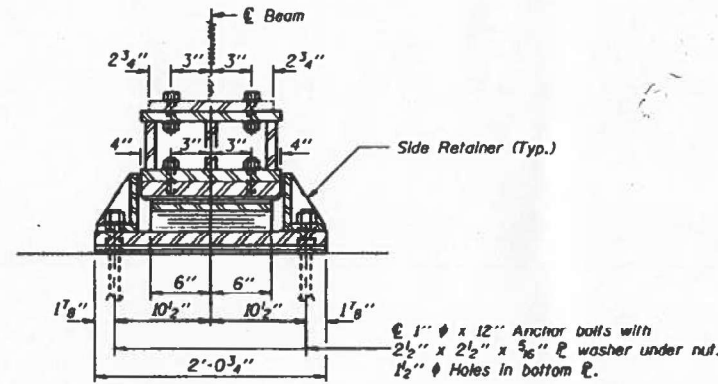
GIRDER REACTIONS

RP	(K)	21.4
RL	(K)	33.2
Imp.	(K)	9.0
R (Total)	(K)	63.6

DATE	DESIGN	CHECK	DATE	SHEET NO.
FAP 2	MSVBE	MADISON	21	16
PROJECT NO. 76U86				12 SHEETS

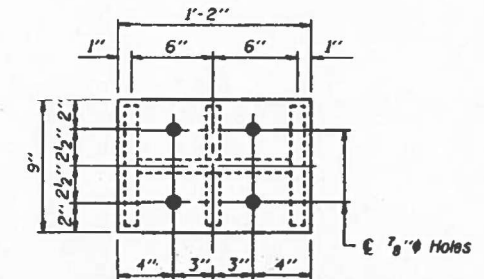


ELEVATION AT NORTH ABUTMENT



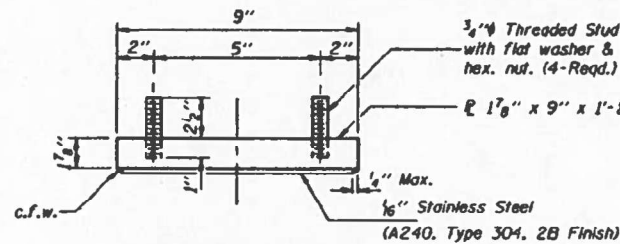
SECTION A-A

Notes: Diaphragm removal and replacement may be required to facilitate drilling holes. Cost shall be included with Furnishing and Erecting Structural Steel.
New steel extensions, side retainers, shim $\frac{3}{8}$ "s, connection bolts, and anchor bolts are included with Furnishing and Erecting Structural Steel.
See Sheet 7 of 12 for Anchor Bolt installation.
Prior to ordering any material, the Contractor shall verify in the field all bearing height and shim thickness dimensions.
Min. Jack capacity = 35 Tons.

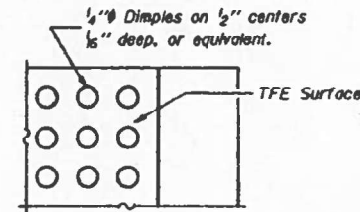


PLAN TOP AND BOTTOM PLATE

TYPE II TFE ELASTOMERIC EXP. BRG.



TOP BEARING ASSEMBLY

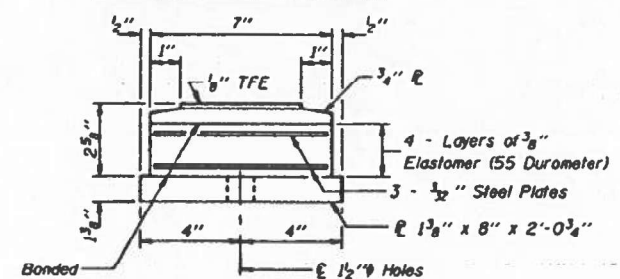


PLAN-TFE SURFACE

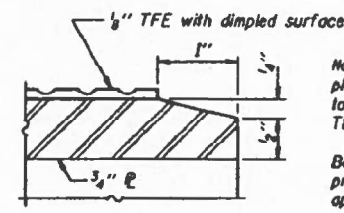
SHIM $\frac{3}{8}$ DIMENSIONS

Beam No.	S.N. 060-0193 (N.B.)						S.N. 060-0194 (S.B.)					
	1	2	3	4	5	6	7	8	9	10	11	12
Dim. 1	$\frac{1}{2}$ "	0	0	$\frac{5}{16}$ "	$\frac{5}{16}$ "	0	$\frac{1}{8}$ "	$\frac{9}{16}$ "	$\frac{3}{8}$ "	$\frac{5}{16}$ "	$\frac{1}{4}$ "	0

Note: Beam 1 is the East Beam



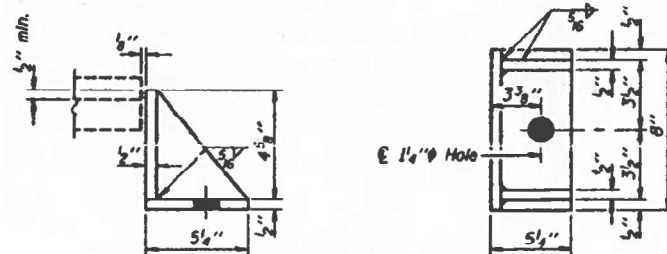
BOTTOM BEARING ASSEMBLY



SECTION THRU TFE

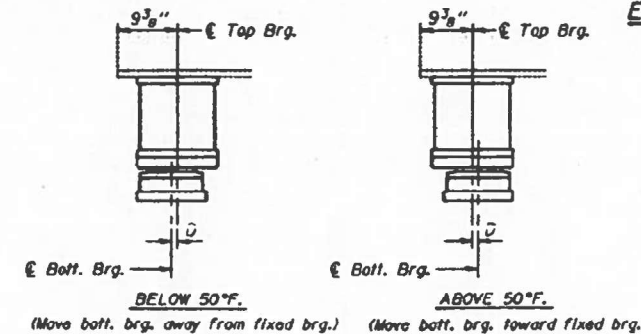
Note: The $\frac{1}{8}$ " TFE sheet shall be bonded directly to the top steel plate with a two-component, medium viscosity epoxy resin, conforming to the requirements of the Federal Specification MMM-A-134, Type I. The bond agent shall be applied on the full area of the contact surfaces.

Bonding of $\frac{1}{8}$ " TFE sheet during vulcanizing process will be permitted provided the process and method of adjusting assembly height is approved by the Engineer.



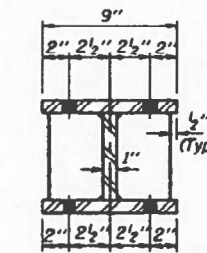
SIDE RETAINER

Equivalent rolled angle with stiffeners will be allowed in lieu of welded plates.

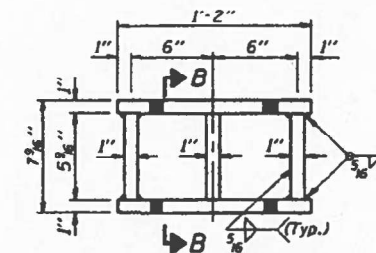


SETTING ANCHOR BOLTS AT EXP. BRG.

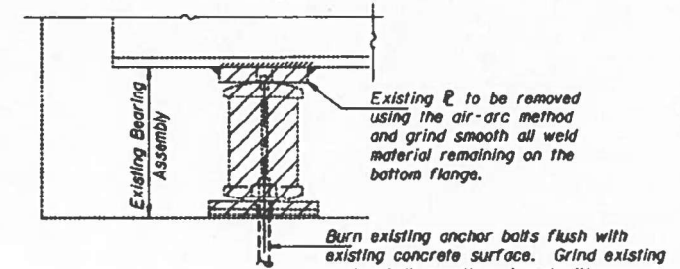
$D = \frac{1}{8}$ " per each 100' of expansion for every 15' temp. change from the normal temp. of 50°F.



SECTION B-B



STEEL EXTENSION DETAIL



EXISTING BEARING REMOVAL DETAIL

TWO STRUCTURES
BILL OF MATERIAL

Item	Unit	Total
Elastomeric Bearing Assembly Type II	Each	12
Jack and Remove Existing Bearings	Each	12

BEARING REPLACEMENT DETAILS

AT NORTH ABUTMENT
F.A. RTE. 151 SECTION 103 VB
MADISON COUNTY
S.N. 060-0193 (N.B.)
S.N. 060-0194 (S.B.)

DESIGNED	S.P.N.	MAY 2, 2000
CHECKED	A.Y.V.	EXAMINED <i>John A. Morris</i>
DRAWN	Dierbert	PASSED
CHECKED	S.P.N. A.Y.V.	CHIEF OF BRIDGES AND STRUCTURES

TYII/REPS 01-27-2000

FOR INFORMATION ONLY

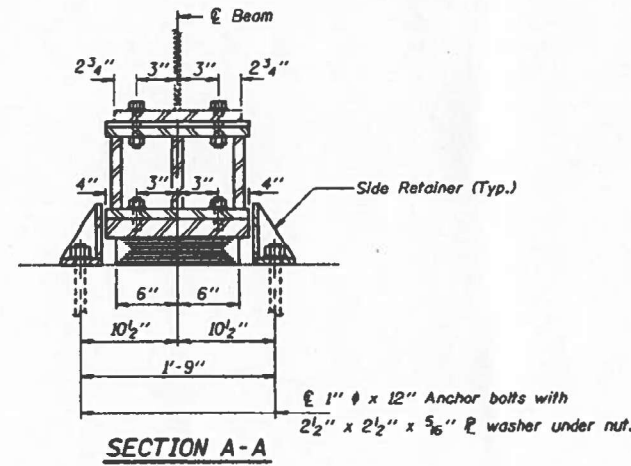
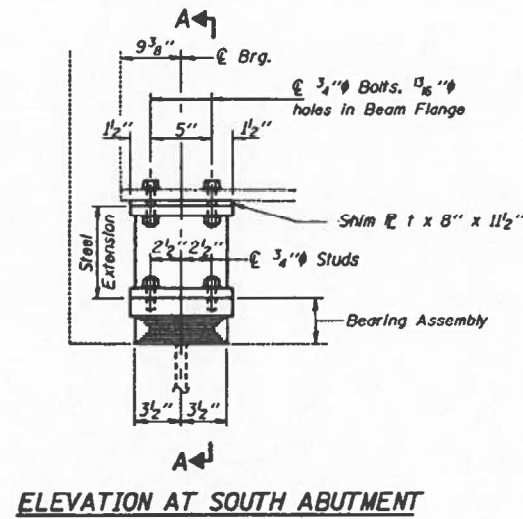
USER NAME = Diana.Murray	DESIGNED -	REVISED -	STATE OF ILLINOIS DEPARTMENT OF TRANSPORTATION	STRUCTURAL DETAILS SN 060-0193 & SN 060-0194	F.A.P. RTE. 2	SECTION 103P	COUNTY MADISON	TOTAL SHEETS 9	SHEET NO. 7
DATE = 3/24/2026	DRAWN -	REVISED -	SCALE:	SHEET 4 OF 6 SHEETS	TO STA.	ILLINOIS	FED. AID PROJECT	CONTRACT NO. 76U86	

STATE OF ILLINOIS
DEPARTMENT OF TRANSPORTATION

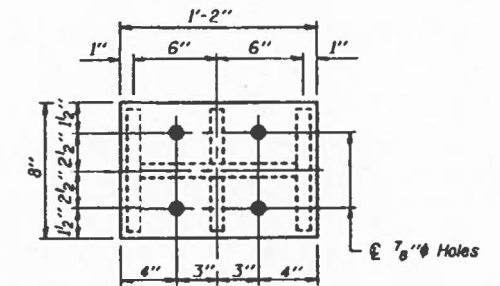
GIRDER REACTIONS

RR	(K)	21.4
R _L	(K)	33.2
Imp.	(K)	9.0
R (Total)	(K)	63.6

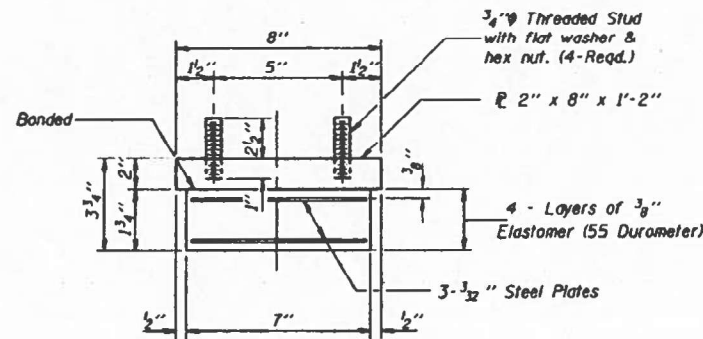
DATE	SECTION	COUNTY	SHEET	SHEET NO.
FAP 2	103VB	MADISON	21	17
PROJECT NO. 060-0193 & 060-0194				12 SHEETS



Notes: Diaphragm removal and replacement may be required to facilitate drilling holes. Cost shall be included with Furnishing and Erecting Structural Steel.
New steel extensions, side retainers, shim's, connection bolts, and anchor bolts are included with Furnishing and Erecting Structural Steel.
See Sheet 7 of 12 for Anchor Bolt Installation.
Prior to ordering any material, the Contractor shall verify in the field all bearing height and shim thickness dimensions.
Min. Jack capacity = 35 Tons.



TYPE I ELASTOMERIC EXP. BRG.

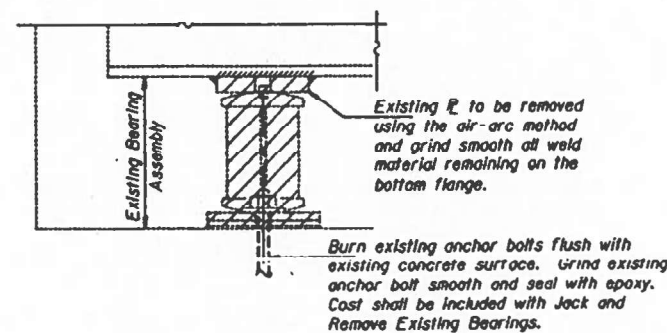
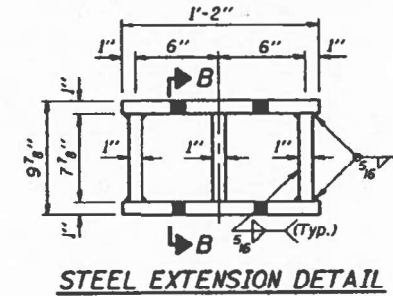
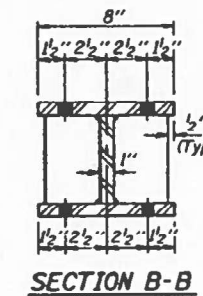


Note: Shim plates shall not be placed under Bearing Assembly.

SHIM PLATE DIMENSIONS

Beam No.	S.N. 060-0193 (N.B.)						S.N. 060-0194 (S.B.)					
	1	2	3	4	5	6	7	8	9	10	11	12
Dim. 1	0	0	5/8"	3/8"	5/16"	0	0	1/4"	0	7/16"	0	0

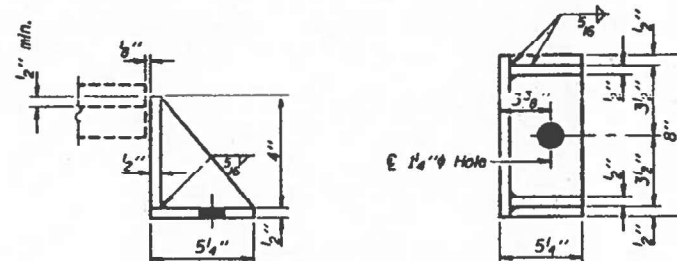
Note: Beam 1 is the East Beam



TWO STRUCTURES
BILL OF MATERIAL

Item	Unit	Total
Elastomeric Bearing Assembly Type I	Each	12
Jack and Shim Existing Bearings	Each	12

**BEARING REPLACEMENT DETAILS
AT SOUTH ABUTMENT
F.A. RTE. 151 SECTION 103 VB
MADISON COUNTY
S.N. 060-0193 (N.B.)
S.N. 060-0194 (S.B.)**



Equivalent rolled angle with stiffeners will be allowed in lieu of welded plates.

DESIGNED	S.P.N.	MAY 2, 2000
CHECKED	A.Y.V.	EXAMINED <i>John A. Morris</i>
DRAWN	D-herbert	PASSED
CHECKED	S.P.N. A.Y.V.	CHIEF OF BRIDGES AND STRUCTURES

TYI/REPS 01-27-2000

FOR INFORMATION ONLY

STATE OF ILLINOIS
DEPARTMENT OF TRANSPORTATION

STRUCTURAL DETAILS
SN 060-0193 & SN 060-0194

F.A.P. RTE.	SECTION	COUNTY	TOTAL SHEETS	SHEET NO.
2	103P	MADISON	9	8
CONTRACT NO. 76U86				ILLINOIS FED. AID PROJECT

MODEL: DETAIL S-4 (Sheet)
FILE NAME: c:\p\work\illinois\murray\06011573\103VB\060-shr-details.dgn

USER NAME = Diana.Murray	DESIGNED -	REVISED -
	DRAWN -	REVISED -
	CHECKED -	REVISED -
PLOT DATE = 3/24/2026	DATE -	REVISED -

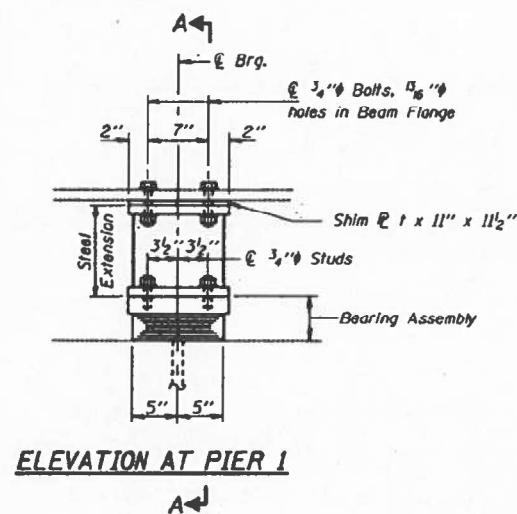
SCALE: SHEET 5 OF 6 SHEETS STA. TO STA.

STATE OF ILLINOIS
DEPARTMENT OF TRANSPORTATION

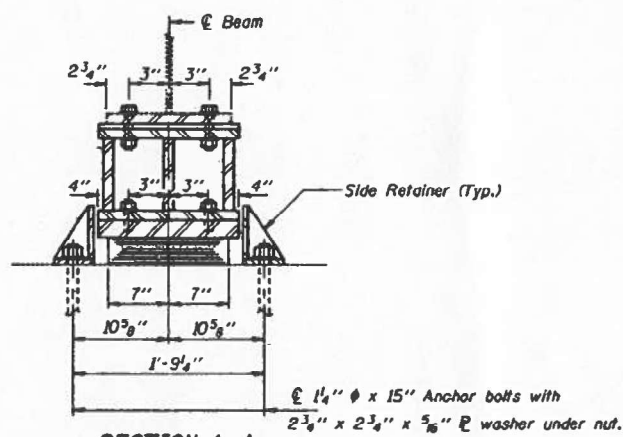
GIRDER REACTIONS

RR	(K)	67.5
RL	(K)	41.3
Imp.	(K)	11.3
R (Total)	(K)	120.1

FIGURE NO.	SECTION	QUANTITY	DATE	BY	SHEET NO. 120
FAP 2	W38X1	MADISON	21	17A	12 SHEETS
FED. AID PROJ. NO. 7		ILLINOIS	FED. AID PROJECT		

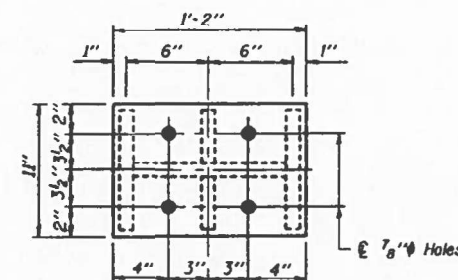


ELEVATION AT PIER 1



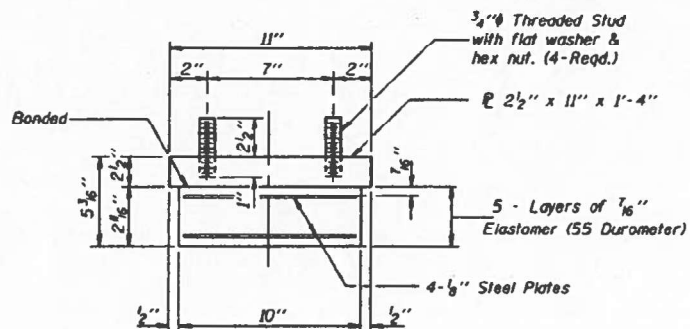
SECTION A-A

Notes: Diaphragm removal and replacement may be required to facilitate drilling holes. Cost shall be included with Furnishing and Erecting Structural Steel.
New steel extensions, side retainers, shim R's, connection bolts, and anchor bolts are included with Furnishing and Erecting Structural Steel.
See Sheet 7 of 12 for Anchor Bolt installation.
Prior to ordering any material, the Contractor shall verify in the field all bearing height and shim thickness dimensions.
Min. Jack capacity = 75 Tons.



PLAN TOP AND BOTTOM PLATE

TYPE I ELASTOMERIC EXP. BRG.



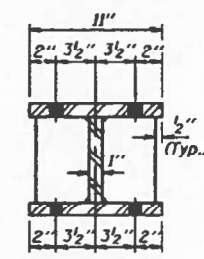
BEARING ASSEMBLY

Note: Shim plates shall not be placed under Bearing Assembly.

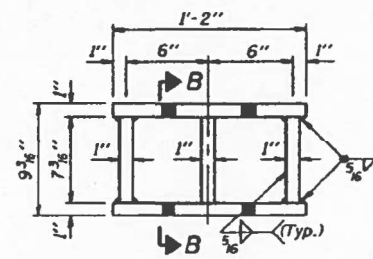
SHIM R DIMENSIONS

	S.N. 060-0193 (N.B.)						S.N. 060-0194 (S.B.)					
Beam No.	1	2	3	4	5	6	7	8	9	10	11	12
Dim. t	0	0	1/2"	5/8"	5/8"	0	9/8"	7/8"	7/8"	5/8"	1/4"	0

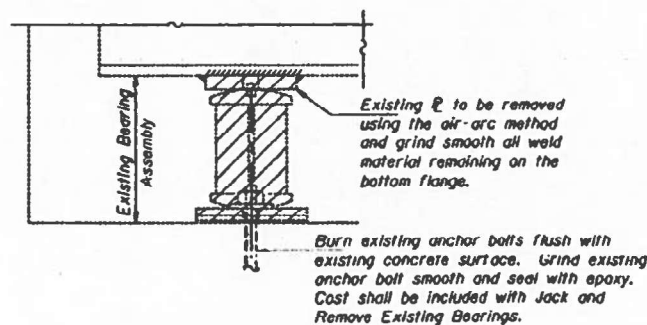
Note: Beam 1 is the East Beam



SECTION B-B



STEEL EXTENSION DETAIL



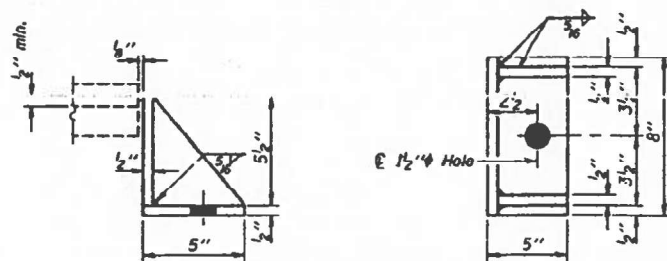
EXISTING BEARING REMOVAL DETAIL

TWO STRUCTURES
BILL OF MATERIAL

Item	Unit	Quantity
Elastomeric Bearing Assembly Type I	Each	12
Jack and Shim R Existing Bearings	Each	12

BEARING REPLACEMENT DETAILS
AT PIER 1

F.A. RTE. 151 SECTION 103 VB
MADISON COUNTY
S.N. 060-0193 (N.B.)
S.N. 060-0194 (S.B.)



SIDE RETAINER

Equivalent rolled angle with stiffeners will be allowed in lieu of welded plates.

DESIGNED	S.P.N.	MAY 2, 2000
CHECKED	A.Y.V.	EXAMINED <i>John A. Morin</i>
DRAWN	D'Herbert	PAID BY
CHECKED	S.P.N. A.Y.V.	ENGINEER OF BRIDGES AND STRUCTURES

TYI/REPS 01-27-2000

FOR INFORMATION ONLY

STATE OF ILLINOIS
DEPARTMENT OF TRANSPORTATION

STRUCTURAL DETAILS
SN 060-0193 & SN 060-0194

F.A.P. RTE.	SECTION	COUNTY	TOTAL SHEETS	SHEET NO.
2	103P	MADISON	9	9
CONTRACT NO. 78U86				

SCALE: SHEET 6 OF 6 SHEETS STA. TO STA.

ILLINOIS FED. AID PROJECT