

STATE OF ILLINOIS
DEPARTMENT OF TRANSPORTATION

F.A.I. RTE.	SECTION	COUNTY	TOTAL SHEETS
I-270	Dist 8 Bridge Painting 2026-1	Madison	21
ILLINOIS			CONTRACT NO. 76V03

FOR INDEX OF SHEETS, SEE SHEET NO. 2

**PROPOSED
HIGHWAY PLANS**

FAI ROUTE 270 (I-270)
SECTION DIST 8 BRIDGE PAINTING 2026-1
PROJECT NHPP-A2QZ(467)
BRIDGE PAINTING-PLA
MADISON COUNTY

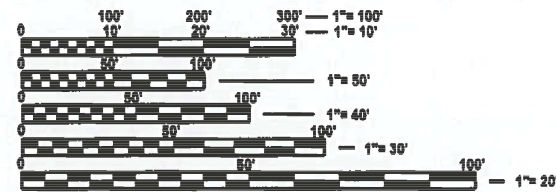
D-98-023-26



SN. 060-0350 EB
STA. 779+94.26
SN. 060-0351 WB
STA. 779+94.26

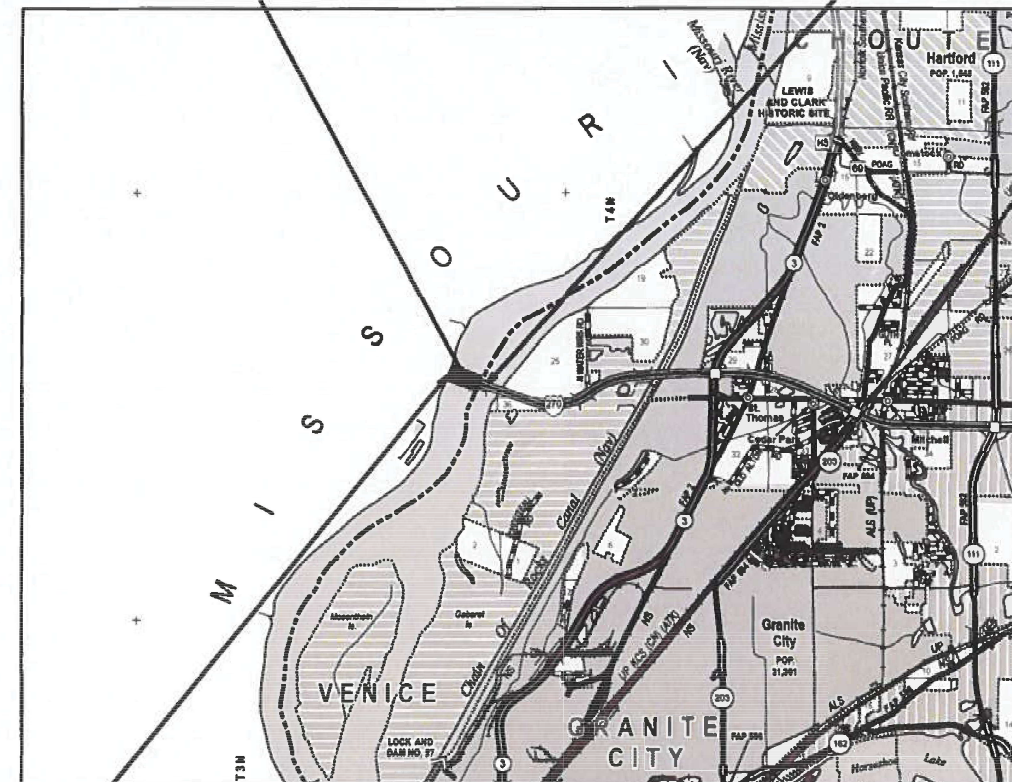
C-98-065-26

END PROJECT
STA. 834+21.78
LAT. 38.76622
LONG. -90.18013



FULL SIZE PLANS HAVE BEEN PREPARED USING STANDARD ENGINEERING SCALES. REDUCED SIZED PLANS WILL NOT CONFORM TO STANDARD SCALES. IN MAKING MEASUREMENTS ON REDUCED PLANS, THE ABOVE SCALES MAY BE USED.

J.U.L.I.E.
JOINT UTILITY LOCATION INFORMATION FOR EXCAVATION
1-800-892-0123
OR 811



PROJECT ENGINEER CHERYL KEPLAR
PROJECT MANAGER BRANDON HUMPHREYS

BEGIN PROJECT
STA. 779+65.28
LAT. 38.76622
LONG. -90.18013

GROSS LENGTH = 5,456.5 FT. = 1.033 MILE
NET LENGTH = 5,456.5 FT. = 1.033 MILE

CONTRACT NO. 76V03

STATE OF ILLINOIS
DEPARTMENT OF TRANSPORTATION

SUBMITTED *May 10 2026*
[Signature]
REGIONAL ENGINEER

May 8 2026
[Signature]
ENGINEER OF DESIGN AND ENVIRONMENT

May 8 2026
[Signature]
DIRECTOR OF HIGHWAYS PROJECT IMPLEMENTATION

**PRINTED BY THE AUTHORITY
OF THE STATE OF ILLINOIS**

INDEX OF SHEETS

- 1 COVER SHEET
- 2 INDEX OF SHEETS, HIGHWAY STANDARDS, GENERAL NOTES, AND COMMITMENTS
- 3 SUMMARY OF QUANTITIES
- 4-21 STRUCTURES DETAILS - SN. 060-0350 AND SN. 060-0351

HIGHWAY STANDARDS

- 000001-09 STANDARD SYMBOLS, ABBREVIATIONS AND PATTERNS
- 001006 DECIMAL OF AN INCH AND OF A FOOT
- 701400-12 TRAFFIC CONTROL AND PROTECTION FOR MUTILATE ROADWAYS
- 701428-01 TRAFFIC CONTROL SETUP AND REMOVAL, FREEWAY/EXPRESSWAY
- 701901-11 ADVANCE WARNING SIGNS, FREEWAY/EXPRESSWAY

COORDINATION NOTE

THE CONTRACTOR SHALL BE ADVISED THAT CONTRACT NO. 76J90 ON FAI 270 (I-270) IN MADISON COUNTY MAY AFFECT OPERATIONS UNDER THIS CONTRACT. WORK UNDER THIS CONTRACT SHALL NOT BEGIN UNTIL CONTRACT 76J90 HAS BEEN COMPLETED AND THE FINAL TRAFFIC CONFIGURATION, INCLUDING FULL SHOULDERS, IS IN PLACE, AS DETERMINED BY THE ENGINEER.

GENERAL NOTES

1. UTILITIES KNOWN TO HAVE FACILITIES WITHIN THE PROJECT AREA:
AMEREN ILLINOIS ELECTRIC
SPIRE GAS
ENABLE MISSISSIPPI RIVER TRANSMISSION
AT&T

THE FOLLOWING FACILITIES ARE NOT MEMBERS OF J.U.L.I.E.:
IDOT UNDERGROUND ELECTRIC
IDOT FIBER OPTIC
2. THIS WORK CONSISTS OF CLEANING AND PAINTING THE EXISTING STRUCTURAL STEEL OF STRUCTURES SN 060-0350 AND SN 060-0351 CARRYING I-270 OVER THE MISSISSIPPI RIVER IN MADISON COUNTY.
3. THE RESIDENT ENGINEER SHALL VERIFY THE EXISTENCE OF HIGHWAY LIGHTING, INTELLIGENT TRANSPORTATION SYSTEMS (ITS), OR ELECTRICAL CABLES ASSOCIATED WITH TRAFFIC SIGNALS WITHIN THE PROJECT LIMITS. IF ANY OF THESE ITEMS REQUIRE RELOCATION, THE CONTRACTOR SHALL PERFORM SUCH WORK IN ACCORDANCE WITH SECTION 803 OF THE STANDARD SPECIFICATIONS. THIS WORK SHALL BE PAID FOR IN ACCORDANCE WITH ARTICLE 109.04 OF THE STANDARD SPECIFICATIONS.
4. CLEANING AND PAINTING OF STRUCTURAL STEEL SHALL BE PERFORMED IN ACCORDANCE WITH SECTION 506 OF THE STANDARD SPECIFICATIONS AND THE SPECIAL PROVISIONS FOR CLEANING AND PAINTING EXISTING STEEL STRUCTURES.
5. CLEANING AND PAINTING SHALL BE LIMITED TO THE CONNECTION AREAS OF CROSS FRAMES, LATERAL BRACING, DIAPHRAGMS, AND SPLICE PLATES THROUGHOUT THE STRUCTURE. THE EXTERIOR FACES AND BOTTOM FLANGES OF FASCIA BEAMS ARE EXCLUDED FROM THIS WORK. ALL WORK SHALL BE LIMITED TO THE LOCATIONS IDENTIFIED IN THE PLANS.
6. TRAFFIC CONTROL SHALL BE IN ACCORDANCE WITH HIGHWAY STANDARDS 701400, 701428, AND 701901, THE TRAFFIC CONTROL PLAN, AND THE TRAFFIC CONTROL AND PROTECTION (SPECIAL). ALL EXISTING TRAVEL LANES SHALL REMAIN OPEN TO TRAFFIC AT ALL TIMES.
7. THE DEPARTMENT STRONGLY ENCOURAGES THE PRIME CONTRACTOR AND THEIR APPROVED SUB-CONTRACTORS TO HIRE MINORITY, WOMEN AND DISADVANTAGED INDIVIDUALS FROM ITS FEDERALLY FUNDED HIGHWAY CONSTRUCTION CAREERS TRAINING PROGRAM (HCCTP) TO HELP MEET WORKFORCE AND TRAINEE GOALS. THIS PROGRAM IS TRAINING MINORITIES, WOMEN AND DISADVANTAGED INDIVIDUALS IN HIGHWAY CONSTRUCTION-RELATED SKILLS, E.G., MATH FOR THE TRADES, JOB READINESS, TECHNICAL SKILLS COURSEWORK (CARPENTRY, CONCRETE FLATWORK, BLUEPRINT READING, SITE PLANS, SITE WORK, TOOLS USE, ETC.) AND OSHA 10 HOUR CERTIFICATION, TO PREPARE THEM FOR A CAREER IN THE HIGHWAY CONSTRUCTION TRADES. GRADUATES ARE WELL-TRAINED AND READY TO BECOME PRODUCTIVE ENTRY-LEVEL CONSTRUCTION WORKERS. CONTACT THE DISTRICT 8 EEO OFFICE AT 618-346-3360 AND/OR THE HCCTP COORDINATOR AT 618-874-6528 TO LEARN MORE ABOUT THE PROGRAM AND FOR ASSISTANCE IN MEETING WORKFORCE AND TRAINEE GOALS.
8. ALL TURF AREAS DISTURBED BY THE CONTRACTOR SHALL BE SEEDED WITH THE APPROPRIATE EROSION CONTROL SEED MIX, AS DIRECTED BY THE ENGINEER, AT THE CONTRACTOR'S EXPENSE.
9. THE EXISTING NAVIGATIONAL LIGHTING SYSTEM SHALL REMAIN OPERATIONAL AT ALL TIMES DURING CONSTRUCTION.

COMMITMENTS

NONE

MODEL - General Note (Sheet)
FILE NAME: c:\pwworking\cdmsma\1164280\0876\03-shl-gemote.dgn

REV - MS

USER NAME = Meseret.sima	DESIGNED -	REVISED -	STATE OF ILLINOIS DEPARTMENT OF TRANSPORTATION	INDEX OF SHEETS, HIGHWAY STANDARDS, GENERAL NOTES, AND COMMITMENTS	FAI RTE.	SECTION	COUNTY	TOTAL SHEETS	SHEET NO.	
	DRAWN -	REVISED -			270	Dist 8 Bridge Painting 2026-1	Madison	21	2	
	CHECKED -	REVISED -			CONTRACT NO. 76V03					
PLOT DATE = 3/19/2026	DATE -	REVISED -			SCALE:	SHEET 1	OF 1	SHEETS	STA.	TO STA.
					ILLINOIS FED. AID PROJECT					

CODE NO.	ITEM	UNIT	TOTAL QUANTITY	CONSTRUCTION CODE			
				90% FED. 10% STATE	90% FED. 10% STATE	100% MISSOURI	100% MISSOURI
				BRIDGE	BRIDGE	BRIDGE	BRIDGE
				0047	0047	0047	0047
				URBAN	URBAN	URBAN	URBAN
				SN. 060-0350 (EB)	SN. 060-0351 (WB)	SN. 060-0350 (EB)	SN. 060-0351(WB)
50606701	CLEANING AND PAINTING STRUCTURAL STEEL, LOCATION 1	L SUM	1	0.5		0.5	
50606702	CLEANING AND PAINTING STRUCTURAL STEEL, LOCATION 2	L SUM	1		0.5		0.5
67100100	MOBILIZATION	L SUM	1	0.25	0.25	0.25	0.25
Z0076600	TRAINEES	HOUR	1500	1500			
70400100	TEMPORARY CONCRETE BARRIER	FOOT	10912	2728	2728	2728	2728
Z0076604	TRAINEES TRAINING PROGRAM GRADUATE	HOUR	1500	1500			
X7010216	TRAFFIC CONTROL AND PROTECTION, (SPECIAL)	L SUM	1	0.25	0.25	0.25	0.25

∅

∅

∅ 0042

MODEL: SOO (Sheet)
FILE NAME: c:\p\work\pww\illinois\mami\1184280\0876\03-shh-SOO.dgn

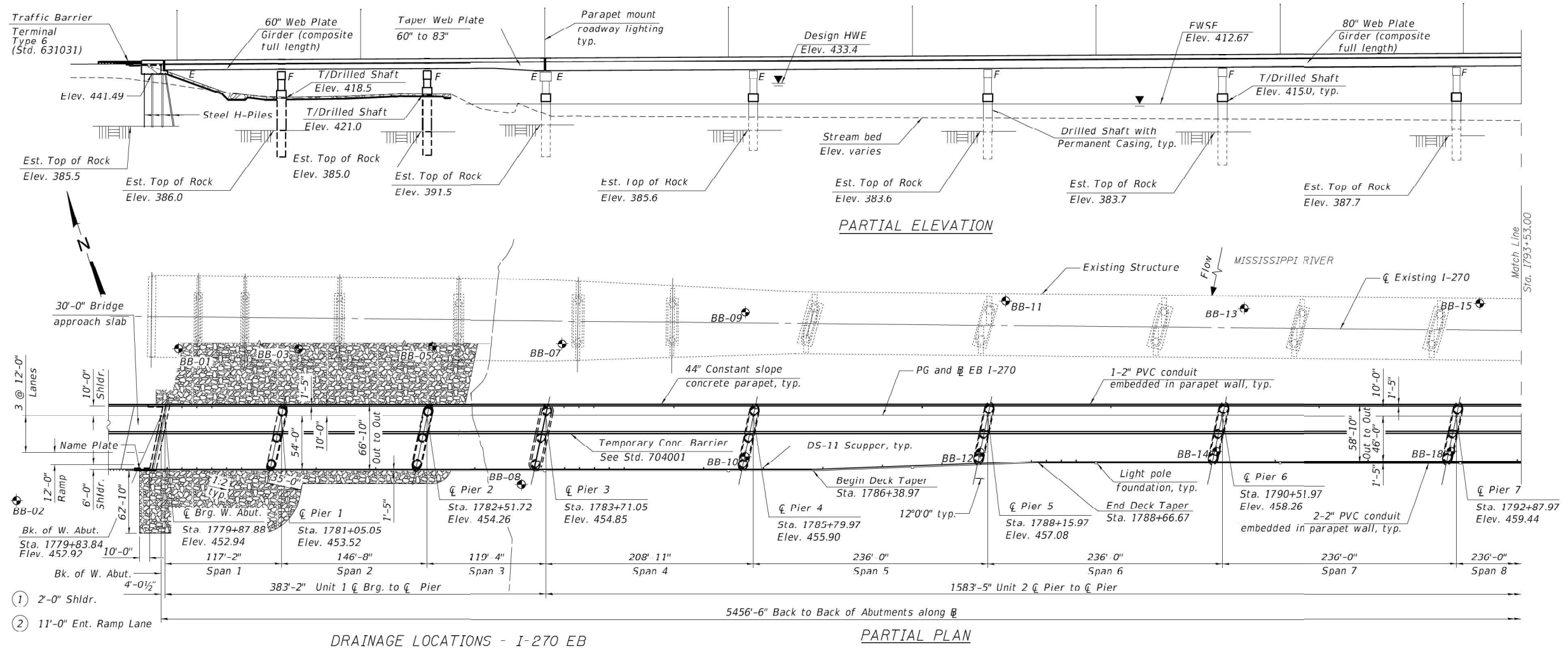
REV - MS

USER NAME = Meseret.sima	DESIGNED -	REVISED -	STATE OF ILLINOIS DEPARTMENT OF TRANSPORTATION	SUMMARY OF QUANTITIES				F.A.I RTE.	SECTION	COUNTY	TOTAL SHEETS	SHEET NO.		
	DRAWN -	REVISED -		SCALE:	SHEET 1	OF 1	SHEETS	STA.	TO STA.	270	Dist 8 Bridge Painting 2026-1	Madison	21	3
	CHECKED -	REVISED -		CONTRACT NO. 76V03										
PLOT DATE = 3/6/2026	DATE -	REVISED -		ILLINOIS FED. AID PROJECT										

Notes:
 All Elevations are given in NAVD 1988 Datum unless noted.
 NAVD 1988 = NGVD 1929 - 0.20'.
 EWSE = Estimated Water Surface Elevation.
 HWE = High Water Elevation.
 ♣ Denotes soil boring.

For slope protection plan and details, see sheet 12 of 292.

Up to 1/4 inch may be ground off the bridge deck and the bridge approach slabs.



DRAINAGE LOCATIONS - I-270 EB

Drainage Type	Span	Station	Offset	Drainage Type	Span	Station	Offset	Drainage Type	Span	Station	Offset
DS-11	1	1779+90.00	54.00' Rt.	DS-11	4	1784+04.39	10.00' Lt.	DS-11	5	1787+49.97	10.00' Lt.
DS-11	1	1780+05.00	10.00' Lt. & 54.00' Rt.	DS-11	4	1784+05.00	54.00' Rt.	DS-11	5	1787+70.00	48.62' Rt.
DS-11	1	1780+20.00	10.00' Lt. & 54.00' Rt.	DS-11	4	1784+19.39	10.00' Lt.	DS-11	6	1788+60.00	46.22' Rt.
DS-11	1	1780+35.00	10.00' Lt. & 54.00' Rt.	DS-11	4	1784+20.00	54.00' Rt.	DS-11	6	1788+75.00	46.00' Rt.
DS-11	1	1780+50.00	54.00' Rt.	DS-11	4	1784+35.00	54.00' Rt.	DS-11	6	1788+90.00	46.00' Rt.
DS-11	1	1780+65.00	54.00' Rt.	DS-11	4	1784+50.00	54.00' Rt.	DS-11	6	1789+05.00	46.00' Rt.
DS-11	2	1781+40.00	54.00' Rt.	DS-11	4	1784+99.97	10.00' Lt.	DS-11	6	1789+39.97	10.00' Lt.
DS-11	2	1782+00.00	54.00' Rt.	DS-11	4	1785+30.00	54.00' Rt.	DS-11	7	1791+05.00	46.00' Rt.
DS-11	3	1783+00.00	54.00' Rt.	DS-11	5	1785+90.00	53.42' Rt.	DS-11	7	1791+49.97	10.00' Lt.
DS-11	4	1783+89.39	10.00' Lt.	DS-11	5	1786+50.00	51.82' Rt.	DS-11	7	1791+99.15	46.00' Rt.
DS-11	4	1783+90.00	54.00' Rt.	DS-11	5	1787+10.00	50.22' Rt.	DS-11	8	1793+49.15	46.00' Rt.

GENERAL PLAN & ELEVATION - 1
I-270 OVER THE MISSISSIPPI RIVER
PUBLIC WATER
F.A.I. Rte 270 - SEC. 60B-1
MADISON (IL) AND ST. LOUIS (MO) COUNTIES
STATION 1807+12.09
STRUCTURE NO. 060-0350 (EB)

Lane configuration shown for the Ultimate 6-Lane configuration in anticipation of project approval of current 6-lane study for I-270.

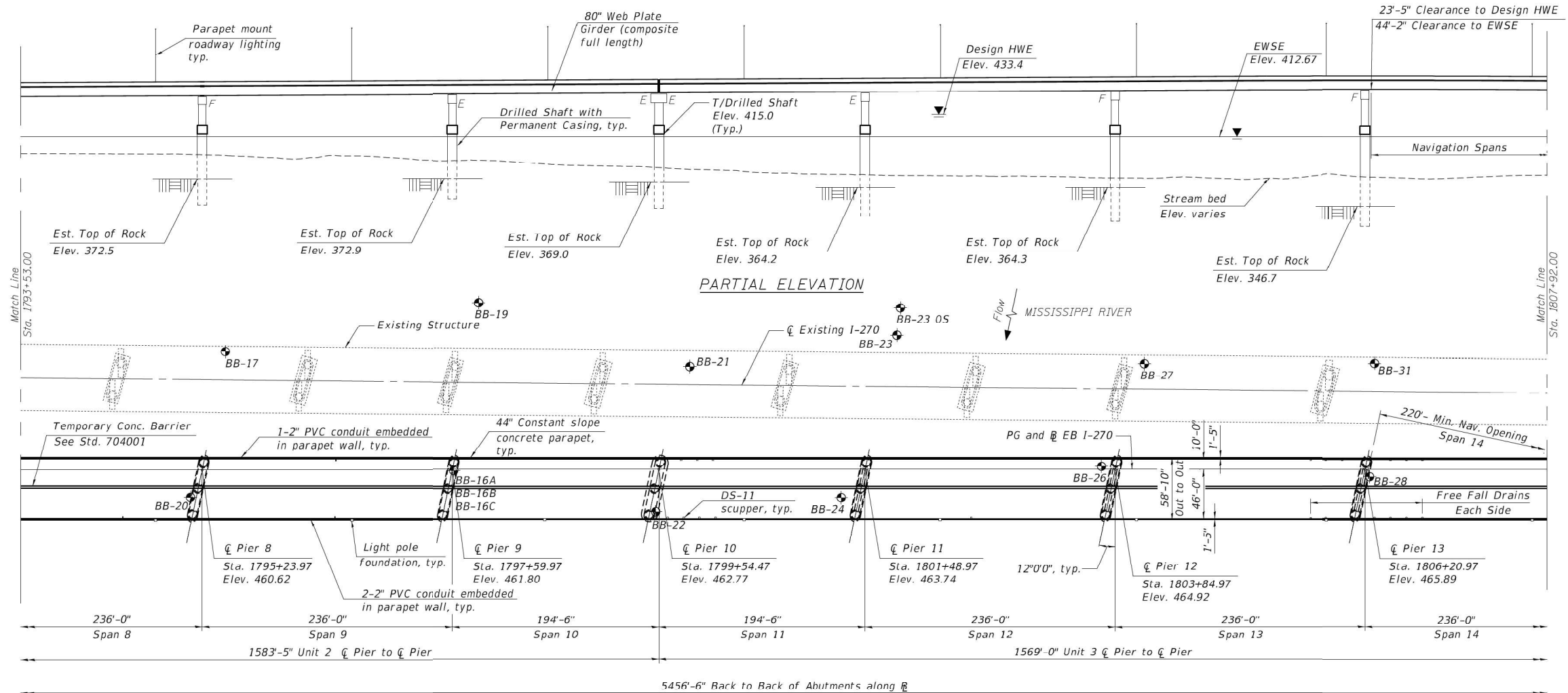
EXISTING BRIDGE PLAN

FOR INFORMATION ONLY

MODEL: EB A-A (Sheet)
 FILE NAME: c:\p\work\p\1807\1807\03-shr-detailed.dgn

USER NAME = Meseret.sima	DESIGNED -	REVISED -	STATE OF ILLINOIS DEPARTMENT OF TRANSPORTATION	STRUCTURE DETAILS - SN 060-0350 (EB)	F.A.I. RTE.	SECTION	COUNTY	TOTAL SHEETS	SHEET NO.	
	DRAWN -	REVISED -			270	Dist 8 Bridge Painting 2026-1	Madison	21	4	
	CHECKED -	REVISED -			CONTRACT NO. 76V03					
PLOT DATE = 3/6/2026	DATE -	REVISED -			ILLINOIS FED. AID PROJECT					

Notes:
 All Elevations are given in NAVD 1988 Datum unless noted.
 EWSE = Estimated Water Surface Elevation.
 HWE = High Water Elevation.
 ⚪ Denotes soil boring.
 Up to 1/4 inch may be ground off the bridge deck and the bridge approach slabs.



DRAINAGE LOCATIONS - I-270 EB

Drainage Type	Span	Station	Offset	Drainage Type	Span	Station	Offset
DS-11	8	1794+49.15	46.00' Rt.	DS-11	11	1800+07.81	46.00' Rt.
DS-11	9	1796+49.15	46.00' Rt.	DS-11	12	1802+49.15	46.00' Rt.
DS-11	9	1796+49.97	10.00' Lt.	*FFFD	13	1805+69.53	10.00' Lt. & 16.00' Rt.
DS-11	11	1799+62.81	46.00' Rt.	*FFFD	13	1805.84.53	10.00' Lt. & 46.00' Rt.
DS-11	11	1799+75.60	10.00' Lt.	*FFFD	13	1805+99.53	10.00' Lt.
DS-11	11	1799+77.81	46.00' Rt.	*FFFD	14	1806+30.00	46.00' Rt.
DS-11	11	1799+90.60	10.00' Lt.	*FFFD	14	1806+45.00	10.00' Lt. & 46.00' Rt.
DS-11	11	1799+92.81	46.00' Rt.	*FFFD	14	1806+60.00	10.00' Lt. & 46.00' Rt.
DS-11	11	1800+05.60	10.00' Lt.	*FFFD	14	1806+75.00	10.00' Lt. & 46.00' Rt.

*FFFD - Free Fall Floor Drains

PARTIAL PLAN

GENERAL PLAN & ELEVATION - 2
 I-270 OVER THE MISSISSIPPI RIVER
 PUBLIC WATER
 F.A.I. Rte 270 - SEC. 60B-1
 MADISON (IL) AND ST. LOUIS (MO) COUNTIES
 STATION 1807+12.09
 STRUCTURE NO. 060-0350 (EB)

EXISTING BRIDGE PLAN CONTINUED

FOR INFORMATION ONLY

MODEL: EB-A-A-1 [Sheet]
 FILE NAME: c:\p\work\wisconsin\m1184280\0876\03-sh1-drawings.dgn

USER NAME = Meseret.sima	DESIGNED -	REVISED -
	DRAWN -	REVISED -
	CHECKED -	REVISED -
PLOT DATE = 3/6/2026	DATE -	REVISED -

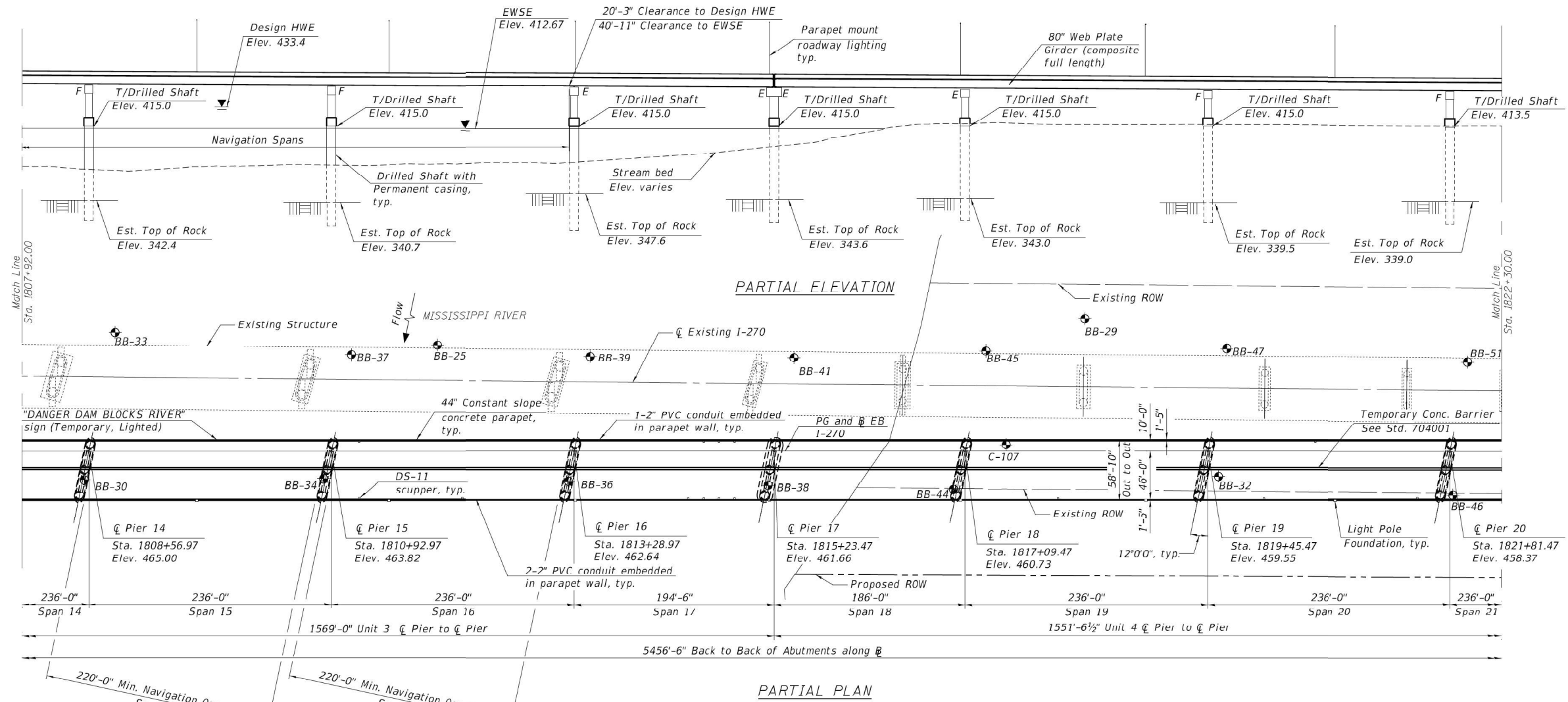
STATE OF ILLINOIS
 DEPARTMENT OF TRANSPORTATION

STRUCTURE DETAILS - SN 060-0350 (EB)

SCALE: SHEET 2 OF 18 SHEETS STA. TO STA.

F.A.I. RTE.	SECTION	COUNTY	TOTAL SHEETS	SHEET NO.
270	Dist 8 Bridge Painting 2026-1	Madison	21	5
CONTRACT NO. 76V03				
ILLINOIS FED. AID PROJECT				

Notes:
 All Elevations are given in NAVD 1988 Datum unless noted.
 FWSF = Estimated Water Surface Elevation.
 HWE = High Water Elevation.
 ⚡ Denotes soil boring.
 Up to 1/4 inch may be ground off the bridge deck and the bridge approach slabs.



DRAINAGE LOCATIONS - I-270 EB

Drainage Type	Span	Station	Offset	Drainage Type	Span	Station	Offset
DS-11	16	1811+19.97	10.00' Lt.	DS-11	17	1814+70.00	46.00' Rt.
DS-11	16	1811+20.00	46.00' Rt.	DS-11	17	1814+84.97	10.00' Lt.
DS-11	16	1812+20.00	46.00' Rt.	DS-11	17	1814+85.00	46.00' Rt.
DS-11	17	1814+40.00	46.00' Rt.	DS-11	19	1818+00.00	46.00' Rt.
DS-11	17	1814+54.97	10.00' Lt.	DS-11	20	1820+00.00	46.00' Rt.
DS-11	17	1814+55.00	46.00' Rt.	DS-11	20	1820+49.97	10.00' Lt.
DS-11	17	1814+69.97	10.00' Lt.	DS-11	20	1821+50.00	46.00' Rt.

GENERAL PLAN & ELEVATION - 3
I-270 OVER THE MISSISSIPPI RIVER
 PUBLIC WATER
 F.A.I. Rte. 270 - SEC. 60B-1
 MADISON (IL) AND ST. LOUIS (MO) COUNTIES
 STATION 1807+12.09
 STRUCTURE NO. 060-0350 (EB)

EXISTING BRIDGE PLAN CONTINUED

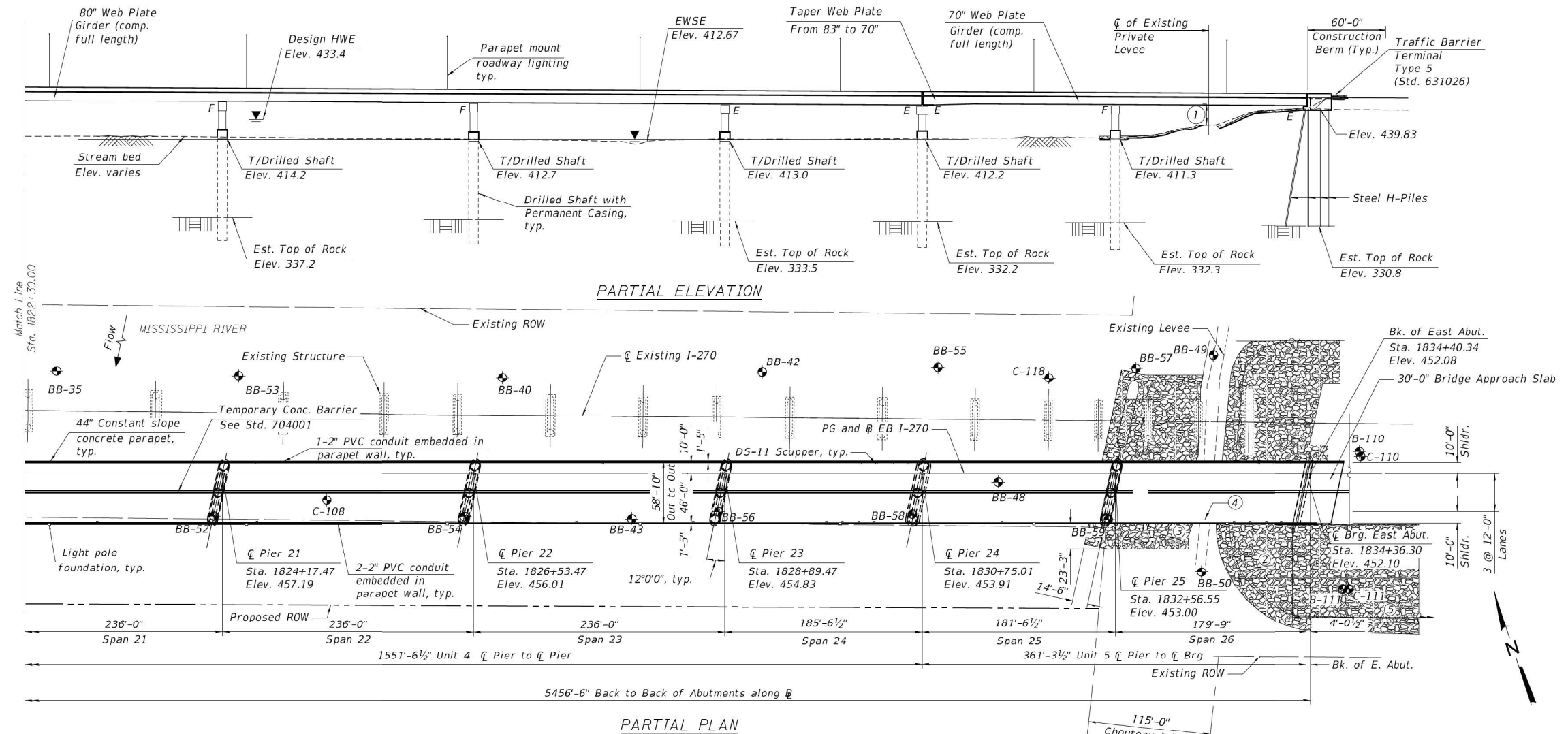
FOR INFORMATION ONLY

MODEL: EB A-A-2 (Sheet)
 FILE NAME: c:\p\work\wis\m\m\1184280\0876\03-sh1-details.dgn

USER NAME = Meseret.sima	DESIGNED -	REVISED -		STATE OF ILLINOIS DEPARTMENT OF TRANSPORTATION	STRUCTURE DETAILS - SN 060-0350 (EB)	F.A.I. RTE. 270	SECTION Dist 8 Bridge Painting 2026-1	COUNTY Madison	TOTAL SHEETS 21	SHEET NO. 6
PLOT DATE = 3/6/2026	DRAWN -	REVISOR -			SCALE: SHEET 3 OF 18 SHEETS STA. TO STA.	CONTRACT NO. 76V03			ILLINOIS FED. AID PROJECT	

Notes:
 All Elevations are given in NAVD 1988 Datum unless noted.
 EWSE = Estimated Water Surface Elevation.
 HWE = High Water Elevation.
 * Denotes soil boring.
 For slope protection plan and details, see sheet 12 of 292.
 Up to 1/4 inch may be ground off the bridge deck and the bridge approach slabs.

- ① Min. Clr. 18'-6"±
- ② Riprap slope varies. Max at 1V:2H at right angles
- ③ Riprap placed on existing west face of levee. Approximate slope 1V:2H at right angles to existing levee
- ④ Point of minimum vertical clear
- ⑤ Riprap shall extend 500ft to the east of the abutment and match roadway grading.



DRAINAGE LOCATIONS - I-270 EB

Drainage Type	Span	Station	Offset	Drainage Type	Span	Station	Offset	Drainage Type	Span	Station	Offset
DS-11	21	1823+00.00	46.00' Rt.	DS-11	24	1829+85.00	46.00' Rt.	DS-11	25	1831+50.00	46.00' Rt.
DS-11	22	1824+49.47	10.00' Lt.	DS-11	24	1830+00.00	46.00' Rt.	DS-11	26	1833+68.00	46.00' Rt.
DS-11	22	1824+50.00	46.00' Rt.	DS-11	24	1830+15.00	46.00' Rt.	DS-11	26	1833+83.00	46.00' Rt.
DS-11	22	1825+49.47	10.00' Lt.	DS-11	24	1830+17.14	10.00' Lt.	DS-11	26	1833+90.92	10.00' Lt.
DS-11	22	1826+00.00	46.00' Rt.	DS-11	24	1830+30.00	46.00' Rt.	DS-11	26	1833+98.00	46.00' Rt.
DS-11	23	1827+50.00	46.00' Rt.	DS-11	24	1830+32.14	10.00' Lt.	DS-11	26	1834+05.92	10.00' Lt.
DS-11	23	1827+74.97	10.00' Lt.	DS-11	24	1830+47.14	10.00' Lt.	DS-11	26	1834+13.00	46.00' Rt.
DS-11	23	1828+60.00	46.00' Rt.	DS-11	24	1830+62.14	10.00' Lt.	DS-11	26	1834+20.92	10.00' Lt.

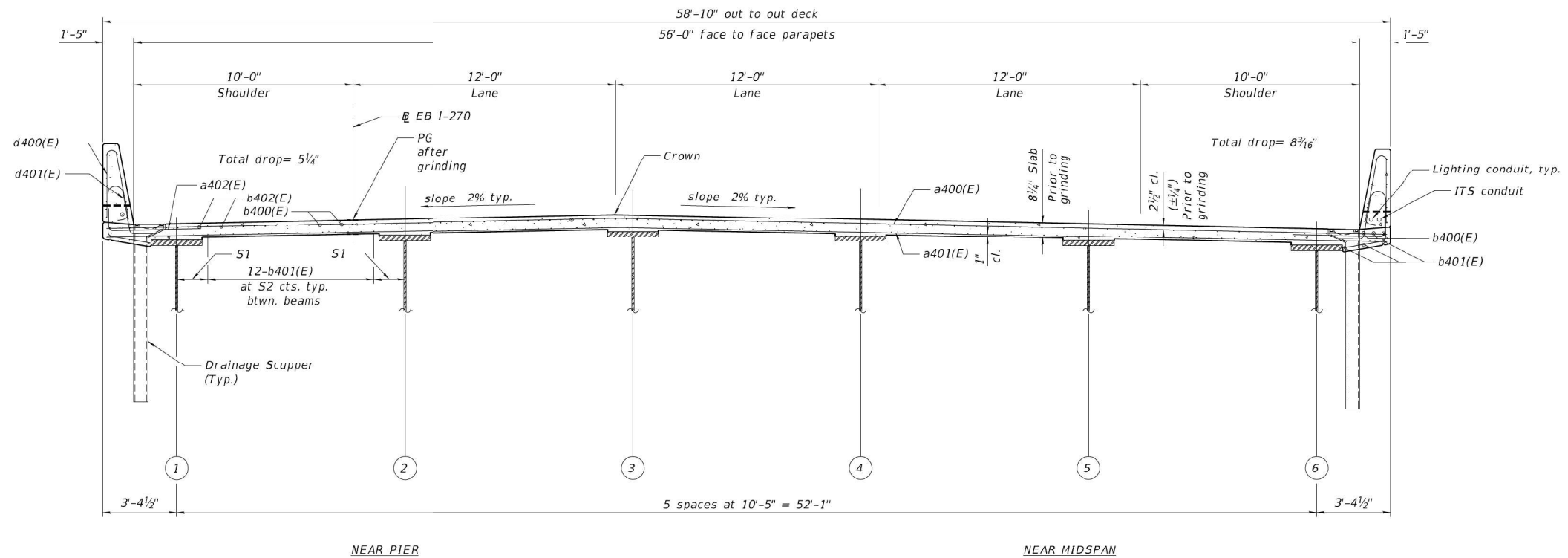
GENERAL PLAN & ELEVATION - 4
 I-270 OVER THE MISSISSIPPI RIVER
 PUBLIC WATER
 F.A.I. Rte. 270 - SEC. 60B-1
 MADISON (IL) AND ST. LOUIS (MO) COUNTIES
 STATION 1807+12.09
 STRUCTURE NO. 060-0350 (EB)

EXISTING BRIDGE PLAN CONTINUED

FOR INFORMATION ONLY

MODEL: EB A-A-3 (Sheet)
 FILE NAME: c:\pwworking\infoslam\1184280\0876\03-sh-detailed.dgn

USER NAME = Meseret.sima	DESIGNED -	REVISD -	STATE OF ILLINOIS DEPARTMENT OF TRANSPORTATION	STRUCTURE DETAILS - SN 060-0350 (EB)		F.A.I. RTE.	SECTION	COUNTY	TOTAL SHEETS	SHEET NO.	
PLOT DATE = 3/6/2026	DRAWN -	REVISD -		SCALE:	SHEET 4 OF 18 SHEETS	STA.	270	Dist 8 Bridge Painting 2026-1	Madison	21	7
	CHECKED -	REVISD -		TO STA.			CONTRACT NO. 76V03				
	DATE -	REVISD -				ILLINOIS FED. AID PROJECT					



SECTION A-A
(Looking upstation)

TABLE OF DIMENSIONS

FLANGE WIDTH	S1	S2
18"	1'-1"	9"
28"	1'-6 1/2"	8"

Note:
Flare #5 b201(E) to provide a smooth transition at flange width changes to match the maximum spacing S2

Note:
For Bill of Material, see sheet 93 of 292.
For Location of drainage scuppers, see deck plans.
For Superstructure Details, see sheet 78 of 292.

EXISTING BRIDGE PLAN CONTINUED

FOR INFORMATION ONLY

MODEL: EB A-A-4 (Sheet)
FILE NAME: c:\p\work\wis\m\1184280\B76\03-sh1-details.dgn

USER NAME = Meseret.sima	DESIGNED -	REVISED -
	DRAWN -	REVISED -
	CHECKED -	REVISED -
PLOT DATE = 3/6/2026	DATE -	REVISED -

STATE OF ILLINOIS
DEPARTMENT OF TRANSPORTATION

STRUCTURE DETAILS - SN 060-0350 (EB)

SCALE: SHEET 5 OF 18 SHEETS STA. TO STA.

F.A.I RTE.	SECTION	COUNTY	TOTAL SHEETS	SHEET NO.
270	Dist 8 Bridge Painting 2026-1	Madison	21	8
CONTRACT NO. 76V03				
ILLINOIS FED. AID PROJECT				

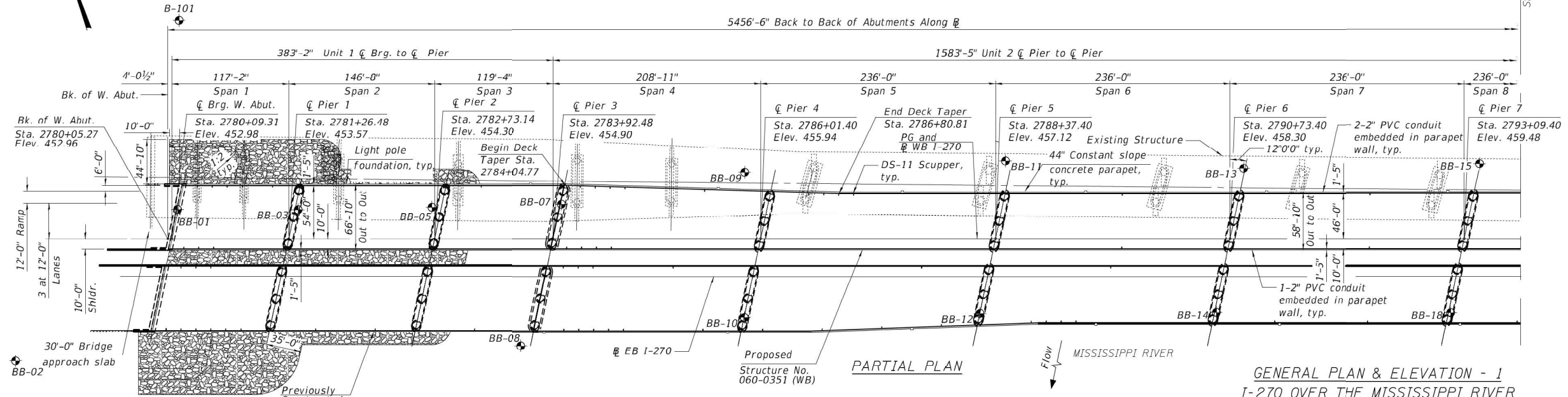
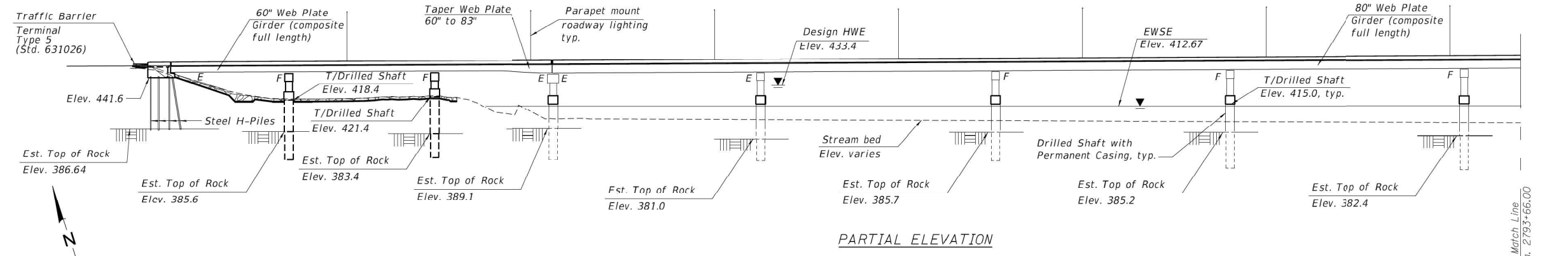
Notes:
 All Elevations are given in NAVD 1988 Datum unless noted.
 NAVD 1988 = NGVD 1929 - 0.20'.
 EWSE = Estimated Water Surface Elevation.
 HWE = High Water Elevation.
 ⚡ Denotes soil boring.

For slope protection plan and details, see sheet 12 of 288.

Up to 1/4 inch may be ground off the bridge deck and the bridge approach slabs.

DRAINAGE LOCATIONS - I-270 WB

Drainage Type	Span	Station	Offset	Drainage Type	Span	Station	Offset	Drainage Type	Span	Station	Offset
DS-11	1	2780+21.18	10.00' Rt.	DS-11	4	2784+06.15	10.00' Rt.	DS-11	5	2786+79.96	46.00' Lt.
DS-11	1	2780+34.79	54.00' Lt.	DS-11	4	2784+19.96	53.81' Lt.	DS-11	5	2786+94.96	46.00' Lt.
DS-11	1	2780+36.18	10.00' Rt.	DS-11	4	2784+21.15	10.00' Rt.	DS-11	5	2787+12.40	10.00' Rt.
DS-11	1	2780+49.79	54.00' Lt.	DS-11	4	2784+34.96	53.33' Lt.	DS-11	5	2787+44.96	46.00' Lt.
DS-11	1	2780+51.18	10.00' Rt.	DS-11	4	2784+36.15	10.00' Rt.	DS-11	6	2789+14.96	46.00' Lt.
DS-11	1	2780+64.79	54.00' Lt.	DS-11	4	2784+49.96	52.85' Lt.	DS-11	6	2789+64.40	10.00' Rt.
DS-11	1	2780+79.79	54.00' Lt.	DS-11	4	2785+51.15	10.00' Rt.	DS-11	6	2790+14.96	46.00' Lt.
DS-11	1	2781+10.04	54.00' Lt.	DS-11	4	2785+64.96	52.37' Lt.	DS-11	7	2791+64.96	46.00' Lt.
DS-11	2	2781+70.04	54.00' Lt.	DS-11	4	2785+45.04	49.81' Lt.	DS-11	7	2792+14.40	10.00' Rt.
DS-11	2	2782+45.04	54.00' Lt.	DS-11	5	2786+49.96	46.45' Lt.	DS-11	7	2792+64.96	46.00' Lt.
DS-11	3	2783+20.04	54.00' Lt.	DS-11	5	2786+64.96	46.00' Lt.				



Lane configuration shown for the Ultimate 6-Lane configuration in anticipation of project approval of current 6-lane study for I-270.

GENERAL PLAN & ELEVATION - 1
 I-270 OVER THE MISSISSIPPI RIVER
 PUBLIC WATER
 F.A.I. Rte. 270 - SEC. 60B-1
 MADISON (IL) AND ST. LOUIS (MO) COUNTIES
 STATION 2807+33.52
 STRUCTURE NO. 060-0351 (WB)

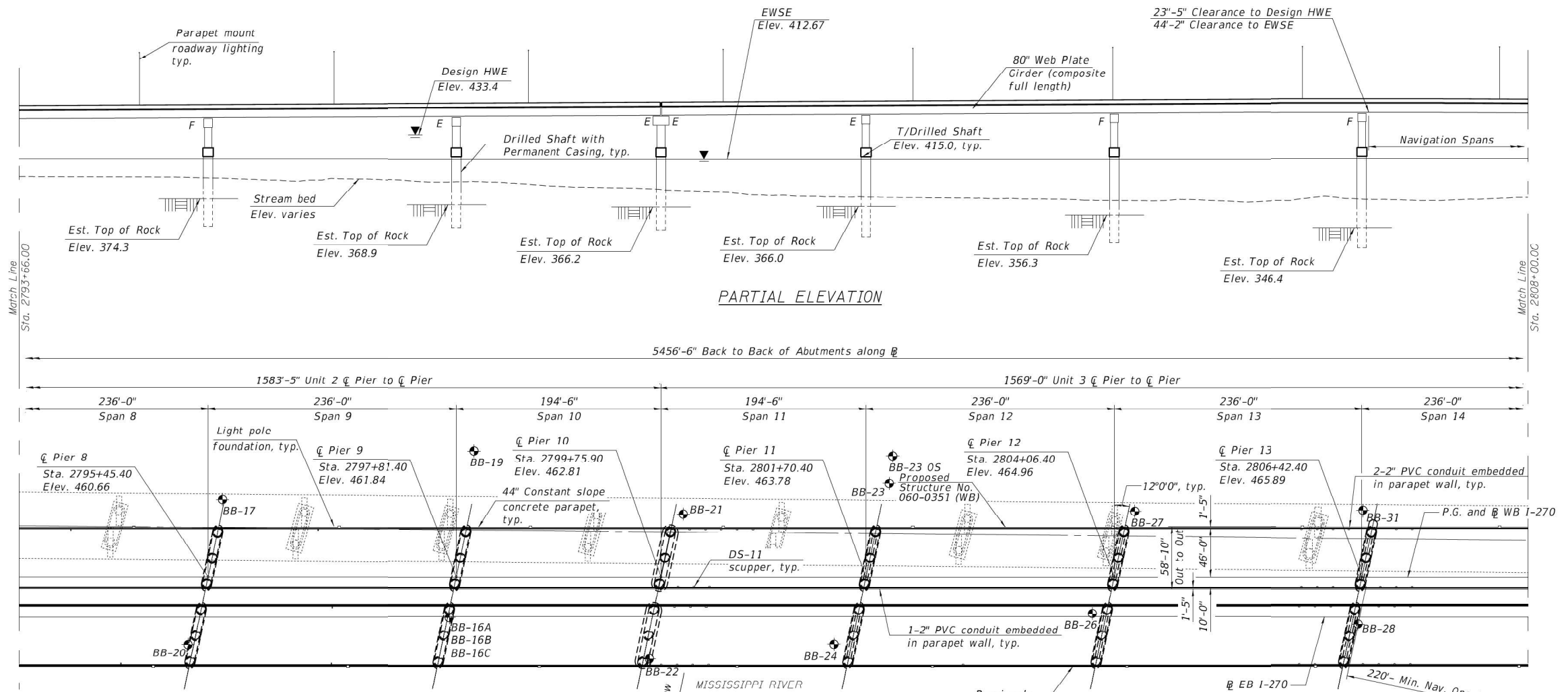
EXISTING BRIDGE PLAN CONTINUED

FOR INFORMATION ONLY

MODEL: WB A-A-5 (Sheet) FILE NAME: c:\p\work\p\184280\060-0351-03-sh1-details.dgn

USER NAME = Meseret.sima	DESIGNED -	REVISED -	STATE OF ILLINOIS DEPARTMENT OF TRANSPORTATION	STRUCTURE DETAILS - SN 060-0351 (WB)			F.A.I. RTE.	SECTION	COUNTY	TOTAL SHEETS	SHEET NO.
	DRAWN -	REVISED -		270	Dist 8 Bridge Painting 2026-1	Madison	21	9			
	CHECKED -	REVISED -		CONTRACT NO. 76V03							
PLOT DATE = 3/6/2026	DATE -	REVISED -		ILLINOIS	FED. AID PROJECT						

Notes:
 All Elevations are given in NAVD 1988 Datum unless noted.
 EWSE = Estimated Water Surface Elevation.
 HWE = High Water Elevation.
 ⚡ Denotes soil boring.
 Up to 1/4 inch may be ground off the bridge deck and the bridge approach slabs.



DRAINAGE LOCATIONS - I-270 WB

Drainage Type	Span	Station	Offset	Drainage Type	Span	Station	Offset	Drainage Type	Span	Station	Offset
DS-11	8	2794+14.96	46.00' Lt.	DS-11	11	2800+33.37	46.00' Lt.	*FFFD	13	2806+15.04	46.00' Lt.
DS-11	8	2794+15.40	10.00' Rt.	DS-11	11	2800+48.37	46.00' Lt.	*FFFD	13	2806+30.04	46.00' Lt.
DS-11	9	2796+49.96	46.00' Lt.	DS-11	11	2800+63.37	46.00' Lt.	*FFFD	14	2806+60.00	10.00' Rt.
DS-11	11	2799+92.15	10.00' Rt.	*FFFD	13	2805+85.00	10.00' Rt.	*FFFD	14	2806+75.00	10.00' Rt.
DS-11	11	2800+03.37	46.00' Lt.	*FFFD	13	2805+85.04	46.00' Lt.	*FFFD	14	2806+75.04	46.00' Lt.
DS-11	11	2800+07.15	10.00' Rt.	*FFFD	13	2806+00.00	10.00' Rt.	*FFFD	14	2806+90.00	10.00' Rt.
DS-11	11	2800+18.38	46.00' Lt.	*FFFD	13	2806+00.04	46.00' Lt.	*FFFD	14	2806+90.04	46.00' Lt.
DS-11	11	2800+22.15	10.00' Rt.	*FFFD	13	2806+15.00	10.00' Rt.				

*FFFD - Free Fall Floor Drains

EXISTING BRIDGE PLAN CONTINUED

GENERAL PLAN & ELEVATION - 2
I-270 OVER THE MISSISSIPPI RIVER
 PUBLIC WATER
 F.A.I. Rte. 270 - SEC. 60B-1
 MADISON (IL) AND ST. LOUIS (MO) COUNTIES
 STATION 2807+33.52
 STRUCTURE NO. 060-0351 (WB)

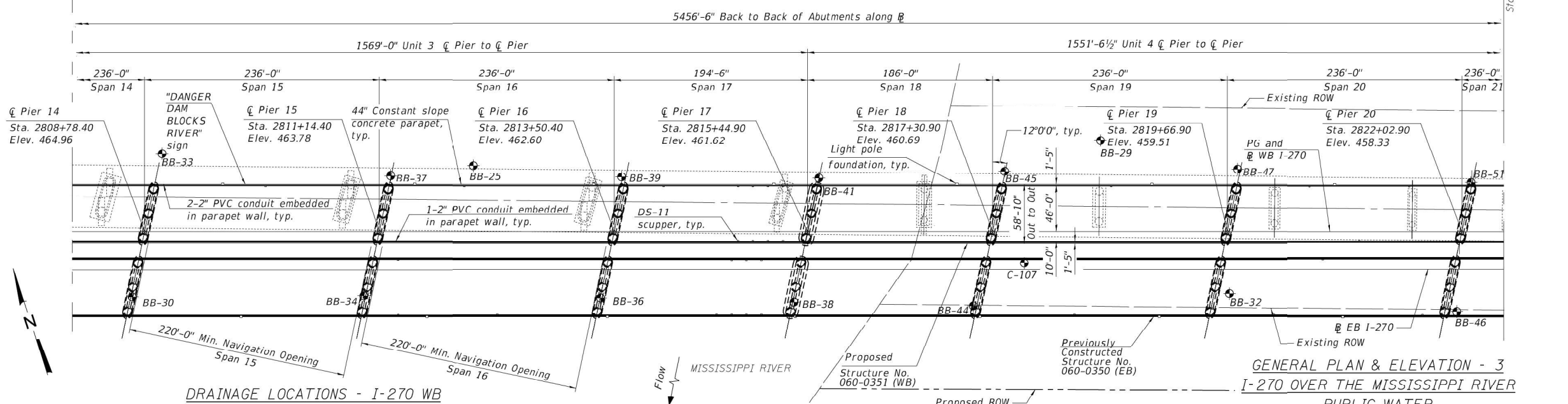
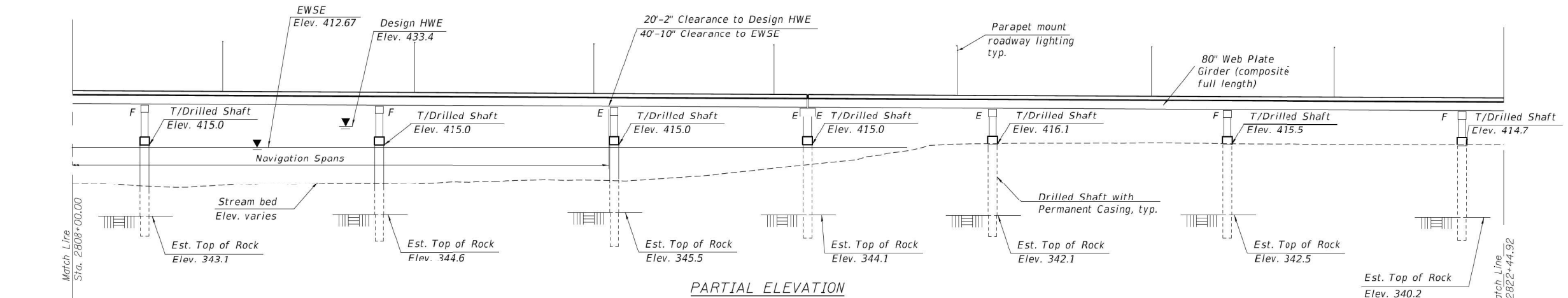
FOR INFORMATION ONLY

MODEL: VIB A-A-6 (Sheet)
 FILE NAME: c:\p\work\p\1184280\0876\03-sh-detailed.dgn

USER NAME = Meseret.sima	DESIGNED -	REVISD -	STATE OF ILLINOIS DEPARTMENT OF TRANSPORTATION	STRUCTURE DETAILS - SN 060-0351(WB)		F.A.I. RTE.	SECTION	COUNTY	TOTAL SHEETS	SHEET NO.
	DRAWN -	REVISD -		270	Dist 8 Bridge Painting 2026-1	Madison	21	10		
	CHECKED -	REVISD -		CONTRACT NO. 76V03						
PLOT DATE = 3/6/2026	DATE -	REVISD -		SCALE:	SHEET 7	OF 18 SHEETS	STA.	TO STA.	ILLINOIS FED. AID PROJECT	

Notes:
 All Elevations are given in NAVD 1988 Datum unless noted.
 EWSE = Estimated Water Surface Elevation.
 HWE = High Water Elevation.
 ⚡ Denotes soil boring.

Up to 1/4 inch may be ground off the bridge deck and the bridge approach slabs.



DRAINAGE LOCATIONS - I-270 WB

Drainage Type	Span	Station	Offset	Drainage Type	Span	Station	Offset
DS-11	15	2810+00.04	46.00' Lt.	DS-11	17	2815+20.04	10.00' Rt. & 46.00' Lt.
DS-11	16	2812+00.04	46.00' Lt.	DS-11	19	2818+50.04	46.00' Lt.
DS-11	17	2814+00.04	46.00' Lt.	DS-11	20	2820+50.04	46.00' Lt.
DS-11	17	2814+75.04	10.00' Rt. & 46.00' Lt.	DS-11	20	2821+00.04	10.00' Rt.
DS-11	17	2814+90.04	10.00' Rt. & 46.00' Lt.	DS-11	20	2821+50.04	46.00' Lt.
DS-11	17	2815+05.04	10.00' Rt. & 46.00' Lt.				

EXISTING BRIDGE PLAN CONTINUED

FOR INFORMATION ONLY

MODEL: WB A-7 (Sheet) FILE NAME: c:\p\work\p060351\m1184280\060351\sn-detailed.dgn

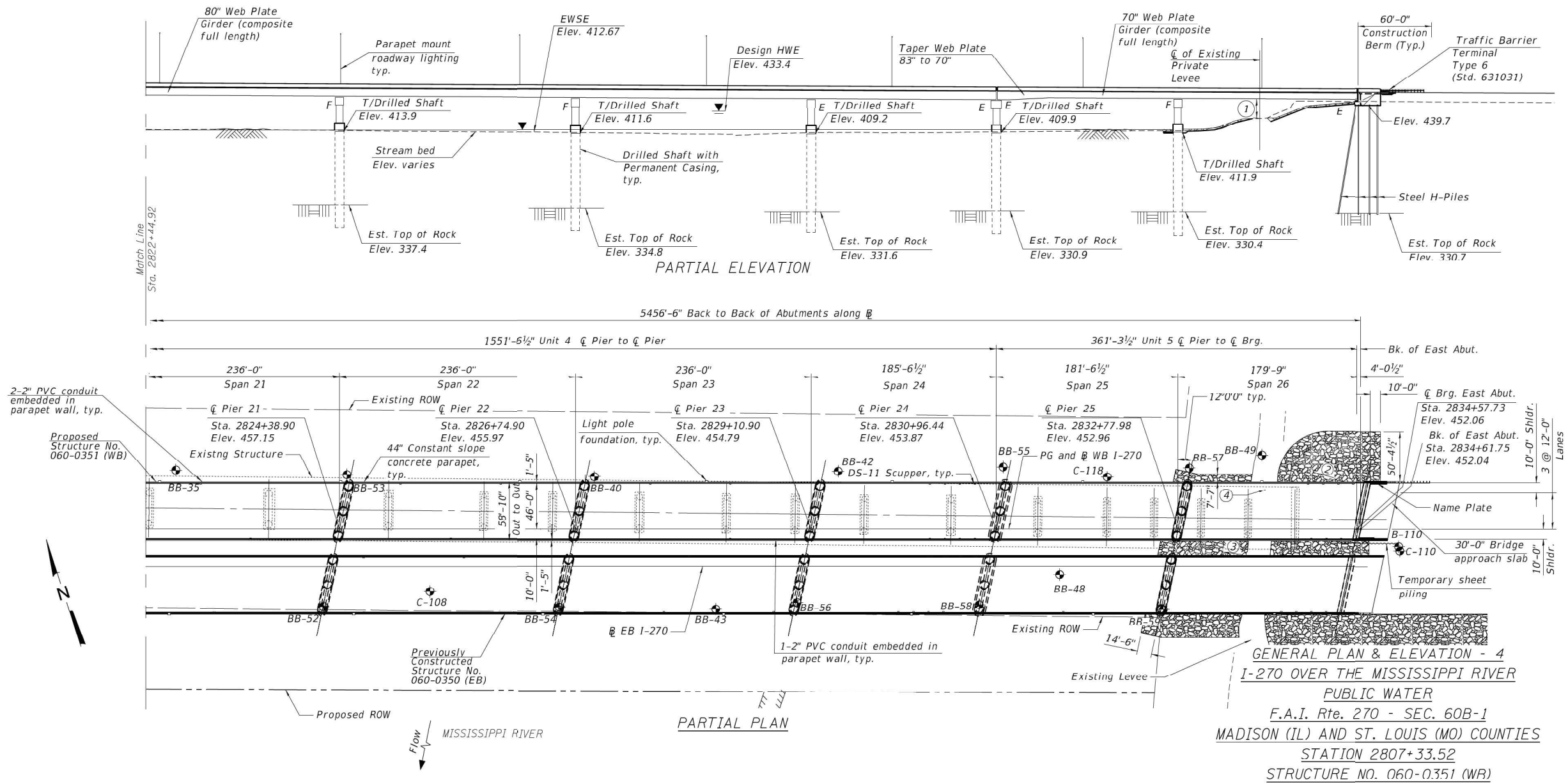
USER NAME = Meseret,sima	DESIGNED -	REVISED -	STATE OF ILLINOIS DEPARTMENT OF TRANSPORTATION	STRUCTURE DETAILS - SN 060-0351(WB)	F.A.I RTE.	SECTION	COUNTY	TOTAL SHEETS	SHEET NO.	
	DRAWN -	REVISED -			270	Dist 8 Bridge Painting 2026-1	Madison	21	11	
	CHECKED -	REVISED -			CONTRACT NO. 76V03					
PLOT DATE = 3/6/2026	DATE -	REVISED -			ILLINOIS FED. AID PROJECT					

Notes:
 All Elevations are given in NAVD 1988 Datum unless noted.
 EWSE = Estimated Water Surface Elevation.
 HWE = High Water Elevation.
 ⚡ Denotes soil boring.
 For slope protection plan and details, see sheet 12 of 288.
 Up to 1/4 inch may be ground off the bridge deck and the bridge approach slabs.

- ① Min. Clr. 18'-6"±
- ② Riprap slope varies. Max at 1V:2H at right angles
- ③ Riprap placed on existing west face of levee. Approximate slope 1V:2H at right angles to existing levee
- ④ Point of minimum vertical clear

DRAINAGE LOCATIONS - I-270 WB

Drainage Type	Span	Station	Offset	Drainage Type	Span	Station	Offset	Drainage Type	Span	Station	Offset
DS-11	21	2823+00.04	46.00' Lt.	DS-11	24	2830+29.90	10.00' Rt.	DS-11	26	2834+08.38	46.00' Lt.
DS-11	21	2823+49.90	10.00' Rt.	DS-11	24	2830+30.04	46.00' Lt.	DS-11	26	2834+11.60	10.00' Rt.
DS-11	22	2825+00.04	46.00' Lt.	DS-11	24	2830+44.90	10.00' Rt.	DS-11	26	2834+23.38	46.00' Lt.
DS-11	22	2825+49.90	10.00' Rt.	DS-11	24	2830+45.04	46.00' Lt.	DS-11	26	2834+26.60	10.00' Rt.
DS-11	22	2826+00.04	46.00' Lt.	DS-11	24	2830+59.90	10.00' Rt.	DS-11	26	2834+38.38	46.00' Lt.
DS-11	23	2827+50.04	46.00' Lt.	DS-11	24	2830+60.04	46.00' Rt.	DS-11	26	2834+41.60	10.00' Rt.
DS-11	23	2828+29.90	10.00' Rt.	DS-11	24	2830+74.90	10.00' Rt.	DS-11	26	2834+53.38	46.00' Lt.
DS-11	23	2828+30.04	46.00' Lt.	DS-11	24	2830+75.04	46.00' Lt.				



EXISTING BRIDGE PLAN CONTINUED

FOR INFORMATION ONLY

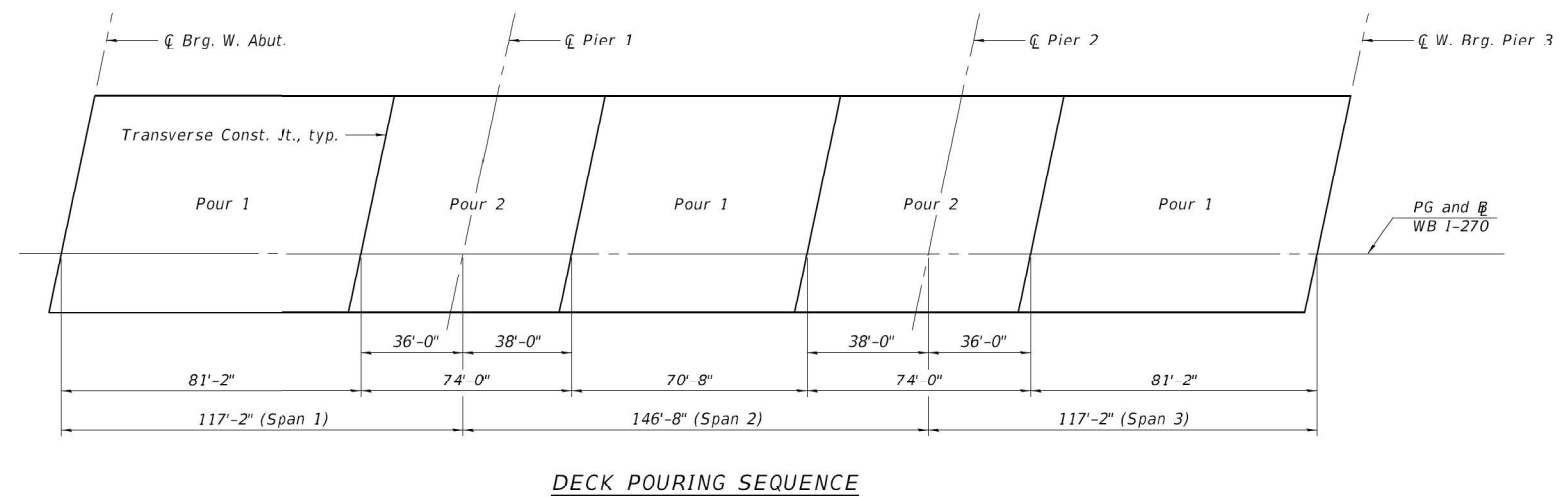
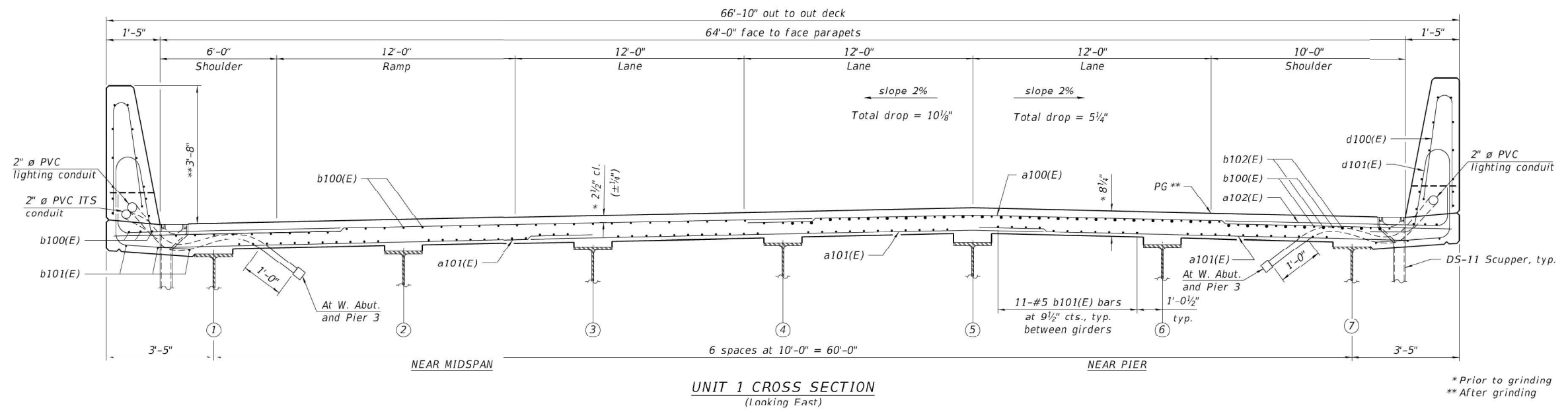
MODEL: VIB A-A-8 (Sheet)
 FILE NAME: c:\p\work\p\184280\0876\03-shd-drawings.dgn

USER NAME = Meseret.sima	DESIGNED -	REVISED -
	DRAWN -	REVISED -
	CHECKED -	REVISED -
PLOT DATE = 3/6/2026	DATE -	REVISED -

STATE OF ILLINOIS
 DEPARTMENT OF TRANSPORTATION

STRUCTURE DETAILS - SN 060-0351(WB)			
SCALE:	SHEET 9	OF 18 SHEETS	STA. TO STA.

F.A.I. RTE.	SECTION	COUNTY	TOTAL SHEETS	SHEET NO.
270	Dist 8 Bridge Painting 2026-1	Madison	21	12
CONTRACT NO. 76V03				
ILLINOIS FED. AID PROJECT				



Note:
When the deck pour is stopped for the day at one or more of the transverse bonded construction joints in the deck pouring sequence as shown, the next pour shall not be made until both of the following are met:

1. At least 72 hours shall have elapsed from the end of the previous pour.
2. The concrete strength shall have attained a minimum flexural strength of 675 psi or a minimum compressive strength of 4000 psi.

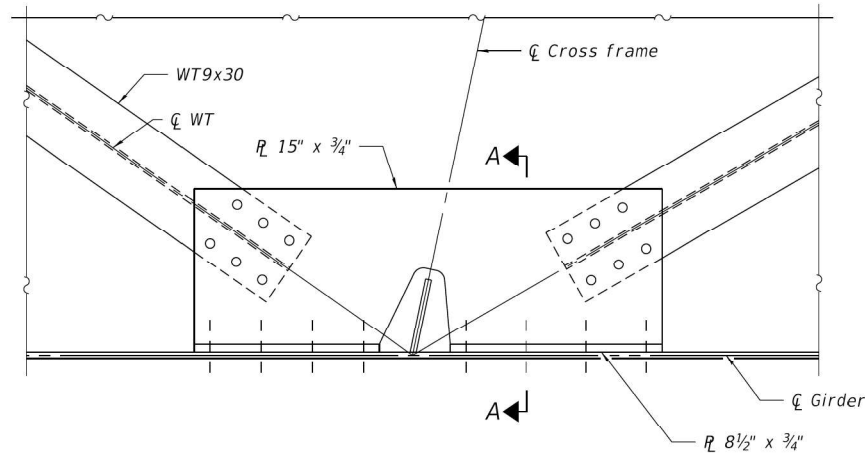
Notes:
For Unit 1 Bill of Material, see sheet 90 of 288.
For Superstructure Details, see sheet 75 of 288.

EXISTING CROSS SECTION

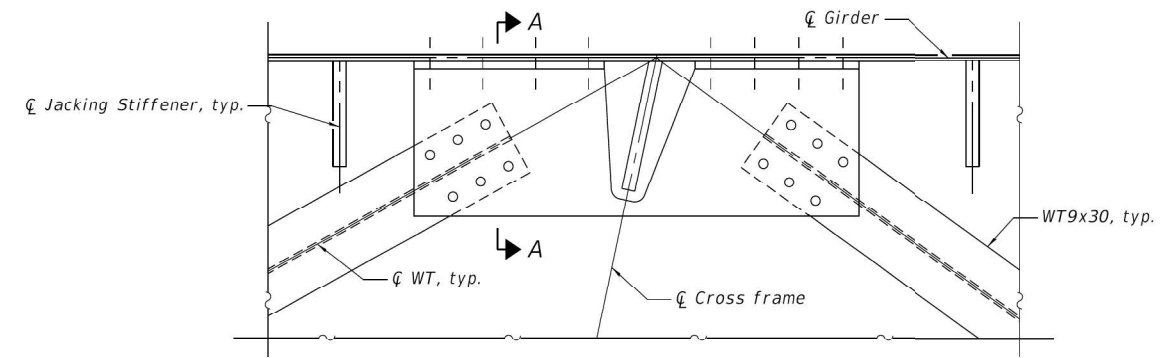
FOR INFORMATION ONLY

MODEL: VIB A-A-9 (Sheet)
FILE NAME: c:\p\work\pvt\islmam\1184280\0876\03-shd-details.dgn

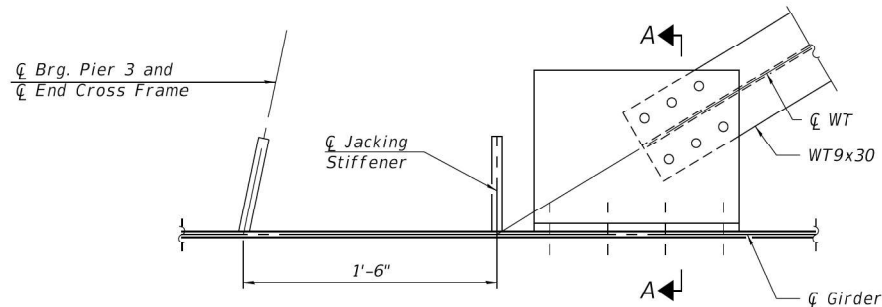
USER NAME = Meseret.sima	DESIGNED -	REVISED -	STATE OF ILLINOIS DEPARTMENT OF TRANSPORTATION	STRUCTURE DETAILS - SN 060-0351(WB)		F.A.I RTE.	SECTION	COUNTY	TOTAL SHEETS	SHEET NO.
	DRAWN -	REVISED -				270	Dist 8 Bridge Painting 2026-1	Madison	21	13
	CHECKED -	REVISED -				CONTRACT NO. 76V03				
PLOT DATE = 3/6/2026	DATE -	REVISED -				ILLINOIS	FED. AID PROJECT			
			SCALE:		SHEET 10 OF 18 SHEETS	STA.	TO STA.			



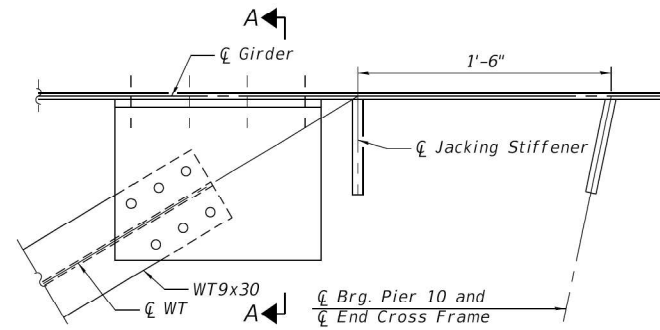
DETAIL 1
(Lateral bracing connection at cross frame)
(See connection detail)



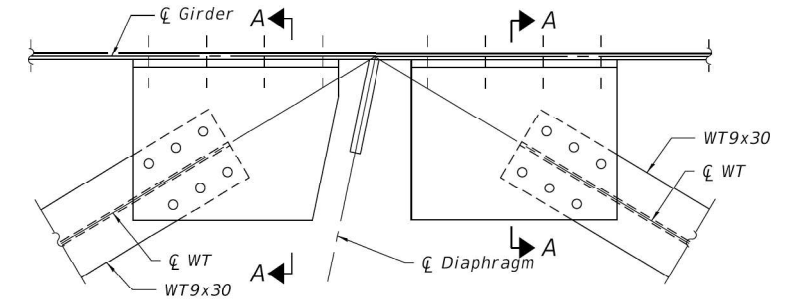
DETAIL 2
(Lateral bracing connection at pier cross frame)
(See connection detail)



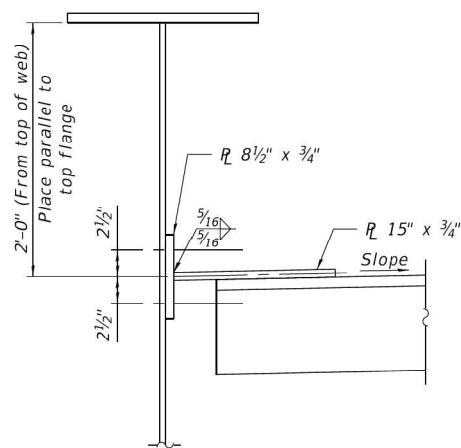
DETAIL 3
(Lateral bracing connection at Pier 3)
(See connection detail)



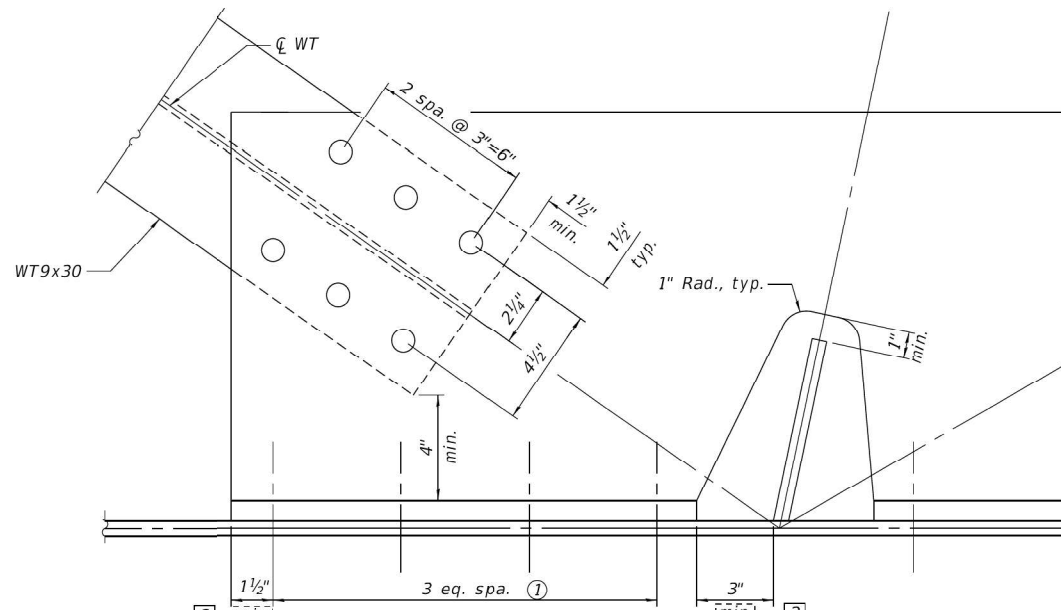
DETAIL 4
(Lateral bracing connection at Pier 10)
(See connection detail)



DETAIL 5
(Lateral bracing connection at Diaphragm)
(See connection detail)



SECTION A-A
(Cross frame and stiffener not shown)



CONNECTION DETAIL

Notes:
All bolts are 7/8" Ø in 1 1/16" Ø holes.
Provide 1 1/2" min. from center of bolt to edge of connected element in any direction.
Two hardened washers required for each set of oversized holes.

① Provide additional bolts as required to limit maximum spacing to 6".

MODEL: T S 3 (Sheet)
FILE NAME: c:\p\work\wis\details\1184280\0876\03-shr-deta11-1.dgn

USER NAME = Meseret.sima	DESIGNED -	REVISED -
	DRAWN -	REVISED -
	CHECKED -	REVISED -
PLOT DATE = 3/6/2026	DATE -	REVISED -

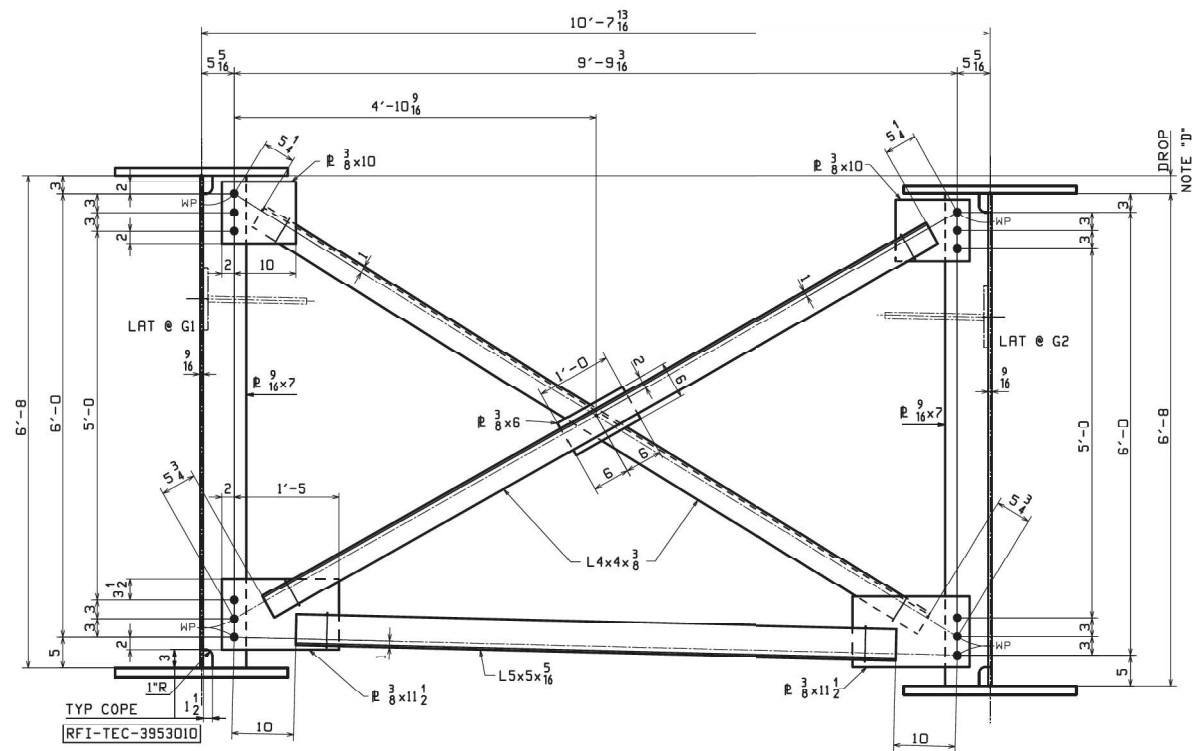
STATE OF ILLINOIS
DEPARTMENT OF TRANSPORTATION

STRUCTURE DETAILS - SN 060-0350 (EB)
SN 060-0351 (WB)

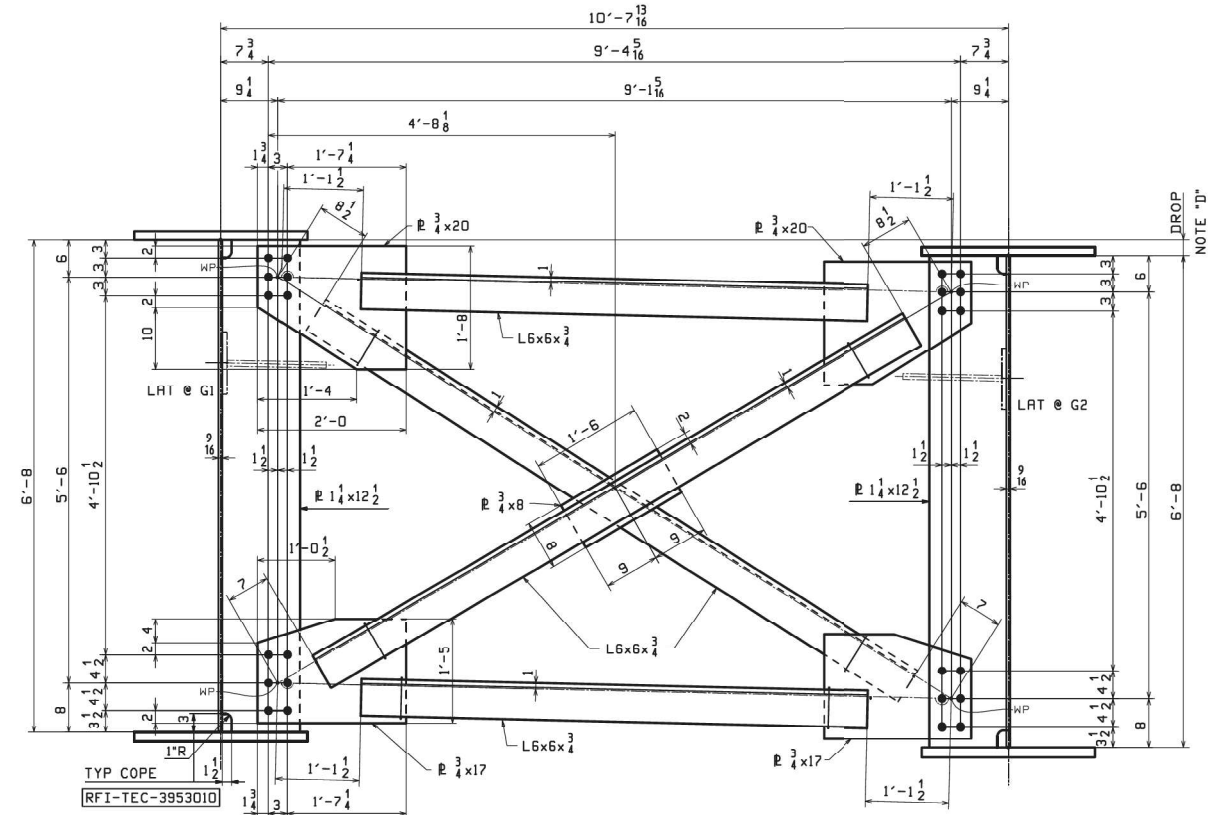
SCALE: SHEET 11 OF 18 SHEETS STA. TO STA.

F.A.I RTE.	SECTION	COUNTY	TOTAL SHEETS	SHEET NO.
270	Dist 8 Bridge Painting 2026-1	Madison	21	14
CONTRACT NO. 76V03				
ILLINOIS FED. AID PROJECT				

FOR INFORMATION ONLY



INT CROSSFRAMES TYPE CF-1
LOOKING UPSTATION



PIER CROSSFRAMES TYPE CF-3
LOOKING UPSTATION

MODEL: T S-4 (Sheet)
 FILE NAME: c:\p\work\wis\m\m\1184280\0876\03-shl-details-1.dgn

FOR INFORMATION ONLY

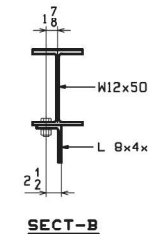
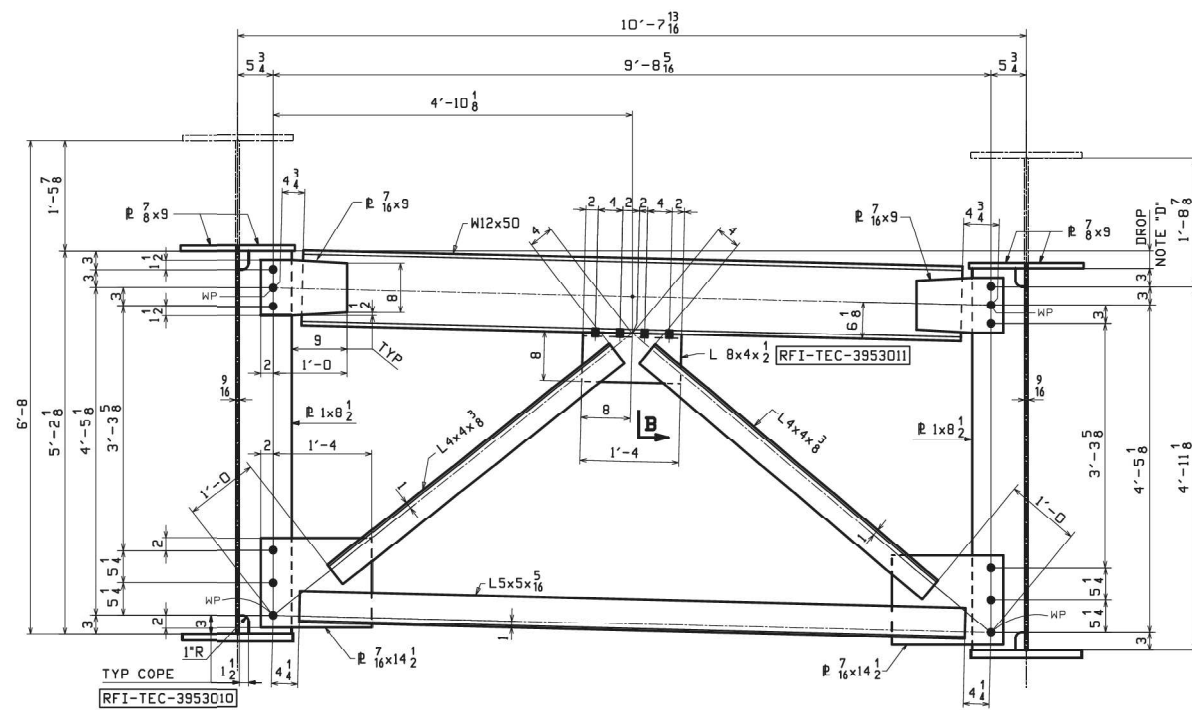
USER NAME = Meseret.sima	DESIGNED -	REVISED -
	DRAWN -	REVISED -
	CHECKED -	REVISED -
PLOT DATE = 3/6/2026	DATE -	REVISED -

STATE OF ILLINOIS
DEPARTMENT OF TRANSPORTATION

STRUCTURE DETAILS - SN 060-0350 (EB)			
SN 060-0351(WB)			
SCALE:	SHEET 12	OF 18 SHEETS	STA. TO STA.

F.A.I RTE.	SECTION	COUNTY	TOTAL SHEETS	SHEET NO.
270	Dist 8 Bridge Painting 2026-1	Madison	21	15
CONTRACT NO. 76V03				
ILLINOIS FED. AID PROJECT				

MODEL: T S-51 (Sheet)
 FILE NAME: c:\p\work\wis\dist\ismam\1184280\0876\03-shr-details-1.dgn



END CROSSFRAMES TYPE CF-2
 PIER 10 LOOKING DOWNSTATION
 PIER 17 LOOKING UP-STATION

FOR INFORMATION ONLY

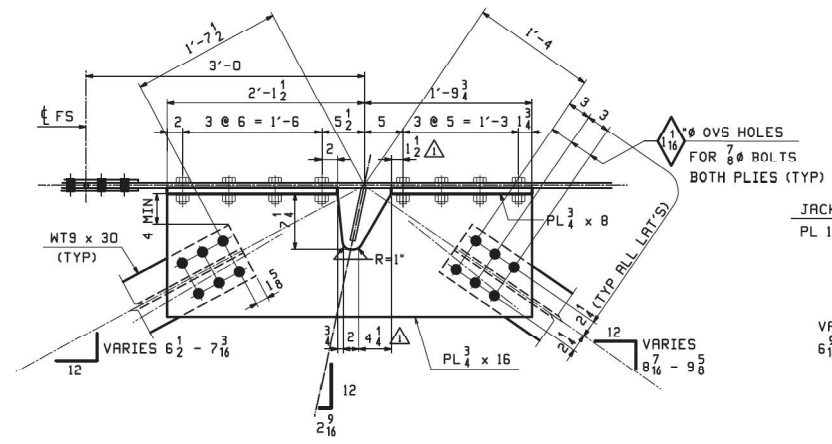
USER NAME = Meseret.sima	DESIGNED -	REVISED -
	DRAWN -	REVISED -
	CHECKED -	REVISED -
PLOT DATE = 3/6/2026	DATE -	REVISED -

**STATE OF ILLINOIS
 DEPARTMENT OF TRANSPORTATION**

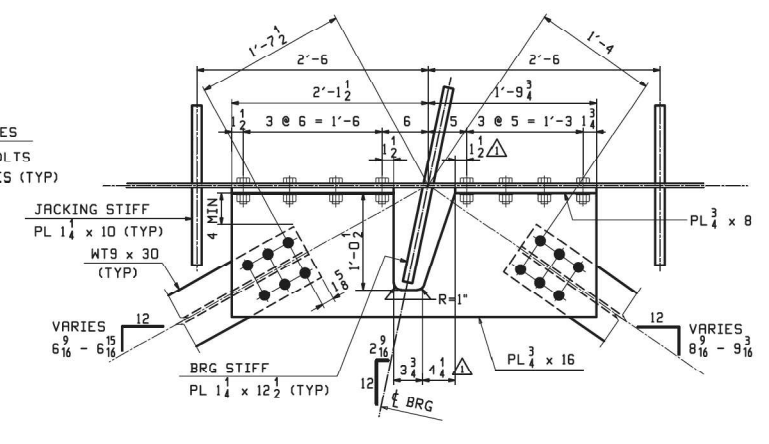
**STRUCTURE DETAILS - SN 060-0350 (EB)
 SN 060-0351(WB)**

SCALE: SHEET 13 OF 18 SHEETS STA. TO STA.

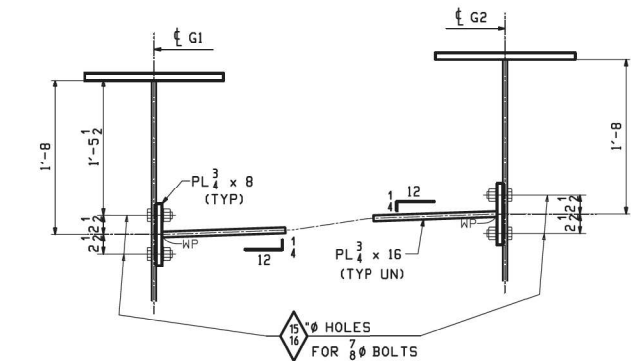
F.A.I RTE.	SECTION	COUNTY	TOTAL SHEETS	SHEET NO.
270	Dist 8 Bridge Painting 2026-1	Madison	21	16
CONTRACT NO. 76V03				
ILLINOIS FED. AID PROJECT				



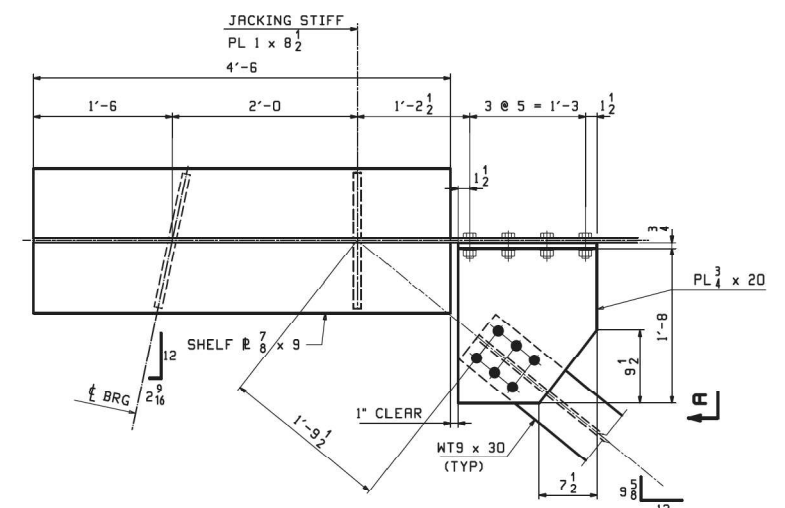
TYP LAT BRACING CONNECTION AT INT CROSSFRAME



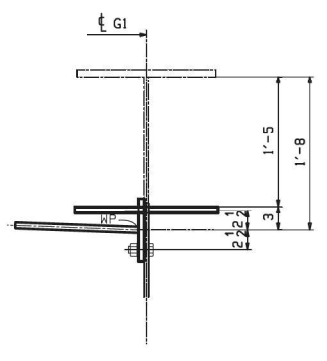
TYP LAT BRACING CONNECTION AT INT PIERS



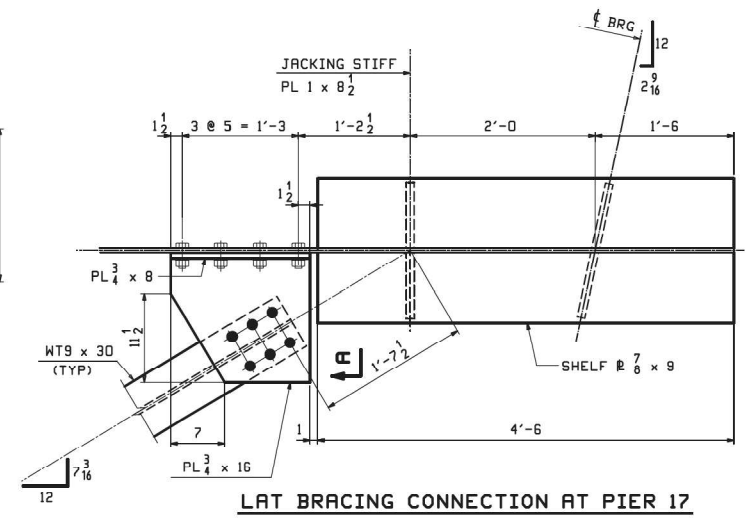
BRACING PLANE - LOOKING UP-STATION



LAT BRACING CONNECTION AT PIER 10



SECT "A"



LAT BRACING CONNECTION AT PIER 17

NO.	DATE	REMARKS	BY
1	04/17/23	REV'D TYP LAT COPE	DPS/T
REVISIONS			

MODEL: T S 6 (Sheet)
FILE NAME: c:\p\work\wis\1184280\03-shr-details-1.dgn

USER NAME = Meseret.sima	DESIGNED -	REVISED -
	DRAWN -	REVISED -
	CHECKED -	REVISED -
PLOT DATE = 3/6/2026	DATE -	REVISED -

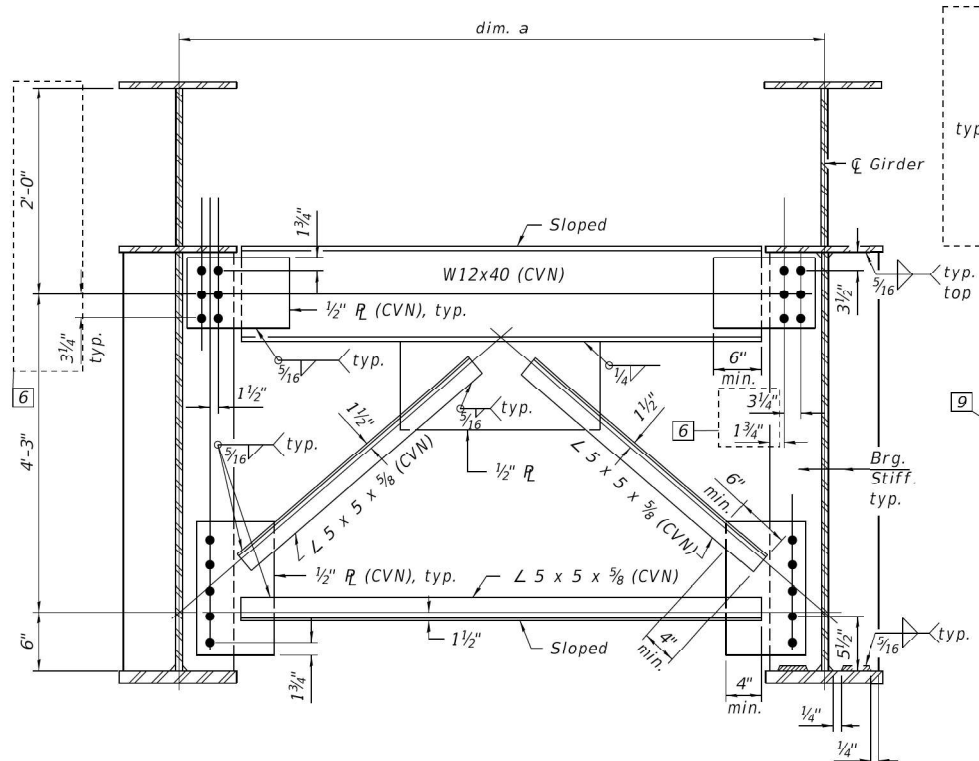
STATE OF ILLINOIS
DEPARTMENT OF TRANSPORTATION

STRUCTURE DETAILS - SN 060-0350 (EB)
SN 060-0351(WB)

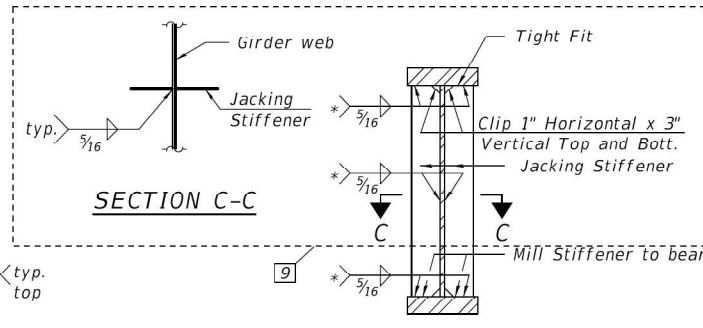
SCALE: SHEET 14 OF 18 SHEETS STA. TO STA.

F.A.I RTE.	SECTION	COUNTY	TOTAL SHEETS	SHEET NO.
270	Dist 8 Bridge Painting 2026-1	Madison	21	17
CONTRACT NO. 76V03				
ILLINOIS FED. AID PROJECT				

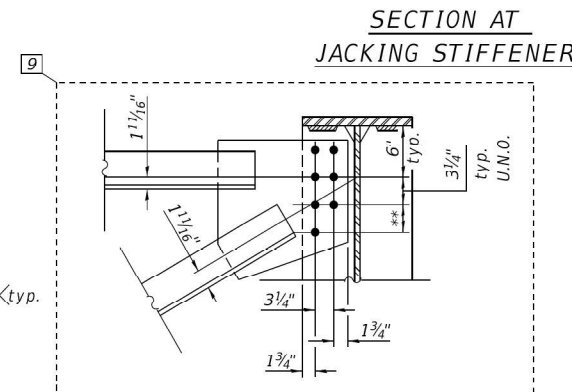
FOR INFORMATION ONLY



CROSS FRAME F AND F1



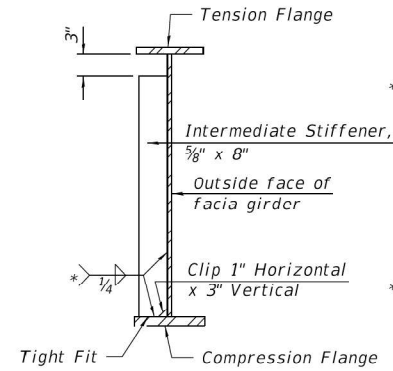
SECTION C-C



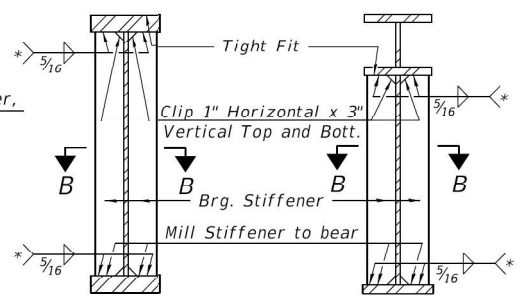
SECTION AT JACKING STIFFENER

** 3/4" for F6 thru F15 and F22 thru F32
5" for F16 thru F21 and F33 thru F37
Top connection shown, bottom connection similar.

CROSS FRAME CONNECTION DETAILS FOR F6 THRU F37



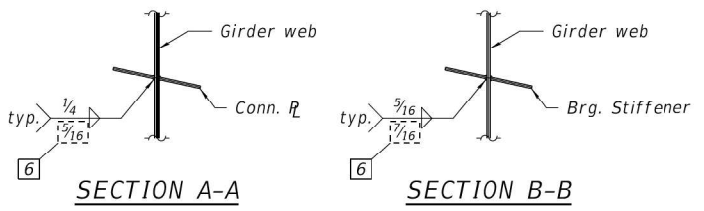
SECTION AT INT. STIFFENER



SECTION AT PIER

SECTION AT GIRDER END

(Facia girders shown, interior girders similar) * Terminate 1/4" (±1/8") from the end of plate intersects.

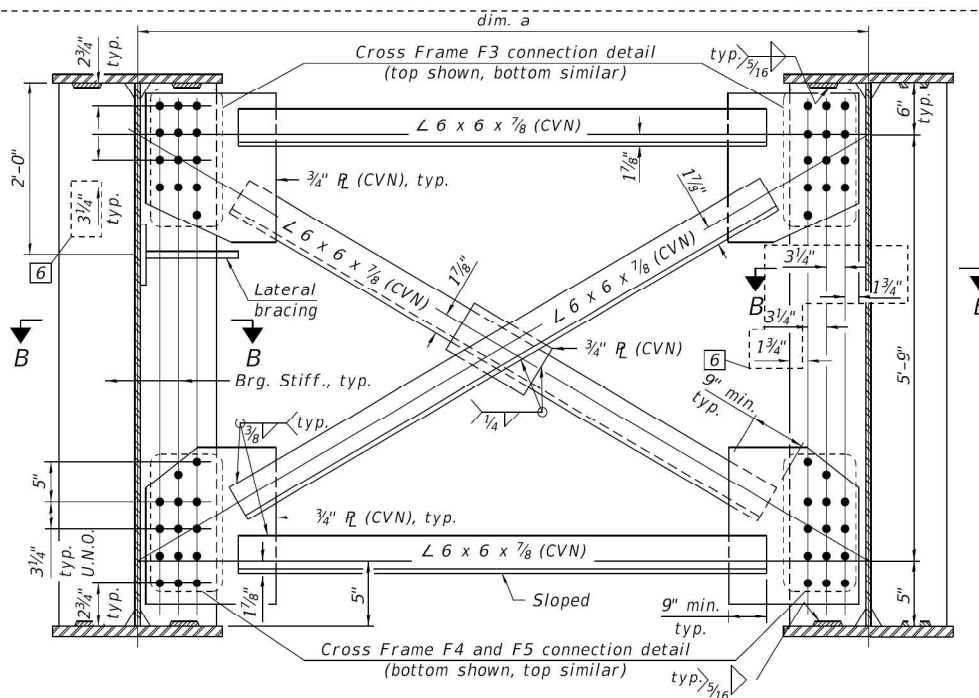


SECTION A-A

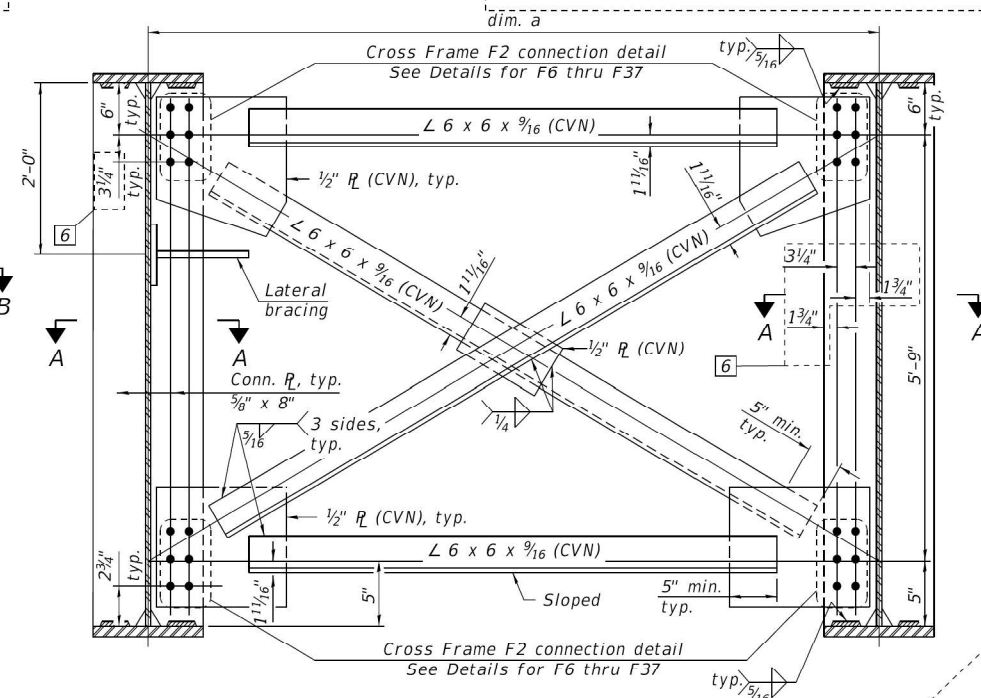
SECTION B-B

CROSS FRAME DIM. a TABLE

Cross Frame	Dim. a	# Req
F	10'-7 ³ / ₁₆ "	9
F1	9'-4 ¹³ / ₁₆ "	2
F2	10'-7 ¹³ / ₁₆ "	419
F3	10'-7 ¹³ / ₁₆ "	29
F4	6'-2 ¹ / ₂ "	1
F5	6'-6"	1
F6	9'-2"	1
F7	8'-11"	1
F8	8'-8"	1
F9	8'-5 ¹ / ₁₆ "	1
F10	8'-2 ¹ / ₁₆ "	1
F11	7'-1 ¹ / ₁₆ "	1
F12	7'-8 ¹ / ₁₆ "	1
F13	7'-5 ¹ / ₈ "	1
F14	7'-2 ¹ / ₁₆ "	1
F15	6'-11 ¹ / ₄ "	1
F16	6'-8 ³ / ₁₆ "	1
F17	6'-5 ¹ / ₁₆ "	1
F18	5'-11 ³ / ₁₆ "	1
F19	5'-8 ³ / ₁₆ "	1
F20	5'-5 ³ / ₁₆ "	1
F21	5'-2 ¹ / ₈ "	1
F22	9'-2 ¹ / ₄ "	1
F23	8'-11 ³ / ₁₆ "	1
F24	8'-8 ¹ / ₁₆ "	1
F25	8'-6 ³ / ₁₆ "	1
F26	8'-3 ¹ / ₁₆ "	1
F27	8'-0 ³ / ₄ "	1
F28	7'-10 ¹ / ₁₆ "	1
F29	7'-7 ¹ / ₁₆ "	1
F30	7'-4 ³ / ₈ "	1
F31	7'-2"	1
F32	6'-11 ³ / ₁₆ "	1
F33	6'-8 ¹ / ₁₆ "	1
F34	6'-3 ¹ / ₁₆ "	1
F35	6'-0 ³ / ₁₆ "	1
F36	5'-9 ¹ / ₁₆ "	1
F37	5'-6 ³ / ₄ "	1



CROSS FRAMES F3 THRU F5



CROSS FRAMES F2, F6 THRU F37

Notes:
 All cross frames or diaphragms between beams or girders shall be installed with erection pins and bolts in accordance with the erection plan approved by the Engineer. Individual cross frames or diaphragms at supports may be temporarily disconnected to install bearing anchor rods.
 All structural steel shall be AASHTO M270 Grade 50.
 All bolts in cross frames shall be 1" ø in 1³/₁₆" ø holes.
 Two hardened washers shall be required for each set of oversized holes.
 "CVN" denotes Charpy-V-Notch impact energy requirements, zone 2.
 Bearing stiffeners, jacking stiffeners, web stiffeners, and connection plates shall be beveled to be flush with web.

FOR INFORMATION ONLY

MODEL: T-S (Sheet)
 FILE NAME: c:\pwworking\slr\m\1184280\03-shd-details-1.dgn

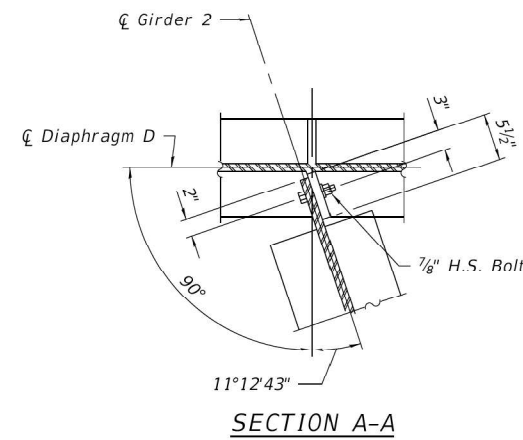
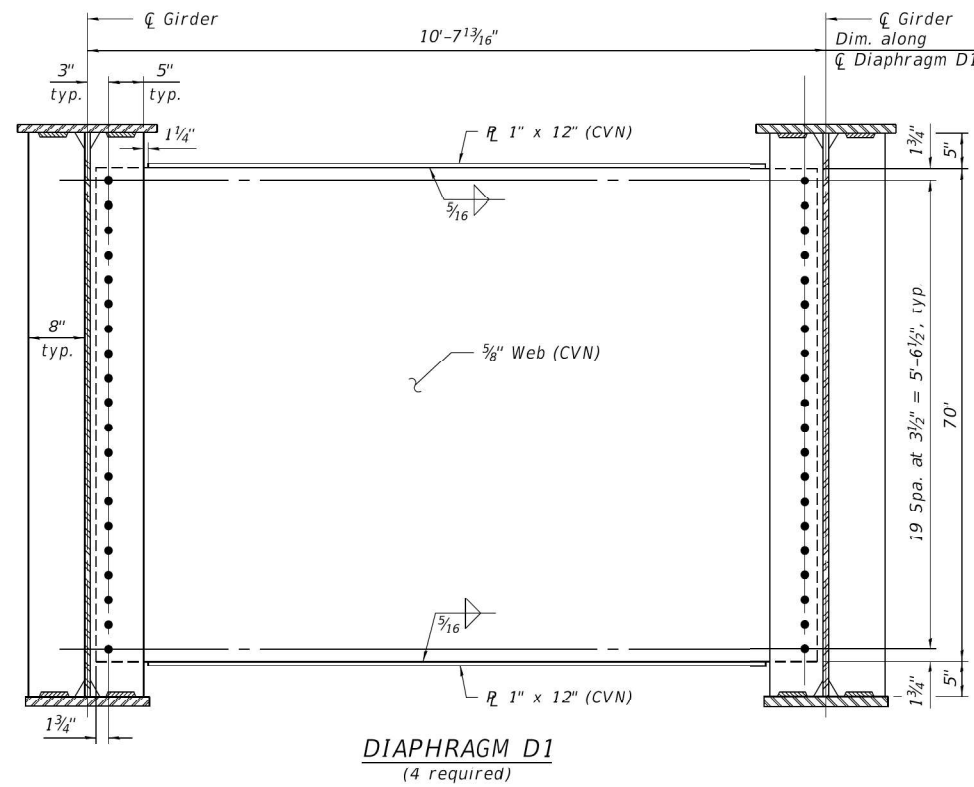
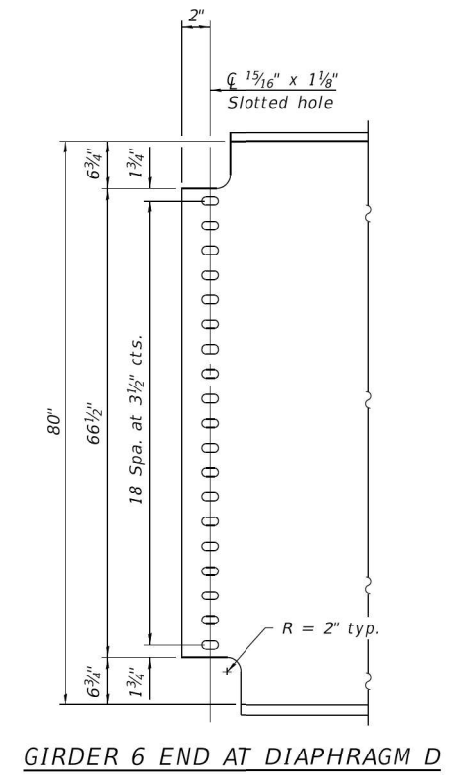
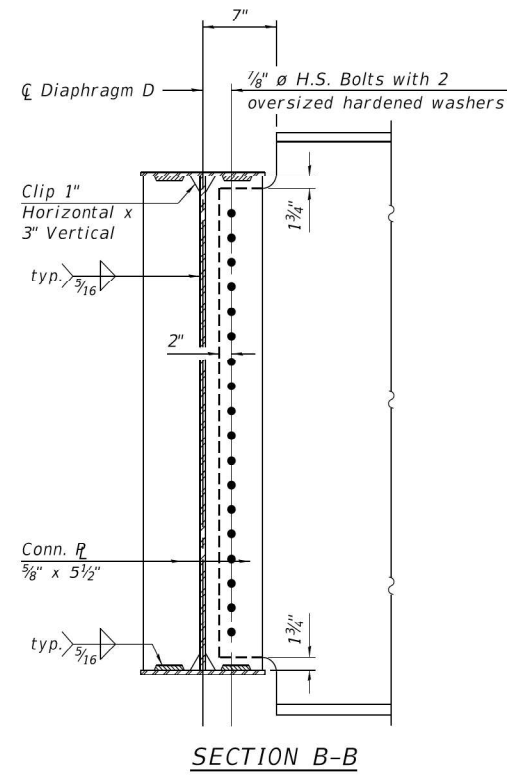
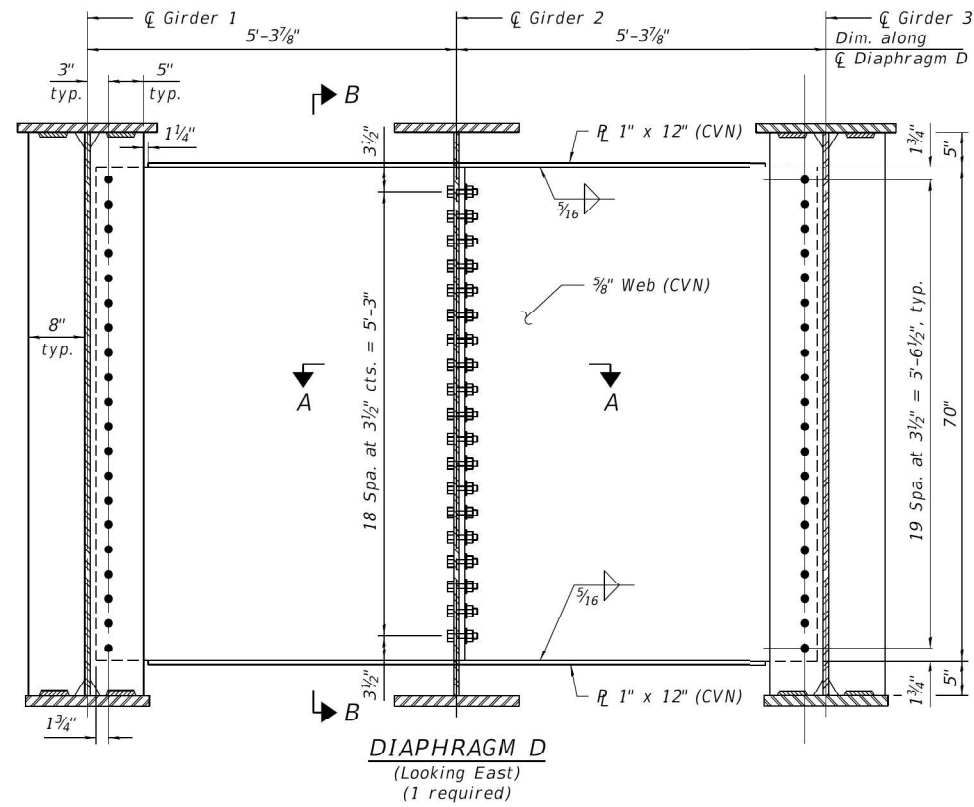
USER NAME = Meseret.sima	DESIGNED -	REVISED -
	DRAWN -	REVISED -
	CHECKED -	REVISED -
PLOT DATE = 3/19/2026	DATE -	REVISED -

STATE OF ILLINOIS
 DEPARTMENT OF TRANSPORTATION

STRUCTURE DETAILS - SN 060-0350 (EB)
 SN 060-0351(WB)

SCALE: SHEET 17 OF 18 SHEETS STA. TO STA.

F.A.I. RTE.	SECTION	COUNTY	TOTAL SHEETS	SHEET NO.
270	Dist 8 Bridge Painting 2026-1	Madison	21	20
CONTRACT NO. 76V03				
ILLINOIS FED. AID PROJECT				



Notes:
 All bolts in diaphragms are 7/8" ϕ in 1 5/16" ϕ holes unless noted otherwise.
 All structural steel shall be AASHTO M270 Grade 50.
 "CVN" denotes Charpy-V-Notch impact energy requirements, zone 2.
 Two hardened washers shall be required for each set of slotted holes.

FOR INFORMATION ONLY

MODEL: T-S-2 (Sheet)
 FILE NAME: c:\pwworking\slm\m\1184280\03-shd-detailed-1.dgn

USER NAME = Meseret.sima	DESIGNED -	REVISED -	STATE OF ILLINOIS DEPARTMENT OF TRANSPORTATION	STRUCTURE DETAILS - SN 060-0350 (EB) SN 060-0351(WB)	F.A.I RTE.	SECTION	COUNTY	TOTAL SHEETS	SHEET NO.	
	DRAWN -	REVISED -			270	Dist 8 Bridge Painting 2026-1	Madison	21	21	
	CHECKED -	REVISED -			CONTRACT NO. 76V03					
PLOT DATE = 3/19/2026	DATE -	REVISED -			SCALE:	SHEET 18	OF 18	SHEETS	STA.	TO STA.