

STATE OF ILLINOIS
DEPARTMENT OF TRANSPORTATION

F.A. RTE.	SECTION	COUNTY	TOTAL SHEETS	SHEET NO.
VAR	DIST 8 BRIDGE REPAIRS 2026-2	VARIOUS	4	1
		ILLINOIS	CONTRACT NO. 76V09	

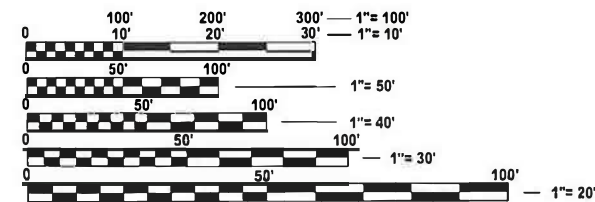
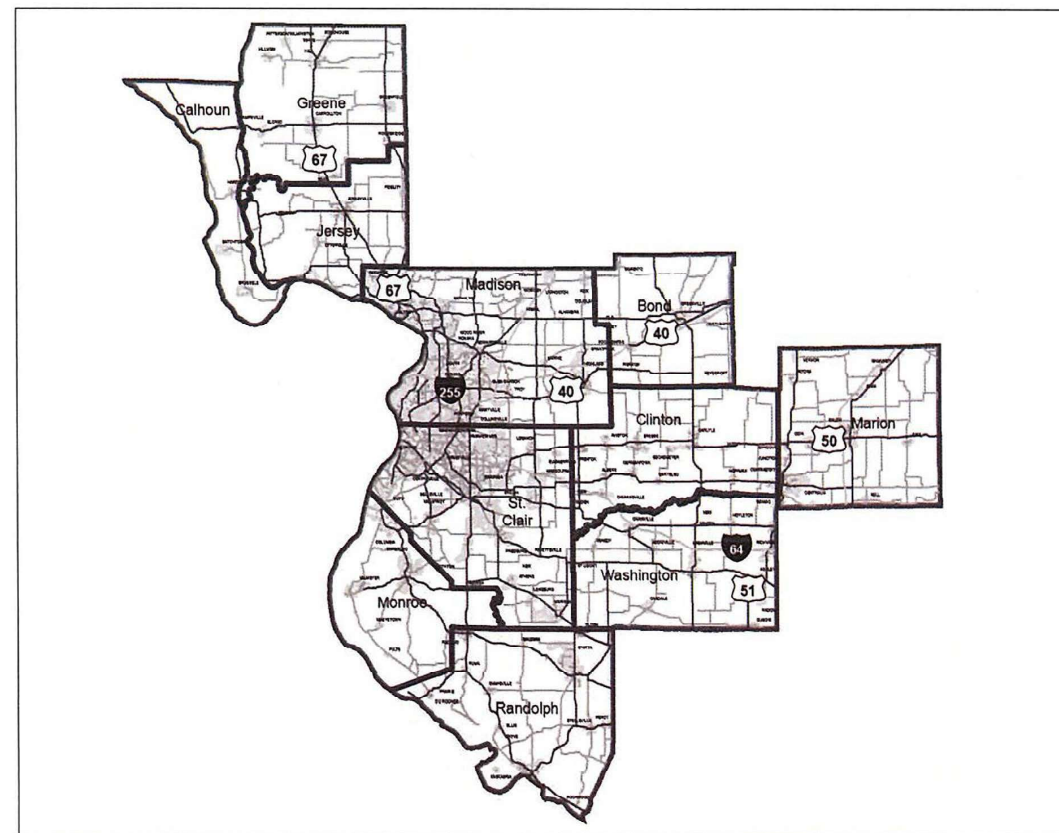
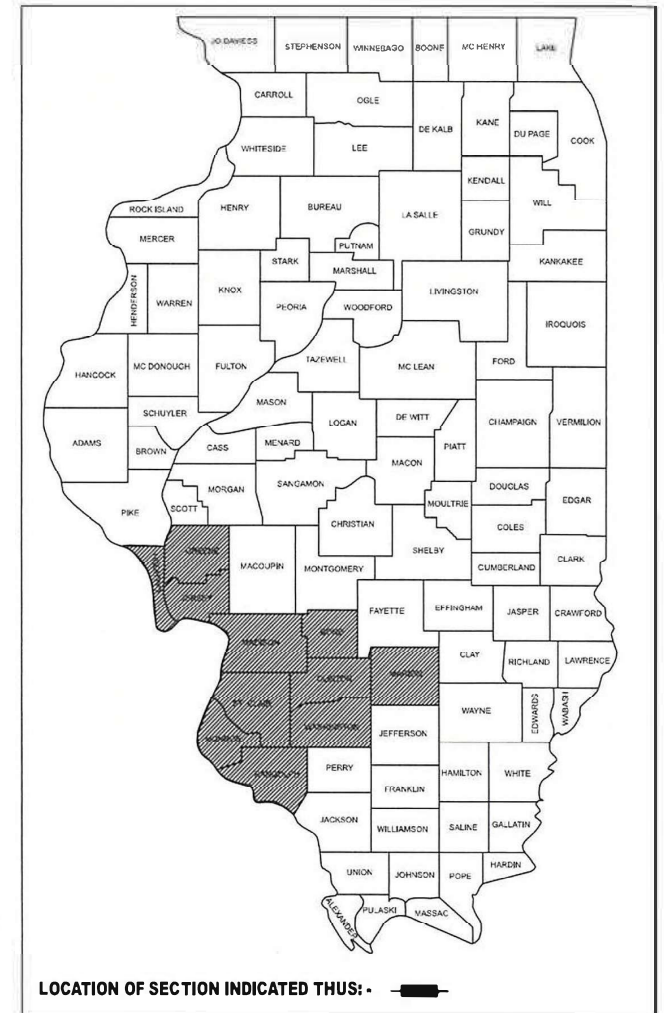
FOR INDEX OF SHEETS, SEE SHEET NO. 2

PROPOSED
HIGHWAY PLANS

VARIOUS ROUTES
SECTION DIST 8 BRIDGE REPAIRS 2026-2
BRIDGE REPAIRS
VARIOUS COUNTY

C-98-077-26

D-98-029-26



FULL SIZE PLANS HAVE BEEN PREPARED USING STANDARD ENGINEERING SCALES. REDUCED SIZED PLANS WILL NOT CONFORM TO STANDARD SCALES. IN MAKING MEASUREMENTS ON REDUCED PLANS, THE ABOVE SCALES MAY BE USED.

J.U.L.I.E.
JOINT UTILITY LOCATION INFORMATION FOR EXCAVATION
1-800-892-0123
OR 811

PROJECT ENGINEER: BILLIE OWEN
PROJECT MANAGER: MIKE BERG

CONTRACT NO. 76V09

NOT TO SCALE

STATE OF ILLINOIS
DEPARTMENT OF TRANSPORTATION

SUBMITTED Mar 15 2026
[Signature]
REGIONAL ENGINEER

May 8 2026
[Signature]
ENGINEER OF DESIGN AND ENVIRONMENT

May 8 2026
[Signature]
DIRECTOR OF HIGHWAYS PROJECT IMPLEMENTATION

PRINTED BY THE AUTHORITY
OF THE STATE OF ILLINOIS

INDEX OF SHEETS

1. COVER SHEET
2. INDEX OF SHEETS, STANDARDS, GENERAL NOTES, AND COMMITMENTS
3. SUMMARY OF QUANTITIES
4. DETAILS

COMMITMENTS

NO COMMITMENTS

STANDARDS

- 000001-09 STANDARD SYMBOLS, ABBREVIATIONS AND PATTERNS
- 001006 DECIMAL OF AN INCH AND OF A FOOT
- 701201-05 LANE CLOSURE, 2L 2W, DAY ONLY 45MPH OR MORE
- 701400-12 APPROACH TO LANE CLOSURE FREEWAY EXPRESSWAY
- 701401-13 LANE CLOSURE FREEWAY EXPRESSWAY
- 701411-09 LANE CLOSURE MULTILANE ENTRANCE OR EXIT RAMP 45MPH OR MORE
- 701428-01 TRAFFIC CONTROL SETUP REMOVAL FREEWAY EXPRESSWAY
- 701446-11 TWO LANE CLOSURE FREEWAY EXPRESSWAY
- 701901-11 TRAFFIC CONTROL DEVICES

GENERAL NOTES

1. NO SURVEY WAS PERFORMED FOR THIS PROJECT AND THE PLANS WERE CREATED USING MICROFILM AND FIELD MEASUREMENTS.
2. THE RESIDENT ENGINEER SHALL VERIFY THE EXISTENCE OF HIGHWAY LIGHTING, INTELLIGENT TRANSPORTATION SYSTEMS (I.T.S.) UTILITIES, AND/OR ELECTRICAL CABLES ASSOCIATED WITH TRAFFIC SIGNALS WITHIN THE PROJECT LIMITS. IF ANY OF THESE EXIST WITHIN THE PROJECT LIMITS, AND IF THESE ITEMS REQUIRE LOCATING, THE CONTRACTOR SHALL BE DIRECTED TO DO SO ACCORDING TO SECTION 803 OF THE STANDARD SPECIFICATIONS. THIS WORK SHALL BE PAID FOR ACCORDING TO ARTICLE 109.04 OF THE STANDARD SPECIFICATIONS.
3. THE DEPARTMENT STRONGLY ENCOURAGES THE PRIME CONTRACTOR AND THEIR APPROVED SUB-CONTRACTORS TO HIRE MINORITY, WOMEN AND DISADVANTAGED INDIVIDUALS FROM ITS FEDERALLY FUNDED HIGHWAY CONSTRUCTION CAREERS TRAINING PROGRAM (HCCTP) TO HELP MEET WORKFORCE AND TRAINEE GOALS. THIS PROGRAM IS TRAINING MINORITIES, WOMEN AND DISADVANTAGED INDIVIDUALS IN HIGHWAY CONSTRUCTION-RELATED SKILLS, E.G., MATH FOR THE TRADES, JOB READINESS, TECHNICAL SKILLS COURSEWORK (CARPENTRY, CONCRETE FLATWORK, BLUEPRINT READING, SITE PLANS, SITE WORK, TOOLS USE, ETC.) AND OSHA 10 HOUR CERTIFICATION, TO PREPARE THEM FOR A CAREER IN THE HIGHWAY CONSTRUCTION TRADES. GRADUATES ARE WELL-TRAINED AND READY TO BECOME PRODUCTIVE ENTRY-LEVEL CONSTRUCTION WORKERS. CONTACT THE DISTRICT 8 EEO OFFICE AT 618-346-3360 AND/OR THE HCCTP COORDINATOR AT 618-874-6528 TO LEARN MORE ABOUT THE PROGRAM AND FOR ASSISTANCE IN MEETING WORKFORCE AND TRAINEE GOALS.
4. ALL TURF AREAS DISTURBED BY THE CONTRACTOR SHALL BE SEEDED, WITH THE APPROPRIATE EROSION CONTROL, AS DIRECTED BY THE ENGINEER, AT THE CONTRACTOR'S EXPENSE.

REV - MS

MODEL: Gennotes [Sheet]
FILE NAME: c:\pw_work\pwwork\miller\ra117537576\09-shh-Gennote.dgn

USER NAME = rahshun.miller	DESIGNED -	REVISED -
	DRAWN -	REVISED -
	CHECKED -	REVISED -
PLOT DATE = 3/26/2026	DATE -	REVISED -

**STATE OF ILLINOIS
DEPARTMENT OF TRANSPORTATION**

**INDEX OF SHEETS, STANDARDS, GENERAL NOTES
AND COMMITMENTS**

SCALE: NTS SHEET 1 OF 1 SHEETS STA. TO STA.

F.A. RTE.	SECTION	COUNTY	TOTAL SHEETS	SHEET NO.
VAR	DIST 8 BRIDGE REPAIRS 2026-2	VARIOUS	4	2
CONTRACT NO. 76V09				
		ILLINOIS	FED. AID PROJECT	

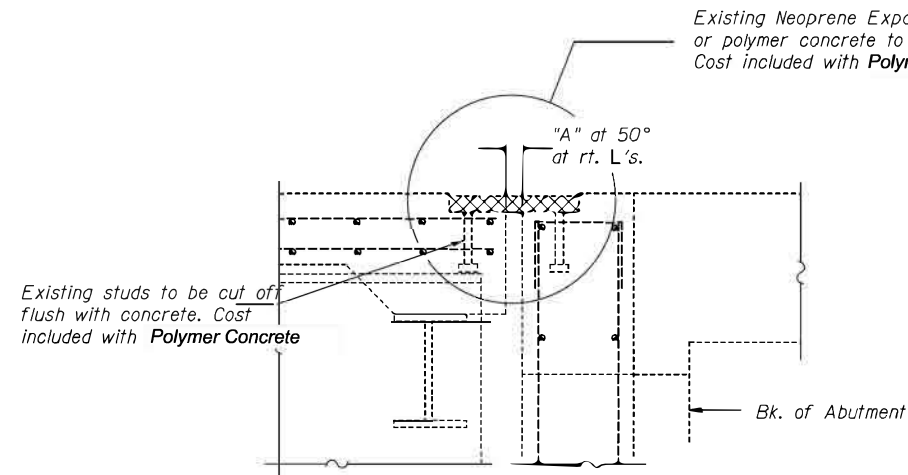
MODEL: SQO (Sheet)
 FILE NAME: c:\p\work\pwr\miller\ra1176375\76\09-sht-SQO.dgn

CODE NO.	ITEM	UNIT	TOTAL QUANTITY	CONSTR. CODE	
				BRIDGE 0013 URBAN	100% STATE
50102400	CONCRETE REMOVAL	CU YD	24	24	
50300255	CONCRETE SUPERSTRUCTURE	CU YD	24	24	
50800205	REINFORCEMENT BARS, EPOXY COATED	POUND	800	800	
53016000	DECK SLAB REPAIR (PARTIAL)	SQ YD	100	100	
70100205	TRAFFIC CONTROL AND PROTECTION, STANDARD 701401	EACH	40	40	
70100420	TRAFFIC CONTROL AND PROTECTION, STANDARD 701411	EACH	18	18	
70100430	TRAFFIC CONTROL AND PROTECTION, STANDARD 701446	EACH	20	20	
X7010101	TRAFFIC CONTROL AND PROTECTION, STANDARD 701201(SPECIAL)	EACH	12	12	
70107025	CHANGEABLE MESSAGE SIGN	CAL DA	800	800	
X5051204	STRUCTURAL STEEL REMOVAL	POUND	6000	6000	
X5051206	STRUCTURAL STEEL REPAIR	POUND	24000	24000	
Z0008759	CALL OUT	EACH	80	80	
Z0021920	SILICONE JOINT SEALER (SPECIAL)	FOOT	9000	9000	
Z0041895	POLYMER CONCRETE	CU FT	350	350	

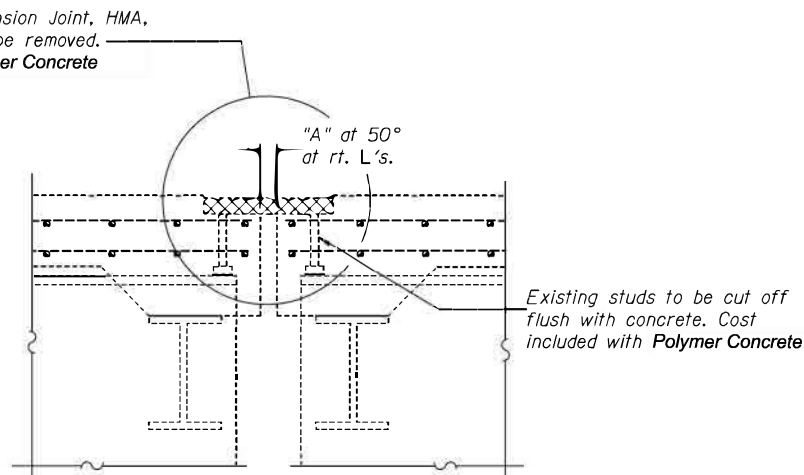
REV - MS

USER NAME = rahshun.miller	DESIGNED -	REVISED -	STATE OF ILLINOIS DEPARTMENT OF TRANSPORTATION	SUMMARY OF QUANTITIES				F.A. RTE.	SECTION	COUNTY	TOTAL SHEETS	SHEET NO.		
	DRAWN -	REVISED -		SCALE: NTS	SHEET 1	OF 1	SHEETS	STA.	TO STA.	VAR	DIST 8 BRIDGE REPAIRS 2026-2	VARIOUS	4	3
	CHECKED -	REVISED -		CONTRACT NO. 76V09										
PLOT DATE = 3/26/2026	DATE -	REVISED -		ILLINOIS FED. AID PROJECT										

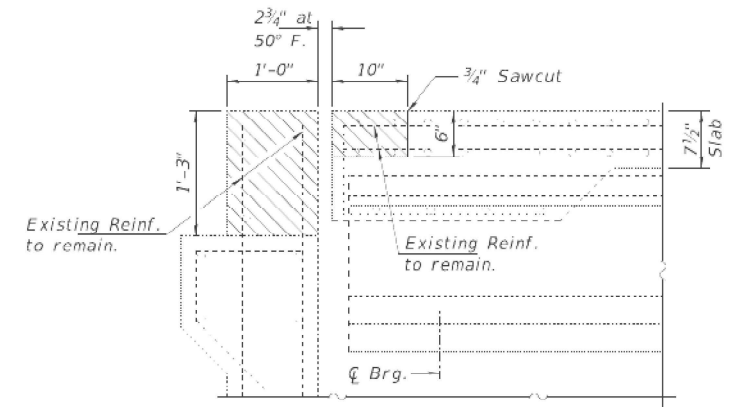
JOINT OPENING ALONG THE DIRECTION OF TRAFFIC CAN NOT EXCEED 4".



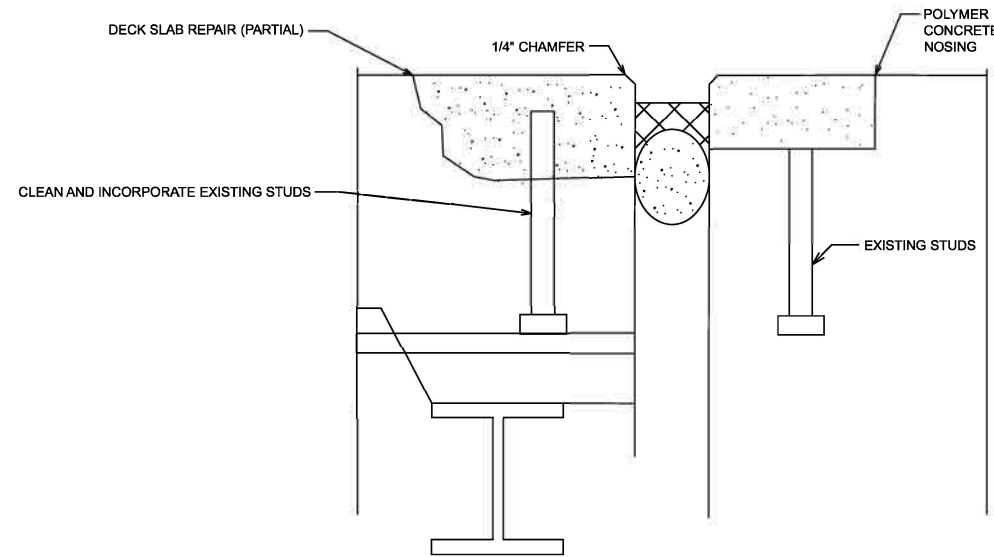
**EXISTING EXPANSION JOINT
REMOVAL AT ABUTMENTS**



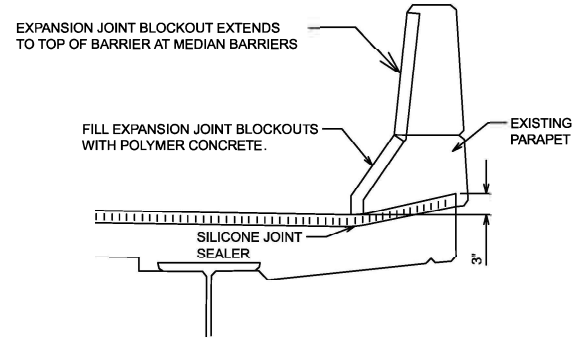
**EXISTING EXPANSION JOINT
REMOVAL AT PIERS**



REMOVAL DETAIL

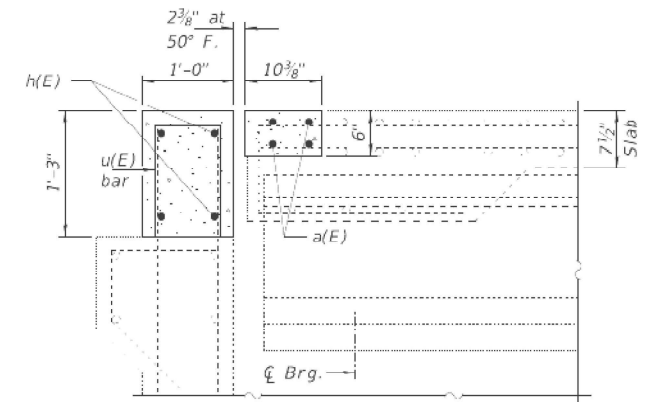


**DECK SLAB REPAIR (PARTIAL)
(VARIOUS LOCATIONS)**

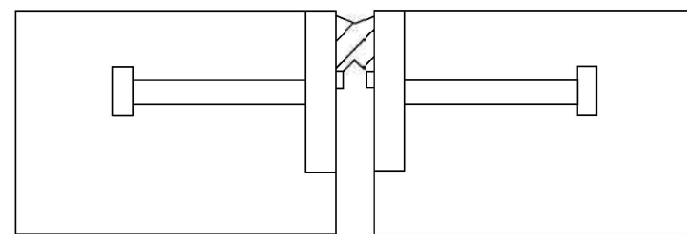


PARAPET DETAIL

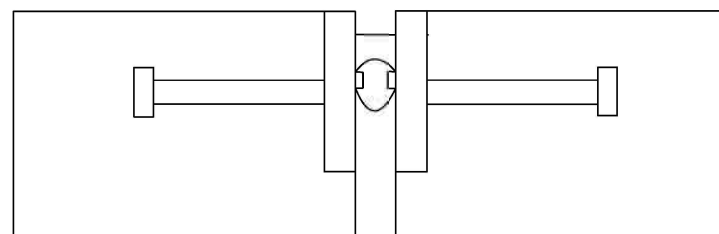
JOINT OPENING IS PARALLEL TO SKEW OUT TO THE INSIDE FACE OF PARAPET, THEN TURNS 90° TO CENTERLINE OF ROADWAY. SPECIAL CARE SHALL BE TAKEN TO ENSURE THAT SILICONE FORMS A WATERTIGHT SEAL WITH THE CONCRETE.



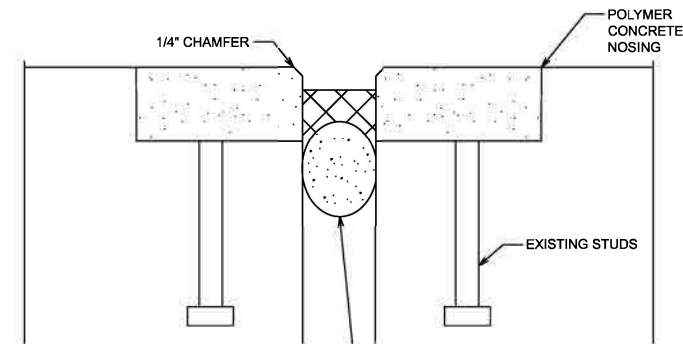
REPLACEMENT DETAIL



EXISTING P/JF JOINT WITH ARMOR ANGLES



PROPOSED SILICONE JOINT WITH ARMOR ANGLES



PROPOSED SILICONE JOINT SEALER

BACKING ROD, DIAM. TO BE EQUAL TO JOINT WIDTH AT TIME OF INSTALLATION PLUS 25%.

MODEL: Detail (Sheet)
FILE NAME: c:\pwworkspace\miller\raj\17537676\09-sht-Details.dgn

USER NAME = rahshun.miller	DESIGNED -	REVISED -
	DRAWN -	REVISED -
	CHECKED -	REVISED -
PLOT DATE = 3/23/2026	DATE -	REVISED -

**STATE OF ILLINOIS
DEPARTMENT OF TRANSPORTATION**

DETAILS

SCALE: NTS SHEET 1 OF 1 SHEETS STA. TO STA.

F.A. RTE.	SECTION	COUNTY	TOTAL SHEETS	SHEET NO.
VAR	DIST 8 BRIDGE REPAIRS 2026-2	VARIOUS	4	4
			CONTRACT NO. 78V09	
ILLINOIS FE DAID PROJE CT				