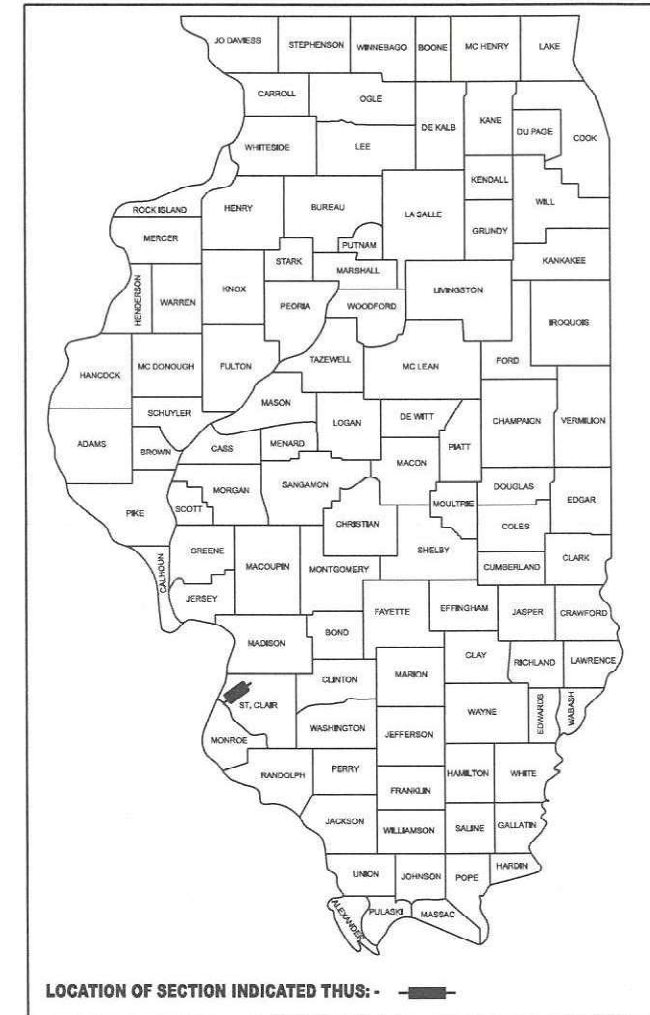


STATE OF ILLINOIS
DEPARTMENT OF TRANSPORTATION

F.A.U. RTIC.	SECTION	COUNTY	TOTAL SHEETS	SHEET NO.
9228A	(Z-1)PP-1	ST. CLAIR	8	1
		ILLINOIS	CONTRACT NO. 76V12	

D-98-080-26



FOR INDEX OF SHEETS, SEE SHEET NO. 2

TRAFFIC DATA

26TH ST.

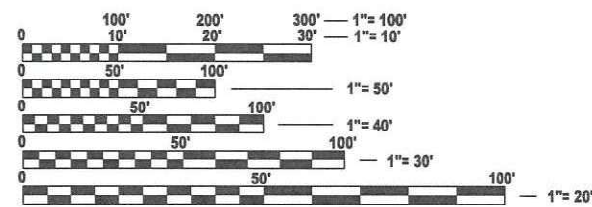
2023 ADT = 6150 (ACTUAL)
2026 ADT = 6200 (ESTIMATED)
2046 ADT = 6450 (ESTIMATED)
SU = 5.7% MU = 4.1%

FUNCTIONAL CLASSIFICATION: MINOR ARTERIAL

PROPOSED
HIGHWAY PLANS

FAU ROUTE 9228A (26TH ST / CH 52)
SECTION (Z-1)PP-1
PATCHING AND SLURRY SEAL
ST. CLAIR COUNTY

C-98-080-26

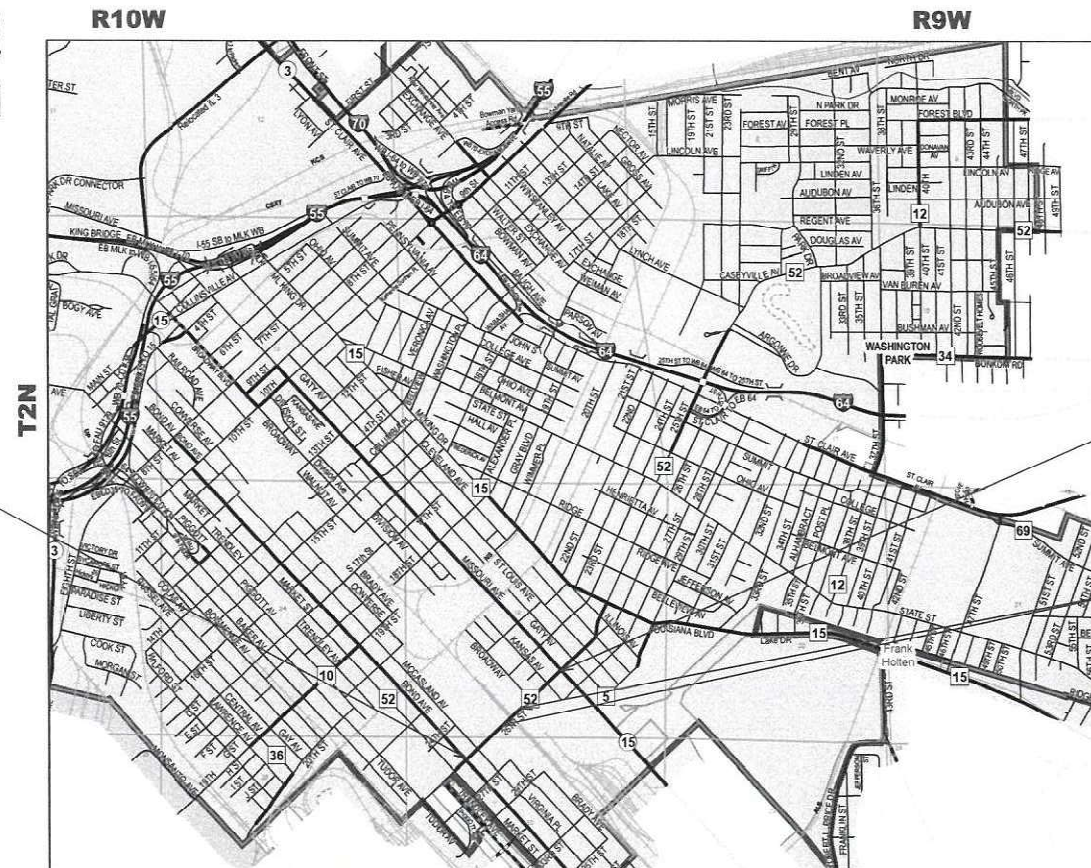


FULL SIZE PLANS HAVE BEEN PREPARED USING STANDARD ENGINEERING SCALES. REDUCED SIZED PLANS WILL NOT CONFORM TO STANDARD SCALES. IN MAKING MEASUREMENTS ON REDUCED PLANS, THE ABOVE SCALES MAY BE USED.

J.U.L.I.E.
JOINT UTILITY LOCATION INFORMATION FOR EXCAVATION
1-800-892-0123
OR 811

PROJECT ENGINEER: BILLIE OWEN
PROJECT MANAGER: MIKE BERG

CONTRACT NO. 76V12



BEGIN PROJECT
(BOND AVE.)
STA 0+28.00
LAT: 38.600463
LONG: -90.141472

END PROJECT
(IL 15)
STA 27+21.00
LAT: 38.605527
LONG: -90.134567

BRIDGE OMISSION
(SN 082-0131)
STA 11+60 TO STA 16+08
(448 FT)

NOT TO SCALE

GROSS LENGTH = 2693 FT. = 0.51 MILE
NET LENGTH = 2245 FT. = 0.43 MILE

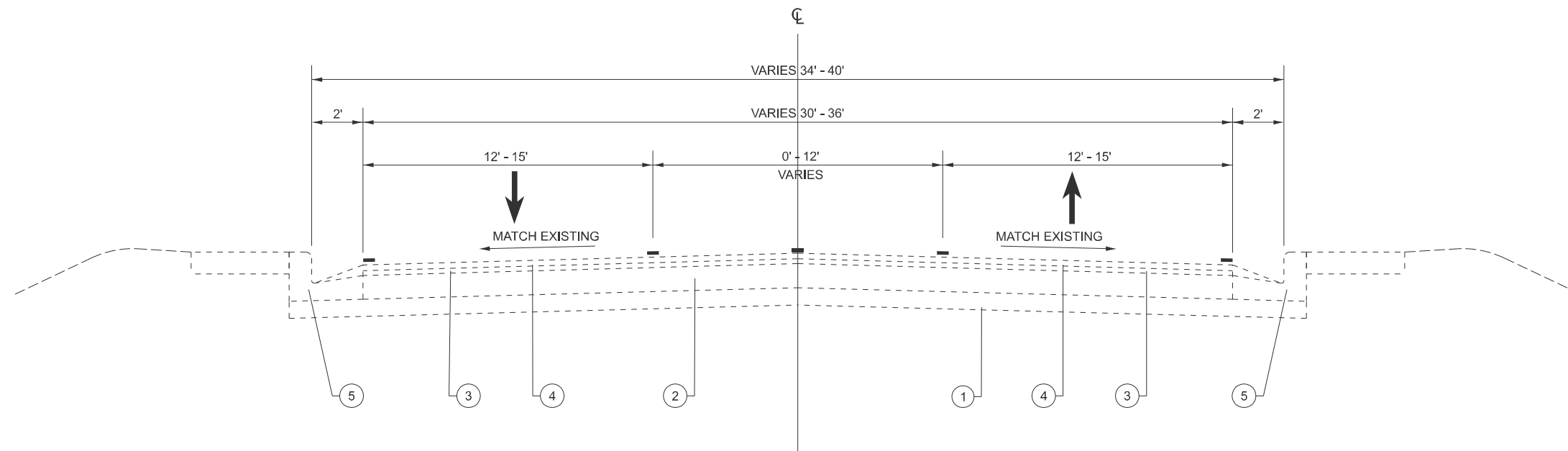
STATE OF ILLINOIS
DEPARTMENT OF TRANSPORTATION

SUBMITTED Mar 05 2026
[Signature] REGIONAL ENGINEER

May 8 2026
[Signature] ENGINEER OF DESIGN AND ENVIRONMENT

May 8 2026
[Signature] DIRECTOR OF HIGHWAYS PROJECT IMPLEMENTATION

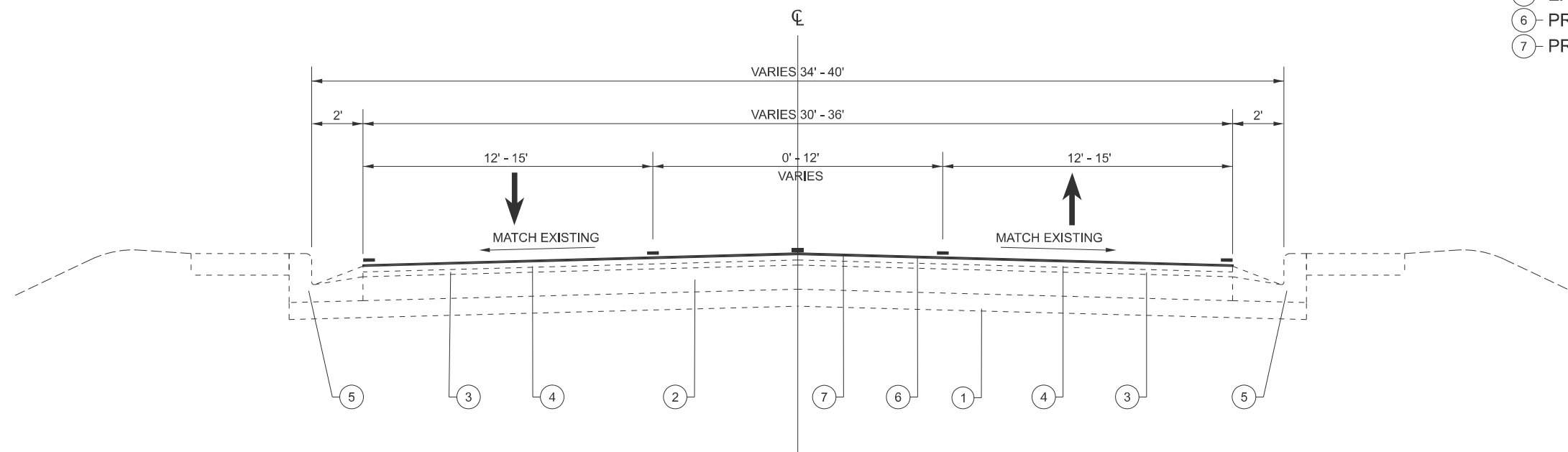
PRINTED BY THE AUTHORITY
OF THE STATE OF ILLINOIS



**EXISTING TYPICAL SECTION
26TH ST.**
STA. 0+28 TO STA. 11+60
(BRIDGE OMISSION: STA. 11+60 TO STA. 16+08)
STA. 16+08 TO STA. 27+21

LEGEND

- ① - EXISTING SUBBASE COURSE - 4"
- ② - EXISTING PCC PAVEMENT - 9"
- ③ - EXISTING LEVELING BINDER (MM) - 3/4"
- ④ - EXISTING HMA SURFACE COURSE, CLASS I, MIX D - 1 1/4"
- ⑤ - EXISTING CURB AND GUTTER
- ⑥ - PROPOSED ASPHALTIC EMULSION SLURRY SEAL
- ⑦ - PROPOSED BITUMINOUS MATERIAL (TACK COAT)



**PROPOSED TYPICAL SECTION
26TH ST.**
STA. 0+28 TO STA. 11+60
(BRIDGE OMISSION: STA. 11+60 TO STA. 16+08)
STA. 16+08 TO STA. 27+21

MODEL: Typical Sections (Sheet)
FILE NAME: c:\p\work\pav\26th\26thtypicals.dgn

USER NAME = david.l.shook	DESIGNED -	REVISED -
	DRAWN -	REVISED -
	CHECKED -	REVISED -
PLOT DATE = 3/17/2026	DATE -	REVISED -

**STATE OF ILLINOIS
DEPARTMENT OF TRANSPORTATION**

TYPICAL SECTIONS

SCALE: NTS SHEET 1 OF 1 SHEETS STA. TO STA.

F.A.U. RTE.	SECTION	COUNTY	TOTAL SHEETS	SHEET NO.
9228A	(Z-1)PP-1	ST. CLAIR	8	5
CONTRACT NO. 76V12				
ILLINOIS FED. AID PROJECT				

