

STATE OF ILLINOIS
DEPARTMENT OF TRANSPORTATION

FAI RTE.	SECTION	COUNTY	TOTAL SHEETS	SHEET NO.
64	D9 Bridge Paint 2026-2	White	15	1
		ILLINOIS	CONTRACT NO. 78C15	

D-99-032-26



FOR INDEX OF SHEETS, SEE SHEET NO. 3

PROPOSED HIGHWAY PLANS

FAI ROUTE 64 (I-64)
SECTION D9 BRIDGE PAINT 2026-2
PROJECT
BRIDGE PAINT
WHITE COUNTY

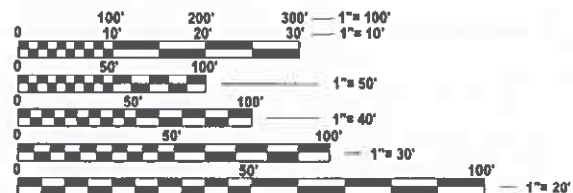
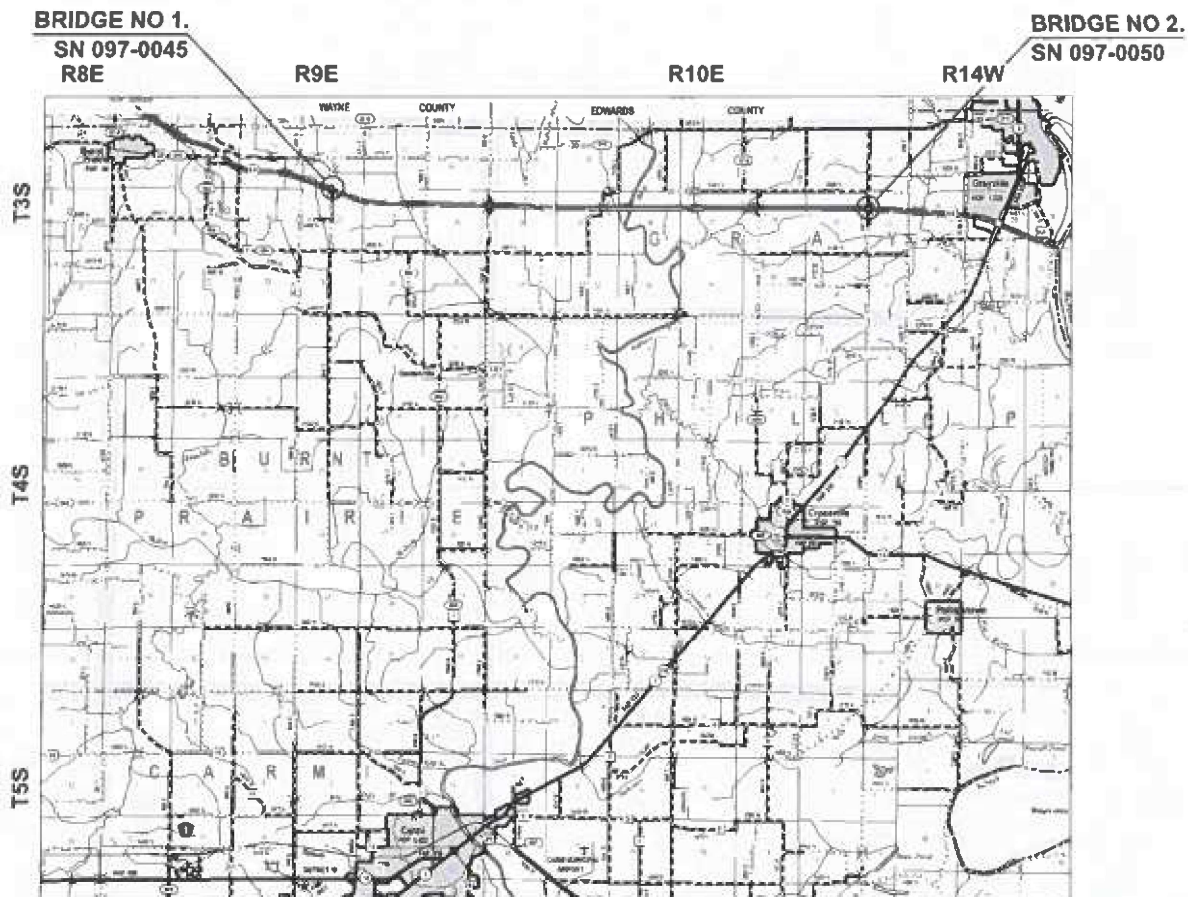
C-99-064-26

TOWNSHIPS

SN 097-0045: BURNT PRAIRIE
SN 097-0050: GRAY

TRAFFIC DATA

2026 ADT = 11,100
42.34% TRUCKS



FULL SIZE PLANS HAVE BEEN PREPARED USING STANDARD ENGINEERING SCALES. REDUCED SIZED PLANS WILL NOT CONFORM TO STANDARD SCALES. IN MAKING MEASUREMENTS ON REDUCED PLANS, THE ABOVE SCALES MAY BE USED.

J.U.L.I.E.
JOINT UTILITY LOCATION INFORMATION FOR EXCAVATION
1-800-892-0123
OR 811

PROJECT ENGINEER: EHREN KIRBY
PROJECT MANAGER: NATHANIEL MORRIS

CONTRACT NO. 78C15

STRUCTURE LENGTH: SN 097-0045 = 251 FEET
SN 097-0050 = 235 FEET

STATE OF ILLINOIS
DEPARTMENT OF TRANSPORTATION

SUBMITTED Feb 18 20 26
Lora S. Remington
REGIONAL ENGINEER

May 8 20 26
[Signature]
ENGINEER OF DESIGN AND ENVIRONMENT

May 8 20 26
[Signature]
DIRECTOR OF HIGHWAYS PROJECT IMPLEMENTATION

PRINTED BY THE AUTHORITY
OF THE STATE OF ILLINOIS

INDEX

<u>SHEET NO.</u>	<u>DESCRIPTION</u>
1	COVER SHEET
2	SIGNATURE SHEET
3	INDEX OF SHEETS, GENERAL NOTES, & HIGHWAY STANDARDS
4	SUMMARY OF QUANTITIES
5	SCHEDULES AND AREAS OF CLEANING AND PAINTING
6	STAGE CONSTRUCTION DETAILS
7-11	SN 097-0045 STRUCTURE INFORMATION
12-15	SN 097-0050 STRUCTURE INFORMATION

GENERAL NOTES

THE CONTRACTOR IS REQUIRED TO BE SSPC QP1 AND SSPC QP2 CERTIFIED

PLAN DIMENSIONS AND DETAILS RELATIVE TO EXISTING PLANS ARE SUBJECT TO ROUTINE VARIATIONS. THE CONTRACTOR SHALL FIELD VERIFY EXISTING DIMENSIONS AND DETAILS AFFECTING NEW CONSTRUCTION AND MAKE NECESSARY APPROVED ADJUSTMENTS PRIOR TO CONSTRUCTION OR ORDERING OF MATERIALS. SUCH VARIATIONS SHALL NOT BE CAUSE FOR ADDITIONAL COMPENSATION FOR A CHANGE IN SCOPE OF THE WORK. HOWEVER, THE CONTRACTOR WILL BE PAID FOR THE QUANTITY ACTUALLY FURNISHED AT THE UNIT PRICE BID FOR THE WORK.

CLEANING AND PAINTING OF THE EXISTING STRUCTURAL STEEL SHALL BE AS SPECIFIED IN THE SPECIAL PROVISIONS FOR "CLEANING AND PAINTING EXISTING STEEL STRUCTURES" AND "CONTAINMENT AND DISPOSAL OF LEAD PAINT CLEANING RESIDUES." ALL STRUCTURAL STEEL SHALL BE CLEANED PER NEAR WHITE BLAST CLEANING-SSPC-SP10. ALL STEEL SHALL BE PAINTED ACCORDING TO THE REQUIREMENTS OF PAINT SYSTEM 1-OZ/E/U. THE COLOR OF THE FINAL FINISH COAT FOR ALL INTERIOR STEEL SHALL BE GRAY, MUNSELL NO. 5B 7/1. THE COLOR OF THE FINAL FINISH COAT FOR THE EXTERIOR STEEL SURFACES AND BOTTOM FLANGE OF THE FASCIA BEAMS SHALL BE BLUE, MUNSELL NO. 10B 3/6.

2 AIR MONITORS ARE REQUIRED TO MONITOR ABRASIVE BLASTING OPERATIONS AT BRIDGE NO. 2 (SN 097-0050)

COMMITMENTS: NONE.

HIGHWAY STANDARDS

000001-09 STANDARD SYMBOLS, ABBREVIATIONS, AND PATTERNS

001006 DECIMAL OF AN INCH AND OF A FOOT

701101-05 OFF-ROAD OPERATIONS, MULTILANE, 15 FT (4.5M) TO 24 IN (600MM) FROM PAVEMENT EDGE

701106-02 OFF-ROAD OPERATIONS, MULTILANE, MORE THAN 15 FT (4.5M) AWAY

701400-12 APPROACH TO LANE CLOSURE, FREEWAY_EXPRESSWAY

701402-12 LANE CLOSURE, FREEWAY/EXPRESSWAY WITH BARRIER

701428-01 TRAFFIC CONTROL SETUP AND REMOVAL FREEWAY/EXPRESSWAY

701901-11 TRAFFIC CONTROL DEVICES

704001-08 TEMPORARY CONCRETE BARRIER

**STATE OF ILLINOIS
DEPARTMENT OF TRANSPORTATION**

INDEX, STANDARDS, & GENERAL NOTES

SCALE: SHEET 1 OF 1 SHEETS STA. TO STA.

F.A.I RTE.	SECTION	COUNTY	TOTAL SHEETS	SHEET NO.
64	D9 Bridge Paint 2026-2	White	15	3
CONTRACT NO. 78C15				
ILLINOIS FED. AID PROJECT				

USER NAME = nathaniel.morris	DESIGNED -	REVISED -
	DRAWN -	REVISED -
	CHECKED -	REVISED -
PLOT DATE = 2/18/2026	DATE -	REVISED -

SUMMARY OF QUANTITIES

COUNTY:	WHITE COUNTY
ROUTE:	FAI 64
FUNDING:	100% STATE
LOCATION:	RURAL
	RURAL
	BRIDGE NO. 1 SN 097-0045 0047
	BRIDGE NO. 2 SN 097-0050 0047

CODE NUMBER	ITEM DESCRIPTION	UNIT	TOTAL QUANTITY	BRIDGE NO. 1 SN 097-0045 0047	BRIDGE NO. 2 SN 097-0050 0047
67000400	ENGINEER'S FIELD OFFICE, TYPE A	CAL MO	6	3	3
67100100	MOBILIZATION	L SUM	1	0.5	0.5
70100207	TRAFFIC CONTROL AND PROTECTION, STANDARD 701402	EACH	4	2	2
70107025	CHANGEABLE MESSAGE SIGN	CAL DA	56	28	28
70400100	TEMPORARY CONCRETE BARRIER	FOOT	900	450	450
70400125	PINNING TEMPORARY CONCRETE BARRIER	EACH	240	120	120
70400200	RELOCATE TEMPORARY CONCRETE BARRIER	FOOT	900	450	450
70600251	IMPACT ATTENUATORS, TEMPORARY (NON- REDIRECTIVE, NARROW), TEST LEVEL 3	EACH	4	2	2
70600352	IMPACT ATTENUATORS, RELOCATE (NON- REDIRECTIVE, NARROW), TEST LEVEL 3	EACH	4	2	2
Z0007101	CONTAINMENT AND DISPOSAL OF LEAD PAINT CLEANING RESIDUES NO. 1	L SUM	1	1	0
Z0007102	CONTAINMENT AND DISPOSAL OF LEAD PAINT CLEANING RESIDUES NO. 2	L SUM	1	0	1
Z0010501	CLEANING AND PAINTING STEEL BRIDGE NO. 1	L SUM	1	1	0
Z0010502	CLEANING AND PAINTING STEEL BRIDGE NO. 2	L SUM	1	0	1

MODEL: I4-SQC Sheets [Sheet]
FILE NAME: c:\pw_work\pwr\1185416\1185416D978C15-SHC-SQC.dgn

REV - MS

USER NAME = nathaniel.morris	DESIGNED -	REVISED -	STATE OF ILLINOIS DEPARTMENT OF TRANSPORTATION	SUMMARY OF QUANTITIES	F.A.I RTE. 64	SECTION D9 Bridge Paint 2026-2	COUNTY White	TOTAL SHEETS 15	SHEET NO. 4
PLOT DATE = 2/5/2026	DATE -	REVISED -		SCALE:	SHEET 1 OF 1 SHEETS		STA.	TO STA.	
					ILLINOIS FED. AID PROJECT				

AREAS OF PAINTING

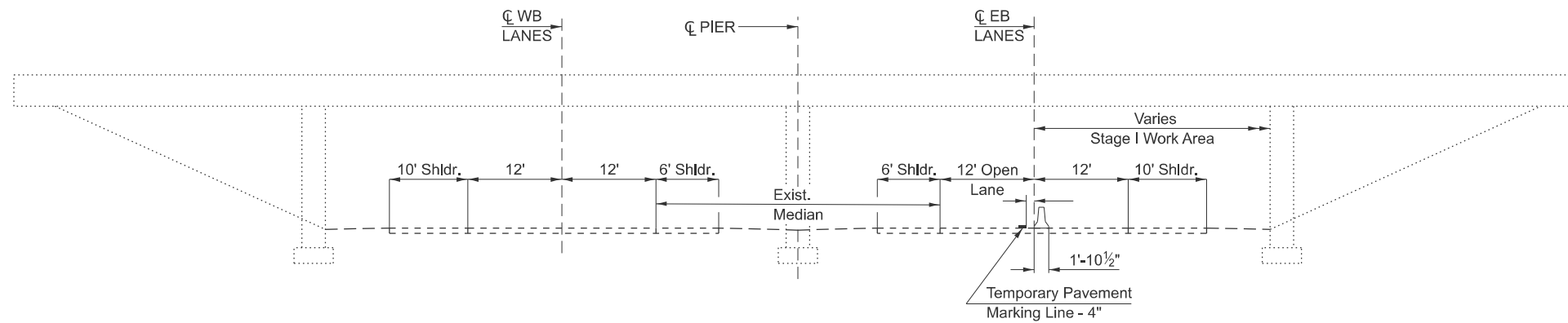
BRIDGE NUMBER	STRUCTURE NUMBER	LEAD PRESENT	ALL STRUCTURAL STEEL
1	097-0045	YES	X
2	097-0050	YES	X

TEMPORARY CONCRETE BARRIER/RELOCATE TEMPORARY CONCRETE BARRIER

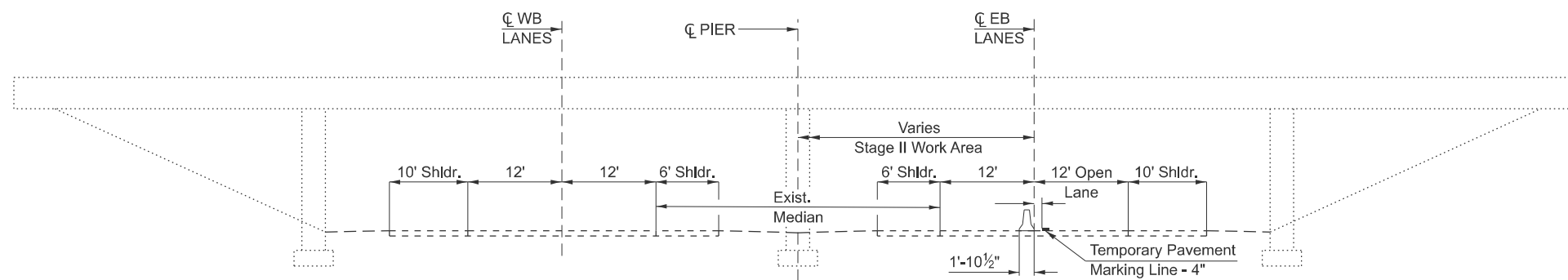
BRIDGE NUMBER	STRUCTURE NUMBER	TEMPORARY CONCRETE BARRIER (FT)	RELOCATE TEMPORARY CONCRETE BARRIER (FT)
1	097-0045	450	450
2	097-0050	450	450
TOTAL		900	900

MODEL: 05-Schedules (Sheet)
FILE NAME: c:\p\work\pww\dnathaniel.morris@illinois.gov\1185416\0978C15-SHD-Schedules.dgn

USER NAME = nathaniel.morris	DESIGNED -	REVISED -	STATE OF ILLINOIS DEPARTMENT OF TRANSPORTATION	SCHEDULES			F.A.I RTE.	SECTION	COUNTY	TOTAL SHEETS	SHEET NO.			
	DRAWN -	REVISED -		SCALE:	SHEET 1	OF 1	SHEETS	STA.	TO STA.	64	D9 Bridge Paint 2026-2	White	15	5
	CHECKED -	REVISED -		ILLINOIS	CONTRACT NO. 78C15									
PLOT DATE = 2/4/2026	DATE -	REVISED -		ILLINOIS FED. AID PROJECT										



TYPICAL BRIDGE
 STAGE I CONSTRUCTION
 SHOWING EB LANES
 WB LANES SIMILAR BY 180° ROTATION
 (SN 097-0045/50 LOOKING EAST)



TYPICAL BRIDGE
 STAGE II CONSTRUCTION
 SHOWING EB LANES
 WB LANES SIMILAR BY 180° ROTATION
 (SN 097-0045/50 LOOKING EAST)

MODEL: 06-Stage Construction Details (Sheet)
 FILE NAME: c:\p\work\pav\06\06\1185416\0978C15-SHE-Typicals.dgn

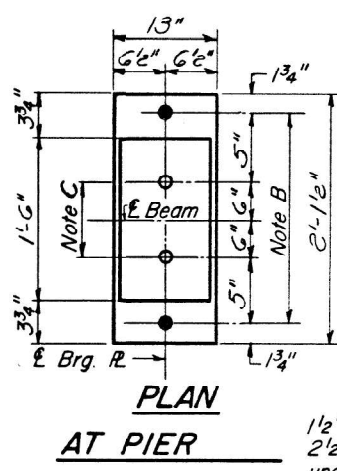
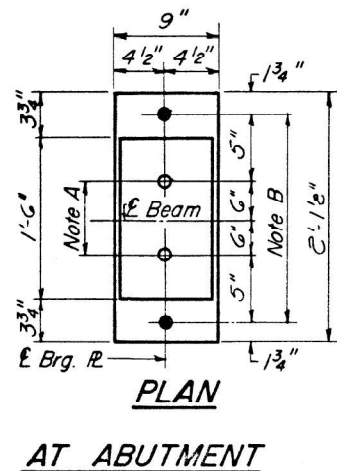
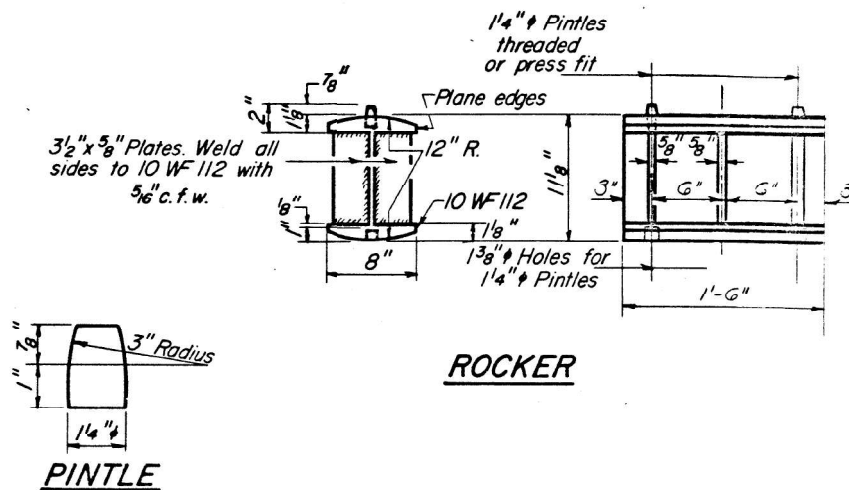
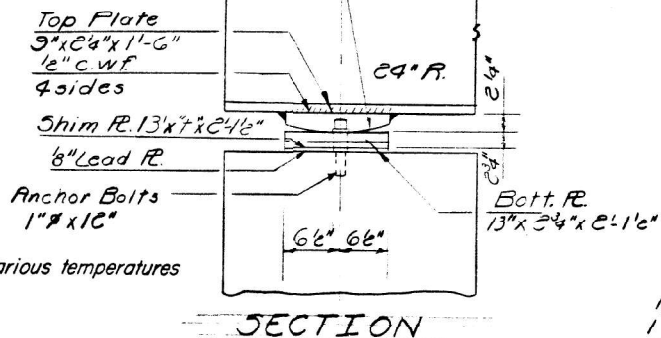
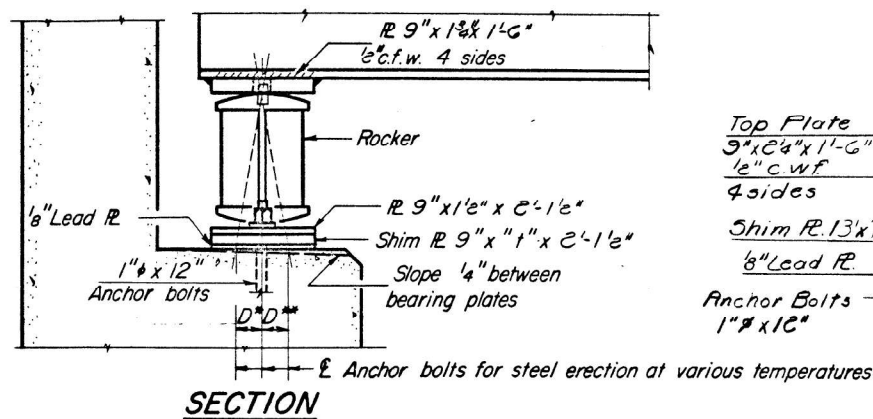
USER NAME = nathaniel.morris	DESIGNED -	REVISED -
	DRAWN -	REVISED -
	CHECKED -	REVISED -
PLOT DATE = 2/18/2026	DATE -	REVISED -

STATE OF ILLINOIS
 DEPARTMENT OF TRANSPORTATION

STAGE CONSTRUCTION DETAILS

SCALE: SHEET 1 OF 1 SHEETS STA. TO STA.

F.A.I RTE.	SECTION	COUNTY	TOTAL SHEETS	SHEET NO.
64	D9 Bridge Paint 2026-2	White	15	6
CONTRACT NO. 78C15				
ILLINOIS FED. AID PROJECT				



NOTES ON SETTING OF ANCHOR BOLTS AT EXP. BRGS.

- a) D^* (Side of brg. away from fixed brg.)
 $D^* = \frac{1}{8}$ " per each 100' of expansion for every 15° fall below the normal temp. of 50°F.
 D^{**} (Side of brg. toward fixed brg.)
 $D^{**} = \frac{1}{8}$ " per each 100' of expansion for every 15° rise above the normal temp. of 50°F.
- b) After beams have been erected and dimensions D^* or D^{**} determined, holes shall be drilled and anchor bolts shall be grouted in place. All fixed anchor bolts may be built into the masonry.

BEARING ASSEMBLY DETAILS

TOP OF WEB ELEVATIONS

	Bm. 1	Bm. 2	Bm. 3	Bm. 4
E. Brg. S. Abut	423.62	423.75	423.78	423.70
Splice 1	424.08	424.13	424.20	424.10
E. Brg. Pier	423.98	424.08	424.08	423.97
Splice C	424.04	424.13	424.15	423.91
E. Brg. N. Abut	423.56	423.63	423.60	423.47

"T" DIMENSIONS

Beam Location	1	2	3	4
E. Brg. S. Abt	0	0	3/8"	0
E. Brg. N. Abt	0	3/8"	0	0
E. Brg. Pier	0	0	0	3/8"

MOMENT TABLE - Symmetrical Composite 2 Span (Composite in Positive Moment Areas Only)

	0.4 Sp. 1	Pier
I_s (in ⁴)	1334.5	50030
I_c (in ⁴)	4913.7	
S_s (in ³)	356	1908
S_c (in ³)	1286	
R (in)	3.33	1.333
M_e (K)	672	1701.7
F_{s9} (ksi)	8.9	10.7
S_e (in ³)	334	
M_{s9} (K)	323	525
M_e (K)	735	655
M_{imp} (K)	160	140
TOTAL (K)	1218	1320
i_{s+e} (ksi)	11.4	8.4
F_{sTOTAL} (ksi)	19.8	19.1
V_R (K)	40	

REACTION TABLE - INTERIOR GIRDER REACTION TABLE

	Abut.	Pier
R_e (K)	37	138
R_{e+e} (K)	51	112
Imp (K)	16	13
R_{TOTAL} (K)	95.6	263

I_s and S_s are the moment of inertia and section modulus of the steel section.
 I_c and S_c are the moment of inertia and section modulus of the composite section used in computing F_s .
 V_R is the maximum 4" impact shear range.

SN 097-0045
FOR INFORMATION ONLY

Work this sheet with sheet #8:3

BEARINGS
F.A.I. RTG 552-11HB-C
WHITE COUNTY
SIA 5025115

DESIGNED	R. A. Mathews
CHECKED	J. G. Coffin
DRAWN	R. G. Barnett
CHECKED	J. W. B.

EXAMINED	Richard H. Goltzman	1970
PASSED	Richard H. Goltzman	
APPROVED	Richard H. Goltzman	

I-2-B 9-1-65

USER NAME = nathaniel.morris	DESIGNED -	REVISED -
	DRAWN -	REVISED -
	CHECKED -	REVISED -
PLOT DATE = 2/6/2026	DATE -	REVISED -

STATE OF ILLINOIS
DEPARTMENT OF TRANSPORTATION

SN 097-0045
STRUCTURE INFORMATION

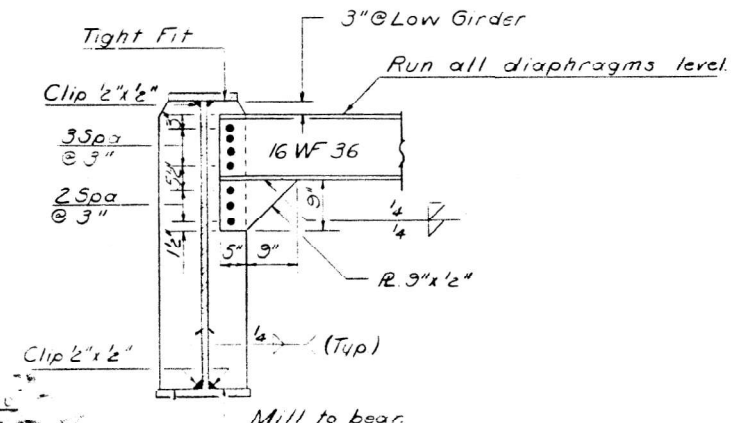
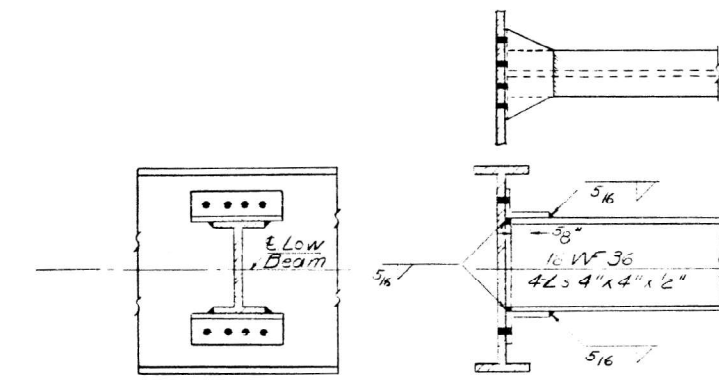
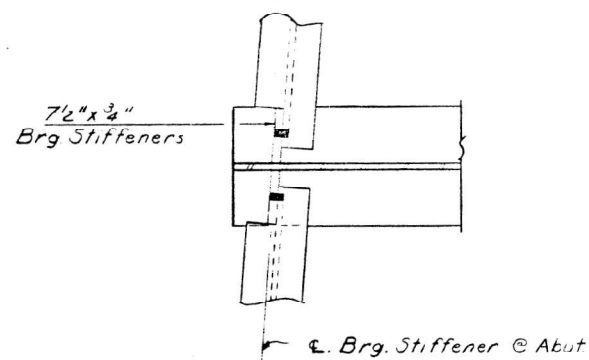
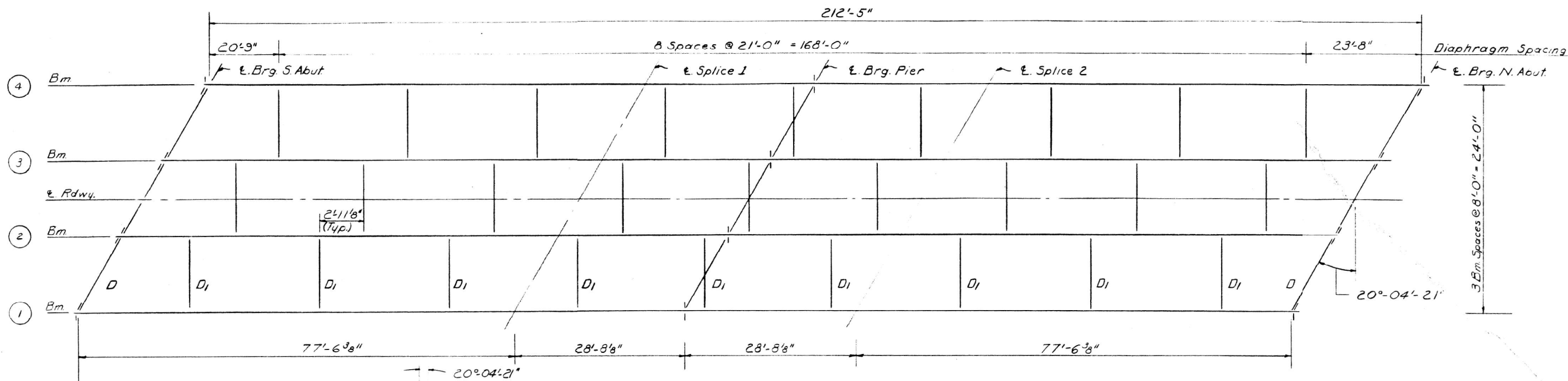
SCALE: SHEET 3 OF 5 SHEETS STA. TO STA.

F.A.I. RTE.	SECTION	COUNTY	TOTAL SHEETS	SHEET NO.
64	D9 Bridge Paint 2026-2	White	15	9
CONTRACT NO. 78C15				
ILLINOIS FED. AID PROJECT				

STATE OF ILLINOIS
DEPARTMENT OF PUBLIC WORKS & BUILDINGS
DIVISION OF HIGHWAYS

ROUTE NO.	SECTION	COUNTY	TOTAL SHEETS	SHEET NO.
77-64	07 MB 2	WHITE	27	16
FED. ROAD DIST. NO. 7		ILLINOIS	FED. AID PROJECT	

SHEET NO. 8
12 SHEETS



SN 097-0045
FOR INFORMATION ONLY

Work this sheet with sheet # 9

DESIGNED	<i>R. Matthews</i>
CHECKED	<i>[Signature]</i>
DRAWN	<i>[Signature]</i>
CHECKED	<i>[Signature]</i>

EXAMINED	<i>[Signature]</i>
PASSED	<i>[Signature]</i>
APPROVED	<i>[Signature]</i>

STRUCTURAL STEEL
F.A.I. RT 64 SEC 37-1111-2
WHITE COUNTY
STA. 5265-14.52

MODEL: I:\Structure Information (Sheet)
FILE NAME: c:\p\work\white\thaniel.morris@illinois.gov\1185416\878C15-SHF-Structures_Info.dgn

USER NAME = nathaniel.morris	DESIGNED -	REVISED -
	DRAWN -	REVISED -
	CHECKED -	REVISED -
PLOT DATE = 2/6/2026	DATE -	REVISED -

STATE OF ILLINOIS
DEPARTMENT OF TRANSPORTATION

SN 097-0045 STRUCTURE INFORMATION	
SCALE:	SHEET 4 OF 5 SHEETS STA. TO STA.

F.A.I. RTE.	SECTION	COUNTY	TOTAL SHEETS	SHEET NO.
64	D9 Bridge Point 2026-2	White	15	10
CONTRACT NO. 78C15				
ILLINOIS FED. AID PROJECT				

BM: 15+51.11, Sta. 24+50 Railroad Spike in power
 2c1c - Elev. 435.66

STATE OF ILLINOIS
 DIVISION OF HIGHWAYS

ROUTE NO.	SECTION	COUNTY	TOTAL SHEETS	SHEET NO.	SHEET NO. 1 12 SHEETS
F.A.I. 64	*	White	25	8	
FED. ROAD DIST. NO. 7	ILLINOIS	FED. AID PROJECT			

GENERAL NOTES * 97-2HB-3

All reinforcement bars shall be lapped 34 diameters unless otherwise shown.

Fasteners shall be high strength bolts. Bolts 7/8" d, open holes 1 1/8" d, unless otherwise noted.

The basic Lead Silico Chromate paint system shall be used for shop and field painting of structural steel.

Field welding of construction accessories will not be permitted to the bottom flange of beams or girders nor to the top flange for a distance equal to one-fourth the span length each way from the pier supports. Field welding in other areas will be permitted only when approved by the Engineer.

Anchor bolts shall be set before bolting cross frames over supports.

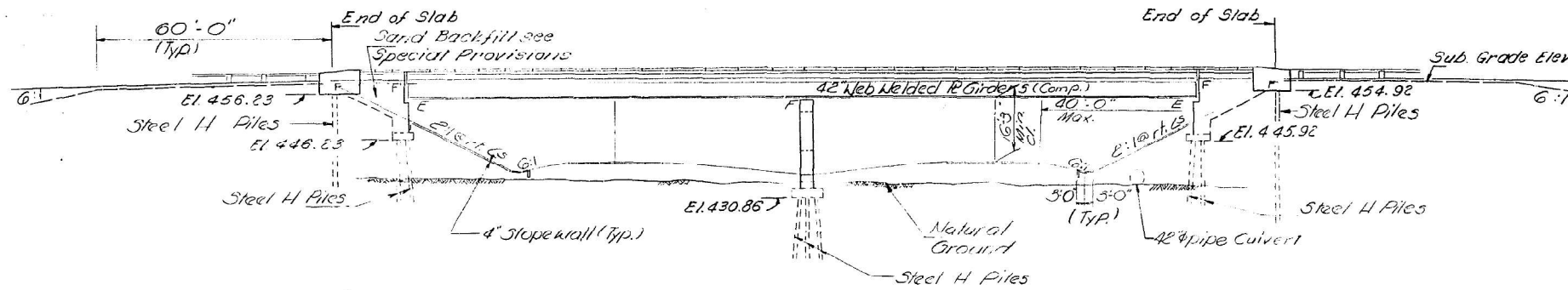
Slope wall shall be reinforced with welded wire fabric 6"x6" mesh weighing 58 lb per 100 sq. ft.

The Contractor shall drive 2 steel test piles (10BP42) in a permanent location, at the Pier and North Abut. as directed by the Engineer before ordering the remainder of piles.

The embankment configuration shown shall be the minimum embankment that must be constructed prior to construction of the abutments.

The concrete rail section above the mandatory construction joint at the top of the slab shall be constructed of Class X Concrete except the aggregates shall conform to the requirements of Handrail Concrete.

Calculated plan weight of the structural steel - 186,700 lbs.



CURVE DATA
 F.A.I. RT. 64

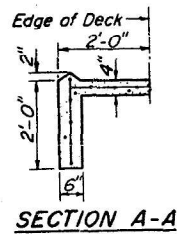
PI. Sta. 5722+81.45
 $\Delta = 4^{\circ} 20' 32''$
 $D = 0^{\circ} 20'$
 $R = 17188.74'$
 $T = 601.16$
 $L = 1201.95$
 $E = 10.50$
 PC. Sta. 5716+80.29
 PT. Sta. 5728+82.24

ELEVATION

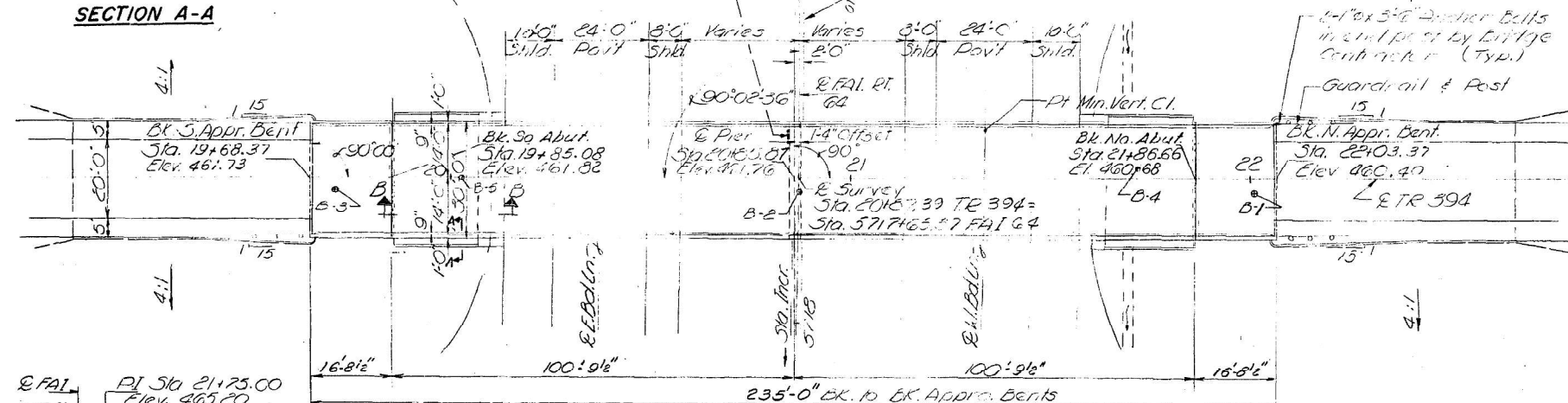
STATION 5717+63.33
 BUILT 19 BY
 STATE OF ILLINOIS
 F.A.I. RT. 64 SEC. 97-2HB-3
 F.A. PROJ. I-64-4 (50)
 LOADING HS1544

NAME PLATE
 (See Std. 2113-1)

SN 097-0050
 FOR INFORMATION ONLY



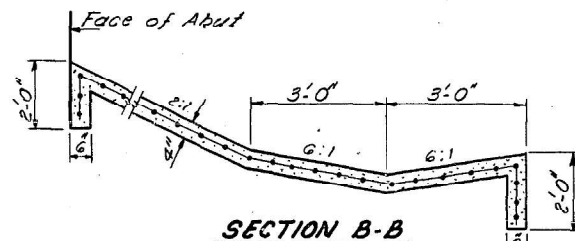
PROFILE F.A.I. RT. 64



PROFILE T.R. 394

DESIGNED	U. Erdigwater Charles (P. 12/22)
CHECKED	Charles (P. 12/22)
DRAWN	J. K.
CHECKED	Patrick S. (2)

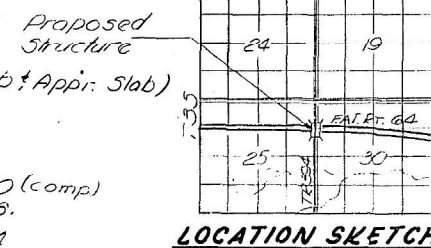
EXAMINED	JANUARY 15 1970
PASSED	Richard H. Holterman CHIEF HIGHWAY ENGINEER



DESIGN STRESSES

$f_c = 1200 \text{ psi}$ (Deck Slab)
 $f_c = 1400 \text{ psi}$ (Curb, Parapet, Sub & Appr. Slab)
 $f_s = 20000 \text{ psi}$ (Reinf.)
 $f_s = 20000 \text{ psi}$ (Struct.)
 $v_e = 75 \text{ psi}$ (Ftgs.)
 $n = 10$

Allowable & Deflection 4/1200 (comp)
 Allow 25#/sq.ft. for future W.S.
 LOADING HS 15-44



TOTAL BILL OF MATERIAL

Item	Unit	Super	Sub	Total
Structure Excavation	Cu. Yds.		28	28
Protective Coat	Sq. Yds.	872		872
Class X Concrete	Cu. Yds.	228.5	157.0	385.5
Stud Shear Connectors	Ea.	1,440		1,440
Aluminum Railing	Lin. Ft.	460		460
Reinforcement Bars	Lbs	52,280	20,340	72,620
Steel Piles (10BP42)	Lin. Ft.		1,250	1,250
Test Piles Steel (10BP42)	Ea.		2	2
Name Plates	Ea.		1	1
Slope Wall (4')	Sq. Yds.		229	229
Sand Backfill	Cu. Yds.		120	120
Preformed Joint Sealer	Lin. Ft.	60		60
Structural Steel	L.S.	0.36		0.36

GENERAL PLAN & ELEVATION
 PROJ. I-64-4 (50) 122
 T.R. 394 OVER F.A.I. RT. 64
 F.A.I. RT. 64 SEC. 97-2HB-3
 WHITE COUNTY
 STA. 5717+63.37

MODEL: 12-Structure Information (Sheet)
 FILE NAME: c:\p\work\wv\hathaniel.morris@illinois.gov\d1185416\0978C15-SHF-Structures_Info.dgn

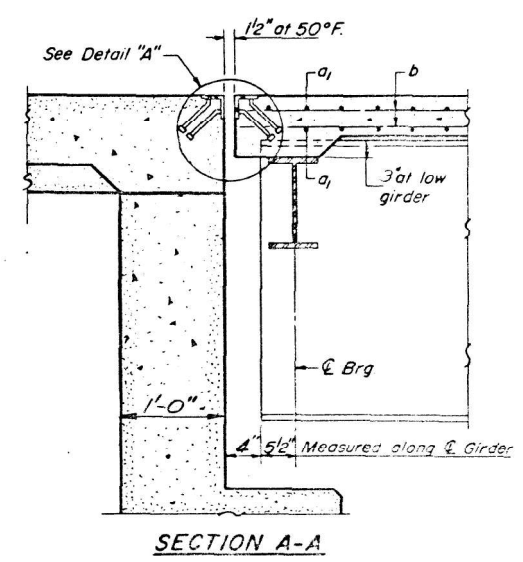
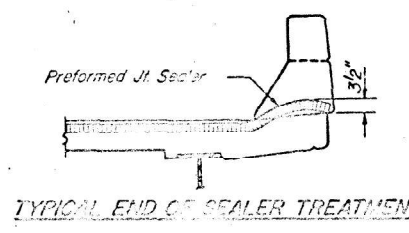
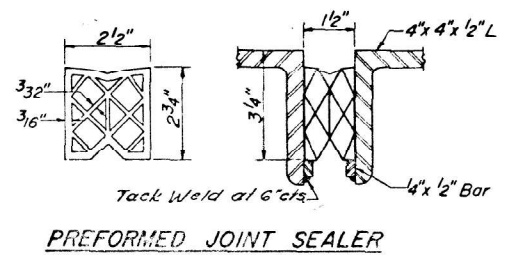
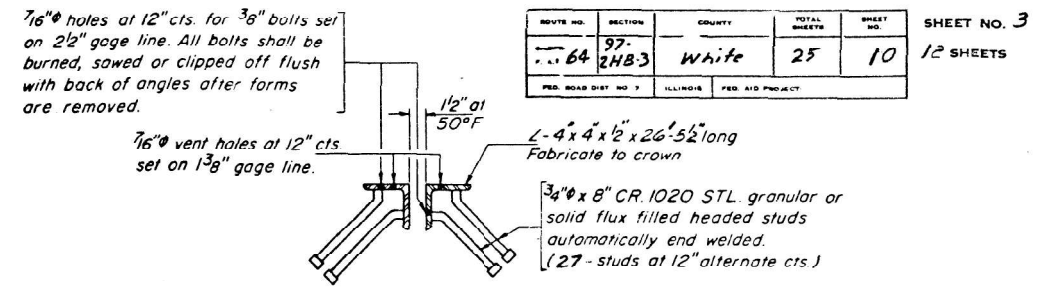
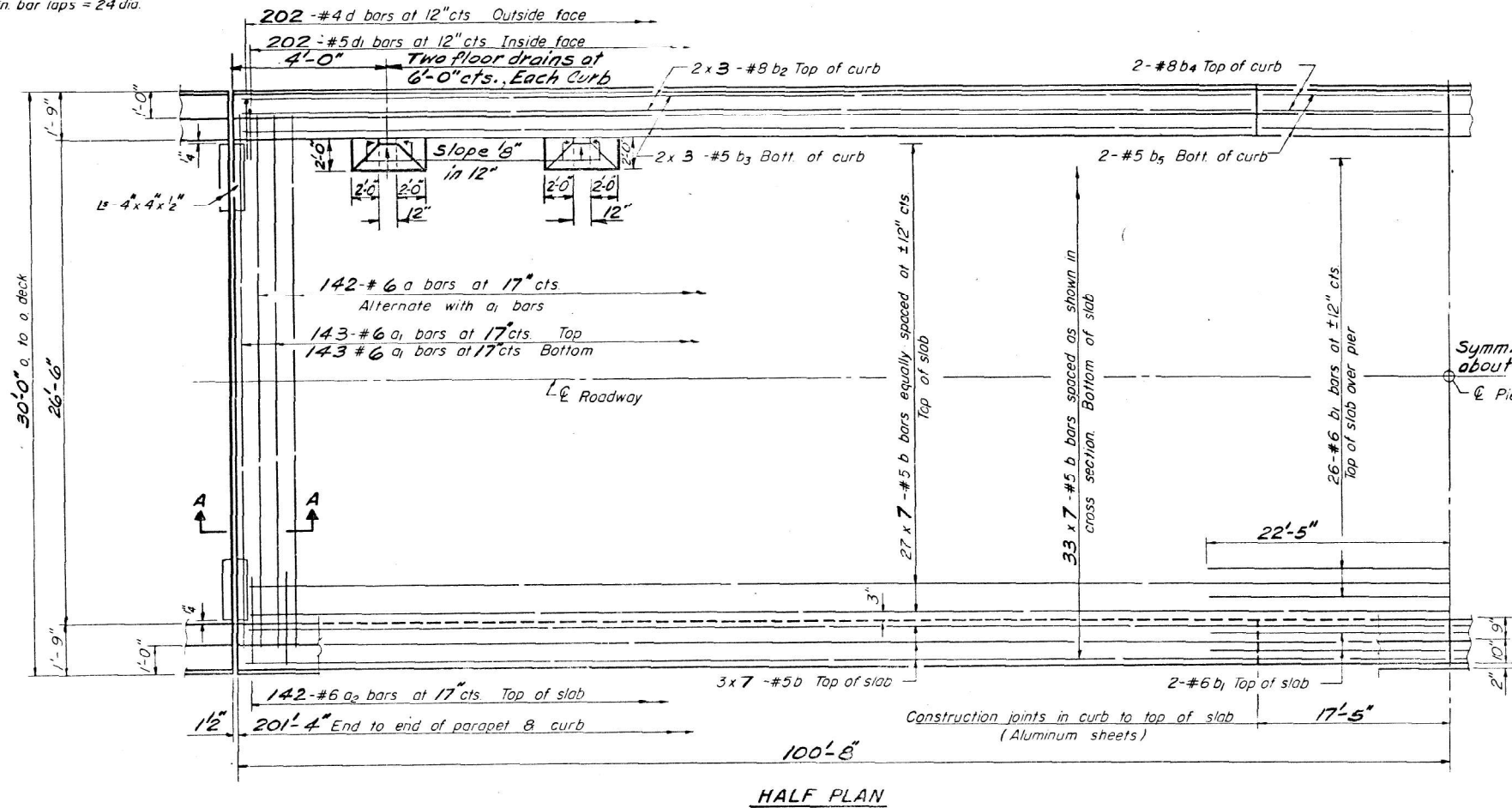
USER NAME = nathaniel.morris	DESIGNED -	REVISED -	STATE OF ILLINOIS DEPARTMENT OF TRANSPORTATION	SN 097-0050 STRUCTURE INFORMATION	F.A.I. RTE. 64	SECTION D9 Bridge Paint 2026-2	COUNTY White	TOTAL SHEETS 15	SHEET NO. 12
PLOT DATE = 2/6/2026	DRAWN -	REVISED -	SCALE:	SHEET 1 OF 4 SHEETS	CONTRACT NO. 78C15	ILLINOIS FED. AID PROJECT			

NOTE:
 Bars indicated thus 20 x 3-#5 etc.
 indicates 20 lines of bars with 3
 lengths per line.
 Min. bar laps = 24 dia.

STATE OF ILLINOIS
 DIVISION OF HIGHWAYS

ROUTE NO.	SECTION	COUNTY	TOTAL SHEETS	SHEET NO.
64	97-2HB-3	White	25	10
FED. ROAD DIST. NO. 1		ILLINOIS	FED. AID PROJECT	

SHEET NO. 3
12 SHEETS



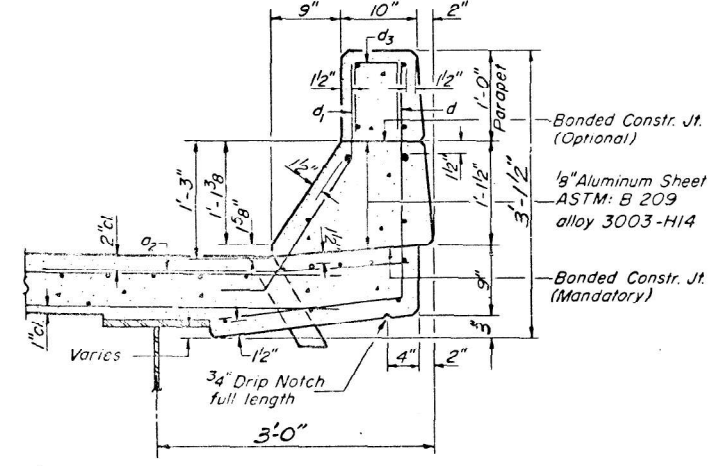
BILL OF MATERIAL

Bar	No	Size	Length	Shape
a	142	#6	28'-0"	—
a1	284	#6	28'-0"	—
a2	284	#6	4'-0"	—
b	462	#5	23'-10"	—
b1	30	#6	45'-0"	—
b2	24	#8	29'-0"	—
b3	24	#5	28'-0"	—
b4	8	#8	17'-2"	—
b5	8	#5	17'-2"	—
d	402	#4	4'-7"	J
d1	402	#5	3'-3"	J

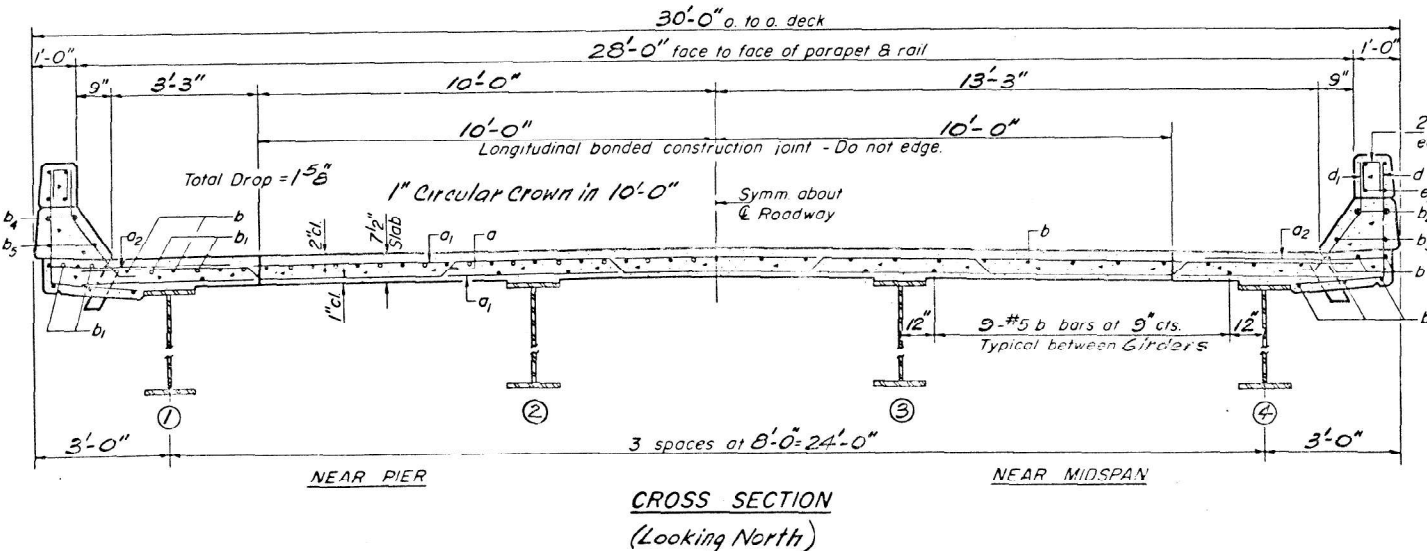
Reinforcement Bars Lbs 41,990
 Class X Concrete Cu Yds 171.7
 * Structural Steel Lbs 186,760
 Stud Shear Connectors Each 1,400

* Weight of bearing assemblies with lead plates and anchor bolts are included as Structural Steel. Est. Wt = 3,740 lbs.
 Parapet Reinforcement and Class X Concrete are billed on sheet #5

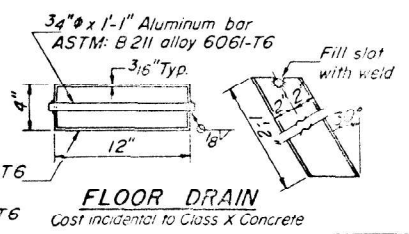
SN 097-0050
 FOR INFORMATION ONLY



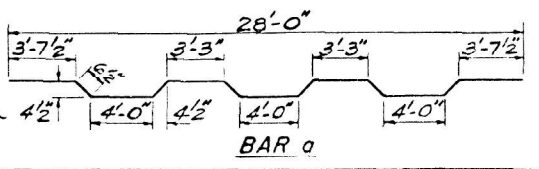
CURB SECTION
 Cost of Aluminum Sheets shall be incidental to Class X Concrete



NOTE: For placement of bars d3 and e thru e2 see sheet #5



FLOOR DRAIN
 Cost incidental to Class X Concrete



DESIGNED	EXAMINED
CHECKED	PASSED
DRAWN	APPROVED
CHECKED	

JAN 15 1970
 Richard H. Gatterson
 CHIEF HIGHWAY ENGINEER

MODEL: 13-Structure Information (Sheet)
 FILE NAME: c:\p\work\win\mathaniel.morris@illinois.gov\1185416\B978C15-SNH-Structures_Info.dgn

5-4-0 4-22-68

USER NAME = nathaniel.morris	DESIGNED -	REVISED -
	DRAWN -	REVISED -
	CHECKED -	REVISED -
PLOT DATE = 2/6/2026	DATE -	REVISED -

STATE OF ILLINOIS
 DEPARTMENT OF TRANSPORTATION

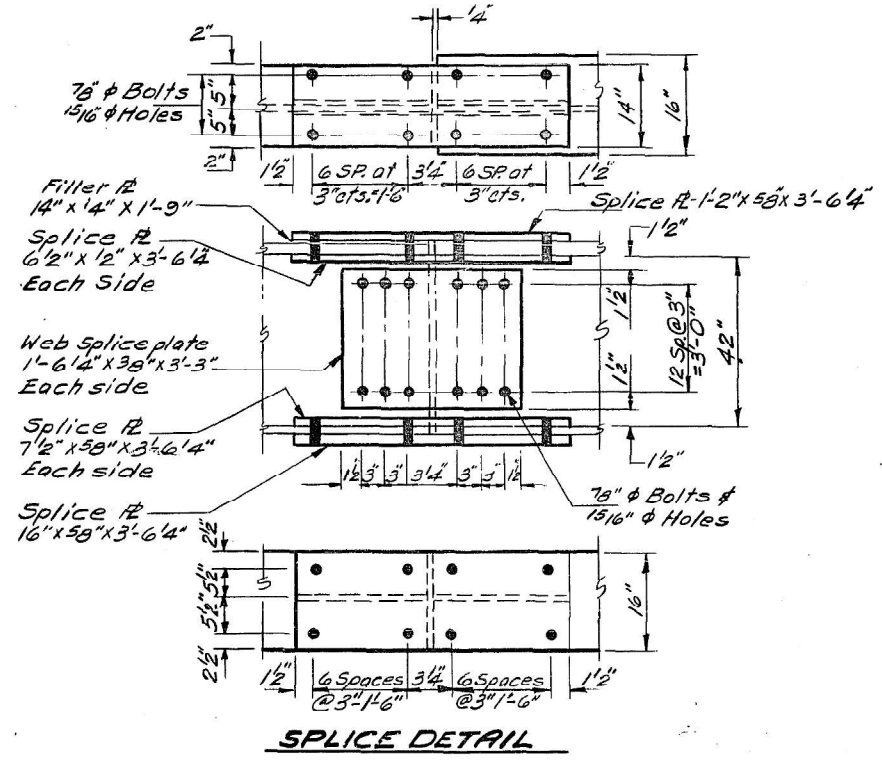
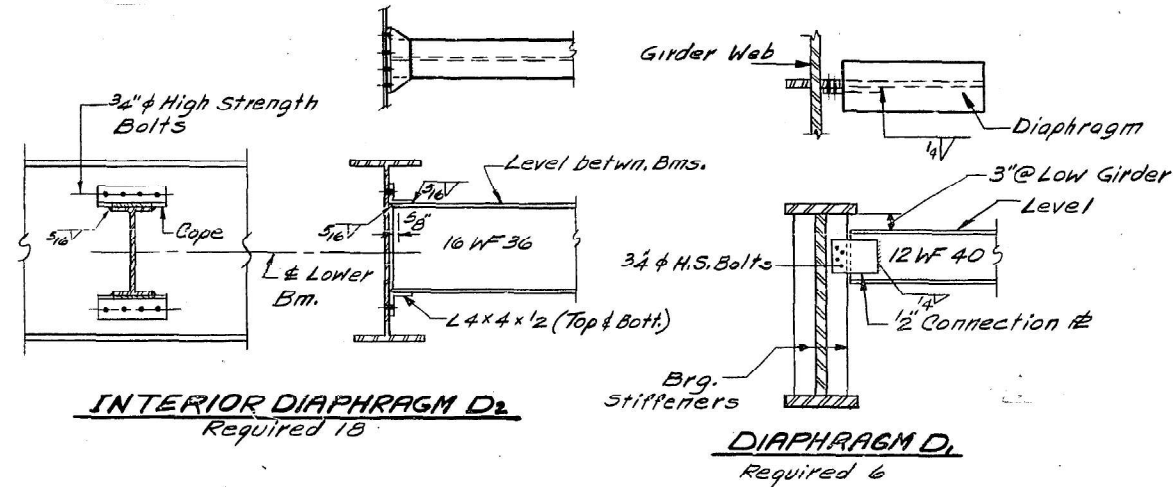
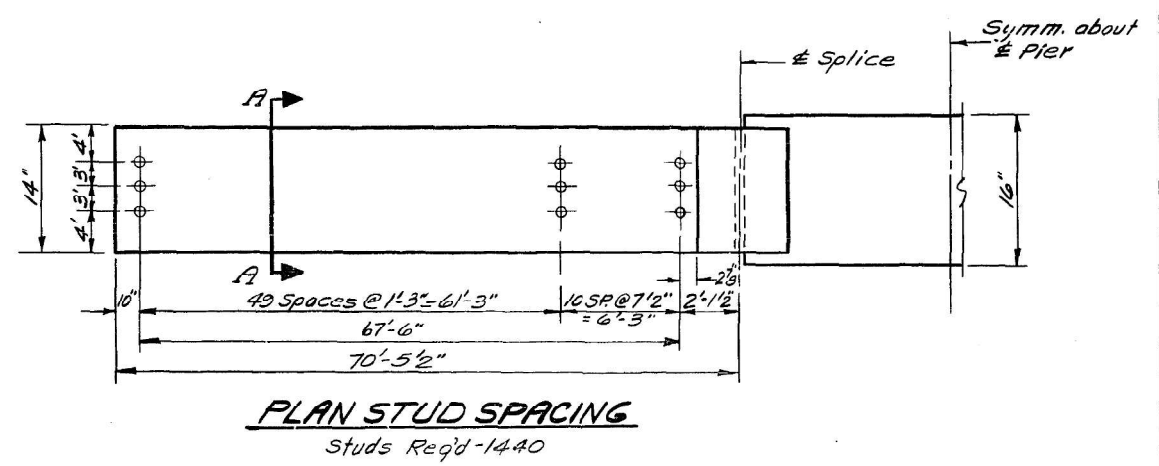
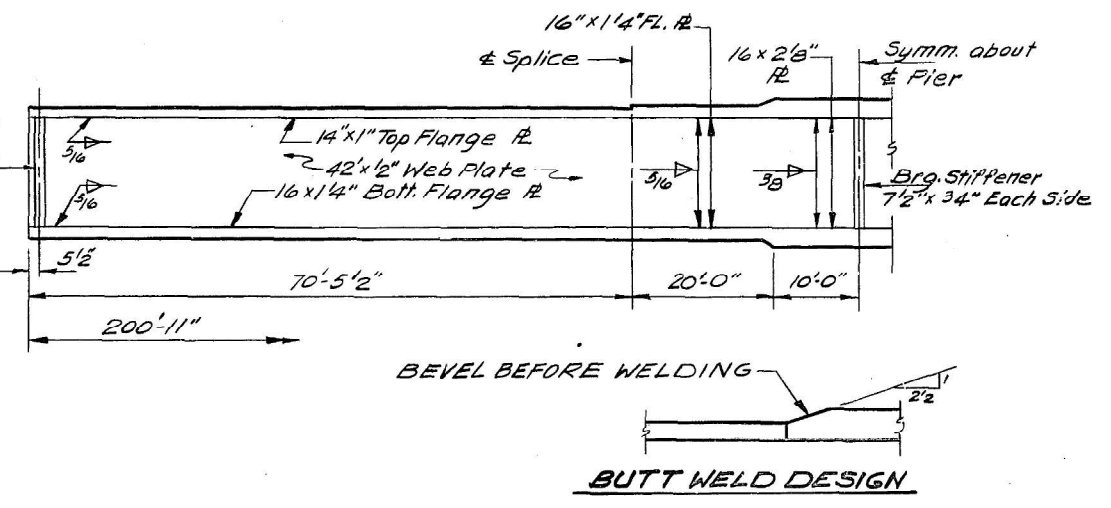
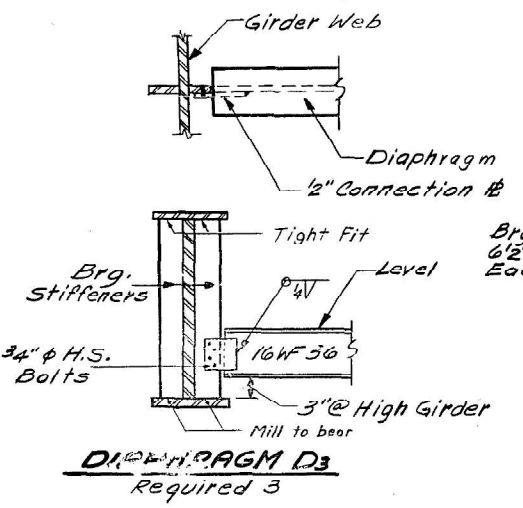
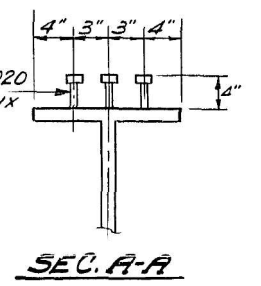
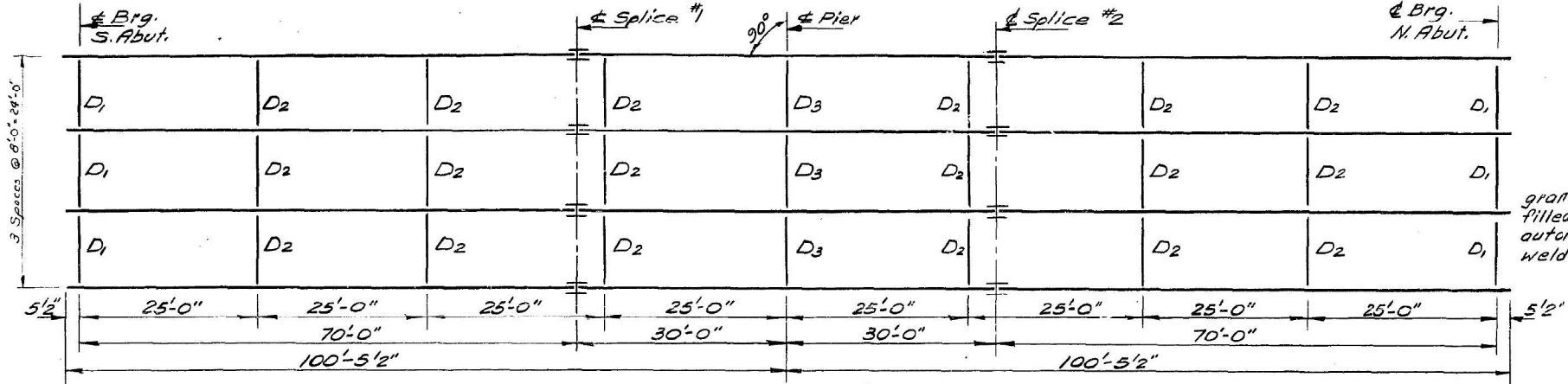
SN 097-0050
 STRUCTURE INFORMATION

SCALE: SHEET 2 OF 4 SHEETS STA. TO STA.

F.A.I. RTE.	SECTION	COUNTY	TOTAL SHEETS	SHEET NO.
64	D9 Bridge Paint 2026-2	White	15	13
CONTRACT NO. 78C15			ILLINOIS FED. AID PROJECT	

SLAB DETAILS-MAIN SPAN
 F.A.I. RT 64 SEC. 97-2HB-3
 WHITE COUNTY
 STATION 5717+63.37

STATE OF ILLINOIS
DIVISION OF HIGHWAYS



SN 097-0050
FOR INFORMATION ONLY

**STRUCTURAL STEEL
LAYOUT & DETAILS**
F.A.I. RT. 64 SEC. 97-2HB-3
WHITE COUNTY
STATION 5+77+63.31

DESIGNED	D. Bridgewater Charles O'Brien	EXAMINED	JAN. 15 1970 R. W. Baumann
CHECKED	Charles O'Brien	PASSED	R. W. Baumann
DRAWN	Leona Heeren	APPROVED	Richard H. Holletman
CHECKED	Frank A. S. Co.		

MODEL: 14-Structure Information (Sheet)
FILE NAME: c:\p\work\white\hathaniel.morris@illinois.gov\1185416\0978C15-SHF-Structures_Info.dgn

USER NAME	= nathaniel.morris	DESIGNED	-	REVISED	-
		DRAWN	-	REVISED	-
		CHECKED	-	REVISED	-
PLOT DATE	= 2/6/2026	DATE	-	REVISED	-

STATE OF ILLINOIS
DEPARTMENT OF TRANSPORTATION

SN 097-0050 STRUCTURE INFORMATION	
SCALE:	SHEET 3 OF 4 SHEETS STA. TO STA.

F.A.I. RTE.	SECTION	COUNTY	TOTAL SHEETS	SHEET NO.
64	D9 Bridge Paint 2026-2	White	15	14
CONTRACT NO. 78C15				
ILLINOIS FED. AID PROJECT				

