

STATE OF ILLINOIS  
DEPARTMENT OF TRANSPORTATION

F.A. RTE	SECTION	COUNTY	TOTAL SHEETS	SHEET NO.
VAR	D9 Electrical Repair FY27-1	VARIOUS	7	1
		ILLINOIS	CONTRACT NO. 78C20	

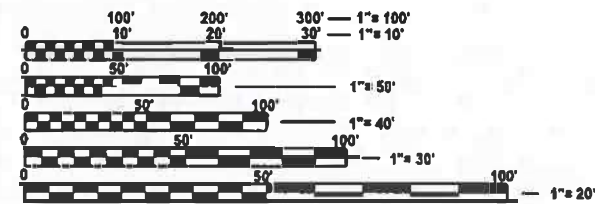
FOR INDEX OF SHEETS, SEE SHEET NO. 3  
FOR SUMMARY OF QUANTITIES, SEE SHEETS 4 - 7

# PROPOSED HIGHWAY PLANS

Various ROUTES  
SECTION D9 ELECTRICAL REPAIR FY 27-1

ELECTRICAL REPAIR  
VARIOUS COUNTIES

C-99-072-26

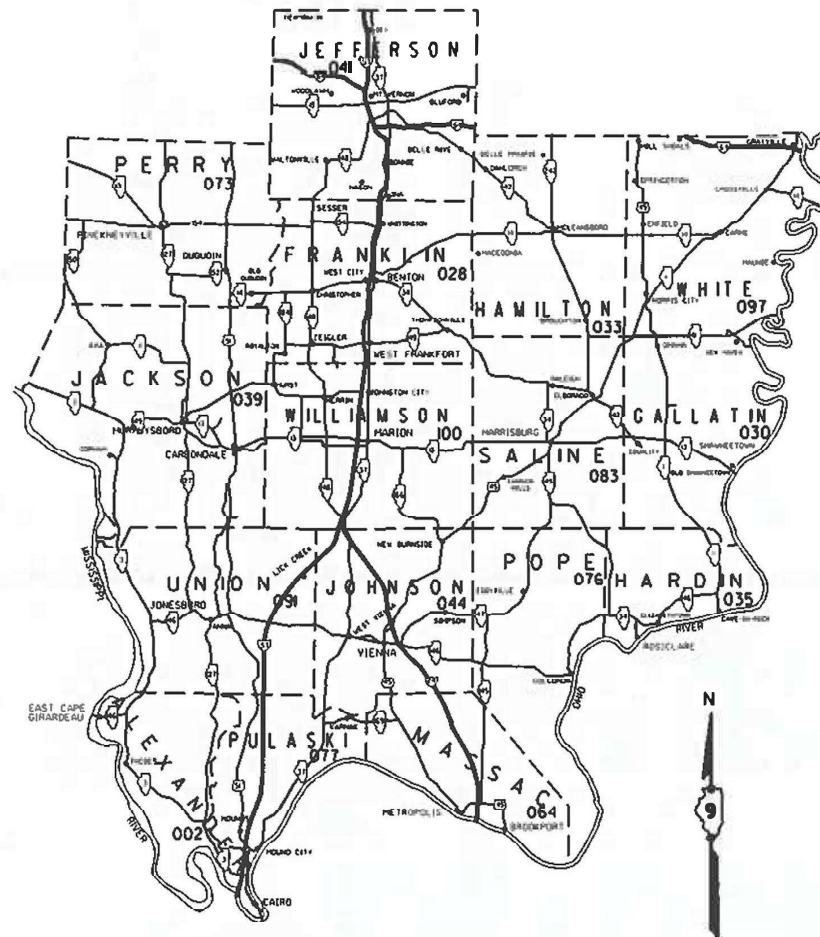


FULL SIZE PLANS HAVE BEEN PREPARED USING STANDARD ENGINEERING SCALES. REDUCED SIZED PLANS WILL NOT CONFORM TO STANDARD SCALES. IN MAKING MEASUREMENTS ON REDUCED PLANS, THE ABOVE SCALES MAY BE USED.

J.U.L.I.E.  
JOINT UTILITY LOCATION INFORMATION FOR EXCAVATION  
1-800-892-0123  
OR 811

PROJECT ENGINEER DYLAN WHITE  
PROJECT MANAGER SEAN GREENLEE

CONTRACT NO. 78C20



STATE OF ILLINOIS  
DEPARTMENT OF TRANSPORTATION

SUBMITTED Feb 27 2026  
Lora S. Ransom  
REGIONAL ENGINEER

May 8 2026  
[Signature]  
ENGINEER OF DESIGN AND ENVIRONMENT

May 8 2026  
[Signature]  
DIRECTOR OF HIGHWAYS PROJECT IMPLEMENTATION

PRINTED BY THE AUTHORITY  
OF THE STATE OF ILLINOIS

MODEL: 02-Signature [Sheet]  
FILE NAME: \\s:\work\signatures\illinois\0988592\0978200-ShIA-Cover\_Sig.dgn

Prepared By: Susan Poe  
DISTRICT STUDIES & PLANS ENGINEER

Examined By: Nancy Lee  
DISTRICT LAND ACQUISITION ENGINEER

Examined By: Carly M  
DISTRICT PROGRAM DEVELOPMENT ENGINEER

Examined By: [Signature]  
DISTRICT OPERATIONS ENGINEER

Examined By: \_\_\_\_\_  
DISTRICT PROJECT IMPLEMENTATION ENGINEER

Examined By: [Signature]  
DISTRICT CONSTRUCTION ENGINEER

Examined By: Aan Hayes  
DISTRICT MATERIALS ENGINEER

USER NAME = dylan.white	DESIGNED -	REVISED -
	DRAWN -	REVISED -
PLOT SCALE = 0.1866633 / in.	CHECKED -	REVISED -
PLOT DATE = 2/24/2026	DATE -	REVISED -

STATE OF ILLINOIS  
DEPARTMENT OF TRANSPORTATION

SIGNATURE  
SHEET

SCALE: SHEET 2 OF 2 SHEETS STA. TO STA.

F.A. RTE.	SECTION	COUNTY	TOTAL SHEETS	SHEET NO.
VAR	D9 Electrical Repair FY27-1	VARIOUS	7	2
CONTRACT NO. 78C20				
ILLINOIS   FED. AID PROJECT				



# SUMMARY OF QUANTITIES

COUNTY:	VARIOUS	VARIOUS
ROUTE:	VARIOUS	VARIOUS
FUNDING:	100% STATE	100% STATE
LOCATION:	RURAL	RURAL
	HIT AND RUN 0021	MCHD 0021

CODE NUMBER	ITEM DESCRIPTION	UNIT	TOTAL QUANTITY	HIT AND RUN 0021	MCHD 0021
80300100	LOCATING UNDERGROUND CABLE	FOOT	100	40	60
81028350	UNDERGROUND CONDUIT, PVC, 2" DIA.	FOOT	200	80	120
82110007	LUMINAIRE, LED, ROADWAY, OUTPUT DESIGNATION G	EACH	4	2	2
82110008	LUMINAIRE, LED, ROADWAY, OUTPUT DESIGNATION H	EACH	4	2	2
82500335	LIGHTING CONTROLLER, PEDESTAL MOUNTED, 240VOLT, 100AMP	EACH	4	2	2
83600200	LIGHT POLE FOUNDATION, 24" DIAMETER	FOOT	4	2	2
83600356	LIGHT POLE FOUNDATION, METAL, 15" BOLT CIRCLE, 8 5/8" X 6'	EACH	4	2	2
84200804	REMOVAL OF POLE FOUNDATION	EACH	4	2	2
88030050	SIGNAL HEAD, LED, 1-FACE, 3-SECTION, BRACKET MOUNTED	EACH	4	2	2
88030100	SIGNAL HEAD, LED, 1-FACE, 5-SECTION, BRACKET MOUNTED	EACH	4	2	2
88102825	PEDESTRIAN SIGNAL HEAD, POLYCARBONATE, LED, 1-FACE, BRACKET MOUNTED WITH COUNT DOWN TIMER	EACH	4	2	2
88200100	TRAFFIC SIGNAL BACKPLATE	EACH	10	4	6
88500100	INDUCTIVE LOOP DETECTOR	EACH	2	1	1

MODEL: SUMMARY OF QUANTITIES (Sheet)  
FILE NAME: c:\pwworking\dw\hitead\098592\098592\098592-SHTC-SCO.dgn

USER NAME = dylan.white	DESIGNED -	REVISED -	
	DRAWN -	REVISED -	
PLOT SCALE = 0.16666633' / in.	CHECKED -	REVISED -	
PLOT DATE = 2/25/2026	DATE -	REVISED -	

**STATE OF ILLINOIS  
DEPARTMENT OF TRANSPORTATION**

**SUMMARY OF  
QUANTITIES**

SCALE: SHEET 1 OF 4 SHEETS STA. TO STA.

F.A. RTE.	SECTION	COUNTY	TOTAL SHEETS	SHEET NO.
VAR	D9 Electrical Repair FY27-1	VARIOUS	7	4
CONTRACT NO. 78C20				
ILLINOIS FED. AID PROJECT				

## SUMMARY OF QUANTITIES - CONT

CODE NUMBER	ITEM DESCRIPTION	UNIT	TOTAL QUANTITY	COUNTY:	VARIOUS	VARIOUS
				ROUTE:	VARIOUS	VARIOUS
			FUNDING:	100% STATE	100% STATE	
			LOCATION:	RURAL	RURAL	
				HIT AND RUN	MCHD	
				0021	0021	
88600100	DETECTOR LOOP, TYPE I	FOOT	60		25	35
89502385	REMOVE EXISTING CONCRETE FOUNDATION	EACH	2		1	1
XP000001	JOURNEYMAN ELECTRICIAN	HOUR	450		175	275
XP000002	APPRENTICE ELECTRICIAN	HOUR	250		75	175
XP000009	PICK-UP TRUCK	HOUR	400		125	275
XP000010	BUCKET TRUCK (LENGTH LESS THAN 35 FEET)	HOUR	20		8	12
XP000011	BUCKET TRUCK (LENGTH 35 TO 65 FEET)	HOUR	25		10	15
XP000012	ARROWBOARD (TRAILER MOUNTED)	HOUR	15		5	10
XP000013	ATTENUATOR, CRASH (TRUCK MOUNTED)	HOUR	15		5	10
XP000014	TRUCK CRANE	HOUR	15		5	10
XP000028	LABOR	HOUR	75		25	50
XP000030	BUCKET TRUCK FOR HIGHWAY LIGHTING	HOUR	60		20	40
XP000031	POLE TRAILER	HOUR	5		2	3

MODEL: SUMMARY OF QUANTITIES-1 (Sheet)  
FILE NAME: c:\pw\work\pwwork\hrl\delad\0868592\087820-ShtC-SoQ.dgn

## SUMMARY OF QUANTITIES - CONT

CODE NUMBER	ITEM DESCRIPTION	UNIT	TOTAL QUANTITY	COUNTY:	VARIOUS	VARIOUS
				ROUTE:	VARIOUS	VARIOUS
				FUNDING:	100% STATE	100% STATE
				LOCATION:	RURAL	RURAL
					HIT AND RUN	MCHD
					0021	0021
XP000032	FLATBED TRAILER	HOUR	5		2	3
XP000106	BUCHANAN FUSEHOLDER KIT	EACH	2		1	1
XP000126	#12 XLPE 1/C COPPER WIRE	FEET	150		75	75
XP000127	#8 XLP-TYPE USE 1/C COPPER WIRE	FEET	150		75	75
XP000128	#6 XLP-TYPE USE 1/C COPPER WIRE	FEET	150		75	75
XP000129	60A LIGHTING CONTACTOR	EACH	2		1	1
XP000130	100A LIGHTING CONTACTOR	EACH	2		1	1
XP000139	BREAKAWAY COUPLING, 1"	EACH	4		2	2
XP000140	1/4" X 1/4" STAINLESS STEEL MESH	SQ FT	4		2	2
XP000141	ALUMINUM SIGNAL BASE, SQUARE (PELCO)	EACH	2		1	1
XP000170	ELECTRIC CABLE, 2/C, #14, TW, SH	FEET	135		45	90
XP000176	ELECTRIC CABLE, 5/C, #14	FEET	135		45	90
XP000177	ELECTRIC CABLE, 7/C, #14	FEET	135		45	90

MODEL: SUMMARY OF QUANTITIES-2 (Sheet)  
FILE NAME: c:\pwworking\dw\white\ad0986592\097820-ShtC-Sco.dgn

# SUMMARY OF QUANTITIES - CONT

COUNTY:	VARIOUS	VARIOUS
ROUTE:	VARIOUS	VARIOUS
FUNDING:	100% STATE	100% STATE
LOCATION:	RURAL	RURAL
	HIT AND RUN 0021	MCHD 0021

CODE NUMBER	ITEM DESCRIPTION	UNIT	TOTAL QUANTITY	HIT AND RUN 0021	MCHD 0021
XP000180	SPLICE KIT (3 M SCOTCHCAST #72 N1)	EACH	2	1	1
XP000181	LOOP SEALANT (BONDO P606)	GALLON	2	1	1
XP000204	ALUMINUM LIGHT POLE, 45', COMPLETE, ROUND, W 15' TRUSS STYLE ARM, W/TRANSFORMER BASE, 17" B.C.	EACH	4	2	2
XP000205	ALUMINUM LIGHT POLE MAST ARM, 15', TRUSS STYLE	EACH	4	2	2
XP000206	ALUMINUM TRANSFORMER BASE, 13" UPPER BOLT CIRCLE 17" LOWER BOLT CIRCLE	EACH	4	2	2
XP000207	ALUMINUM LIGHT POLE, 45', COMPLETE, RD, W/ TENON TOP, W/I BASE, 17" B.C., DK. BRONZE POWDER COAT	EACH	4	2	2
XP000208	ALUMINUM TRANSFORMER BASE, 15" UPPER BOLT CIRCLE 17" LOWER BOLT CIRCLE, DK. BRONZE POWDER COAT	EACH	4	2	2
XP000309	REPAIR HIGHWAY LIGHT POLE KNOCKDOWN	EACH	4	2	2
XP000310	REPLACE HIGHWAY LIGHT POLE BREAKAWAY DEVICE, COUPLINGS	EACH	4	2	2
XP000311	REPLACE HIGHWAY LIGHT POLE BREAKAWAY DEVICE, TRANSFORMER BASE	EACH	4	2	2
XP000312	REPLACE TRAFFIC SIGNAL POST BASE ASSEMBLY	EACH	4	2	2
X8710306	FIBER OPTIC CABLE SPLICE - MAINLINE	EACH	2	1	1
Ø Z0076604	TRAINEES TRAINING PROGRAM GRADUATE	HOUR	500	500	

Ø 0042

REV - MS

MODEL: SUMMARY OF QUANTITIES-1 (Sheet)  
FILE NAME: c:\pw\work\pwwork\hiteled\0986592\097820-SHTC-SCO.dgn

USER NAME = dylan.white	DESIGNED -	REVISED -
	DRAWN -	REVISED -
PLOT SCALE = 0.16666633' / in.	CHECKED -	REVISED -
PLOT DATE = 2/25/2026	DATE -	REVISED -

**STATE OF ILLINOIS  
DEPARTMENT OF TRANSPORTATION**

**SUMMARY OF  
QUANTITIES**

SCALE: SHEET 4 OF 4 SHEETS STA. TO STA.

F.A. RTE.	SECTION	COUNTY	TOTAL SHEETS	SHEET NO.
VAR	D9 Electrical Repair FY27-1	VARIOUS	7	7
CONTRACT NO. 78C20				
		ILLINOIS	FED. AID PROJECT	