

STATE OF ILLINOIS
DEPARTMENT OF TRANSPORTATION

F.A.P. RTE.	SECTION	COUNTY	TOTAL SHEETS	SHEET NO.
861	111RS-4	Perry	19	1
		ILLINOIS	CONTRACT NO. 78C25	

FOR INDEX OF SHEETS, SEE SHEET NO. 3

**TOWNSHIP
CUTLER**

**TRAFFIC DATA
2025 ADT - 675 W/ 19.3% TRUCKS**

PROPOSED HIGHWAY PLANS

**FAP ROUTE 861 (IL 150)
SECTION 111RS-4
PROJECT STP-PSOM (762)
RESURFACING 3P
PERRY COUNTY**

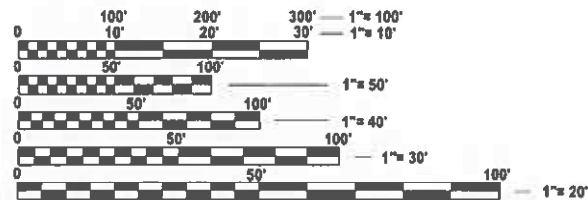
C-99-074-26

**COORDINATE SYSTEM : NAD 1983 State
Plane Illinois West (FIPS 1202)**

POSTED SPEED : 45-55 MPH

**PROJECT ENDS STA 206+44.20
AT IL 154**

**PROJECT BEGINS STA 57+40
(0.2MI N REESES HILL RD)**

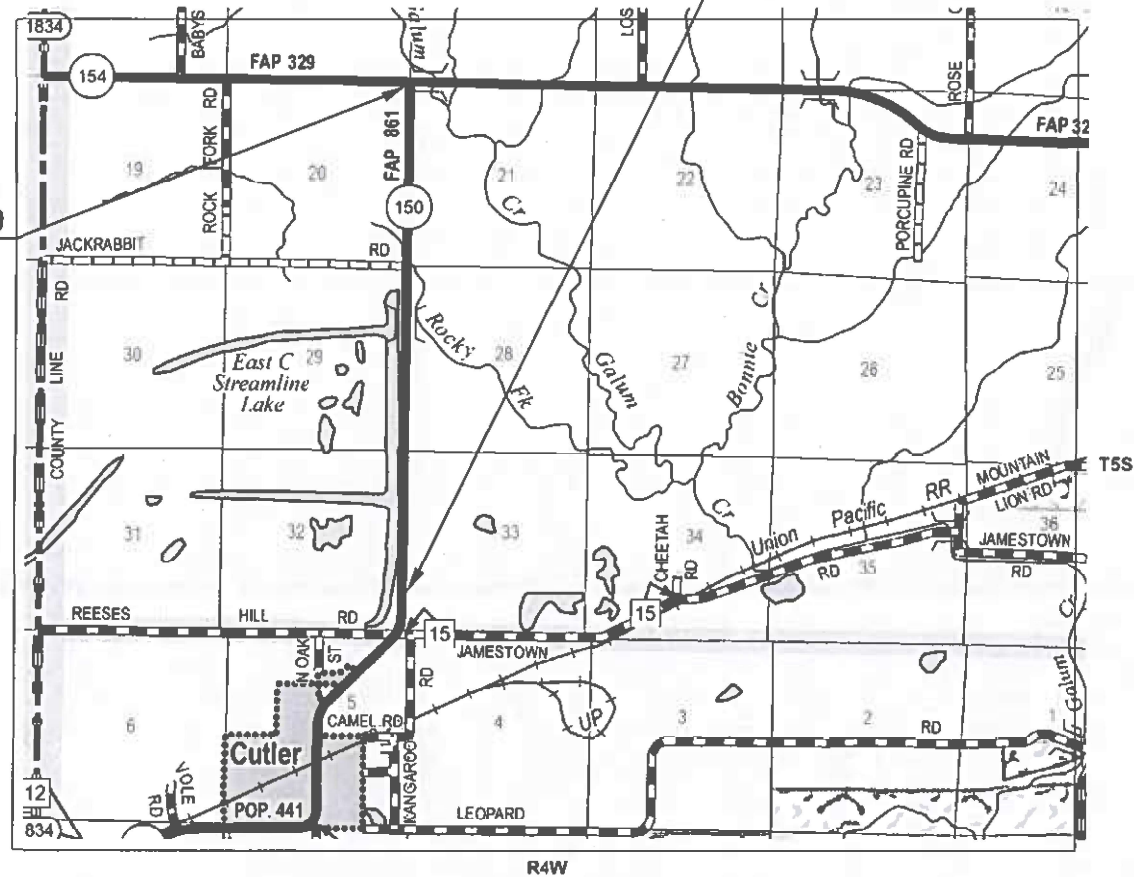


FULL SIZE PLANS HAVE BEEN PREPARED USING STANDARD ENGINEERING SCALES. REDUCED SIZED PLANS WILL NOT CONFORM TO STANDARD SCALES. IN MAKING MEASUREMENTS ON REDUCED PLANS, THE ABOVE SCALES MAY BE USED.

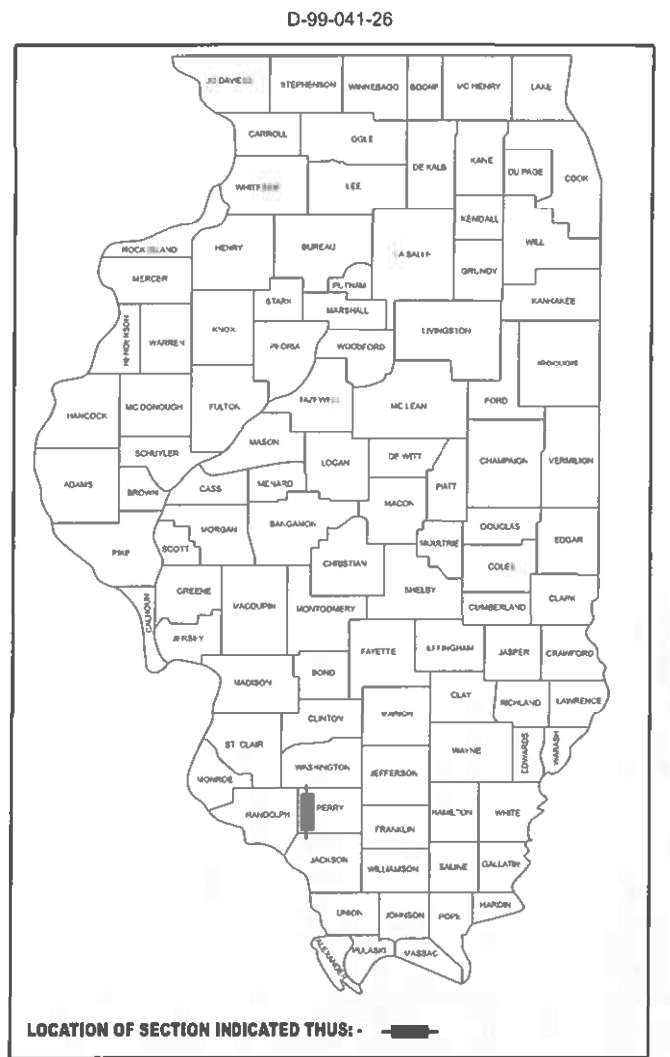
J.U.L.I.E.
JOINT UTILITY LOCATION INFORMATION FOR EXCAVATION
1-800-892-0123
OR 811

**PROJECT ENGINEER NATHAN TAYLOR
PROJECT MANAGER MATTHEW WILSON**

CONTRACT NO. 78C25



GROSS LENGTH = 14,904.2 FT. = 2.82 MILE
NET LENGTH = 14,904.2 FT. = 2.82 MILE



STATE OF ILLINOIS
DEPARTMENT OF TRANSPORTATION

SUBMITTED March 13 20 26
Loa S. Rensoms
REGIONAL ENGINEER

May 8 20 26
[Signature]
ENGINEER OF DESIGN AND ENVIRONMENT

May 8 20 26
[Signature]
DIRECTOR OF HIGHWAYS PROJECT IMPLEMENTATION

**PRINTED BY THE AUTHORITY
OF THE STATE OF ILLINOIS**

MODEL: Signature Sheet (Sheet)
FILE NAME: c:\na_work\pav50\matthew_wilson@illinois.gov\11975211D678C25-Cover-Sig.dgn

Prepared By: Susan Poe
DISTRICT STUDIES & PLANS ENGINEER

Examined By: Nancy Hee
DISTRICT LAND ACQUISITION ENGINEER

Examined By: Carla Nish
DISTRICT PROGRAM DEVELOPMENT ENGINEER

Examined By: [Signature]
DISTRICT OPERATIONS ENGINEER

Examined By: _____
DISTRICT PROJECT IMPLEMENTATION ENGINEER

Examined By: Bessie Smith
DISTRICT CONSTRUCTION ENGINEER

Examined By: Aam Hays
DISTRICT MATERIALS ENGINEER

USER NAME	Matthew.Wilson	DESIGNED	-	REVISED	-
		DRAWN	-	REVISED	-
		CHECKED	-	REVISED	-
PLOT DATE	2/20/2026	DATE	-	REVISED	-

**STATE OF ILLINOIS
DEPARTMENT OF TRANSPORTATION**

SIGNATURE SHEET

SCALE: SHEET 2 OF 19 SHEETS STA. TO STA.

F.A.P RTE.	SECTION	COUNTY	TOTAL SHEETS	SHEET NO.
861	111RS-4	Perry	19	2
CONTRACT NO. 78C25				
ILLINOIS FED AID PROJECT				

HIGHWAY STANDARDS

- 000001-09 STANDARD SYMBOLS, ABBREVIATIONS AND PATTERNS
- 001006 DECIMAL OF AN INCH AND OF A FOOT
- 420001-11 PAVEMENT JOINTS
- 442201-04 CLASS C & D PATCHES
- 642011 SINUSOIDAL RUMBLE STRIPS, 14IN
- 701001-02 OFF-ROAD OPERATIONS, 2L, 2W, MORE THAN 15 FT AWAY
- 701006-05 OFF-RD OPERATIONS, 2L, 2W, 15' (4.5m) TO 24" (600mm) FROM PAVEMENT EDGE
- 701011-04 OFF-ROAD MOVING OPERATIONS, 2L, 2W, DAY ONLY
- 701301-04 LANE CLOSURE, 2L 2W, SHORT TIME OPERATIONS
- 701306-04 LANE CLOSURE, 2L, 2W, SLOW MOVING OPERATIONS DAY ONLY, FOR SPEEDS GREATER THAN OR EQUAL TO 45 MPH
- 701311-03 LANE CLOSURE, 2L, 2W, MOVING OPERATIONS - DAY ONLY
- 701336-07 LANE CLOSURE, 2L, 2W, WORK AREAS IN SERIES, FOR SPEEDS 45MPH OR MORE
- 701901-11 TRAFFIC CONTROL DEVICES
- 780001-05 TYPICAL PAVEMENT MARKINGS
- 781001-04 TYPICAL APPLICATIONS RAISED REFLECTIVE PAVEMENT MARKERS

INDEX OF SHEETS

SHEET NO	DESCRIPTION
1	COVER SHEET
2	SIGNATURE SHEET
3	INDEX OF SHEETS, HIGHWAY STANDARDS, GENERAL NOTES, AND LIST OF COMMITMENTS
4	MIXTURE REQUIREMENTS AND MTD RESTRICTIONS
5-6	SUMMARY OF QUANTITIES
7-9	TYPICAL SECTIONS
10-14	PATCHING SCHEDULE
15	HMA PAVEMENT AND ENTRANCE SCHEDULES
16	PAVEMENT MARKING SCHEDULES
17	HMA TRANSITIONS
18	INLAY DETAILS
19	DISTRICT DETAILS

GENERAL NOTES

FACTORS USED FOR ESTIMATING PLAN QUANTITIES ARE AS FOLLOWS AND SHALL NOT BE USED FOR THE BASIS OF FINAL QUANTITIES:

- ALL HOT MIX ASPHALT 2.016 TONS/CU. YD.
- ALL AGGREGATE 2.05 TONS/CU. YD.

THE ALGEBRAIC DIFFERENCE BETWEEN THE PAVEMENT AND SHOULDER SLOPES SHALL NOT EXCEED 10%. THE SHOULDER ON THE OUTSIDE OF SUPERELEVATED CURVES SHALL BE FLATTENED ACCORDINGLY.

THE QUANTITY OF SHORT TERM PAVEMENT MARKING SHOWN IN THE PLANS IS BASED ON ONE APPLICATION EACH FOR THE HMA SURFACE REMOVAL, BINDER COURSE, AND SURFACE COURSE

HMA RESURFACING SHALL BE PLACED IN A SEQUENCE THAT WILL MINIMIZE THE TIME THE CENTERLINE EDGE IS EXPOSED TO TRAFFIC. WHEN AT THE END OF A DAY'S OPERATION THE EXPOSED CENTERLINE EDGE IS GREATER THAN 2,000 FT, THE CONTRACTOR SHALL BE REQUIRED TO PAVE IN THE ADJACENT LANE ON THE FOLLOWING WORK DAY. PRIOR TO WINTER SHUTDOWN, RESURFACING ON ADJACENT LANES IS TO BE BROUGHT UP TO THE SAME ELEVATION.

LONGITUDINAL JOINT SEALANT SHALL BE PLACED UNDER THE HMA SURFACE COURSE

WHEN SHOULDER RESURFACING OF 6 FEET OR LESS IS ALLOWED TO BE PLACED SIMULTANEOUSLY WITH THE ADJACENT TRAFFIC LANE, THE MAINLINE QUALITY MANAGEMENT PROGRAM WILL BE ENFORCED FOR THE MAINLINE AND SHOULDERS

INCIDENTAL HOT-MIX ASPHALT SURFACING SHALL BE PAVED IN A SEPARATE OPERATION FROM THE MAINLINE PAVEMENT

COMMITMENTS: NONE

MODEL: Index of Sheets (Sheet)
FILE NAME: c:\p\work\pav\std\matthew.wilson@illinois.gov\1197521\078C25-IndexOFSheets.dgn

USER NAME = Matthew.Wilson	DESIGNED -	REVISED -	STATE OF ILLINOIS DEPARTMENT OF TRANSPORTATION	INDEX OF SHEETS, HIGHWAY STANDARDS, GENERAL NOTES, AND LIST OF COMMITMENTS			F.A.P RTE.	SECTION	COUNTY	TOTAL SHEETS	SHEET NO.
	DRAWN -	REVISED -					861	111RS-4	Perry	19	3
	CHECKED -	REVISED -		CONTRACT NO. 78C25							
PLOT DATE = 3/2/2026	DATE -	REVISED -		SCALE:	SHEET 3	OF 19	SHEETS	STA.	TO STA.	ILLINOIS FED. AID PROJECT	

HMA MIXTURE REQUIREMENTS TABLES

The following HMA mixture requirements are applicable for this project

Locations	Hot-Mix Asphalt Surface Course, Incidental Hot-Mix Asphalt
Mixture Use(s):	Hot-Mix Asphalt Surface Course, Mix C, N70
PG:	PG64-22
Design Air Voids:	4.0 %, 70 Gyration Design
Mixture Composition: (Gradation Mixture)	IL-9.5mm
Friction Aggregate:	Mix C
Mixture Weight:	112 lbs/Sq Yd/in
Quality Management Program:	QCP
Sublot Size:	1000 tons
Material Transfer Device (Required?)	Yes

Locations	Hot-Mix Asphalt Binder Course
Mixture Use(s):	Hot-Mix Asphalt Binder Course, IL-9.5FG, N70
PG:	PG64-22
Design Air Voids:	4.0 %, 70 Gyration Design
Mixture Composition: (Gradation Mixture)	IL-9.5 mm Fine Graded
Friction Aggregate:	None
Mixture Weight:	112 lbs/sq yd/in
Quality Management Program:	QCP
Sublot Size:	1000 tons
Material Transfer Device (Required?)	Yes

MTD CROSSING RESTRICTIONS TABLE

SN ROUTE (IL 150)	STATION TO STATION			MTD CROSSING WEIGHT RESTRICTIONS	MTD CROSSING RESTRICTIONS
				TONS	
SN 073-2002	133+73.20	TO	139+45.70	NOT ALLOWED	NOT ALLOWED
SN 073-7041	64+54.00	TO	64+54.00	40	Emptied *
SN 073-7042	73+22.20	TO	73+22.20	40	Emptied *
SN 073-7043	102+00.00	TO	102+00.00	40	Emptied *
SN 073-7044	192+06.00	TO	192+06.00	40	Emptied *

MODEL: Mixture Requirements (Sheet)
FILE NAME: c:\p\work\15101\matthew.wilson@illinois.gov\1197521\078C25-MixtureRequirements.dgn

USER NAME = Matthew.Wilson	DESIGNED -	REVISED -
	DRAWN -	REVISED -
	CHECKED -	REVISED -
PLOT DATE = 2/20/2026	DATE -	REVISED -

**STATE OF ILLINOIS
DEPARTMENT OF TRANSPORTATION**

**MIXTURE REQUIREMENTS AND
MTD RESTRICTIONS**

SCALE: SHEET 4 OF 19 SHEETS STA. TO STA.

F.A.P RTE.	SECTION	COUNTY	TOTAL SHEETS	SHEET NO.
861	111RS-4	Perry	19	4
CONTRACT NO. 78C25				
ILLINOIS FED. AID PROJECT				

SUMMARY OF QUANTITIES

COUNTY:	PERRY CO
ROUTE:	FAP 861
FUNDING:	80% FEDERAL 20% STATE
LOCATION:	RURAL

CODE NUMBER	ITEM DESCRIPTION	UNIT	TOTAL QUANTITY	ROADWAY 0005
40600290	BITUMINOUS MATERIALS (TACK COAT)	POUND	26,648	26,648
40600370	LONGITUDINAL JOINT SEALANT	FOOT	14,905	14,905
40600400	MIXTURE FOR CRACKS, JOINTS, AND FLANGEWAYS	TON	10	10
40600405	MATERIAL TRANSFER DEVICE	TON	6,535	6,535
40600990	TEMPORARY RAMP	SQ YD	56	56
40602970	HOT-MIX ASPHALT BINDER COURSE, IL-9.5FG, N70	TON	3,276	3,276
40604052	HOT-MIX ASPHALT SURFACE COURSE, IL-9.5, MIX "C", N70	TON	3,411	3,411
40800050	INCIDENTAL HOT-MIX ASPHALT SURFACING	TON	8	8
44000156	HOT-MIX ASPHALT SURFACE REMOVAL, 1 3/4"	SQ YD	39,922	39,922
44201411	CLASS C PATCHES, TYPE I, 15 INCH	SQ YD	47	47
44201415	CLASS C PATCHES, TYPE II, 15 INCH	SQ YD	2,777	2,777
44201419	CLASS C PATCHES, TYPE III, 15 INCH	SQ YD	274	274
44201421	CLASS C PATCHES, TYPE IV, 15 INCH	SQ YD	1,204	1,204
48102100	AGGREGATE WEDGE SHOULDER, TYPE B	TON	828	828
64200214	SINUSOIDAL RUMBLE STRIPS, 14"	FOOT	14,905	14,905

MODEL: SQQ [Sheet]
 FILE NAME: c:\p\work\pav\idom\matthew.wilson@illinois.gov\197521\0578C25-SQQ.dgn

REV - MS

USER NAME = Matthew.Wilson DESIGNED - DRAWN - CHECKED - PLOT DATE = 3/12/2026	REVISED - REVISED - REVISED - DATE -	STATE OF ILLINOIS DEPARTMENT OF TRANSPORTATION	SUMMARY OF QUANTITIES	SCALE:	SHEET 5 OF 19 SHEETS STA. TO STA.	<table border="1" style="width: 100%; border-collapse: collapse;"> <tr> <th>F.A.P. RTE.</th> <th>SECTION</th> <th>COUNTY</th> <th>TOTAL SHEETS</th> <th>SHEET NO.</th> </tr> <tr> <td>861</td> <td>111RS-4</td> <td>Perry</td> <td>19</td> <td>5</td> </tr> </table>	F.A.P. RTE.	SECTION	COUNTY	TOTAL SHEETS	SHEET NO.	861	111RS-4	Perry	19	5
F.A.P. RTE.	SECTION	COUNTY	TOTAL SHEETS	SHEET NO.												
861	111RS-4	Perry	19	5												
ILLINOIS FED. AID PROJECT CONTRACT NO. 78C25																

SUMMARY OF QUANTITIES - CONT

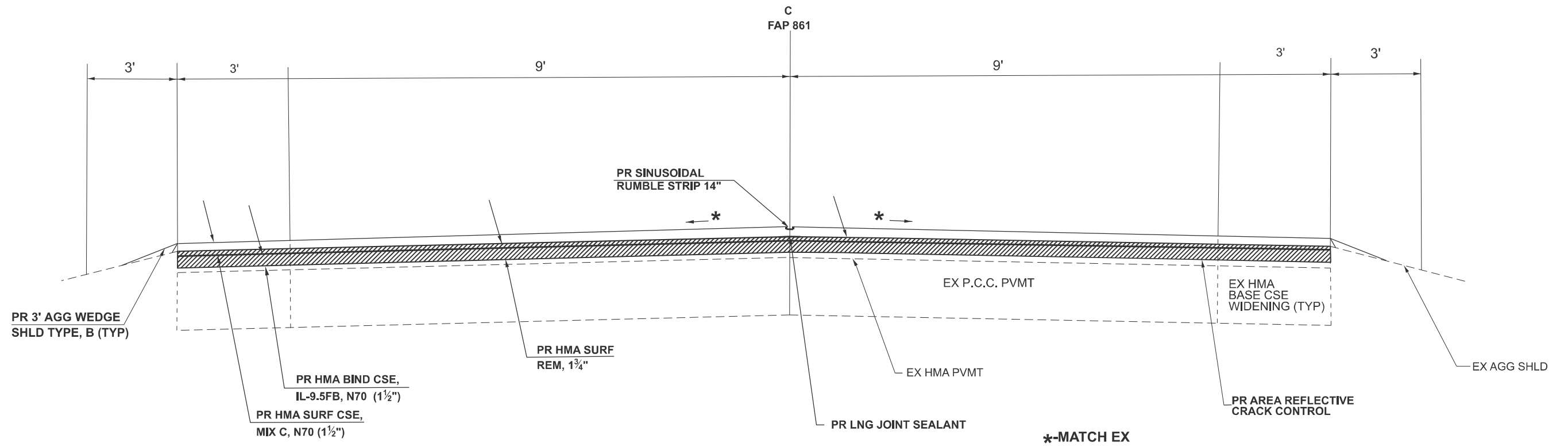
COUNTY:	PERRY CO
ROUTE:	FAP 861
FUNDING:	80% FEDERAL 20% STATE
LOCATION:	RURAL
TOTAL QUANTITY	ROADWAY
	0005

CODE NUMBER	ITEM DESCRIPTION	UNIT	TOTAL QUANTITY	ROADWAY
67000400	ENGINEER'S FIELD OFFICE, TYPE A	CAL MO	1	1
67100100	MOBILIZATION	L SUM	1	1
70100460	TRAFFIC CONTROL AND PROTECTION, STANDARD 701306	L SUM	1	1
70100600	TRAFFIC CONTROL AND PROTECTION, STANDARD 701336	L SUM	1	1
70107025	CHANGEABLE MESSAGE SIGN	CAL DA	56	56
70300100	SHORT TERM PAVEMENT MARKING	FOOT	5028	5028
70300150	SHORT TERM PAVEMENT MARKING REMOVAL	SQ FT	1676	1676
70300221	TEMPORARY PAVEMENT MARKING - LINE 4"- PAINT	FOOT	37027	37027
70300281	TEMPORARY PAVEMENT MARKING - LINE 24"- PAINT	FOOT	33	33
* 78001110	PAINT PAVEMENT MARKING - LINE 4"	FOOT	37027	37027
* 78001180	PAINT PAVEMENT MARKING - LINE 24"	FOOT	33	33
* 78100100	RAISED REFLECTIVE PAVEMENT MARKER	EACH	193	193
78300200	RAISED REFLECTIVE PAVEMENT MARKER REMOVAL	EACH	193	193
78300201	PAVEMENT MARKING REMOVAL - GRINDING	SQ FT	12409	12409
X4430201	AREA REFLECTIVE CRACK CONTROL TREATMENT	SQ YD	39922	39922

* SPECIALTY ITEM

MODEL: SOQ CONT (Sheet)
FILE NAME: c:\p\work\perry\matthew.wilson@illinois.gov\117521UD878C25-SOQ.dgn

USER NAME = Matthew.Wilson	DESIGNED -	REVISED -	STATE OF ILLINOIS DEPARTMENT OF TRANSPORTATION	SUMMARY OF QUANTITIES				F.A.P. RTE.	SECTION	COUNTY	TOTAL SHEETS	SHEET NO.		
	DRAWN -	REVISED -		SCALE:	SHEET 6	OF 19	SHEETS	STA.	TO STA.	861	111RS-4	Perry	19	6
	CHECKED -	REVISED -		CONTRACT NO. 78C25										
PLOT DATE = 2/24/2026	DATE -	REVISED -		ILLINOIS FED. AID PROJECT										



TO BE USED:
57+40.00 TO 133+73.20

MODEL: Typical Section 1 (Sheet)
FILE NAME: c:\p\work\pav\illinois\pav\117521\078C25-Typicals.dgn

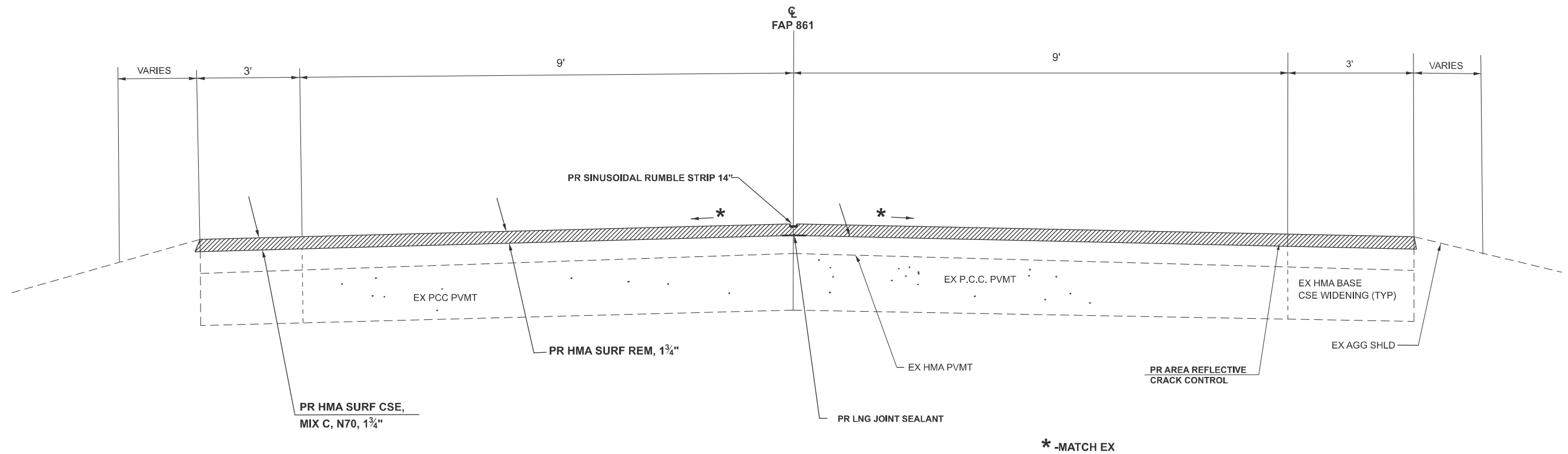
USER NAME = Matthew.Wilson	DESIGNED -	REVISED -
	DRAWN -	REVISED -
	CHECKED -	REVISED -
PLOT DATE = 3/12/2026	DATE -	REVISED -

**STATE OF ILLINOIS
DEPARTMENT OF TRANSPORTATION**

**TYPICAL SECTIONS
IL 150**

SCALE: SHEET 7 OF 19 SHEETS STA. TO STA.

F.A.P. RTE.	SECTION	COUNTY	TOTAL SHEETS	SHEET NO.
861	111RS-4	Perry	19	7
CONTRACT NO. 78C25				
ILLINOIS FED. AID PROJECT				



TO BE USED:
 STA 133+73.20 TO 139+45.70

MODEL: Typical Section 2 (Sheet)
 FILE NAME: c:\p\work\p1\illinois\p1\117521\078C25-Typicals.dgn

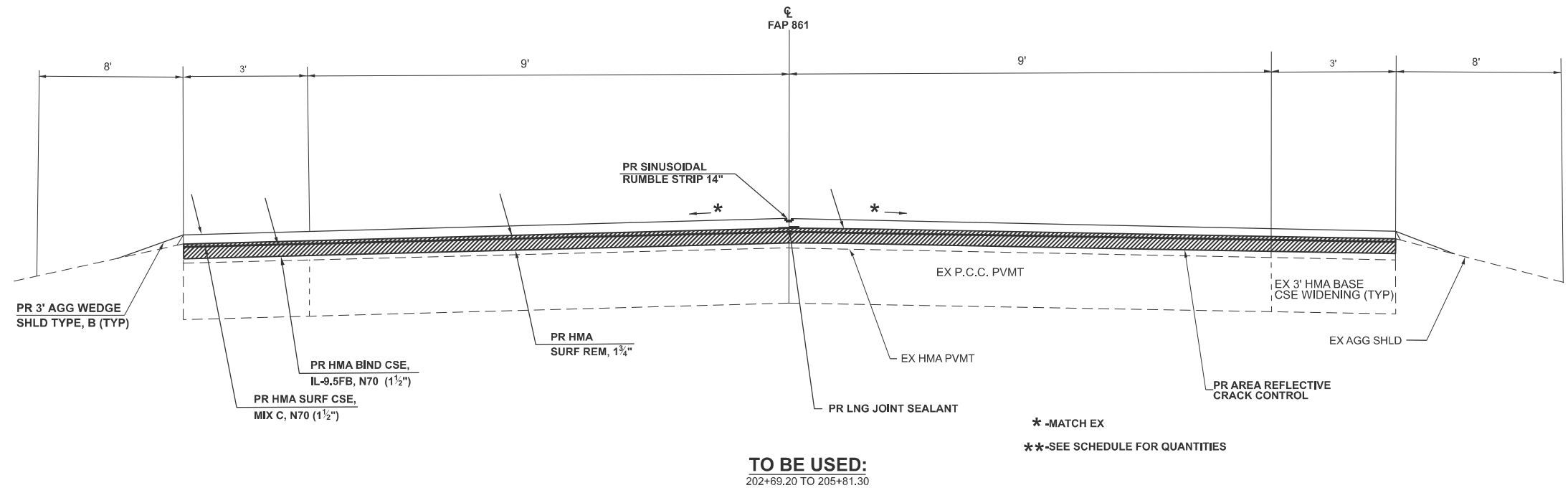
USER NAME = Matthew.Wilson	DESIGNED -	REVISED -
	DRAWN -	REVISED -
	CHECKED -	REVISED -
PLOT DATE = 3/12/2026	DATE -	REVISED -

**STATE OF ILLINOIS
 DEPARTMENT OF TRANSPORTATION**

**TYPICAL SECTIONS
 IL 150**

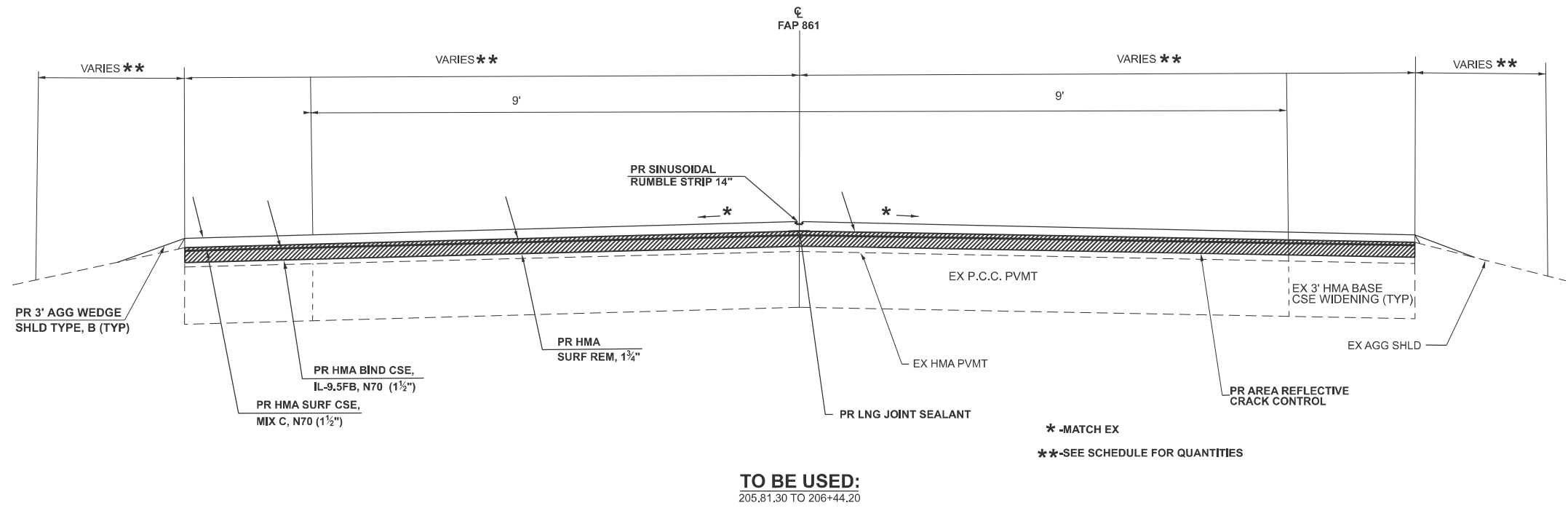
SCALE: SHEET 8 OF 19 SHEETS STA. TO STA.

F.A.P. RTE.	SECTION	COUNTY	TOTAL SHEETS	SHEET NO.
861	111RS-4	Perry	19	8
CONTRACT NO. 78C25				
ILLINOIS FED. AID PROJECT				



TO BE USED:
202+69.20 TO 205+81.30

* -MATCH EX
** -SEE SCHEDULE FOR QUANTITIES



TO BE USED:
205.81.30 TO 206+44.20

* -MATCH EX
** -SEE SCHEDULE FOR QUANTITIES

MODEL: Typical Sections (Sheet)
FILE NAME: c:\p\work\pav\mattthew.wilson@illinois.gov\1197521\0678C25-Typicals.dgn

USER NAME = Matthew.Wilson	DESIGNED -	REVISED -
	DRAWN -	REVISED -
	CHECKED -	REVISED -
PLOT DATE = 3/12/2026	DATE -	REVISED -

**STATE OF ILLINOIS
DEPARTMENT OF TRANSPORTATION**

TYPICAL SECTIONS IL 150			
SCALE:	SHEET 9	OF 19 SHEETS	STA. TO STA.

F.A.P. RTE.	SECTION	COUNTY	TOTAL SHEETS	SHEET NO.
861	111RS-4	Perry	19	9
CONTRACT NO. 78C25				
ILLINOIS FED. AID PROJECT				

PATCHING SCHEDULE

LOCATION NB IL 150			AREA	CLASS C PATCHING, TY I 15 INCH	CLASS C PATCHING, TY II 15 INCH	CLASS C PATCHING, TY III 15 INCH	CLASS C PATCHING, TY IV 15 INCH
PATCH #	WIDTH	LENGTH	SQ YD	SQ YD	SQ YD	SQ YD	SQ YD
1	12	7	9.33	0.00	9.33	0.00	0.00
2	12	6	8.00	0.00	8.00	0.00	0.00
3	12	8	10.67	0.00	10.67	0.00	0.00
4	12	6	8.00	0.00	8.00	0.00	0.00
5	12	6	8.00	0.00	8.00	0.00	0.00
6	12	6	8.00	0.00	8.00	0.00	0.00
7	12	6	8.00	0.00	8.00	0.00	0.00
8	12	6	8.00	0.00	8.00	0.00	0.00
9	12	8	10.67	0.00	10.67	0.00	0.00
10	12	6	8.00	0.00	8.00	0.00	0.00
11	12	6	8.00	0.00	8.00	0.00	0.00
12	12	6	8.00	0.00	8.00	0.00	0.00
13	4	10	4.44	4.44	0.00	0.00	0.00
14	12	6	8.00	0.00	8.00	0.00	0.00
15	12	6	8.00	0.00	8.00	0.00	0.00
16	12	6	8.00	0.00	8.00	0.00	0.00
17	12	6	8.00	0.00	8.00	0.00	0.00
18	12	6	8.00	0.00	8.00	0.00	0.00
19	12	6	8.00	0.00	8.00	0.00	0.00
20	12	6	8.00	0.00	8.00	0.00	0.00
21	12	6	8.00	0.00	8.00	0.00	0.00
22	12	6	8.00	0.00	8.00	0.00	0.00
23	7	40	31.11	0.00	0.00	0.00	31.11
24	12	10	13.33	0.00	13.33	0.00	0.00
25	6	10	6.67	0.00	6.67	0.00	0.00
SUB-TOTALS				5	195	0	32

PATCHING SCHEDULE- CONT'D

LOCATION NB IL 150			AREA	CLASS C PATCHING, TY I 15 INCH	CLASS C PATCHING, TY II 15 INCH	CLASS C PATCHING, TY III 15 INCH	CLASS C PATCHING, TY IV 15 INCH
PATCH #	WIDTH	LENGTH	SQ YD	SQ YD	SQ YD	SQ YD	SQ YD
26	12	6	8.00	0.00	8.00	0.00	0.00
27	12	6	8.00	0.00	8.00	0.00	0.00
28	6	10	6.67	0.00	6.67	0.00	0.00
29	12	10	13.33	0.00	13.33	0.00	0.00
30	12	6	8.00	0.00	8.00	0.00	0.00
31	6	6	4.00	4.00	0.00	0.00	0.00
32	12	6	8.00	0.00	8.00	0.00	0.00
33	12	10	13.33	0.00	13.33	0.00	0.00
34	12	8	10.67	0.00	10.67	0.00	0.00
35	12	8	10.67	0.00	10.67	0.00	0.00
36	12	6	8.00	0.00	8.00	0.00	0.00
37	12	8	10.67	0.00	10.67	0.00	0.00
38	12	6	8.00	0.00	8.00	0.00	0.00
39	12	6	8.00	0.00	8.00	0.00	0.00
40	12	6	8.00	0.00	8.00	0.00	0.00
41	12	6	8.00	0.00	8.00	0.00	0.00
42	12	12	16.00	0.00	0.00	16.00	0.00
43	12	10	13.33	0.00	13.33	0.00	0.00
44	6	10	6.67	0.00	6.67	0.00	0.00
45	12	6	8.00	0.00	8.00	0.00	0.00
46	12	6	8.00	0.00	8.00	0.00	0.00
47	12	6	8.00	0.00	8.00	0.00	0.00
48	12	6	8.00	0.00	8.00	0.00	0.00
49	12	6	8.00	0.00	8.00	0.00	0.00
50	12	6	8.00	0.00	8.00	0.00	0.00
SUB-TOTALS				4	206	16	0

MODEL: Patching Schedule (Sheet)
 FILE NAME: c:\p\work\w101\matthew.wilson@illinois.gov\117521\0578C25-Schedule.sgm

USER NAME = Matthew.Wilson	DESIGNED -	REVISED -
	DRAWN -	REVISED -
	CHECKED -	REVISED -
PLOT DATE = 2/27/2026	DATE -	REVISED -

**STATE OF ILLINOIS
DEPARTMENT OF TRANSPORTATION**

PATCHING SCHEDULE

SCALE: SHEET 10 OF 19 SHEETS STA. TO STA.

F.A.P RTE.	SECTION	COUNTY	TOTAL SHEETS	SHEET NO.
861	111RS-4	Perry	19	10
CONTRACT NO. 78C25				
ILLINOIS FED. AID PROJECT				

PATCHING SCHEDULE- CONT'D

LOCATION NB IL 150		AREA	CLASS C	CLASS C	CLASS C	CLASS C
PATCH #	WIDTH		LENGTH	PATCHING, TY I 15 INCH	PATCHING, TY II 15 INCH	PATCHING, TY III 15 INCH
51	12	6	8.00	0.00	8.00	0.00
52	12	20	26.67	0.00	0.00	0.00
53	12	8	10.67	0.00	10.67	0.00
54	12	6	8.00	0.00	8.00	0.00
55	12	6	8.00	0.00	8.00	0.00
56	12	6	8.00	0.00	8.00	0.00
57	12	150	200.00	0.00	0.00	0.00
58	12	6	8.00	0.00	8.00	0.00
59	12	6	8.00	0.00	8.00	0.00
60	4	60	26.67	0.00	0.00	0.00
61	12	50	66.67	0.00	0.00	0.00
62	12	15	20.00	0.00	0.00	20.00
63	12	6	8.00	0.00	8.00	0.00
64	4	100	44.44	0.00	0.00	0.00
65	4	30	13.33	0.00	13.33	0.00
66	12	6	8.00	0.00	8.00	0.00
67	12	6	8.00	0.00	8.00	0.00
68	12	6	8.00	0.00	8.00	0.00
69	12	7	9.33	0.00	9.33	0.00
70	12	8	10.67	0.00	10.67	0.00
71	12	6	8.00	0.00	8.00	0.00
72	12	10	13.33	0.00	13.33	0.00
73	12	6	8.00	0.00	8.00	0.00
74	12	6	8.00	0.00	8.00	0.00
75	12	10	13.33	0.00	13.33	0.00
SUB-TOTALS			0	175	20	365

PATCHING SCHEDULE- CONT'D

LOCATION NB IL 150		AREA	CLASS C	CLASS C	CLASS C	CLASS C
PATCH #	WIDTH		LENGTH	PATCHING, TY I 15 INCH	PATCHING, TY II 15 INCH	PATCHING, TY III 15 INCH
76	12	12	16.00	0.00	0.00	16.00
77	12	10	13.33	0.00	13.33	0.00
78	12	8	10.67	0.00	10.67	0.00
79	12	6	8.00	0.00	8.00	0.00
80	12	6	8.00	0.00	8.00	0.00
81	12	6	8.00	0.00	8.00	0.00
82	12	8	10.67	0.00	10.67	0.00
83	12	6	8.00	0.00	8.00	0.00
84	12	6	8.00	0.00	8.00	0.00
85	12	6	8.00	0.00	8.00	0.00
86	12	8	10.67	0.00	10.67	0.00
87	12	6	8.00	0.00	8.00	0.00
88	12	7	9.33	0.00	9.33	0.00
89	12	6	8.00	0.00	8.00	0.00
90	12	10	13.33	0.00	13.33	0.00
91	12	8	10.67	0.00	10.67	0.00
92	12	7	9.33	0.00	9.33	0.00
93	12	6	8.00	0.00	8.00	0.00
94	12	12	16.00	0.00	0.00	16.00
95	12	8	10.67	0.00	10.67	0.00
96	12	100	133.33	0.00	0.00	0.00
97	12	6	8.00	0.00	8.00	0.00
98	12	7	9.33	0.00	9.33	0.00
99	12	6	8.00	0.00	8.00	0.00
100	12	6	8.00	0.00	8.00	0.00
SUB-TOTALS			0	204	32	134

MODEL: Patching Schedule 1 [Sheet]
 FILE NAME: c:\p\work\w10101\matthew.wilson@illinois.gov\117521\078C25-Schedule1.dwg

USER NAME = Matthew.Wilson	DESIGNED -	REVISED -
	DRAWN -	REVISED -
	CHECKED -	REVISED -
PLOT DATE = 2/24/2026	DATE -	REVISED -

**STATE OF ILLINOIS
DEPARTMENT OF TRANSPORTATION**

PATCHING SCHEDULE

SCALE: SHEET 11 OF 19 SHEETS STA. TO STA.

F.A.P RTE.	SECTION	COUNTY	TOTAL SHEETS	SHEET NO.
861	111RS-4	Perry	19	11
CONTRACT NO. 78C25				
ILLINOIS FED. AID PROJECT				

PATCHING SCHEDULE- CONT'D							
LOCATION NB IL 150			AREA	CLASS C PATCHING, TY I 15 INCH	CLASS C PATCHING, TY II 15 INCH	CLASS C PATCHING, TY III 15 INCH	CLASS C PATCHING, TY IV 15 INCH
PATCH #	WIDTH	LENGTH	SQ YD	SQ YD	SQ YD	SQ YD	SQ YD
101	12	8	10.67	0.00	10.67	0.00	0.00
102	12	10	13.33	0.00	13.33	0.00	0.00
103	6	6	4.00	4.00	0.00	0.00	0.00
104	12	8	10.67	0.00	10.67	0.00	0.00
105	12	10	13.33	0.00	13.33	0.00	0.00
106	12	8	10.67	0.00	10.67	0.00	0.00
107	12	8	10.67	0.00	10.67	0.00	0.00
108	12	6	8.00	0.00	8.00	0.00	0.00
109	12	6	8.00	0.00	8.00	0.00	0.00
110	12	7	9.33	0.00	9.33	0.00	0.00
111	12	6	8.00	0.00	8.00	0.00	0.00
112	12	8	10.67	0.00	10.67	0.00	0.00
113	12	10	13.33	0.00	13.33	0.00	0.00
114	12	12	16.00	0.00	0.00	16.00	0.00
115	12	6	8.00	0.00	8.00	0.00	0.00
116	12	7	9.33	0.00	9.33	0.00	0.00
117	12	12	16.00	0.00	0.00	16.00	0.00
118	12	6	8.00	0.00	8.00	0.00	0.00
119	12	8	10.67	0.00	10.67	0.00	0.00
120	12	6	8.00	0.00	8.00	0.00	0.00
121	12	12	16.00	0.00	0.00	16.00	0.00
122	12	7	9.33	0.00	9.33	0.00	0.00
123	12	6	8.00	0.00	8.00	0.00	0.00
124	12	7	9.33	0.00	9.33	0.00	0.00
125	12	8	10.67	0.00	10.67	0.00	0.00
126	12	6	8.00	0	8	0	0
NB IL 150 TOTALS:			1652.00	22	1775	184	1060
GROWTH FACTOR:			10%	165.20	3	178	19
TOTAL WITH GROWTH FACTOR:			1817.20	25	1953	203	1166

PATCHING SCHEDULE							
LOCATION SB IL150			AREA	CLASS C PATCHING, TY I 15 INCH	CLASS C PATCHING, TY II 15 INCH	CLASS C PATCHING, TY III 15 INCH	CLASS C PATCHING, TY IV 15 INCH
PATCH #	WIDTH	LENGTH	SQ YD	SQ YD	SQ YD	SQ YD	SQ YD
1	12	8	10.67	0.00	10.67	0.00	0.00
2	12	6	8.00	0.00	8.00	0.00	0.00
3	12	8	10.67	0.00	10.67	0.00	0.00
4	6	6	4.00	4.00	0.00	0.00	0.00
5	12	6	8.00	0.00	8.00	0.00	0.00
6	12	6	8.00	0.00	8.00	0.00	0.00
7	12	6	8.00	0.00	8.00	0.00	0.00
8	12	6	8.00	0.00	8.00	0.00	0.00
9	3	10	3.33	3.33	0.00	0.00	0.00
10	12	6	8.00	0.00	8.00	0.00	0.00
11	6	6	4.00	4.00	0.00	0.00	0.00
12	12	7	9.33	0.00	9.33	0.00	0.00
13	6	10	6.67	0.00	6.67	0.00	0.00
14	12	6	8.00	0.00	8.00	0.00	0.00
15	12	6	8.00	0.00	8.00	0.00	0.00
16	12	6	8.00	0.00	8.00	0.00	0.00
17	12	12	16.00	0.00	0.00	16.00	0.00
18	12	8	10.67	0.00	10.67	0.00	0.00
19	12	6	8.00	0.00	8.00	0.00	0.00
20	12	6	8.00	0.00	8.00	0.00	0.00
21	12	8	10.67	0.00	10.67	0.00	0.00
22	12	6	8.00	0.00	8.00	0.00	0.00
23	12	6	8.00	0.00	8.00	0.00	0.00
24	12	6	8.00	0.00	8.00	0.00	0.00
25	12	10	13.33	0.00	13.33	0.00	0.00
SUB-TOTALS				12	184	16	0

MODEL: Patching 2 (Sheet)
 FILE NAME: c:\p\work\pwr\matthew.wilson@illinois.gov\117521\0578C25-Schedule.sgm

PATCHING SCHEDULE- CONT'D							
LOCATION SB IL 150			AREA	CLASS C PATCHING, TY I 15 INCH	CLASS C PATCHING, TY II 15 INCH	CLASS C PATCHING, TY III 15 INCH	CLASS C PATCHING, TY IV 15 INCH
PATCH #	WIDTH	LENGTH	SQ YD	SQ YD	SQ YD	SQ YD	SQ YD
26	12	6	8.00	0.00	8.00	0.00	0.00
27	12	6	8.00	0.00	8.00	0.00	0.00
28	12	8	10.67	0.00	10.67	0.00	0.00
29	12	6	8.00	0.00	8.00	0.00	0.00
30	12	6	8.00	0.00	8.00	0.00	0.00
31	12	10	13.33	0.00	13.33	0.00	0.00
32	12	6	8.00	0.00	8.00	0.00	0.00
33	12	6	8.00	0.00	8.00	0.00	0.00
34	12	6	8.00	0.00	8.00	0.00	0.00
35	12	6	8.00	0.00	8.00	0.00	0.00
36	6	6	4.00	4.00	0.00	0.00	0.00
37	12	6	8.00	0.00	8.00	0.00	0.00
38	12	8	10.67	0.00	10.67	0.00	0.00
39	12	6	8.00	0.00	8.00	0.00	0.00
40	6	6	4.00	4.00	0.00	0.00	0.00
41	12	6	8.00	0.00	8.00	0.00	0.00
42	12	6	8.00	0.00	8.00	0.00	0.00
43	12	6	8.00	0.00	8.00	0.00	0.00
44	12	10	13.33	0.00	13.33	0.00	0.00
45	12	8	10.67	0.00	10.67	0.00	0.00
46	12	6	8.00	0.00	8.00	0.00	0.00
47	12	6	8.00	0.00	8.00	0.00	0.00
48	12	6	8.00	0.00	8.00	0.00	0.00
49			0.00	0.00	0.00	0.00	0.00
50	12	12	16.00	0.00	0.00	16.00	0.00
SUB-TOTALS				8	187	16	0

PATCHING SCHEDULE- CONT'D							
LOCATION SB IL 150			AREA	CLASS C PATCHING, TY I 15 INCH	CLASS C PATCHING, TY II 15 INCH	CLASS C PATCHING, TY III 15 INCH	CLASS C PATCHING, TY IV 15 INCH
PATCH #	WIDTH	LENGTH	SQ YD	SQ YD	SQ YD	SQ YD	SQ YD
51	12	6	8.00	0.00	8.00	0.00	0.00
52	12	6	8.00	0.00	8.00	0.00	0.00
53	12	10	13.33	0.00	13.33	0.00	0.00
54	12	6	8.00	0.00	8.00	0.00	0.00
55	12	6	8.00	0.00	8.00	0.00	0.00
56	12	6	8.00	0.00	8.00	0.00	0.00
57	12	8	10.67	0.00	10.67	0.00	0.00
58	12	6	8.00	0.00	8.00	0.00	0.00
59	12	6	8.00	0.00	8.00	0.00	0.00
60	12	6	8.00	0.00	8.00	0.00	0.00
61	12	6	8.00	0.00	8.00	0.00	0.00
62	12	12	16.00	0.00	0.00	16.00	0.00
63	12	7	9.33	0.00	9.33	0.00	0.00
64	12	6	8.00	0.00	8.00	0.00	0.00
65	12	7	9.33	0.00	9.33	0.00	0.00
66	12	7	9.33	0.00	9.33	0.00	0.00
67	12	6	8.00	0.00	8.00	0.00	0.00
68	12	12	16.00	0.00	0.00	16.00	0.00
69	12	10	13.33	0.00	13.33	0.00	0.00
70	12	8	10.67	0.00	10.67	0.00	0.00
71	12	7	9.33	0.00	9.33	0.00	0.00
72	12	8	10.67	0.00	10.67	0.00	0.00
SUB-TOTALS				0	184	32	0

MODEL: Patching Schedule 3 [Sheet]
 FILE NAME: c:\p\work\p\id\matthew.wilson@illinois.gov\117521\078C25-Schedule.sgm

USER NAME = Matthew.Wilson	DESIGNED -	REVISED -
	DRAWN -	REVISED -
	CHECKED -	REVISED -
PLOT DATE = 2/24/2026	DATE -	REVISED -

STATE OF ILLINOIS
DEPARTMENT OF TRANSPORTATION

PATCHING SCHEDULE			
SCALE:	SHEET 13	OF 19 SHEETS	STA. TO STA.

F.A.P. RTE.	SECTION	COUNTY	TOTAL SHEETS	SHEET NO.
861	111RS-4	Perry	19	13
CONTRACT NO. 78C25				
ILLINOIS FED. AID PROJECT				

PATCHING SCHEDULE- CONT'D

LOCATION SB IL 150			AREA	CLASS C PATCHING, TY I 15 INCH	CLASS C PATCHING, TY II 15 INCH	CLASS C PATCHING, TY III 15 INCH	CLASS C PATCHING, TY IV 15 INCH
PATCH #	WIDTH	LENGTH	SQ YD	SQ YD	SQ YD	SQ YD	SQ YD
73			0.00	0.00	0.00	0.00	0.00
74	12	6	8.00	0.00	8.00	0.00	0.00
75	12	6	8.00	0.00	8.00	0.00	0.00
76	12	6	8.00	0.00	8.00	0.00	0.00
77	12	7	9.33	0.00	9.33	0.00	0.00
78	12	6	8.00	0.00	8.00	0.00	0.00
79	12	6	8.00	0.00	8.00	0.00	0.00
80	12	6	8.00	0.00	8.00	0.00	0.00
81	12	6	8.00	0.00	8.00	0.00	0.00
82	12	8	10.67	0.00	10.67	0.00	0.00
83	12	7	9.33	0.00	9.33	0.00	0.00
84	12	10	13.33	0.00	13.33	0.00	0.00
85	12	10	13.33	0.00	13.33	0.00	0.00
86	12	6	8.00	0.00	8.00	0.00	0.00
87	12	6	8.00	0.00	8.00	0.00	0.00
88	12	8	10.67	0.00	10.67	0.00	0.00
89	12	8	10.67	0.00	10.67	0.00	0.00
90	12	6	8.00	0.00	8.00	0.00	0.00
91	12	7	9.33	0.00	9.33	0.00	0.00
92	12	7	9.33	0.00	9.33	0.00	0.00
93	12	7	9.33	0.00	9.33	0.00	0.00
94	12	6	8.00	0.00	8.00	0.00	0.00
95	15	20	33.33	0.00	0.00	0.00	33.33
SB IL 150 TOTALS:			864.67	20	749	64	34
GROWTH FACTOR			10%	86.47	2	75	7
TOTAL WITH GROWTH FACTOR:			951.13	22	824	71	38
IL 150 TOTALS				47	2777	274	1204

MODEL: Patching Schedule 4 [Sheet]
 FILE NAME: c:\p\work\w10101\matthew.wilson@illinois.gov\117521\0578C25-Schedule.sgm

HMA PAVEMENT SCHEDULE																
LOCATION STATION TO STATION IL 150	LENGTH	WIDTH	AGG SHLD WIDTH (EXISTING)		TEMP RAMP	HOT-MIX ASPHALT SURFACE REMOVAL, 1-3/4"	HOT-MIX ASPHALT BINDER COURSE, IL-9.5 FG, N70 (1-1/2")	HOT-MIX ASPHALT SURFACE COURSE, IL-9.5, MIX-C, N70 (1-1/2" , 1-3/4")	BIT MATL (TACK COAT)	MTD	LNG JOINT SEALANT	AREA REFLECTIVE CRACK CONTROL	AGG SHLD WEDGE, TYPE B	NOTE	FOR INFORMATIONAL PURPOSE ONLY	
			LT	RT											SQ YD	TON
			FT	FT											FT	FT
PERRY COUNTY																
57+40.00	TO	133+73.20	7,633	24	3	3	28	20,355	1,737	1,728	13,740	3,465	7,633	20,355	435	
133+73.20	TO	139+45.70	573	24	N/A	N/A	0	1,528	N/A	152	688	NA	573	1,528	N/A	**SN 073-2002, 1 3/4" SURF CSE
139+45.70	TO	202+69.20	6,324	24	3	3	0	16,864	1,439	1,431	11,384	2,870	6,324	16,864	361	
202+69.20	TO	205+81.30	312	24	8	8	0	832	71	71	562	142	312	832	18	
205+81.30	TO	206+44.20	63	VARIES	8	8	28	343	29	29	232	58	63	343	4	
TOTAL							56	39,922	3,276	3,411	26,606	6,535	14,905	39,922	818	

ENTRANCE SCHEDULE														
LOCATION FAP 861 (IL 150)	ENT TYPE	EOP	WIDTH 4' O/S	RDWY AREA	INCIDENTAL HMA SURFACING	AGG WEDGE SHLD, TYPE B	BIT. MATL (TACK COAT)	FOR INFO PURPOSES ONLY						
								MATERIAL	FT	FT	SQ YD	TON	TON	POUND
								ENTRANCES						
151+65.00	LT	CE	PCC	100	100	45	4	5	21					
151+65.00	RT	CE	PCC	100	100	45	4	5	21					
IL 150 TOTAL							8	10	42					

MODEL: Resurfacing Schedule (Sheet)
 FILE NAME: c:\p\work\pav\matthew.wilson@illinois.gov\117521\078C25-Schedules.dgn

USER NAME = Matthew.Wilson	DESIGNED -	REVISED -
	DRAWN -	REVISED -
	CHECKED -	REVISED -
PLOT DATE = 3/12/2026	DATE -	REVISED -

STATE OF ILLINOIS
DEPARTMENT OF TRANSPORTATION

HMA PAVEMENT AND
ENTRANCE SCHEDULES

SCALE: SHEET 15 OF 19 SHEETS STA. TO STA.

F.A.P. RTE.	SECTION	COUNTY	TOTAL SHEETS	SHEET NO.
861	111RS-4	Perry	19	15
CONTRACT NO. 78C25				
ILLINOIS FED. AID PROJECT				

TEMPORARY PAVEMENT MARKING SCHEDULE

LOCATION STATION TO STATION					ROADWAY LENGTH	TEMPORARY PAVEMENT MARKING				PAVEMENT MARKING REMOVAL GRINDING	SHORT TERM PAVEMENT MARKING	SHORT TERM PAVEMENT MARKING REMOVAL	COMMENTS
						LINE - 4" WHITE	LINE - 4" YELLOW		LINE- 24" WHITE				
						SOLID	SOLID	SKIP - DASH	SOLID				
						FOOT	FOOT	FOOT	FOOT				
STA	57+40.00	TO	STA	60+75.00	335	670	335	84	0	363	183	61	SB-NPZ
STA	60+75.00	TO	STA	112+81.00	5206	10,412		1,302	0	3,905	1,422	474	
STA	112+81.00	TO	STA	121+75.00	894	1,788	894	224	0	969	489	163	NB-NPZ
STA	121+75.00	TO	STA	123+39.00	164	328		41	0	123	45	15	
STA	123+39.00	TO	STA	130+15.00	676	1,352	676	169	0	732	369	123	SB-NPZ
STA	130+15.00	TO	STA	178+55.00	4840	9,680		1,210	0	3,630	1,320	440	
STA	178+55.00	TO	STA	187+49.00	894	1,788	894	224	0	969	489	163	NB-NPZ
STA	187+49.00	TO	STA	189+41.00	192	384		48	0	144	54	18	
STA	189+41.00	TO	STA	196+35.00	694	1,388	694	174	0	752	381	127	SB-NPZ
STA	196+35.00	TO	STA	206+44.20	1009	2,018		252	33	823	276	92	STOP BAR
TOTAL						37,027			33	12,409	5,028	1,676	

PAVEMENT MARKING SCHEDULE

LOCATION STATION TO STATION					ROADWAY LENGTH	PAINT PAVEMENT MARKING				RAISED REFLECTIVE PAVEMENT MARKER	RAISED REFLECTIVE PAVEMENT MARKER REMOVAL	SINUSOIDAL RUMBLE STRIPS 14"	COMMENTS
						LINE - 4" WHITE	LINE - 4" YELLOW		LINE- 24" WHITE				
						SOLID	SOLID	SKIP - DASH	SOLID				
						FOOT	FOOT	FOOT	FOOT				
STA	57+40.00	TO	STA	60+75.00	335	670	335	84	0	5	5	335	SB-NPZ
STA	60+75.00	TO	STA	112+81.00	5206	10,412		1,302	0	66	66	5206	
STA	112+81.00	TO	STA	121+75.00	894	1,788	894	224	0	12	12	894	NB-NPZ
STA	121+75.00	TO	STA	123+39.00	164	328		41	0	3	3	164	
STA	123+39.00	TO	STA	130+15.00	676	1,352	676	169	0	9	9	676	SB-NPZ
STA	130+15.00	TO	STA	178+55.00	4840	9,680		1,210	0	61	61	4840	
STA	178+55.00	TO	STA	187+49.00	894	1,788	894	224	0	12	12	894	NB-NPZ
STA	187+49.00	TO	STA	189+41.00	192	384		48	0	3	3	192	
STA	189+41.00	TO	STA	196+35.00	694	1,388	694	174	0	9	9	694	SB-NPZ
STA	196+35.00	TO	STA	206+44.20	1009	2,018		252	33	13	13	1009	STOP BAR
TOTAL					14,904	37,027			33	193	193	14904	

MODEL: Pavement Marking Schedule (Sheet)
 FILE NAME: c:\p\work\pav\matthew.wilson@illinois.gov\1197521\0678C25-Schedules.dgn

USER NAME = Matthew.Wilson	DESIGNED -	REVISED -
	DRAWN -	REVISED -
	CHECKED -	REVISED -
PLOT DATE = 3/2/2026	DATE -	REVISED -

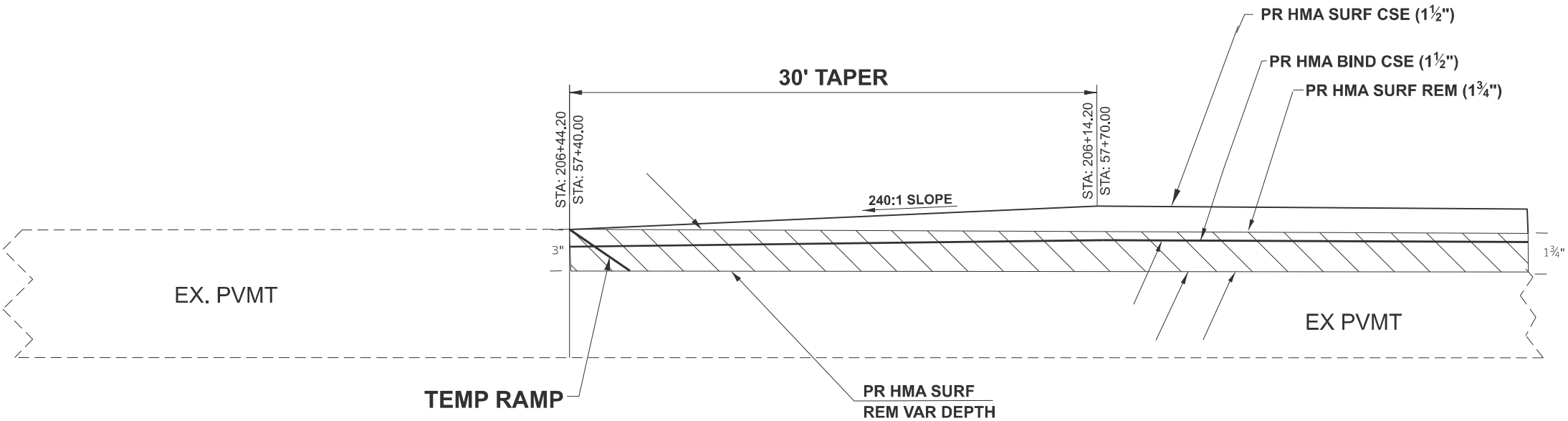
**STATE OF ILLINOIS
DEPARTMENT OF TRANSPORTATION**

PAVEMENT MARKING SCHEDULES

SCALE: SHEET 16 OF 19 SHEETS STA. TO STA.

F.A.P. RTE.	SECTION	COUNTY	TOTAL SHEETS	SHEET NO.
861	111RS-4	Perry	19	16
CONTRACT NO. 78C25				
ILLINOIS FED. AID PROJECT				

HMA TRANSITIONS



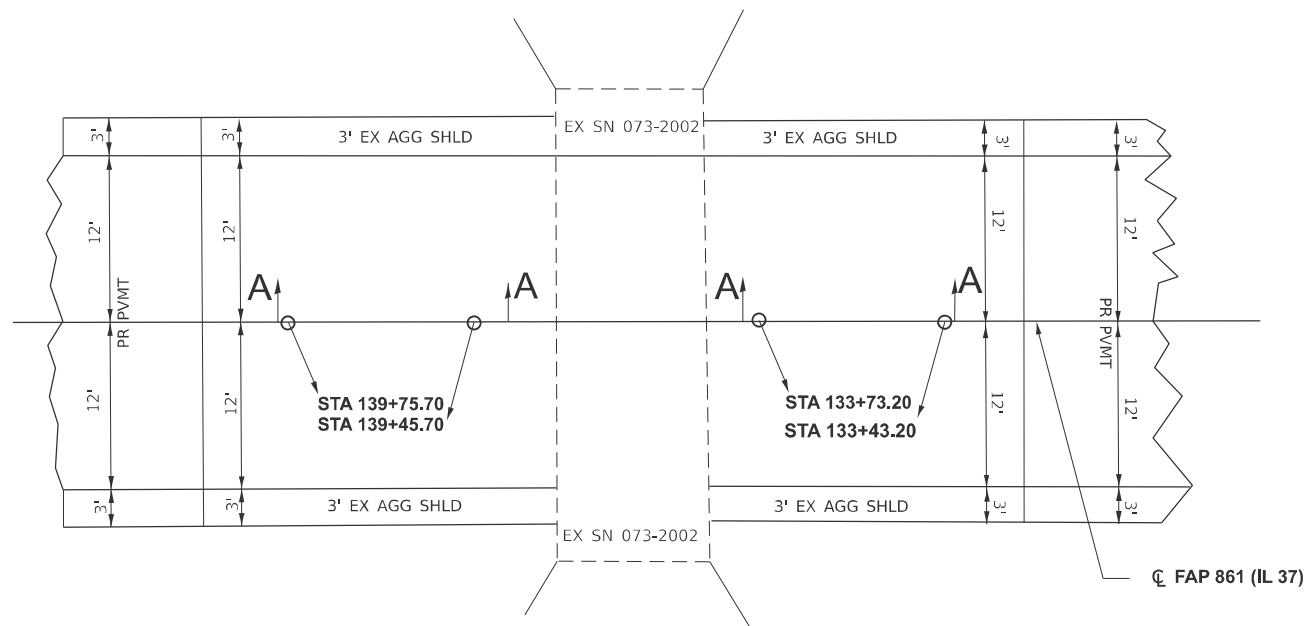
TO BE USED:
 STA: 57+40.00 TO STA: 57+70.00
 STA: 206+14.20 TO 206+44.20

*VARIABLE DEPTH MILLING IS INCLUDED IN THE COST OF HOT MIX ASPHALT SURFACE REMOVAL 1½"

MODEL: HMA Transitions (Sheet)
 FILE NAME: c:\p\work\p1\matthew.wilson@illinois.gov\117521\078C25-District\17.dgn

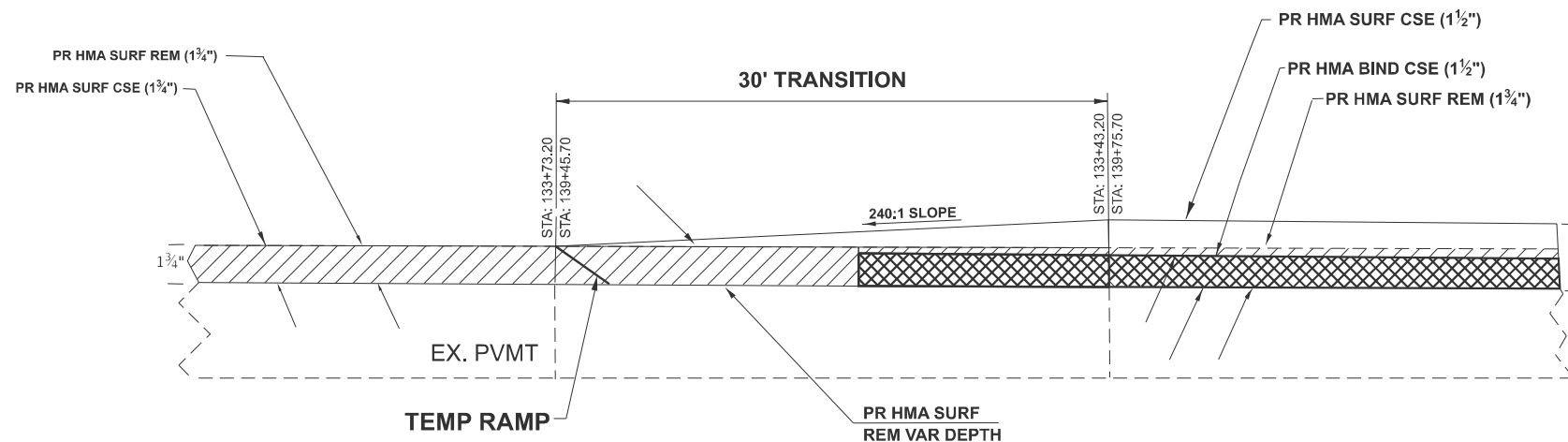
USER NAME = Matthew.Wilson PLOT DATE = 3/12/2026	DESIGNED - DRAWN - CHECKED - DATE -	REVISED - REVISED - REVISED - REVISED -	STATE OF ILLINOIS DEPARTMENT OF TRANSPORTATION	HMA TRANSITIONS SCALE: SHEET 17 OF 19 SHEETS STA. TO STA.	<table border="1" style="font-size: small;"> <tr> <th>F.A.P. RTE.</th> <th>SECTION</th> <th>COUNTY</th> <th>TOTAL SHEETS</th> <th>SHEET NO.</th> </tr> <tr> <td>861</td> <td>111RS-4</td> <td>Perry</td> <td>19</td> <td>17</td> </tr> <tr> <td colspan="5" style="text-align: center;">CONTRACT NO. 78C25</td> </tr> <tr> <td colspan="5" style="text-align: center;">ILLINOIS FED. AID PROJECT</td> </tr> </table>	F.A.P. RTE.	SECTION	COUNTY	TOTAL SHEETS	SHEET NO.	861	111RS-4	Perry	19	17	CONTRACT NO. 78C25					ILLINOIS FED. AID PROJECT				
F.A.P. RTE.	SECTION	COUNTY	TOTAL SHEETS	SHEET NO.																					
861	111RS-4	Perry	19	17																					
CONTRACT NO. 78C25																									
ILLINOIS FED. AID PROJECT																									

TRANSITION DETAIL



SECTION A-A

TRANSITION DETAIL



SECTION A-A

MODEL: Inlay And Butt Joint Details [Sheet]
FILE NAME: c:\p\work\w10\matthew.wilson@illinois.gov\117521\078C25-District\Std.dgn

DRAWN	03-16-23
REVISED	
REVISED	
REVISED	

STD. 9-14

USER NAME = Matthew.Wilson	DESIGNED -	REVISED -
	DRAWN -	REVISED -
	CHECKED -	REVISED -
PLOT DATE = 3/13/2026	DATE -	REVISED -

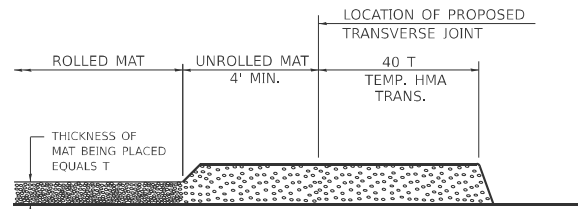
**STATE OF ILLINOIS
DEPARTMENT OF TRANSPORTATION**

TRANSITION DETAILS

SCALE: SHEET 18 OF 19 SHEETS STA. TO STA.

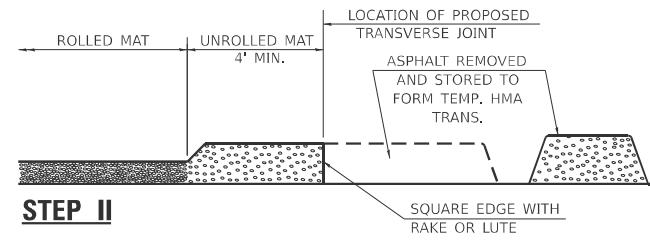
F.A.P. RTE.	SECTION	COUNTY	TOTAL SHEETS	SHEET NO.
861	111RS-4	Perry	19	18
CONTRACT NO. 78C25				
ILLINOIS FED. AID PROJECT				

TEMPORARY HOT-MIX ASPHALT TRANSITIONS



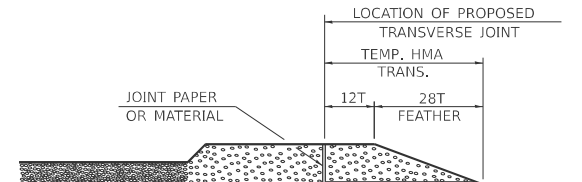
STEP I

1. PLACE HOT-MIX ASPHALT MAT, LENGTH 40 TIMES THE THICKNESS OF THE MAT BEING PLACED PAST THE PROPOSED TRANSVERSE JOINT LOCATION USING NORMAL OPERATING PROCEDURES. EXTREME CARE SHOULD BE TAKEN TO MAINTAIN ENOUGH MATERIAL IN FRONT OF THE SCREED TO MAINTAIN REQUIRED PAVING DEPTH.



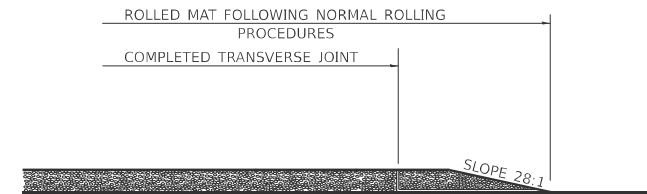
STEP II

1. MOVE THE PAVER OUT OF THE WAY AND REMOVE THE ASPHALT FROM THE AREA OF THE PROPOSED TEMPORARY HOT-MIX ASPHALT TRANSITION.
2. SQUARE UP THE END OF THE MAT WITH A RAKE OR LUTE.
3. NOTE THAT THE MAT WITHIN 4' OF THE END OF JOINT IS NOT TO BE ROLLED AT THIS TIME.



STEP III

1. JOINT PAPER OR OTHER PRESELECTED JOINT MATERIAL IS THEN PLACED IN THE CLEARED AREA AND THE EXCESS ASPHALT USED TO HAND FORM A TRANSITION TO THE DIMENSIONS SHOWN ABOVE.
2. NOTE THAT IN CONSTRUCTING THE TRANSITION, THE MAT DEPTH IS CONTINUED AS PART OF THE TRANSITION BEFORE FORMING THE FEATHER.



STEP IV

1. COMPLETE TEMPORARY TRANSITION BY ROLLING.
2. TO RESUME PAVING, AT THE JOINT, REMOVE TEMPORARY TRANSITION AND DISPOSE OF THE MATERIAL ACCORDING TO ART. 202.03 OF THE STD. SPECS. (COST INCLUDED IN THE CONTRACT).
3. CONSTRUCTING THE TEMPORARY TRANSITIONS WILL NOT BE PAID FOR SEPARATELY IN ACCORDANCE WITH ARTICLE 406.14 OF THE STANDARD SPECIFICATIONS.

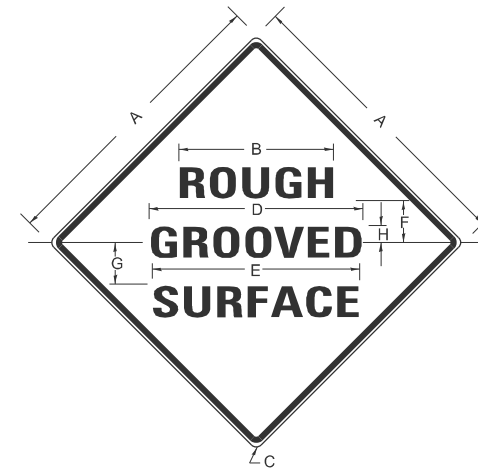
REDRAWN	2-15-89
REVISED	8-16-94
REVISED	01-09-07
RESIZED	05-08-08
REVISED	05-16-13
REVISED	10-21-21

STD. 9-26

DRAWN	02-15-89
REVISED	03-27-08
REVISED	10-21-21
REVISED	05-27-22

STD. 9-23

ILLINOIS STANDARD ROUGH GROOVED SURFACE SIGN



COLORS

LEGEND AND BORDER- BLACK NON-REFLECTORIZED
BACKGROUND- ORANGE REFLECTORIZED

SIGN SIZE	DIMENSIONS							
	A	B	C	D	E	F	G	H
48X48	48.0	24.1	3.0	34.0	33.0	6.0	13.0	3.5

SIGN SIZE	SERIES LINES			MAR-GIN	BOR-DER	BLANK STD.
	1	2	3			
48X48	7C	7C	7C	0.8	1.2	B4-48D

ALL DIMENSIONS IN INCHES

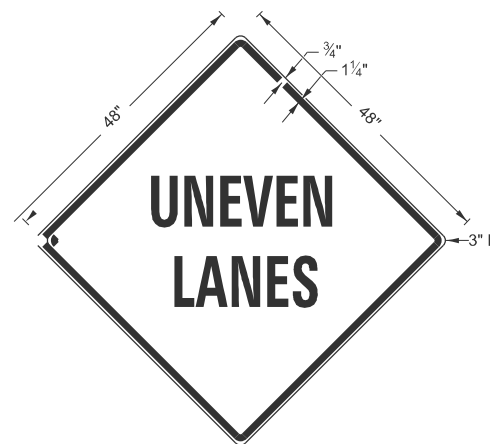
NOTES

PRIOR TO ALLOWING TRAFFIC ON ANY PORTION OF THE ROADWAY THAT HAS BEEN COLDMILLED, THE CONTRACTOR SHALL HAVE ERECTED "ROUGH GROOVED SURFACE" SIGNS THAT CONFORM TO THE ABOVE DETAILS. A MINIMUM OF ONE SIGN AT EACH END OF THE IMPROVEMENT WILL BE REQUIRED. THE CONTRACTOR SHALL MAINTAIN THE "ROUGH GROOVED SURFACE" SIGNS UNTIL THE COLDMILLED SURFACE IS COVERED WITH LEVELING BINDER OR SURFACE COURSE.

IF AT ANY TIME THE SIGNS ARE IN PLACE BUT NOT APPLICABLE, THEY SHALL BE TURNED FROM THE VIEW OF MOTORISTS OR COVERED AS DIRECTED BY THE ENGINEER.

THE COST OF FURNISHING, ERECTING, MAINTAINING, AND REMOVING THE REQUIRED SIGNS SHALL BE INCLUDED IN THE CONTRACT.

UNEVEN LANES SIGN W8-11 (48" X 48")



COLORS:

LEGEND AND BORDER - BLACK NON-REFLECTORIZED
BACKGROUND - ORANGE REFLECTORIZED

NOTE: PRIOR TO ALLOWING TRAFFIC ON ANY PORTION OF THE ROADWAY THAT HAS BEEN COLDMILLED OR BEFORE RESURFACING OPERATIONS BEGIN, THE CONTRACTOR SHALL HAVE ERECTED "UNEVEN PAVEMENT" SIGNS THAT CONFORM TO THE ABOVE DETAILS. A MINIMUM OF ONE SIGN AT EACH END OF THE IMPROVEMENT WILL BE REQUIRED. THE CONTRACTOR SHALL MAINTAIN THE "UNEVEN PAVEMENT" SIGNS UNTIL THE RESURFACING OPERATIONS ARE COMPLETED.

IF AT ANY TIME THE SIGNS ARE IN PLACE BUT NOT APPLICABLE, THEY SHALL BE TURNED FROM THE VIEW OF MOTORISTS OR COVERED AS DIRECTED BY THE ENGINEER.

THE COST OF FURNISHING, ERECTING, MAINTAINING, AND REMOVING THE REQUIRED SIGNS SHALL BE INCLUDED IN THE CONTRACT.

DRAWN	02-15-89
REVISED	05-08-08
REVISED	10-21-21
REVISED	05-27-22

STD. 9-24

STATE OF ILLINOIS
DEPARTMENT OF TRANSPORTATION

DISTRICT DETAILS

SCALE: SHEET 19 OF 19 SHEETS STA. TO STA.

F.A.P. RTE.	SECTION	COUNTY	TOTAL SHEETS	SHEET NO.
861	111RS-4	Perry	19	19
CONTRACT NO. 78C25				
ILLINOIS FED. AID PROJECT				

USER NAME = Matthew.Wilson	DESIGNED -	REVISED -
	DRAWN -	REVISED -
	CHECKED -	REVISED -
PLOT DATE = 2/20/2026	DATE -	REVISED -