

**INDEX OF SHEETS**

06-12-2026 LETTING ITEM 203

**SHEET NO. DESCRIPTION**

- 1. COVER SHEET
- 2. SUMMARY OF QUANTITIES
- 3. SCHEDULE OF QUANTITIES AND GENERAL NOTES
- 4. TYPICAL CROSS SECTIONS
- 5. PLAN AND PROFILE
- 6. SHOULDER AND GUARDRAIL LAYOUT
- 7-17. BRIDGE PLANS
- 18-25. STATION CROSS SECTIONS

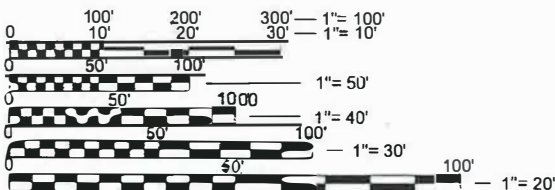
**HIGHWAY STANDARDS:**

- 000001-09 STANDARD SYMBOLS, ABBREVIATIONS, AND PATTERNS
- 280001-07 TEMPORARY EROSION CONTROL SYSTEMS
- 515001-04 NAME PLATE FOR BRIDGES
- 601001-05 PIPE UNDERDRAINS
- 630001-13 CONCRETE HEADWALL FOR PIPE UNDERDRAINS
- 630301-09 SHOULDER WIDENING FOR TYPE 1 (SPECIAL) GUARDRAIL TERMINALS
- 631032-10 TRAFFIC BARRIER TERMINAL, TYPE 6A
- 701001-02 OFF-RD OPERATIONS, 2L, 2W, MORE THAN 15' (4.5mm) AWAY
- 701006-05 OFF-RD OPERATIONS, 2L, 2W, 15' (4.5mm) TO 24" (600mm) FROM PAVEMENT EDGE
- 701901-11 TRAFFIC CONTROL DEVICES
- 725001-01 OBJECT AND TERMINAL MARKERS
- 782006-01 GUARDRAIL AND BARRIER WALL REFLECTOR MOUNTING DETAILS
- BLR 21-9 TYPICAL APPLICATION OF TRAFFIC CONTROL DEVICES FOR CONSTRUCTION ON RURAL LOCAL HIGHWAYS

**UTILITIES**

AT&T  
100 COMMERCE DRIVE  
OAK BROOK, IL 60523

COMED  
PUBLIC RELOCATION DEPARTMENT  
ONE LINCOLN CENTER, SUITE 600  
OAKBRIDGE TERRACE, IL 60181  
Lisa.argast@comed.com



FULL SIZE PLANS HAVE BEEN PREPARED USING STANDARD ENGINEERING SCALES. REDUCED SIZED PLANS WILL NOT CONFORM TO STANDARD SCALES. IN MAKING MEASUREMENTS ON REDUCED PLANS, THE ABOVE SCALES MAY BE USED.

STATE OF ILLINOIS

DEPARTMENT OF TRANSPORTATION

**PLANS FOR PROPOSED  
FEDERAL AID PROJECT  
LOCAL BRIDGE FORMULA PROGRAM**

PROJECT 7M6S(350)

SECTION 23-00306-00-BR

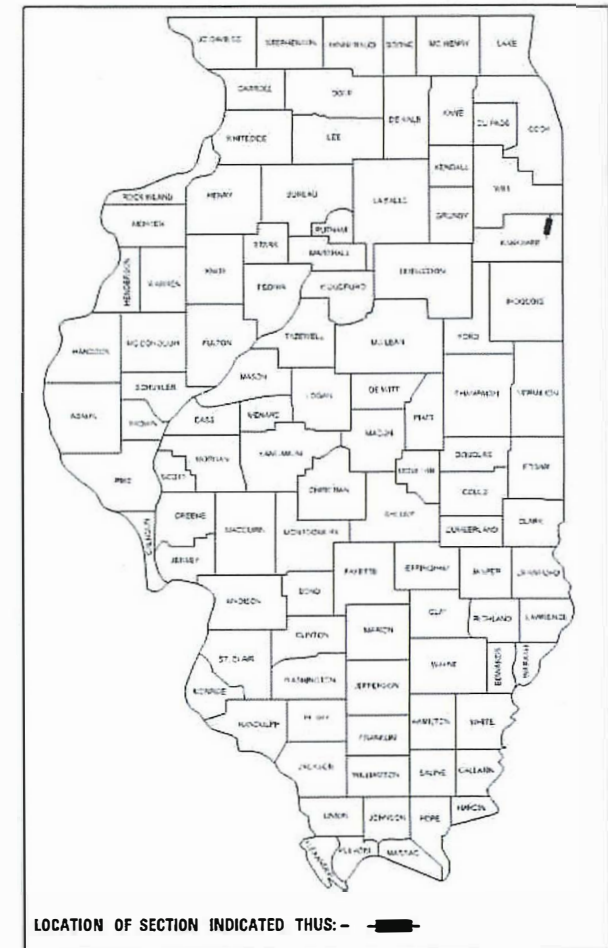
KANKAKEE COUNTY

F.A.S. 1293 / C.H. 14 / VINCENNES TRAIL

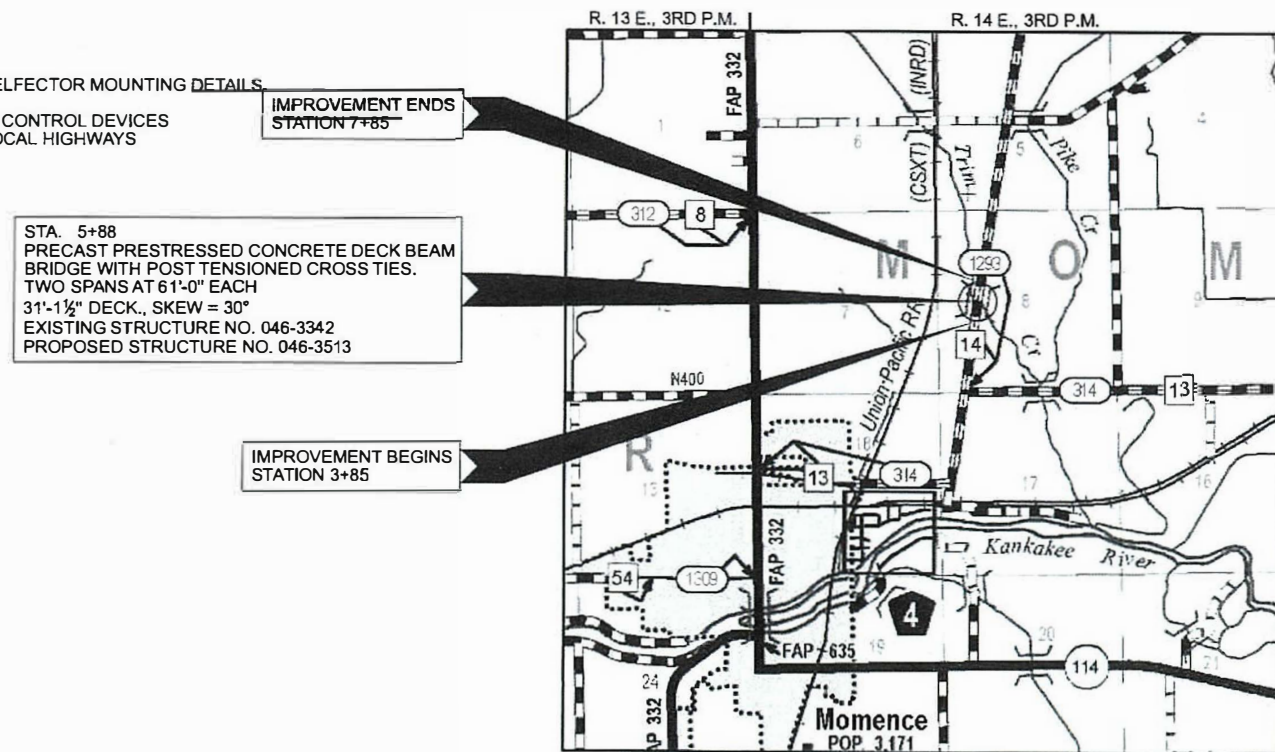
PROPOSED STRUCTURE NO. 046-3513

JOB C-93-005-25

ROUTE NO.	SECTION	COUNTY	TOTAL SHEETS	SHEET NO.
F.A.S. 1293	23-00306-00-BR	KANKAKEE	25	1
		ILLINOIS	CONTRACT NO. 87851	



LOCATION OF SECTION INDICATED THUS: -



**LOCATION MAP**

APPROXIMATE SCALE: 0 1/2 MILE  
NET LENGTH OF SECTION = 400 FEET = 0.076 MILES  
FUNCTIONAL CLASSIFICATION: MAJOR COLLECTOR  
DESIGN SPEED: 50 MPH  
DESIGN TRAFFIC: 1,200 ADT  
3R DESIGN GUIDELINES ARE USED



**WARNING**  
CALL JULIE TOLL FREE  
1-800-892-0129  
**CALL 811  
BEFORE YOU DIG**  
DIG NO: A231993336

**ILLINOIS DEPARTMENT OF TRANSPORTATION**

APPROVED *[Signature]* 4/13/25  
COUNTY ENGINEER

PASSED *[Signature]* April 10, 2025  
DISTRICT THREE ENGINEER OF LOCAL ROADS & STREETS

Releasing For Bid Based on Limited Review  
*[Signature]* April 10, 2025  
REGION TWO ENGINEER

STATE OF ILLINOIS  
DEPARTMENT OF TRANSPORTATION



**HAMPTON, LENZINI AND RENWICK, INC.**  
CIVIL ENGINEERS • STRUCTURAL ENGINEERS • LAND SURVEYORS  
3085 STEVENSON DRIVE SUITE 201  
SPRINGFIELD, ILLINOIS 62703  
217.546.3400 www.hlrengineering.com

SUMMARY OF QUANTITIES			
CODE NO.	ITEM	CONSTRUCTION TYPE CODE 0010	
		UNIT	TOTAL QUANTITY
20200100	EARTH EXCAVATION	CU YD	55
20300100	CHANNEL EXCAVATION	CU YD	280
20400800	FURNISHED EXCAVATION	CU YD	100
25100630	EROSION CONTROL BLANKET	SQ YD	1,206
28000305	TEMPORARY DITCH CHECKS	FOOT	34
28000500	INLET AND PIPE PROTECTION	EACH	1
28100107	STONE RIPRAP, CLASS A4	SQ YD	602
28200200	FILTER FABRIC	SQ YD	602
35650300	BASE COURSE WIDENING 8"	SQ YD	114
40200100	AGGREGATE SURFACE COURSE, TYPE A	TON	94
40600275	BITUMINOUS MATERIALS (PRIME COAT)	POUND	258
40600290	BITUMINOUS MATERIALS (TACK COAT)	POUND	197
40600982	HOT-MIX ASPHALT SURFACE REMOVAL - BUTT JOINT	SQ YD	232
40603080	HOT-MIX ASPHALT BINDER COURSE, IL-19.0, N50	TON	42
40604050	HOT-MIX ASPHALT SURFACE COURSE, IL-9.5, MIX "C", N50	TON	106
48101200	AGGREGATE SHOULDERS, TYPE B	TON	102
50100100	REMOVAL OF EXISTING STRUCTURES	EACH	1
50105220	PIPE CULVERT REMOVAL	FOOT	111
50201101	COFFERDAM (TYPE 1) (LOCATION - 1)	EACH	1
50300225	CONCRETE STRUCTURES	CU YD	51.2
50300280	CONCRETE ENCASEMENT	CU YD	7.1
50300300	PROTECTIVE COAT	SQ YD	22
50400505	PRECAST PRESTRESSED CONCRETE DECK BEAMS (27" DEPTH)	SQ FT	3,660
50800205	REINFORCEMENT BARS, EPOXY COATED	POUND	5,690
* 50900209	STEEL RAILING, TYPE SMX	FOOT	244
51201400	FURNISHING STEEL PILES HP10X42	FOOT	120
51201600	FURNISHING STEEL PILES HP12X53	FOOT	60
51265002	DRILLING AND SETTING PILES (IN ROCK)	CU FT	217
51500100	NAME PLATES	EACH	1
542D0220	PIPE CULVERTS, CLASS D, TYPE 1 15"	FOOT	70
542D0223	PIPE CULVERTS, CLASS D, TYPE 1 18"	FOOT	74
58100200	WATERPROOFING MEMBRANE SYSTEM	SQ YD	427

\* SPECIALTY ITEMS

SUMMARY OF QUANTITIES			
CODE NO.	ITEM	CONSTRUCTION TYPE CODE 0010	
		UNIT	TOTAL QUANTITY
58300100	PORTLAND CEMENT MORTAR FAIRING COURSE	FOOT	275
58600101	GRANULAR BACKFILL FOR STRUCTURES	CU YD	97
59100100	GEOCOMPOSITE WALL DRAIN	SQ YD	57
60100060	CONCRETE HEADWALLS FOR PIPE DRAINS	EACH	4
60146304	PIPE UNDERDRAINS FOR STRUCTURES 4"	FOOT	142
* 63000001	STEEL PLATE BEAM GUARDRAIL, TYPE A, 6 FOOT POSTS	FOOT	75
* 63100087	TRAFFIC BARRIER TERMINAL, TYPE 6A	EACH	2
* 63100167	TRAFFIC BARRIER TERMINAL, TYPE 1 (SPECIAL) TANGENT	EACH	2
67100100	MOBILIZATION	L SUM	1
* 72501000	TERMINAL MARKER - DIRECT APPLIED	EACH	4
* 78200005	GUARDRAIL REFLECTORS, TYPE A	EACH	8
X2501000	SEEDING, CLASS 2 (SPECIAL)	ACRE	0.3
X7010216	TRAFFIC CONTROL AND PROTECTION, (SPECIAL)	L SUM	1
Z0013798	CONSTRUCTION LAYOUT	L SUM	1

\* SPECIALTY ITEMS

EARTHWORK SCHEDULE								
LOCATION	EARTH EXCAVATION	CHANNEL EXCAVATION	MISC. EXCAVATION	SHRINKAGE FACTOR	PERCENT USED	EXCAVATION ADJUSTED FOR SHRINKAGE	EMBANKMENT REQUIRED	EARTHWORK BALANCE
	CU.YD.	CU.YD.	CU.YD.			CU.YD.	CU.YD.	CU.YD.
F.A.S. 1293 / C.H. 14								
STA. 3+85.00 TO STA. 5+26.21	12			25.00%	100.00%	9	164	-155
STA. 5+26.21 TO STA. 6+49.81		280		25.00%	70.00%	147		147
STA. 6+49.81 TO STA. 8+52.00	42			25.00%	100.00%	31	214	-183
ENTRANCES							10	-10
EXCAVATION FROM RIPRAP			268	25.00%	50.00%	101		101
TOTAL	53	280	268			288	387	-100
USE	55	280	270					100

FURNISHED 100 CU YDS

FILE NAME = 230505-shit-summary.dgn	USER NAME = rmosck	DESIGNED - J.W.F.	REVISED -
HAMPTON, LENZINI AND RENWICK, INC. 3088 STEVENSON DRIVE, SUITE 201 SPRINGFIELD, ILLINOIS 62710 ILLINOIS PROFESSIONAL DESIGN FIRM LS / PE / SE CORP. 184.000959	PLOT SCALE = \$SCALES	DRAWN - D.M.F.	REVISED -
	PLOT DATE = 5/8/2025	CHECKED - S.W.M.	REVISED -
		DATE - 05/07/2025	REVISED -

STATE OF ILLINOIS  
KANKAKEE COUNTY HIGHWAY DEPARTMENT

SUMMARY OF QUANTITIES

SCALE: NONE SHEET NO. 1 OF 1 SHEETS

C.H.	SECTION	COUNTY	TOTAL SHEETS	SHEET NO.
14	23-00306-00-BR	KANKAKEE	25	2
CONTRACT NO. 87851				
C-93-005-25		ILLINOIS PROJECT NO. 7M6S(350)		

**GENERAL NOTES**

- 1) ALL CLEARING, GRUBBING, FENCE REMOVAL, PAVEMENT REMOVAL, AND REMOVAL OF EXISTING DRAINAGE STRUCTURES INCLUDING EXISTING PIPE CULVERTS, SHALL BE INCLUDED IN THE COST OF EARTH EXCAVATION. ALL AGGREGATE AND BITUMINOUS PAVEMENT SHALL BE REMOVED AND PROPERLY DISPOSED OF BY THE CONTRACTOR IN A METHOD APPROVED BY THE ENGINEER. REMOVAL AND DISPOSAL OF PAVEMENT SHALL BE INCLUDED IN THE COST OF EARTH EXCAVATION AND NO ADDITIONAL COMPENSATION WILL BE ALLOWED.
- 2) WHERE SECTION OR SUBSECTION MONUMENTS ARE ENCOUNTERED, THE ENGINEER SHALL BE NOTIFIED BEFORE SUCH MONUMENTS ARE REMOVED. THE CONTRACTOR SHALL PROTECT AND CAREFULLY PRESERVE ALL PROPERTY MARKS AND MONUMENTS UNTIL THE OWNER, AN AUTHORIZED SURVEYOR OR AGENT HAS WITNESSED OR OTHERWISE REFERENCED THEIR LOCATION.
- 3) ANY REFERENCE TO STANDARDS THROUGHOUT THE PLANS OR SPECIAL PROVISIONS SHALL BE INTERPRETED TO BE THE LATEST STANDARD OF THE DEPARTMENT.
- 4) THE LOCATION ON THE PLANS OF EXISTING DRAINAGE STRUCTURES, TELEPHONE LINES, ELECTRIC LINES, WATER SERVICE LINES, GAS MAINS, AND OTHER UTILITY FACILITIES AS SHOWN ON THE PLANS ARE BASED ON FIELD INVESTIGATIONS AND THE BEST INFORMATION AVAILABLE, BUT THE LOCATIONS ARE NOT GUARANTEED. IT SHALL BE THE CONTRACTOR'S RESPONSIBILITY TO ASCERTAIN THEIR EXACT LOCATION FROM THE INDIVIDUAL UTILITY COMPANIES AND BY FIELD INSPECTION.
- 5) THE CONTRACTOR SHALL CONSULT THE ENGINEER IN REGARD TO THE EXACT LENGTH OF PIPE CULVERTS AND PIPE DRAINS BEFORE ORDERING THESE ITEMS.
- 6) THE FOLLOWING RATES OF APPLICATION HAVE BEEN USED IN CALCULATING PLAN QUANTITIES
 

AGGREGATE BASE COURSE	2.05 TON/CU YD
AGGREGATE SHOULDERS	2.05 TON/CU YD
POROUS GRANULAR EMBANKMENT	2.0 TON/CU YD
HOT MIX ASPHALT	112.0 LB/SY/IN

**BITUMINOUS MATERIALS APPLICATION RATES**

SURFACE TYPE	RESIDUAL RATE
AGGREGATE BASE (PRIME COAT)	0.250 LB/SQ FT
MILLED HMA OR PCC (TACK COAT)	0.050 LB/SQ FT
EXISTING PAVEMENT (TACK COAT)	0.050 LB/SQ FT
TACK COAT (BETWEEN LIFTS)	0.025 LB/SQ FT

- 7) THE FINAL SURFACE OF ALL EMBANKMENT AREAS SHALL BE SEEDED. THE TOP 4 INCHES OF THE SEEDED AREAS SHALL BE TOPSOIL SUBJECT TO THE APPROVAL OF THE ENGINEER. THE COST OF SHAPING THE SLOPES AND PROVIDING TOP SOIL WILL NOT BE PAID FOR SEPARATELY BUT SHALL BE INCLUDED IN THE COST OF EARTH EXCAVATION.
- 8) THE AREA TO BE SEEDED SHALL CONSIST OF ALL DISTURBED EARTH SURFACES WITHIN THE RIGHT OF WAY OR AS DIRECTED BY THE ENGINEER.
 

SEEDING, CLASS 2 (SPECIAL) =	0.3 ACRES
------------------------------	-----------
- 9) ONLY SUITABLE MATERIAL FROM EXCAVATIONS MAY BE USED IN THE EMBANKMENT. EXCESS AND UNSUITABLE MATERIAL SHALL BE DISPOSED OF BY THE CONTRACTOR. SAID DISPOSAL SHALL BE INCLUDED IN THE COST OF EARTH EXCAVATION. NO ADDITIONAL COMPENSATION WILL BE ALLOWED.
- 10) COMMITMENTS:
  - 1) AN UPDATED BAT ASSESSMENT SHALL BE CONDUCTED IF WORK COMMENCES ON EXISTING STRUCTURE AFTER SEPTEMBER 21, 2025.
  - 2) TREES THREE(3) INCHES OR GREATER IN DIAMETER SHALL NOT BE CLEARED BETWEEN APRIL 1 AND SEPTEMBER 30.

**HOT-MIX ASPHALT MIXTURE REQUIREMENTS**

LOCATIONS(S)	F.A.S. 1293 / C.H. 14	F.A.S. 1293 / C.H. 14
MIXTURE USE(S):	HOT-MIX ASPHALT BINDER COURSE	HOT-MIX ASPHALT SURFACE COURSE
PG:	PG 64-22	PG 64-22
DESIGN AIR VOIDS:	4% @ 50 Gyr.	4% @ 50 Gyr.
MIXTURE COMPOSITION: (MIXTURE GRADATION)	IL 19.0	IL 9.5
FRICTION AGGREGATE:	NONE	MIXTURE C
MIXTURE WEIGHT:	112 LBS / SY / INCH THICKNESS	112 LBS / SY / INCH THICKNESS
QUALITY MANAGEMENT PROGRAM	QC/QA	QC/QA
SUBLOT SIZE	NA	NA
DENSITY TEST METHOD	CORES/NUCLEAR	CORES/NUCLEAR
MATERIAL TRANSFER DEVICE (REQUIRED)	NO	NO

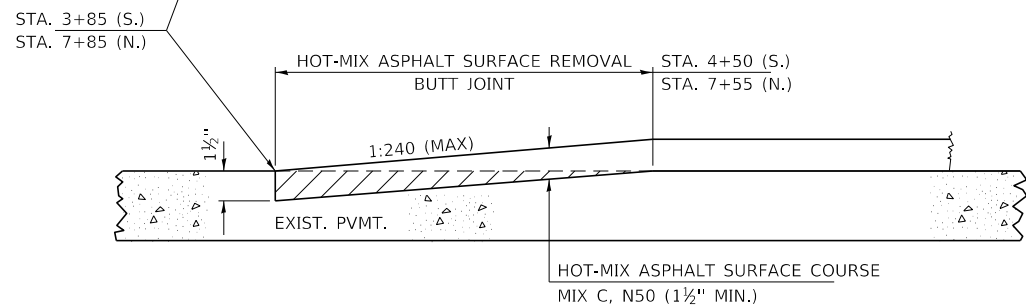
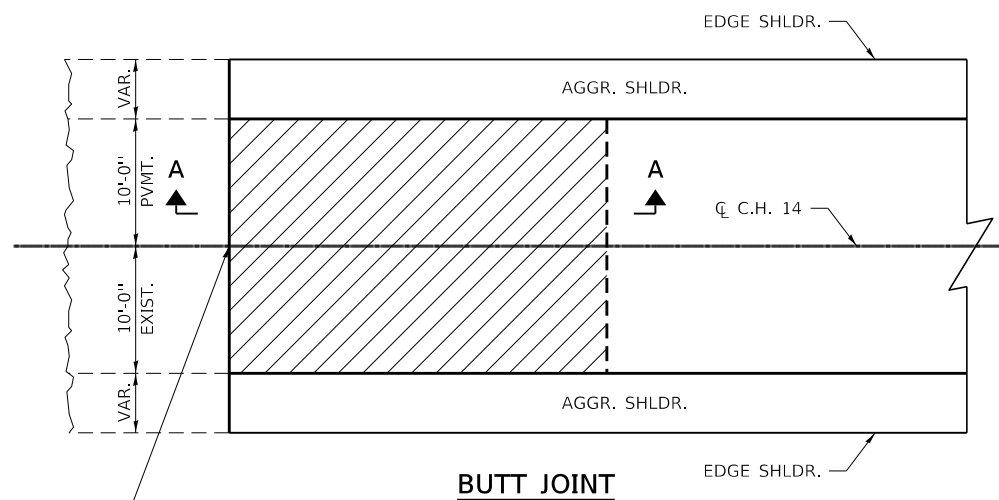
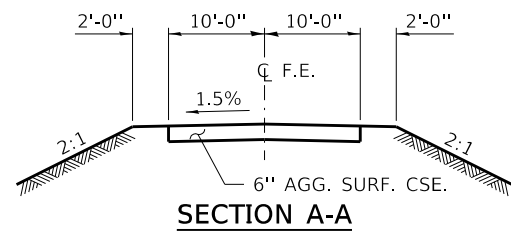
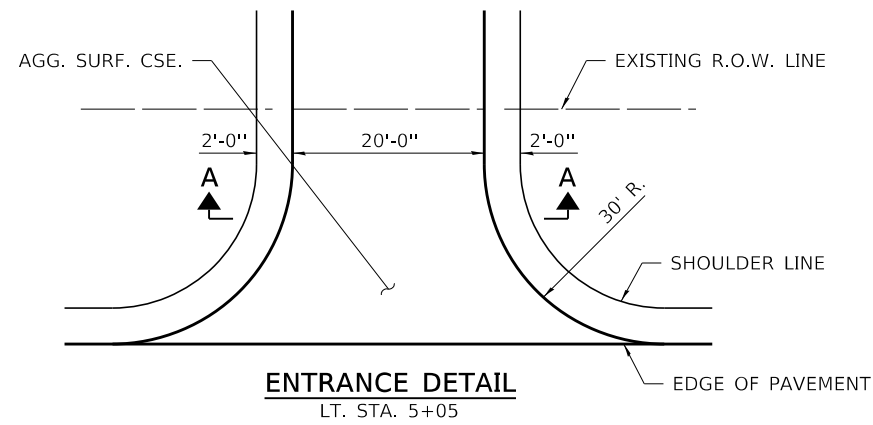
**GUARDRAIL SCHEDULE**

LOCATION	STEEL PLATE BEAM GUARDRAIL, TYPE A, 6 FOOT POSTS	TRAFFIC BARRIER TERMINAL, TYPE 6A	TRAFFIC BARRIER TERMINAL, TYPE 1 (SPECIAL) TANGENT	TERMINAL MARKER - DIRECT APPLIED	GUARDRAIL REFLECTORS, TYPE A
F.A.S. 1293 / C.H. 14	63000001	63100087	63100167	72501000	78200005
SEE SHEET 6 FOR LAYOUT	FOOT	EACH	EACH	EACH	EACH
RT. STA. 3+93.33 TO RT. STA. 6+39.76	37.5	1	1	2	4
LT. STA. 5+36.31 TO LT. STA. 7+82.68	37.5	1	1	2	4
<b>TOTAL</b>	<b>75</b>	<b>2</b>	<b>2</b>	<b>4</b>	<b>8</b>

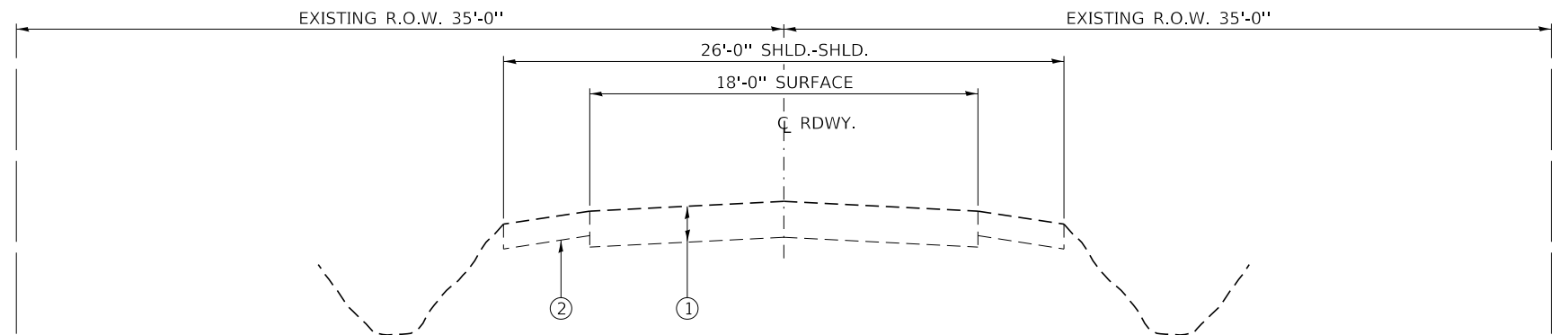
NOTE: SEE SHEET 6 FOR STATIONING AND LAYOUT

**ROADWAY SCHEDULE**

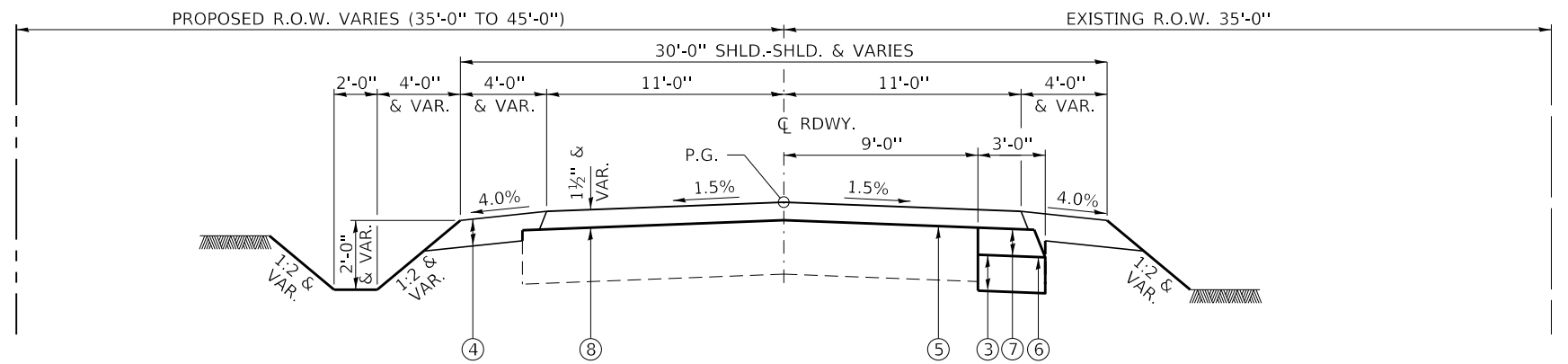
LOCATION	BASE COURSE WIDENING 8"	AGGREGATE SURFACE COURSE, TYPE A	BITUMINOUS MATERIALS (PRIME COAT)	BITUMINOUS MATERIALS (TACK COAT)	HOT-MIX ASPHALT SURFACE REMOVAL - BUTT JOINT	HOT-MIX ASPHALT BINDER COURSE, IL-19.0, N50	HOT-MIX ASPHALT SURFACE COURSE, IL-9.5, MIX "C", N50	AGGREGATE SHOULDERS, TYPE B
F.A.S. 1293 / C.H. 14	35650300	40200100	40600275	40600290	40600982	40603080	40604050	48101200
	SQ YD	TON	POUND	POUND	SQ YD	TON	TON	TON
STA. 3+85.00 TO STA. 5+26.21	47		106	81	159	17	35	57
STA. 5+26.81 TO STA. 6+49.81							36	
STA. 6+49.81 TO STA. 8+52.00	67		152	116	73	25	35	45
<b>ENTRANCES</b>		94						
<b>TOTAL</b>	<b>114</b>	<b>94</b>	<b>258</b>	<b>197</b>	<b>232</b>	<b>42</b>	<b>106</b>	<b>102</b>



**SECTION A-A**



**EXISTING TYPICAL CROSS SECTION**  
STA. 3+85 TO STA. 7+85



**PROPOSED TYPICAL CROSS SECTION**  
STA. 3+85 TO STA. 5+26.21  
STA. 6+49.81 TO STA. 7+85

SUGGESTED CUT SECTION  
CONSTRUCT AS SHOWN IN  
STATION CROSS SECTIONS

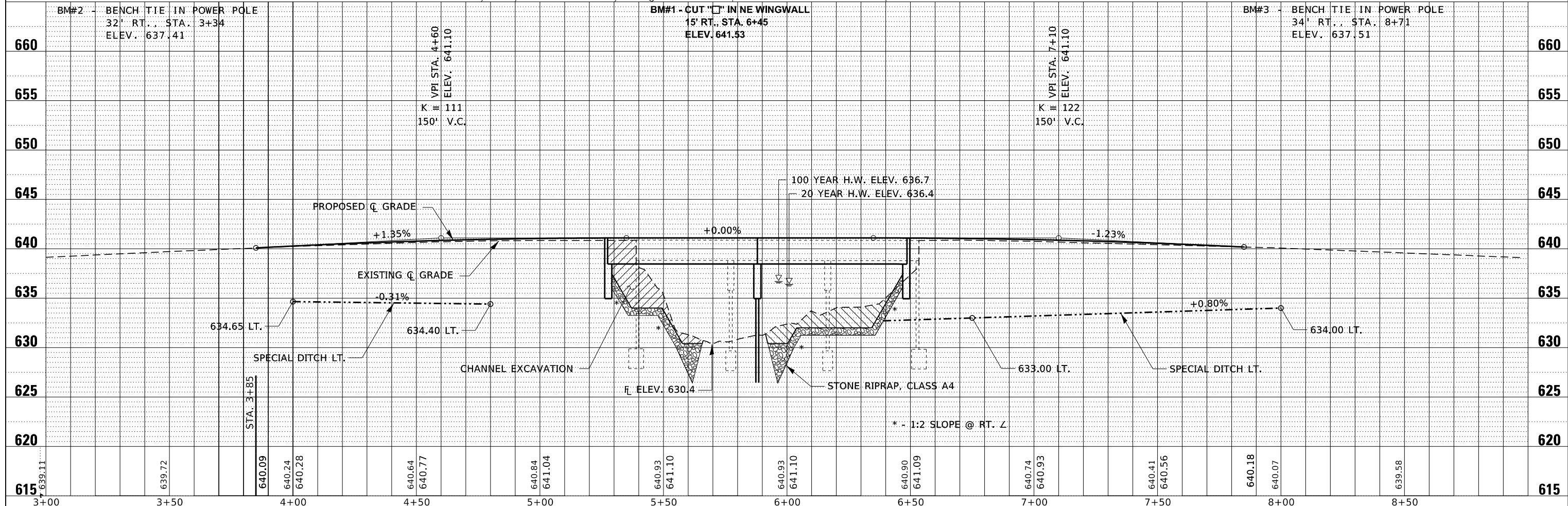
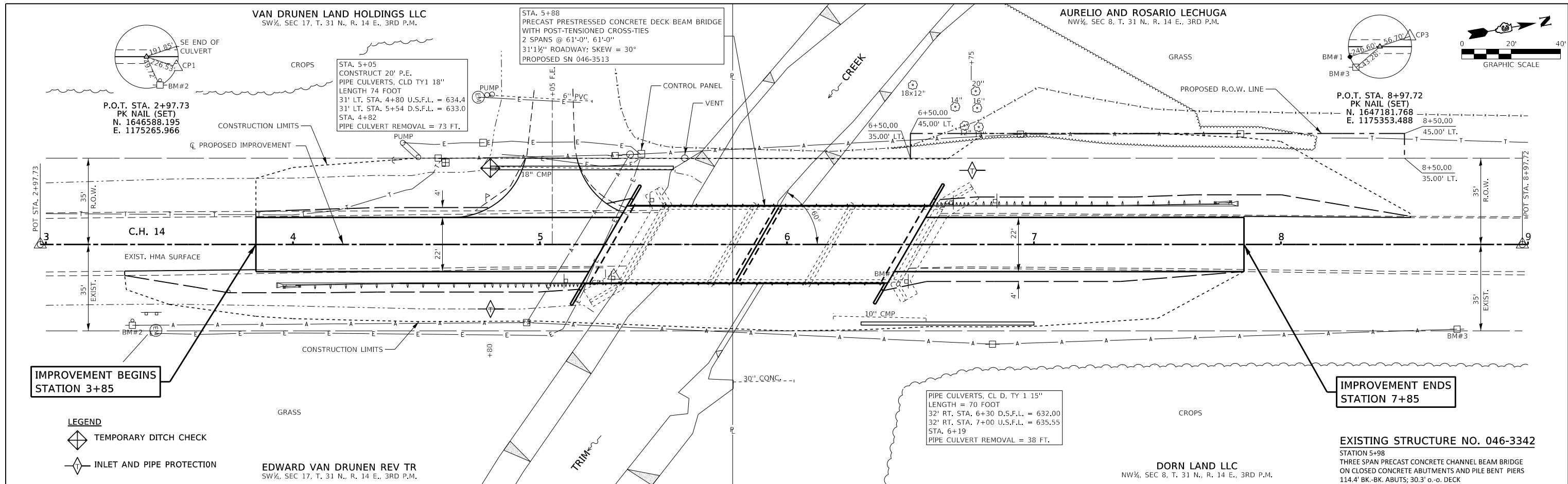
SUGGESTED FILL SECTION  
CONSTRUCT AS SHOWN IN  
STATION CROSS SECTIONS

**LEGEND**

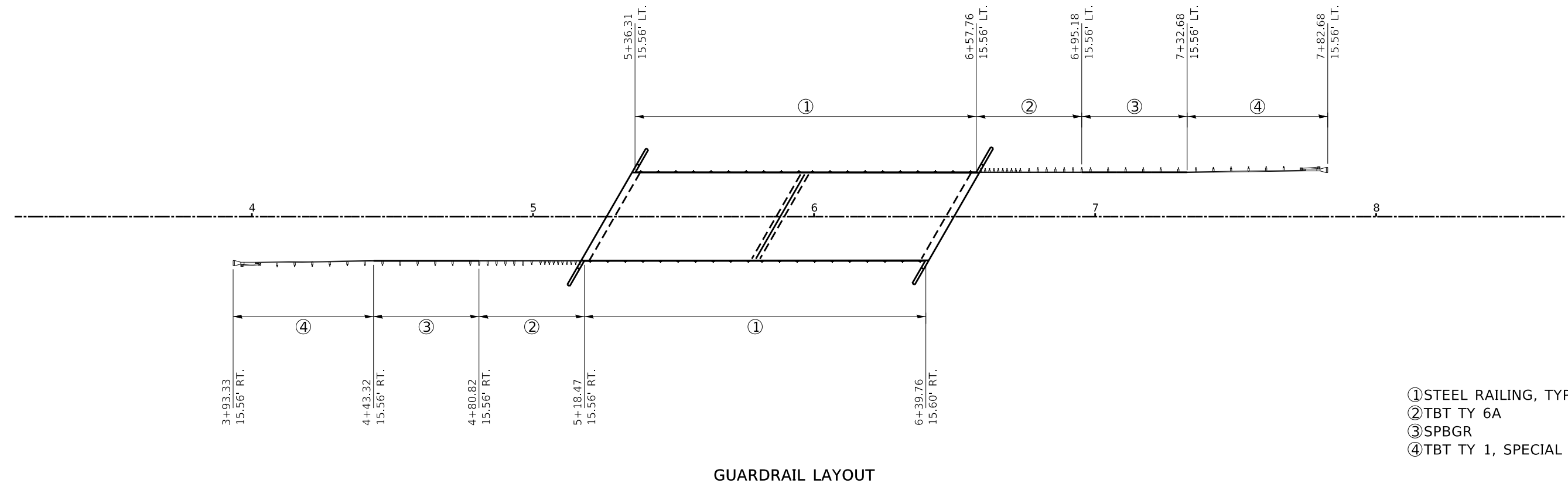
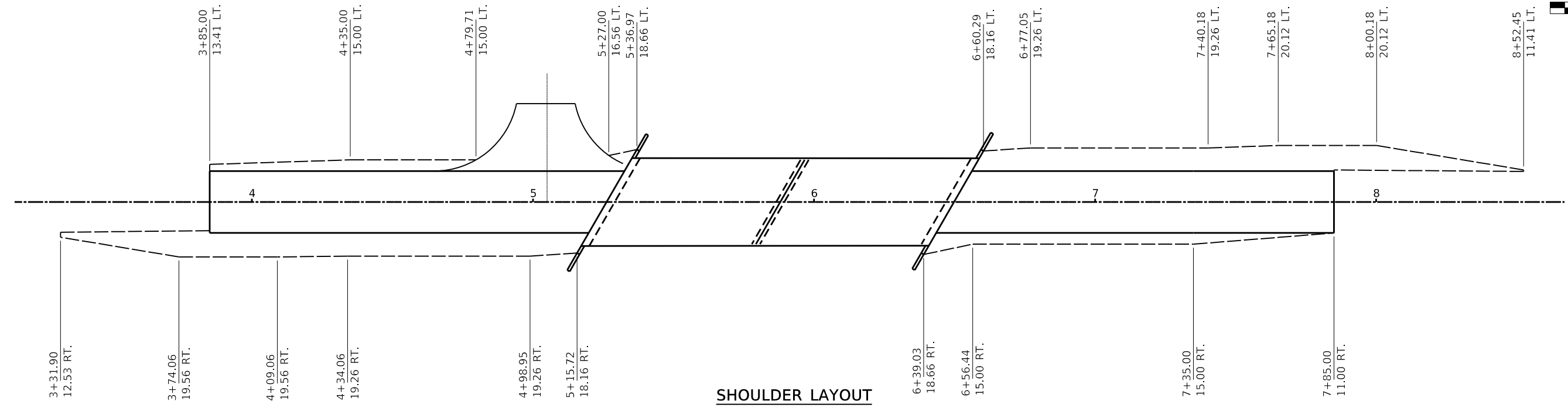
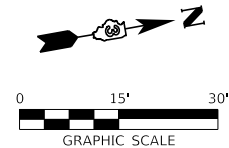
- ① EXISTING HMA SURFACE (4") ON AGGREGATE BASE (8")
- ② EXISTING AGGREGATE SHOULDERS
- ③ BASE COURSE WIDENING, 8"
- ④ AGGREGATE SHOULDERS, TYPE B (6")
- ⑤ BITUMINOUS MATERIALS (PRIME COAT)
- ⑥ BITUMINOUS MATERIALS (TACK COAT)
- ⑦ HMA BINDER COURSE, IL-19.0, N50 (2½" THICKNESS)
- ⑧ HMA SURFACE COURSE, IL-9.5, MIX "C", N50 (1½" MIN. & VARIES)

DATE	
BY	
REVIEWED	
PLANNED	
NOTED	
NO.	

DATE	
BY	
REVIEWED	
PLANNED	
NOTED	
NO.	



FILE NAME = 230505-eh-pnprf.dgn	USER NAME = rmosick	DESIGNED - J.W.F.	REVISIONS -	<b>STATE OF ILLINOIS</b> <b>KANKAKEE COUNTY HIGHWAY DEPARTMENT</b>	<b>PLAN &amp; PROFILE</b> SCALE: 5V:20H SHEET NO. 1 OF 1 SHEETS STA. 2+97.73 TO STA. 8+97.72	C.H.	SECTION	COUNTY	TOTAL SHEETS	SHEET NO.
HAMPTON, LENZINI AND RENWICK, INC.		DRAWN - T.W.K.	REVISIONS -			14	23-00306-00-BR	KANKAKEE	25	5
3085 STEVENSON DRIVE, SUITE 201 SPRINGFIELD, ILLINOIS 62703 ILLINOIS PROFESSIONAL DESIGN FIRM L.S./P.E./S.E. CORP. 184.000959		CHECKED - S.W.M.	REVISIONS -			VINCENNES TRAIL	CONTRACT NO. 87851			
		DATE - 5/8/2025	REVISIONS -			ILLINOIS FED. AID PROJECT 7M6S(350)				

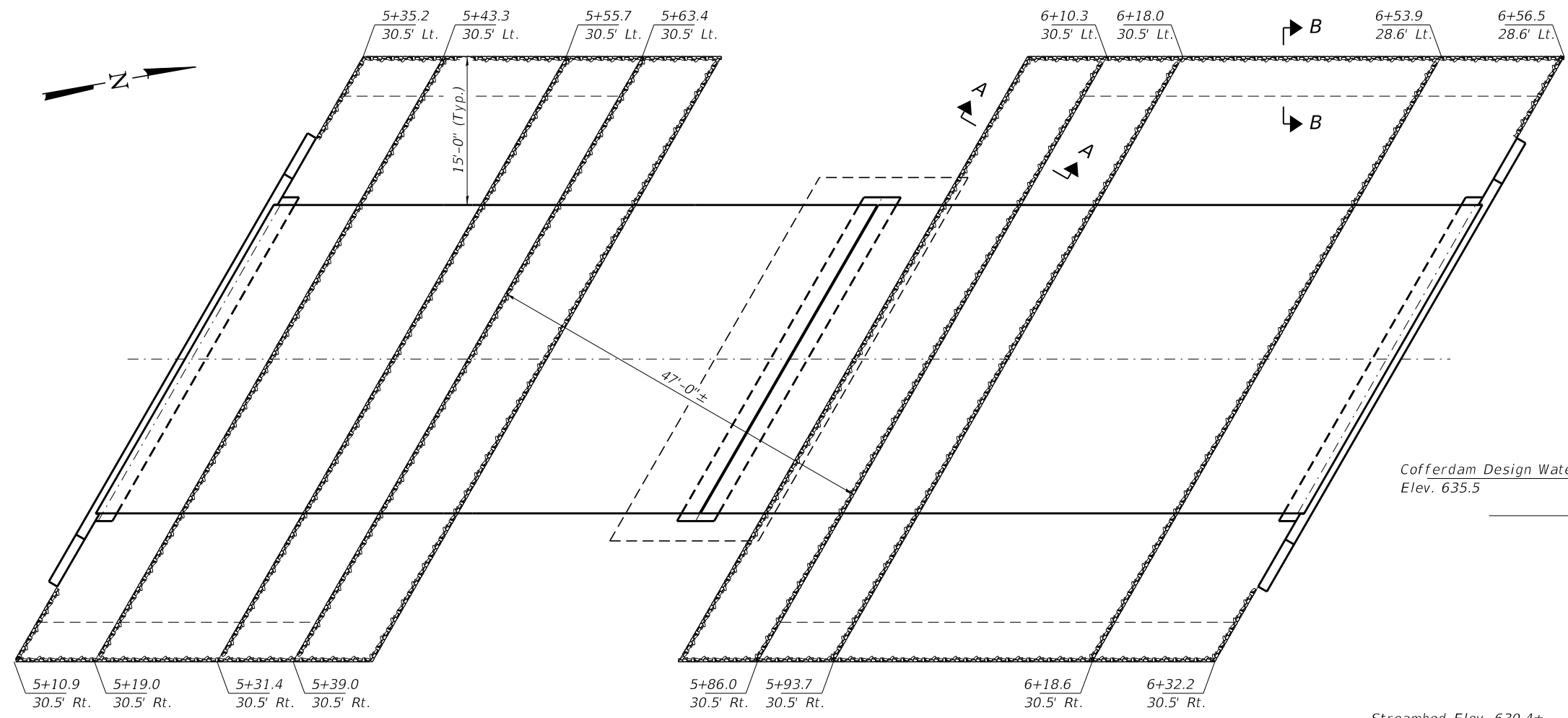


- ① STEEL RAILING, TYPE SMX
- ② TBT TY 6A
- ③ SPBGR
- ④ TBT TY 1, SPECIAL TANGENT

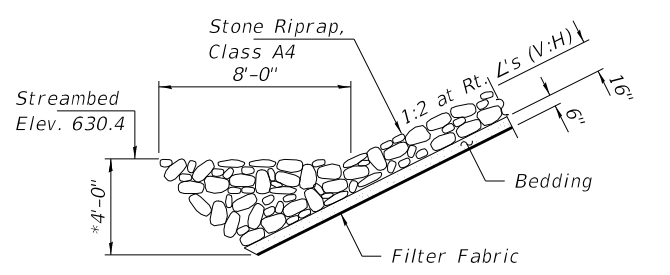
FILE NAME = 230505-shr-shoulder.dgn	USER NAME = rmosck	DESIGNED - J.W.F.	REVISED -	<b>STATE OF ILLINOIS KANKAKEE COUNTY HIGHWAY DEPARTMENT</b>	<b>SHOULDER AND GUARDRAIL LAYOUT</b>	C.H.	SECTION	COUNTY	TOTAL SHEETS	SHEET NO.
<b>HAMPTON, LENZINI AND RENWICK, INC.</b> 3065 STEVENSON DRIVE, SUITE 201 SPRINGFIELD, ILLINOIS 62703 ILLINOIS PROFESSIONAL DESIGN FIRM LS / PE / SE CORP. 184.000959	PLOT SCALE = \$SCALE\$	DRAWN - D.M.F.	REVISED -			14	23-00306-00-BR	KANKAKEE	25	6
PLOT DATE = 5/8/2025	CHECKED - S.W.M.	REVISIED -	REVISIED -			CONTRACT NO. 87851				
DATE - 05/07/2025	REVISIED -	REVISIED -	REVISIED -			C-93-005-25	ILLINOIS	PROJECT NO. 7M6S(350)		

SCALE: 1" = 30' SHEET NO. 1 OF 1 SHEETS

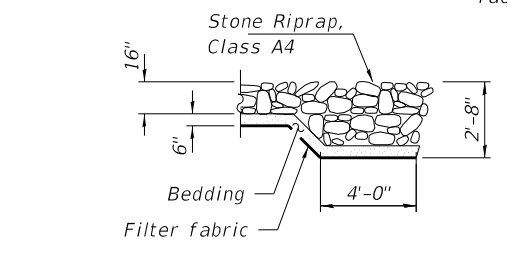




**RIPRAP LAYOUT**

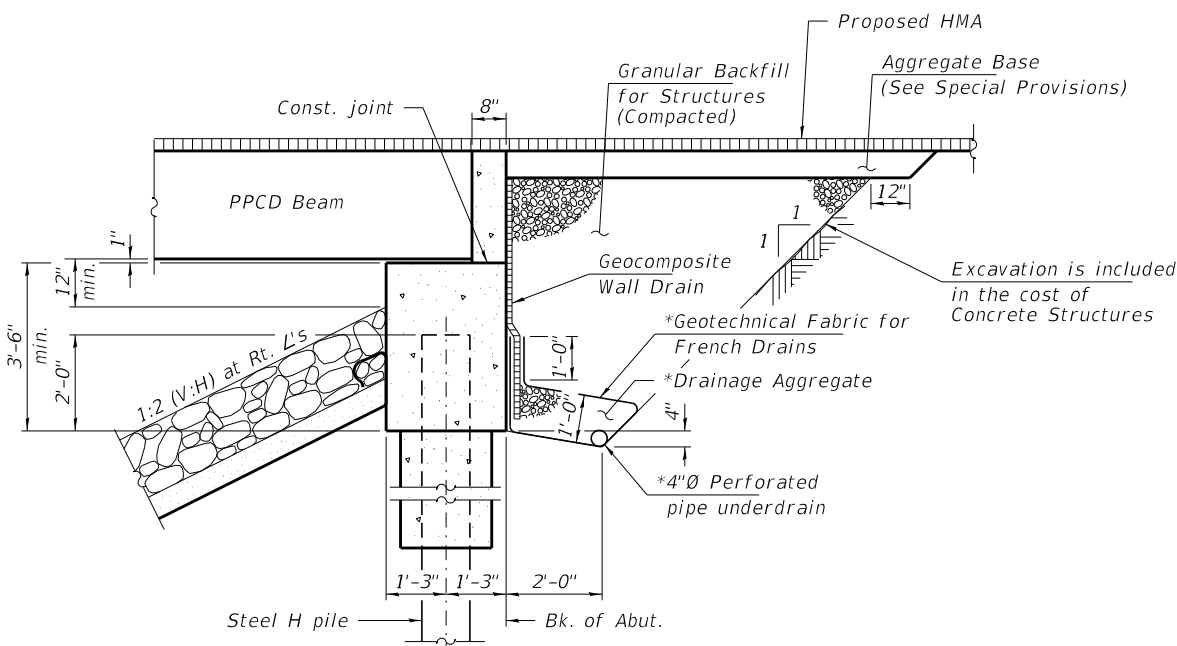


**SECTION A-A**



**SECTION B-B**

Note:  
All drainage system components shall extend to 2'-0" from the end of each wingwall except an outlet pipe shall extend until intersecting with the side slopes. The pipes shall drain into concrete headwalls. (See Article 601.05 of the Standard Specifications and Highway Standard 601101).



**SECTION THRU ABUTMENT**

\*Included in the cost of Pipe Underdrains for Structures 4". (See Special Provisions)

**GENERAL NOTES**

Layout of the slope protection system may be varied to suit ground conditions in the field as directed by the Engineer.

The Contractor shall drive test piles to 110% of the nominal required bearing specified in production locations at West Abutment and Pier 1 or approved by the Engineer before ordering the remainder of piles.

Reinforcement bars shall conform to the requirements of ASTM A 706 Gr 60. See Special Provisions.

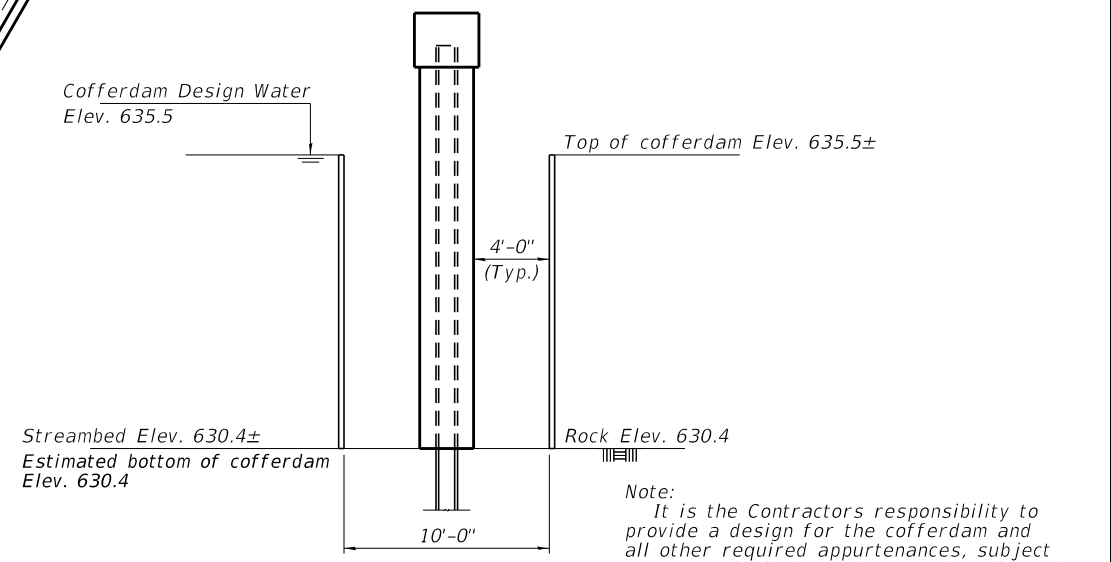
All bars to be epoxy coated.

Excavation required to construct the Abutments shall be included in the cost of Concrete Structures. Excavation required to construct cofferdams shall be included in the cost of Concrete Encasement. No additional compensation will be allowed for Structure Excavation or Cofferdam Excavation.

All proposed construction activities shall be in accordance with Nationwide Permit number 14 of the Department of the Army authorized under Section 404 of the Clean Water Act.

The IEPA has issued Section 401 Water Quality Certification for this activity. See Special Provisions for conditions.

Protective Coat shall be applied to the top and front face of wingwalls.

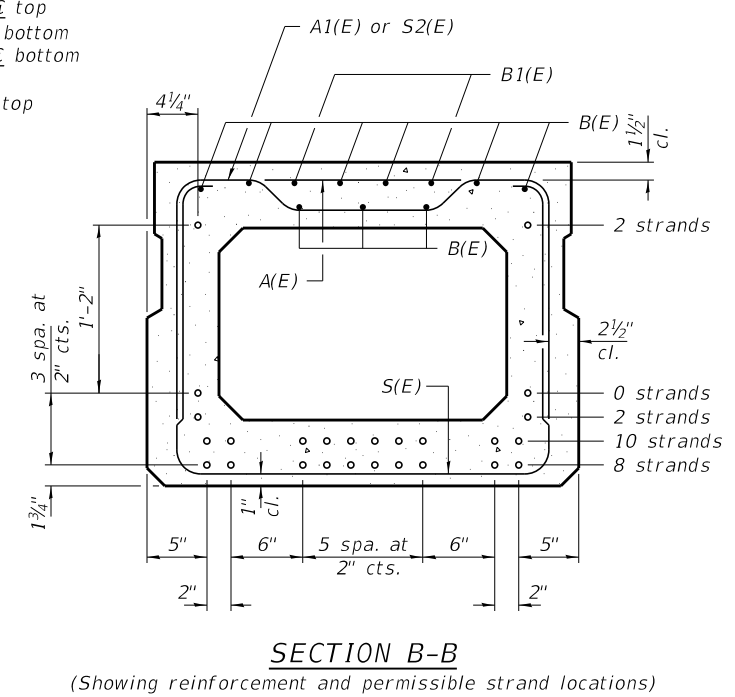
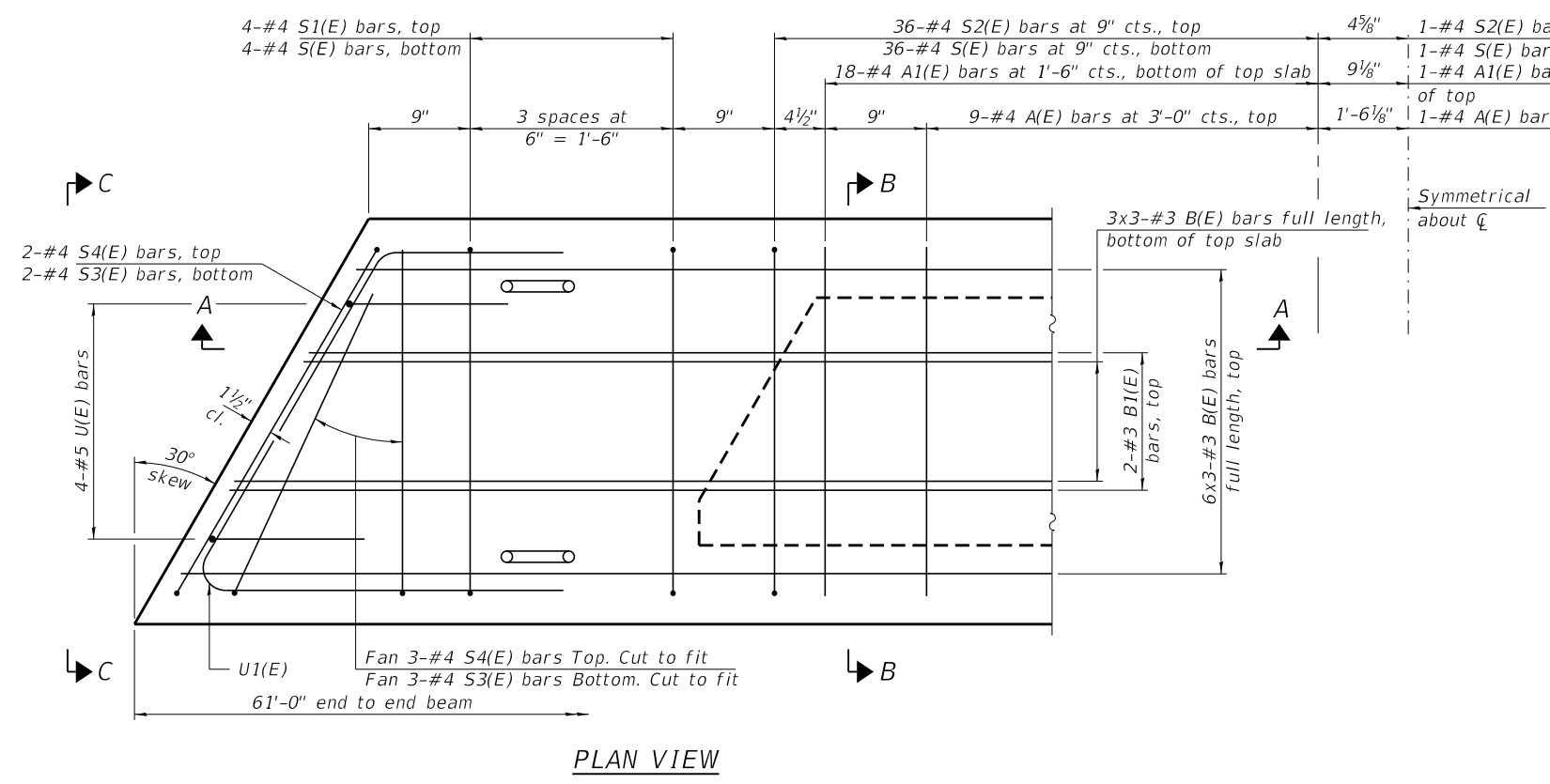
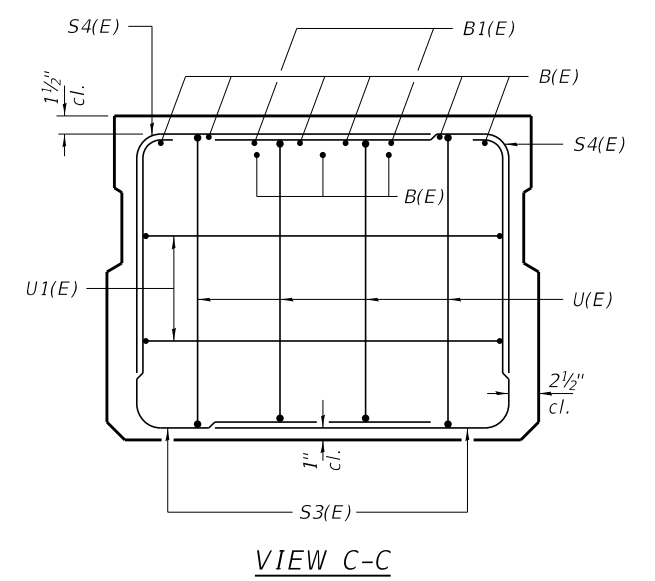
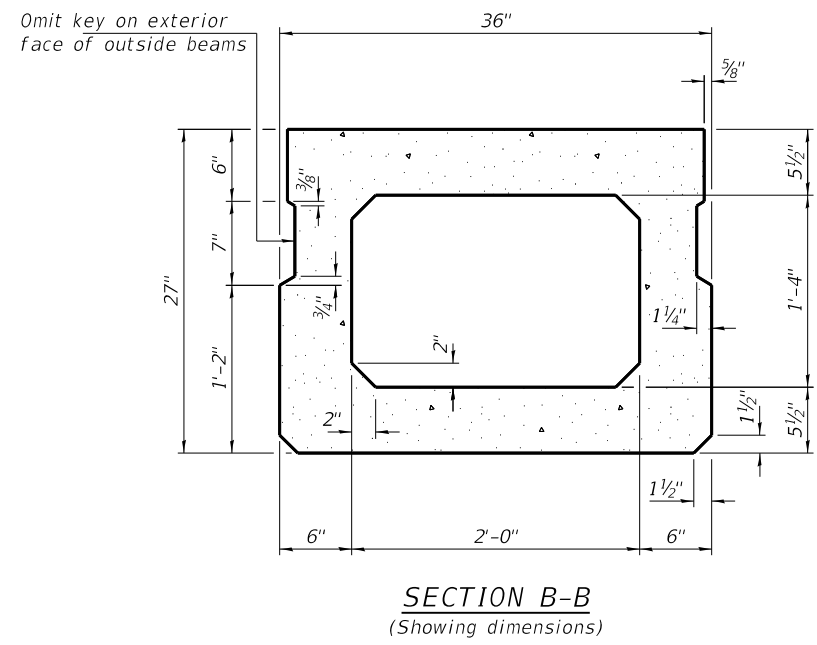
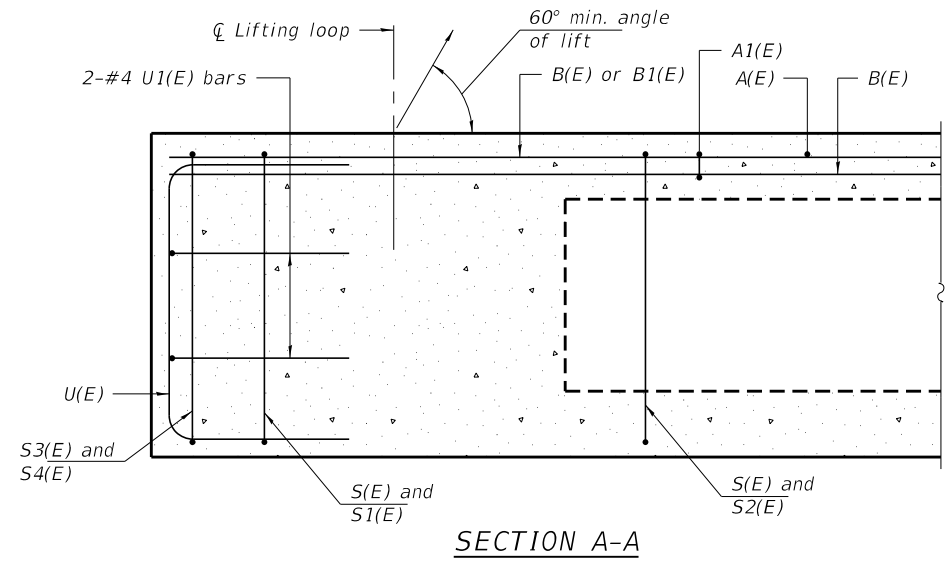


**COFFERDAM DETAIL**

Note:  
It is the Contractors responsibility to provide a design for the cofferdam and all other required appurtenances, subject to approval of the Engineer. Plan dimensions of cofferdam are 10'-0" x 42'-6".

**TOTAL BILL OF MATERIAL**

ITEM	UNIT	SUPER	SUB	TOTAL
Channel Excavation	Cu. Yd.			280
Stone Riprap, Class A4	Sq. Yd.			602
Filter Fabric	Sq. Yd.			602
Hot-Mix Asphalt Surface Course, IL-9.5, Mix "C" N50	Ton			36
Removal of Existing Structures	Each			1
Cofferdam (Type 1) (Location-1)	Each		1	1
Concrete Structures	Cu. Yd.		51.2	51.2
Concrete Encasement	Cu. Yd.		7.1	7.1
Protective Coat	Sq. Yd.		22	22
Precast Prestressed Conc. Deck Beams (27" Depth)	Sq. Ft.	3,660		3,660
Reinforcement Bars, Epoxy Coated	Pound		5,690	5,690
Steel Railing, Type SMX	Foot	244		244
Furnishing Steel Piles HP10x42	Foot		120	120
Furnishing Steel Piles HP12x53	Foot		60	60
Drilling and Setting Piles (In Rock)	Cu. Ft.		217	217
Name Plates	Each		1	1
Waterproofing Membrane System	Sq. Yd.	427		427
P.C. Mortar Fairing Course	Foot	275		275
Granular Backfill for Structures	Cu. Yd.		97	97
Geocomposite Wall Drain	Sq. Yd.		57	57
Concrete Headwalls for Pipe Drains	Each		4	4
Pipe Underdrains for Structures 4"	Foot		142	142



**BAR LIST**  
ONE BEAM ONLY  
(For information only)

Bar	No.	Size	Length	Shape
A(E)	19	#4	2'-7"	—
A1(E)	37	#4	2'-10"	—
B(E)	27	#3	21'-3"	—
B1(E)	4	#3	10'-0"	—
S(E)	81	#4	7'-5"	⌊
S1(E)	8	#4	5'-11"	⌊
S2(E)	73	#4	6'-2"	⌊
S3(E)	10	#4	4'-11"	⌊
S4(E)	10	#4	4'-2"	⌊
U(E)	8	#5	4'-6"	⌊
U1(E)	4	#4	6'-10"	⌊

Note:  
Place the number of strands specified in each row symmetrically about the centerline of beam in the permissible strand locations shown.

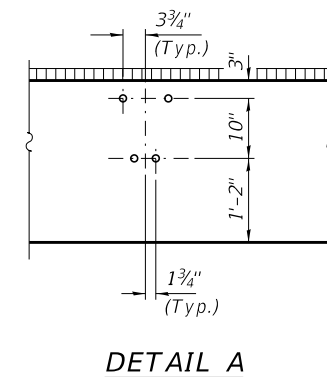
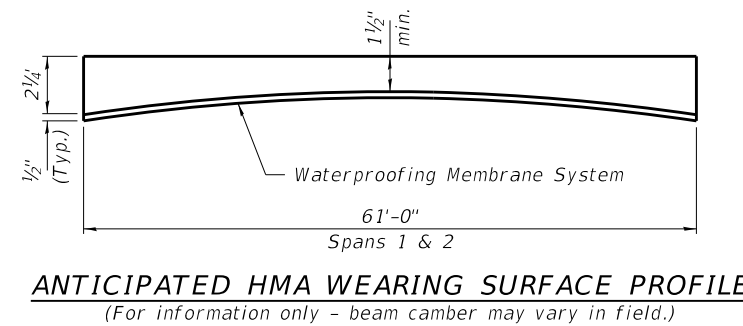
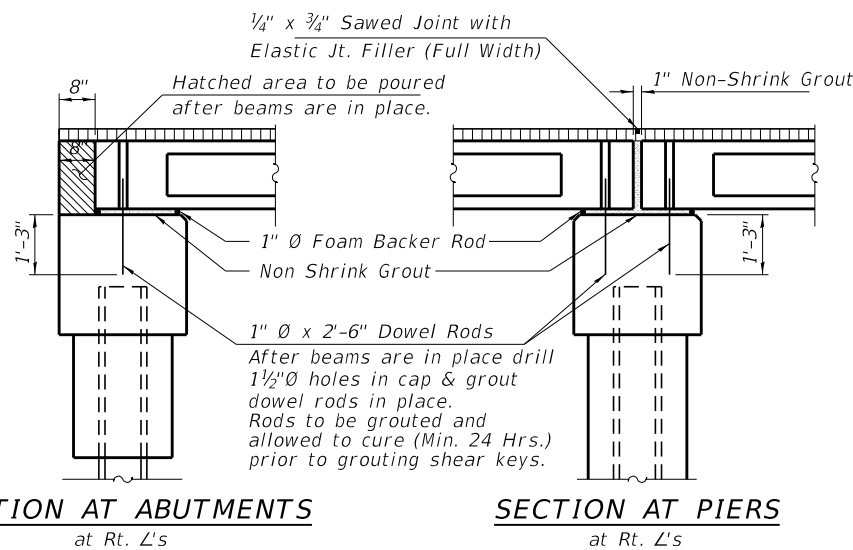
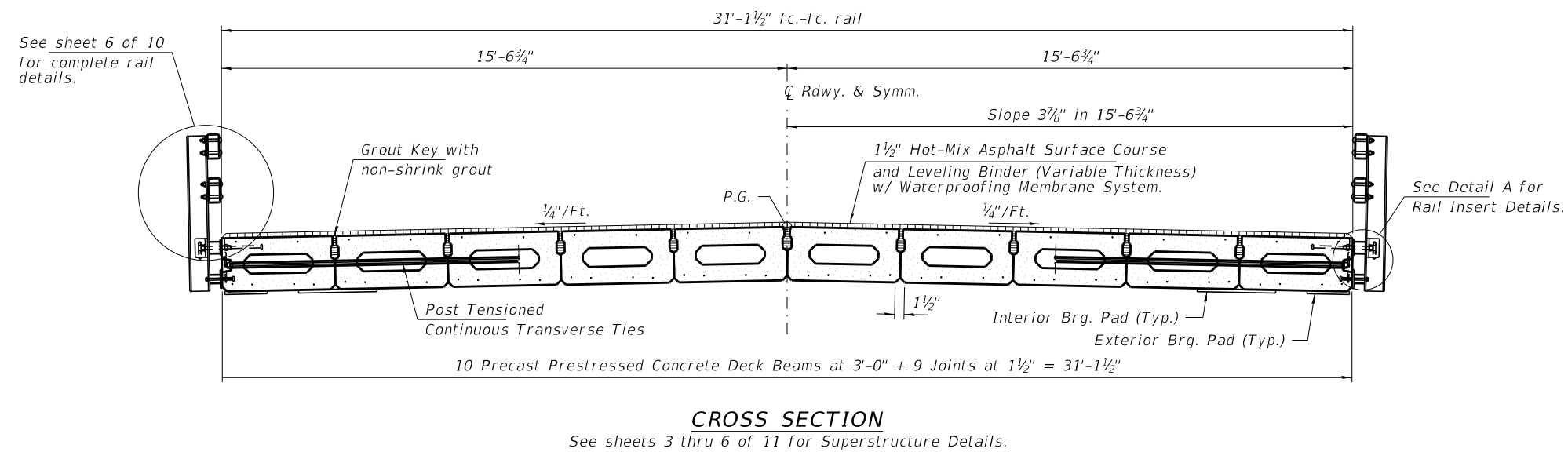
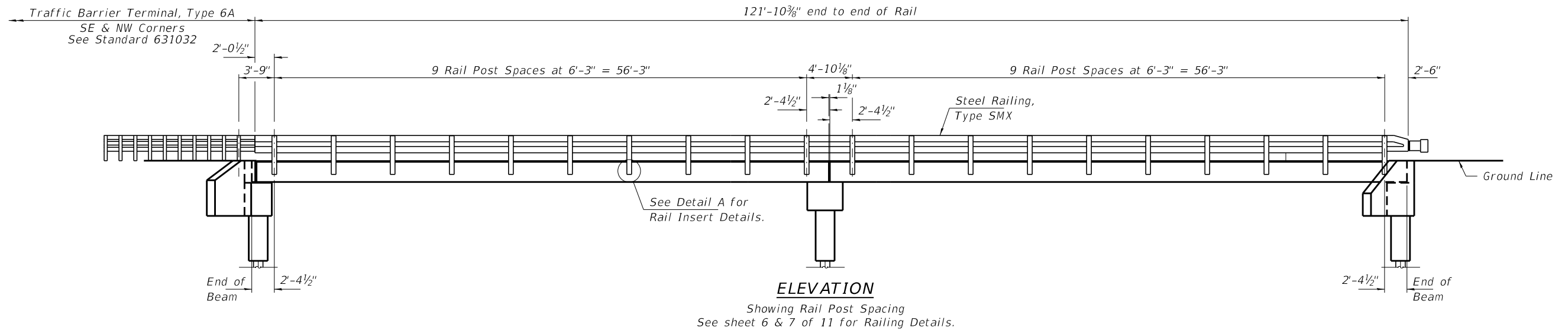
Note:  
Spacing of S(E) and S2(E) bars may be adjusted up to 4" in the immediate area of the transverse tie diaphragms to miss the block outs for the transverse ties.  
Bars indicated thus 6x3-#3 etc. indicates 6 lines of bars with 3 lengths per line

**MINIMUM BAR LAP**  
#3 bar = 1'-6"

PD-2736-L 5-15-2023

FILE NAME = 230505-shi-bridge.dgn	USER NAME = rthosck	DESIGNED - J.W.F.	REVISED -	<b>STATE OF ILLINOIS KANKAKEE COUNTY HIGHWAY DEPARTMENT</b>	<b>27" x 36" PPC DECK BEAM - SPANS 1 &amp; 2 STRUCTURE NO. 046-3513</b>	C.H.	SECTION	COUNTY	TOTAL SHEETS	SHEET NO.
HAMPTON, LENZINI AND RENWICK, INC. 3035 STEVENSON DRIVE, SUITE 201 SPRINGFIELD, ILLINOIS 62703 ILLINOIS PROFESSIONAL DESIGN FIRM L.S. / P.E. / S.E. CORP. 184.000959	PLOT SCALE = \$SCALE\$	CHECKED - S.W.M.	REVISED -			14	23-00306-00-BR	KANKAKEE	25	9
PLOT DATE = 5/8/2025	CHECKED - S.W.M.	DRAWN - D.M.F.	REVISED -			CONTRACT NO. 87851				
		CHECKED - S.W.M.	REVISED -			SHEET NO. 3 OF 11 SHEETS				

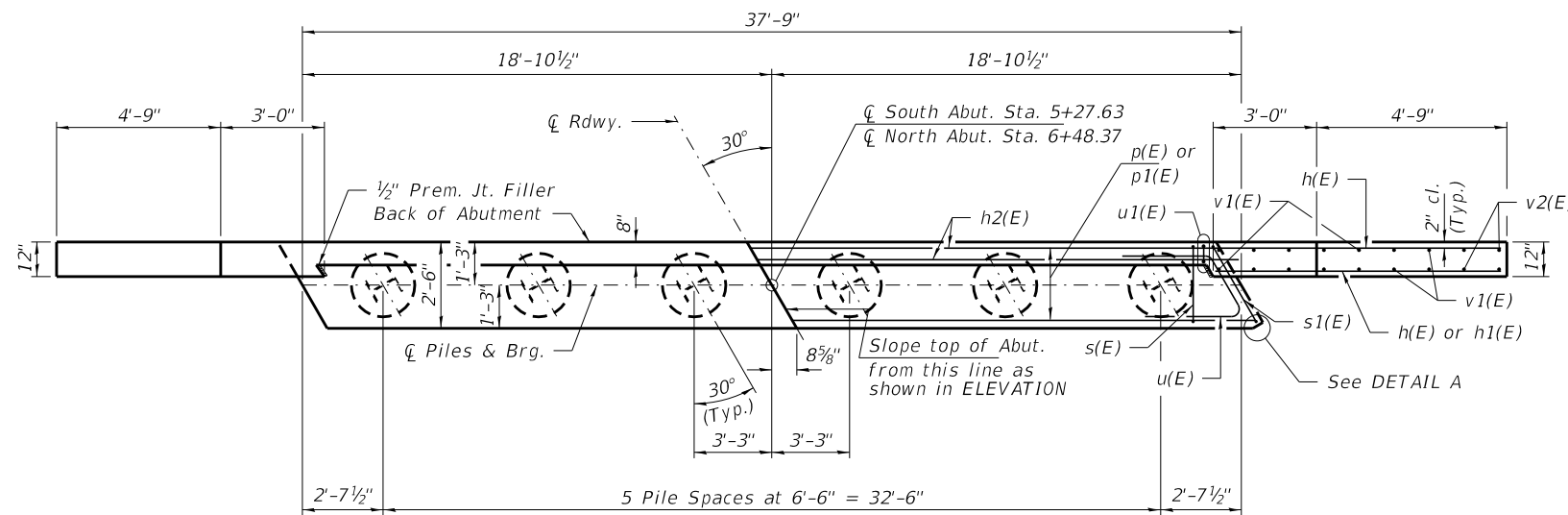




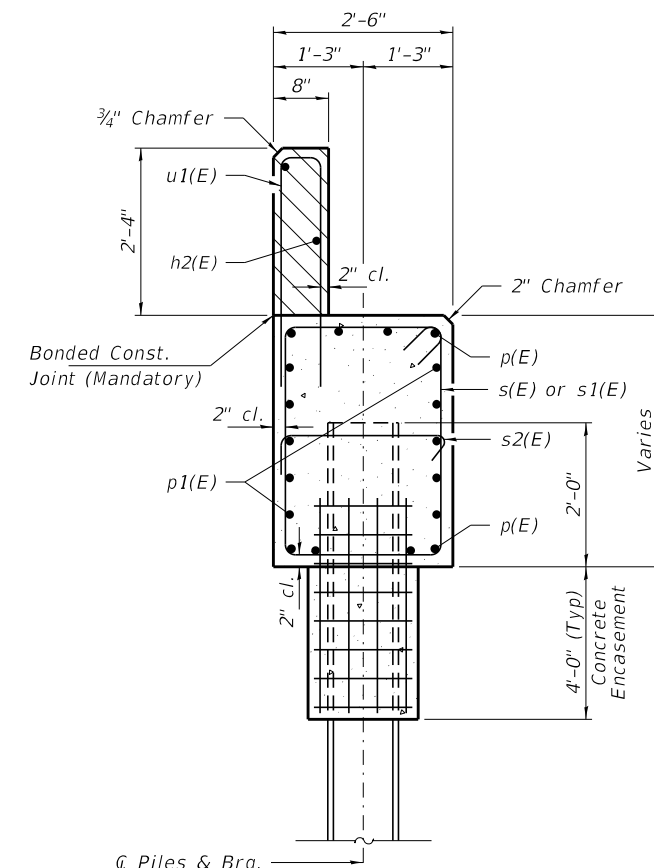
FILE NAME = 230505-shi-bridge.dgn	USER NAME = rthosick	DESIGNED - J.W.F.	REVISED -	<b>STATE OF ILLINOIS KANKAKEE COUNTY HIGHWAY DEPARTMENT</b>	<b>SUPERSTRUCTURE DETAILS STRUCTURE NO. 046-3513</b>	C.H.	SECTION	COUNTY	TOTAL SHEETS	SHEET NO.
<b>HAMPTON, LENZINI AND RENWICK, INC.</b> 3035 STEVENSON DRIVE, SUITE 201 SPRINGFIELD, ILLINOIS 62703 ILLINOIS PROFESSIONAL DESIGN FIRM LS / PE / SE CORP. 184.000959	PLOT SCALE = \$SCALE\$	CHECKED - S.W.M.	REVISED -			14	23-00306-00-BR	KANKAKEE	25	11
PLOT DATE = 5/8/2025		DRAWN - D.M.F.	REVISED -			CONTRACT NO. 87851				
		CHECKED - S.W.M.	REVISED -			SHEET NO. 5 OF 11 SHEETS				
						C-93-005-25	ILLINOIS	PROJECT NO. 7M6S(350)		







**PLAN**

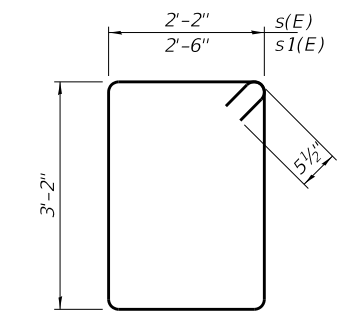


**SECTION A-A**

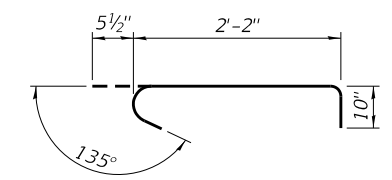
(Dimensions are at Rt. L's)

Hatched area to be poured after beams are in place.

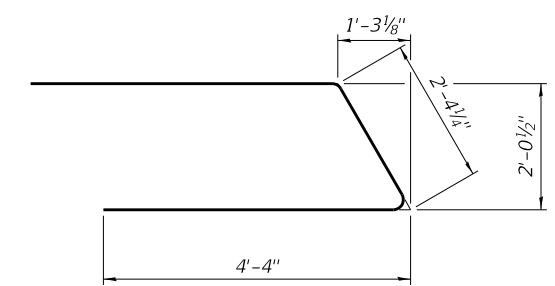
Cast top of wingwall flush with exterior beam face after beams have been erected.



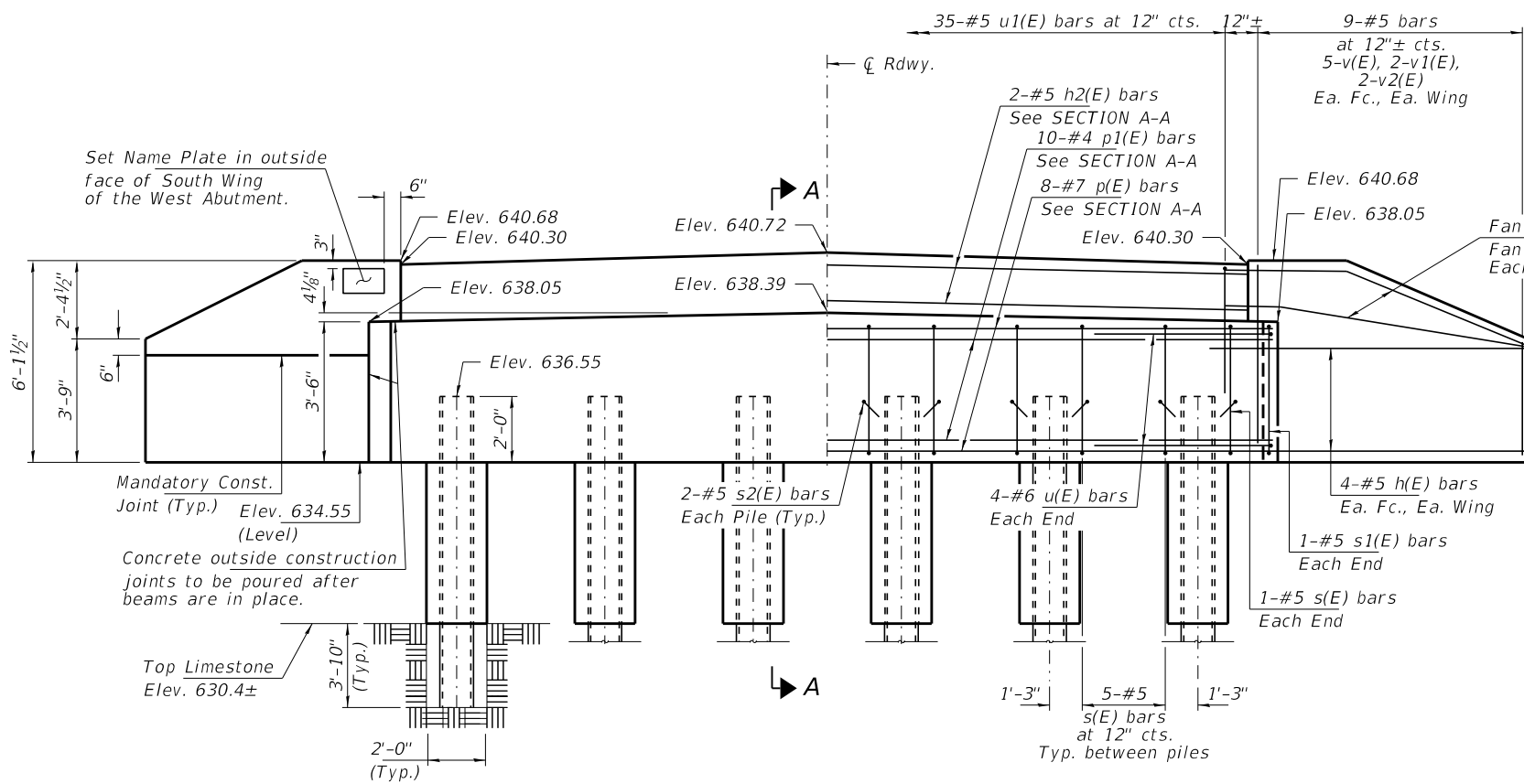
**BARS s(E) & s1(E)**



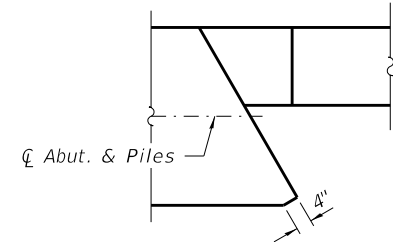
**BAR s2(E)**



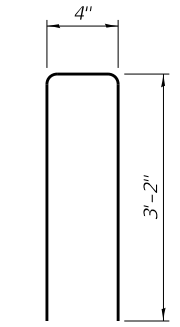
**BAR u(E)**



**ELEVATION**



**DETAIL A**



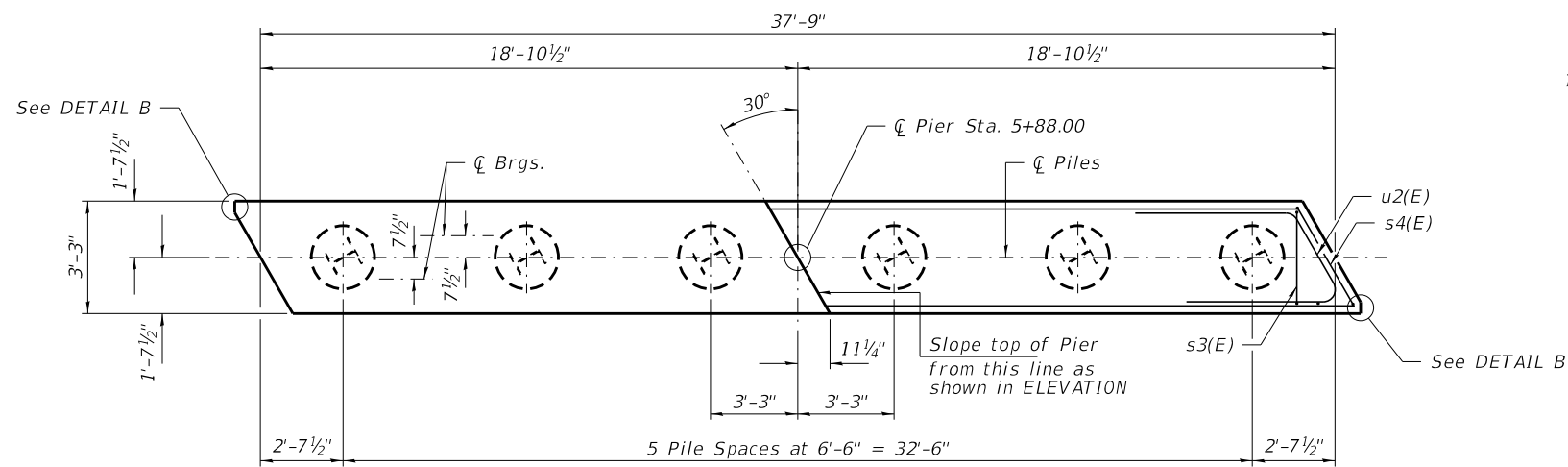
**BAR u1(E)**

**BILL OF MATERIAL - 2 ABUTS.**

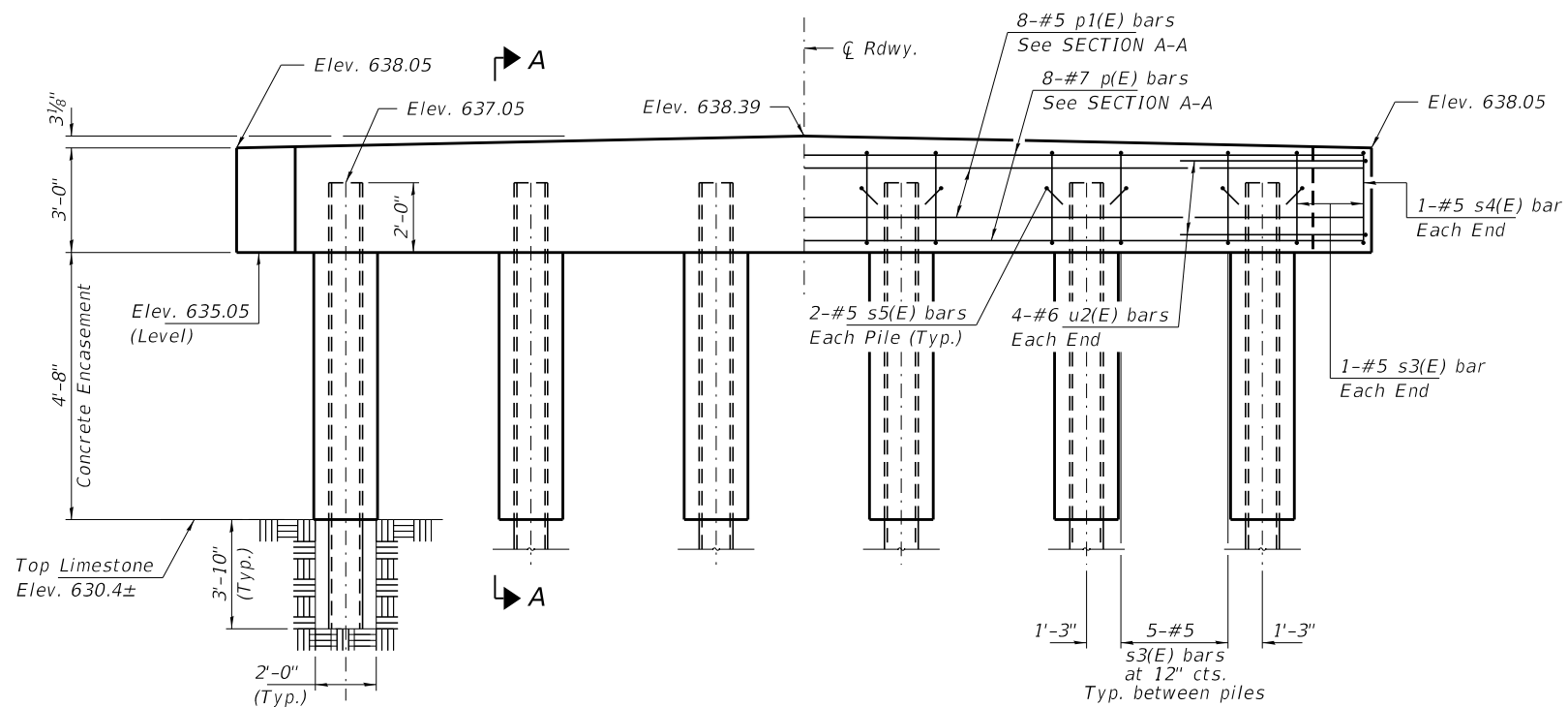
BAR	NO.	SIZE	LENGTH	SHAPE
h(E)	40	#5	9'-0"	=====
h1(E)	8	#5	7'-6"	=====
h2(E)	4	#5	37'-5"	=====
p(E)	16	#7	37'-5"	=====
p1(E)	20	#4	37'-5"	=====
s(E)	54	#5	11'-7"	□
s1(E)	4	#5	12'-3"	□
s2(E)	24	#5	3'-6"	U
u(E)	16	#6	11'-1"	U
u1(E)	68	#5	6'-8"	U
v(E)	40	#5	5'-4"	=====
v1(E)	16	#5	4'-4"	=====
v2(E)	16	#5	3'-5"	=====
Protective Coat			Sq. Yd.	22
Concrete Structures			Cu. Yd.	36.8
Concrete Encasement			Cu. Yd.	4.0
Reinf. Bars, Epoxy Coated			Pound	4,200
Furnishing Steel Piles HP10x42			Foot	120
Drilling & Setting Piles (In Rock)			Cu. Ft.	144
Name Plates			Each	1

Notes:  
 For details of piles see sheet No. 10 of 11 for details of concrete encasement reinforcement, see sheet No. 10 of 11.  
 All edges shall have standard 3/4" chamfer.  
 The cost of Structure Excavation shall be included in the cost of Concrete Structures.  
 Protective Coat shall be applied to the top and front face of wingwalls.

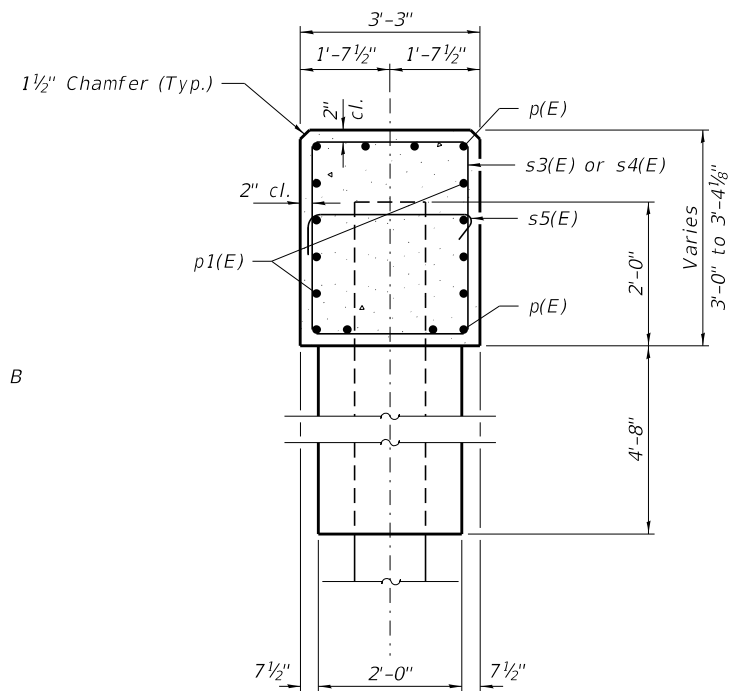
**PILE DATA**  
 Type: Steel HP10x42  
 Nominal Required Bearing: 335 Kips/Pile  
 Factored Resistance Available: 184 Kips/Pile  
 Est. Length: 10 Ft./Pile  
 No. Production Piles: 12  
 No. Test Piles: 0



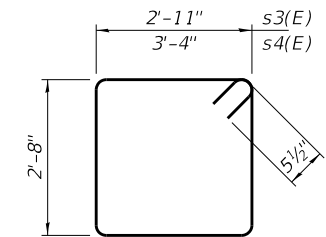
PLAN



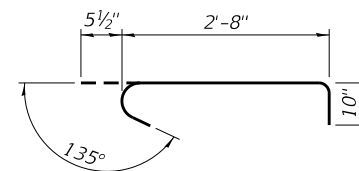
ELEVATION  
(Looking North)



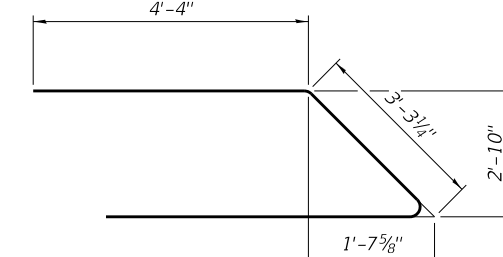
SECTION A-A



BAR s3(E) or s4(E)



BAR s5(E)

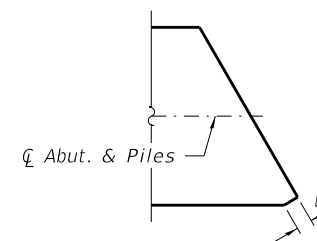


BAR u2(E)

BILL OF MATERIAL - PIER

BAR	NO.	SIZE	LENGTH	SHAPE
p(E)	8	#7	37'-5"	—
p1(E)	8	#5	37'-5"	—
s3(E)	27	#5	12'-1"	□
s4(E)	2	#5	12'-11"	□
s5(E)	12	#5	4'-0"	┌
u2(E)	8	#6	12'-0"	└
Cofferdam (Type 1) (Location-1)			Each	1
Concrete Structures			Cu. Yd.	14.4
Concrete Encasement			Cu. Yd.	3.1
Reinf. Bars, Epoxy Coated			Pound	1,490
Furnishing Steel Piles HP12x53			Foot	60
Drilling & Setting Piles (In Rock)			Cu. Ft.	73

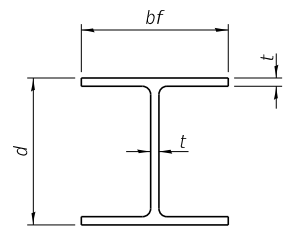
Notes:  
 For details of piles see sheet No. 10 of 11 for details of concrete encasement reinforcement, see sheet No. 10 of 11.  
 If a portion of the pier encasement is underwater, concrete shall be tremied under water into forms according to Article 503.08 of the Standard Specifications. Concrete shall be tremied to an Elevation 1'-0" above the water level at the time of construction.  
 Cofferdam Excavation shall be included in the cost of Concrete Encasement.  
 All edges shall have standard 3/4" chamfer.



DETAIL B

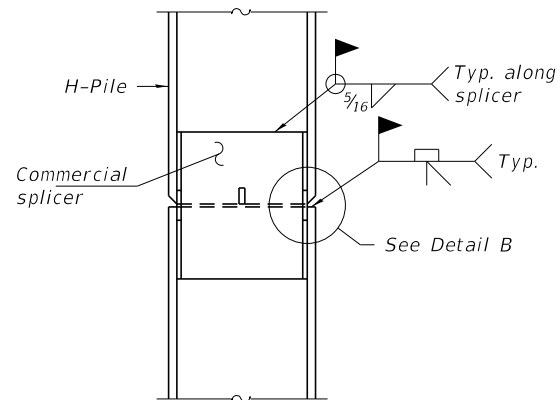
PILE DATA

Type: Steel HP12x53  
 Nominal Required Bearing: 419 Kips/Pile  
 Factored Resistance Available: 230 Kips/Pile  
 Est. Length: 10 Ft./Pile  
 No. Production Piles: 6  
 No. Test Piles: 0

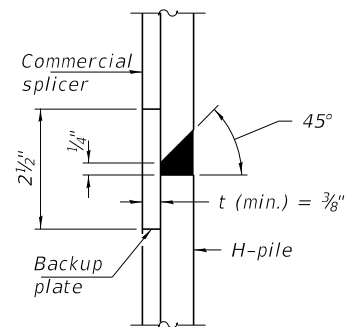


**STEEL PILE TABLE**

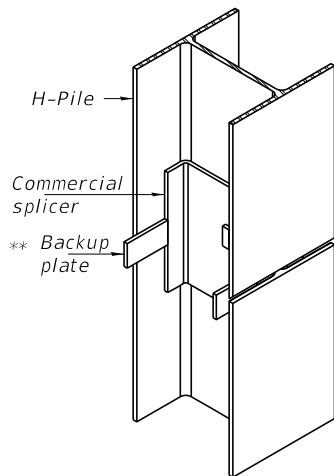
Designation	Depth d	Flange width bf	Web and Flange thickness t	Encasement diameter A
HP 18x181	18"	18"	1"	36"
x157	17 3/4"	17 7/8"	7/8"	36"
x135	17 1/2"	17 3/4"	3/4"	36"
HP 16x183	16 1/2"	16 1/2"	1 1/8"	36"
x162	16 1/4"	16 1/8"	1"	36"
x141	16"	16"	7/8"	36"
x121	15 3/4"	15 7/8"	3/4"	36"
HP 14x117	14 1/4"	14 7/8"	1 3/16"	30"
x102	14"	14 3/4"	1 1/16"	30"
x89	13 7/8"	14 3/4"	5/8"	30"
x73	13 5/8"	14 3/8"	1/2"	30"
HP 12x84	12 1/4"	12 1/4"	1 1/16"	24"
x74	12 1/8"	12 1/4"	5/8"	24"
x63	12"	12 1/8"	1/2"	24"
x53	11 3/4"	12"	7/16"	24"
HP 10x57	10"	10 1/4"	9/16"	24"
x42	9 3/4"	10 1/8"	7/16"	24"
HP 8x36	8"	8 1/8"	7/16"	18"



**ELEVATION**

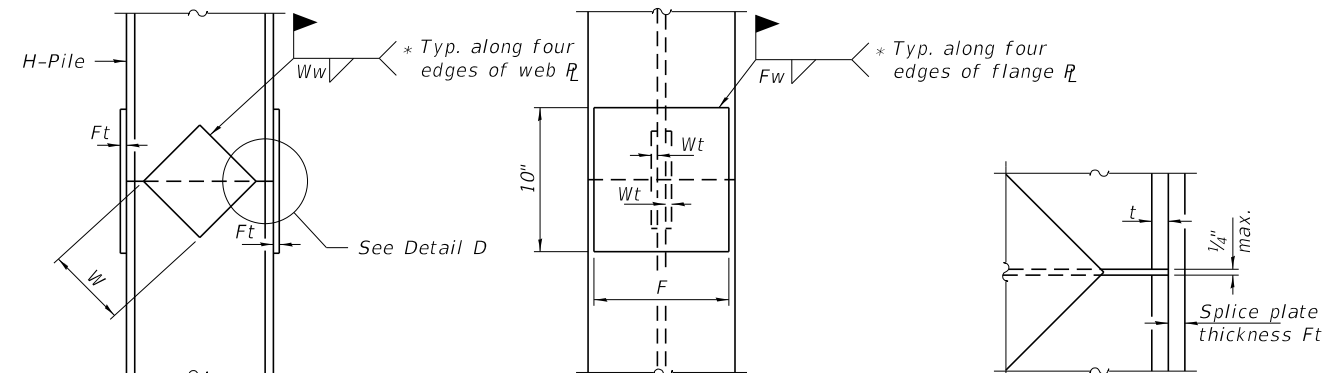


**DETAIL "B"**



**ISOMETRIC VIEW**

**WELDED COMMERCIAL SPLICE**



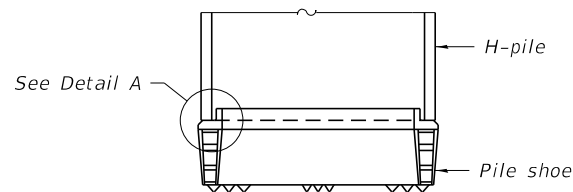
**ELEVATION**

**END VIEW**

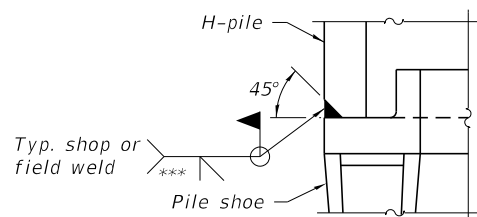
**DETAIL C**

Designation	F	Ft	Fw	W	Wt	Ww
HP 18x181	15 1/2"	1 1/2"	1"	9 1/2"	7/8"	3/4"
x157	15 1/4"	1 1/4"	1"	9 1/2"	7/8"	3/4"
x135	15 1/4"	1 1/4"	1"	9 1/2"	7/8"	3/4"
HP 16x183	13 3/4"	1 1/2"	1"	8 1/4"	7/8"	3/4"
x162	13 1/2"	1 1/2"	1"	8 1/4"	3/4"	5/8"
x141	13 1/2"	1 1/4"	7/8"	8 1/4"	3/4"	5/8"
x121	13 1/2"	1 1/4"	7/8"	8 1/4"	3/4"	5/8"
HP 14x117	12 1/2"	1"	7/8"	7 3/4"	5/8"	1/2"
x102	12 1/2"	7/8"	3/4"	7 3/4"	5/8"	1/2"
x89	12 1/2"	3/4"	1 1/16"	7 3/4"	5/8"	1/2"
x73	12 1/2"	5/8"	9/16"	7 3/4"	5/8"	1/2"
HP 12x84	10"	7/8"	1 1/16"	6 1/2"	5/8"	1/2"
x74	10"	7/8"	1 1/16"	6 1/2"	5/8"	1/2"
x63	10"	5/8"	1/2"	6 1/2"	1/2"	3/8"
x53	10"	5/8"	1/2"	6 1/2"	1/2"	3/8"
HP 10x57	8"	3/4"	9/16"	5 1/4"	1/2"	3/8"
x42	8"	5/8"	9/16"	5 1/4"	1/2"	3/8"
HP 8x36	7"	5/8"	7/16"	4 1/4"	1/2"	3/8"

**WELDED PLATE FIELD SPLICE**

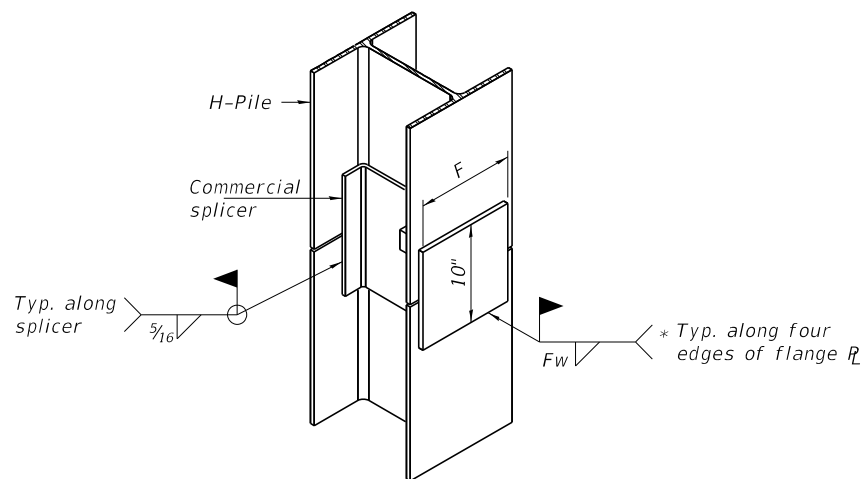


**ELEVATION**



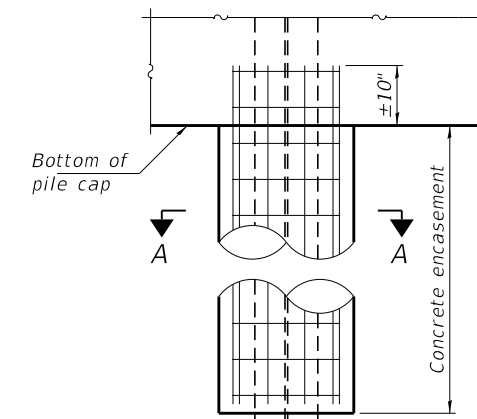
**DETAIL A**

**SHOE ATTACHMENT**

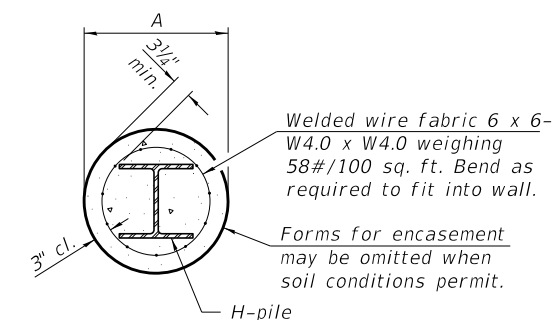


**ISOMETRIC VIEW**

**WELDED COMMERCIAL SPLICE ALTERNATE**



**ELEVATION**



**SECTION A-A**

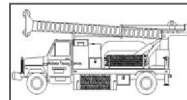
**INDIVIDUAL PILE CONCRETE ENCASUREMENT (when specified)**

Note:  
The steel H-piles shall be according to AASHTO M270 Grade 50.

- \* Interrupt welds 1/4" from end of web and/or each flange.
- \*\* Remove portions of backup plates that extend outside the flanges.
- \*\*\* Weld size per pile shoe manufacturer (5/16" min.).

F-HP 10-27-2023

FILE NAME = 230505-shi-bridge.dgn	USER NAME = rtholck	DESIGNED - J.W.F.	REVISED -	<b>STATE OF ILLINOIS KANKAKEE COUNTY HIGHWAY DEPARTMENT</b>	<b>HP PILE DETAILS STRUCTURE NO. 046-3513</b>	C.H.	SECTION	COUNTY	TOTAL SHEETS	SHEET NO.	
HAMPTON, LENZINI AND RENWICK, INC. 3035 STEVENSON DRIVE, SUITE 201 SPRINGFIELD, ILLINOIS 62703 ILLINOIS PROFESSIONAL DESIGN FIRM L.S./P.E. SE CORP. 184.000959	PLOT SCALE = \$SCALE\$	CHECKED - S.W.M.	REVISED -			14	23-00306-00-BR	KANKAKEE	25	16	
	PLOT DATE = 5/8/2025	DRAWN - D.M.F.	REVISED -			CONTRACT NO. 87851					
		CHECKED - S.W.M.	REVISED -			SHEET NO. 10 OF 11 SHEETS					



**Midwest Testing Services, Inc.**  
3705 Progress Blvd.  
Peru, IL 61354

**BORING LOG**

Sheet 1 of 1

Phone: 815-223-6696  
Fax: 815-223-6659  
e-mail: mts37@comcast.net

Client: Hampton Lenzini and Renwick, Inc.  
Project Name Sec. No.: 23-00306-00-BR S.N. 046-3352  
Project Site: Bridge on C.H. 14 (N. 12410 E. Rd.)  
Kankakee Co. Br., Momence Twp.

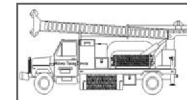
Boring No. B-1  
Surface Elev. 99.90 640.75  
Auger Depth 14.50 Rotary Depth NA  
Start Date 07/28/23 Finish Date 07/28/23

Location: 62' S. of center of Br. and 7' W. of centerline

(DEPTH) ELEV	DESCRIPTION OF MATERIALS	Graphic Log	Depth in Feet	SAMPLES						DRILLED BY	REMARKS
				Sample No.	Sample Type	Qu (TSF)	N Value (Blows)	Bulge / Shear	Moisture (%)		
99.90										Randy Safranski Diedrich D-120	
98.90	Asphalt over Aggregate		1								
97.90	638.75		2								
96.90			3	1	SS	---	3	---	12		
95.90			4								
94.90	Loose Brown Sandy Loam (Fill)		5	2	SS	---	2	---	12		
93.90			6								
92.90			7								
91.90			8	3	SS	---	5	---	11		
90.90			9								
89.90	631.25		10	4	SS	1.2	9	S	21		Water
88.90	Stiff Black Sandy Clay Loam		11								
87.90	628.75		12								
86.90	Dense Limestone Cobbles		13	5	SS	---	10	---	---		
85.90	Very Dense Weathered Limestone		14								
84.90	626.25		15								Auger Refusal on Limestone
83.90			16								
82.90			17								
81.90			18								
80.90			19								
79.90			20								

Groundwater Data: Water after auger removal 9.5' below top of pavement.  
Comments: Assumed center of bridge to be elevation 100.0

**BORING - 1**



**Midwest Testing Services, Inc.**  
3705 Progress Blvd.  
Peru, IL 61354

**BORING LOG**

Sheet 1 of 1

Phone: 815-223-6696  
Fax: 815-223-6659  
e-mail: mts37@comcast.net

Client: Hampton Lenzini and Renwick, Inc.  
Project Name Sec. No.: 23-00306-00-BR S.N. 046-3352  
Project Site: Bridge on C.H. 14 (N. 12410 E. Rd.)  
Kankakee Co. Br., Momence Twp.

Boring No. B-2  
Surface Elev. 99.80 640.83  
Auger Depth 21.00 Rotary Depth NA  
Start Date 07/28/23 Finish Date 07/28/23

Location: 59' N. of center of Br. and 7' E. of centerline

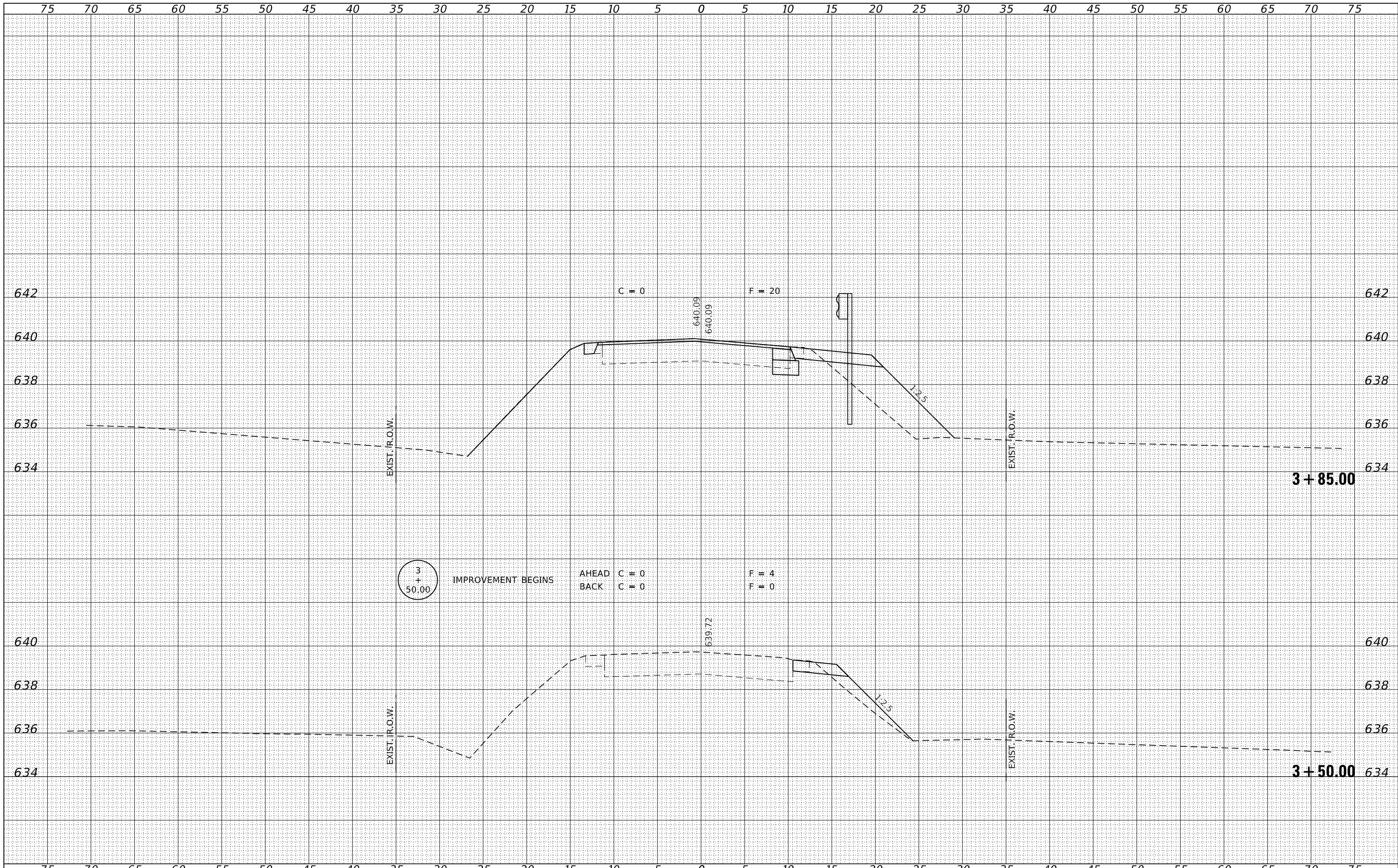
(DEPTH) ELEV	DESCRIPTION OF MATERIALS	Graphic Log	Depth in Feet	SAMPLES						DRILLED BY	REMARKS
				Sample No.	Sample Type	Qu (TSF)	N Value (Blows)	Bulge / Shear	Moisture (%)		
99.80										Randy Safranski Diedrich D-120	
98.80	Asphalt over Aggregate		1								
97.80	638.83		2								
96.80			3	1	SS	---	3	---	12		
95.80			4								
94.80	Loose Brown Sandy Loam (Fill)		5	2	SS	---	2	---	12		
93.80			6								
92.80			7								
91.80	632.83		8	3	SS	---	7	---	18		
90.80	631.83		9								Water
89.80	Stiff Black Sandy Clay Loam		10								
88.80	Dense Limestone Cobbles		11	4	SS	---	10	---	---		
87.80	629.83		12								
86.80			13	5	SS	---	10	---	---		
85.80	Very Dense Weathered Limestone		14								
84.80			15								
83.80	624.83		16	6	SS	---	10	---	---		
82.80			17								
81.80			18								
80.80	Very Dense Limestone (Drilled with Carbide Rock Bit)		19								
79.80			20								

Groundwater Data: Water after auger removal 9.5' below top of pavement.  
Comments: Assumed center of bridge to be elevation 100.0. Auger refusal at 21' depth. 619.83

**BORING - 2**

DATE	
BY	
FINISHED	
PLOTTED	
TEMPLATE	
AREAS	
CHECKED	
NO.	

DATE	
BY	
ORIGINAL	
SURVEY	
NOTE	
BOOK	
AREAS	
CHECKED	
NO.	

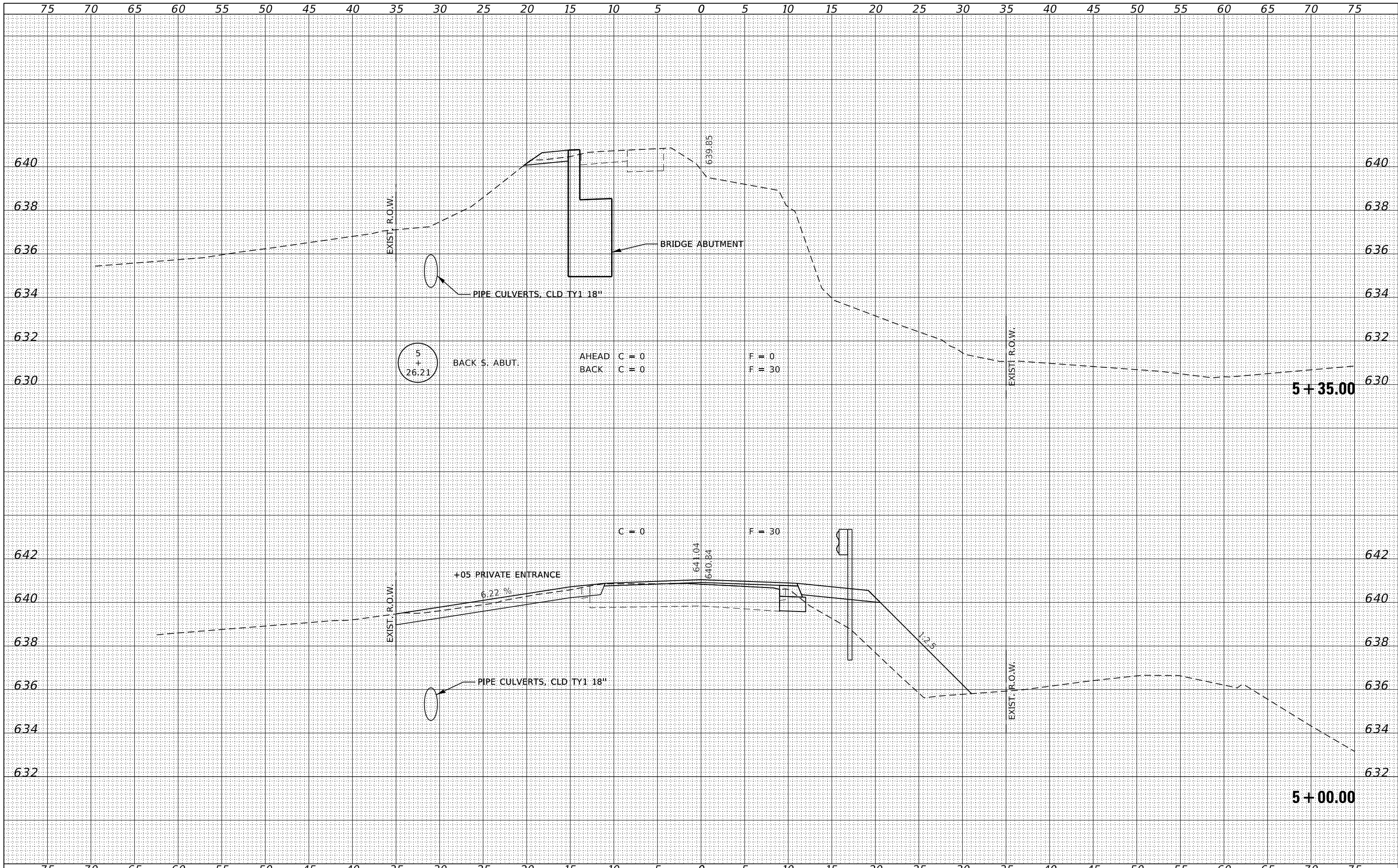


FILE NAME = 230505-shl-vs-sheets.dgn	USER NAME = mosck	DESIGNED - J.W.F.	REVISED -	<b>STATE OF ILLINOIS</b> <b>KANKAKEE COUNTY HIGHWAY DEPARTMENT</b>	<b>STATION CROSS SECTIONS</b>			C.H.	SECTION	COUNTY	TOTAL SHEETS	SHEET NO.
HAMPTON, LENZINI AND RENWICK, INC.		DRAWN - T.W.K.	REVISED -		14	23-00306-00-BR	KANKAKEE	25	18			
3885 STEVENSON DRIVE, SUITE 201 SPRINGFIELD, ILLINOIS 62703 ILLINOIS PROFESSIONAL DESIGN FIRM L.S. / P.E. / S.E. CORP. 184.000958		CHECKED - S.W.M.	REVISED -		CONTRACT NO. 87851							
PLOT SCALE = \$SCALES		DATE - 05/07/2025	REVISED -		SCALE: 2V:5H	SHEET NO. 1 OF 8 SHEETS	STA. 3+50.00 TO STA. 3+85.00	C-93-005-25	ILLINOIS	FED. AID PROJECT 7M6S(350)		



DATE	
BY	
FINAL SURVEY	
SURVEYED	
PLOTTED	
TEMPLATE	
NOTE BOOK	
AREAS	
CHECKED	
NO.	

DATE	
BY	
ORIGINAL SURVEY	
SURVEYED	
PLOTTED	
TEMPLATE	
NOTE BOOK	
AREAS	
CHECKED	
NO.	



FILE NAME = 230505-shl-vs-sheets.dgn  
 USER NAME = rmosck  
 DESIGNED - J.W.F.  
 DRAWN - T.W.K.  
 CHECKED - S.W.M.  
 DATE - 05/07/2025  
 PLOT SCALE = \$SCALE\$  
 PLOT DATE = 5/8/2025

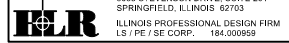
REVISIONS:  
 REVISION NO. | DATE | DESCRIPTION  
 1 | | |  
 2 | | |  
 3 | | |  
 4 | | |  
 5 | | |

STATE OF ILLINOIS  
 KANKAKEE COUNTY HIGHWAY DEPARTMENT

STATION CROSS SECTIONS

SCALE: 2V:5H | SHEET NO. 3 OF 8 SHEETS | STA. 5+00.00 TO STA. 5+35.00

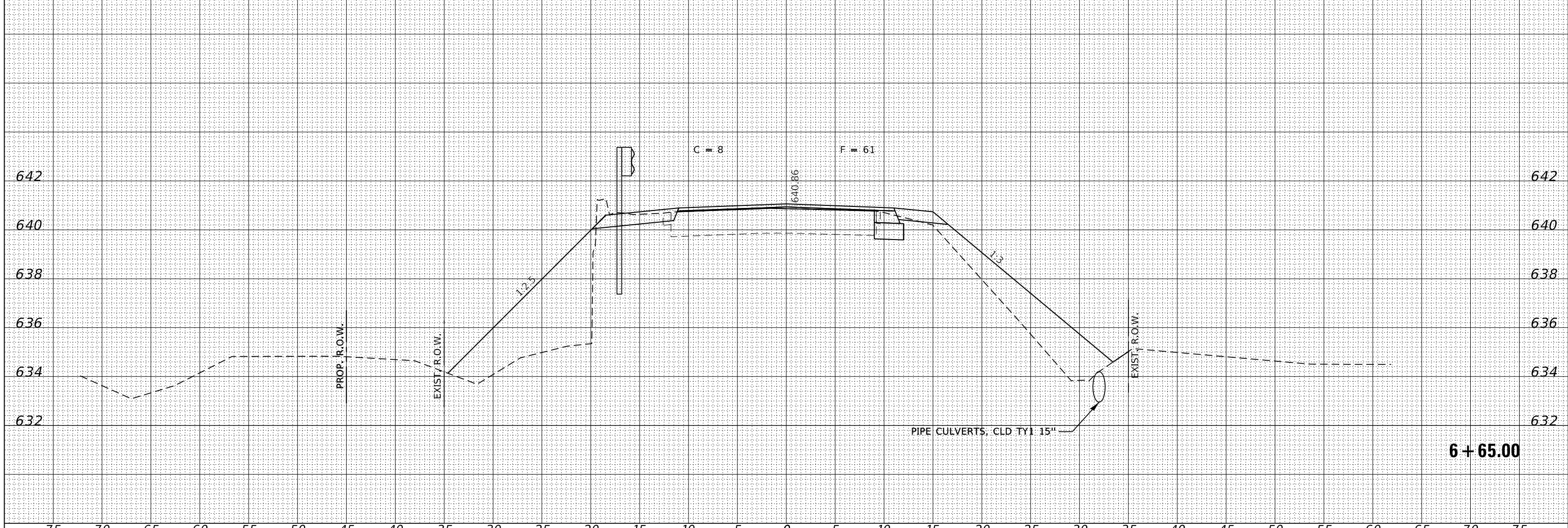
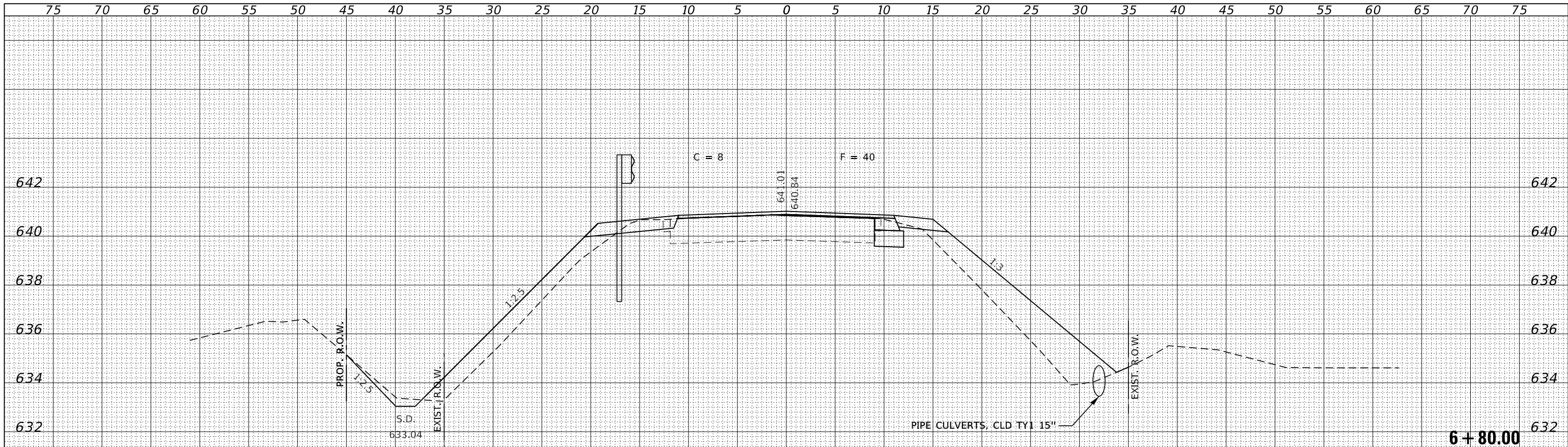
C.H.	SECTION	COUNTY	TOTAL SHEETS	SHEET NO.
14	23-00306-00-BR	KANKAKEE	25	20
CONTRACT NO. 87851				
C-93-005-25   ILLINOIS   FED. AID PROJECT 7M6S(350)				





DATE	
BY	
FINAL SURVEY	SURVEYED
NOTE BOOK	PLOTTED
NO.	TEMPLATE
	AREAS
	CHECKED

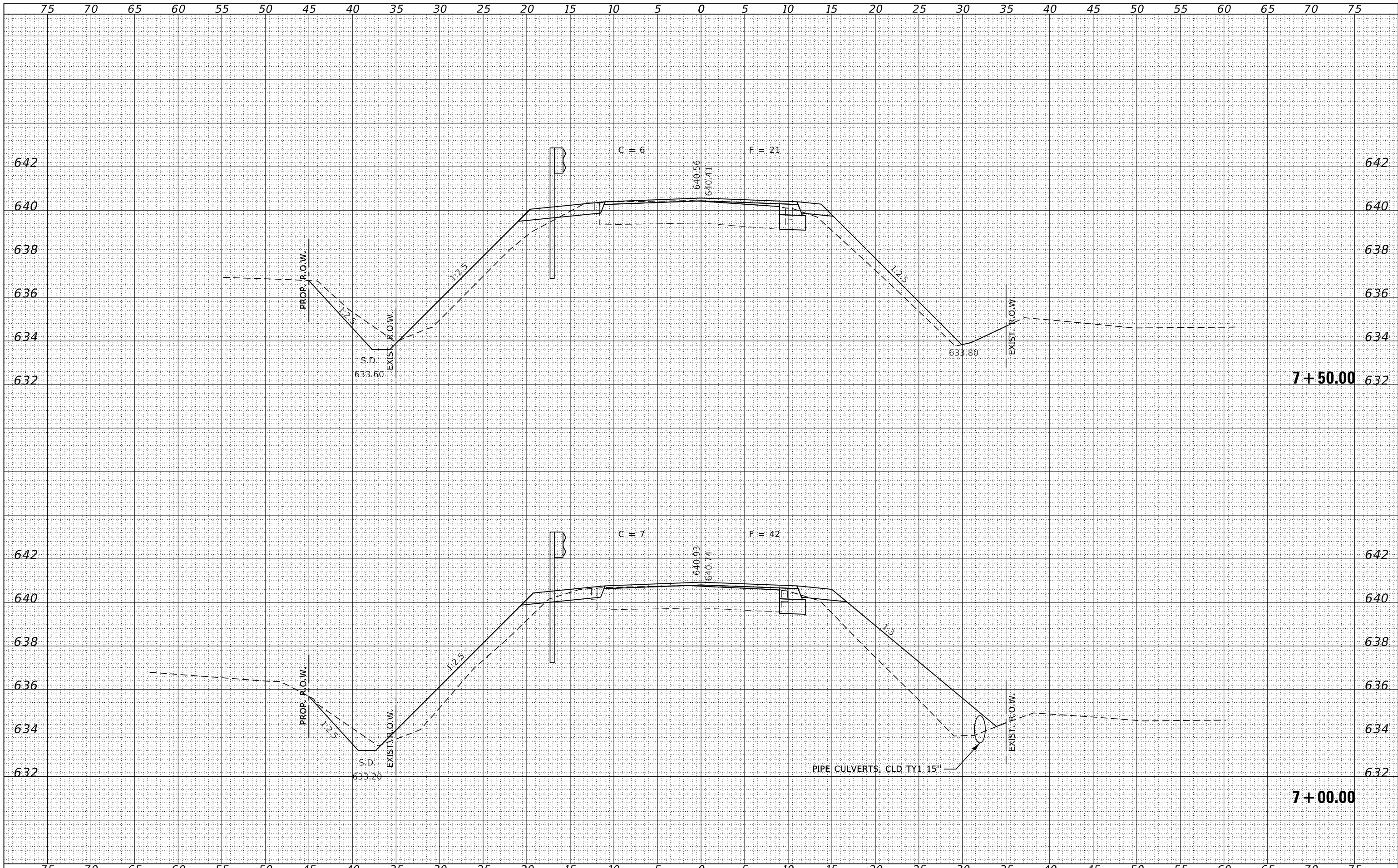
DATE	
BY	
ORIGINAL SURVEY	SURVEYED
NOTE BOOK	PLOTTED
NO.	TEMPLATE
	AREAS
	CHECKED



FILE NAME = 230505-shl-vs-sheets.dgn	USER NAME = mosck	DESIGNED - J.W.F.	REVISD -	<b>STATE OF ILLINOIS</b> <b>KANKAKEE COUNTY HIGHWAY DEPARTMENT</b>	<b>STATION CROSS SECTIONS</b>			C.H.	SECTION	COUNTY	TOTAL SHEETS	SHEET NO.
HAMPTON, LENZINI AND RENWICK, INC. 3885 STEVENSON DRIVE, SUITE 201 SPRINGFIELD, ILLINOIS 62761 ILLINOIS PROFESSIONAL DESIGN FIRM L/S / PE / SE CORP. 184.000958		DRAWN - T.W.K.	REVISD -		14	23-00306-00-BR	KANKAKEE	25	22	CONTRACT NO. 87851		
PLOT SCALE = \$SCALES		CHECKED - S.W.M.	REVISD -		SCALE: 2V:5H	SHEET NO. 5 OF 8 SHEETS	STA. 6+65.00 TO STA. 6+80.00	C-93-005-25	ILLINOIS	FED. AID PROJECT 7M6S(350)		
PLOT DATE = 5/8/2025		DATE - 05/07/2025	REVISD -									

DATE	
BY	
FINAL SURVEY	SURVEYED
NOTE BOOK	PLOTTED
NO.	TEMPLATE
	AREAS
	CHECKED

DATE	
BY	
ORIGINAL SURVEY	SURVEYED
NOTE BOOK	PLOTTED
NO.	TEMPLATE
	AREAS
	CHECKED



FILE NAME = 230505-shl-vs-sheets.dgn  
 HAMPTON, LENZINI AND RENWICK, INC.  
 3885 STEVENSON DRIVE, SUITE 201  
 SPRINGFIELD, ILLINOIS 62703  
 ILLINOIS PROFESSIONAL DESIGN FIRM  
 L/S / PE / SE CORP. 184.000958

USER NAME = rmosck  
 DESIGNED - J.W.F.  
 DRAWN - T.W.K.  
 CHECKED - S.W.M.  
 DATE - 05/07/2025  
 PLOT SCALE = \$SCALES  
 PLOT DATE = 5/8/2025

REVISED -  
 REVISED -  
 REVISED -  
 REVISED -

STATE OF ILLINOIS  
 KANKAKEE COUNTY HIGHWAY DEPARTMENT

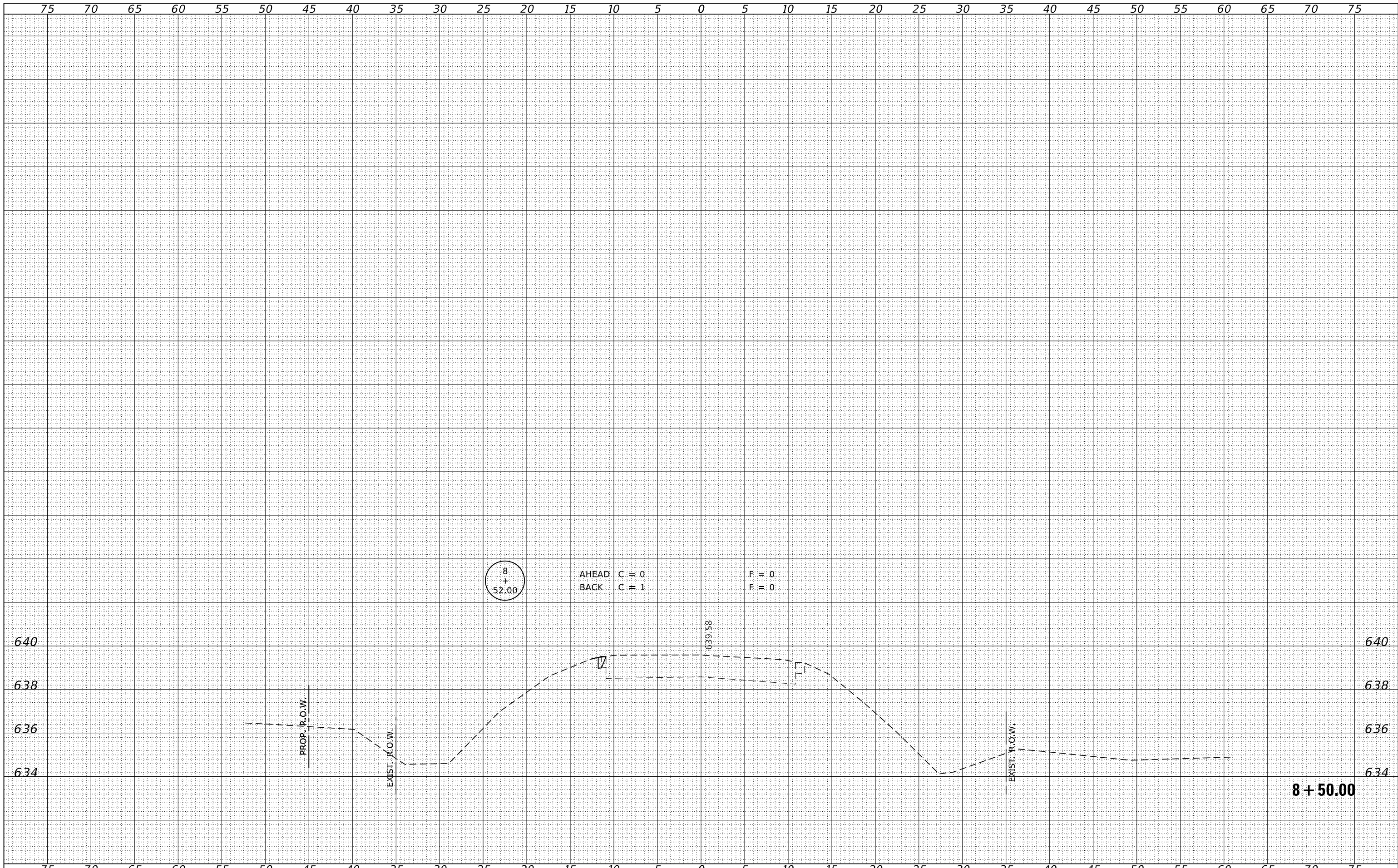
STATION CROSS SECTIONS  
 SCALE: 2V:5H  
 SHEET NO. 6 OF 8 SHEETS  
 STA. 7+00.00 TO STA. 7+50.00

C.H.	SECTION	COUNTY	TOTAL SHEETS	SHEET NO.
14	23-00306-00-BR	KANKAKEE	25	23
CONTRACT NO. 87851				
ILLINOIS FED. AID PROJECT 7M6S(350)				



DATE	
BY	
FINAL SURVEY	SURVEYED
NOTE BOOK	PLOTTED
NO.	TEMPLATE
	AREAS
	CHECKED

DATE	
BY	
ORIGINAL SURVEY	SURVEYED
NOTE BOOK	PLOTTED
NO.	TEMPLATE
	AREAS
	CHECKED



FILE NAME = 230505-shl-vs-sheets.dgn  
 USER NAME = mosck  
 DESIGNED - J.W.F.  
 DRAWN - T.W.K.  
 CHECKED - S.W.M.  
 DATE - 05/07/2025

REVISIONS  
 REVISION NO. | DATE | DESCRIPTION  
 1 | | |  
 2 | | |  
 3 | | |  
 4 | | |  
 5 | | |

DESIGNED - J.W.F.  
 DRAWN - T.W.K.  
 CHECKED - S.W.M.  
 DATE - 05/07/2025

STATE OF ILLINOIS  
 KANKAKEE COUNTY HIGHWAY DEPARTMENT

STATION CROSS SECTIONS  
 SCALE: 2V:5H  
 SHEET NO. 8 OF 8 SHEETS  
 STA. 8+50.00 TO STA. 8+50.00

C.H.	SECTION	COUNTY	TOTAL SHEETS	SHEET NO.
14	23-00306-00-BR	KANKAKEE	25	25
CONTRACT NO. 87851				
C-93-005-25 ILLINOIS FED. AID PROJECT 7M6S(350)				

