

STATE OF ILLINOIS  
DEPARTMENT OF TRANSPORTATION

F.A.P. RTE.	SECTION	COUNTY	TOTAL SHEETS	SHEET NO.
412	D2 PP 2026-01	WINNEBAGO	4	1
		ILLINOIS	CONTRACT NO. 64U86	

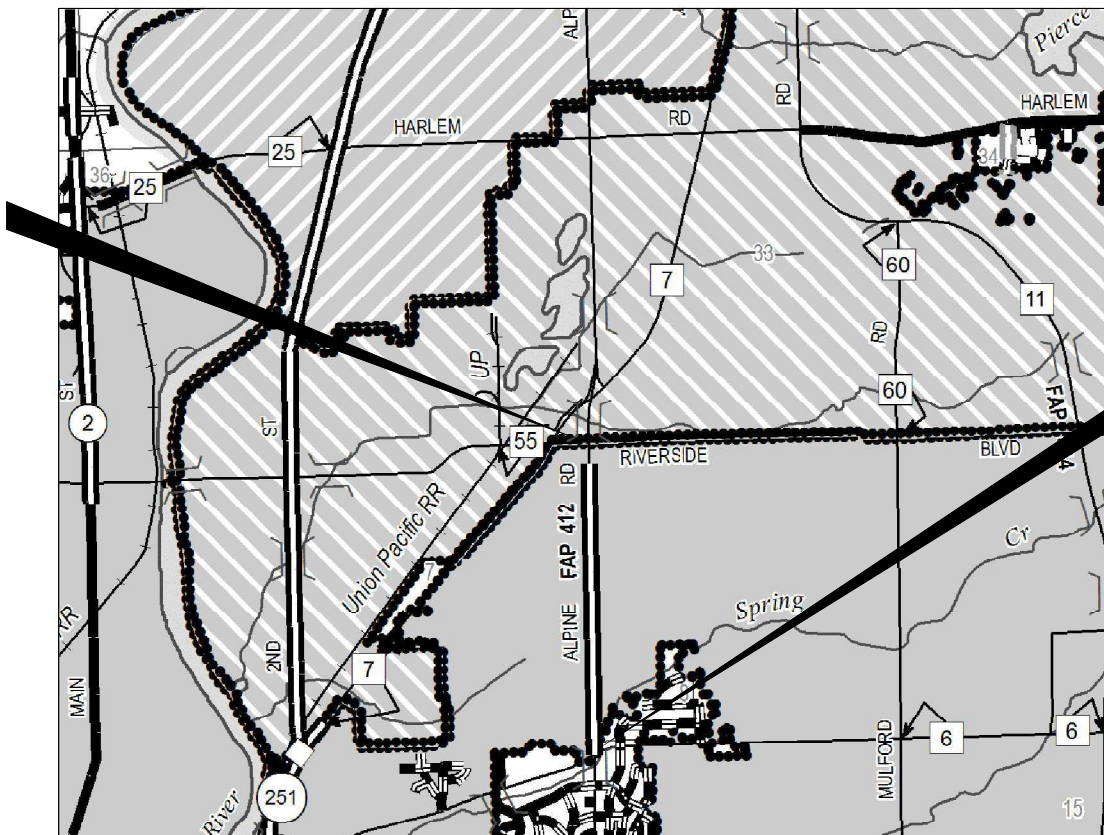
# PROPOSED HIGHWAY PLANS

FAP 412 (ALPINE RD)  
D2 PP 2026-01  
PAVEMENT PATCHING  
WINNEBAGO COUNTY

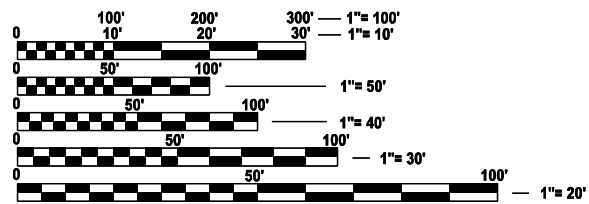


C-92-112-25

PROJECT BEGINS  
100' SOUTH OF  
E. RIVERSIDE BLVD.



PROJECT ENDS  
100' NORTH OF  
SPRING CREEK RD.



FULL SIZE PLANS HAVE BEEN PREPARED USING STANDARD ENGINEERING SCALES. REDUCED SIZED PLANS WILL NOT CONFORM TO STANDARD SCALES. IN MAKING MEASUREMENTS ON REDUCED PLANS, THE ABOVE SCALES MAY BE USED.

J.U.L.I.E.  
JOINT UTILITY LOCATION INFORMATION FOR EXCAVATION  
1-800-892-0123  
OR 811

DESIGNER: NICK VOCK (815-285-5407)

GROSS LENGTH = 15,840 FT. = 3 MILES  
NET LENGTH = 7,920 FT. = 1.5 MILES

CONTRACT NO. 64U86

STATE OF ILLINOIS  
DEPARTMENT OF TRANSPORTATION

SUBMITTED March 25 20 26

*Mina Thompson*  
REGIONAL ENGINEER

May 8 20 26  
*[Signature]*  
ENGINEER OF DESIGN AND ENVIRONMENT

May 8 20 26  
*[Signature]*  
DIRECTOR OF HIGHWAYS PROJECT IMPLEMENTATION

**PRINTED BY THE AUTHORITY  
OF THE STATE OF ILLINOIS**

**INDEX OF SHEETS**

- 1 COVER SHEET
- 2 INDEX OF SHEETS, STANDARDS, GENERAL NOTES
- 3 SUMMARY OF QUANTITIES
- 4 CONCRETE PATCHING SCHEDULE

**GENERAL NOTES**

WHEN LAYING OUT FOR PATCHING, THE MINIMUM DISTANCE BETWEEN NEW PATCHES (SAW CUT TO SAW CUT) SHALL BE 15 FEET. WHEN PATCH SPACING IS LESS THAN 15 FEET, THE PAVEMENT BETWEEN PATCHES SHALL ALSO BE REMOVED AND REPLACED.

THE CITY OF ROCKFORD HAS A SOUND ORDINANCE REQUIRING WORK TO BE DONE BETWEEN THE HOURS OF 7 AM AND 7 PM.

CONTRACTOR TO CONFIRM PATCHING DOES NOT ELIMINATE DETECTOR LOOPS. CONTACT BEN DAHLMEIER WITH THE CITY OF ROCKFORD FOR ASSISTANCE ON LOCATING 779-274-1493 (BEN.DAHLMEIER@ROCKFORD.GOV)

CONTRACTOR TO KEEP SLURRY AND DEBRIS FROM SAWING AND PATCHING ACTIVITIES FROM ENTERING INLETS.

CURB AND GUTTER TO BE REPLACED AS NEEDED DETERMINED BY THE ENGINEER. COMBINATION CURB AND GUTTER B-6.12 IS INTENDED FOR MEDIAN LOCATIONS. COMBINATION CURB AND GUTTER M-6.24 IS INTENDED FOR OUTER EDGE LOCATIONS. CONTRACTOR TO MATCH OR BLEND AT ANY LOCATIONS THAT ARE DIFFERENT.

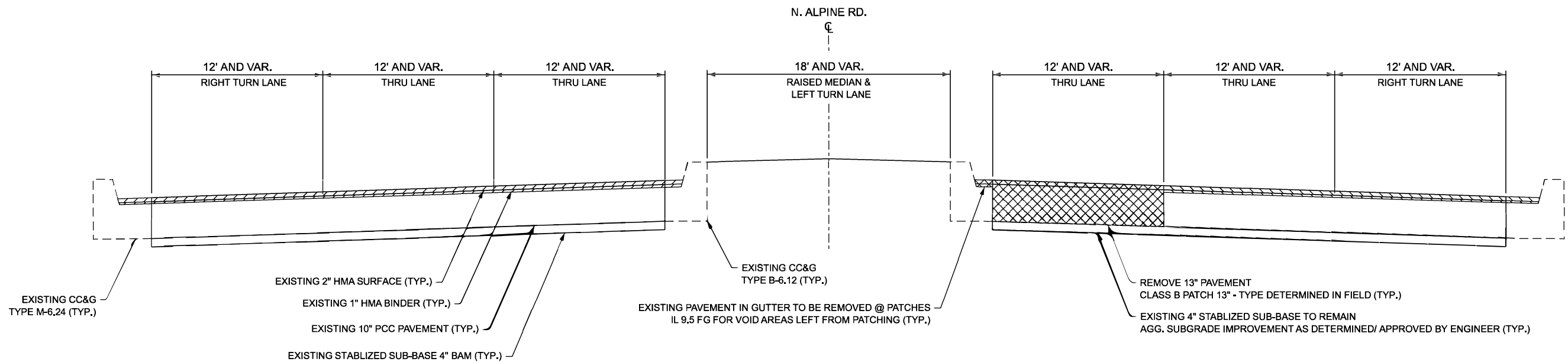
CONTRACTOR TO REMOVE ANY PAVEMENT OVER CURB GUTTERS ADJACENT TO PATCHES. USE A "IL 9.5 FG MIX" FOR FILLING IN SECTIONS OF GUTTER ONCE PATCHES ARE COMPLETE. PATCHES TO MATCH FINISHED GRADE OF ADJACENT SURFACE AND SHOULD BE COMPACTED TO THE SATISFACTION OF THE ENGINEER. THIS COST IS TO BE INCLUDED IN THE COST OF CLASS B PATCHES.

CONTRACTOR SHOULD MAKE AN EFFORT TO NOT REMOVE THE 4" OF STABILIZED SUBBASE. AGGREGATE SUBGRADE IMPROVEMENT IS PROVIDED AS A CONTINGENCY IN SITUATIONS THIS IS NOT POSSIBLE. THE ENGINEER SHOULD BE NOTIFIED OF ANY SUBGRADE IMPROVEMENT THAT IS REQUIRED BEFORE BEING PLACED.

**HIGHWAY STANDARDS**

- 420001-11 PAVEMENT JOINTS
- 420701-03 PAVEMENT WELDED WIRE REINFORCEMENT
- 442101-09 CLASS B PATCHES
- 701101-05 OFF-ROAD OPERATIONS, MULTILANE, 15'(4.5m) TO 24'(600mm) FROM PAVEMENT EDGE
- 701426-09 LANE CLOSURE MULTILANE INTERMITTENT OR MOVING OPERATIONS FOR SPEEDS ≥ 45 MPH
- 701601-09 URBAN LANE CLOSURE, MULTILANE, 1W OR 2W WITH NONTRAVERSABLE MEDIAN
- 701701-10 URBAN LANE CLOSURE, MULTILANE INTERSECTION
- 701901-11 TRAFFIC CONTROL DEVICES
- 720011-01 METAL POST FOR SIGNS, MARKERS AND DELINEATORS
- 728001-01 TELESCOPING STEEL SIGN SUPPORT
- 729001-01 APPLICATIONS OF TYPES A AND B METAL POST (FOR SIGNS & MARKERS)

**TYPICAL SECTION**  
NOTES APPLY TO NB AND SB



MODEL: D2\_SHT\_INDEX  
FILE NAME: p:\rocksp\benifly.com\PN\DOT\Documents\DOT Office\District 2\ORD Project\Operations\Maintenance Section\Draw\Alm\Winnebago\Operations\Contract Maintenance\FY 2026\84U86 - Alpine Rd - Patching\CAD\Draws\84U86-02 - Index sheet.dgn

USER NAME = Nicholas.Vock	DESIGNED -	REVISED -
	DRAWN -	REVISED -
PLOT SCALE = \$SCALE\$	CHECKED -	REVISED -
PLOT DATE = 4/16/2026	DATE -	REVISED -

**STATE OF ILLINOIS  
DEPARTMENT OF TRANSPORTATION**

**INDEX OF SHEETS & HIGHWAY STANDARDS**

SCALE: SHEET OF SHEETS STA. TO STA.

F.A.P. RTE.	SECTION	COUNTY	TOTAL SHEETS	SHEET NO.
412	D2 PP 2026-01	WINNEBAGO	4	2
			CONTRACT NO. 64U86	
ILLINOIS FED. AID PROJECT				

MODEL: D2\_SHT\_SQC  
 FILE NAME: p:\2026\pp\winnebago\winnebago\Operations\Maintenance Section\Drawings\Winnebago\Operations\Contract Maintenance\2026\412 - Alpha Rd - Patching\CD\Drawings\412\_SQC.dwg

SUMMARY OF QUANTITIES				CONSTR. CODE
				100% STATE
CODE NO.	ITEM	UNIT	TOTAL QUANTITY	ROADWAY
				0006
28000510	INLET FILTERS	EACH	20	20
30300011	AGGREGATE SUBGRADE IMPROVEMENT	TON	50	50
44000500	COMBINATION CURB AND GUTTER REMOVAL	FOOT	200	200
44200050	WELDED WIRE REINFORCEMENT	SQ YD	134	134
44201007	CLASS B PATCHES, TYPE II, 13 INCH	SQ YD	1910	1910
44201011	CLASS B PATCHES, TYPE III, 13 INCH	SQ YD	80	80
44201013	CLASS B PATCHES, TYPE IV, 13 INCH	SQ YD	54	54
44201299	DOWEL BARS 1 1/2"	EACH	4480	4480
44213200	SAW CUTS	FOOT	11906	11906
44213204	TIE BARS 3/4"	EACH	9	9
60255500	MANHOLES TO BE ADJUSTED	EACH	5	5
60260100	INLETS TO BE ADJUSTED	EACH	5	5
60603800	COMBINATION CONCRETE CURB AND GUTTER, TYPE B-6.12	FOOT	100	100
60610400	COMBINATION CONCRETE CURB AND GUTTER, TYPE M-6.24	FOOT	100	100

\* SPECIALTY ITEM

SUMMARY OF QUANTITIES				CONSTR. CODE
				100% STATE
CODE NO.	ITEM	UNIT	TOTAL QUANTITY	ROADWAY
				0006
67100100	MOBILIZATION	L SUM	1	1
70102630	TRAFFIC CONTROL AND PROTECTION, STANDARD 701601	L SUM	1	1
70102635	TRAFFIC CONTROL AND PROTECTION, STANDARD 701701	L SUM	1	1
70103815	TRAFFIC CONTROL SURVEILLANCE	CAL DA	10	10
70107025	CHANGEABLE MESSAGE SIGN	CAL DA	68	68

USER NAME = Nicholas.Vock	DESIGNED -	REVISED -
PLOT SCALE = \$\$SCALE\$	DRAWN -	REVISED -
PLOT DATE = 3/26/2026	CHECKED -	REVISED -
	DATE -	REVISED -

**STATE OF ILLINOIS**  
**DEPARTMENT OF TRANSPORTATION**

**SUMMARY OF QUANTITIES**

SCALE: SHEET OF SHEETS STA. TO STA.

F.A.P. RTE.	SECTION	COUNTY	TOTAL SHEETS	SHEET NO.
412	D2 PP 2026-01	WINNEBAGO	4	3
ILLINOIS   FED. AID PROJECT			CONTRACT NO. 64U86	

N. ALPINE SB

FIELD INPUT AREA	AREA OF PATCHES										ADDITIONAL ITEMS					
	LENGTH OF PATCH		TYPE 1		TYPE 2		TYPE 3		TYPE 4		SAWING (3W+7L) (ft)	DOWEL BARS (each)	TIE BARS (each)	PAVEMENT FABRIC (yd²)		
	LT LANE (ft)	RT LANE (ft)	LT LANE (yd²)	RT LANE (yd²)	LT LANE (yd²)	RT LANE (yd²)	LT LANE (yd²)	RT LANE (yd²)	LT LANE (yd²)	RT LANE (yd²)						
SB																
Riverside																
	6	6	-	-	8.0	8.0	-	-	-	-	102	40	-	-		
	6	6	-	-	8.0	8.0	-	-	-	-	102	40	-	-		
	10	10	-	-	13.3	13.3	-	-	-	-	122	40	-	-		
	6	6	-	-	8.0	8.0	-	-	-	-	102	40	-	-		
	6	6	-	-	8.0	8.0	-	-	-	-	102	40	-	-		
	10	10	-	-	13.3	13.3	-	-	-	-	122	40	-	-		
	6	6	-	-	8.0	8.0	-	-	-	-	102	40	-	-		
	6	6	-	-	8.0	8.0	-	-	-	-	102	40	-	-		
	10	10	-	-	13.3	13.3	-	-	-	-	122	40	-	-		
	6	6	-	-	8.0	8.0	-	-	-	-	102	40	-	-		
Siseman Rd.																
	6	6	-	-	8.0	8.0	-	-	-	-	102	40	-	-		
	6	6	-	-	8.0	8.0	-	-	-	-	102	40	-	-		
	6	6	-	-	8.0	8.0	-	-	-	-	102	40	-	-		
	6	6	-	-	8.0	8.0	-	-	-	-	102	40	-	-		
Innsbruck																
	6	6	-	-	8.0	8.0	-	-	-	-	102	40	-	-		
	6	6	-	-	8.0	8.0	-	-	-	-	102	40	-	-		
	6	6	-	-	8.0	8.0	-	-	-	-	102	40	-	-		
	8	8	-	-	10.7	10.7	-	-	-	-	112	40	-	-		
	0	0	-	-	10.7	10.7	-	-	-	-	112	40	-	-		
	6	6	-	-	8.0	8.0	-	-	-	-	102	40	-	-		
	6	6	-	-	8.0	8.0	-	-	-	-	102	40	-	-		
	6	6	-	-	8.0	8.0	-	-	-	-	102	40	-	-		
	6	6	-	-	8.0	8.0	-	-	-	-	102	40	-	-		
Garden Ln.																
	6	6	-	-	8.0	8.0	-	-	-	-	102	40	-	-		
	6	6	-	-	8.0	8.0	-	-	-	-	102	40	-	-		
	6	6	-	-	8.0	8.0	-	-	-	-	102	40	-	-		
	8	8	-	-	10.7	10.7	-	-	-	-	112	40	-	-		
	8	8	-	-	10.7	10.7	-	-	-	-	112	40	-	-		
	8	8	-	-	8.0	8.0	-	-	-	-	102	40	-	-		
	6	6	-	-	8.0	8.0	-	-	-	-	102	40	-	-		
	10	10	-	-	13.3	13.3	-	-	-	-	122	40	-	-		
	6	6	-	-	8.0	8.0	-	-	-	-	102	40	-	-		
	6	6	-	-	8.0	8.0	-	-	-	-	102	40	-	-		
	6	6	-	-	8.0	8.0	-	-	-	-	102	40	-	-		
Pepper Dr.																
	6	6	-	-	8.0	8.0	-	-	-	-	102	40	-	-		
	6	6	-	-	8.0	8.0	-	-	-	-	102	40	-	-		
	6	6	-	-	8.0	8.0	-	-	-	-	102	40	-	-		
	8	8	-	-	10.7	10.7	-	-	-	-	112	40	-	-		
	6	6	-	-	8.0	8.0	-	-	-	-	102	40	-	-		
	6	6	-	-	8.0	8.0	-	-	-	-	102	40	-	-		
	6	6	-	-	8.0	8.0	-	-	-	-	102	40	-	-		
	6	6	-	-	8.0	8.0	-	-	-	-	102	40	-	-		
	8	8	-	-	10.7	10.7	-	-	-	-	112	40	-	-		
	6	6	-	-	8.0	8.0	-	-	-	-	102	40	-	-		
	8	8	-	-	10.7	10.7	-	-	-	-	112	40	-	-		
	6	6	-	-	8.0	8.0	-	-	-	-	102	40	-	-		
	10	10	-	-	13.3	13.3	-	-	-	-	122	40	-	-		
	6	6	-	-	8.0	8.0	-	-	-	-	102	40	-	-		
	6	6	-	-	8.0	8.0	-	-	-	-	102	40	-	-		
	6	6	-	-	8.0	8.0	-	-	-	-	102	40	-	-		
	6	6	-	-	8.0	8.0	-	-	-	-	102	40	-	-		
Dorsett																
	6	6	-	-	8.0	8.0	-	-	-	-	102	40	-	-		
	6	6	-	-	8.0	8.0	-	-	-	-	102	40	-	-		
	6	6	-	-	8.0	8.0	-	-	-	-	102	40	-	-		
	6	6	-	-	8.0	8.0	-	-	-	-	102	40	-	-		
	8	8	-	-	10.7	10.7	-	-	-	-	112	40	-	-		
	8	8	-	-	10.7	10.7	-	-	-	-	112	40	-	-		
	6	6	-	-	8.0	8.0	-	-	-	-	102	40	-	-		
Alpine Oaks																
	8	8	-	-	10.7	10.7	-	-	-	-	112	40	-	-		
	10	10	-	-	13.3	13.3	-	-	-	-	122	40	-	-		
	15	15	-	-	-	-	20.0	20.0	-	-	147	40	-	40.0		
	6	6	-	-	8.0	8.0	-	-	-	-	102	40	-	-		
	6	6	-	-	8.0	8.0	-	-	-	-	102	40	-	-		
	6	6	-	-	8.0	8.0	-	-	-	-	102	40	-	-		
	8	8	-	-	10.7	10.7	-	-	-	-	112	40	-	-		
	10	10	-	-	13.3	13.3	-	-	-	-	122	40	-	-		
Spring Creek																
	6	6	-	-	8.0	8.0	-	-	-	-	102	40	-	-		
<b>Total</b>					<b>0.0</b>	<b>0.0</b>	<b>650.7</b>	<b>642.7</b>	<b>20.0</b>	<b>20.0</b>	<b>0.0</b>	<b>0.0</b>	<b>7795</b>	<b>2940</b>	<b>0</b>	<b>40.0</b>

N. ALPINE NB

FIELD INPUT AREA	AREA OF PATCHES										ADDITIONAL ITEMS			
	LENGTH OF PATCH		TYPE 1		TYPE 2		TYPE 3		TYPE 4		SAWING (3W+7L) (ft)	DOWEL BARS (each)	TIE BARS (each)	PAVEMENT FABRIC (yd²)
	LT LANE (ft)	RT LANE (ft)	LT LANE (yd²)	RT LANE (yd²)	LT LANE (yd²)	RT LANE (yd²)	LT LANE (yd²)	RT LANE (yd²)	LT LANE (yd²)	RT LANE (yd²)				
NB														
	6	6	-	-	8.0	8.0	-	-	-	-	102	40	-	-
	6	6	-	-	8.0	8.0	-	-	-	-	102	40	-	-
	6	6	-	-	8.0	8.0	-	-	-	-	102	40	-	-
Berkshire														
	20	20	-	-	-	-	-	-	26.7	26.7	172	40	9	53.3
	6	6	-	-	8.0	8.0	-	-	-	-	102	40	-	-
	10	10	-	-	13.3	13.3	-	-	-	-	122	40	-	-
	6	6	-	-	8.0	8.0	-	-	-	-	102	40	-	-
	6	6	-	-	8.0	8.0	-	-	-	-	102	40	-	-
	15	15	-	-	-	-	20.0	20.0	-	-	147	40	-	40.0
	6	6	-	-	8.0	8.0	-	-	-	-	102	40	-	-
	6	6	-	-	8.0	8.0	-	-	-	-	102	40	-	-
Marsh														
	6	6	-	-	8.0	8.0	-	-	-	-	102	40	-	-
Alpine Oaks														
	6	6	-	-	8.0	8.0	-	-	-	-	102	40	-	-
Old Pyne														
	6	6	-	-	8.0	8.0	-	-	-	-	102	40	-	-
	6	6	-	-	8.0	8.0	-	-	-	-	102	40	-	-
	6	6	-	-	8.0	8.0	-	-	-	-	102	40	-	-
Burningtree														
	6	6	-	-	8.0	8.0	-	-	-	-	102	40	-	-
	6	6	-	-	8.0	8.0	-	-	-	-	102	40	-	-
	6	6	-	-	8.0	8.0	-	-	-	-	102	40	-	-
Pepper Dr.														
	6	6	-	-	8.0	8.0	-	-	-	-	102	40	-	-
	6	6	-	-	8.0	8.0	-	-	-	-	102	40	-	-
	6	6	-	-	8.0	8.0	-	-	-	-	102	40	-	-
	6	6	-	-	8.0	8.0	-	-	-	-	102	40	-	-
	6	6	-	-	8.0	8.0	-	-	-	-	54	20	-	-
	6	6	-	-	8.0	8.0	-	-	-	-	102	40	-	-
High Pt. Dr														
	6	6	-	-	8.0	8.0	-	-	-	-	102	40	-	-
	6	6	-	-	8.0	8.0	-	-	-	-	102	40	-	-
	6	6	-	-	8.0	8.0	-	-	-	-	102	40	-	-
	6	6	-	-	8.0	8.0	-	-	-	-	102	40	-	-
Innsbruck														
	6	6	-	-	8.0	8.0	-	-	-	-	102	40	-	-
	6	6	-	-	8.0	8.0	-	-	-	-	102	40	-	-
Siseman Rd.														
	6	6	-	-	8.0	8.0	-	-	-	-	102	40	-	-
	6	6	-	-	8.0	8.0	-	-	-	-	102	40	-	-
	10	10	-	-	13.3	13.3	-	-	-	-	122	40	-	-
	6	6	-	-	8.0	8.0	-	-	-	-	102	40	-	-
	6	6	-	-	8.0	8.0	-	-	-	-	102	40	-	-
	10	10	-	-	13.3	13.3	-	-						