





MODEL: D:\\_SUF\_SCO  
 FILE NAME: I:\Projects\Operations\Maintenance Section\Draw\Minneapolis\Operations\Contract Maintenance\FY\_2026\64V25-Median and Montague US 70 ramp Intersections\CAD\sheet64V25-03-SCO.dgn

SUMMARY OF QUANTITIES				CONSTR. CODE
				100% STATE
CODE NO.	ITEM	UNIT	TOTAL QUANTITY	ROADWAY
				0005
40600295	POLYMERIZED BITUMINOUS MATERIALS (TACK COAT)	POUND	2352	2352
40600900	HOT-MIX ASPHALT BINDER COURSE (HAND METHOD), N50	TON	50	50
40600990	TEMPORARY RAMP	SQ YD	160	160
40604000	HOT-MIX ASPHALT SURFACE COURSE, IL-9.5FG, MIX "C", N50	TON	732	732
44000159	HOT-MIX ASPHALT SURFACE REMOVAL, 2 1/2"	SQ YD	5226	5226
48102100	AGGREGATE WEDGE SHOULDER, TYPE B	TON	115	115
67100100	MOBILIZATION	L SUM	1	1
70100450	TRAFFIC CONTROL AND PROTECTION, STANDARD 701201	L SUM	1	1
* 78009000	MODIFIED URETHANE PAVEMENT MARKING - LETTERS AND SYMBOLS	SQ FT	72	72
* 78009004	MODIFIED URETHANE PAVEMENT MARKING - LINE 4"	FOOT	2250	2250
* 78009008	MODIFIED URETHANE PAVEMENT MARKING - LINE 8"	FOOT	640	640
* 78009012	MODIFIED URETHANE PAVEMENT MARKING - LINE 12"	FOOT	320	320
* 78009024	MODIFIED URETHANE PAVEMENT MARKING - LINE 24"	FOOT	80	80

\*= SPECIALTY ITEM

USER NAME = Nicholas,Vock	DESIGNED -	REVISED -	<b>STATE OF ILLINOIS DEPARTMENT OF TRANSPORTATION</b>	<b>SUMMARY OF QUANTITIES</b>				F.A.P. RTE.	SECTION	COUNTY	TOTAL SHEETS	SHEET NO.
PLOT SCALE = \$SCALE\$	CHECKED -	REVISED -						301	(1&2) RS	WINNEBAGO	5	3
PLOT DATE = 3/10/2026	DATE -	REVISED -		SCALE:		SHEET OF SHEETS	STA.	TO STA.	CONTRACT NO. 64V25			
								ILLINOIS FED. AID PROJECT				

MODEL: D:\\_SHT PLAN  
 FILE NAME: I:\Projects\Operations\Maintenance Section\Drawings\Winnebago\Operations\Contract Maintenance\FY 2026\64V25-Median and Montague US 20 ramp Intersections\CAD\sheet64V25-04-Plan\_Sheet.dgn



BEGIN RESURFACING AT PAVEMENT BREAK AT THE END OF THE RETURN (TYP.)

4" EDGE LINE - WHITE (TYP.)

RIGHT AND LEFT TURN ARROW - WHITE (TYP.)

24" STOP BAR - WHITE (TYP.)

PAVEMENT MARKING 12" - WHITE (TYP.)

PAVEMENT MARKING 8" - WHITE (TYP.)

3' AGG. WEDGE SHOULDER (TYP.)

2 1/2" HMA REMOVAL  
2 1/2" HMA SURFACE IL-9.5 FG, MIX "C", N50

USER NAME = Nicholas,Vock	DESIGNED -	REVISED -
	DRAWN -	REVISED -
PLOT SCALE = \$SCALE\$	CHECKED -	REVISED -
PLOT DATE = 3/11/2026	DATE -	REVISED -

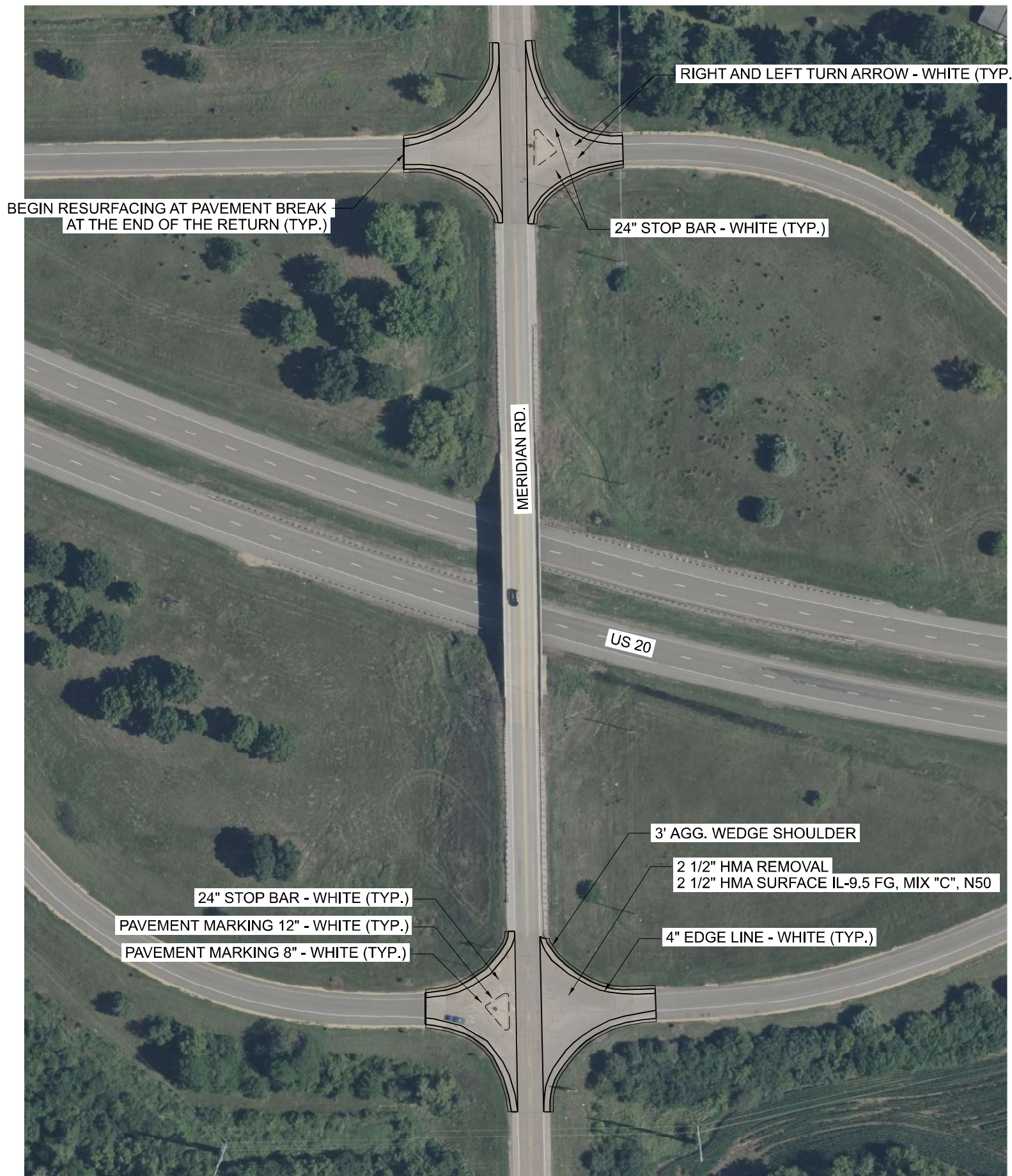
**STATE OF ILLINOIS  
DEPARTMENT OF TRANSPORTATION**

**PLAN SHEET  
MONTAGUE RD.**

SCALE: SHEET OF SHEETS STA. TO STA.

F.A.P. RTE.	SECTION	COUNTY	TOTAL SHEETS	SHEET NO.
301	(1&2) RS	WINNEBAGO	5	4
CONTRACT NO. 64V25				
ILLINOIS FED. AID PROJECT				

MODEL: D:\\_SUF\_P\AN  
 FILE NAME: p:\projects\p1\DOT Documents\DOT Office\District 2\CRD Projects\Operations\Maintenance Section\Draws\Winnebago\Operations\Contract Maintenance\FY 2026\64V25- Meridian and Montague US 20.mxd  
 Interest\Draws\64V25-05-Plan Sheet Meridian Rd.dgn



USER NAME = Nicholas,Vock	DESIGNED -	REVISED -
	DRAWN -	REVISED -
PLOT SCALE = \$\$SCALE\$	CHECKED -	REVISED -
PLOT DATE = 3/11/2026	DATE -	REVISED -

**STATE OF ILLINOIS  
 DEPARTMENT OF TRANSPORTATION**

**PLAN SHEET  
 MERIDIAN RD.**

SCALE: SHEET OF SHEETS STA. TO STA.

F.A.P. RTE.	SECTION	COUNTY	TOTAL SHEETS	SHEET NO.
301	(1&2) RS	WINNEBAGO	5	5
CONTRACT NO. 64V25				
ILLINOIS FED. AID PROJECT				